

# V&V Reference Report

## L2 ASCDS Version : 8.5.1.1

Observation 6274 - L2 Version 3  
Chandra X-Ray Center

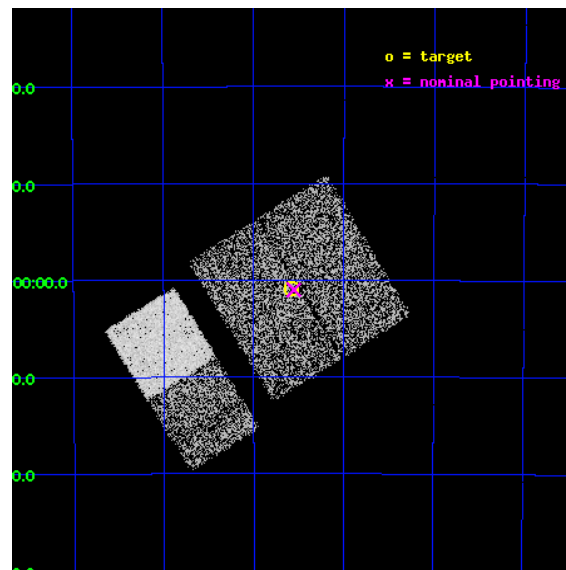
L2 Processing Date : Dec 25 2012

## Contents

<b>1</b>	<b>Front</b>	<b>2</b>
<b>2</b>	<b>OBI</b>	<b>3</b>
2.1	OBI . . . . .	3
2.1.1	Images . . . . .	3
2.1.2	Bias . . . . .	3
2.1.3	Parameters . . . . .	4
2.1.4	Events . . . . .	4
2.2	Compared Parameters . . . . .	5
2.3	Aspect . . . . .	6
2.4	Star Slots . . . . .	9
2.4.1	Slot 3 . . . . .	9
2.4.2	Slot 4 . . . . .	10
2.4.3	Slot 5 . . . . .	11
2.4.4	Slot 6 . . . . .	12
2.4.5	Slot 7 . . . . .	13
2.5	FID Slots . . . . .	14
2.5.1	Slot 0 . . . . .	14
2.5.2	Slot 1 . . . . .	15
2.5.3	Slot 2 . . . . .	16
<b>A</b>	<b>Summary</b>	<b>17</b>
A.1	Status . . . . .	17
A.2	Comments . . . . .	17

# 1 Front

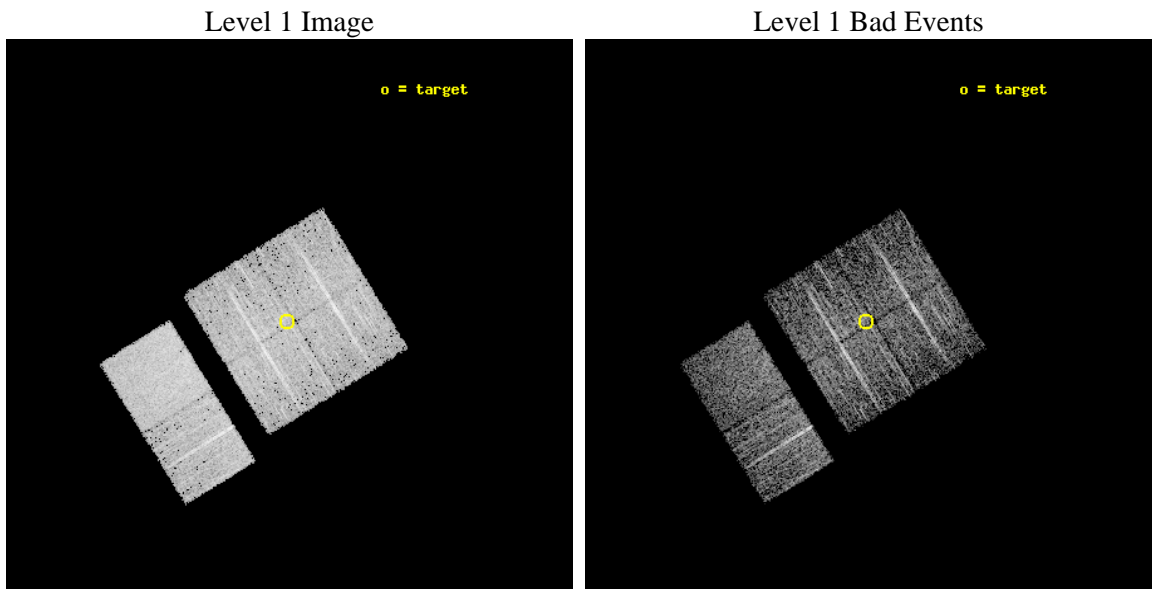
seq_num	701176	Sequence number
obs_id	6274	Observation id
title	Search for strongly obscured AGNs: support for INTEGRAL all-sky hard X-ray survey	Proposal title
observer	Prof. Rashid Sunyaev	Principal investigator
object	IGR J11085-5100	Source name
dtcycle	0	&#160
cycle	P	events from which exps? Prim/Second/Both
ra_targ	167.144167	Observer's specified target RA [deg]
dec_targ	-51.014	Observer's specified target Dec [deg]
ra_nom	167.13828800317	Nominal RA [deg]
dec_nom	-51.016716569003	Nominal Dec [deg]
roll_nom	238.37043426872	Nominal Roll [deg]
revision	3	Processing version of data
ontime	3676.7999863029	Sum of GTIs [s]
livetime	3630.2421309731	Livetime [s]
ontime0	3676.7999863029	Sum of GTIs [s]
ontime1	3676.7999863029	Sum of GTIs [s]
ontime2	3676.7999863029	Sum of GTIs [s]
ontime3	3676.7999863029	Sum of GTIs [s]
ontime6	3676.7999863029	Sum of GTIs [s]
ontime7	3676.7999863029	Sum of GTIs [s]
l2events	30561	Number of level 2 events



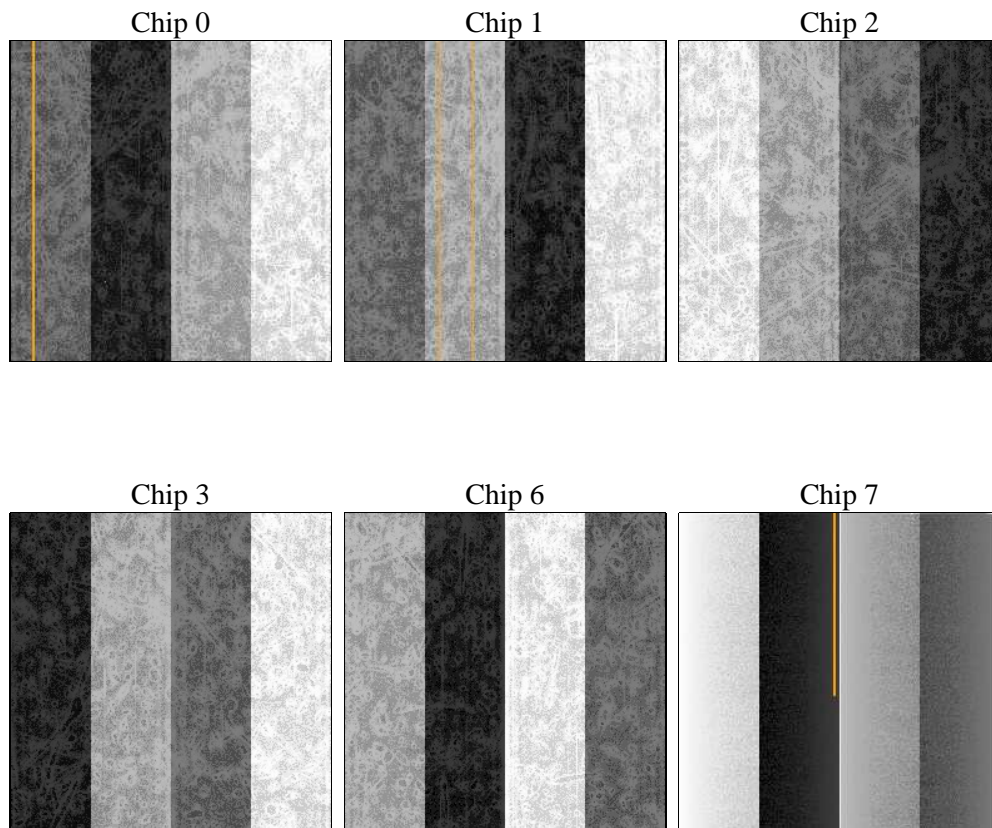
## 2 OBI

### 2.1 OBI

#### 2.1.1 Images



#### 2.1.2 Bias



### 2.1.3 Parameters

obi_num	0	Obi number	sched_exp_time	3500.000000	[s] Scheduled observation exposure time
ascdsver	8.5.1.1	Processing system revision	ontime	3676.7999863029	Sum of GTIs [s]
caldsver	4.5.5	&#160	ontime0	3676.7999863029	Sum of GTIs [s]
date	2012-12-25T20:37:54	Date and time of file creation	ontime1	3676.7999863029	Sum of GTIs [s]
revision	3	Processing version of data	ontime2	3676.7999863029	Sum of GTIs [s]
			ontime3	3676.7999863029	Sum of GTIs [s]
			ontime6	3676.7999863029	Sum of GTIs [s]
			ontime7	3676.7999863029	Sum of GTIs [s]
			l1events	181856	Number of level 1 events

### 2.1.4 Events

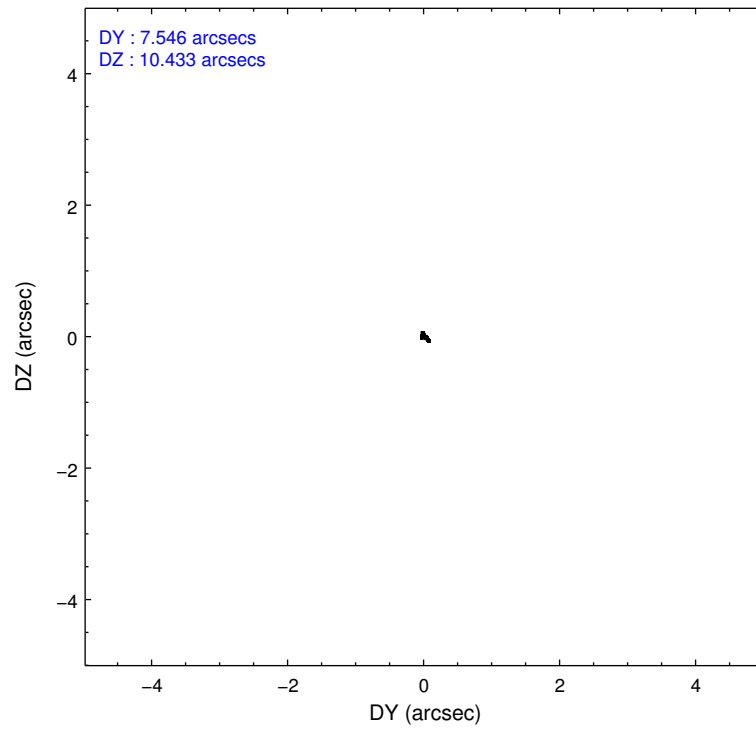
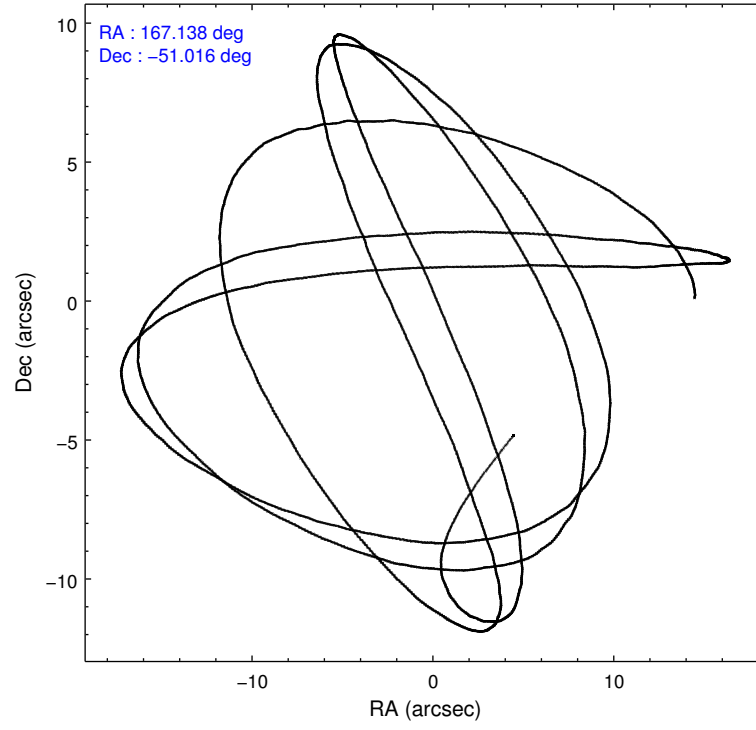
	ccd 0	ccd 1	ccd 2	ccd 3	ccd 6	ccd 7		ccd 0	ccd 1	ccd 2	ccd 3	ccd 6	ccd 7
level 1 events	27044	26486	29807	28208	30576	39735	grade 0 events	1526	1451	1557	1376	1356	1435
rejected events	23557	22878	26299	24899	27082	23769		5%	5%	5%	4%	4%	3%
rejected %	87%	86%	88%	88%	88%	59%	grade 1 events	14	8	19	16	15	43
								0%	0%	0%	0%	0%	0%
							grade 2 events	757	835	754	714	761	3153
								2%	3%	2%	2%	2%	7%
							grade 3 events	334	358	331	294	371	1406
								1%	1%	1%	1%	1%	3%
							grade 4 events	313	335	327	333	316	1402
								1%	1%	1%	1%	1%	3%
							grade 5 events	1209	1299	1182	1331	1418	3789
								4%	4%	3%	4%	4%	9%
							grade 6 events	601	679	589	647	738	8814
								2%	2%	1%	2%	2%	22%
							grade 7 events	22290	21521	25048	23497	25601	19693
								82%	81%	84%	83%	83%	49%

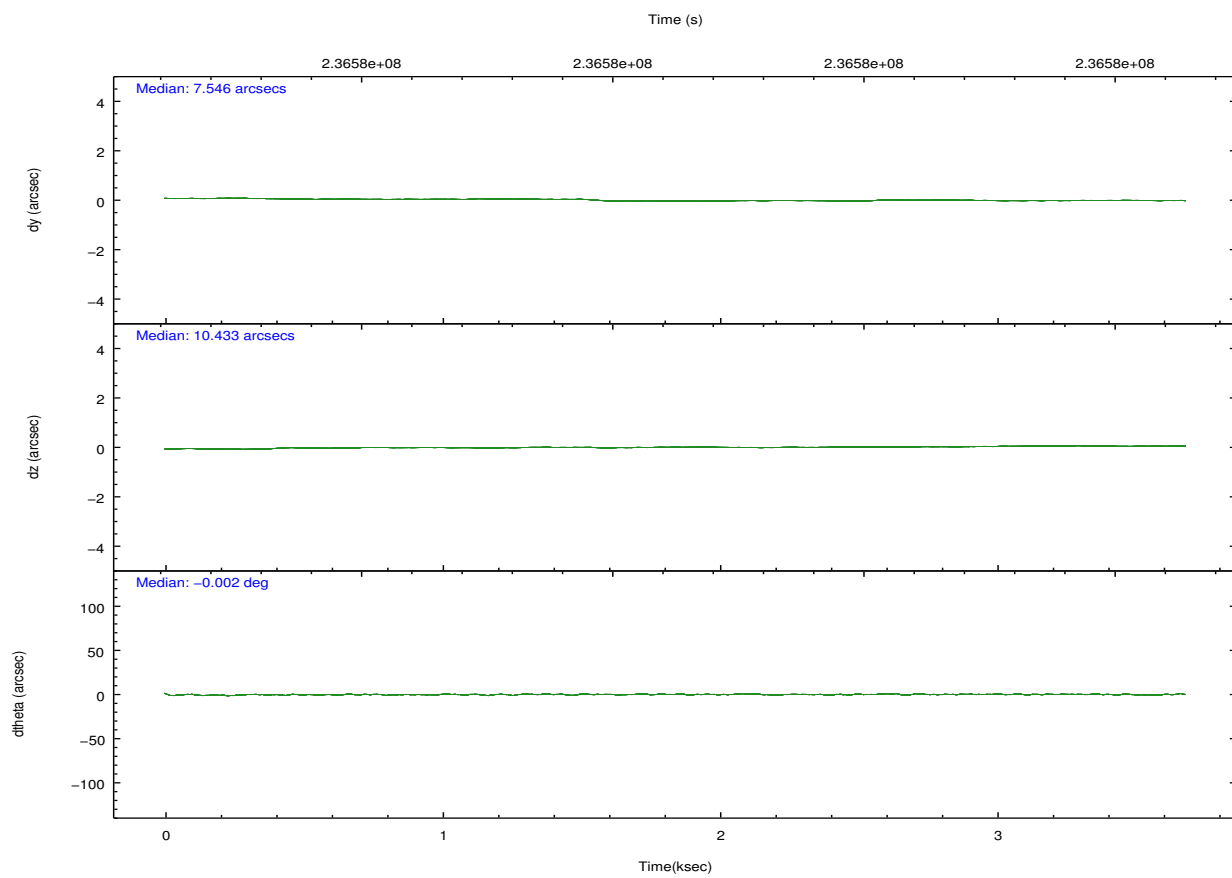
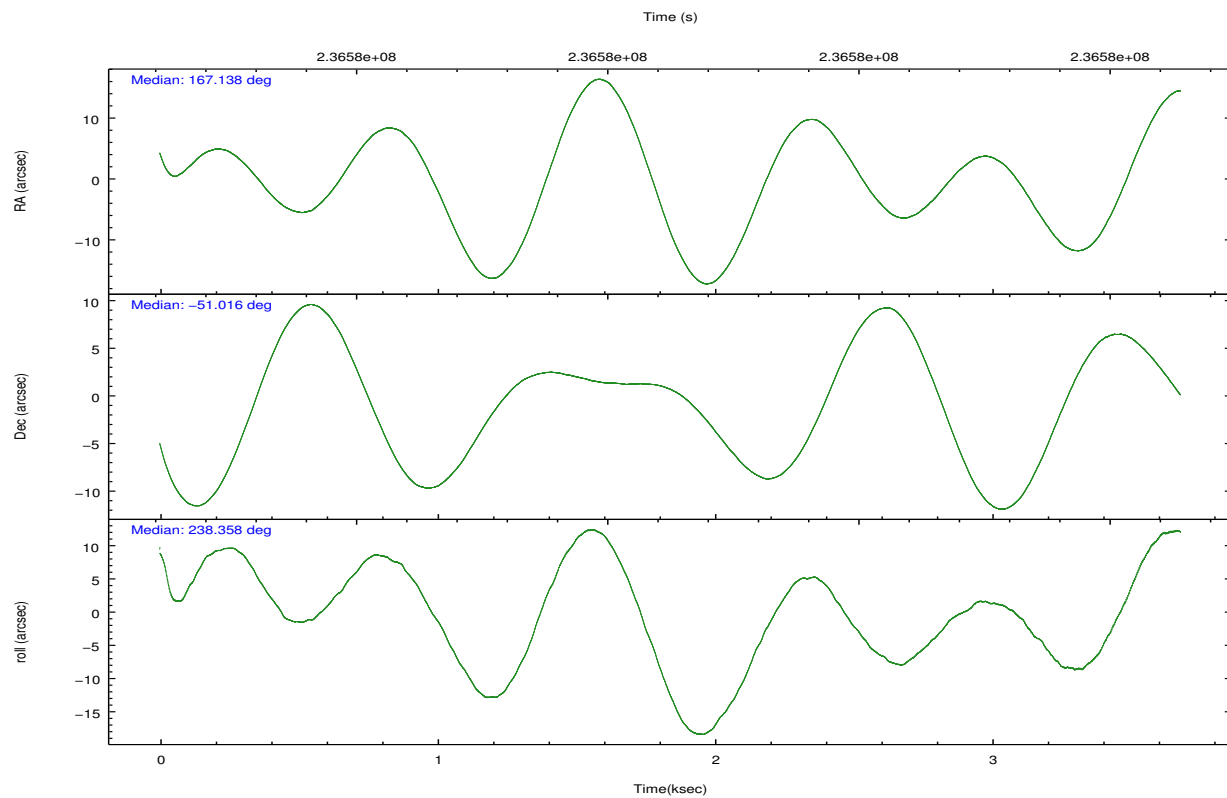


## 2.2 Compared Parameters

Parameter	Planned	Actual	Parameter	Planned	Actual
Instrument	ACIS	ACIS	Obspar format version number	7	7
Detector	ACIS-012367	ACIS-012367	Obspar file type	PREDICTED	ACTUAL
Grating	NONE	NONE	Obspar update status	NONE	UPDATED
Data mode	FAINT	FAINT	Number of optional ACIS chips dropped	0	0
Observation mode	POINTING	POINTING	On-chip summing requested	N	N
[deg] Pointing RA	167.139225	167.1382880031672	Subarray requested	NONE	NONE
[deg] Pointing Dec	-50.989308	-51.01671656900278	Alternating exposures requested	N	N
[deg] Pointing Roll	238.162462	238.3704342687159	[s] Primary exposure time	0.000000	3.2
[mm] SIM focus pos	-0.782348	-0.7809083437167272			
[mm] SIM defocus	0	0.001439871863259334			
[mm] SIM translation stage pos	-233.592463	-233.5874344608287			
[mm] SIM translation stage offset	0	-0.005018542100998502			
[s] Observation start time (MET)	236577585.184000	236576492.38507			
Observation start date	2005-07-01T03:58:41	2005-07-01T03:41:32			
[s] Observation end time (MET)	236581085.184000	236581857.74781			
Observation end date	2005-07-01T04:57:01	2005-07-01T05:10:57			
Read mode	TIMED	TIMED			

## 2.3 Aspect



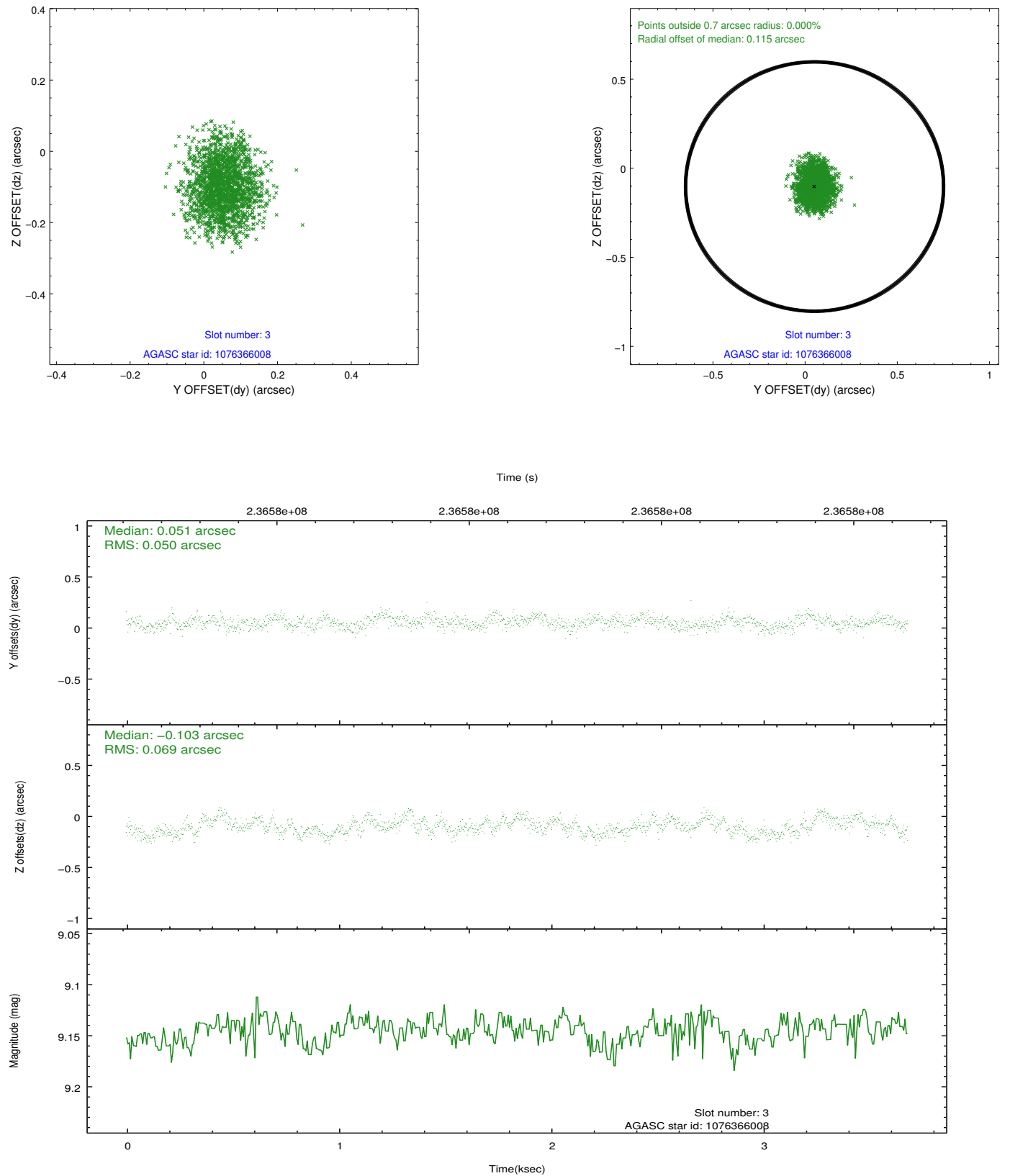


### Slot Statistics

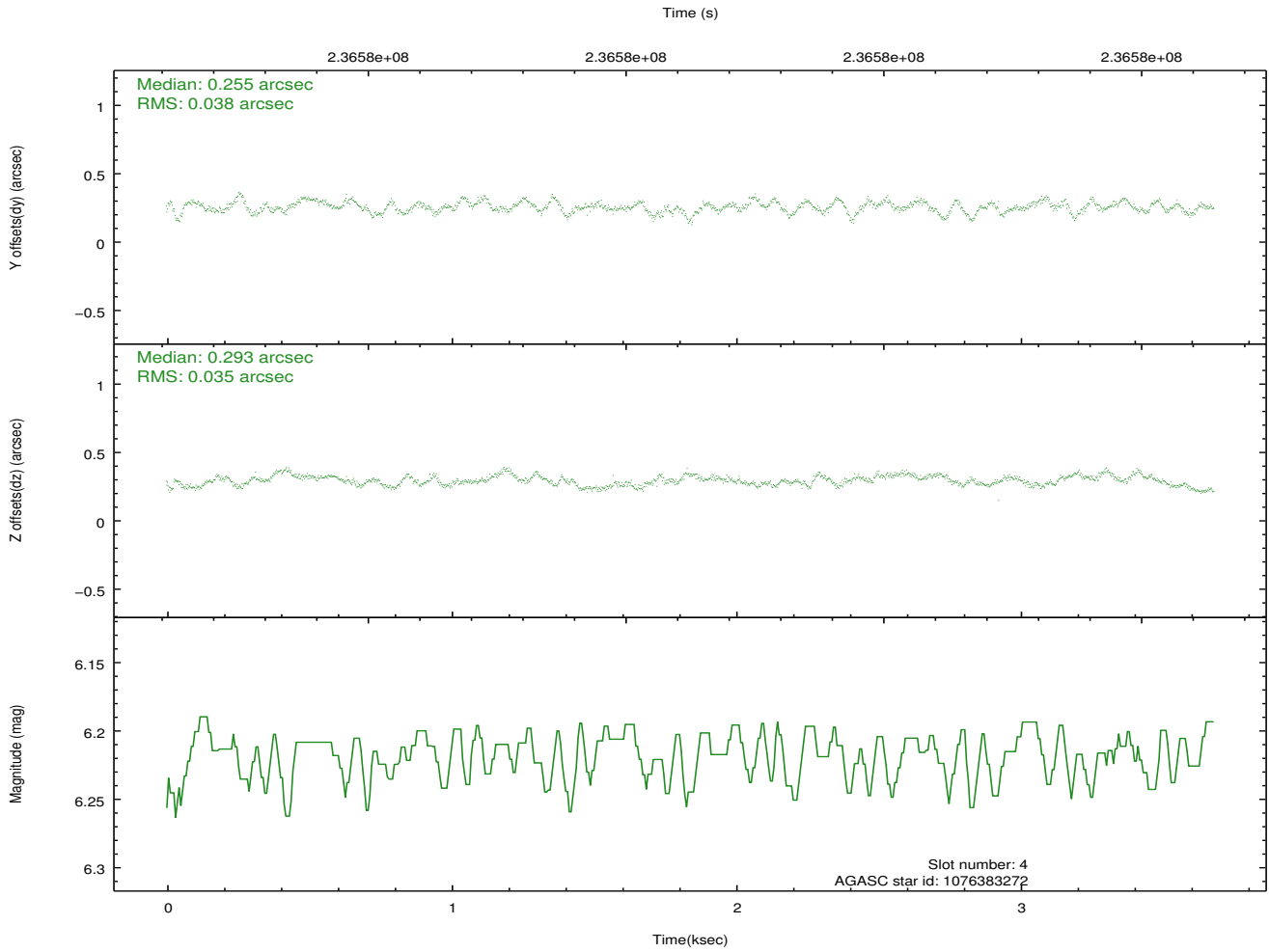
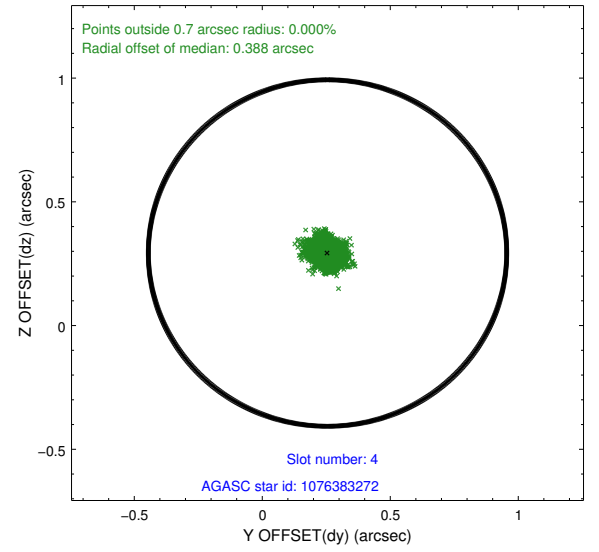
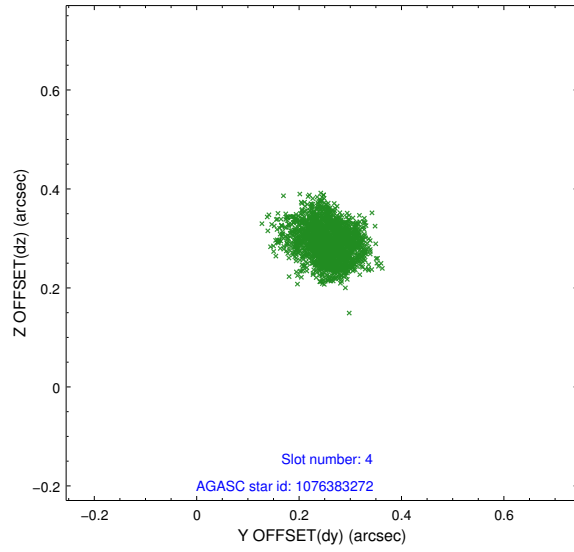
slot	status	id	mag	n_pts	med_dy	med_dz	dr1	dr2	ra	dec	mean_y	mean_z
0	FID	ACIS-I-1	7.24	898	0.023	-0.008	0.007	0.012	0.000000	0.000000	932.13	-833.93
1	FID	ACIS-I-5	7.23	899	-0.177	0.036	0.006	0.012	0.000000	0.000000	-1815.22	1062.77
2	FID	ACIS-I-6	7.25	898	0.062	0.042	0.007	0.011	0.000000	0.000000	395.87	1709.20
3	GUIDE	1076366008	9.15	1796	0.051	-0.103	0.092	0.144	167.117557	-51.158632	544.14	279.91
4	GUIDE	1076383272	6.22	1797	0.255	0.293	0.057	0.085	166.523920	-51.212923	1421.99	-750.47
5	GUIDE	1075839528	9.41	1794	-0.149	0.200	0.090	0.144	167.600273	-50.443040	-2224.34	-138.46
6	GUIDE	1076366088	9.64	1793	-0.020	-0.370	0.146	0.230	165.955573	-50.887204	1123.84	-2466.46
7	GUIDE	1076371224	9.70	1795	-0.148	-0.029	0.119	0.192	168.213830	-51.153111	-763.55	2379.99

## 2.4 Star Slots

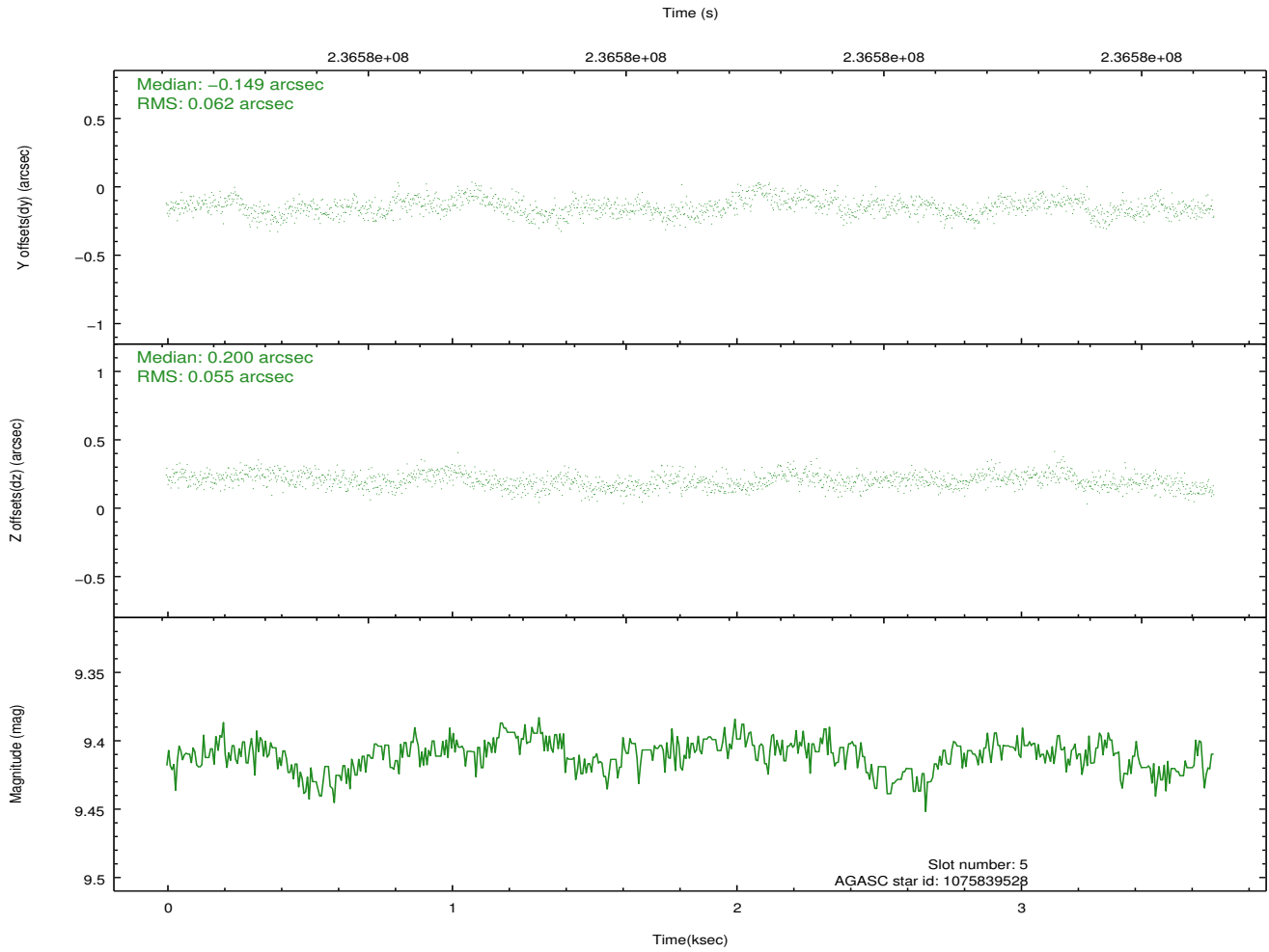
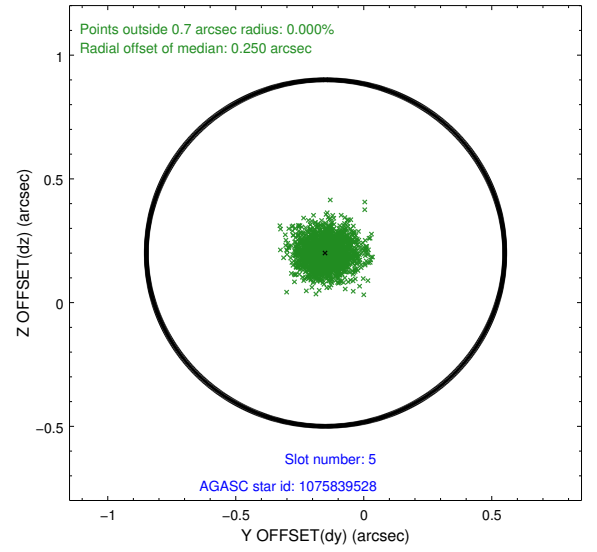
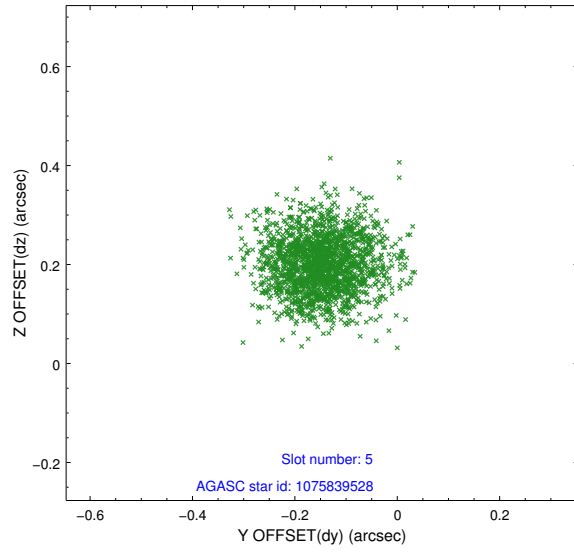
### 2.4.1 Slot 3



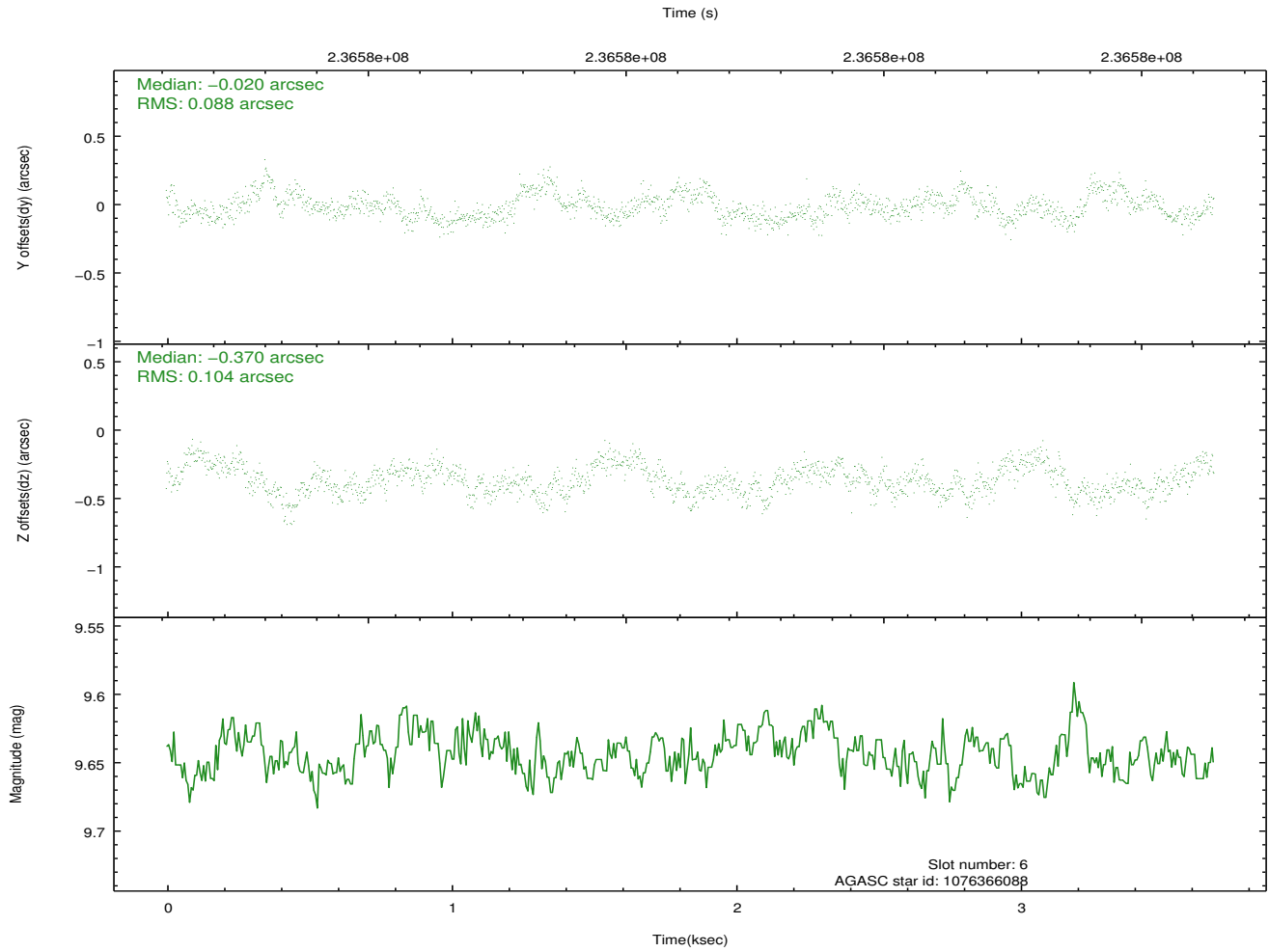
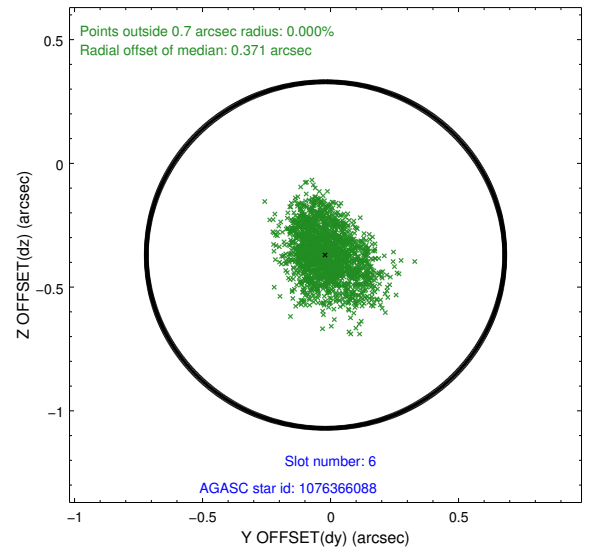
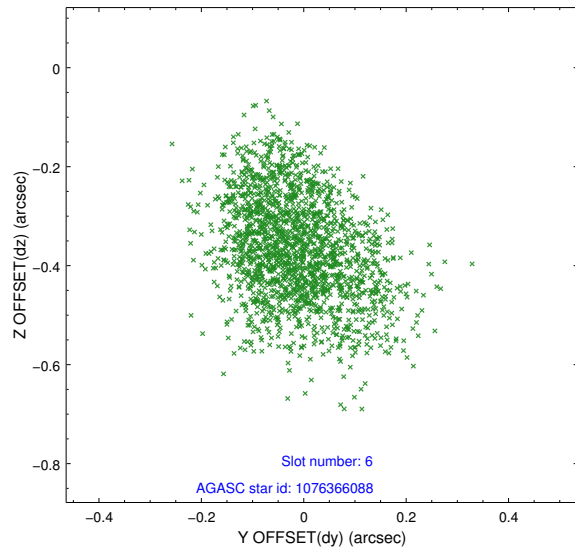
## 2.4.2 Slot 4



### 2.4.3 Slot 5

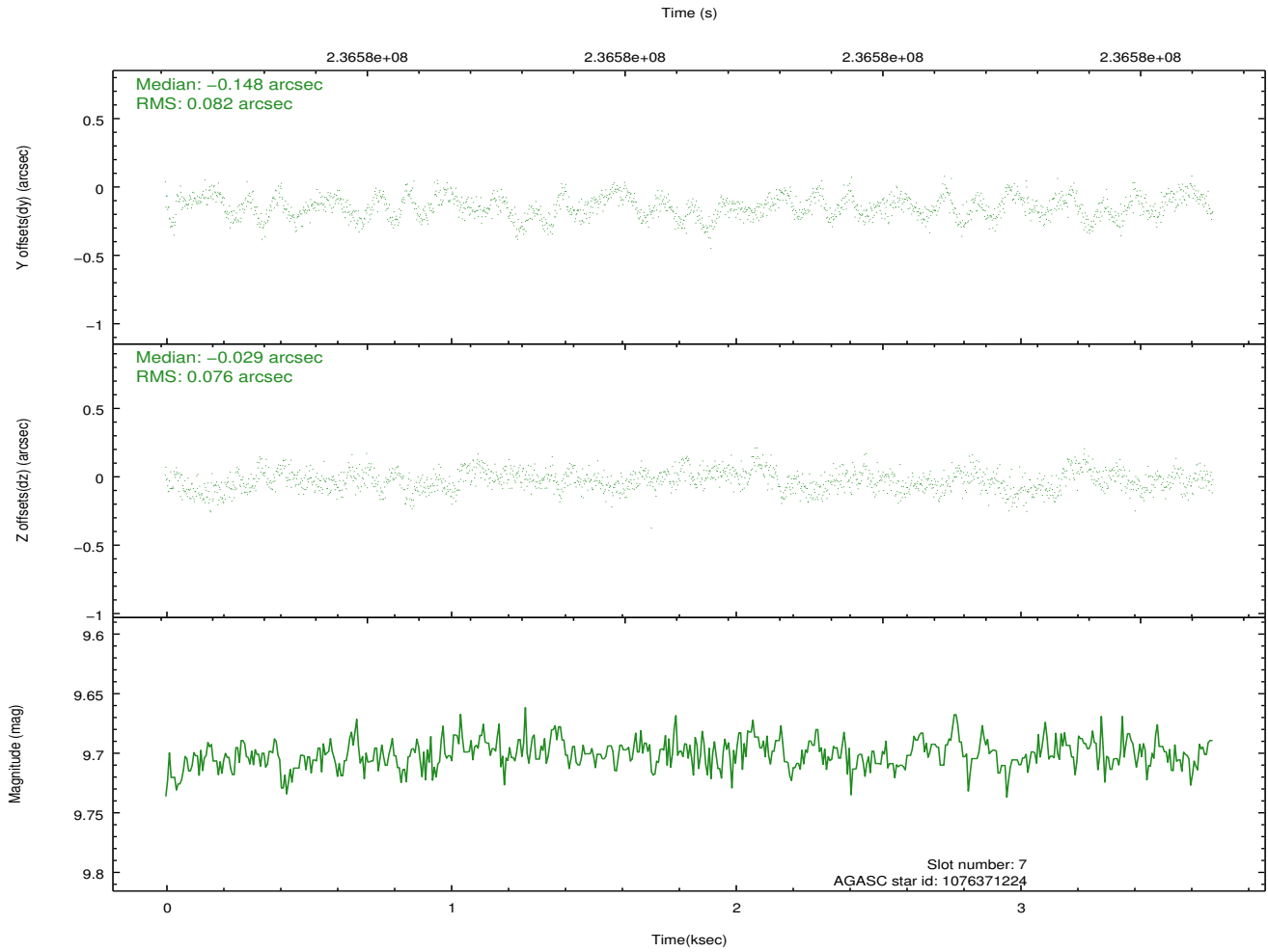
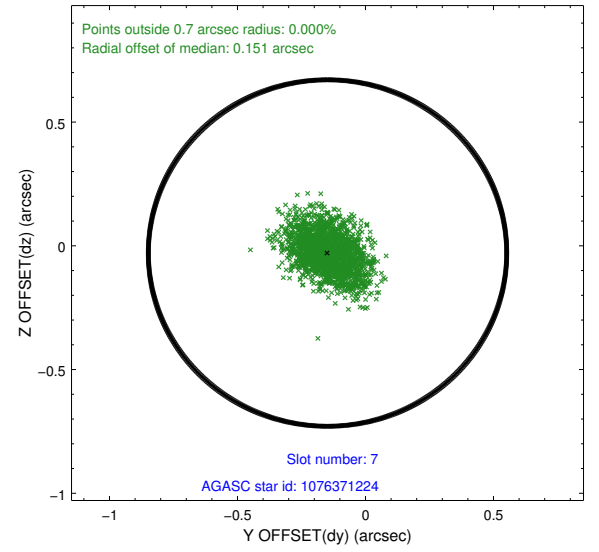
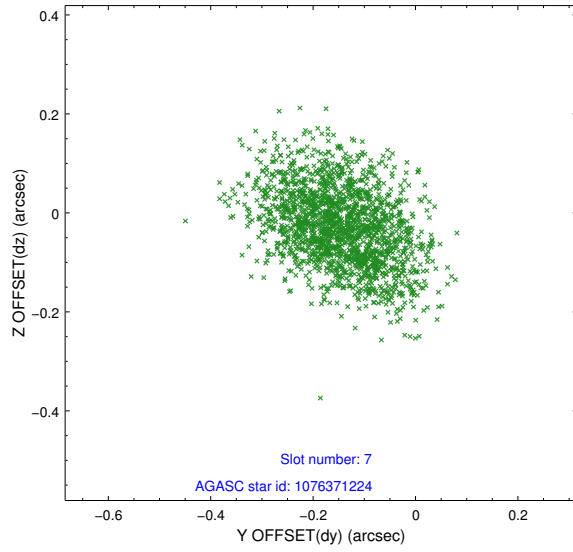


## 2.4.4 Slot 6



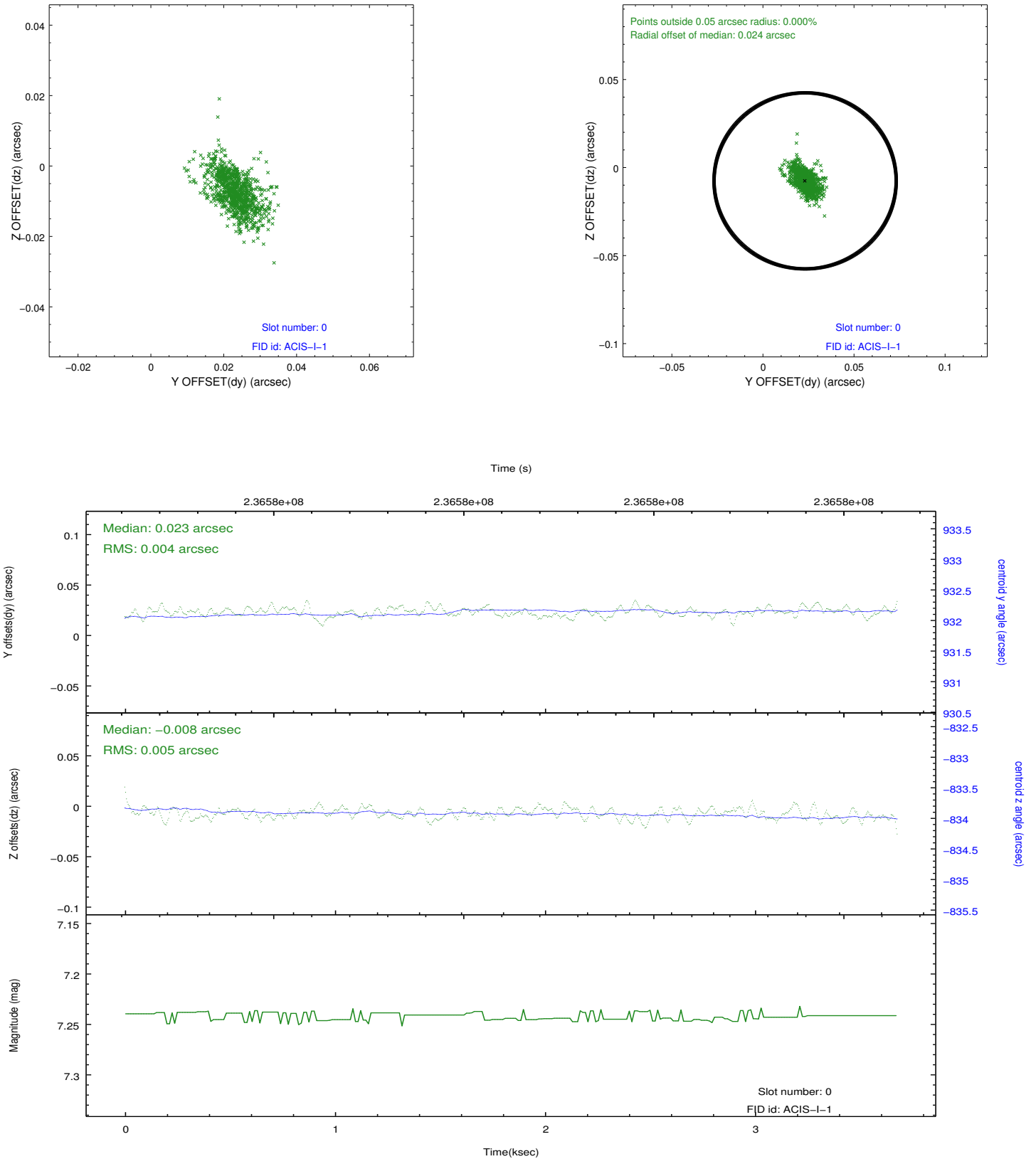


## 2.4.5 Slot 7

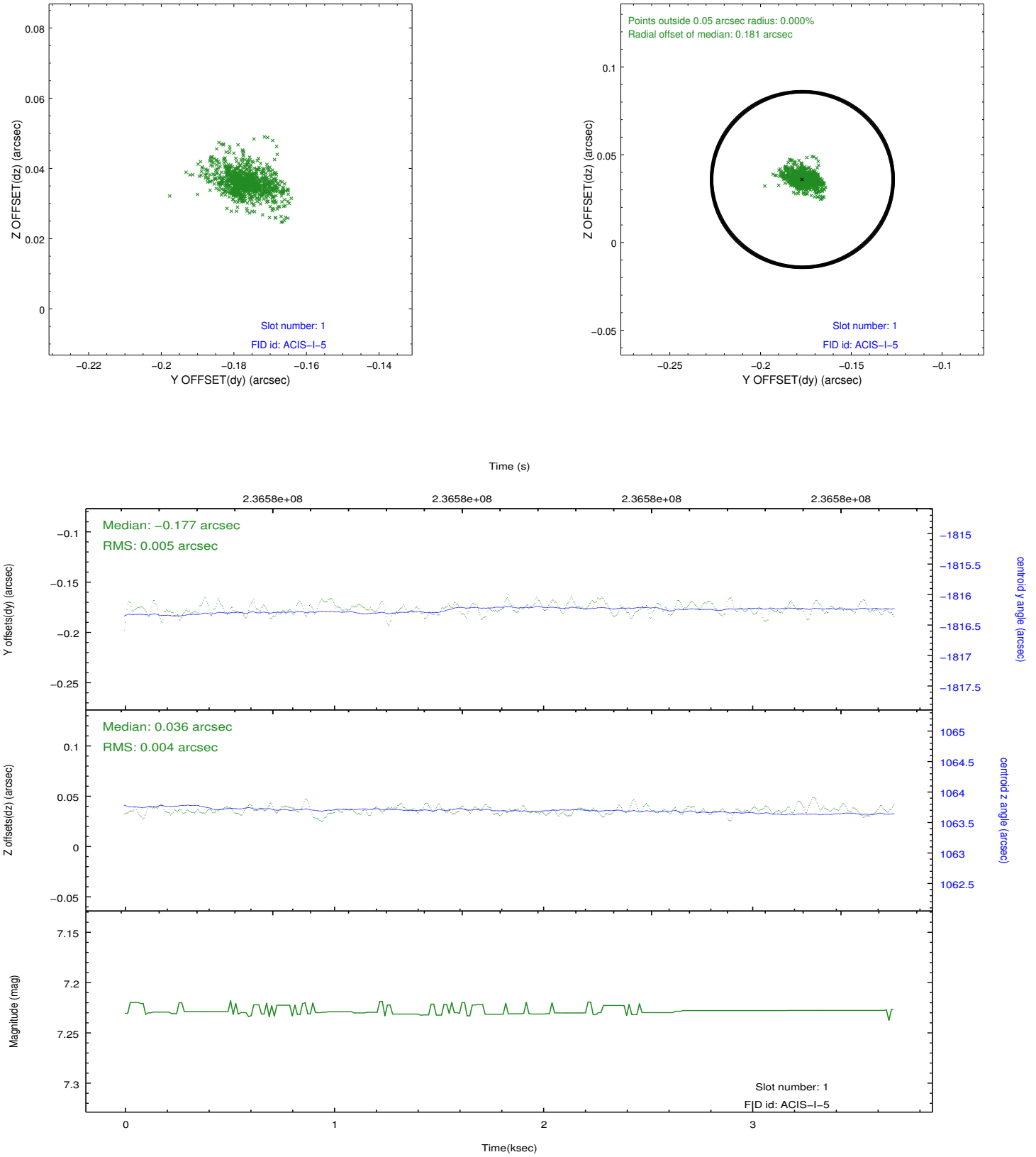


## 2.5 FID Slots

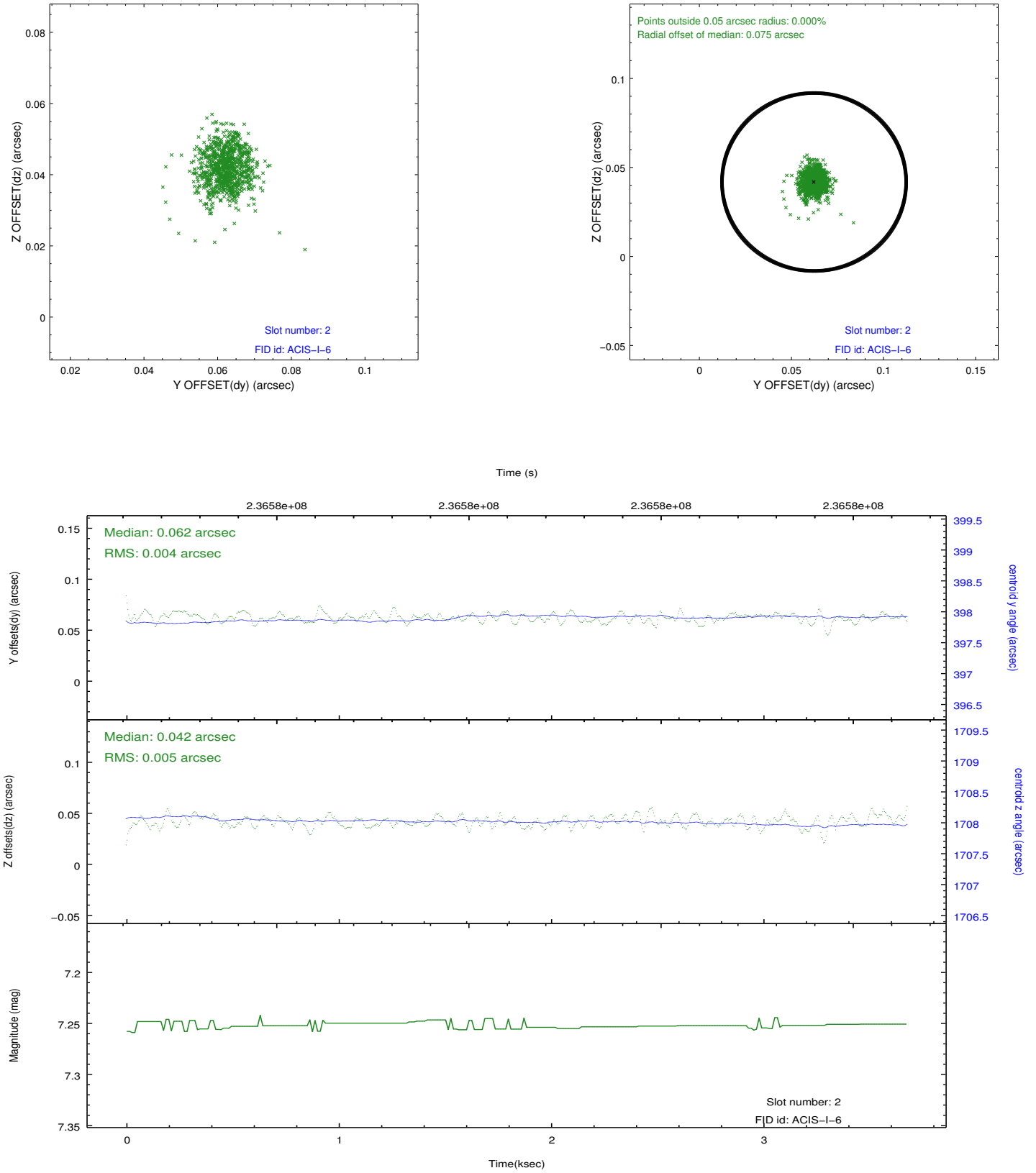
### 2.5.1 Slot 0



## 2.5.2 Slot 1



### 2.5.3 Slot 2



## A Summary

### A.1 Status

V&V Scientist	Jen Lauer
V&V Date (YYYY-MM-DD)	2013.01.17
V&V Edition	1
V&V Disposition and Status	OK
V&V Charge Time	3.676799

### A.2 Comments