

# V&V Reference Report

## L2 ASCDS Version : 7.6.7

Observation 5745 - L2 Version 002  
Chandra X-Ray Center

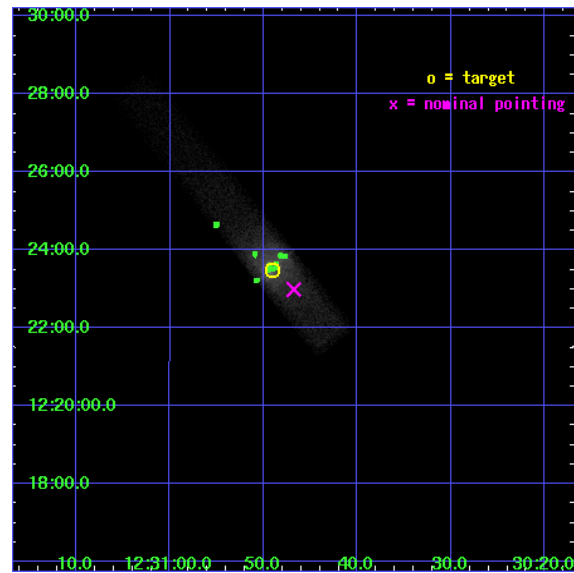
L2 Processing Date: Mar 3 2006

## Contents

<b>1</b>	<b>Front</b>	<b>2</b>
<b>2</b>	<b>OBI</b>	<b>3</b>
2.1	OBI . . . . .	3
2.1.1	Images . . . . .	3
2.1.2	Bias . . . . .	3
2.1.3	Parameters . . . . .	4
2.1.4	Events . . . . .	4
2.2	Compared Parameters . . . . .	5
2.3	Aspect . . . . .	6
2.4	Star Slots . . . . .	9
2.4.1	Slot 3 . . . . .	9
2.4.2	Slot 4 . . . . .	10
2.4.3	Slot 5 . . . . .	11
2.4.4	Slot 6 . . . . .	12
2.4.5	Slot 7 . . . . .	13
2.5	FID Slots . . . . .	14
2.5.1	Slot 0 . . . . .	14
2.5.2	Slot 1 . . . . .	15
2.5.3	Slot 2 . . . . .	16
<b>3</b>	<b>Point Sources</b>	<b>17</b>
<b>A</b>	<b>Summary</b>	<b>18</b>
A.1	Status . . . . .	18
A.2	Comments . . . . .	18

# 1 Front

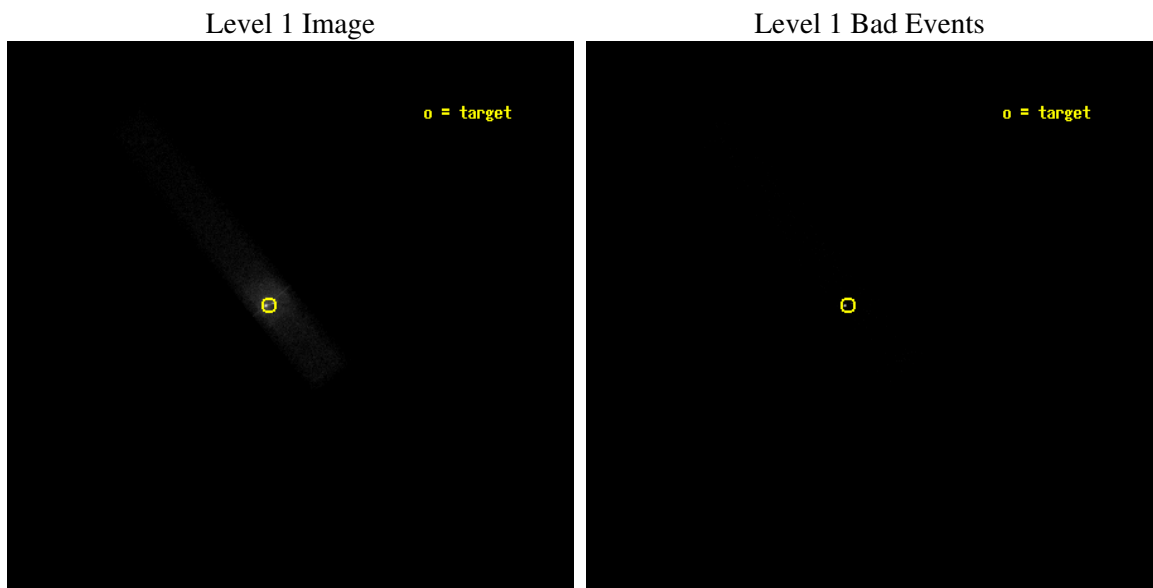
seq_num	701167
obs_id	5745
title	The X-ray Flares of Knot 'HST-1' in the M87 Jet (monitoring)
observer	Dr. John Biretta
object	M87
dtcycle	0
cycle	P
ra_targ	187.704167
dec_targ	12.391667
ra_nom	187.69493962273
dec_nom	12.383167033292
roll_nom	230.93340733826
revision	2
ontime	5187.6000773013
livetime	4704.8794461285
ontime7	5187.6000773013
l2events	59281



## 2 OBI

### 2.1 OBI

#### 2.1.1 Images



#### 2.1.2 Bias

Chip 7



### 2.1.3 Parameters

obi_num	0
ascdsver	7.6.7
caldbver	3.2.1
date	2006-03-03T06:26:54
revision	2

sched_exp_time	5000.000000
ontime	6641.5666624308
ontime7	6641.5666624308
l1events	78153

### 2.1.4 Events

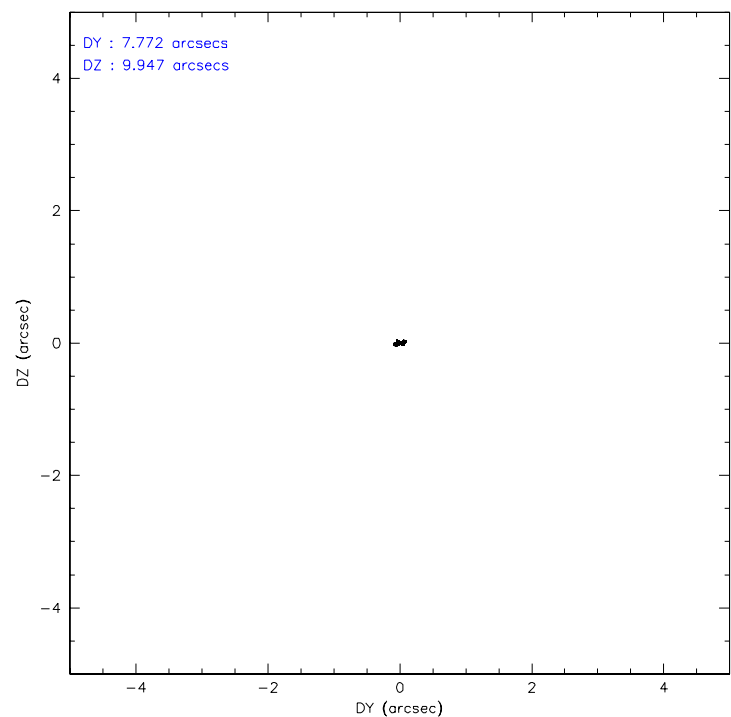
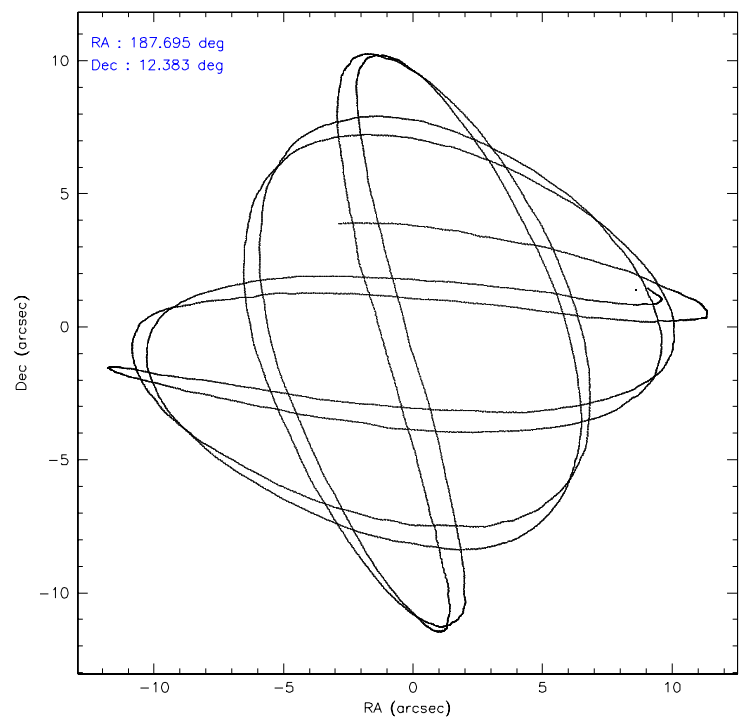
	<b>ccd 7</b>
level 1 events	78153
rejected events	18272
rejected %	23%

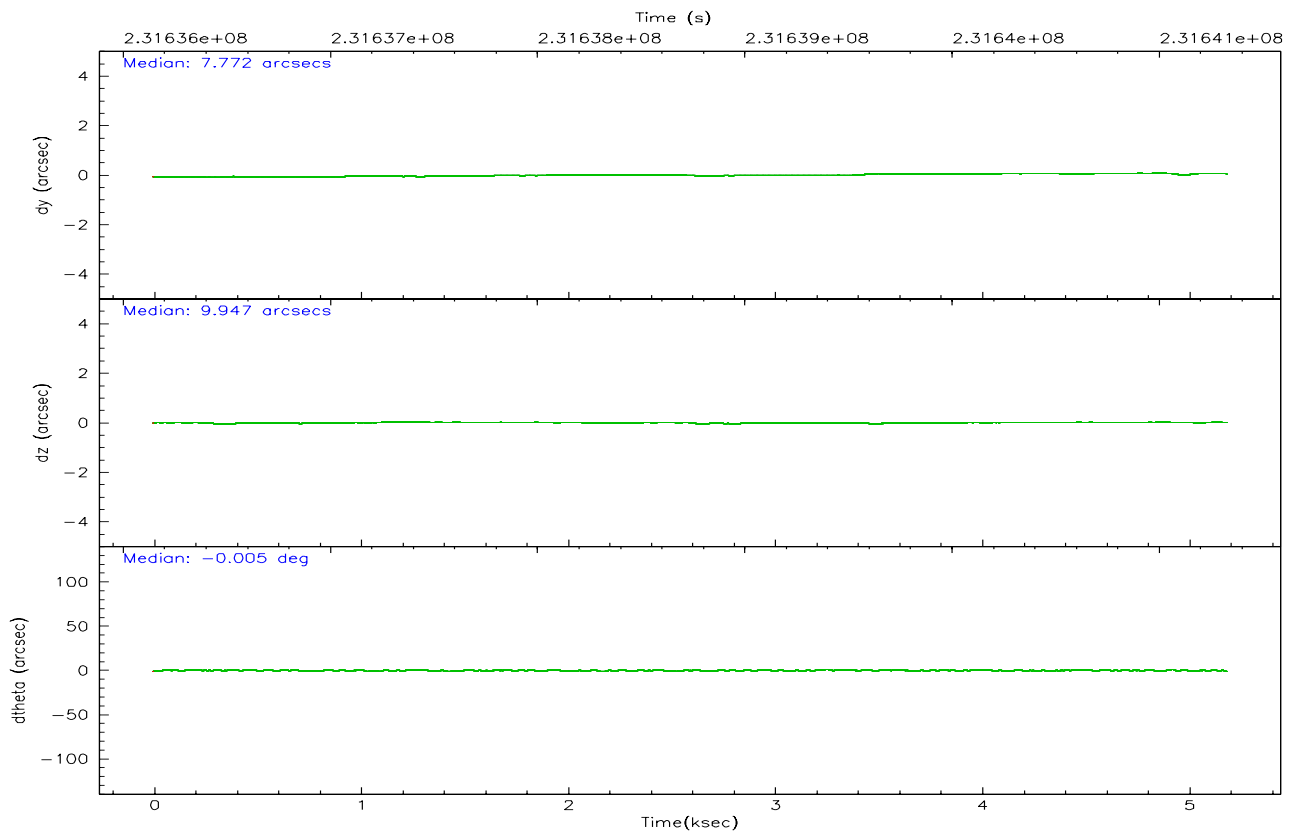
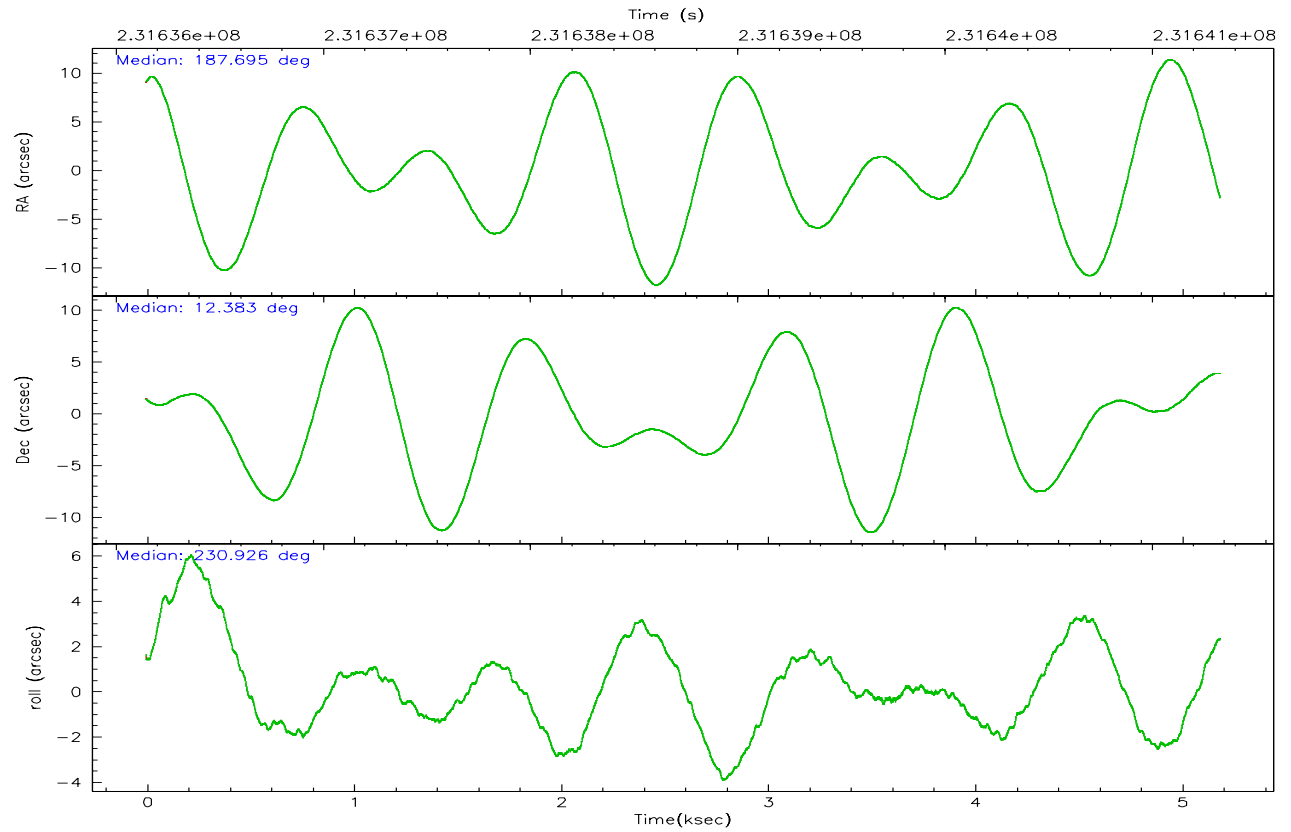
	<b>ccd 7</b>
grade 0 events	17591
	22%
grade 1 events	417
	0%
grade 2 events	16256
	20%
grade 3 events	6825
	8%
grade 4 events	6786
	8%
grade 5 events	2735
	3%
grade 6 events	15250
	19%
grade 7 events	12293
	15%

## 2.2 Compared Parameters

Parameter	Planned	Actual	Parameter	Planned	Actual
Instrument	ACIS	ACIS	Obspar format version number	6	6
Detector	ACIS-7	ACIS-7	Obspar file type	PREDICTED	ACTUAL
Grating	NONE	NONE	Obspar update status	NONE	UPDATED
Data mode	FAINT	FAINT	On-chip summing requested	N	N
Observation mode	POINTING	POINTING	Subarray requested	1/8	1/8
Pointing RA	187.698862	187.6949396227275	Subarray start row	0	449
Pointing Dec	12.410095	12.3831670332925	Subarray row count	1024	128
Pointing Roll	230.775937	230.9334073382562	Alternating exposures requested	N	N
Window start time	231379264.184000	231379264.184000	Primary exposure time	0.000000	0.4
Window stop time	231984064.184000	231984064.184000			
SIM focus pos (mm)	-0.684267	-0.6828225247311905			
SIM defocus (mm)	0	0.001444936568705701			
SIM translation stage pos (mm)	-190.132523	-190.1400660498719			
SIM translation stage offset (mm)	0	0.00754346686406393			
Observation start time	231636325.184000	231634684.25967			
Observation start date	2005-05-04T23:24:21	2005-05-04T22:58:04			
Observation end time	231641325.184000	231641458.99748			
Observation end date	2005-05-05T00:47:41	2005-05-05T00:50:58			
Read mode	TIMED	TIMED			

### 2.3 Aspect





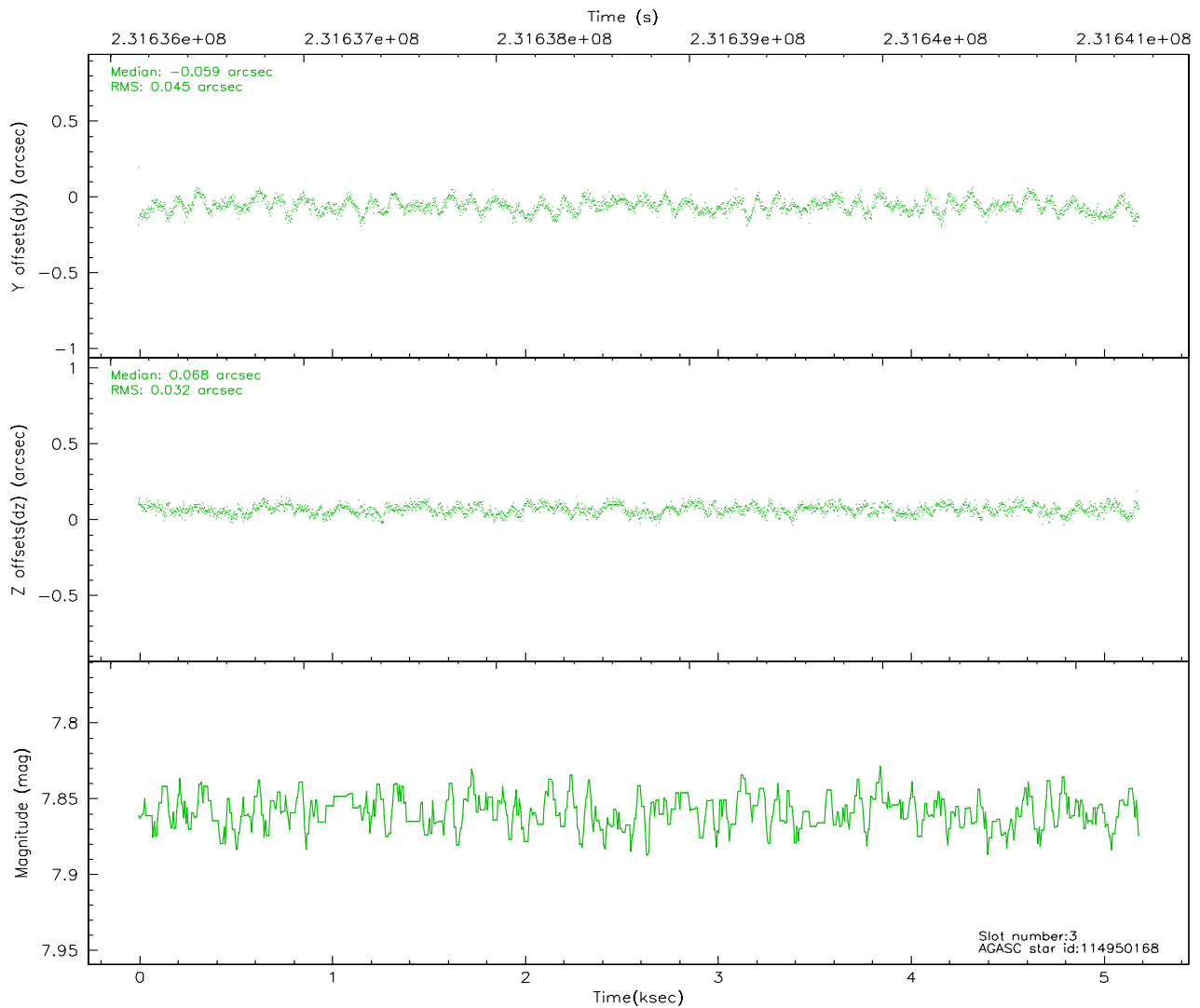
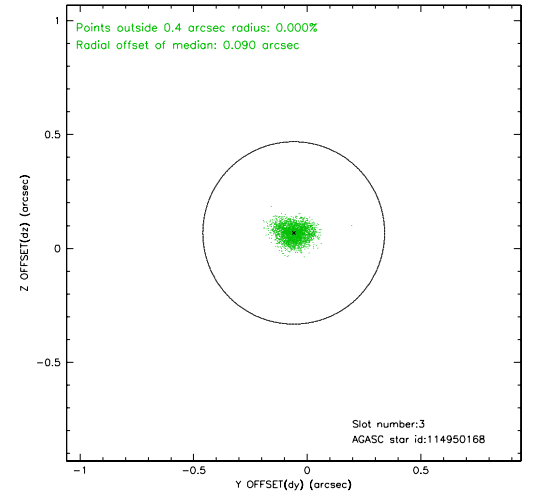
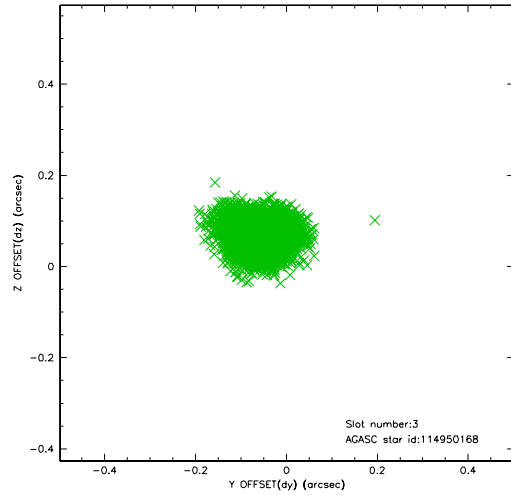
### Slot Statistics

slot	status	id	mag	n_pts	med_dy	med_dz	dr1	dr2	ra	dec	mean_y	mean_z
0	FID	ACIS-S-2	7.10	1266	-0.031	-0.000	0.007	0.010	0.000000	0.000000	-760.53	-1731.21
1	FID	ACIS-S-4	7.21	1266	0.063	0.015	0.006	0.011	0.000000	0.000000	2152.26	176.15
2	FID	ACIS-S-5	7.24	1266	-0.062	-0.006	0.006	0.010	0.000000	0.000000	-1811.95	171.03
3	GUIDE	114950168	7.86	2532	-0.059	0.068	0.060	0.093	187.143398	12.117441	2051.61	-849.48
4	GUIDE	114950584	9.21	2532	-0.058	0.021	0.084	0.136	187.487323	11.827248	2097.95	748.87
5	GUIDE	114952824	8.57	2529	-0.011	0.124	0.063	0.103	187.703904	12.486727	-223.38	-160.68
6	GUIDE	114954440	9.21	2531	0.093	-0.099	0.103	0.162	186.915066	12.219118	2273.96	-1703.85
7	GUIDE	114955056	8.31	2529	0.036	-0.114	0.070	0.110	187.914001	12.127854	309.42	1227.90

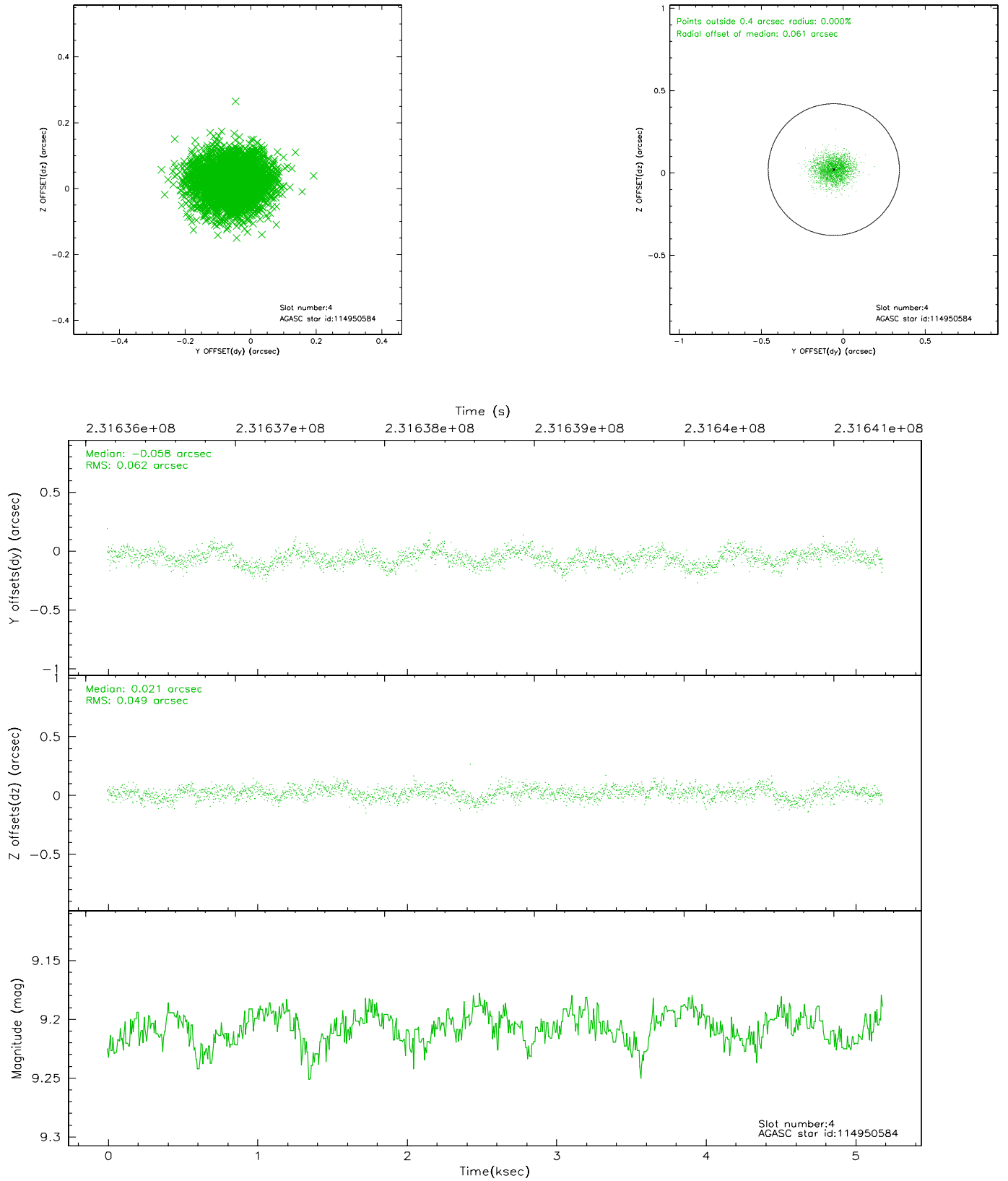


## 2.4 Star Slots

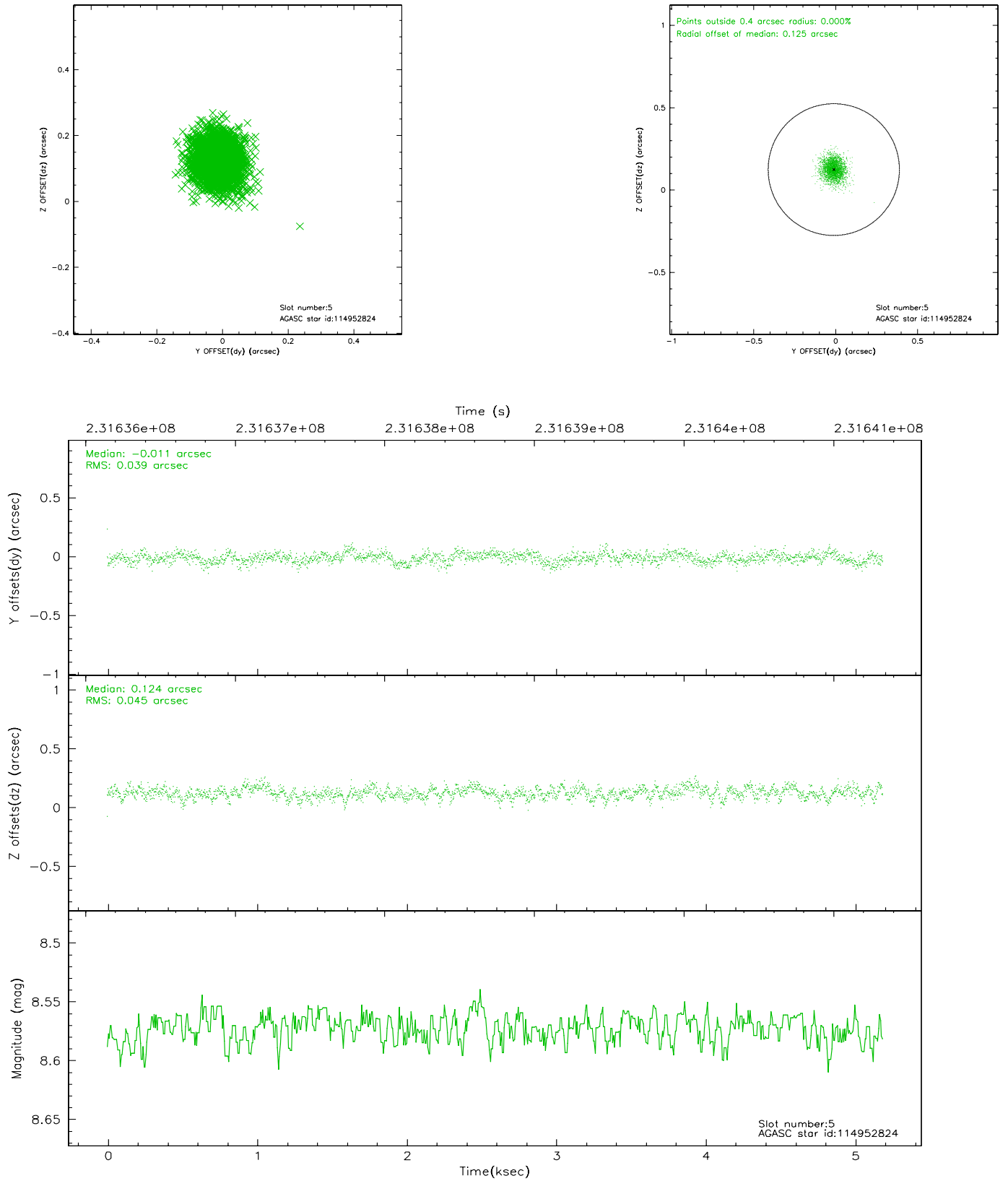
### 2.4.1 Slot 3



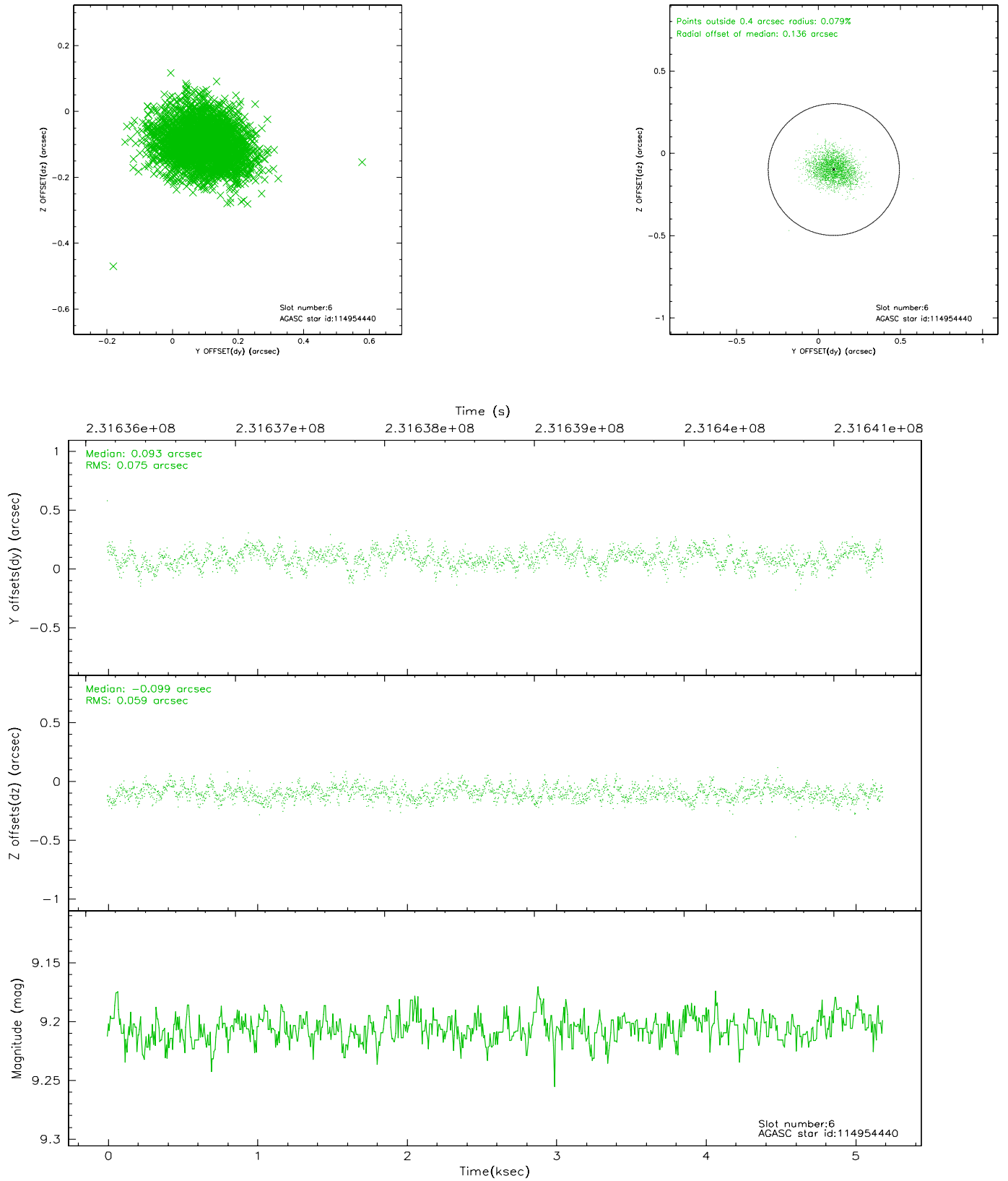
## 2.4.2 Slot 4



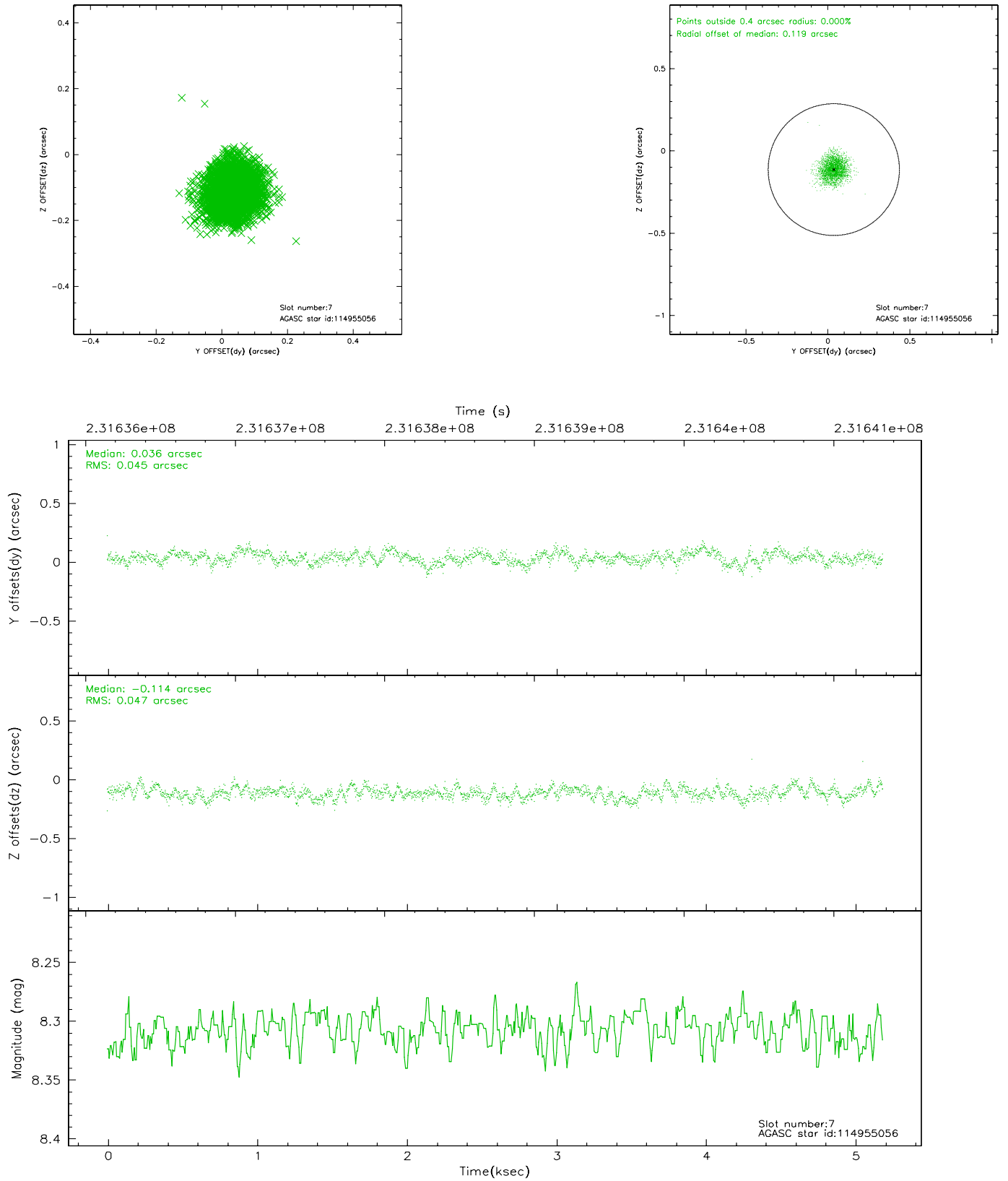
### 2.4.3 Slot 5



## 2.4.4 Slot 6

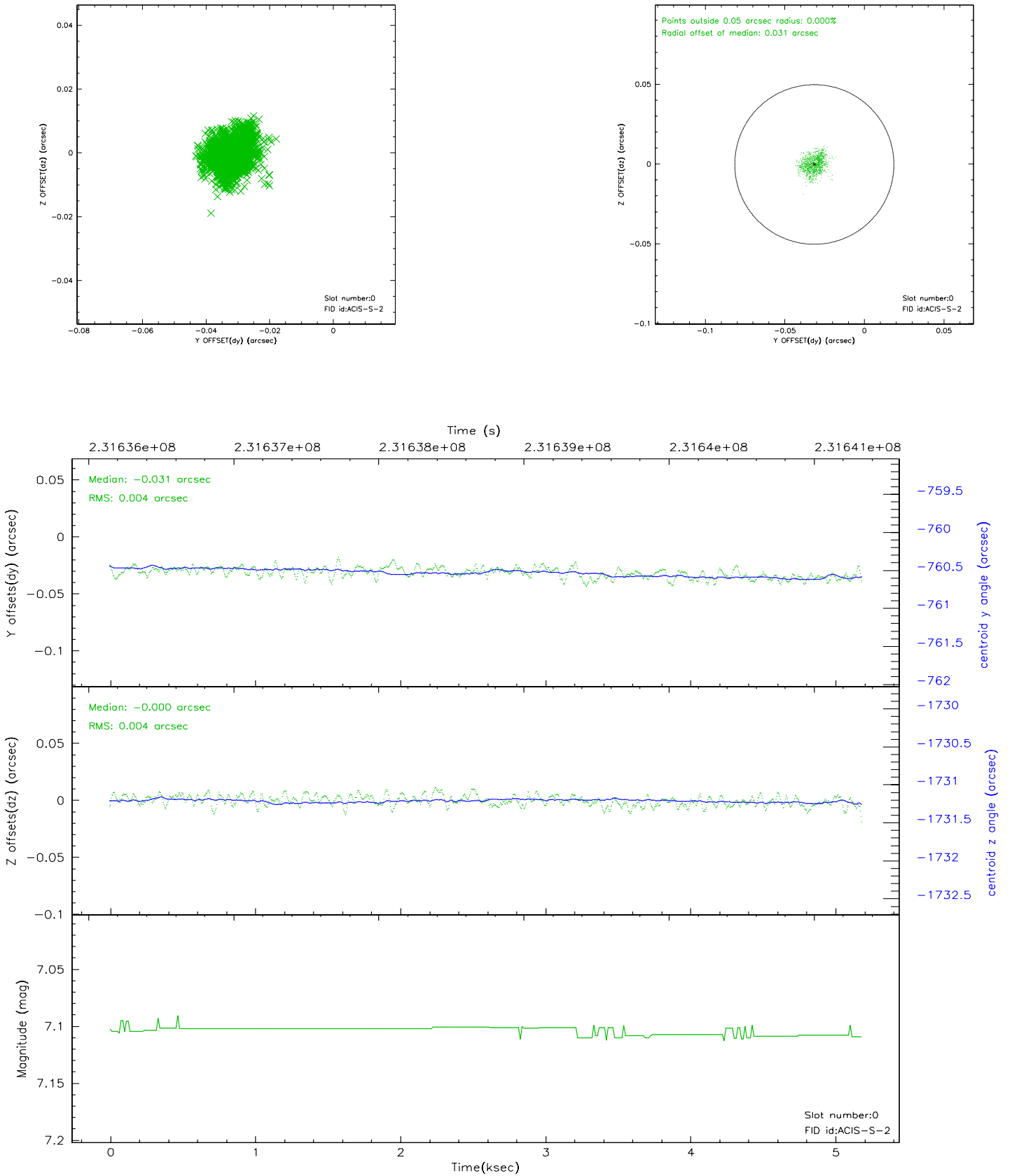


## 2.4.5 Slot 7

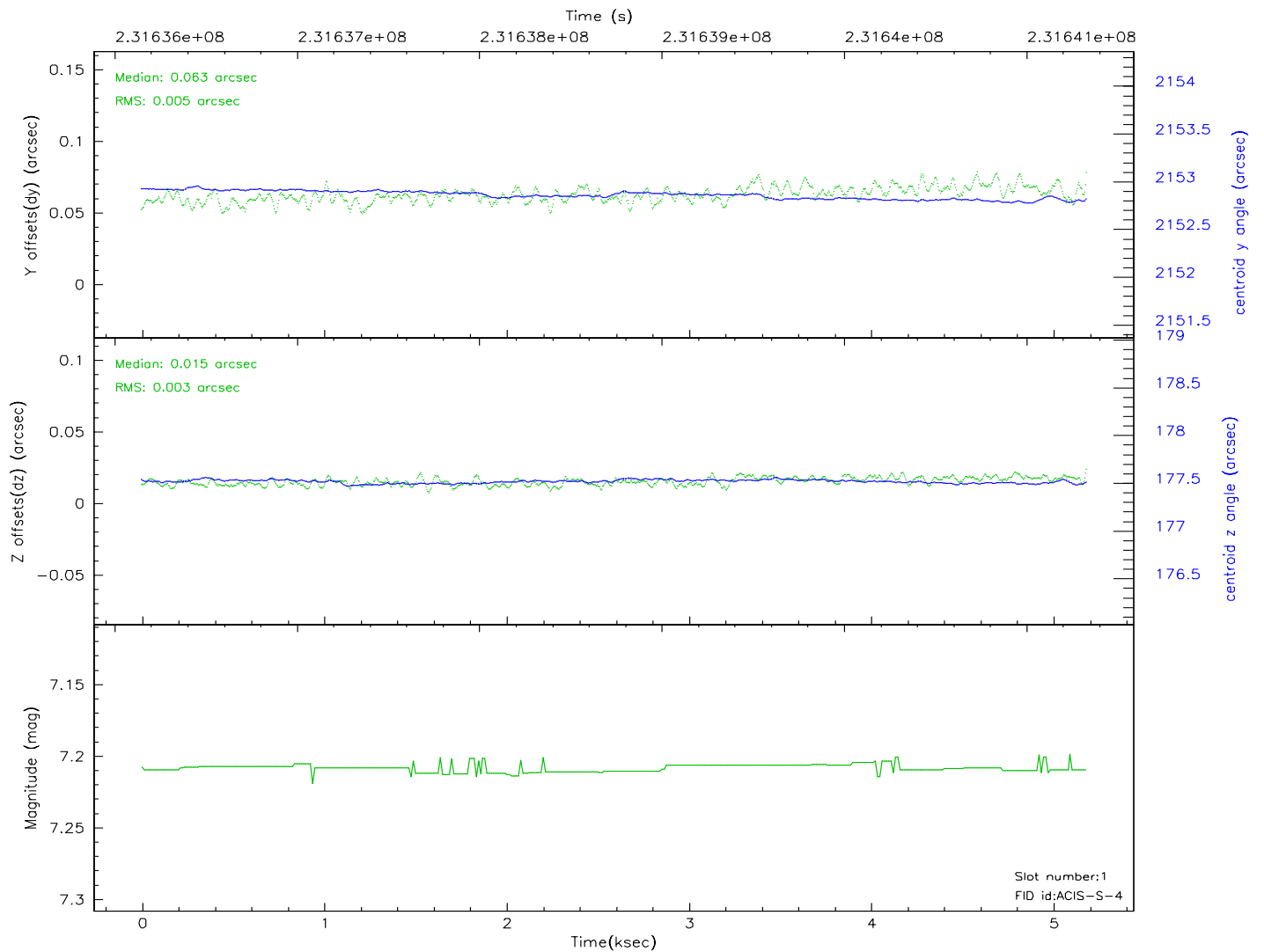
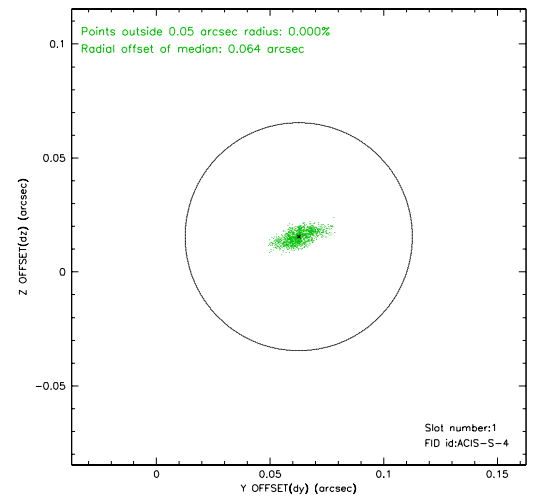
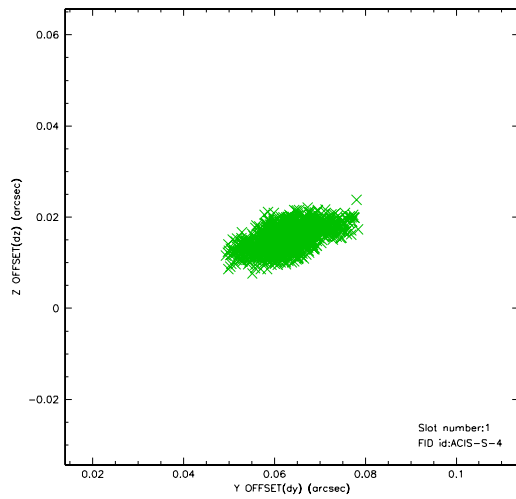


## 2.5 FID Slots

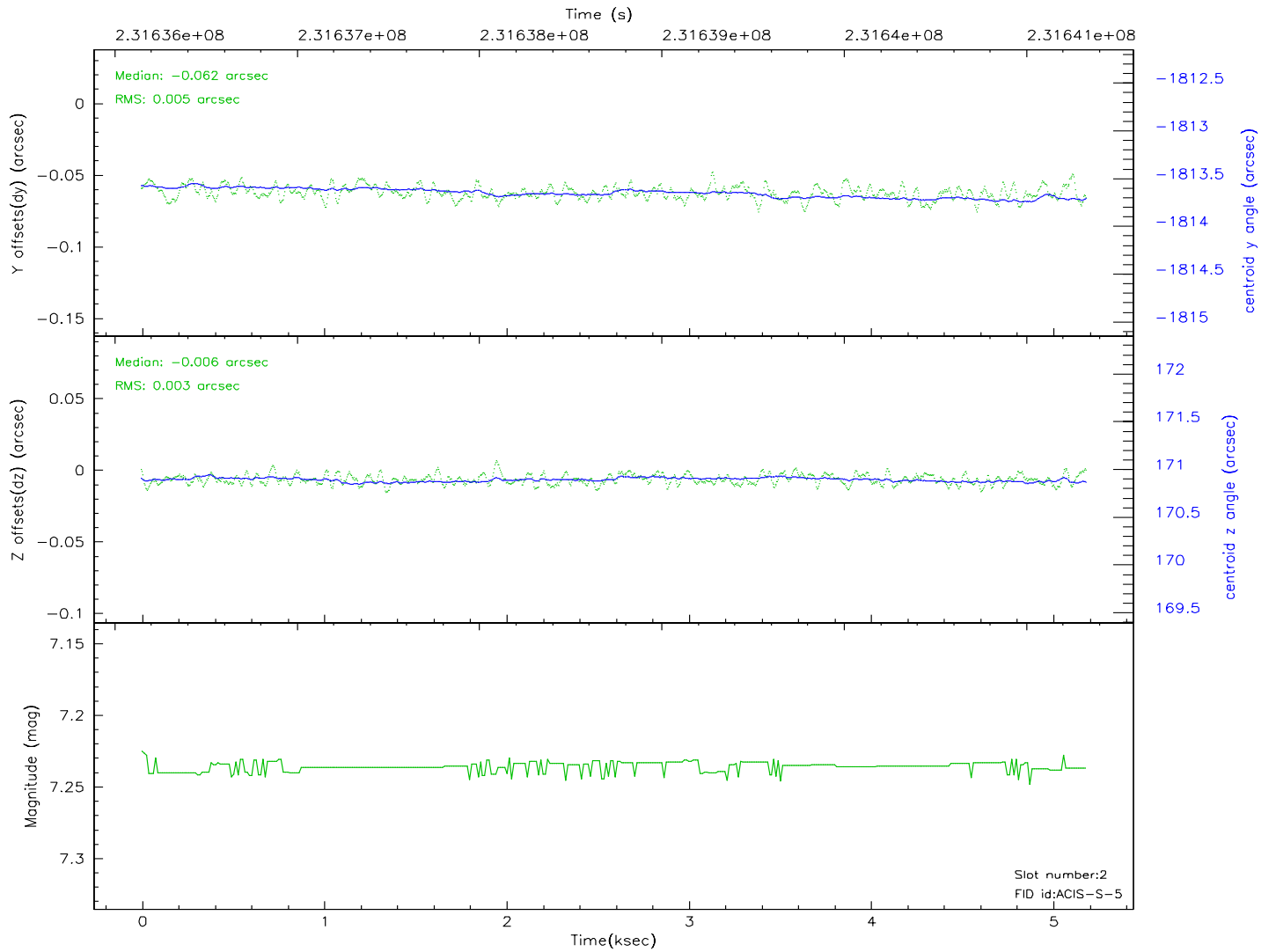
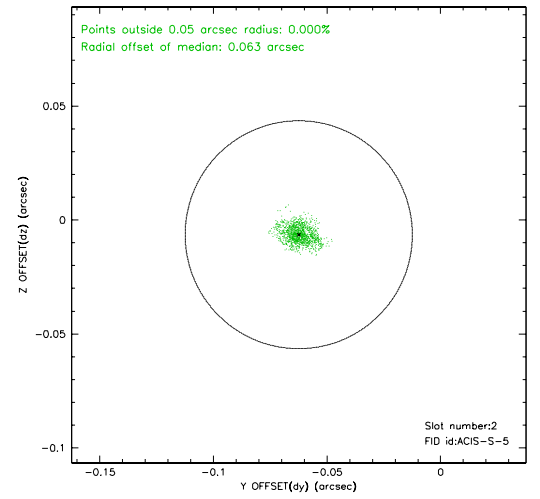
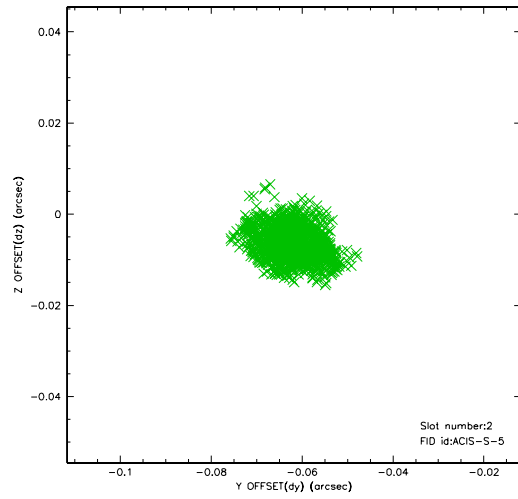
### 2.5.1 Slot 0



## 2.5.2 Slot 1



### 2.5.3 Slot 2





### 3 Point Sources

## A Summary

### A.1 Status

V&V Scientist	Beth Sundheim
V&V Date (YYYY-MM-DD)	2006.03.03
V&V Edition	1
V&V Disposition and Status	OK
V&V Charge Time	5.1876

### A.2 Comments

Window constraint satisfied.