

V&V Reference Report

L2 ASCDS Version : 7.6.7.1

Observation 5726 - L2 Version 002
Chandra X-Ray Center

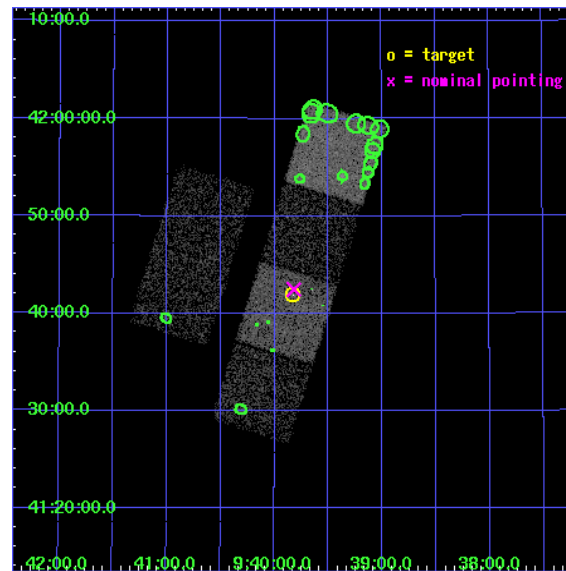
L2 Processing Date : Mar 16 2006

Contents

1	Front	2
2	OBI	3
2.1	OBI	3
2.1.1	Images	3
2.1.2	Bias	3
2.1.3	Parameters	4
2.1.4	Events	4
2.2	Compared Parameters	5
2.3	Aspect	6
2.4	Star Slots	9
2.4.1	Slot 3	9
2.4.2	Slot 4	10
2.4.3	Slot 5	11
2.4.4	Slot 6	12
2.4.5	Slot 7	13
2.5	FID Slots	14
2.5.1	Slot 0	14
2.5.2	Slot 1	15
2.5.3	Slot 2	16
3	Point Sources	17
A	Summary	18
A.1	Status	18
A.2	Comments	18

1 Front

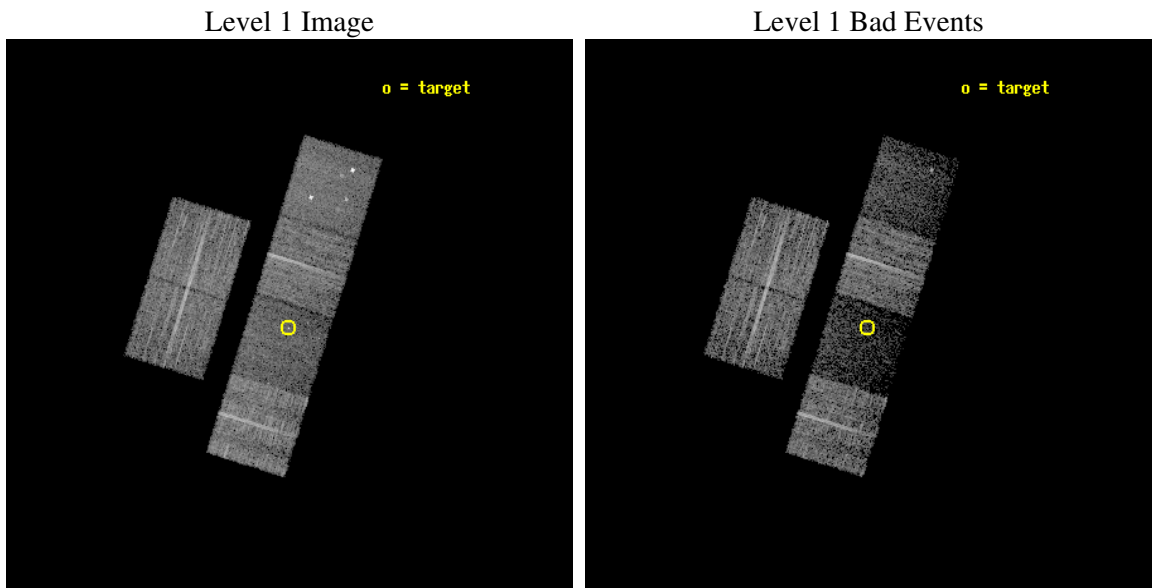
seq_num	701148
obs_id	5726
title	What kind of Jets does Nature make? X-ray characterization of the FIRST Flat Spectrum Sample
observer	Dr. Giovanni Fossati
object	FIRST J093949.6+414154
dtcycle	0
cycle	P
ra_targ	144.956667
dec_targ	41.698444
ra_nom	144.95496342201
dec_nom	41.708058869934
roll_nom	107.31517531221
revision	2
ontime	7171.1999732852
livetime	7080.3939212452
ontime2	7171.1999732852
ontime3	7171.1999732852
ontime5	7171.1999732852
ontime6	7171.1999732852
ontime7	7171.1999732852
ontime8	7171.1999732852
l2events	37227



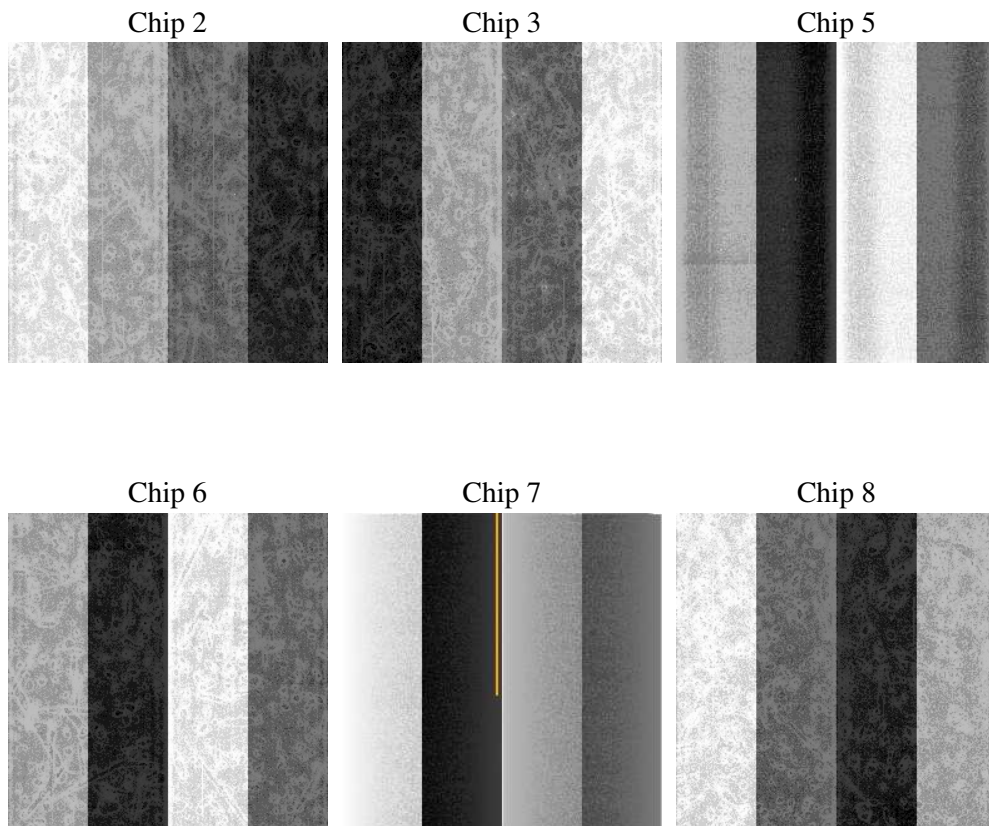
2 OBI

2.1 OBI

2.1.1 Images



2.1.2 Bias



2.1.3 Parameters

obi_num	0
ascdsver	7.6.7.1
caldsver	3.2.1
date	2006-03-16T17:31:54
revision	2

sched_exp_time	7000.000000
ontime	8954.9105937481
ontime2	8954.9105937481
ontime3	8954.9105937481
ontime5	8954.9105937481
ontime6	8954.9105838537
ontime7	8954.9105937481
ontime8	8954.9105937481
l1events	246751

2.1.4 Events

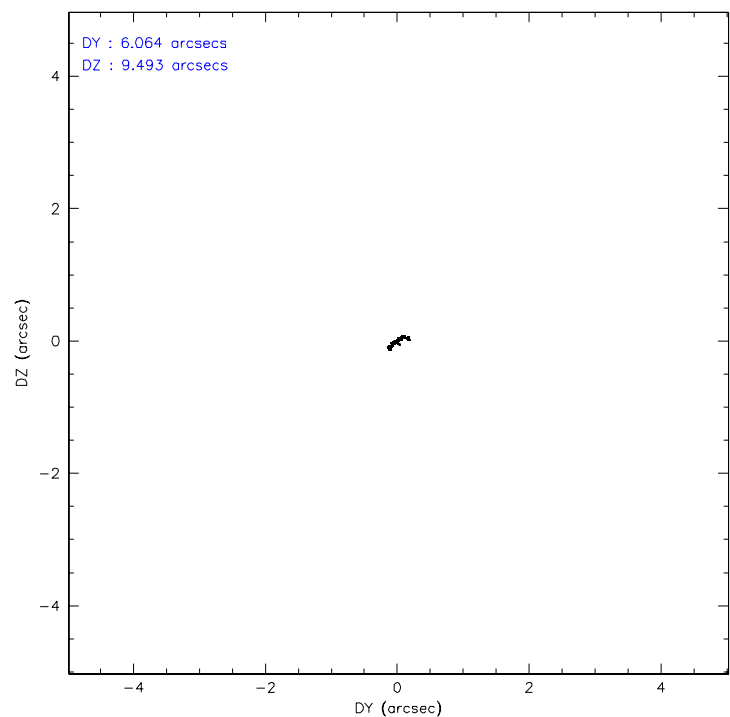
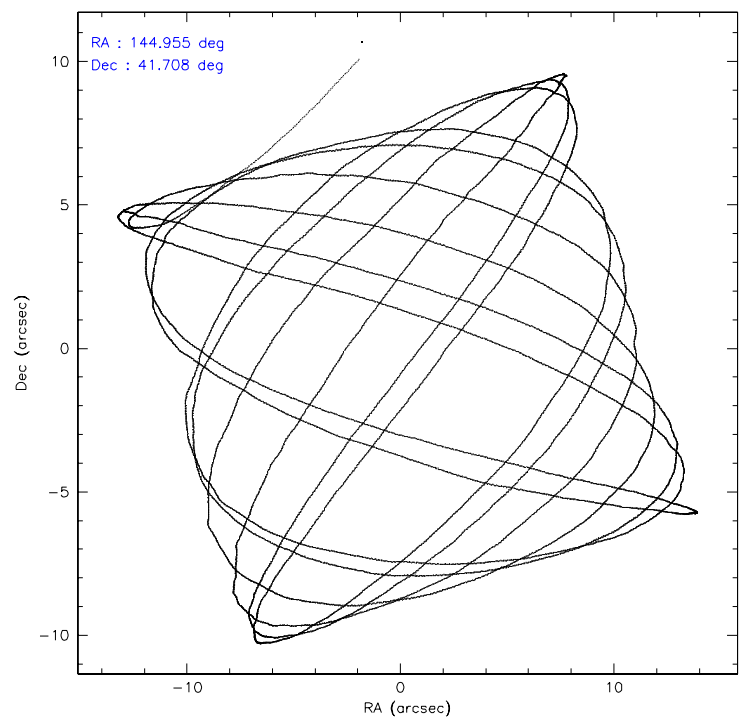
	ccd 2	ccd 3	ccd 5	ccd 6	ccd 7	ccd 8
level 1 events	46501	40986	40588	42959	25254	50463
rejected events	43512	38162	20749	39858	13965	40394
rejected %	93%	93%	51%	92%	55%	80%

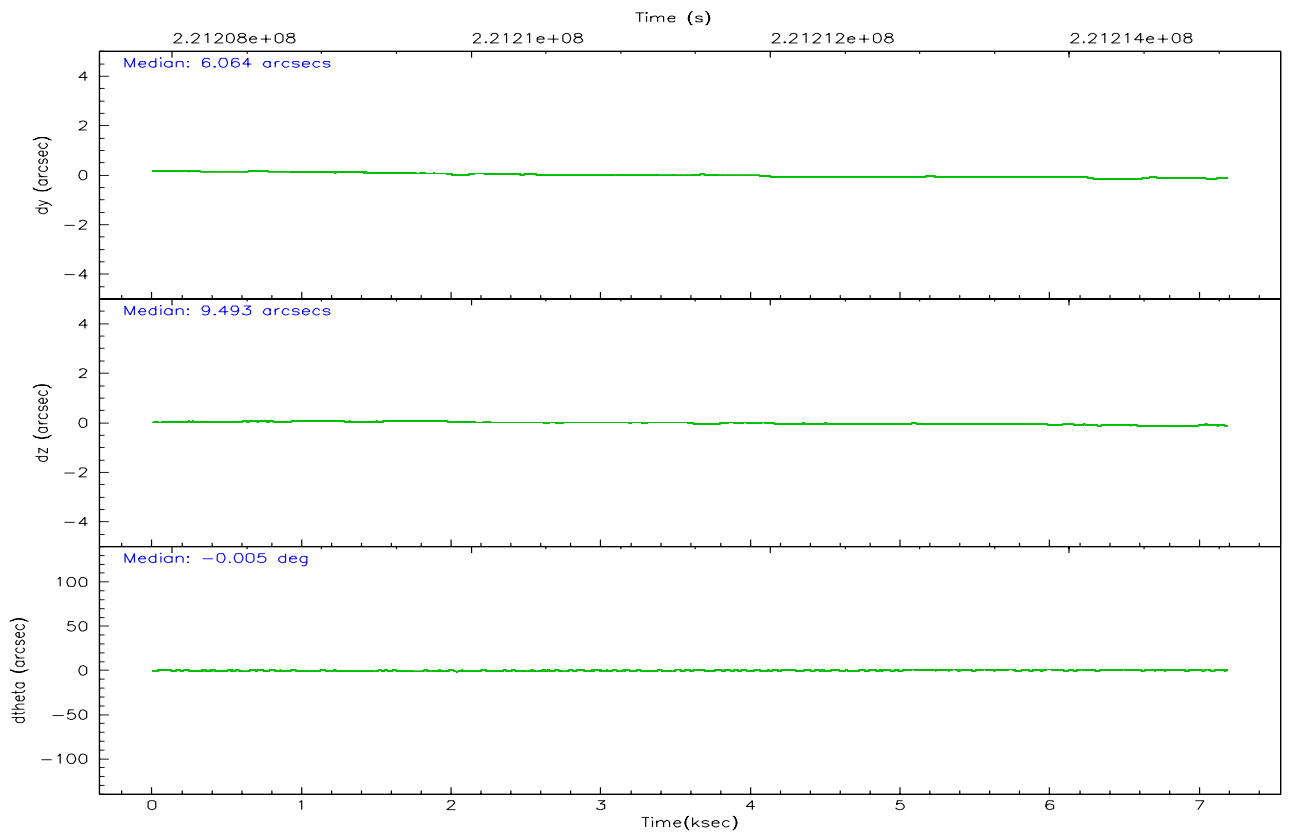
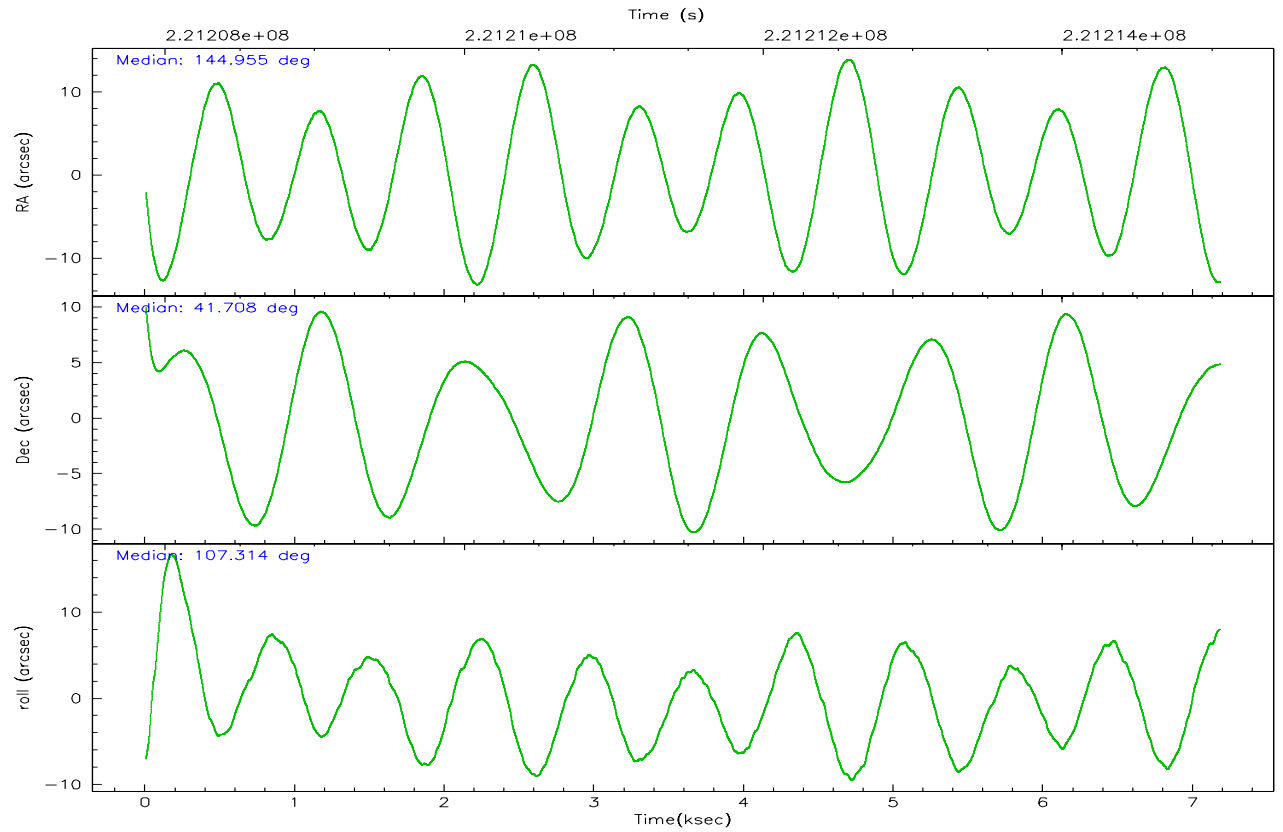
	ccd 2	ccd 3	ccd 5	ccd 6	ccd 7	ccd 8
grade 0 events	1444	1473	4262	1545	1363	3581
	3%	3%	10%	3%	5%	7%
grade 1 events	27	32	231	18	36	41
	0%	0%	0%	0%	0%	0%
grade 2 events	924	735	8206	860	3981	2909
	1%	1%	20%	2%	15%	5%
grade 3 events	386	411	739	418	1032	1323
	0%	1%	1%	0%	4%	2%
grade 4 events	438	394	777	414	1112	1274
	0%	0%	1%	0%	4%	2%
grade 5 events	696	867	2176	862	2074	1468
	1%	2%	5%	2%	8%	2%
grade 6 events	578	505	10899	639	6545	3389
	1%	1%	26%	1%	25%	6%
grade 7 events	42008	36569	13298	38203	9111	36478
	90%	89%	32%	88%	36%	72%

2.2 Compared Parameters

Parameter	Planned	Actual	Parameter	Planned	Actual
Instrument	ACIS	ACIS	Obspar format version number	6	6
Detector	ACIS-235678	ACIS-235678	Obspar file type	PREDICTED	ACTUAL
Grating	NONE	NONE	Obspar update status	NONE	UPDATED
Data mode	VFAINT	VFAINT	On-chip summing requested	N	N
Observation mode	POINTING	POINTING	Subarray requested	NONE	NONE
Pointing RA	144.982182	144.9549634220145	Alternating exposures requested	N	N
Pointing Dec	41.689843	41.70805886993406	Primary exposure time	0.000000	3.2
Pointing Roll	107.140454	107.315175312211			
SIM focus pos (mm)	-0.684267	-0.6828225247311905			
SIM defocus (mm)	0	0.001444936568705701			
SIM translation stage pos (mm)	-190.132523	-190.1400660498719			
SIM translation stage offset (mm)	0	0.00754346686406393			
Observation start time	221208059.184000	221206102.64968			
Observation start date	2005-01-04T06:39:55	2005-01-04T06:08:22			
Observation end time	221215059.184000	221215958.53763			
Observation end date	2005-01-04T08:36:35	2005-01-04T08:52:38			
Read mode	TIMED	TIMED			

2.3 Aspect



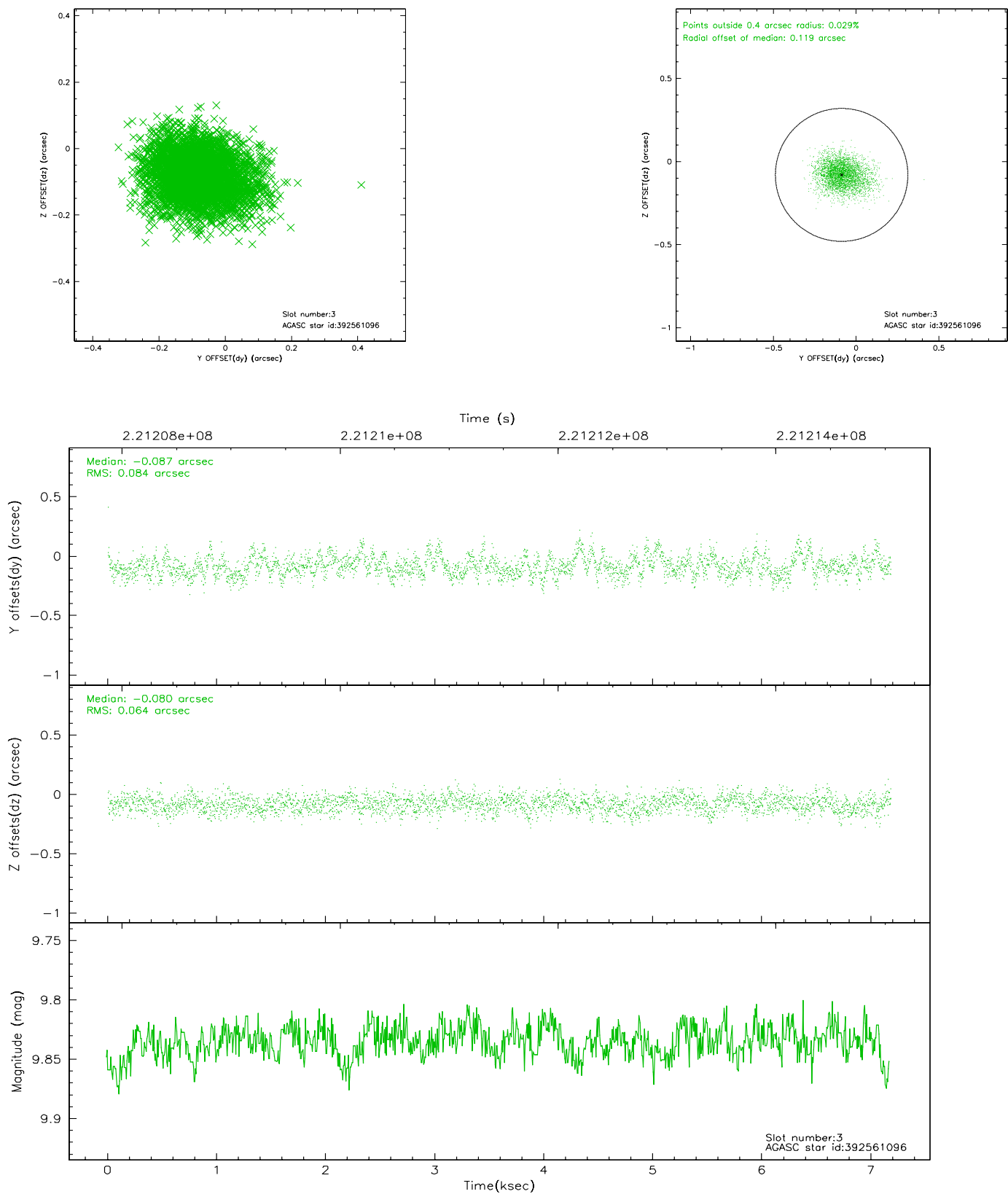


Slot Statistics

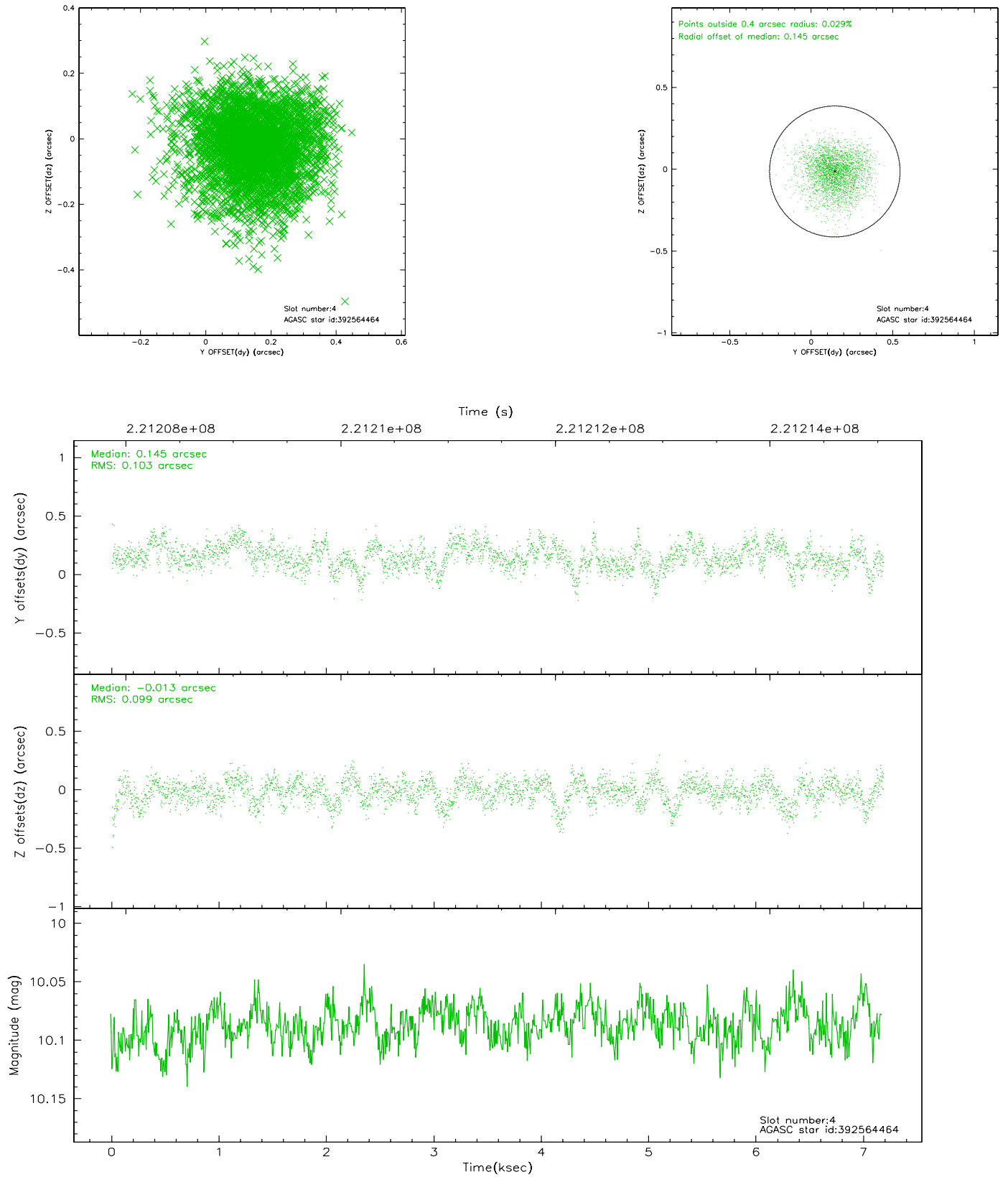
slot	status	id	mag	n_pts	med_dy	med_dz	dr1	dr2	ra	dec	mean_y	mean_z
0	FID	ACIS-S-2	7.10	1751	-0.059	-0.027	0.008	0.027	0.000000	0.000000	-758.83	-1730.75
1	FID	ACIS-S-4	7.21	1751	0.080	0.036	0.007	0.032	0.000000	0.000000	2154.20	177.00
2	FID	ACIS-S-5	7.23	1751	-0.051	-0.001	0.008	0.026	0.000000	0.000000	-1810.65	171.50
3	GUIDE	392561096	9.83	3502	-0.087	-0.080	0.111	0.183	143.974322	41.994916	1859.08	2248.46
4	GUIDE	392564464	10.09	3501	0.145	-0.013	0.154	0.248	144.802508	41.190441	-1573.58	995.48
5	GUIDE	392564728	8.01	3501	-0.046	0.040	0.070	0.125	144.927557	42.064957	1332.80	-258.08
6	GUIDE	392568728	8.91	3501	-0.128	0.067	0.092	0.145	144.864302	42.285874	2143.23	-332.43
7	GUIDE	392571296	10.71	3497	0.113	-0.009	0.212	0.362	144.839482	41.129508	-1812.73	964.01

2.4 Star Slots

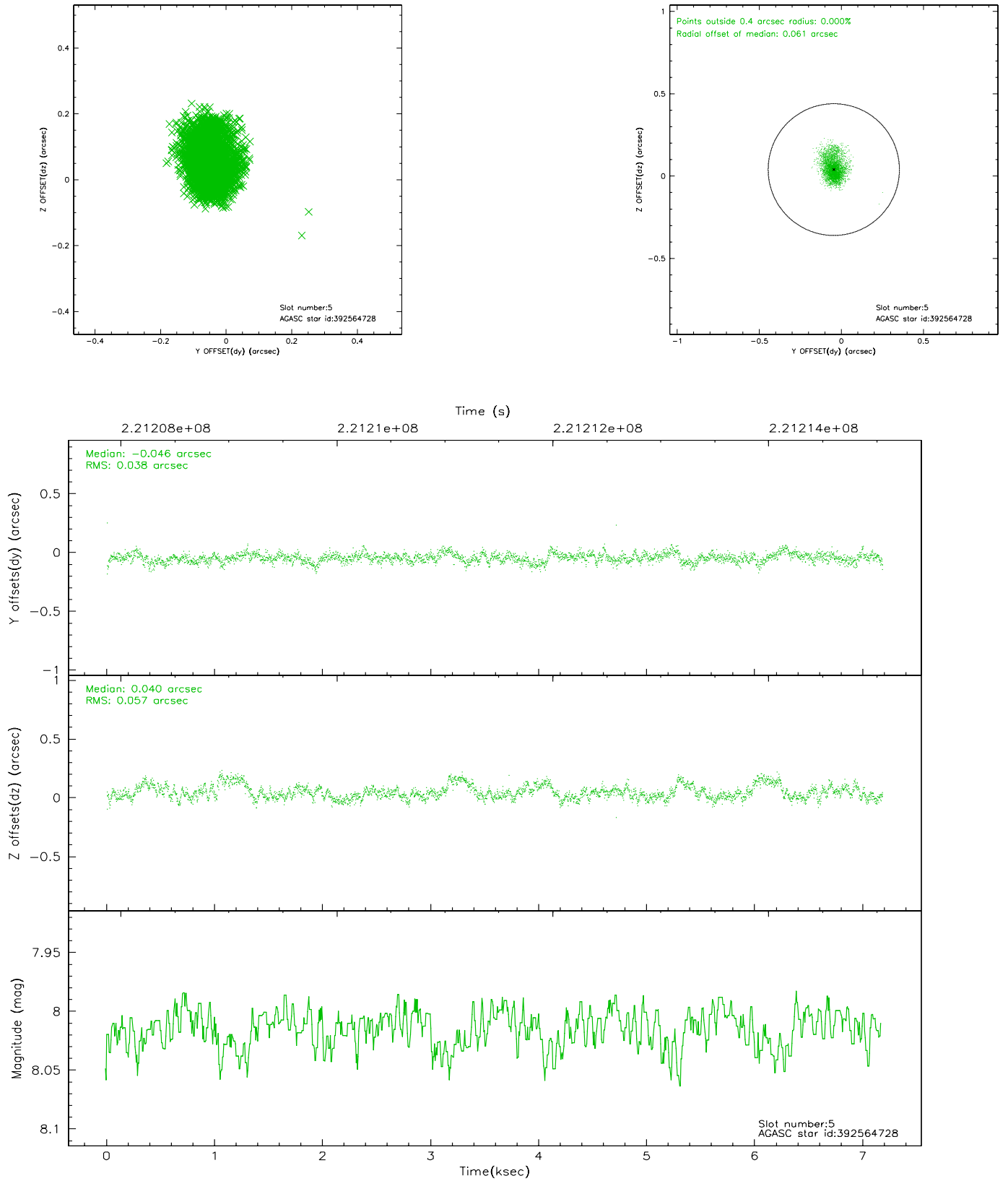
2.4.1 Slot 3



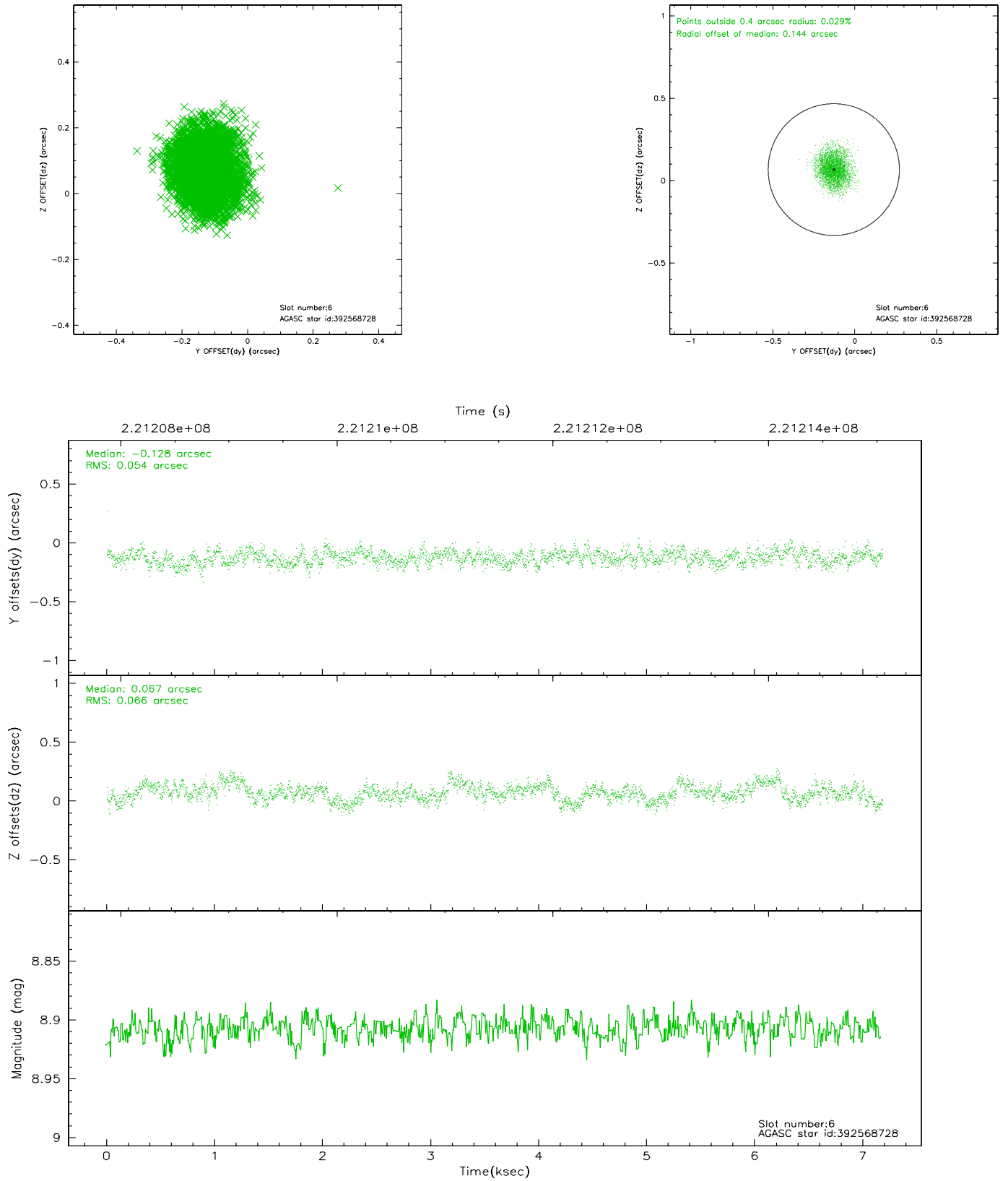
2.4.2 Slot 4



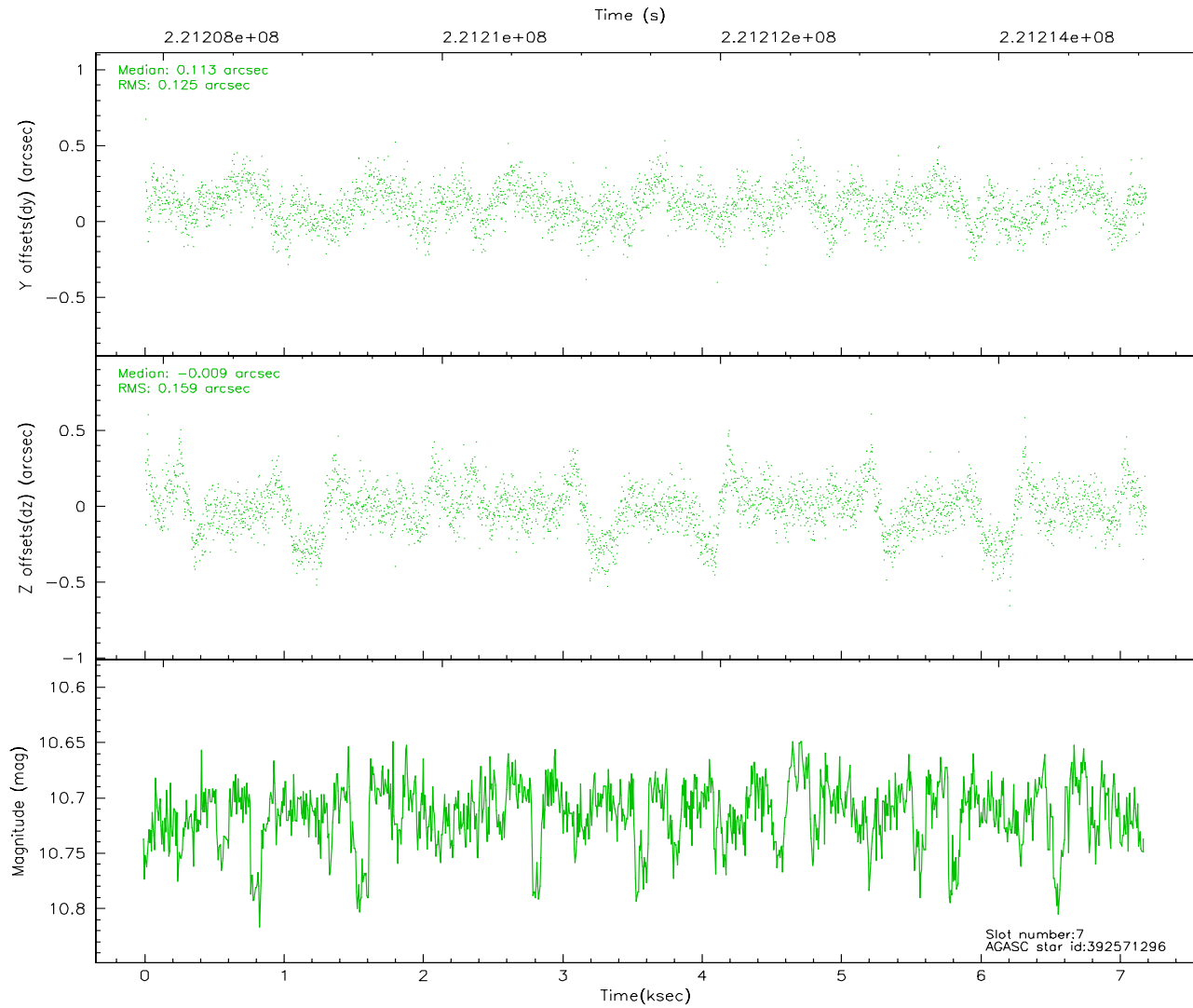
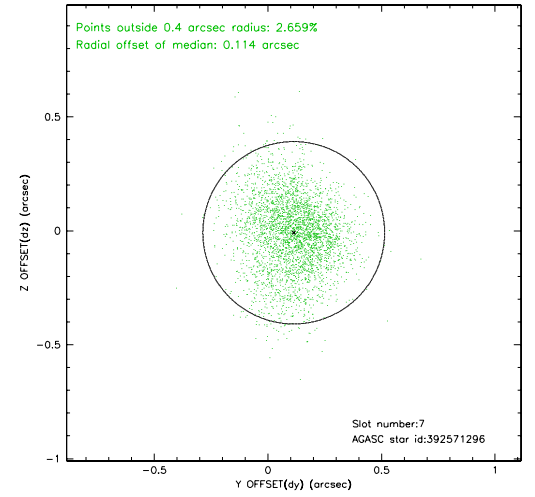
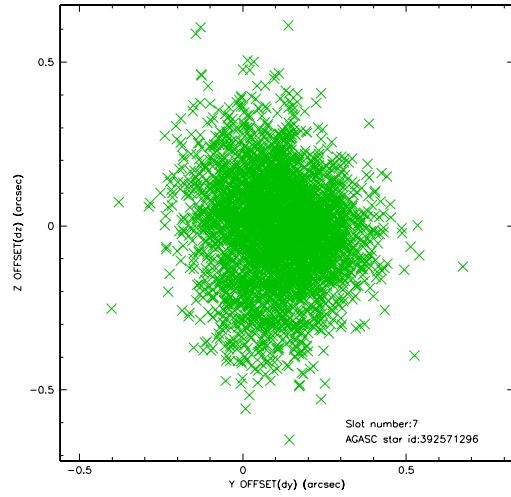
2.4.3 Slot 5



2.4.4 Slot 6

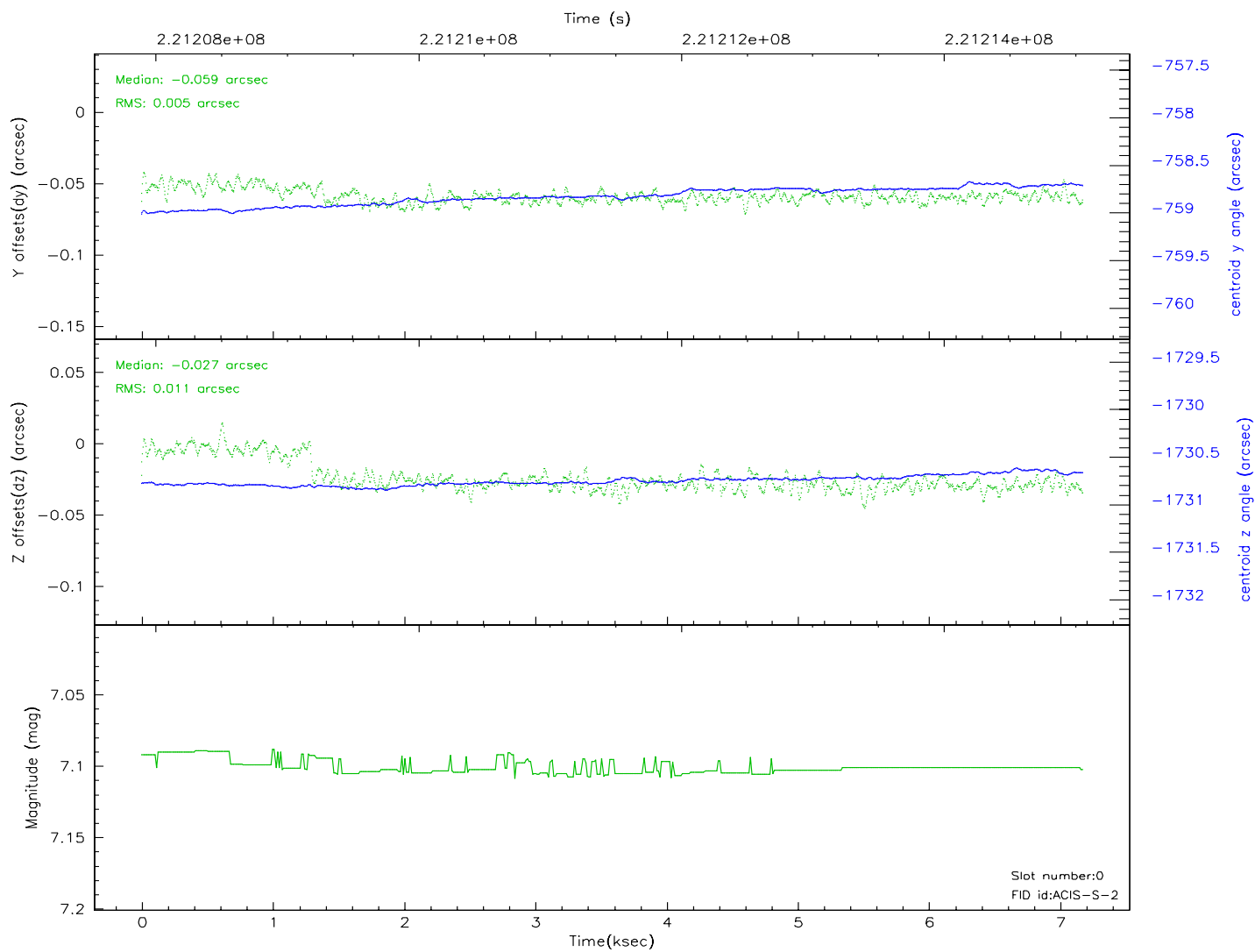
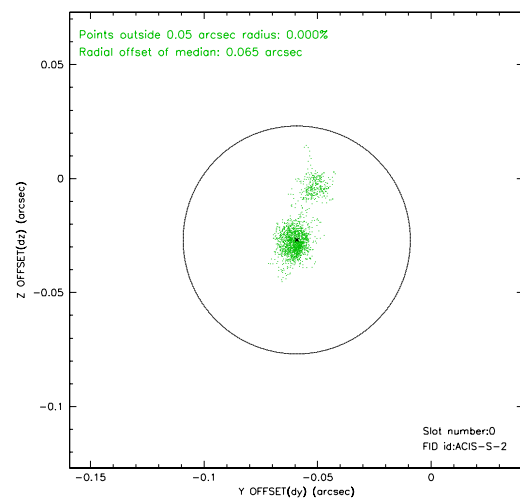
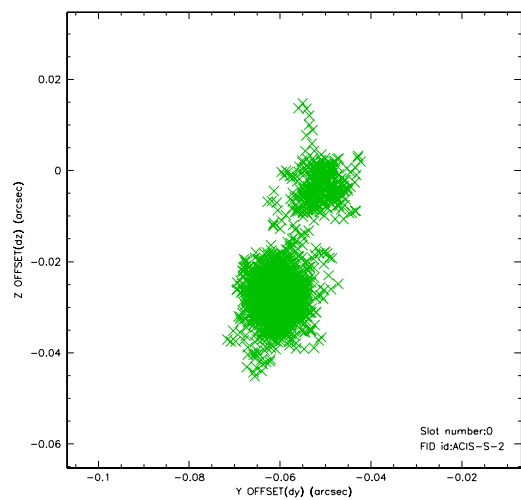


2.4.5 Slot 7

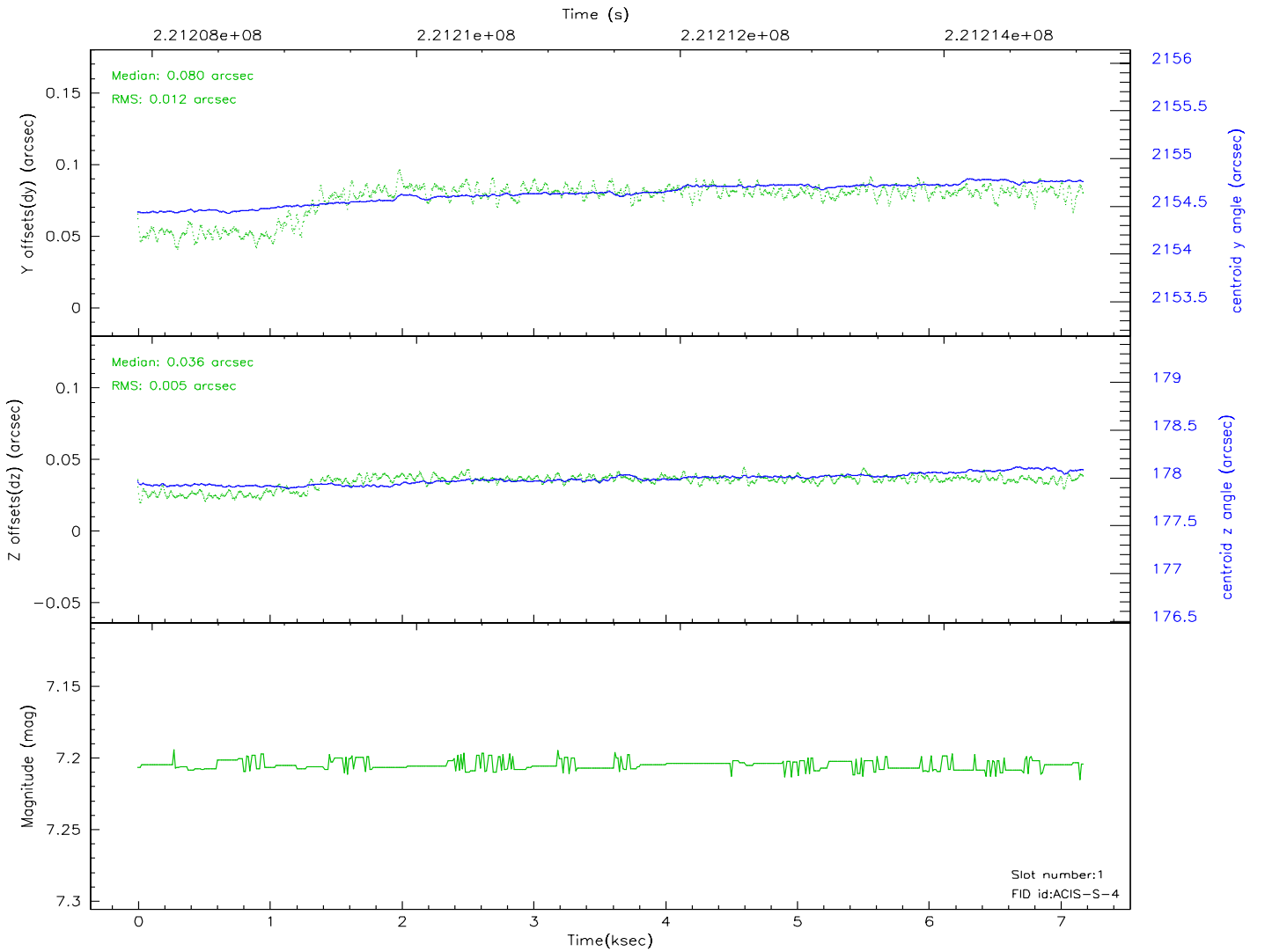
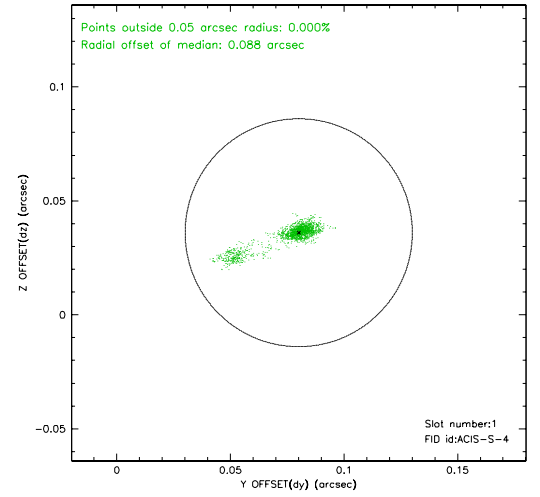
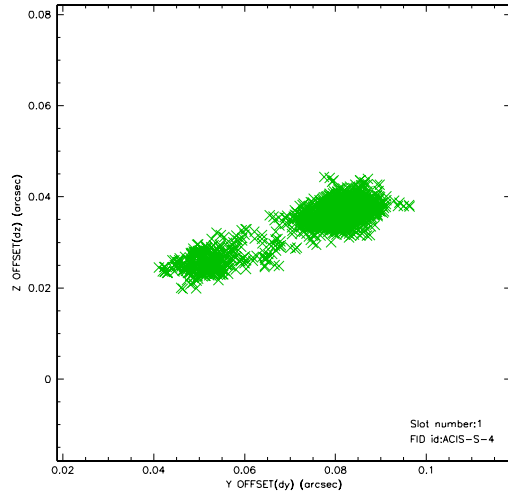


2.5 FID Slots

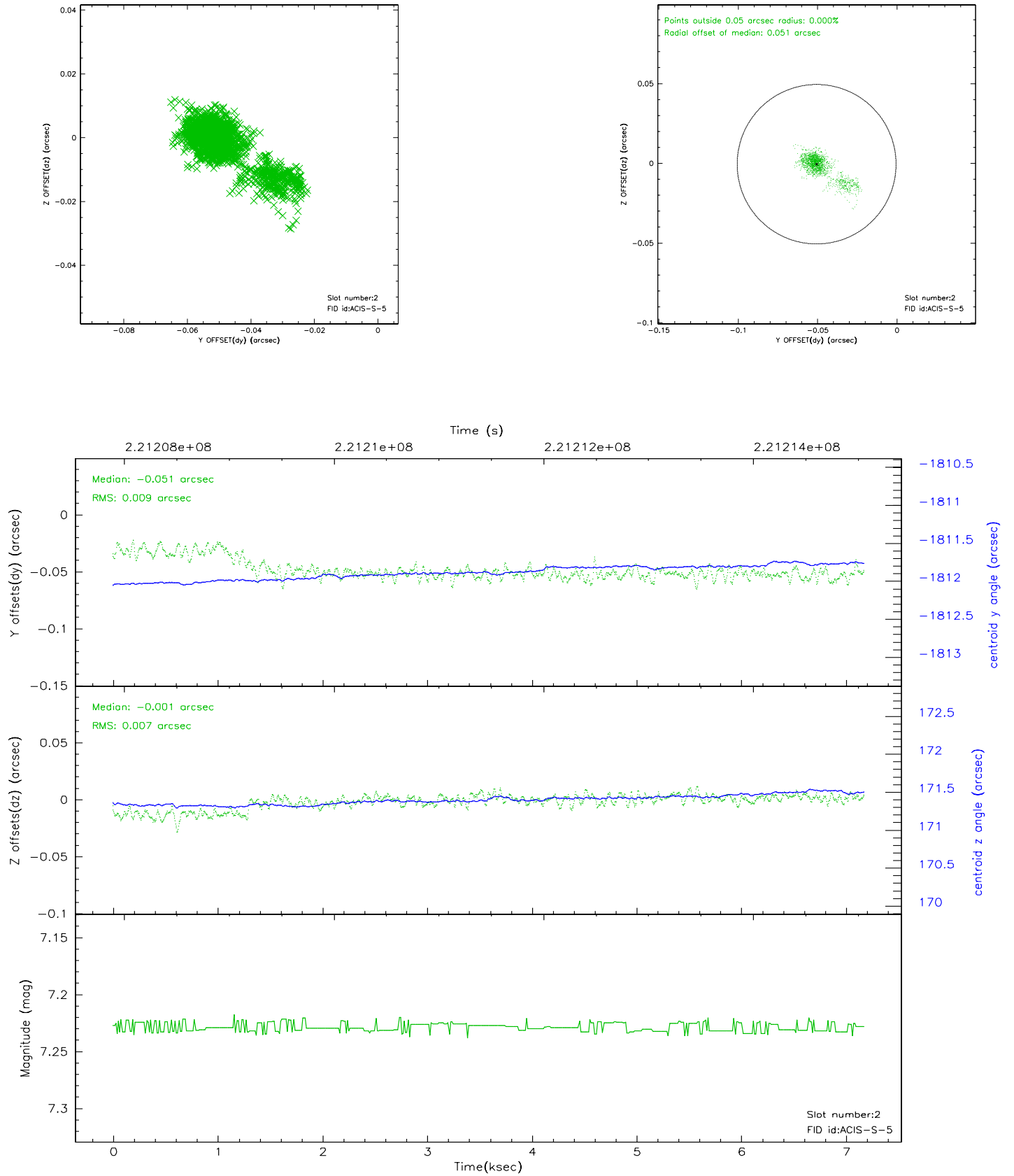
2.5.1 Slot 0



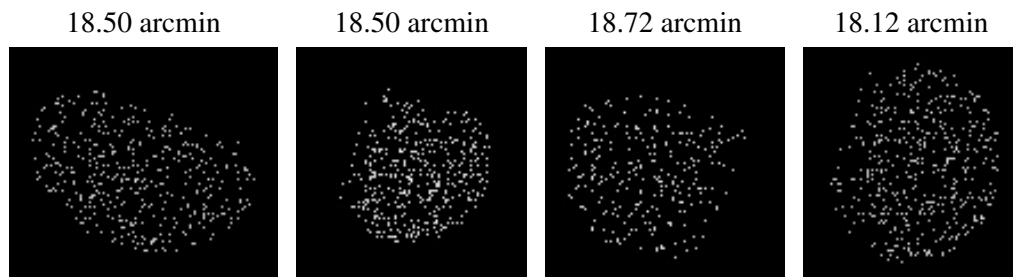
2.5.2 Slot 1



2.5.3 Slot 2



3 Point Sources



A Summary

A.1 Status

V&V Scientist	Jen Lauer
V&V Date (YYYY-MM-DD)	2006.03.16
V&V Edition	1
V&V Disposition and Status	OK
V&V Charge Time	7.171199

A.2 Comments