

V&V Reference Report

L2 ASCDS Version : 7.6.7

Observation 5695 - L2 Version 002
Chandra X-Ray Center

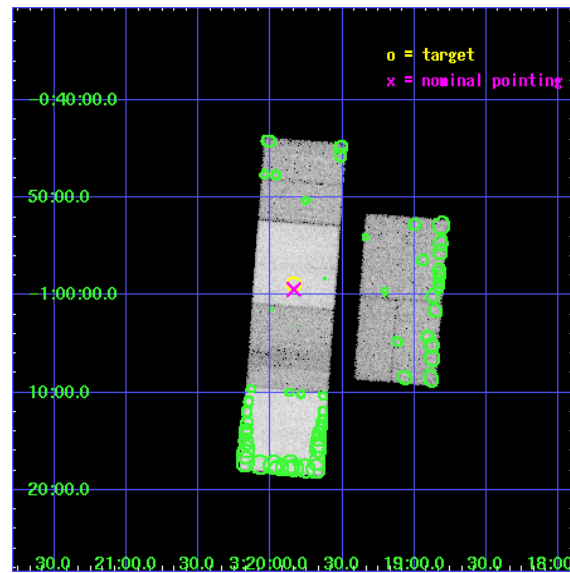
L2 Processing Date: Feb 27 2006

Contents

1	Front	2
2	OBI	3
2.1	OBI	3
2.1.1	Images	3
2.1.2	Bias	3
2.1.3	Parameters	4
2.1.4	Events	4
2.2	Compared Parameters	5
2.3	Aspect	6
2.4	Star Slots	9
2.4.1	Slot 3	9
2.4.2	Slot 4	10
2.4.3	Slot 5	11
2.4.4	Slot 6	12
2.4.5	Slot 7	13
2.5	FID Slots	14
2.5.1	Slot 0	14
2.5.2	Slot 1	15
2.5.3	Slot 2	16
3	Point Sources	17
A	Summary	18
A.1	Status	18
A.2	Comments	18

1 Front

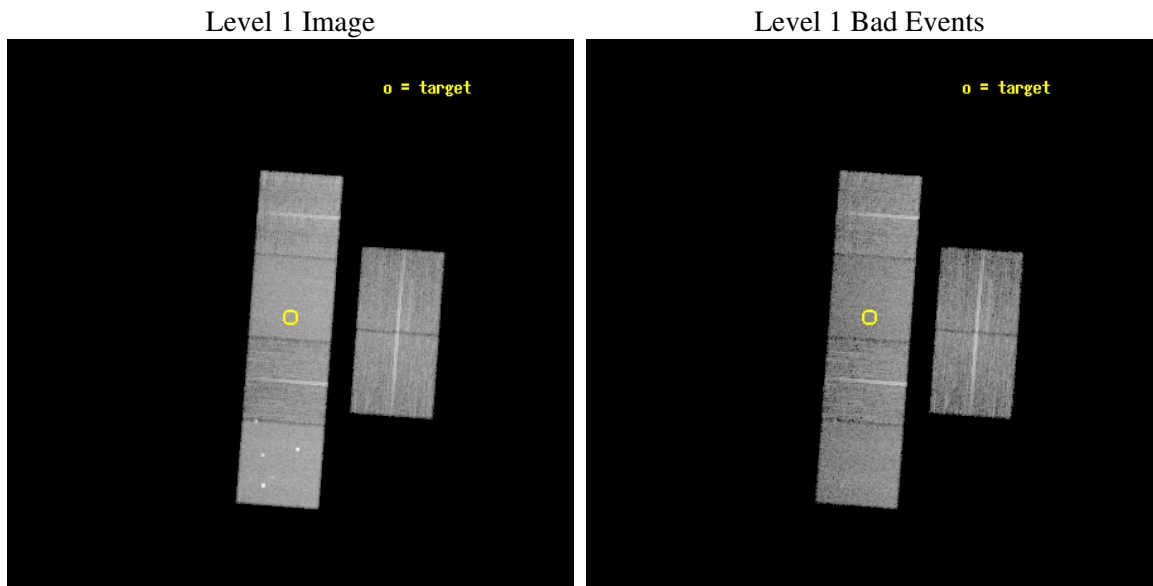
seq_num	701117
obs_id	5695
title	Studying the X-ray properties of SDSS candidate Type II quasars with exploratory Chandra observations
observer	Dr. Cristian Vignali
object	SDSS J031950.54-005850.6
dtcycle	0
cycle	P
ra_targ	49.960417
dec_targ	-0.980722
ra_nom	49.959435352785
dec_nom	-0.99028863501482
roll_nom	274.25157383909
revision	2
ontime	11638.399956644
livetime	11491.027528589
ontime2	11638.399956644
ontime3	11638.399956644
ontime5	11638.399956644
ontime6	11638.399956644
ontime7	11638.399956644
ontime8	11638.399956644
l2events	213184



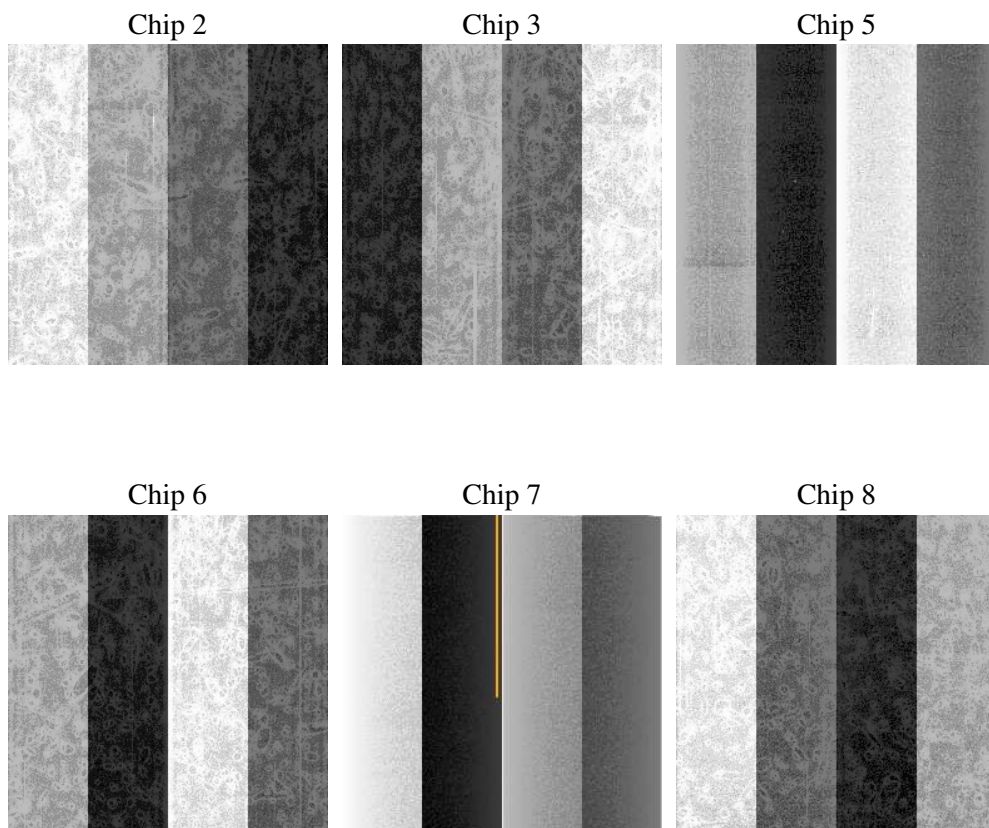
2 OBI

2.1 OBI

2.1.1 Images



2.1.2 Bias



2.1.3 Parameters

obi_num	1
ascdsver	7.6.7
caldsver	3.2.1
date	2006-02-27T06:33:35
revision	2

sched_exp_time	11471.664000
ontime	11641.674717873
ontime2	11641.674687982
ontime3	11641.674717873
ontime5	11641.674717873
ontime6	11641.674687982
ontime7	11641.674717873
ontime8	11644.915708035
l1events	708928

2.1.4 Events

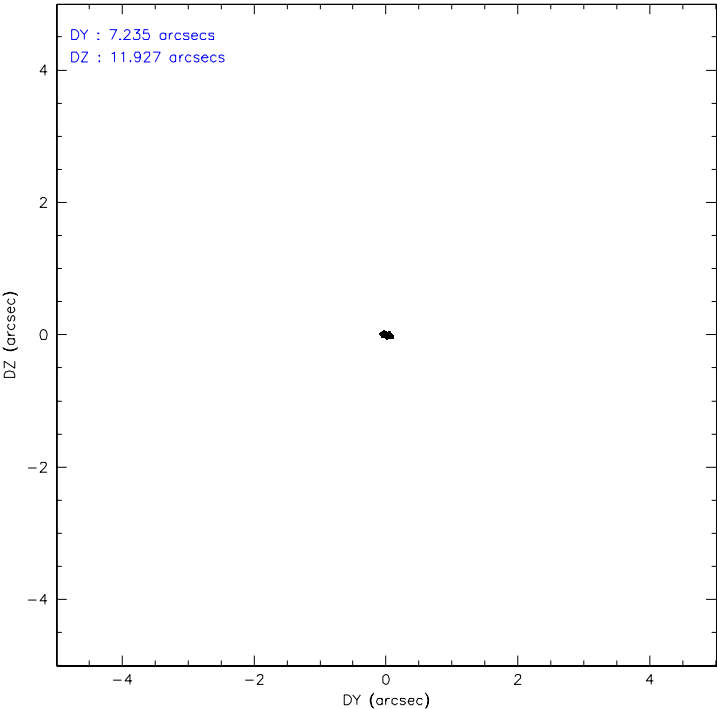
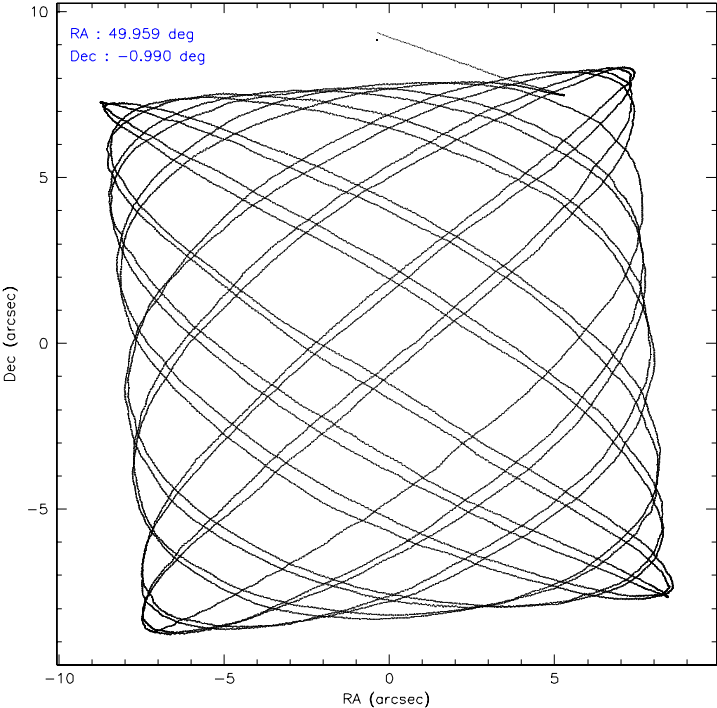
	ccd 2	ccd 3	ccd 5	ccd 6	ccd 7	ccd 8
level 1 events	100921	97143	147452	101601	135248	126563
rejected events	77230	73707	73901	78254	75676	88753
rejected %	76%	75%	50%	77%	55%	70%

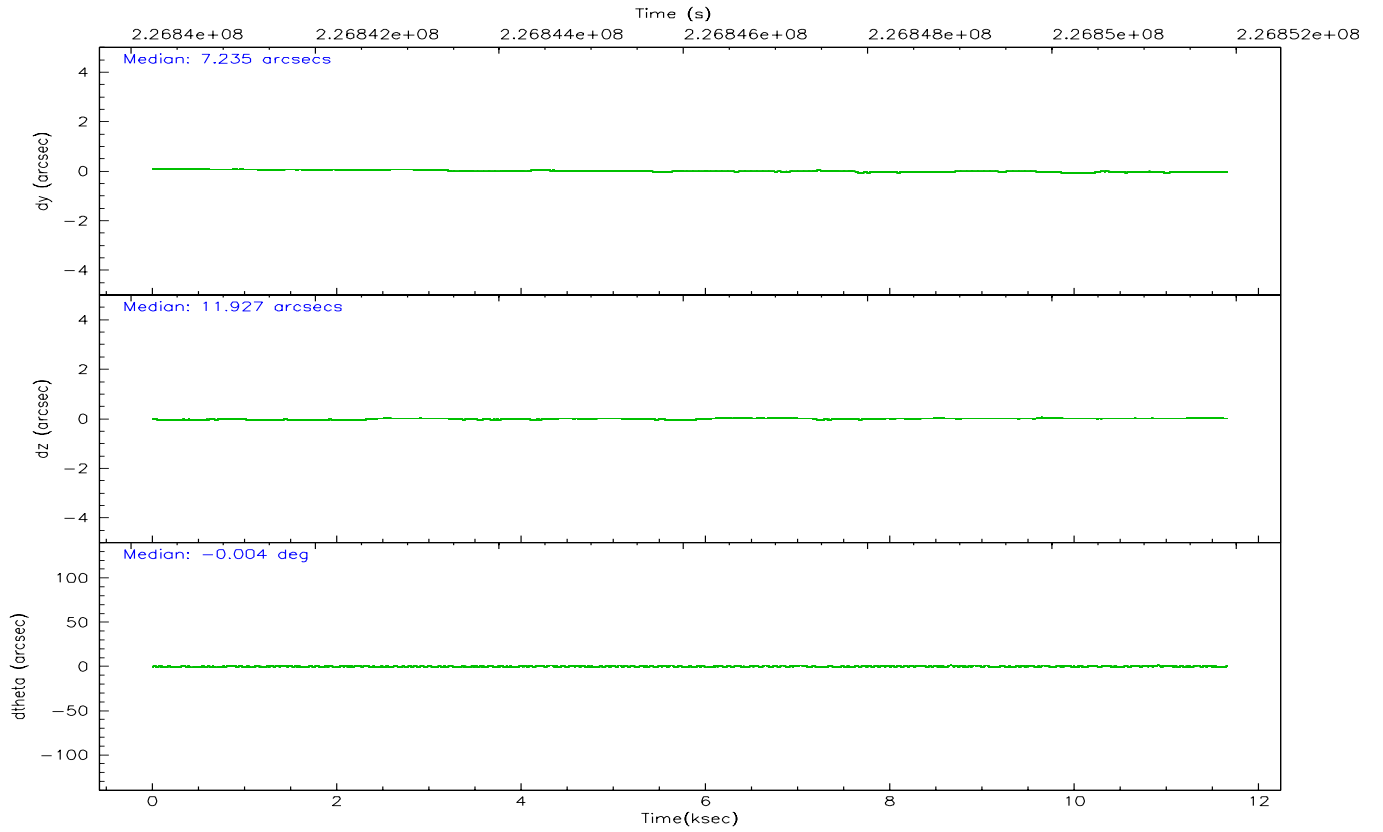
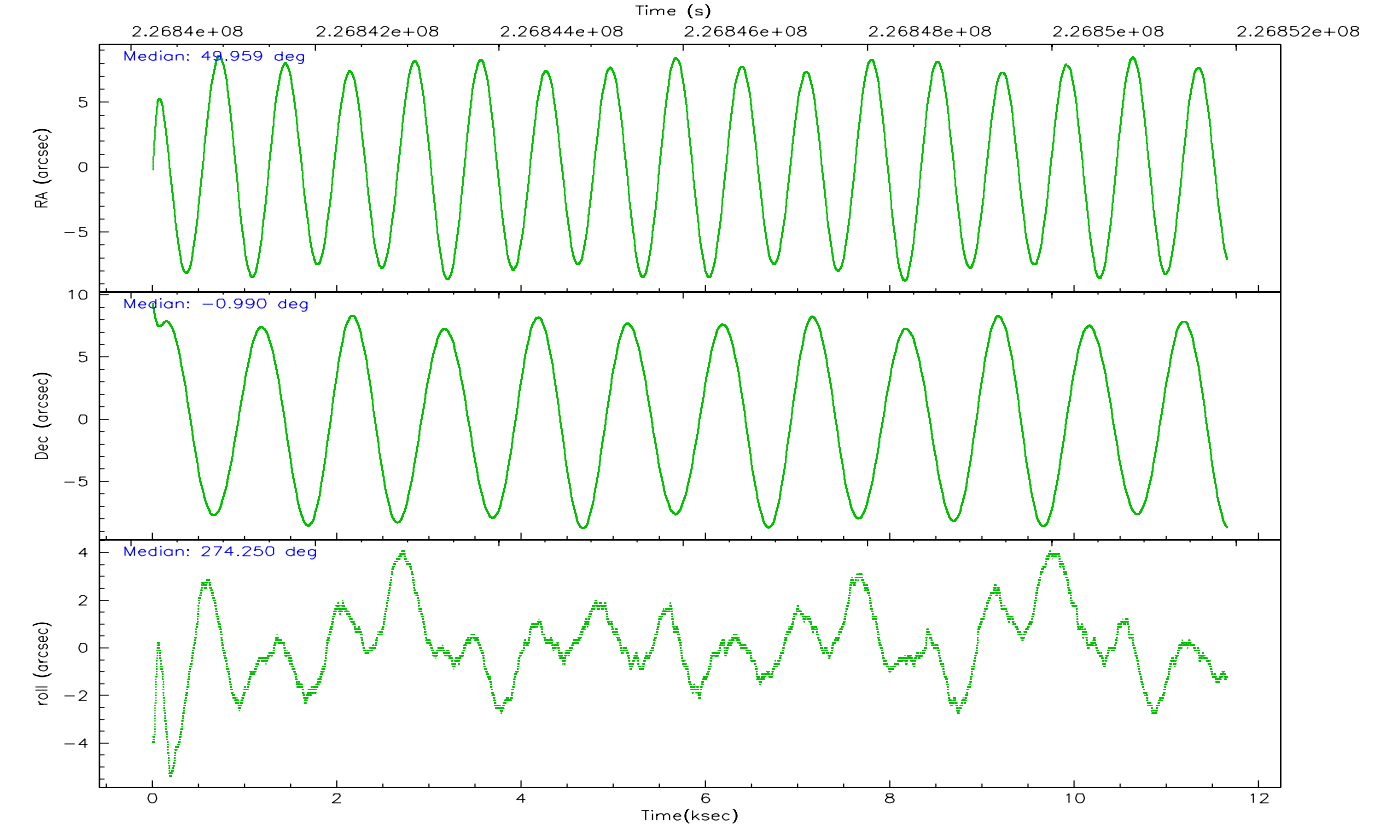
	ccd 2	ccd 3	ccd 5	ccd 6	ccd 7	ccd 8
grade 0 events	14466	13779	8123	12685	4177	17175
	14%	14%	5%	12%	3%	13%
grade 1 events	108	97	283	74	86	120
	0%	0%	0%	0%	0%	0%
grade 2 events	3524	3524	23083	4238	14492	7132
	3%	3%	15%	4%	10%	5%
grade 3 events	1479	1580	1649	1512	2957	3061
	1%	1%	1%	1%	2%	2%
grade 4 events	1452	1586	1583	1400	2841	2949
	1%	1%	1%	1%	2%	2%
grade 5 events	3476	3977	6369	3982	8049	5257
	3%	4%	4%	3%	5%	4%
grade 6 events	2800	2999	39153	3544	35156	7574
	2%	3%	26%	3%	25%	5%
grade 7 events	73616	69601	67209	74166	67490	83295
	72%	71%	45%	72%	49%	65%

2.2 Compared Parameters

Parameter	Planned	Actual	Parameter	Planned	Actual
Instrument	ACIS	ACIS	Obspar format version number	6	6
Detector	ACIS-235678	ACIS-235678	Obspar file type	PREDICTED	ACTUAL
Grating	NONE	NONE	Obspar update status	NONE	UPDATED
Data mode	FAINT	FAINT	On-chip summing requested	N	N
Observation mode	POINTING	POINTING	Subarray requested	NONE	NONE
Pointing RA	49.943802	49.95943535278533	Alternating exposures requested	N	N
Pointing Dec	-0.968046	-0.9902886350148237	Primary exposure time	0.000000	3.2
Pointing Roll	274.094691	274.2515738390851			
SIM focus pos (mm)	-0.684267	-0.6828225247311905			
SIM defocus (mm)	0	0.001444936568705701			
SIM translation stage pos (mm)	-190.132523	-190.1400660498719			
SIM translation stage offset (mm)	0	0.00754346686406393			
Observation start time	226840428.184000	226839363.50432			
Observation start date	2005-03-10T11:12:44	2005-03-10T10:56:03			
Observation end time	226851900.184000	226852120.6549			
Observation end date	2005-03-10T14:23:56	2005-03-10T14:28:40			
Read mode	TIMED	TIMED			

2.3 Aspect



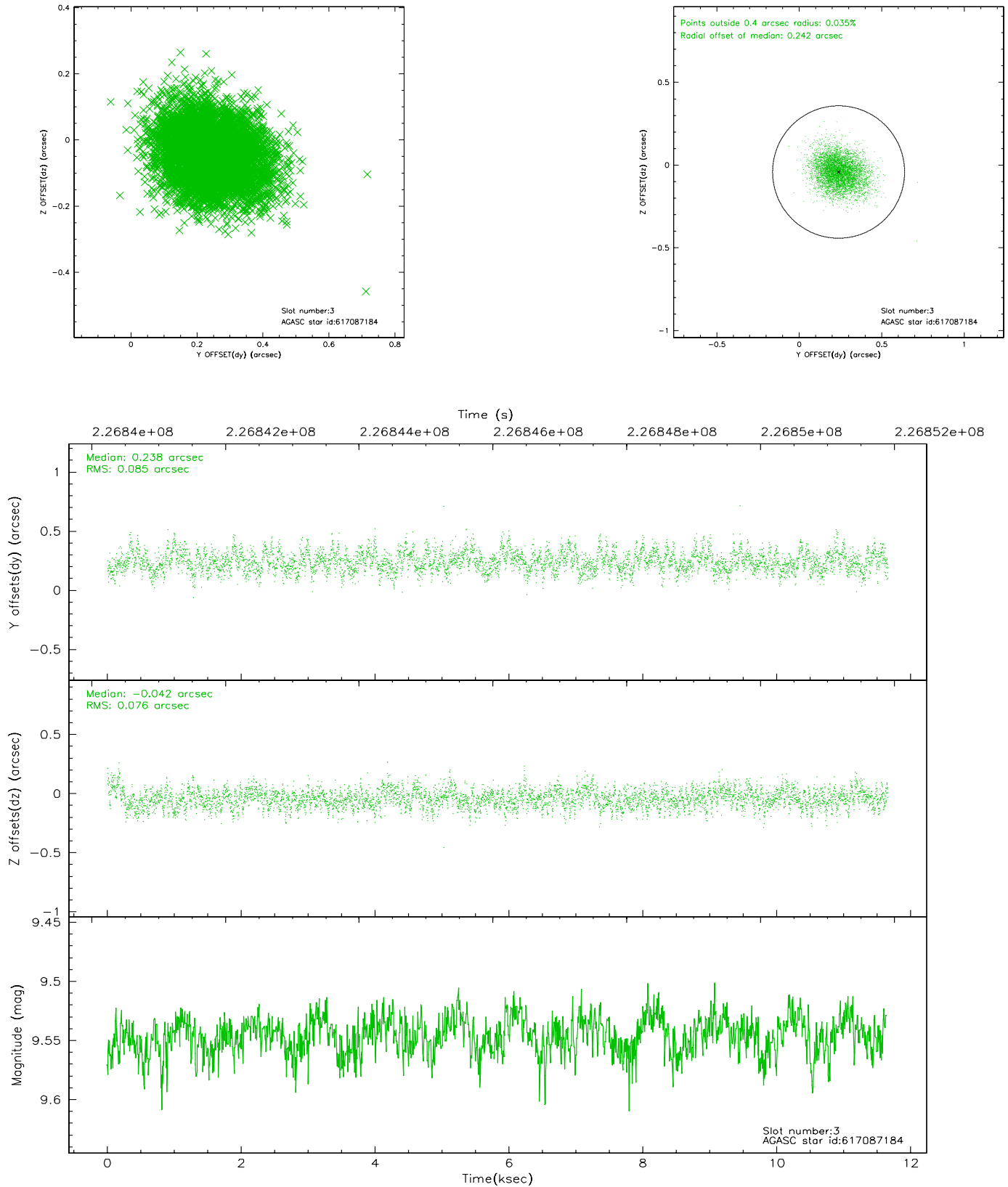


Slot Statistics

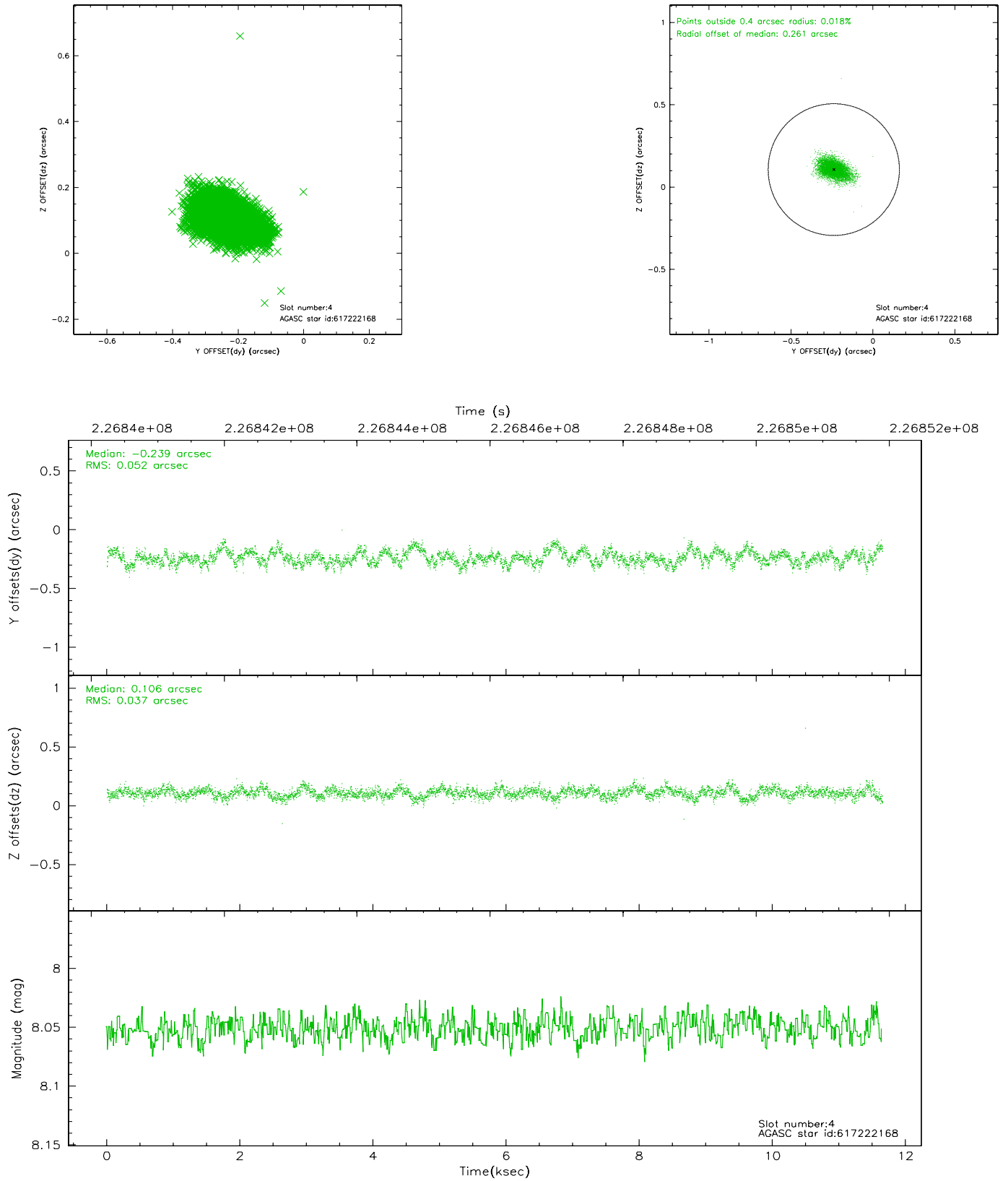
slot	status	id	mag	n_pts	med_dy	med_dz	dr1	dr2	ra	dec	mean_y	mean_z
0	FID	ACIS-S-1	7.19	2843	0.046	-0.061	0.006	0.011	0.000000	0.000000	936.05	-1728.93
1	FID	ACIS-S-5	7.24	2843	-0.032	0.042	0.006	0.010	0.000000	0.000000	-1812.74	168.34
2	FID	ACIS-S-6	7.34	2843	-0.036	0.031	0.007	0.012	0.000000	0.000000	401.11	812.73
3	GUIDE	617087184	9.55	5677	0.238	-0.042	0.121	0.197	49.633097	-1.617509	2252.86	-1282.14
4	GUIDE	617222168	8.05	5685	-0.239	0.106	0.066	0.113	50.285317	-0.369555	-2060.87	1380.10
5	GUIDE	617224968	8.76	5682	-0.138	0.098	0.071	0.118	50.296542	-0.525136	-1499.99	1380.88
6	GUIDE	617228200	9.35	5683	0.073	-0.113	0.087	0.143	50.041217	-1.538419	2073.22	203.42
7	GUIDE	617228520	9.86	5685	0.065	-0.051	0.137	0.249	50.021333	-1.556610	2134.18	127.16

2.4 Star Slots

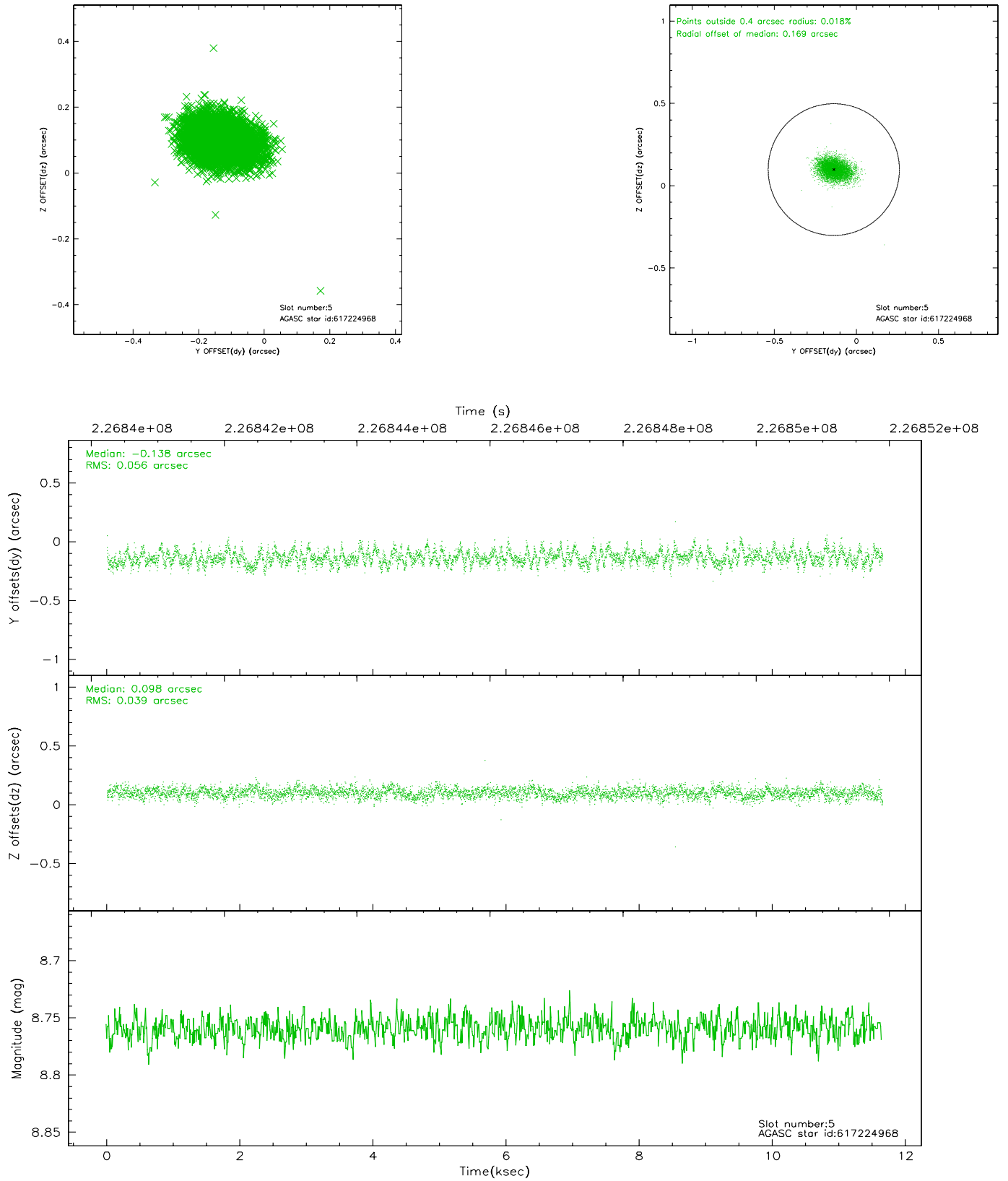
2.4.1 Slot 3



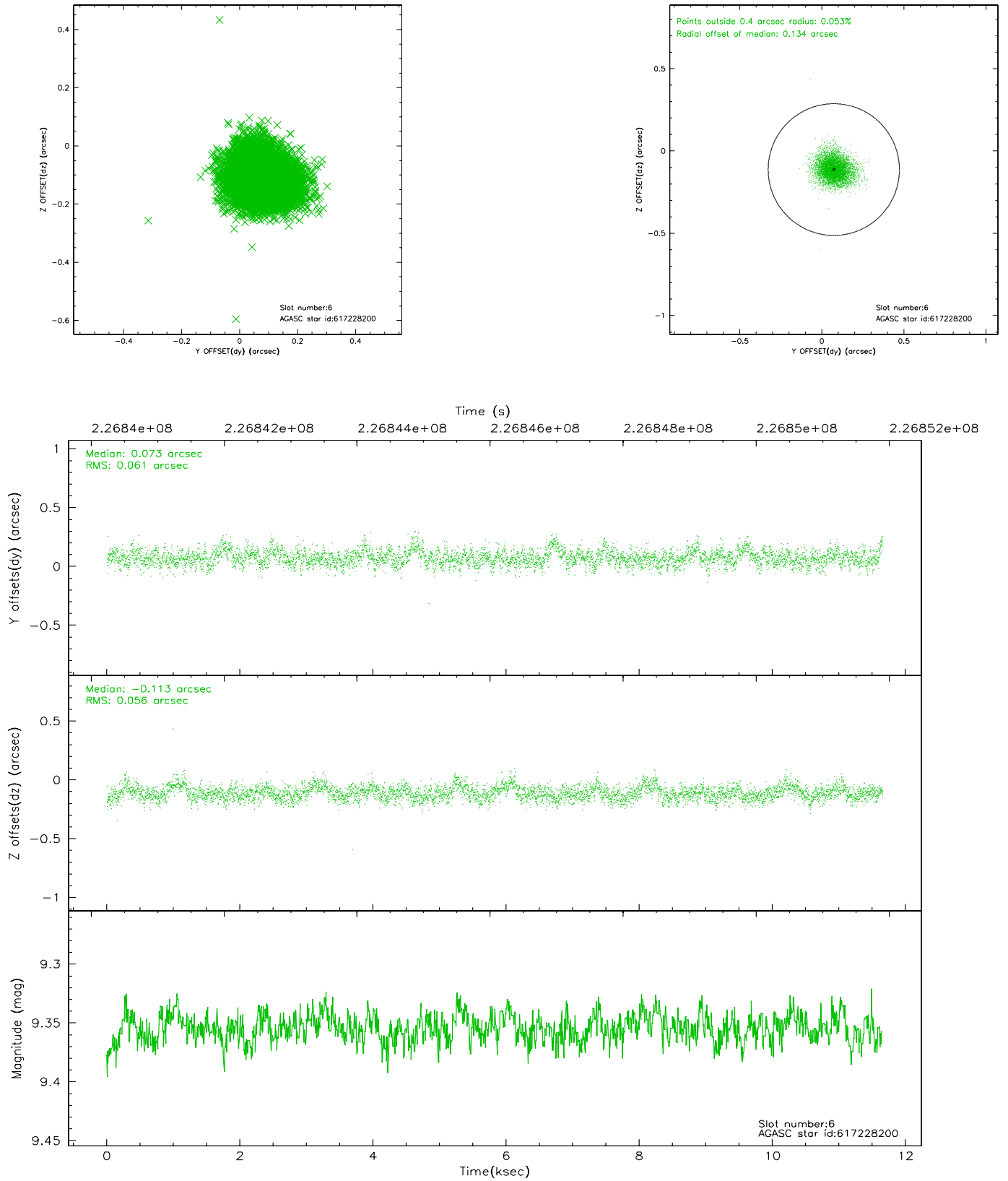
2.4.2 Slot 4



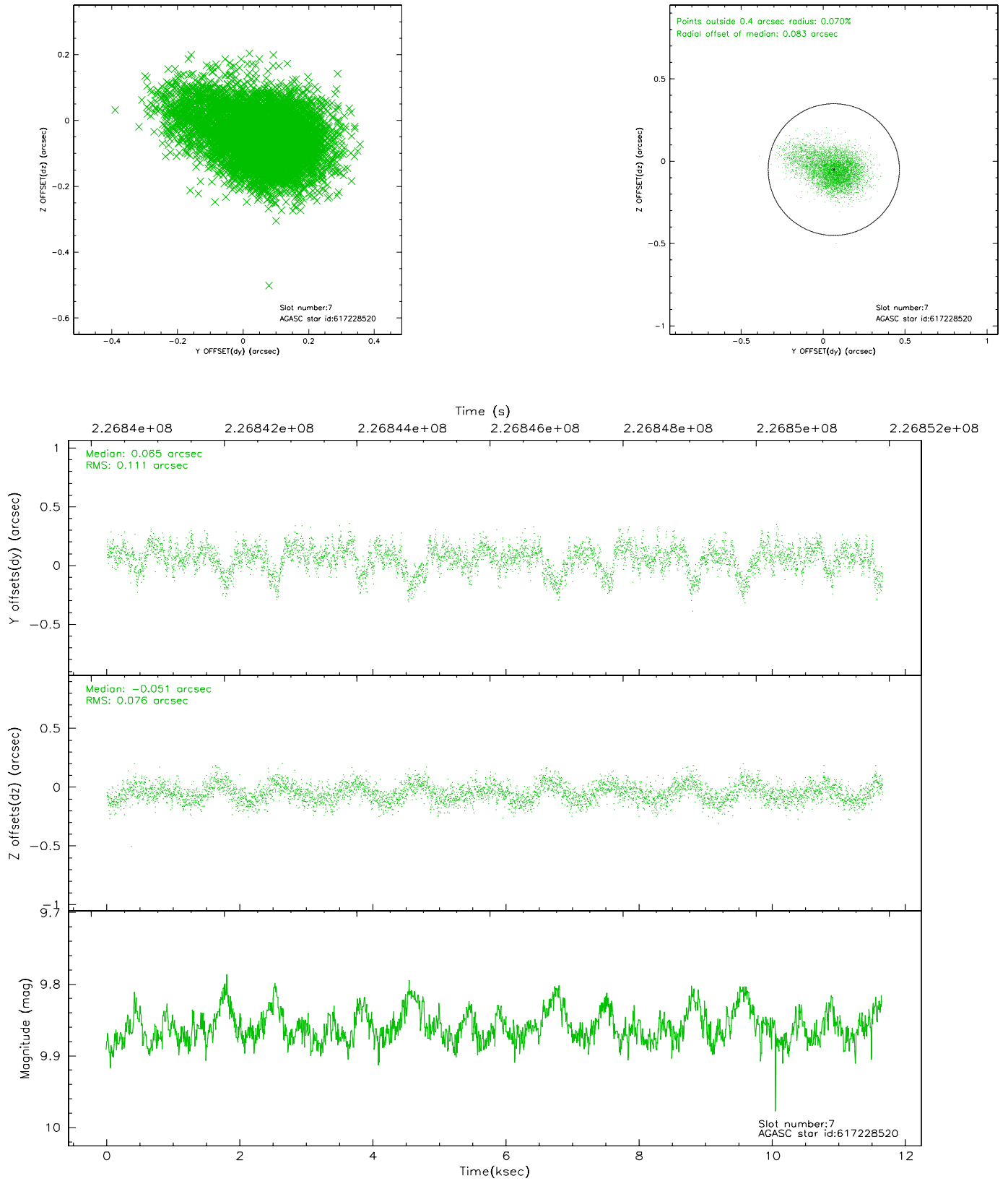
2.4.3 Slot 5



2.4.4 Slot 6

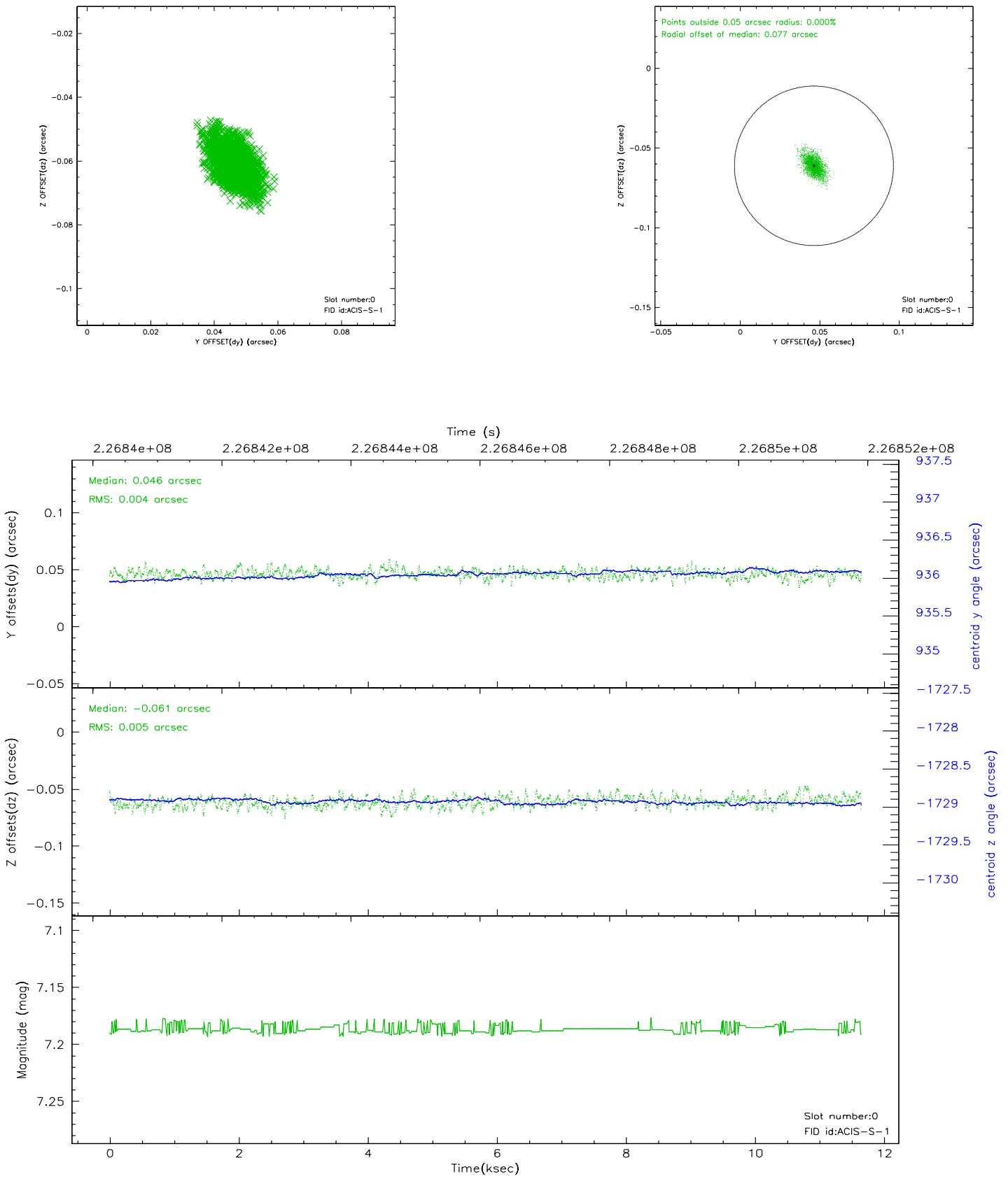


2.4.5 Slot 7

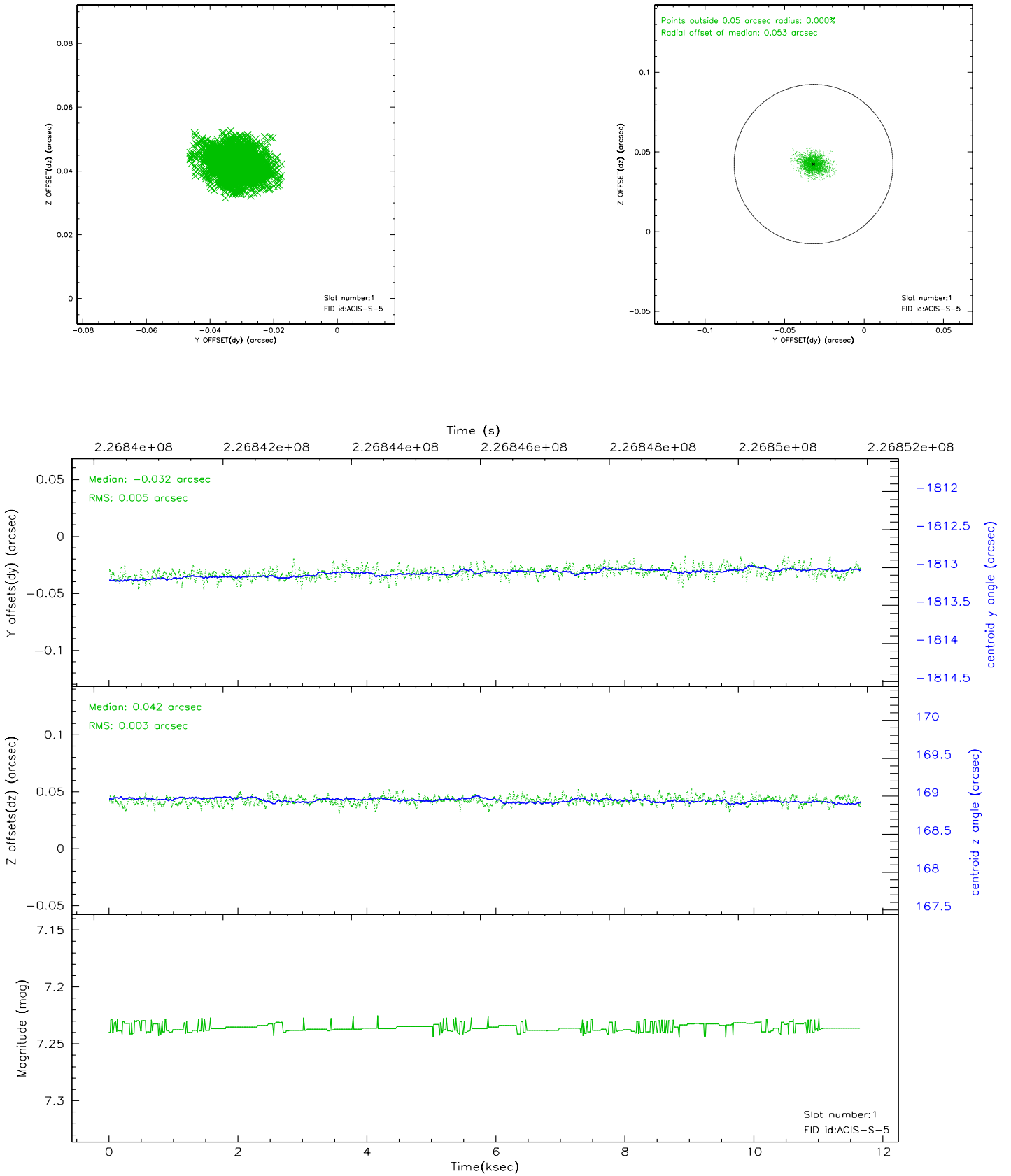


2.5 FID Slots

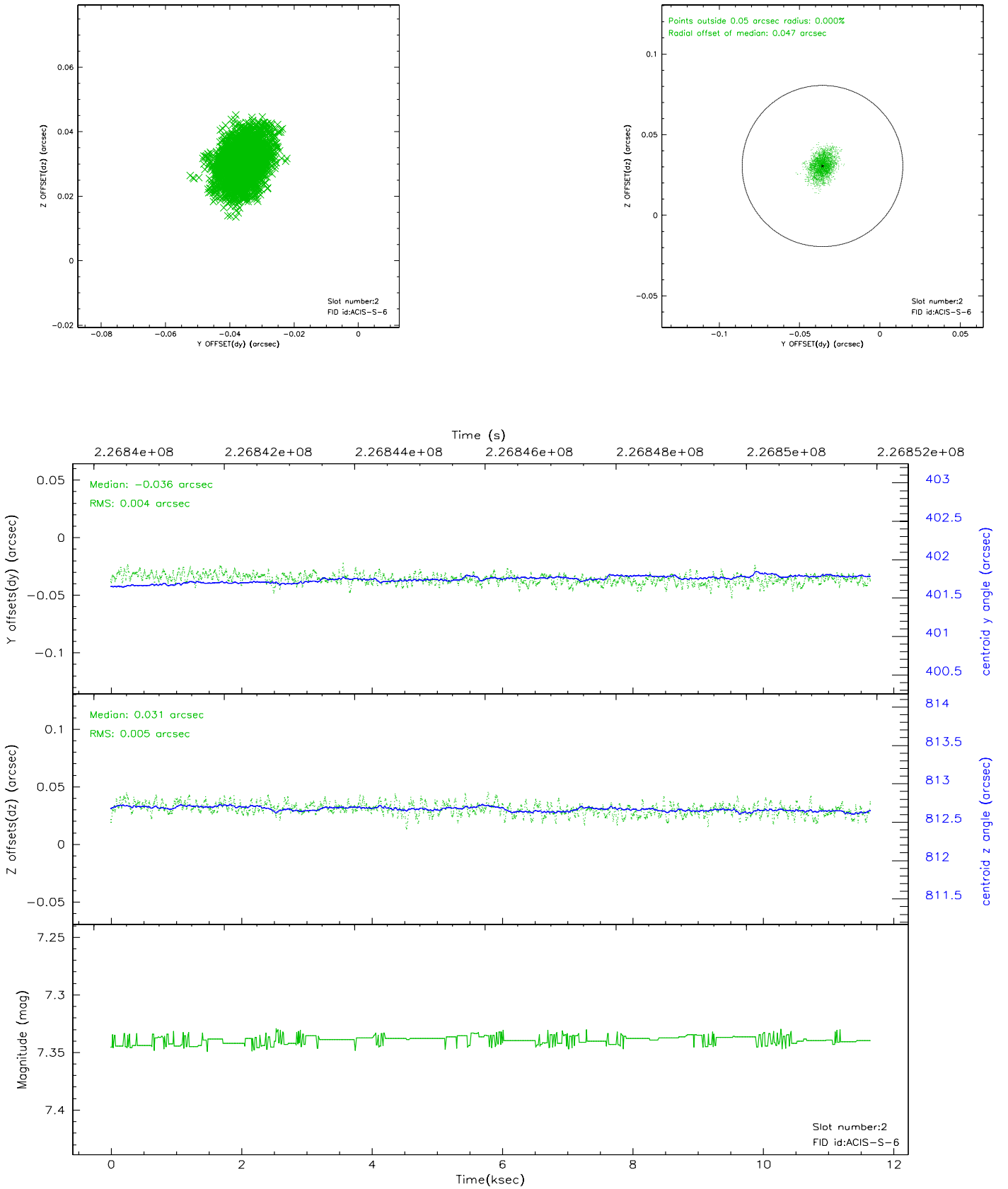
2.5.1 Slot 0



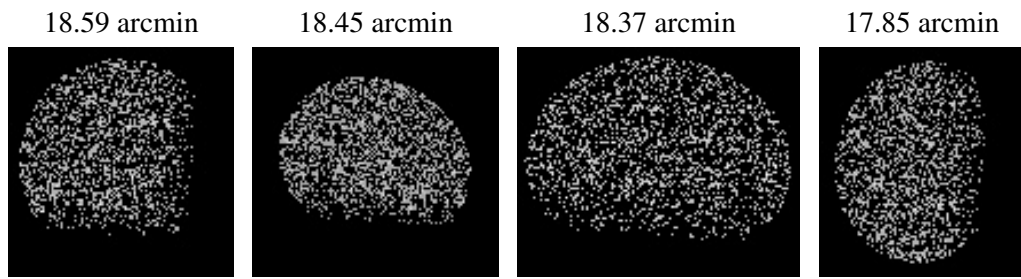
2.5.2 Slot 1



2.5.3 Slot 2



3 Point Sources



A Summary

A.1 Status

V&V Scientist	Beth Sundheim
V&V Date (YYYY-MM-DD)	2006.02.27
V&V Edition	1
V&V Disposition and Status	OK
V&V Charge Time	11.63839

A.2 Comments