

V&V Reference Report

L2 ASCDS Version : 7.6.7.1

Observation 5694 - L2 Version 002
Chandra X-Ray Center

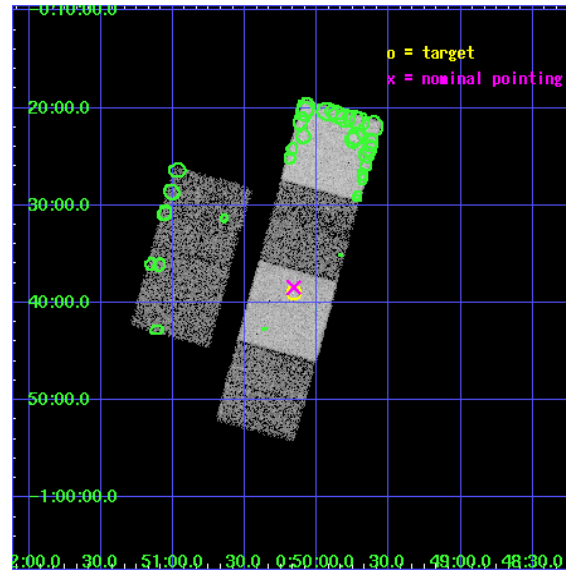
L2 Processing Date : Mar 20 2006

Contents

| | | |
|----------|-------------------------------|-----------|
| 1 | Front | 2 |
| 2 | OBI | 3 |
| 2.1 | OBI | 3 |
| 2.1.1 | Images | 3 |
| 2.1.2 | Bias | 3 |
| 2.1.3 | Parameters | 4 |
| 2.1.4 | Events | 4 |
| 2.2 | Compared Parameters | 5 |
| 2.3 | Aspect | 6 |
| 2.4 | Star Slots | 9 |
| 2.4.1 | Slot 3 | 9 |
| 2.4.2 | Slot 4 | 10 |
| 2.4.3 | Slot 5 | 11 |
| 2.4.4 | Slot 6 | 12 |
| 2.4.5 | Slot 7 | 13 |
| 2.5 | FID Slots | 14 |
| 2.5.1 | Slot 0 | 14 |
| 2.5.2 | Slot 1 | 15 |
| 2.5.3 | Slot 2 | 16 |
| 3 | Point Sources | 17 |
| A | Summary | 18 |
| A.1 | Status | 18 |
| A.2 | Comments | 18 |

1 Front

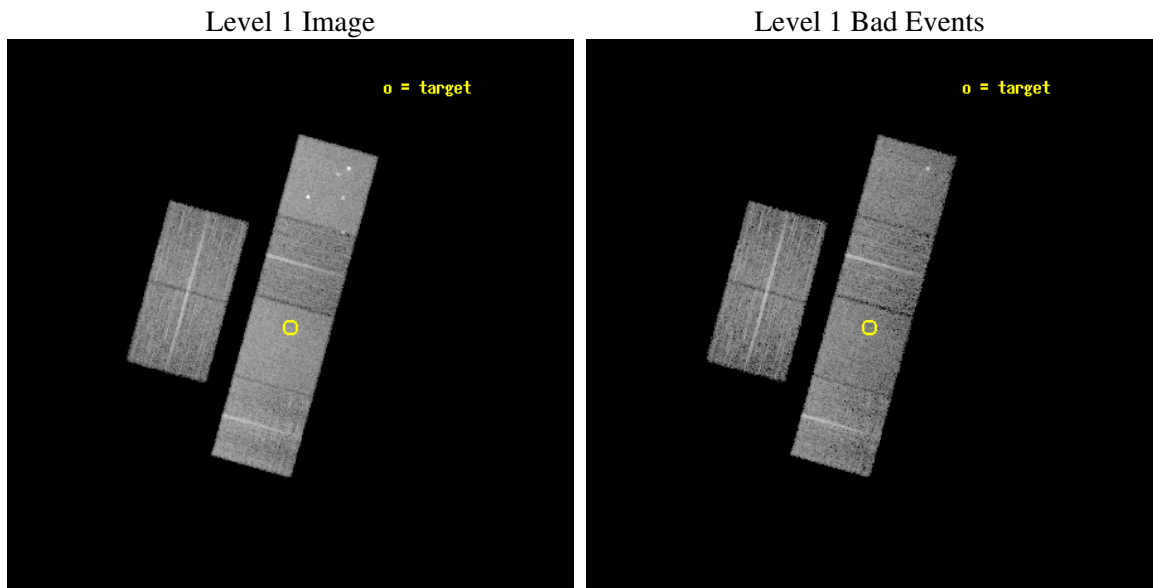
| | |
|----------|---|
| seq_num | 701116 |
| obs_id | 5694 |
| title | Studying the X-ray properties of SDSS candidate Type II quasars with exploratory Chandra observations |
| observer | Dr. Cristian Vignali |
| object | SDSS J005009.81-003900.6 |
| dtcycle | 0 |
| cycle | P |
| ra_targ | 12.540833 |
| dec_targ | -0.650167 |
| ra_nom | 12.539868162067 |
| dec_nom | -0.64061879360797 |
| roll_nom | 105.44658460717 |
| revision | 2 |
| ontime | 7955.1999703646 |
| livetime | 7854.4664382935 |
| ontime2 | 7955.1999703646 |
| ontime3 | 7955.1999703646 |
| ontime5 | 7955.1999703646 |
| ontime6 | 7955.1999703646 |
| ontime7 | 7955.1999703646 |
| ontime8 | 7955.1999703646 |
| l2events | 91726 |



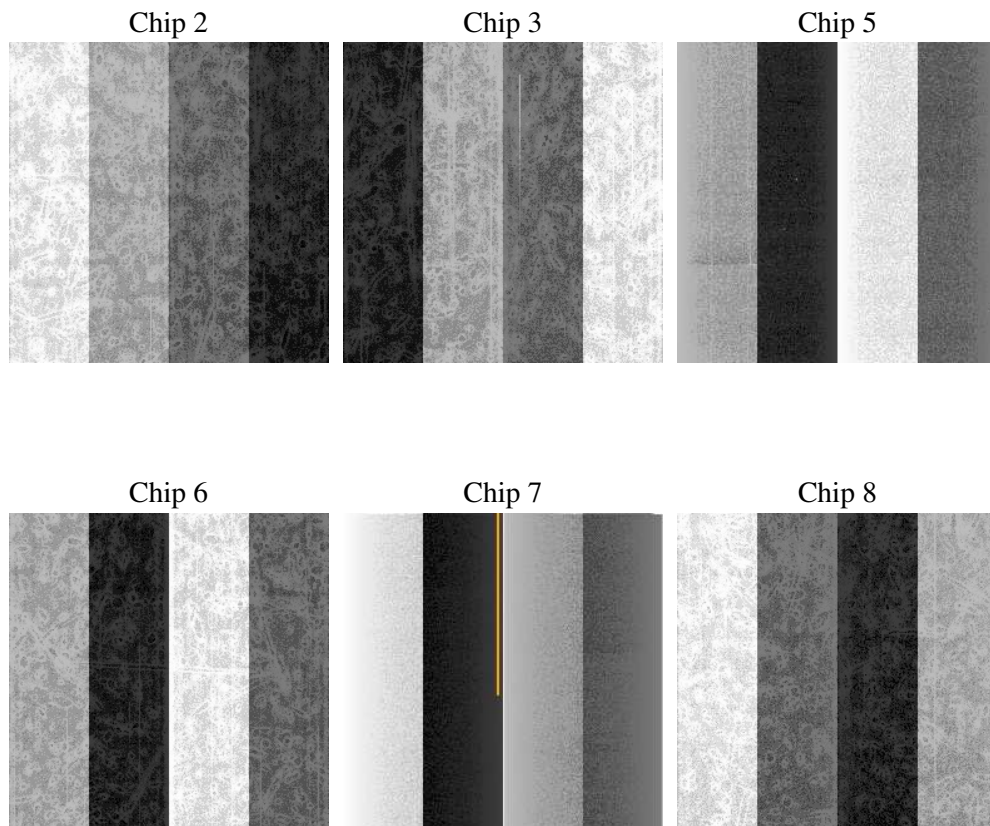
2 OBI

2.1 OBI

2.1.1 Images



2.1.2 Bias



2.1.3 Parameters

| | |
|----------|---------------------|
| obi_num | 0 |
| ascdsver | 7.6.7.1 |
| caldbver | 3.2.1 |
| date | 2006-03-20T17:21:29 |
| revision | 2 |

| | |
|----------------|-----------------|
| sched_exp_time | 8000.000000 |
| ontime | 7959.9292254448 |
| ontime2 | 7959.9292254448 |
| ontime3 | 7959.9292254448 |
| ontime5 | 7959.9292254448 |
| ontime6 | 7959.9292254448 |
| ontime7 | 7959.9292254448 |
| ontime8 | 7959.9292254448 |
| l1events | 423828 |

2.1.4 Events

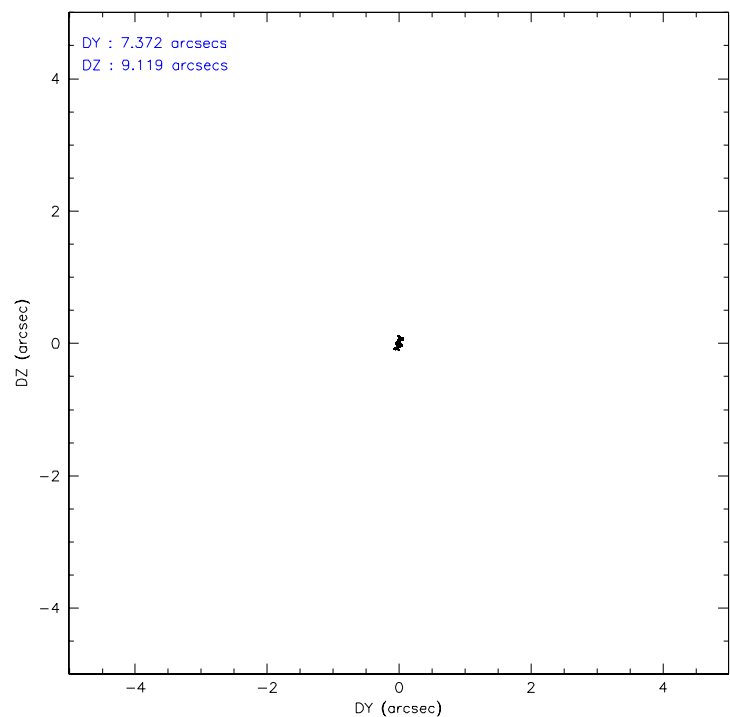
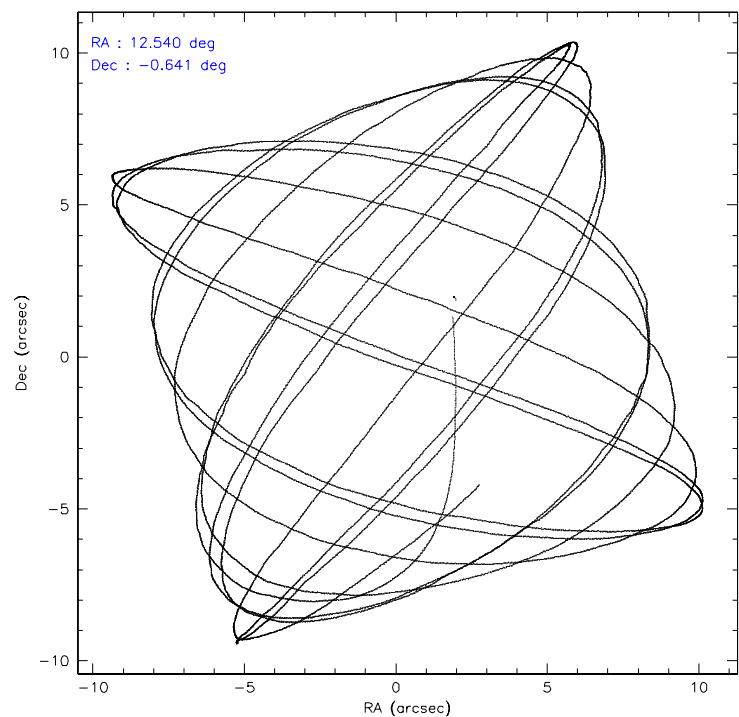
| | ccd 2 | ccd 3 | ccd 5 | ccd 6 | ccd 7 | ccd 8 |
|-----------------|-------|-------|-------|-------|-------|-------|
| level 1 events | 60779 | 57621 | 91074 | 57550 | 80487 | 76317 |
| rejected events | 53542 | 50537 | 50327 | 50286 | 50273 | 59738 |
| rejected % | 88% | 87% | 55% | 87% | 62% | 78% |

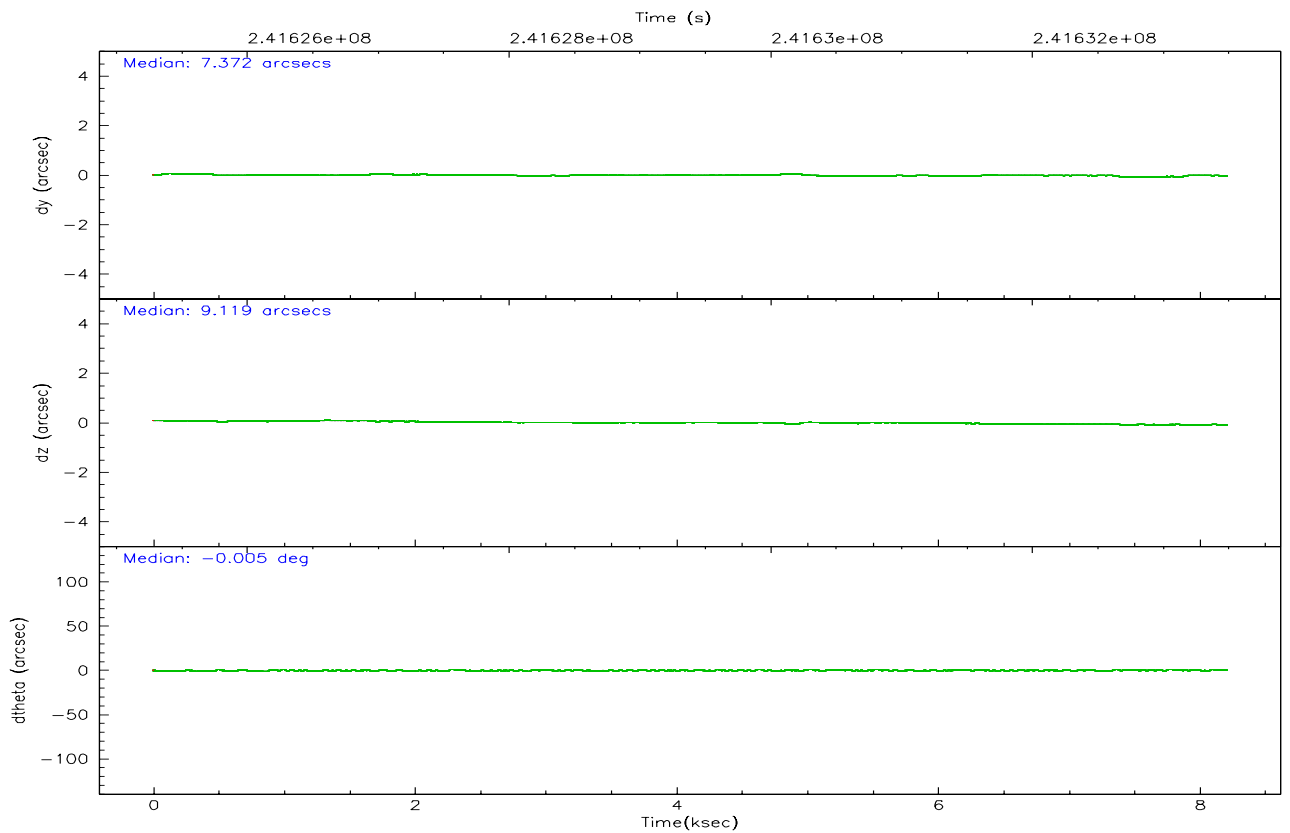
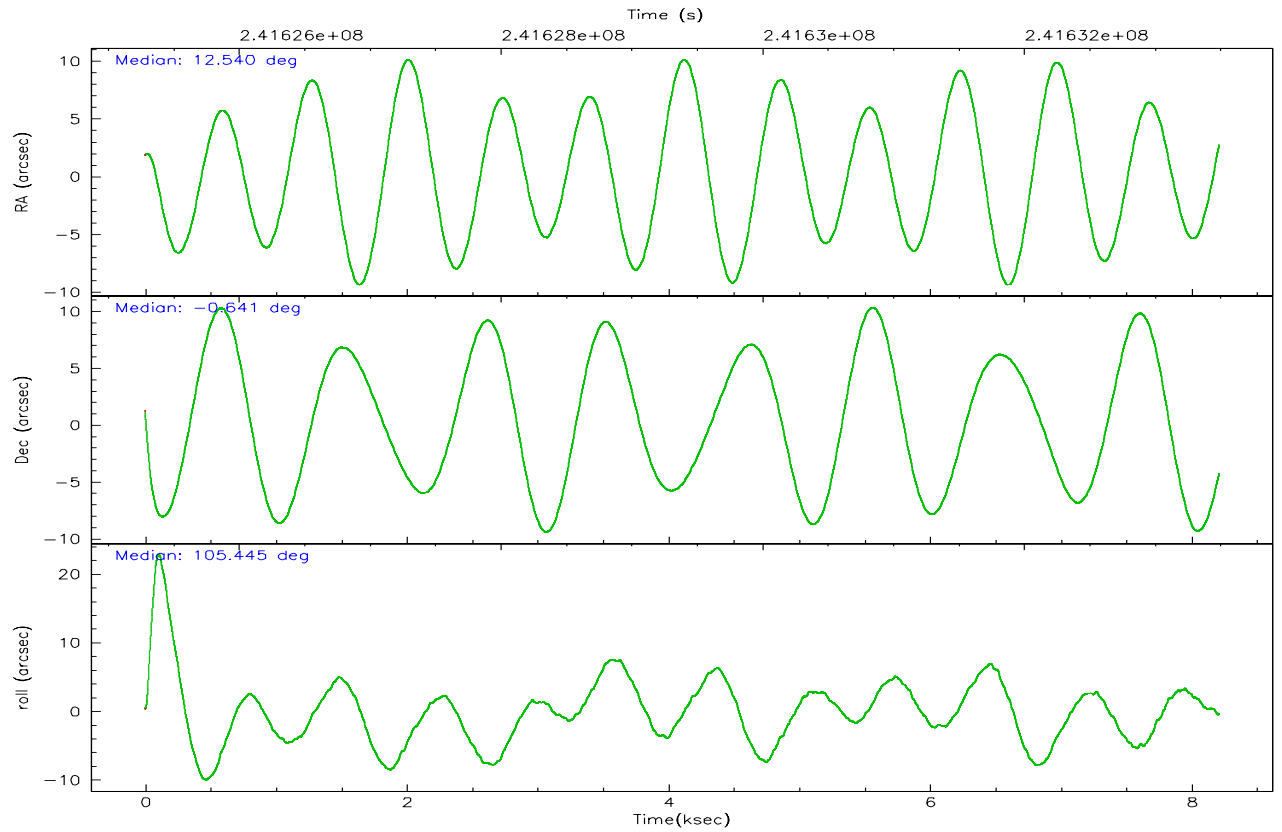
| | ccd 2 | ccd 3 | ccd 5 | ccd 6 | ccd 7 | ccd 8 |
|----------------|-------|-------|-------|-------|-------|-------|
| grade 0 events | 3103 | 3082 | 4319 | 2853 | 1593 | 5165 |
| | 5% | 5% | 4% | 4% | 1% | 6% |
| grade 1 events | 33 | 42 | 91 | 25 | 48 | 67 |
| | 0% | 0% | 0% | 0% | 0% | 0% |
| grade 2 events | 1534 | 1324 | 12558 | 1571 | 7630 | 3636 |
| | 2% | 2% | 13% | 2% | 9% | 4% |
| grade 3 events | 660 | 720 | 796 | 703 | 1446 | 1861 |
| | 1% | 1% | 0% | 1% | 1% | 2% |
| grade 4 events | 708 | 690 | 815 | 699 | 1279 | 1698 |
| | 1% | 1% | 0% | 1% | 1% | 2% |
| grade 5 events | 2373 | 2745 | 4476 | 2805 | 5149 | 3622 |
| | 3% | 4% | 4% | 4% | 6% | 4% |
| grade 6 events | 1234 | 1270 | 22270 | 1442 | 18281 | 4221 |
| | 2% | 2% | 24% | 2% | 22% | 5% |
| grade 7 events | 51134 | 47748 | 45749 | 47452 | 45061 | 56047 |
| | 84% | 82% | 50% | 82% | 55% | 73% |

2.2 Compared Parameters

| Parameter | Planned | Actual | Parameter | Planned | Actual |
|-----------------------------------|---------------------|----------------------|---------------------------------|-----------|---------|
| Instrument | ACIS | ACIS | Obspar format version number | 6 | 6 |
| Detector | ACIS-235678 | ACIS-235678 | Obspar file type | PREDICTED | ACTUAL |
| Grating | NONE | NONE | Obspar update status | NONE | UPDATED |
| Data mode | FAINT | FAINT | On-chip summing requested | N | N |
| Observation mode | POINTING | POINTING | Subarray requested | NONE | NONE |
| Pointing RA | 12.559593 | 12.53986816206711 | Alternating exposures requested | N | N |
| Pointing Dec | -0.659376 | -0.6406187936079741 | Primary exposure time | 0.000000 | 3.2 |
| Pointing Roll | 105.290216 | 105.4465846071709 | | | |
| SIM focus pos (mm) | -0.684267 | -0.6828225247311905 | | | |
| SIM defocus (mm) | 0 | 0.001444936568705701 | | | |
| SIM translation stage pos (mm) | -190.132523 | -190.145094680475 | | | |
| SIM translation stage offset (mm) | 0 | 0.01257209746719923 | | | |
| Observation start time | 241625486.184000 | 241624511.01629 | | | |
| Observation start date | 2005-08-28T14:10:22 | 2005-08-28T13:55:11 | | | |
| Observation end time | 241633486.184000 | 241634584.71675 | | | |
| Observation end date | 2005-08-28T16:23:42 | 2005-08-28T16:43:04 | | | |
| Read mode | TIMED | TIMED | | | |

2.3 Aspect



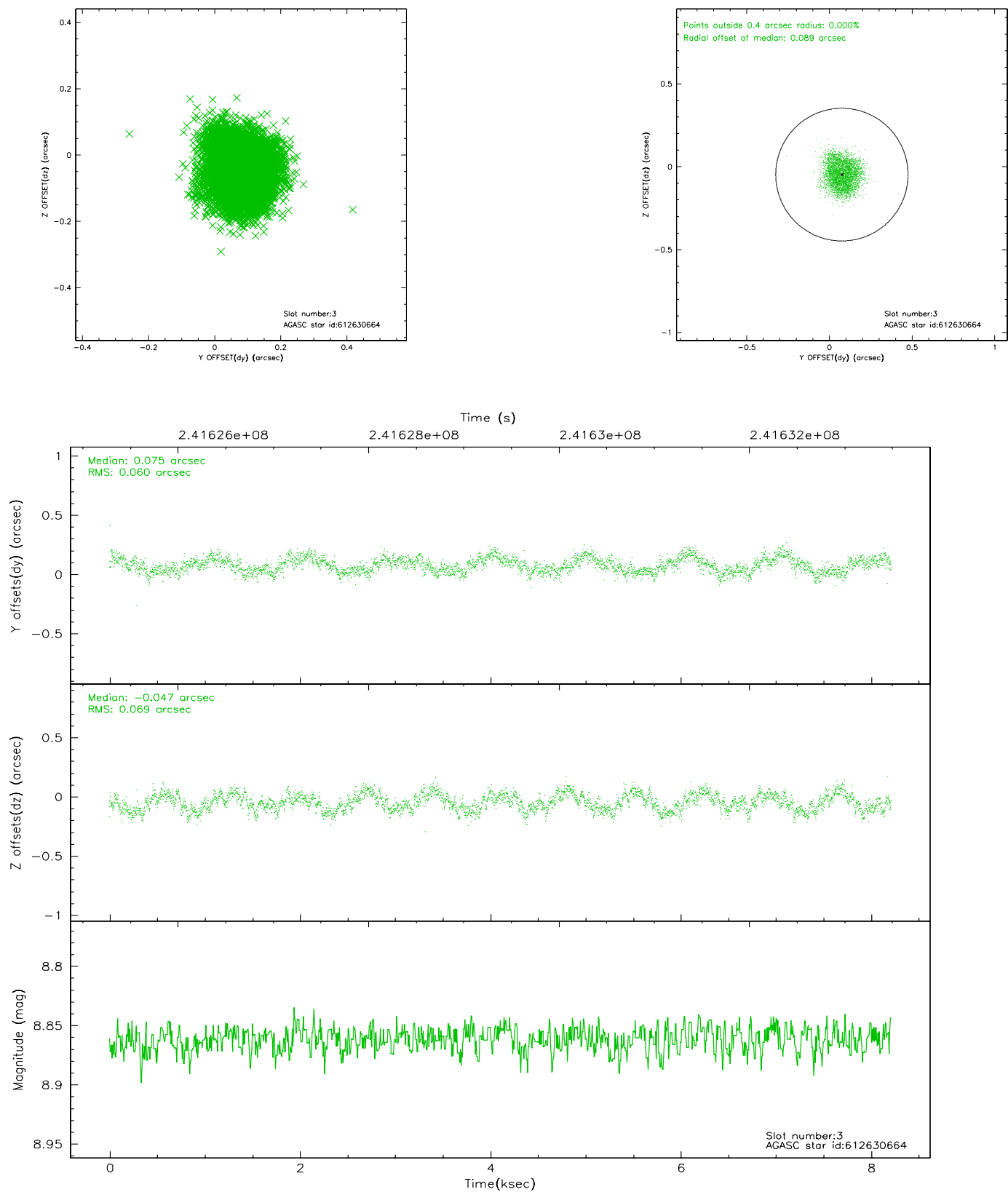


Slot Statistics

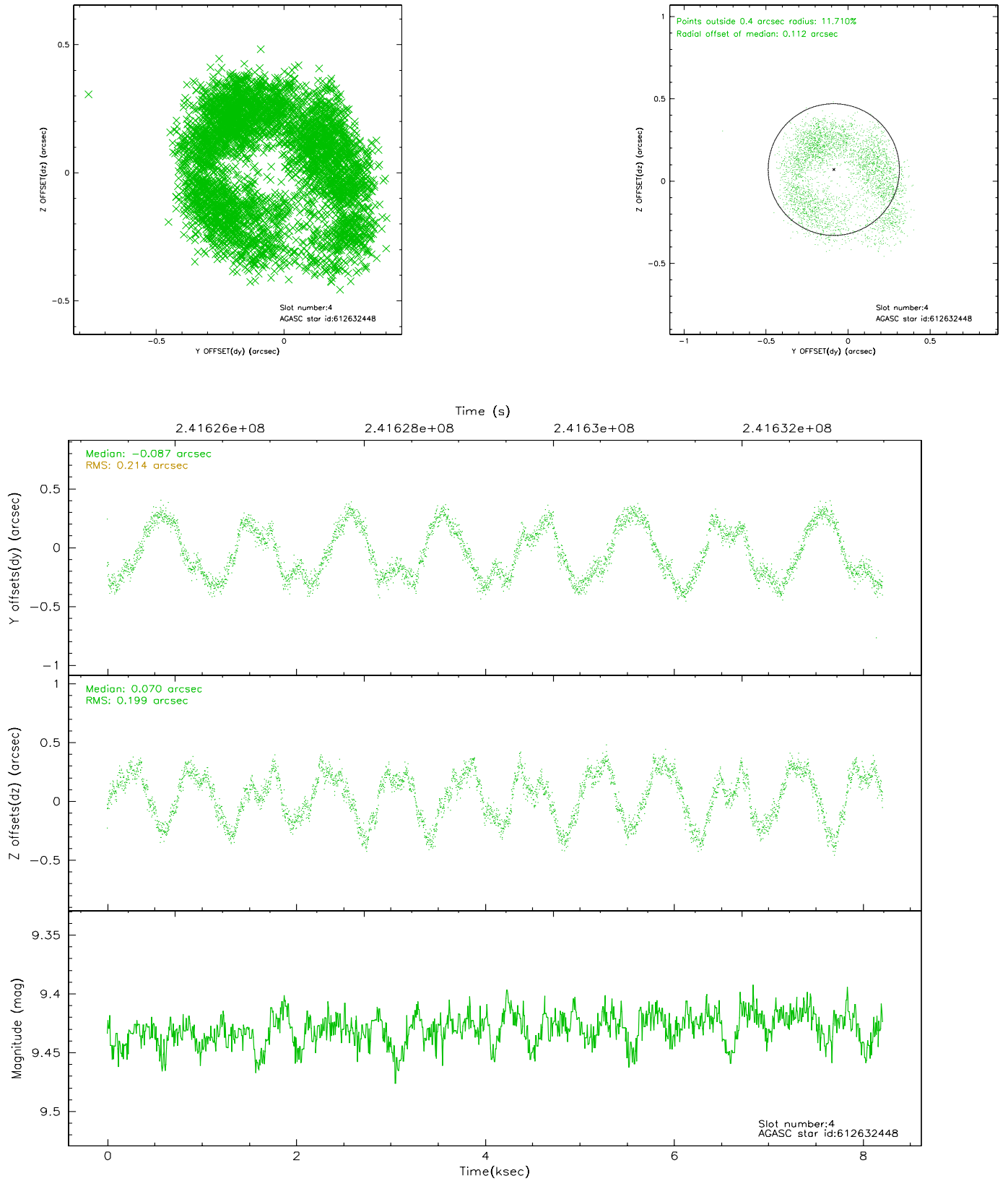
| slot | status | id | mag | n_pts | med_dy | med_dz | dr1 | dr2 | ra | dec | mean_y | mean_z |
|------|--------|-----------|------|-------|--------|--------|-------|-------|-----------|-----------|----------|----------|
| 0 | FID | ACIS-S-2 | 7.10 | 2004 | -0.017 | -0.012 | 0.007 | 0.011 | 0.000000 | 0.000000 | -760.13 | -1730.26 |
| 1 | FID | ACIS-S-4 | 7.21 | 2004 | 0.037 | 0.011 | 0.005 | 0.011 | 0.000000 | 0.000000 | 2152.87 | 177.57 |
| 2 | FID | ACIS-S-5 | 7.23 | 2004 | -0.052 | 0.010 | 0.007 | 0.011 | 0.000000 | 0.000000 | -1812.15 | 171.98 |
| 3 | GUIDE | 612630664 | 8.86 | 4004 | 0.075 | -0.047 | 0.100 | 0.146 | 12.819163 | -0.535703 | 183.67 | -1018.86 |
| 4 | GUIDE | 612632448 | 9.43 | 4005 | -0.087 | 0.070 | 0.312 | 0.457 | 12.770487 | -1.004330 | -1397.48 | -405.08 |
| 5 | GUIDE | 612632872 | 8.66 | 4005 | -0.034 | 0.017 | 0.089 | 0.139 | 12.666370 | -0.080556 | 1908.18 | -919.94 |
| 6 | GUIDE | 612633056 | 9.39 | 4003 | -0.034 | 0.060 | 0.138 | 0.206 | 13.071720 | -0.364507 | 538.65 | -2058.62 |
| 7 | GUIDE | 612633288 | 8.51 | 4003 | 0.054 | -0.075 | 0.100 | 0.149 | 12.908194 | -0.488403 | 263.35 | -1373.19 |

2.4 Star Slots

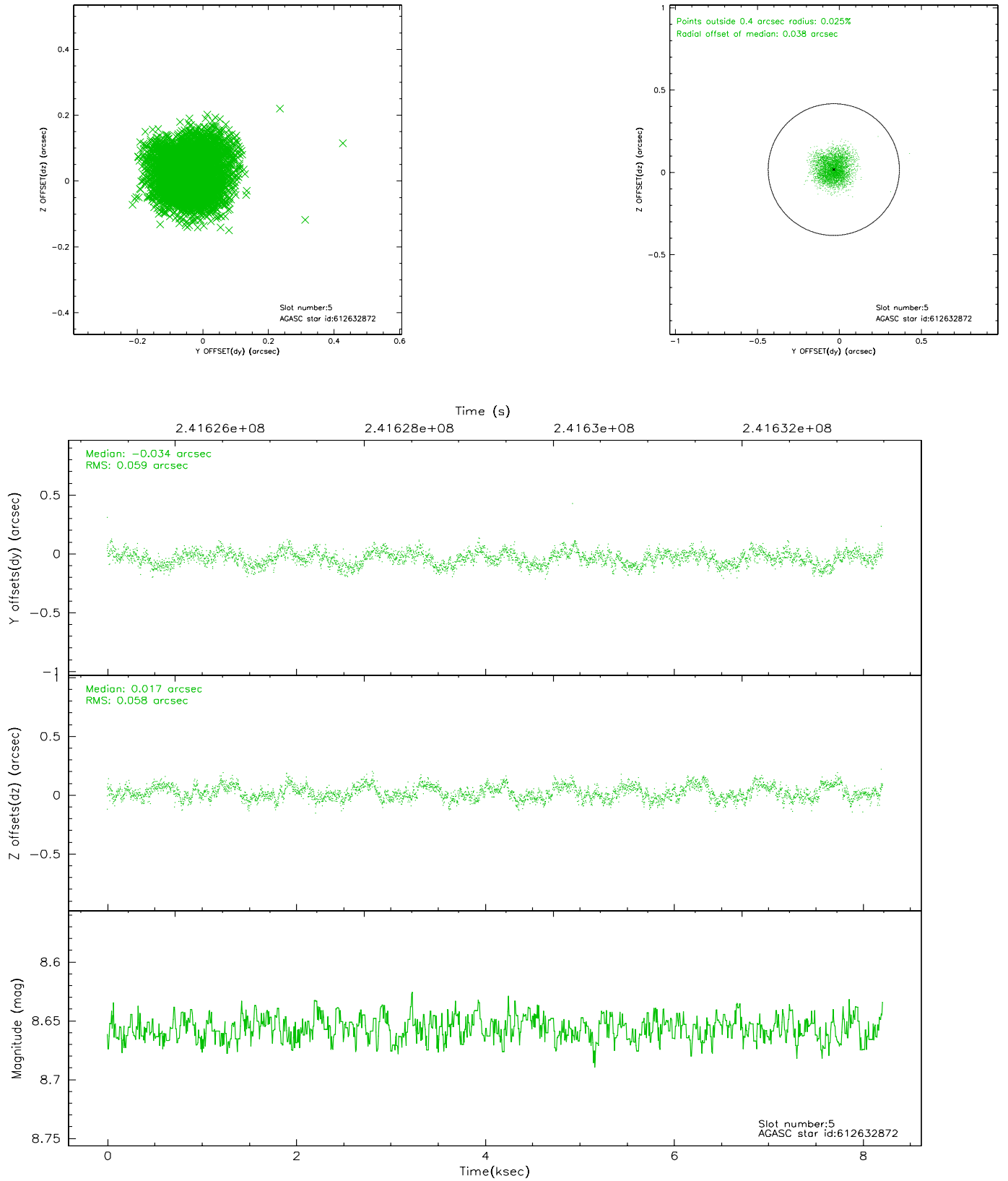
2.4.1 Slot 3



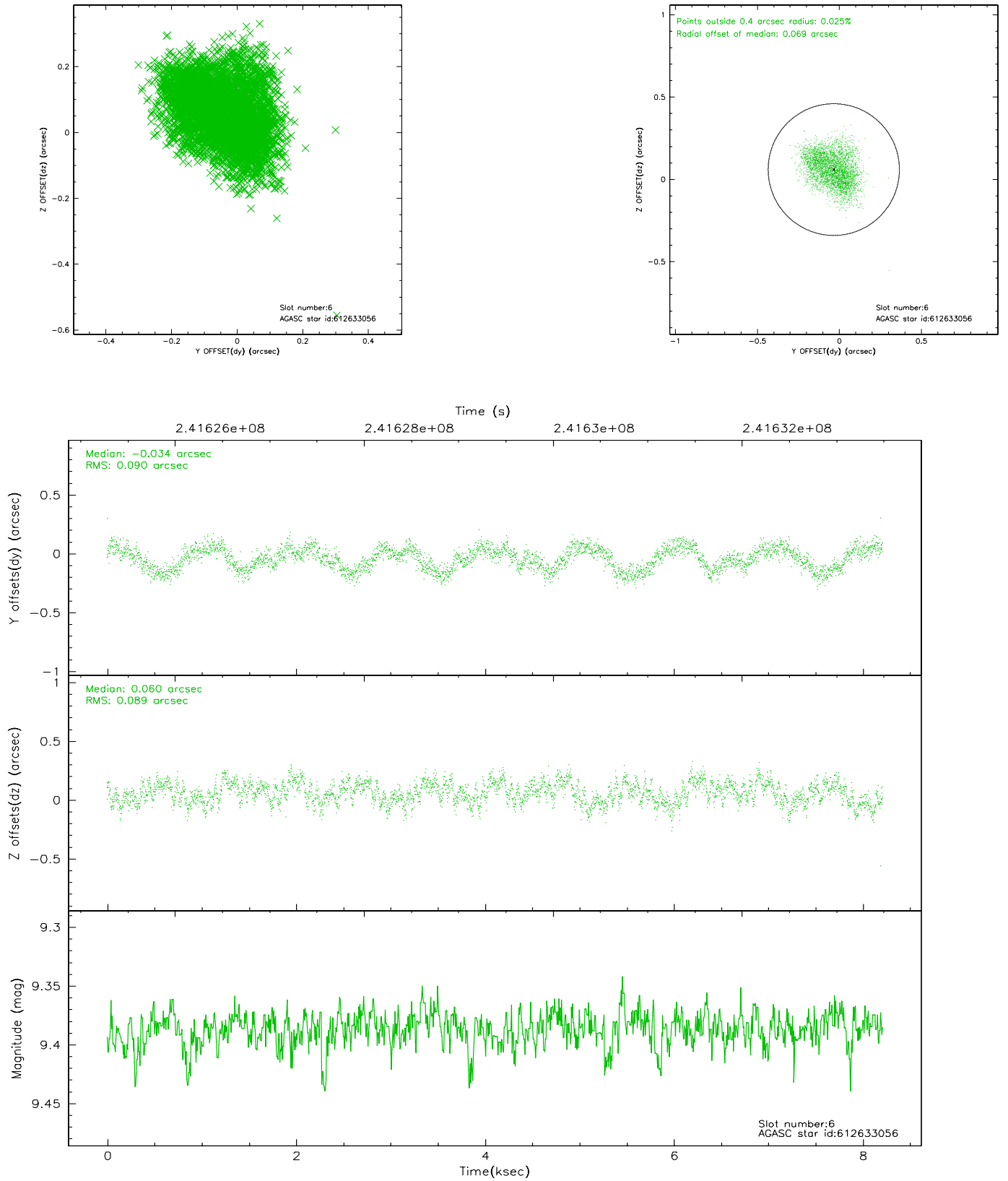
2.4.2 Slot 4



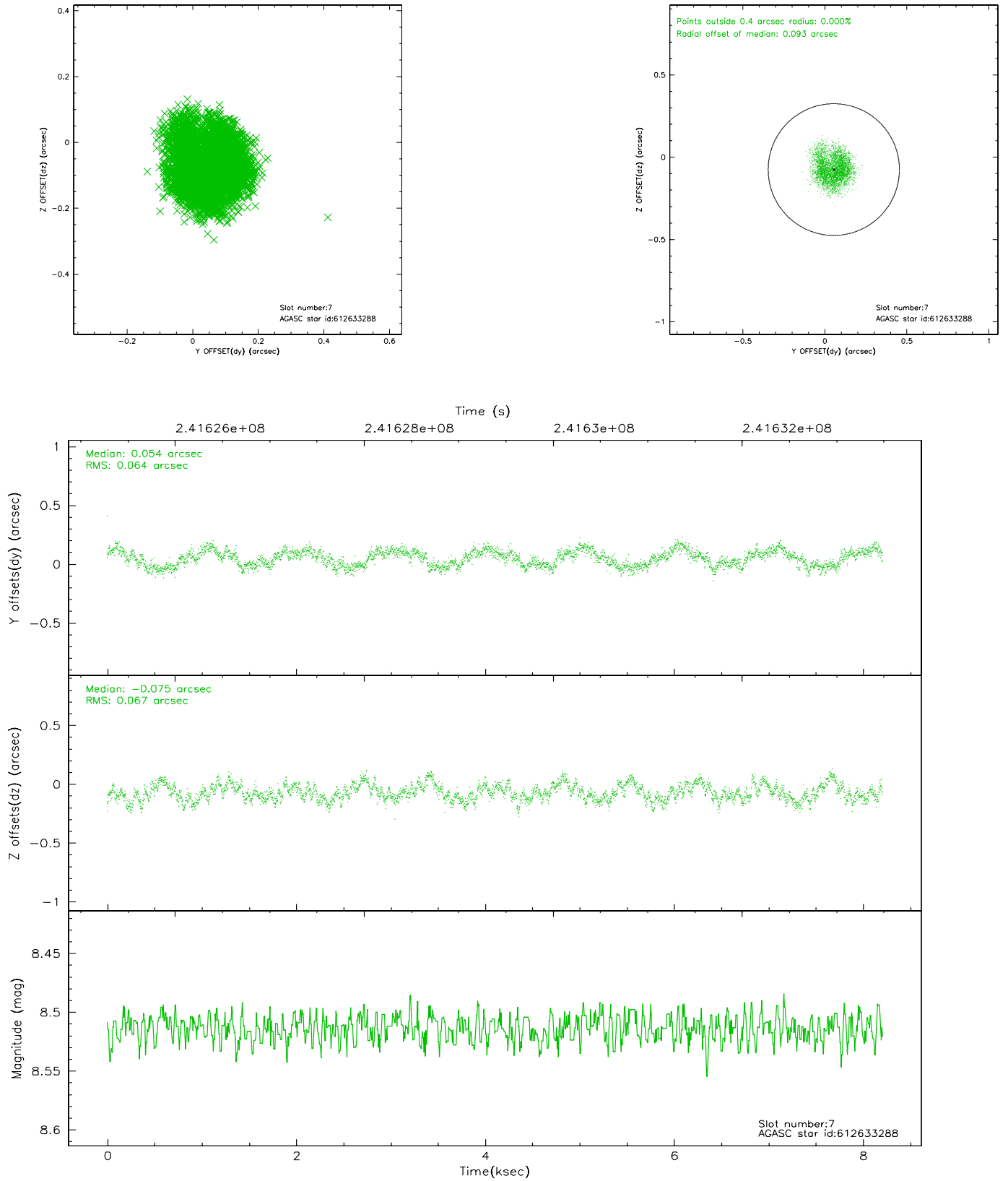
2.4.3 Slot 5



2.4.4 Slot 6

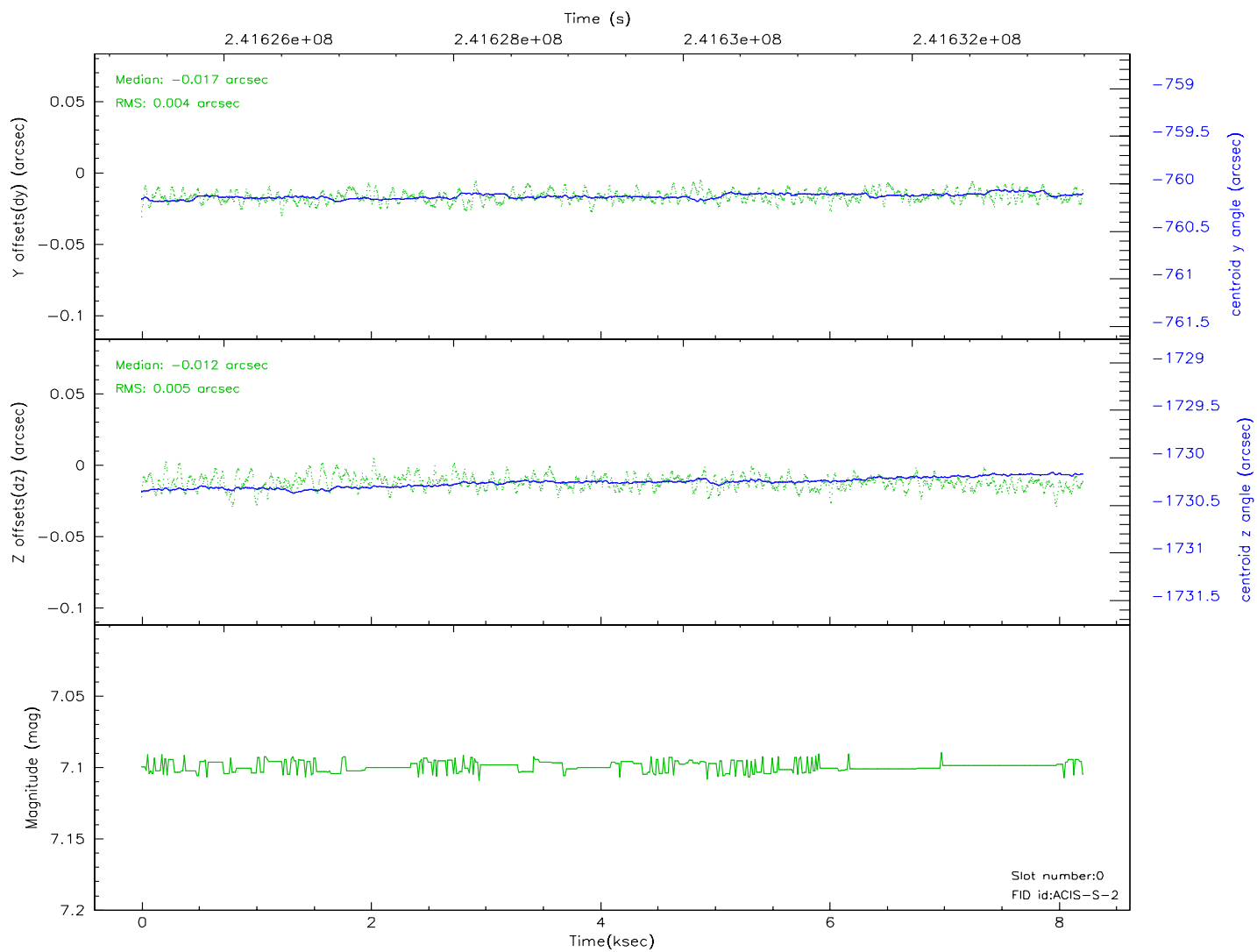
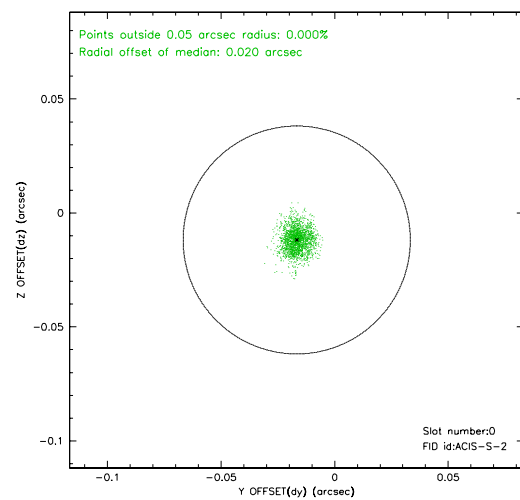
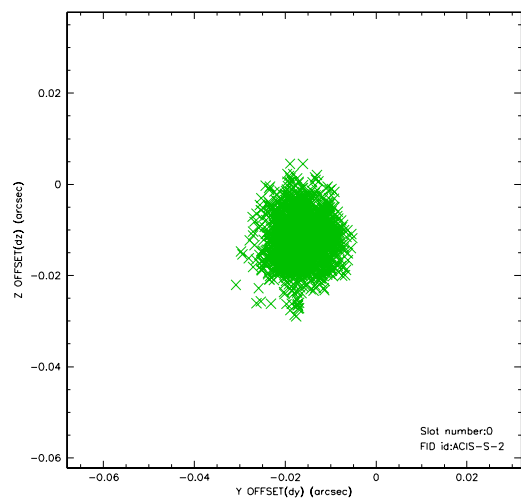


2.4.5 Slot 7

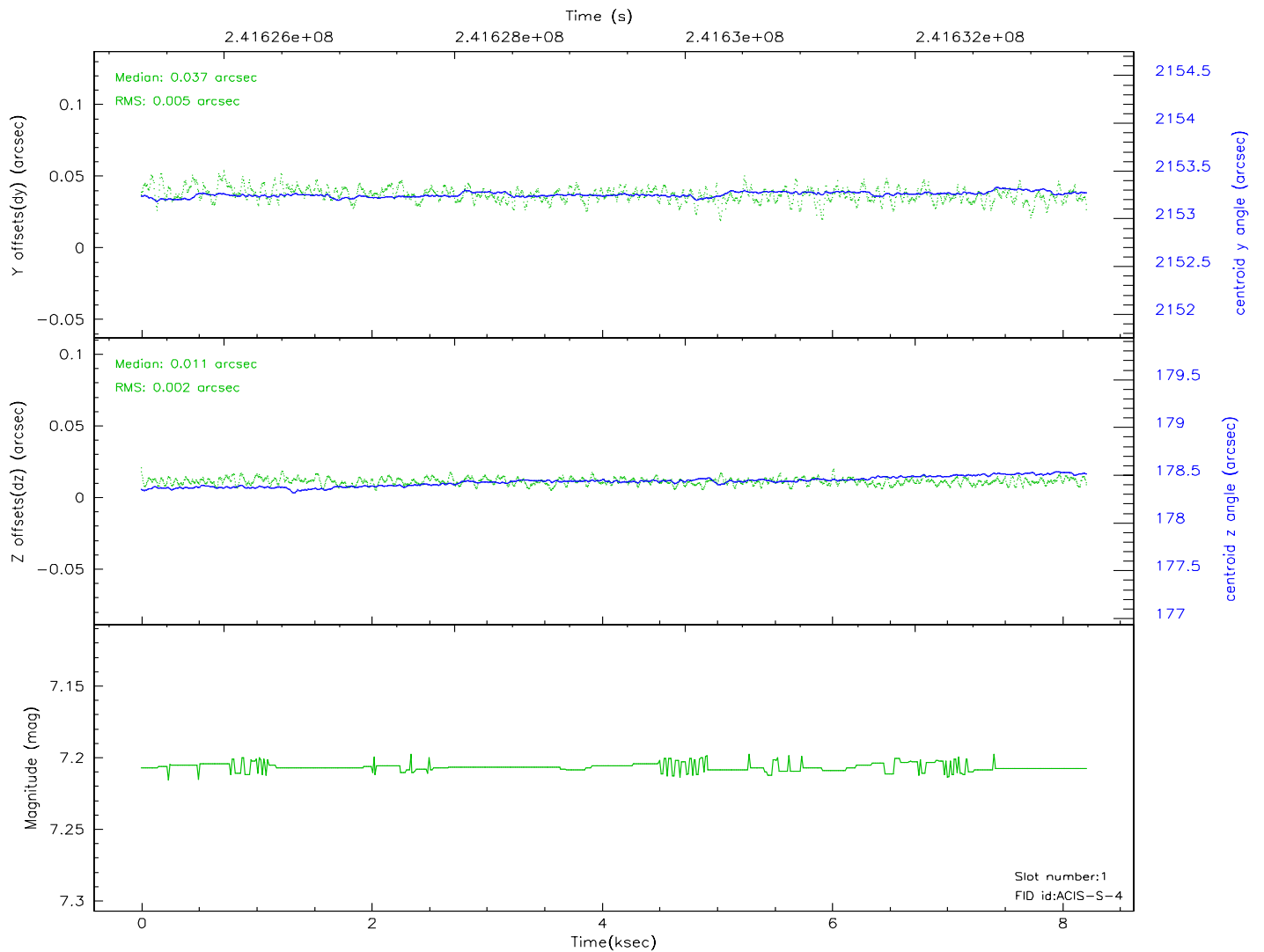
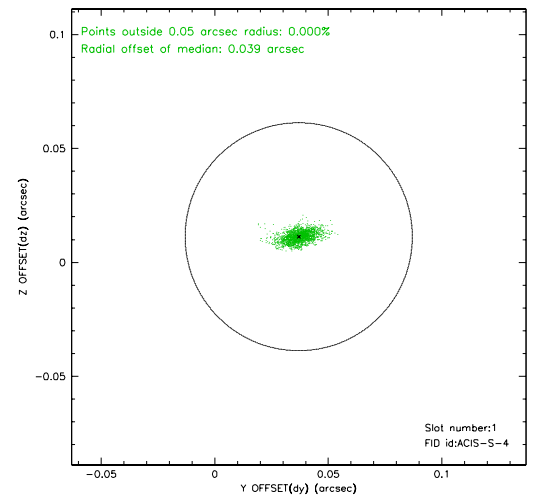
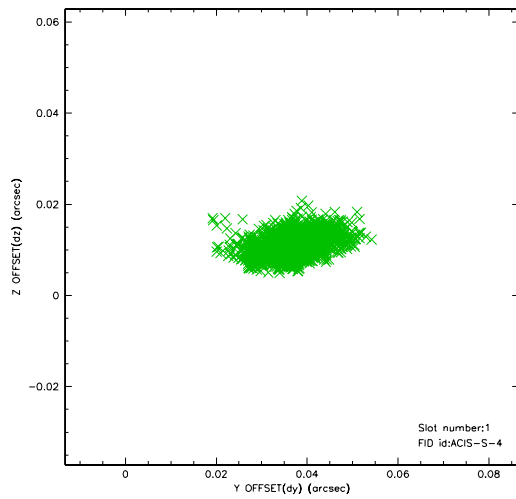


2.5 FID Slots

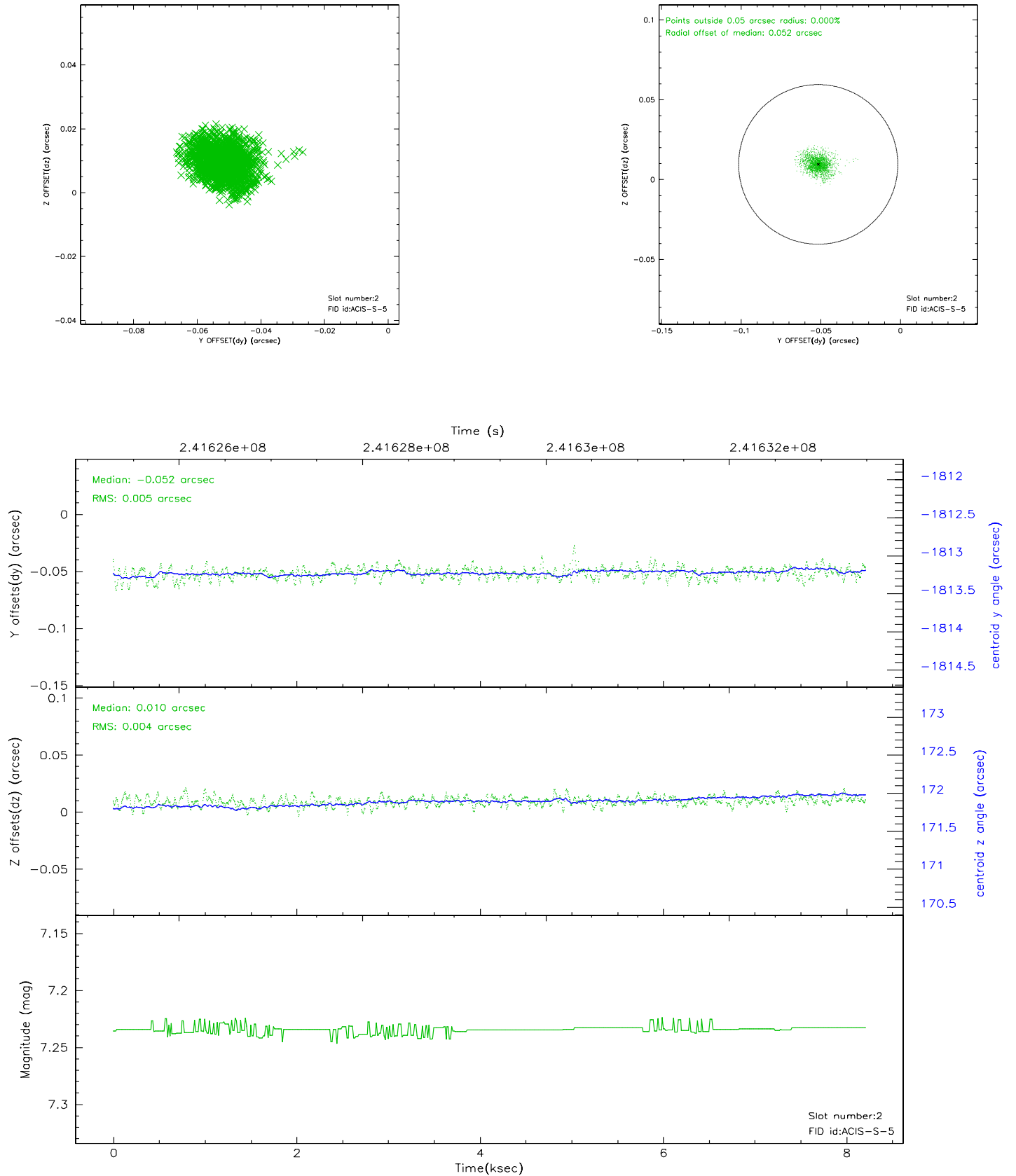
2.5.1 Slot 0



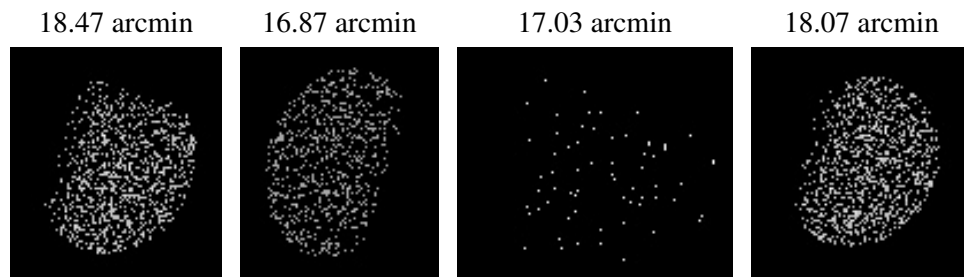
2.5.2 Slot 1



2.5.3 Slot 2



3 Point Sources



A Summary

A.1 Status

| | |
|----------------------------|------------|
| V&V Scientist | Jen Lauer |
| V&V Date (YYYY-MM-DD) | 2006.03.20 |
| V&V Edition | 1 |
| V&V Disposition and Status | OK |
| V&V Charge Time | 7.955199 |

A.2 Comments

Comments for Obi 0

Star in slot 4 has an RMS deviation > 0.200000 arcsec

Aspect solution within spec.