

# V&V Reference Report

## L2 ASCDS Version : 7.6.7.1

Observation 5686 - L2 Version 002  
Chandra X-Ray Center

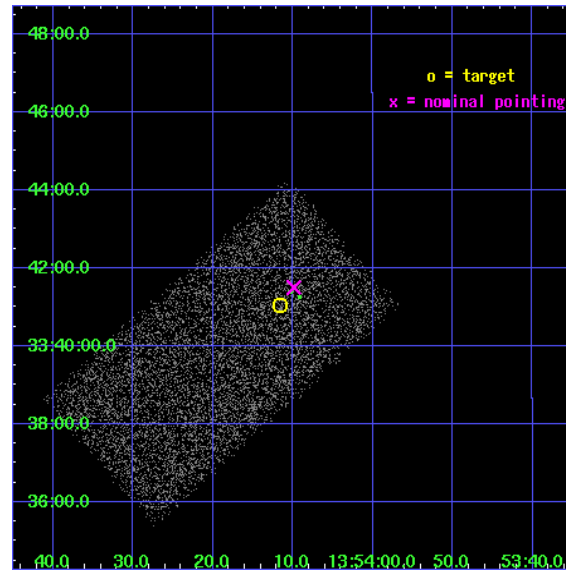
L2 Processing Date : Mar 17 2006

## Contents

<b>1</b>	<b>Front</b>	<b>2</b>
<b>2</b>	<b>OBI</b>	<b>3</b>
2.1	OBI . . . . .	3
2.1.1	Images . . . . .	3
2.1.2	Bias . . . . .	3
2.1.3	Parameters . . . . .	4
2.1.4	Events . . . . .	4
2.2	Compared Parameters . . . . .	5
2.3	Aspect . . . . .	6
2.4	Star Slots . . . . .	9
2.4.1	Slot 3 . . . . .	9
2.4.2	Slot 4 . . . . .	10
2.4.3	Slot 5 . . . . .	11
2.4.4	Slot 6 . . . . .	12
2.4.5	Slot 7 . . . . .	13
2.5	FID Slots . . . . .	14
2.5.1	Slot 0 . . . . .	14
2.5.2	Slot 1 . . . . .	15
2.5.3	Slot 2 . . . . .	16
<b>3</b>	<b>Point Sources</b>	<b>17</b>
<b>A</b>	<b>Summary</b>	<b>18</b>
A.1	Status . . . . .	18
A.2	Comments . . . . .	18

# 1 Front

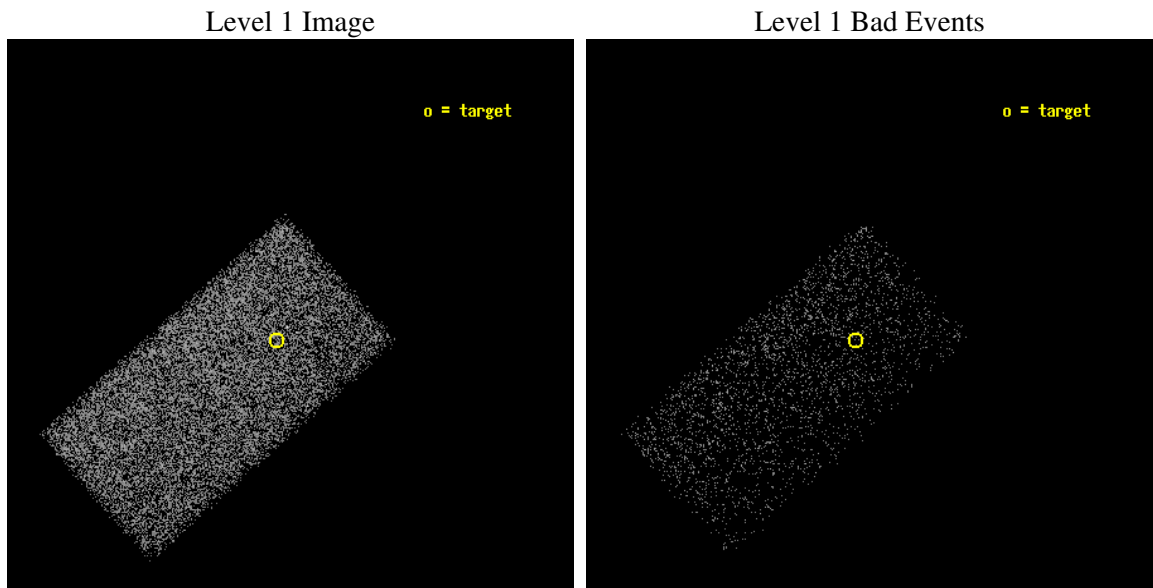
seq_num	701109
obs_id	5686
title	Bringing in the Last SHEEP
observer	Dr Kirpal Nandra
object	AX J1354.1+3341
dtcycle	0
cycle	P
ra_targ	208.548333
dec_targ	33.684167
ra_nom	208.54118232597
dec_nom	33.691749388431
roll_nom	138.40396546095
revision	2
ontime	5178.0
livetime	5040.1027877278
ontime7	5178.0
l2events	10261



## 2 OBI

### 2.1 OBI

#### 2.1.1 Images



#### 2.1.2 Bias

Chip 7



### 2.1.3 Parameters

obi_num	0
ascdsver	7.6.7.1
caldbver	3.2.1
date	2006-03-17T12:04:41
revision	2

sched_exp_time	5000.000000
ontime	5265.6820791066
ontime7	5265.6820791066
l1events	27107

### 2.1.4 Events

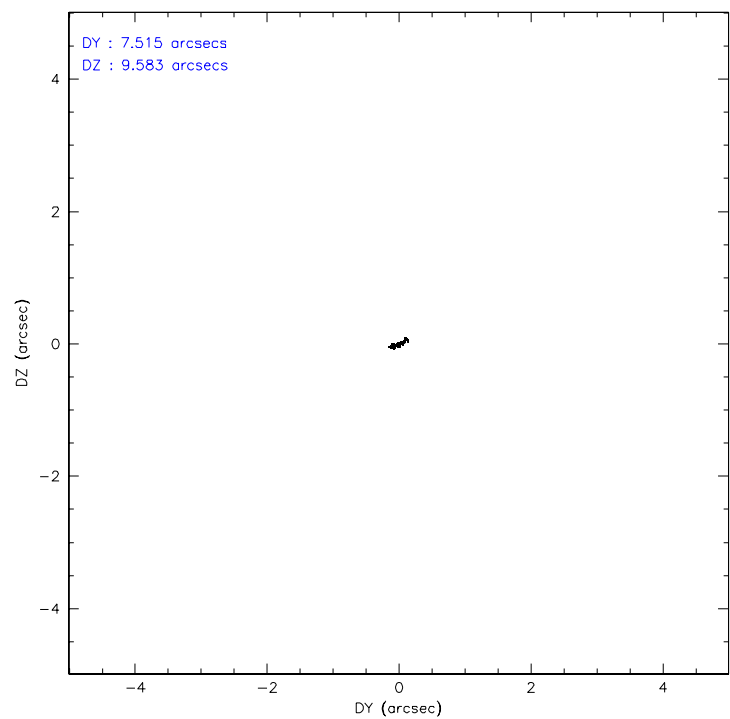
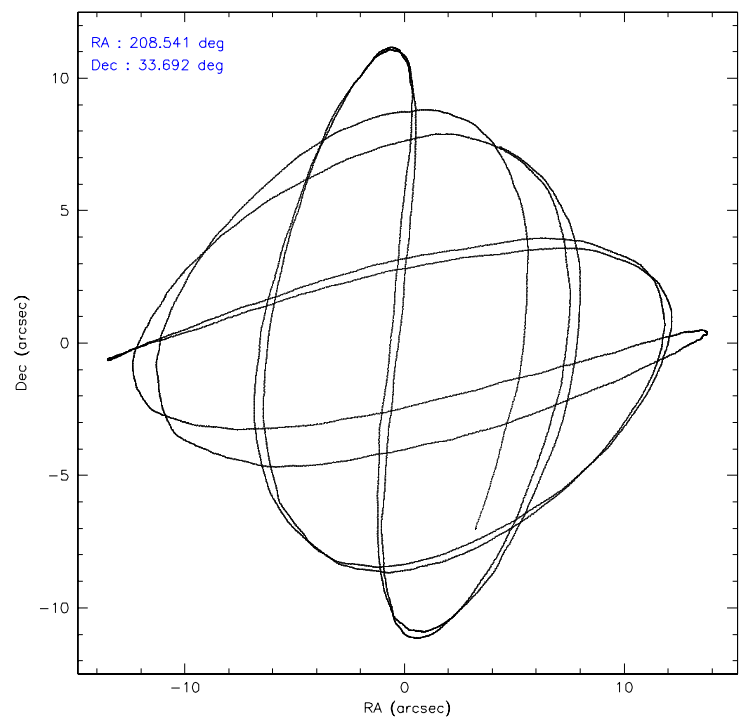
	<b>ccd 7</b>
level 1 events	27107
rejected events	16503
rejected %	60%

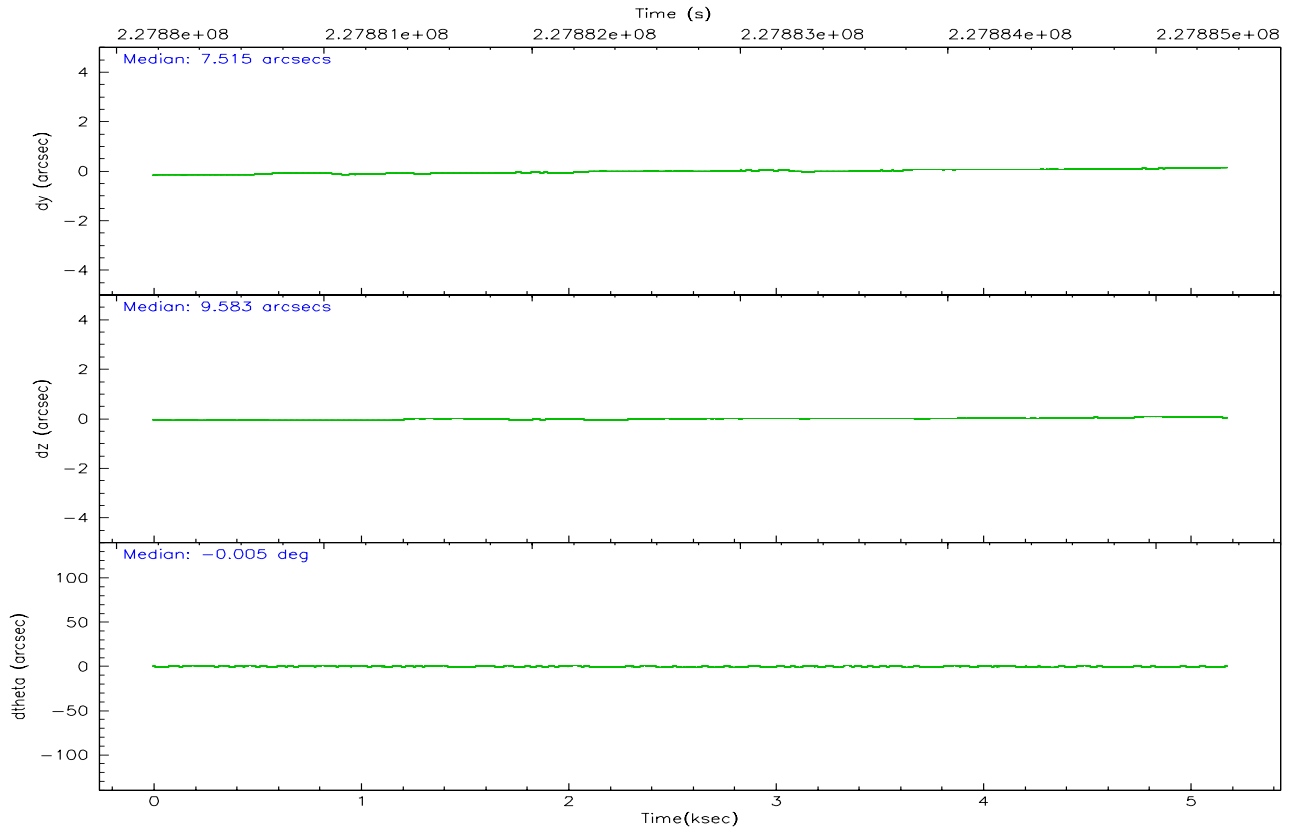
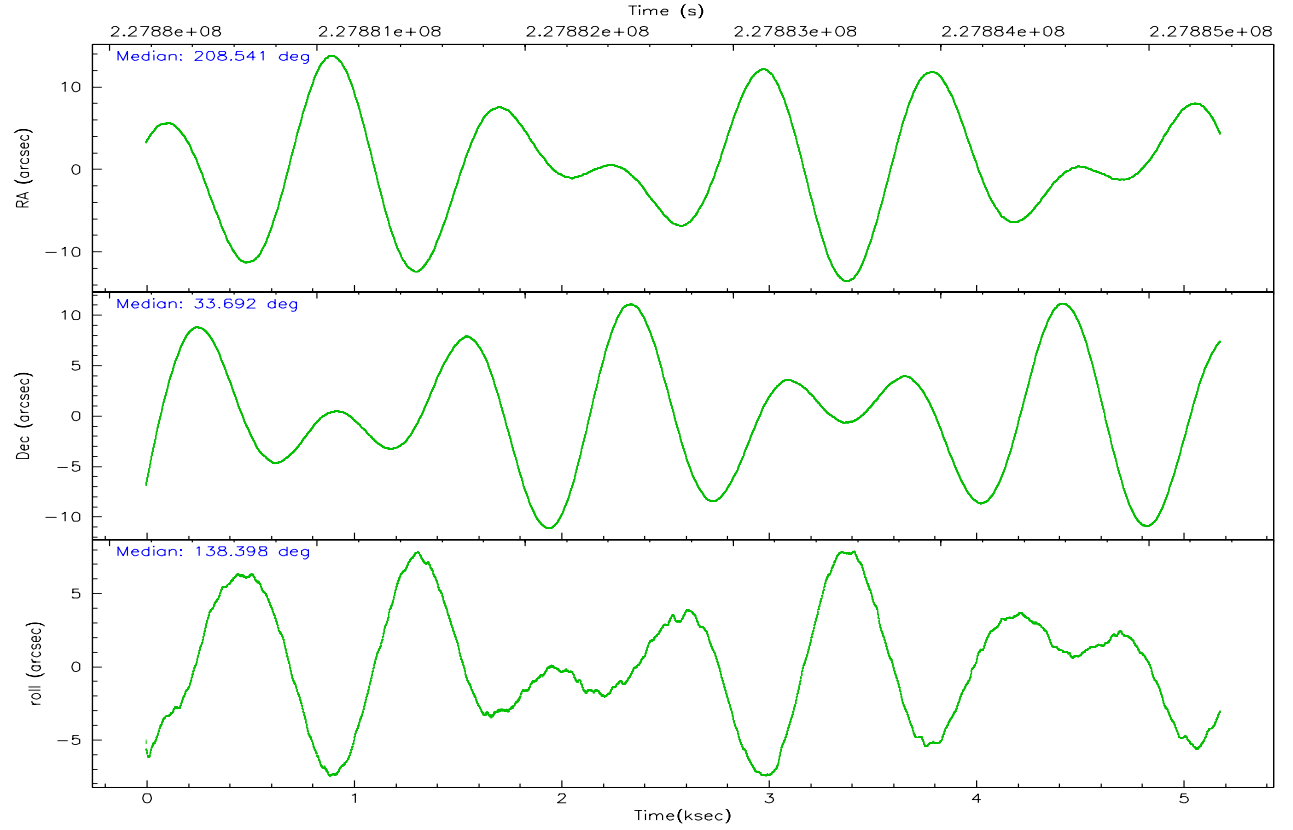
	<b>ccd 7</b>
grade 0 events	705
	2%
grade 1 events	16
	0%
grade 2 events	2722
	10%
grade 3 events	633
	2%
grade 4 events	605
	2%
grade 5 events	1916
	7%
grade 6 events	6125
	22%
grade 7 events	14385
	53%

## 2.2 Compared Parameters

Parameter	Planned	Actual	Parameter	Planned	Actual
Instrument	ACIS	ACIS	Obspar format version number	6	6
Detector	ACIS-7	ACIS-7	Obspar file type	PREDICTED	ACTUAL
Grating	NONE	NONE	Obspar update status	NONE	UPDATED
Data mode	FAINT	FAINT	On-chip summing requested	N	N
Observation mode	POINTING	POINTING	Subarray requested	1/2	1/2
Pointing RA	208.573275	208.5411823259703	Subarray start row	0	257
Pointing Dec	33.686638	33.69174938843074	Subarray row count	1024	512
Pointing Roll	138.229528	138.4039654609464	Alternating exposures requested	N	N
SIM focus pos (mm)	-0.684267	-0.6828225247311905	Primary exposure time	0.000000	1.5
SIM defocus (mm)	0	0.001444936568705701			
SIM translation stage pos (mm)	-190.132523	-190.145094680475			
SIM translation stage offset (mm)	0	0.01257209746719923			
Observation start time	227880351.184000	227879652.96401			
Observation start date	2005-03-22T12:04:47	2005-03-22T11:54:12			
Observation end time	227885351.184000	227885542.61428			
Observation end date	2005-03-22T13:28:07	2005-03-22T13:32:22			
Read mode	TIMED	TIMED			

## 2.3 Aspect





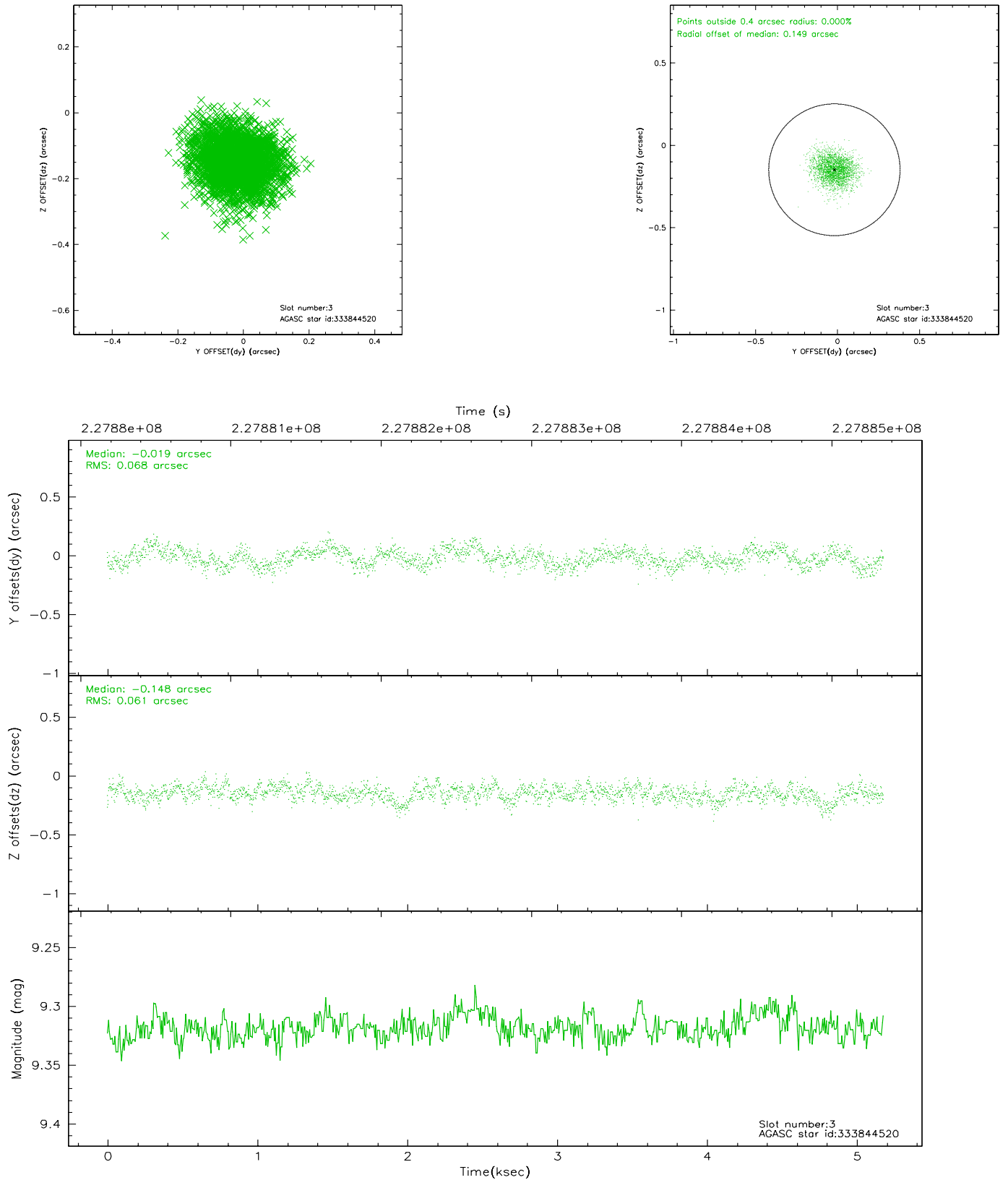
### Slot Statistics

slot	status	id	mag	n_pts	med_dy	med_dz	dr1	dr2	ra	dec	mean_y	mean_z
0	FID	ACIS-S-1	7.19	1264	0.014	0.000	0.010	0.017	0.000000	0.000000	935.78	-1726.34
1	FID	ACIS-S-4	7.21	1264	0.041	-0.003	0.011	0.016	0.000000	0.000000	2153.86	176.61
2	FID	ACIS-S-5	7.23	1264	-0.083	0.015	0.013	0.020	0.000000	0.000000	-1811.69	171.53
3	GUIDE	333844520	9.32	2528	-0.019	-0.148	0.097	0.156	208.057673	33.708550	1206.96	967.26
4	GUIDE	333845560	9.51	2526	0.145	0.005	0.120	0.195	208.480633	34.549476	2275.40	-2133.00
5	GUIDE	333845704	8.07	2528	-0.110	0.146	0.058	0.097	209.172586	33.937049	-729.66	-1868.99
6	GUIDE	333846144	9.20	2527	0.079	0.116	0.113	0.185	209.272937	33.807012	-1266.49	-1722.81
7	GUIDE	333843552	8.98	2526	-0.098	-0.121	0.101	0.152	207.943128	33.286944	459.31	2331.65

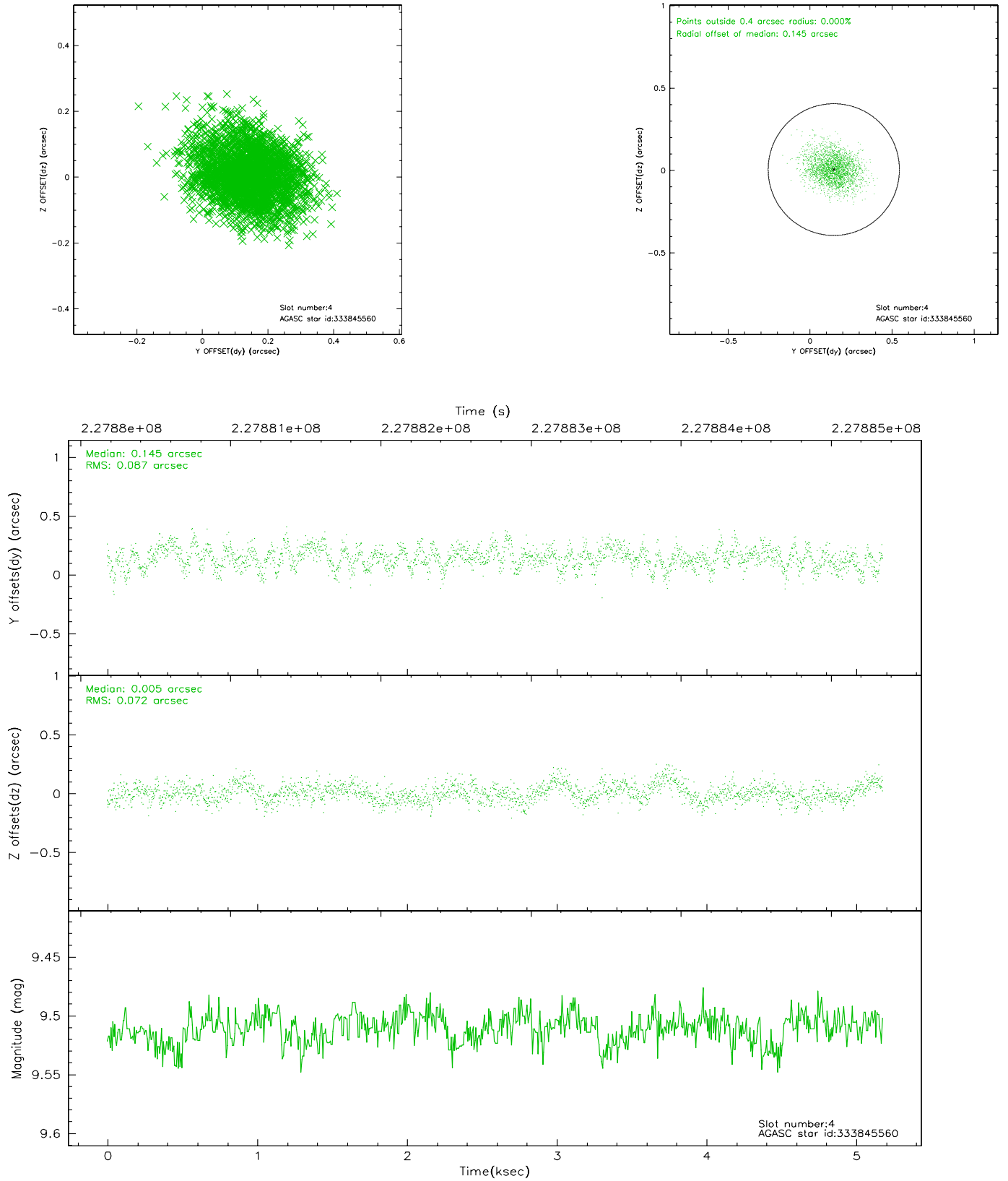


## 2.4 Star Slots

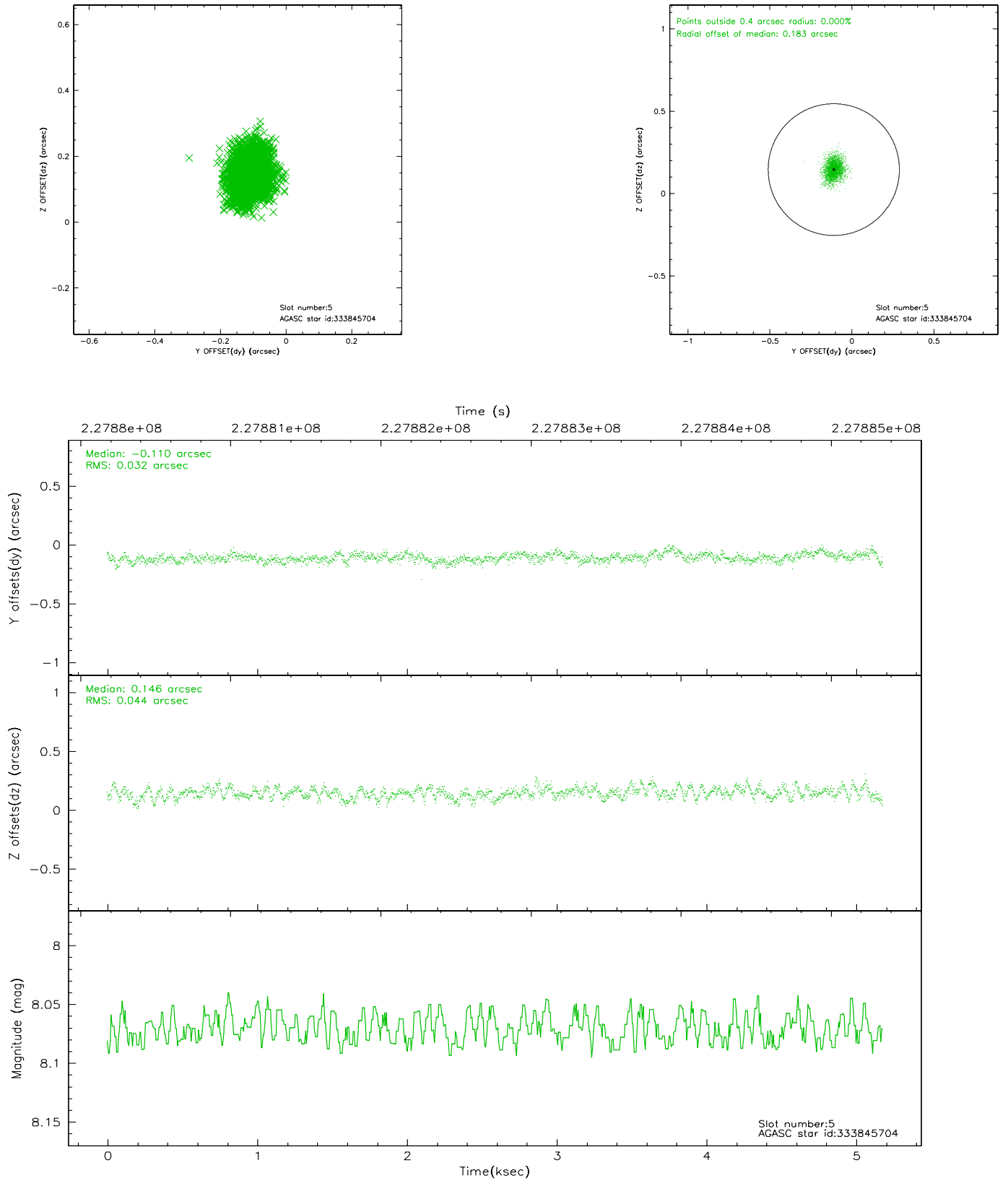
### 2.4.1 Slot 3



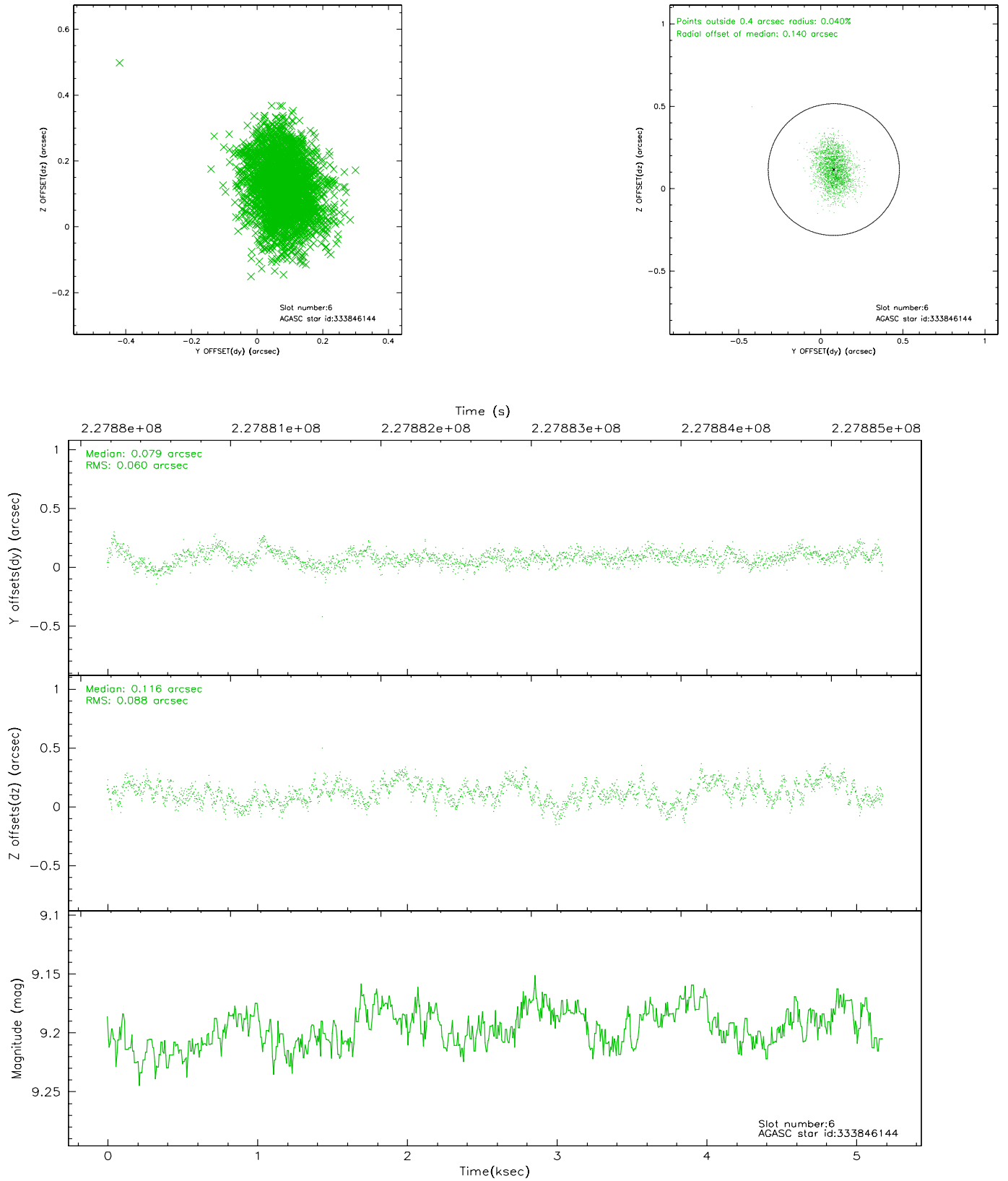
## 2.4.2 Slot 4



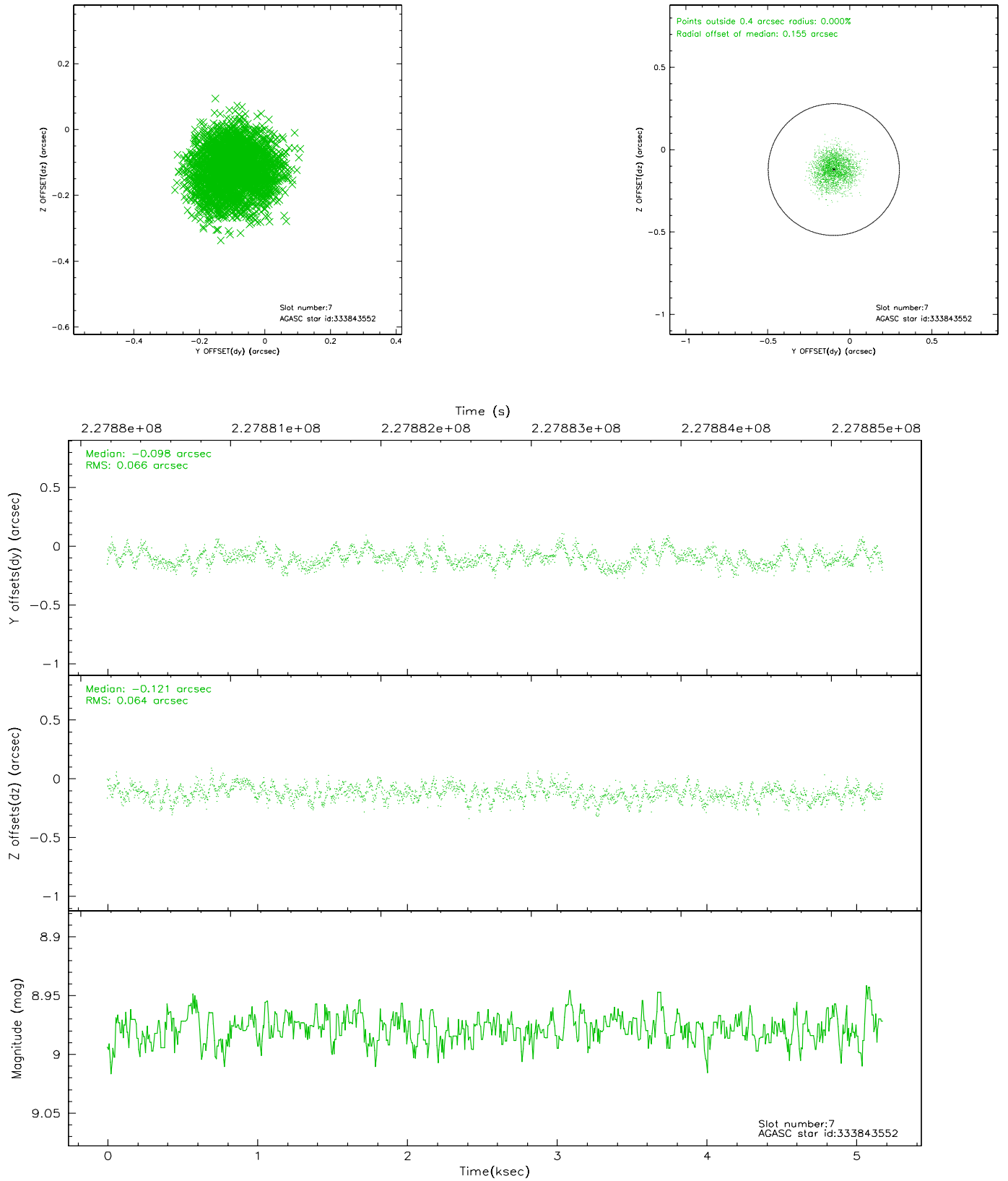
### 2.4.3 Slot 5



## 2.4.4 Slot 6

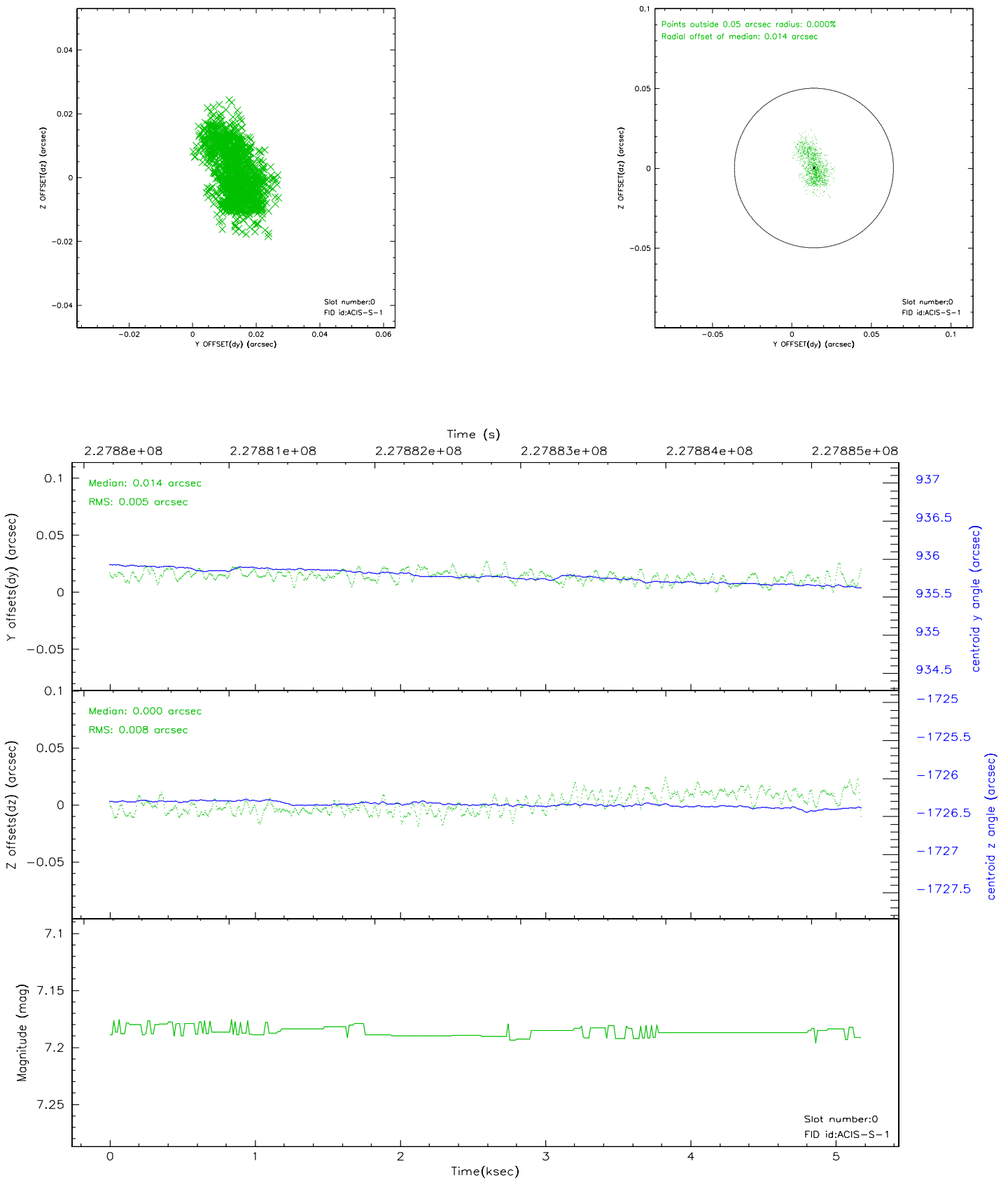


## 2.4.5 Slot 7

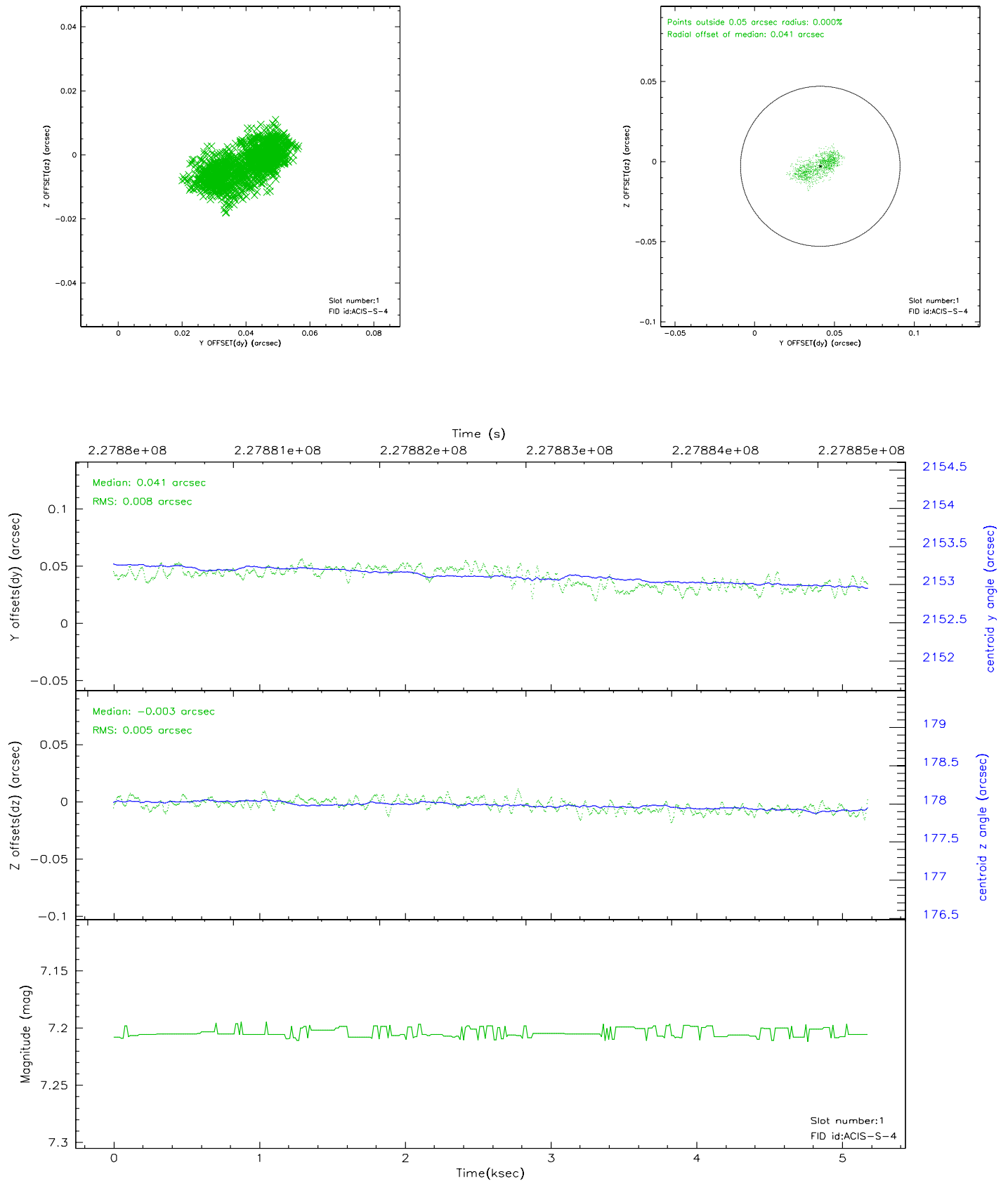


## 2.5 FID Slots

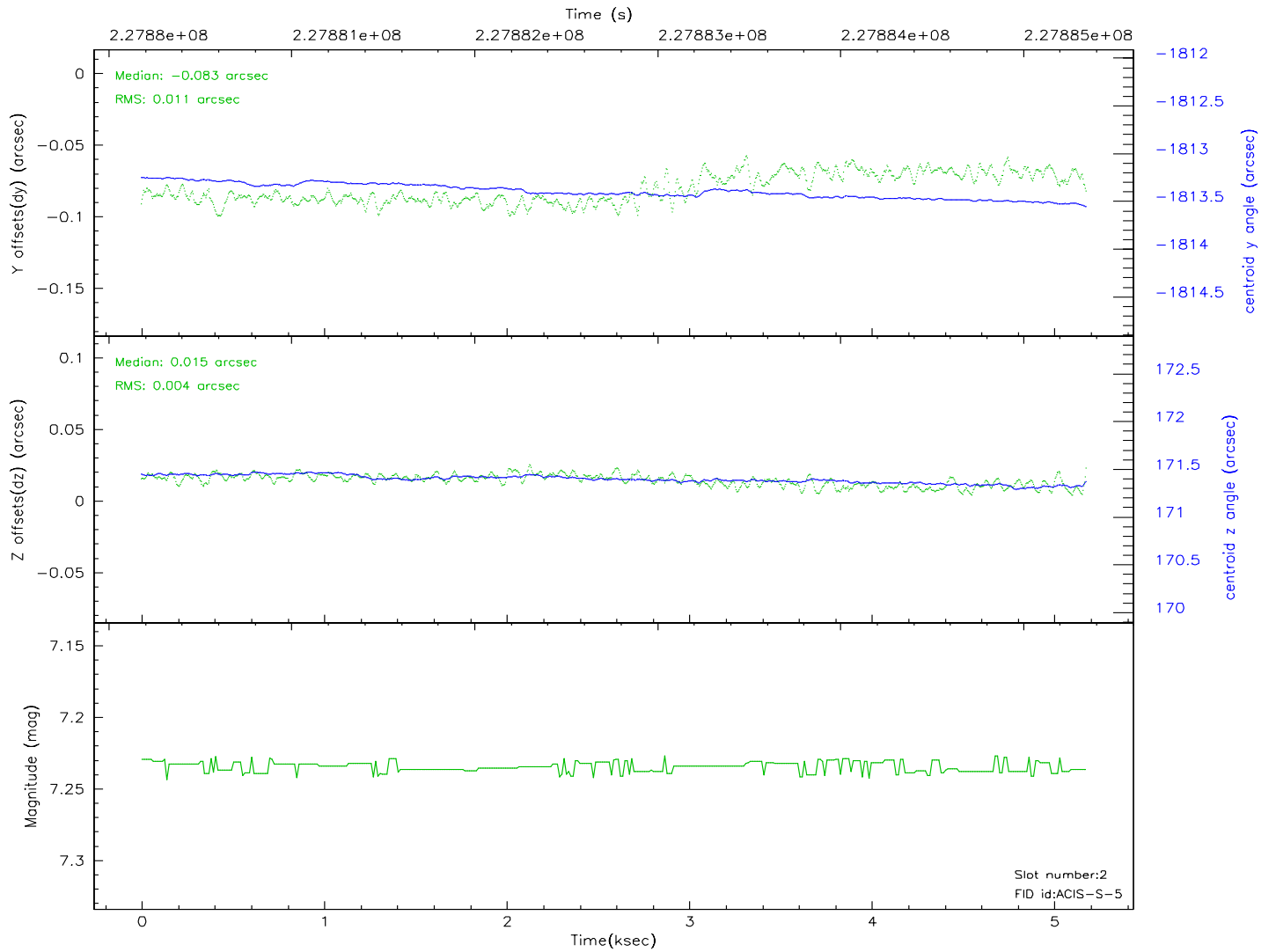
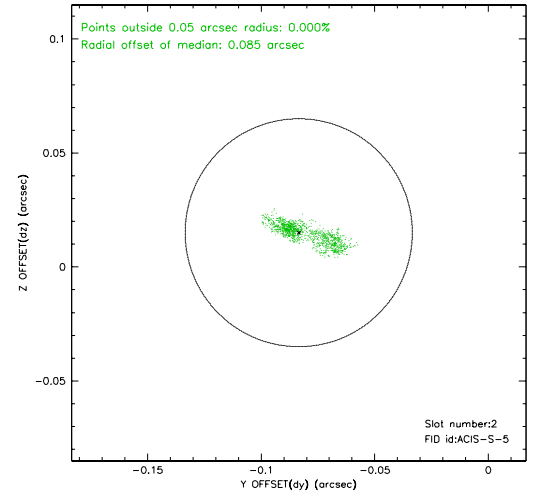
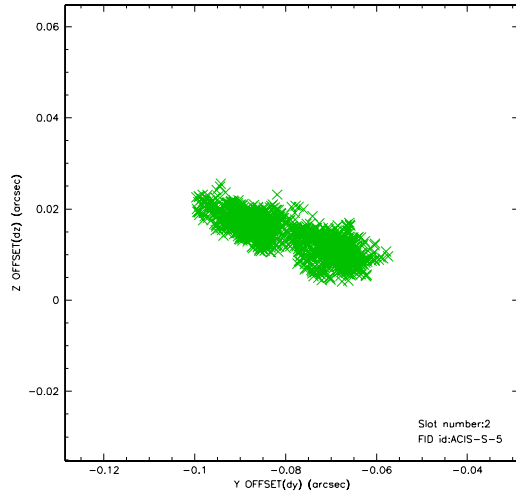
### 2.5.1 Slot 0



## 2.5.2 Slot 1



### 2.5.3 Slot 2





### 3 Point Sources

## A Summary

### A.1 Status

V&V Scientist	Jen Lauer
V&V Date (YYYY-MM-DD)	2006.03.17
V&V Edition	1
V&V Disposition and Status	OK
V&V Charge Time	5.178

### A.2 Comments