

V&V Reference Report

L2 ASCDS Version : 7.6.7

Observation 5684 - L2 Version 002
Chandra X-Ray Center

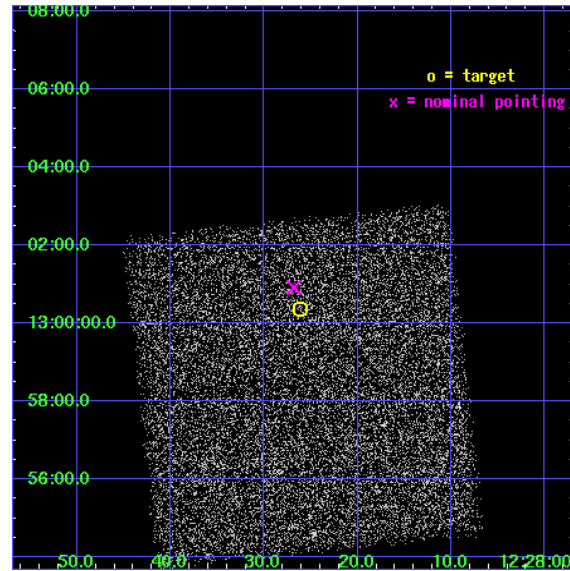
L2 Processing Date: Feb 22 2006

Contents

1	Front	2
2	OBI	3
2.1	OBI	3
2.1.1	Images	3
2.1.2	Bias	3
2.1.3	Parameters	4
2.1.4	Events	4
2.2	Compared Parameters	5
2.3	Aspect	6
2.4	Star Slots	9
2.4.1	Slot 3	9
2.4.2	Slot 4	10
2.4.3	Slot 5	11
2.4.4	Slot 6	12
2.4.5	Slot 7	13
2.5	FID Slots	14
2.5.1	Slot 0	14
2.5.2	Slot 1	15
2.5.3	Slot 2	16
3	Point Sources	17
A	Summary	18
A.1	Status	18
A.2	Comments	18

1 Front

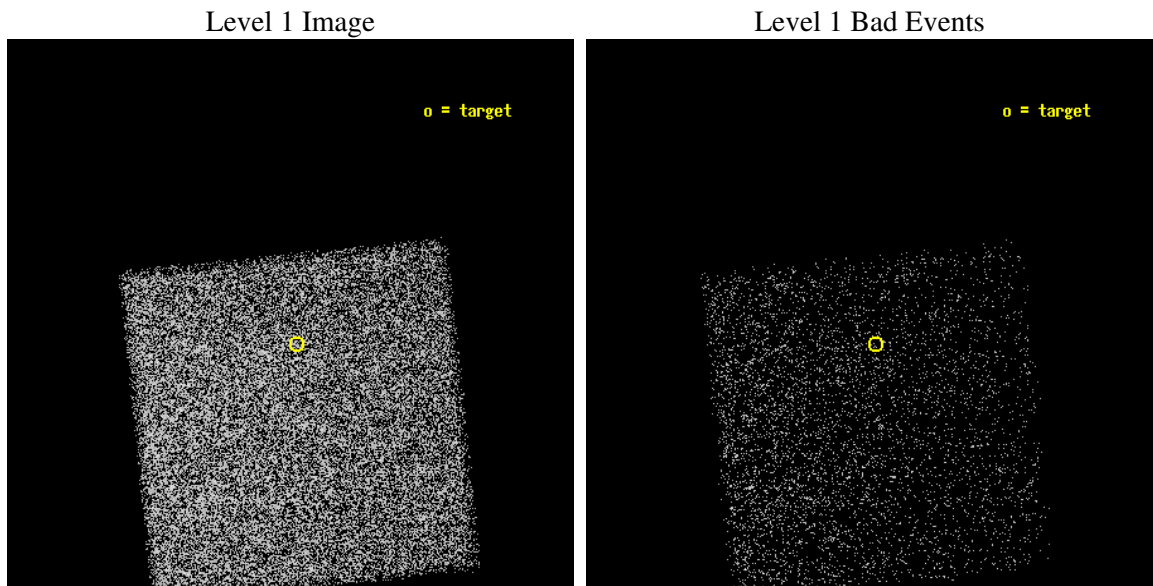
seq_num	701107
obs_id	5684
title	Bringing in the Last SHEEP
observer	Dr Kirpal Nandra
object	AX J1228.4+1300
dtcycle	0
cycle	P
ra_targ	187.109167
dec_targ	13.006111
ra_nom	187.11182637832
dec_nom	13.015355947941
roll_nom	84.10919722585
revision	2
ontime	5084.7999810576
livetime	5020.4131819985
ontime7	5084.7999810576
l2events	20128



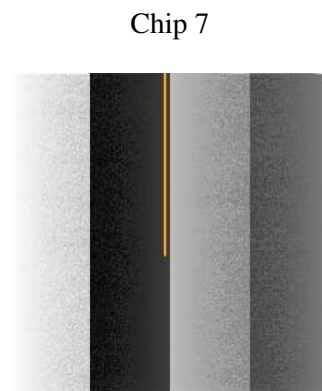
2 OBI

2.1 OBI

2.1.1 Images



2.1.2 Bias



2.1.3 Parameters

obi_num	1
ascdsver	7.6.7
caldsver	3.2.1
date	2006-02-23T00:04:31
revision	2

sched_exp_time	5000.000000
ontime	5088.3925003707
ontime7	5088.3925003707
l1events	50208

2.1.4 Events

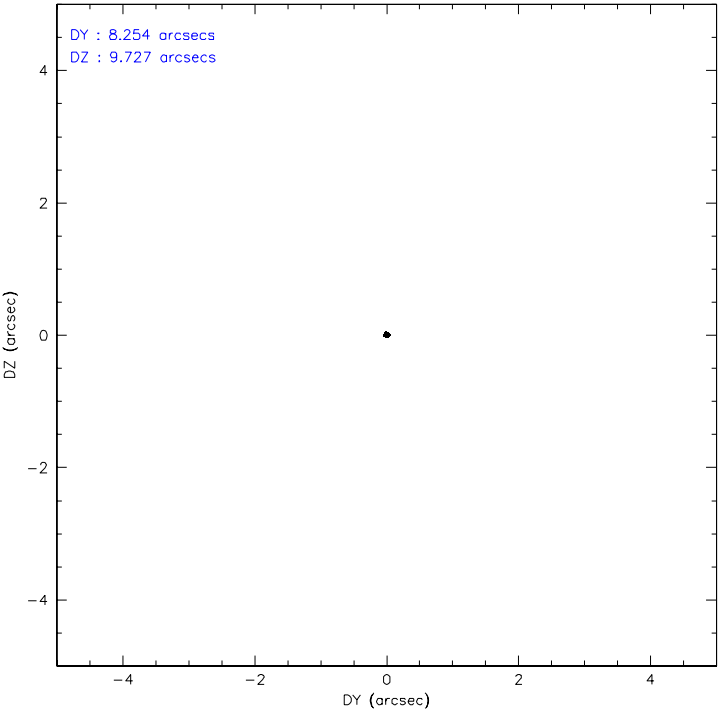
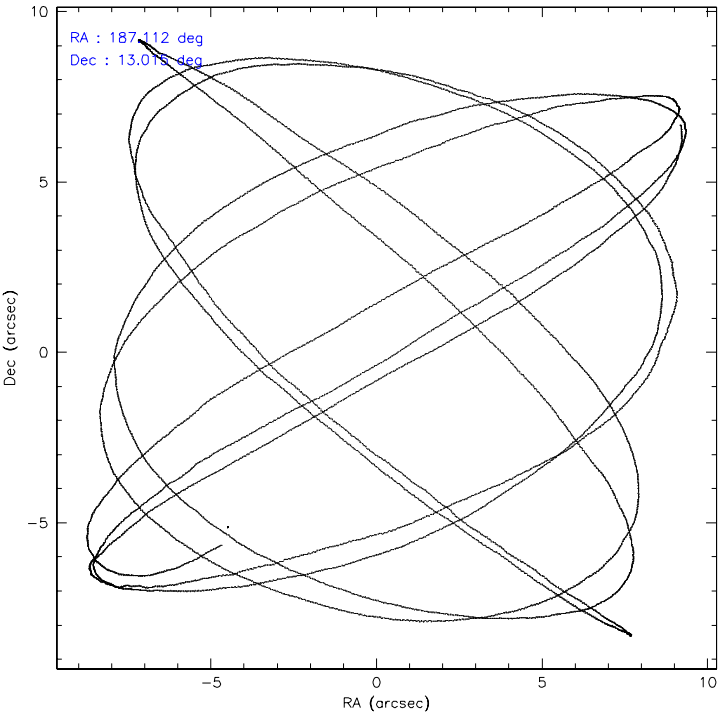
	ccd 7
level 1 events	50208
rejected events	29616
rejected %	58%

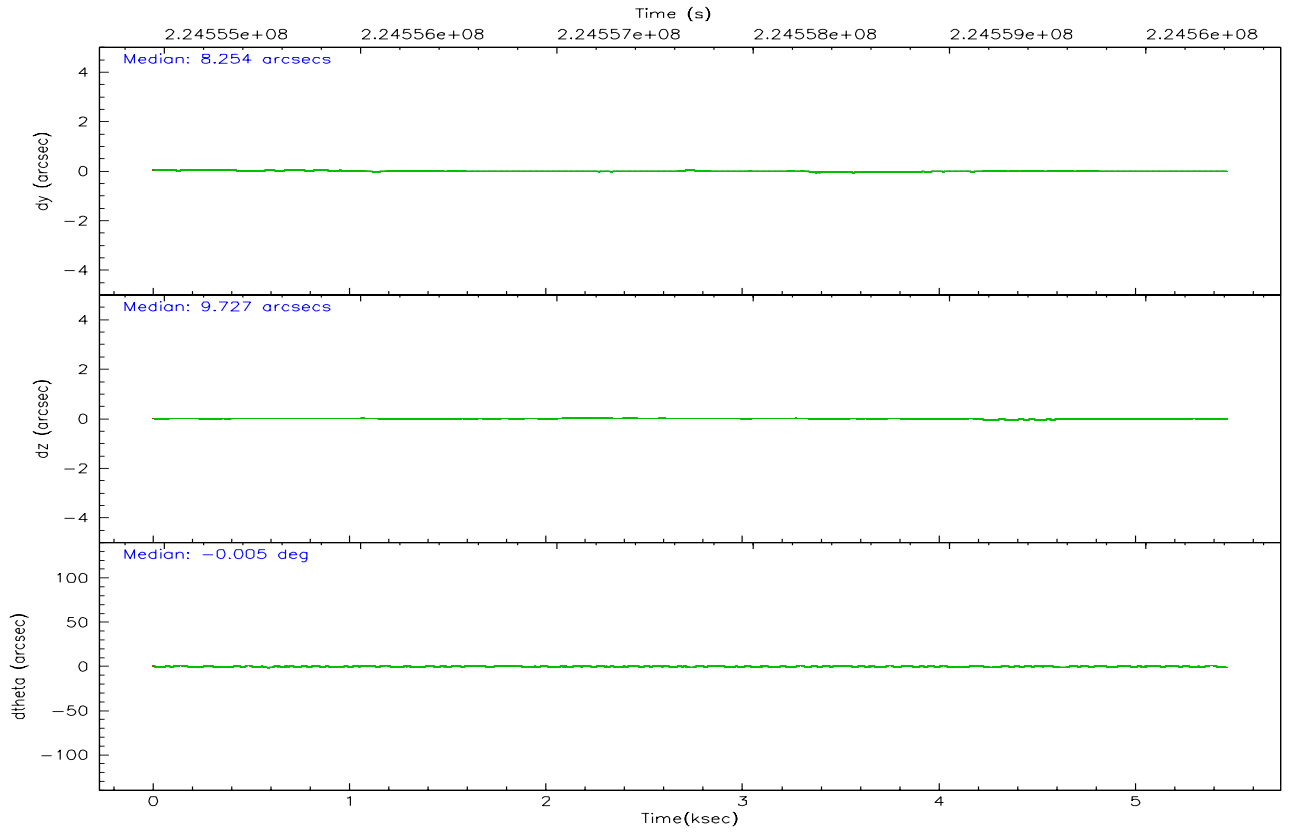
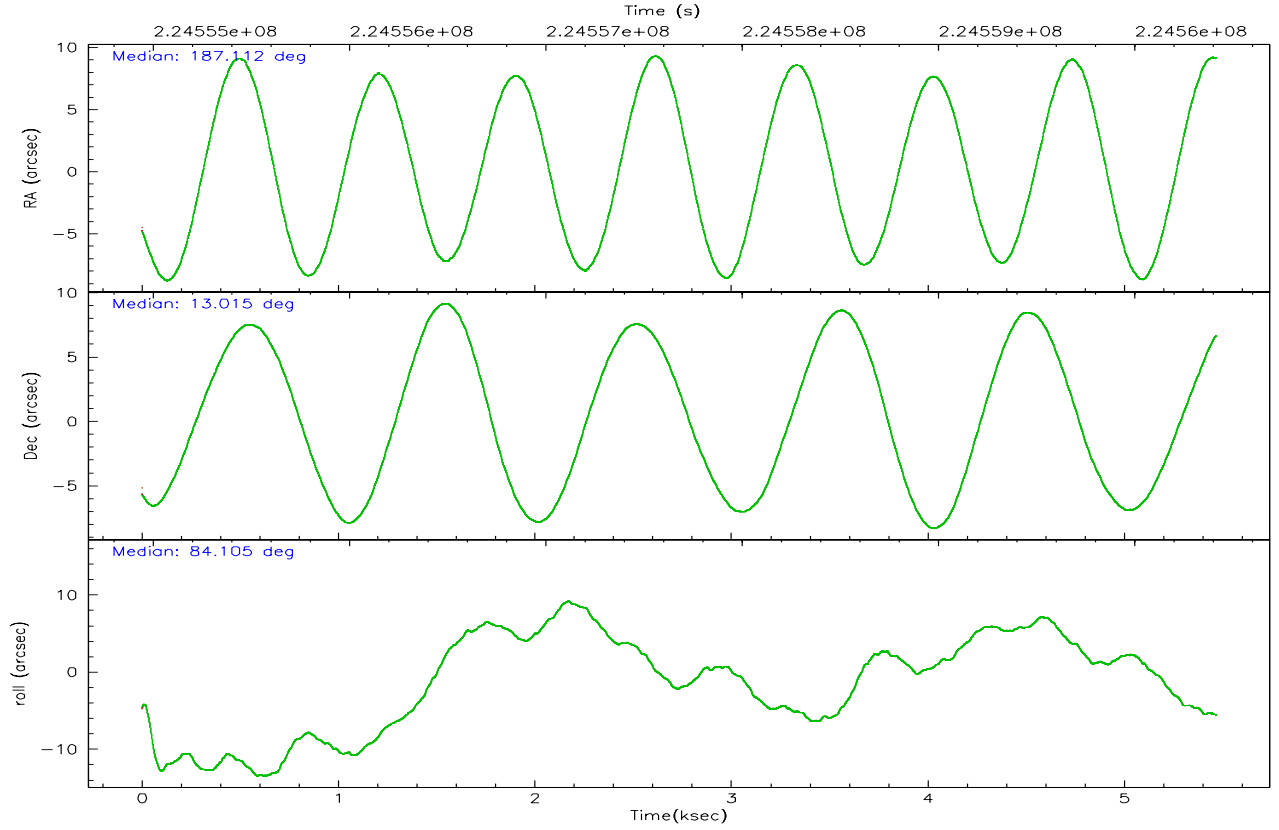
	ccd 7
grade 0 events	1656
	3%
grade 1 events	39
	0%
grade 2 events	5181
	10%
grade 3 events	1130
	2%
grade 4 events	1089
	2%
grade 5 events	3115
	6%
grade 6 events	11550
	23%
grade 7 events	26448
	52%

2.2 Compared Parameters

Parameter	Planned	Actual	Parameter	Planned	Actual
Instrument	ACIS	ACIS	Obspar format version number	6	6
Detector	ACIS-7	ACIS-7	Obspar file type	PREDICTED	ACTUAL
Grating	NONE	NONE	Obspar update status	NONE	UPDATED
Data mode	FAINT	FAINT	On-chip summing requested	N	N
Observation mode	POINTING	POINTING	Subarray requested	NONE	NONE
Pointing RA	187.123655	187.1118263783167	Alternating exposures requested	N	N
Pointing Dec	12.990704	13.01535594794103	Primary exposure time	0.000000	3.2
Pointing Roll	83.949883	84.10919722585035			
SIM focus pos (mm)	-0.684267	-0.6828225247311905			
SIM defocus (mm)	0	0.001444936568705701			
SIM translation stage pos (mm)	-190.132523	-190.1400660498719			
SIM translation stage offset (mm)	0	0.00754346686406393			
Observation start time	224555411.184000	224554570.75087			
Observation start date	2005-02-12T00:29:07	2005-02-12T00:16:10			
Observation end time	224560411.184000	224561067.20117			
Observation end date	2005-02-12T01:52:27	2005-02-12T02:04:27			
Read mode	TIMED	TIMED			

2.3 Aspect



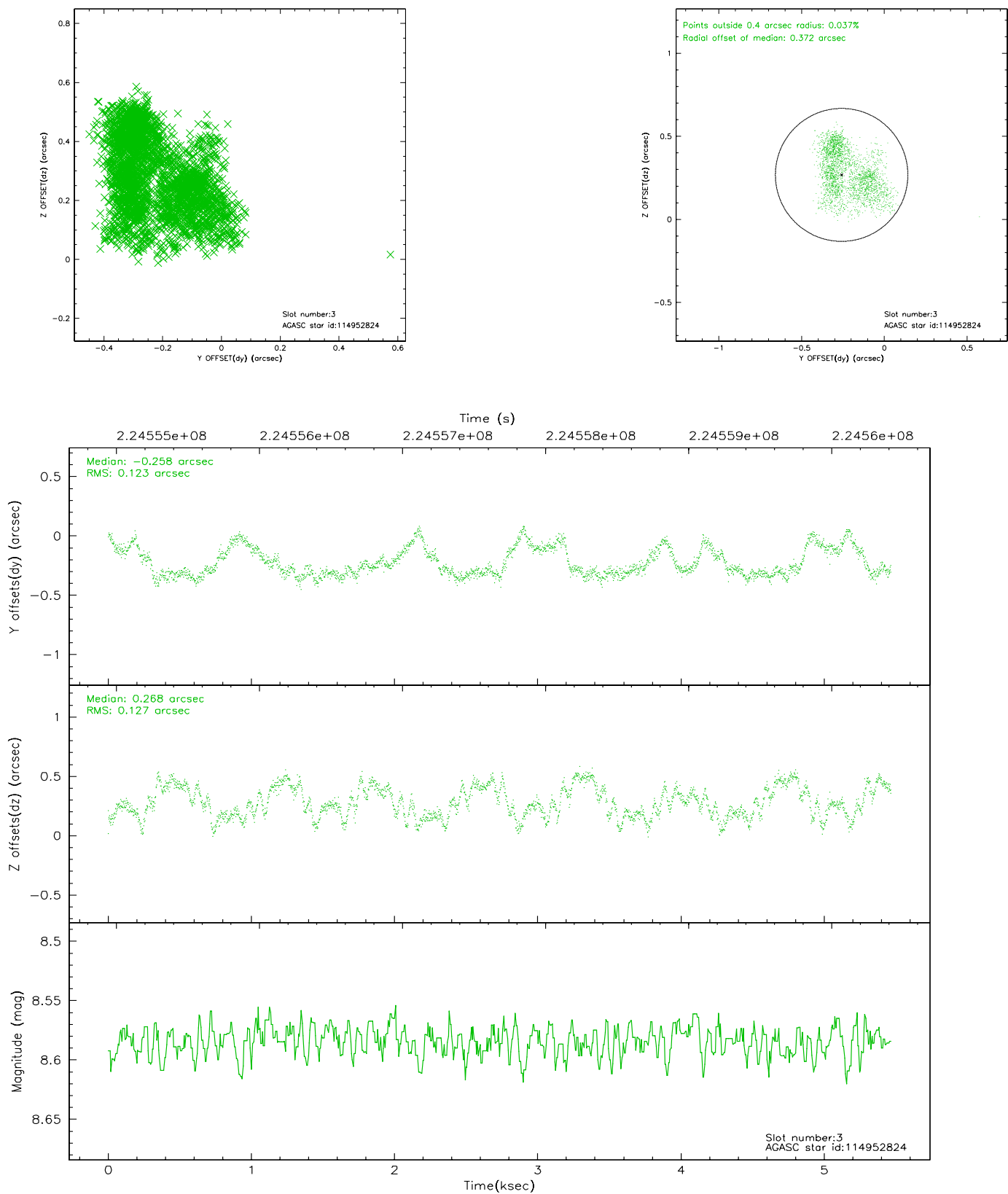


Slot Statistics

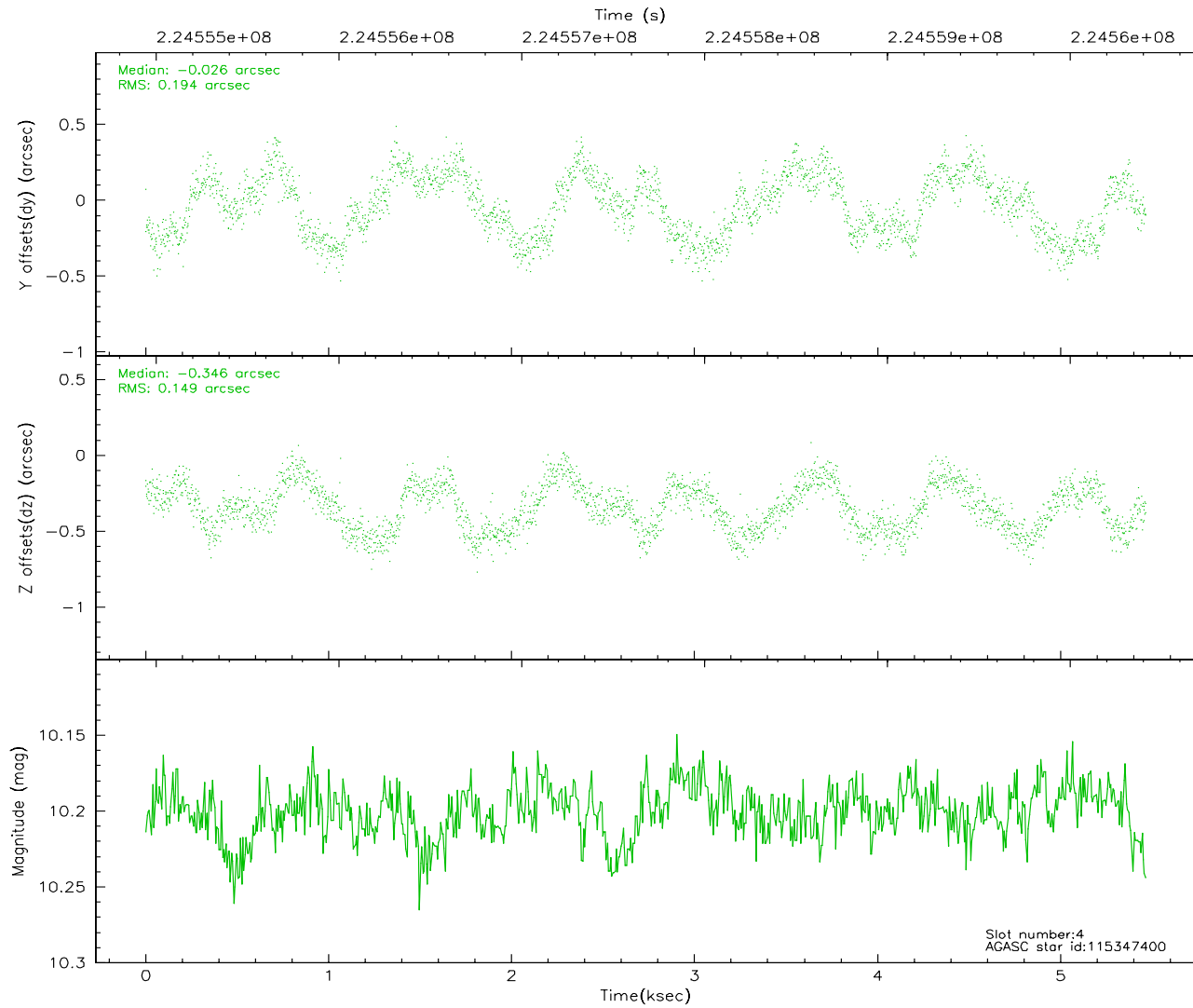
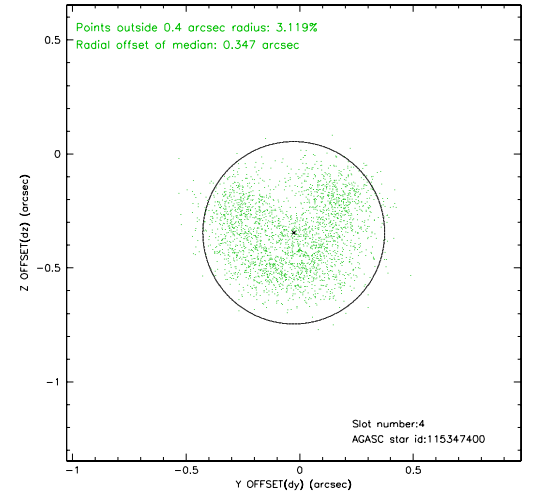
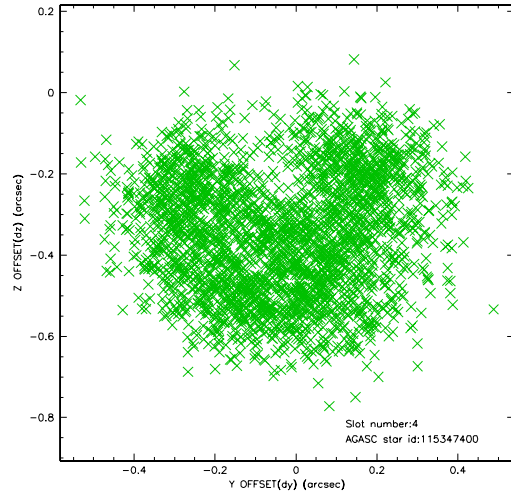
slot	status	id	mag	n_pts	med_dy	med_dz	dr1	dr2	ra	dec	mean_y	mean_z
0	FID	ACIS-S-2	7.11	1334	-0.029	-0.012	0.006	0.011	0.000000	0.000000	-761.03	-1730.99
1	FID	ACIS-S-4	7.21	1334	0.085	0.017	0.005	0.008	0.000000	0.000000	2151.82	176.44
2	FID	ACIS-S-5	7.24	1334	-0.088	0.004	0.006	0.011	0.000000	0.000000	-1812.56	171.27
3	GUIDE	114952824	8.58	2668	-0.258	0.268	0.194	0.280	187.703904	12.486727	-1586.56	-2218.97
4	GUIDE	115347400	10.20	2661	-0.026	-0.346	0.271	0.381	186.994146	13.445598	1580.54	622.65
5	GUIDE	115347480	9.35	2662	-0.313	-0.163	0.128	0.194	186.668576	13.310410	978.65	1706.96
6	GUIDE	115348424	9.51	2667	-0.052	0.003	0.127	0.227	187.199498	13.087929	376.89	-227.00
7	GUIDE	115348632	10.58	2657	0.644	0.242	0.165	0.270	187.536861	13.233195	1023.36	-1347.67

2.4 Star Slots

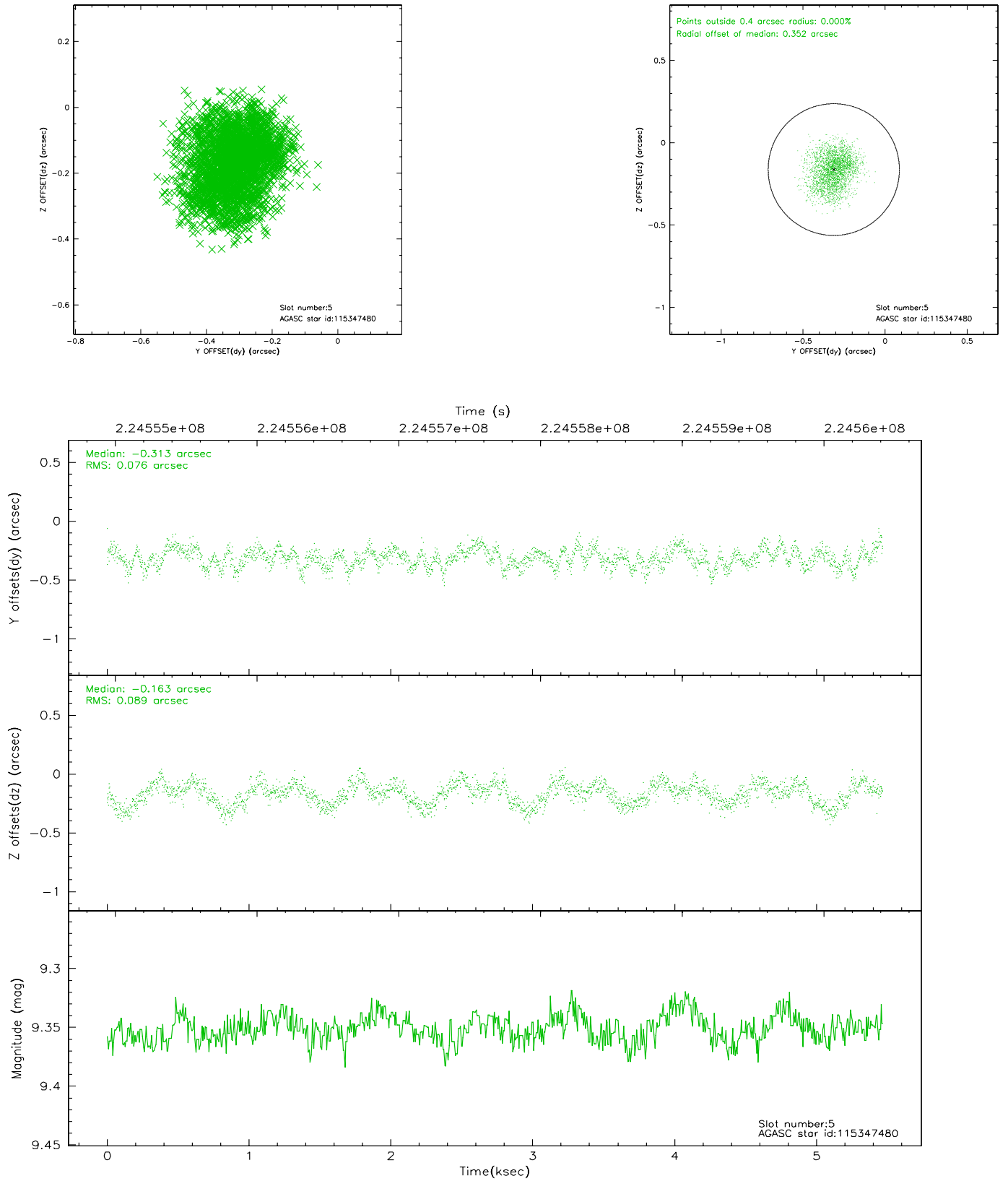
2.4.1 Slot 3



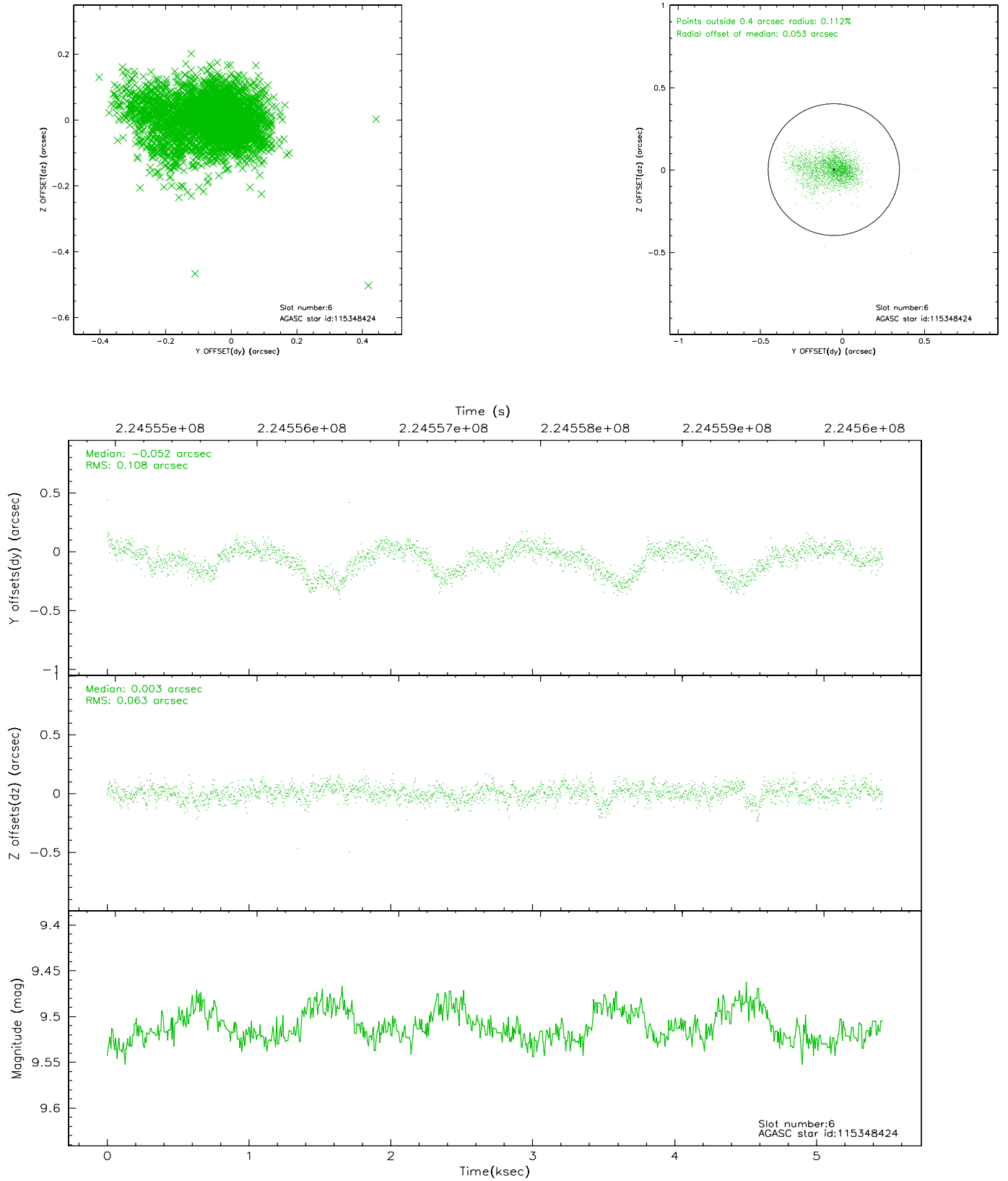
2.4.2 Slot 4



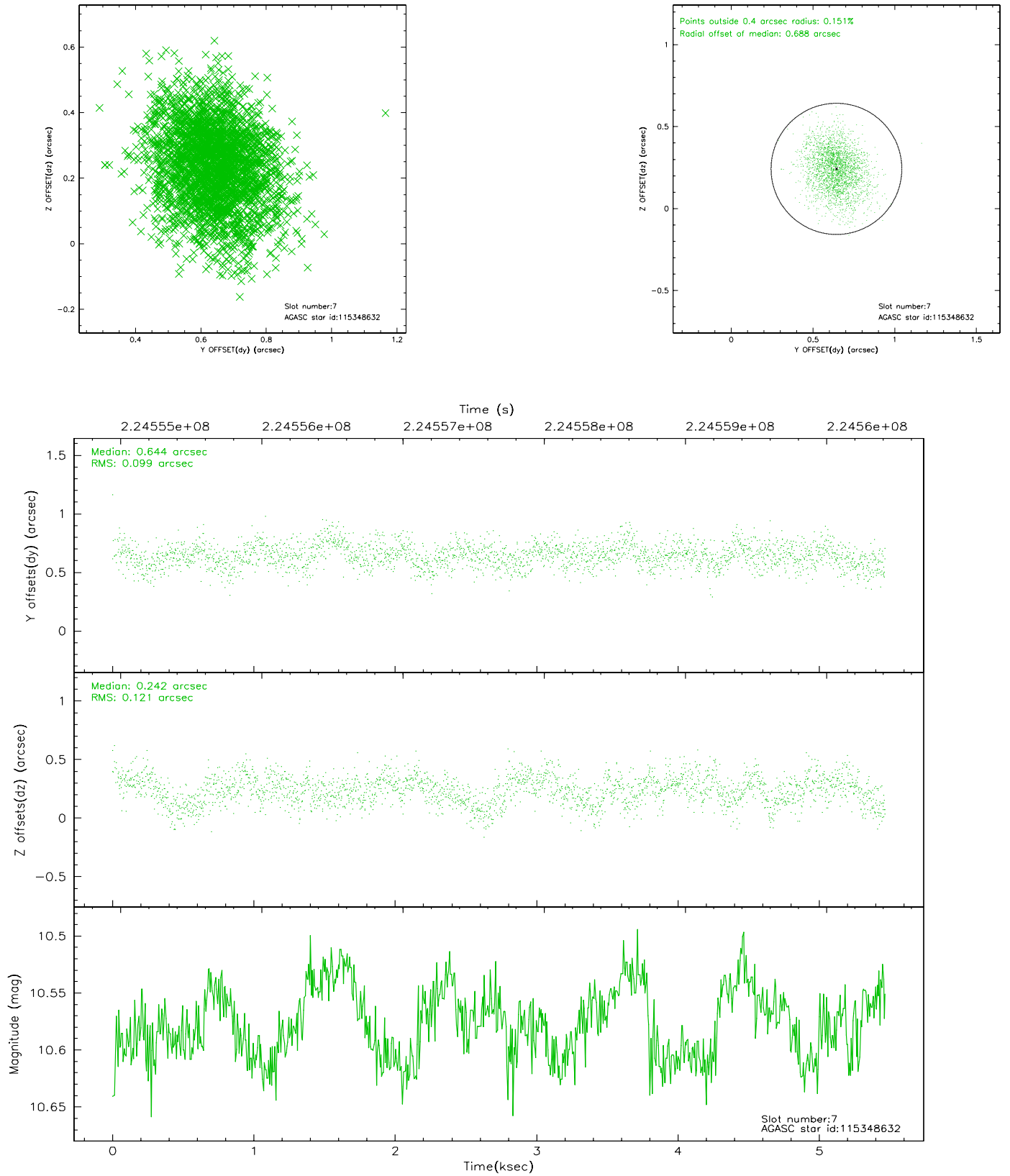
2.4.3 Slot 5



2.4.4 Slot 6

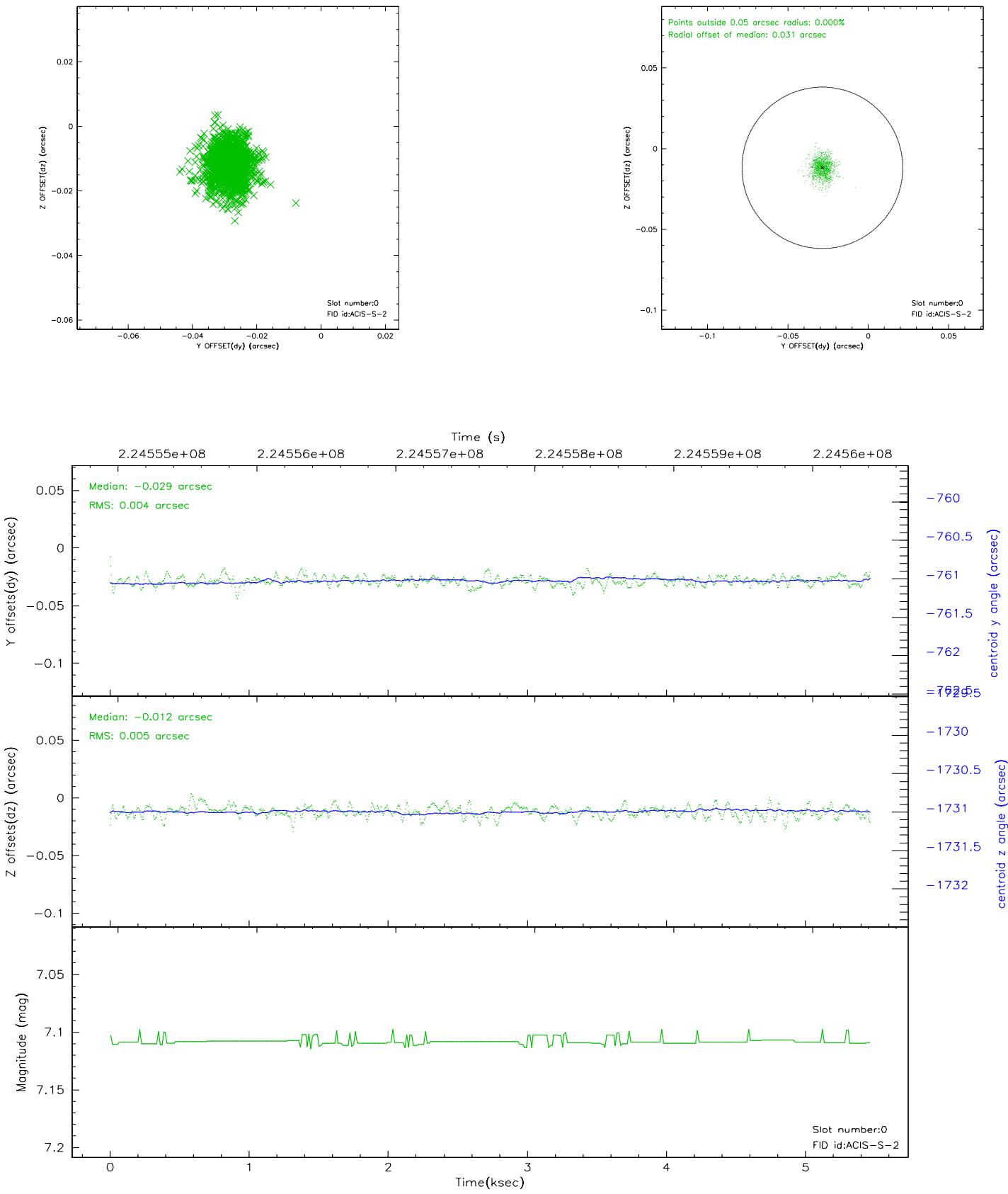


2.4.5 Slot 7

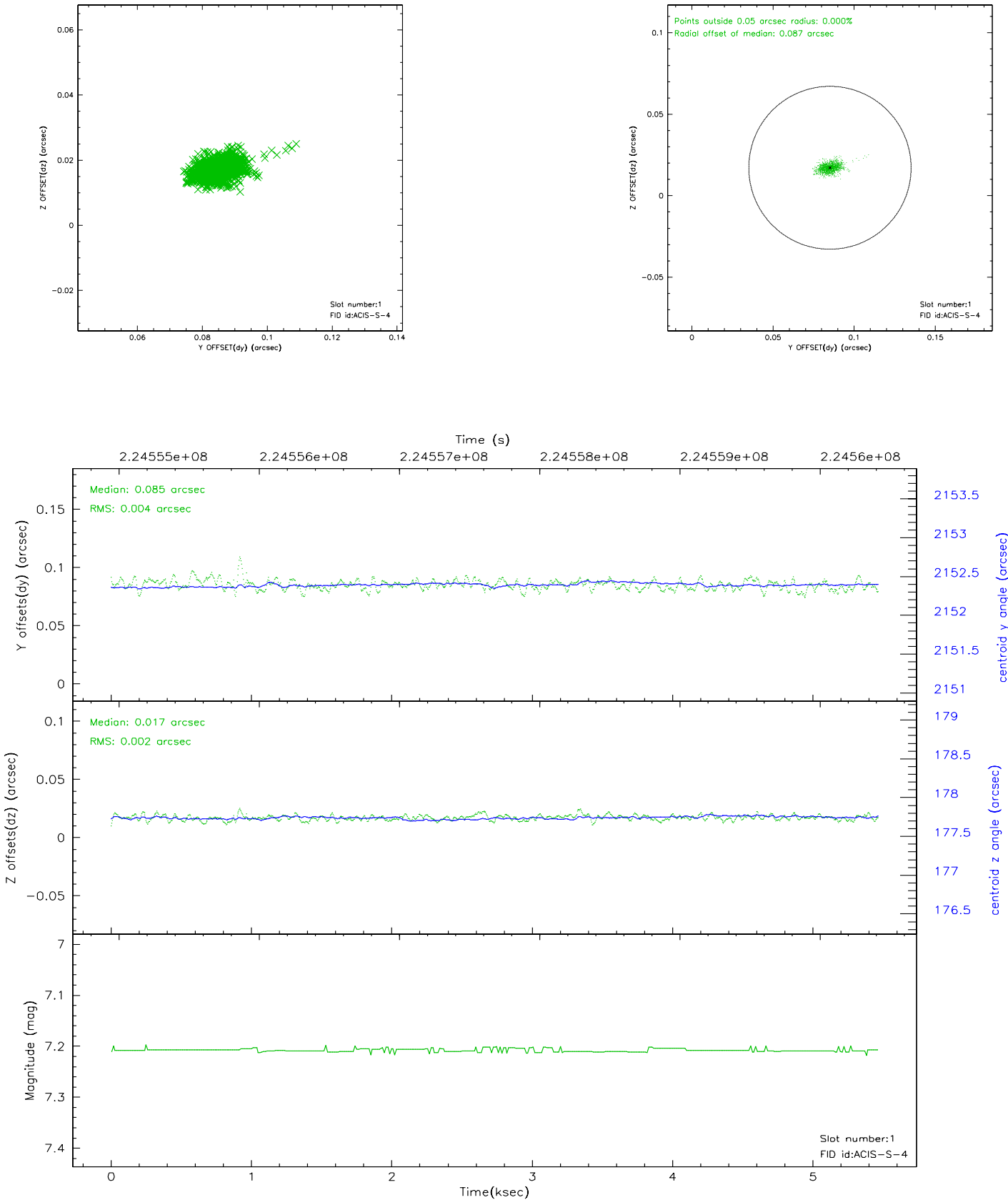


2.5 FID Slots

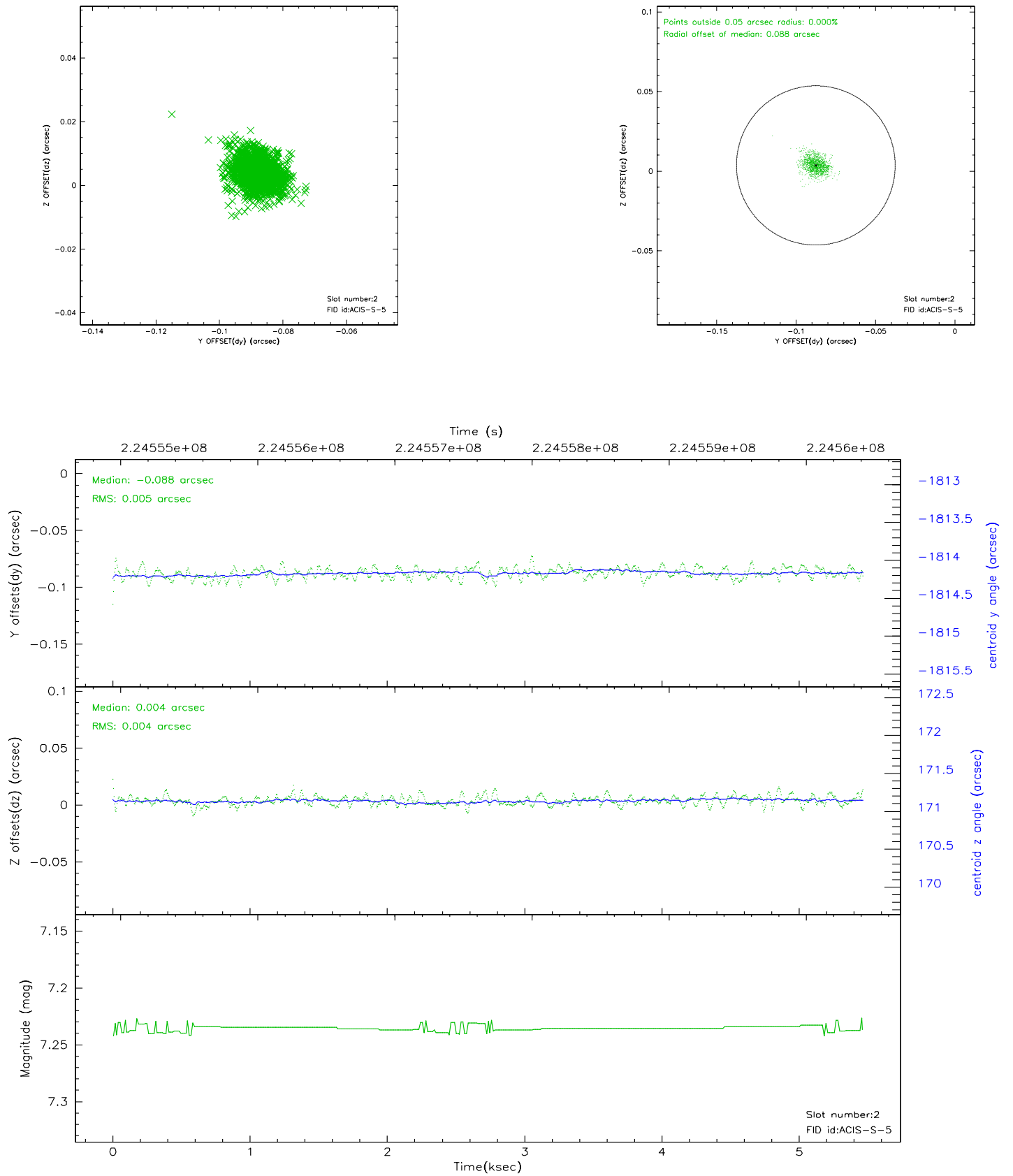
2.5.1 Slot 0



2.5.2 Slot 1



2.5.3 Slot 2



3 Point Sources

A Summary

A.1 Status

V&V Scientist	Beth Sundheim
V&V Date (YYYY-MM-DD)	2006.02.23
V&V Edition	1
V&V Disposition and Status	OK
V&V Charge Time	5.084799

A.2 Comments