

V&V Reference Report

L2 ASCDS Version : 7.6.7.1

Observation 5676 - L2 Version 002
Chandra X-Ray Center

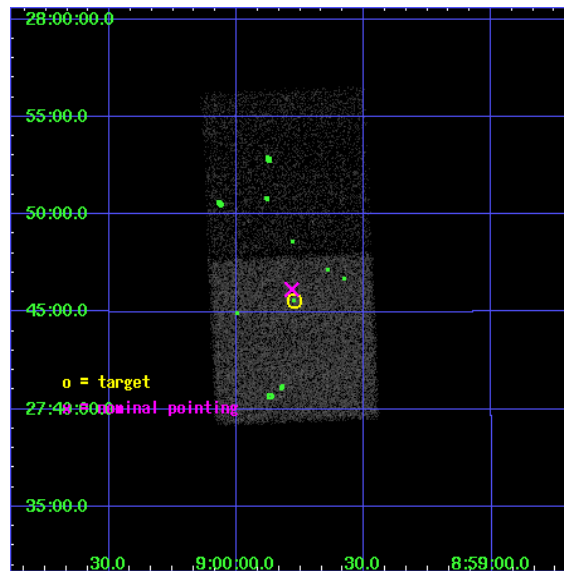
L2 Processing Date : Apr 7 2006

Contents

1	Front	2
2	OBI	3
2.1	OBI	3
2.1.1	Images	3
2.1.2	Bias	3
2.1.3	Parameters	4
2.1.4	Events	4
2.2	Compared Parameters	5
2.3	Aspect	6
2.4	Star Slots	9
2.4.1	Slot 3	9
2.4.2	Slot 4	10
2.4.3	Slot 5	11
2.4.4	Slot 6	12
2.4.5	Slot 7	13
2.5	FID Slots	14
2.5.1	Slot 0	14
2.5.2	Slot 1	15
2.5.3	Slot 2	16
3	Point Sources	17
A	Summary	18
A.1	Status	18
A.2	Comments	18

1 Front

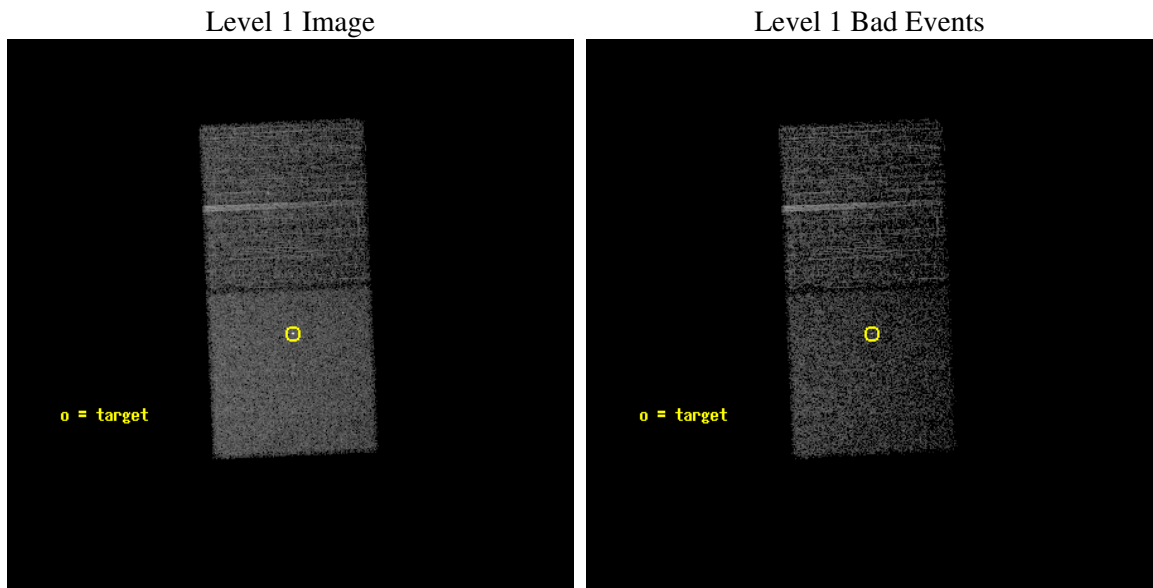
seq_num	701099
obs_id	5676
title	Gems in the Chandra Deep Fields: The Nature of Optically Passive X-ray Galaxies (aka XBONGs)
observer	Dr. Sally Laurent-Muehleisen
object	RXJ0859.8+2745
dtcycle	0
cycle	P
ra_targ	134.943333
dec_targ	27.759667
ra_nom	134.94576042338
dec_nom	27.769169812426
roll_nom	87.492368907854
revision	2
ontime	7464.0
livetime	7363.2704601058
ontime6	7464.0
ontime7	7464.0
l2events	35749



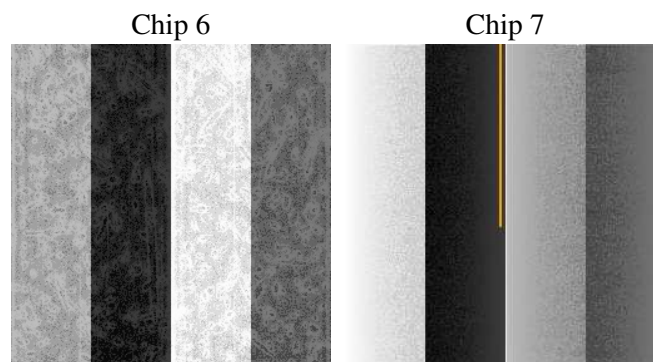
2 OBI

2.1 OBI

2.1.1 Images



2.1.2 Bias



2.1.3 Parameters

obi_num	0
ascdsver	7.6.7.1
caldbver	3.2.1
date	2006-04-07T12:57:02
revision	2

sched_exp_time	7280.000000
ontime	7538.6723997593
ontime6	7538.6723997593
ontime7	7538.6723997593
l1events	138433

2.1.4 Events

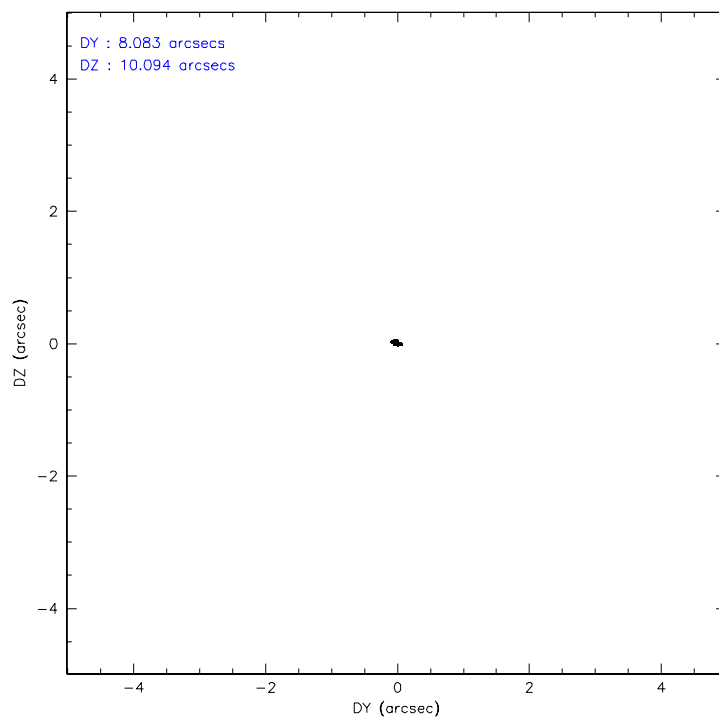
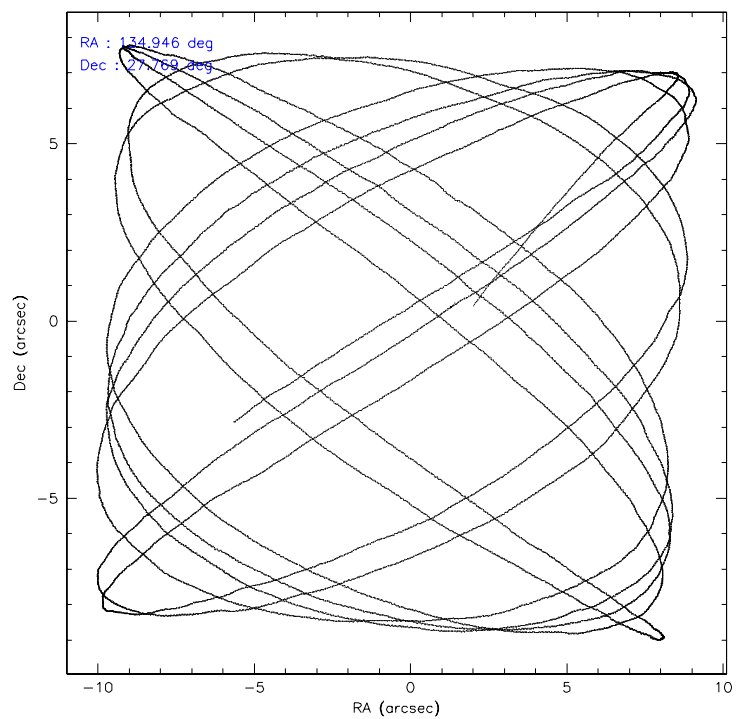
	ccd 6	ccd 7
level 1 events	59444	78989
rejected events	52450	48701
rejected %	88%	61%

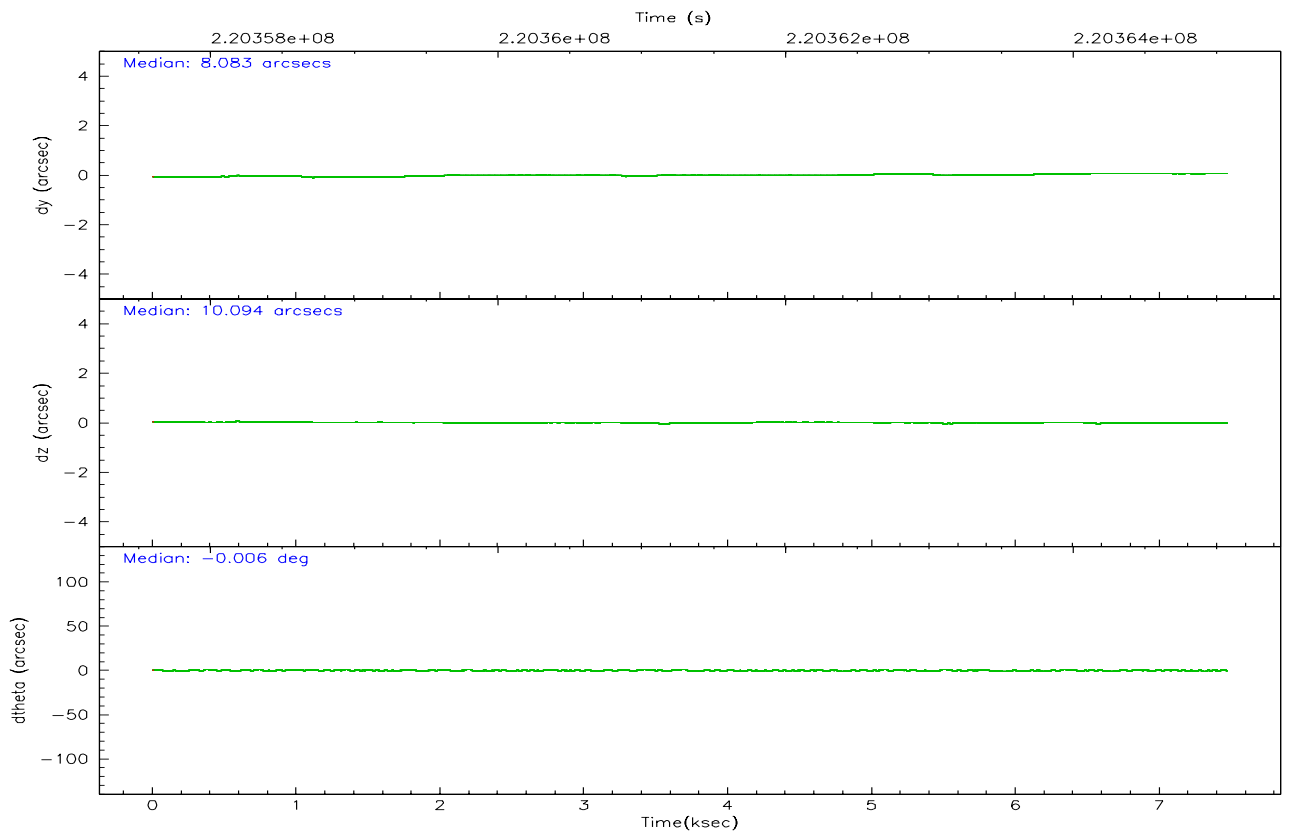
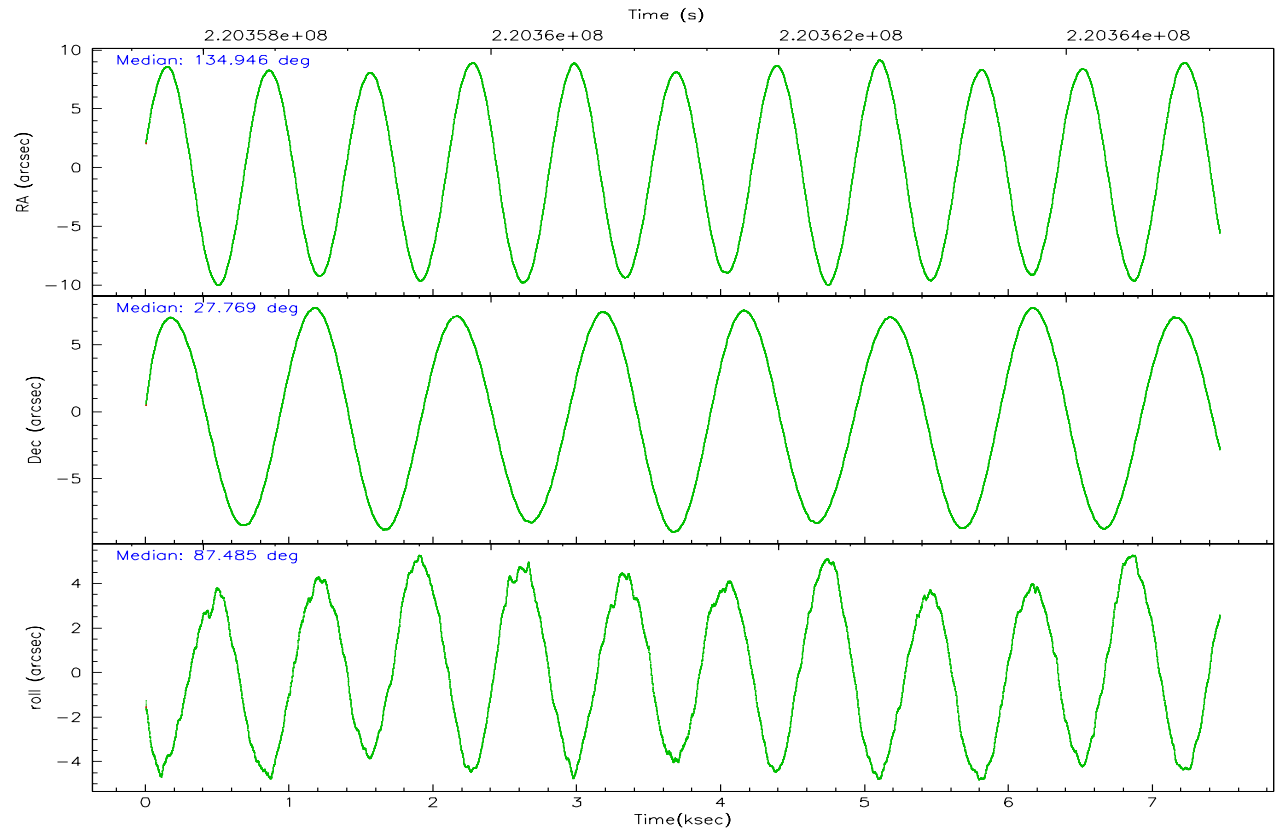
	ccd 6	ccd 7
grade 0 events	2795	1951
	4%	2%
grade 1 events	26	62
	0%	0%
grade 2 events	1438	7648
	2%	9%
grade 3 events	696	1522
	1%	1%
grade 4 events	684	1475
	1%	1%
grade 5 events	2625	5205
	4%	6%
grade 6 events	1451	17996
	2%	22%
grade 7 events	49729	43130
	83%	54%

2.2 Compared Parameters

Parameter	Planned	Actual	Parameter	Planned	Actual
Instrument	ACIS	ACIS	Obspar format version number	6	6
Detector	ACIS-67	ACIS-67	Obspar file type	PREDICTED	ACTUAL
Grating	NONE	NONE	Obspar update status	NONE	UPDATED
Data mode	FAINT	FAINT	On-chip summing requested	N	N
Observation mode	POINTING	POINTING	Subarray requested	NONE	NONE
Pointing RA	134.960290	134.9457604233814	Alternating exposures requested	N	N
Pointing Dec	27.745114	27.76916981242648	Primary exposure time	0.000000	3
Pointing Roll	87.328971	87.4923689078537			
SIM focus pos (mm)	-0.684267	-0.6828225247311905			
SIM defocus (mm)	0	0.001444936568705701			
SIM translation stage pos (mm)	-190.132523	-190.1400660498719			
SIM translation stage offset (mm)	0	0.00754346686406393			
Observation start time	220357795.184000	220356962.88642			
Observation start date	2004-12-25T10:28:51	2004-12-25T10:16:02			
Observation end time	220365075.184000	220365209.01179			
Observation end date	2004-12-25T12:30:11	2004-12-25T12:33:29			
Read mode	TIMED	TIMED			

2.3 Aspect



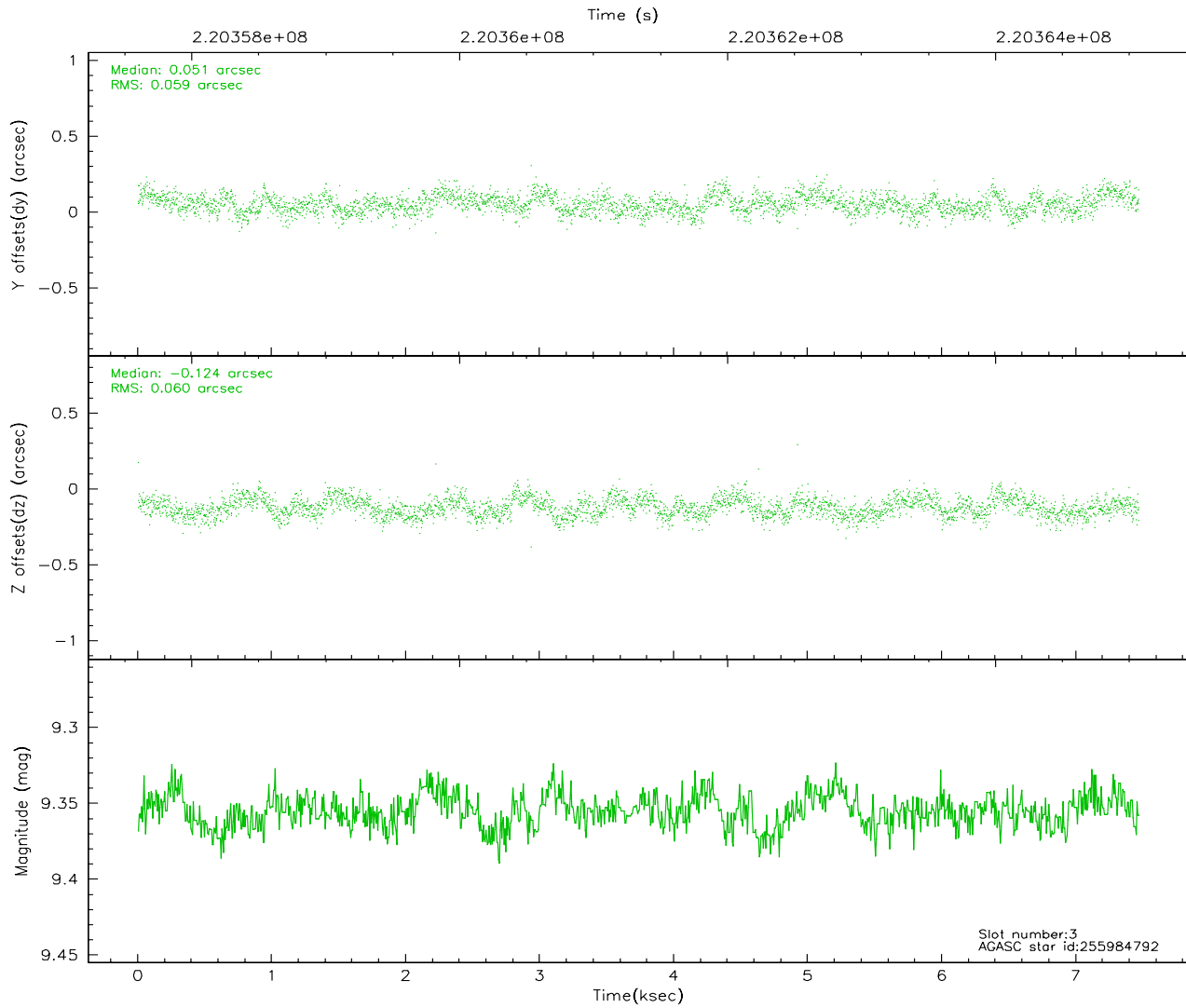
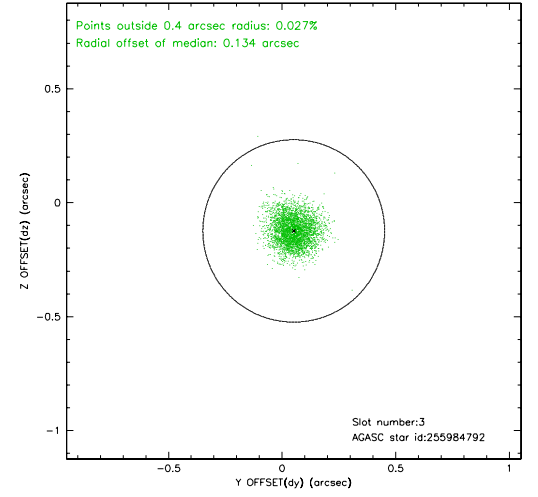
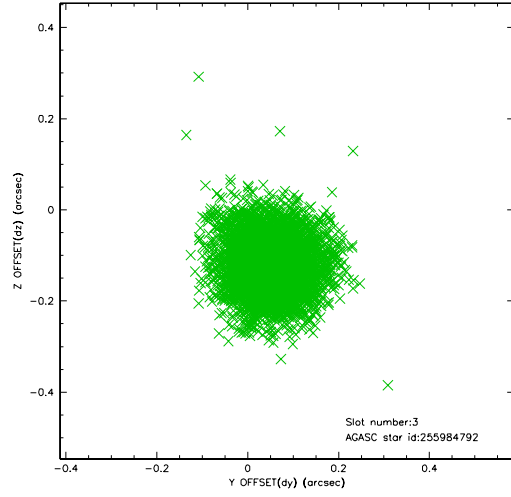


Slot Statistics

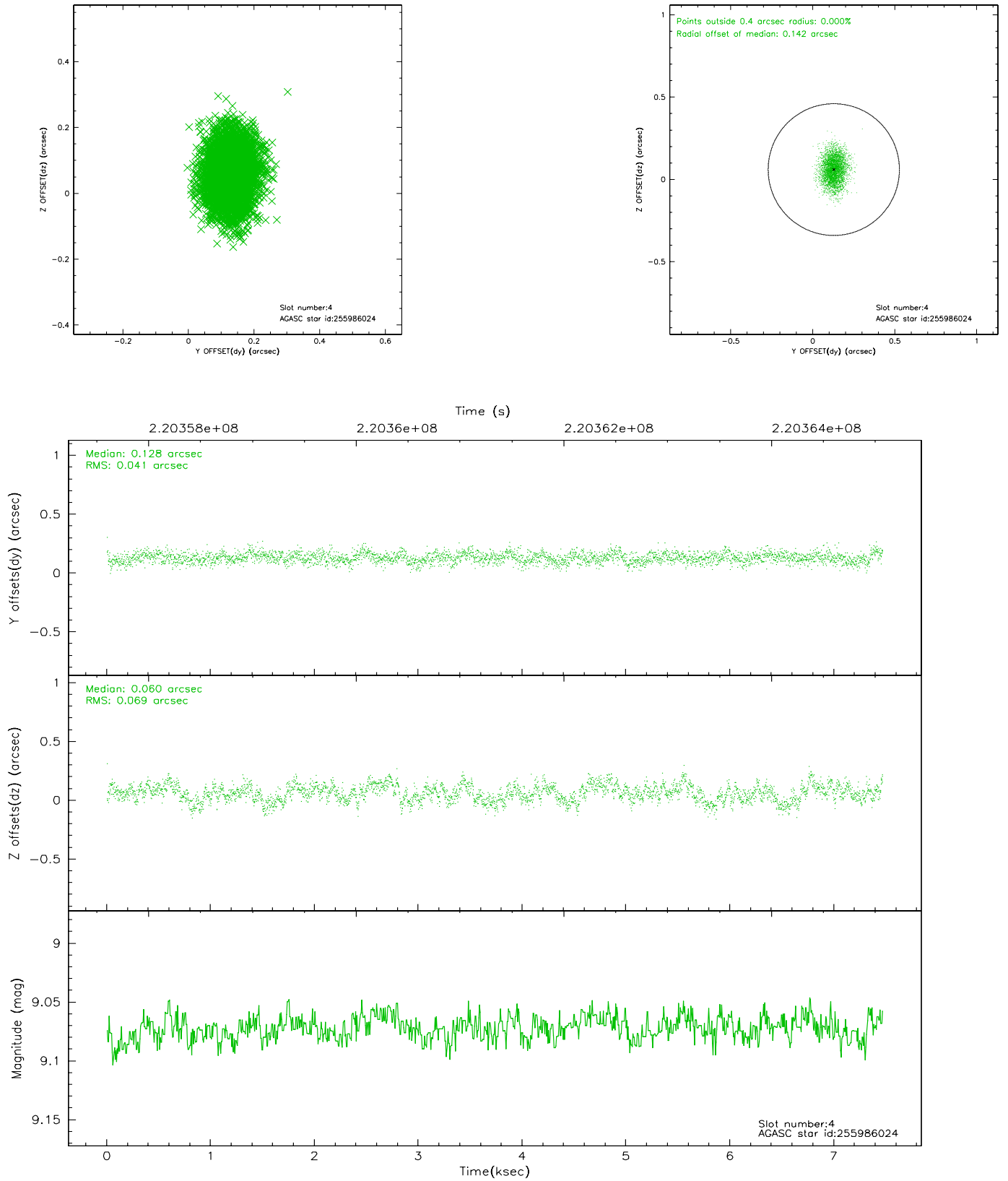
slot	status	id	mag	n_pts	med_dy	med_dz	dr1	dr2	ra	dec	mean_y	mean_z
0	FID	ACIS-S-1	7.19	1822	0.004	-0.007	0.006	0.010	0.000000	0.000000	935.19	-1726.98
1	FID	ACIS-S-4	7.21	1822	0.053	0.007	0.006	0.010	0.000000	0.000000	2153.05	176.42
2	FID	ACIS-S-5	7.23	1822	-0.083	0.012	0.005	0.010	0.000000	0.000000	-1812.81	170.84
3	GUIDE	255984792	9.36	3643	0.051	-0.124	0.089	0.143	134.698273	27.233445	-1878.29	752.09
4	GUIDE	255986024	9.07	3644	0.128	0.060	0.085	0.140	135.247679	27.336469	-1425.97	-986.05
5	GUIDE	256376904	8.93	3639	-0.139	0.108	0.071	0.118	135.436580	27.927189	727.78	-1482.19
6	GUIDE	256381208	9.29	3643	0.037	-0.062	0.081	0.136	134.758821	27.635369	-424.15	623.40
7	GUIDE	256389120	6.41	3642	-0.077	0.012	0.076	0.115	135.453491	27.902591	642.13	-1539.84

2.4 Star Slots

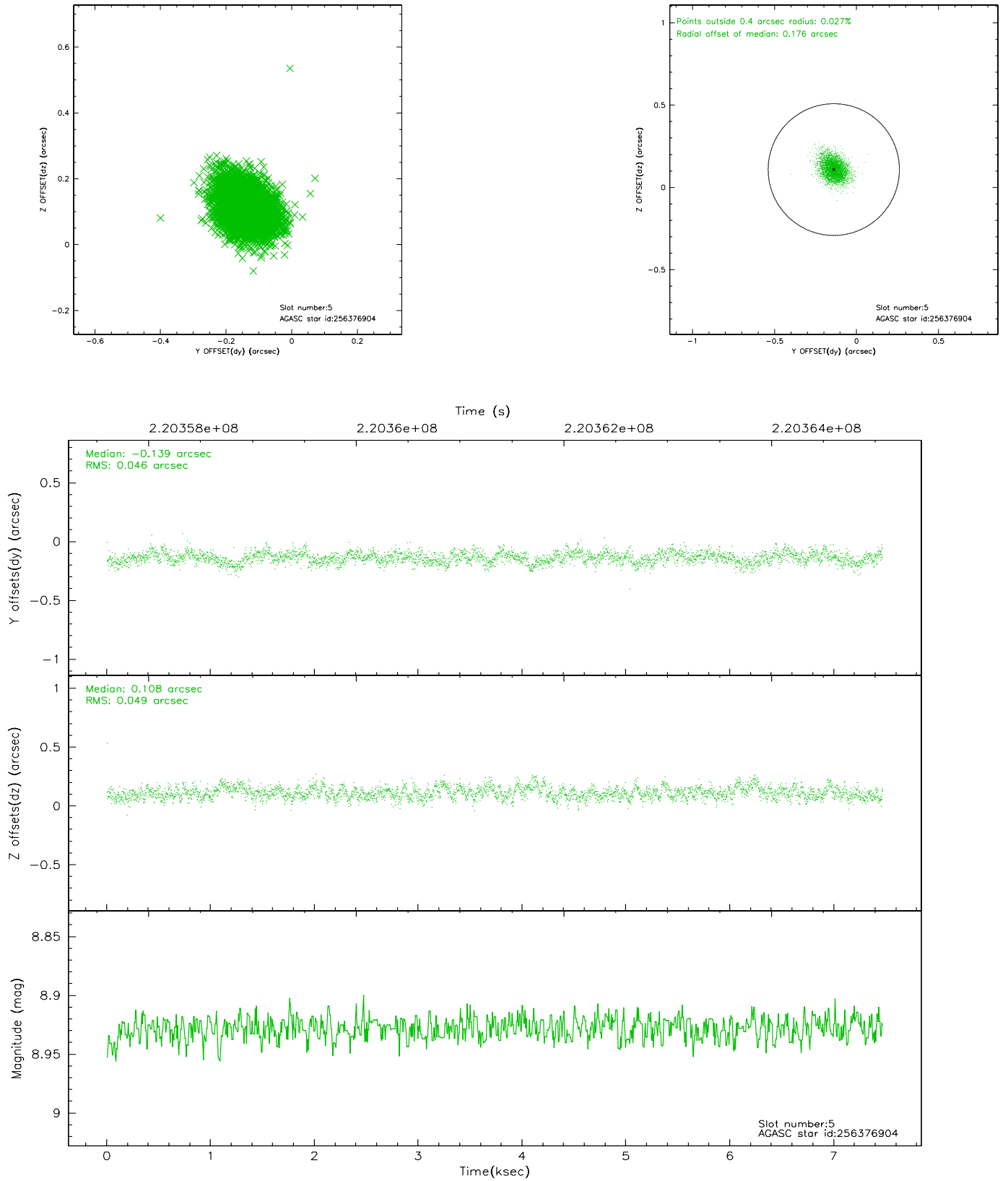
2.4.1 Slot 3



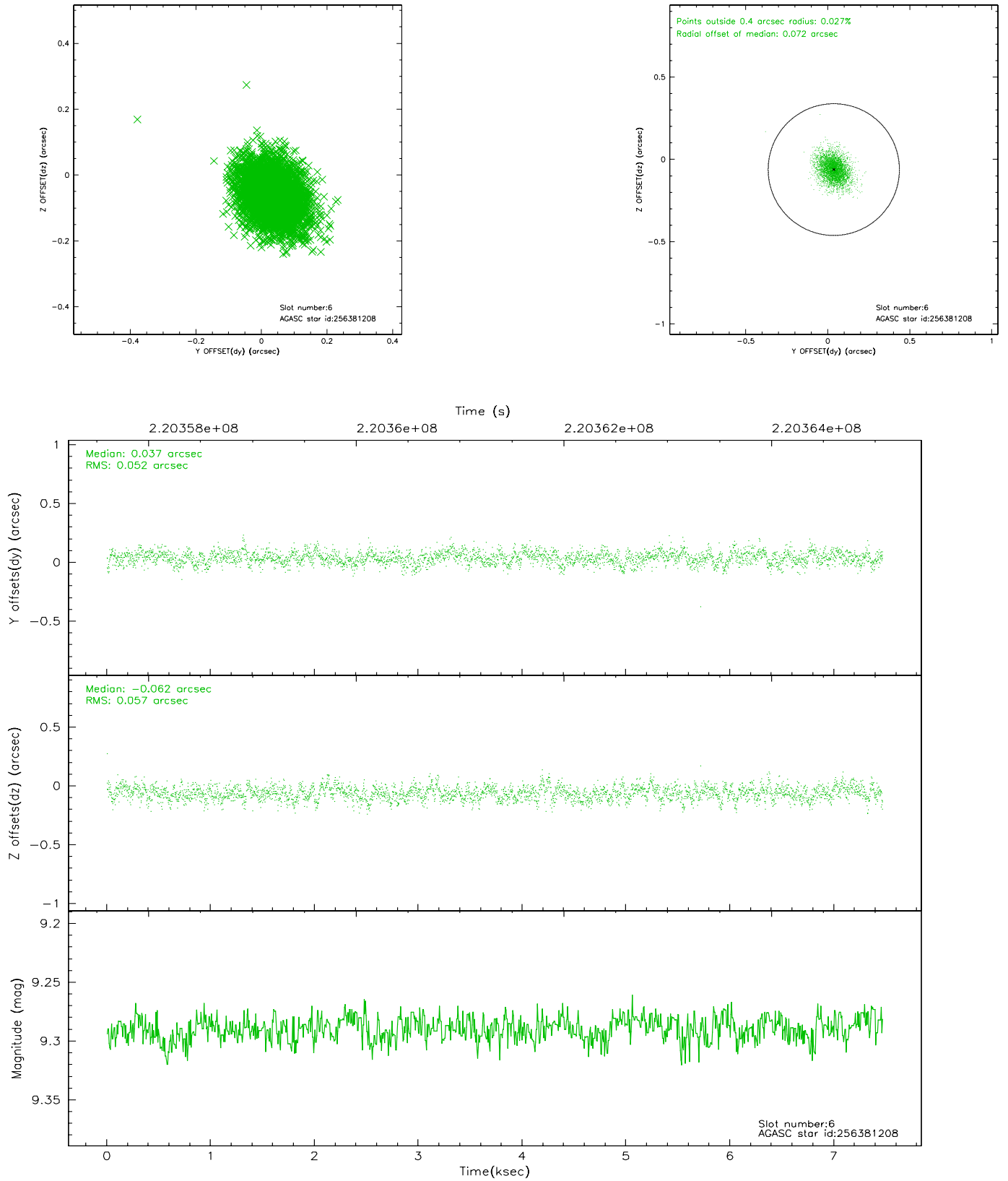
2.4.2 Slot 4



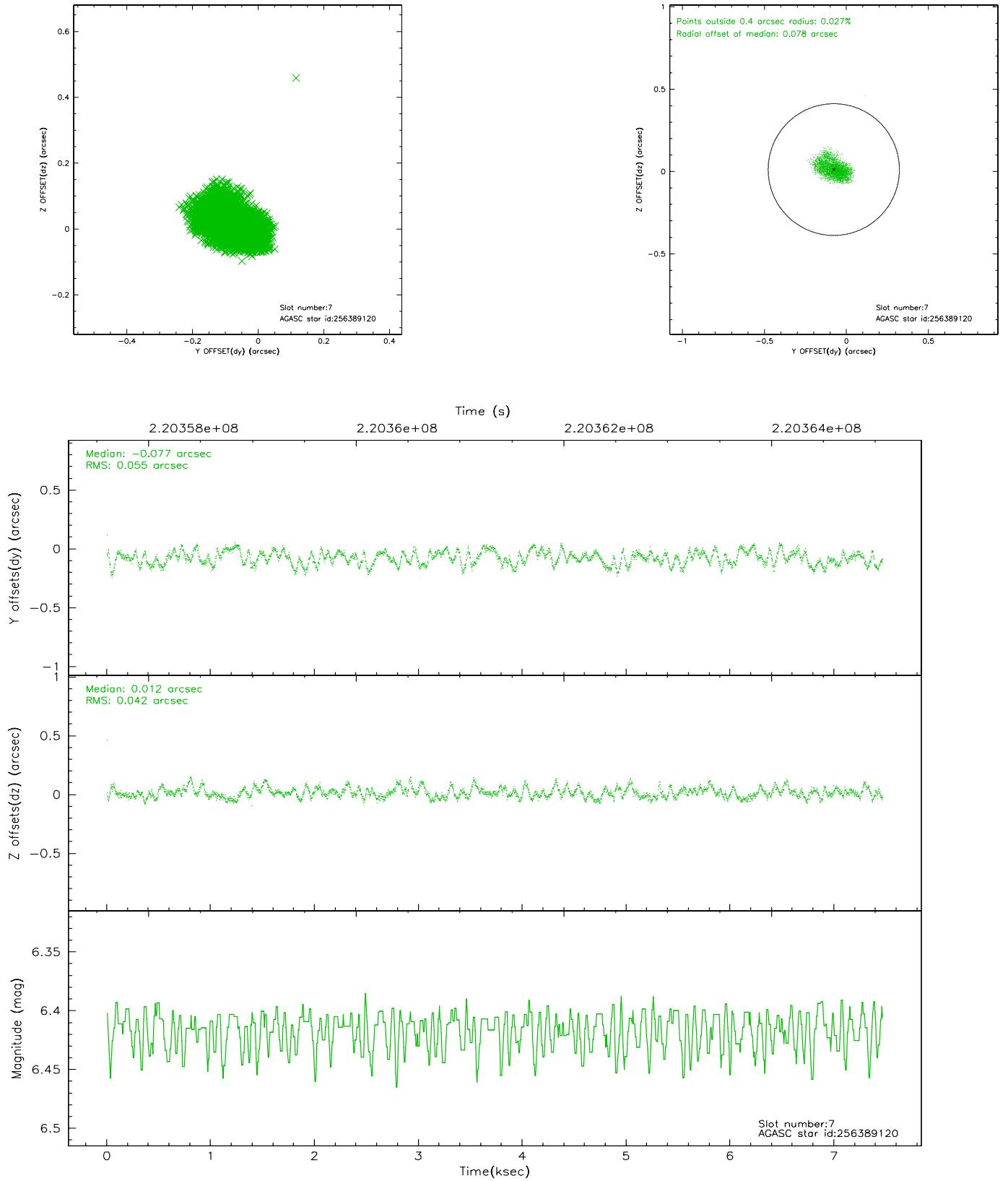
2.4.3 Slot 5



2.4.4 Slot 6

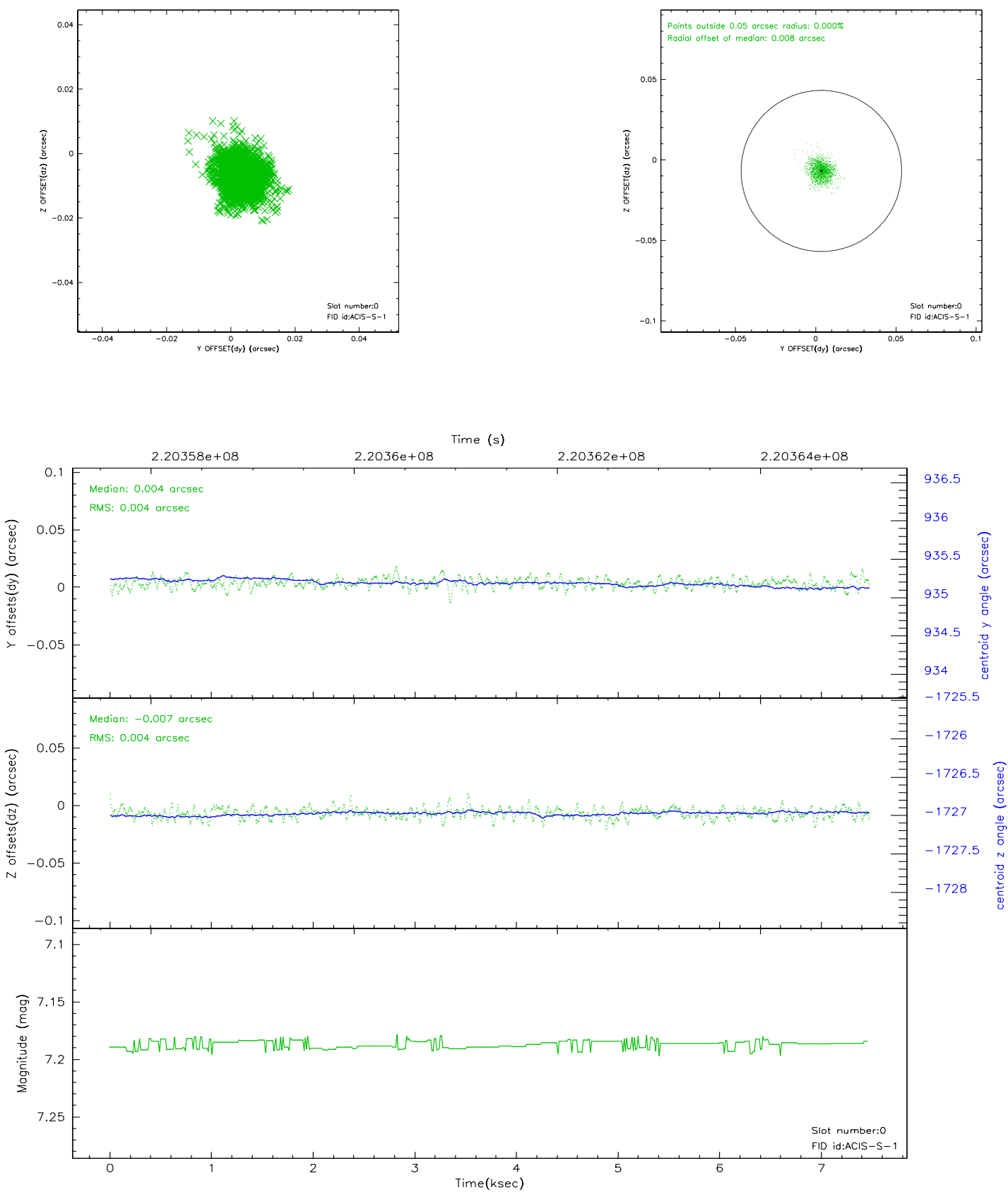


2.4.5 Slot 7

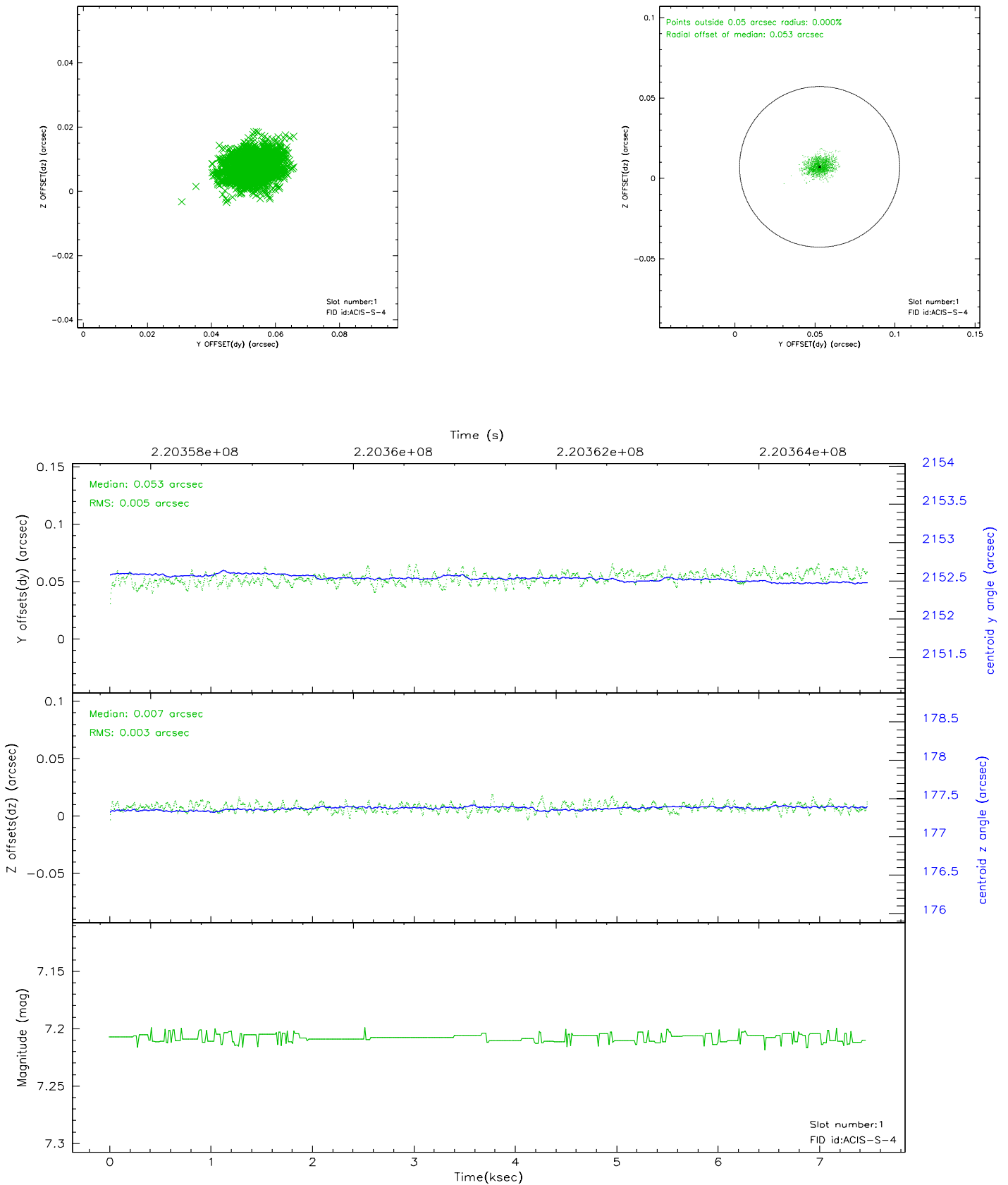


2.5 FID Slots

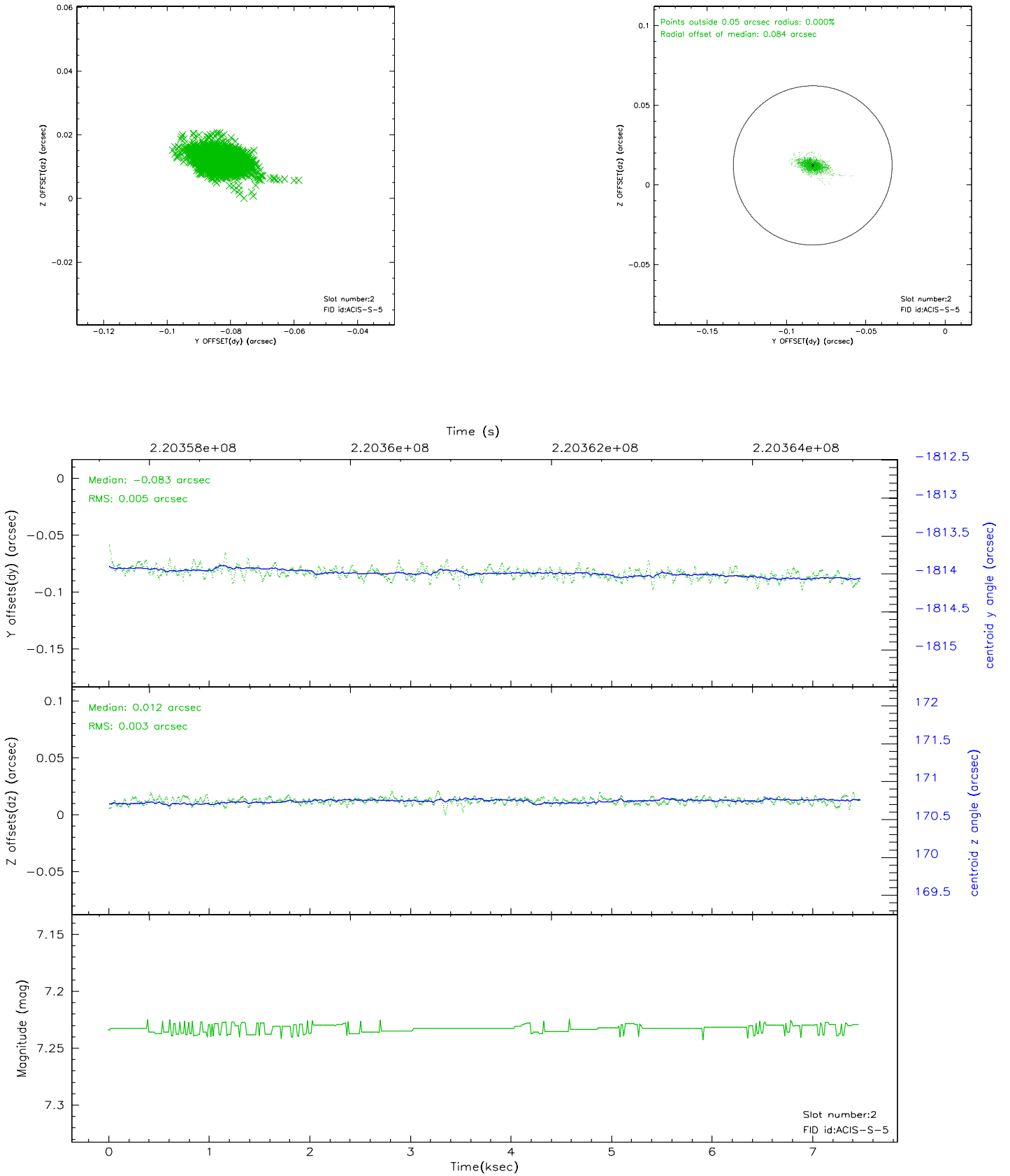
2.5.1 Slot 0



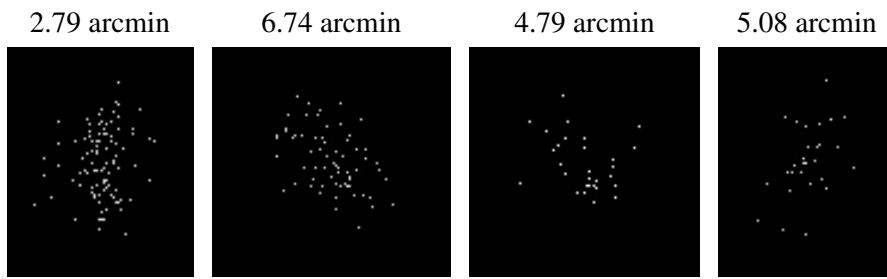
2.5.2 Slot 1



2.5.3 Slot 2



3 Point Sources



A Summary

A.1 Status

V&V Scientist	Beth Sundheim
V&V Date (YYYY-MM-DD)	2006.04.07
V&V Edition	1
V&V Disposition and Status	OK
V&V Charge Time	7.464

A.2 Comments