

V&V Reference Report

L2 ASCDS Version : 7.6.7

Observation 5665 - L2 Version 002
Chandra X-Ray Center

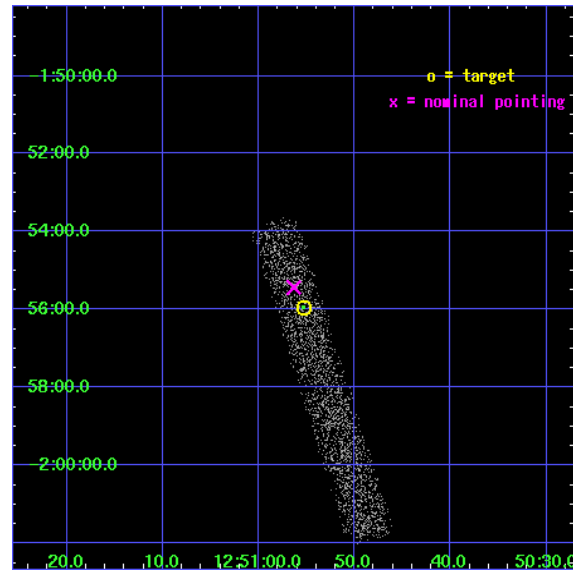
L2 Processing Date: Feb 25 2006

Contents

1	Front	2
2	OBI	3
2.1	OBI	3
2.1.1	Images	3
2.1.2	Bias	3
2.1.3	Parameters	4
2.1.4	Events	4
2.2	Compared Parameters	5
2.3	Aspect	6
2.4	Star Slots	9
2.4.1	Slot 3	9
2.4.2	Slot 4	10
2.4.3	Slot 5	11
2.4.4	Slot 6	12
2.4.5	Slot 7	13
2.5	FID Slots	14
2.5.1	Slot 0	14
2.5.2	Slot 1	15
2.5.3	Slot 2	16
3	Point Sources	17
A	Summary	18
A.1	Status	18
A.2	Comments	18

1 Front

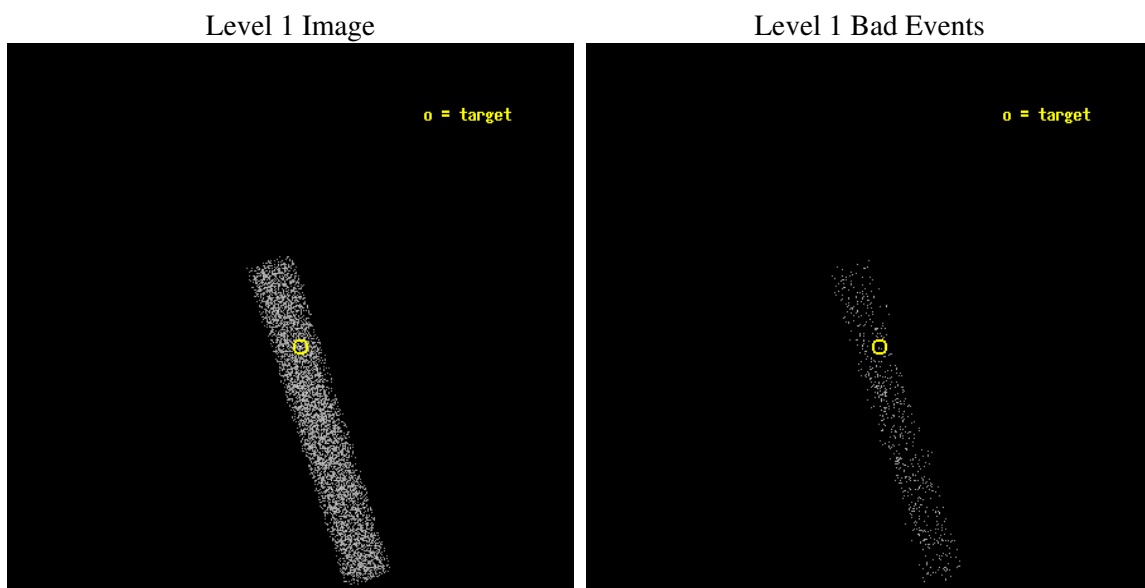
seq_num	701088
obs_id	5665
title	X-ray Properties of AGNs with Intermediate-mass Black Holes
observer	Dr. Luis Ho
object	SDSS J125055.28-015556.6
dtcycle	0
cycle	P
ra_targ	192.730417
dec_targ	-1.932389
ra_nom	192.73476438399
dec_nom	-1.9238740674983
roll_nom	72.477412844748
revision	2
ontime	5186.0000772774
livetime	4703.4283305618
ontime7	5186.0000772774
l2events	2846



2 OBI

2.1 OBI

2.1.1 Images



2.1.2 Bias

Chip 7



2.1.3 Parameters

obi_num	0
ascdsver	7.6.7
caldbver	3.2.1
date	2006-02-25T11:14:01
revision	2

sched_exp_time	5000.000000
ontime	5392.1046442091
ontime7	5392.1046442091
l1events	7108

2.1.4 Events

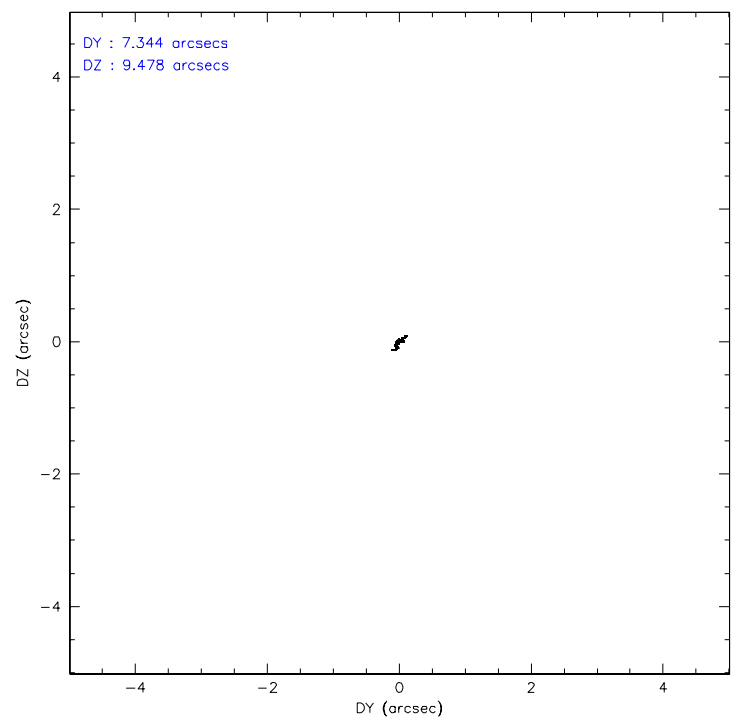
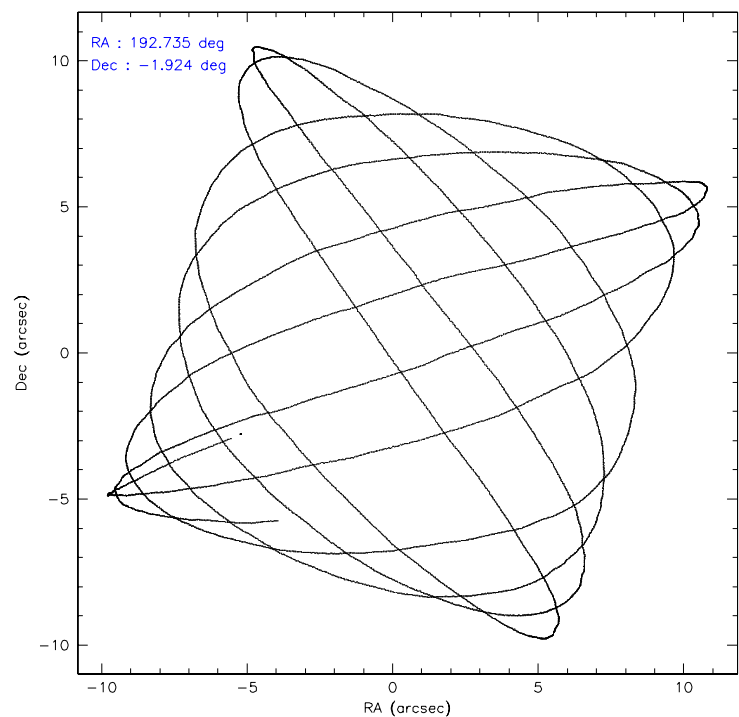
	ccd 7
level 1 events	7108
rejected events	4131
rejected %	58%

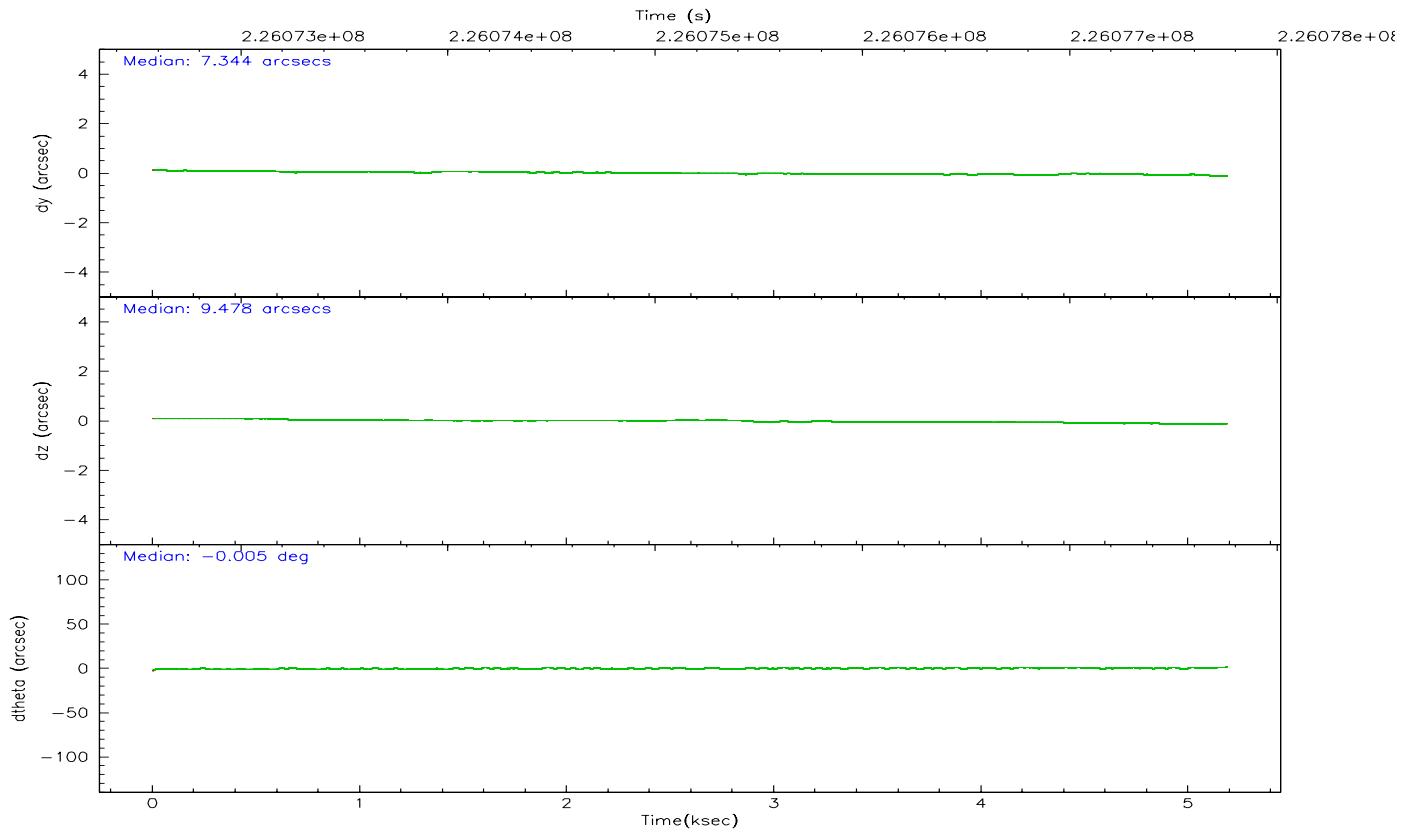
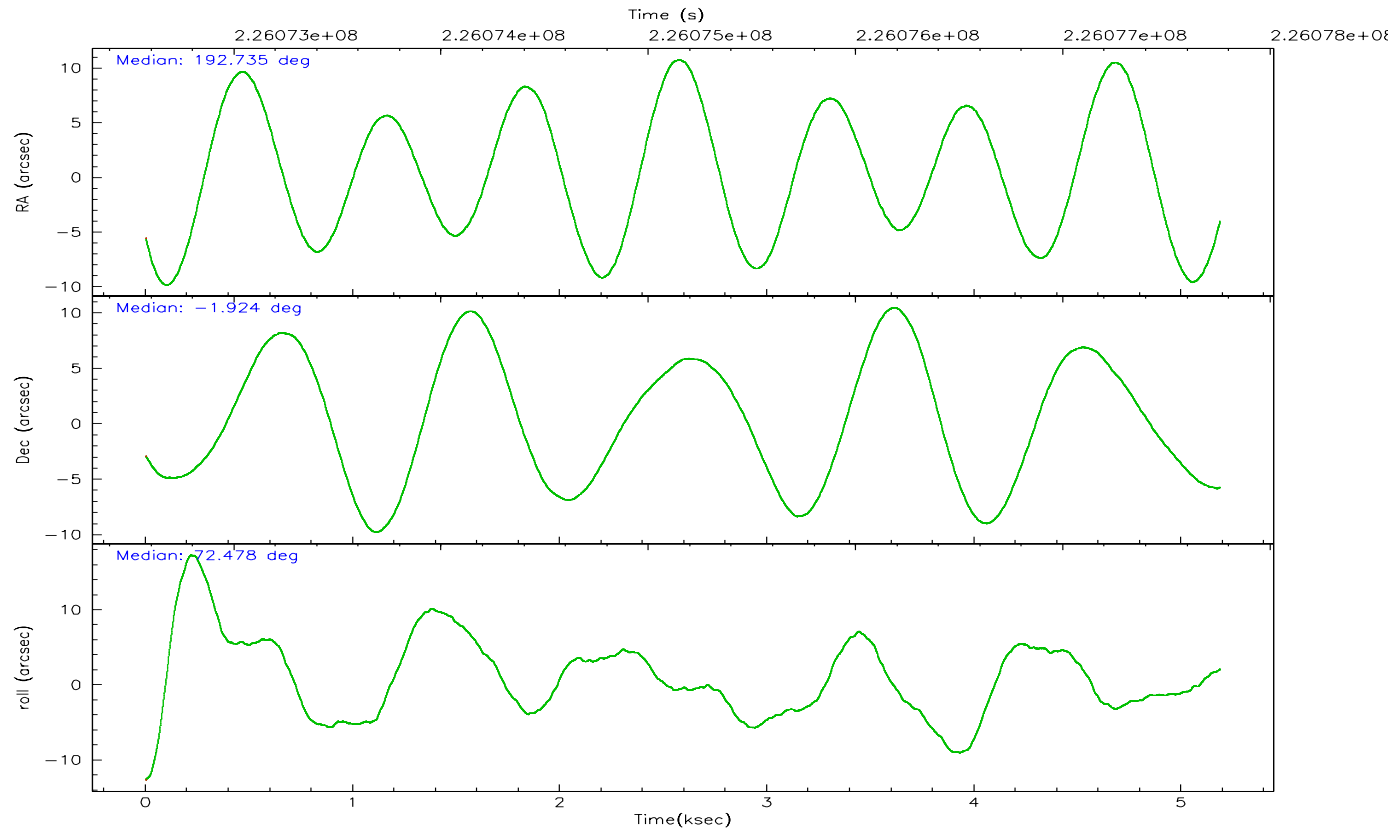
	ccd 7
grade 0 events	267
	3%
grade 1 events	10
	0%
grade 2 events	658
	9%
grade 3 events	339
	4%
grade 4 events	310
	4%
grade 5 events	477
	6%
grade 6 events	1522
	21%
grade 7 events	3525
	49%

2.2 Compared Parameters

Parameter	Planned	Actual	Parameter	Planned	Actual
Instrument	ACIS	ACIS	Obspar format version number	6	6
Detector	ACIS-7	ACIS-7	Obspar file type	PREDICTED	ACTUAL
Grating	NONE	NONE	Obspar update status	NONE	UPDATED
Data mode	FAINT	FAINT	On-chip summing requested	N	N
Observation mode	POINTING	POINTING	Subarray requested	1/8	1/8
Pointing RA	192.741154	192.7347643839915	Subarray start row	0	449
Pointing Dec	-1.950331	-1.923874067498295	Subarray row count	1024	128
Pointing Roll	72.321004	72.4774128447476	Alternating exposures requested	N	N
SIM focus pos (mm)	-0.684267	-0.6828225247311905	Primary exposure time	0.000000	0.4
SIM defocus (mm)	0	0.001444936568705701			
SIM translation stage pos (mm)	-190.132523	-190.1400660498719			
SIM translation stage offset (mm)	0	0.00754346686406393			
Observation start time	226072766.184000	226072039.24456			
Observation start date	2005-03-01T13:58:22	2005-03-01T13:47:19			
Observation end time	226077766.184000	226078144.14484			
Observation end date	2005-03-01T15:21:42	2005-03-01T15:29:04			
Read mode	TIMED	TIMED			

2.3 Aspect



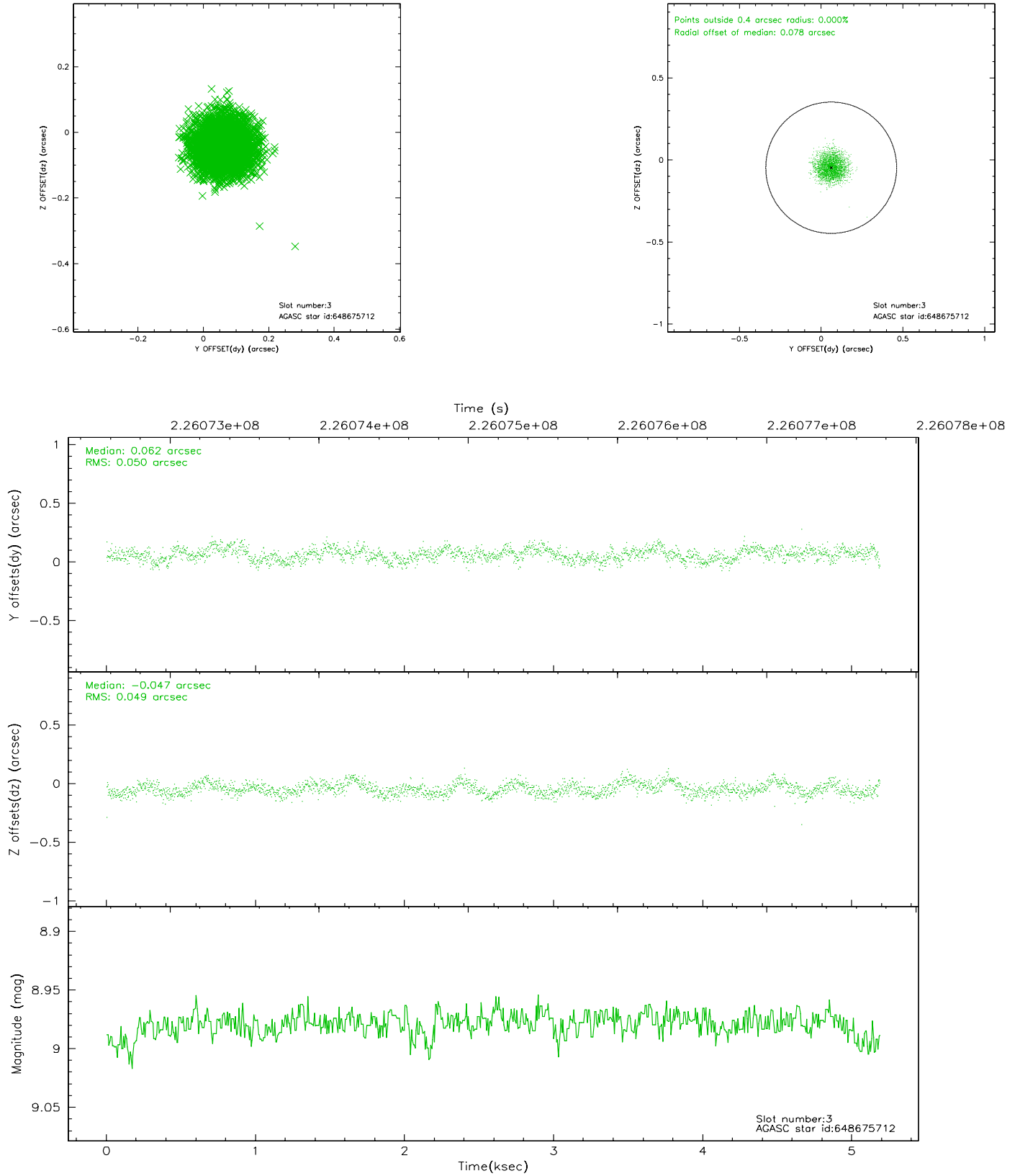


Slot Statistics

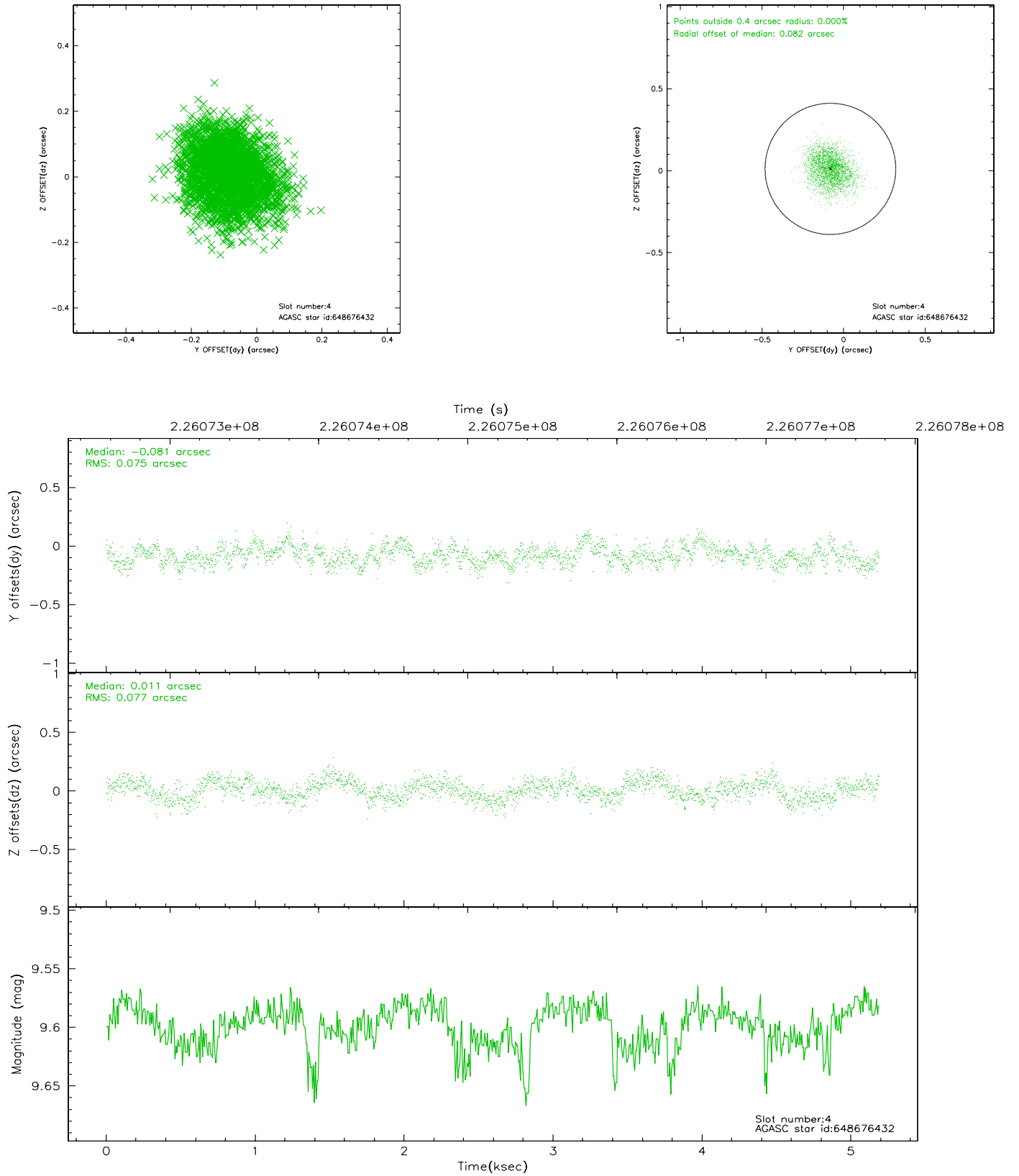
slot	status	id	mag	n_pts	med_dy	med_dz	dr1	dr2	ra	dec	mean_y	mean_z
0	FID	ACIS-S-2	7.10	1266	-0.035	-0.018	0.007	0.011	0.000000	0.000000	-760.12	-1730.73
1	FID	ACIS-S-4	7.20	1266	0.064	0.022	0.005	0.008	0.000000	0.000000	2152.70	176.63
2	FID	ACIS-S-5	7.24	1265	-0.060	0.005	0.006	0.011	0.000000	0.000000	-1811.51	171.55
3	GUIDE	648675712	8.98	2531	0.062	-0.047	0.076	0.118	192.426039	-2.289299	-1506.58	709.32
4	GUIDE	648676432	9.60	2530	-0.081	0.011	0.116	0.181	192.483195	-1.532926	1149.02	1341.30
5	GUIDE	648809152	8.39	2530	-0.175	0.127	0.065	0.104	192.599458	-1.825045	275.60	623.24
6	GUIDE	648679440	10.38	2530	0.157	-0.018	0.164	0.262	192.498898	-2.006934	-458.19	768.62
7	GUIDE	648683560	10.27	2515	0.037	-0.072	0.142	0.224	192.355606	-1.415190	1414.13	1907.49

2.4 Star Slots

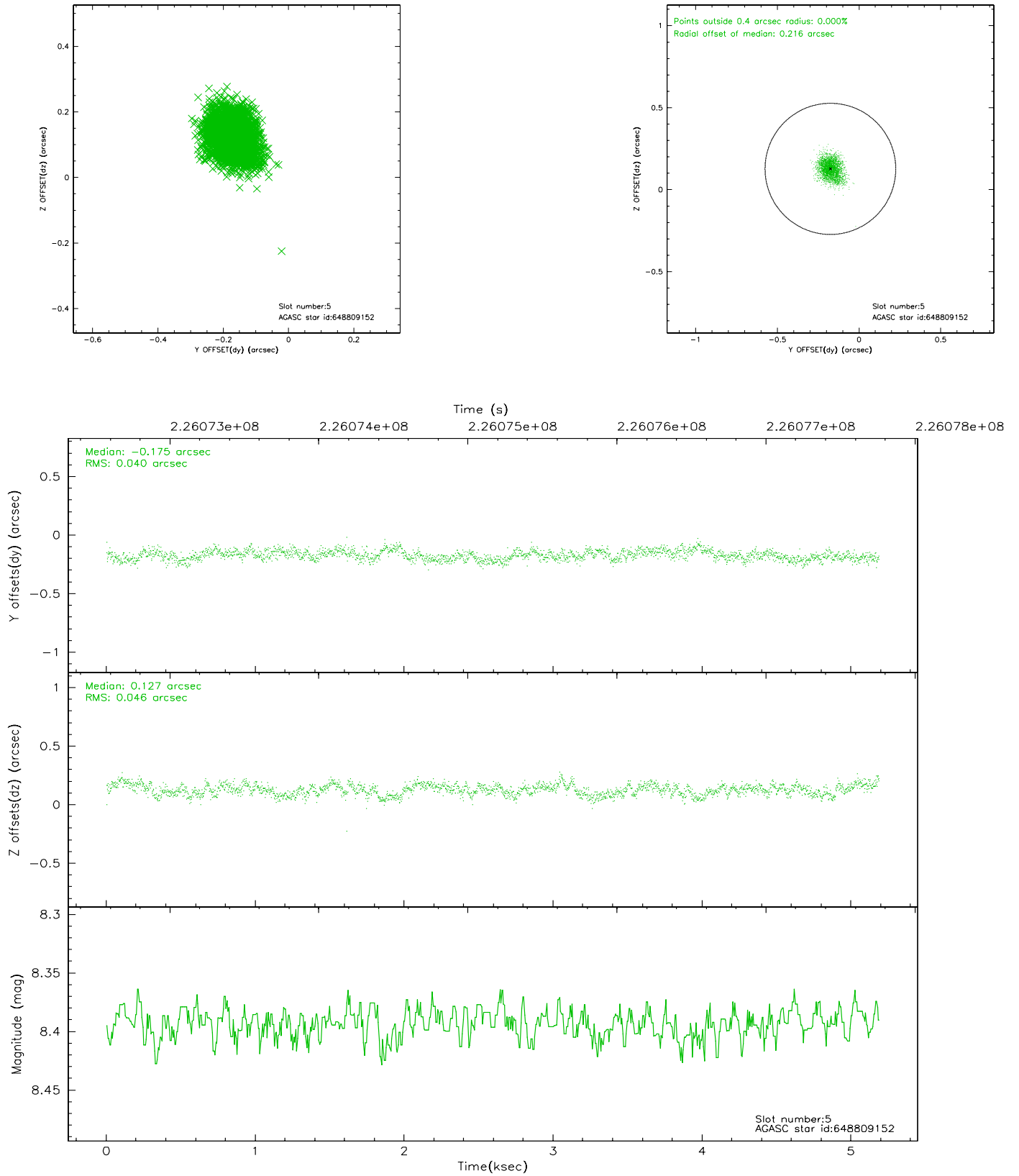
2.4.1 Slot 3



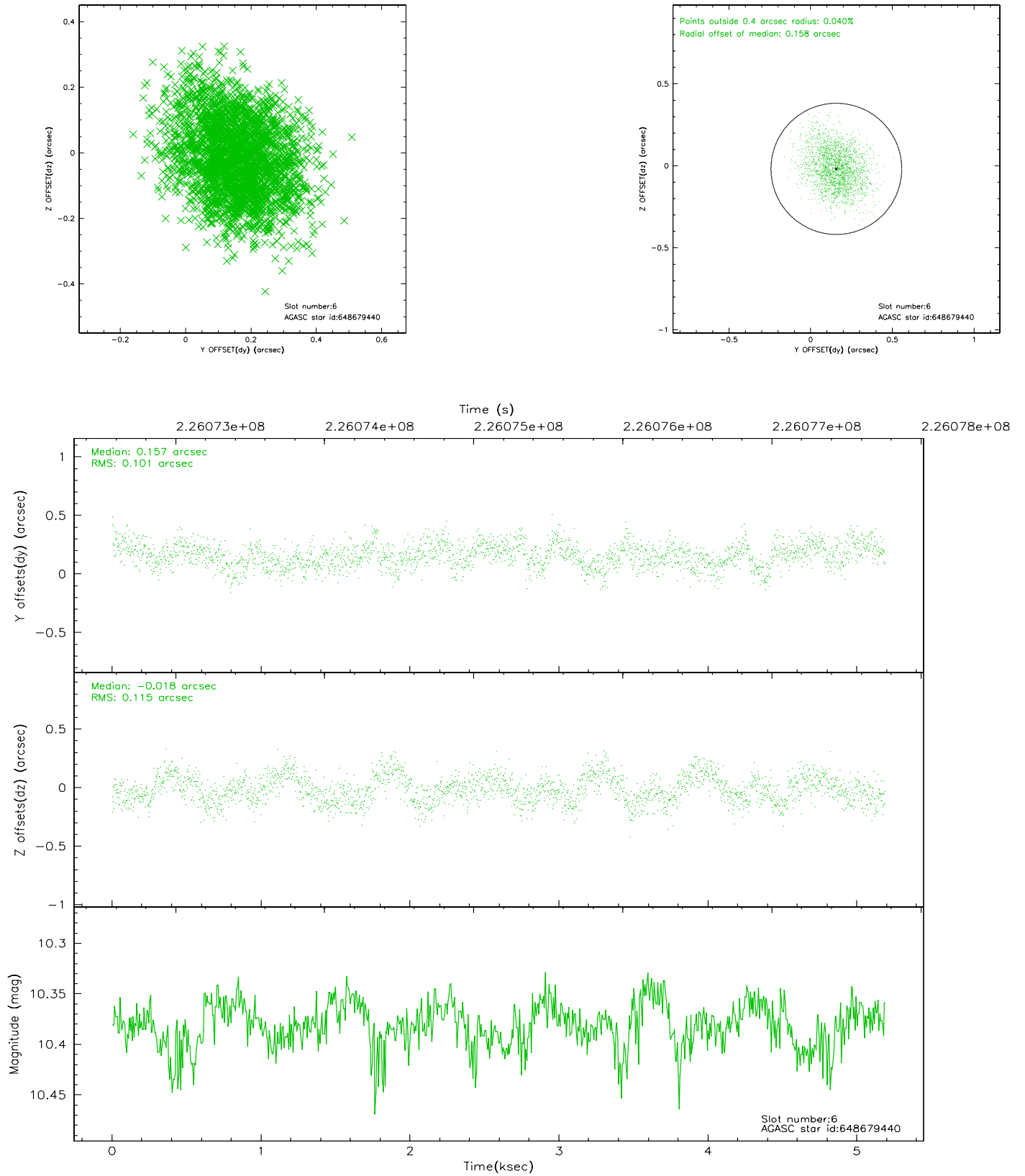
2.4.2 Slot 4



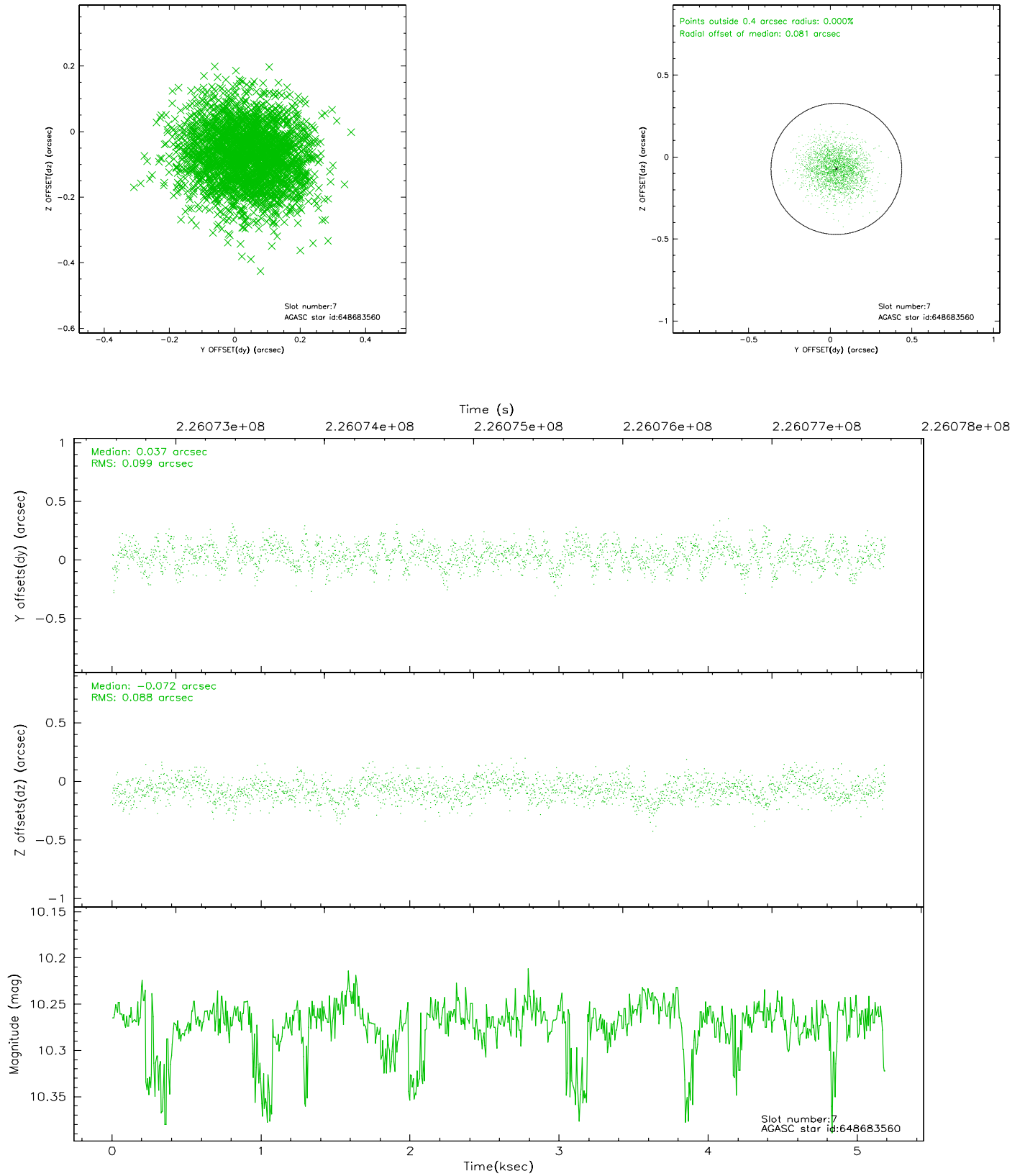
2.4.3 Slot 5



2.4.4 Slot 6

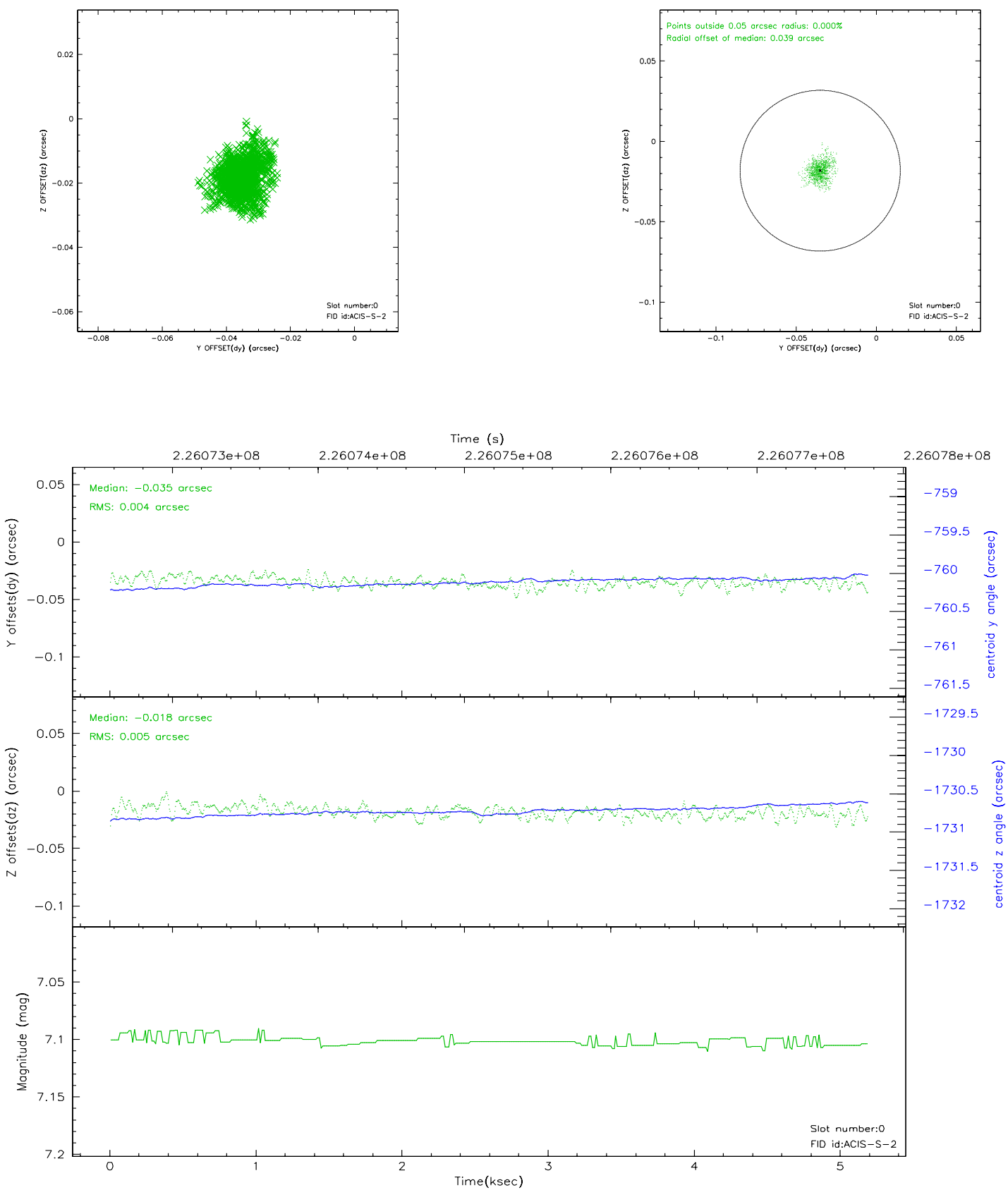


2.4.5 Slot 7

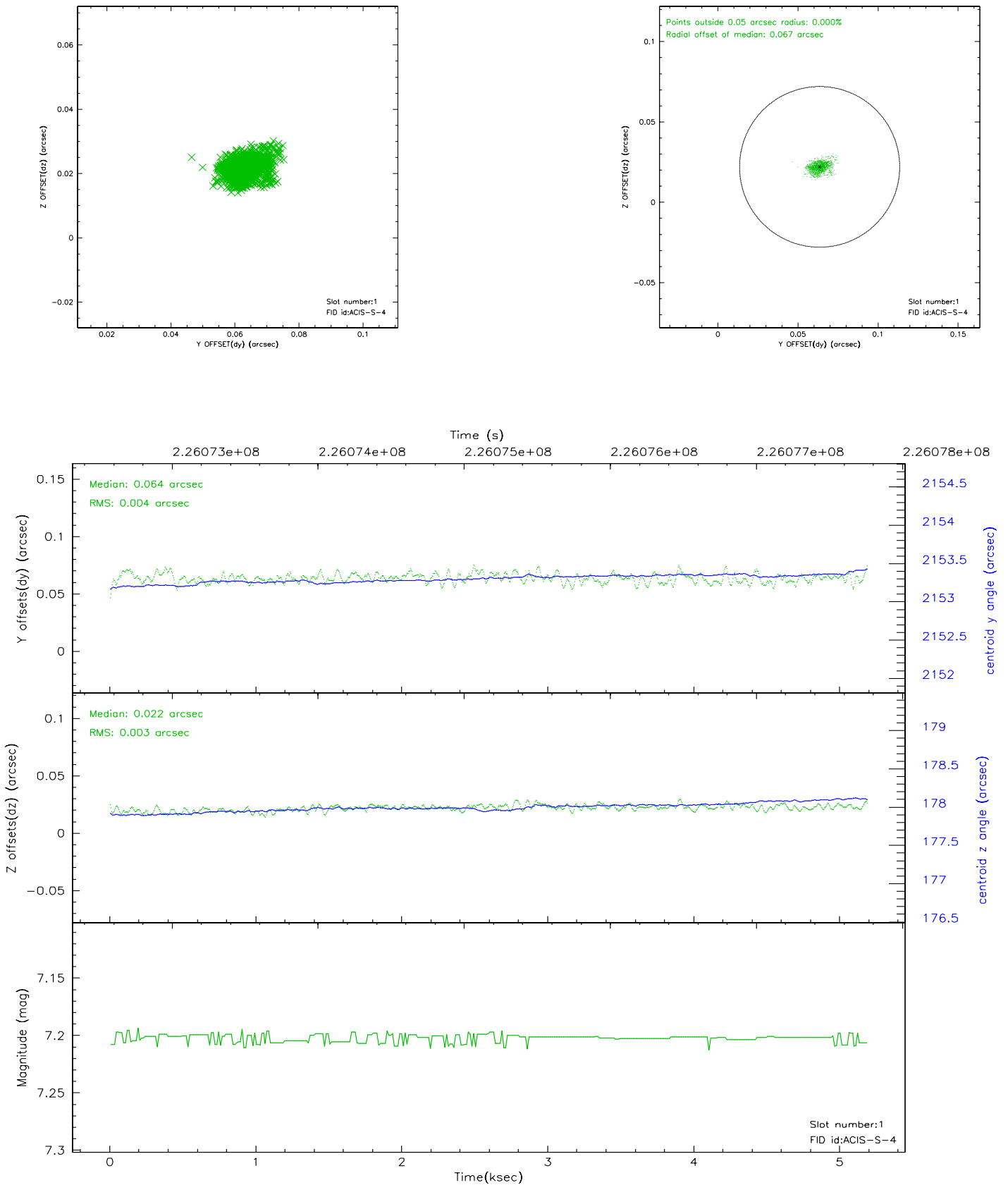


2.5 FID Slots

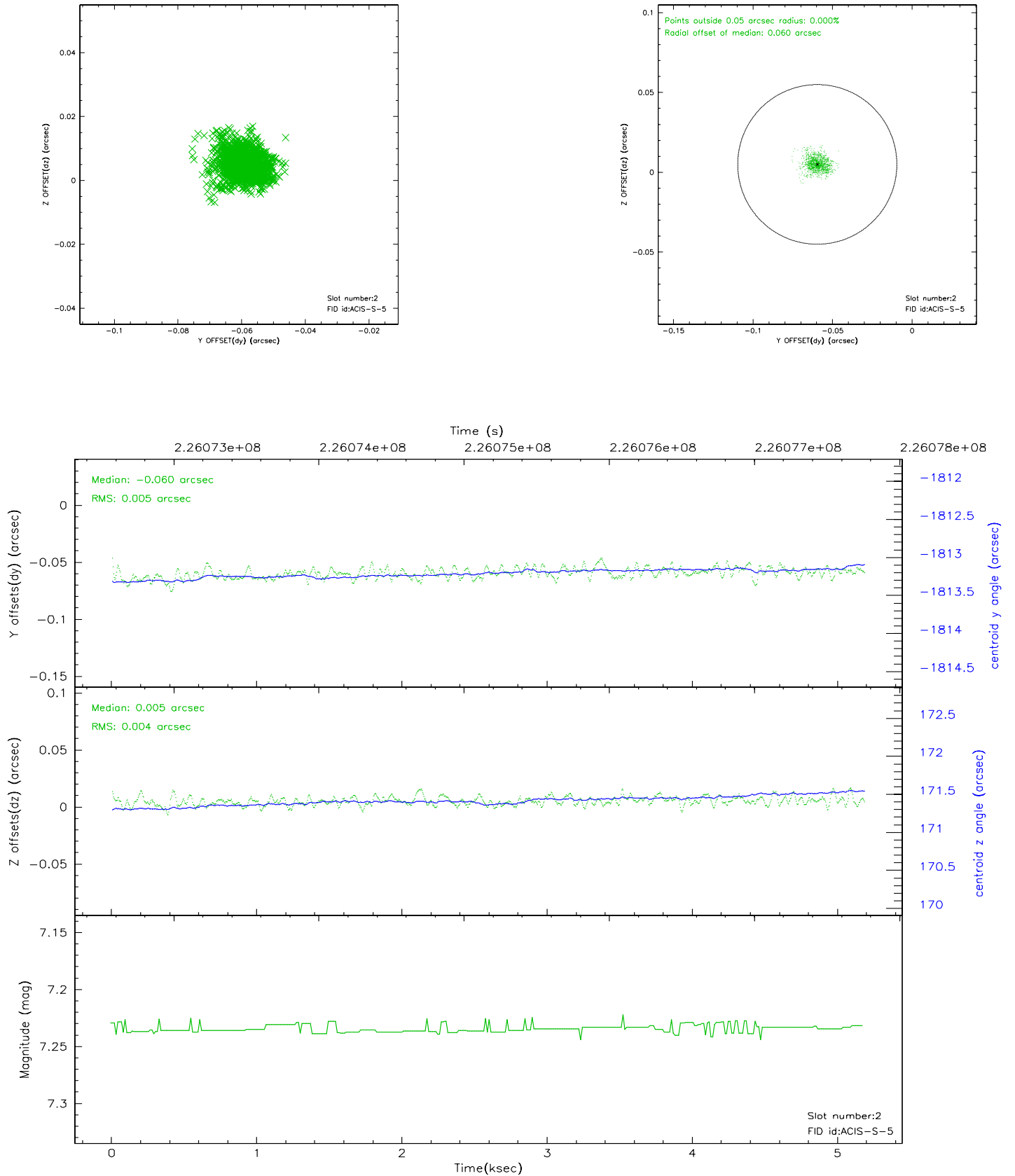
2.5.1 Slot 0



2.5.2 Slot 1



2.5.3 Slot 2



3 Point Sources

A Summary

A.1 Status

V&V Scientist	Beth Sundheim
V&V Date (YYYY-MM-DD)	2006.02.27
V&V Edition	1
V&V Disposition and Status	OK
V&V Charge Time	5.186

A.2 Comments