

# V&V Reference Report

## L2 ASCDS Version : 7.6.7

Observation 5661 - L2 Version 002  
Chandra X-Ray Center

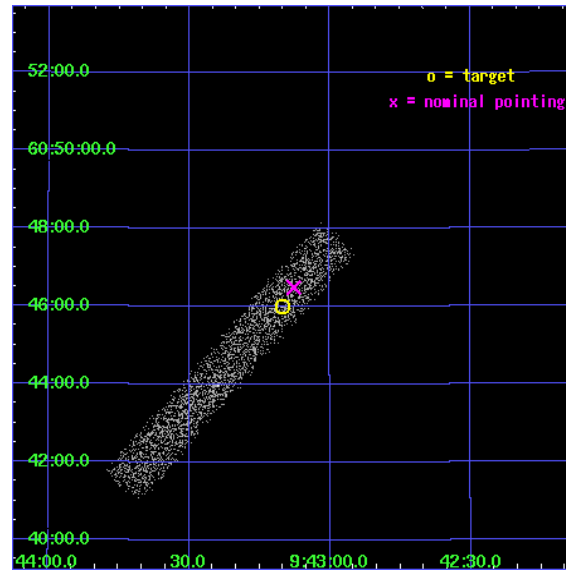
L2 Processing Date: Feb 15 2006

## Contents

<b>1</b>	<b>Front</b>	<b>2</b>
<b>2</b>	<b>OBI</b>	<b>3</b>
2.1	OBI . . . . .	3
2.1.1	Images . . . . .	3
2.1.2	Bias . . . . .	3
2.1.3	Parameters . . . . .	4
2.1.4	Events . . . . .	4
2.2	Compared Parameters . . . . .	5
2.3	Aspect . . . . .	6
2.4	Star Slots . . . . .	9
2.4.1	Slot 3 . . . . .	9
2.4.2	Slot 4 . . . . .	10
2.4.3	Slot 5 . . . . .	11
2.4.4	Slot 6 . . . . .	12
2.4.5	Slot 7 . . . . .	13
2.5	FID Slots . . . . .	14
2.5.1	Slot 0 . . . . .	14
2.5.2	Slot 1 . . . . .	15
2.5.3	Slot 2 . . . . .	16
<b>3</b>	<b>Point Sources</b>	<b>17</b>
<b>A</b>	<b>Summary</b>	<b>18</b>
A.1	Status . . . . .	18
A.2	Comments . . . . .	18

# 1 Front

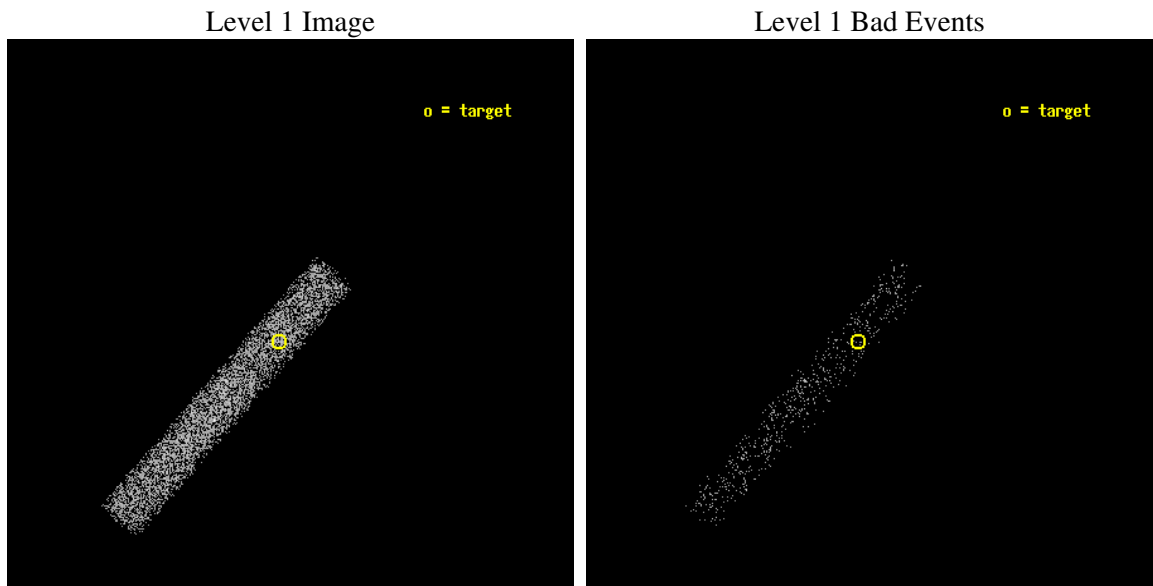
seq_num	701084
obs_id	5661
title	X-ray Properties of AGNs with Intermediate-mass Black Holes
observer	Dr. Luis Ho
object	SDSS J094310.12+604559.1
dtcycle	0
cycle	P
ra_targ	145.792083
dec_targ	60.766417
ra_nom	145.78200307229
dec_nom	60.774618123487
roll_nom	131.1577114298
revision	2
ontime	5546.8000826538
livetime	5030.6548908523
ontime7	5546.8000826538
l2events	3544



## 2 OBI

### 2.1 OBI

#### 2.1.1 Images



#### 2.1.2 Bias

Chip 7



### 2.1.3 Parameters

obi_num	0
ascdsver	7.6.7
caldsver	3.2.1
date	2006-02-16T01:35:46
revision	2

sched_exp_time	5359.000000
ontime	6507.4862832725
ontime7	6507.4862832725
l1events	8698

### 2.1.4 Events

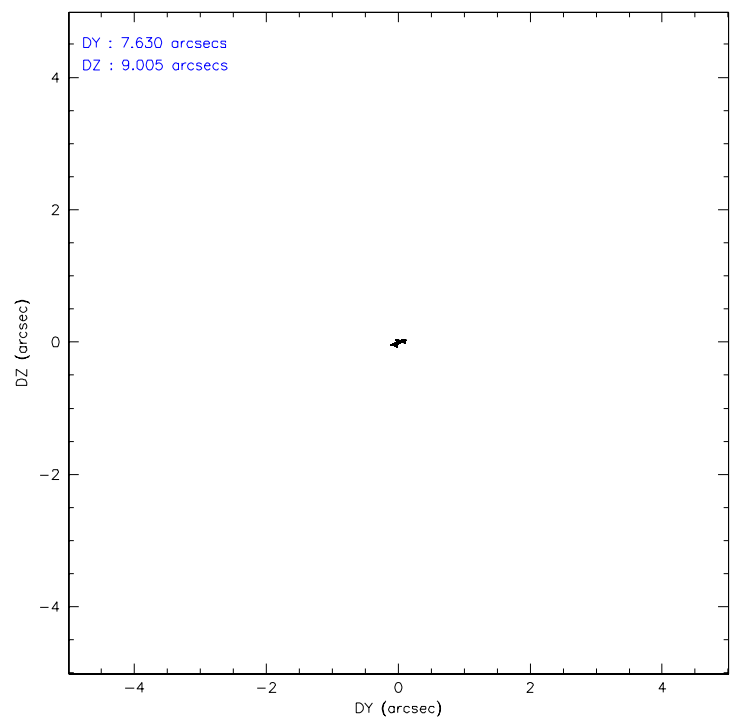
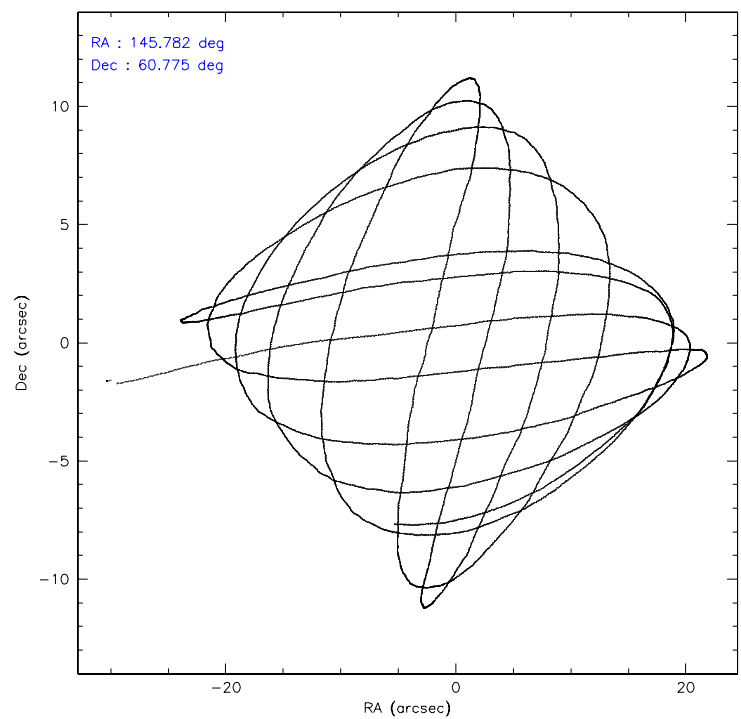
	<b>ccd 7</b>
level 1 events	8698
rejected events	5015
rejected %	57%

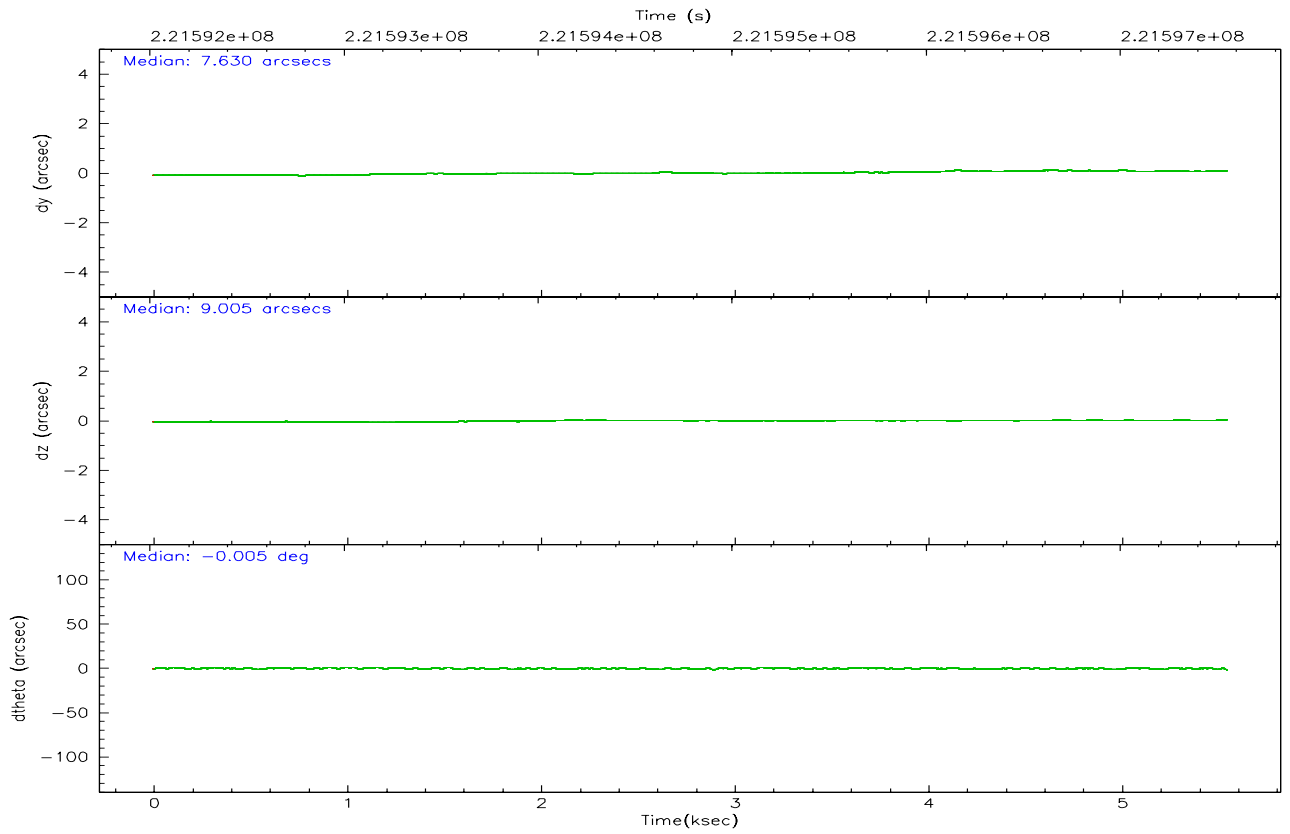
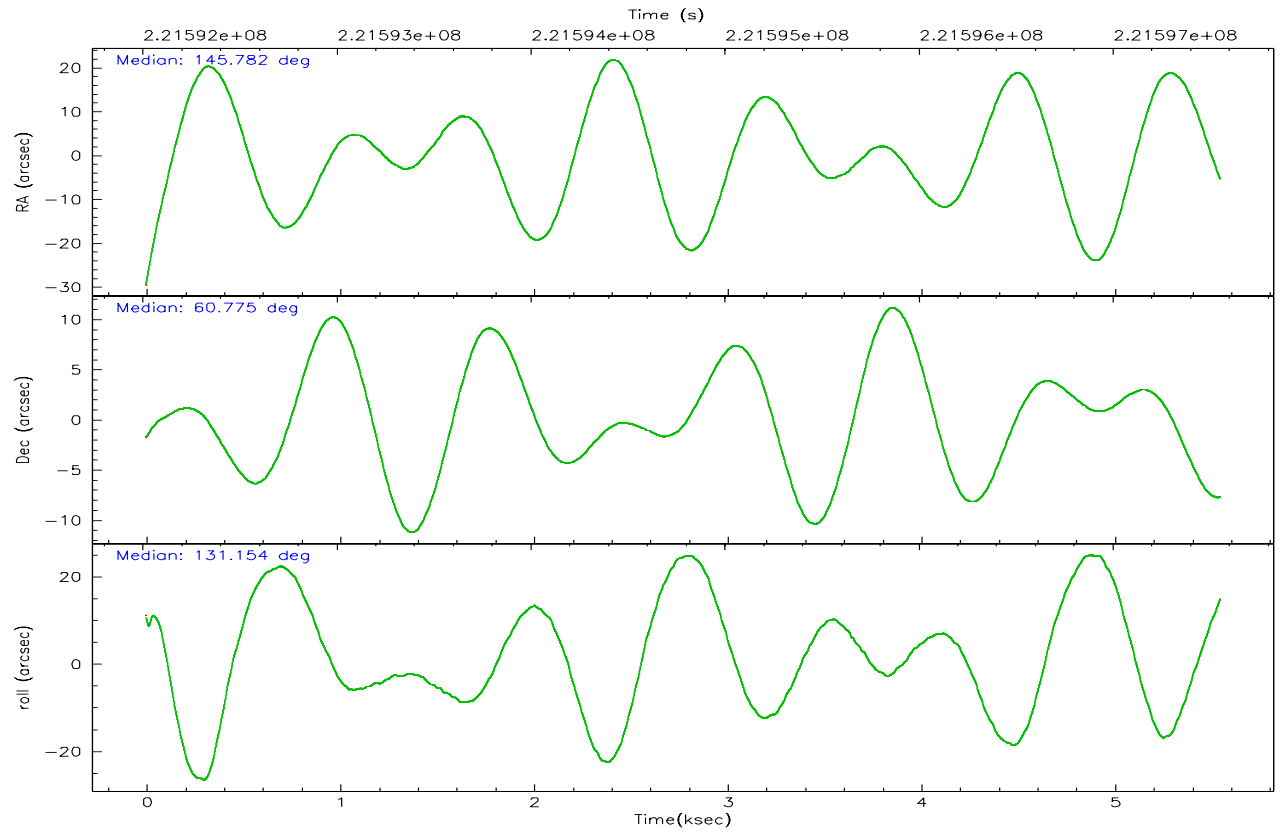
	<b>ccd 7</b>
grade 0 events	344
	3%
grade 1 events	6
	0%
grade 2 events	914
	10%
grade 3 events	427
	4%
grade 4 events	369
	4%
grade 5 events	552
	6%
grade 6 events	2192
	25%
grade 7 events	3894
	44%

## 2.2 Compared Parameters

Parameter	Planned	Actual	Parameter	Planned	Actual
Instrument	ACIS	ACIS	Obspar format version number	6	6
Detector	ACIS-7	ACIS-7	Obspar file type	PREDICTED	ACTUAL
Grating	NONE	NONE	Obspar update status	NONE	UPDATED
Data mode	FAINT	FAINT	On-chip summing requested	N	N
Observation mode	POINTING	POINTING	Subarray requested	1/8	1/8
Pointing RA	145.834879	145.7820030722887	Subarray start row	0	449
Pointing Dec	60.766248	60.77461812348656	Subarray row count	1024	128
Pointing Roll	130.954982	131.1577114298043	Alternating exposures requested	N	N
SIM focus pos (mm)	-0.684267	-0.6828225247311905	Primary exposure time	0.000000	0.4
SIM defocus (mm)	0	0.001444936568705701			
SIM translation stage pos (mm)	-190.132523	-190.1425803651734			
SIM translation stage offset (mm)	0	0.01005778216563158			
Observation start time	221592197.184000	221591050.12953			
Observation start date	2005-01-08T17:22:13	2005-01-08T17:04:10			
Observation end time	221597556.184000	221598099.56735			
Observation end date	2005-01-08T18:51:32	2005-01-08T19:01:39			
Read mode	TIMED	TIMED			

## 2.3 Aspect





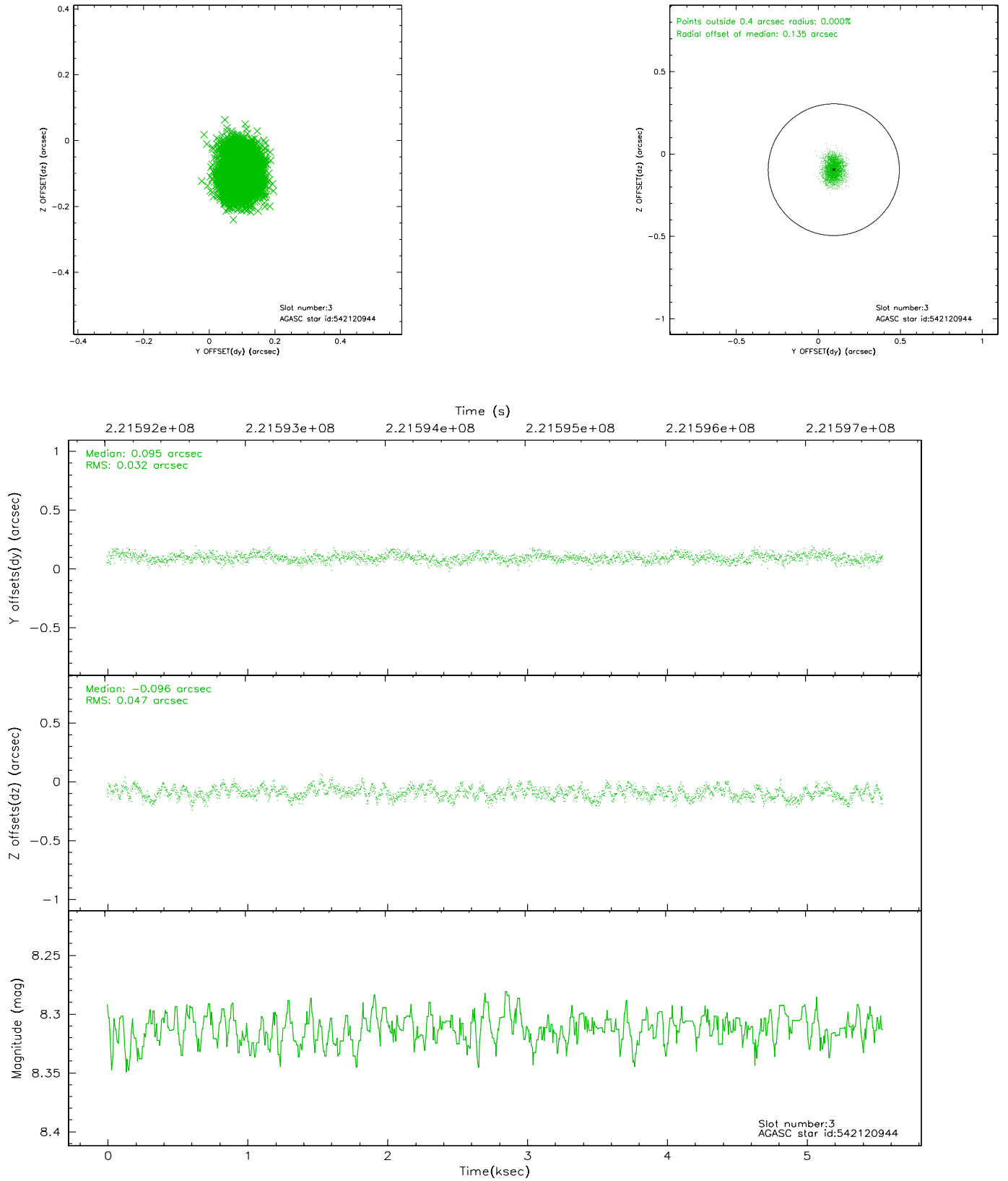
### Slot Statistics

slot	status	id	mag	n_pts	med_dy	med_dz	dr1	dr2	ra	dec	mean_y	mean_z
0	FID	ACIS-S-2	7.10	1354	-0.013	-0.022	0.012	0.017	0.000000	0.000000	-760.40	-1730.20
1	FID	ACIS-S-4	7.21	1354	0.046	0.012	0.015	0.020	0.000000	0.000000	2152.43	177.23
2	FID	ACIS-S-5	7.23	1354	-0.067	0.019	0.010	0.017	0.000000	0.000000	-1811.93	172.10
3	GUIDE	542120944	8.31	2707	0.095	-0.096	0.062	0.097	144.941247	60.717868	908.29	1295.49
4	GUIDE	542122456	9.99	2705	0.024	0.006	0.131	0.205	144.840456	60.749848	1112.59	1351.65
5	GUIDE	542124936	9.10	2703	-0.121	0.049	0.100	0.156	145.086813	60.487942	119.13	1654.25
6	GUIDE	542125432	8.42	2706	-0.013	0.015	0.064	0.102	146.903549	60.408041	-2207.03	-599.09
7	GUIDE	542127256	10.07	2703	0.019	0.030	0.154	0.245	145.373562	61.393800	2229.13	-882.18

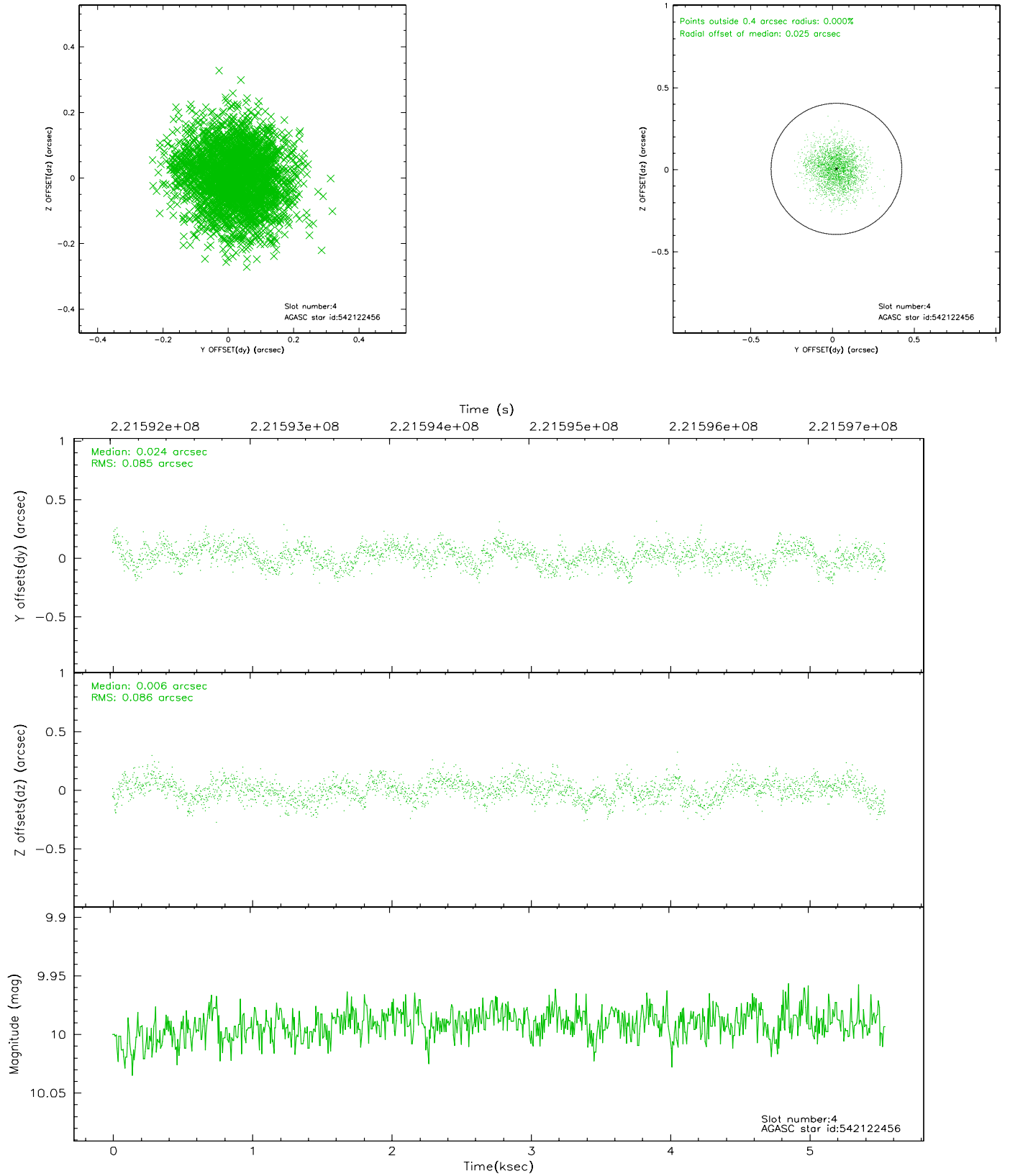


## 2.4 Star Slots

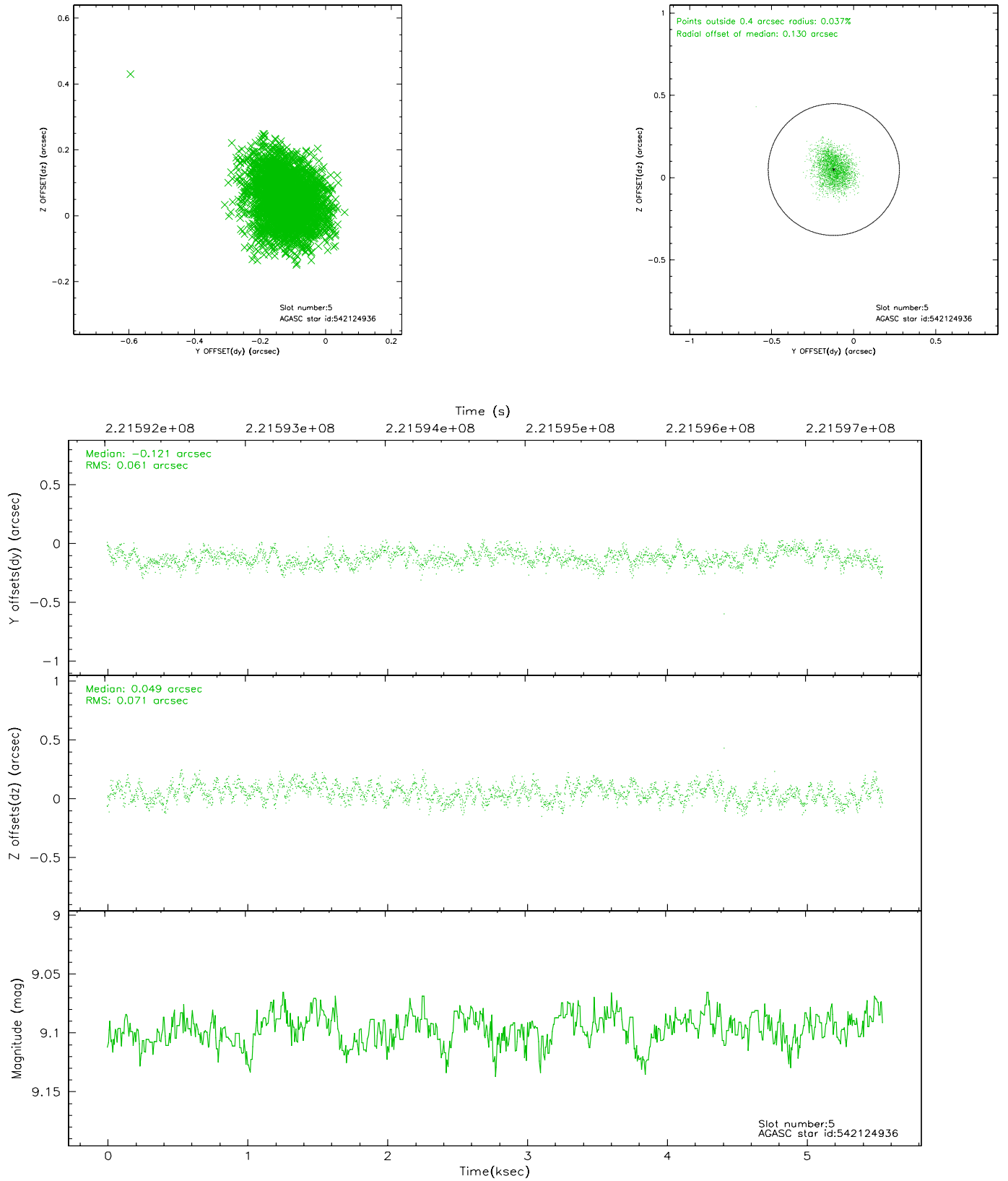
### 2.4.1 Slot 3



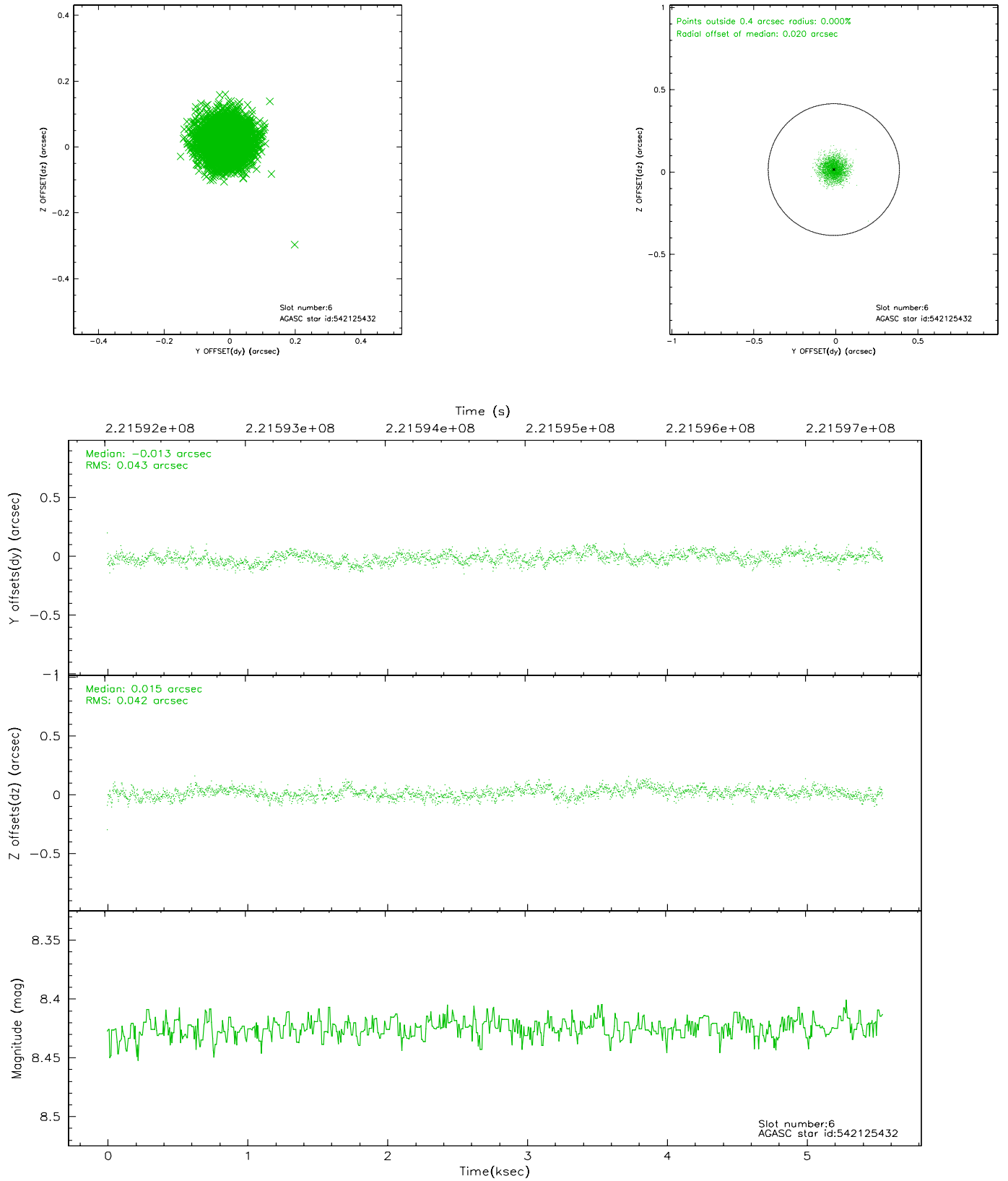
## 2.4.2 Slot 4



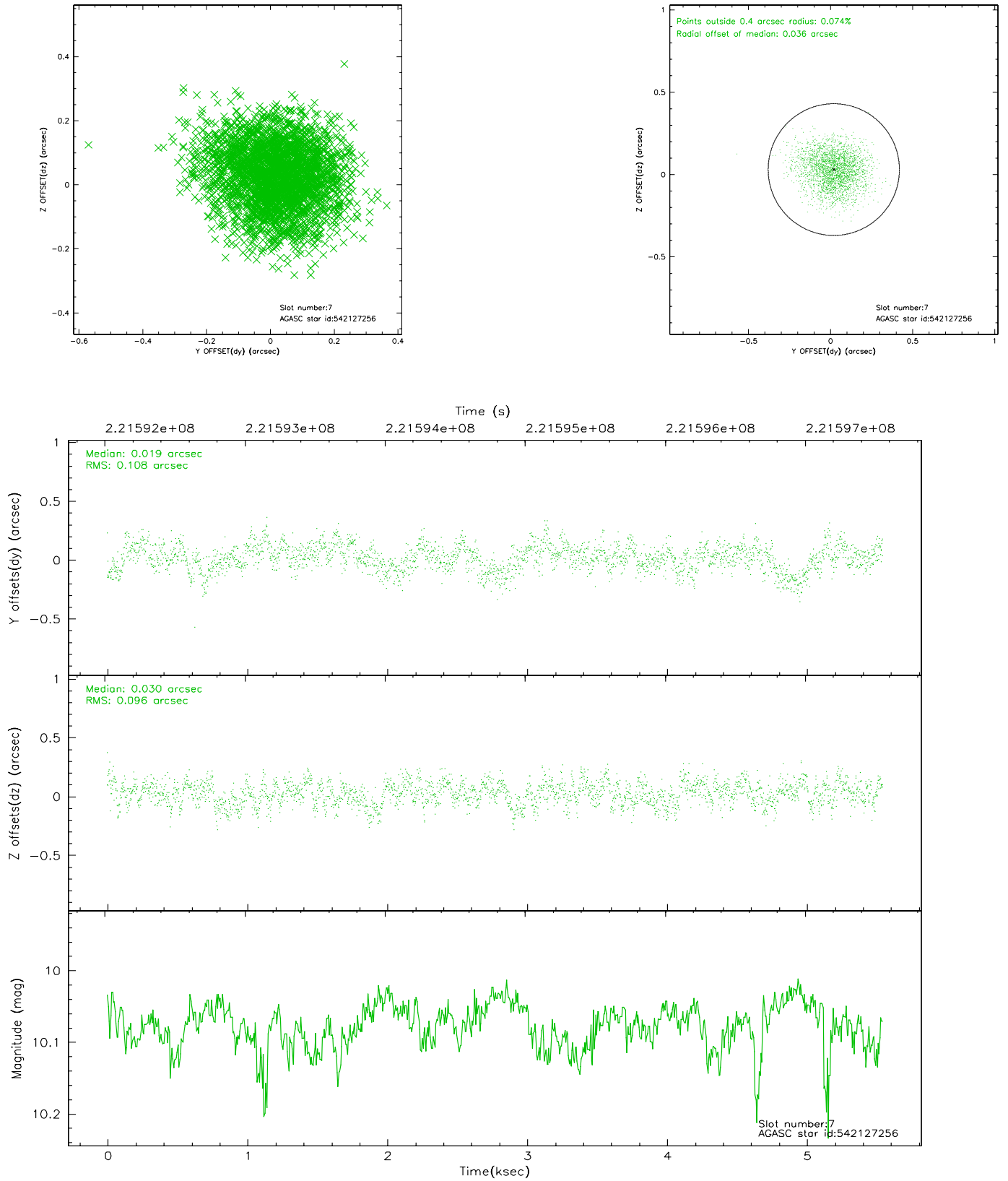
### 2.4.3 Slot 5



## 2.4.4 Slot 6

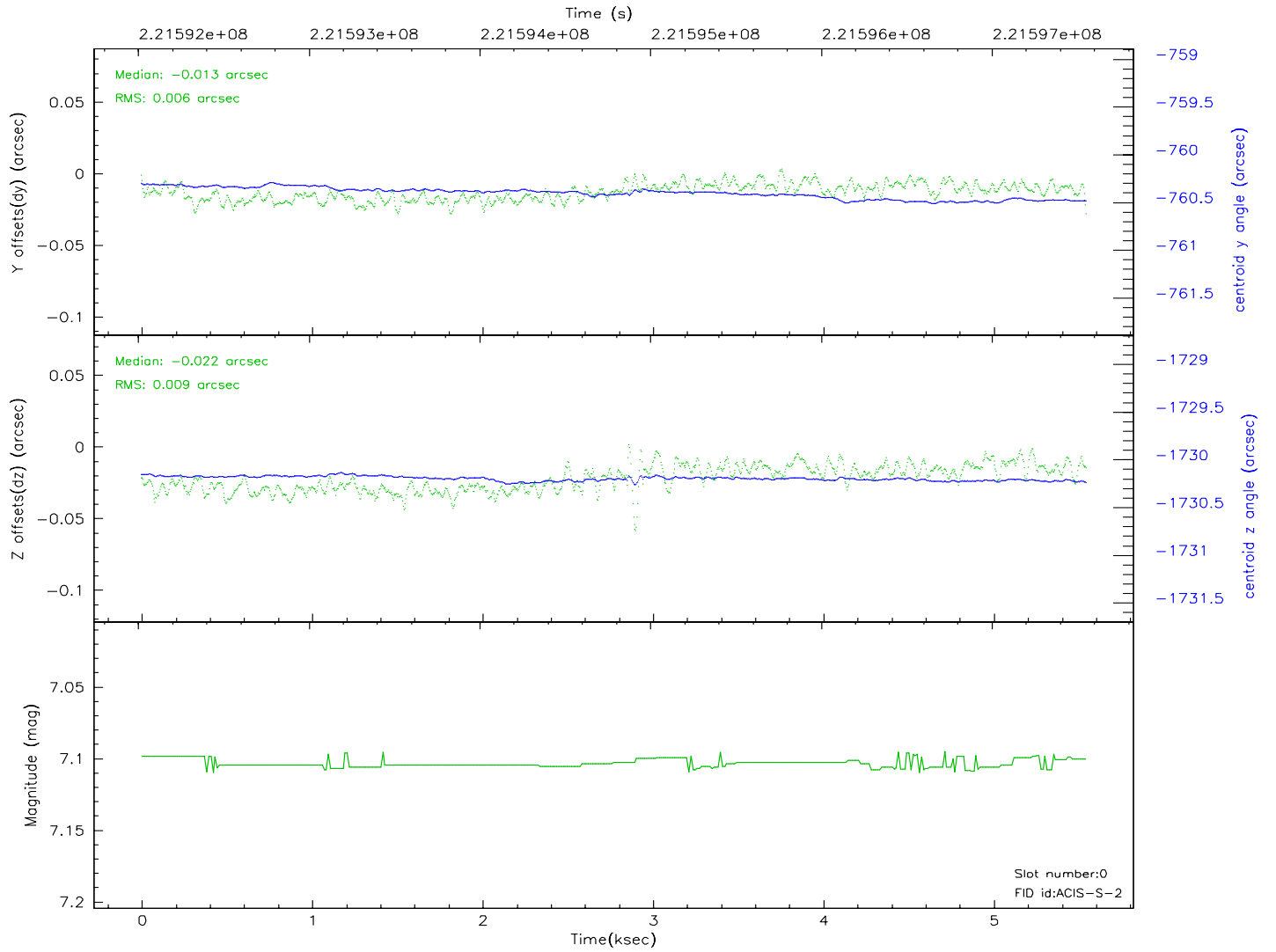
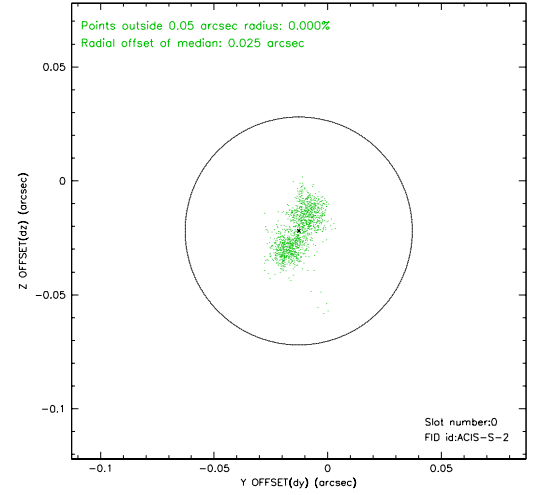
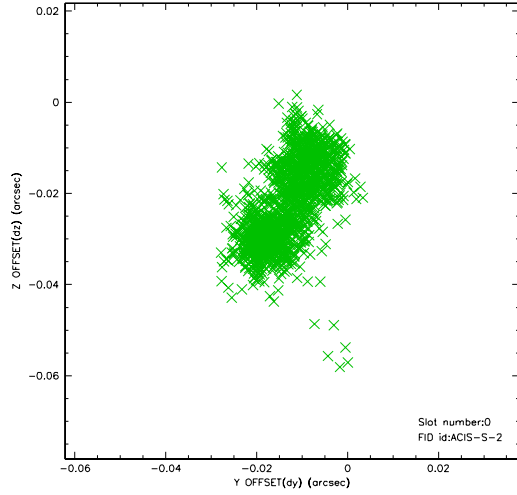


## 2.4.5 Slot 7

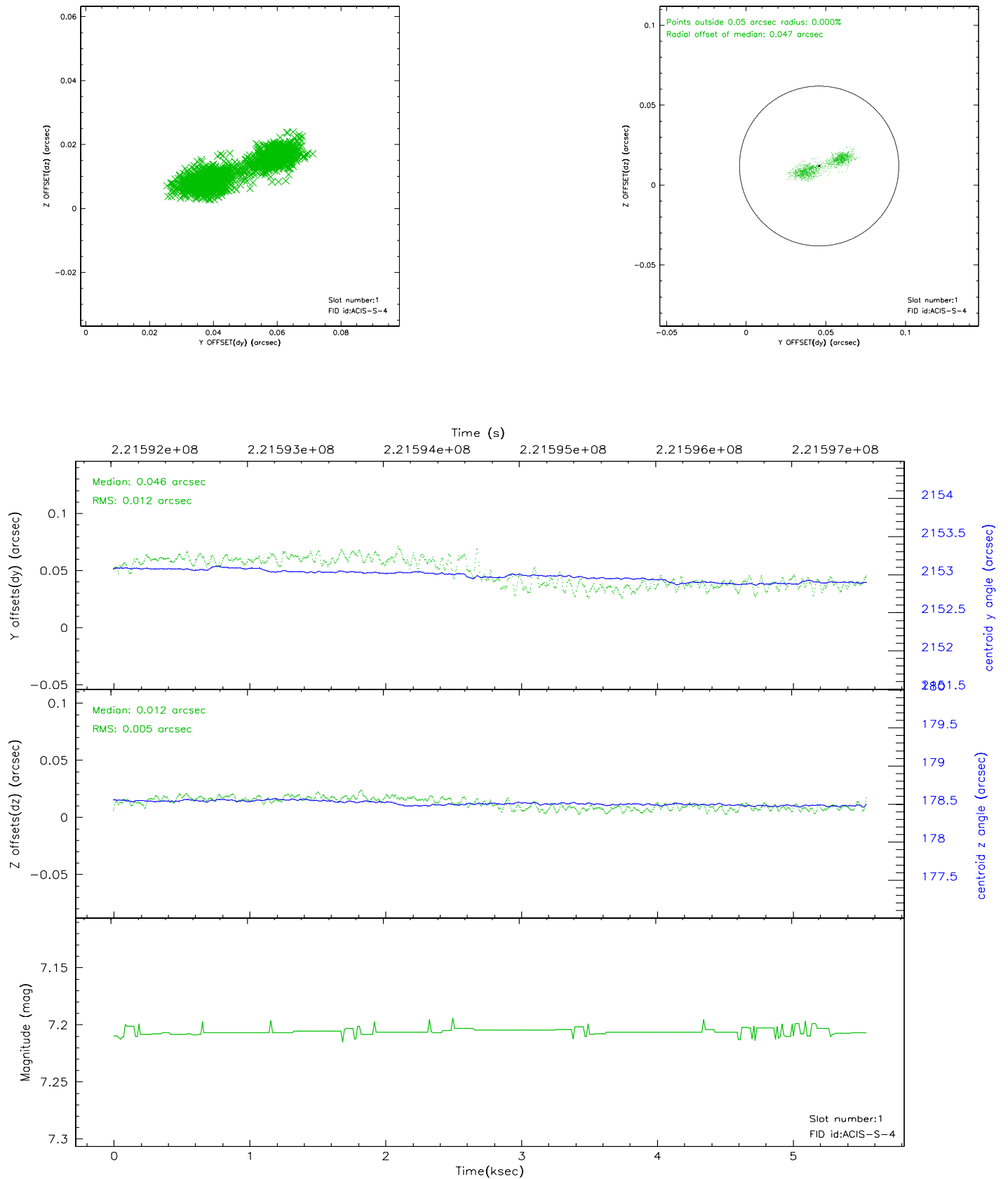


## 2.5 FID Slots

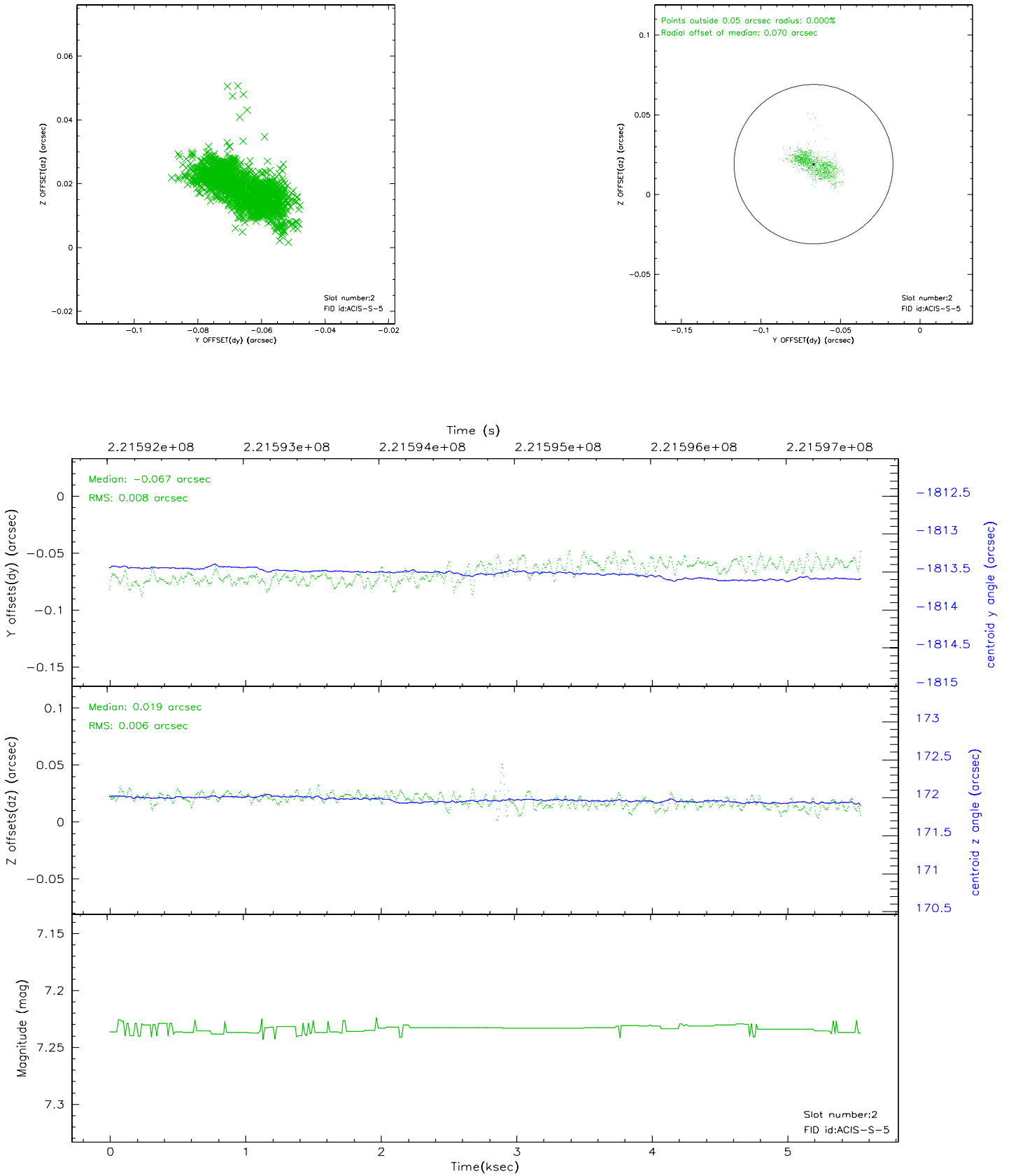
### 2.5.1 Slot 0



## 2.5.2 Slot 1



### 2.5.3 Slot 2





### 3 Point Sources

## A Summary

### A.1 Status

V&V Scientist	Jen Lauer
V&V Date (YYYY-MM-DD)	2006.02.16
V&V Edition	1
V&V Disposition and Status	OK
V&V Charge Time	5.5468

### A.2 Comments

Charge time:

Using existing charge time of 5.5468.