

# V&V Reference Report

## L2 ASCDS Version : 7.6.7

Observation 5659 - L2 Version 002  
Chandra X-Ray Center

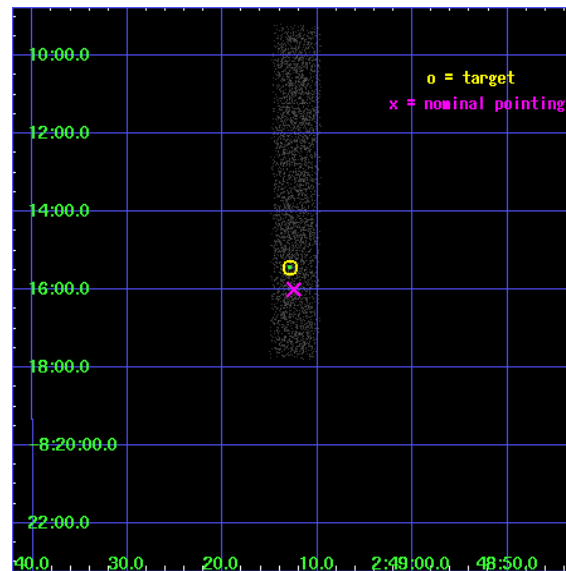
L2 Processing Date: Feb 25 2006

## Contents

<b>1</b>	<b>Front</b>	<b>2</b>
<b>2</b>	<b>OBI</b>	<b>3</b>
2.1	OBI . . . . .	3
2.1.1	Images . . . . .	3
2.1.2	Bias . . . . .	3
2.1.3	Parameters . . . . .	4
2.1.4	Events . . . . .	4
2.2	Compared Parameters . . . . .	5
2.3	Aspect . . . . .	6
2.4	Star Slots . . . . .	9
2.4.1	Slot 3 . . . . .	9
2.4.2	Slot 4 . . . . .	10
2.4.3	Slot 5 . . . . .	11
2.4.4	Slot 6 . . . . .	12
2.4.5	Slot 7 . . . . .	13
2.5	FID Slots . . . . .	14
2.5.1	Slot 0 . . . . .	14
2.5.2	Slot 1 . . . . .	15
2.5.3	Slot 2 . . . . .	16
<b>3</b>	<b>Point Sources</b>	<b>17</b>
<b>A</b>	<b>Summary</b>	<b>18</b>
A.1	Status . . . . .	18
A.2	Comments . . . . .	18

# 1 Front

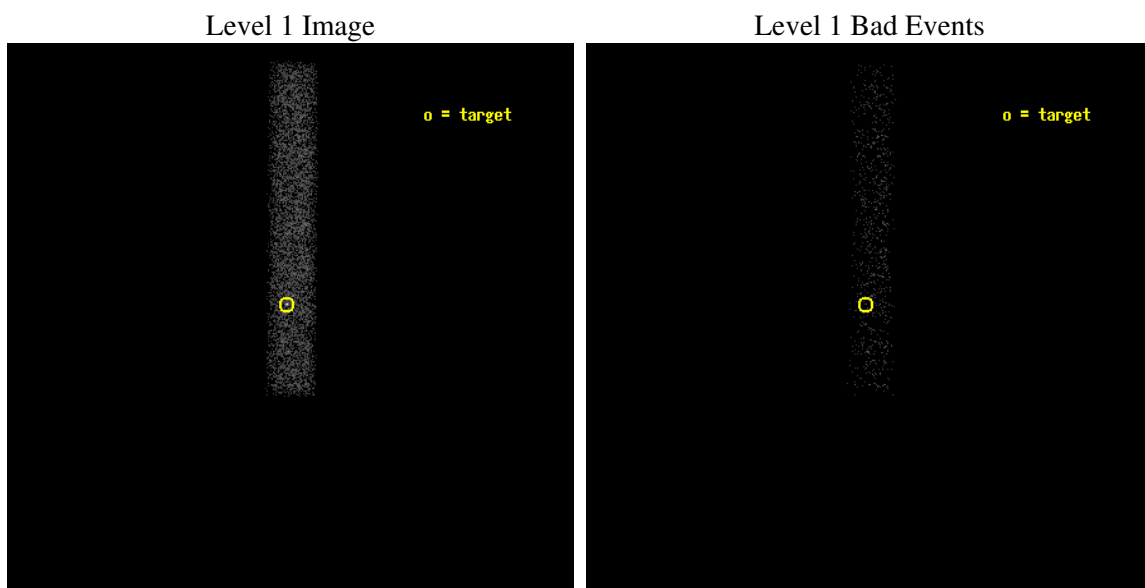
seq_num	701082
obs_id	5659
title	X-ray Properties of AGNs with Intermediate-mass Black Holes
observer	Dr. Luis Ho
object	SDSS J024912.86-081525.6
dtcycle	0
cycle	P
ra_targ	42.30375
dec_targ	-8.257111
ra_nom	42.30208638426
dec_nom	-8.266722211646
roll_nom	270.3003126911
revision	2
ontime	5667.6000844538
livetime	5140.2141161381
ontime7	5667.6000844538
l2events	4415



## 2 OBI

### 2.1 OBI

#### 2.1.1 Images



#### 2.1.2 Bias

Chip 7



### 2.1.3 Parameters

obi_num	0
ascdsver	7.6.7
caldbver	3.2.1
date	2006-02-25T14:39:28
revision	2

sched_exp_time	5489.367000
ontime	6574.0611878932
ontime7	6574.0611878932
l1events	10280

### 2.1.4 Events

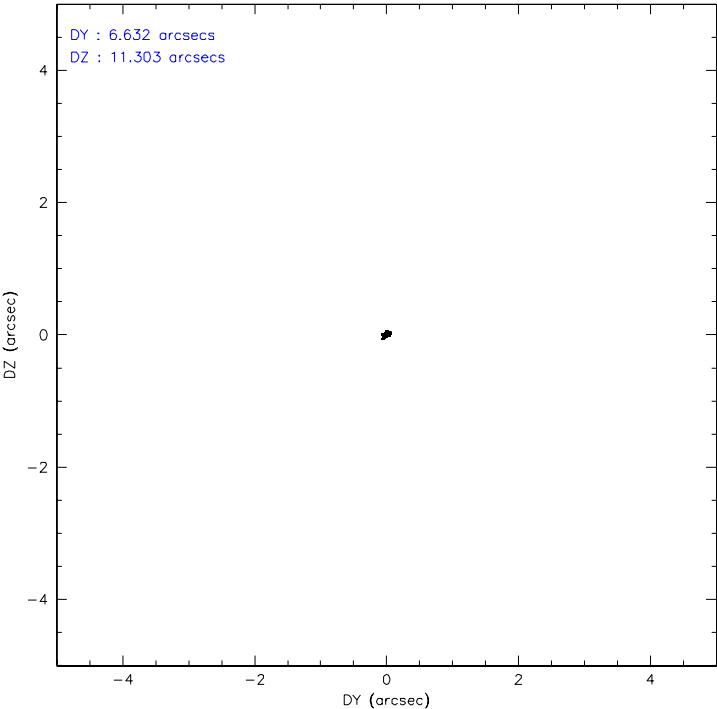
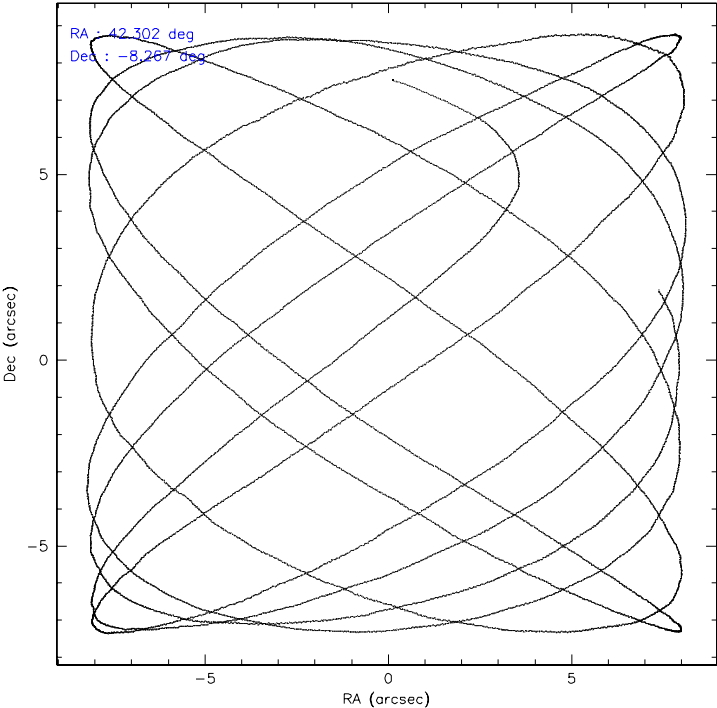
	<b>ccd 7</b>
level 1 events	10280
rejected events	5722
rejected %	55%

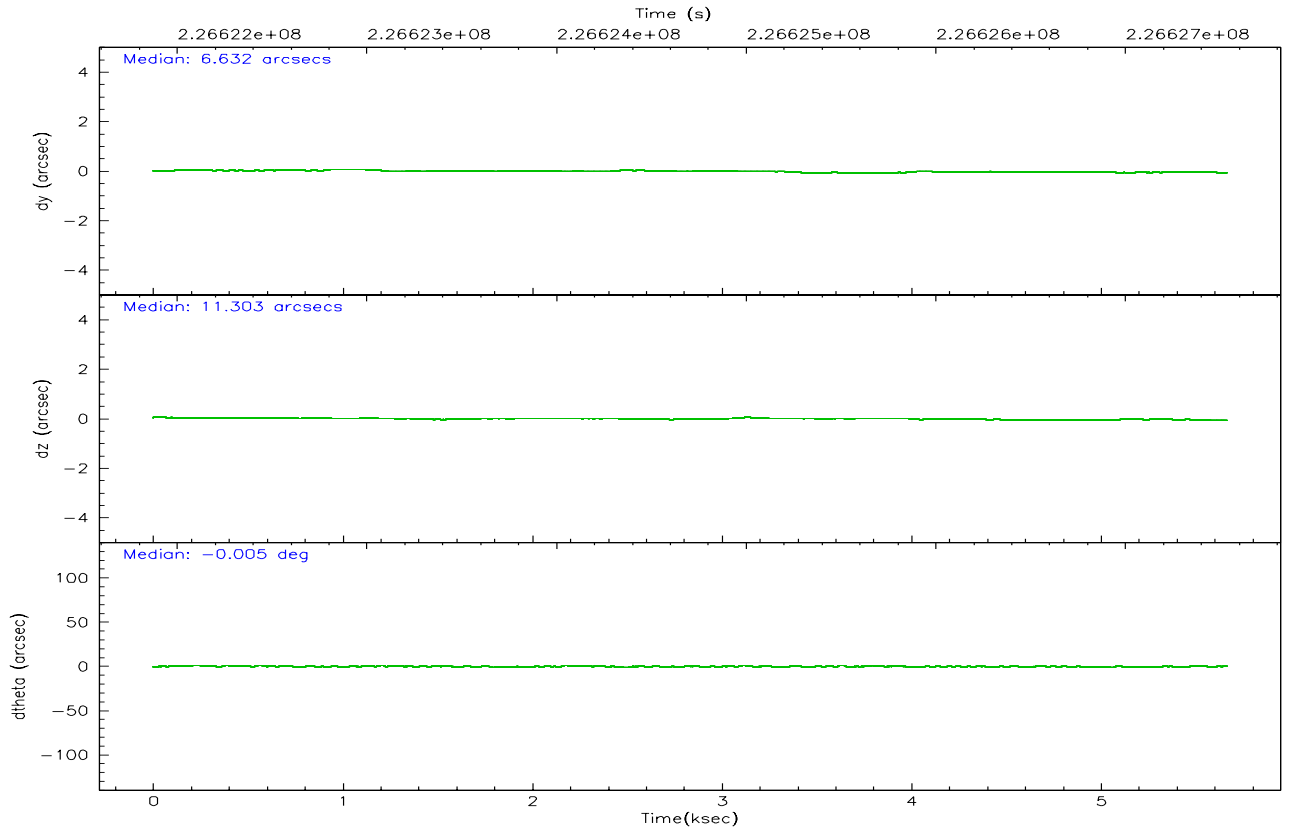
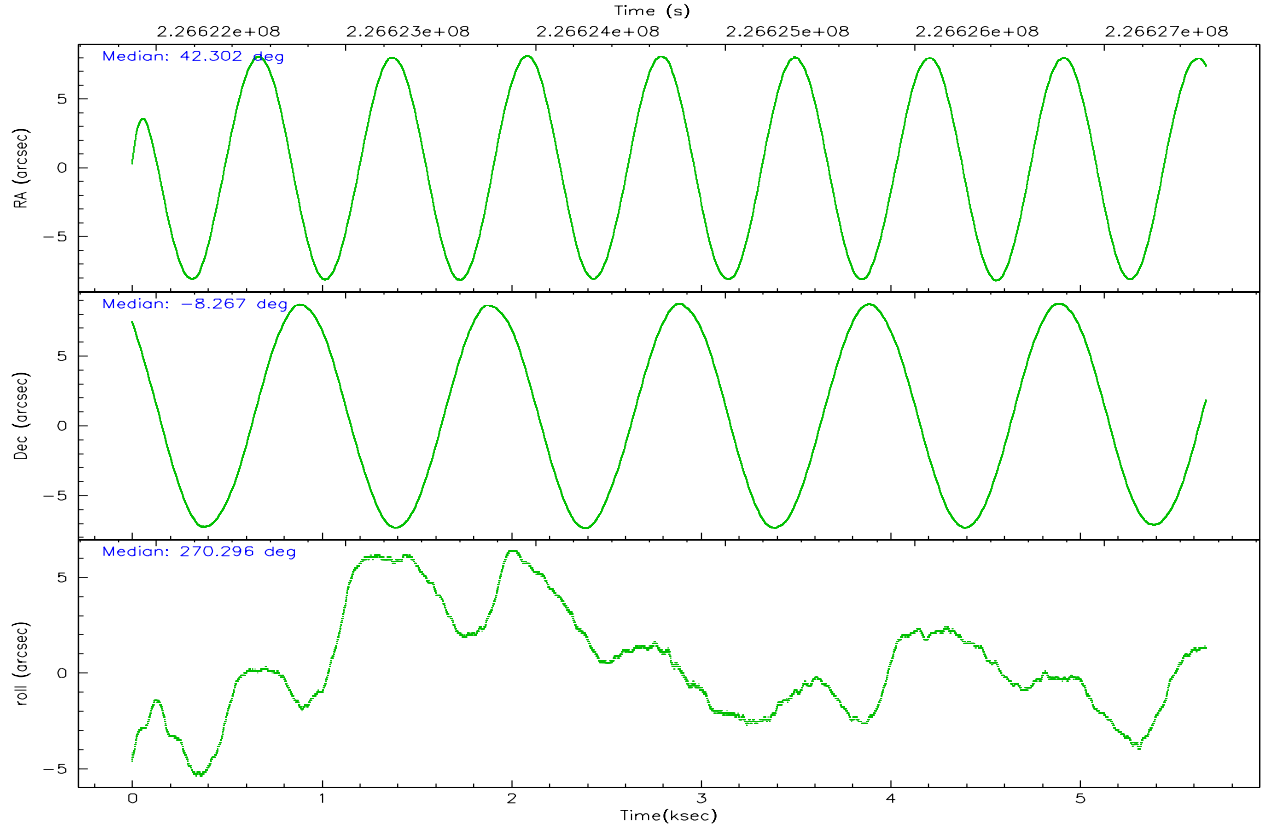
	<b>ccd 7</b>
grade 0 events	500
	4%
grade 1 events	12
	0%
grade 2 events	1082
	10%
grade 3 events	499
	4%
grade 4 events	467
	4%
grade 5 events	612
	5%
grade 6 events	2633
	25%
grade 7 events	4475
	43%

## 2.2 Compared Parameters

Parameter	Planned	Actual	Parameter	Planned	Actual
Instrument	ACIS	ACIS	Obspar format version number	6	6
Detector	ACIS-7	ACIS-7	Obspar file type	PREDICTED	ACTUAL
Grating	NONE	NONE	Obspar update status	NONE	UPDATED
Data mode	FAINT	FAINT	On-chip summing requested	N	N
Observation mode	POINTING	POINTING	Subarray requested	1/8	1/8
Pointing RA	42.287877	42.30208638426041	Subarray start row	0	449
Pointing Dec	-8.243316	-8.266722211645982	Subarray row count	1024	128
Pointing Roll	270.141661	270.3003126911025	Alternating exposures requested	N	N
SIM focus pos (mm)	-0.684267	-0.6828225247311905	Primary exposure time	0.000000	0.4
SIM defocus (mm)	0	0.001444936568705701			
SIM translation stage pos (mm)	-190.132523	-190.1425803651734			
SIM translation stage offset (mm)	0	0.01005778216563158			
Observation start time	226622047.184000	226620964.18193			
Observation start date	2005-03-07T22:33:03	2005-03-07T22:16:04			
Observation end time	226627537.184000	226627761.98223			
Observation end date	2005-03-08T00:04:33	2005-03-08T00:09:21			
Read mode	TIMED	TIMED			

## 2.3 Aspect





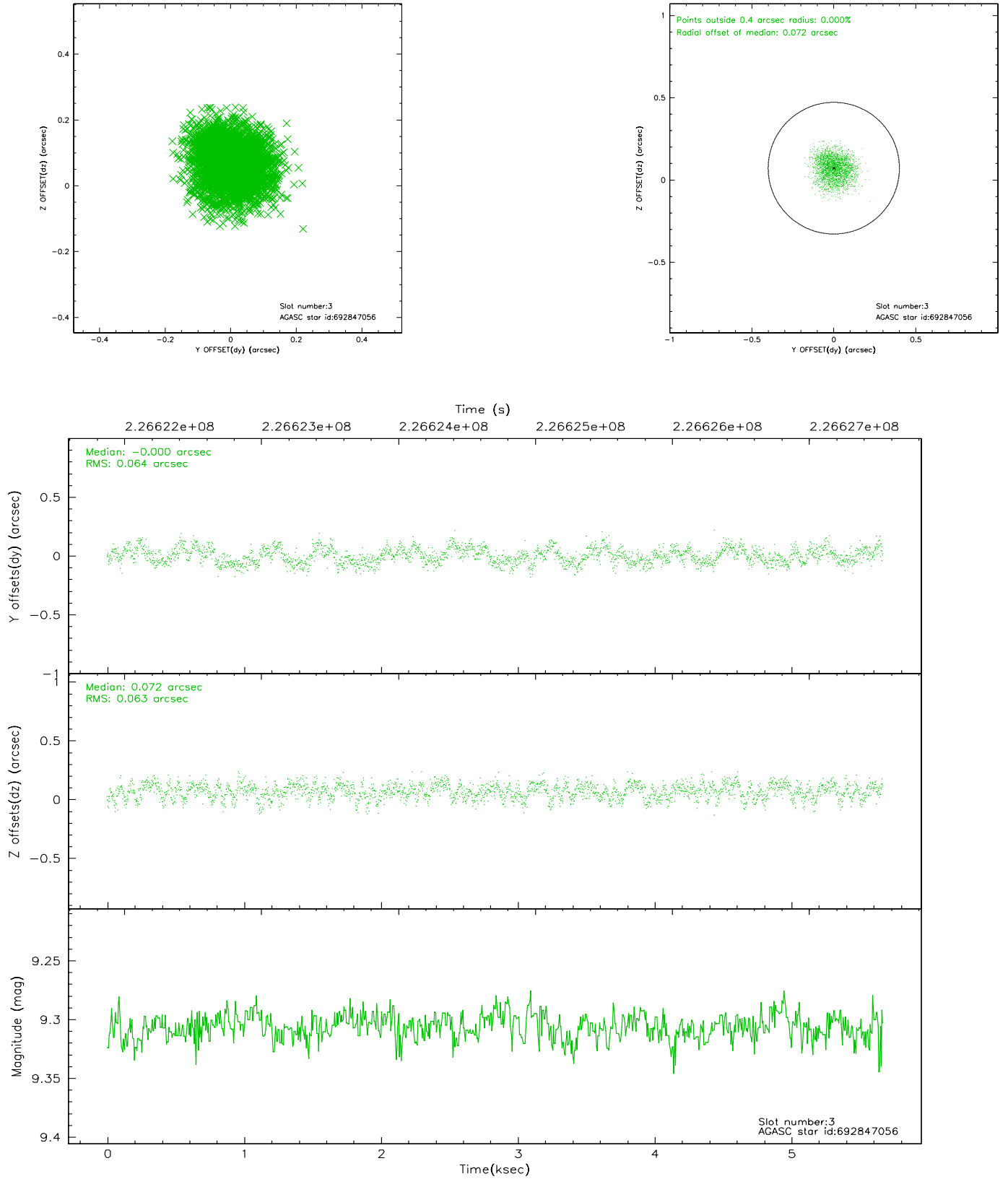
### Slot Statistics

slot	status	id	mag	n_pts	med_dy	med_dz	dr1	dr2	ra	dec	mean_y	mean_z
0	FID	ACIS-S-2	7.10	1383	-0.044	-0.004	0.007	0.011	0.000000	0.000000	-759.39	-1732.55
1	FID	ACIS-S-4	7.20	1383	0.049	0.022	0.005	0.009	0.000000	0.000000	2153.48	174.91
2	FID	ACIS-S-5	7.23	1383	-0.036	-0.010	0.007	0.012	0.000000	0.000000	-1810.89	169.70
3	GUIDE	692847056	9.31	2764	-0.000	0.072	0.099	0.151	42.804476	-8.329257	314.91	1839.78
4	GUIDE	692851824	9.25	2760	0.207	0.041	0.099	0.161	42.192027	-8.759054	1855.94	-344.48
5	GUIDE	692854008	9.43	2763	-0.115	0.131	0.091	0.150	42.250944	-7.685031	-2009.52	-126.66
6	GUIDE	692854632	8.13	2757	-0.052	-0.192	0.077	0.123	41.632650	-8.028072	-779.49	-2334.24
7	GUIDE	692847136	9.46	2764	-0.040	-0.046	0.111	0.173	42.935208	-8.269333	100.65	2305.34

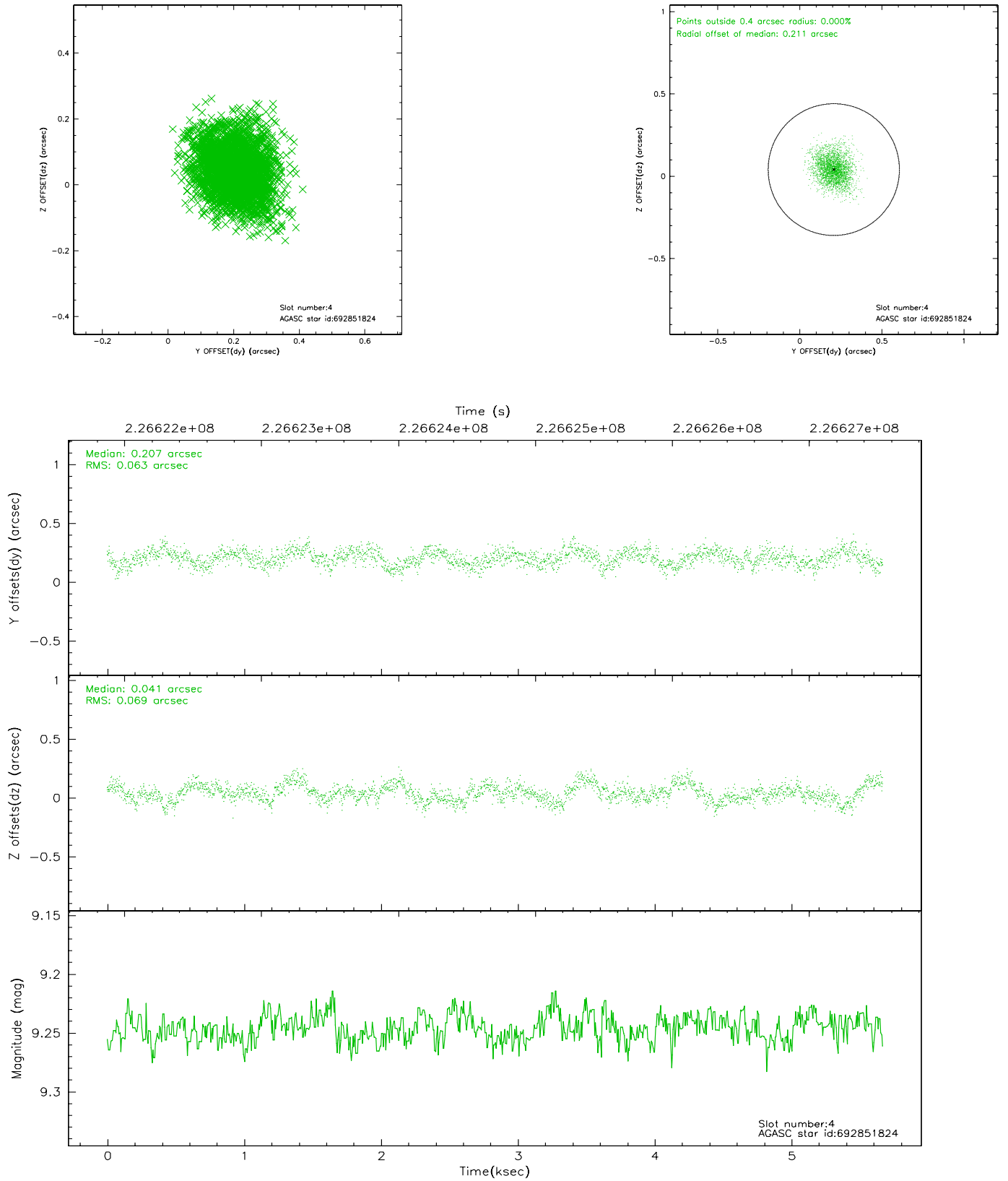


## 2.4 Star Slots

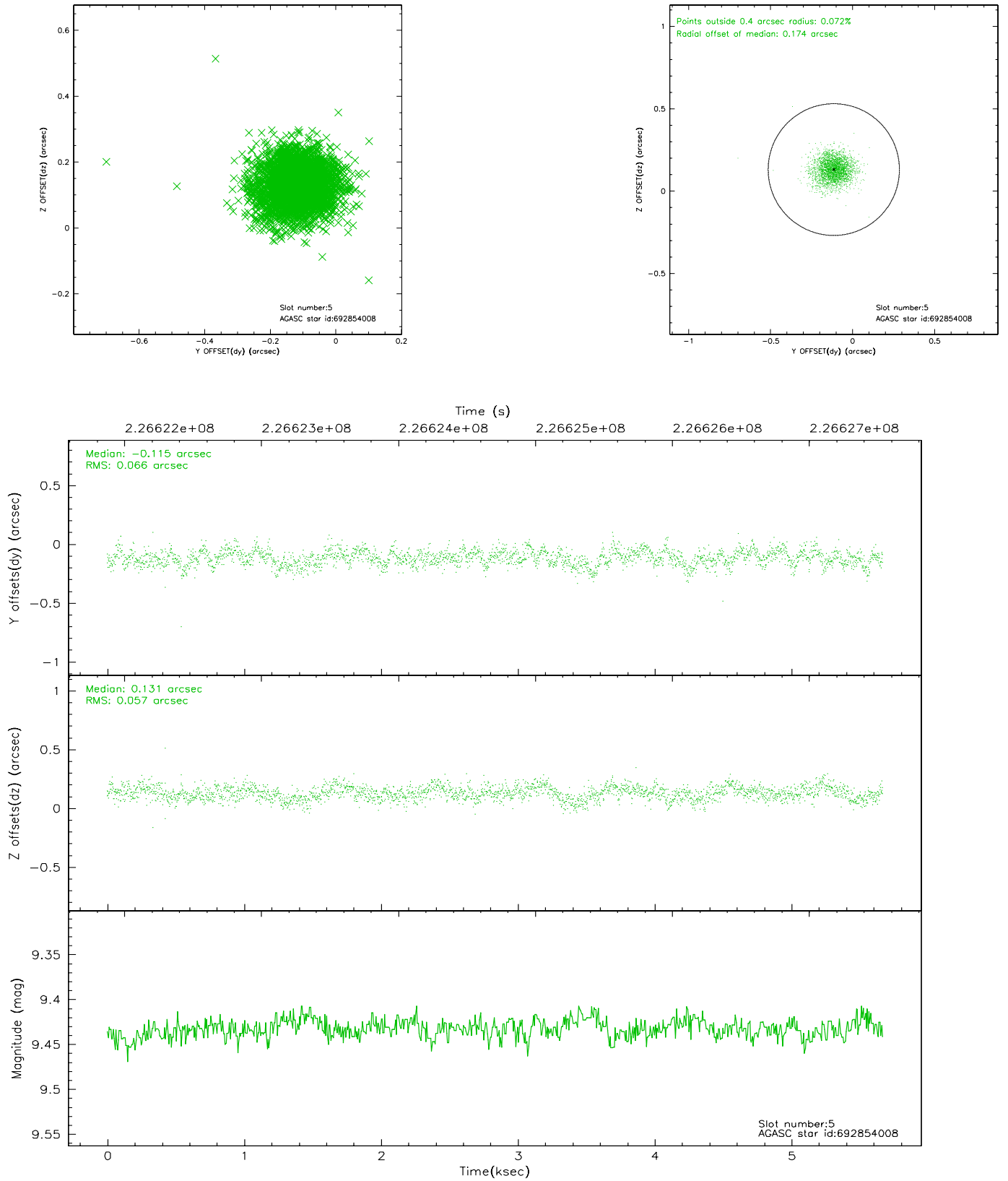
### 2.4.1 Slot 3



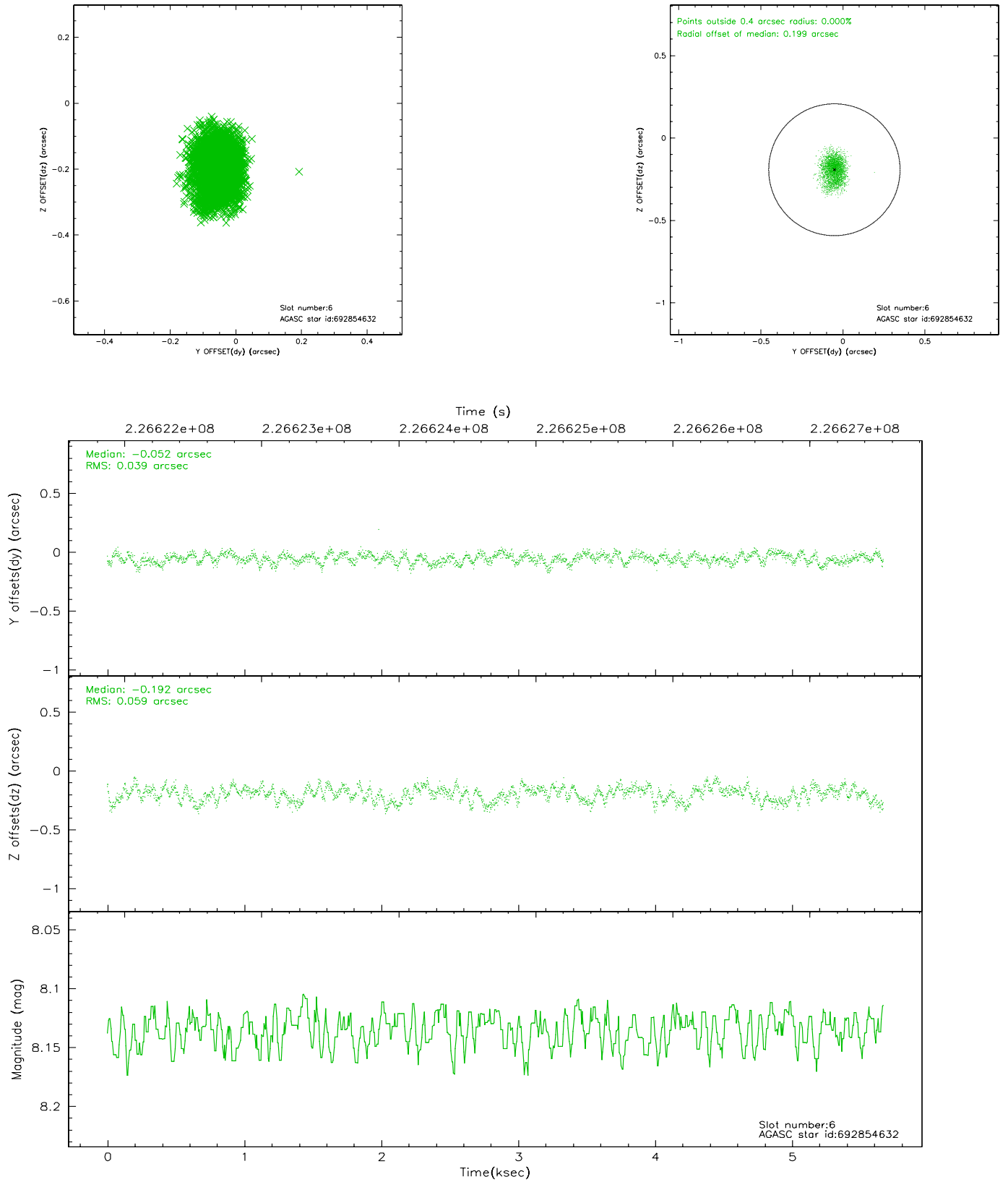
## 2.4.2 Slot 4



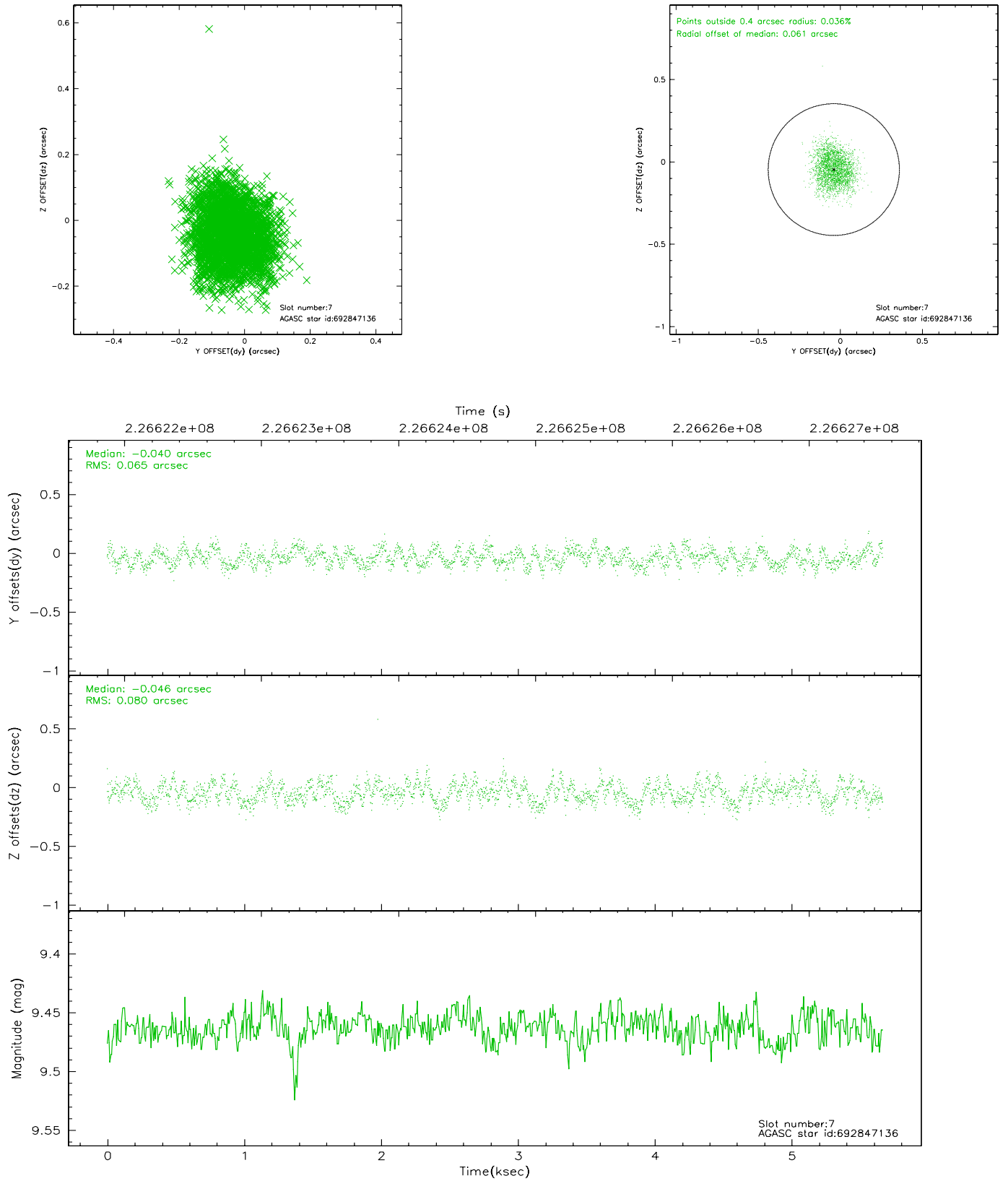
### 2.4.3 Slot 5



## 2.4.4 Slot 6

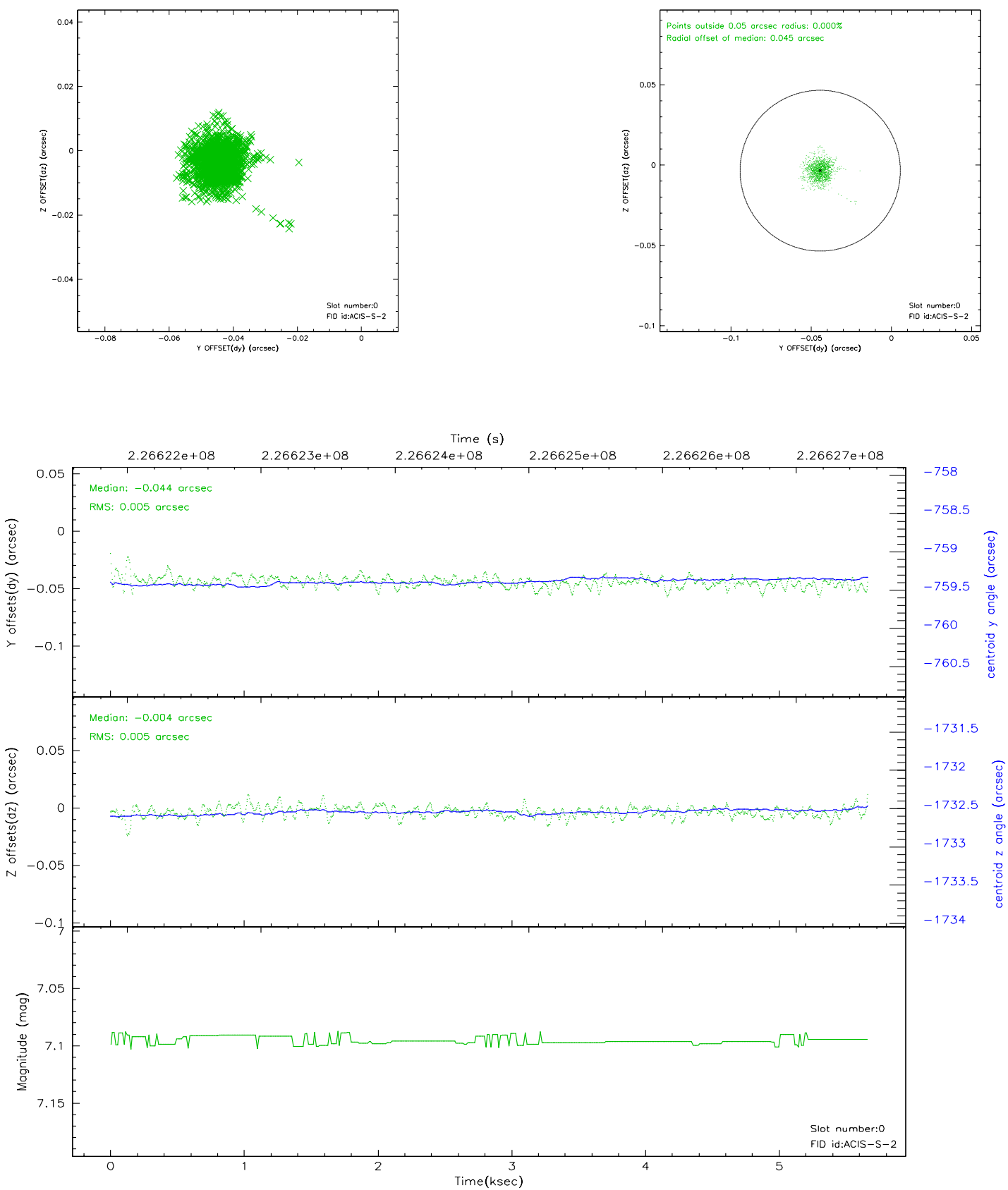


## 2.4.5 Slot 7

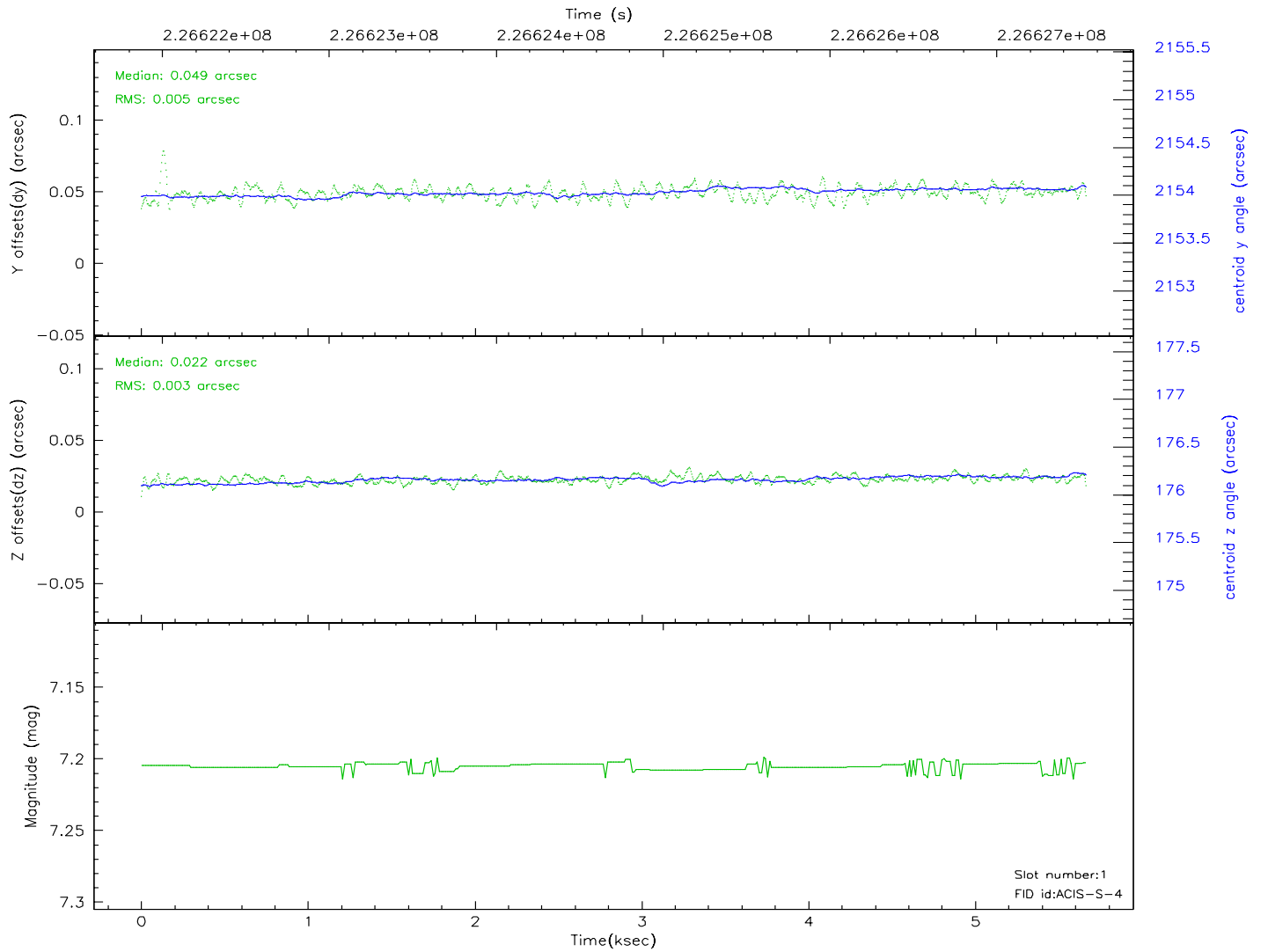
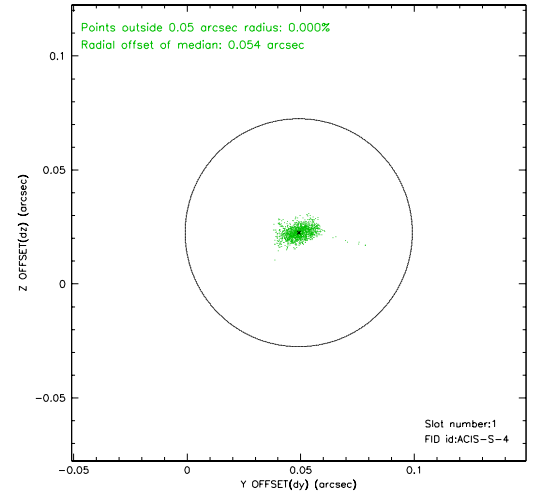
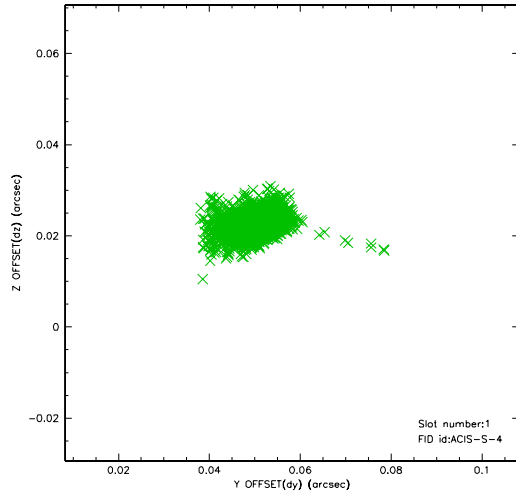


## 2.5 FID Slots

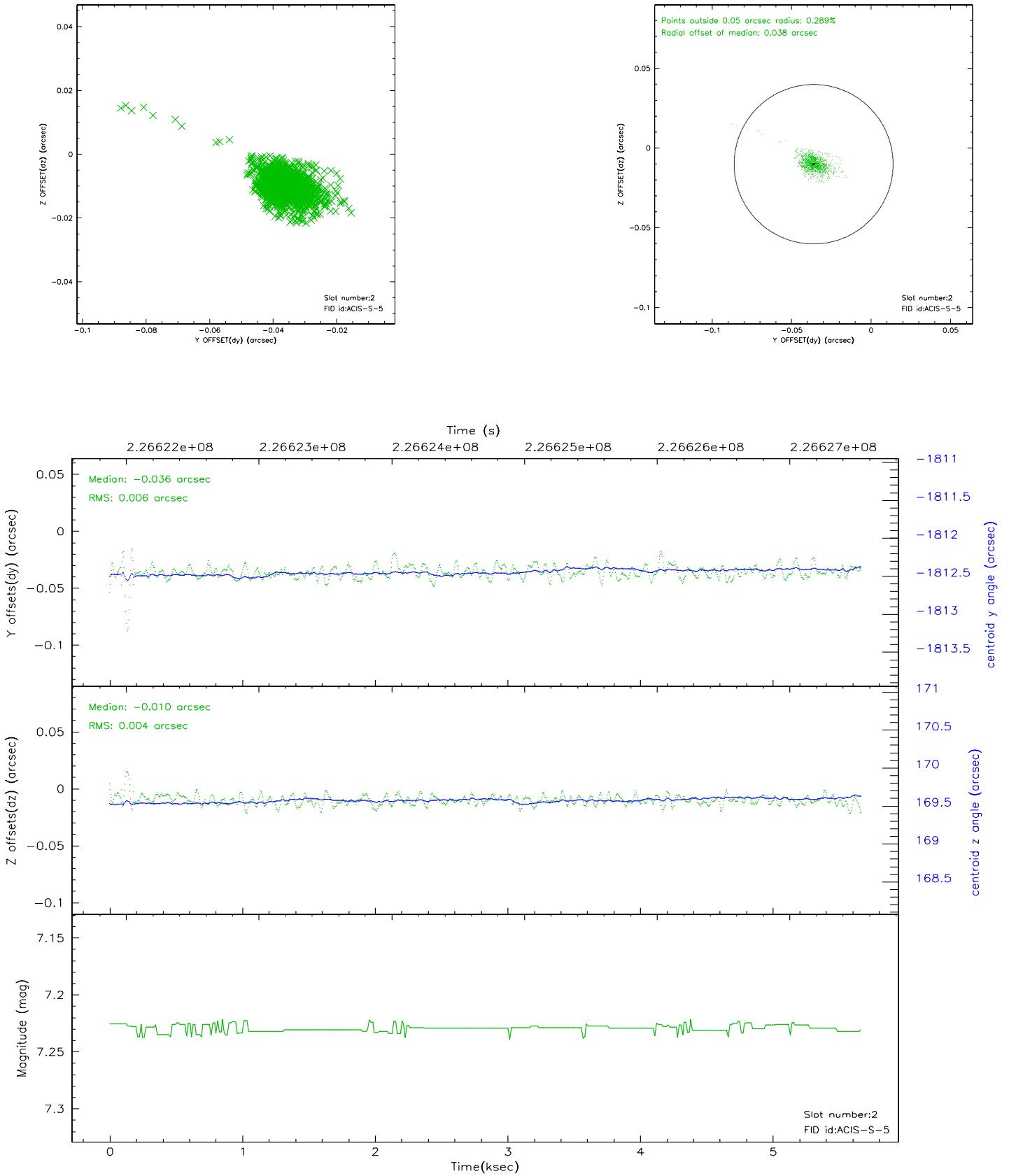
### 2.5.1 Slot 0



## 2.5.2 Slot 1



### 2.5.3 Slot 2





### 3 Point Sources

## A Summary

### A.1 Status

V&V Scientist	Beth Sundheim
V&V Date (YYYY-MM-DD)	2006.02.27
V&V Edition	1
V&V Disposition and Status	OK
V&V Charge Time	5.6676

### A.2 Comments