

V&V Reference Report

L2 ASCDS Version : 7.6.7.1

Observation 5635 - L2 Version 002
Chandra X-Ray Center

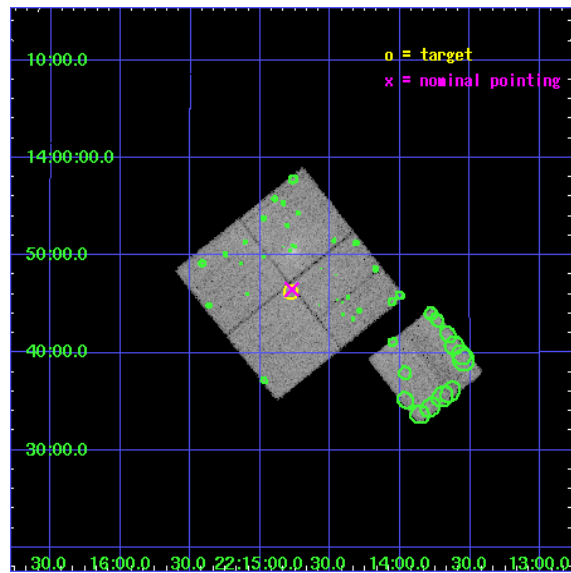
L2 Processing Date : Mar 15 2006

Contents

1	Front	2
2	OBI	3
2.1	OBI	3
2.1.1	Images	3
2.1.2	Bias	3
2.1.3	Parameters	4
2.1.4	Events	4
2.2	Compared Parameters	5
2.3	Aspect	6
2.4	Star Slots	9
2.4.1	Slot 3	9
2.4.2	Slot 4	10
2.4.3	Slot 5	11
2.4.4	Slot 6	12
2.4.5	Slot 7	13
2.5	FID Slots	14
2.5.1	Slot 0	14
2.5.2	Slot 1	15
2.5.3	Slot 2	16
3	Point Sources	17
A	Summary	18
A.1	Status	18
A.2	Comments	18

1 Front

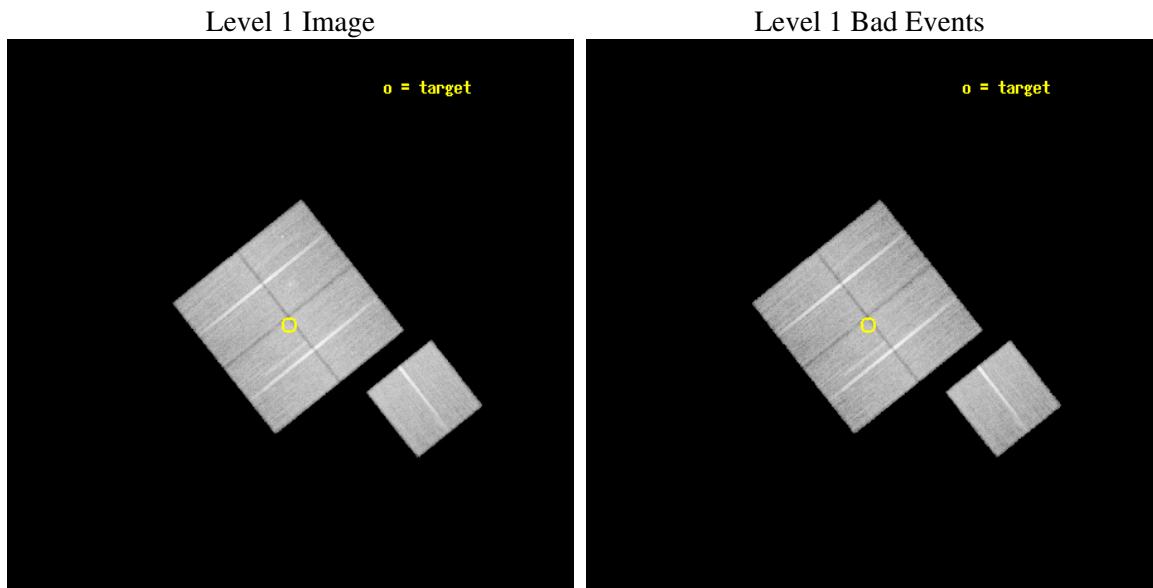
seq_num	701058
obs_id	5635
title	A Chandra Study of Two Nearby, Powerful Radio Galaxies in Poor Environments
observer	Dr. Ralph Kraft
object	3C 442A
dtcycle	0
cycle	P
ra_targ	333.695833
dec_targ	13.77111
ra_nom	333.69356571808
dec_nom	13.775154181162
roll_nom	141.50923941381
revision	2
ontime	27363.658957124
livetime	27006.132608016
ontime0	27366.799947381
ontime1	27363.658937216
ontime2	27360.517966866
ontime3	27363.658957124
ontime6	27363.658937186
l2events	150396



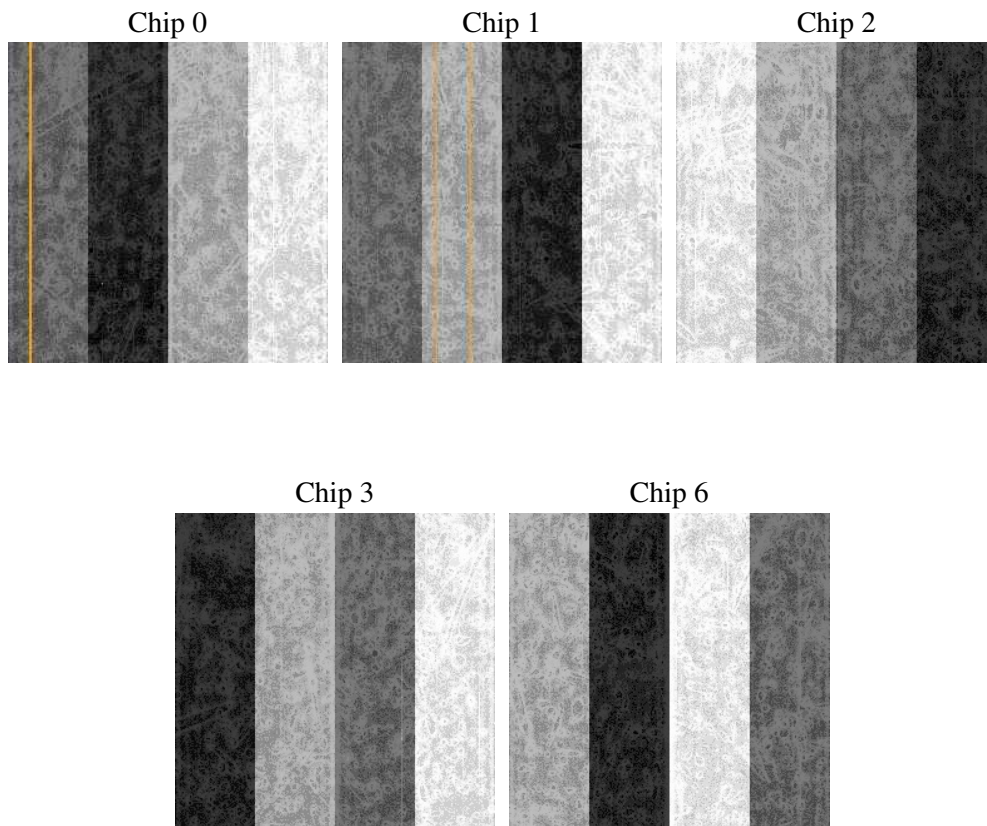
2 OBI

2.1 OBI

2.1.1 Images



2.1.2 Bias



2.1.3 Parameters

obi_num	1
ascdsver	7.6.7.1
caldbver	3.2.1
date	2006-03-15T23:22:32
revision	2

sched_exp_time	27192.345000
ontime	28573.791217953
ontime0	28576.93220821
ontime1	28573.791198045
ontime2	28570.650227696
ontime3	28573.791217953
ontime6	28573.791178107
l1events	1159072

2.1.4 Events

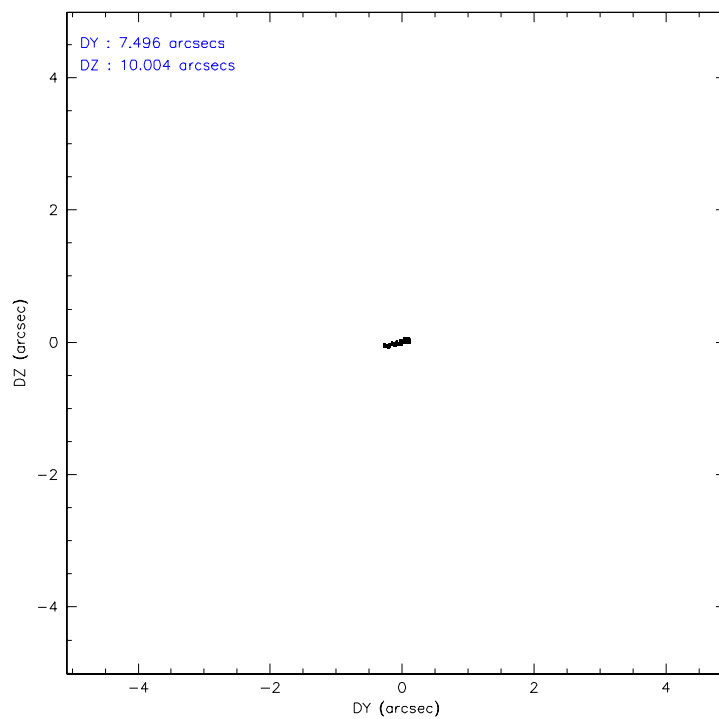
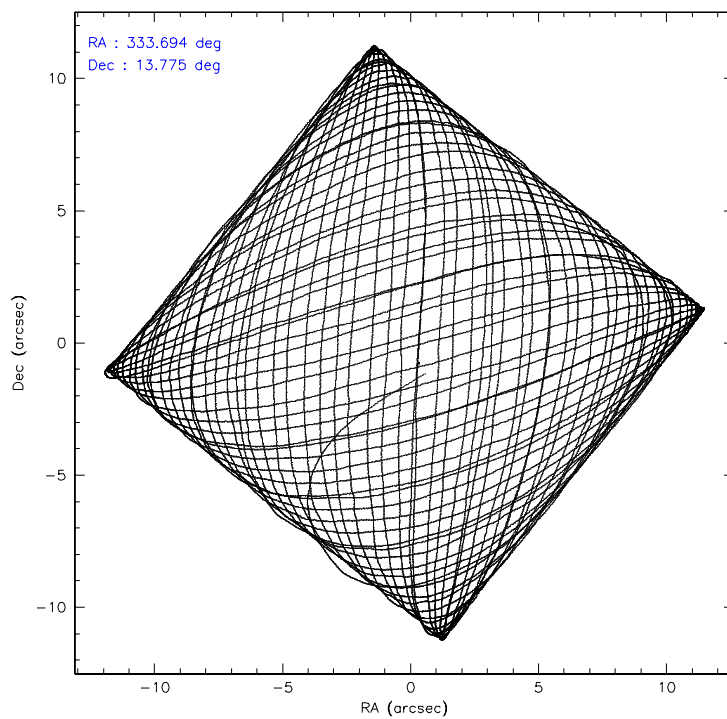
	ccd 0	ccd 1	ccd 2	ccd 3	ccd 6
level 1 events	224757	219755	241773	236423	236364
rejected events	186562	184670	208000	203959	205245
rejected %	83%	84%	86%	86%	86%

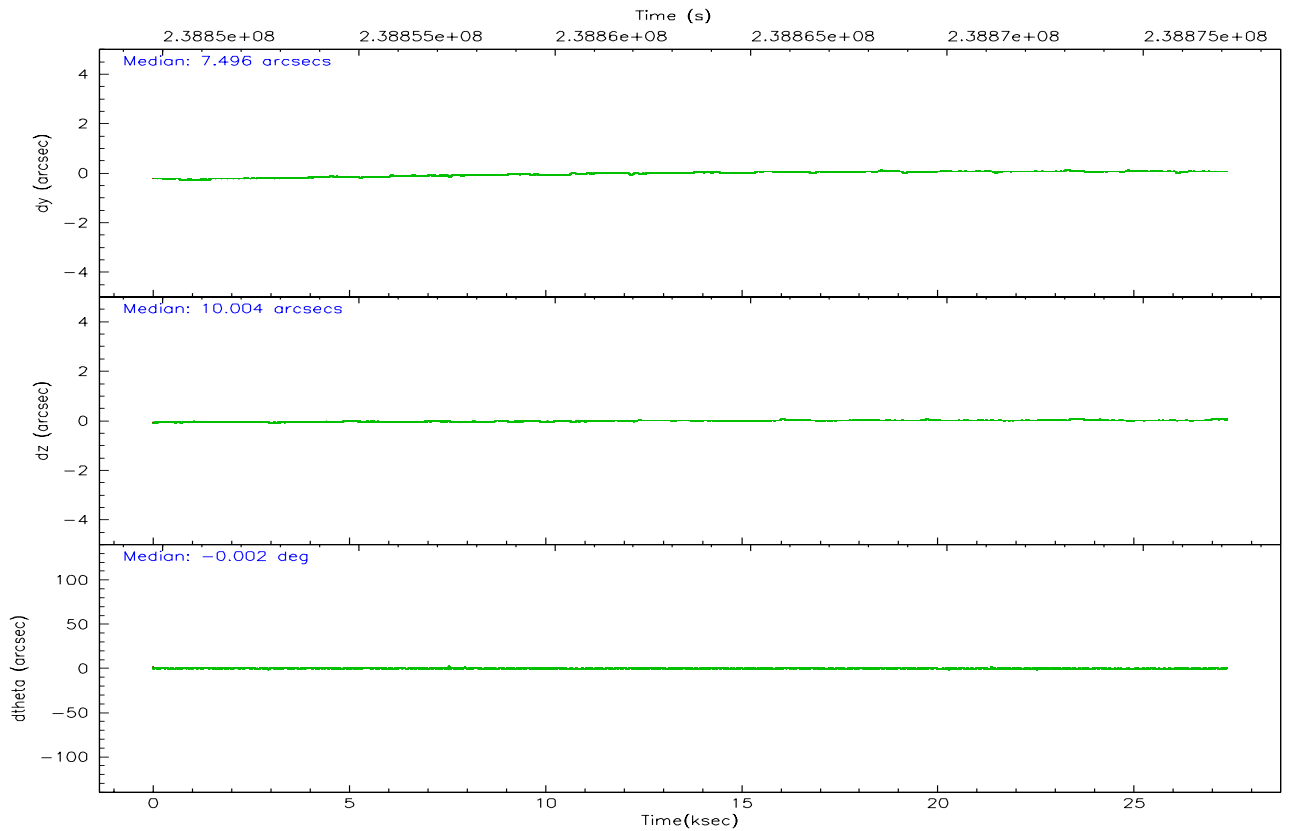
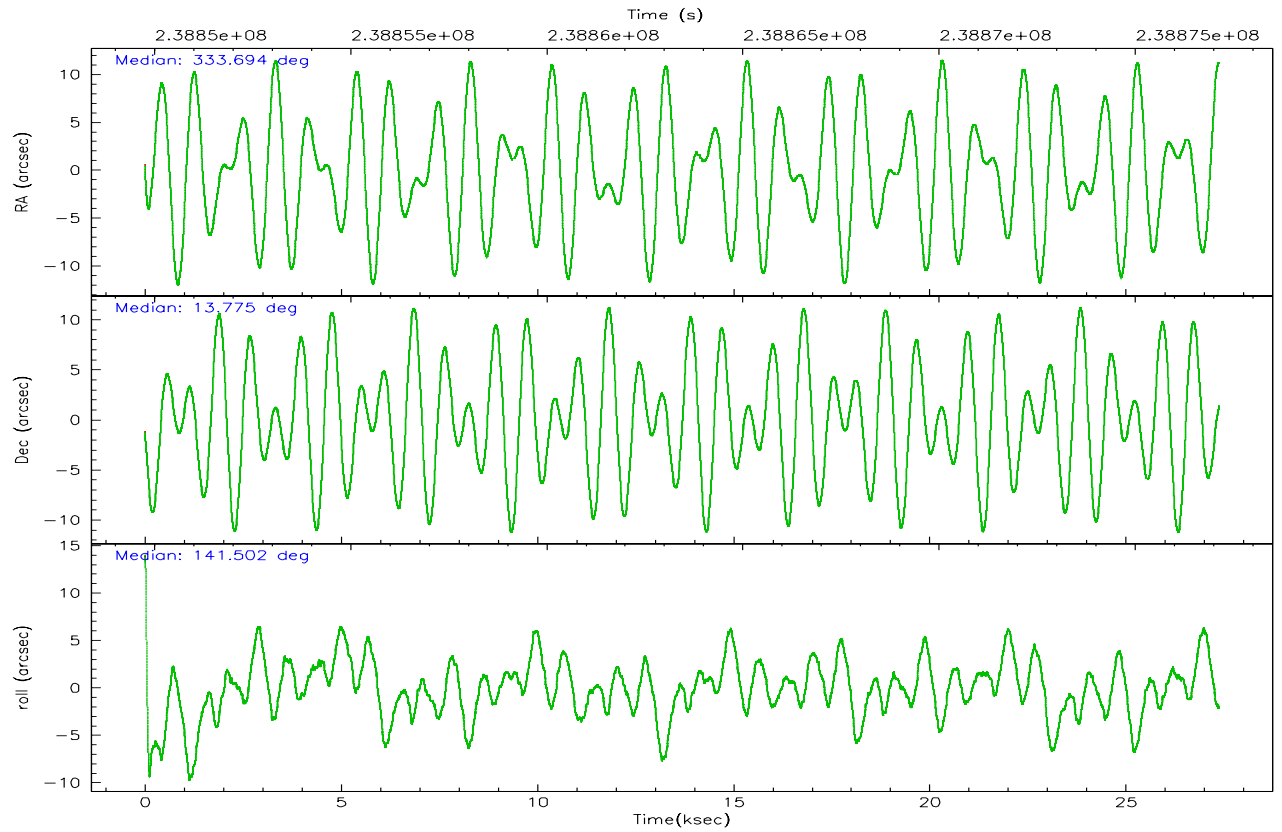
	ccd 0	ccd 1	ccd 2	ccd 3	ccd 6
grade 0 events	20127	15978	17358	16221	13764
	8%	7%	7%	6%	5%
grade 1 events	202	141	197	183	120
	0%	0%	0%	0%	0%
grade 2 events	7541	7849	6675	6272	6678
	3%	3%	2%	2%	2%
grade 3 events	3185	3091	2968	2846	2839
	1%	1%	1%	1%	1%
grade 4 events	2969	3054	2992	2955	2740
	1%	1%	1%	1%	1%
grade 5 events	9390	9722	8976	10367	10462
	4%	4%	3%	4%	4%
grade 6 events	5793	6589	5225	5565	6495
	2%	2%	2%	2%	2%
grade 7 events	175550	173331	197382	192014	193266
	78%	78%	81%	81%	81%

2.2 Compared Parameters

Parameter	Planned	Actual	Parameter	Planned	Actual
Instrument	ACIS	ACIS	Obspar format version number	6	6
Detector	ACIS-01236	ACIS-01236	Obspar file type	PREDICTED	ACTUAL
Grating	NONE	NONE	Obspar update status	NONE	UPDATED
Data mode	VFAINT	VFAINT	On-chip summing requested	N	N
Observation mode	POINTING	POINTING	Subarray requested	NONE	NONE
Pointing RA	333.721449	333.6935657180833	Alternating exposures requested	N	N
Pointing Dec	13.771246	13.77515418116192	Primary exposure time	0.000000	3.1
Pointing Roll	141.293904	141.509239413813			
SIM focus pos (mm)	-0.782348	-0.7809083437167272			
SIM defocus (mm)	0	0.001439871863259334			
SIM translation stage pos (mm)	-233.592463	-233.5874344608287			
SIM translation stage offset (mm)	0	-0.005018542100998502			
Observation start time	238849939.184000	238848344.00153			
Observation start date	2005-07-27T11:11:15	2005-07-27T10:45:44			
Observation end time	238877132.184000	238878496.94041			
Observation end date	2005-07-27T18:44:28	2005-07-27T19:08:16			
Read mode	TIMED	TIMED			

2.3 Aspect



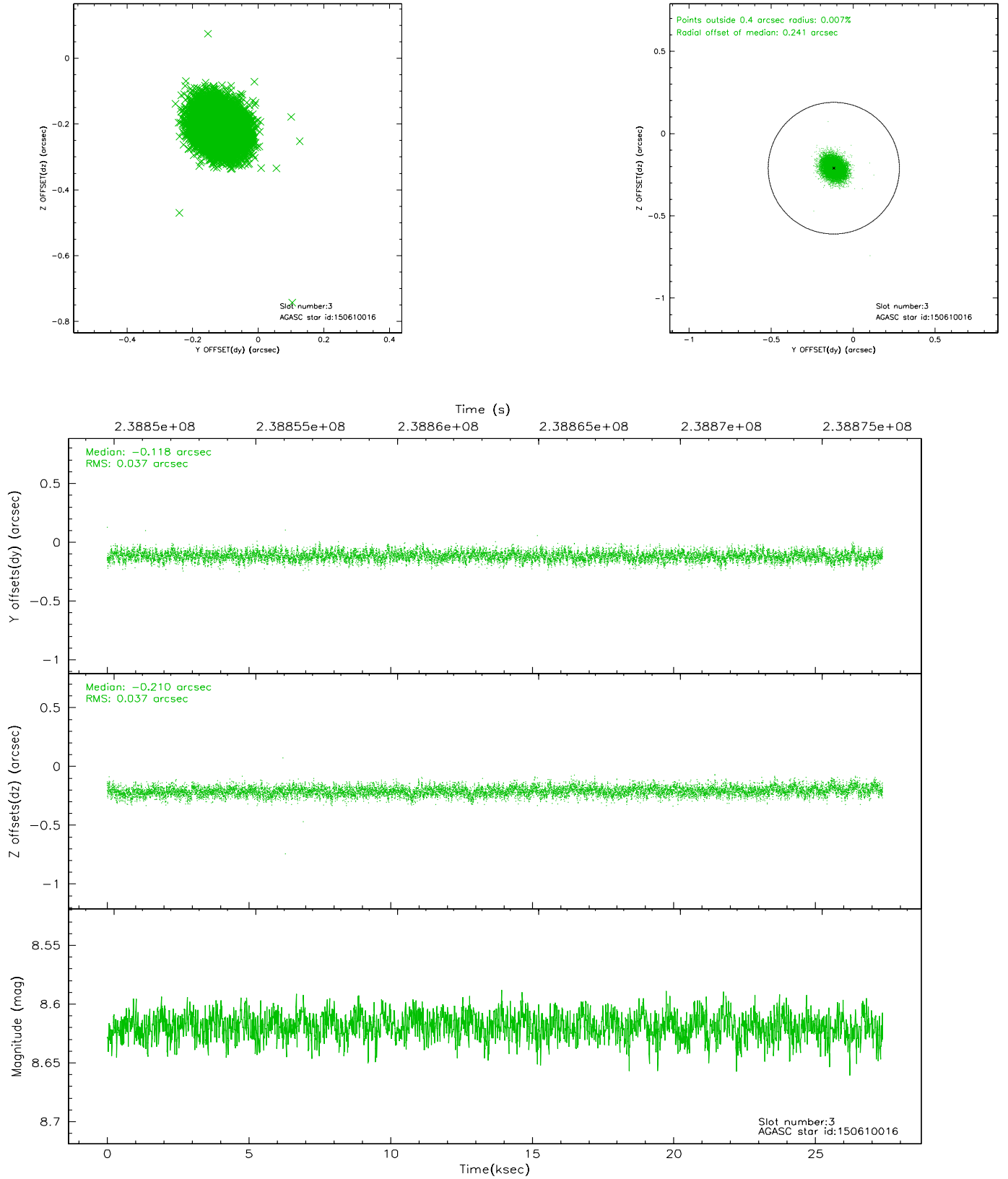


Slot Statistics

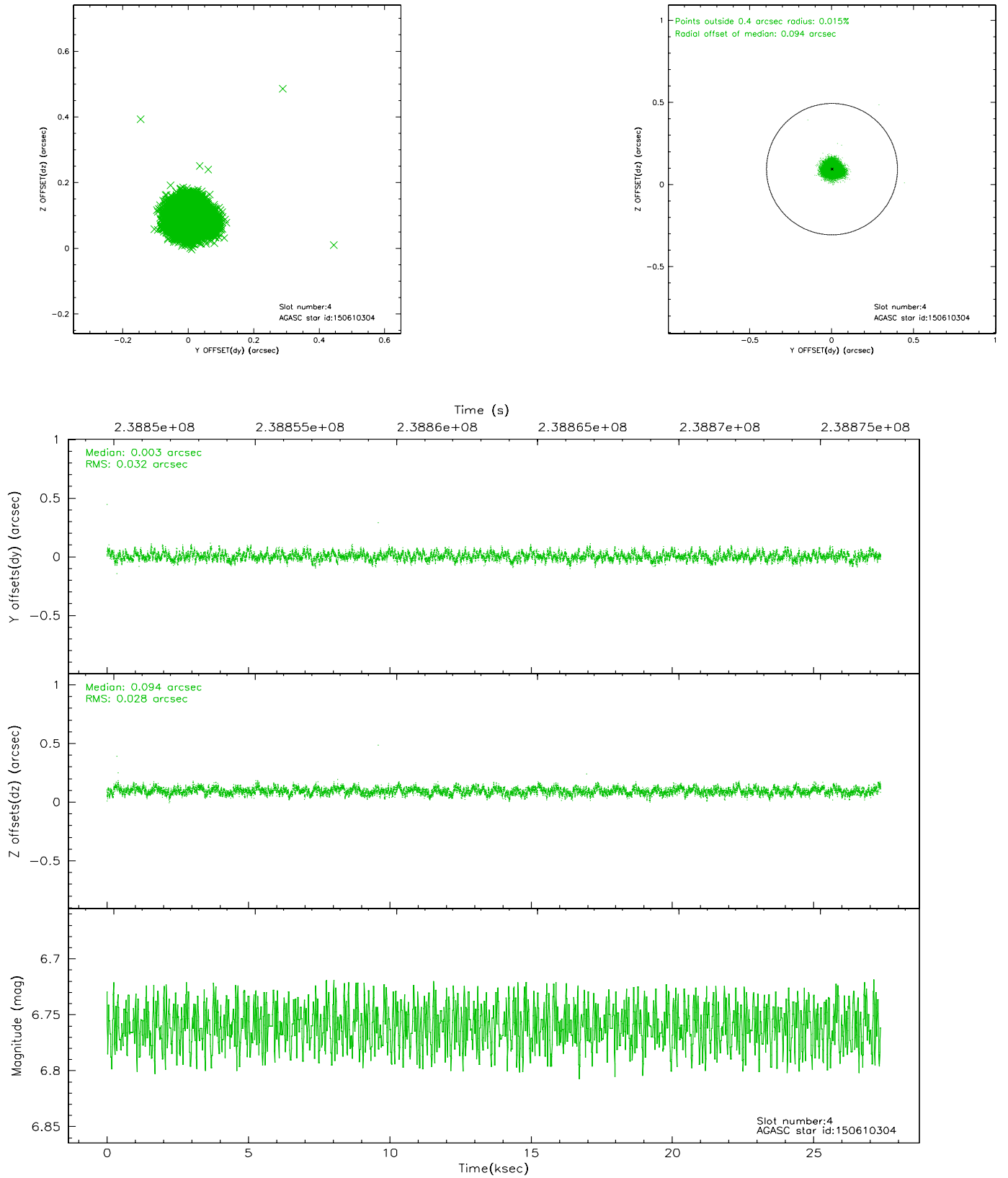
slot	status	id	mag	n_pts	med_dy	med_dz	dr1	dr2	ra	dec	mean_y	mean_z
0	FID	ACIS-I-1	7.24	6677	-0.008	0.037	0.007	0.012	0.000000	0.000000	932.20	-833.43
1	FID	ACIS-I-5	7.23	6677	-0.140	0.021	0.007	0.013	0.000000	0.000000	-1816.00	1063.99
2	FID	ACIS-I-6	7.25	6676	0.057	0.012	0.007	0.012	0.000000	0.000000	397.69	1708.60
3	GUIDE	150610016	8.62	13349	-0.118	-0.210	0.056	0.091	333.607680	13.272180	-812.57	1651.28
4	GUIDE	150610304	6.76	13353	0.003	0.094	0.045	0.071	334.517012	13.950326	-1763.06	-2244.73
5	GUIDE	150614840	8.69	13349	0.126	0.020	0.080	0.131	333.996804	13.803587	-677.80	-693.15
6	GUIDE	150606032	8.76	13307	-0.052	-0.068	0.069	0.113	333.468551	13.881130	937.43	244.00
7	GUIDE	150605048	8.31	13352	0.039	0.169	0.066	0.108	334.582600	13.956006	-1928.00	-2404.42

2.4 Star Slots

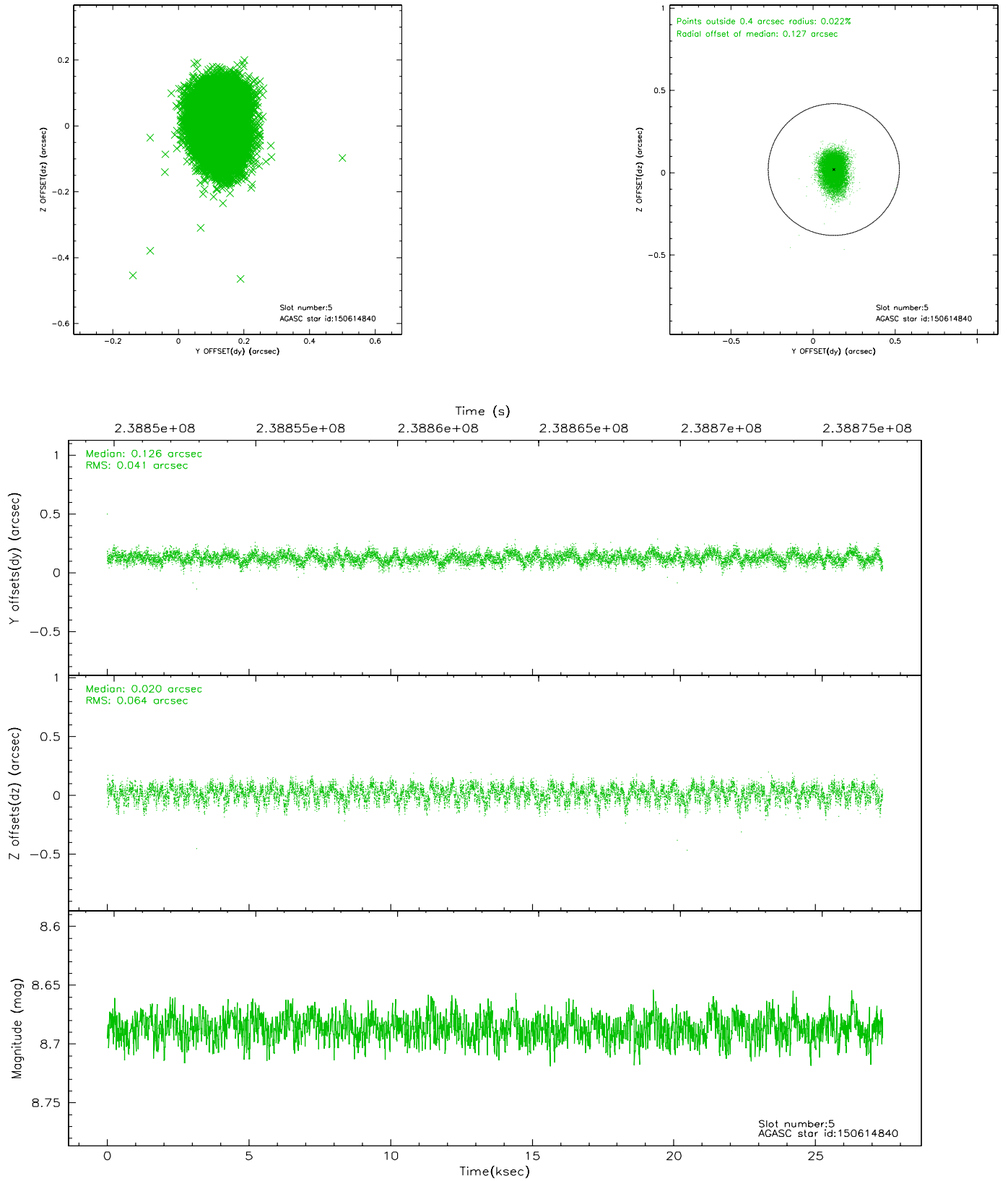
2.4.1 Slot 3



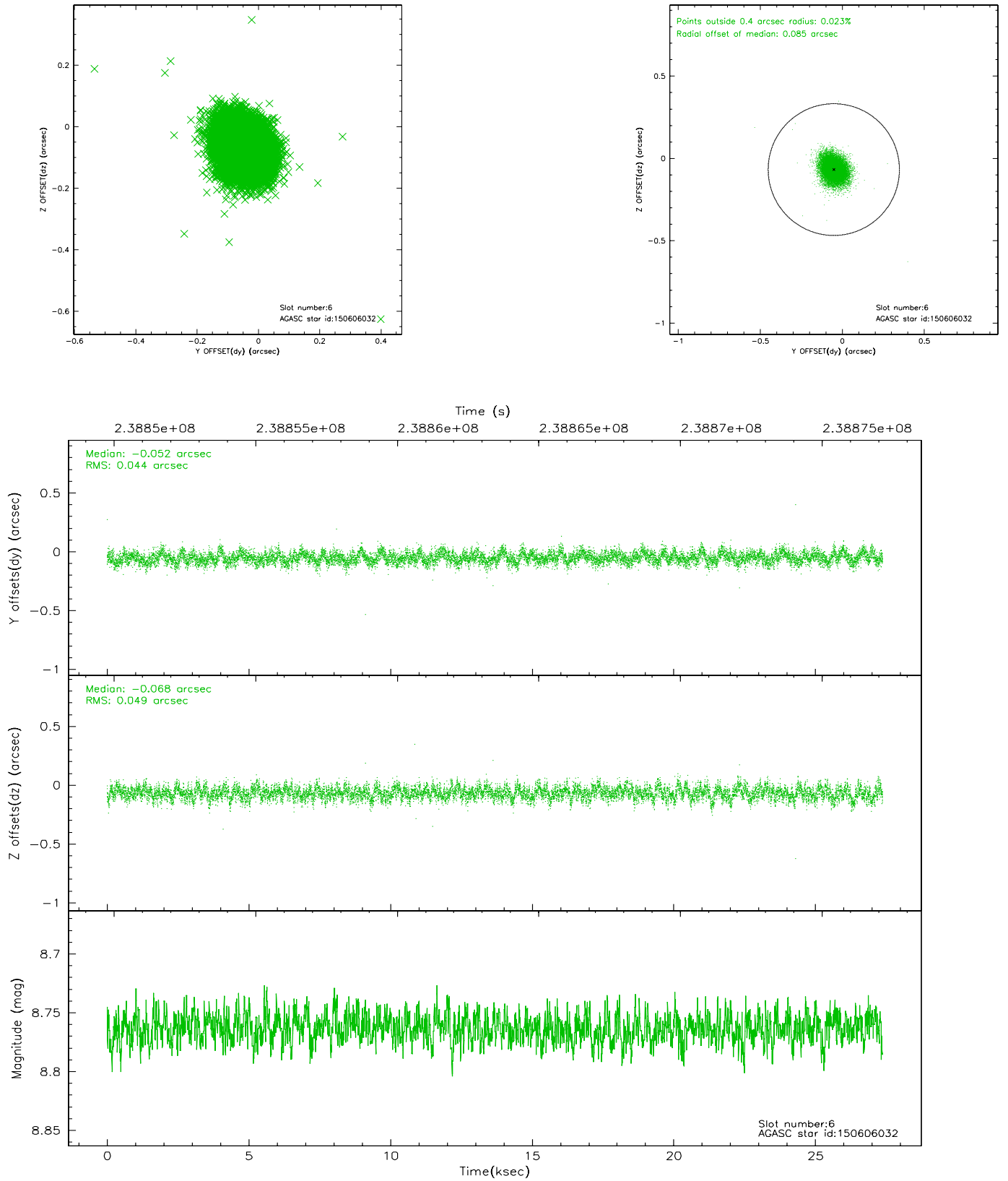
2.4.2 Slot 4



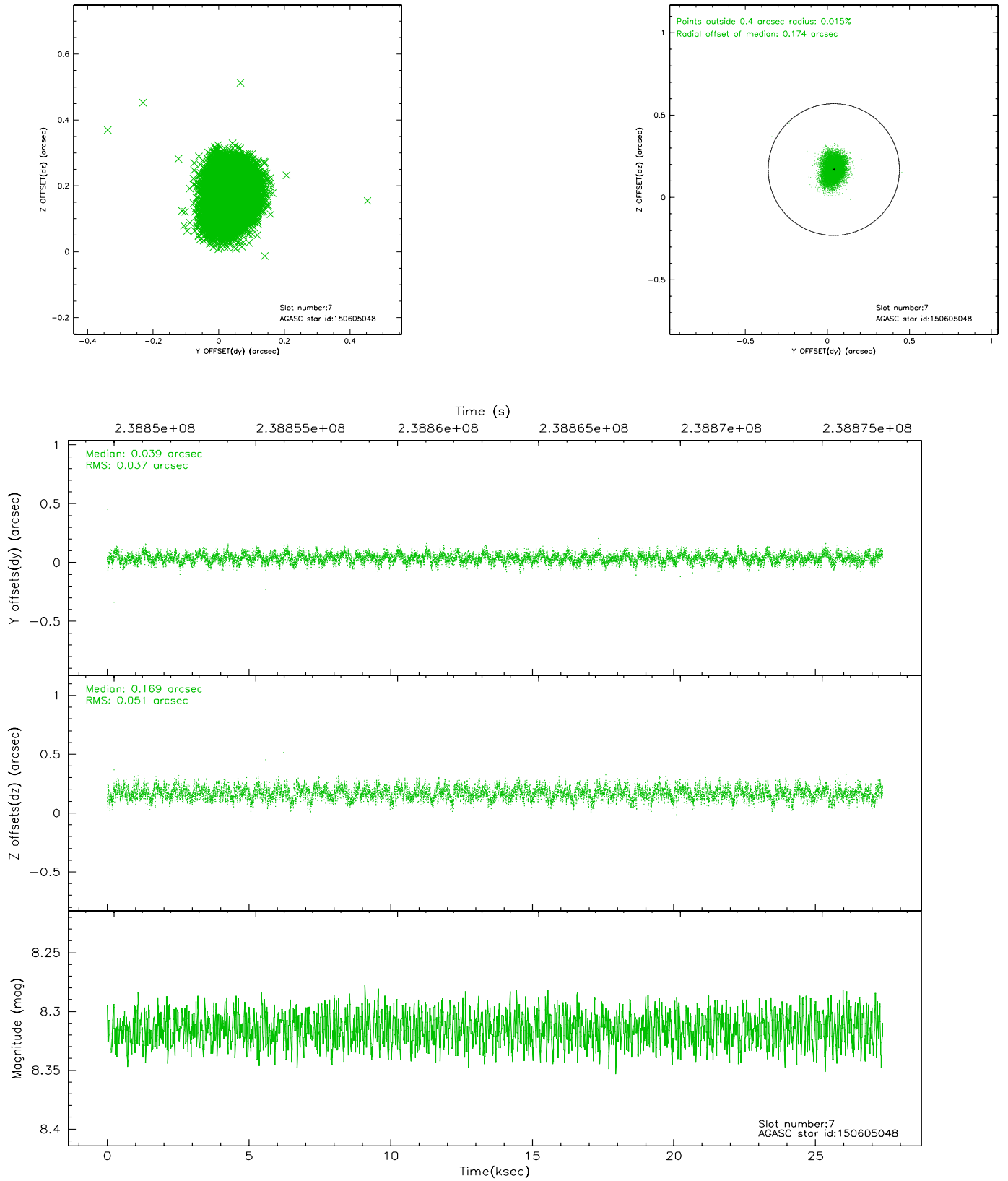
2.4.3 Slot 5



2.4.4 Slot 6

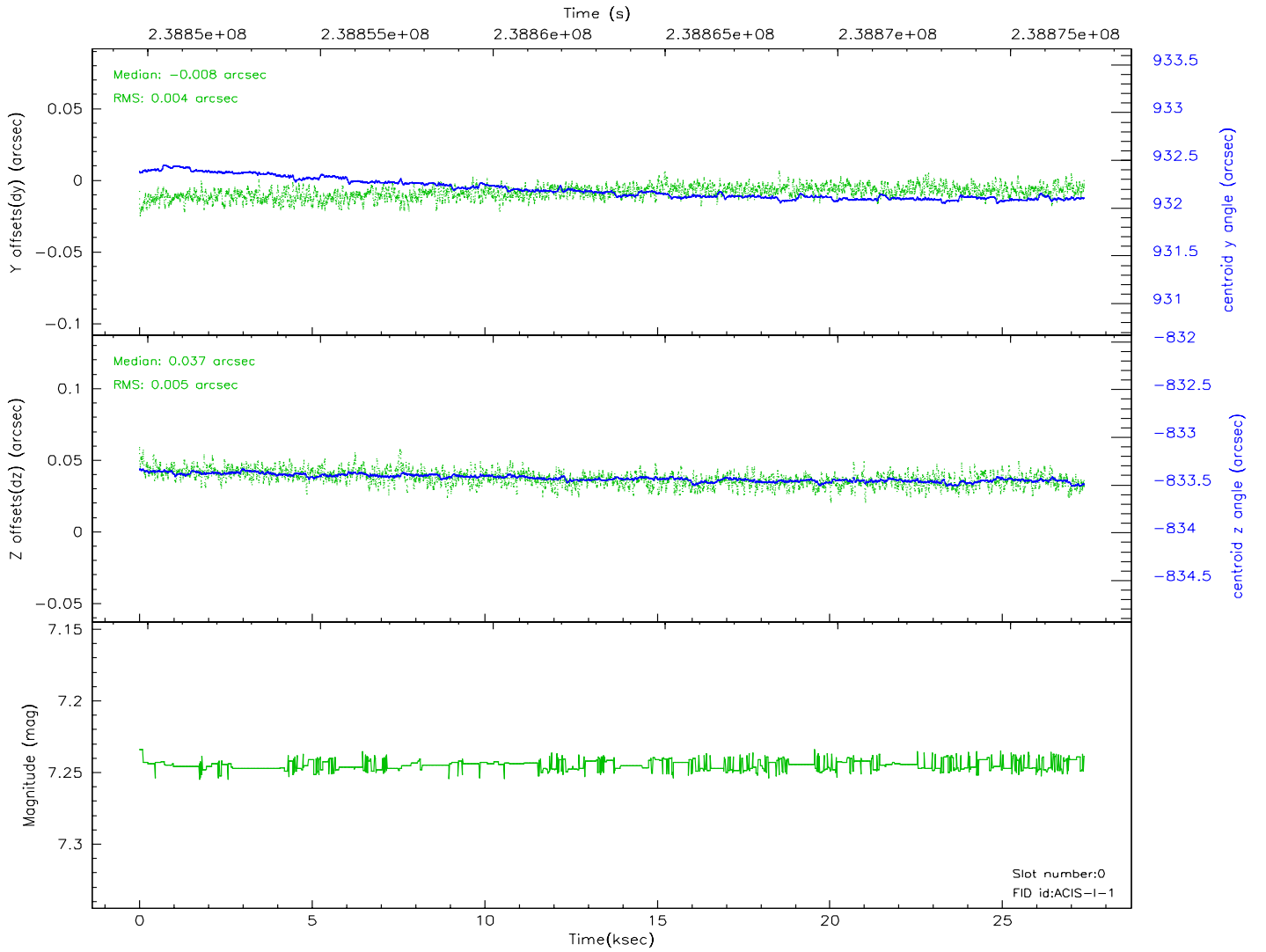
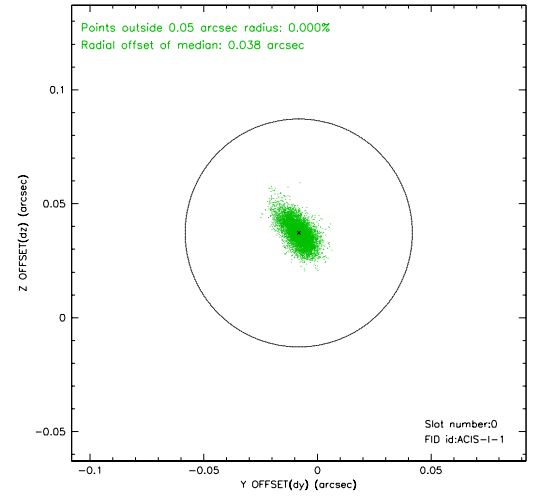
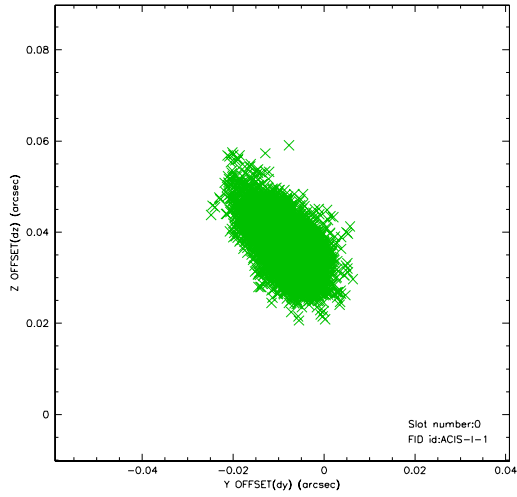


2.4.5 Slot 7

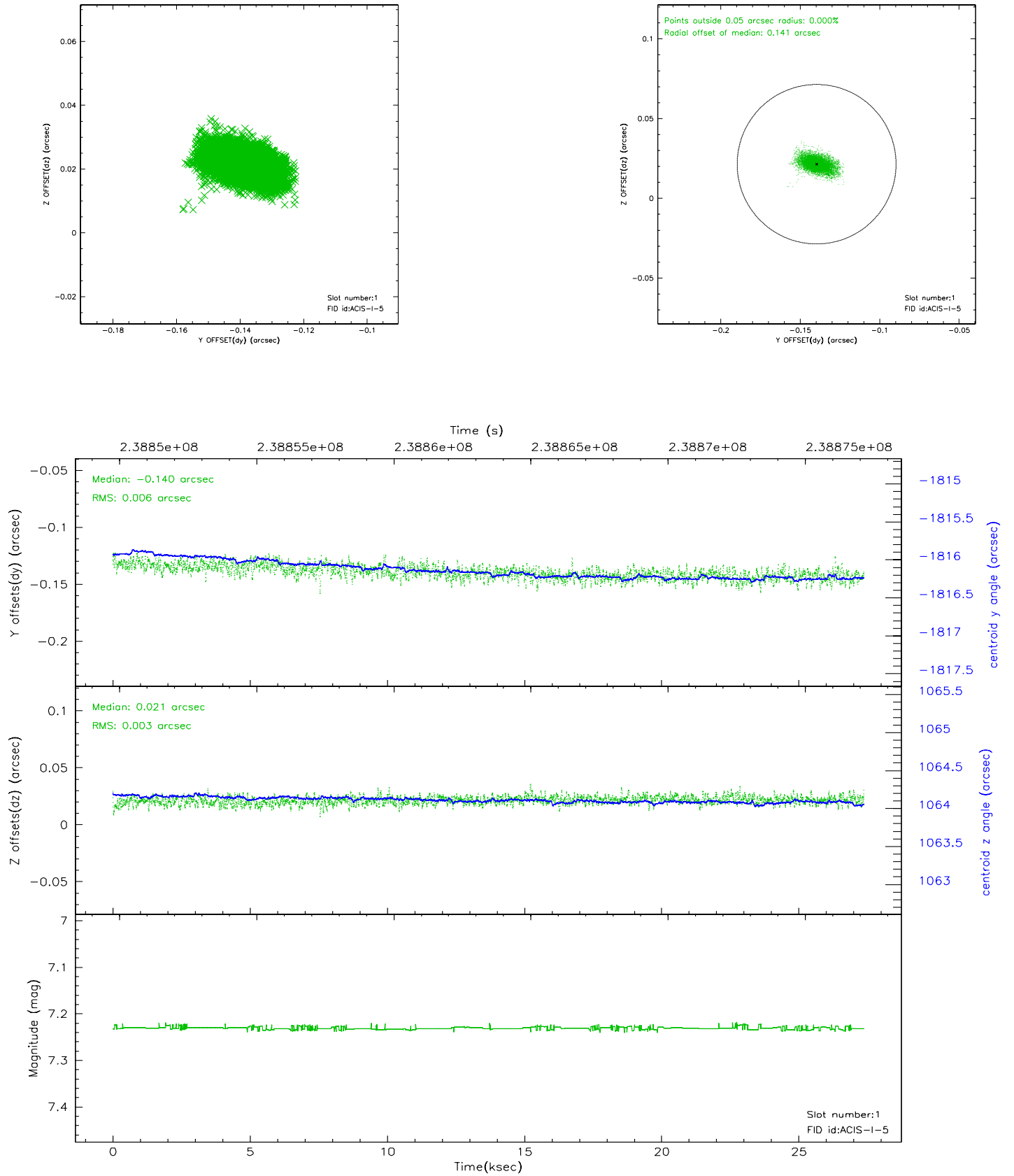


2.5 FID Slots

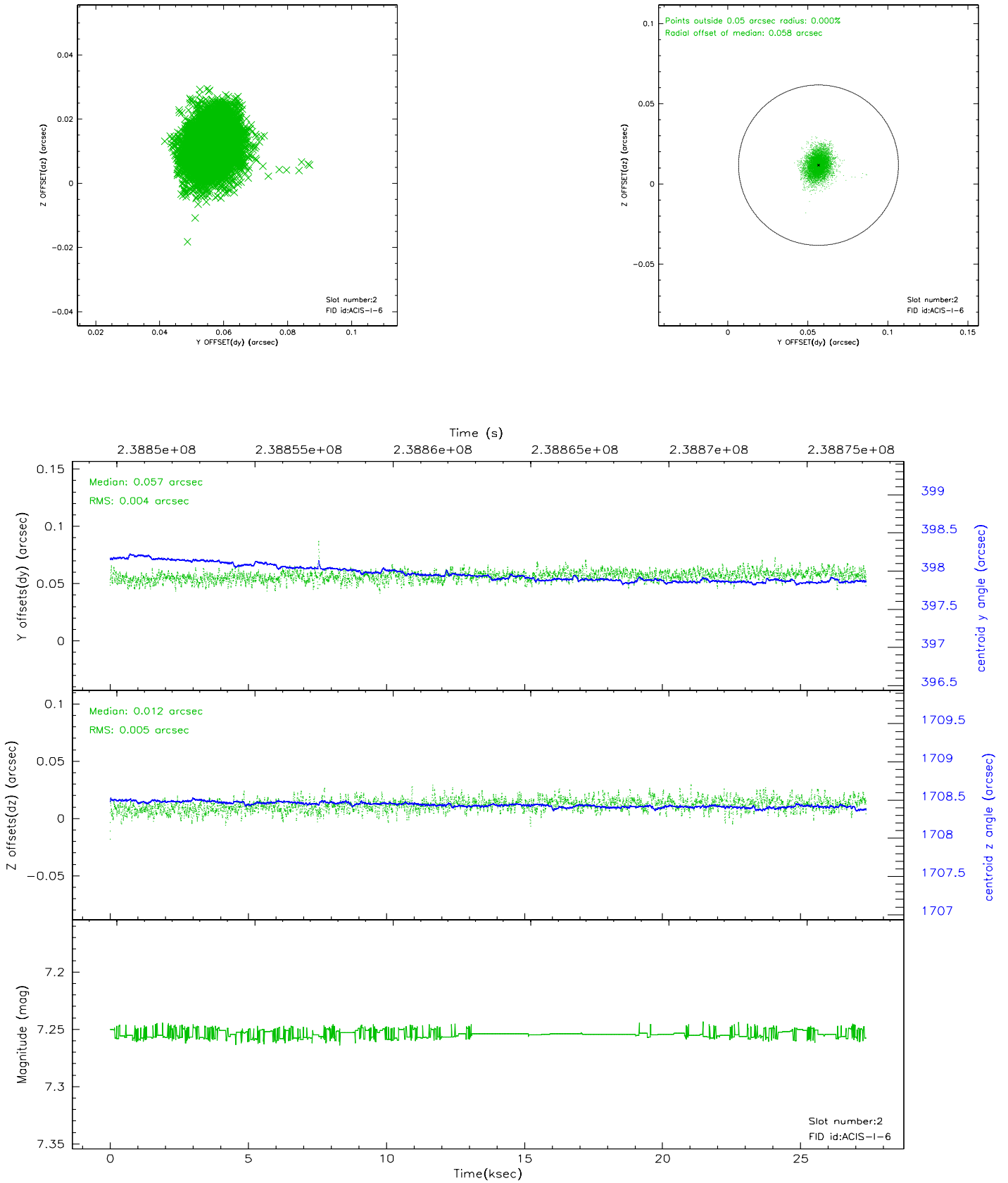
2.5.1 Slot 0



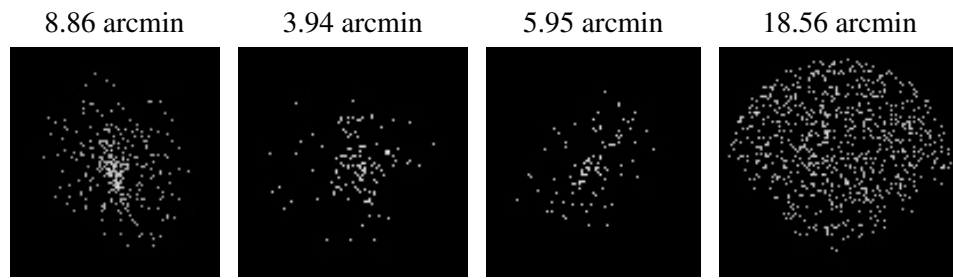
2.5.2 Slot 1



2.5.3 Slot 2



3 Point Sources



A Summary

A.1 Status

V&V Scientist	Jen Lauer
V&V Date (YYYY-MM-DD)	2006.03.16
V&V Edition	1
V&V Disposition and Status	OK
V&V Charge Time	28.57379

A.2 Comments