

# V&V Reference Report

## L2 ASCDS Version : 7.6.7.1

Observation 5633 - L2 Version 002  
Chandra X-Ray Center

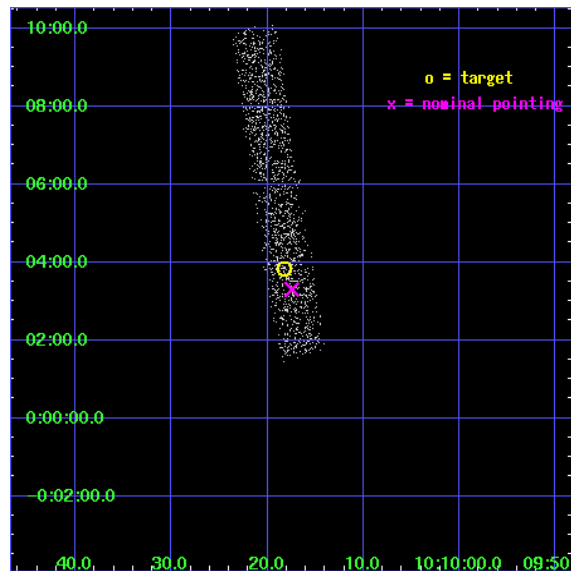
L2 Processing Date : Mar 17 2006

## Contents

<b>1</b>	<b>Front</b>	<b>2</b>
<b>2</b>	<b>OBI</b>	<b>3</b>
2.1	OBI . . . . .	3
2.1.1	Images . . . . .	3
2.1.2	Bias . . . . .	3
2.1.3	Parameters . . . . .	4
2.1.4	Events . . . . .	4
2.2	Compared Parameters . . . . .	5
2.3	Aspect . . . . .	6
2.4	Star Slots . . . . .	9
2.4.1	Slot 3 . . . . .	9
2.4.2	Slot 4 . . . . .	10
2.4.3	Slot 5 . . . . .	11
2.4.4	Slot 6 . . . . .	12
2.4.5	Slot 7 . . . . .	13
2.5	FID Slots . . . . .	14
2.5.1	Slot 0 . . . . .	14
2.5.2	Slot 1 . . . . .	15
2.5.3	Slot 2 . . . . .	16
<b>3</b>	<b>Point Sources</b>	<b>17</b>
<b>A</b>	<b>Summary</b>	<b>18</b>
A.1	Status . . . . .	18
A.2	Comments . . . . .	18

# 1 Front

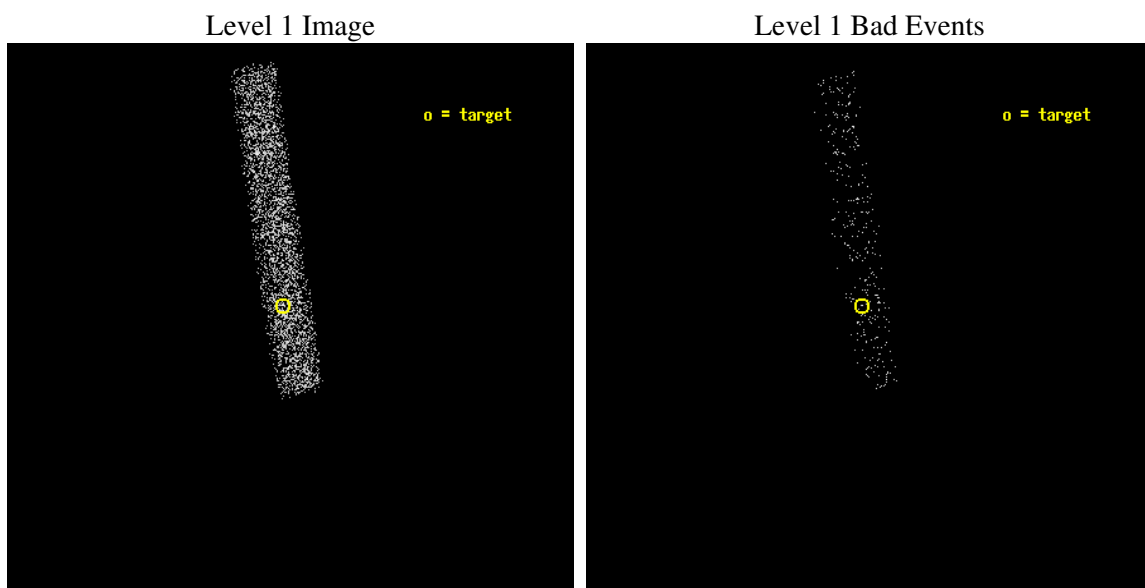
seq_num	701056
obs_id	5633
title	Alpha Element Enrichment in Damped Lyman Alpha Absorbers: Survey for New Targets
observer	Dr. Jill Bechtold
object	SDSS J101018.19+000351.3
dtcycle	0
cycle	P
ra_targ	152.575833
dec_targ	0.064167
ra_nom	152.57280221731
dec_nom	0.054955684885368
roll_nom	261.43004795886
revision	2
ontime	3180.8000473976
livetime	2884.8177465968
ontime7	3180.8000473976
l2events	1699



## 2 OBI

### 2.1 OBI

#### 2.1.1 Images



#### 2.1.2 Bias

Chip 7



### 2.1.3 Parameters

obi_num	0
ascdsver	7.6.7.1
caldbver	3.2.1
date	2006-03-17T23:18:18
revision	2

sched_exp_time	3000.000000
ontime	3590.0292425752
ontime7	3590.0292425752
l1events	4805

### 2.1.4 Events

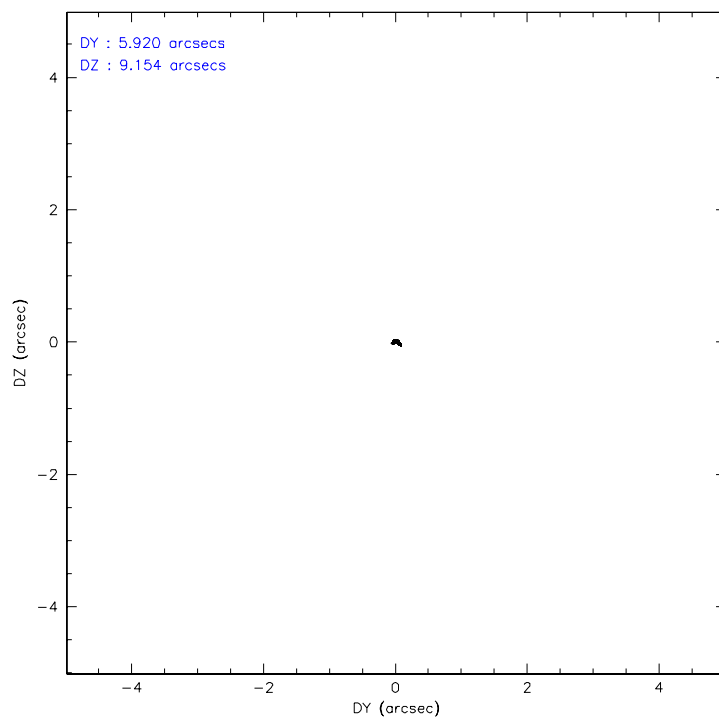
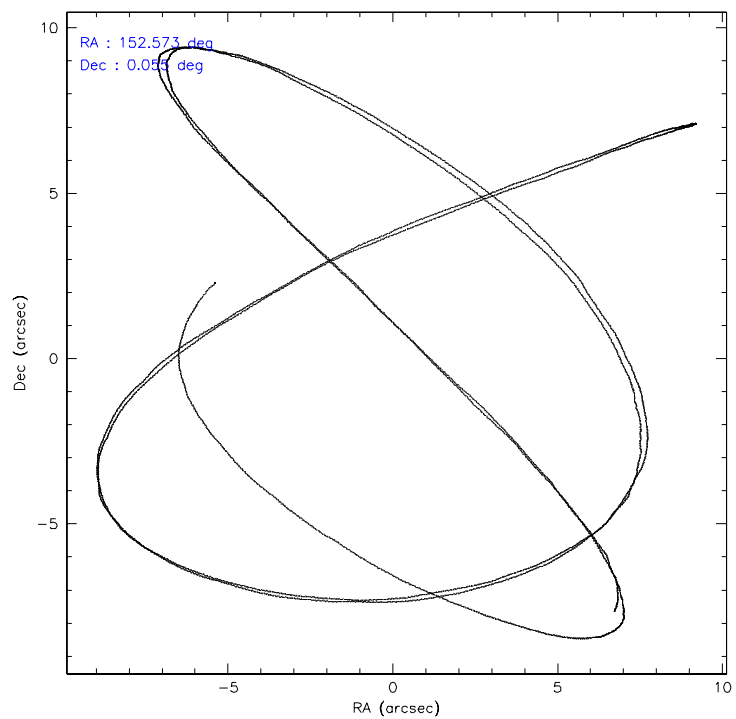
	<b>ccd 7</b>
level 1 events	4805
rejected events	3024
rejected %	62%

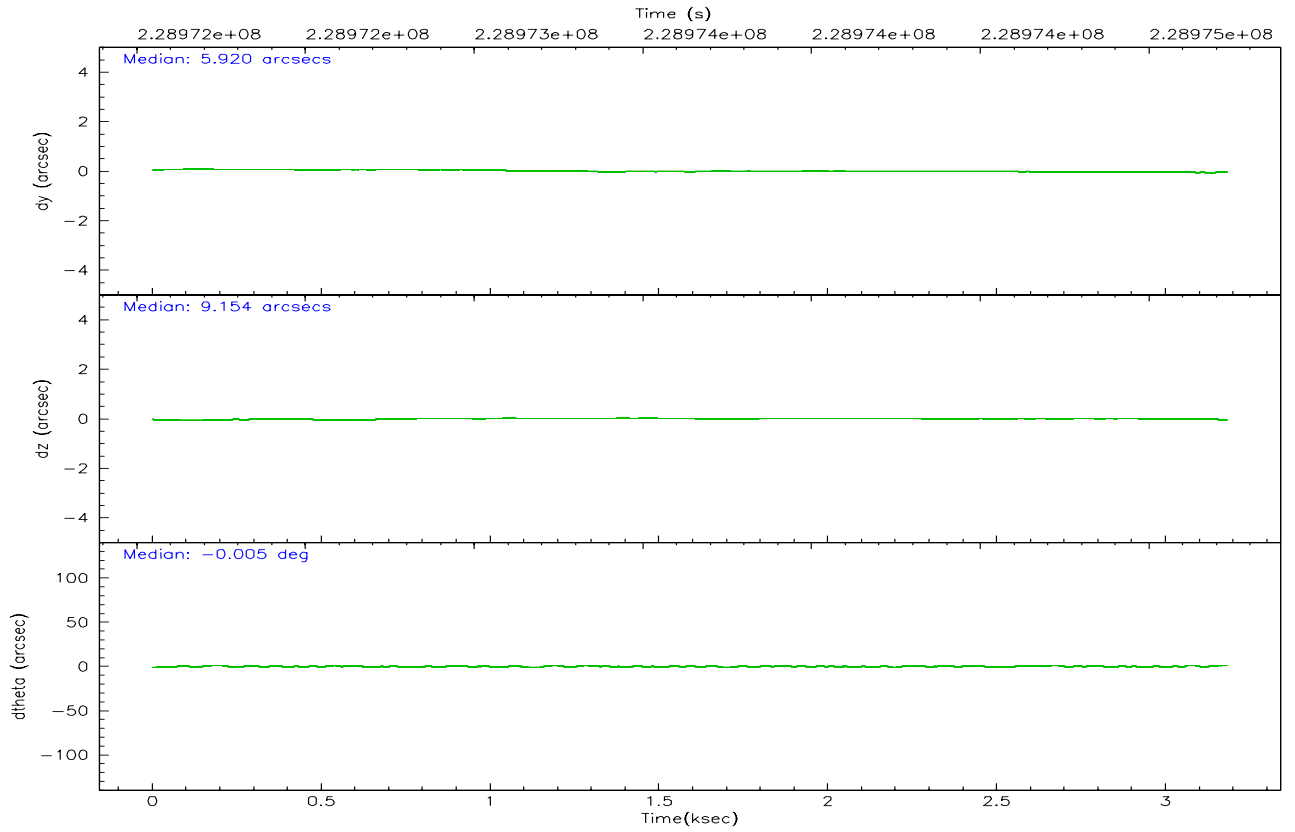
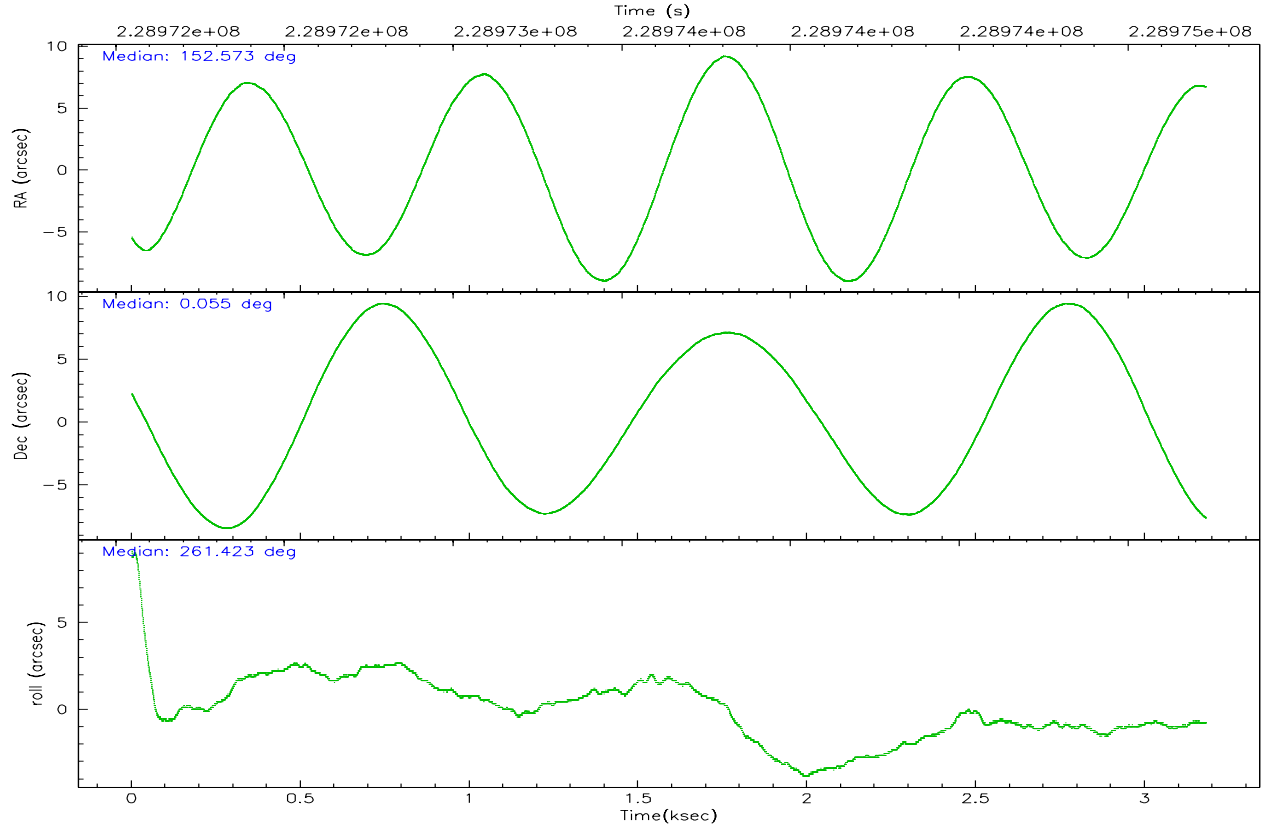
	<b>ccd 7</b>
grade 0 events	132
	2%
grade 1 events	5
	0%
grade 2 events	447
	9%
grade 3 events	197
	4%
grade 4 events	188
	3%
grade 5 events	341
	7%
grade 6 events	1038
	21%
grade 7 events	2457
	51%

## 2.2 Compared Parameters

Parameter	Planned	Actual	Parameter	Planned	Actual
Instrument	ACIS	ACIS	Obspar format version number	6	6
Detector	ACIS-7	ACIS-7	Obspar file type	PREDICTED	ACTUAL
Grating	NONE	NONE	Obspar update status	NONE	UPDATED
Data mode	VFAINT	VFAINT	On-chip summing requested	N	N
Observation mode	POINTING	POINTING	Subarray requested	CUSTOM	1/8
Pointing RA	152.562447	152.5728022173072	Subarray start row	449	449
Pointing Dec	0.080222	0.05495568488536832	Subarray row count	128	128
Pointing Roll	261.273390	261.4300479588562	Alternating exposures requested	N	N
SIM focus pos (mm)	-0.684267	-0.6828225247311905	Primary exposure time	0.000000	0.4
SIM defocus (mm)	0	0.001444936568705701			
SIM translation stage pos (mm)	-190.132523	-190.1400660498719			
SIM translation stage offset (mm)	0	0.00754346686406393			
Observation start time	228972231.184000	228971405.11356			
Observation start date	2005-04-04T03:22:47	2005-04-04T03:10:05			
Observation end time	228975231.184000	228976045.80127			
Observation end date	2005-04-04T04:12:47	2005-04-04T04:27:25			
Read mode	TIMED	TIMED			

## 2.3 Aspect





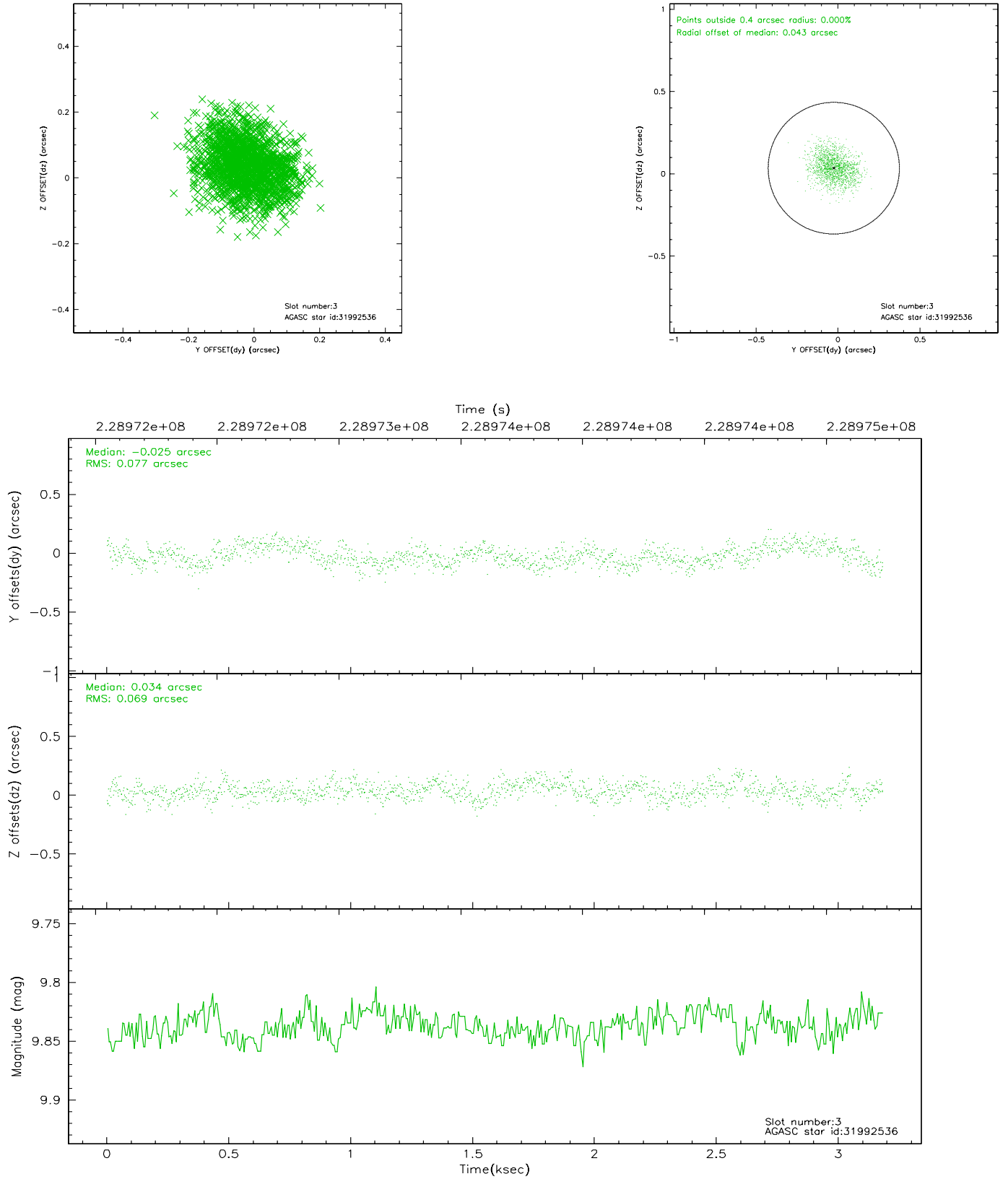
### Slot Statistics

slot	status	id	mag	n_pts	med_dy	med_dz	dr1	dr2	ra	dec	mean_y	mean_z
0	FID	ACIS-S-1	7.18	776	-0.007	0.006	0.006	0.011	0.000000	0.000000	937.36	-1726.01
1	FID	ACIS-S-4	7.20	776	0.056	0.003	0.006	0.010	0.000000	0.000000	2155.96	176.08
2	FID	ACIS-S-5	7.23	776	-0.077	0.003	0.005	0.010	0.000000	0.000000	-1808.99	171.97
3	GUIDE	31992536	9.84	1553	-0.025	0.034	0.114	0.173	152.492178	0.502547	-1464.08	-480.95
4	GUIDE	32113632	9.43	1553	0.043	0.042	0.102	0.172	153.009600	0.266662	-908.65	1488.90
5	GUIDE	642652800	8.70	1552	0.098	0.010	0.095	0.143	151.870568	-0.256860	1577.23	-2276.64
6	GUIDE	642781816	9.63	1551	0.108	0.120	0.116	0.183	152.509414	-0.089506	633.76	-97.64
7	GUIDE	31988016	8.94	1552	-0.230	-0.211	0.140	0.208	151.967682	0.697978	-1872.84	-2454.17

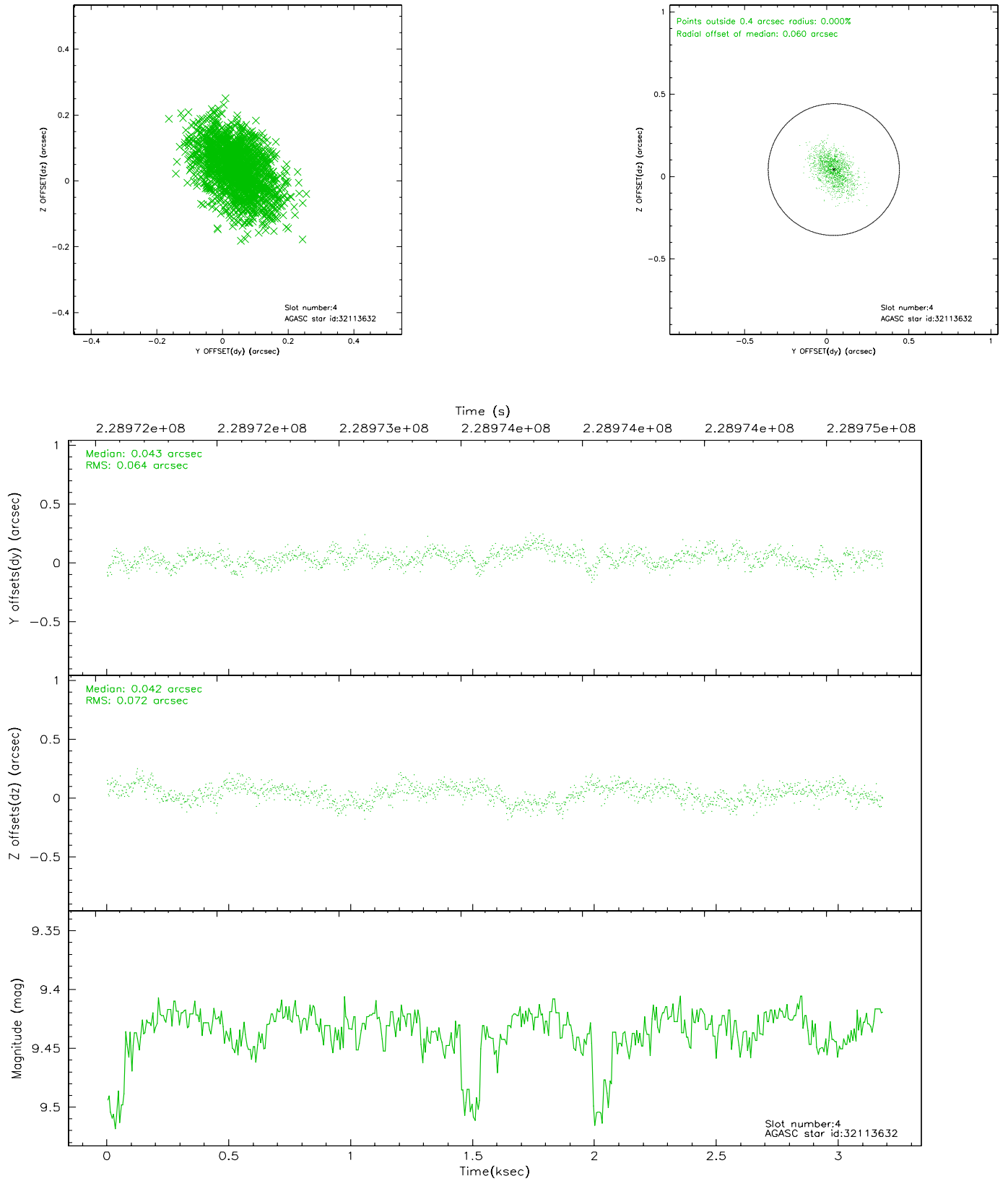


## 2.4 Star Slots

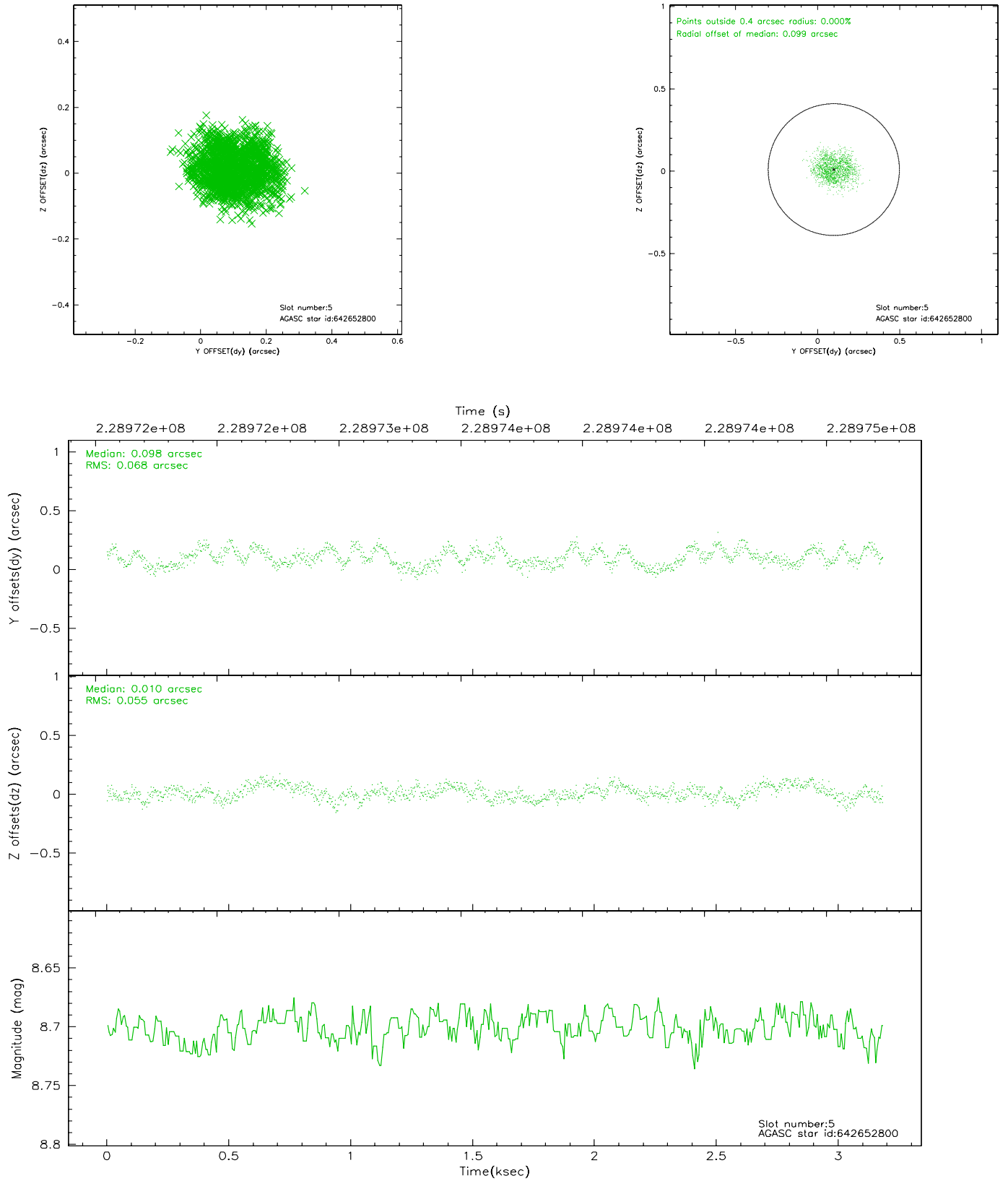
### 2.4.1 Slot 3



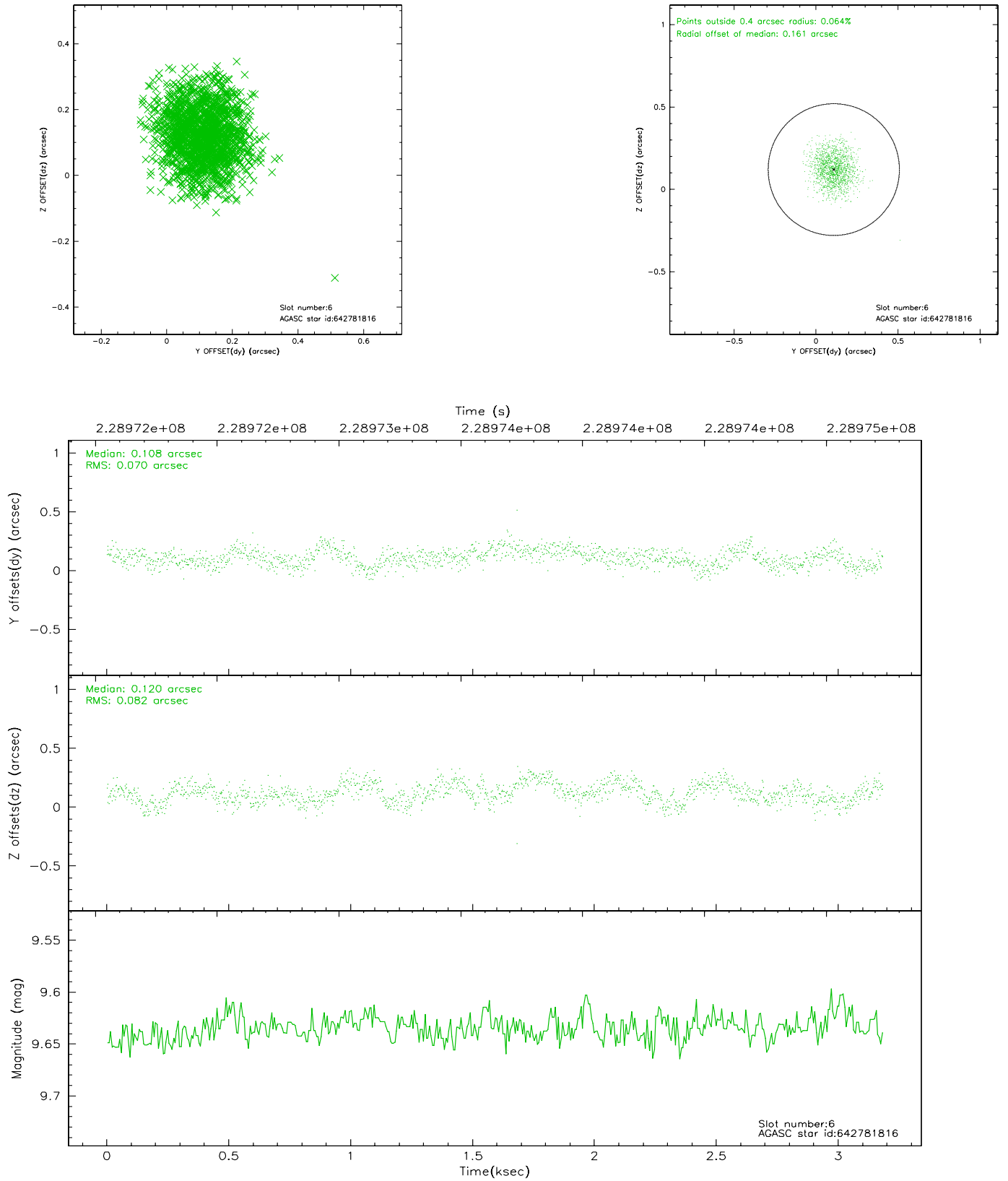
## 2.4.2 Slot 4



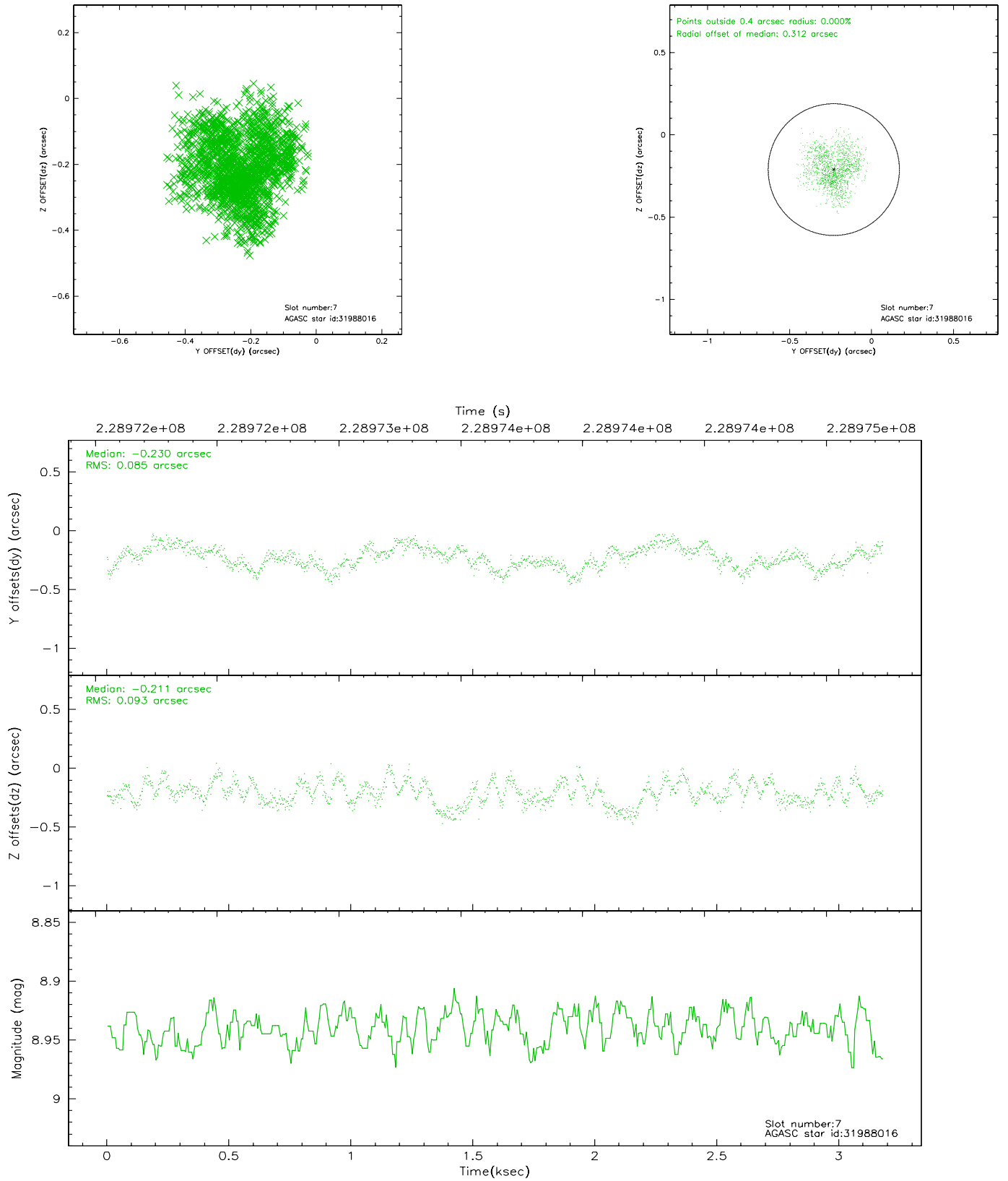
### 2.4.3 Slot 5



## 2.4.4 Slot 6

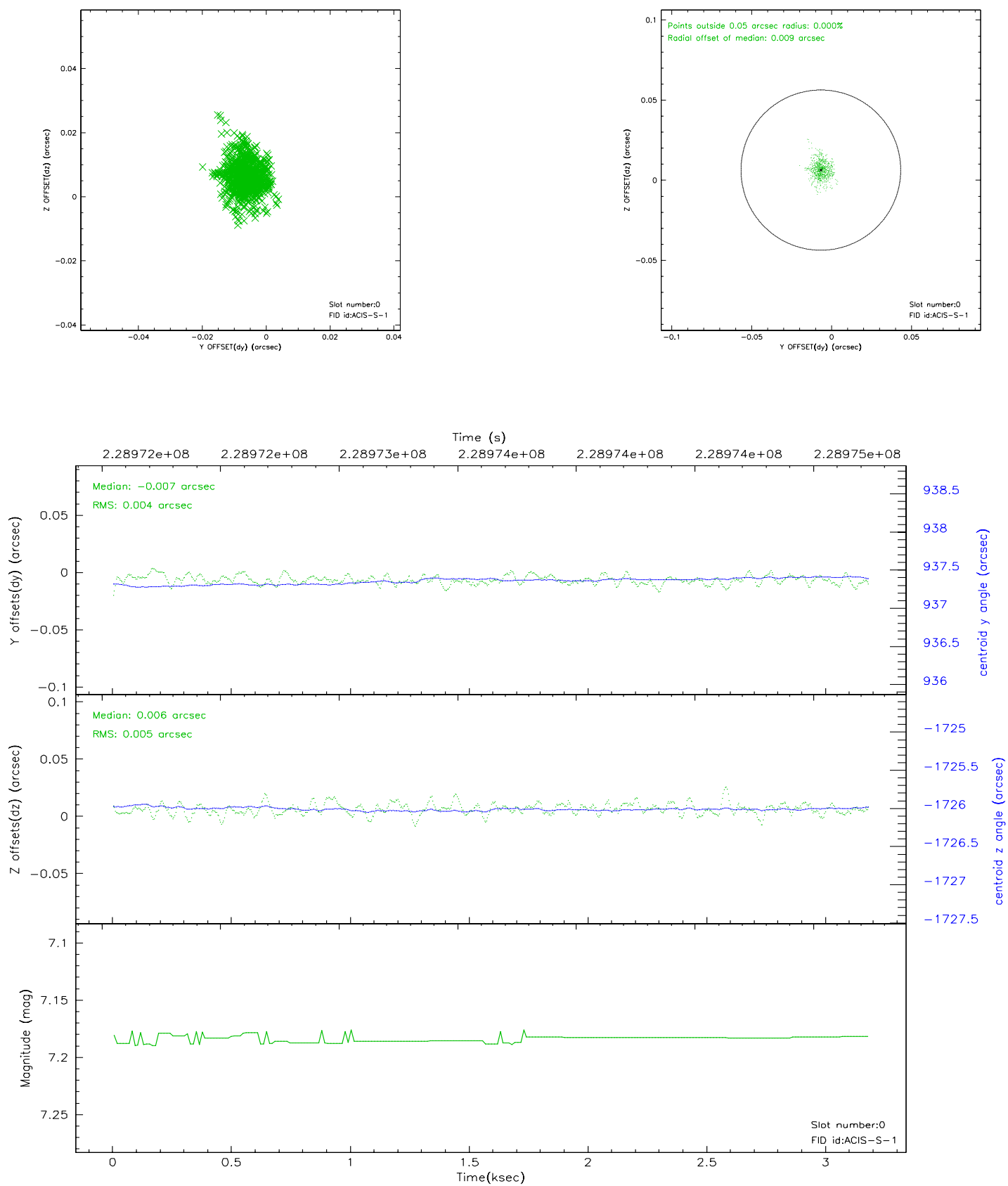


## 2.4.5 Slot 7

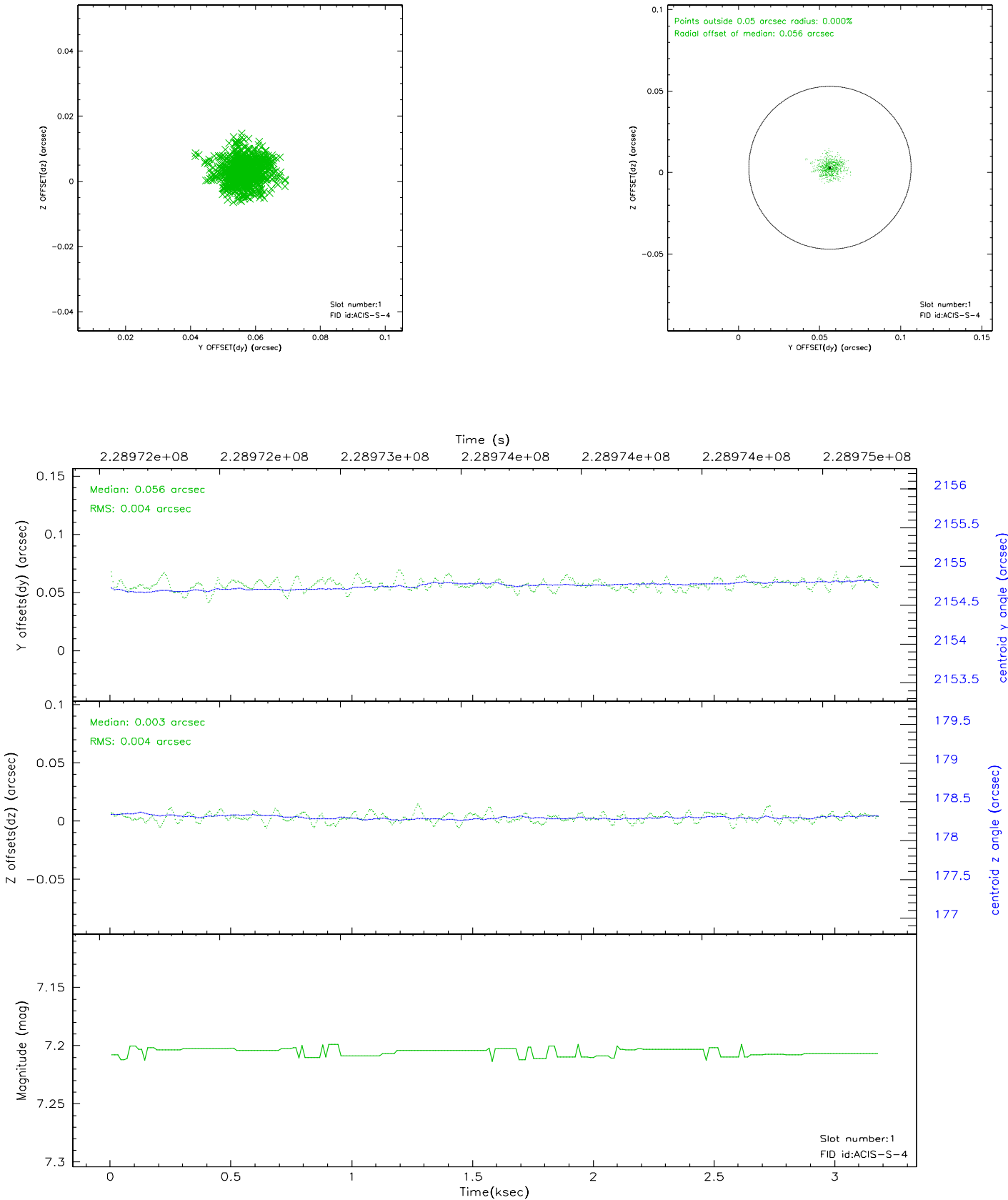


## 2.5 FID Slots

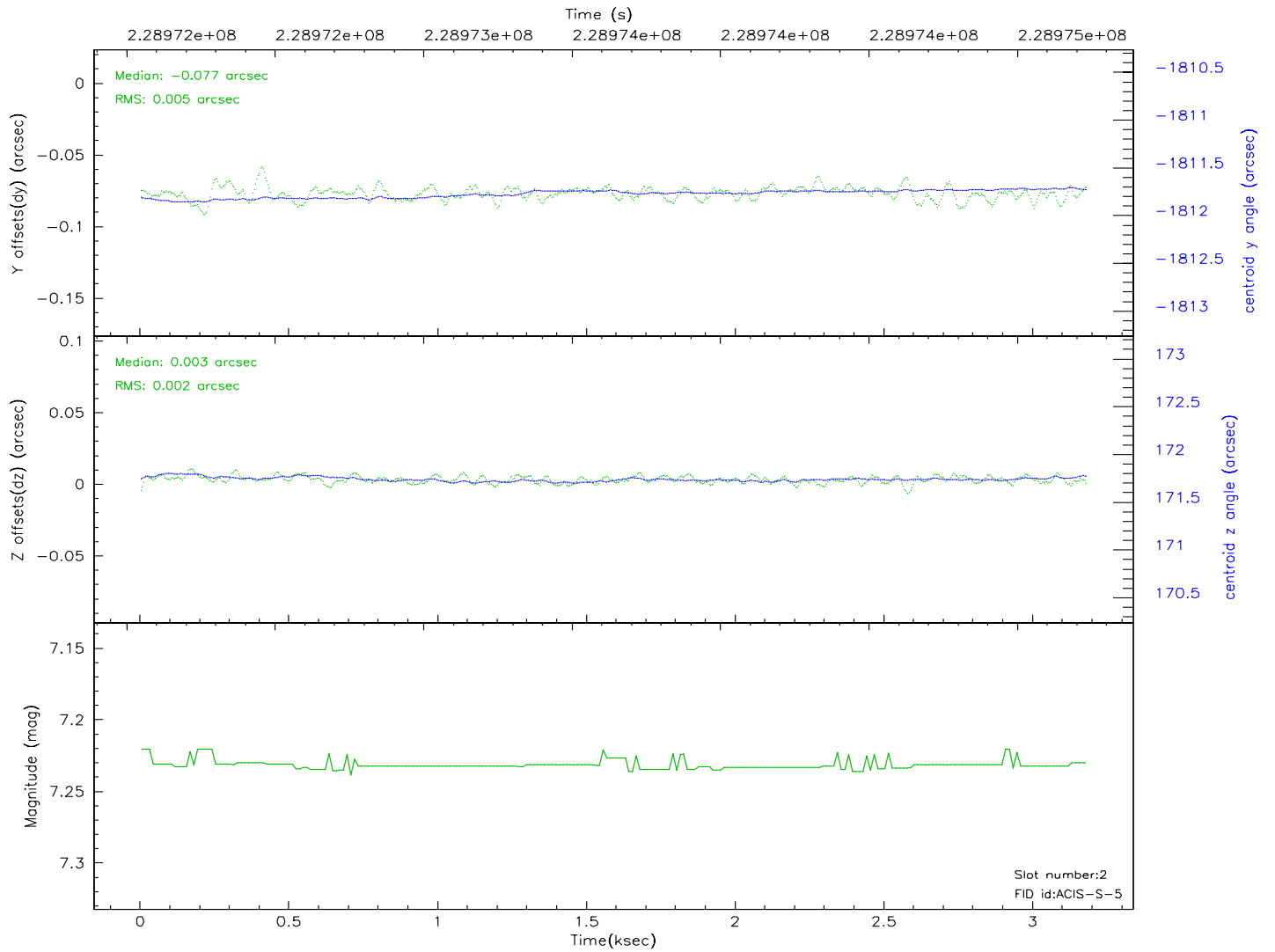
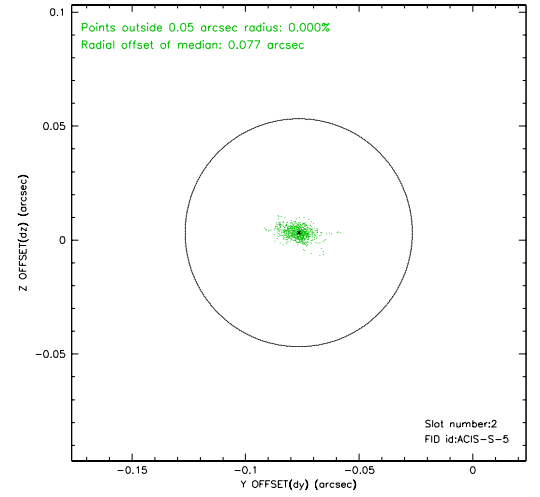
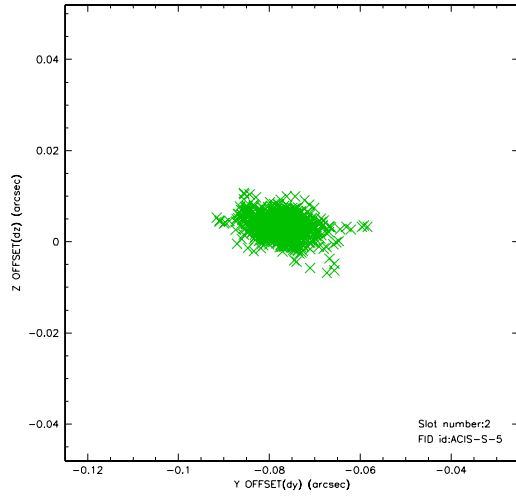
### 2.5.1 Slot 0



2.5.2 Slot 1



### 2.5.3 Slot 2





### 3 Point Sources

## A Summary

### A.1 Status

V&V Scientist	Jen Lauer
V&V Date (YYYY-MM-DD)	2006.03.20
V&V Edition	1
V&V Disposition and Status	OK
V&V Charge Time	3.1808

### A.2 Comments