

# V&V Reference Report

## L2 ASCDS Version : 8.5.0.1

Observation 5626 - L2 Version 3  
Chandra X-Ray Center

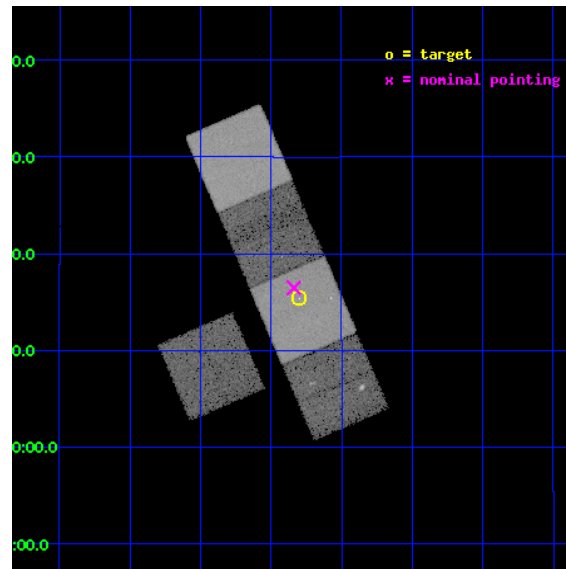
L2 Processing Date : Dec 12 2012

## Contents

<b>1</b>	<b>Front</b>	<b>2</b>
<b>2</b>	<b>OBI</b>	<b>3</b>
2.1	OBI . . . . .	3
2.1.1	Images . . . . .	3
2.1.2	Bias . . . . .	3
2.1.3	Parameters . . . . .	4
2.1.4	Events . . . . .	4
2.2	Compared Parameters . . . . .	5
2.3	Aspect . . . . .	6
2.4	Star Slots . . . . .	9
2.4.1	Slot 3 . . . . .	9
2.4.2	Slot 4 . . . . .	10
2.4.3	Slot 5 . . . . .	11
2.4.4	Slot 6 . . . . .	12
2.4.5	Slot 7 . . . . .	13
2.5	FID Slots . . . . .	14
2.5.1	Slot 0 . . . . .	14
2.5.2	Slot 1 . . . . .	15
2.5.3	Slot 2 . . . . .	16
<b>A</b>	<b>Summary</b>	<b>17</b>
A.1	Status . . . . .	17
A.2	Comments . . . . .	17

# 1 Front

seq_num	701049	Sequence number
obs_id	5626	Observation id
title	Extended inverse Compton emission from distant powerful radio galaxies	Proposal title
observer	Professor Andrew Fabian	Principal investigator
object	3C 191	Source name
dtcycle	0	&#160
cycle	P	events from which exps? Prim/Second/Both
ra_targ	121.199583	Observer's specified target RA [deg]
dec_targ	10.256389	Observer's specified target Dec [deg]
ra_nom	121.20950686191	Nominal RA [deg]
dec_nom	10.2747171032	Nominal Dec [deg]
roll_nom	66.737740448057	Nominal Roll [deg]
revision	3	Processing version of data
ontime	20035.299961448	Sum of GTIs [s]
livetime	19773.524017678	Livetime [s]
ontime3	20032.158981204	Sum of GTIs [s]
ontime5	20035.299961448	Sum of GTIs [s]
ontime6	20035.299961448	Sum of GTIs [s]
ontime7	20035.299961448	Sum of GTIs [s]
ontime8	20032.159050822	Sum of GTIs [s]
l2events	234918	Number of level 2 events

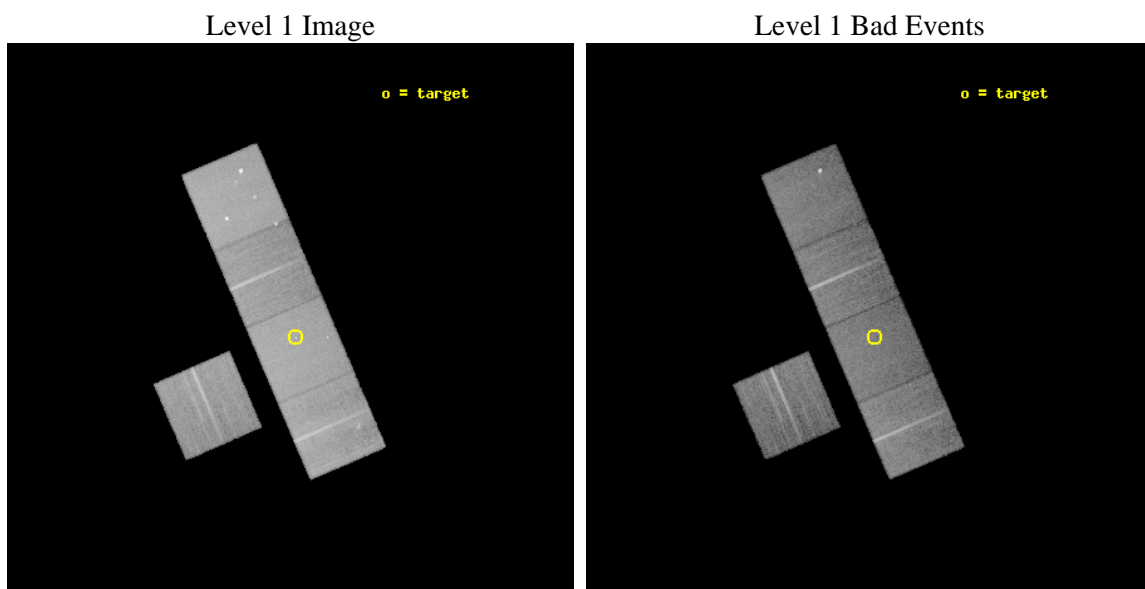




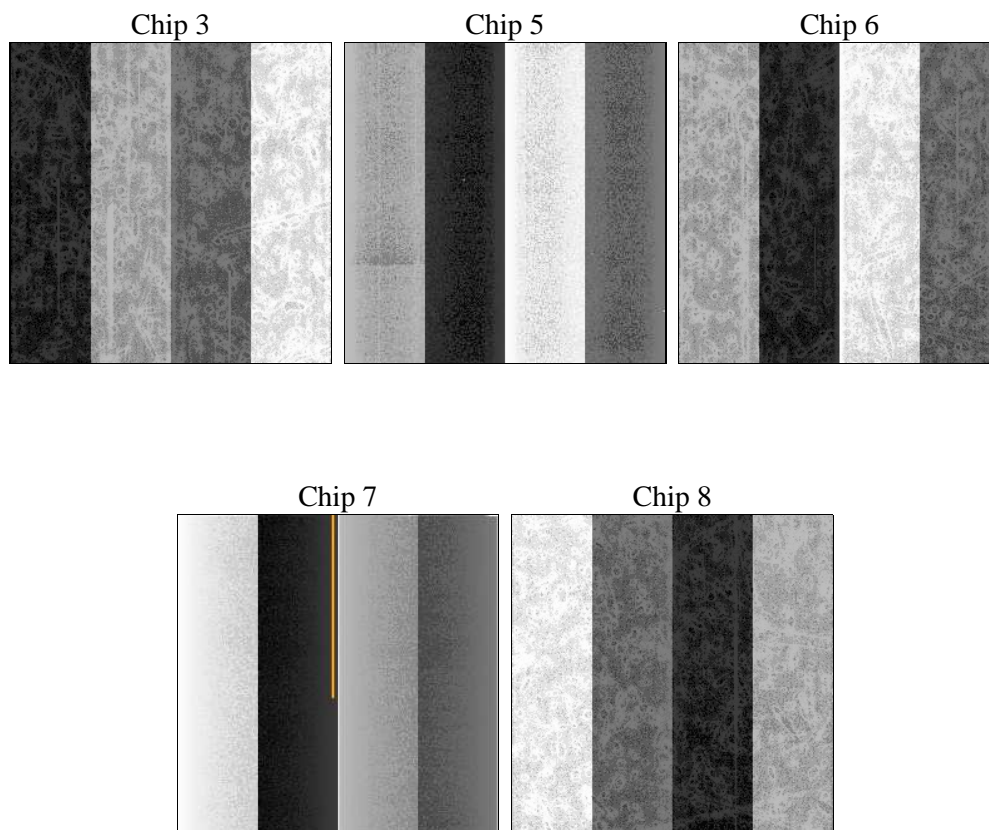
## 2 OBI

### 2.1 OBI

#### 2.1.1 Images



#### 2.1.2 Bias



### 2.1.3 Parameters

obi_num	0	Obi number	sched_exp_time	20000.000000	[s] Scheduled observation exposure time
ascdsver	8.5	Processing system revision	ontime	20035.299961448	Sum of GTIs [s]
caldsver	4.5.4	&#160	ontime3	20032.158981204	Sum of GTIs [s]
date	2012-12-12T14:06:46	Date and time of file creation	ontime5	20035.299961448	Sum of GTIs [s]
revision	3	Processing version of data	ontime6	20035.299961448	Sum of GTIs [s]
			ontime7	20035.299961448	Sum of GTIs [s]
			ontime8	20032.159050822	Sum of GTIs [s]
			l1events	938082	Number of level 1 events

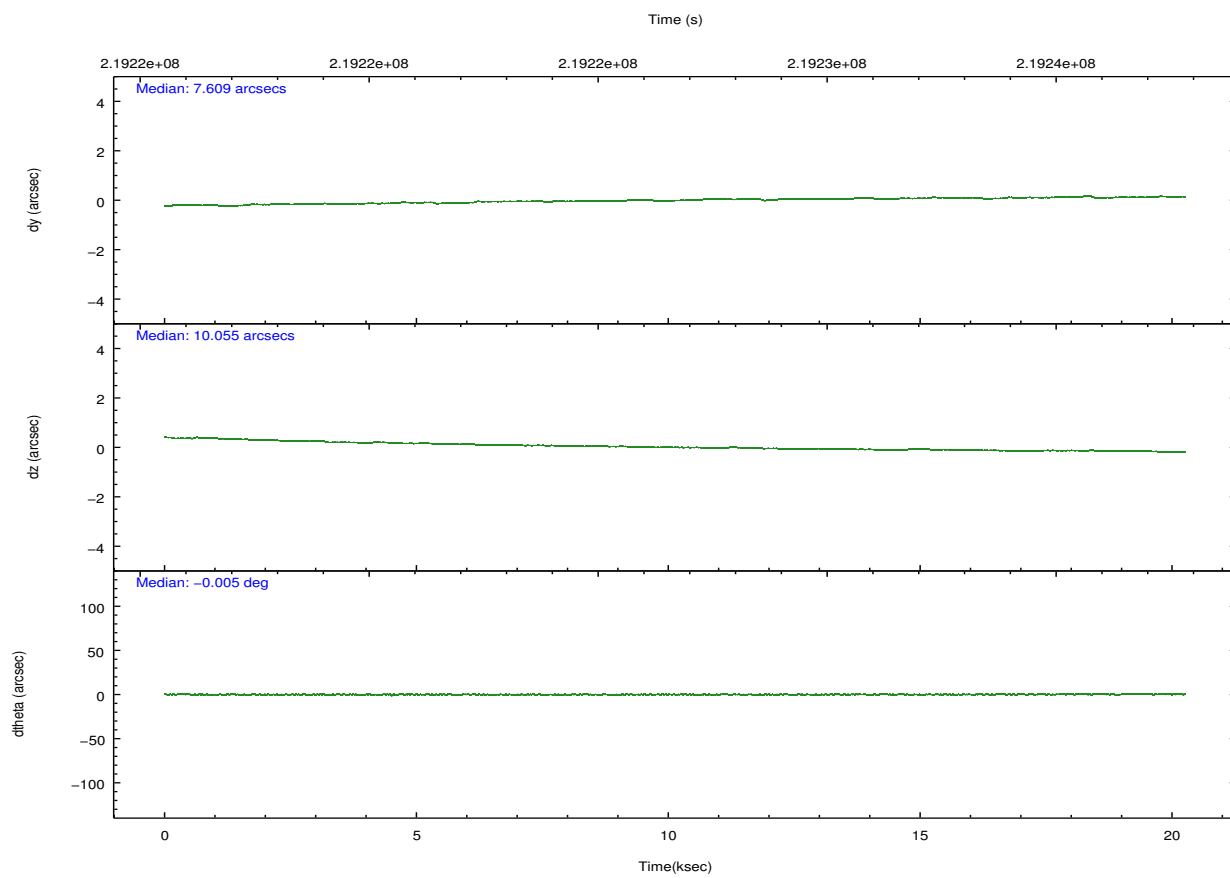
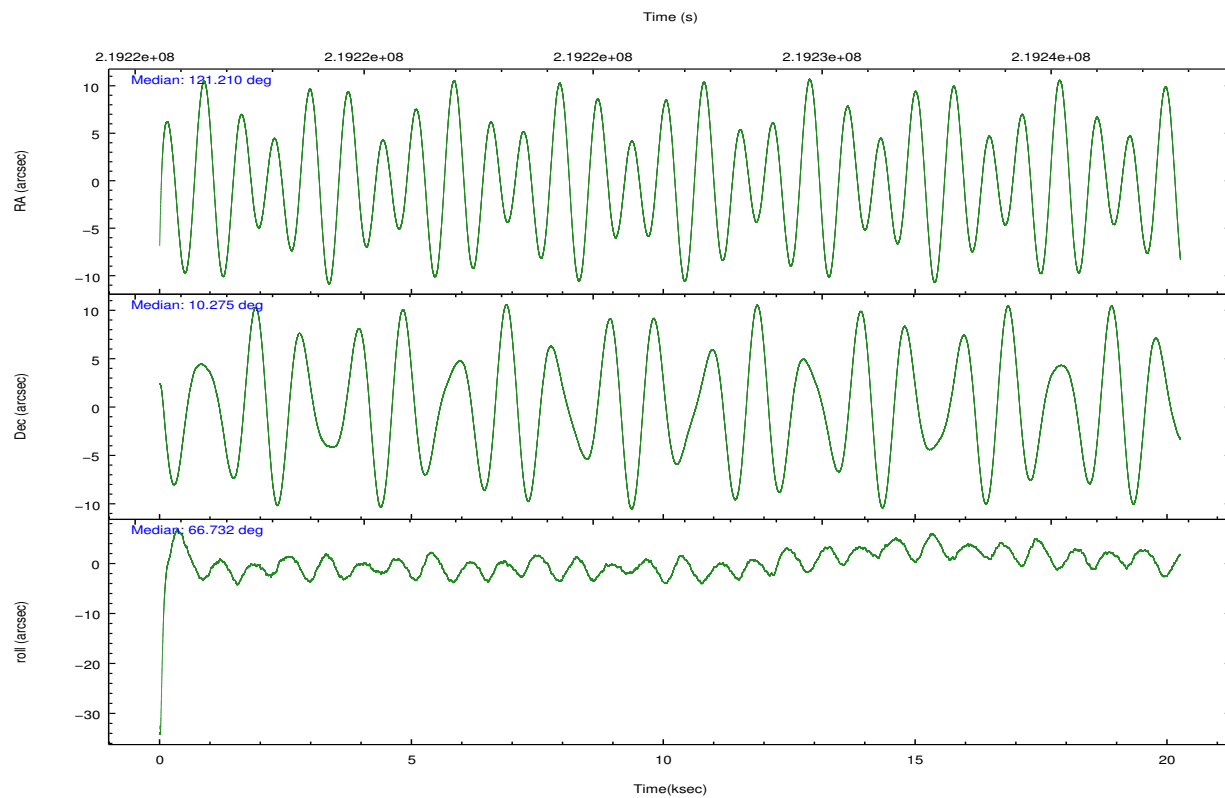
### 2.1.4 Events

	ccd 3	ccd 5	ccd 6	ccd 7	ccd 8		ccd 3	ccd 5	ccd 6	ccd 7	ccd 8
level 1 events	145933	233732	153482	208741	196194	grade 0 events	7773	12747	7453	8333	14450
rejected events	128310	125376	134863	120571	153858		5%	5%	4%	3%	7%
rejected %	87%	53%	87%	57%	78%	grade 1 events	79	290	82	220	135
							0%	0%	0%	0%	0%
						grade 2 events	3421	31972	3941	17589	9018
							2%	13%	2%	8%	4%
						grade 3 events	1719	4663	1759	7865	4430
							1%	1%	1%	3%	2%
						grade 4 events	1738	3970	1787	7658	4199
							1%	1%	1%	3%	2%
						grade 5 events	6556	17859	7070	19745	8956
							4%	7%	4%	9%	4%
						grade 6 events	2975	55021	3682	46737	10259
							2%	23%	2%	22%	5%
						grade 7 events	121672	107210	127708	100594	144747
							83%	45%	83%	48%	73%

## 2.2 Compared Parameters

Parameter	Planned	Actual	Parameter	Planned	Actual
Instrument	ACIS	ACIS	Obspar format version number	7	7
Detector	ACIS-35678	ACIS-35678	Obspar file type	PREDICTED	ACTUAL
Grating	NONE	NONE	Obspar update status	NONE	UPDATED
Data mode	VFAINT	VFAINT	Number of optional ACIS chips dropped	0	0
Observation mode	POINTING	POINTING	On-chip summing requested	N	N
[deg] Pointing RA	121.213118	121.2095068619107	Subarray requested	NONE	NONE
[deg] Pointing Dec	10.247714	10.2747171031996	Alternating exposures requested	N	N
[deg] Pointing Roll	66.580492	66.73774044805664	[s] Primary exposure time	0.000000	3.1
[mm] SIM focus pos	-0.684267	-0.6828225247311905			
[mm] SIM defocus	0	0.001444936568705701			
[mm] SIM translation stage pos	-190.132523	-190.1425803651734			
[mm] SIM translation stage offset	0	0.01005778216563158			
[s] Observation start time (MET)	219216812.184000	219215836.48503			
Observation start date	2004-12-12T05:32:28	2004-12-12T05:17:16			
[s] Observation end time (MET)	219236812.184000	219237163.14849			
Observation end date	2004-12-12T11:05:48	2004-12-12T11:12:43			
Read mode	TIMED	TIMED			

## 2.3 Aspect

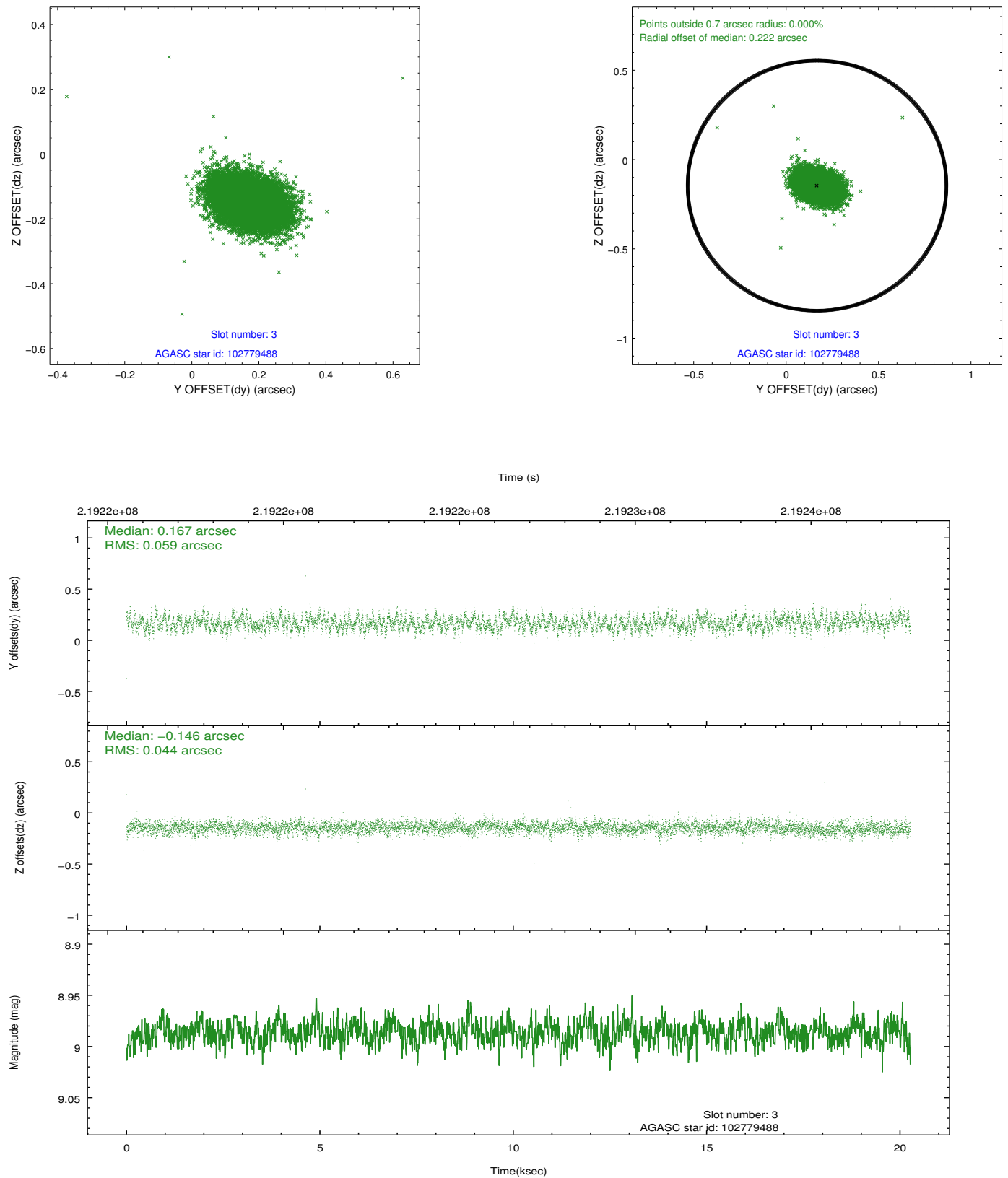


### Slot Statistics

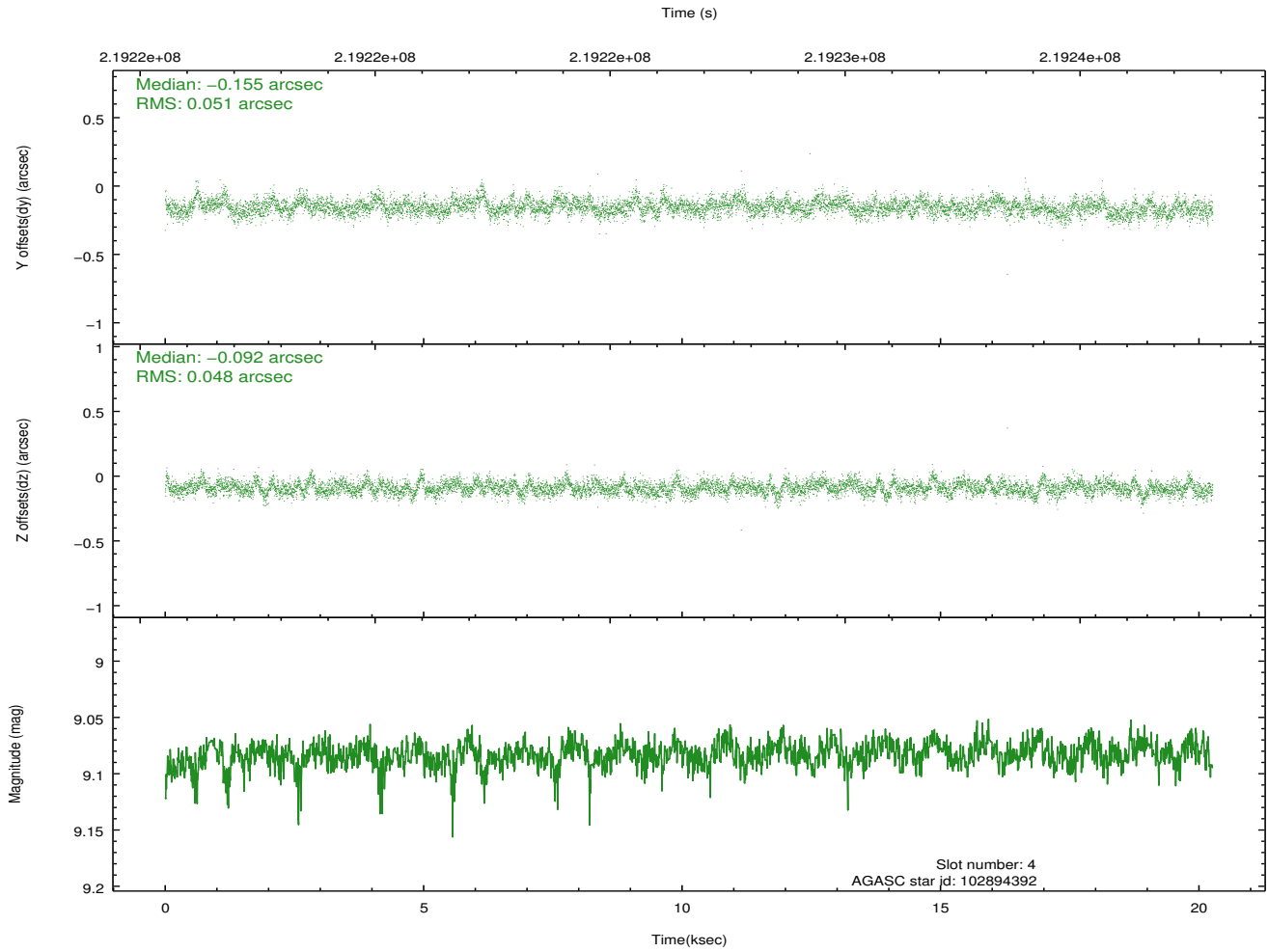
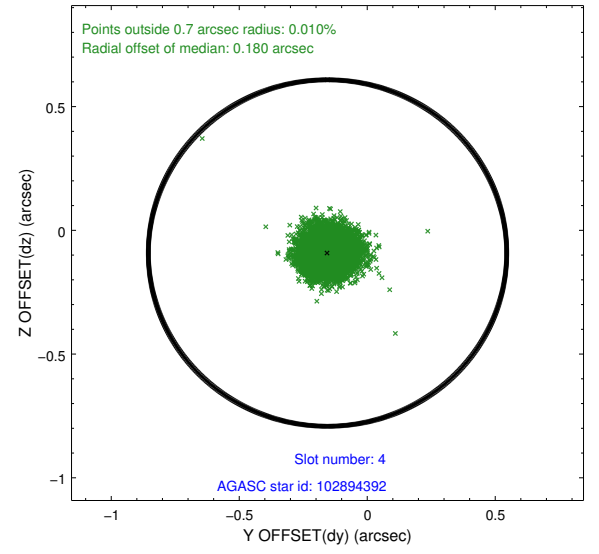
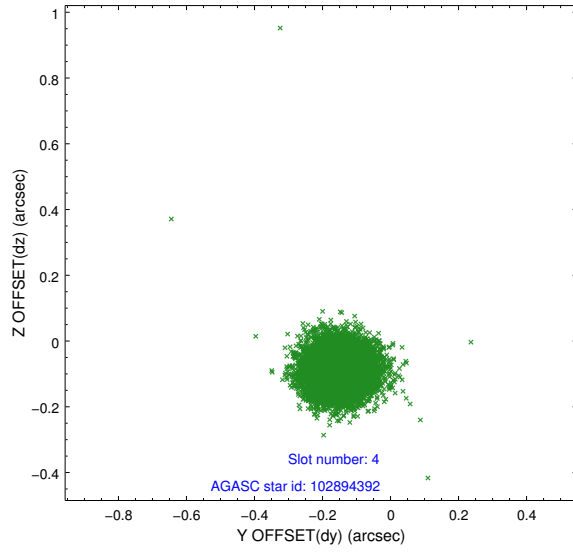
slot	status	id	mag	n_pts	med_dy	med_dz	dr1	dr2	ra	dec	mean_y	mean_z
0	FID	ACIS-S-2	7.11	4943	-0.050	-0.029	0.009	0.016	0.000000	0.000000	-760.36	-1731.34
1	FID	ACIS-S-4	7.21	4943	0.106	0.032	0.009	0.021	0.000000	0.000000	2152.93	177.09
2	FID	ACIS-S-5	7.24	4944	-0.087	0.006	0.010	0.017	0.000000	0.000000	-1813.06	170.84
3	GUIDE	102779488	8.99	9884	0.167	-0.146	0.078	0.126	120.488040	10.011003	-1800.90	2021.19
4	GUIDE	102894392	9.08	9882	-0.155	-0.092	0.073	0.118	121.311792	10.844838	2111.04	534.86
5	GUIDE	102900008	8.44	9884	0.031	0.194	0.075	0.122	121.701170	9.767302	-897.08	-2275.38
6	GUIDE	102906648	7.79	9886	0.088	-0.040	0.082	0.125	121.088001	10.249590	-169.75	409.38
7	GUIDE	102893184	8.41	9882	-0.131	0.084	0.060	0.096	121.068238	10.856757	1808.38	1342.10

## 2.4 Star Slots

### 2.4.1 Slot 3

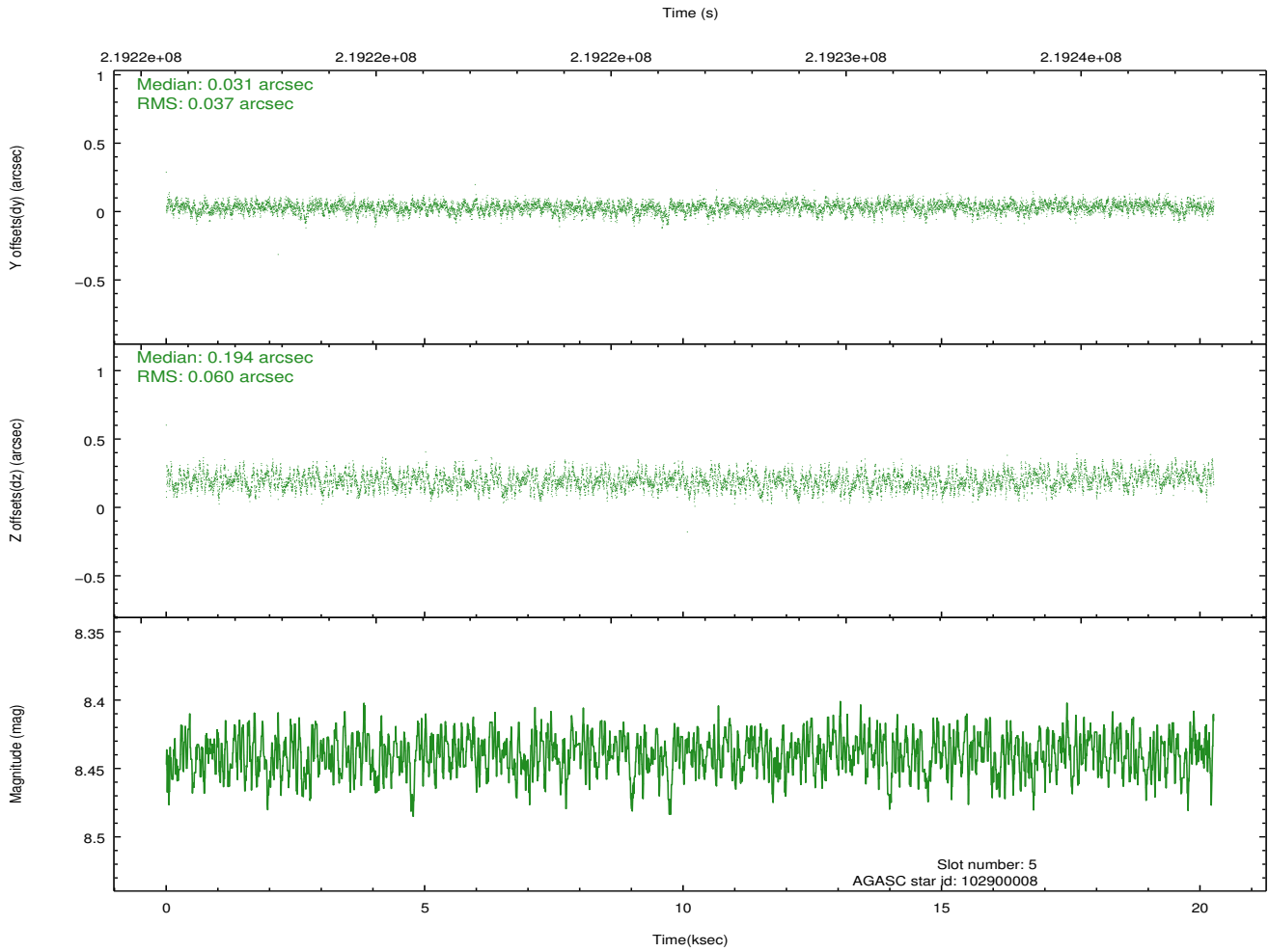
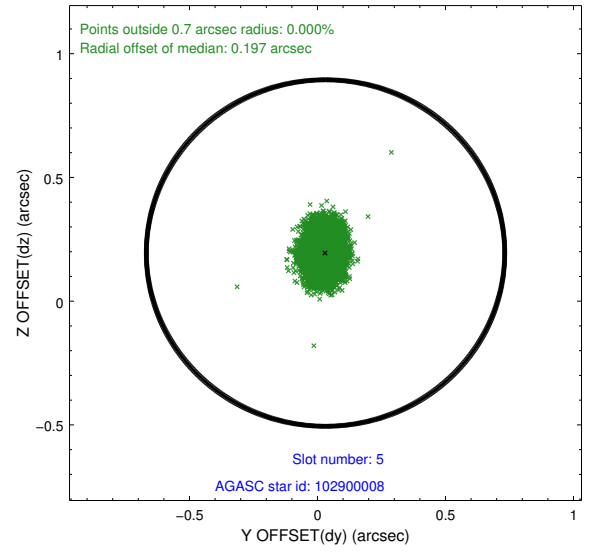
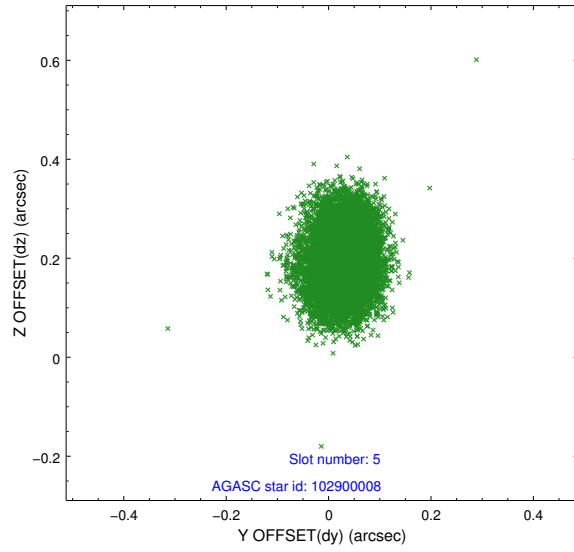


## 2.4.2 Slot 4

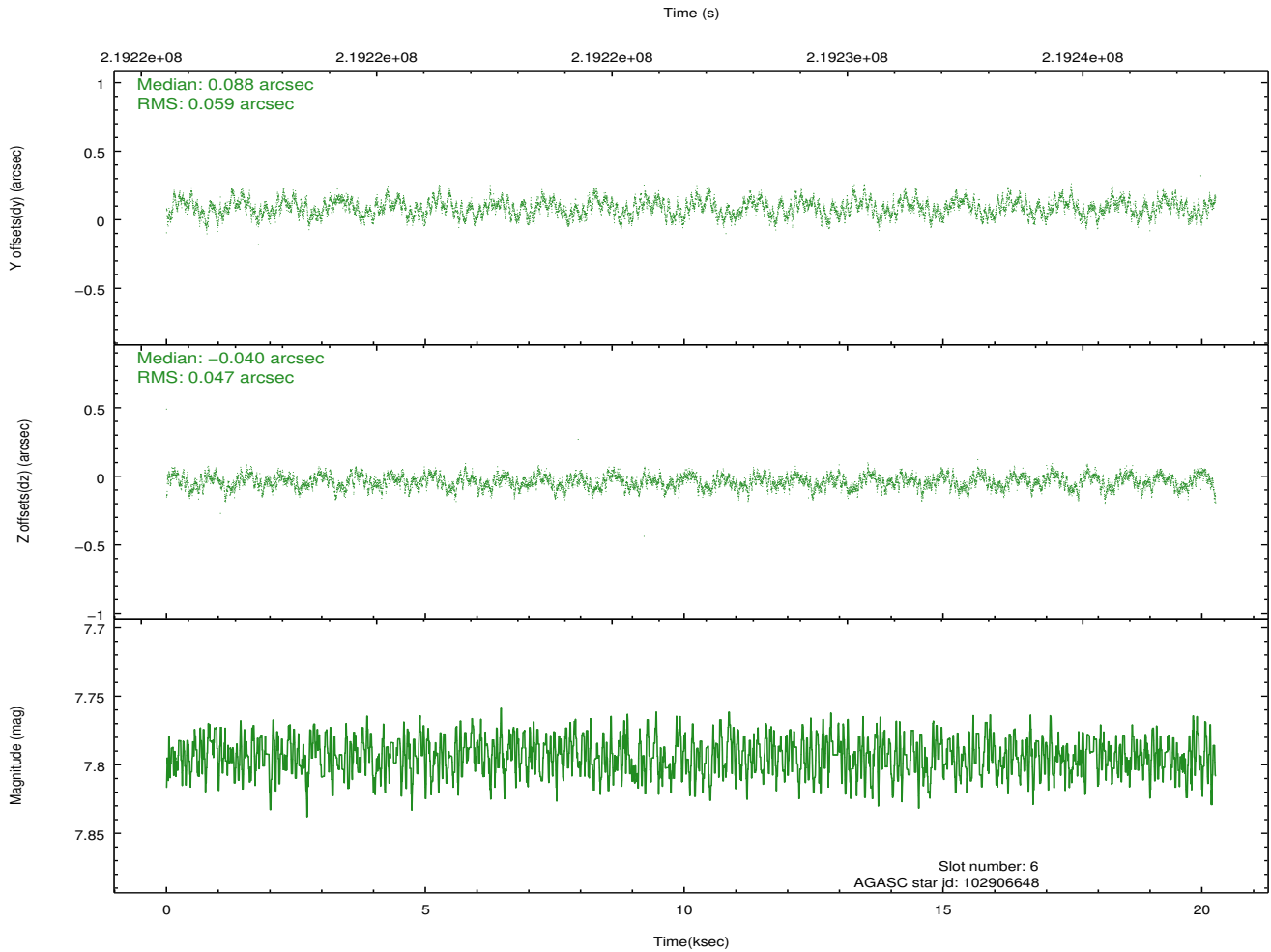
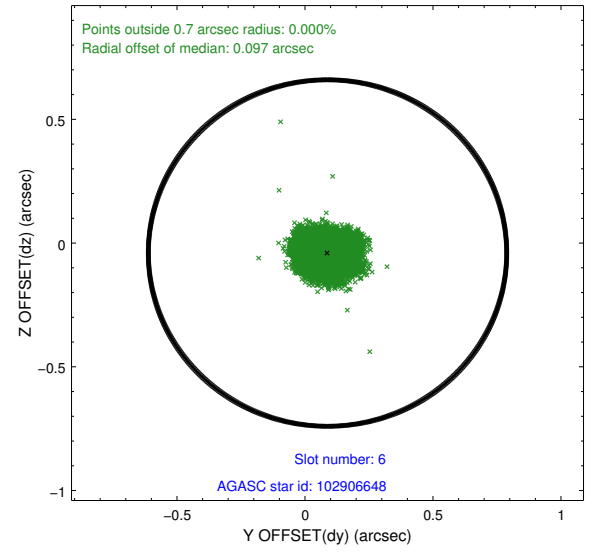
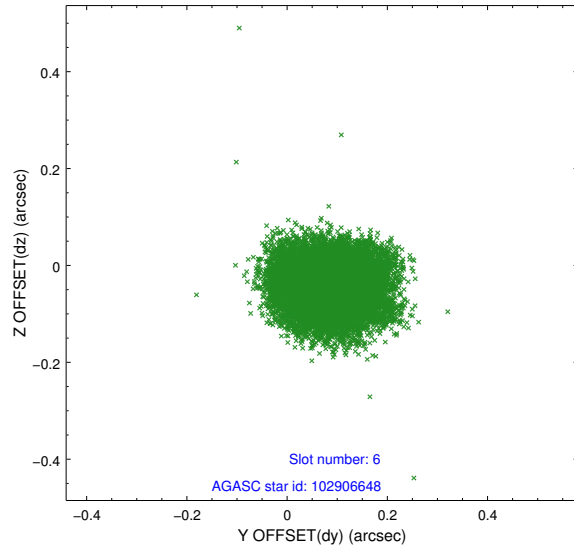




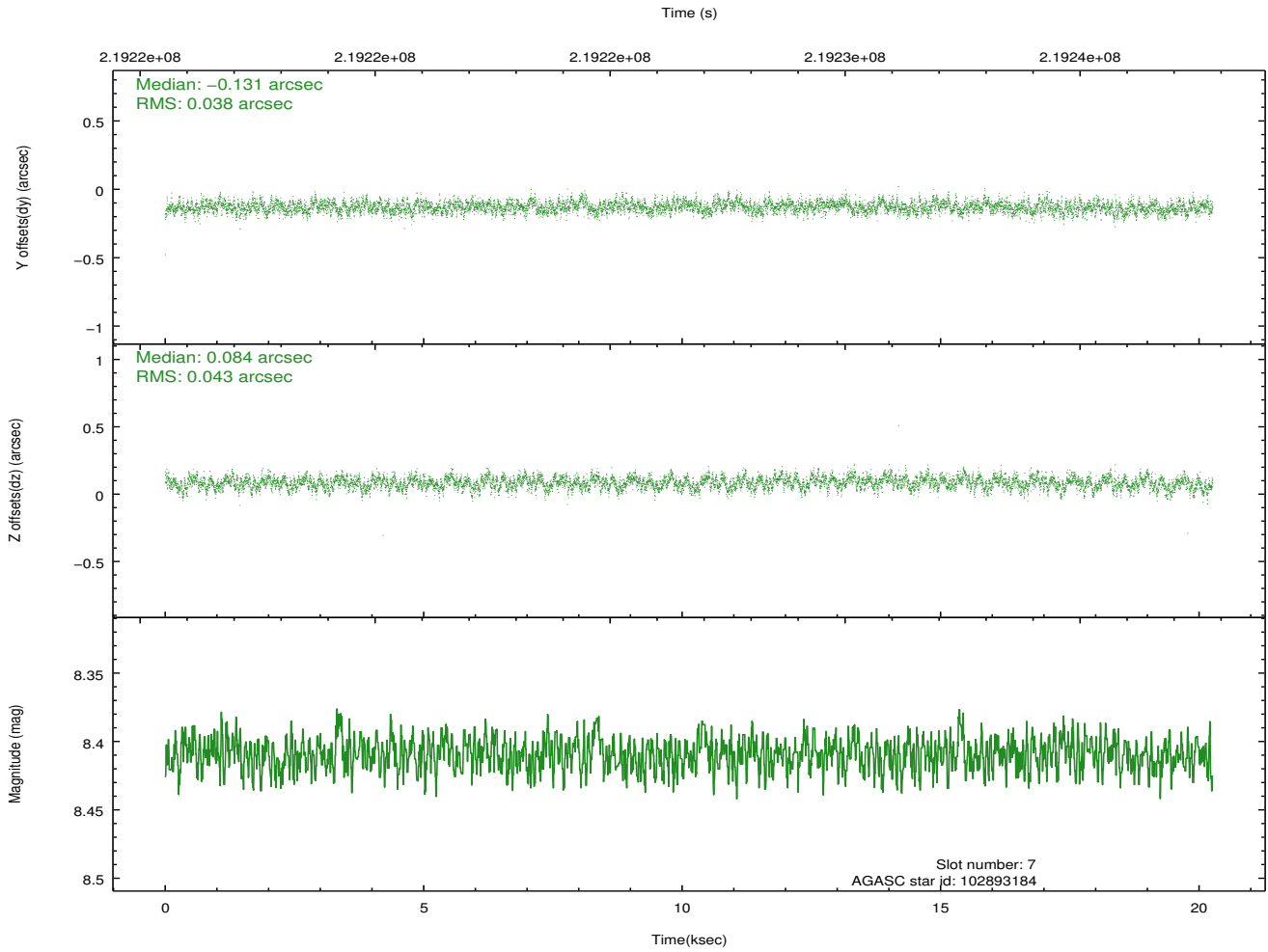
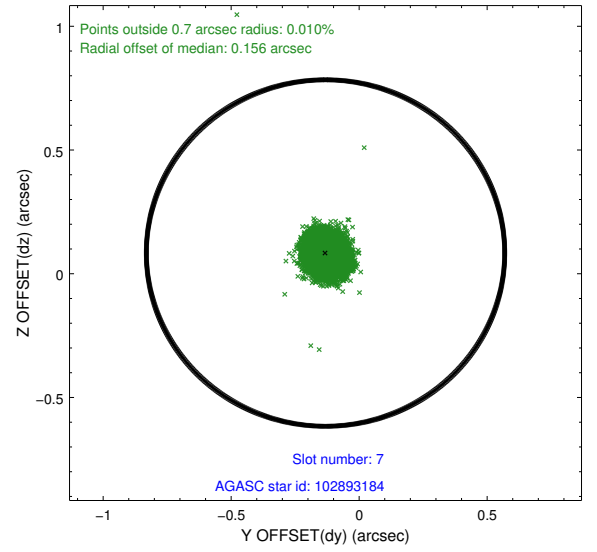
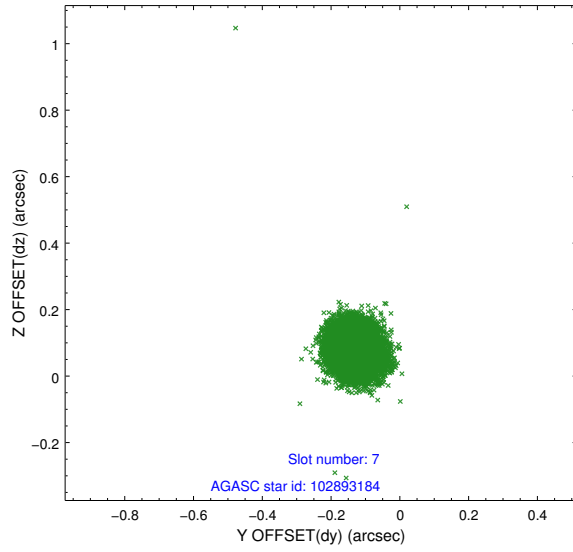
### 2.4.3 Slot 5



## 2.4.4 Slot 6

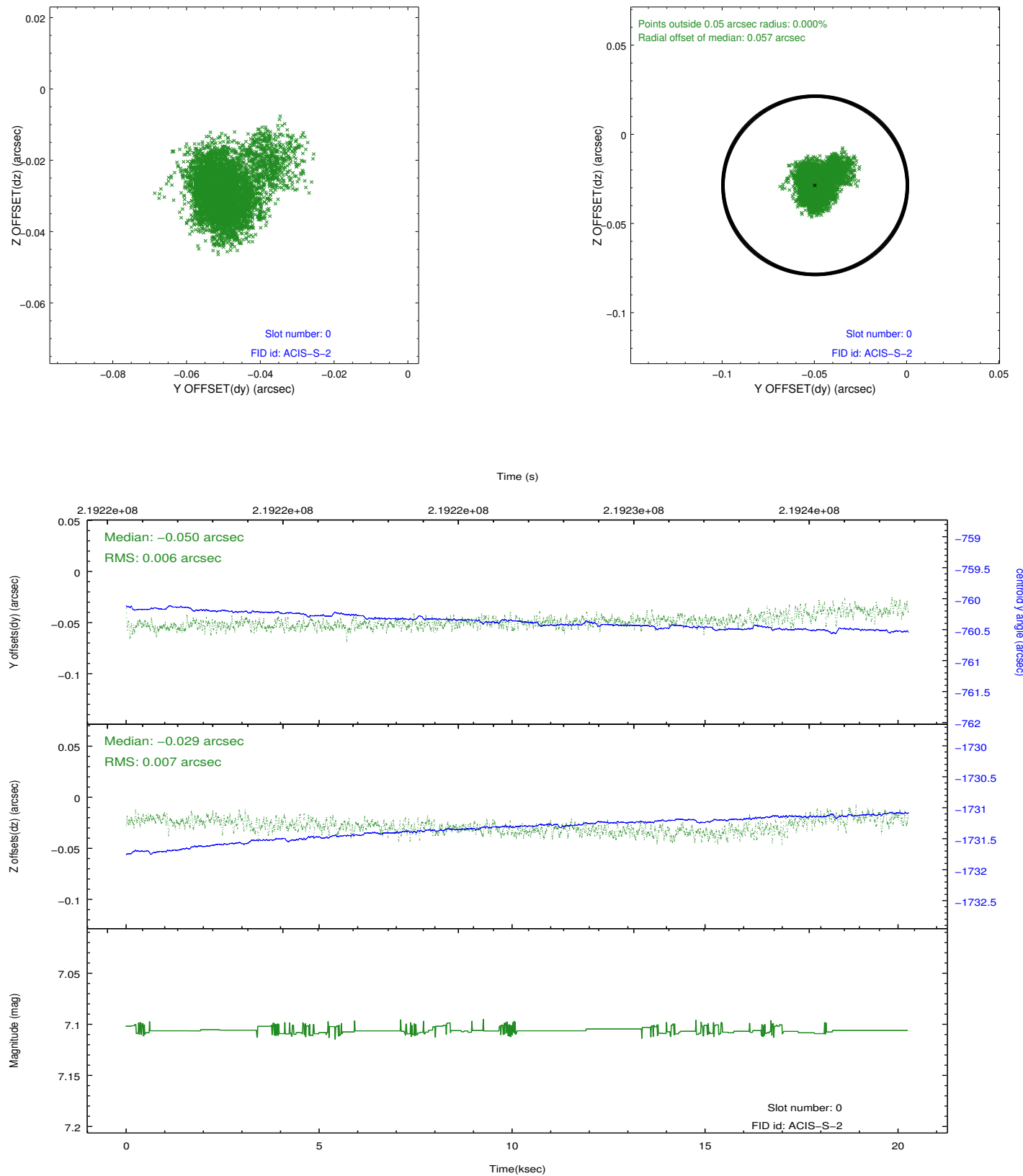


## 2.4.5 Slot 7

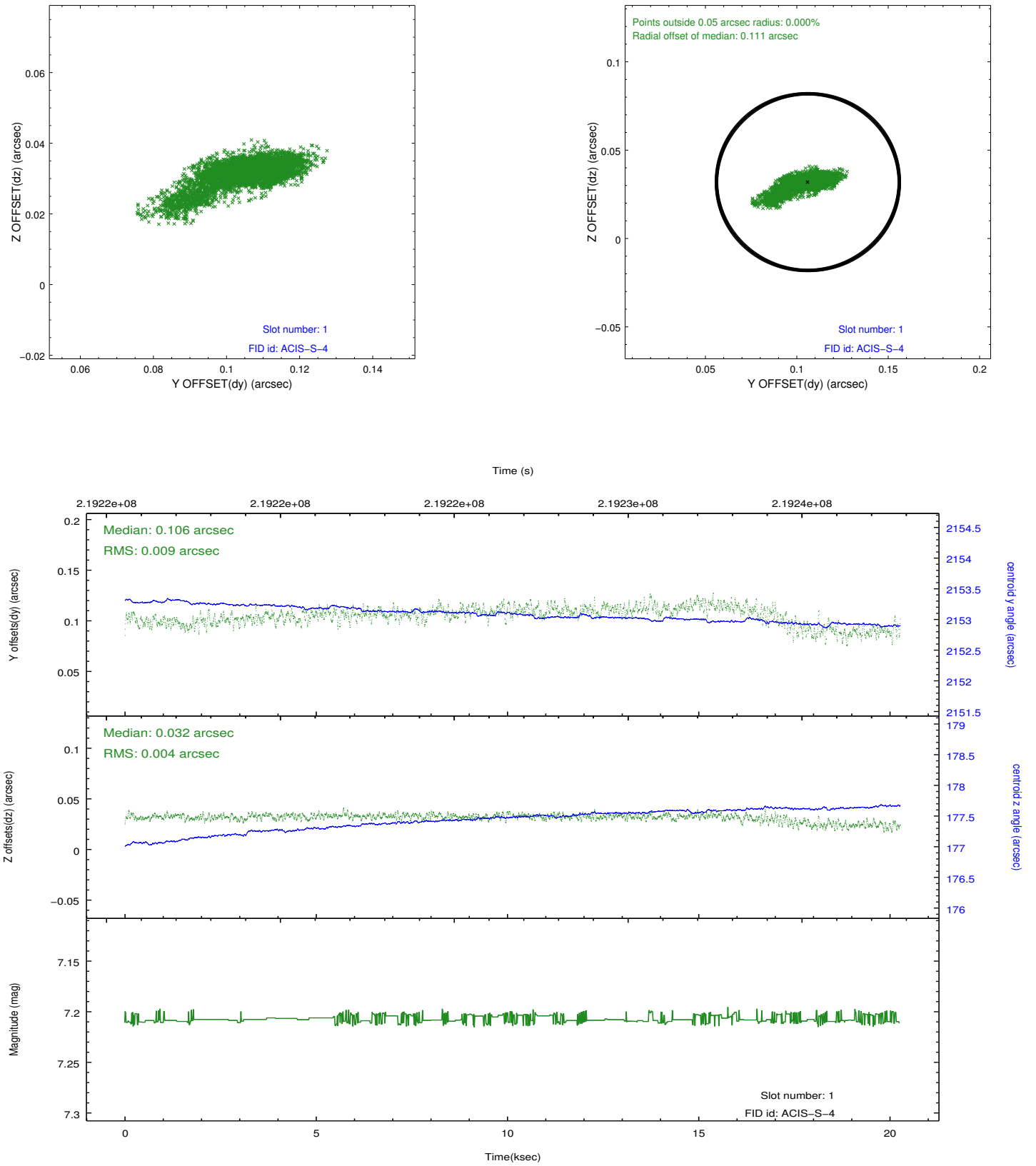


## 2.5 FID Slots

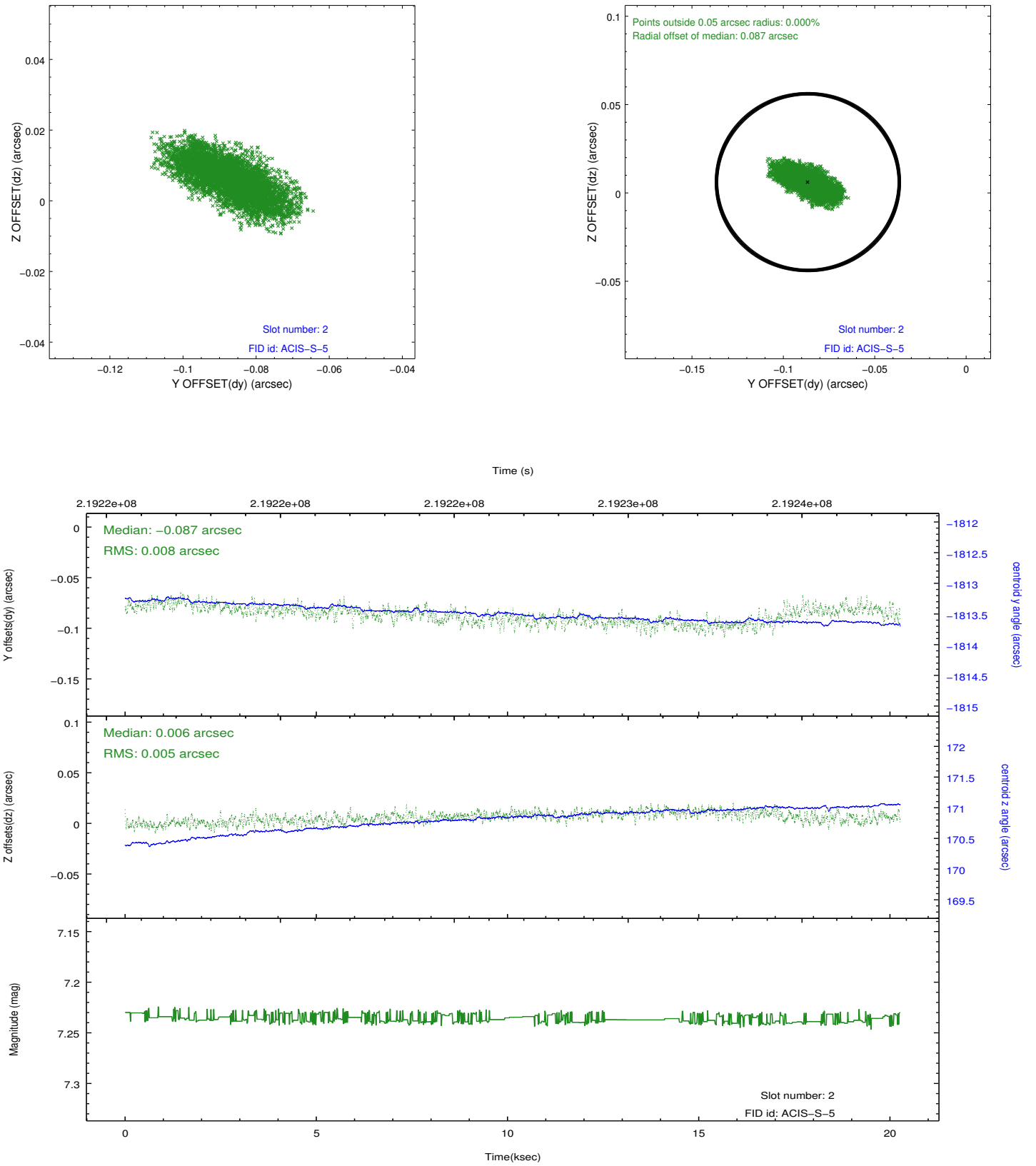
### 2.5.1 Slot 0



## 2.5.2 Slot 1



### 2.5.3 Slot 2



## A Summary

### A.1 Status

V&V Scientist	Jen Lauer
V&V Date (YYYY-MM-DD)	2013.01.04
V&V Edition	1
V&V Disposition and Status	OK
V&V Charge Time	20.03529

### A.2 Comments