

V&V Reference Report

L2 ASCDS Version : 8.5.1.1

Observation 5615 - L2 Version 3
Chandra X-Ray Center

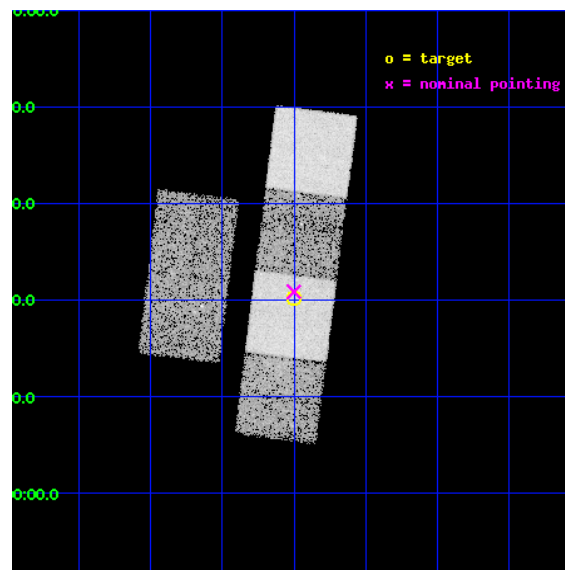
L2 Processing Date : Dec 21 2012

Contents

1	Front	2
2	OBI	3
2.1	OBI	3
2.1.1	Images	3
2.1.2	Bias	3
2.1.3	Parameters	4
2.1.4	Events	4
2.2	Compared Parameters	5
2.3	Aspect	6
2.4	Star Slots	9
2.4.1	Slot 3	9
2.4.2	Slot 4	10
2.4.3	Slot 5	11
2.4.4	Slot 6	12
2.4.5	Slot 7	13
2.5	FID Slots	14
2.5.1	Slot 0	14
2.5.2	Slot 1	15
2.5.3	Slot 2	16
A	Summary	17
A.1	Status	17
A.2	Comments	17

1 Front

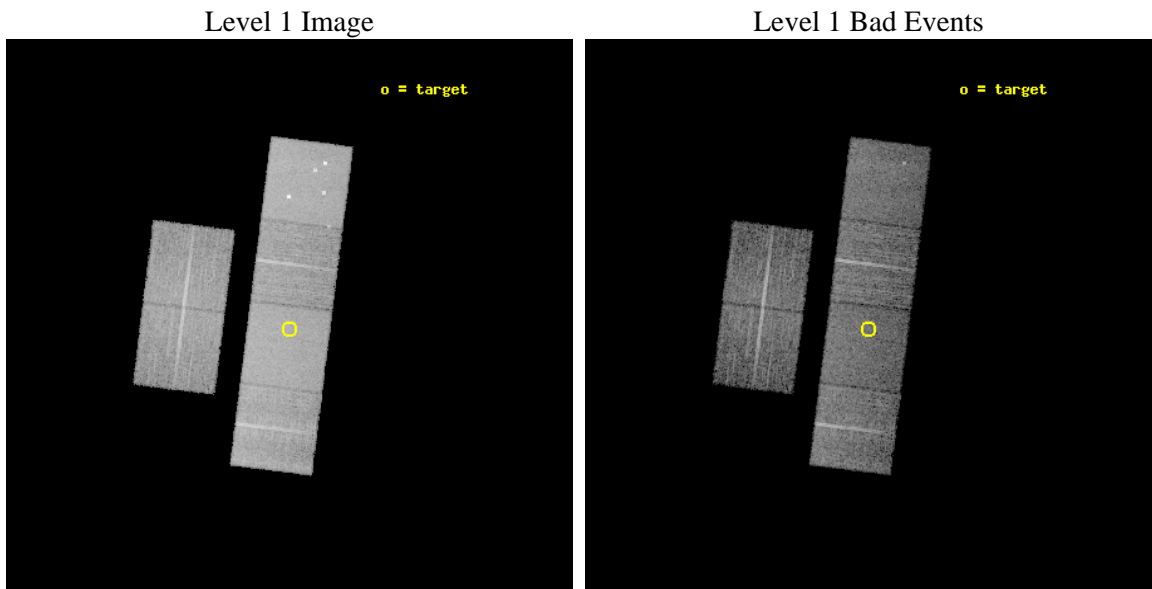
seq_num	701038	Sequence number
obs_id	5615	Observation id
title	A Chandra Survey of the Most Distant Quasars: X-raying the First Massive Black Holes	Proposal title
observer	Prof. William Brandt	Principal investigator
object	SDSS J1532-0039	Source name
dtcycle	0	
cycle	P	events from which exps? Prim/Second/Both
ra_targ	233.249583	Observer's specified target RA [deg]
dec_targ	-0.66225	Observer's specified target Dec [deg]
ra_nom	233.25008900773	Nominal RA [deg]
dec_nom	-0.6525823710183	Nominal Dec [deg]
roll_nom	97.206529122361	Nominal Roll [deg]
revision	3	Processing version of data
ontime	9954.8929784894	Sum of GTIs [s]
livetime	9828.8381294789	Livetime [s]
ontime2	9954.9340184927	Sum of GTIs [s]
ontime3	9954.7698584795	Sum of GTIs [s]
ontime5	9954.8519384861	Sum of GTIs [s]
ontime6	9954.8108984828	Sum of GTIs [s]
ontime7	9954.8929784894	Sum of GTIs [s]
ontime8	9954.728818506	Sum of GTIs [s]
l2events	123468	Number of level 2 events



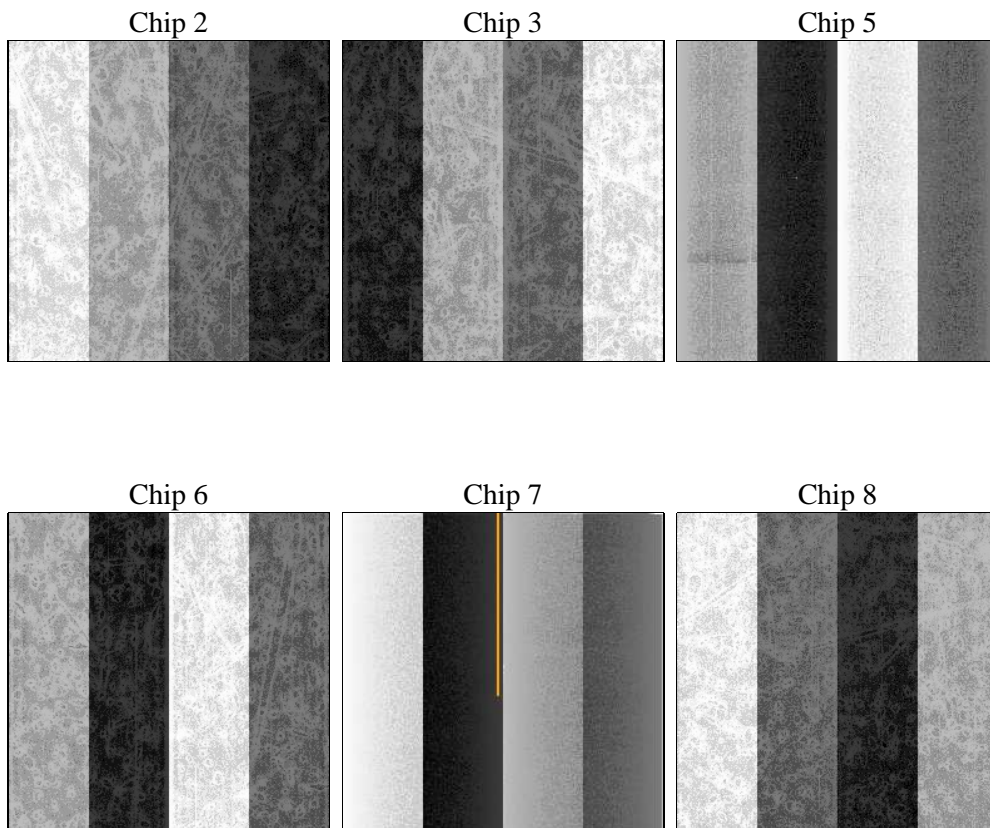
2 OBI

2.1 OBI

2.1.1 Images



2.1.2 Bias



2.1.3 Parameters

obi_num	0	Obi number	sched_exp_time	10000.000000	[s] Scheduled observation exposure time
ascdsver	8.5.1.1	Processing system revision	ontime	9954.8929784894	Sum of GTIs [s]
caldsver	4.5.5	 	ontime2	9954.9340184927	Sum of GTIs [s]
date	2012-12-21T16:03:44	Date and time of file creation	ontime3	9954.7698584795	Sum of GTIs [s]
revision	3	Processing version of data	ontime5	9954.8519384861	Sum of GTIs [s]
			ontime6	9954.8108984828	Sum of GTIs [s]
			ontime7	9954.8929784894	Sum of GTIs [s]
			ontime8	9954.728818506	Sum of GTIs [s]
			l1events	531227	Number of level 1 events

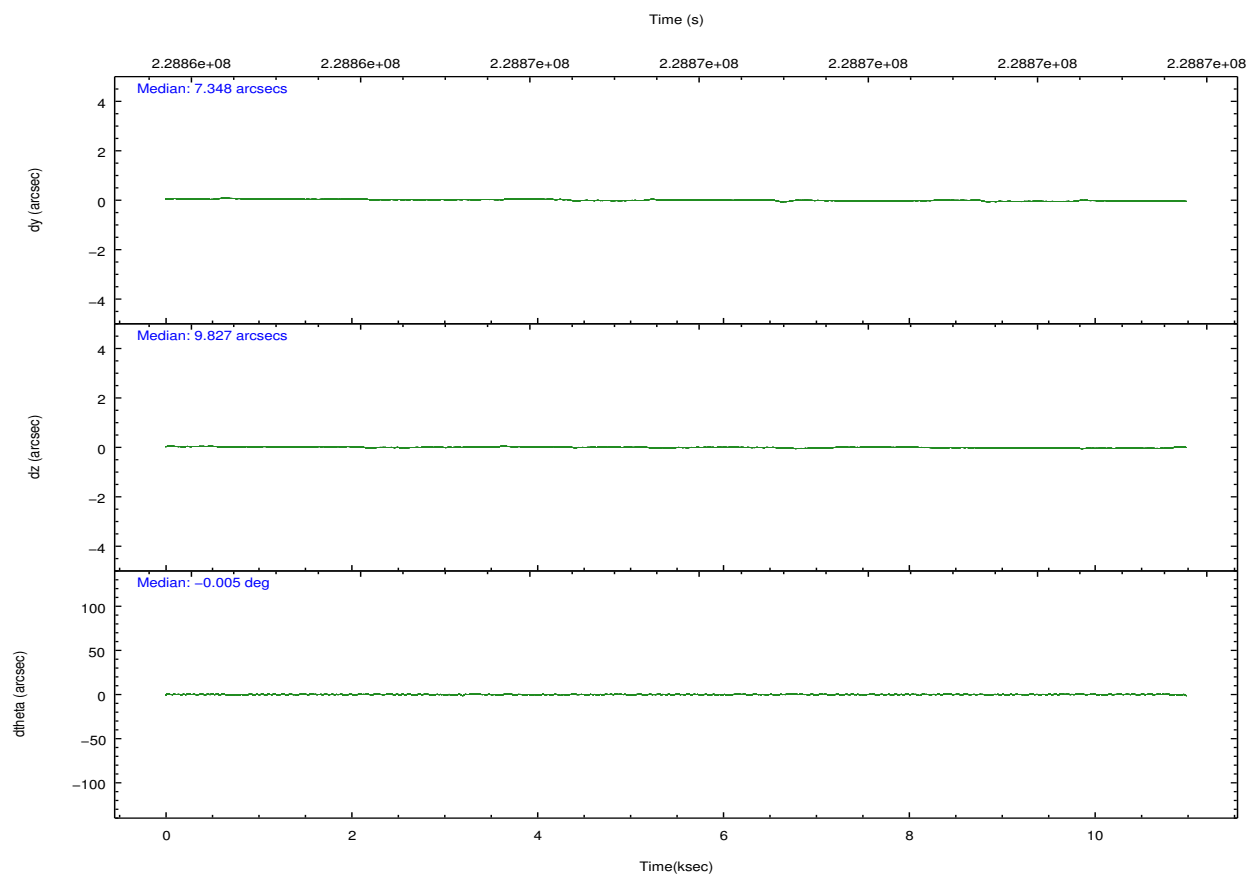
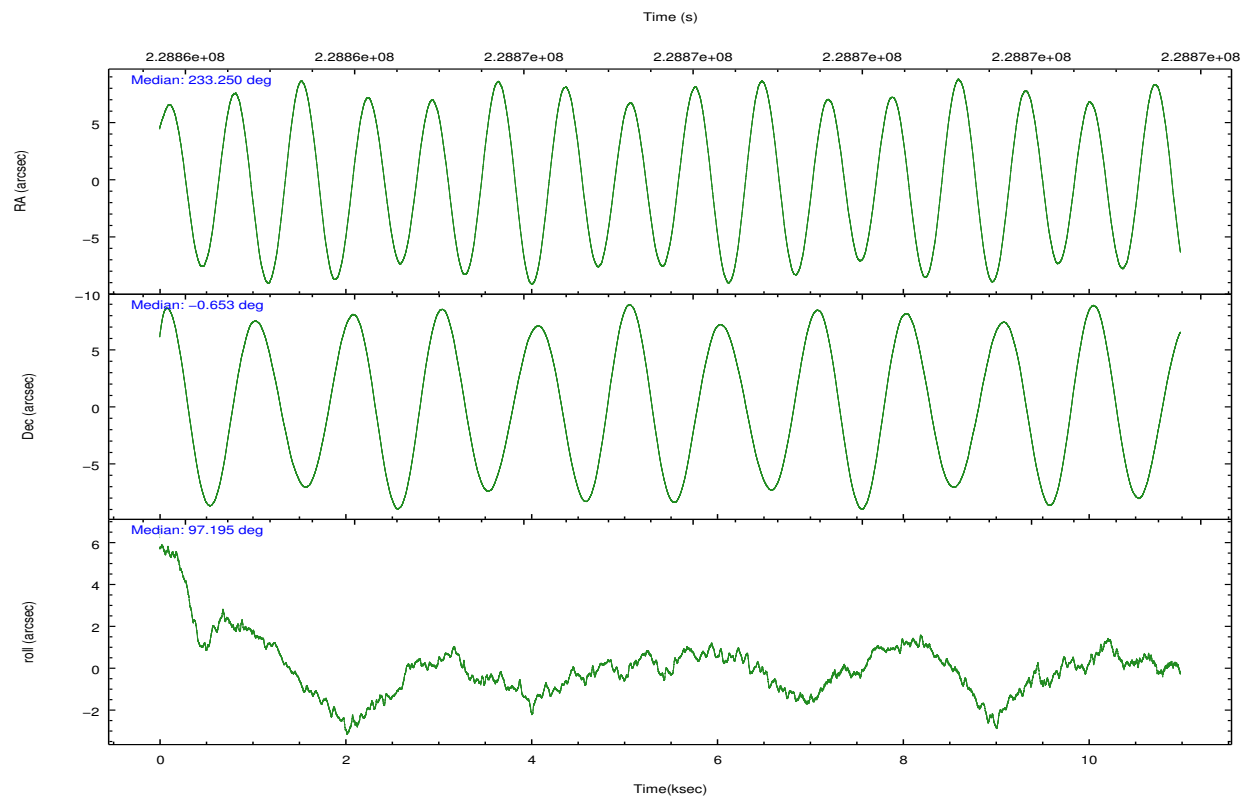
2.1.4 Events

	ccd 2	ccd 3	ccd 5	ccd 6	ccd 7	ccd 8		ccd 2	ccd 3	ccd 5	ccd 6	ccd 7	ccd 8
level 1 events	72287	68595	115998	75758	103177	95412	grade 0 events	3957	3927	8816	3691	4304	7547
rejected events	63350	59712	60792	66669	59612	74278		5%	5%	7%	4%	4%	7%
rejected %	87%	87%	52%	88%	57%	77%	grade 1 events	53	40	408	35	87	74
								0%	0%	0%	0%	0%	0%
							grade 2 events	1878	1702	15455	1855	8826	4448
								2%	2%	13%	2%	8%	4%
							grade 3 events	865	897	1914	864	3801	2123
								1%	1%	1%	1%	3%	2%
							grade 4 events	793	850	1873	811	3880	2033
								1%	1%	1%	1%	3%	2%
							grade 5 events	3053	3337	7985	3440	9687	4680
								4%	4%	6%	4%	9%	4%
							grade 6 events	1447	1514	27172	1872	22777	4994
								2%	2%	23%	2%	22%	5%
							grade 7 events	60241	56328	52375	63190	49815	69513
								83%	82%	45%	83%	48%	72%

2.2 Compared Parameters

Parameter	Planned	Actual	Parameter	Planned	Actual
Instrument	ACIS	ACIS	Obspar format version number	7	7
Detector	ACIS-235678	ACIS-235678	Obspar file type	PREDICTED	ACTUAL
Grating	NONE	NONE	Obspar update status	NONE	UPDATED
Data mode	FAINT	FAINT	Number of optional ACIS chips dropped	0	0
Observation mode	POINTING	POINTING	On-chip summing requested	N	N
[deg] Pointing RA	233.266828	233.2500890077276	Subarray requested	NONE	NONE
[deg] Pointing Dec	-0.674057	-0.652582371018301	Alternating exposures requested	N	N
[deg] Pointing Roll	97.050091	97.20652912236066	[s] Primary exposure time	0.000000	3.2
[mm] SIM focus pos	-0.684267	-0.6828225247311905			
[mm] SIM defocus	0	0.001444936568705701			
[mm] SIM translation stage pos	-190.132523	-190.1400660498719			
[mm] SIM translation stage offset	0	0.00754346686406393			
[s] Observation start time (MET)	228863223.184000	228861861.30859			
Observation start date	2005-04-02T21:05:59	2005-04-02T20:44:21			
[s] Observation end time (MET)	228873223.184000	228873582.69662			
Observation end date	2005-04-02T23:52:39	2005-04-02T23:59:42			
Read mode	TIMED	TIMED			

2.3 Aspect

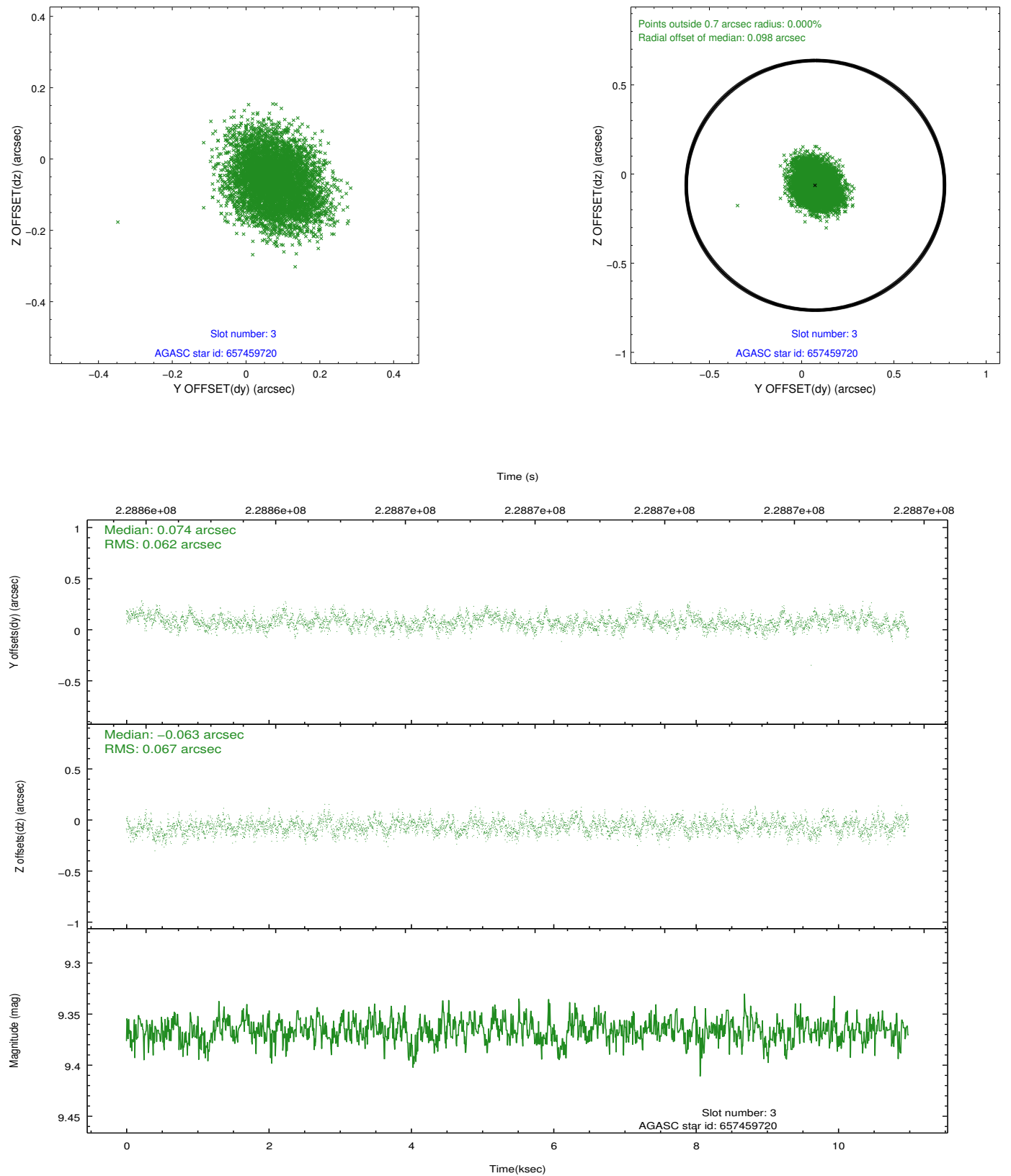


Slot Statistics

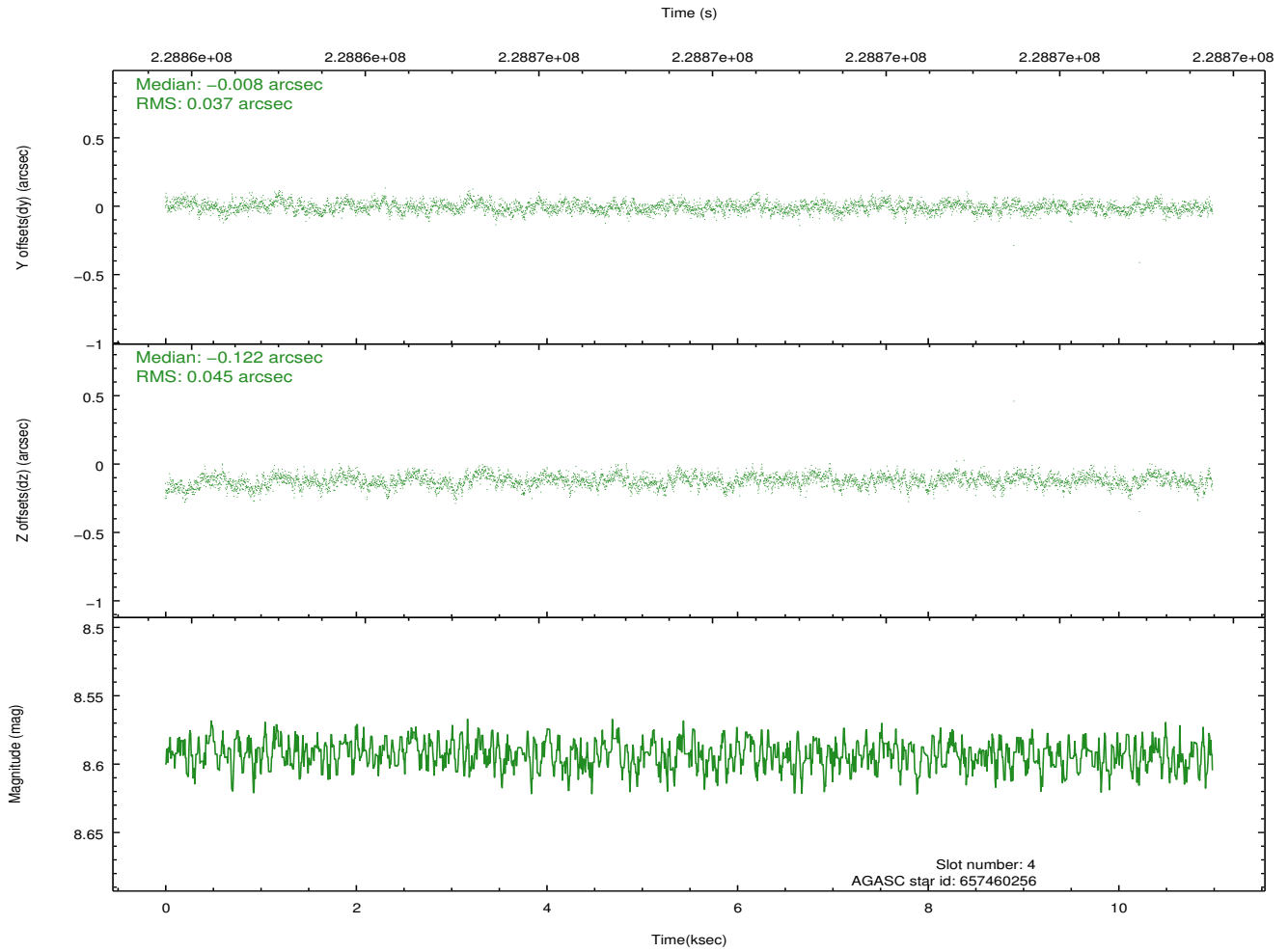
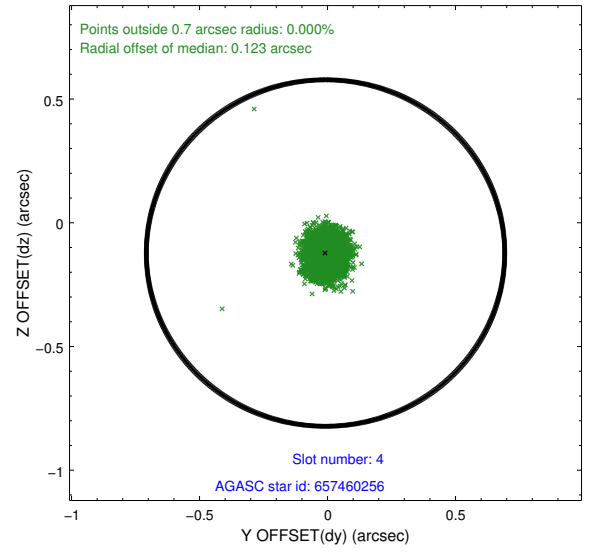
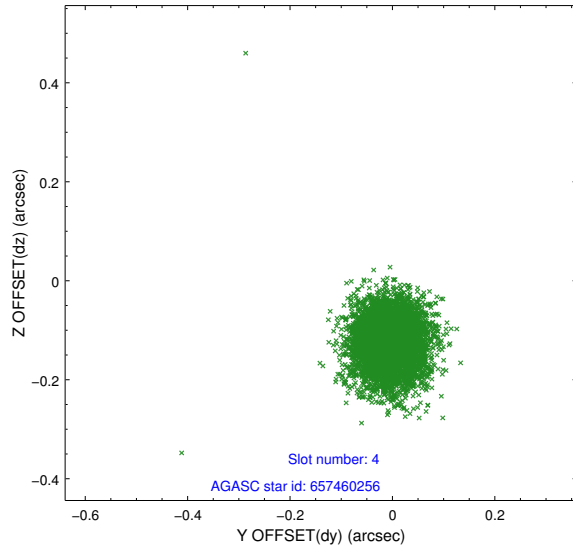
slot	status	id	mag	n_pts	med_dy	med_dz	dr1	dr2	ra	dec	mean_y	mean_z
0	FID	ACIS-S-2	7.10	2680	-0.048	-0.042	0.008	0.015	0.000000	0.000000	-760.12	-1731.12
1	FID	ACIS-S-4	7.21	2680	0.116	0.035	0.007	0.019	0.000000	0.000000	2153.06	177.01
2	FID	ACIS-S-5	7.23	2680	-0.098	0.016	0.007	0.015	0.000000	0.000000	-1812.45	171.11
3	GUIDE	657459720	9.37	5353	0.074	-0.063	0.098	0.157	232.649919	-0.849723	-355.36	2281.39
4	GUIDE	657460256	8.59	5357	-0.008	-0.122	0.061	0.101	232.775604	-0.780171	-162.41	1802.16
5	GUIDE	657461368	7.41	5361	-0.172	0.219	0.063	0.101	233.706562	-0.146540	1690.76	-1803.24
6	GUIDE	657461824	9.48	5358	0.032	0.110	0.119	0.202	233.607297	-0.096573	1913.60	-1471.54
7	GUIDE	657463000	9.17	5359	0.071	-0.140	0.080	0.130	233.155519	-0.333918	1265.01	247.33

2.4 Star Slots

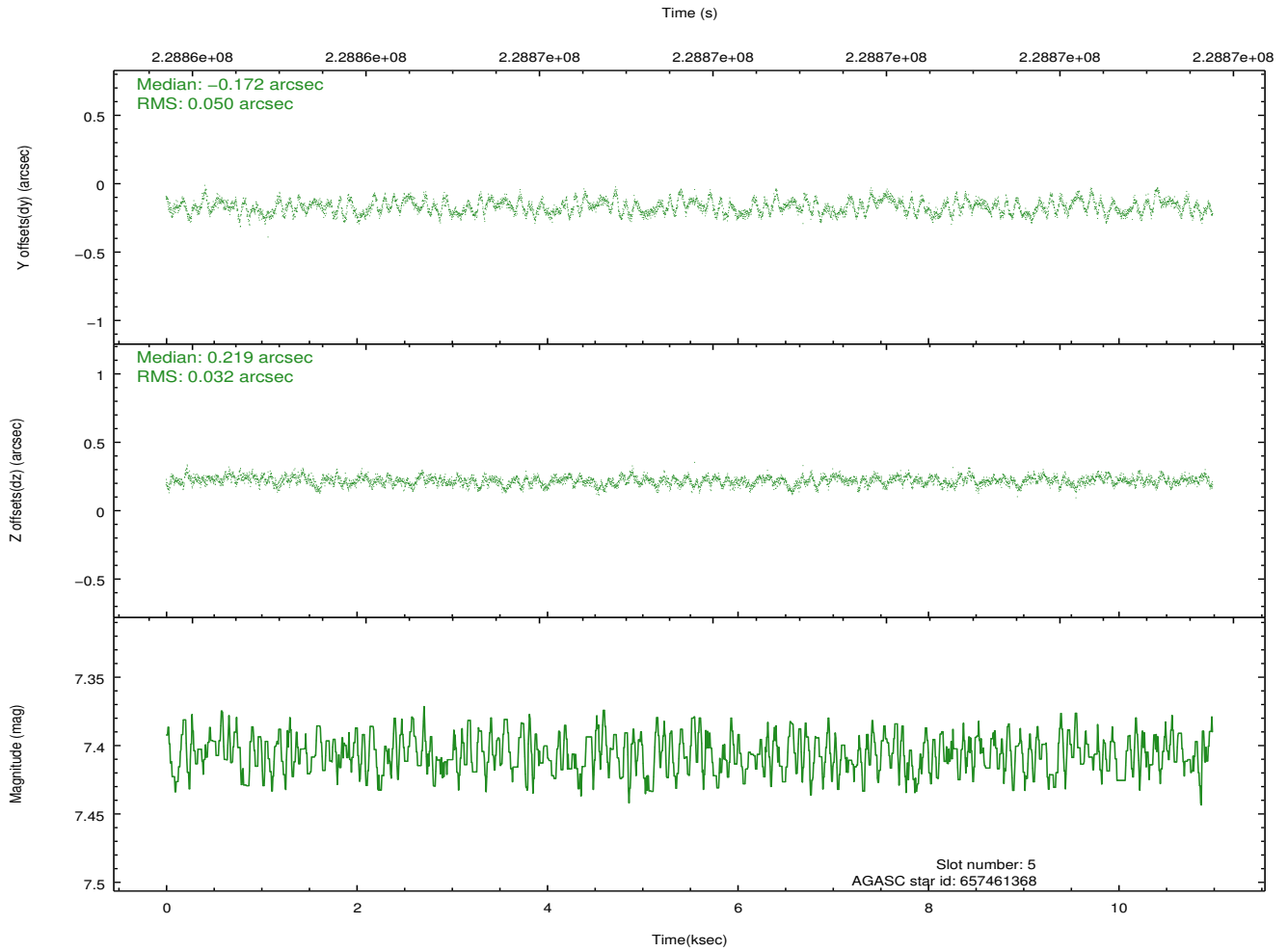
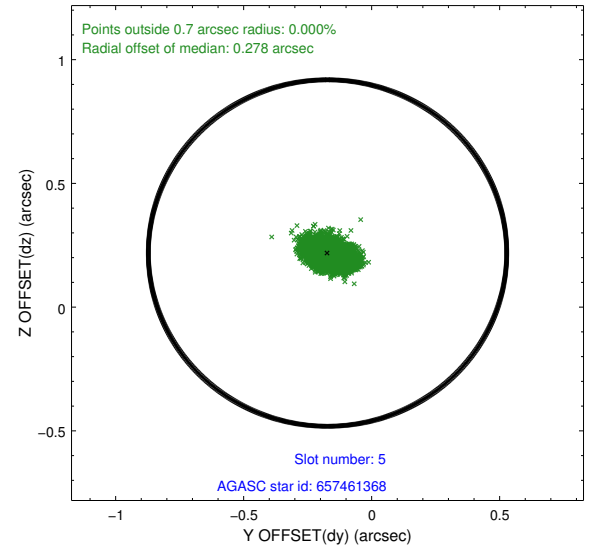
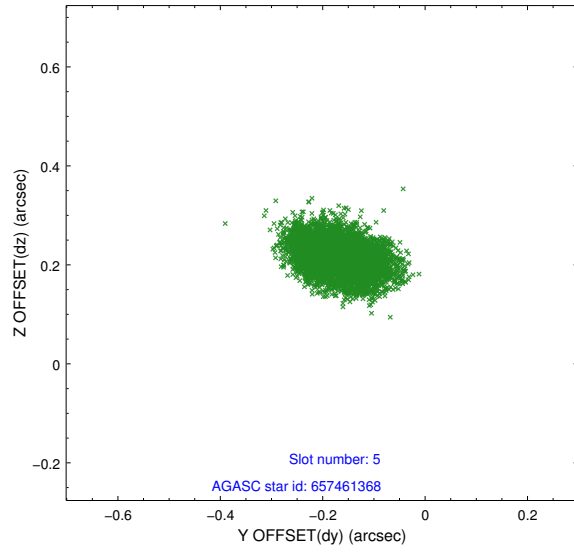
2.4.1 Slot 3



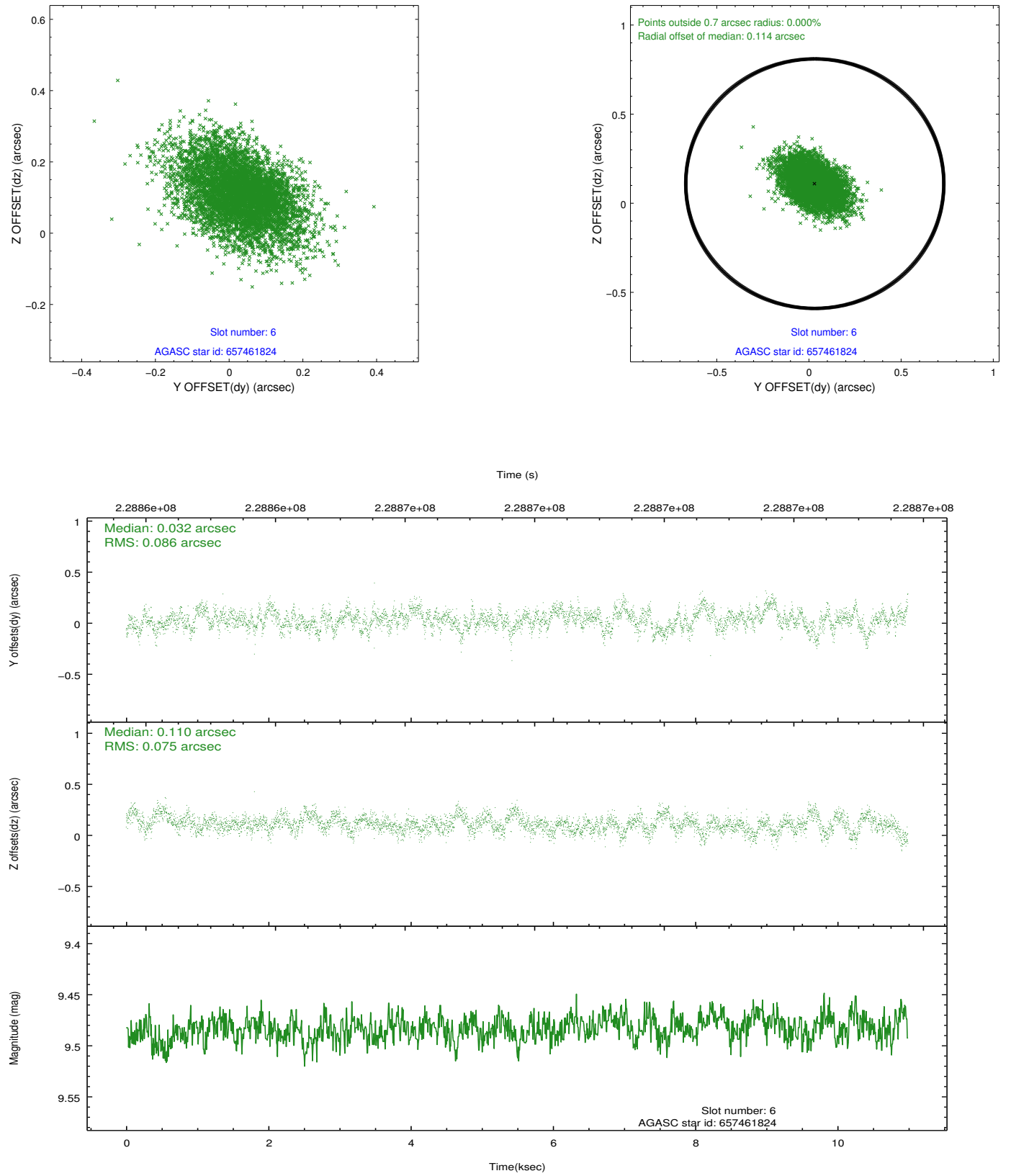
2.4.2 Slot 4



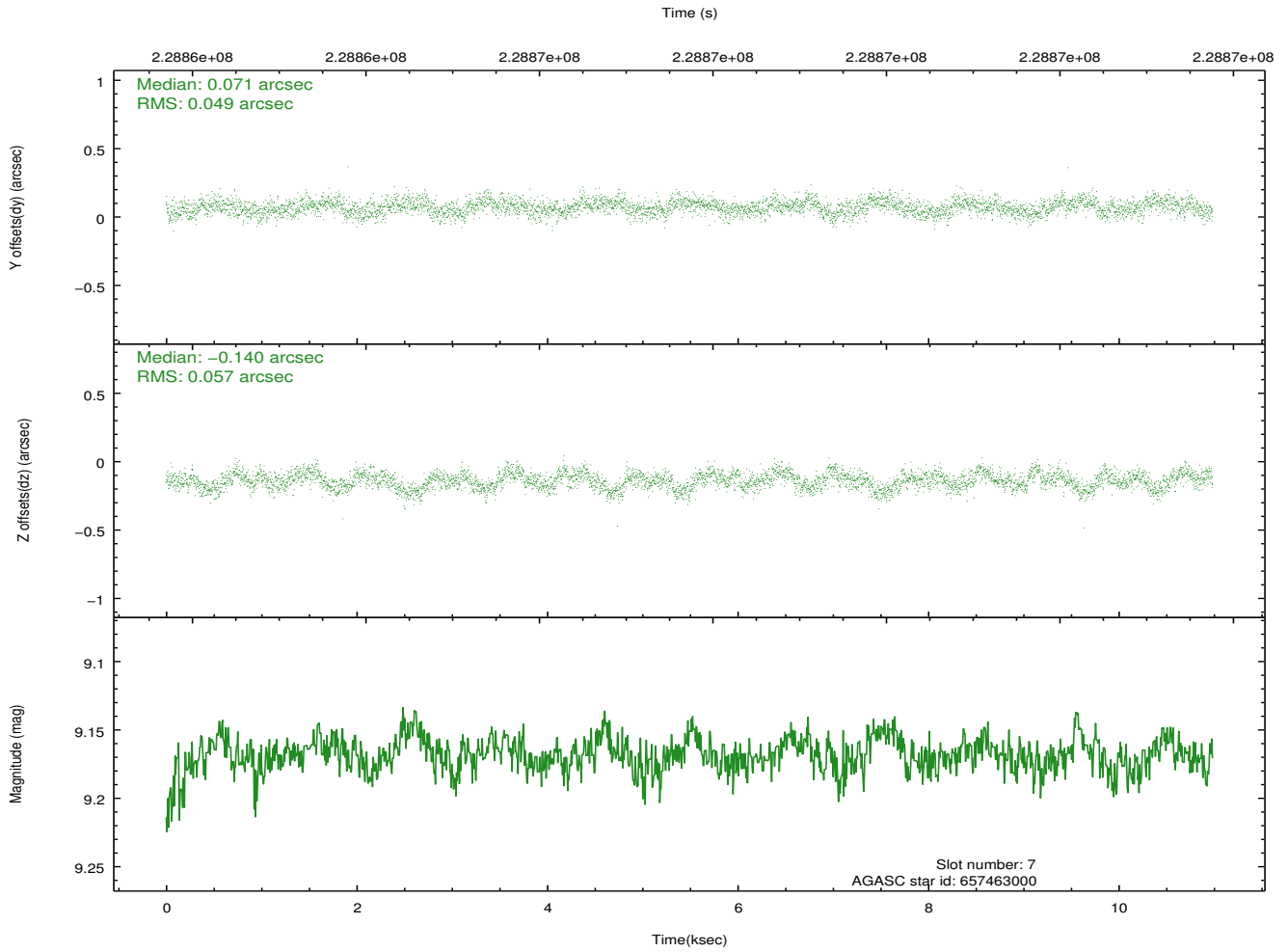
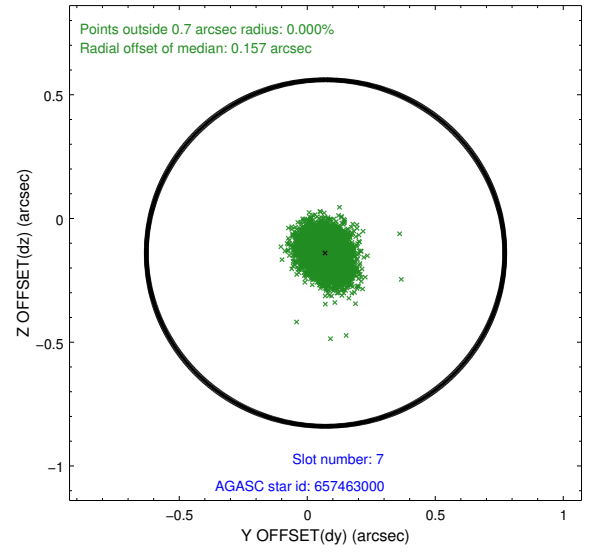
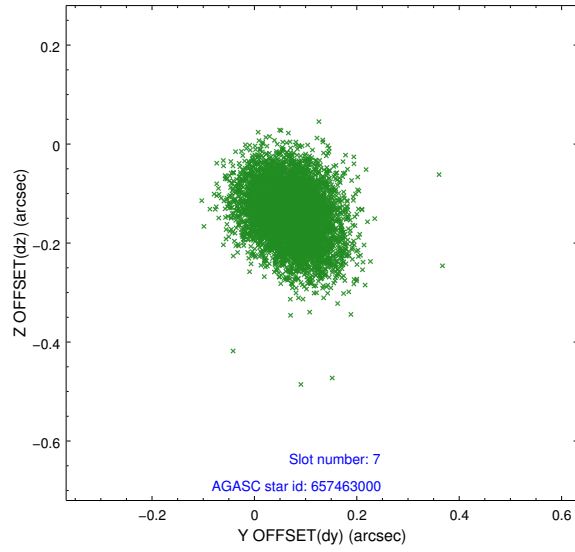
2.4.3 Slot 5



2.4.4 Slot 6

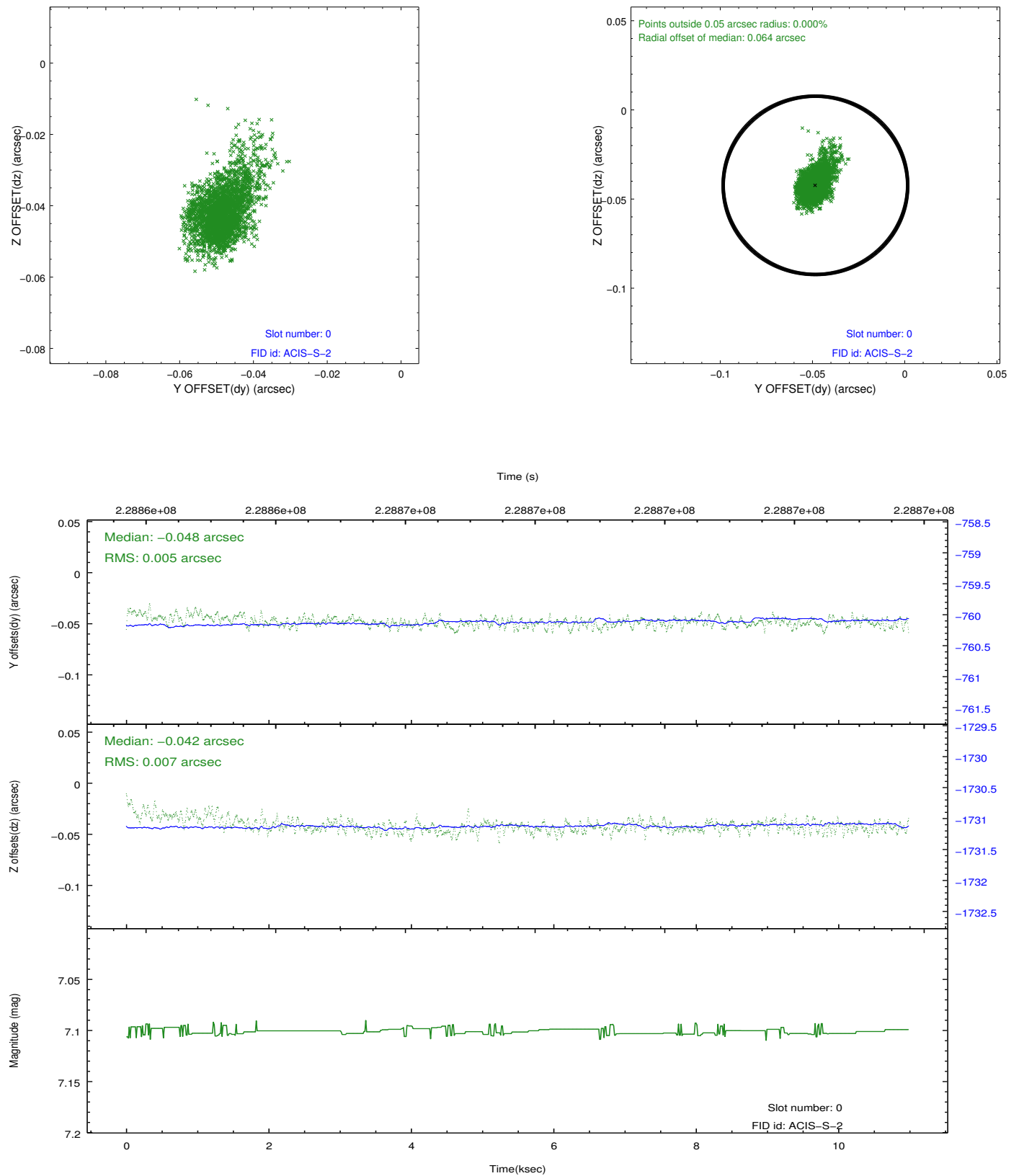


2.4.5 Slot 7

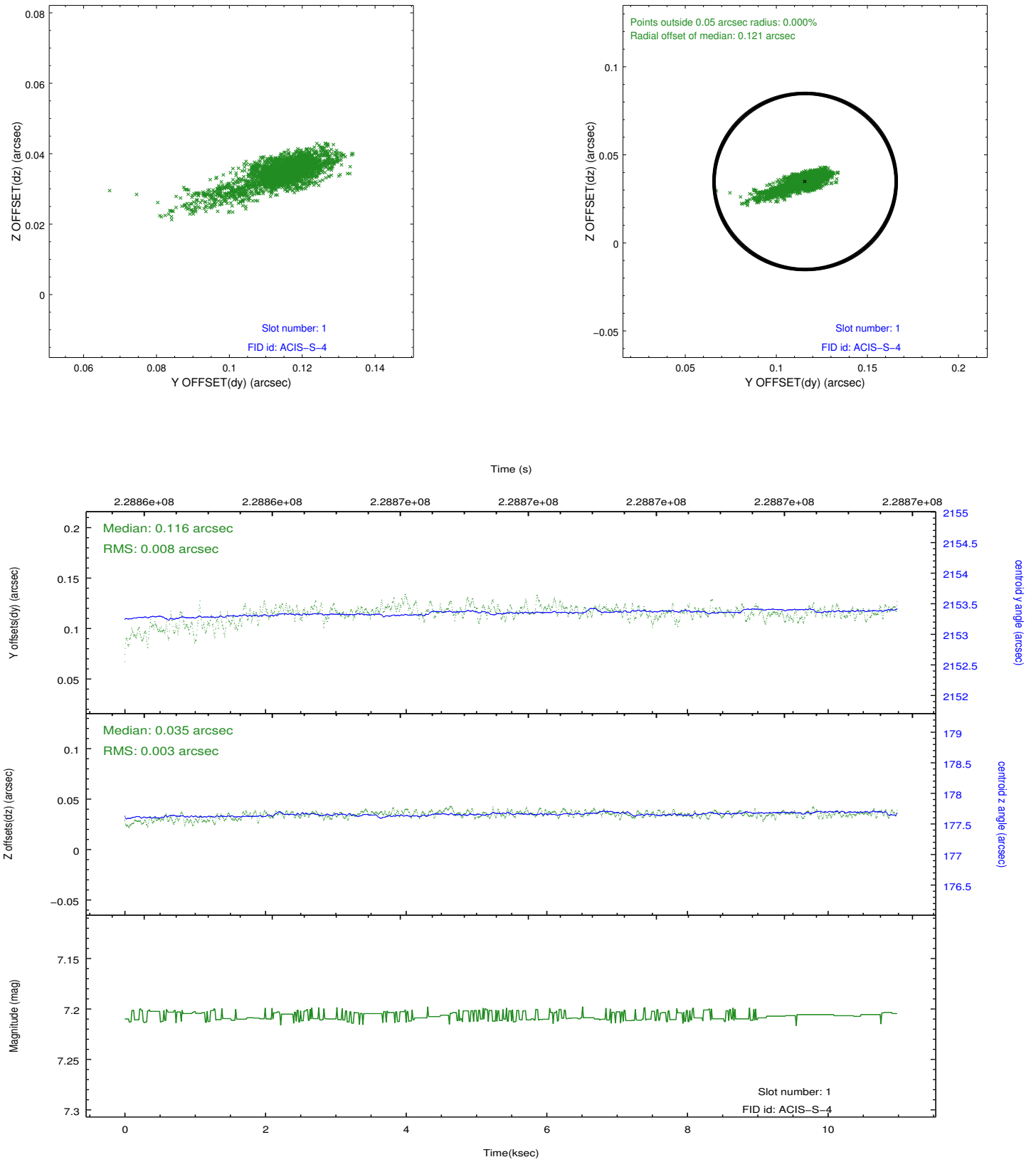


2.5 FID Slots

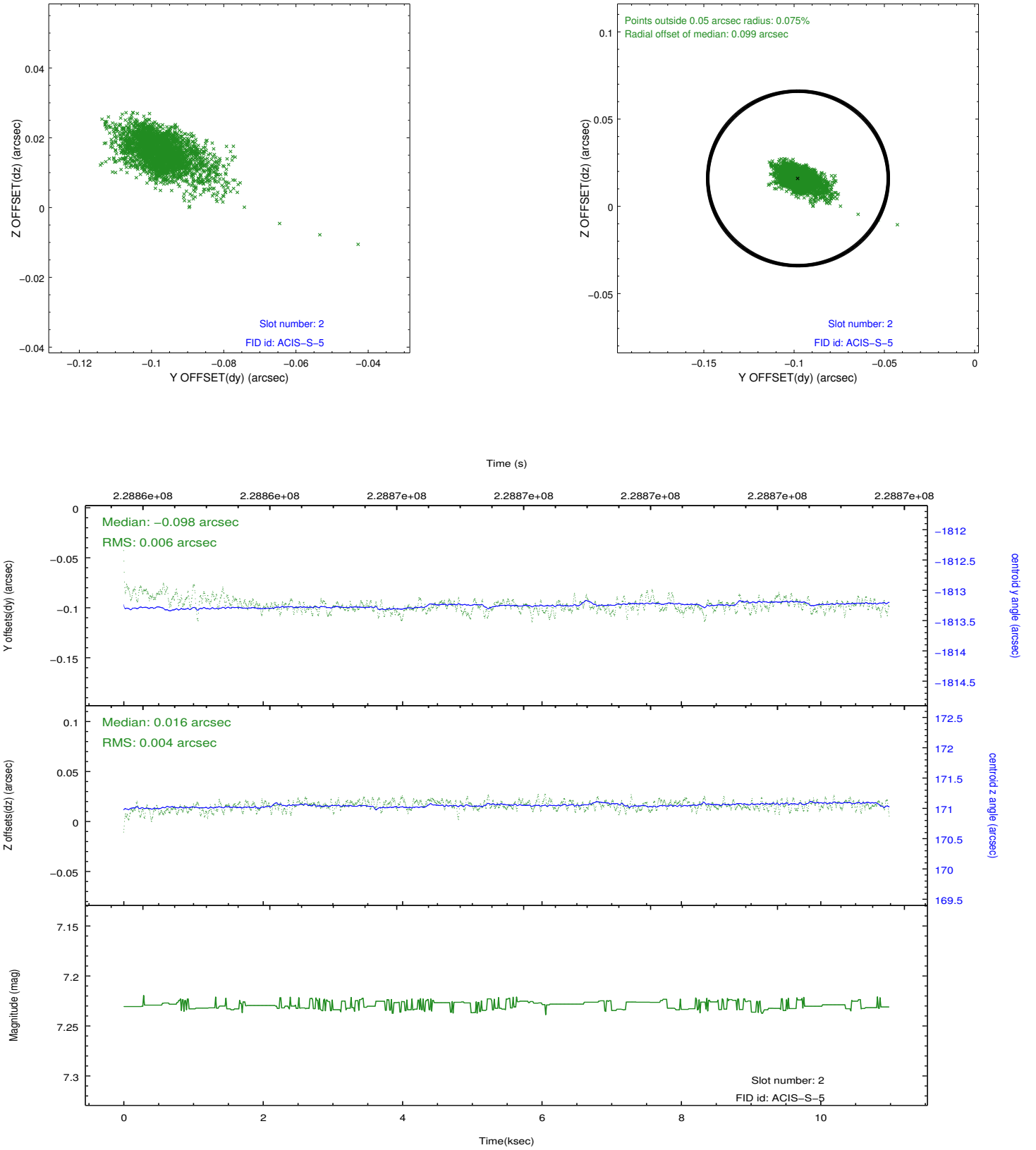
2.5.1 Slot 0



2.5.2 Slot 1



2.5.3 Slot 2



A Summary

A.1 Status

V&V Scientist	Jen Lauer
V&V Date (YYYY-MM-DD)	2013.01.14
V&V Edition	1
V&V Disposition and Status	OK
V&V Charge Time	9.955199

A.2 Comments