

V&V Reference Report

L2 ASCDS Version : 8.5.1

Observation 5608 - L2 Version 3
Chandra X-Ray Center

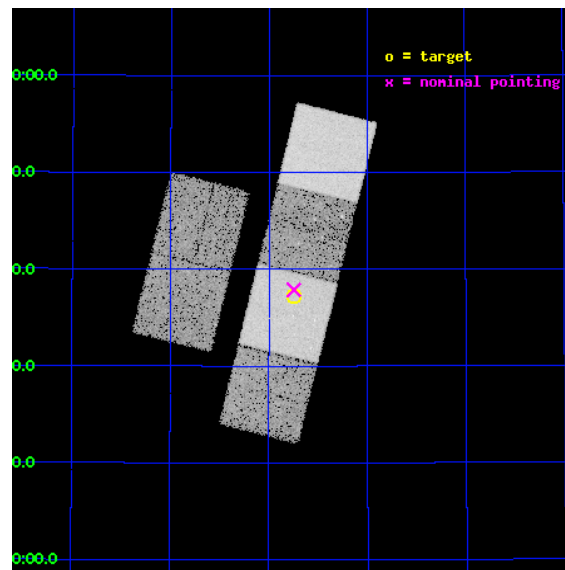
L2 Processing Date : Dec 16 2012

Contents

1	Front	2
2	OBI	3
2.1	OBI	3
2.1.1	Images	3
2.1.2	Bias	3
2.1.3	Parameters	4
2.1.4	Events	4
2.2	Compared Parameters	5
2.3	Aspect	6
2.4	Star Slots	9
2.4.1	Slot 3	9
2.4.2	Slot 4	10
2.4.3	Slot 5	11
2.4.4	Slot 6	12
2.4.5	Slot 7	13
2.5	FID Slots	14
2.5.1	Slot 0	14
2.5.2	Slot 1	15
2.5.3	Slot 2	16
A	Summary	17
A.1	Status	17
A.2	Comments	17

1 Front

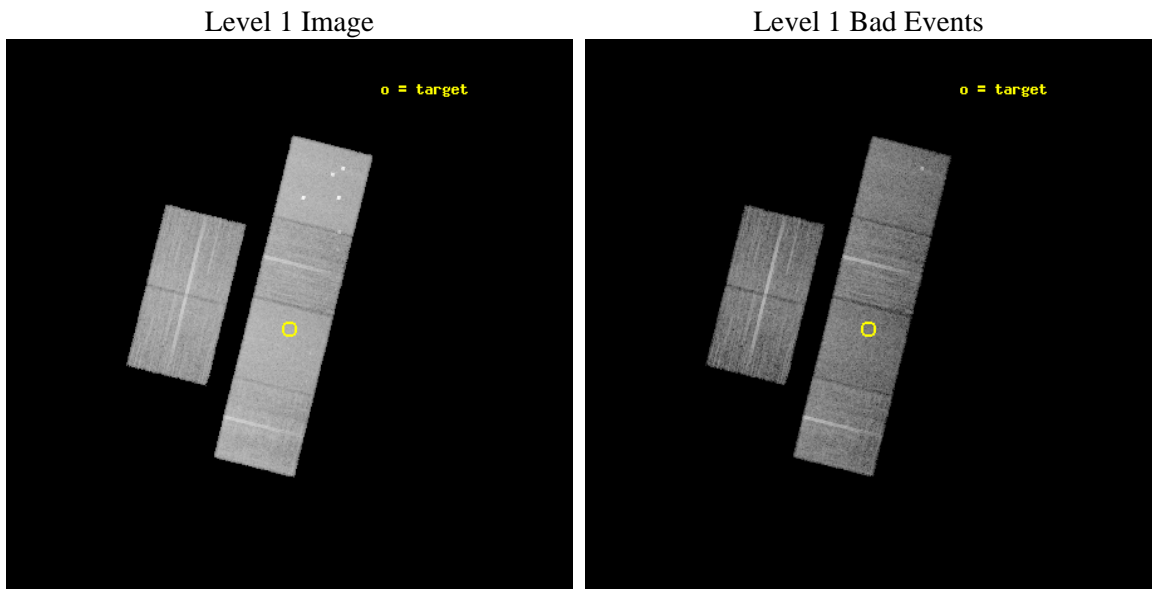
seq_num	701031	Sequence number
obs_id	5608	Observation id
title	A Chandra Survey of the Most Distant Quasars: X-raying the First Massive Black Holes	Proposal title
observer	Prof. William Brandt	Principal investigator
object	SDSS J1048+4637	Source name
dtcycle	0	
cycle	P	events from which exps? Prim/Second/Both
ra_targ	162.1875	Observer's specified target RA [deg]
dec_targ	46.62175	Observer's specified target Dec [deg]
ra_nom	162.18654435051	Nominal RA [deg]
dec_nom	46.631401883739	Nominal Dec [deg]
roll_nom	103.9078633252	Nominal Roll [deg]
revision	3	Processing version of data
ontime	15157.429184765	Sum of GTIs [s]
livetime	14965.496689719	Livetime [s]
ontime2	15157.470224768	Sum of GTIs [s]
ontime3	15157.306064755	Sum of GTIs [s]
ontime5	15157.388144761	Sum of GTIs [s]
ontime6	15154.106134474	Sum of GTIs [s]
ontime7	15157.429184765	Sum of GTIs [s]
ontime8	15154.024054497	Sum of GTIs [s]
l2events	171673	Number of level 2 events



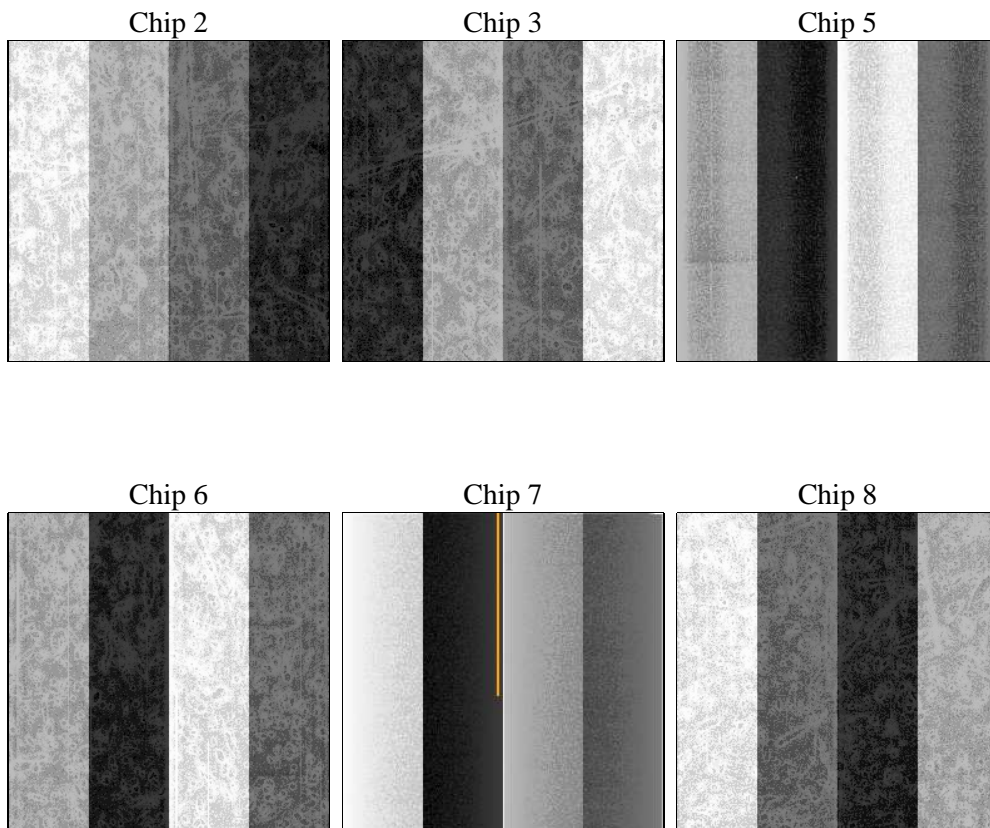
2 OBI

2.1 OBI

2.1.1 Images



2.1.2 Bias



2.1.3 Parameters

obi_num	0	Obi number	sched_exp_time	15200.000000	[s] Scheduled observation exposure time
ascdsver	8.5.1	Processing system revision	ontime	15157.429184765	Sum of GTIs [s]
caldsver	4.5.5	 	ontime2	15157.470224768	Sum of GTIs [s]
date	2012-12-15T23:07:19	Date and time of file creation	ontime3	15157.306064755	Sum of GTIs [s]
revision	3	Processing version of data	ontime5	15157.388144761	Sum of GTIs [s]
			ontime6	15154.106134474	Sum of GTIs [s]
			ontime7	15157.429184765	Sum of GTIs [s]
			ontime8	15154.024054497	Sum of GTIs [s]
			l1events	769610	Number of level 1 events

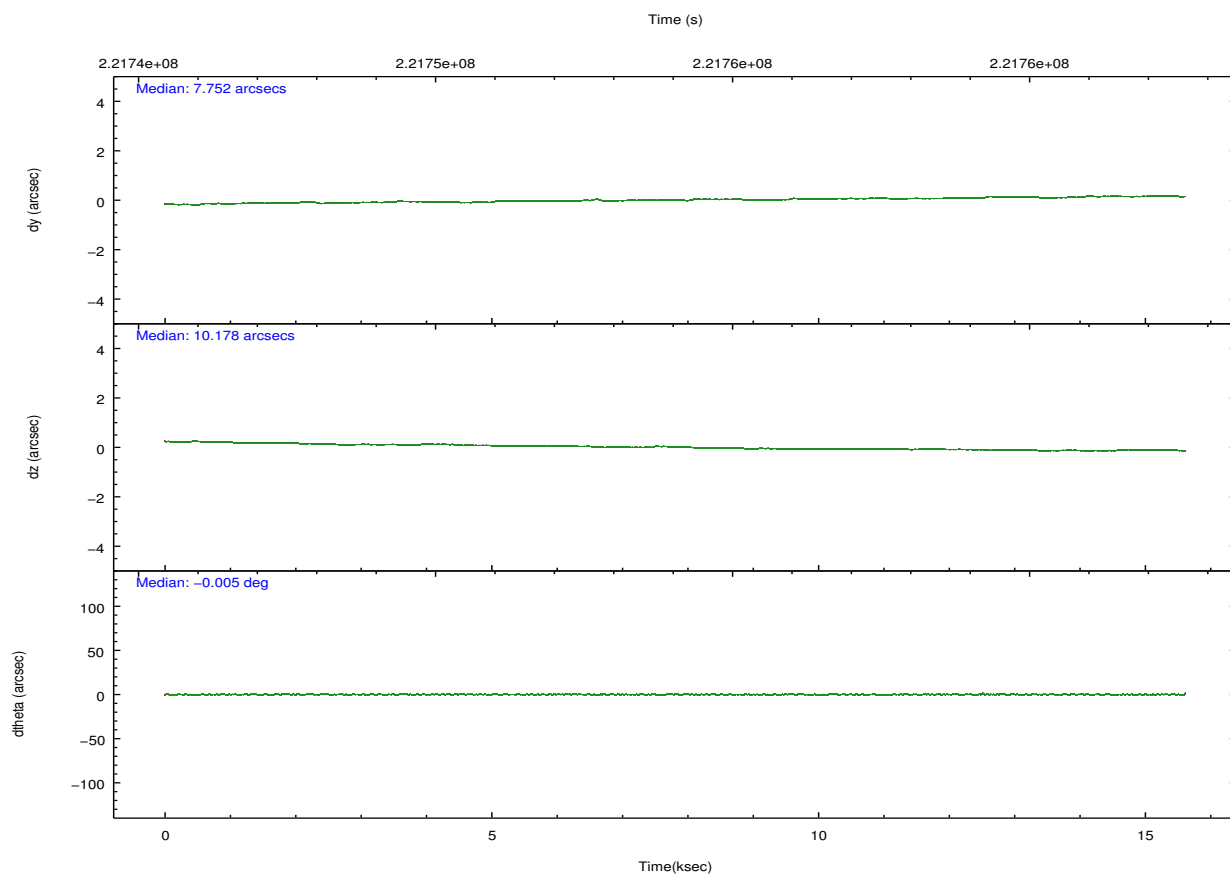
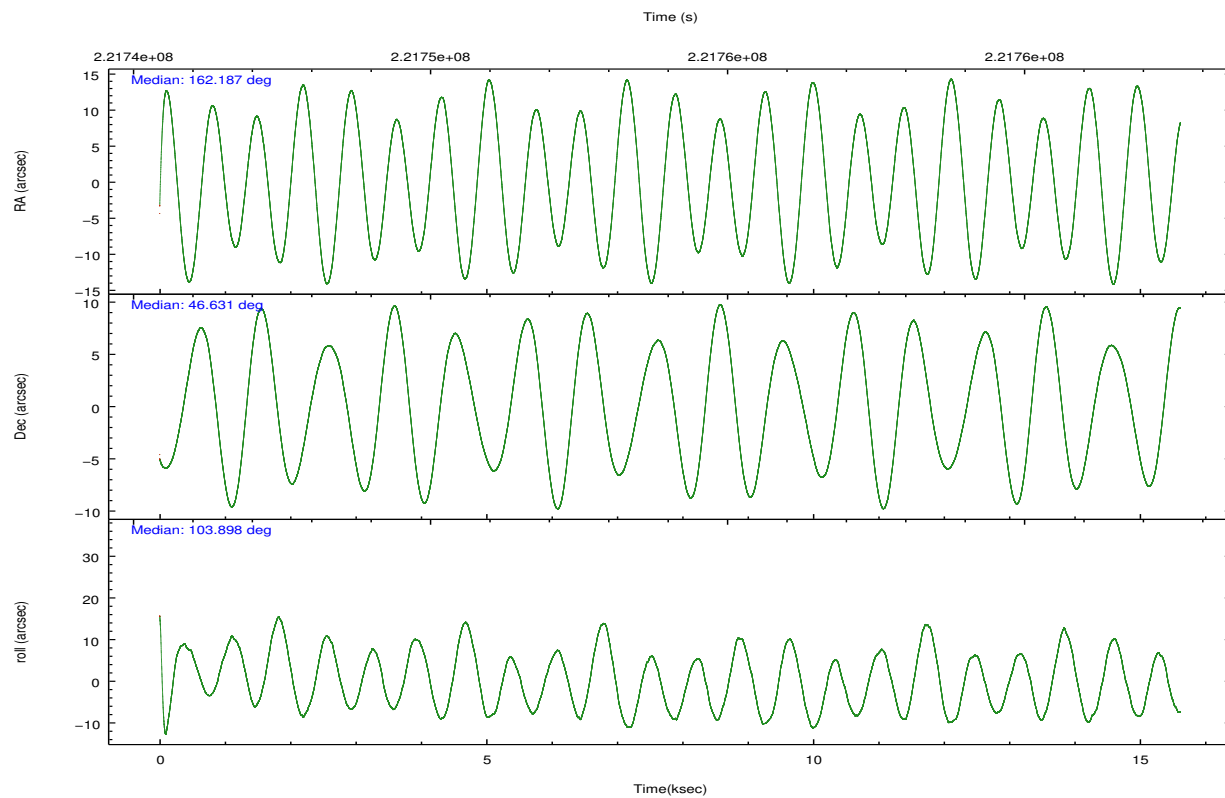
2.1.4 Events

	ccd 2	ccd 3	ccd 5	ccd 6	ccd 7	ccd 8		ccd 2	ccd 3	ccd 5	ccd 6	ccd 7	ccd 8
level 1 events	108624	104199	167232	108729	144549	136277	grade 0 events	5635	5337	13523	5217	5342	9343
rejected events	95880	91940	87357	95702	85007	106945		5%	5%	8%	4%	3%	6%
rejected %	88%	88%	52%	88%	58%	78%	grade 1 events	68	69	220	51	136	97
								0%	0%	0%	0%	0%	0%
							grade 2 events	2673	2330	22385	2675	11971	6415
								2%	2%	13%	2%	8%	4%
							grade 3 events	1181	1229	2800	1238	5259	3204
								1%	1%	1%	1%	3%	2%
							grade 4 events	1141	1143	2716	1288	5071	2873
								1%	1%	1%	1%	3%	2%
							grade 5 events	4321	4730	11694	5046	13702	6470
								3%	4%	6%	4%	9%	4%
							grade 6 events	2115	2224	38470	2614	31916	7500
								1%	2%	23%	2%	22%	5%
							grade 7 events	91490	87137	75424	90600	71152	100375
								84%	83%	45%	83%	49%	73%

2.2 Compared Parameters

Parameter	Planned	Actual	Parameter	Planned	Actual
Instrument	ACIS	ACIS	Obspar format version number	7	7
Detector	ACIS-235678	ACIS-235678	Obspar file type	PREDICTED	ACTUAL
Grating	NONE	NONE	Obspar update status	NONE	UPDATED
Data mode	FAINT	FAINT	Number of optional ACIS chips dropped	0	0
Observation mode	POINTING	POINTING	On-chip summing requested	N	N
[deg] Pointing RA	162.214439	162.1865443505069	Subarray requested	NONE	NONE
[deg] Pointing Dec	46.612028	46.63140188373905	Alternating exposures requested	N	N
[deg] Pointing Roll	103.730944	103.9078633251977	[s] Primary exposure time	0.000000	3.2
[mm] SIM focus pos	-0.684267	-0.6828225247311905			
[mm] SIM defocus	0	0.001444936568705701			
[mm] SIM translation stage pos	-190.132523	-190.1425803651734			
[mm] SIM translation stage offset	0	0.01005778216563158			
[s] Observation start time (MET)	221746638.184000	221745561.71149			
Observation start date	2005-01-10T12:16:14	2005-01-10T11:59:21			
[s] Observation end time (MET)	221761838.184000	221762798.11227			
Observation end date	2005-01-10T16:29:34	2005-01-10T16:46:38			
Read mode	TIMED	TIMED			

2.3 Aspect

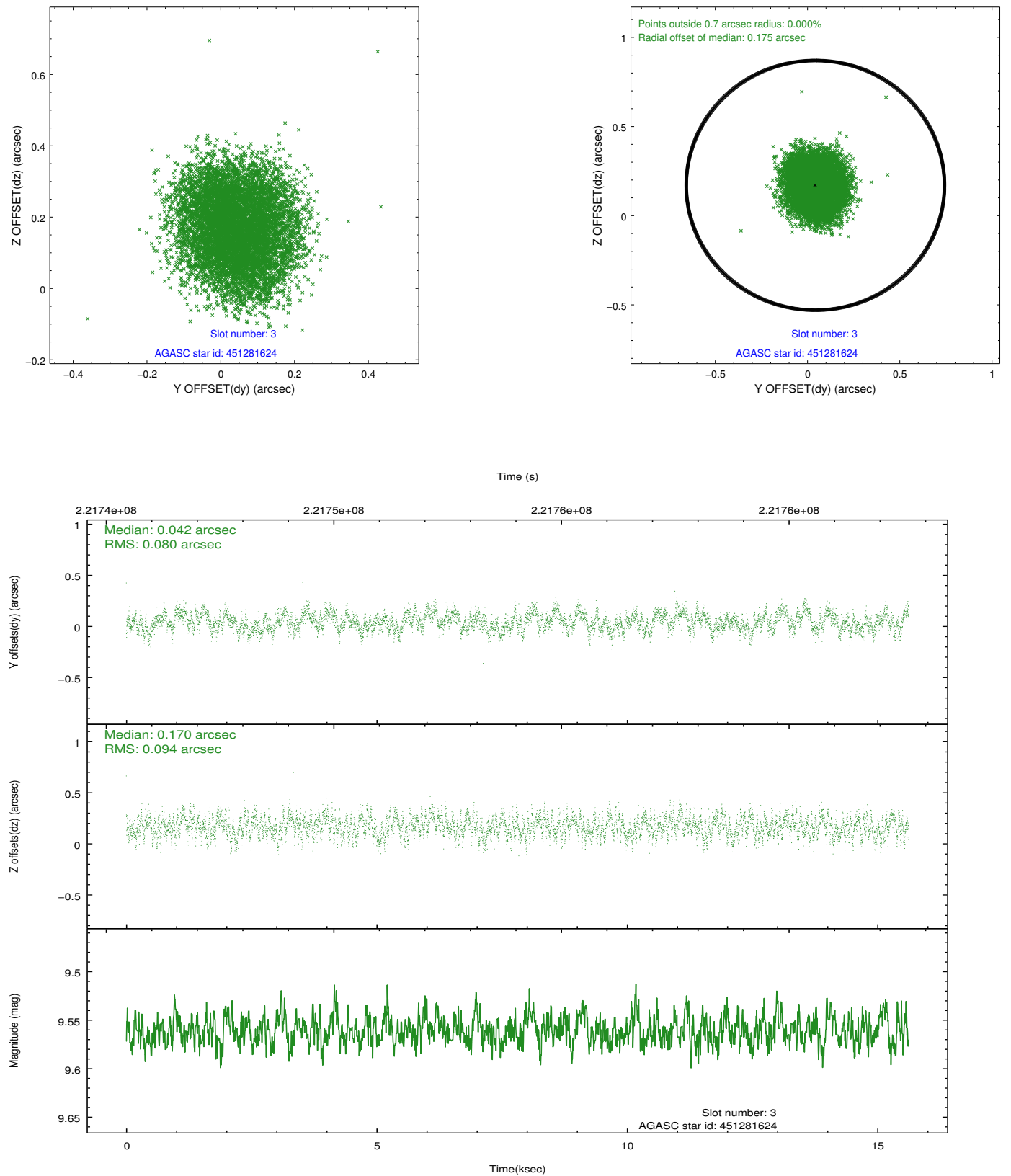


Slot Statistics

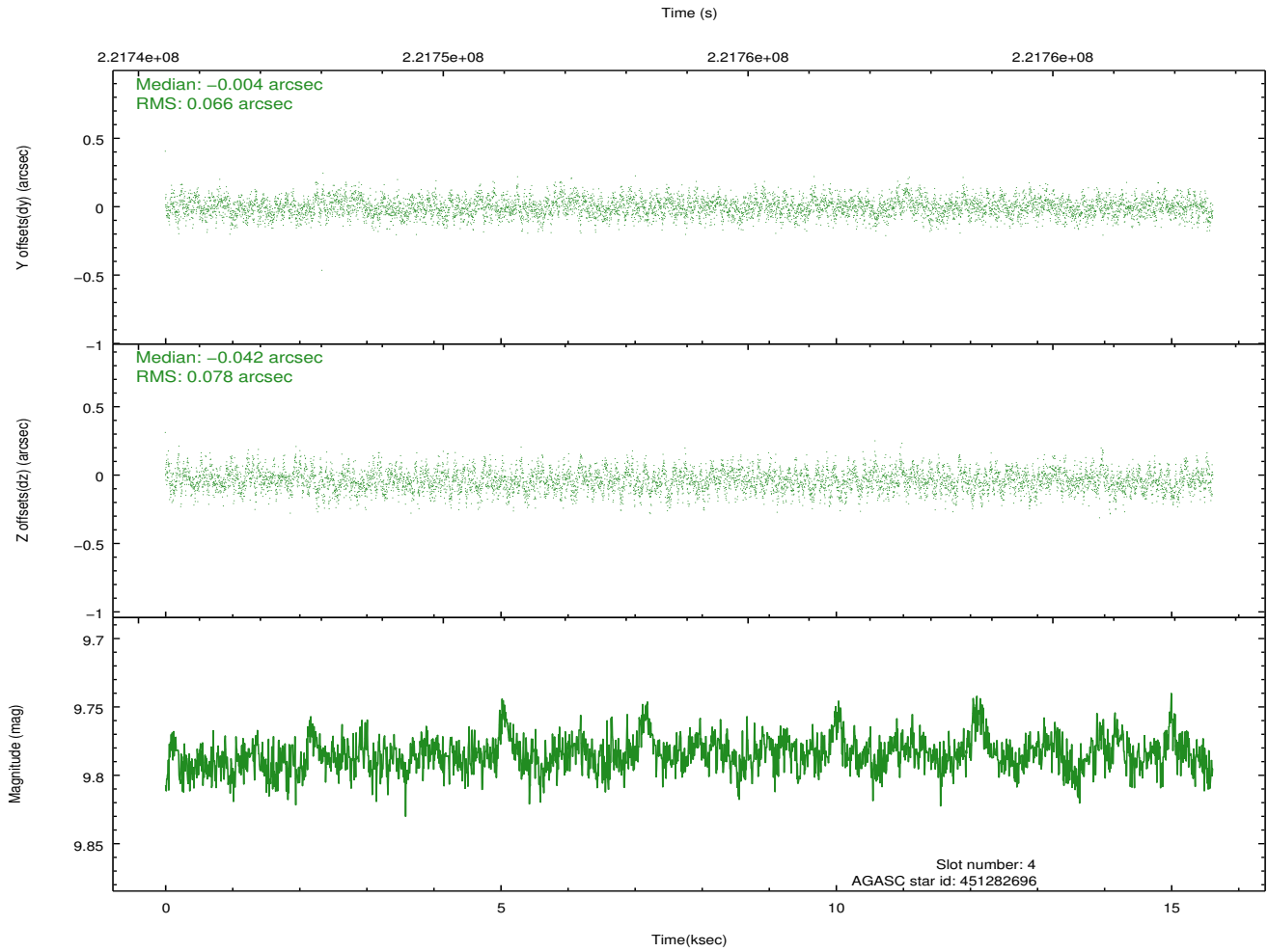
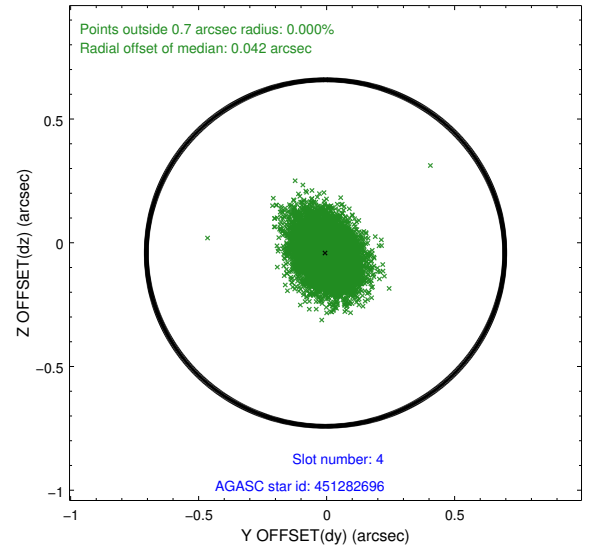
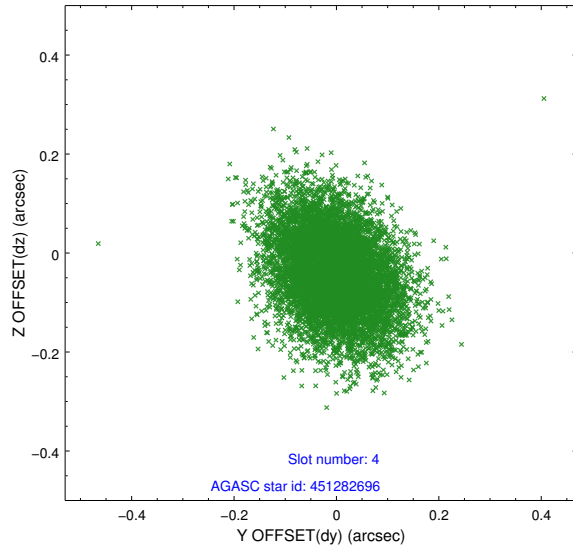
slot	status	id	mag	n_pts	med_dy	med_dz	dr1	dr2	ra	dec	mean_y	mean_z
0	FID	ACIS-S-2	7.10	3810	-0.042	-0.017	0.008	0.013	0.000000	0.000000	-760.53	-1731.42
1	FID	ACIS-S-4	7.21	3810	0.094	0.025	0.007	0.015	0.000000	0.000000	2152.71	176.88
2	FID	ACIS-S-5	7.23	3810	-0.083	0.000	0.008	0.015	0.000000	0.000000	-1813.09	170.75
3	GUIDE	451281624	9.56	7616	0.042	0.170	0.135	0.205	163.194077	46.599941	-602.17	-2346.73
4	GUIDE	451282696	9.78	7615	-0.004	-0.042	0.108	0.179	161.725710	46.479512	-172.26	1289.19
5	GUIDE	451282936	8.57	7620	0.010	-0.022	0.073	0.116	162.459366	46.640990	-41.06	-612.48
6	GUIDE	451283456	8.09	7552	-0.116	-0.048	0.067	0.109	162.810909	46.796278	301.11	-1586.14
7	GUIDE	451287144	9.45	7612	0.066	-0.058	0.096	0.156	162.898016	46.292040	-1515.05	-1380.30

2.4 Star Slots

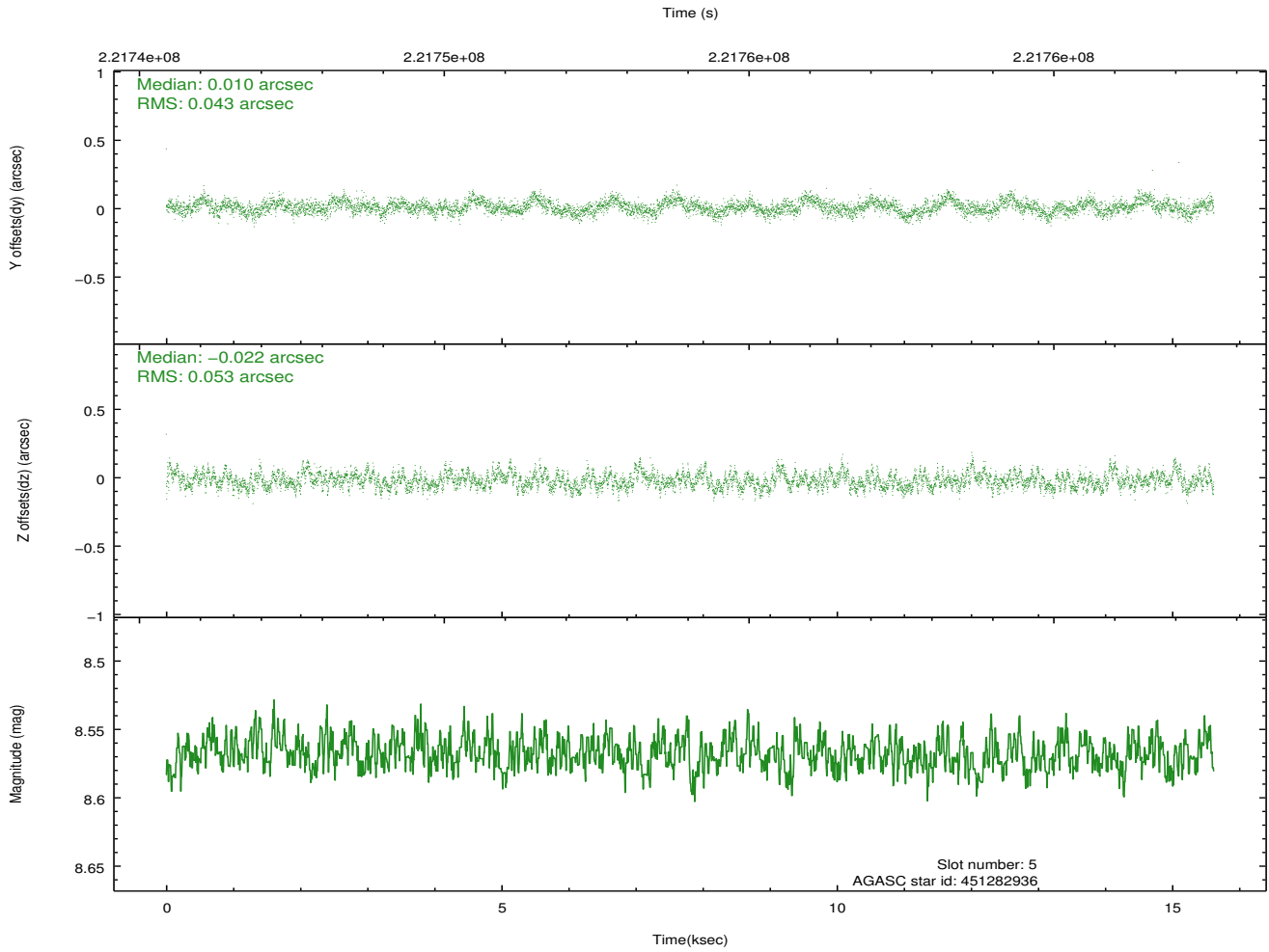
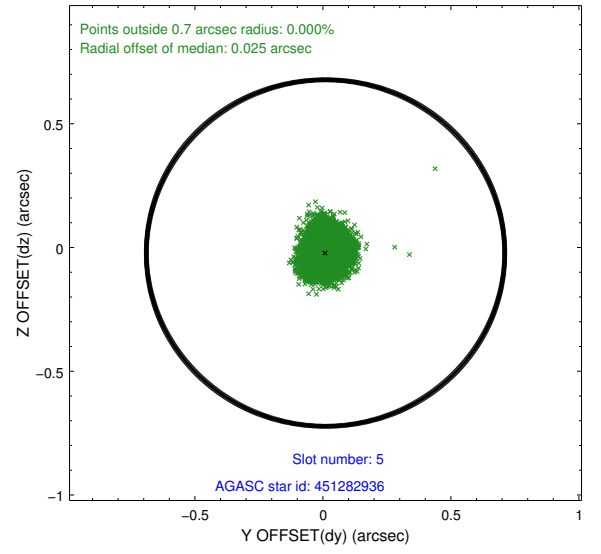
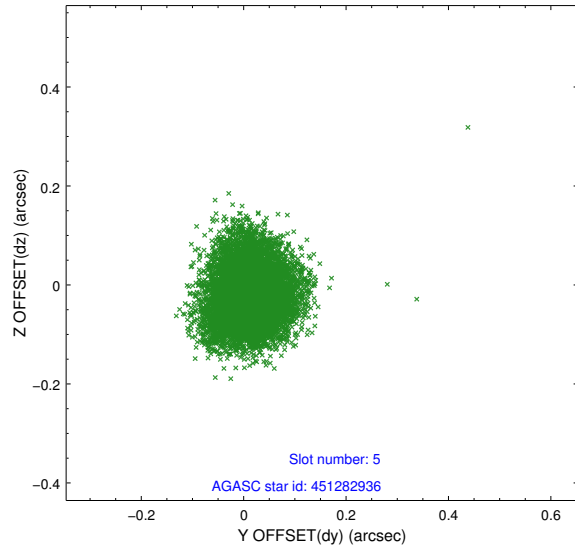
2.4.1 Slot 3



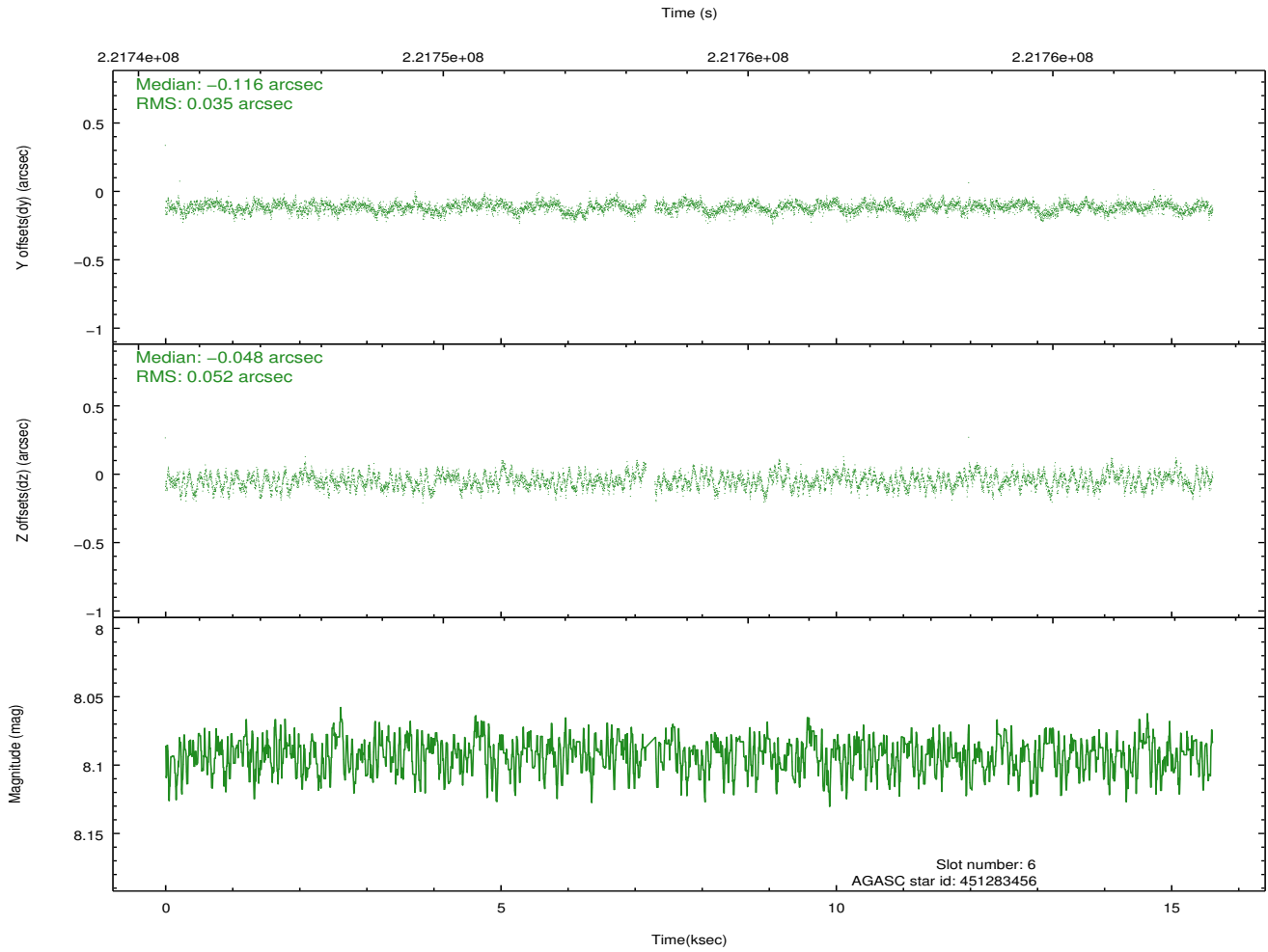
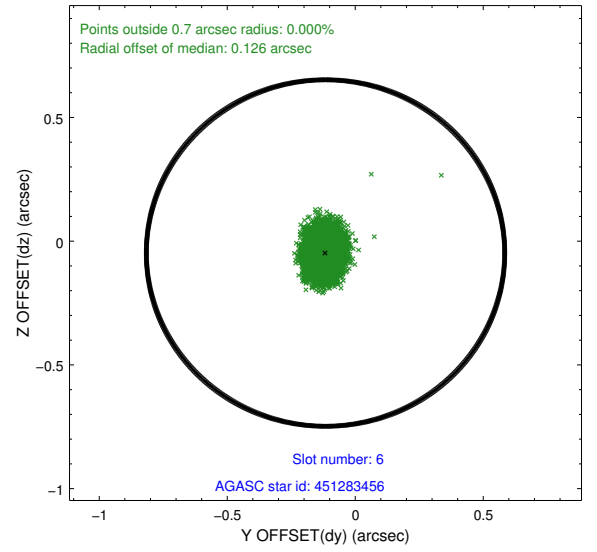
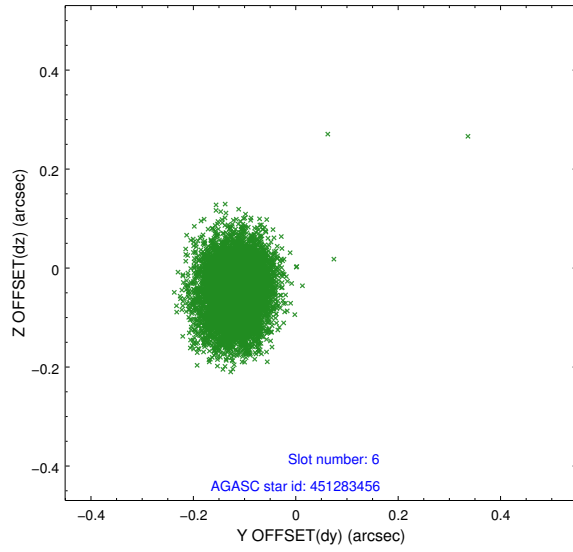
2.4.2 Slot 4



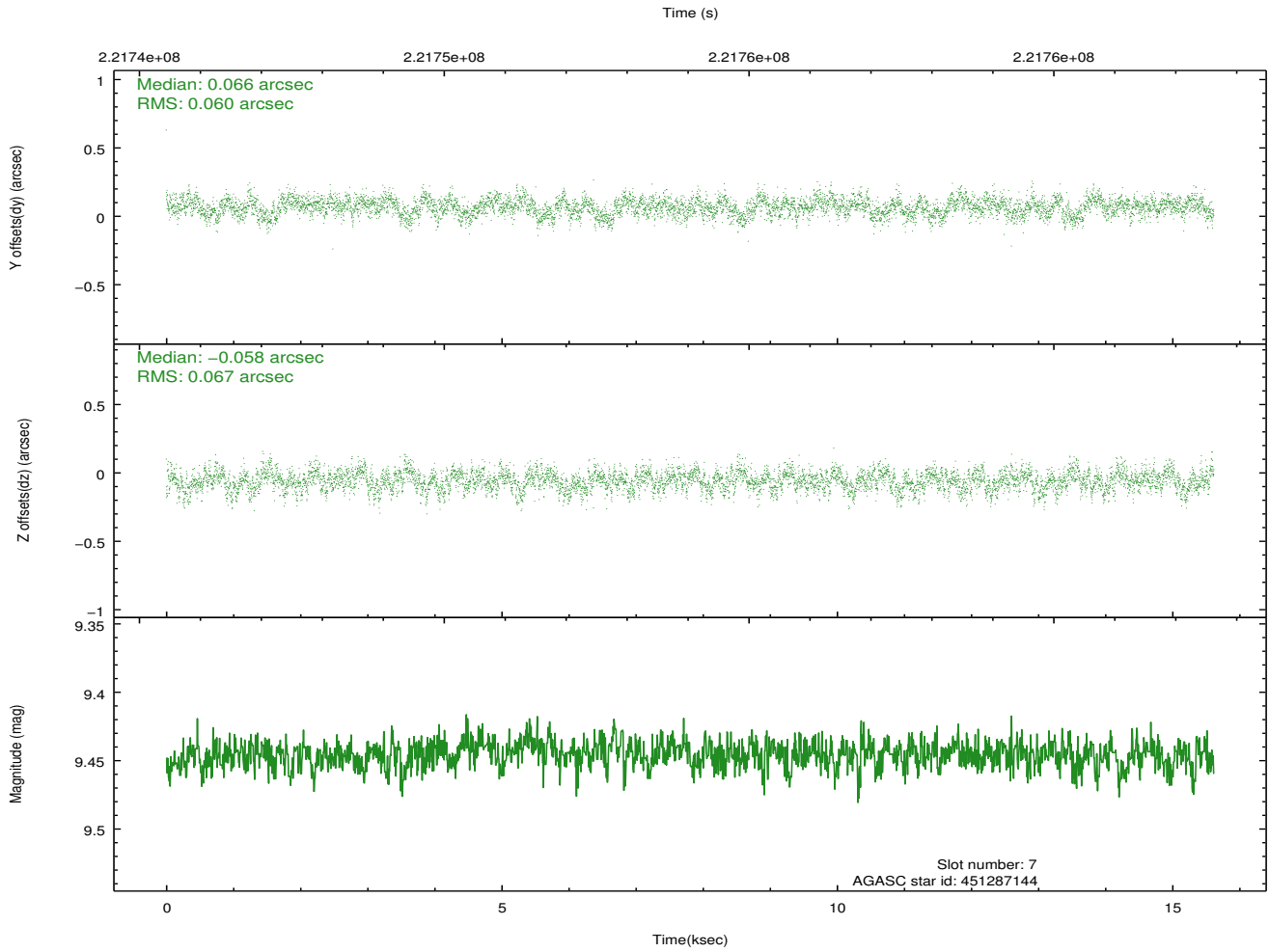
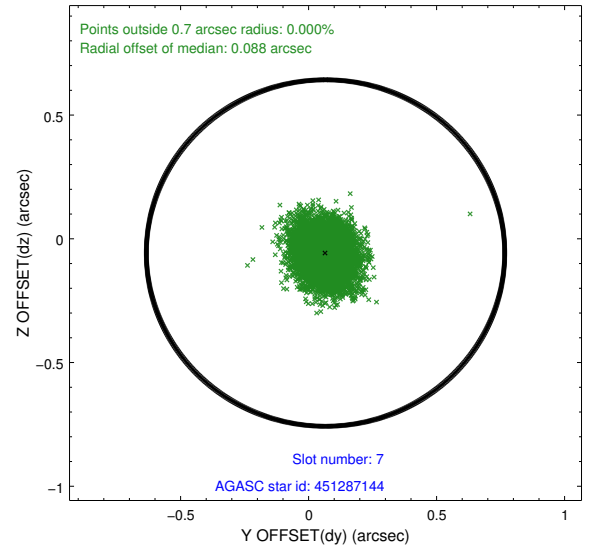
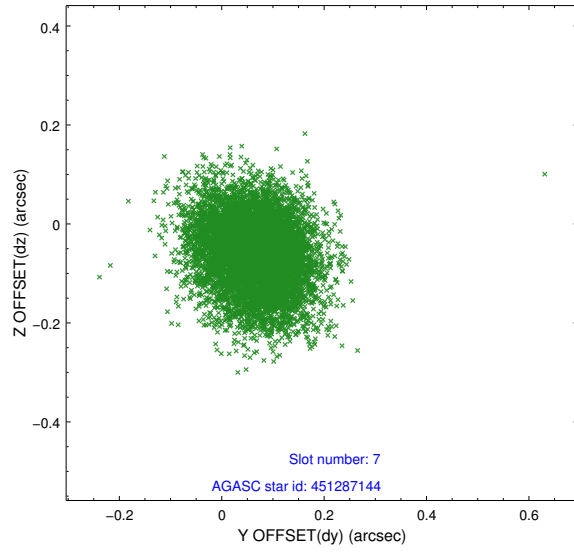
2.4.3 Slot 5



2.4.4 Slot 6

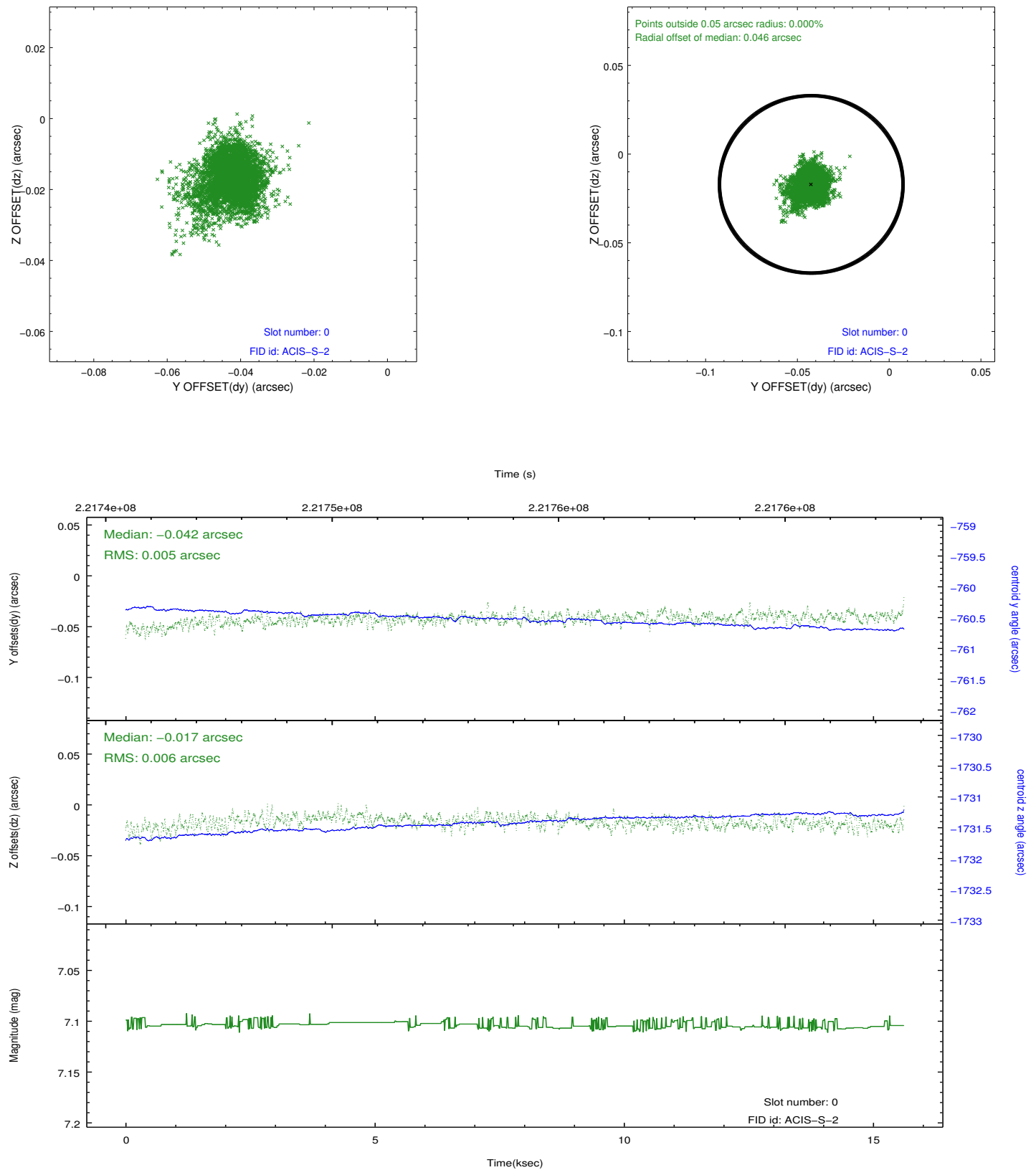


2.4.5 Slot 7

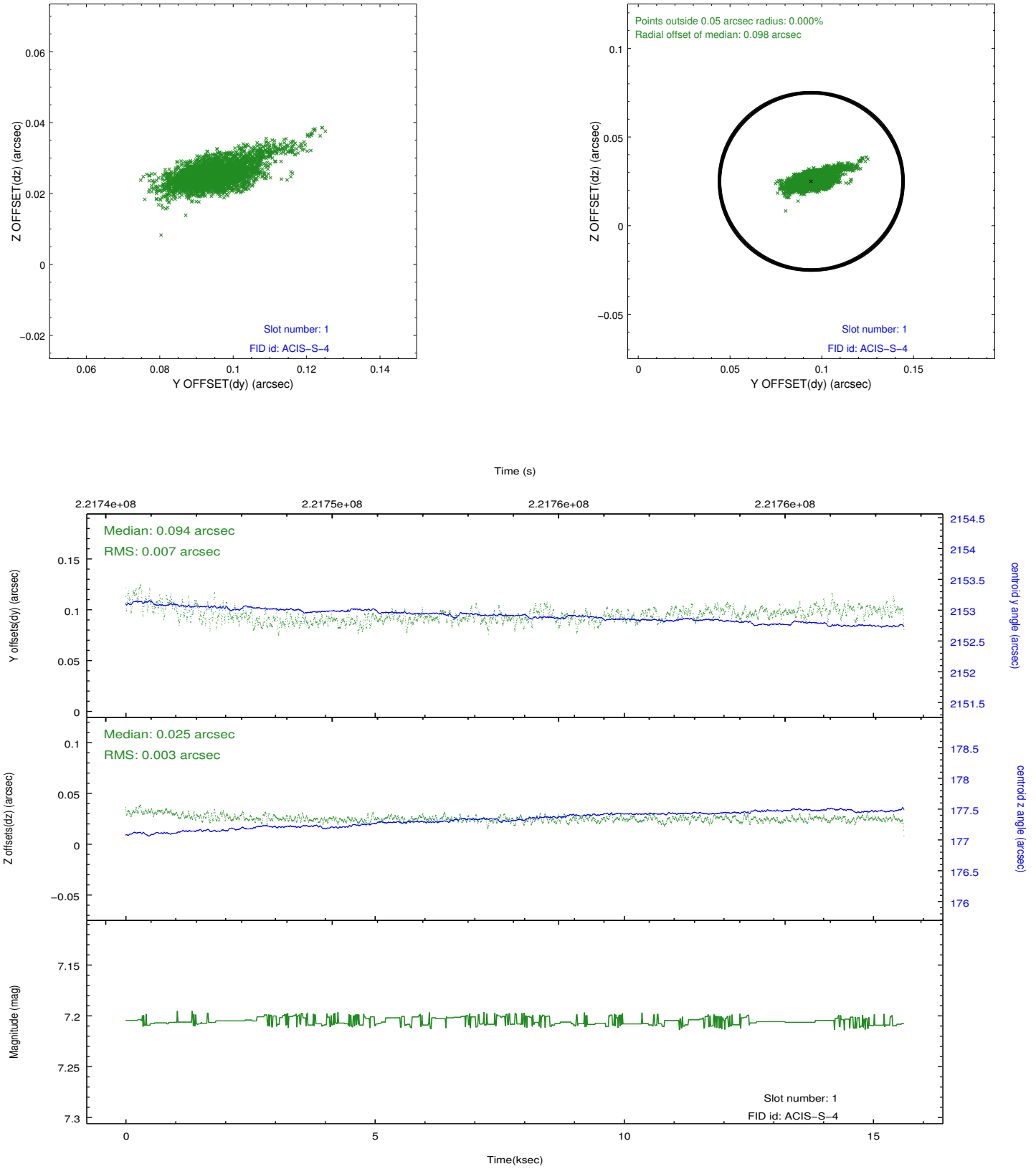


2.5 FID Slots

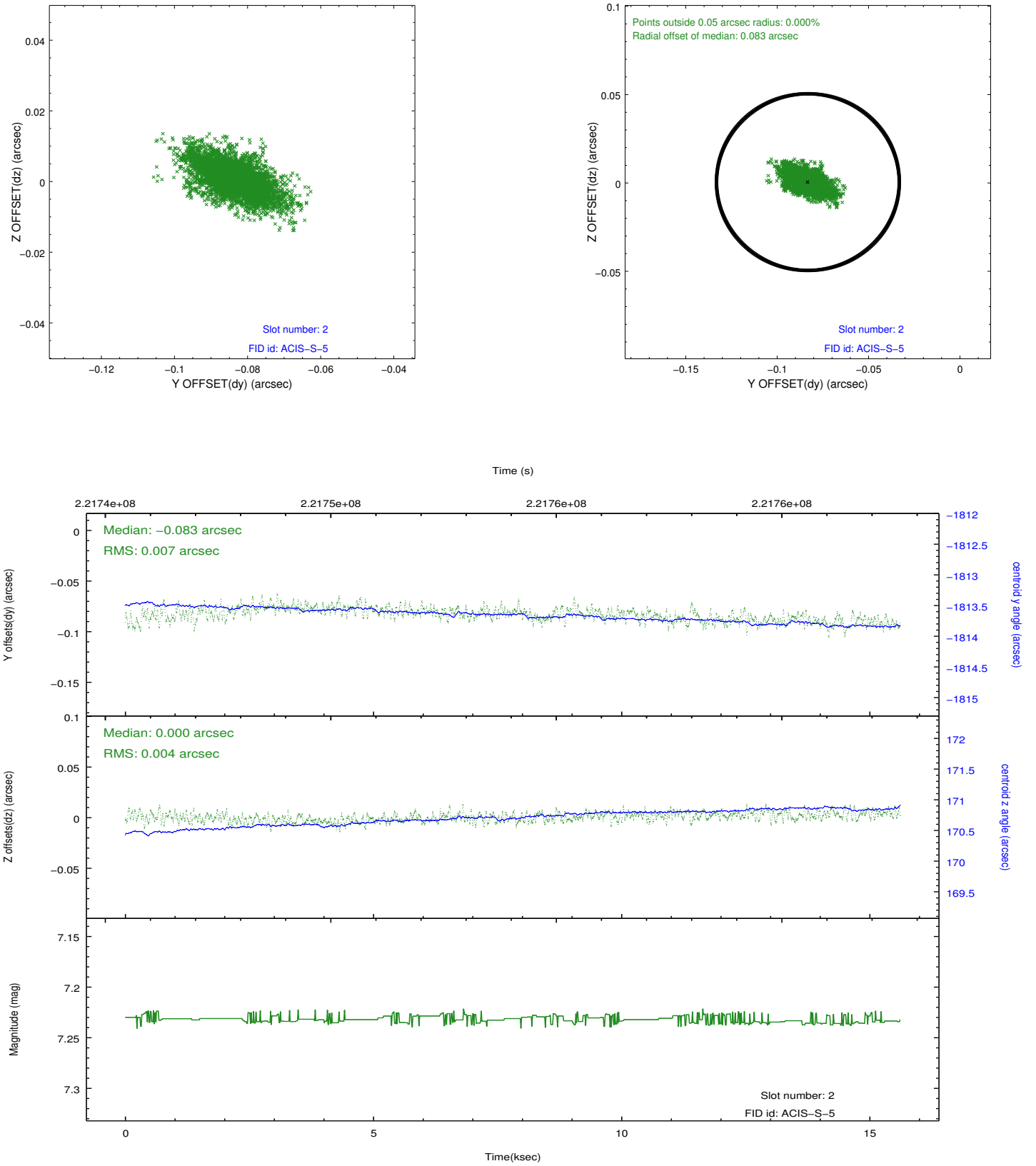
2.5.1 Slot 0



2.5.2 Slot 1



2.5.3 Slot 2



A Summary

A.1 Status

V&V Scientist	Jen Lauer
V&V Date (YYYY-MM-DD)	2013.01.08
V&V Edition	1
V&V Disposition and Status	OK
V&V Charge Time	15.15839

A.2 Comments