

V&V Reference Report

L2 ASCDS Version : 8.5.1.1

Observation 5930 - L2 Version 3
Chandra X-Ray Center

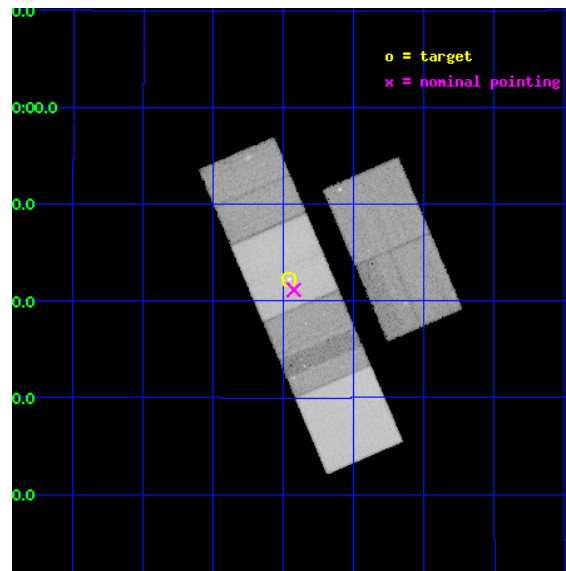
L2 Processing Date : Dec 23 2012

Contents

1	Front	2
2	OBI	3
2.1	OBI	3
2.1.1	Images	3
2.1.2	Bias	3
2.1.3	Parameters	4
2.1.4	Events	4
2.2	Compared Parameters	5
2.3	Aspect	6
2.4	Star Slots	9
2.4.1	Slot 3	9
2.4.2	Slot 4	10
2.4.3	Slot 5	11
2.4.4	Slot 6	12
2.4.5	Slot 7	13
2.5	FID Slots	14
2.5.1	Slot 0	14
2.5.2	Slot 1	15
2.5.3	Slot 2	16
A	Summary	17
A.1	Status	17
A.2	Comments	17

1 Front

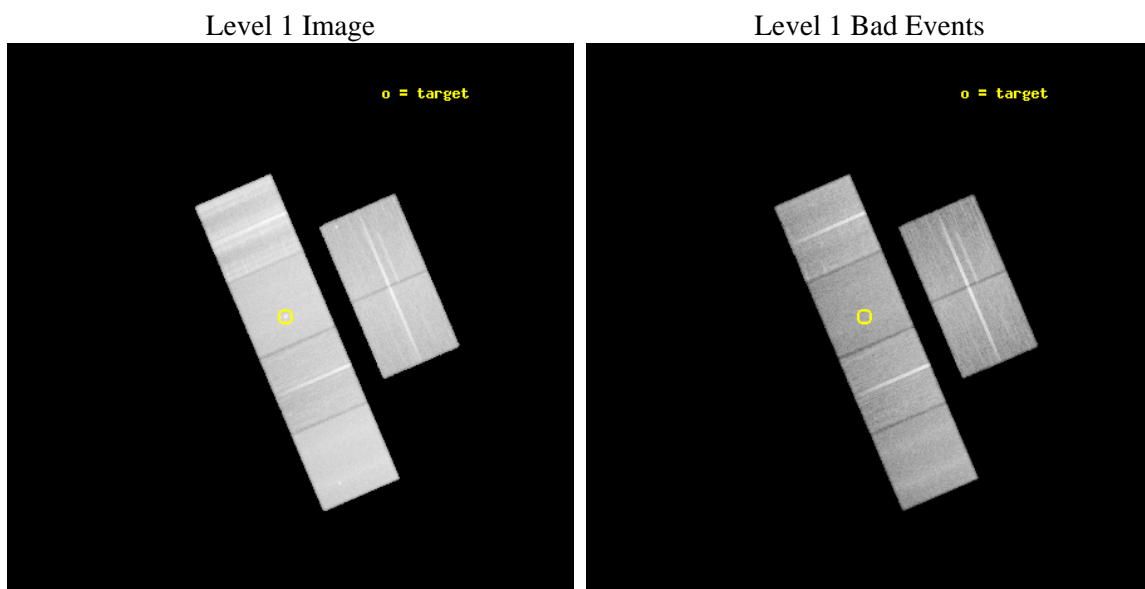
seq_num	600449	Sequence number
obs_id	5930	Observation id
title	X-rays and Galactic Structure	Proposal title
observer	Douglas Swartz	Principal investigator
object	NGC 3351	Source name
dtcycle	0	
cycle	P	events from which exps? Prim/Second/Both
ra_targ	160.991667	Observer's specified target RA [deg]
dec_targ	11.704167	Observer's specified target Dec [deg]
ra_nom	160.98172593557	Nominal RA [deg]
dec_nom	11.685824694522	Nominal Dec [deg]
roll_nom	246.79822903262	Nominal Roll [deg]
revision	3	Processing version of data
ontime	39955.199851155	Sum of GTIs [s]
livetime	39449.263052507	Livetime [s]
ontime2	39948.717930406	Sum of GTIs [s]
ontime3	39951.958880872	Sum of GTIs [s]
ontime5	39955.199851155	Sum of GTIs [s]
ontime6	39955.199851155	Sum of GTIs [s]
ontime7	39955.199851155	Sum of GTIs [s]
ontime8	39955.199851155	Sum of GTIs [s]
l2events	591966	Number of level 2 events



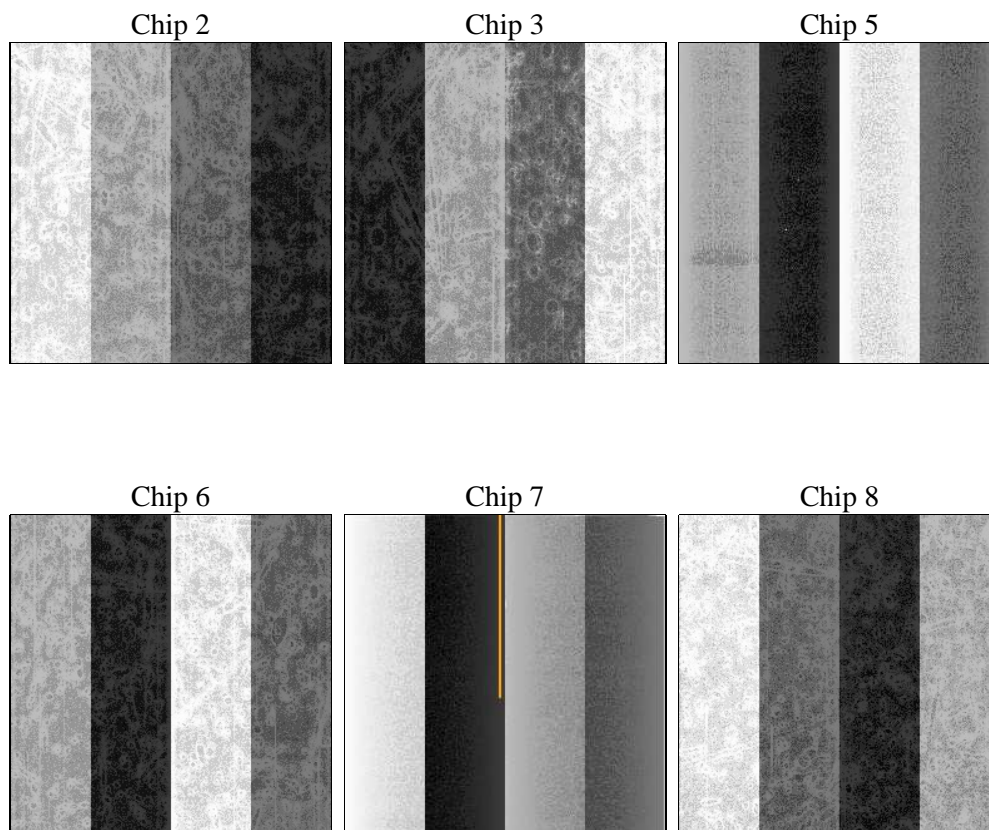
2 OBI

2.1 OBI

2.1.1 Images



2.1.2 Bias



2.1.3 Parameters

obi_num	0	Obi number	sched_exp_time	40000.000000	[s] Scheduled observation exposure time
ascdsver	8.5.1.1	Processing system revision	ontime	39955.199851155	Sum of GTIs [s]
caldsver	4.5.5	 	ontime2	39948.717930406	Sum of GTIs [s]
date	2012-12-23T05:56:32	Date and time of file creation	ontime3	39951.958880872	Sum of GTIs [s]
revision	3	Processing version of data	ontime5	39955.199851155	Sum of GTIs [s]
			ontime6	39955.199851155	Sum of GTIs [s]
			ontime7	39955.199851155	Sum of GTIs [s]
			ontime8	39955.199851155	Sum of GTIs [s]
			l1events	2375229	Number of level 1 events

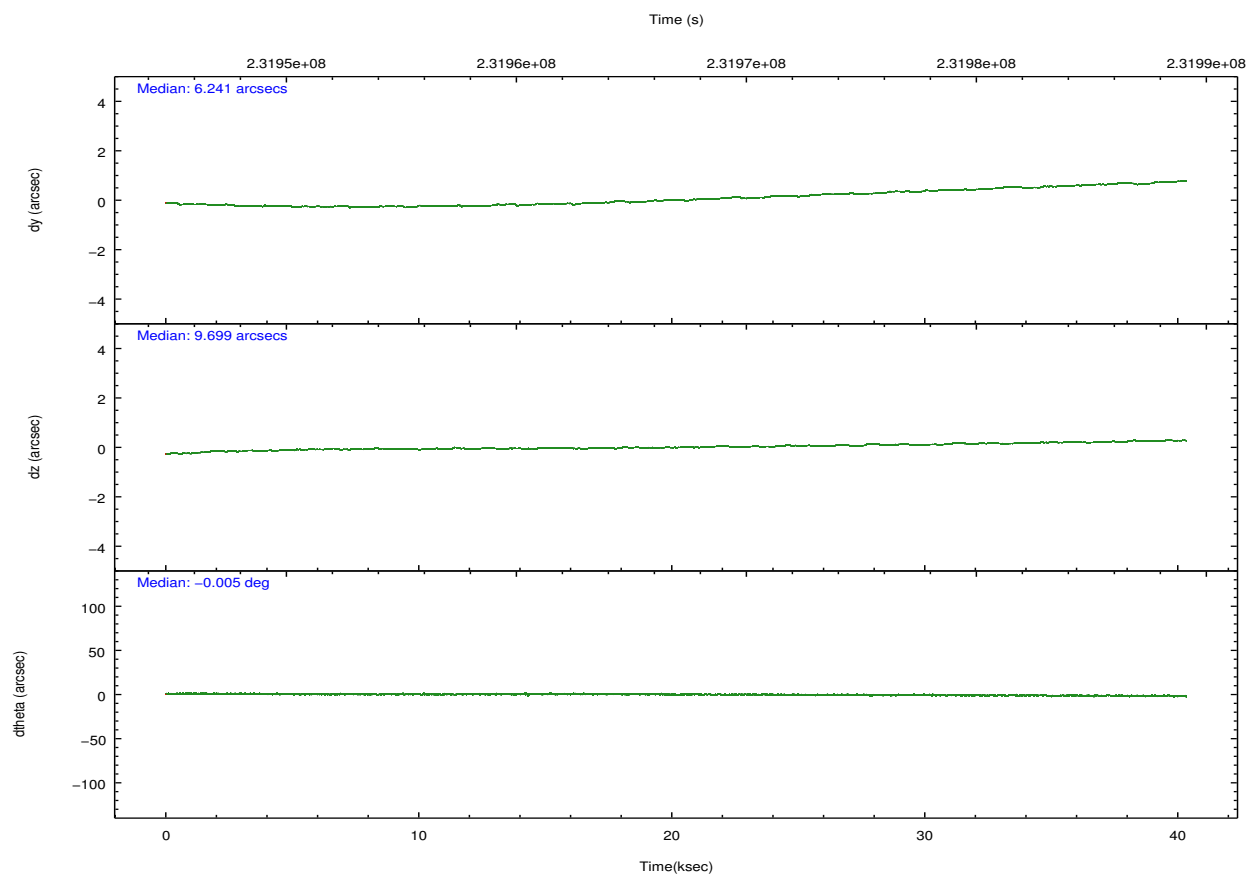
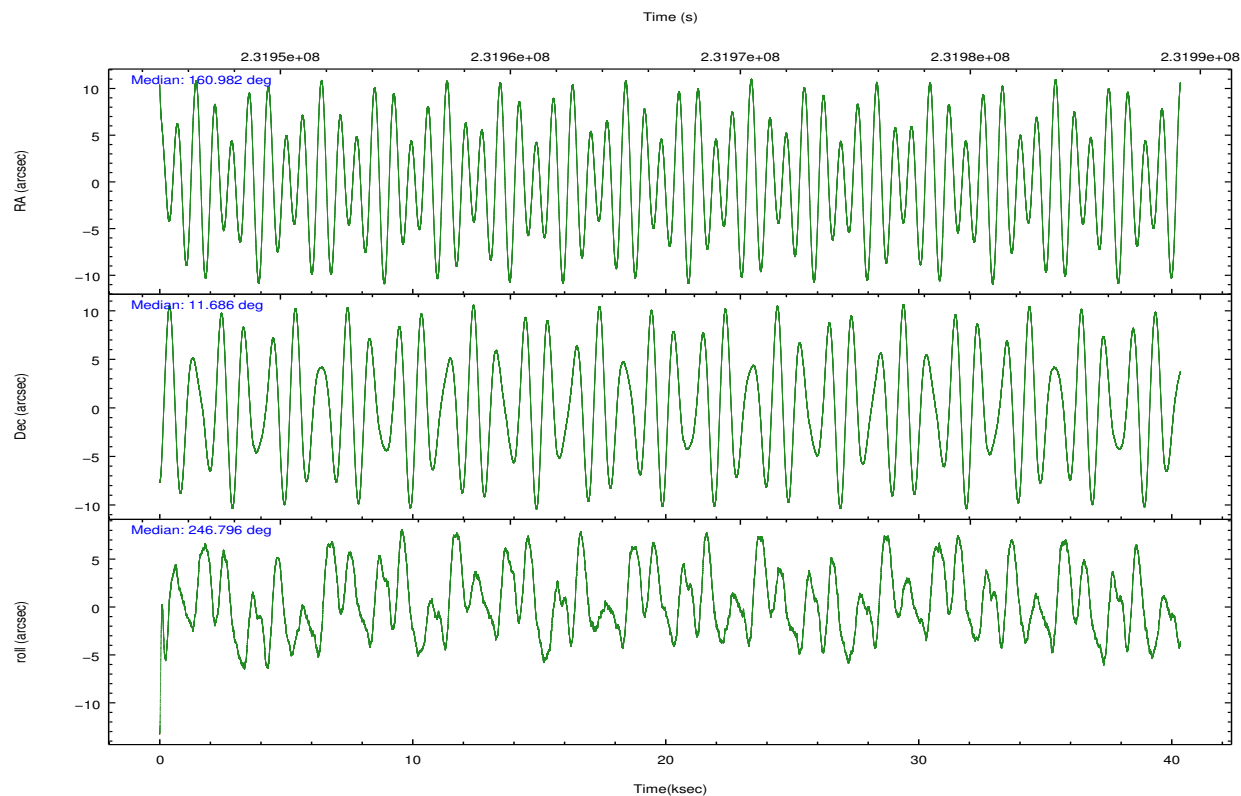
2.1.4 Events

	ccd 2	ccd 3	ccd 5	ccd 6	ccd 7	ccd 8		ccd 2	ccd 3	ccd 5	ccd 6	ccd 7	ccd 8
level 1 events	330841	318565	451599	335673	410923	527628	grade 0 events	25812	24447	13660	24528	16452	84347
rejected events	272660	258073	248499	273910	232740	308939		7%	7%	3%	7%	4%	15%
rejected %	82%	81%	55%	81%	56%	58%	grade 1 events	236	208	886	195	461	729
								0%	0%	0%	0%	0%	0%
							grade 2 events	14099	17708	62472	18720	36037	33627
								4%	5%	13%	5%	8%	6%
							grade 3 events	3416	3492	9196	3651	15453	33844
								1%	1%	2%	1%	3%	6%
							grade 4 events	4146	3707	8759	3539	15432	30218
								1%	1%	1%	1%	3%	5%
							grade 5 events	11439	12753	32045	13379	37341	18179
								3%	4%	7%	3%	9%	3%
							grade 6 events	10712	11152	109041	11333	94820	36665
								3%	3%	24%	3%	23%	6%
							grade 7 events	260981	245098	215540	260328	194927	290019
								78%	76%	47%	77%	47%	54%

2.2 Compared Parameters

Parameter	Planned	Actual	Parameter	Planned	Actual
Instrument	ACIS	ACIS	Obspar format version number	7	7
Detector	ACIS-235678	ACIS-235678	Obspar file type	PREDICTED	ACTUAL
Grating	NONE	NONE	Obspar update status	NONE	UPDATED
Data mode	FAINT	FAINT	Number of optional ACIS chips dropped	0	0
Observation mode	POINTING	POINTING	On-chip summing requested	N	N
[deg] Pointing RA	160.978055	160.9817259355747	Subarray requested	NONE	NONE
[deg] Pointing Dec	11.712821	11.68582469452162	Alternating exposures requested	N	N
[deg] Pointing Roll	246.642348	246.7982290326239	[s] Primary exposure time	0.000000	3.2
[mm] SIM focus pos	-0.684267	-0.6828225247311905			
[mm] SIM defocus	0	0.001444936568705701			
[mm] SIM translation stage pos	-190.132523	-190.1400660498719			
[mm] SIM translation stage offset	0	0.00754346686406393			
[s] Observation start time (MET)	231947113.184000	231946073.12386			
Observation start date	2005-05-08T13:44:09	2005-05-08T13:27:53			
[s] Observation end time (MET)	231987113.184000	231987610.73825			
Observation end date	2005-05-09T00:50:49	2005-05-09T01:00:10			
Read mode	TIMED	TIMED			

2.3 Aspect

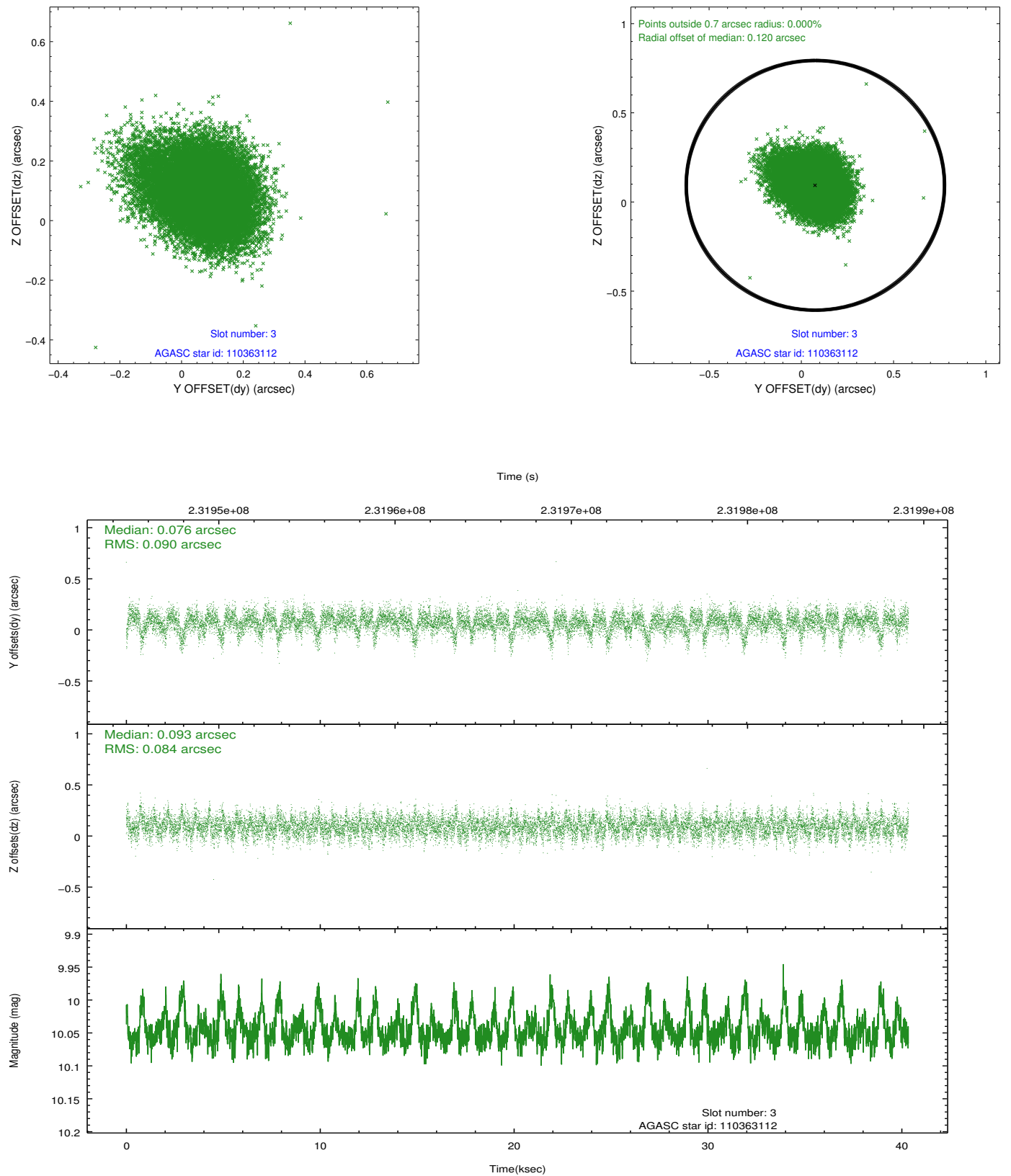


Slot Statistics

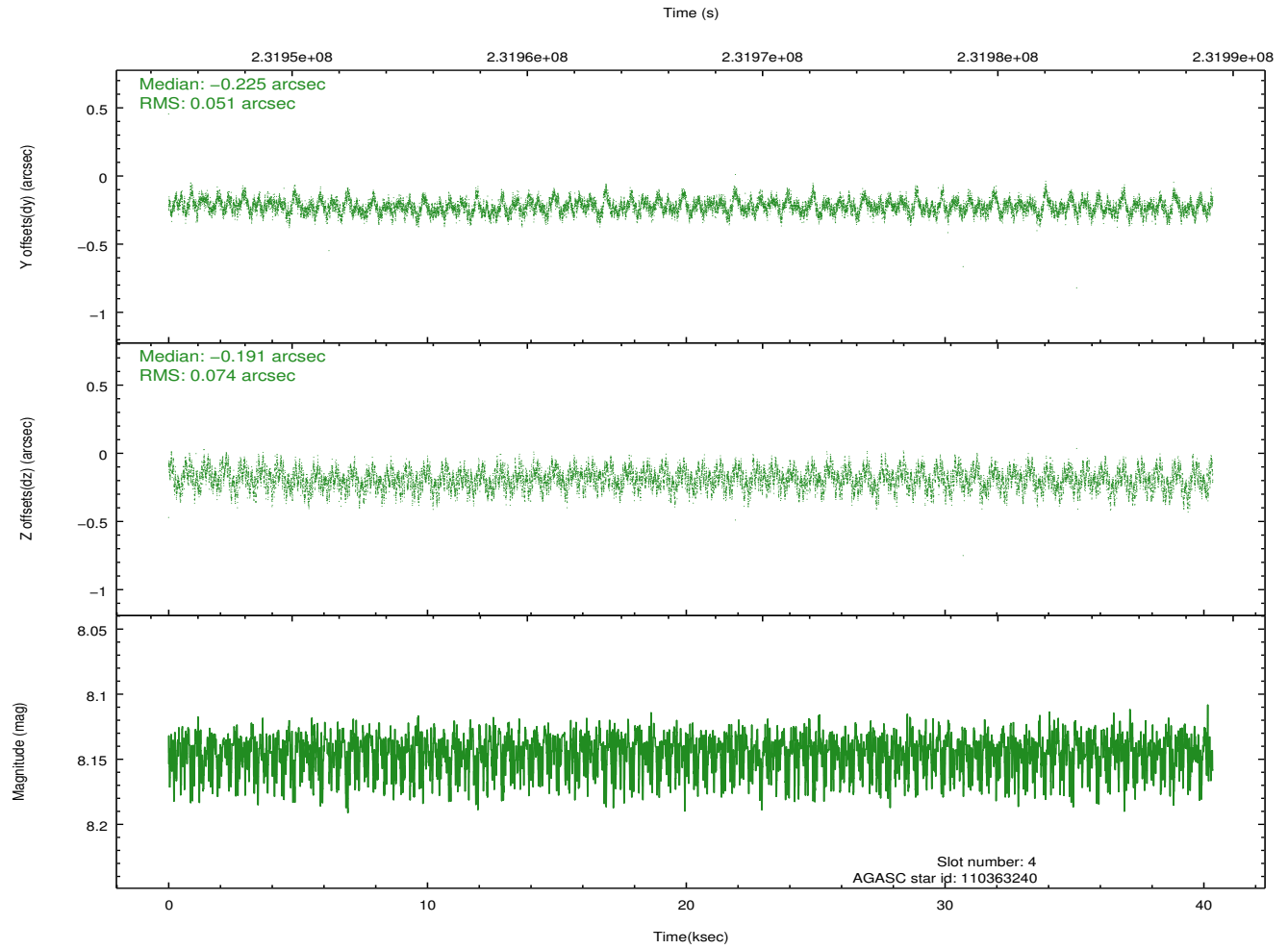
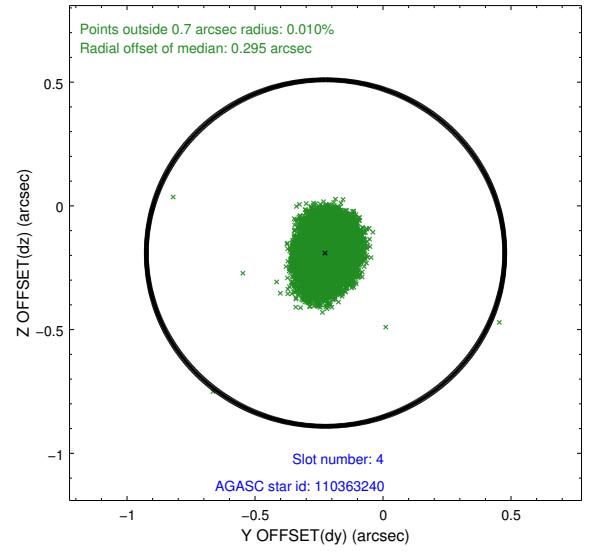
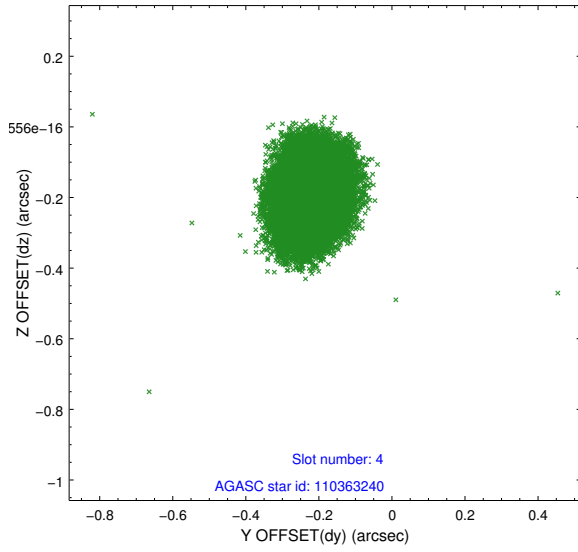
slot	status	id	mag	n_pts	med_dy	med_dz	dr1	dr2	ra	dec	mean_y	mean_z
0	FID	ACIS-S-2	7.10	9842	-0.064	-0.034	0.011	0.024	0.000000	0.000000	-759.11	-1731.01
1	FID	ACIS-S-4	7.21	9841	0.103	0.040	0.011	0.034	0.000000	0.000000	2154.31	177.58
2	FID	ACIS-S-5	7.23	9840	-0.072	0.004	0.010	0.022	0.000000	0.000000	-1811.97	171.17
3	GUIDE	110363112	10.05	19646	0.076	0.093	0.128	0.218	160.492613	11.398369	1717.81	-1124.36
4	GUIDE	110363240	8.14	19681	-0.225	-0.191	0.097	0.153	160.564767	12.418075	-1755.23	-2341.42
5	GUIDE	110365200	9.27	19669	-0.251	-0.180	0.087	0.140	160.778767	12.493533	-2302.43	-1758.11
6	GUIDE	111280632	9.86	19636	0.101	0.221	0.152	0.242	161.089942	11.335611	1090.47	901.16
7	GUIDE	111281680	10.23	19657	0.306	0.060	0.172	0.281	161.020105	11.200959	1633.74	867.02

2.4 Star Slots

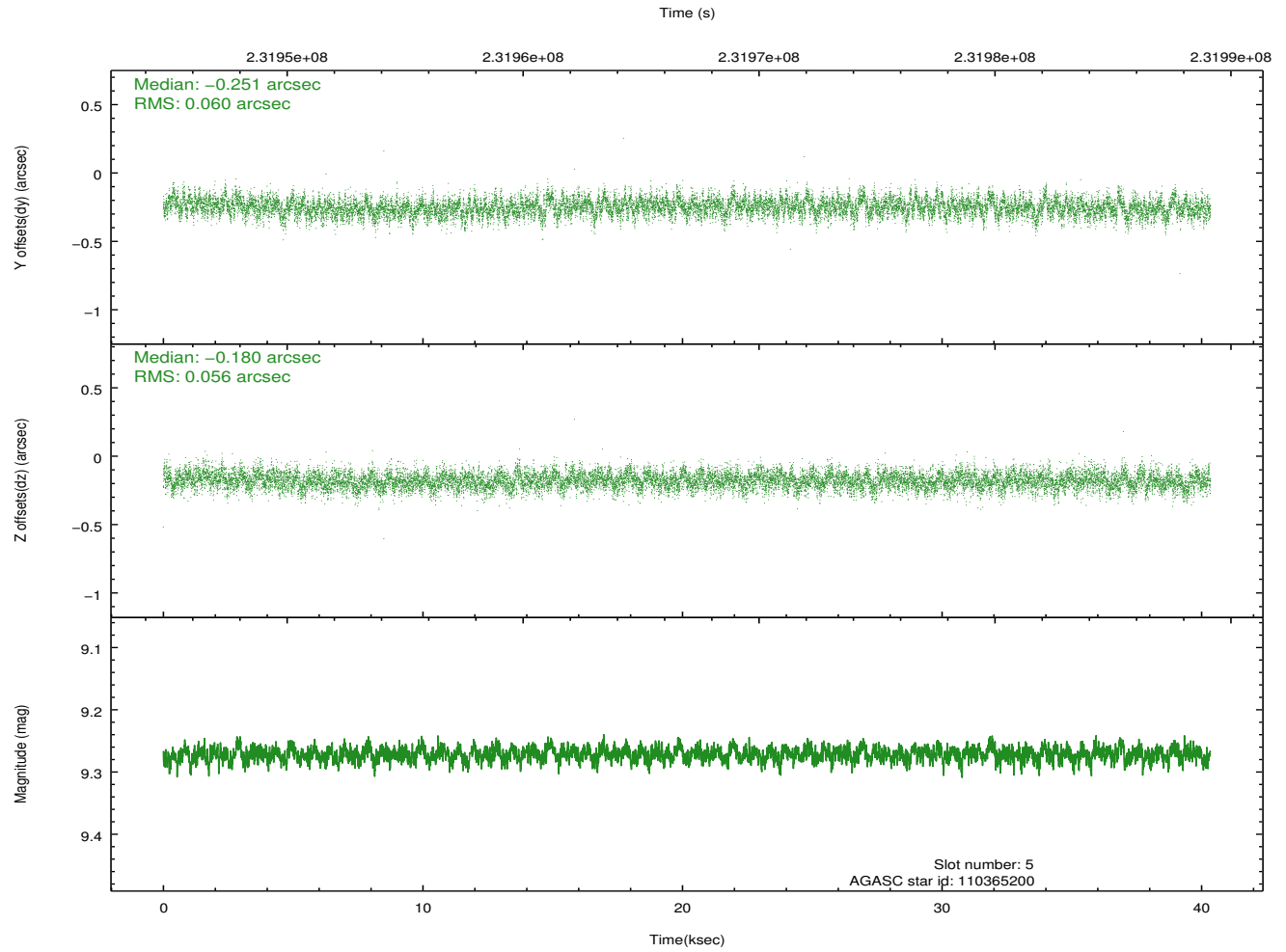
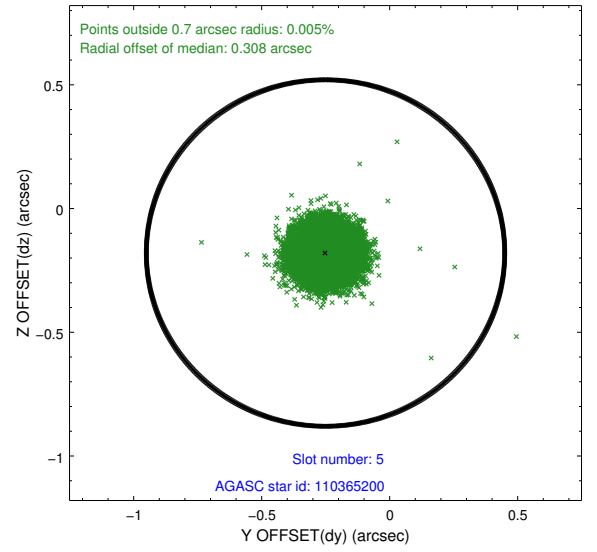
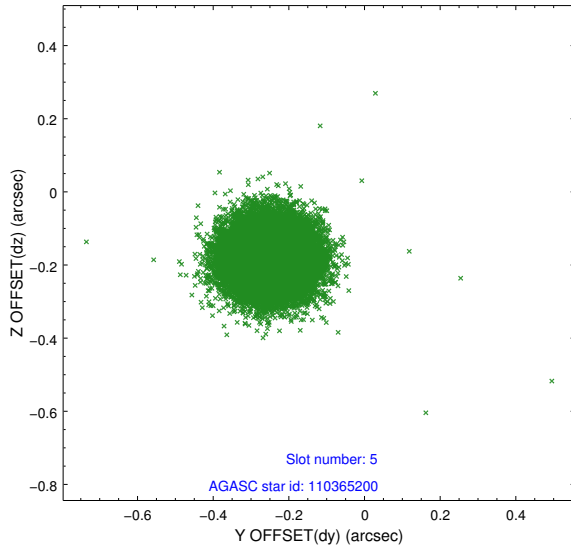
2.4.1 Slot 3



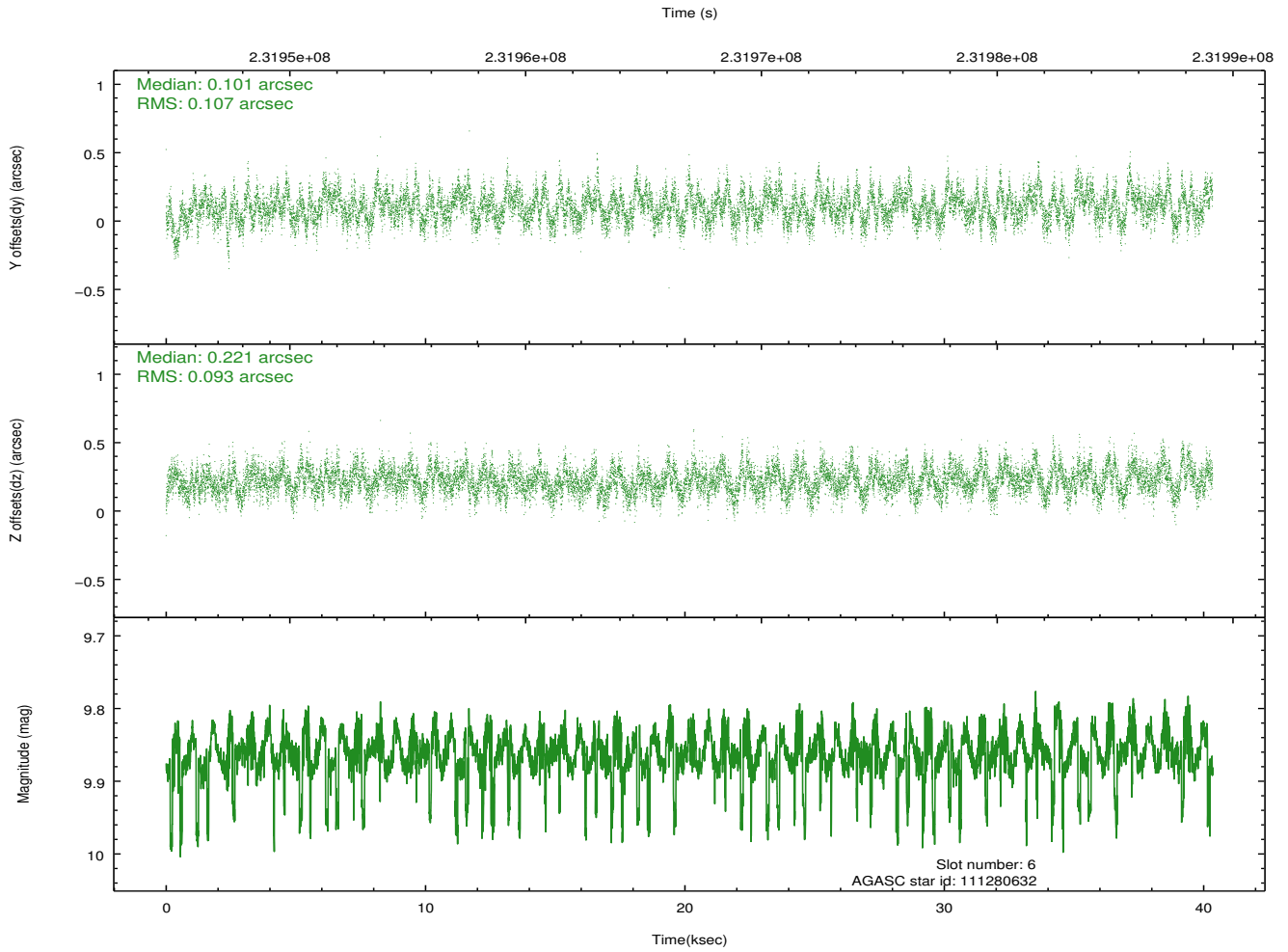
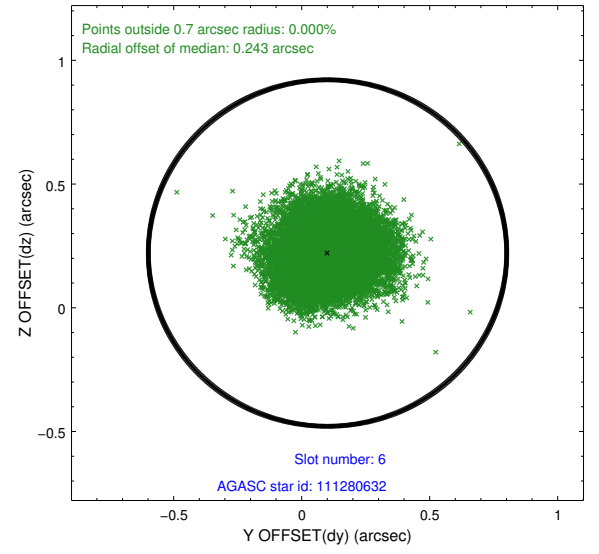
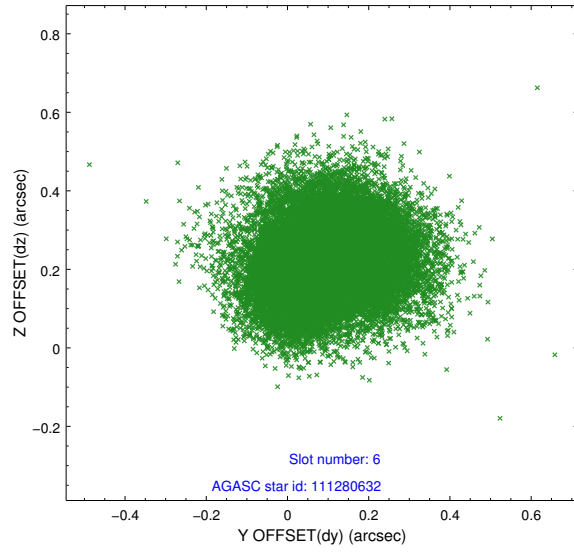
2.4.2 Slot 4



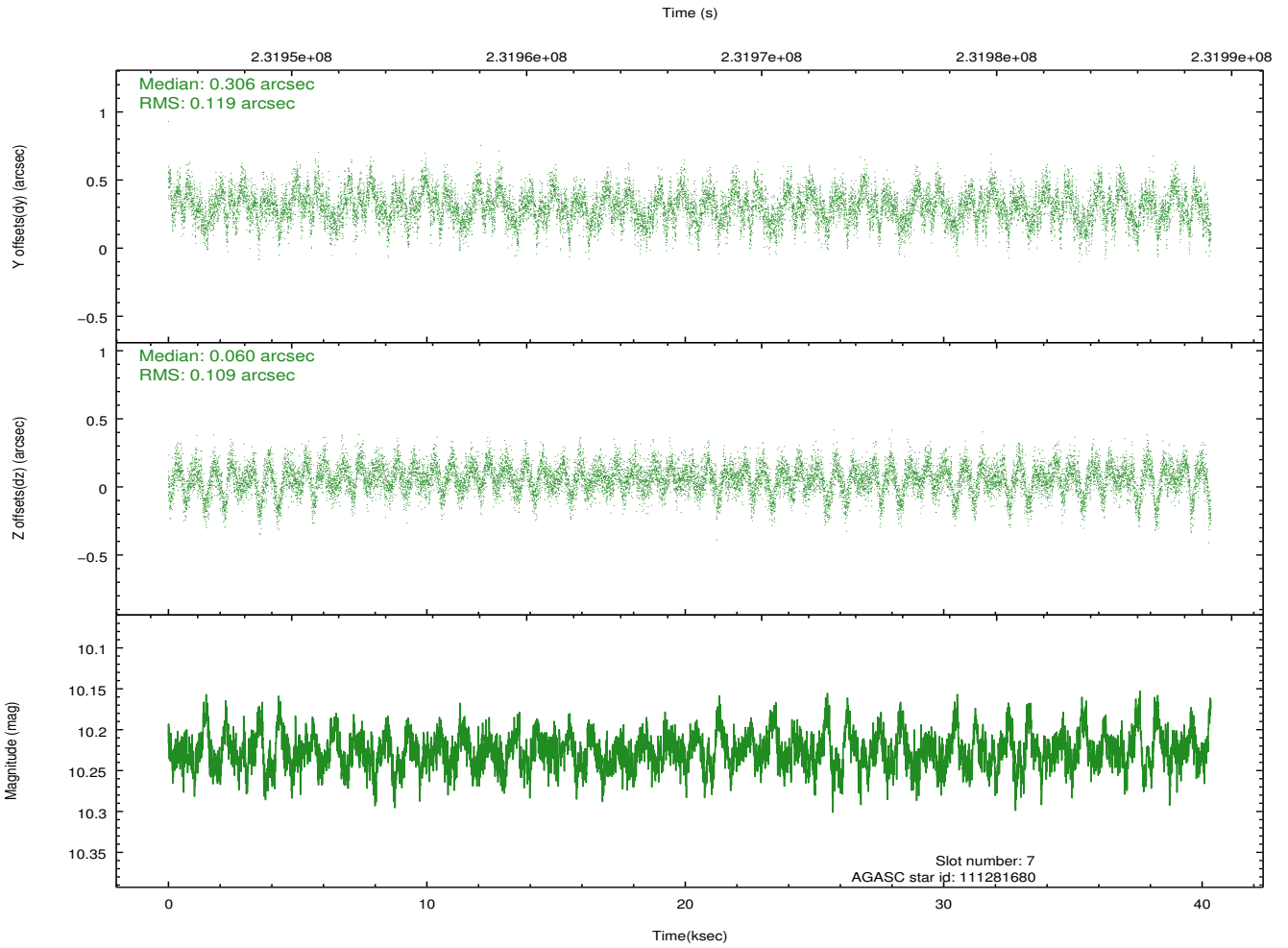
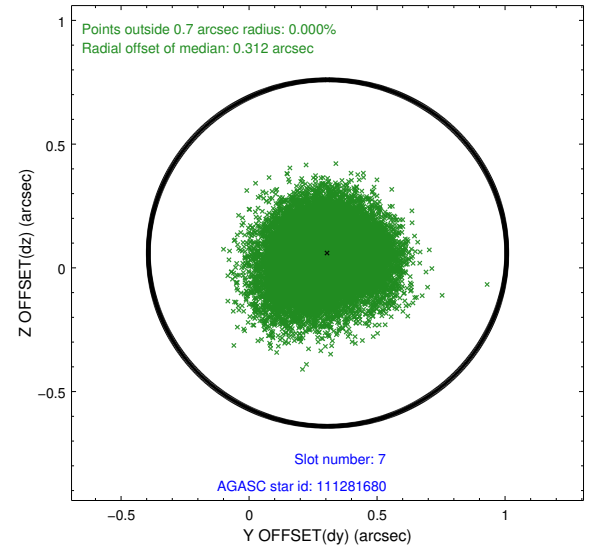
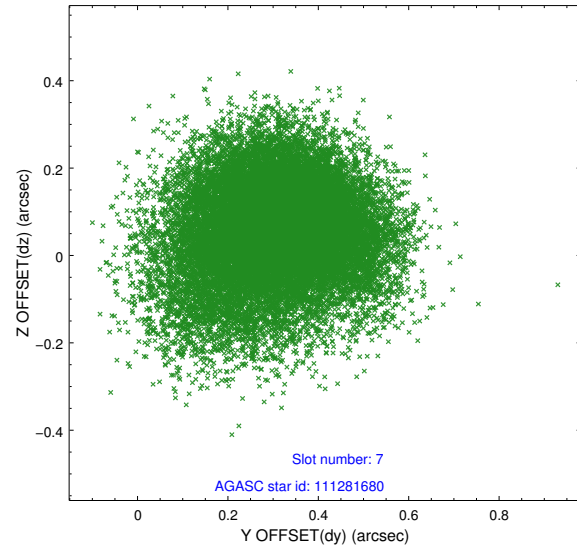
2.4.3 Slot 5



2.4.4 Slot 6

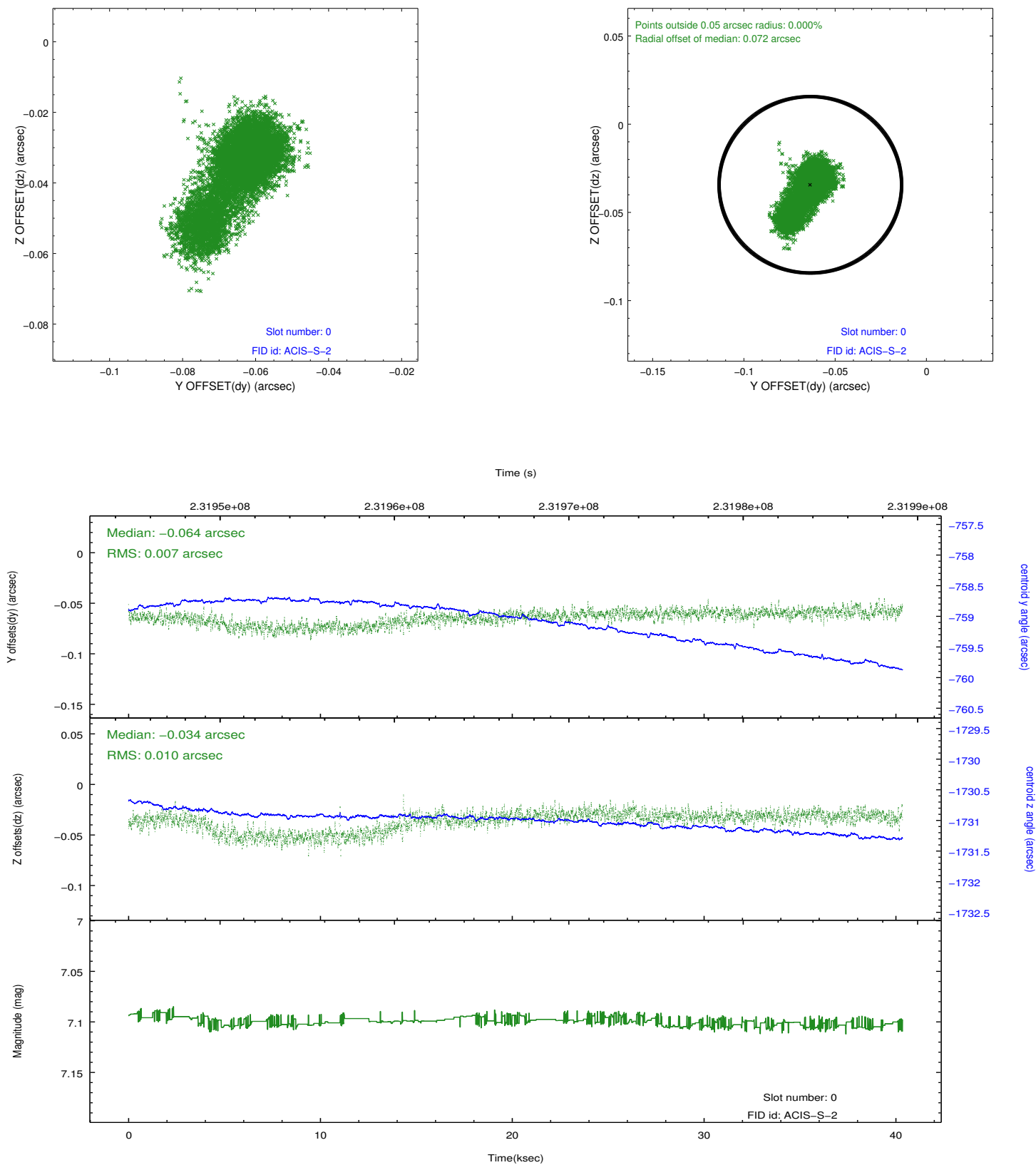


2.4.5 Slot 7

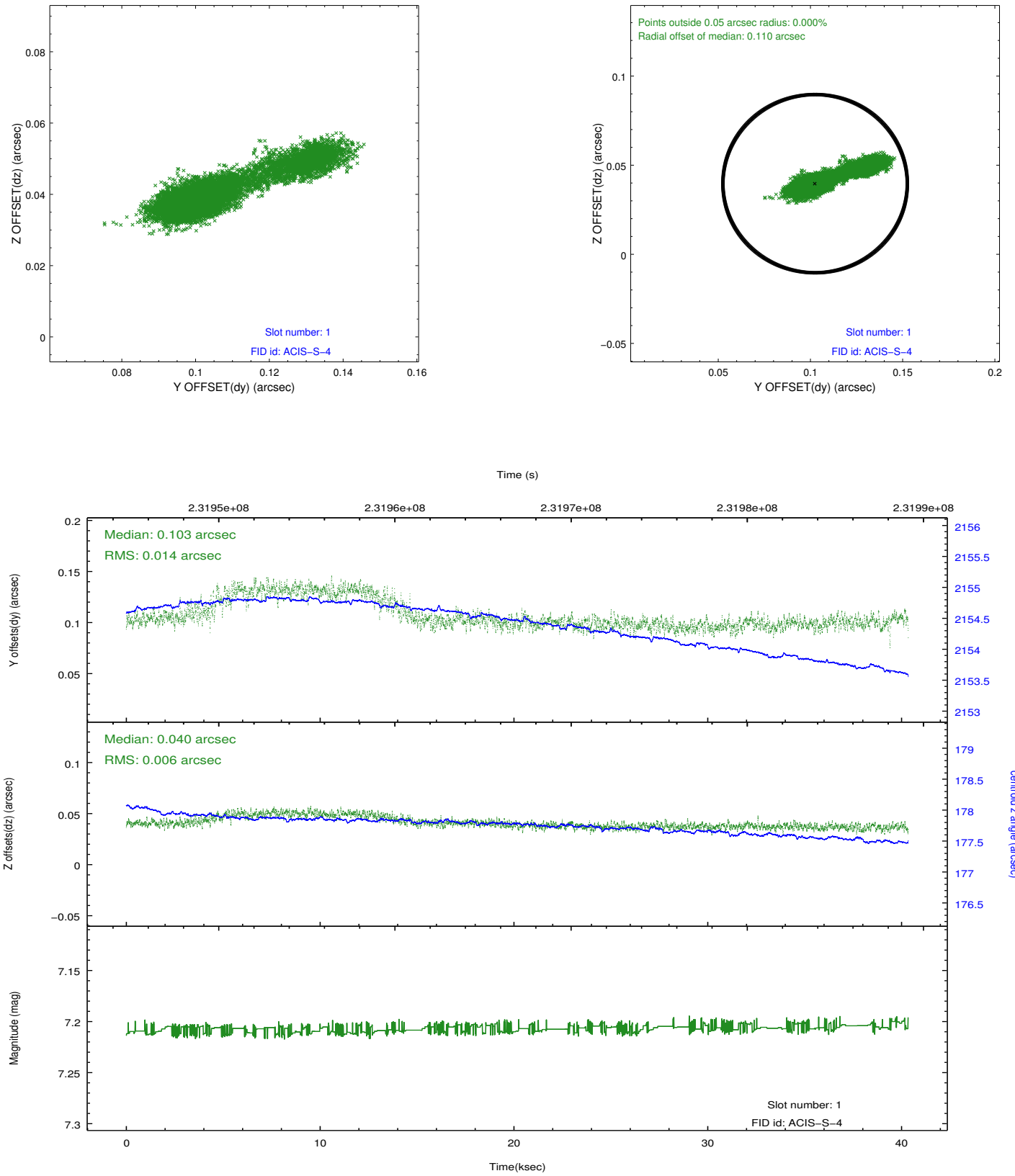


2.5 FID Slots

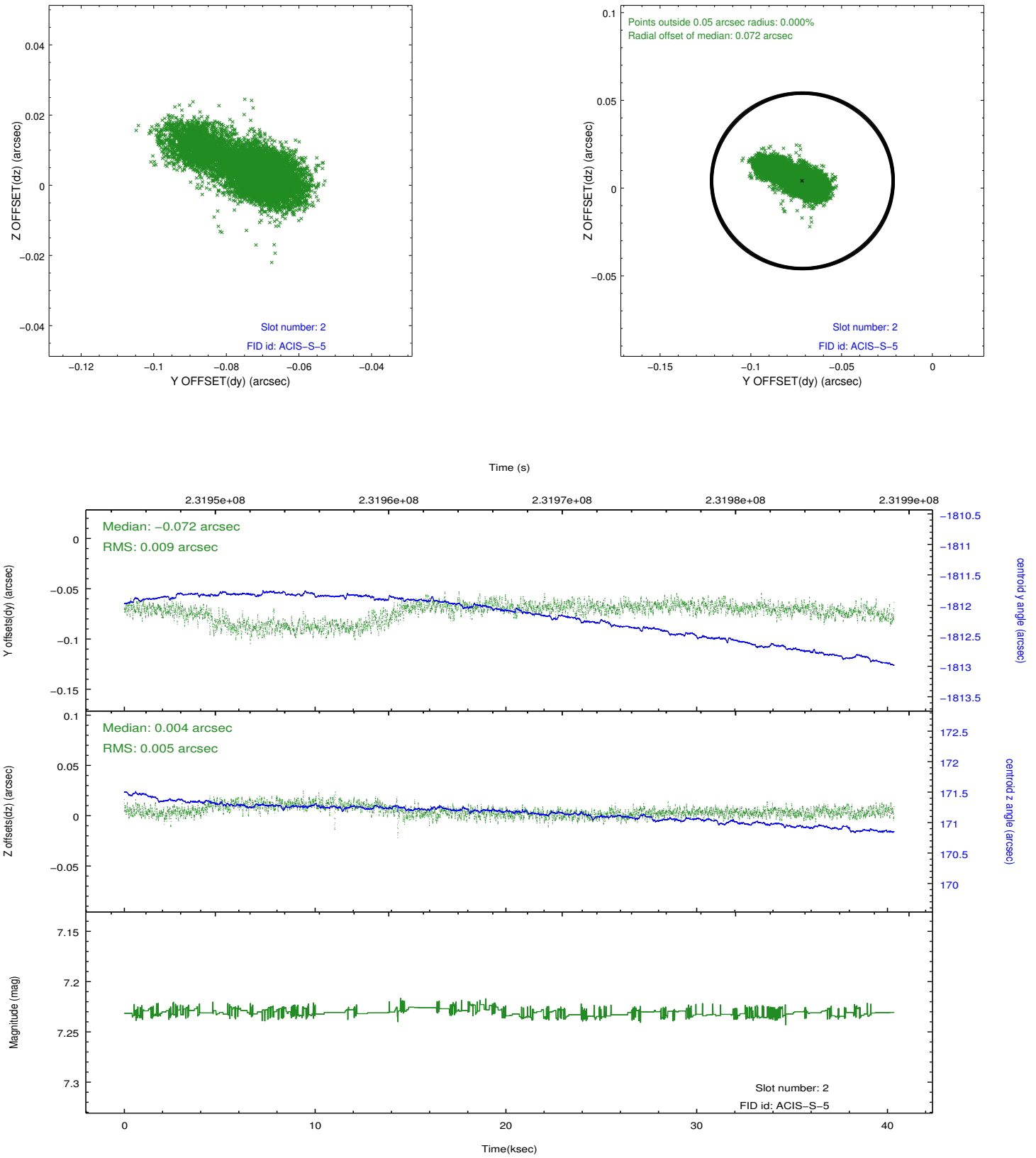
2.5.1 Slot 0



2.5.2 Slot 1



2.5.3 Slot 2



A Summary

A.1 Status

V&V Scientist	Jen Lauer
V&V Date (YYYY-MM-DD)	2013.01.16
V&V Edition	1
V&V Disposition and Status	OK
V&V Charge Time	39.95519

A.2 Comments