

# V&V Reference Report

## L2 ASCDS Version : 8.4.3

Observation 5544 - L2 Version 4  
Chandra X-Ray Center

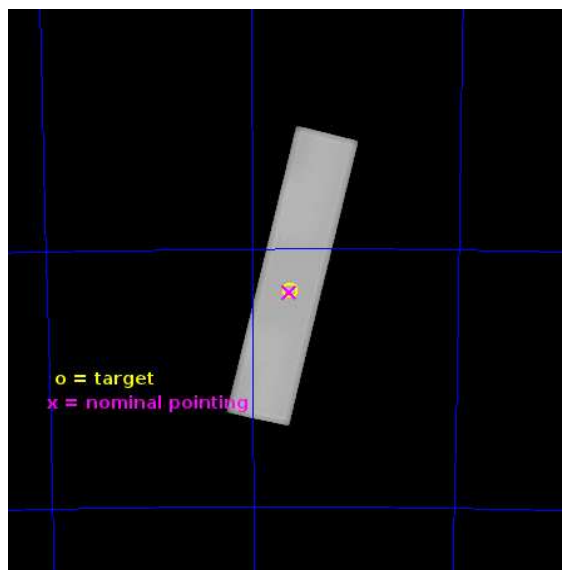
L2 Processing Date : Jun 28 2013

## Contents

<b>1</b>	<b>Front</b>	<b>2</b>
<b>2</b>	<b>OBI</b>	<b>3</b>
2.1	OBI . . . . .	3
2.1.1	Images . . . . .	3
2.1.2	Parameters . . . . .	4
2.1.3	Events . . . . .	4
2.2	Compared Parameters . . . . .	5
2.3	Aspect . . . . .	6
2.4	Star Slots . . . . .	9
2.4.1	Slot 3 . . . . .	9
2.4.2	Slot 4 . . . . .	10
2.4.3	Slot 5 . . . . .	11
2.4.4	Slot 6 . . . . .	12
2.4.5	Slot 7 . . . . .	13
2.5	FID Slots . . . . .	14
2.5.1	Slot 0 . . . . .	14
2.5.2	Slot 1 . . . . .	15
2.5.3	Slot 2 . . . . .	16
<b>A</b>	<b>Summary</b>	<b>17</b>
A.1	Status . . . . .	17
A.2	Comments . . . . .	17

# 1 Front

seq_num	500535	Sequence number
obs_id	5544	Observation id
title	Search for Sub-Millisecond Pulsars in 47 Tuc	Proposal title
observer	Prof. Robert Rutledge	Principal investigator
object	47 Tuc	Source name
ra_targ	6.021667	Observer's specified target RA [deg]
dec_targ	-72.080528	Observer's specified target Dec [deg]
ra_nom	6.0247591009276	Nominal RA [deg]
dec_nom	-72.085103543075	Nominal Dec [deg]
roll_nom	283.14519994053	Nominal Roll [deg]
revision	4	Processing version of data
ontime	50140.183570951	[s]
livetime	49829.004092301	Ontime multiplied by DTCOR
l2events	2972842	Number of level 2 events

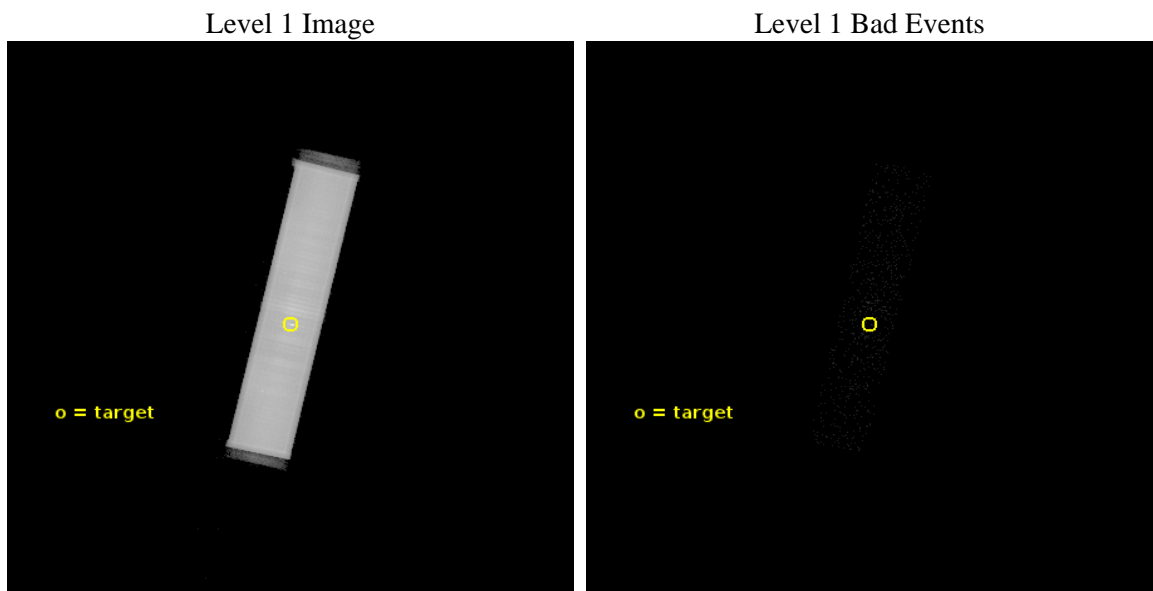




## 2 OBI

### 2.1 OBI

#### 2.1.1 Images



### 2.1.2 Parameters

obi_num	0	Obi number	sched_exp_time	50000.000000	[s] Scheduled observation exposure time
ascdsver	10	Processing system revision	ontime	50140.183570951	[s]
caldsver	4.5.7	&#160	l1events	3954359	Number of level 1 events
date	2013-06-29T02:26:41	Date and time of file creation			
revision	4	Processing version of data			

### 2.1.3 Events

Level 1 Events

	segment 1	segment 2	segment 3
level 1 events	3810	3950537	12
rejected events	76	63110	7
rejected %	1%	1%	58%

## 2.2 Compared Parameters

Parameter	Planned	Actual
Instrument	HRC	HRC
Detector	HRC-S	HRC-S
Grating	NONE	NONE
Data mode	OBSERVING	OBSERVING
Observation mode	POINTING	POINTING
[deg] Pointing RA	5.957889	6.024759100927611
[deg] Pointing Dec	-72.065231	-72.08510354307494
[deg] Pointing Roll	283.014247	283.1451999405329
[mm] SIM focus pos	-1.533336	-1.526339935833849
[mm] SIM defocus	7.710433287538843e-07	0.006996703570447904
[mm] SIM translation stage pos	250.455976	250.466033080201
[mm] SIM translation stage offset	0	-0.01005468664627074
[s] Observation start time (MET)	251595915.184000	251594783.85085
Observation start date	2005-12-21T23:44:11	2005-12-21T23:26:23
[s] Observation end time (MET)	251645915.184000	251646920.47826
Observation end date	2005-12-22T13:37:31	2005-12-22T13:55:20

Parameter	Planned	Actual
Obspar format version number	7	7
Obspar file type	PREDICTED	ACTUAL
Obspar update status	NONE	UPDATED

## 2.3 Aspect

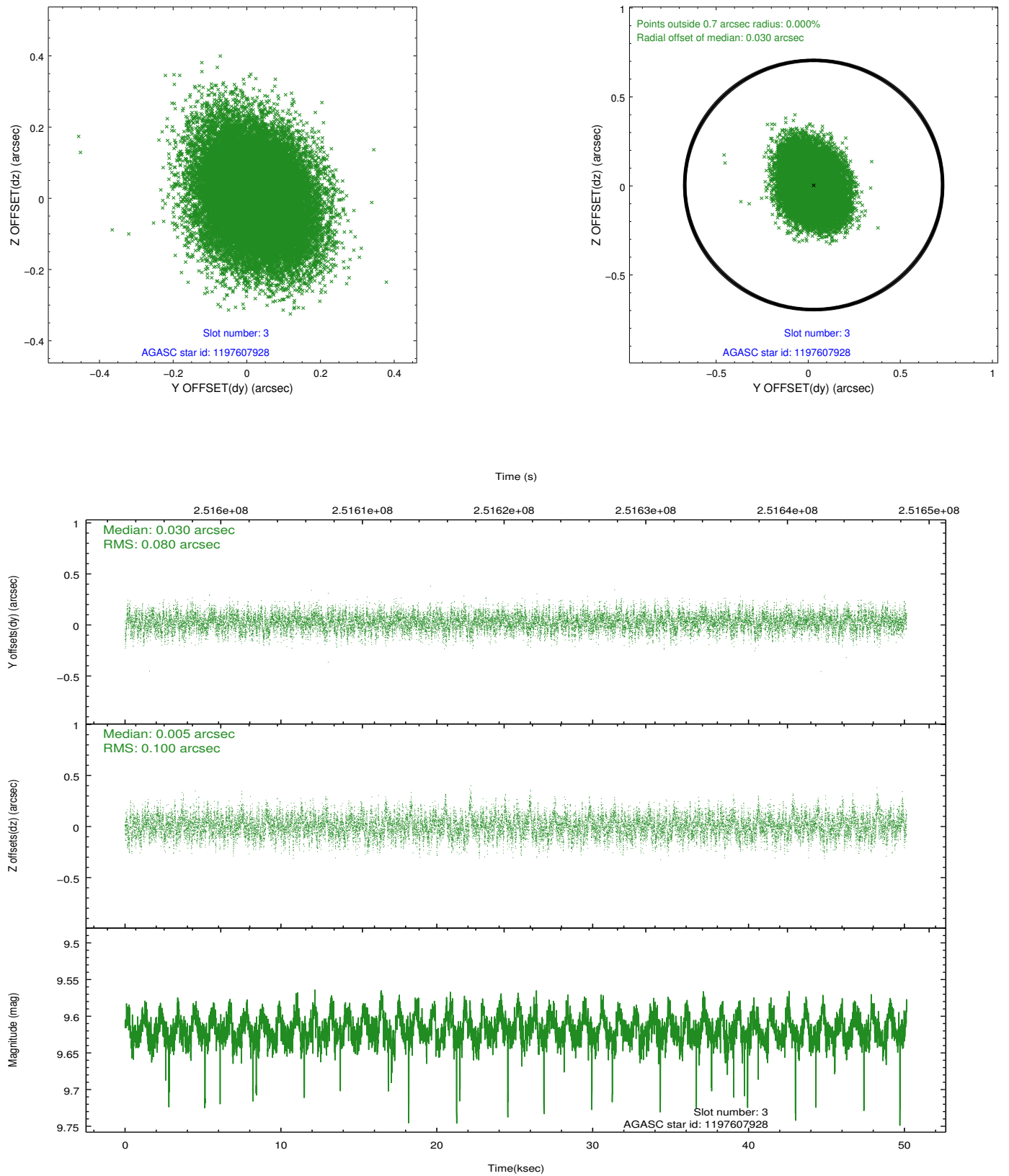


### Slot Statistics

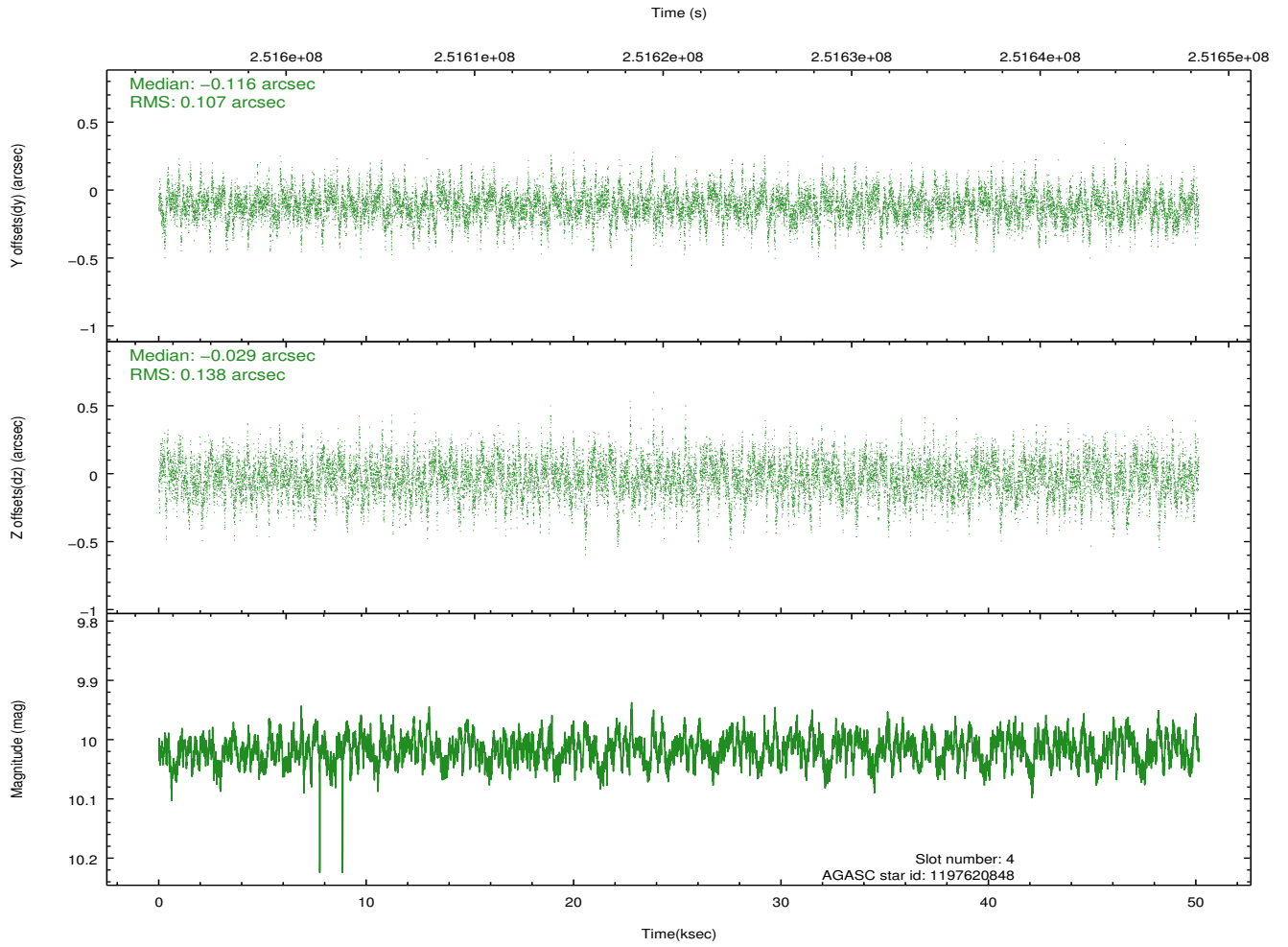
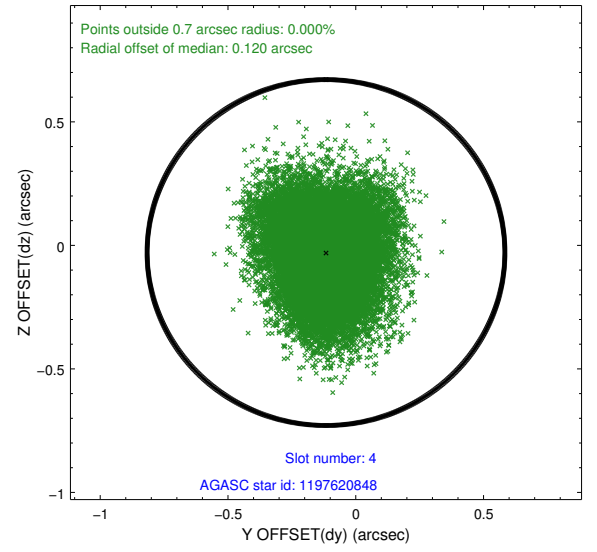
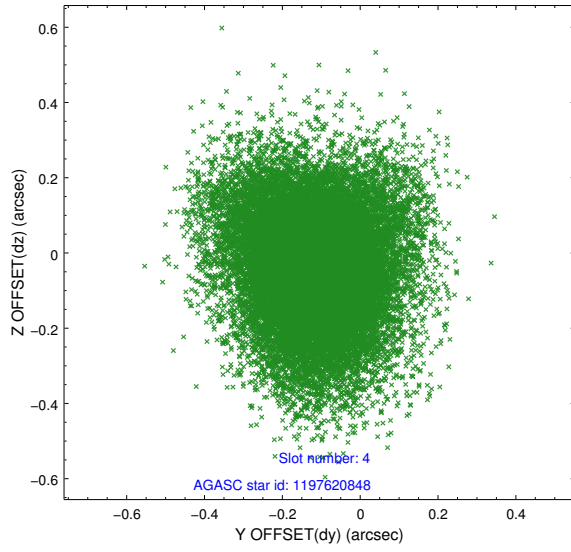
slot	status	id	mag	n_pts	med_dy	med_dz	dr1	dr2	ra	dec	mean_y	mean_z
0	FID	HRC-S-1	7.01	12229	0.147	-0.178	0.017	0.028	0.000000	0.000000	-1162.58	-459.09
1	FID	HRC-S-2	7.01	12229	0.140	-0.112	0.008	0.013	0.000000	0.000000	1236.98	-451.73
2	FID	HRC-S-3	7.02	12229	0.102	-0.012	0.020	0.032	0.000000	0.000000	-1165.24	570.55
3	GUIDE	1197607928	9.62	24445	0.030	0.005	0.136	0.222	7.837743	-72.165759	851.01	1930.48
4	GUIDE	1197620848	10.02	24429	-0.116	-0.029	0.182	0.315	3.913465	-71.739620	-1622.85	-1991.68
5	BAD	1197635184	8.92	189	-50.822	14.229	7.042	13.345	6.018453	-72.095535	72.45	43.05
6	GUIDE	1197621088	9.94	24352	-0.039	-0.019	0.159	0.260	3.823480	-72.180366	-84.10	-2392.32
7	GUIDE	1198000776	9.89	24430	0.131	0.048	0.170	0.275	4.972441	-72.805451	2369.32	-1623.77

## 2.4 Star Slots

### 2.4.1 Slot 3

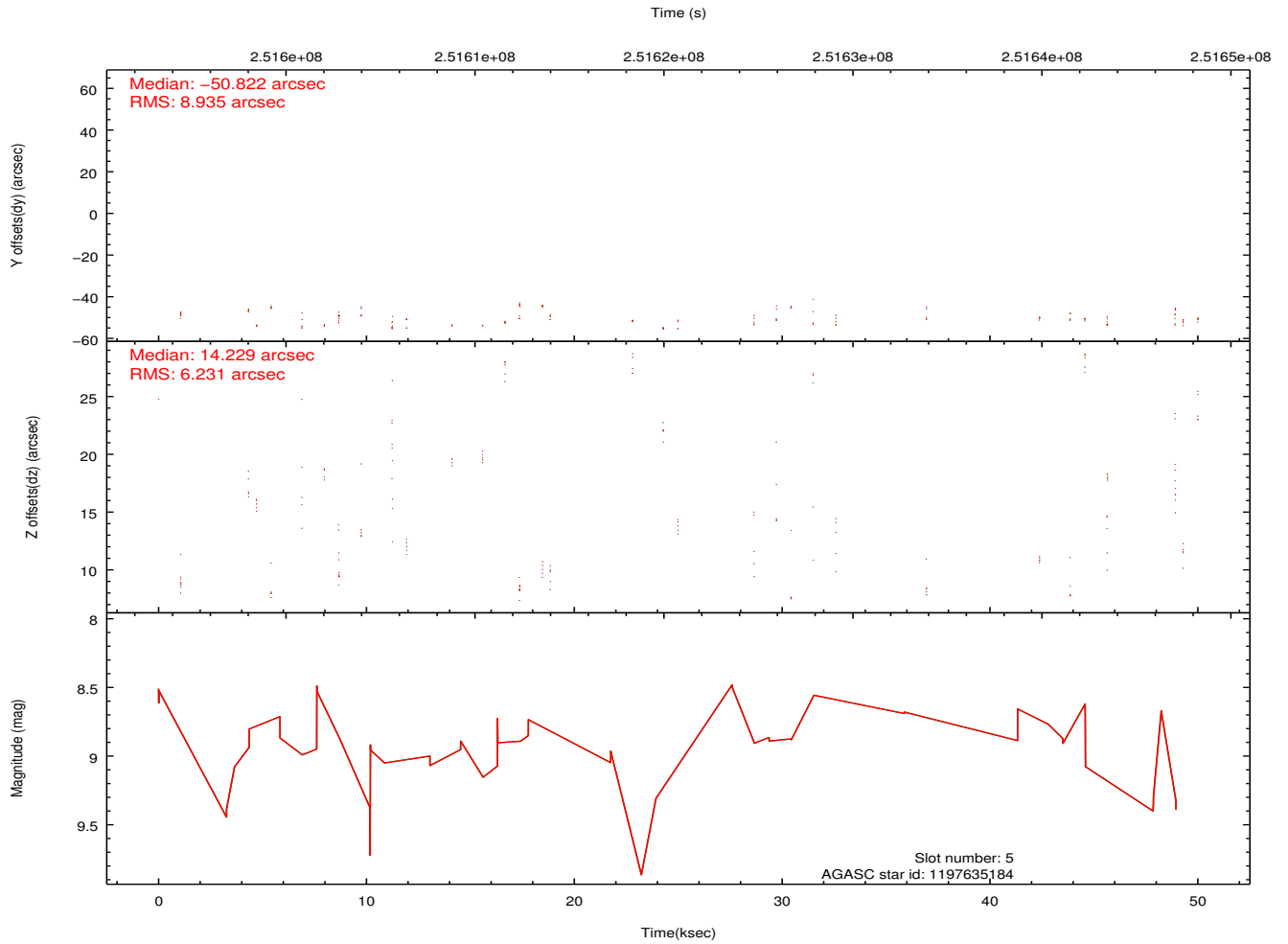
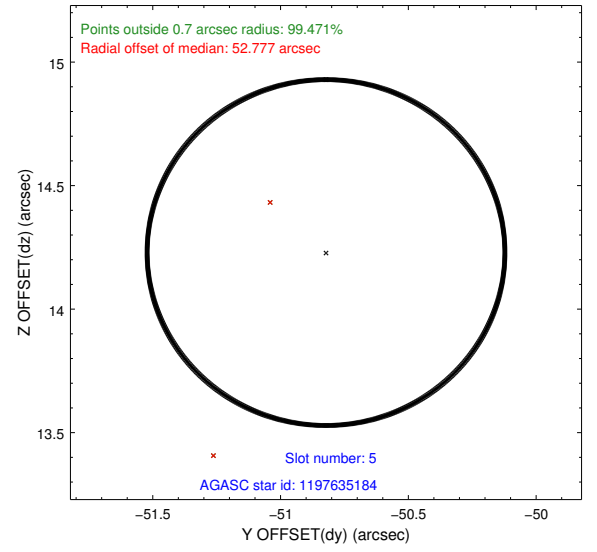
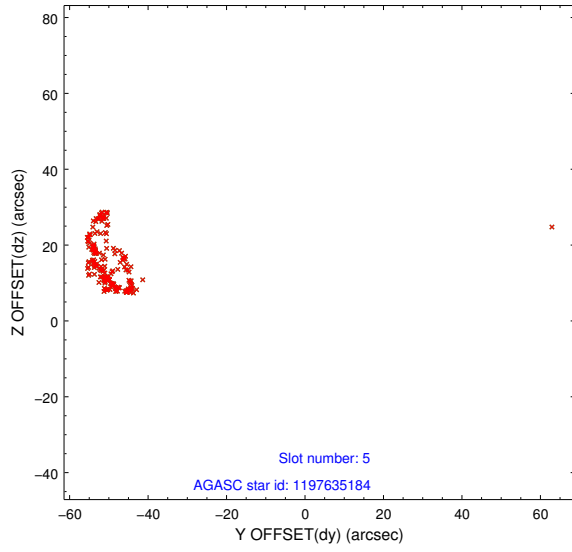


## 2.4.2 Slot 4

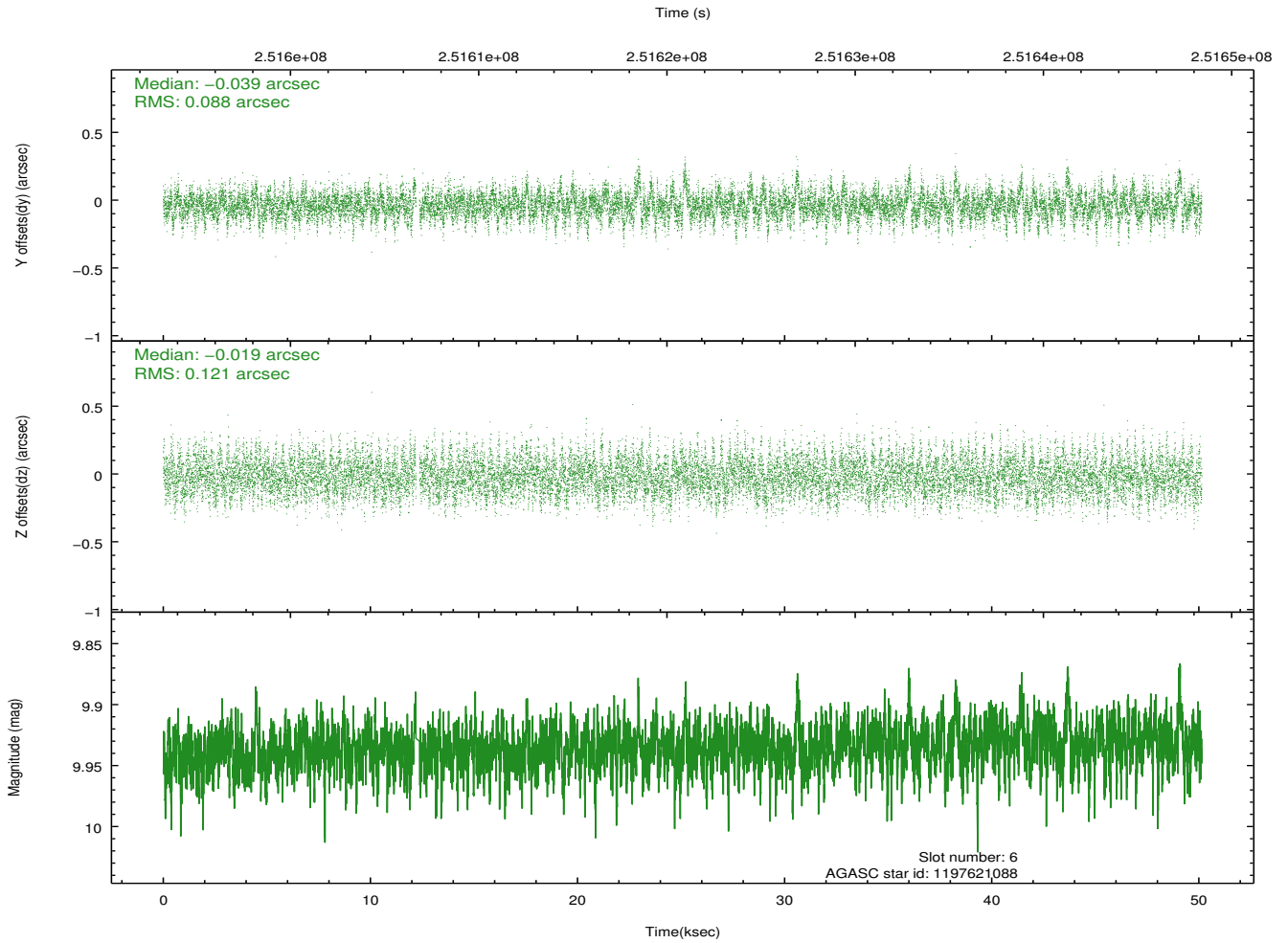
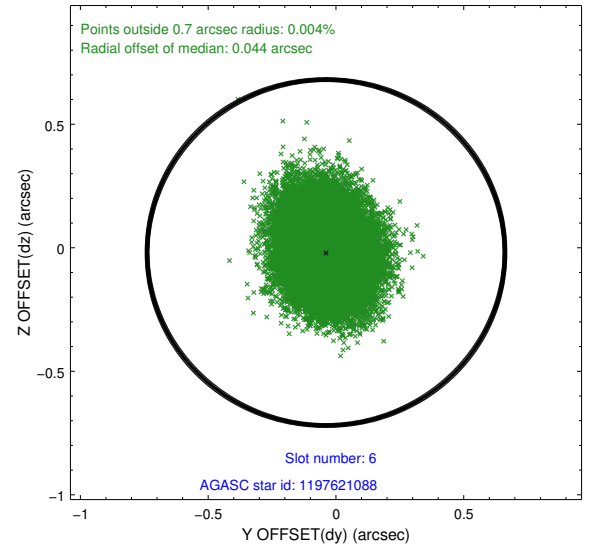
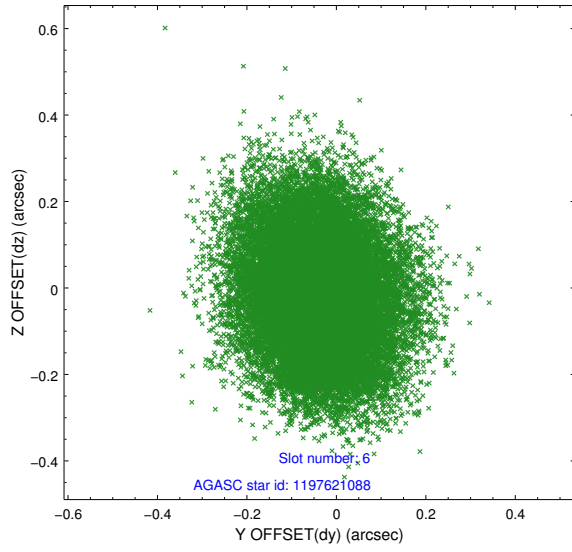




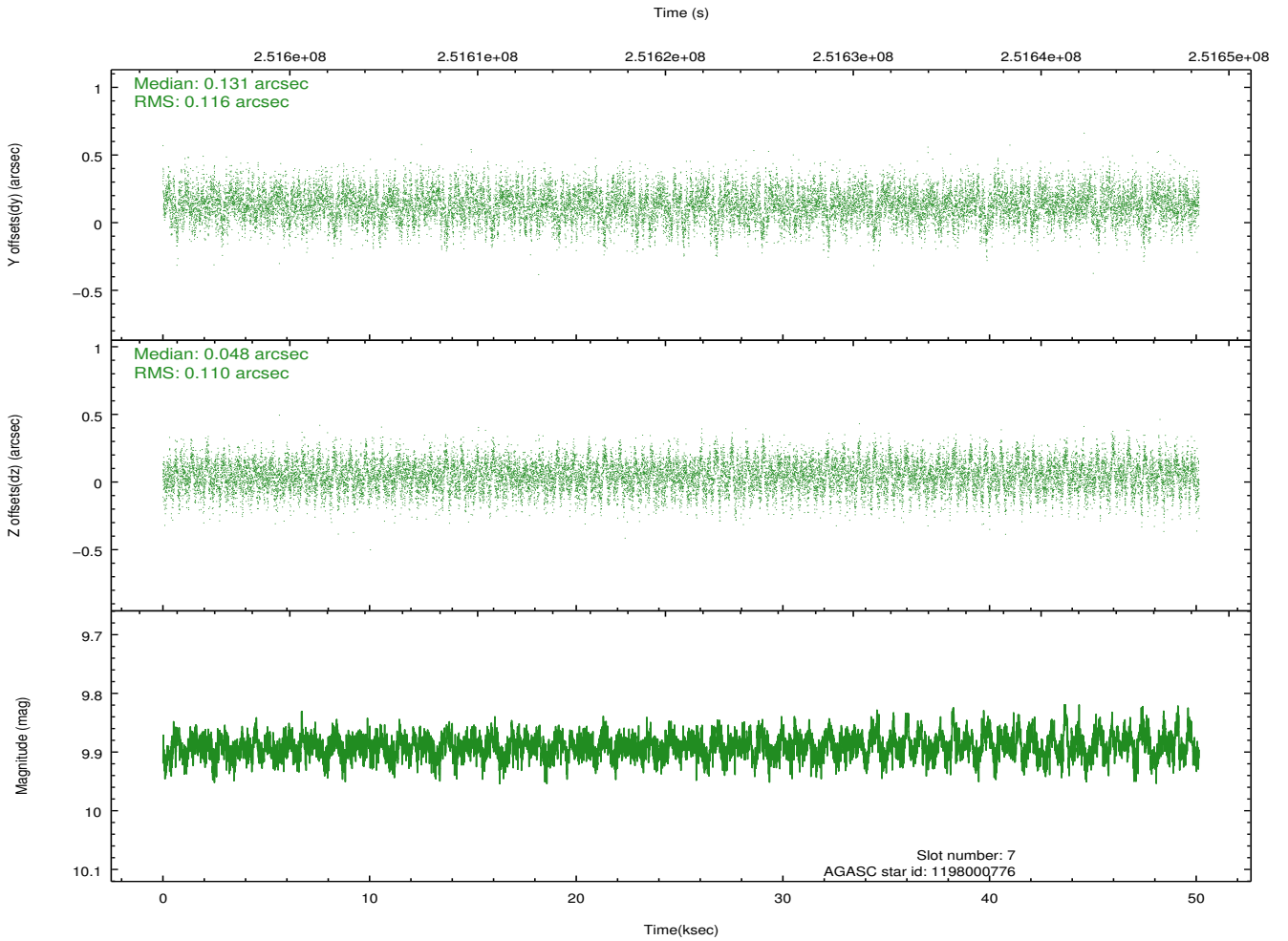
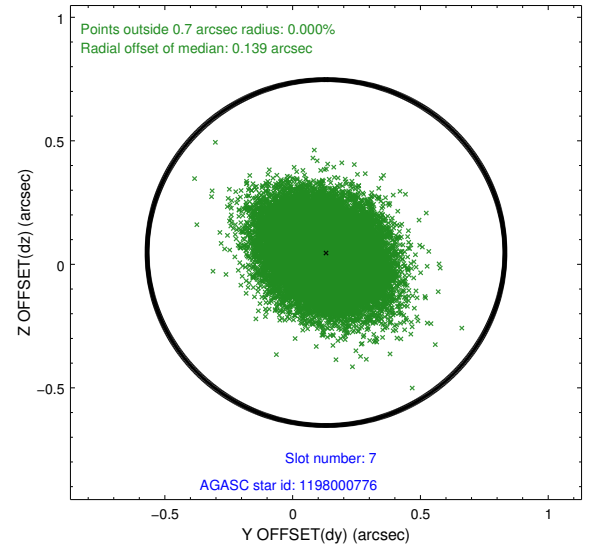
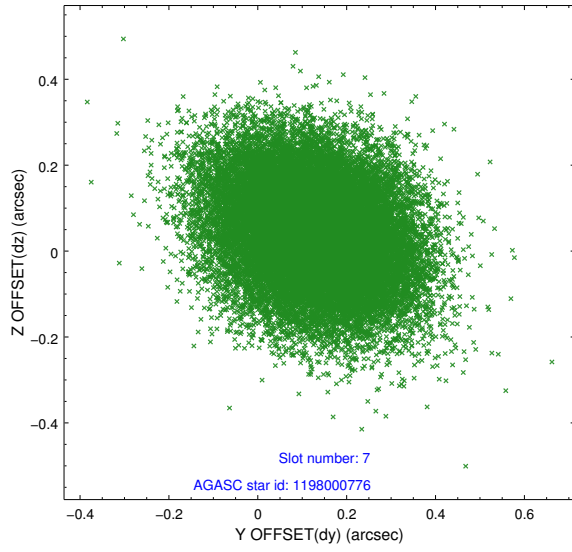
### 2.4.3 Slot 5



## 2.4.4 Slot 6

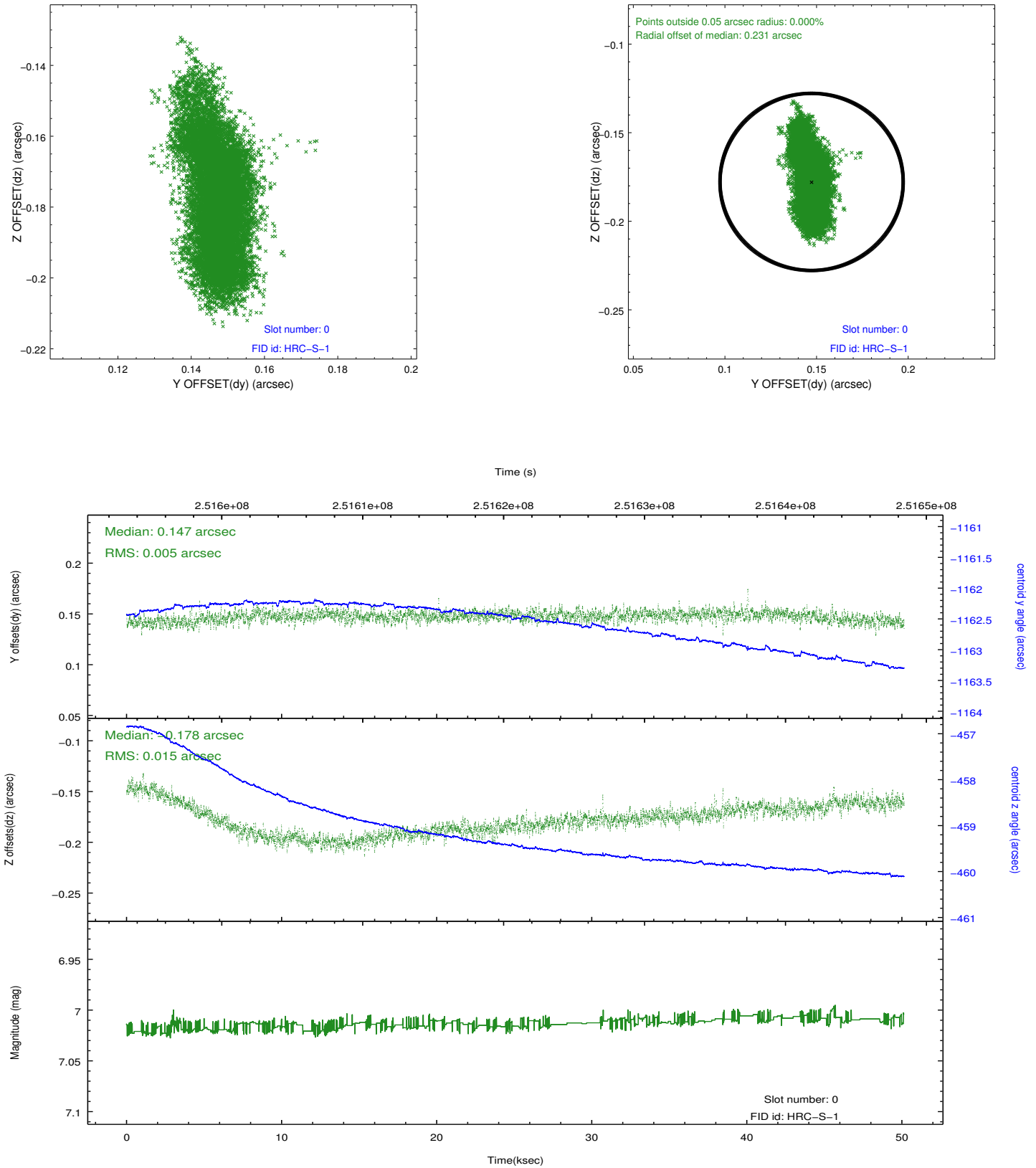


## 2.4.5 Slot 7

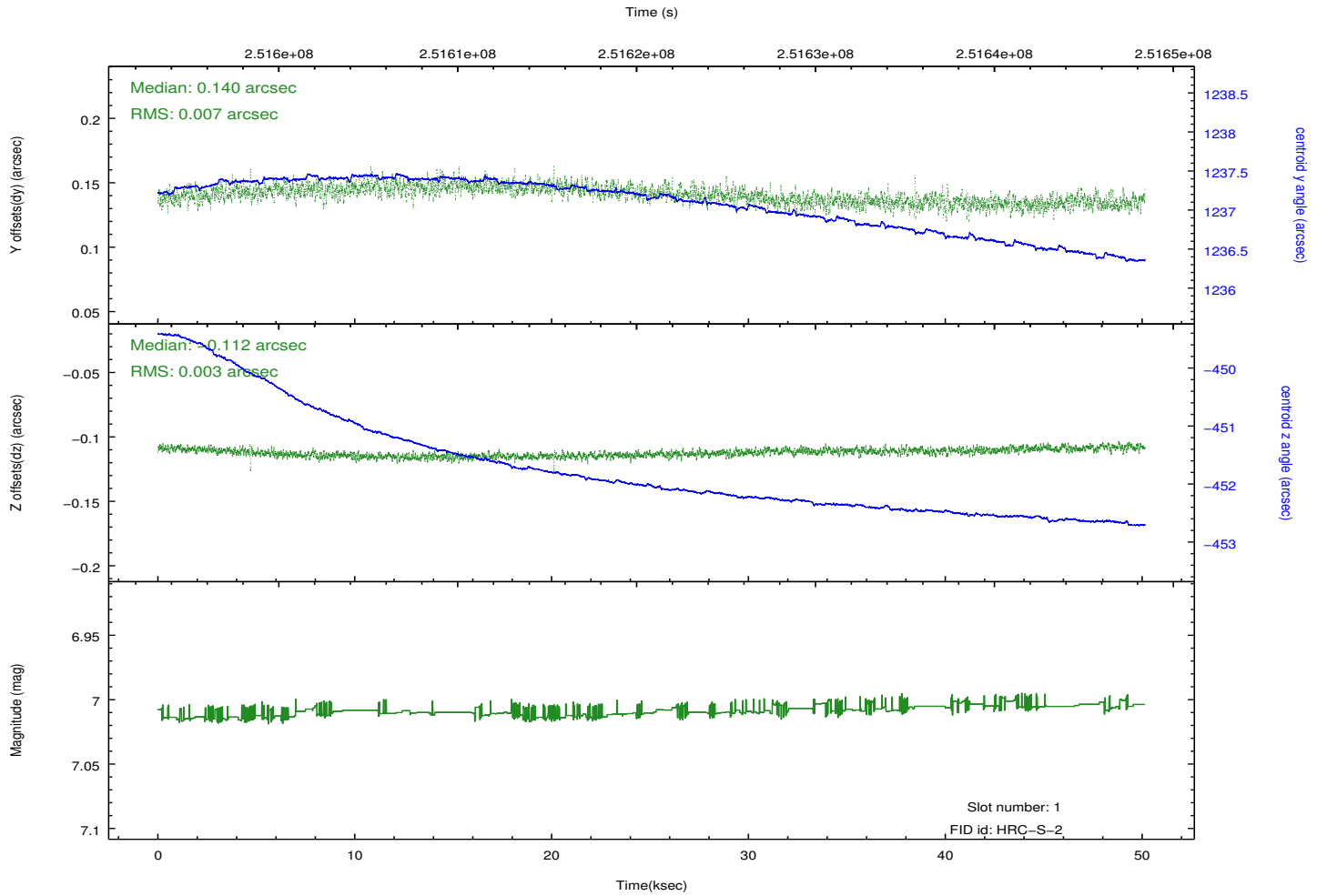
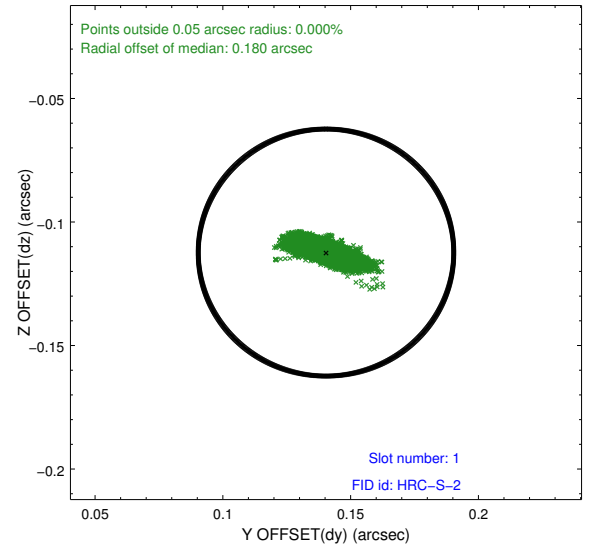
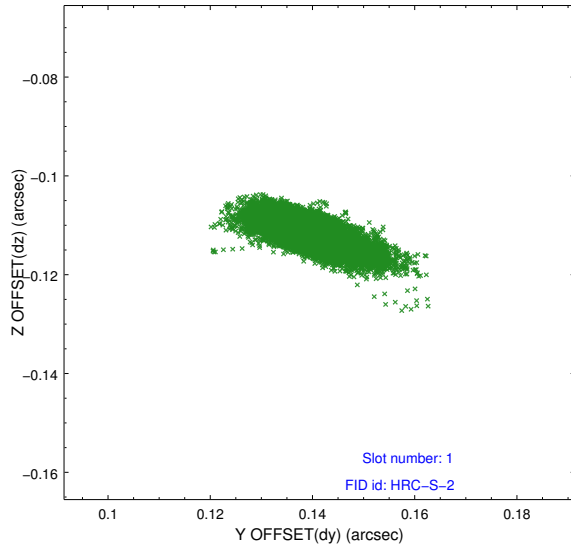


## 2.5 FID Slots

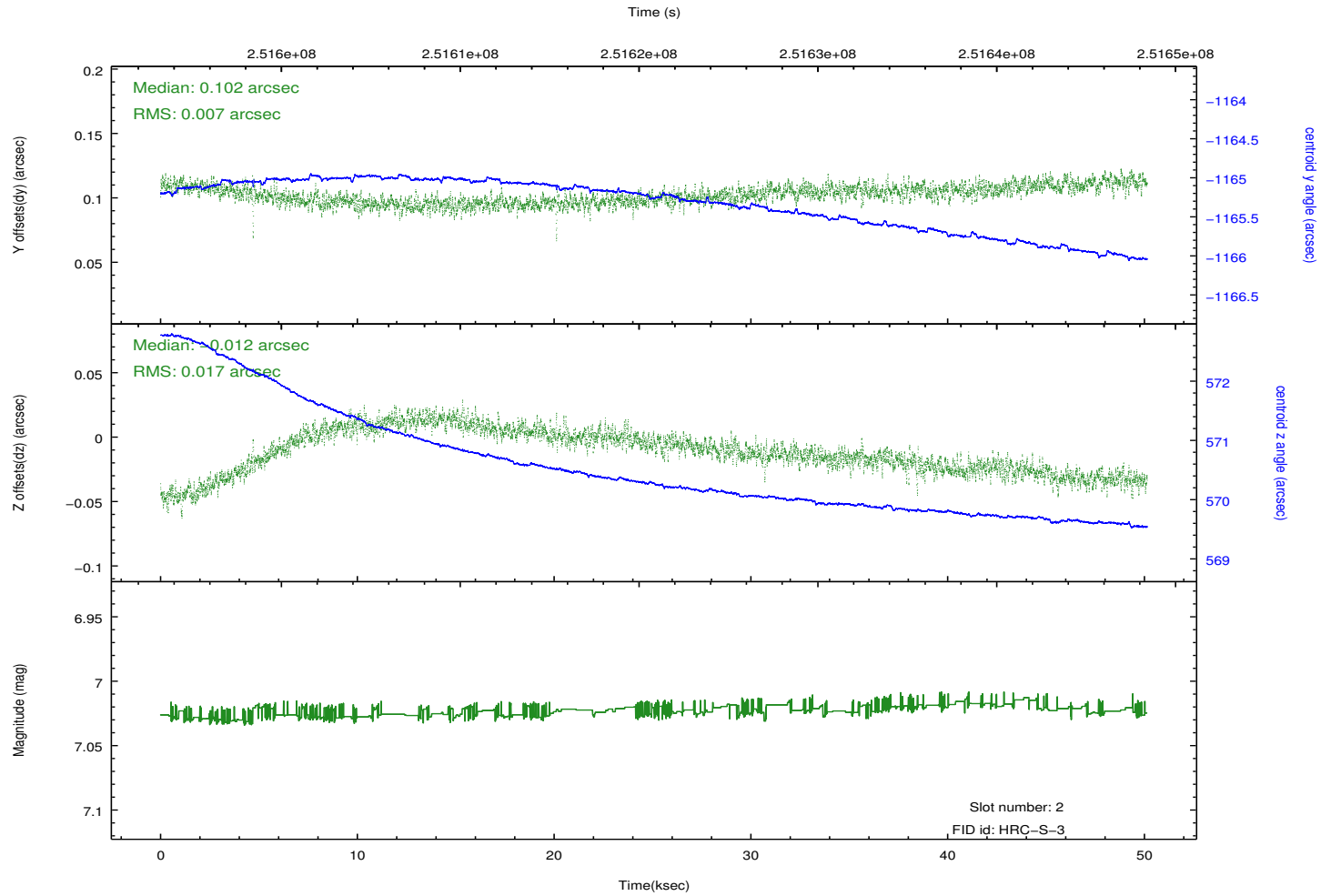
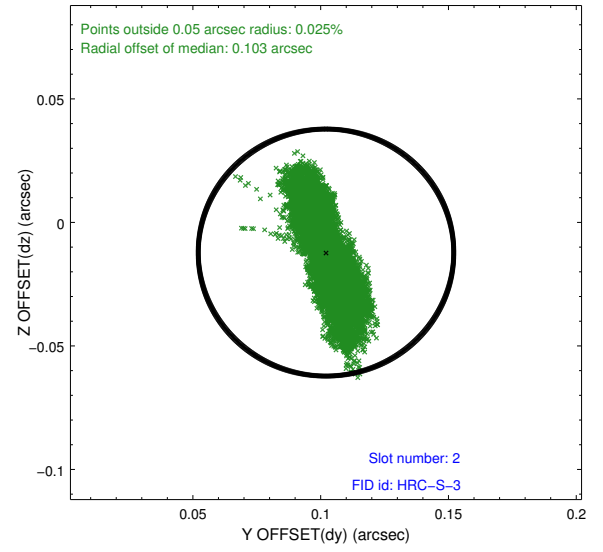
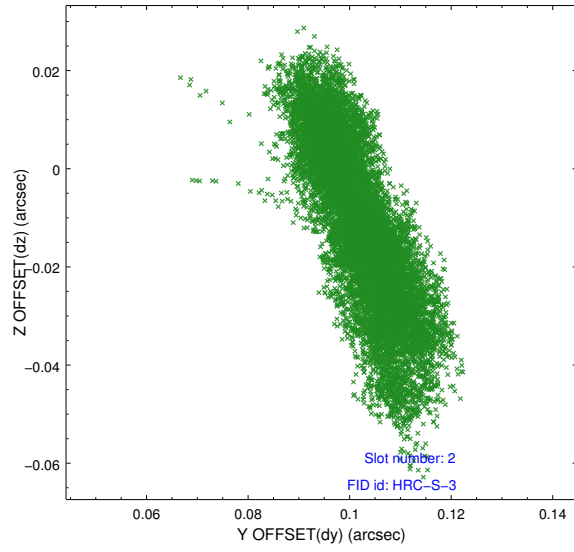
### 2.5.1 Slot 0



## 2.5.2 Slot 1



### 2.5.3 Slot 2



## A Summary

### A.1 Status

V&V Scientist	Beth Sundheim
V&V Date (YYYY-MM-DD)	2013.07.05
V&V Edition	1
V&V Disposition and Status	OK
V&V Charge Time	50.14018

### A.2 Comments