

# V&V Reference Report

## L2 ASCDS Version : 7.6.7.1

Observation 6344 - L2 Version 002  
Chandra X-Ray Center

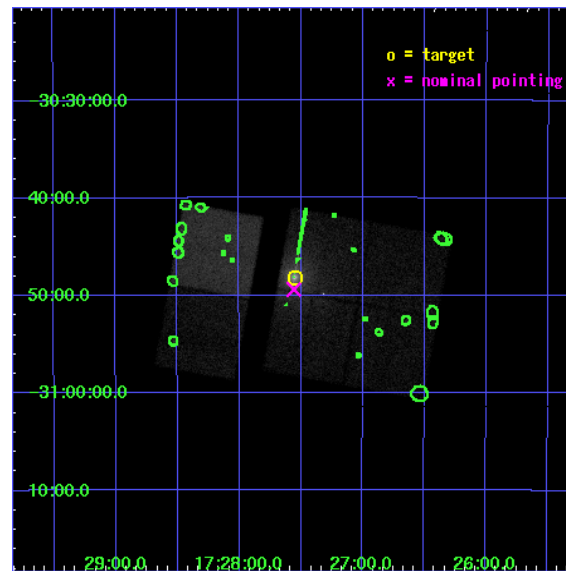
L2 Processing Date : Mar 14 2006

## Contents

<b>1</b>	<b>Front</b>	<b>2</b>
<b>2</b>	<b>OBI</b>	<b>3</b>
2.1	OBI . . . . .	3
2.1.1	Images . . . . .	3
2.1.2	Bias . . . . .	3
2.1.3	Parameters . . . . .	4
2.1.4	Events . . . . .	4
2.2	Compared Parameters . . . . .	5
2.3	Aspect . . . . .	6
2.4	Star Slots . . . . .	9
2.4.1	Slot 3 . . . . .	9
2.4.2	Slot 4 . . . . .	10
2.4.3	Slot 5 . . . . .	11
2.4.4	Slot 6 . . . . .	12
2.4.5	Slot 7 . . . . .	13
2.5	FID Slots . . . . .	14
2.5.1	Slot 0 . . . . .	14
2.5.2	Slot 1 . . . . .	15
2.5.3	Slot 2 . . . . .	16
<b>3</b>	<b>Point Sources</b>	<b>17</b>
<b>A</b>	<b>Summary</b>	<b>18</b>
A.1	Status . . . . .	18
A.2	Comments . . . . .	18

# 1 Front

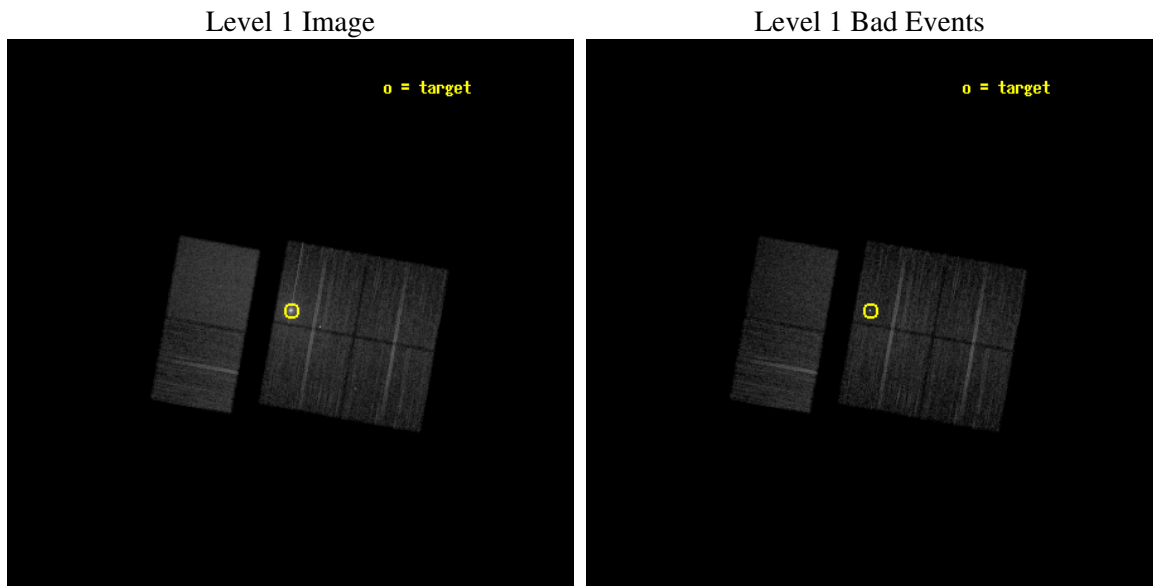
seq_num	400441
obs_id	6344
title	Measuring Dense Clouds with X-rays and Millimeter Waves
observer	Dr. Randall Smith
object	X1724-307
dtcycle	0
cycle	P
ra_targ	261.887083
dec_targ	-30.8024
ra_nom	261.88927432792
dec_nom	-30.823330004086
roll_nom	280.20979862174
revision	2
ontime	11967.958965123
livetime	11816.413462467
ontime0	11971.199955404
ontime1	11971.199955404
ontime2	11967.958965123
ontime3	11967.958965123
ontime6	11971.199955404
ontime7	11971.199955404
l2events	143313



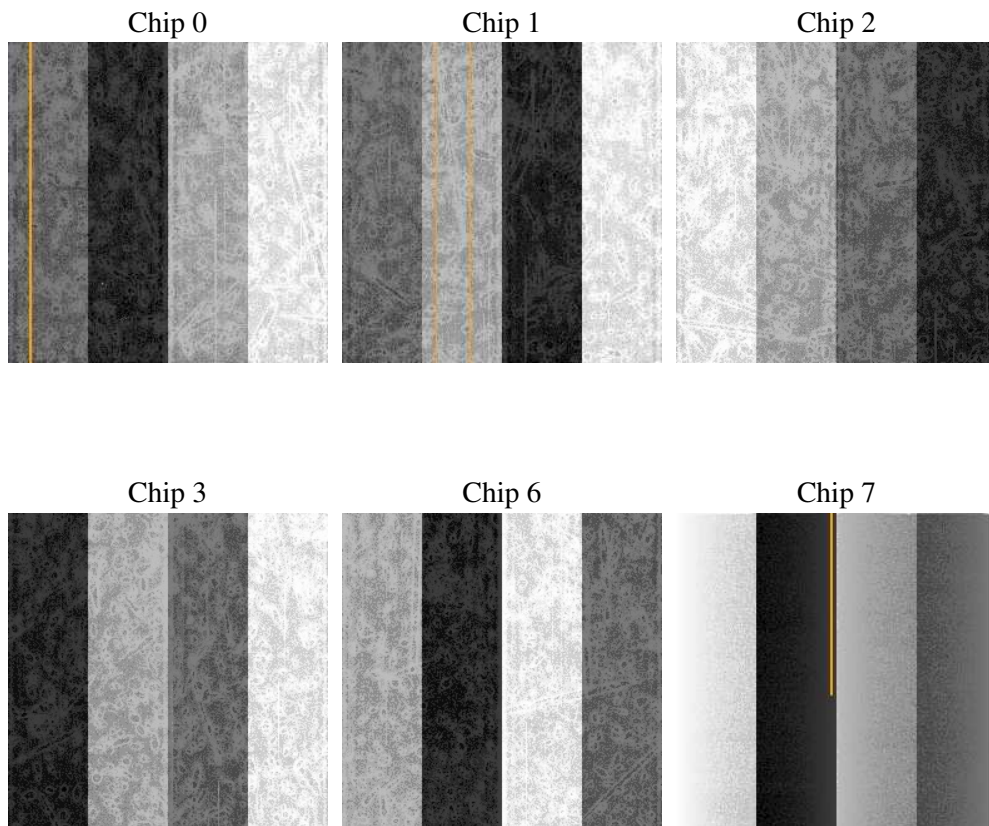
## 2 OBI

### 2.1 OBI

#### 2.1.1 Images



#### 2.1.2 Bias



### 2.1.3 Parameters

obi_num	1
ascdsver	7.6.7.1
caldsver	3.2.1
date	2006-03-14T15:18:48
revision	2

sched_exp_time	11785.061000
ontime	12659.392429292
ontime0	12662.633419573
ontime1	12662.633419573
ontime2	12659.392409384
ontime3	12659.392429292
ontime6	12662.633419573
ontime7	12662.633419573
l1events	642881

### 2.1.4 Events

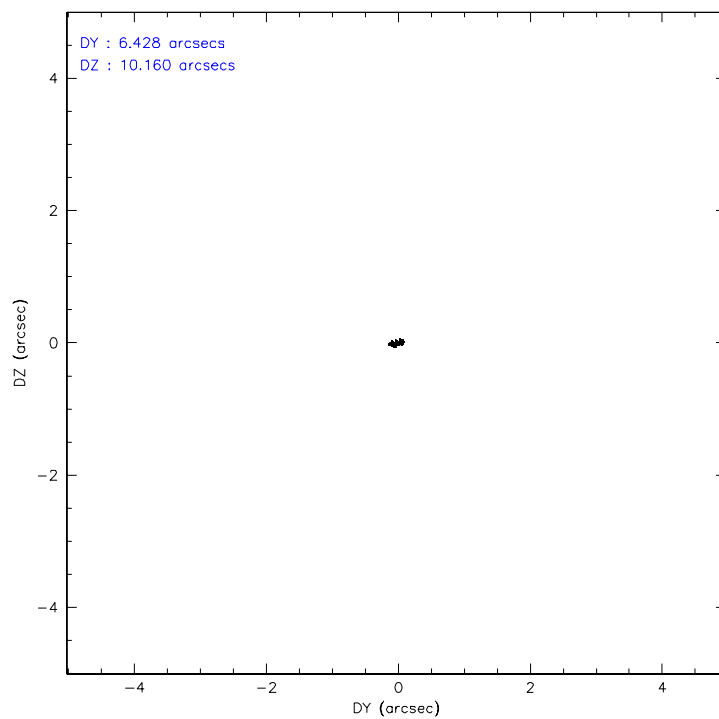
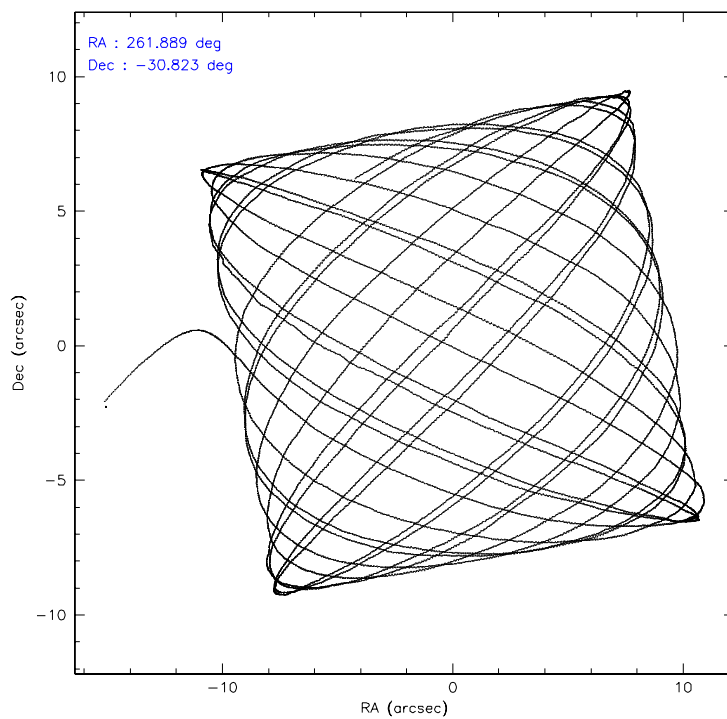
	ccd 0	ccd 1	ccd 2	ccd 3	ccd 6	ccd 7
level 1 events	86450	89238	100427	134474	101446	130846
rejected events	73736	76019	82810	87089	88152	80921
rejected %	85%	85%	82%	64%	86%	61%

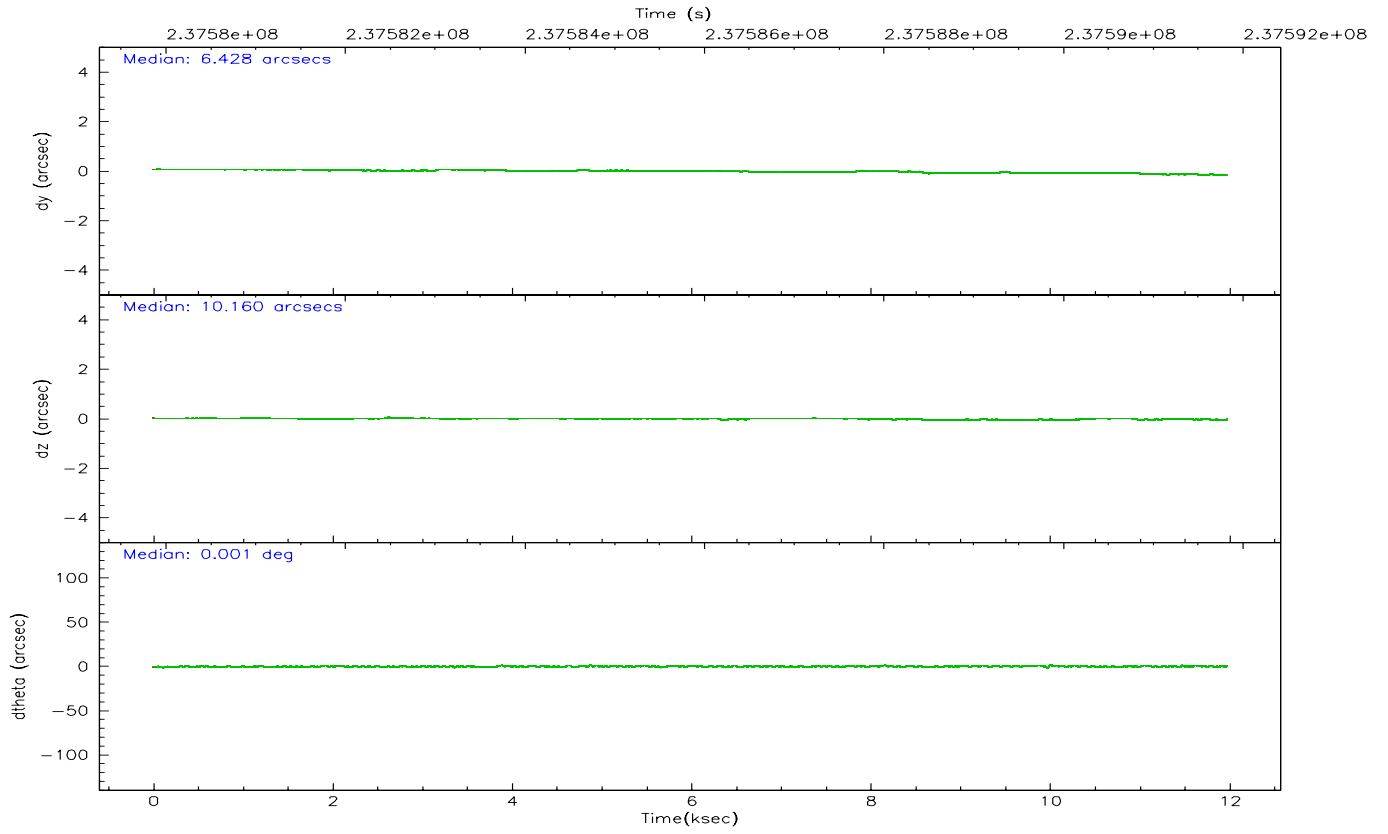
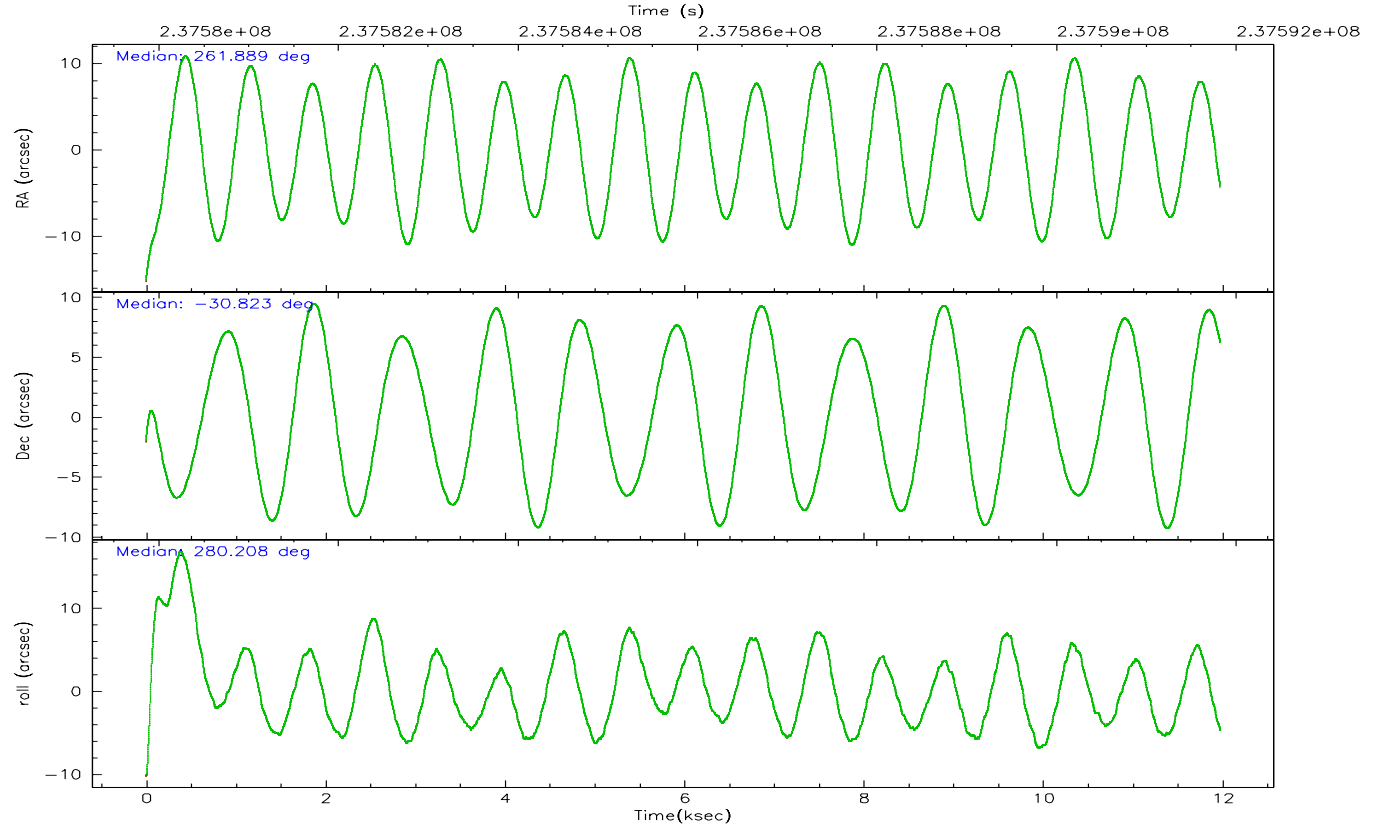
	ccd 0	ccd 1	ccd 2	ccd 3	ccd 6	ccd 7
grade 0 events	6469	6144	10736	32092	6356	3556
	7%	6%	10%	23%	6%	2%
grade 1 events	58	48	102	1352	53	85
	0%	0%	0%	1%	0%	0%
grade 2 events	2659	2939	3086	7018	2894	13365
	3%	3%	3%	5%	2%	10%
grade 3 events	1139	1263	1299	2690	1221	2814
	1%	1%	1%	2%	1%	2%
grade 4 events	1039	1213	1293	2770	1107	2709
	1%	1%	1%	2%	1%	2%
grade 5 events	3804	4101	3630	5508	4554	8185
	4%	4%	3%	4%	4%	6%
grade 6 events	2092	2401	2027	4313	2517	30284
	2%	2%	2%	3%	2%	23%
grade 7 events	69190	71129	78254	78731	82744	69848
	80%	79%	77%	58%	81%	53%

## 2.2 Compared Parameters

Parameter	Planned	Actual	Parameter	Planned	Actual
Instrument	ACIS	ACIS	Obspar format version number	6	6
Detector	ACIS-012367	ACIS-012367	Obspar file type	PREDICTED	ACTUAL
Grating	NONE	NONE	Obspar update status	NONE	UPDATED
Data mode	FAINT	FAINT	On-chip summing requested	N	N
Observation mode	POINTING	POINTING	Subarray requested	NONE	NONE
Pointing RA	261.868589	261.8892743279193	Alternating exposures requested	N	N
Pointing Dec	-30.802494	-30.82333000408573	Primary exposure time	0.000000	3.2
Pointing Roll	279.990533	280.2097986217391			
SIM focus pos (mm)	-0.782348	-0.7809083437167272			
SIM defocus (mm)	0	0.001439871863259334			
SIM translation stage pos (mm)	-215.592463	-215.5849369016591			
SIM translation stage offset (mm)	-18	-18.0075161012706			
Observation start time	237580040.184000	237578621.60591			
Observation start date	2005-07-12T18:26:16	2005-07-12T18:03:41			
Observation end time	237591825.184000	237592054.74402			
Observation end date	2005-07-12T21:42:41	2005-07-12T21:47:34			
Read mode	TIMED	TIMED			

## 2.3 Aspect



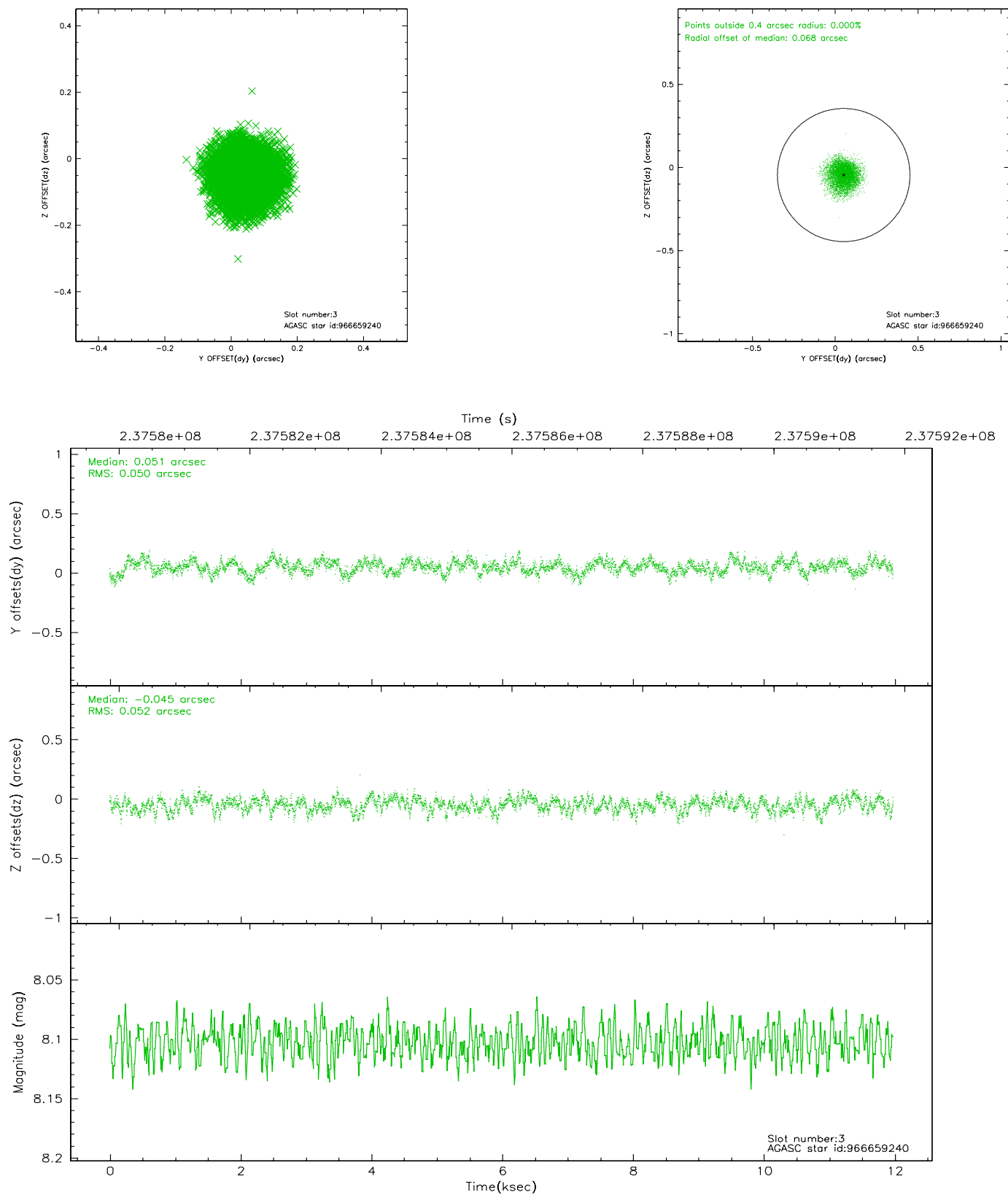


### Slot Statistics

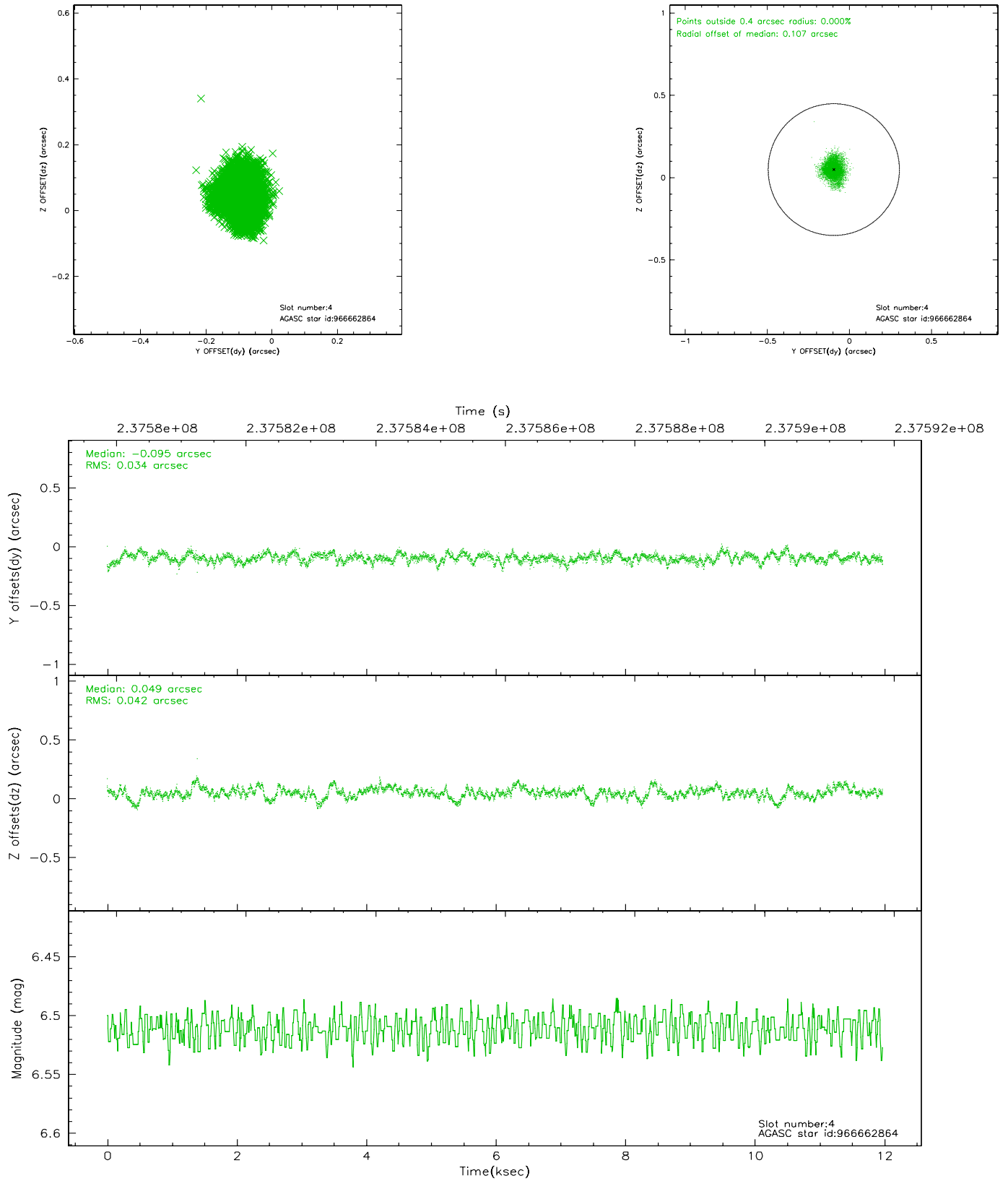
slot	status	id	mag	n_pts	med_dy	med_dz	dr1	dr2	ra	dec	mean_y	mean_z
0	FID	ACIS-I-2	7.19	2920	0.060	-0.044	0.007	0.012	0.000000	0.000000	-762.19	-1207.73
1	FID	ACIS-I-5	7.23	2920	-0.264	0.099	0.007	0.012	0.000000	0.000000	-1815.74	693.91
2	FID	ACIS-I-6	7.28	2920	0.108	0.013	0.006	0.010	0.000000	0.000000	398.22	1338.69
3	GUIDE	966659240	8.10	5841	0.051	-0.045	0.079	0.124	262.189777	-30.931568	631.44	895.99
4	GUIDE	966662864	6.51	5841	-0.095	0.049	0.056	0.096	261.732957	-31.091595	953.05	-592.08
5	GUIDE	966663720	7.86	5838	0.002	0.008	0.065	0.112	262.170068	-31.384212	2224.97	548.85
6	GUIDE	966663784	8.74	5823	0.070	0.005	0.087	0.138	261.636886	-31.482666	2289.65	-1125.28
7	GUIDE	966656976	10.22	5836	-0.023	-0.017	0.206	0.325	261.420254	-30.527296	-1213.43	-1198.00

## 2.4 Star Slots

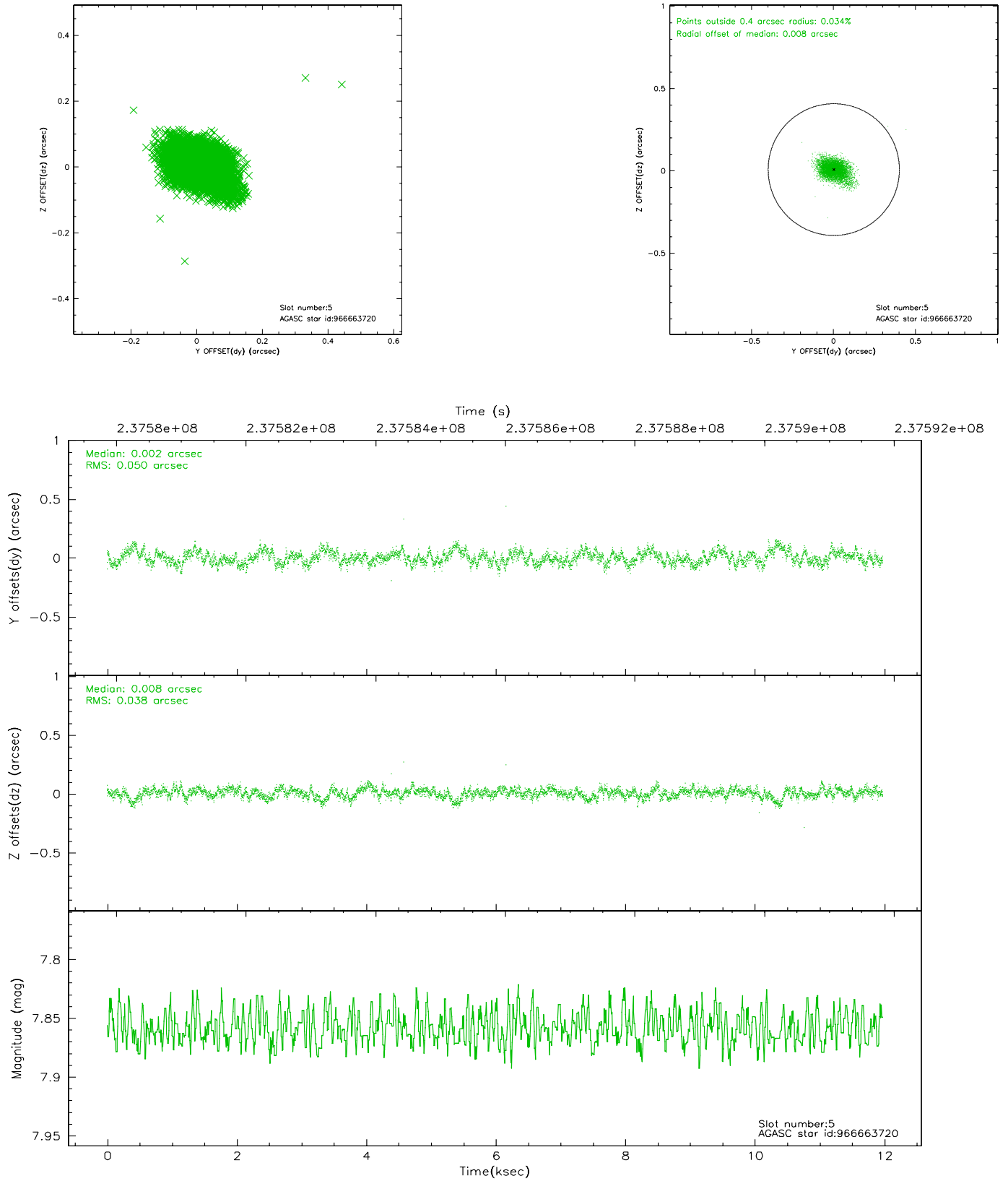
### 2.4.1 Slot 3



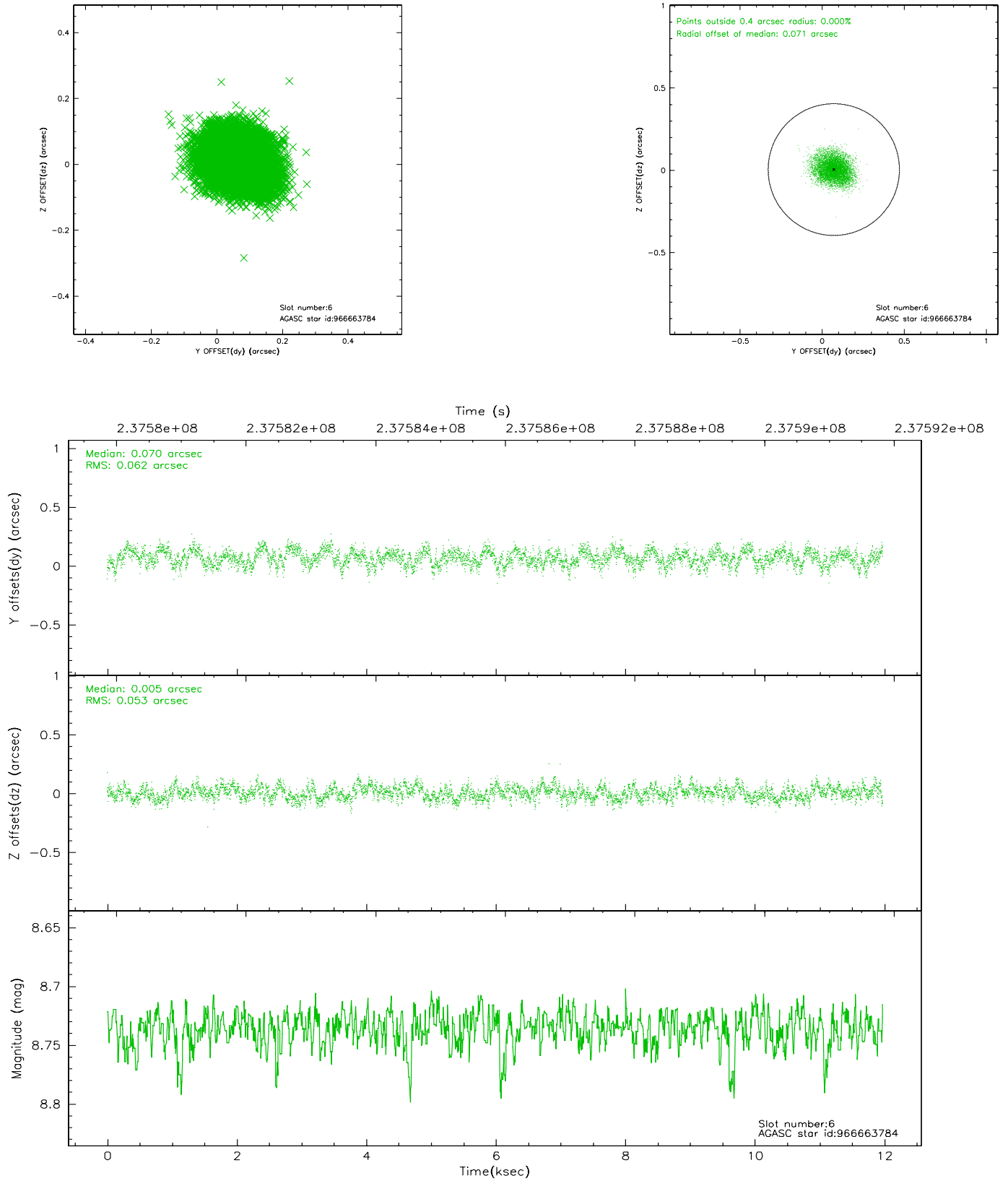
## 2.4.2 Slot 4



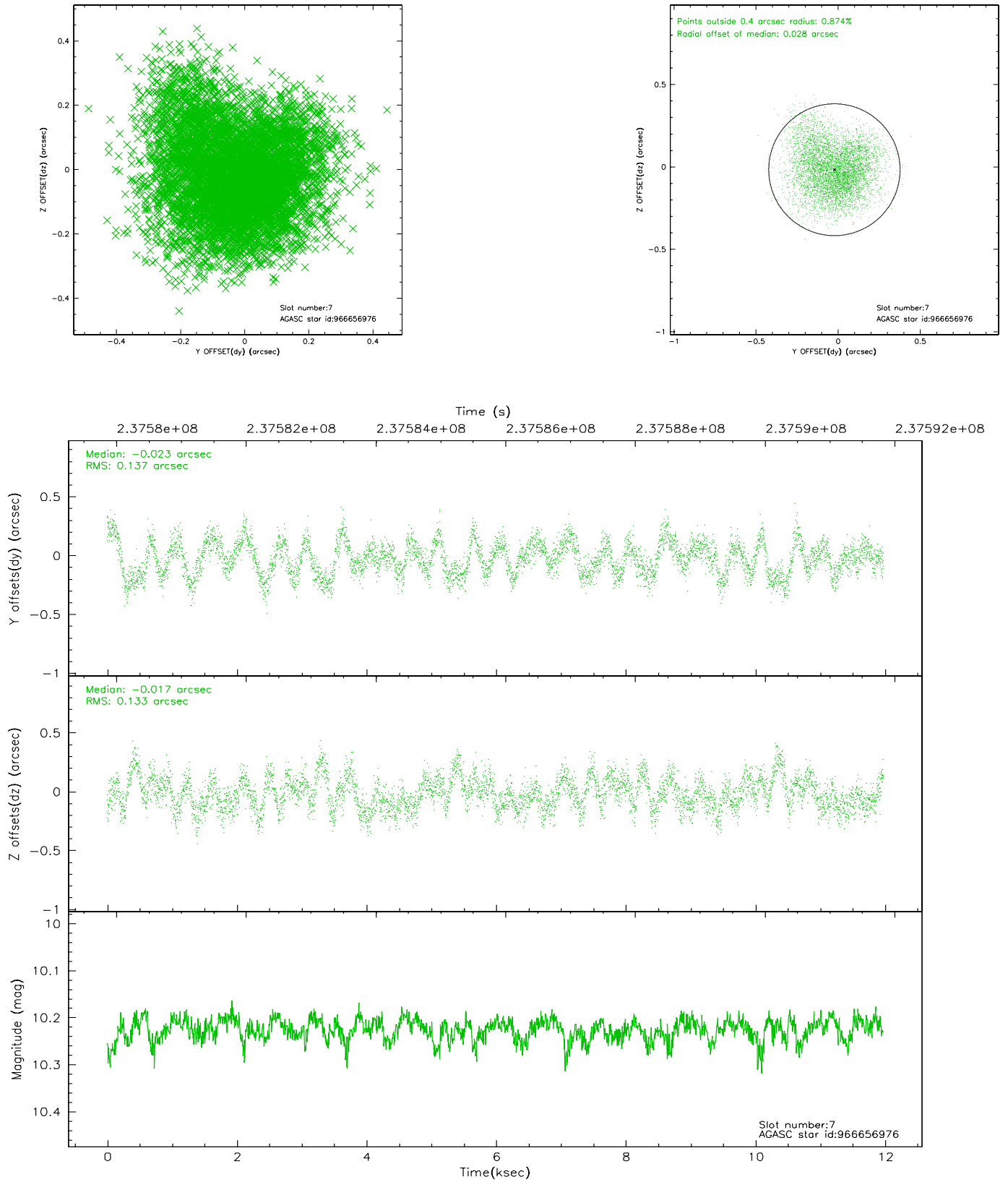
### 2.4.3 Slot 5



## 2.4.4 Slot 6

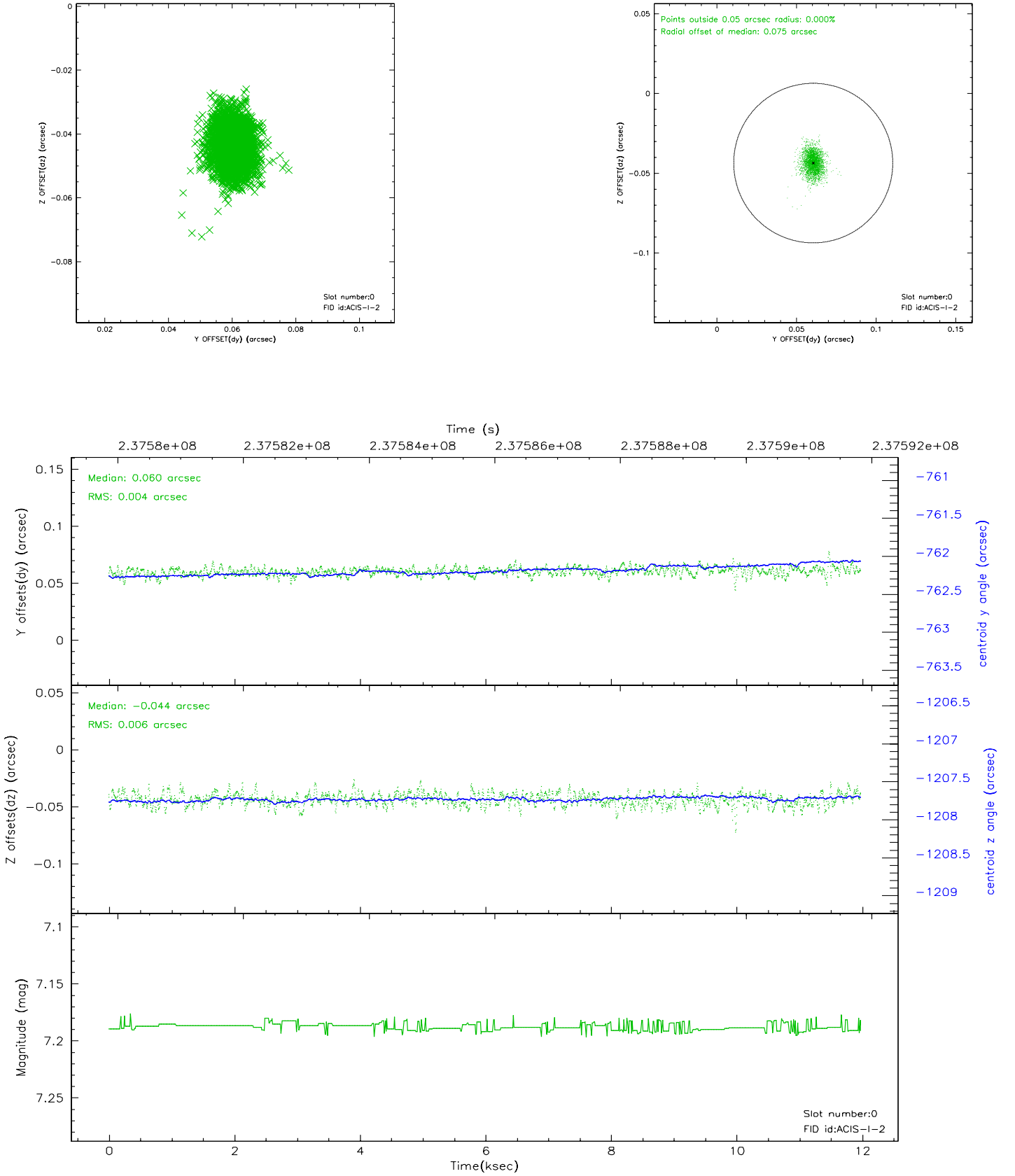


## 2.4.5 Slot 7

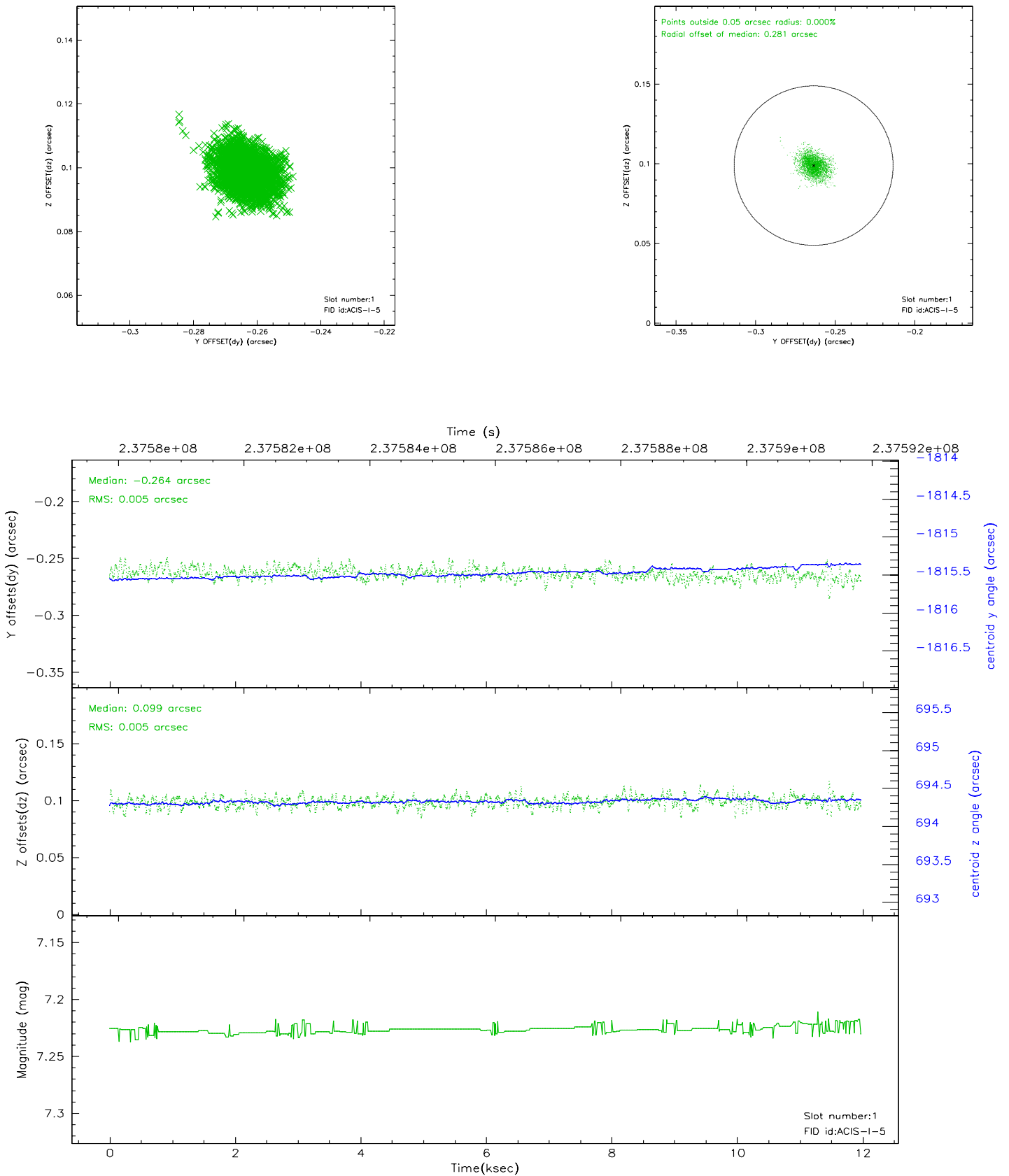


## 2.5 FID Slots

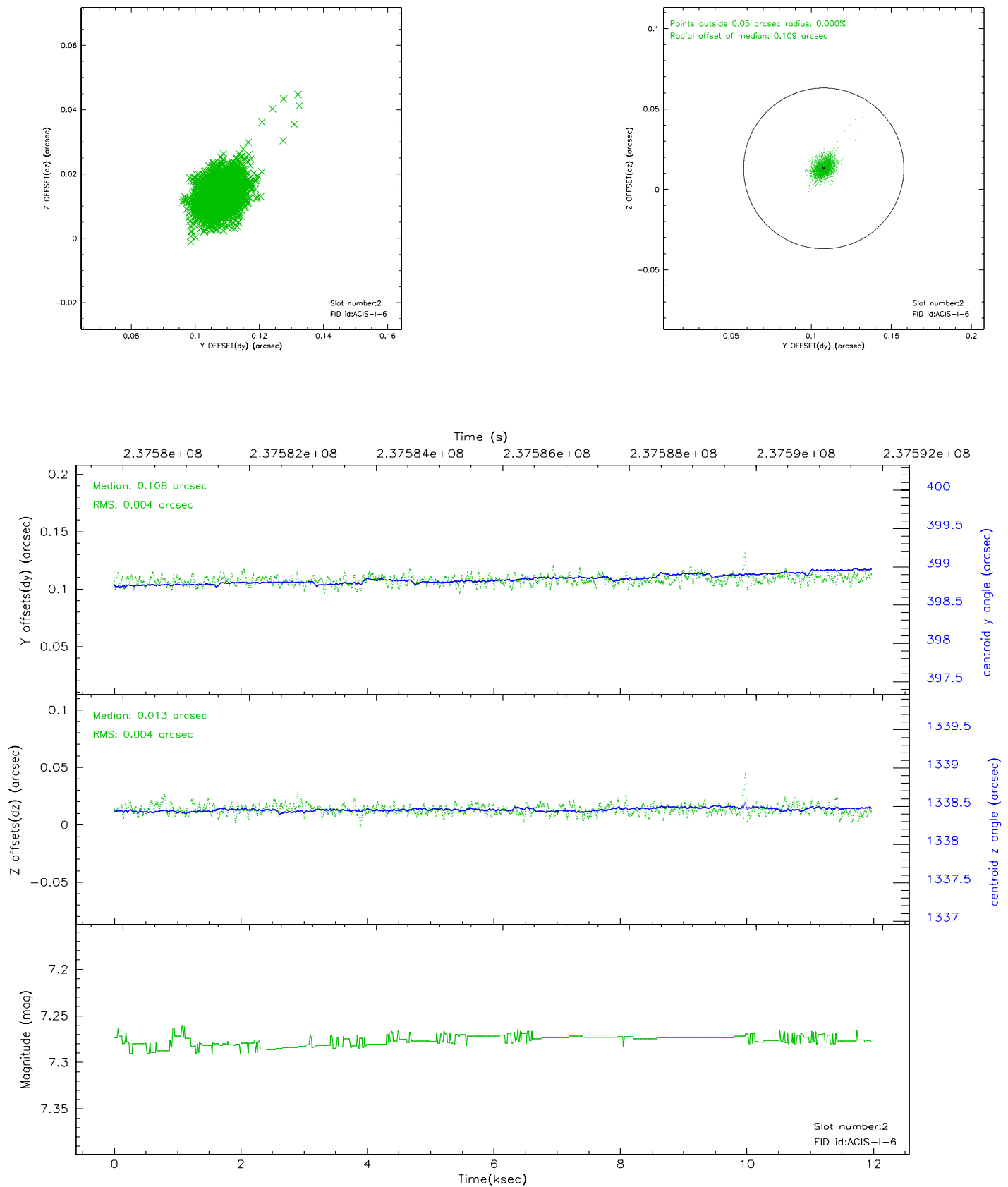
### 2.5.1 Slot 0



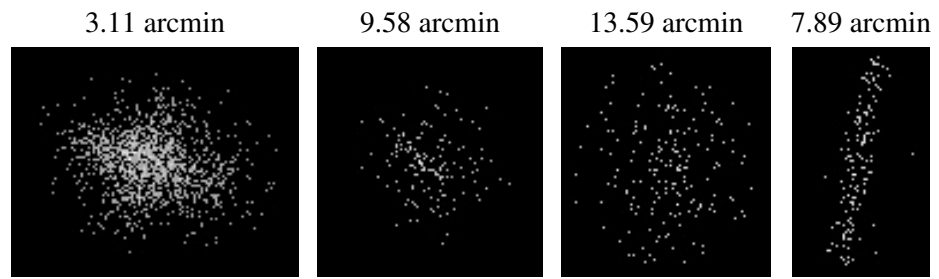
## 2.5.2 Slot 1



### 2.5.3 Slot 2



### 3 Point Sources



## A Summary

### A.1 Status

V&V Scientist	Jen Lauer
V&V Date (YYYY-MM-DD)	2006.03.14
V&V Edition	1
V&V Disposition and Status	OK
V&V Charge Time	11.96795

### A.2 Comments

SIM-Z offset is acceptable per aspect review.