

V&V Reference Report

L2 ASCDS Version : 8.5.1.1

Observation 6279 - L2 Version 3
Chandra X-Ray Center

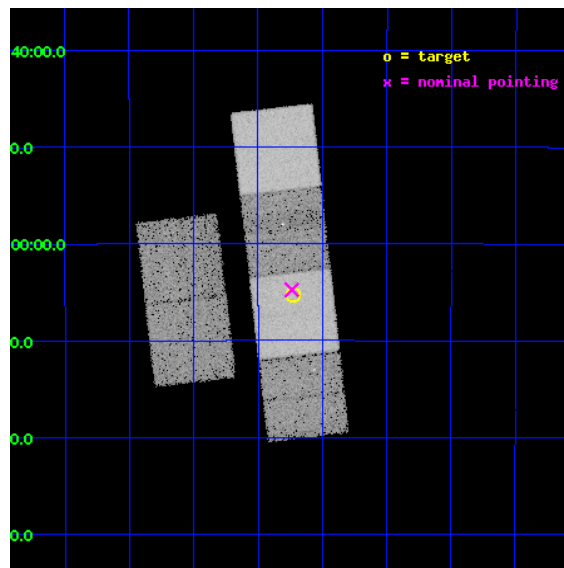
L2 Processing Date : Dec 23 2012

Contents

1	Front	2
2	OBI	3
2.1	OBI	3
2.1.1	Images	3
2.1.2	Bias	3
2.1.3	Parameters	4
2.1.4	Events	4
2.2	Compared Parameters	5
2.3	Aspect	6
2.4	Star Slots	9
2.4.1	Slot 3	9
2.4.2	Slot 4	10
2.4.3	Slot 5	11
2.4.4	Slot 6	12
2.4.5	Slot 7	13
2.5	FID Slots	14
2.5.1	Slot 0	14
2.5.2	Slot 1	15
2.5.3	Slot 2	16
A	Summary	17
A.1	Status	17
A.2	Comments	17

1 Front

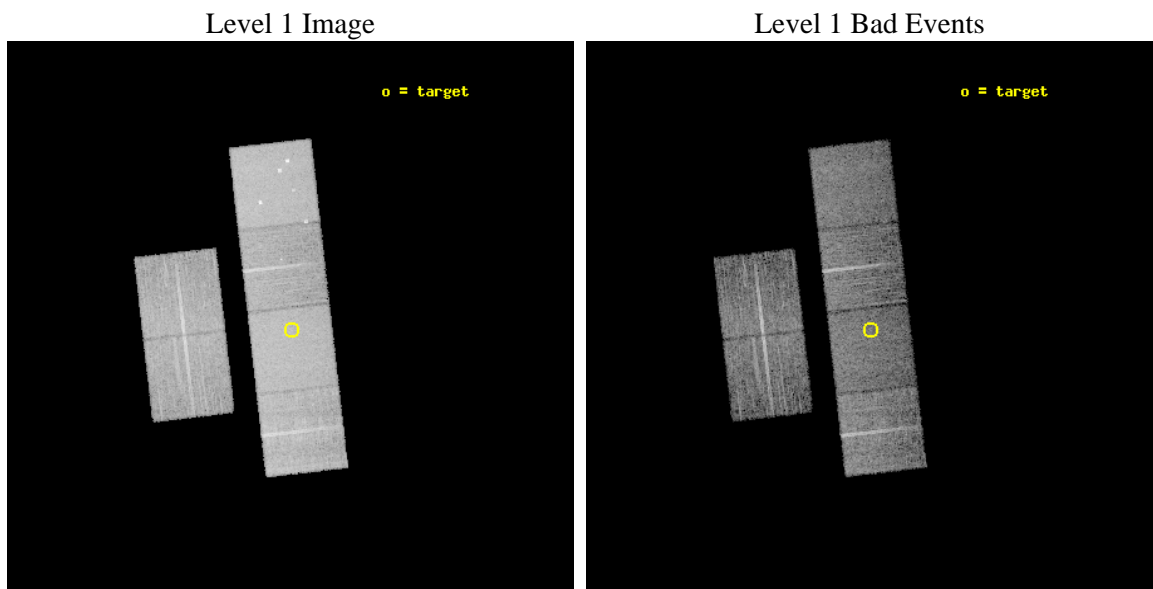
seq_num	400398	Sequence number
obs_id	6279	Observation id
title	Cooling curves of accretion-heated neutron stars	Proposal title
observer	Dr. Rudy Wijnands	Principal investigator
object	KS 1731-260	Source name
dtcycle	0	
cycle	P	events from which exps? Prim/Second/Both
ra_targ	263.55625	Observer's specified target RA [deg]
dec_targ	-26.088556	Observer's specified target Dec [deg]
ra_nom	263.55935381678	Nominal RA [deg]
dec_nom	-26.079290710608	Nominal Dec [deg]
roll_nom	83.457986650684	Nominal Roll [deg]
revision	3	Processing version of data
ontime	10508.799960852	Sum of GTIs [s]
livetime	10375.731208108	Livetime [s]
ontime2	10508.799960852	Sum of GTIs [s]
ontime3	10508.799960852	Sum of GTIs [s]
ontime5	10508.799960852	Sum of GTIs [s]
ontime6	10508.799960852	Sum of GTIs [s]
ontime7	10508.799960852	Sum of GTIs [s]
ontime8	10505.558970571	Sum of GTIs [s]
l2events	164764	Number of level 2 events



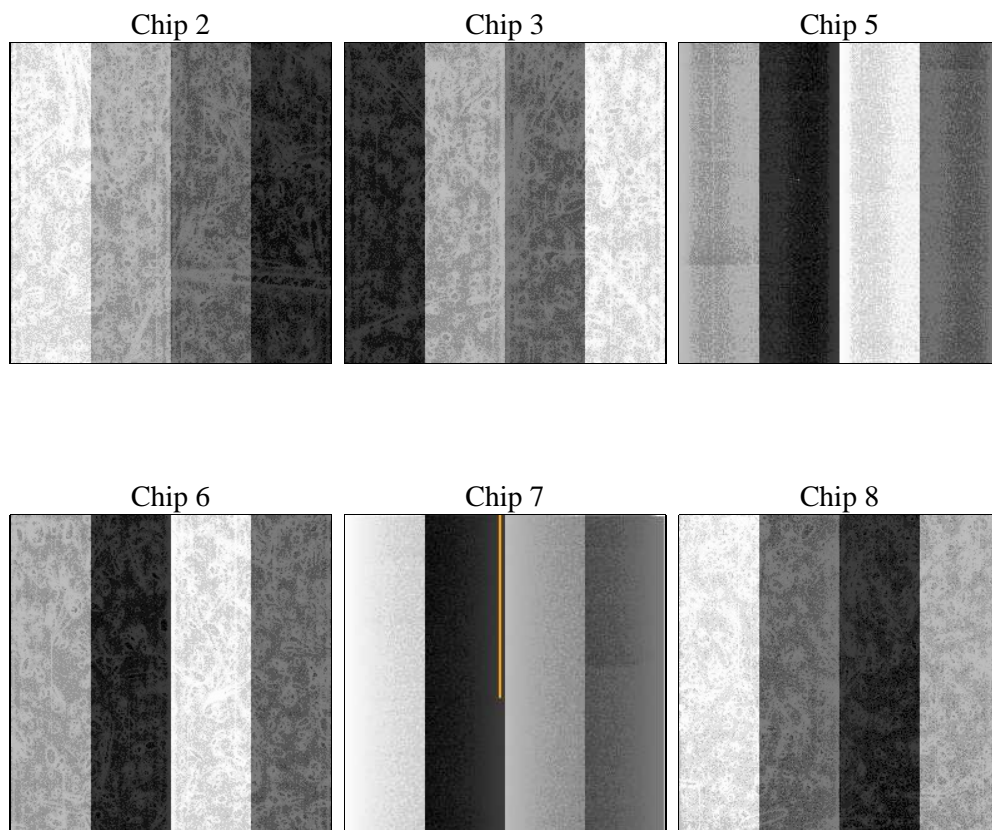
2 OBI

2.1 OBI

2.1.1 Images



2.1.2 Bias



2.1.3 Parameters

obi_num	0	Obi number	sched_exp_time	10753.811000	[s] Scheduled observation exposure time
ascdsver	8.5.1.1	Processing system revision	ontime	10508.799960852	Sum of GTIs [s]
caldsver	4.5.5	 	ontime2	10508.799960852	Sum of GTIs [s]
date	2012-12-23T04:23:37	Date and time of file creation	ontime3	10508.799960852	Sum of GTIs [s]
revision	3	Processing version of data	ontime5	10508.799960852	Sum of GTIs [s]
			ontime6	10508.799960852	Sum of GTIs [s]
			ontime7	10508.799960852	Sum of GTIs [s]
			ontime8	10505.558970571	Sum of GTIs [s]
			l1events	576336	Number of level 1 events

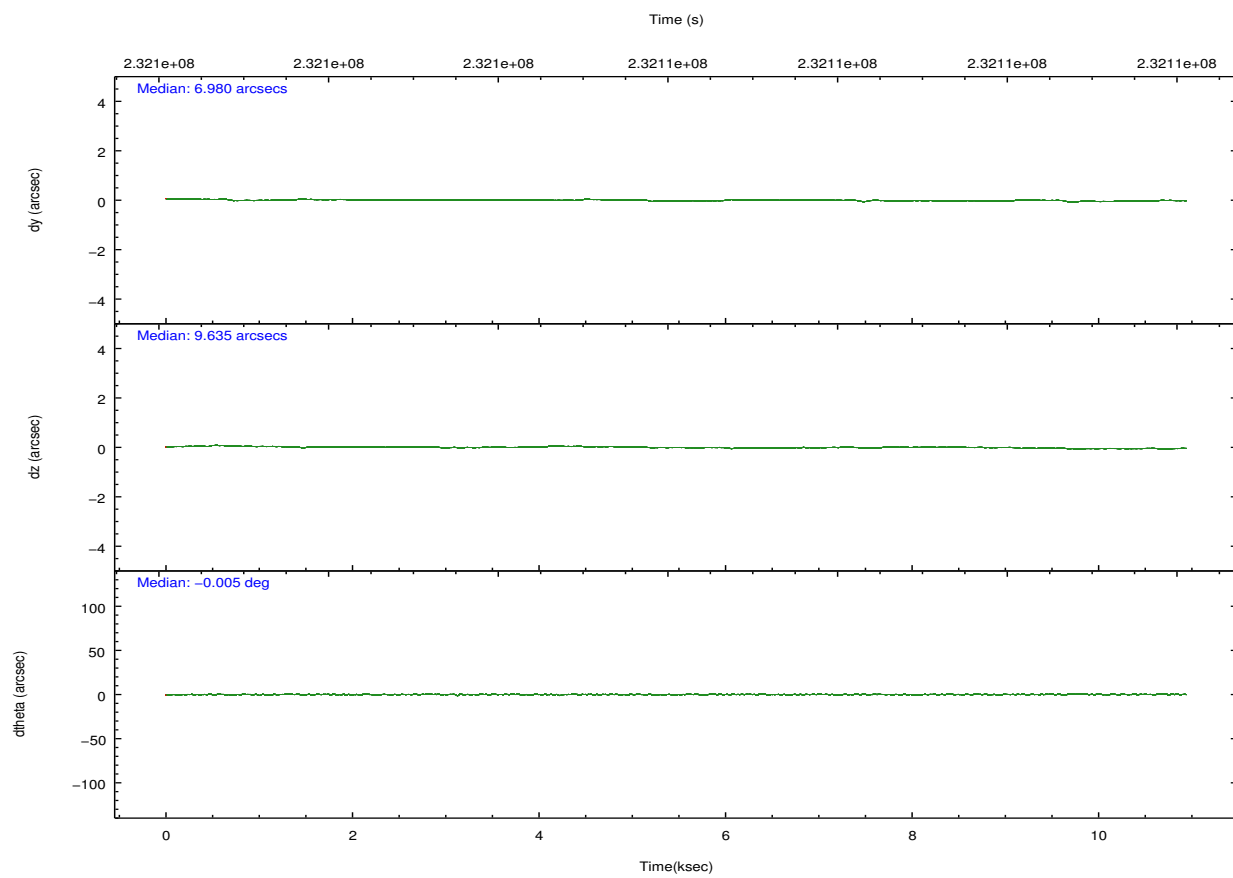
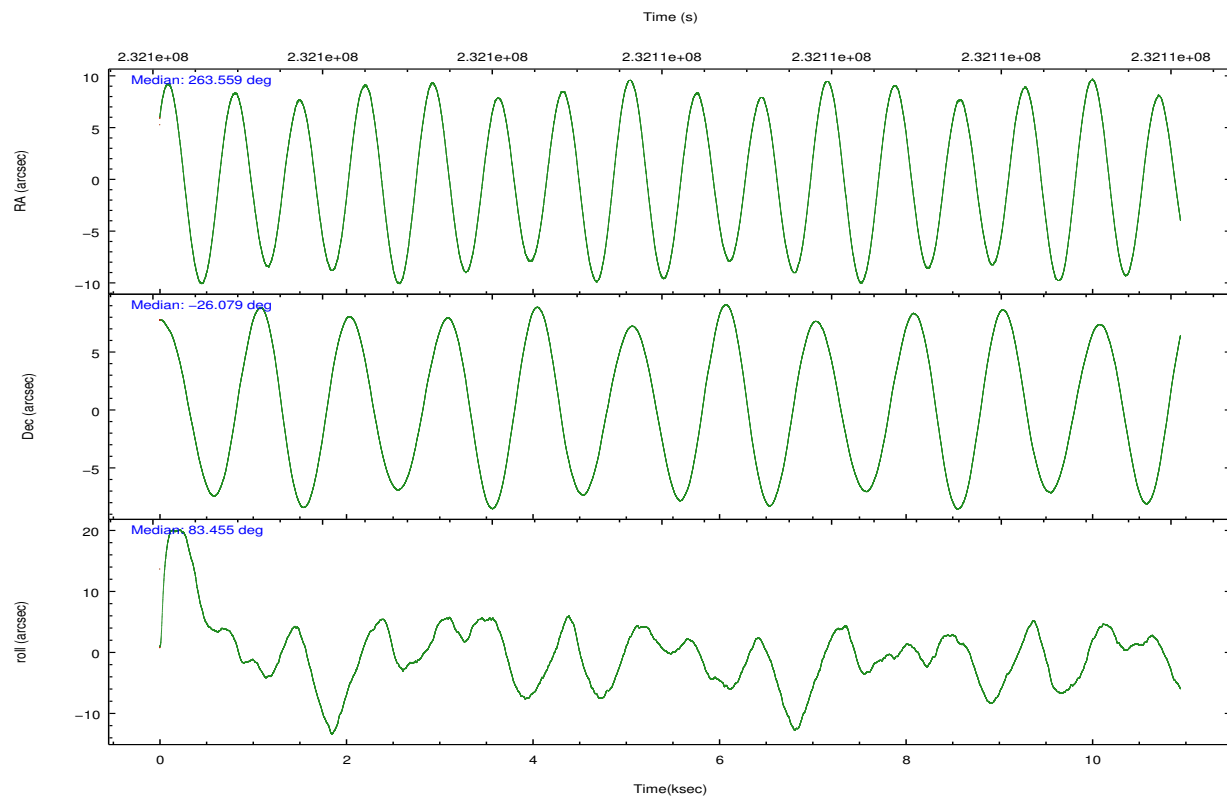
2.1.4 Events

	ccd 2	ccd 3	ccd 5	ccd 6	ccd 7	ccd 8		ccd 2	ccd 3	ccd 5	ccd 6	ccd 7	ccd 8
level 1 events	80063	77345	122314	80054	110979	105581	grade 0 events	7665	7843	8097	8182	5058	12179
rejected events	65768	62773	59983	64452	57903	75908		9%	10%	6%	10%	4%	11%
rejected %	82%	81%	49%	80%	52%	71%	grade 1 events	60	64	206	55	98	84
								0%	0%	0%	0%	0%	0%
							grade 2 events	2658	2707	18055	3083	10160	5884
								3%	3%	14%	3%	9%	5%
							grade 3 events	1021	1022	2532	1029	4489	2820
								1%	1%	2%	1%	4%	2%
							grade 4 events	981	986	2514	967	4395	2586
								1%	1%	2%	1%	3%	2%
							grade 5 events	2851	3416	8148	3394	9257	4372
								3%	4%	6%	4%	8%	4%
							grade 6 events	1976	2019	31164	2348	28993	6243
								2%	2%	25%	2%	26%	5%
							grade 7 events	62851	59288	51598	60996	48529	71413
								78%	76%	42%	76%	43%	67%

2.2 Compared Parameters

Parameter	Planned	Actual	Parameter	Planned	Actual
Instrument	ACIS	ACIS	Obspar format version number	7	7
Detector	ACIS-235678	ACIS-235678	Obspar file type	PREDICTED	ACTUAL
Grating	NONE	NONE	Obspar update status	NONE	UPDATED
Data mode	FAINT	FAINT	Number of optional ACIS chips dropped	0	0
Observation mode	POINTING	POINTING	On-chip summing requested	N	N
[deg] Pointing RA	263.571780	263.5593538167819	Subarray requested	NONE	NONE
[deg] Pointing Dec	-26.104122	-26.07929071060846	Alternating exposures requested	N	N
[deg] Pointing Roll	83.306835	83.45798665068432	[s] Primary exposure time	0.000000	3.2
[mm] SIM focus pos	-0.684267	-0.6828225247311905			
[mm] SIM defocus	0	0.001444936568705701			
[mm] SIM translation stage pos	-190.132523	-190.1400660498719			
[mm] SIM translation stage offset	0	0.00754346686406393			
[s] Observation start time (MET)	232100812.184000	232100280.79338			
Observation start date	2005-05-10T08:25:48	2005-05-10T08:18:00			
[s] Observation end time (MET)	232111566.184000	232111789.4939			
Observation end date	2005-05-10T11:25:02	2005-05-10T11:29:49			
Read mode	TIMED	TIMED			

2.3 Aspect

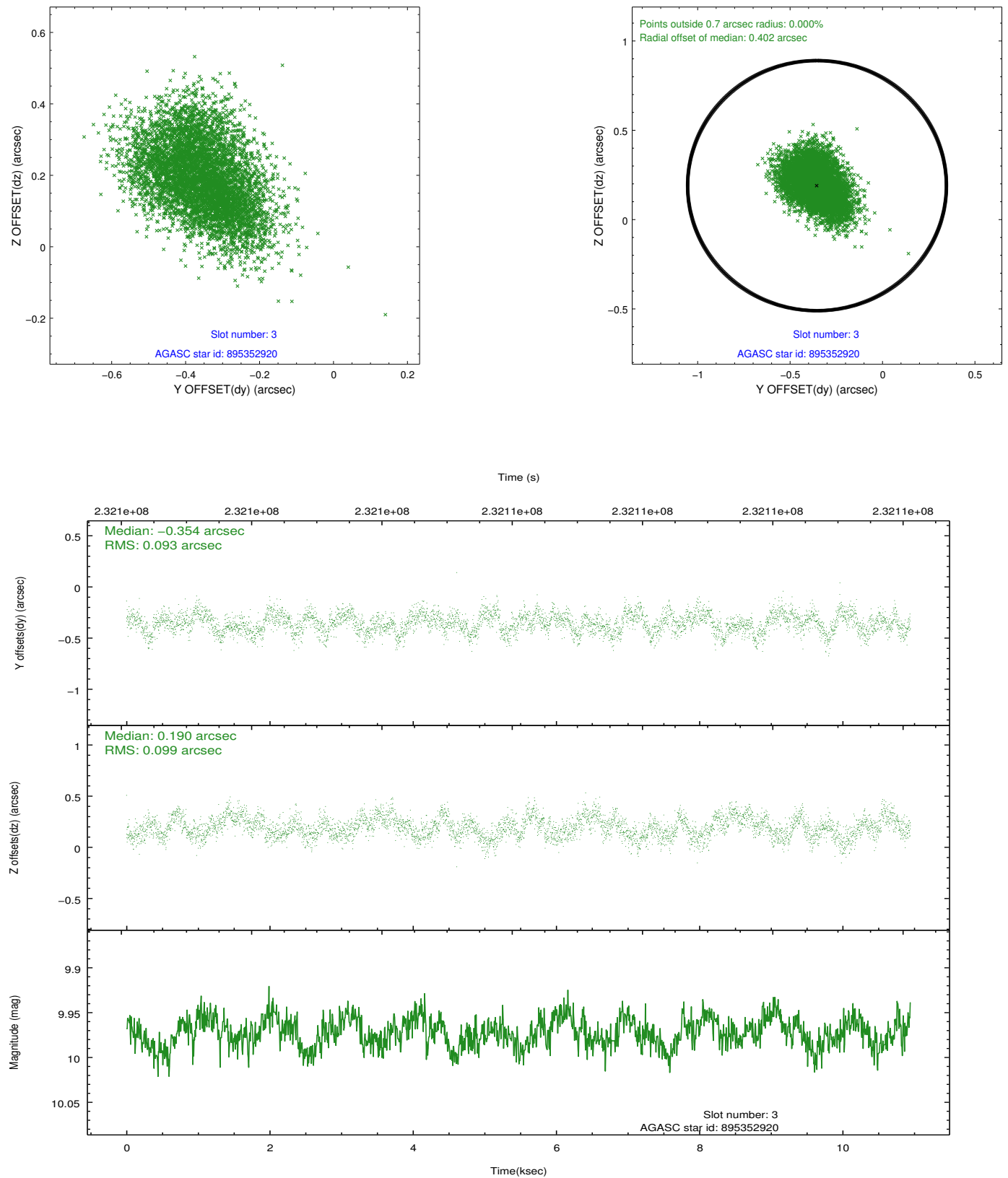


Slot Statistics

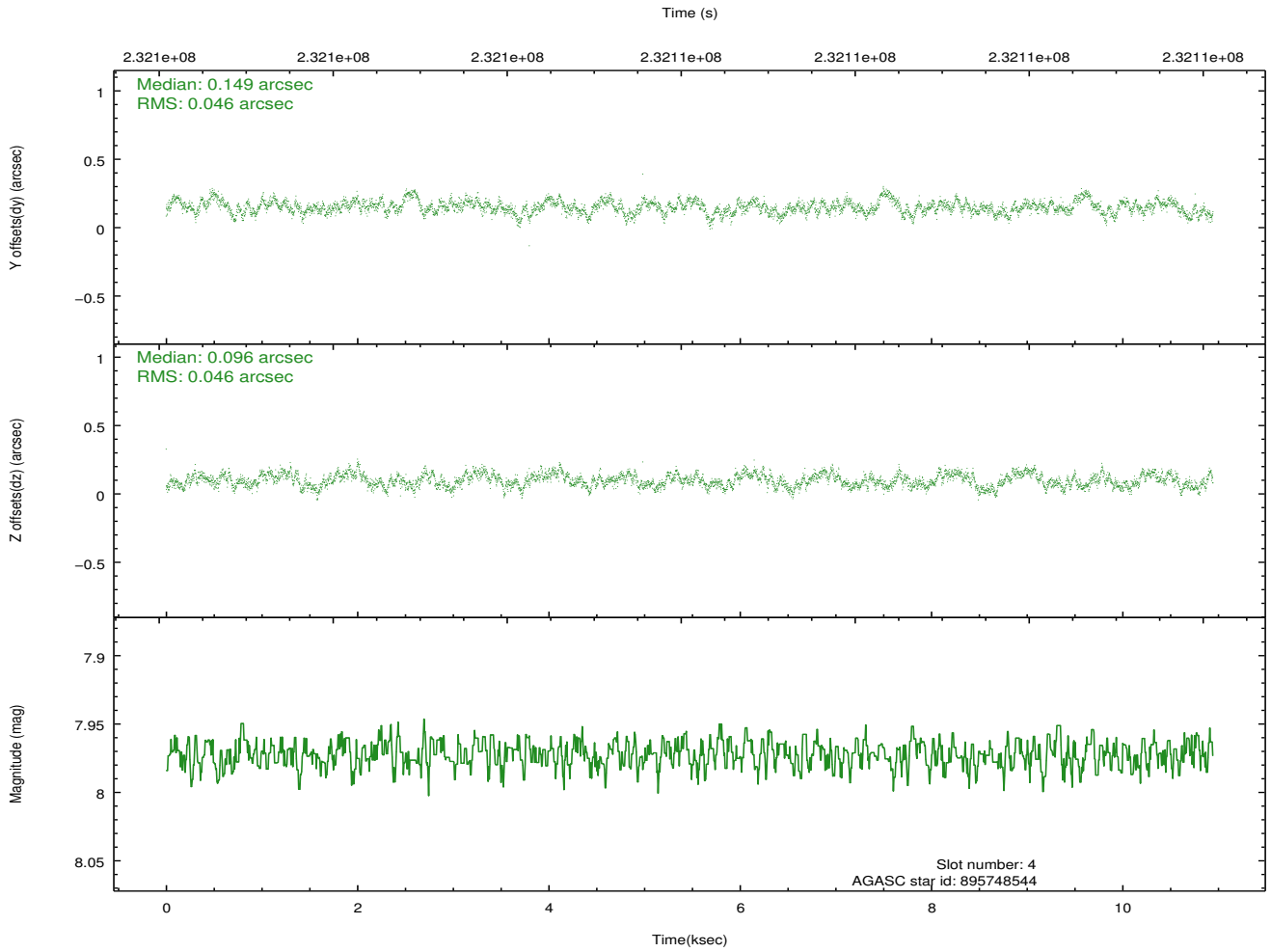
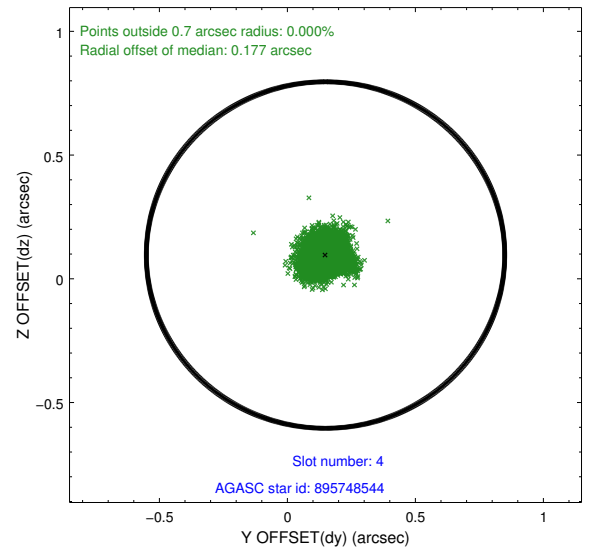
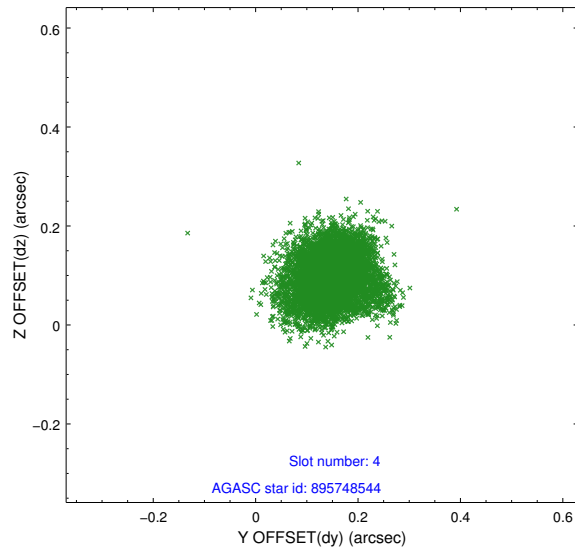
slot	status	id	mag	n_pts	med_dy	med_dz	dr1	dr2	ra	dec	mean_y	mean_z
0	FID	ACIS-S-2	7.10	2670	-0.054	-0.043	0.007	0.011	0.000000	0.000000	-759.75	-1730.92
1	FID	ACIS-S-4	7.21	2670	0.106	0.038	0.006	0.010	0.000000	0.000000	2153.44	177.20
2	FID	ACIS-S-5	7.24	2670	-0.083	0.014	0.007	0.012	0.000000	0.000000	-1812.05	171.32
3	GUIDE	895352920	9.97	5337	-0.354	0.190	0.145	0.232	264.217496	-25.713600	1635.31	-1916.28
4	GUIDE	895748544	7.97	5340	0.149	0.096	0.070	0.111	263.692859	-26.739685	-2226.39	-653.52
5	GUIDE	895881920	9.41	5335	0.215	-0.024	0.093	0.150	263.913988	-26.630022	-1753.21	-1314.67
6	GUIDE	895223200	10.45	5332	0.062	-0.383	0.189	0.310	262.834279	-26.055766	-112.11	2387.66
7	GUIDE	895353104	10.18	5334	-0.062	0.109	0.229	0.371	263.748270	-25.444684	2423.59	-291.66

2.4 Star Slots

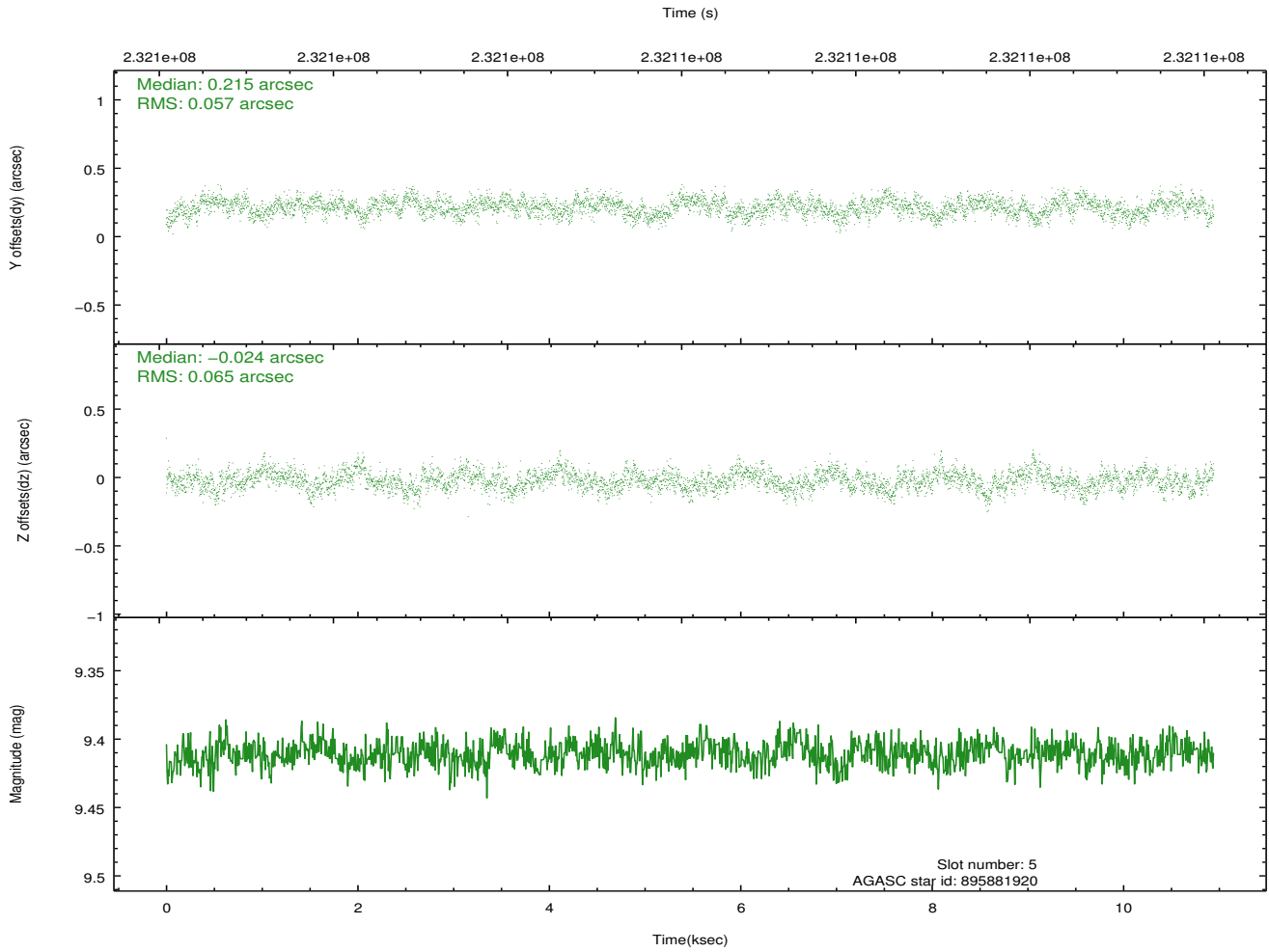
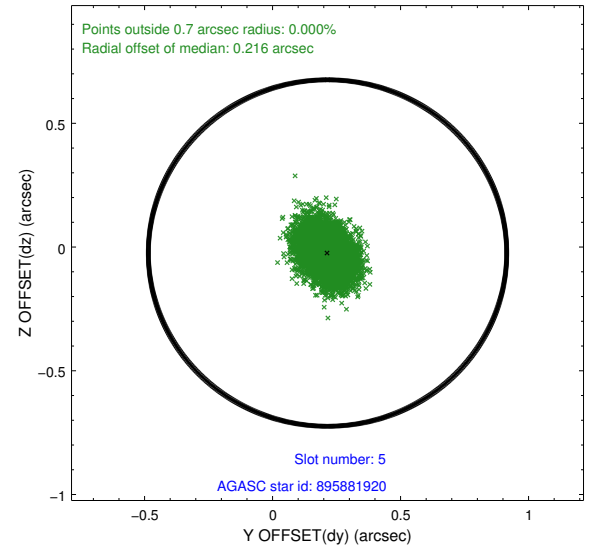
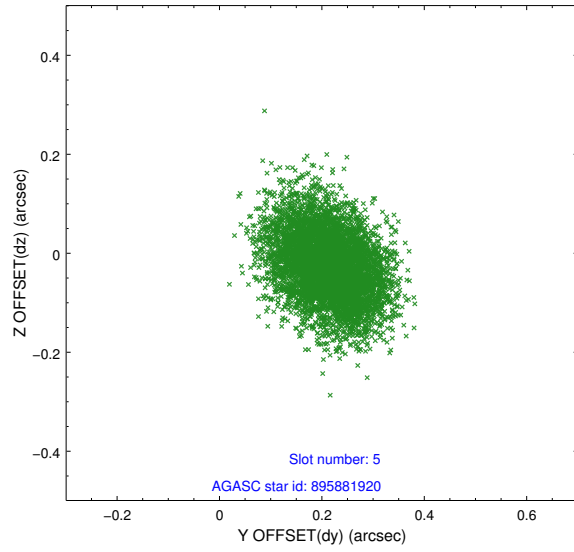
2.4.1 Slot 3



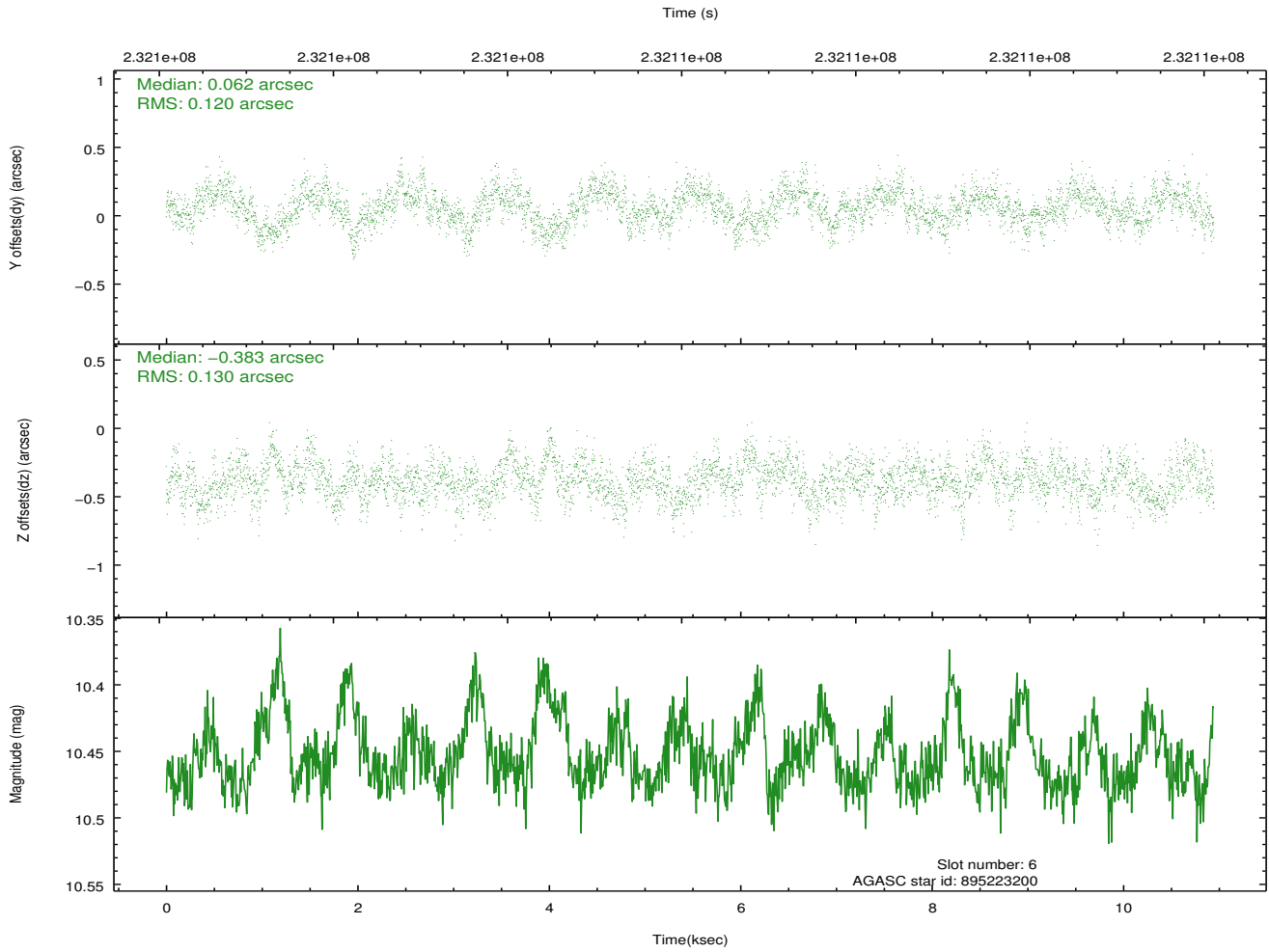
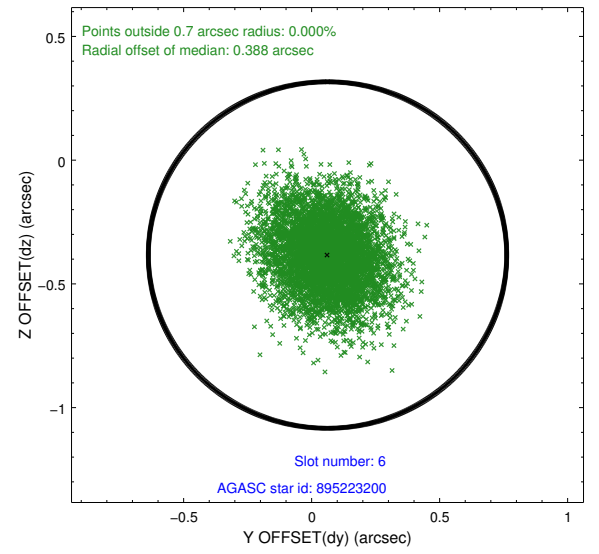
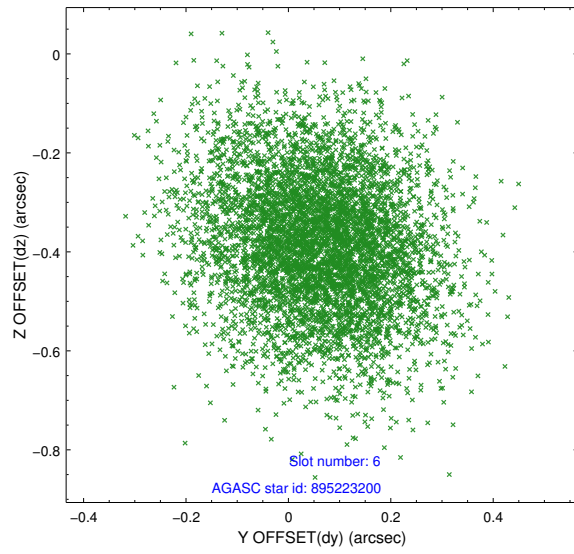
2.4.2 Slot 4



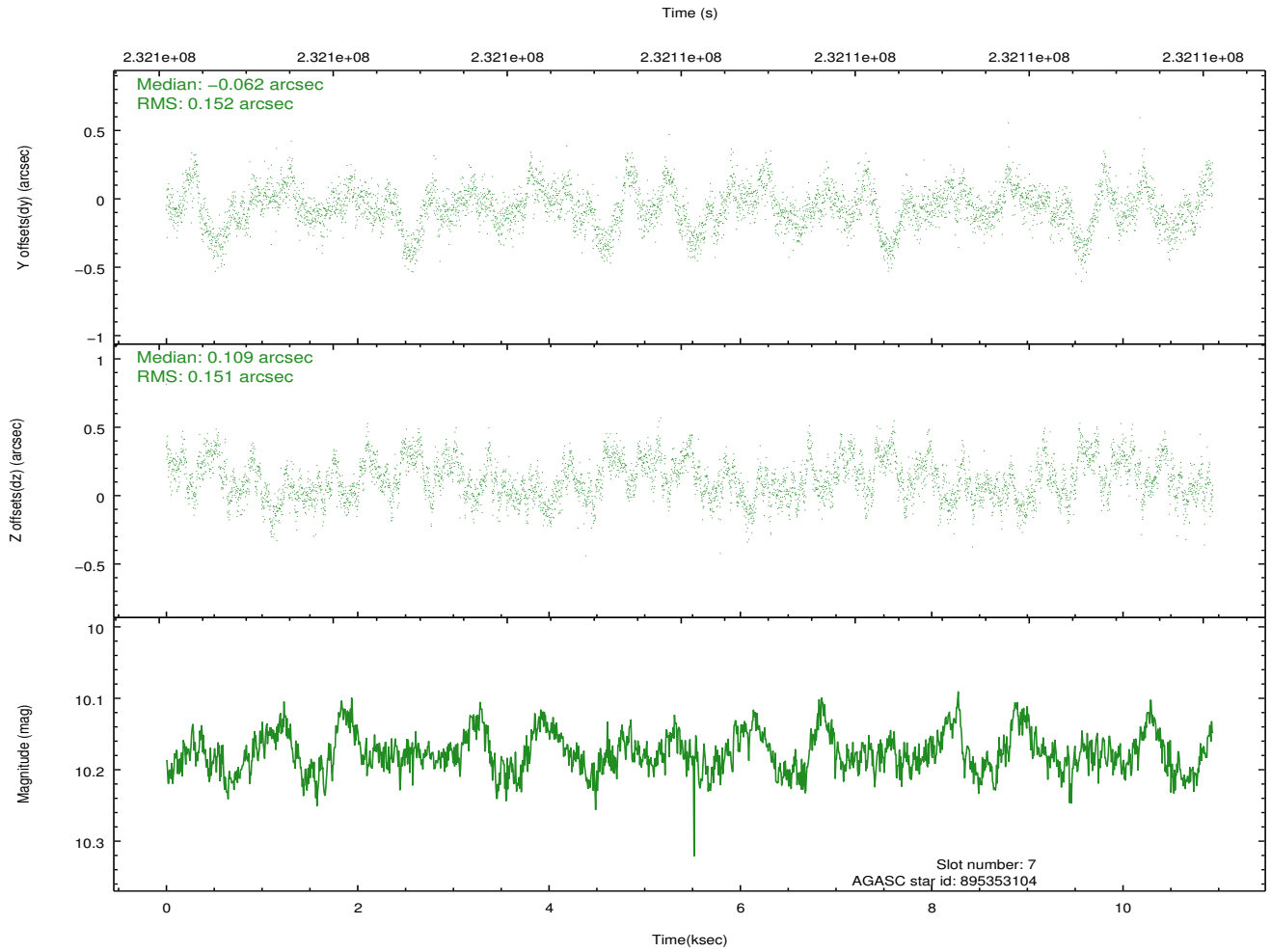
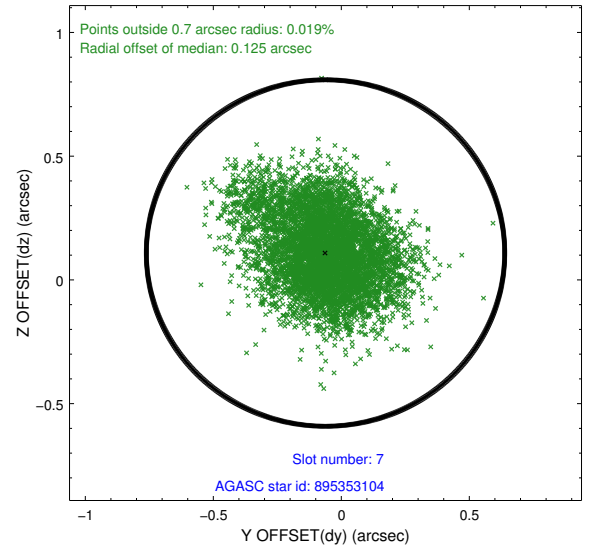
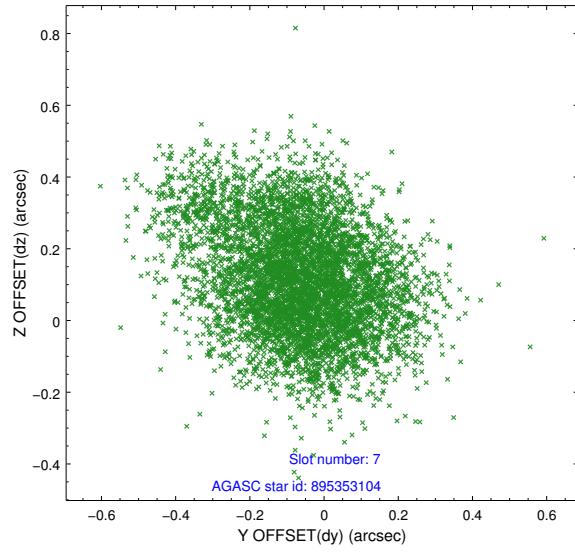
2.4.3 Slot 5



2.4.4 Slot 6

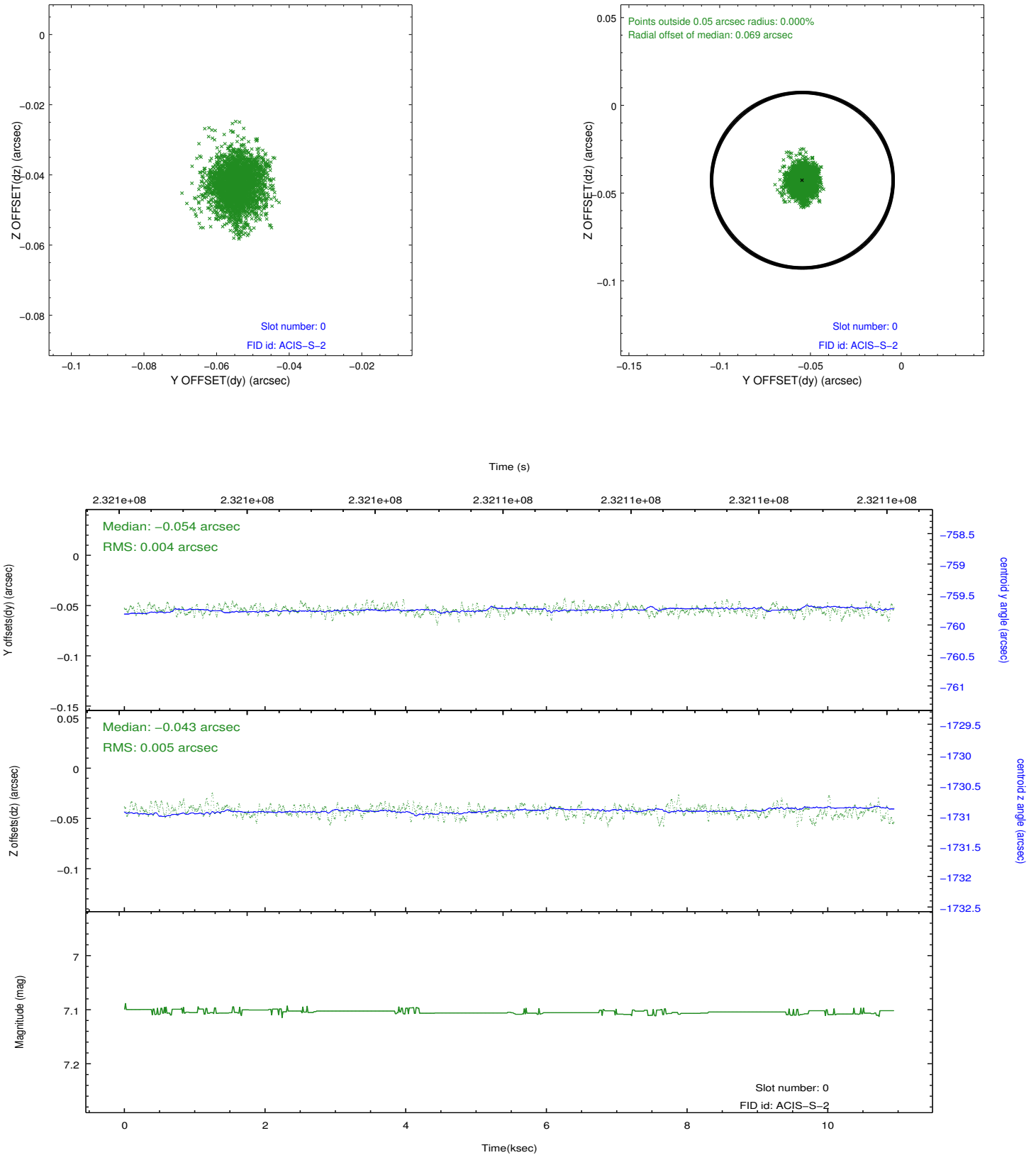


2.4.5 Slot 7

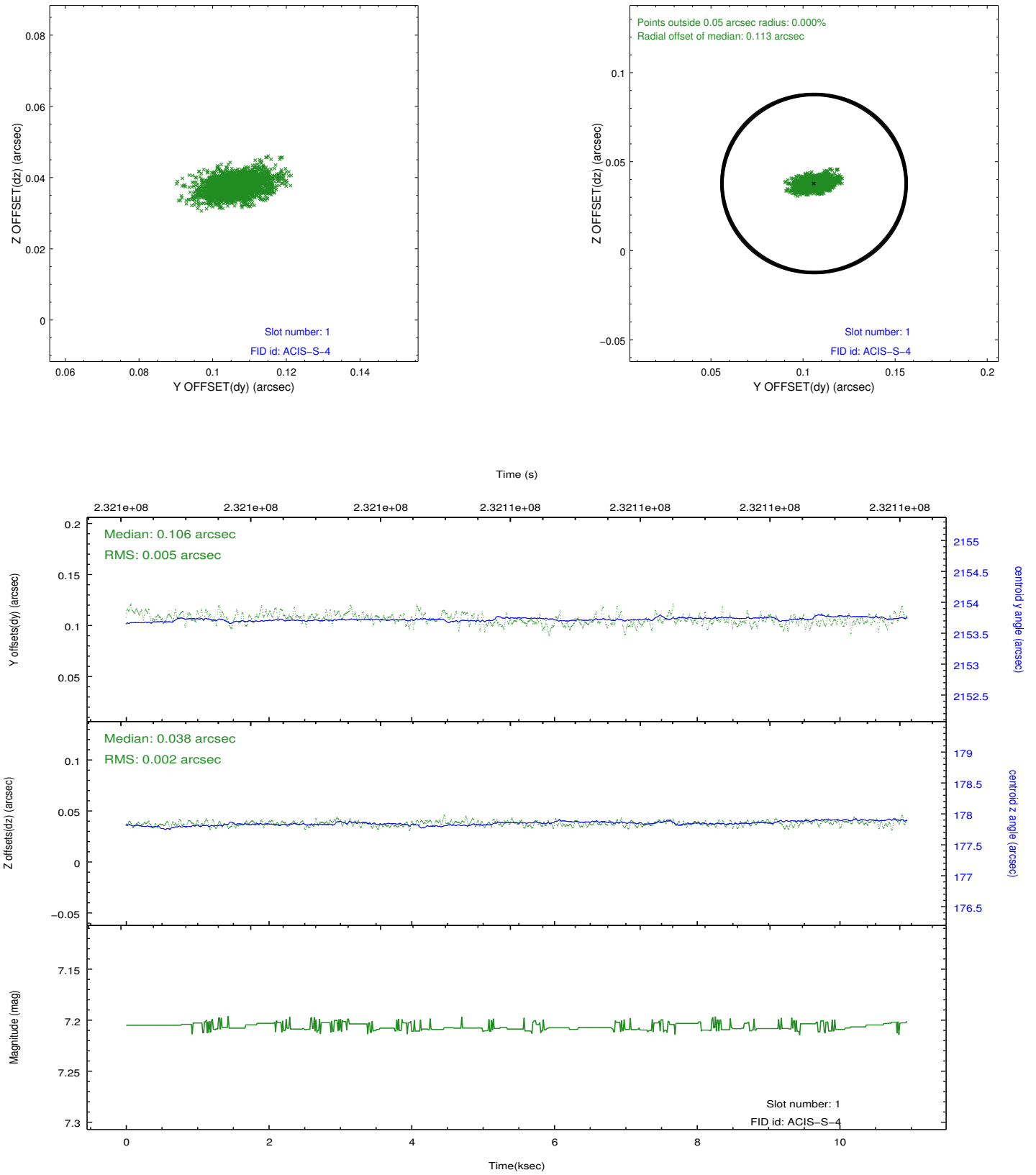


2.5 FID Slots

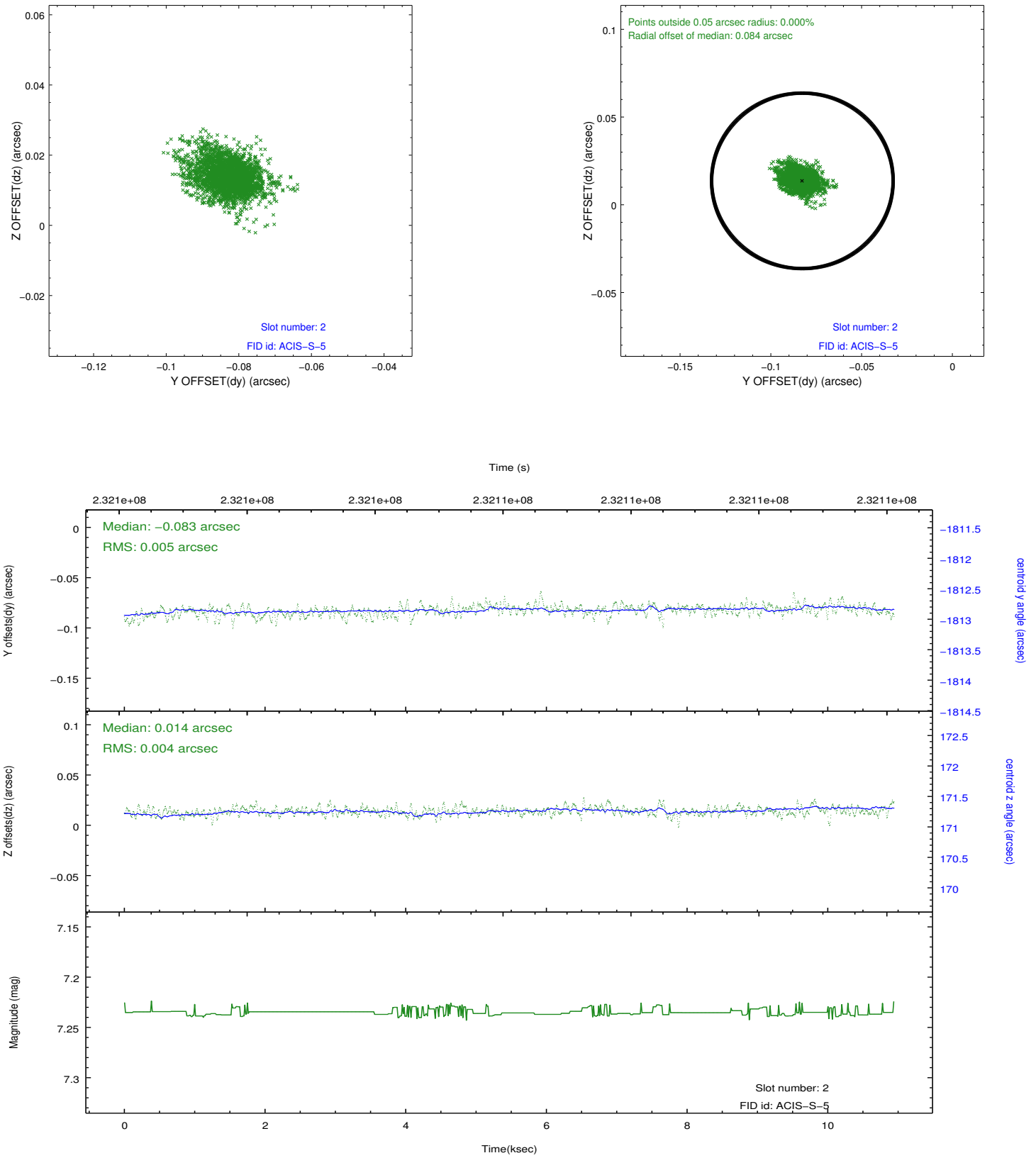
2.5.1 Slot 0



2.5.2 Slot 1



2.5.3 Slot 2



A Summary

A.1 Status

V&V Scientist	Beth Sundheim
V&V Date (YYYY-MM-DD)	2013.01.15
V&V Edition	1
V&V Disposition and Status	OK
V&V Charge Time	10.50879

A.2 Comments