

# V&V Reference Report

## L2 ASCDS Version : 7.6.7

Observation 6261 - L2 Version 002  
Chandra X-Ray Center

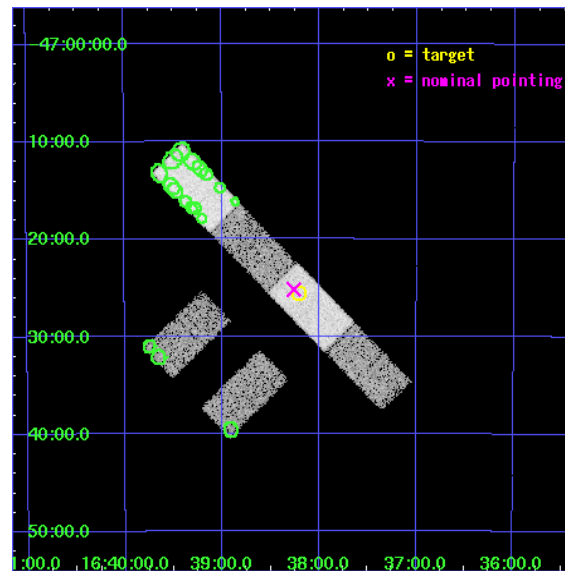
L2 Processing Date: Mar 3 2006

## Contents

<b>1</b>	<b>Front</b>	<b>2</b>
<b>2</b>	<b>OBI</b>	<b>3</b>
2.1	OBI . . . . .	3
2.1.1	Images . . . . .	3
2.1.2	Bias . . . . .	3
2.1.3	Parameters . . . . .	4
2.1.4	Events . . . . .	4
2.2	Compared Parameters . . . . .	5
2.3	Aspect . . . . .	6
2.4	Star Slots . . . . .	9
2.4.1	Slot 3 . . . . .	9
2.4.2	Slot 4 . . . . .	10
2.4.3	Slot 5 . . . . .	11
2.4.4	Slot 6 . . . . .	12
2.4.5	Slot 7 . . . . .	13
2.5	FID Slots . . . . .	14
2.5.1	Slot 0 . . . . .	14
2.5.2	Slot 1 . . . . .	15
2.5.3	Slot 2 . . . . .	16
<b>3</b>	<b>Point Sources</b>	<b>17</b>
<b>A</b>	<b>Summary</b>	<b>18</b>
A.1	Status . . . . .	18
A.2	Comments . . . . .	18

# 1 Front

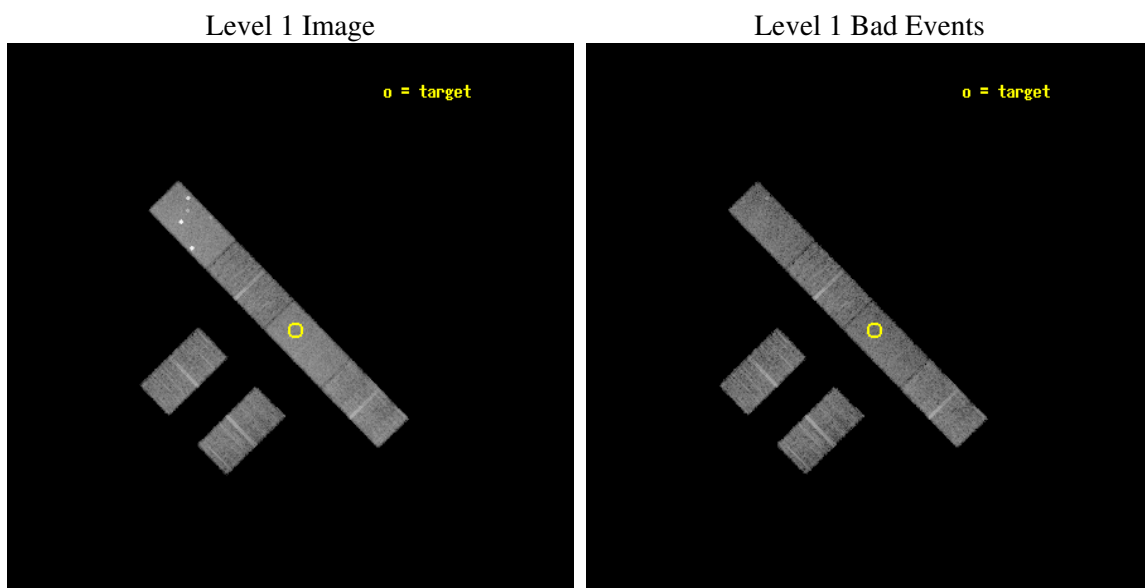
seq_num	400468
obs_id	6261
title	Periastron Observations of a Massive Eclipsing Pulsar Binary System
observer	Dr Maura McLaughlin
object	J1638-4725
dtcycle	0
cycle	P
ra_targ	249.55375
dec_targ	-47.425528
ra_nom	249.56528931918
dec_nom	-47.419928856642
roll_nom	45.588457356959
revision	2
ontime	10180.800067425
livetime	9953.8522364341
ontime2	10180.800067425
ontime3	10177.117987454
ontime5	10180.800067425
ontime6	10180.800067425
ontime7	10180.800067425
ontime8	10180.800067425
l2events	66193



## 2 OBI

### 2.1 OBI

#### 2.1.1 Images

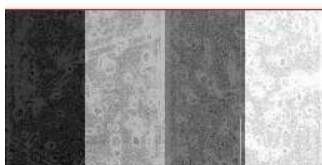


#### 2.1.2 Bias

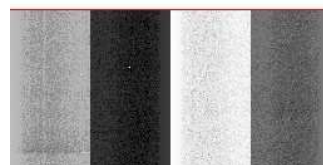
Chip 2



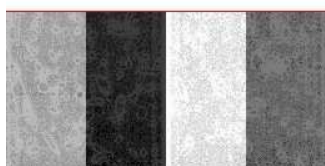
Chip 3



Chip 5



Chip 6



Chip 7



Chip 8



### 2.1.3 Parameters

obi_num	0
ascdsver	7.6.7
caldbver	3.2.1
date	2006-03-03T06:28:41
revision	2

sched_exp_time	10000.000000
ontime	10201.113744676
ontime2	10201.113744676
ontime3	10197.431664705
ontime5	10201.113744676
ontime6	10201.113744676
ontime7	10201.113744676
ontime8	10201.113744676
l1events	308561

### 2.1.4 Events

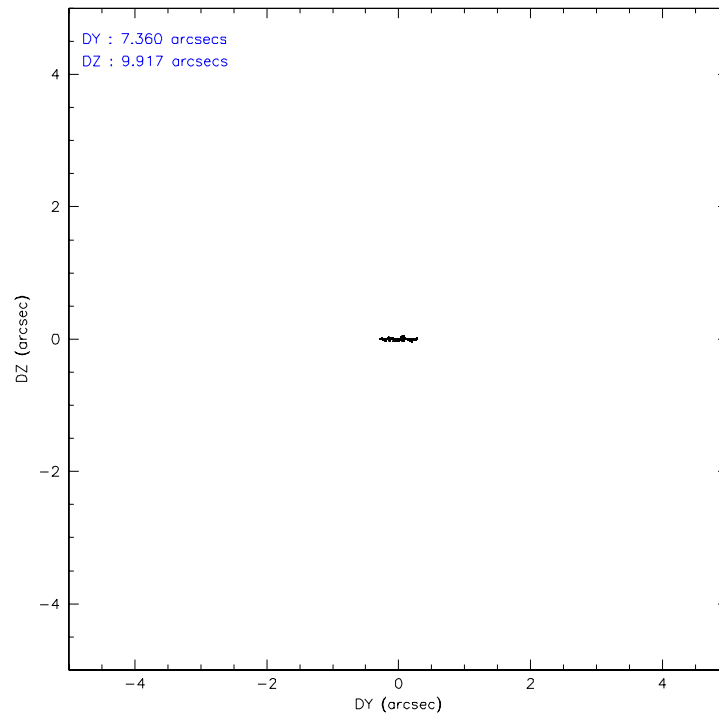
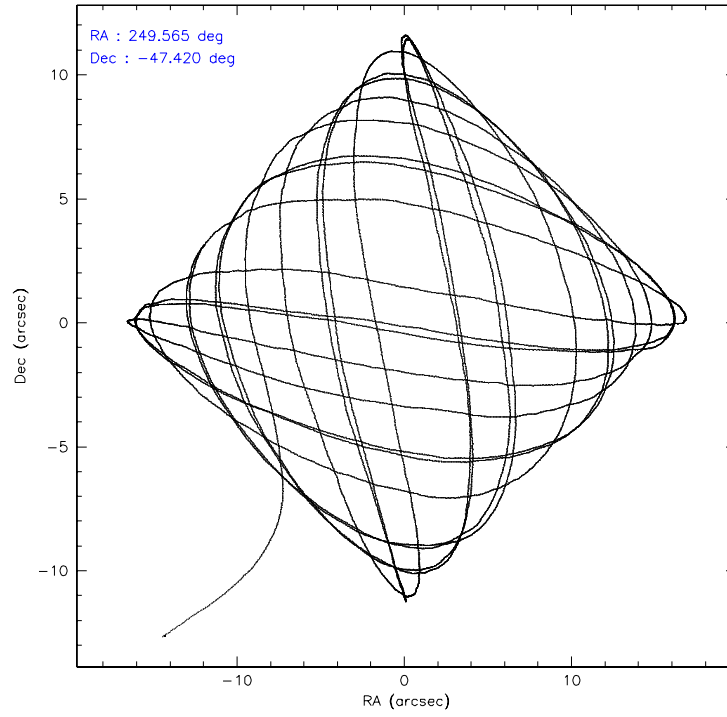
	ccd 2	ccd 3	ccd 5	ccd 6	ccd 7	ccd 8
level 1 events	44096	41789	70652	43201	54941	53882
rejected events	38584	36733	33657	37623	32949	42374
rejected %	87%	87%	47%	87%	59%	78%

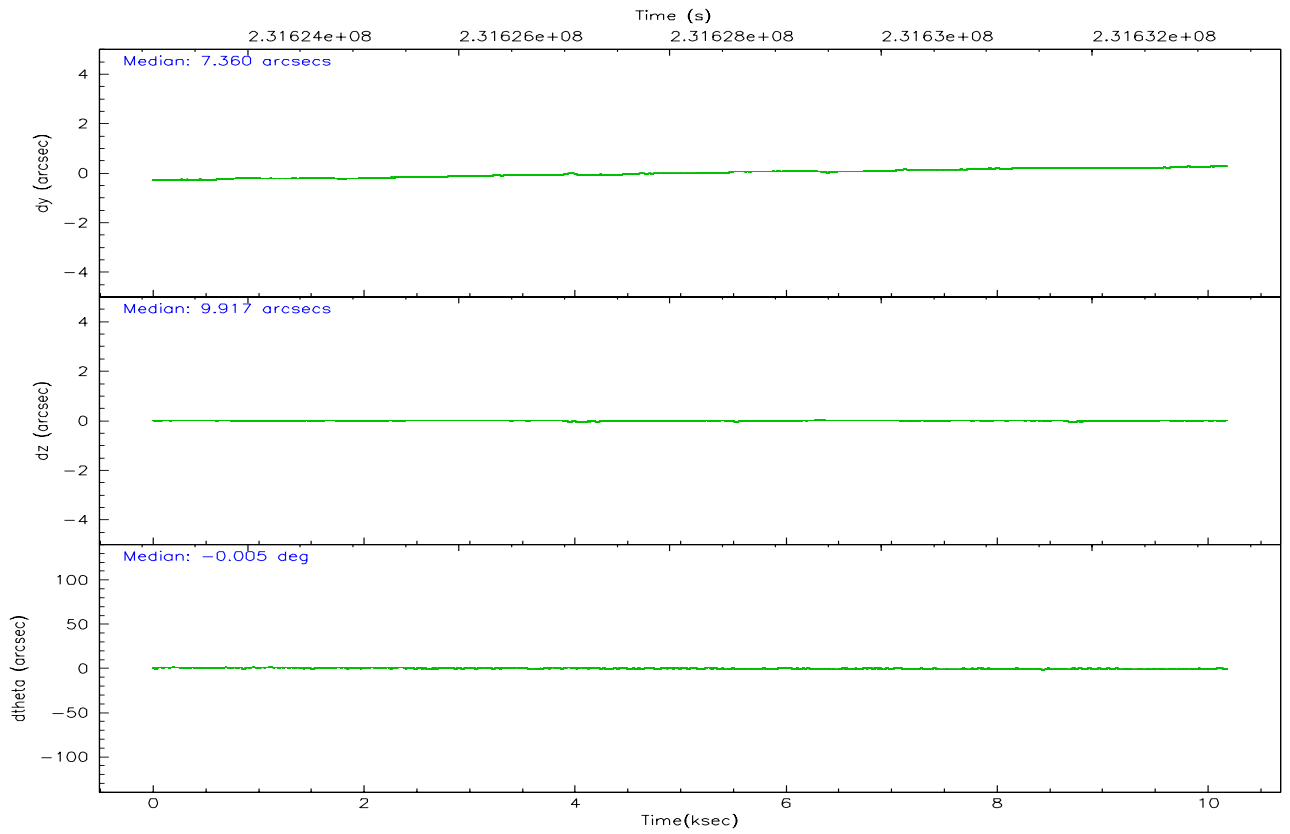
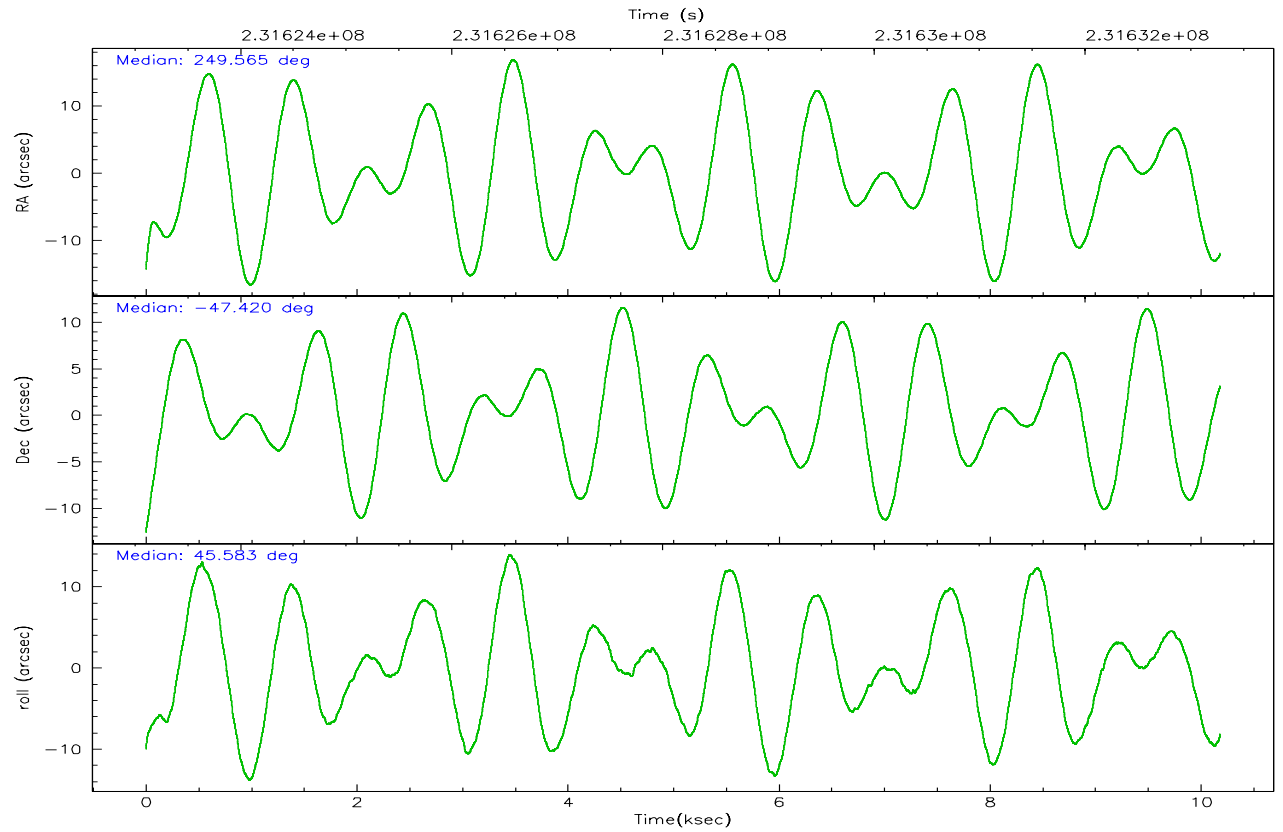
	ccd 2	ccd 3	ccd 5	ccd 6	ccd 7	ccd 8
grade 0 events	2367	2228	11680	2336	1329	3714
	5%	5%	16%	5%	2%	6%
grade 1 events	17	19	203	21	35	26
	0%	0%	0%	0%	0%	0%
grade 2 events	1107	877	8692	1039	5512	2510
	2%	2%	12%	2%	10%	4%
grade 3 events	598	581	699	606	1327	1258
	1%	1%	0%	1%	2%	2%
grade 4 events	594	539	651	608	1300	1166
	1%	1%	0%	1%	2%	2%
grade 5 events	1648	1698	3037	1897	3677	2424
	3%	4%	4%	4%	6%	4%
grade 6 events	859	841	15344	1003	12566	2879
	1%	2%	21%	2%	22%	5%
grade 7 events	36906	35006	30346	35691	29195	39905
	83%	83%	42%	82%	53%	74%

## 2.2 Compared Parameters

Parameter	Planned	Actual	Parameter	Planned	Actual
Instrument	ACIS	ACIS	Obspar format version number	6	6
Detector	ACIS-235678	ACIS-235678	Obspar file type	PREDICTED	ACTUAL
Grating	NONE	NONE	Obspar update status	NONE	UPDATED
Data mode	FAINT	FAINT	On-chip summing requested	N	N
Observation mode	POINTING	POINTING	Subarray requested	1/2	1/2
Pointing RA	249.555898	249.5652893191777	Subarray start row	0	257
Pointing Dec	-47.446384	-47.41992885664173	Subarray row count	1024	512
Pointing Roll	45.424910	45.58845735695928	Alternating exposures requested	N	N
SIM focus pos (mm)	-0.684267	-0.6828225247311905	Primary exposure time	0.000000	1.8
SIM defocus (mm)	0	0.001444936568705701			
SIM translation stage pos (mm)	-190.132523	-190.1400660498719			
SIM translation stage offset (mm)	0	0.00754346686406393			
Observation start time	231623286.184000	231622426.79662			
Observation start date	2005-05-04T19:47:02	2005-05-04T19:33:46			
Observation end time	231633286.184000	231634684.25967			
Observation end date	2005-05-04T22:33:42	2005-05-04T22:58:04			
Read mode	TIMED	TIMED			

## 2.3 Aspect





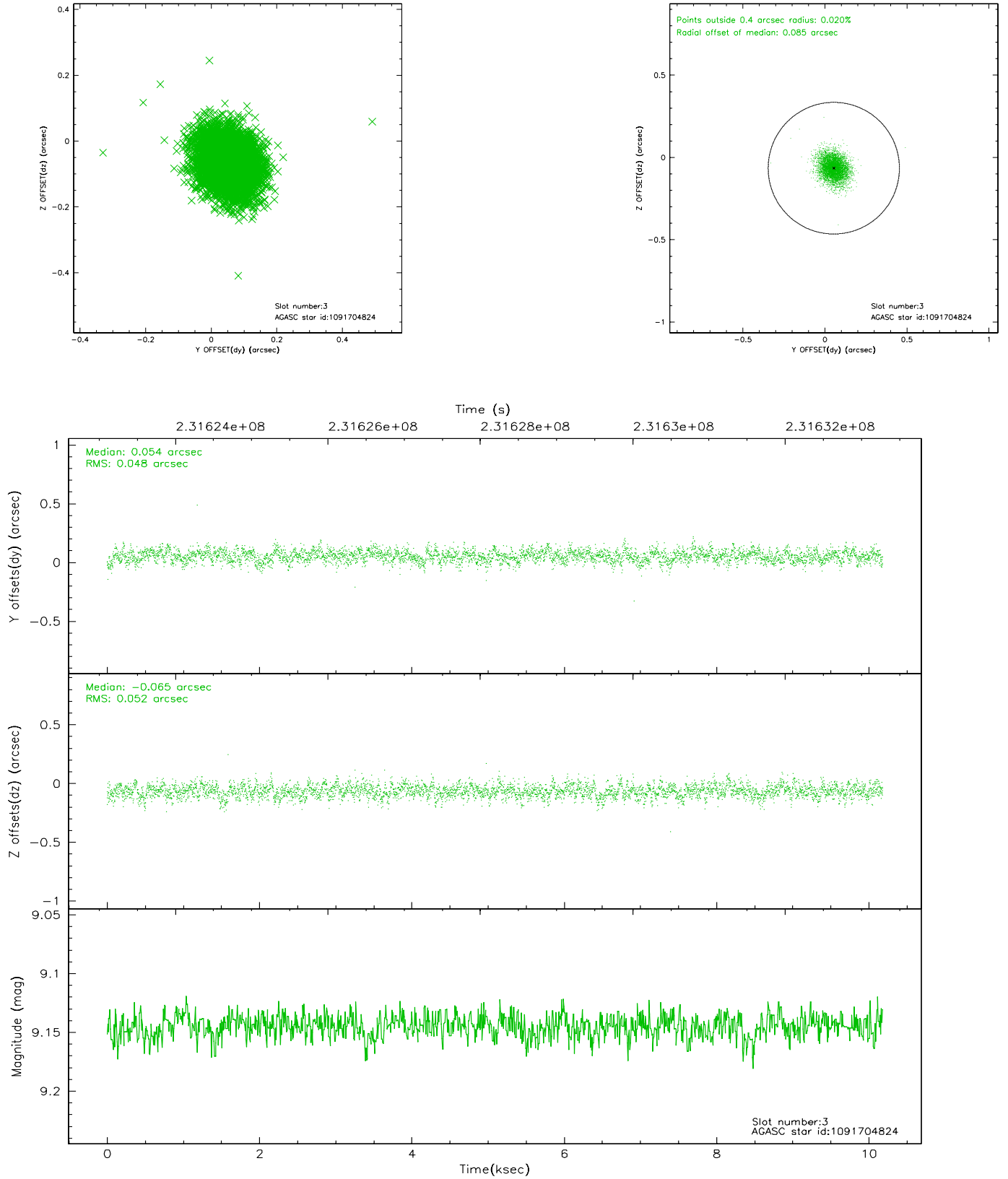
### Slot Statistics

slot	status	id	mag	n_pts	med_dy	med_dz	dr1	dr2	ra	dec	mean_y	mean_z
0	FID	ACIS-S-2	7.11	2484	-0.034	-0.003	0.007	0.012	0.000000	0.000000	-760.12	-1731.18
1	FID	ACIS-S-4	7.21	2484	0.050	0.017	0.007	0.013	0.000000	0.000000	2152.97	176.85
2	FID	ACIS-S-5	7.23	2484	-0.047	-0.006	0.009	0.015	0.000000	0.000000	-1812.35	171.00
3	GUIDE	1091704824	9.14	4960	0.054	-0.065	0.074	0.123	249.173141	-47.336759	-375.59	940.48
4	GUIDE	1091705016	7.81	4969	-0.137	0.157	0.054	0.088	249.888030	-47.558250	278.43	-858.22
5	GUIDE	1091706216	9.04	4967	0.074	-0.098	0.082	0.131	248.520013	-47.617493	-2214.64	1346.07
6	GUIDE	1091709408	9.21	4964	-0.030	-0.064	0.085	0.136	249.304466	-47.312562	-88.46	774.81
7	GUIDE	1091709768	7.71	4968	0.039	0.069	0.062	0.095	249.435228	-47.706899	-873.06	-450.10

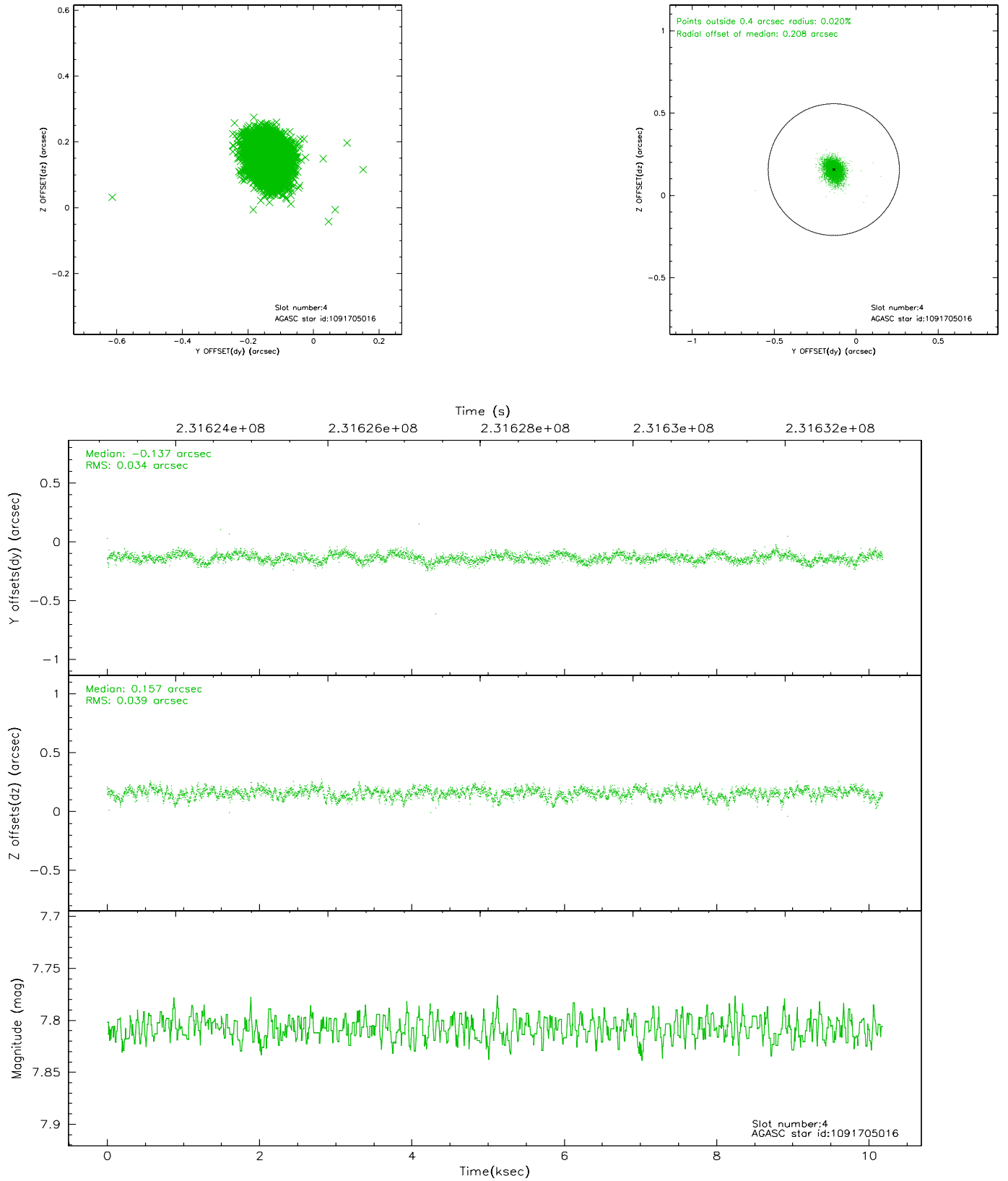


## 2.4 Star Slots

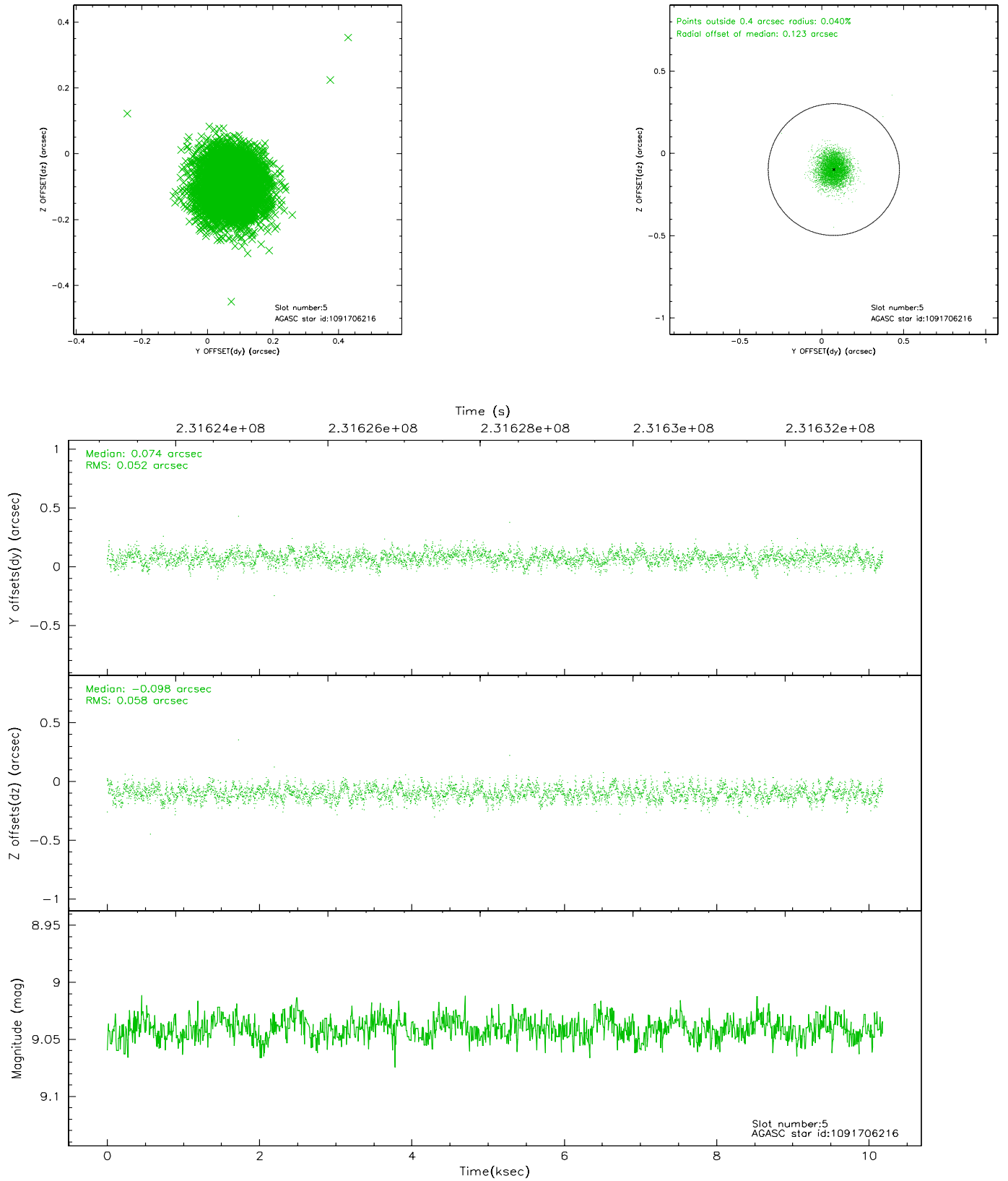
### 2.4.1 Slot 3



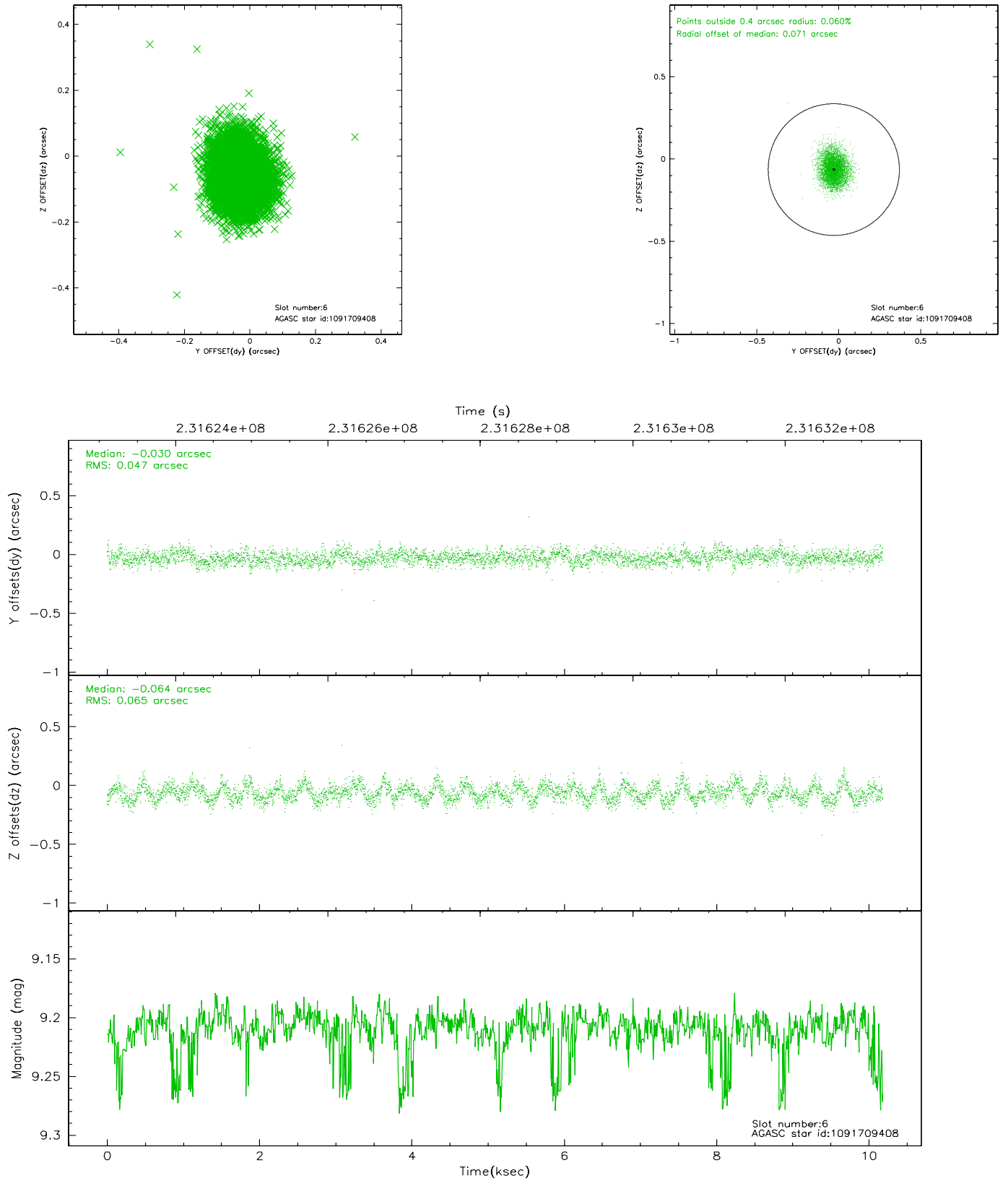
## 2.4.2 Slot 4



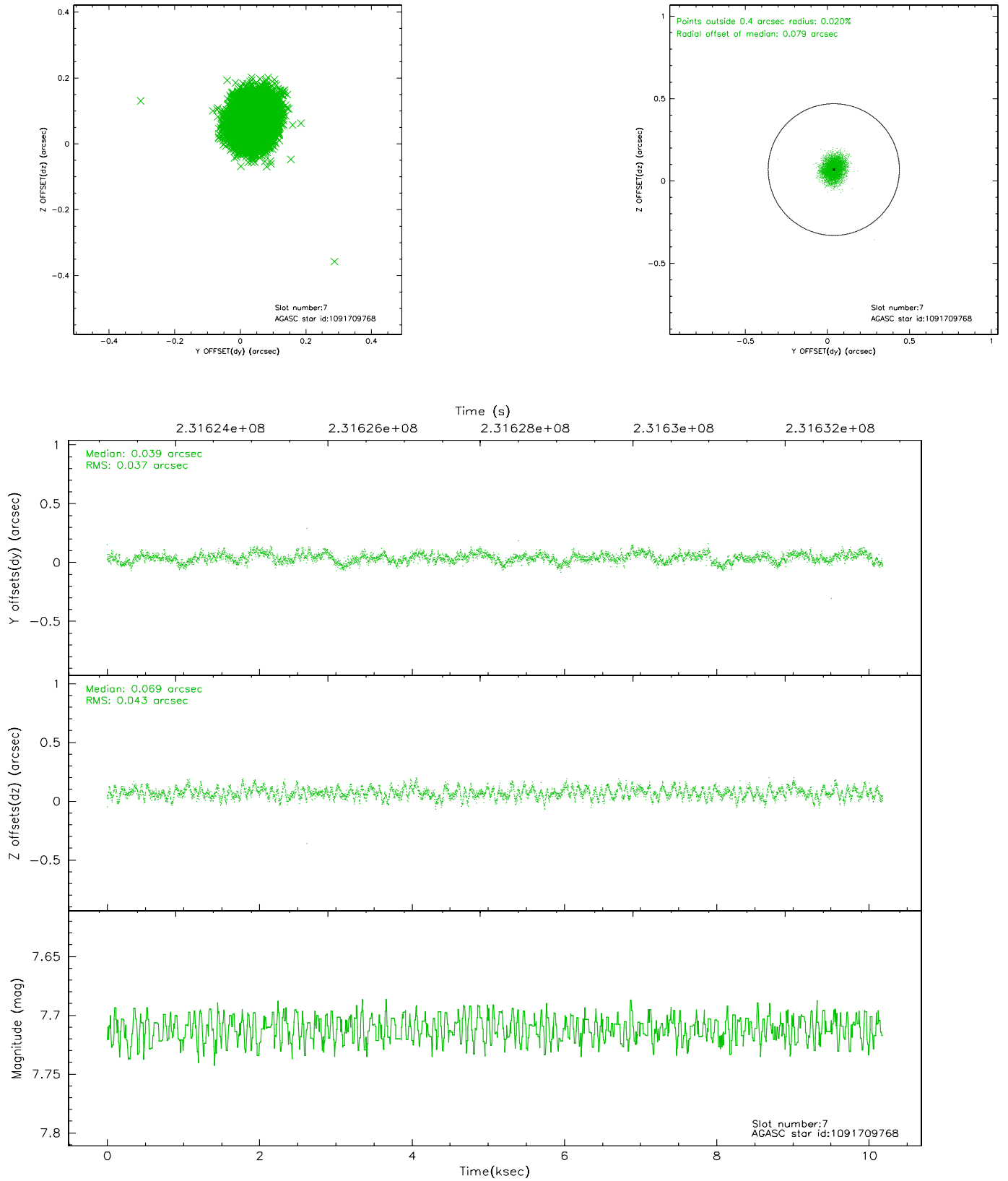
### 2.4.3 Slot 5



## 2.4.4 Slot 6

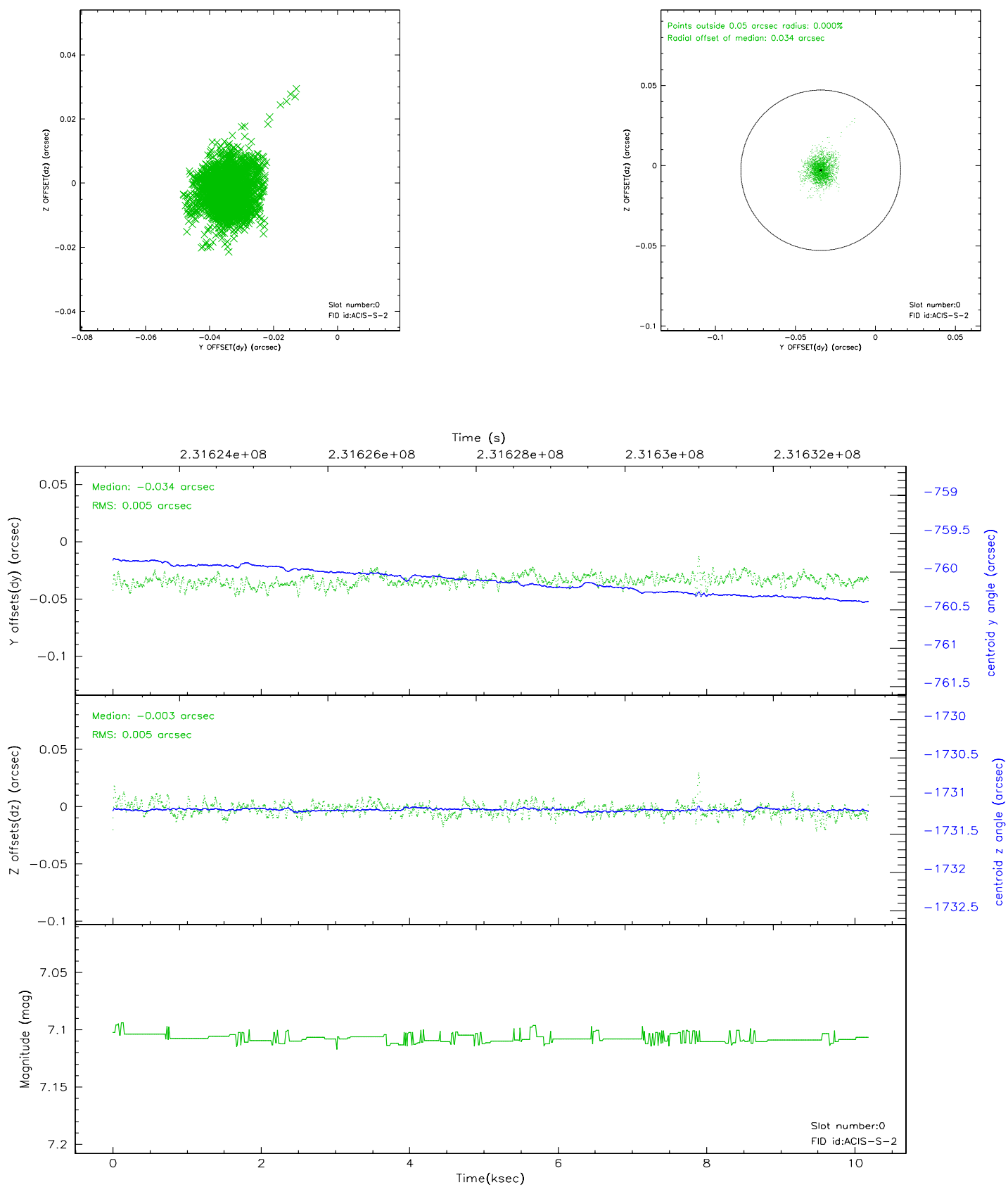


## 2.4.5 Slot 7

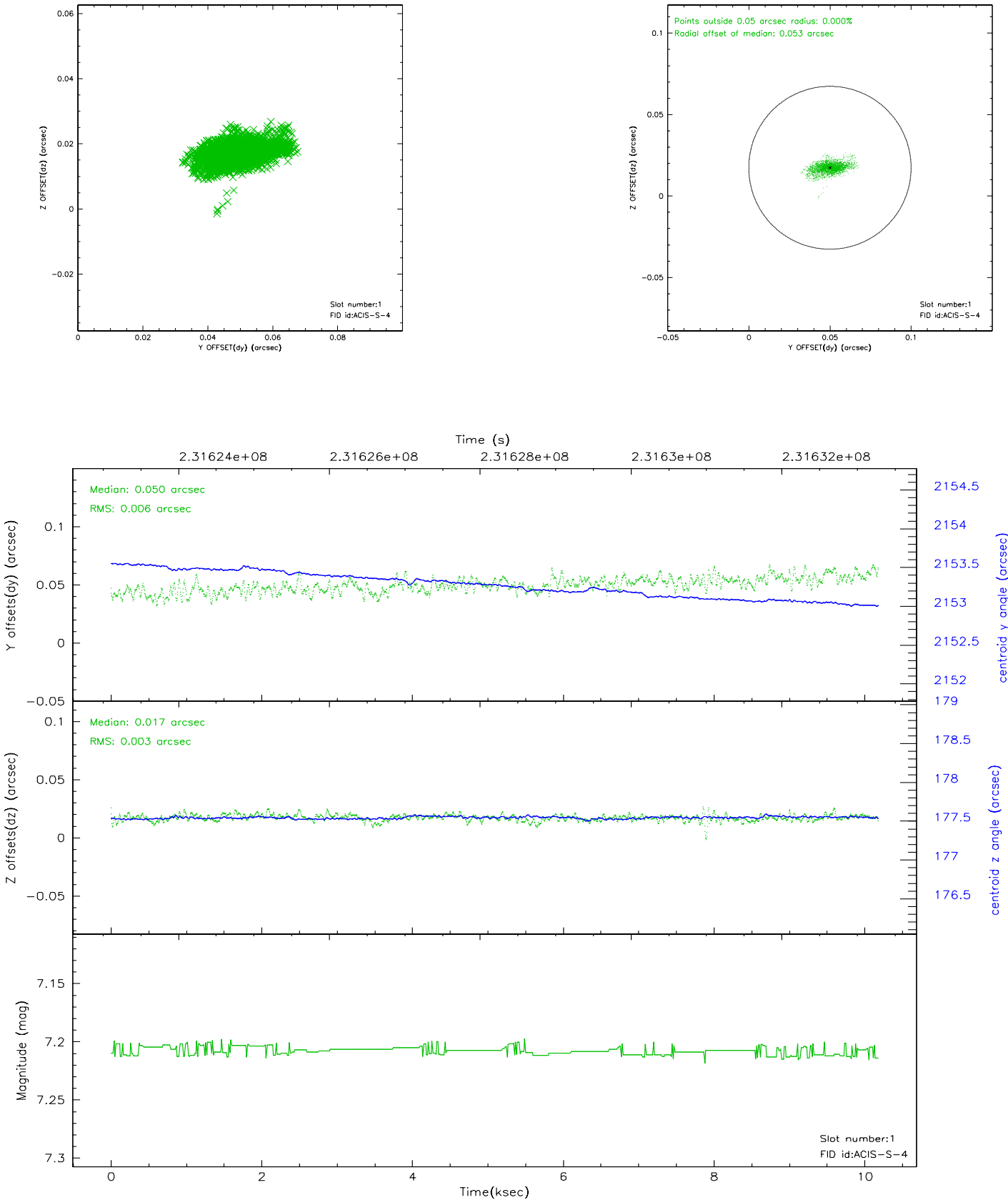


## 2.5 FID Slots

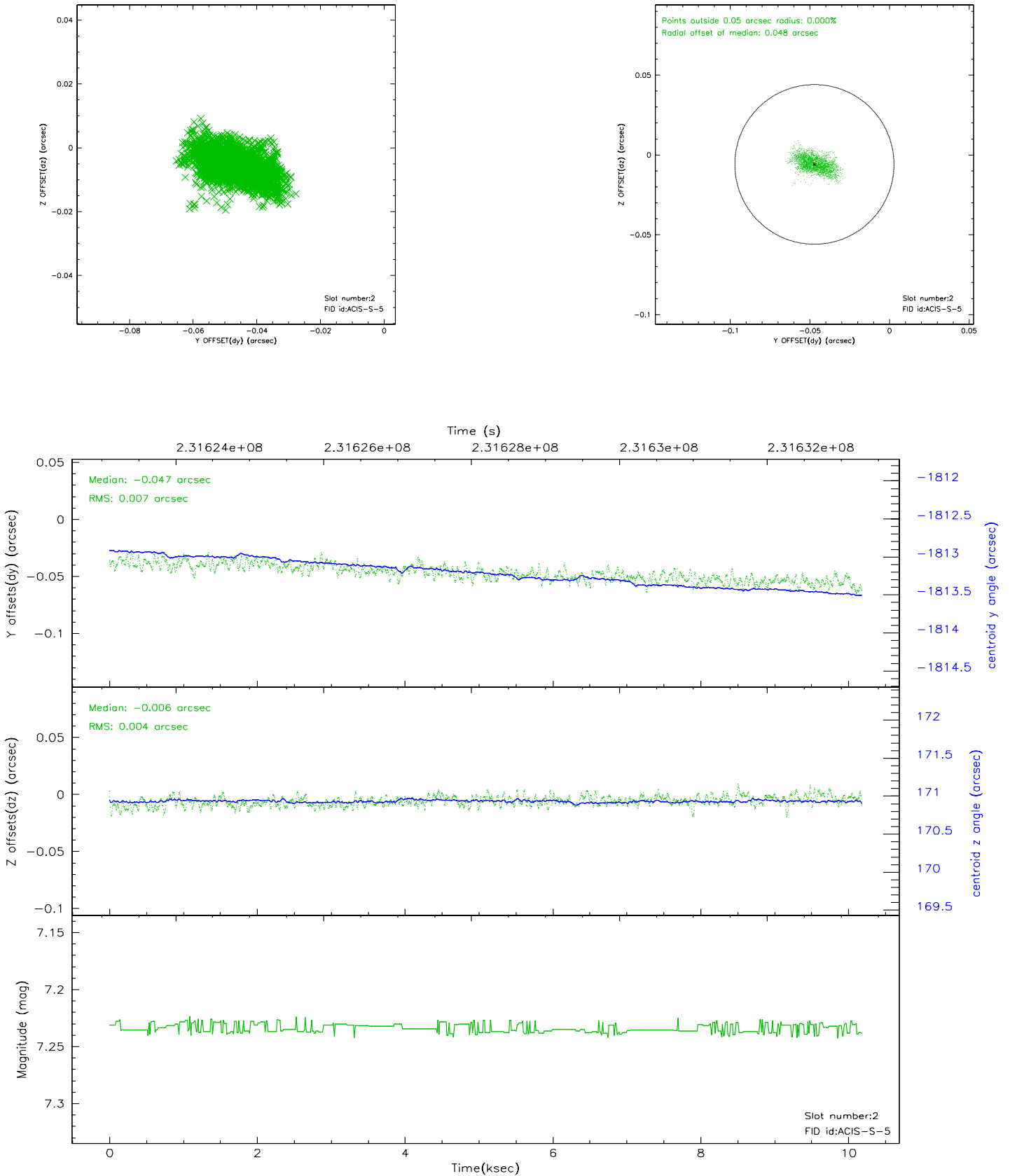
### 2.5.1 Slot 0



2.5.2 Slot 1

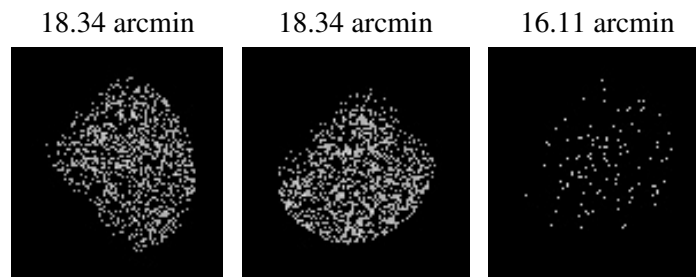


### 2.5.3 Slot 2





### 3 Point Sources



## A Summary

### A.1 Status

V&V Scientist	Beth Sundheim
V&V Date (YYYY-MM-DD)	2006.03.03
V&V Edition	1
V&V Disposition and Status	OK
V&V Charge Time	10.1808

### A.2 Comments