

V&V Reference Report

L2 ASCDS Version : 7.6.7.1

Observation 6200 - L2 Version 3
Chandra X-Ray Center

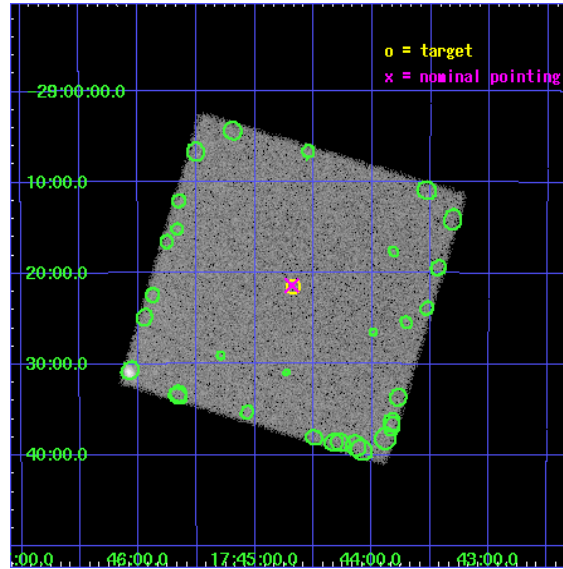
L2 Processing Date : Nov 24 2007

Contents

1	Front	2
2	OBI	3
2.1	OBI	3
2.1.1	Images	3
2.1.2	Parameters	4
2.1.3	Events	4
2.2	Compared Parameters	5
2.3	Aspect	6
2.4	Star Slots	9
2.4.1	Slot 3	9
2.4.2	Slot 4	10
2.4.3	Slot 5	11
2.4.4	Slot 6	12
2.4.5	Slot 7	13
2.5	FID Slots	14
2.5.1	Slot 0	14
2.5.2	Slot 1	15
2.5.3	Slot 2	16
3	Point Sources	17
A	Summary	18
A.1	Status	18
A.2	Comments	18

1 Front

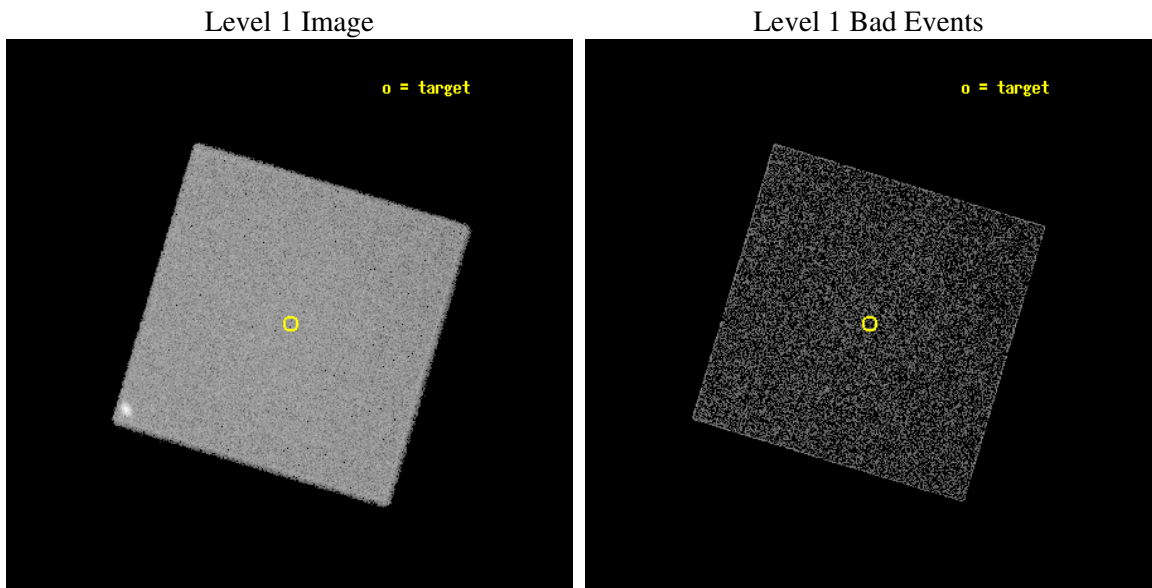
seq_num	400460
obs_id	6200
title	Monitoring observations of the Galactic Center region
observer	Dr. Rudy Wijnands
object	GC-10
ra_targ	266.1675
dec_targ	-29.358611
ra_nom	266.17122772751
dec_nom	-29.356168871733
roll_nom	61.759557381116
revision	3
ontime	5183.6814865172
livetime	5147.1774942452
l2events	196461



2 OBI

2.1 OBI

2.1.1 Images



2.1.2 Parameters

obi_num	0
ascdsver	7.6.11.2
caldbver	3.4.1
date	2007-11-24T14:40:57
revision	3

sched_exp_time	5000.000000
ontime	5183.6814865172
l1events	385980

2.1.3 Events

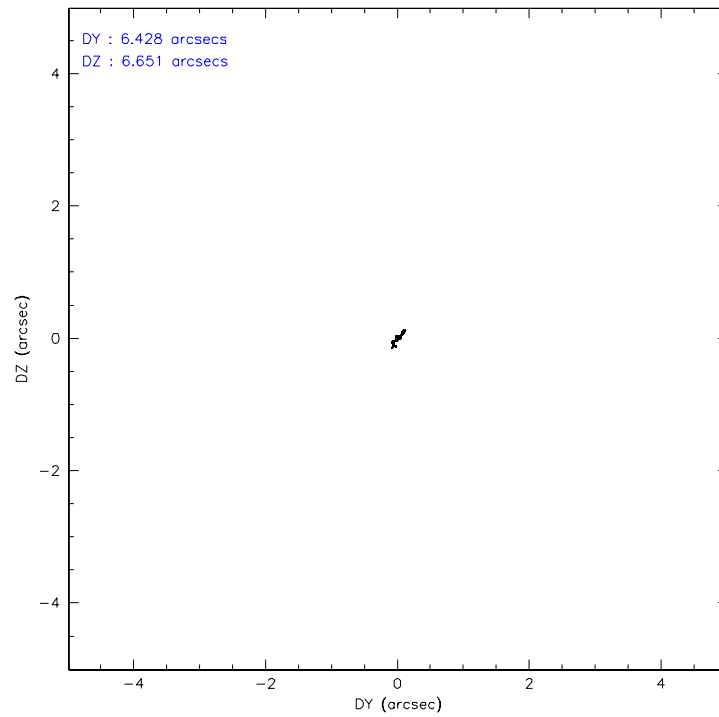
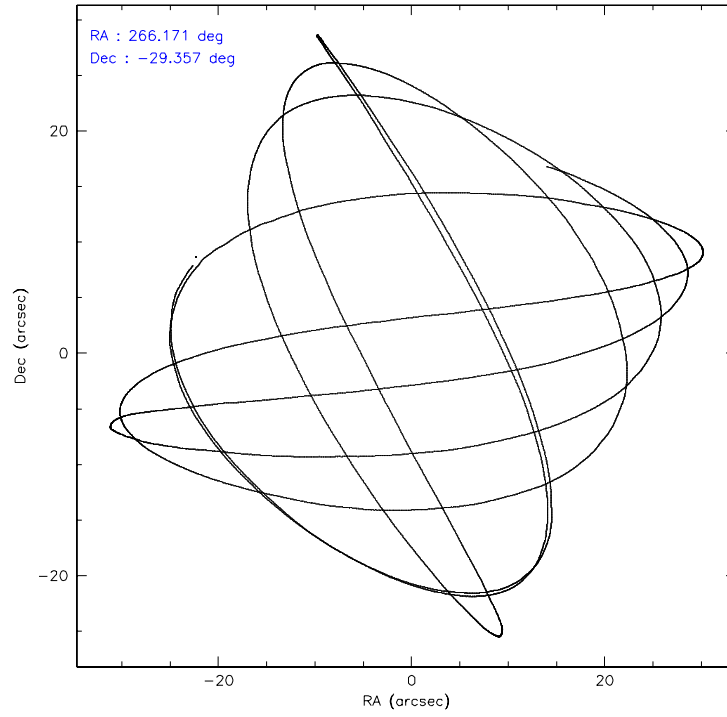
Level 1 Events

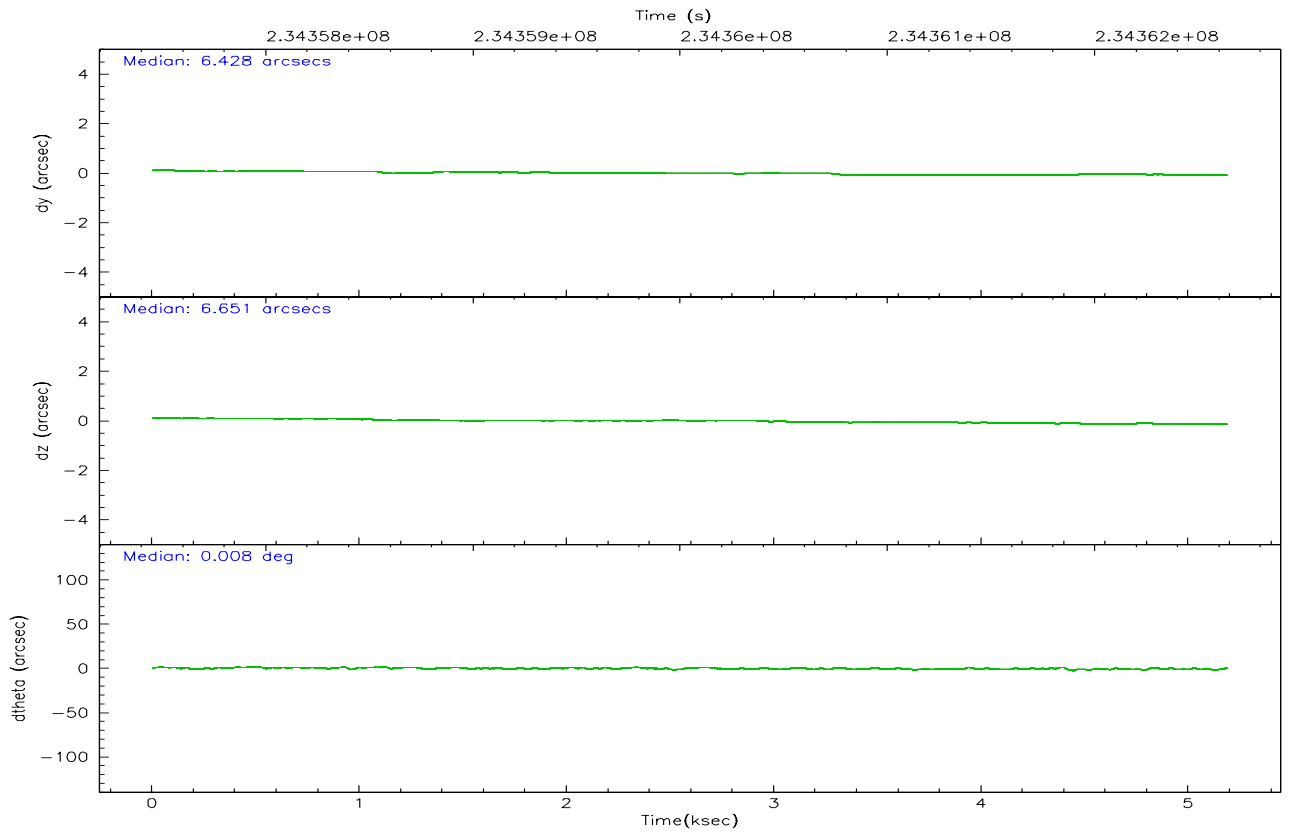
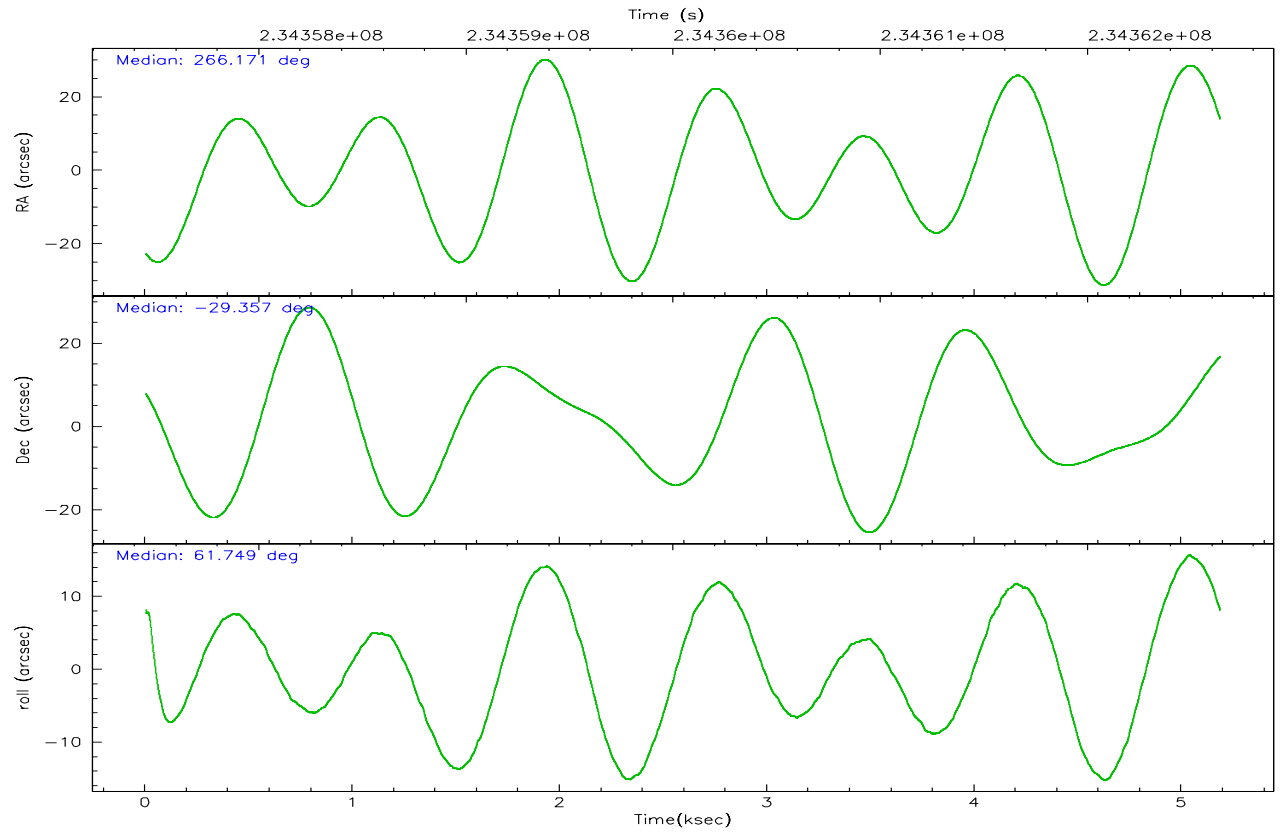
	segment 0
level 1 events	385980
rejected events	94368
rejected %	24%

2.2 Compared Parameters

Parameter	Planned	Actual	Parameter	Planned	Actual
Instrument	HRC	HRC	Obspar format version number	6	6
Detector	HRC-I	HRC-I	Obspar file type	PREDICTED	ACTUAL
Grating	NONE	NONE	Obspar update status	NONE	UPDATED
Data mode	OBSERVING	OBSERVING			
Observation mode	POINTING	POINTING			
Pointing RA	266.172883	266.1712277275091			
Pointing Dec	-29.383052	-29.35616887173298			
Pointing Roll	61.855853	61.75955738111597			
SIM focus pos (mm)	-1.040293	-1.038866356238299			
SIM defocus (mm)	0	0.001426264420575141			
SIM translation stage pos (mm)	126.985494	126.9829799899862			
SIM translation stage offset (mm)	0	0.002508901615314585			
Observation start time	234357645.184000	234357265.80874			
Observation start date	2005-06-05T11:19:41	2005-06-05T11:14:25			
Observation end time	234362645.184000	234364135.87155			
Observation end date	2005-06-05T12:43:01	2005-06-05T13:08:55			

2.3 Aspect



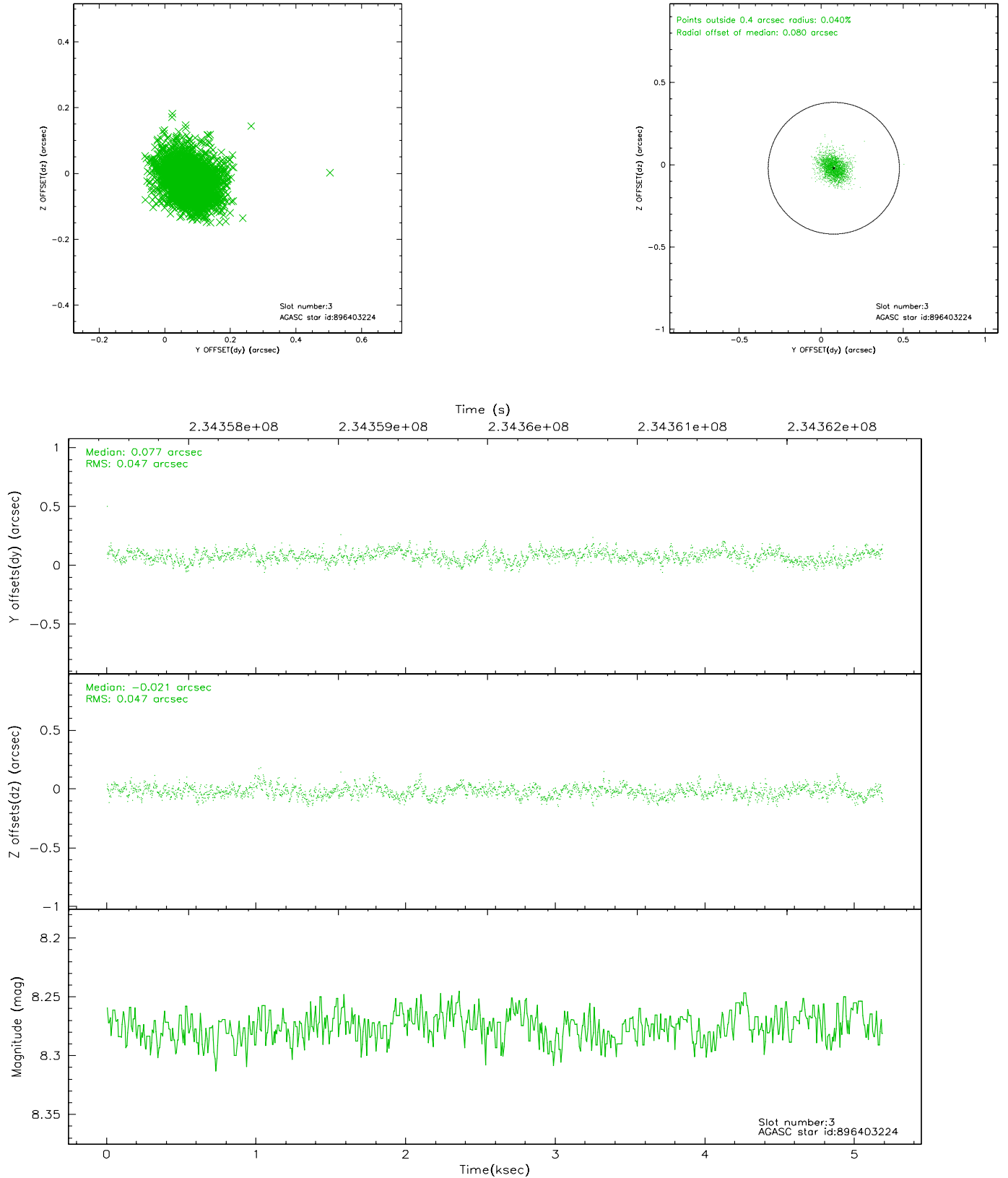


Slot Statistics

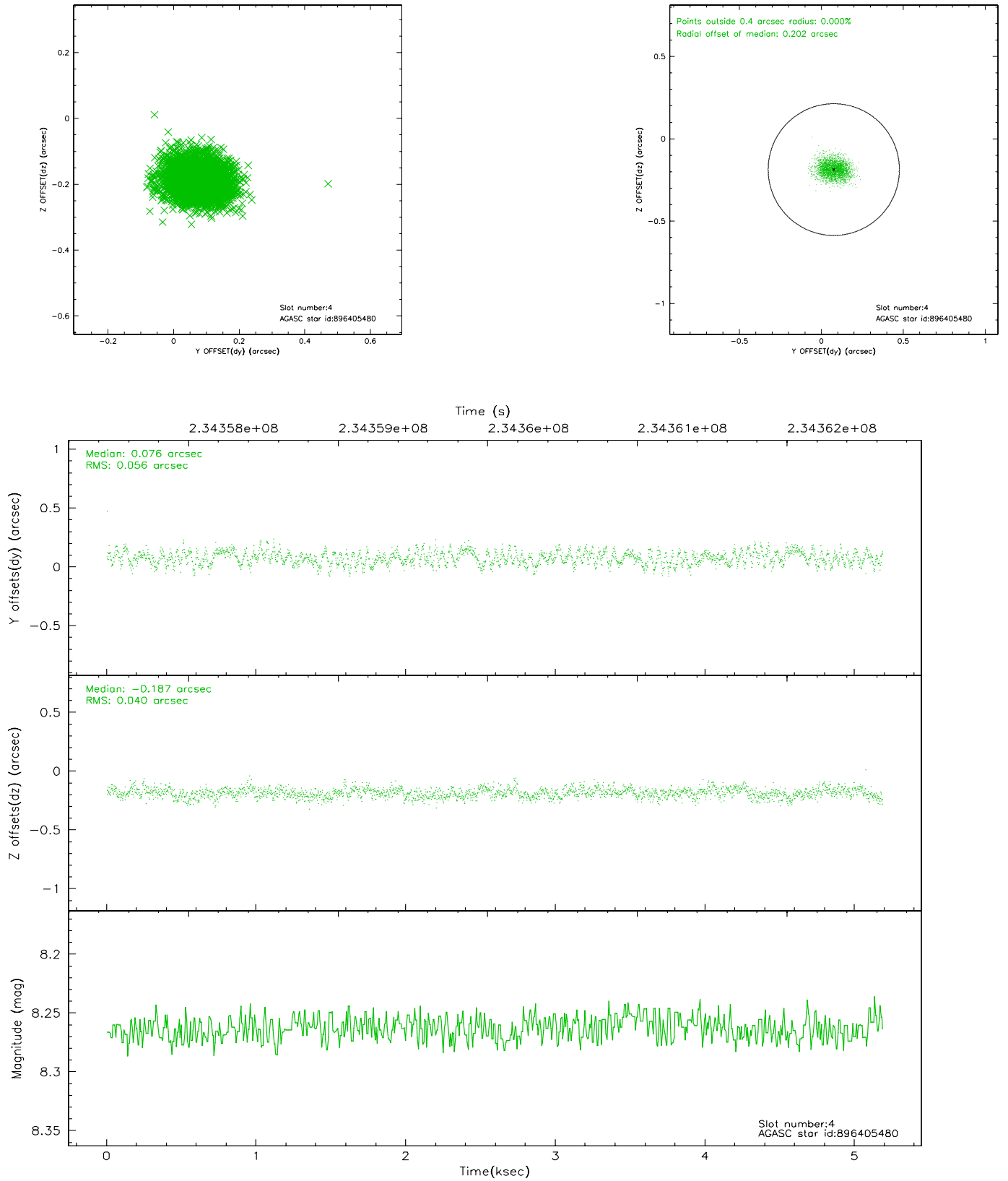
slot	status	id	mag	n_pts	med_dy	med_dz	dr1	dr2	ra	dec	mean_y	mean_z
0	FID	HRC-I-1	6.99	1265	0.006	-0.015	0.013	0.029	0.000000	0.000000	-761.98	-1294.50
1	FID	HRC-I-2	7.04	1265	0.105	-0.070	0.010	0.017	0.000000	0.000000	850.15	-1297.13
2	FID	HRC-I-3	7.08	1264	0.008	-0.006	0.009	0.018	0.000000	0.000000	-1189.82	1009.04
3	GUIDE	896403224	8.28	2530	0.077	-0.021	0.069	0.116	265.612825	-29.438915	-1008.88	1451.73
4	GUIDE	896405480	8.26	2530	0.076	-0.187	0.073	0.116	265.220460	-29.599691	-2104.79	2255.81
5	GUIDE	896541168	8.15	2530	0.024	0.018	0.064	0.104	266.319970	-29.850801	-1268.44	-1198.07
6	GUIDE	896541360	7.72	2530	-0.076	0.083	0.053	0.089	266.684478	-29.453744	529.36	-1535.47
7	GUIDE	896533888	7.03	2529	-0.102	0.110	0.054	0.084	266.666434	-29.392757	697.59	-1382.82

2.4 Star Slots

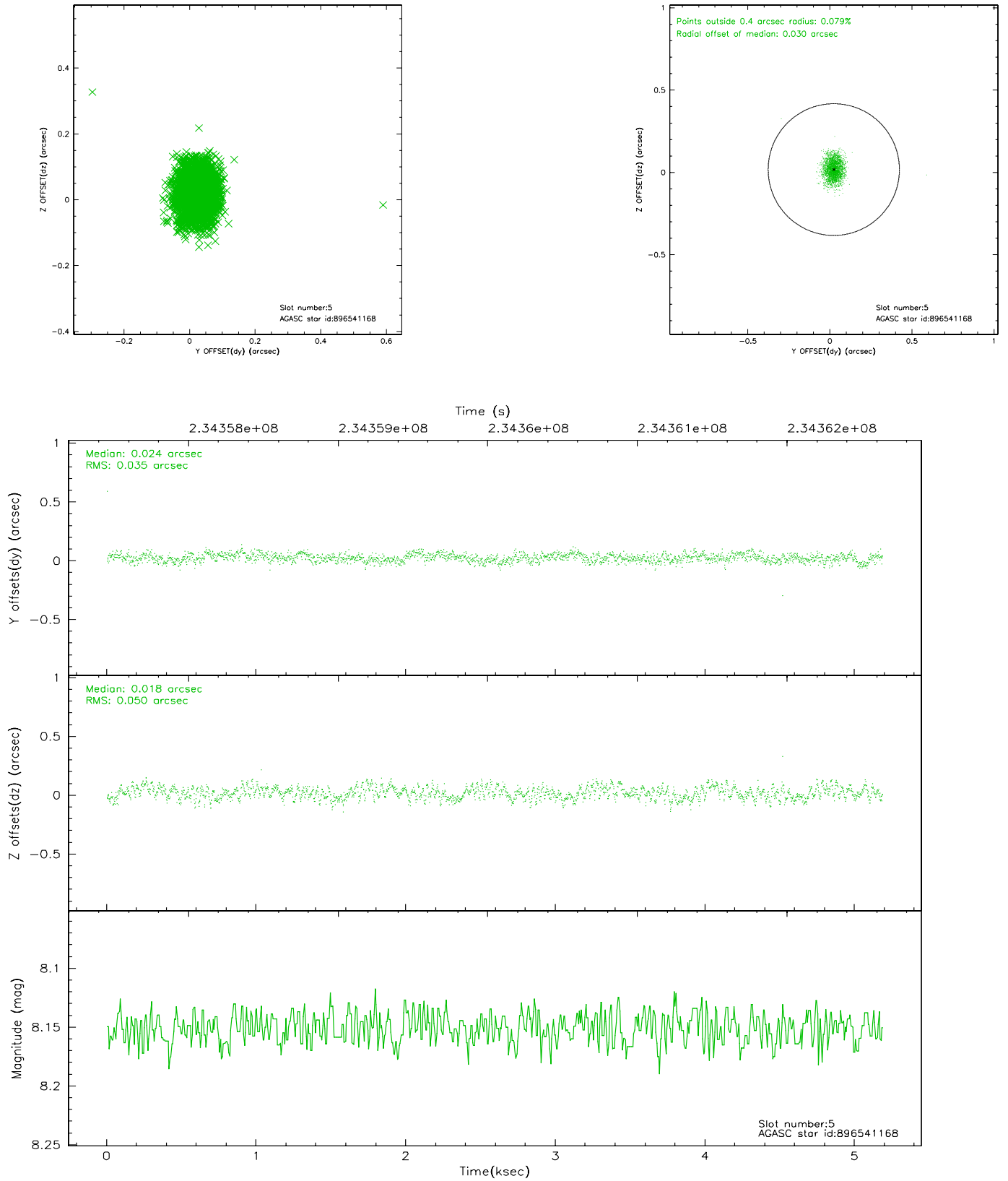
2.4.1 Slot 3



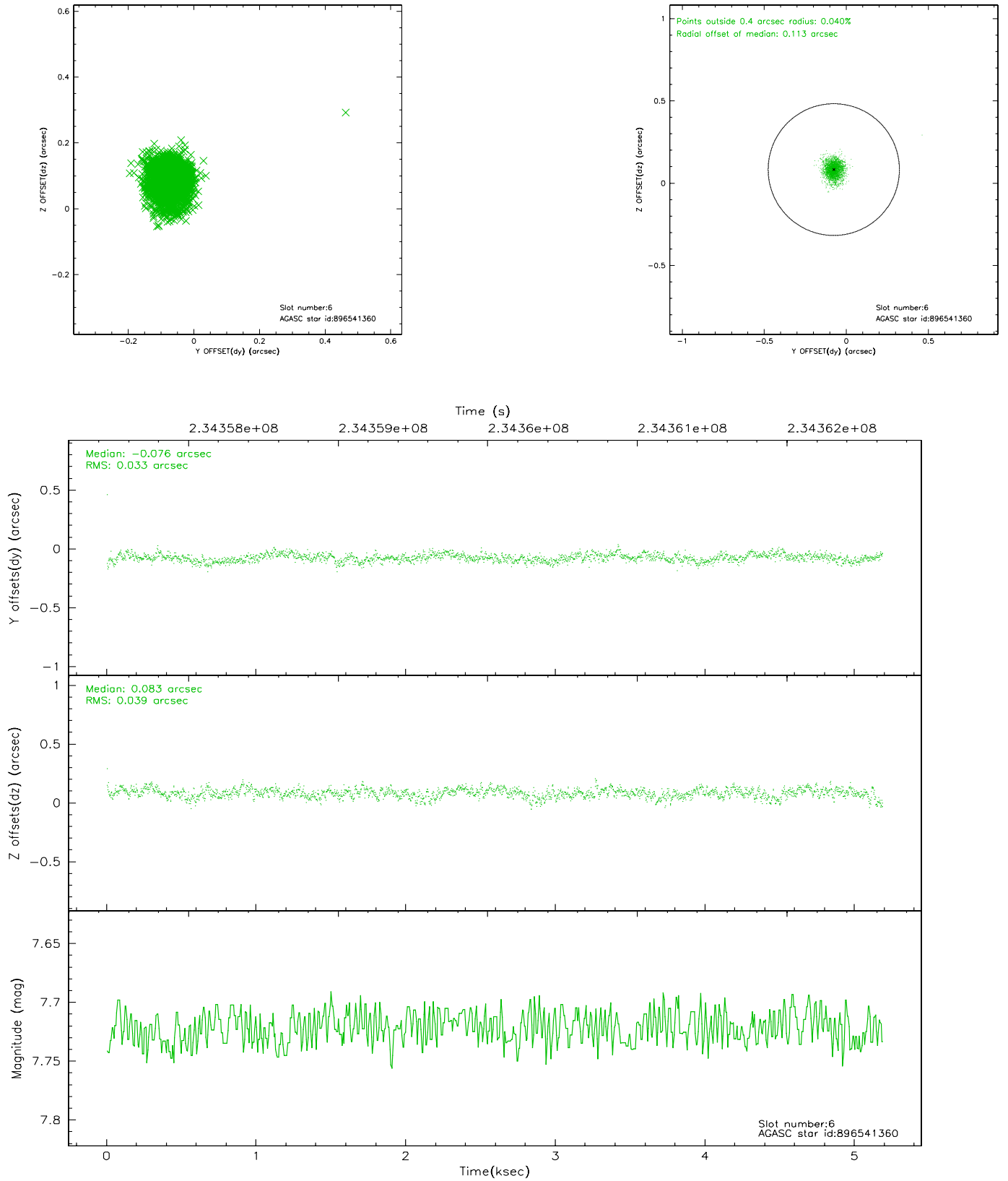
2.4.2 Slot 4



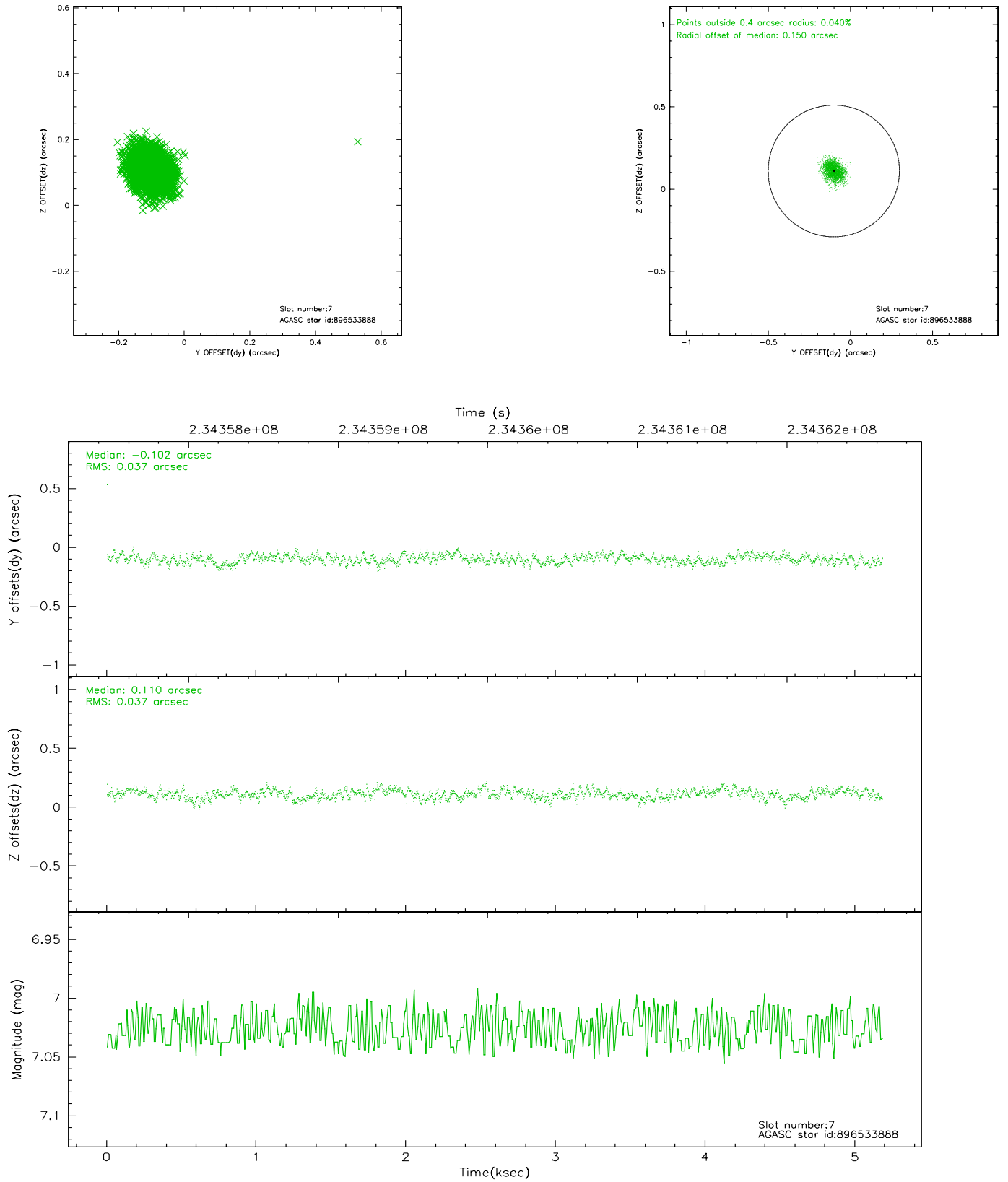
2.4.3 Slot 5



2.4.4 Slot 6

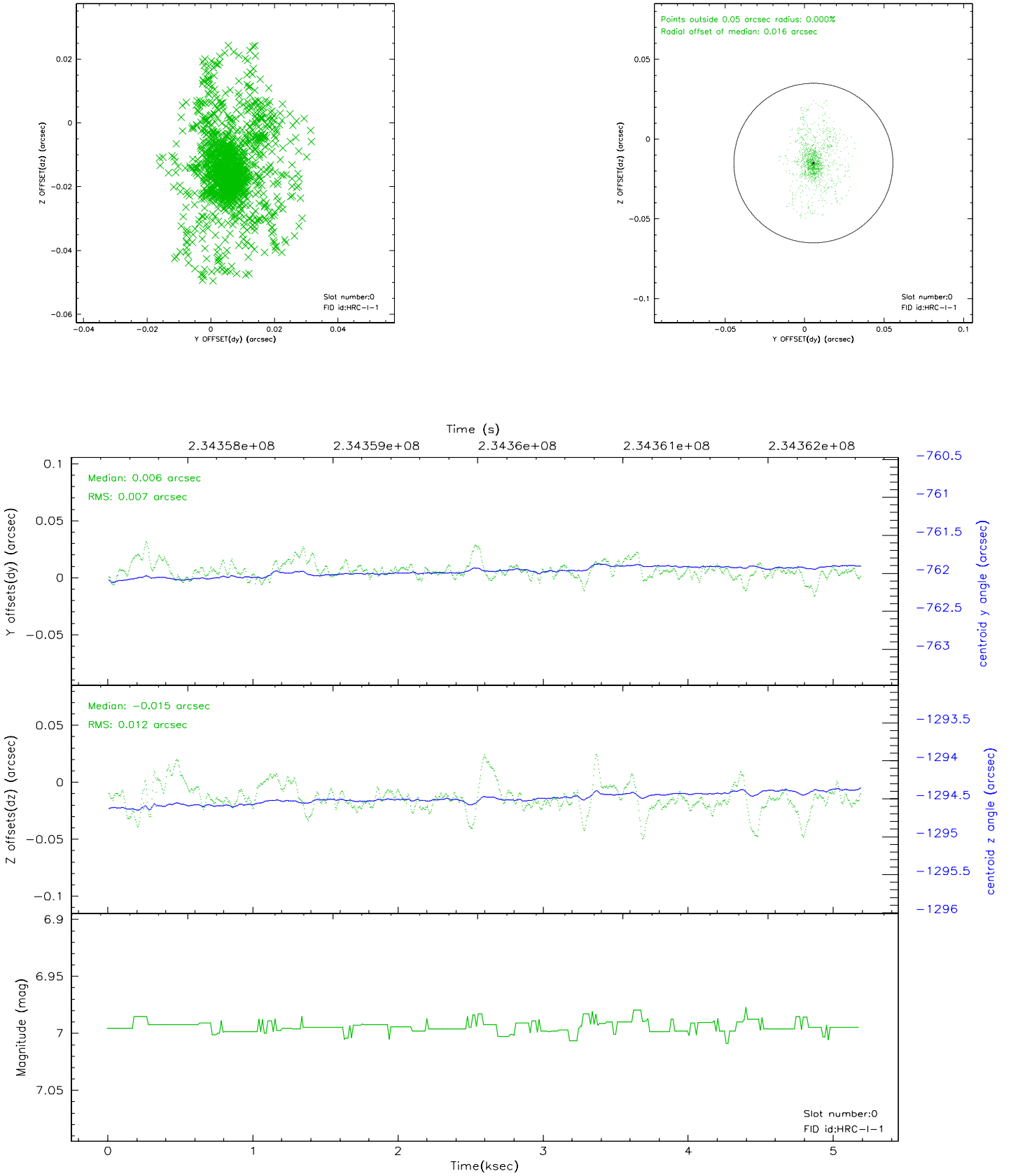


2.4.5 Slot 7

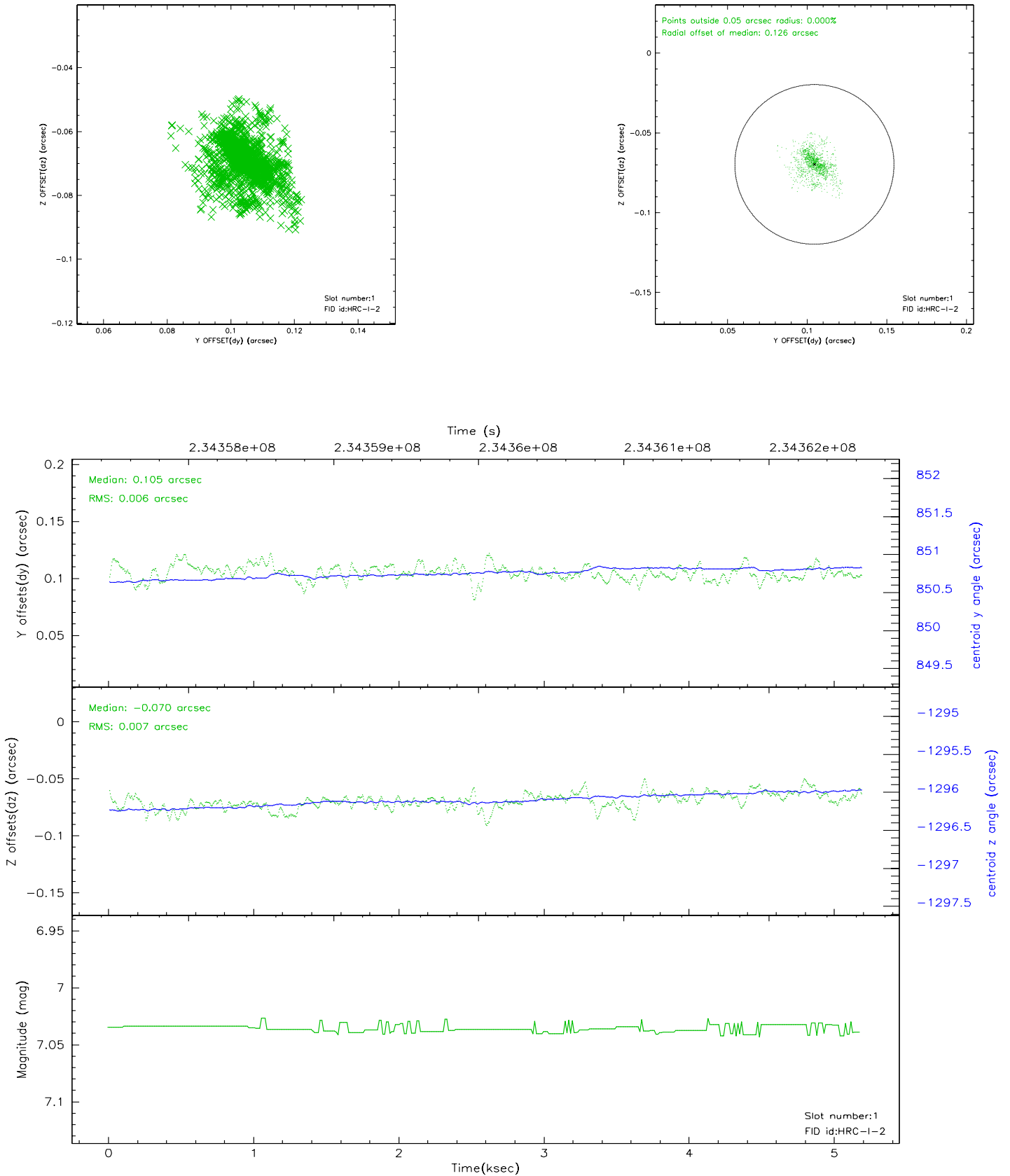


2.5 FID Slots

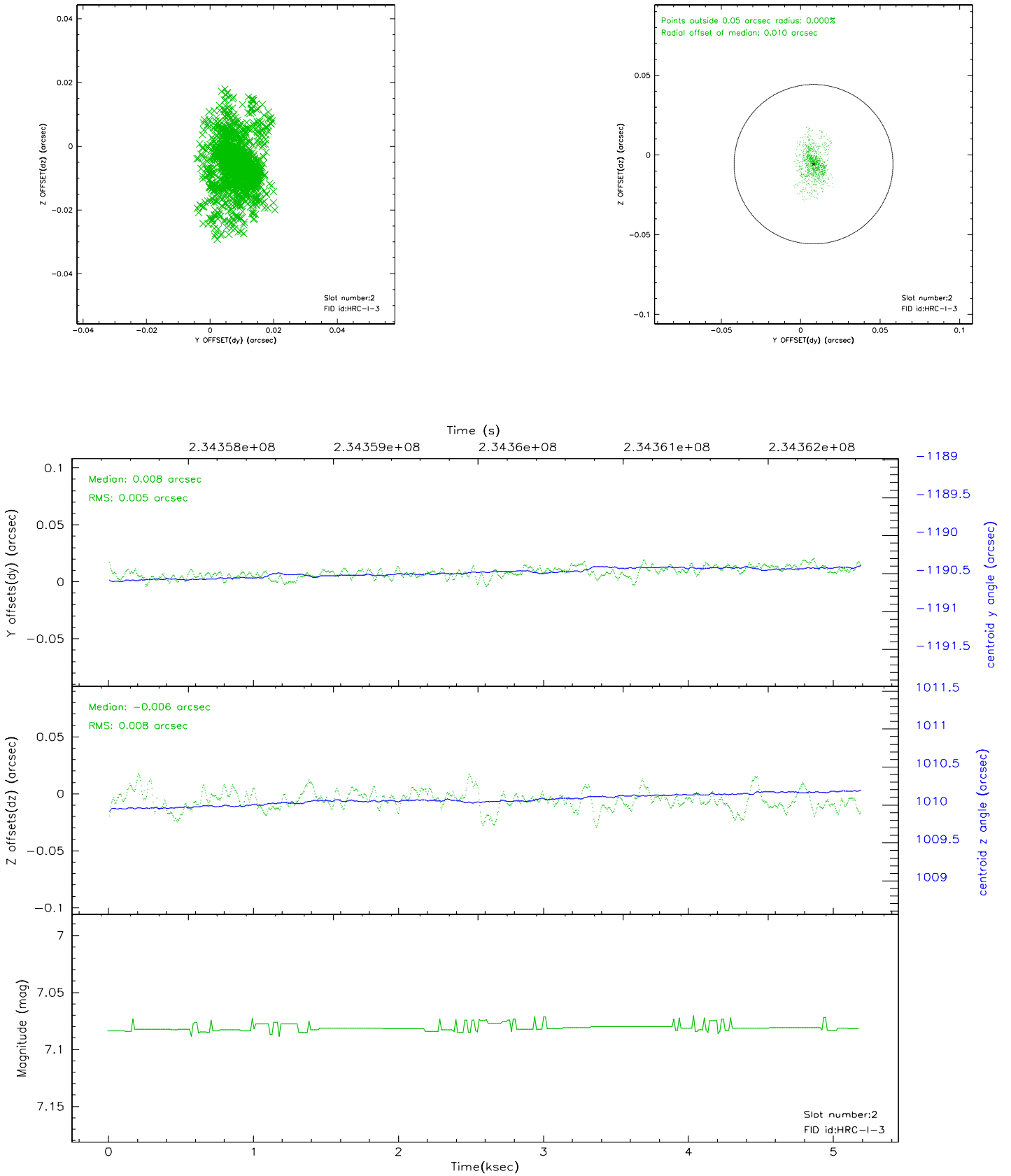
2.5.1 Slot 0



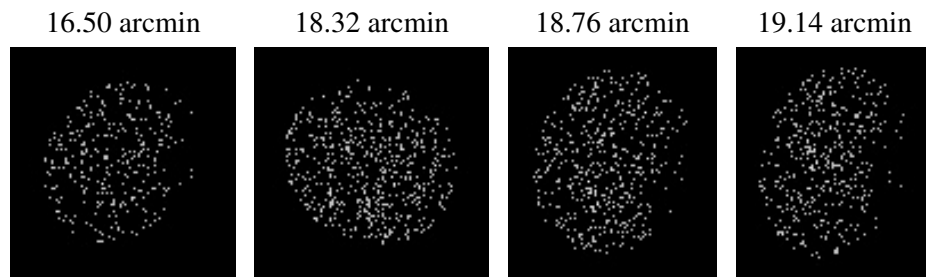
2.5.2 Slot 1



2.5.3 Slot 2



3 Point Sources



A Summary

A.1 Status

V&V Scientist	Beth Sundheim
V&V Date (YYYY-MM-DD)	2007.12.06
V&V Edition	1
V&V Disposition and Status	OK
V&V Charge Time	5.183425

A.2 Comments

The current observation has been reprocessed as part of Repro III ('C' supplement) the purpose of which is to update all HRC-I ObsIDs since Jan 2000 to the latest calibrations available for that configuration. Specifically, we are updating the DEGAP solution and the Gain Maps applied. For more information see the Repro IIIC web page at:

<http://asc.harvard.edu/cda/repro3.html#IIIC>

and the associated links.