

V&V Reference Report

L2 ASCDS Version : 7.6.7.1

Observation 6179 - L2 Version 002
Chandra X-Ray Center

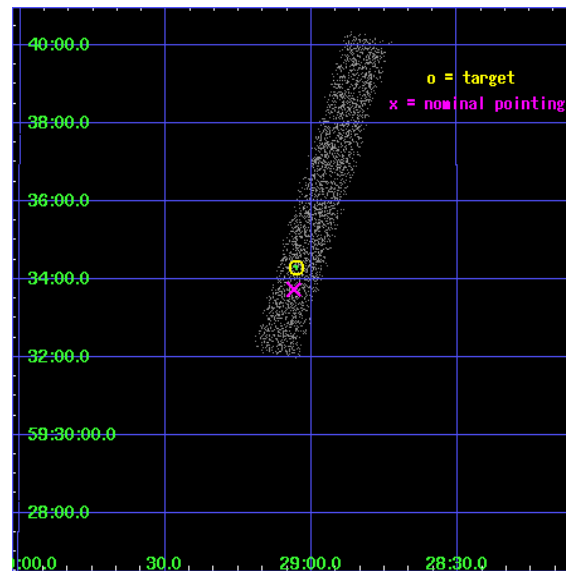
L2 Processing Date : Mar 16 2006

Contents

1	Front	2
2	OBI	3
2.1	OBI	3
2.1.1	Images	3
2.1.2	Bias	3
2.1.3	Parameters	4
2.1.4	Events	4
2.2	Compared Parameters	5
2.3	Aspect	6
2.4	Star Slots	9
2.4.1	Slot 3	9
2.4.2	Slot 4	10
2.4.3	Slot 5	11
2.4.4	Slot 6	12
2.4.5	Slot 7	13
2.5	FID Slots	14
2.5.1	Slot 0	14
2.5.2	Slot 1	15
2.5.3	Slot 2	16
3	Point Sources	17
A	Summary	18
A.1	Status	18
A.2	Comments	18

1 Front

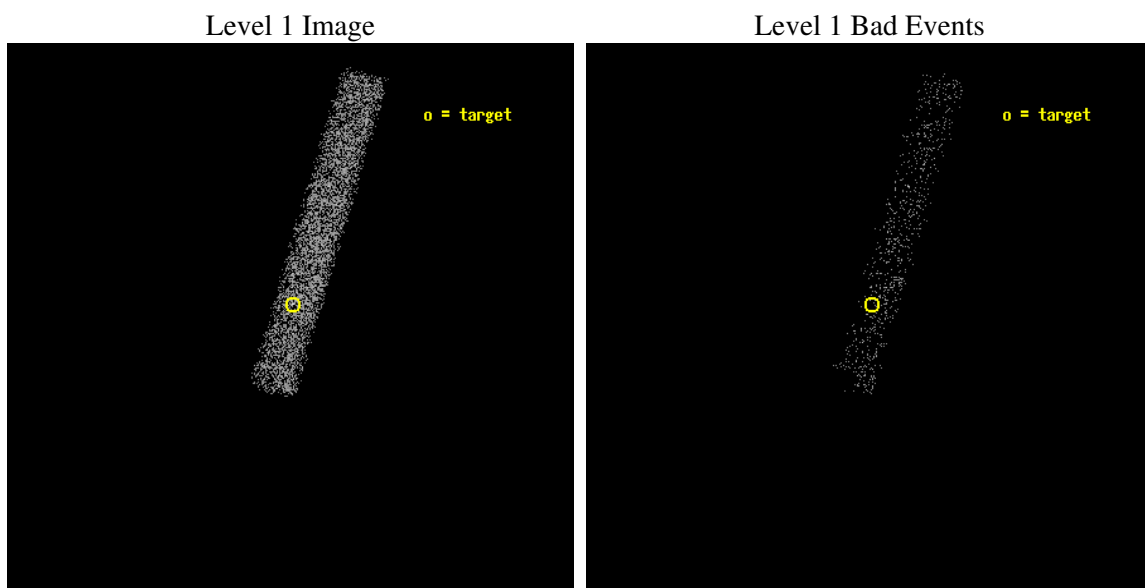
seq_num	400445
obs_id	6179
title	Following the decay of the new accretion powered msec pulsar IGR J00291+5934
observer	Dr Peter Jonker
object	IGR J00291+5934
dtcycle	0
cycle	P
ra_targ	7.262917
dec_targ	59.571944
ra_nom	7.2651229222216
dec_nom	59.562336676358
roll_nom	286.57892906842
revision	2
ontime	5185.2000772655
livetime	4702.7027727784
ontime7	5185.2000772655
l2events	3124



2 OBI

2.1 OBI

2.1.1 Images



2.1.2 Bias

Chip 7



2.1.3 Parameters

obi_num	0
ascdsver	7.6.7.1
caldsver	3.2.1
date	2006-03-16T09:44:44
revision	2

sched_exp_time	5000.000000
ontime	5994.5477201343
ontime7	5994.5477201343
l1events	8440

2.1.4 Events

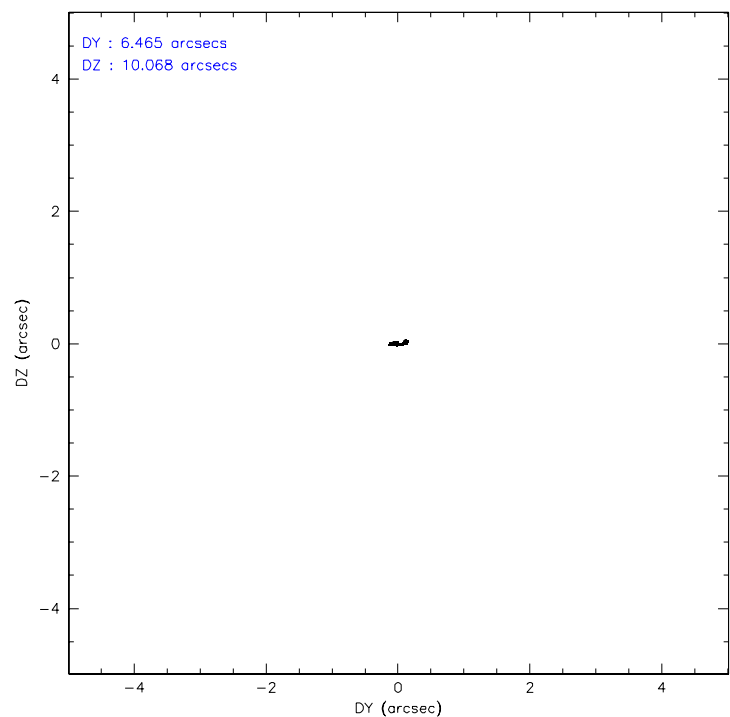
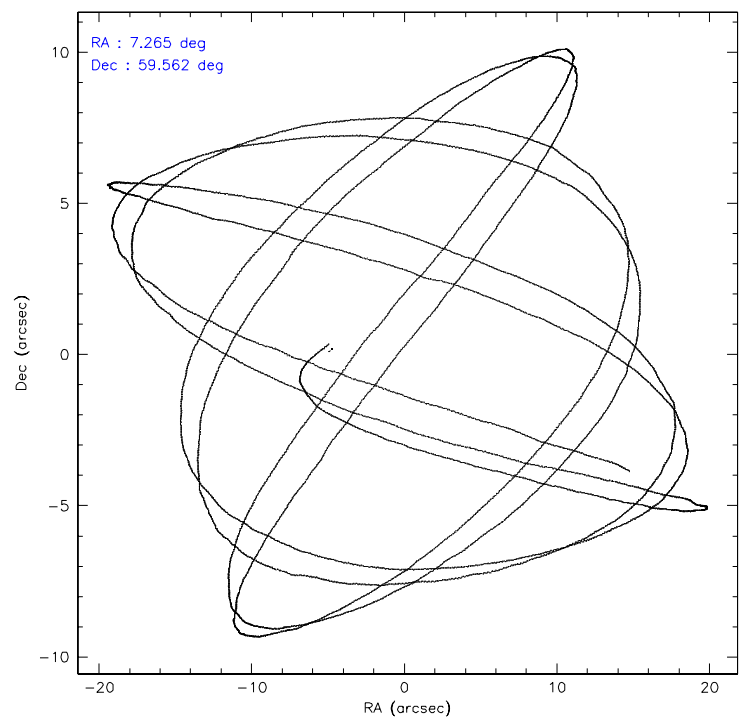
	ccd 7
level 1 events	8440
rejected events	5167
rejected %	61%

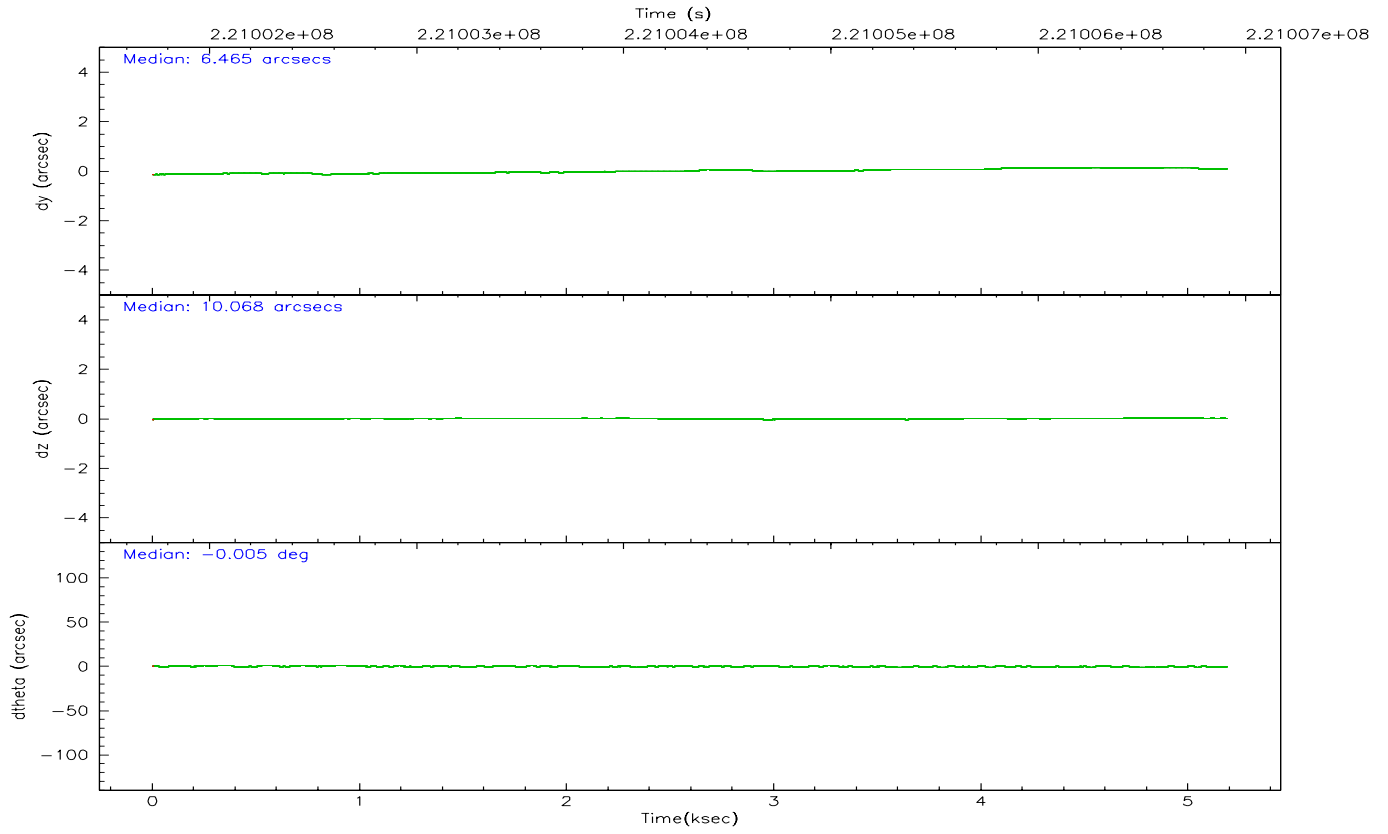
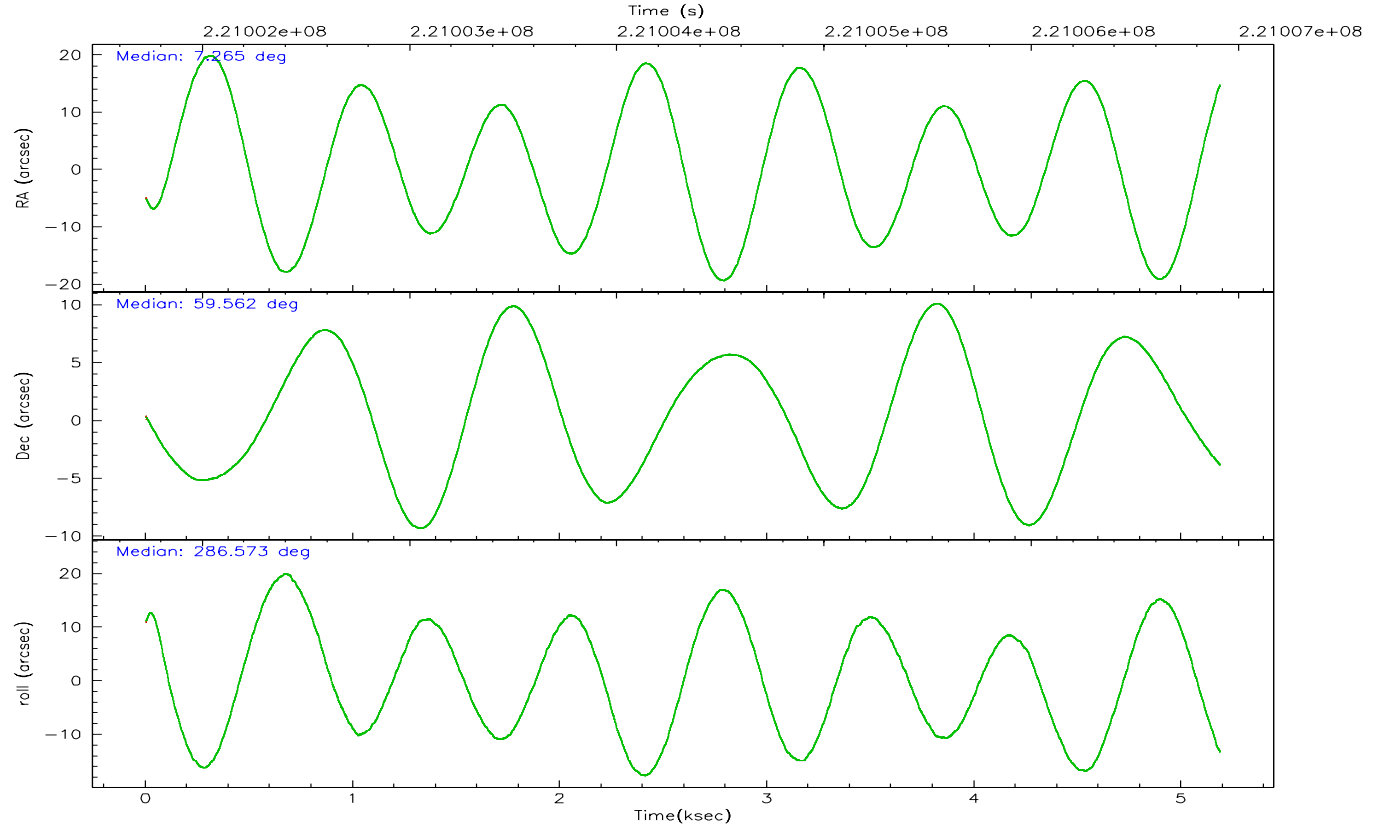
	ccd 7
grade 0 events	266
	3%
grade 1 events	7
	0%
grade 2 events	851
	10%
grade 3 events	375
	4%
grade 4 events	387
	4%
grade 5 events	559
	6%
grade 6 events	1904
	22%
grade 7 events	4091
	48%

2.2 Compared Parameters

Parameter	Planned	Actual	Parameter	Planned	Actual
Instrument	ACIS	ACIS	Obspar format version number	6	6
Detector	ACIS-7	ACIS-7	Obspar file type	PREDICTED	ACTUAL
Grating	NONE	NONE	Obspar update status	NONE	UPDATED
Data mode	FAINT	FAINT	On-chip summing requested	N	N
Observation mode	POINTING	POINTING	Subarray requested	1/8	1/8
Pointing RA	7.225511	7.265122922221582	Subarray start row	0	449
Pointing Dec	59.580782	59.56233667635806	Subarray row count	1024	128
Pointing Roll	286.456441	286.5789290684218	Alternating exposures requested	N	N
SIM focus pos (mm)	-0.684267	-0.6828225247311905	Primary exposure time	0.000000	0.4
SIM defocus (mm)	0	0.001444936568705701			
SIM translation stage pos (mm)	-190.132523	-190.1400660498719			
SIM translation stage offset (mm)	0	0.00754346686406393			
Observation start time	221001918.184000	221000889.44043			
Observation start date	2005-01-01T21:24:14	2005-01-01T21:08:09			
Observation end time	221006918.184000	221007858.41575			
Observation end date	2005-01-01T22:47:34	2005-01-01T23:04:18			
Read mode	TIMED	TIMED			

2.3 Aspect



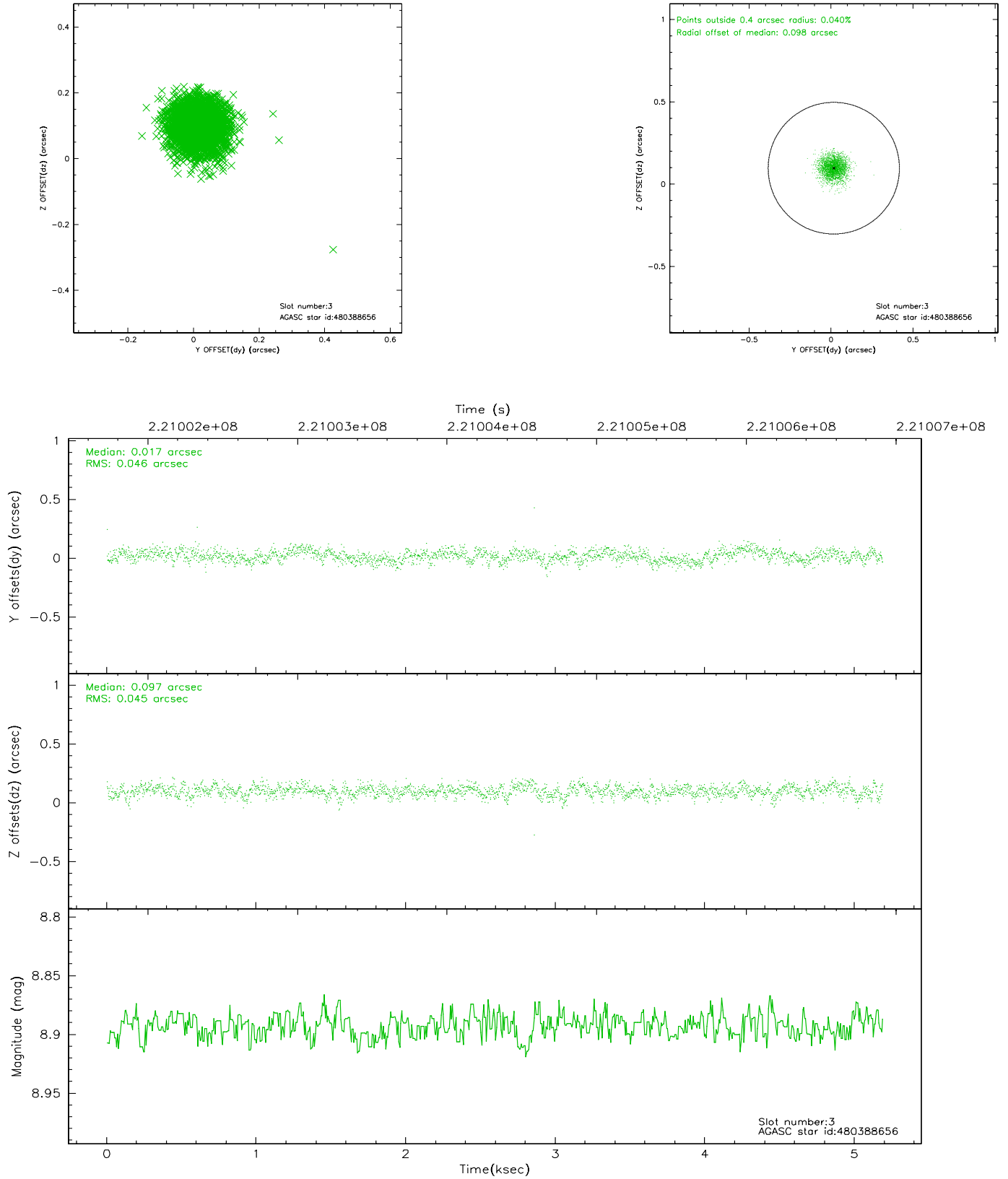


Slot Statistics

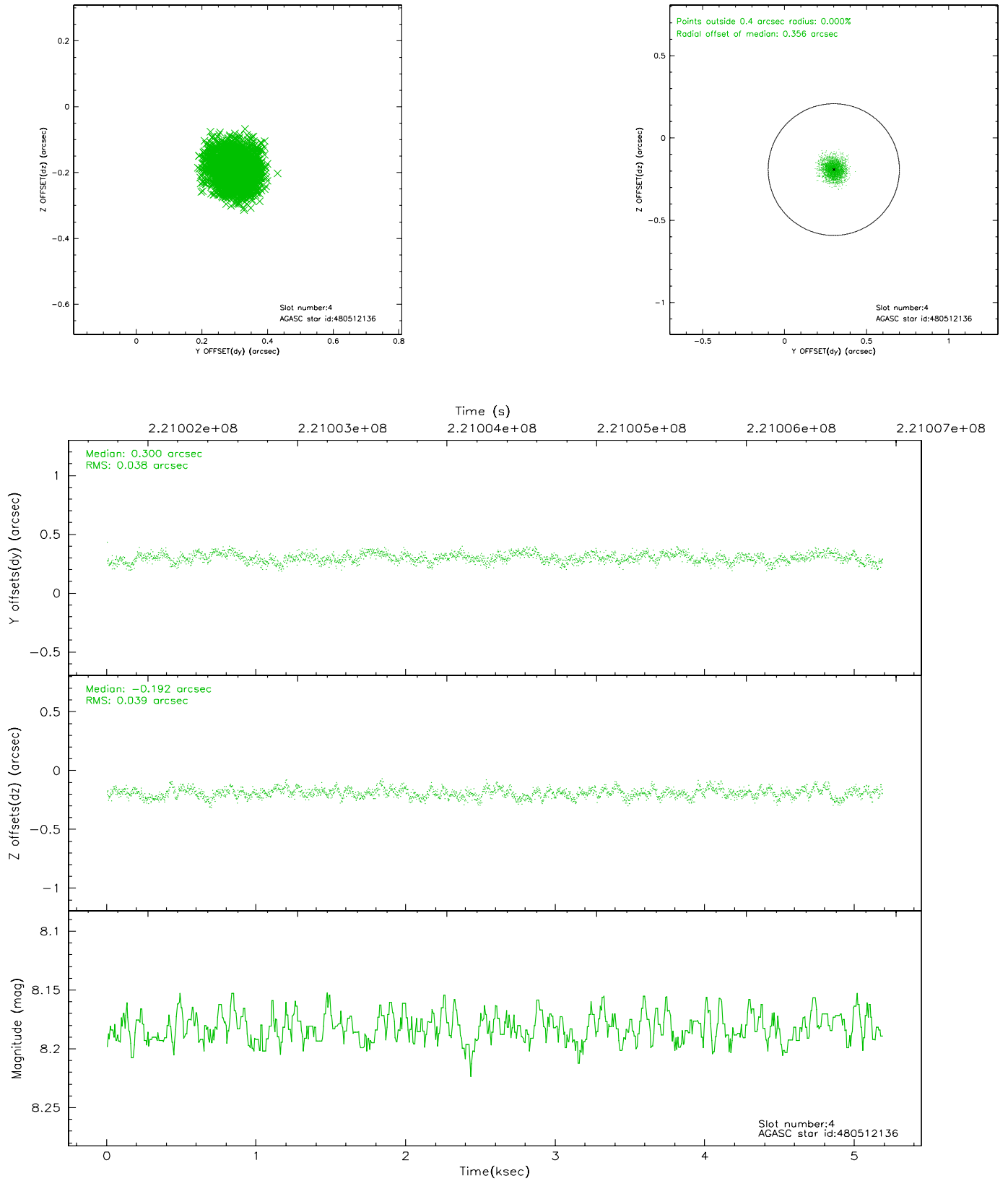
slot	status	id	mag	n_pts	med_dy	med_dz	dr1	dr2	ra	dec	mean_y	mean_z
0	FID	ACIS-S-2	7.10	1266	-0.050	0.005	0.006	0.010	0.000000	0.000000	-759.22	-1731.33
1	FID	ACIS-S-4	7.20	1266	0.047	0.023	0.005	0.009	0.000000	0.000000	2153.59	176.02
2	FID	ACIS-S-5	7.23	1266	-0.029	-0.019	0.006	0.011	0.000000	0.000000	-1810.58	170.90
3	GUIDE	480388656	8.89	2531	0.017	0.097	0.067	0.107	6.593066	59.181927	1041.82	-1523.56
4	GUIDE	480512136	8.18	2531	0.300	-0.192	0.058	0.094	7.475231	59.254866	1255.62	108.05
5	GUIDE	480513376	8.58	2529	0.116	-0.086	0.074	0.116	7.508901	59.105688	1788.53	18.41
6	GUIDE	526278336	9.22	2527	-0.175	0.134	0.078	0.124	7.887747	60.072116	-1364.43	1643.56
7	GUIDE	526276608	8.60	2530	-0.262	0.047	0.086	0.133	7.524994	60.151139	-1818.93	1097.27

2.4 Star Slots

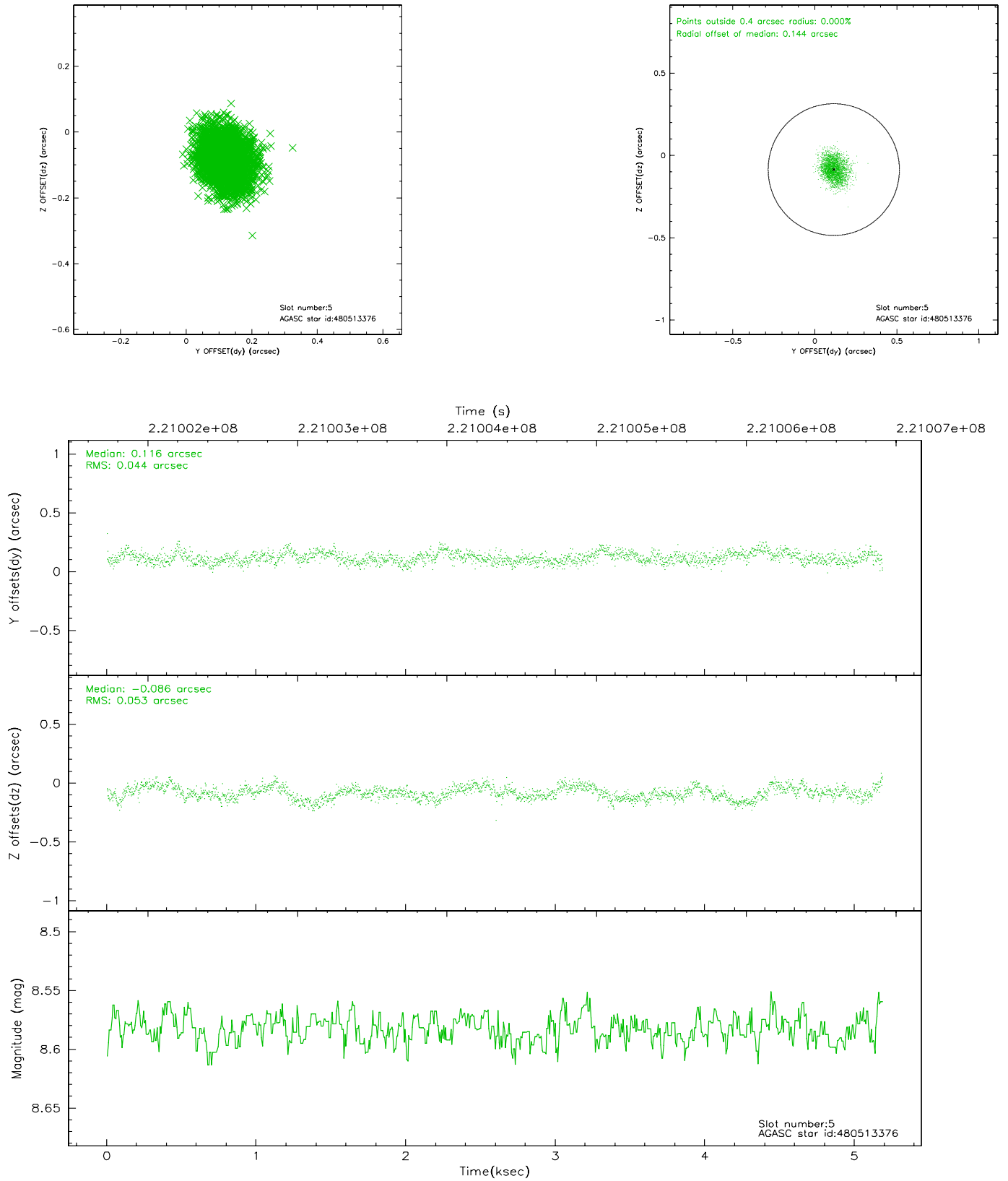
2.4.1 Slot 3



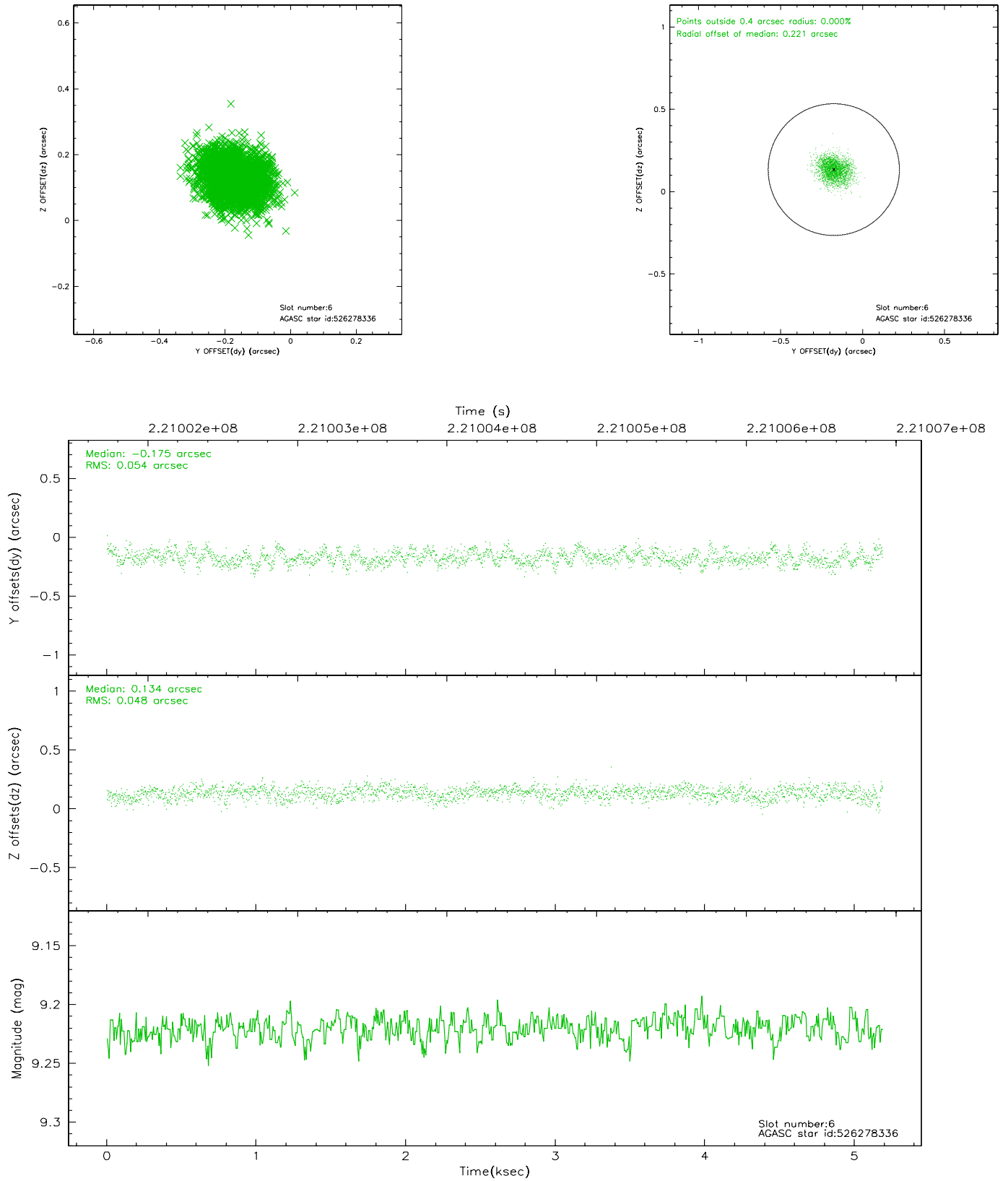
2.4.2 Slot 4



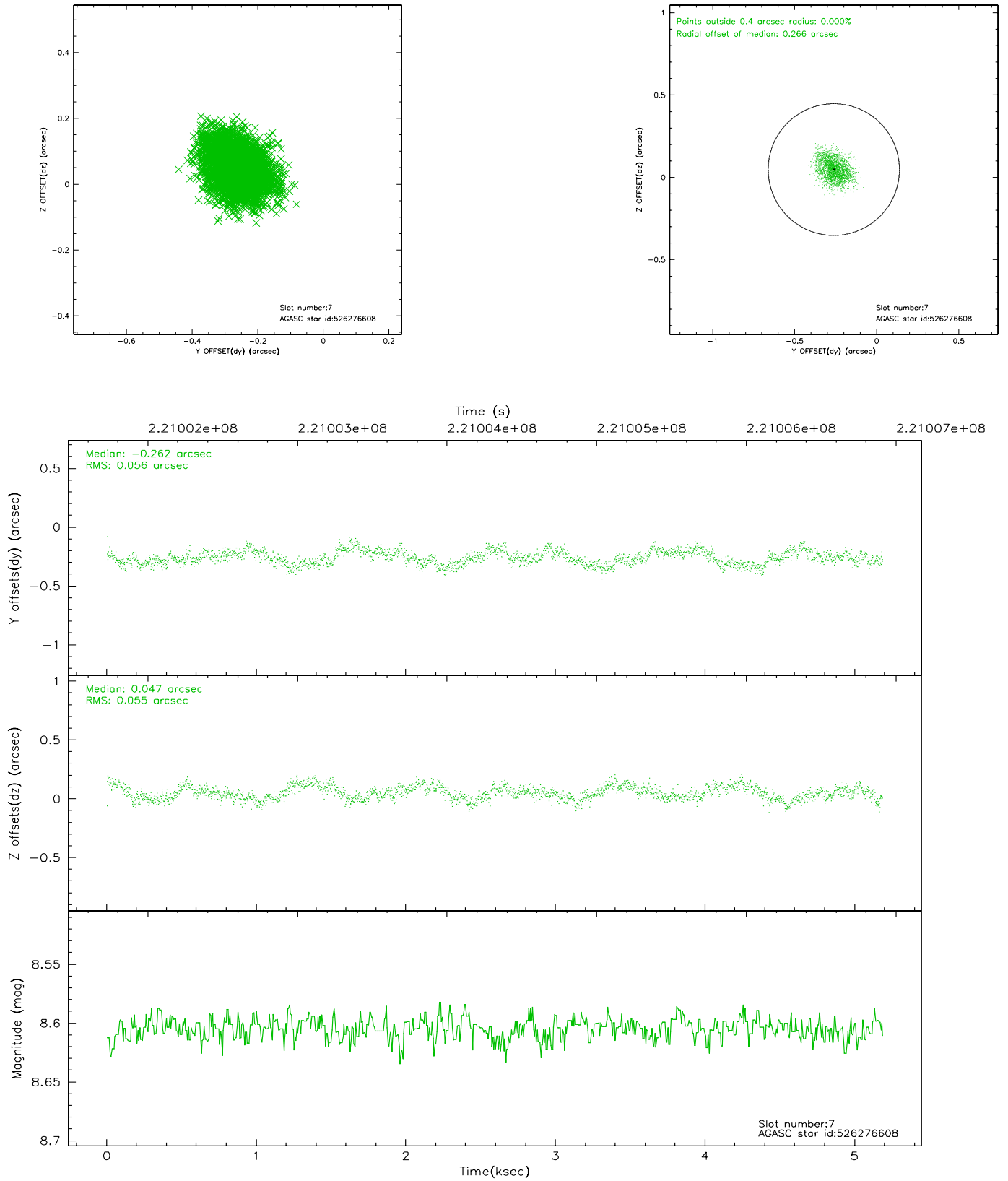
2.4.3 Slot 5



2.4.4 Slot 6

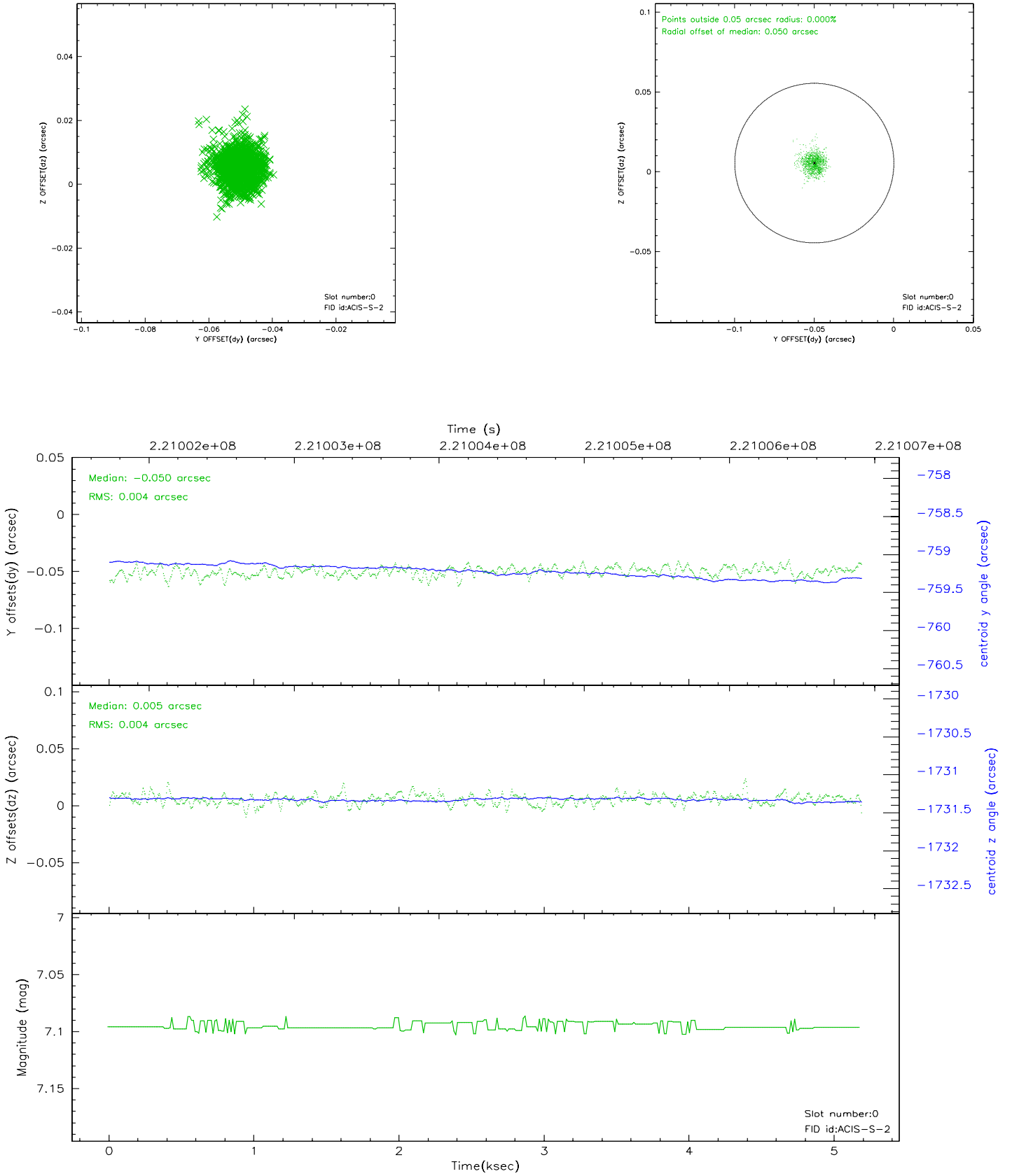


2.4.5 Slot 7

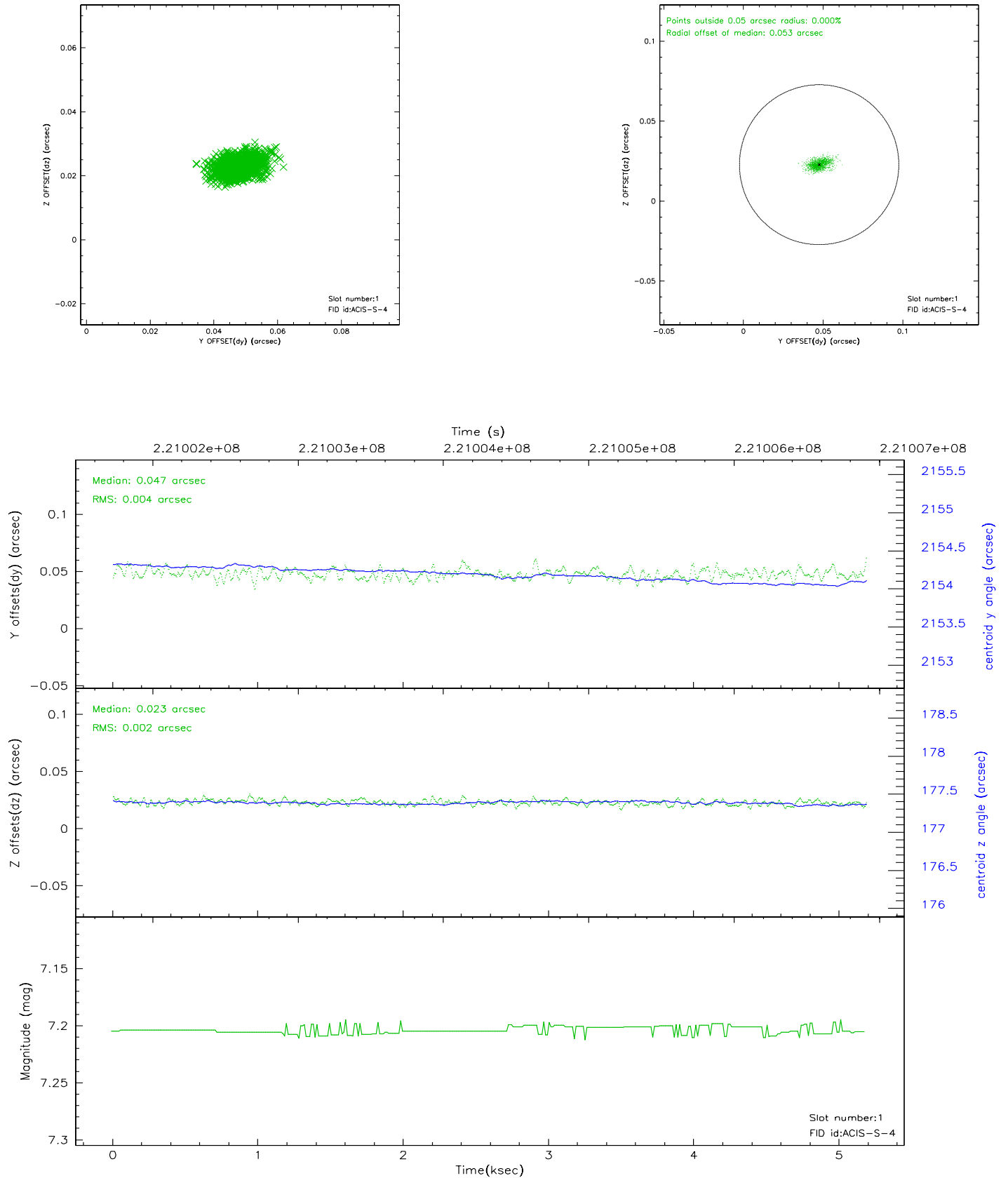


2.5 FID Slots

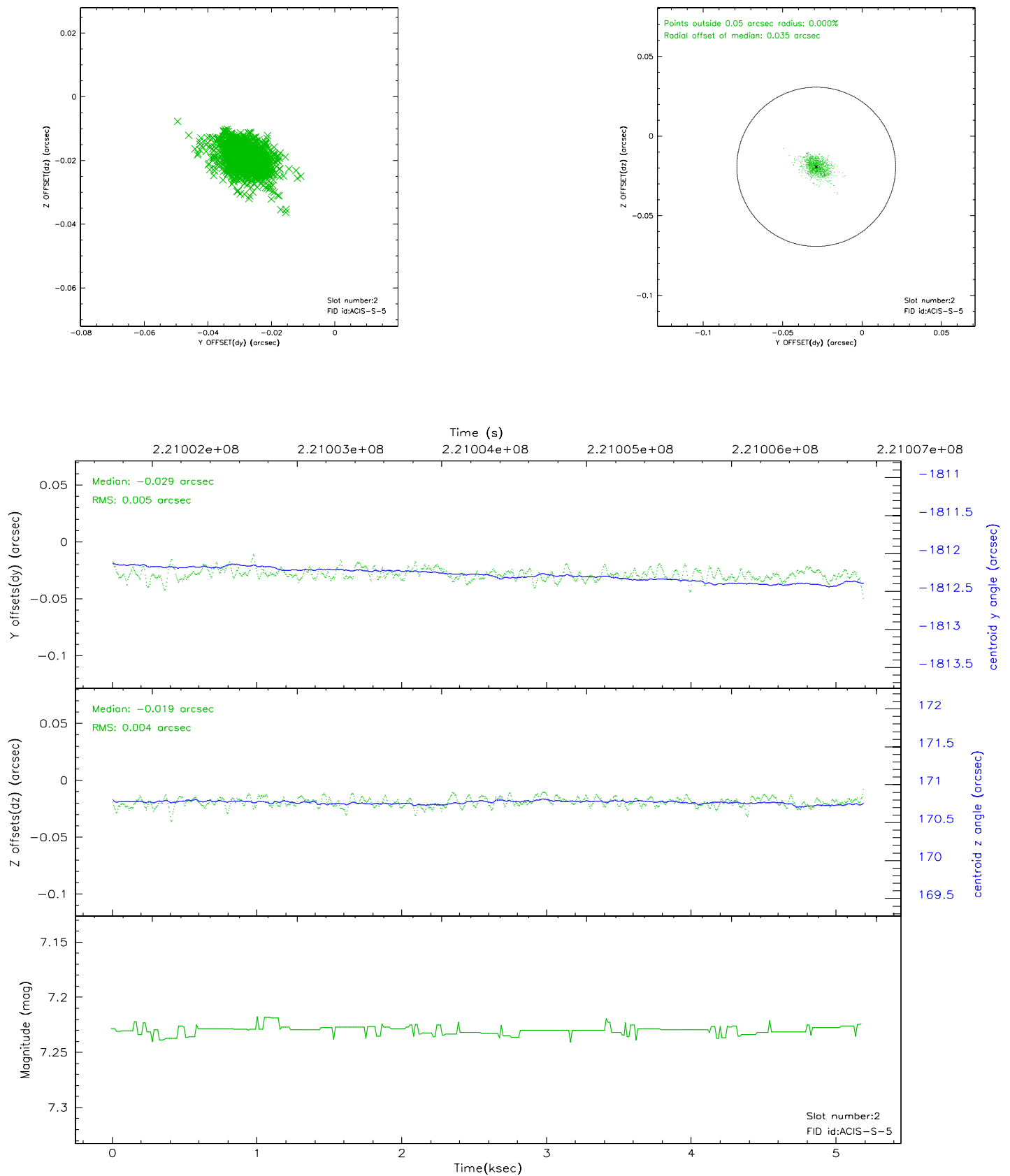
2.5.1 Slot 0



2.5.2 Slot 1



2.5.3 Slot 2



3 Point Sources

A Summary

A.1 Status

V&V Scientist	Jen Lauer
V&V Date (YYYY-MM-DD)	2006.03.16
V&V Edition	1
V&V Disposition and Status	OK
V&V Charge Time	5.1852

A.2 Comments