

V&V Reference Report

L2 ASCDS Version : 8.4.3.1

Observation 5497 - L2 Version 2
Chandra X-Ray Center

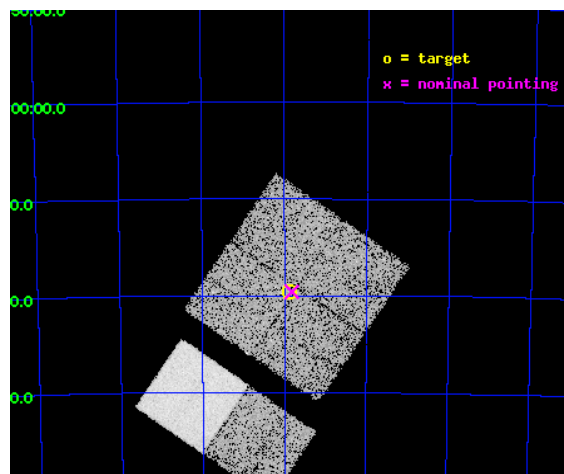
L2 Processing Date : Mar 27 2012

Contents

1	Front	2
2	OBI	3
2.1	OBI	3
2.1.1	Images	3
2.1.2	Bias	3
2.1.3	Parameters	4
2.1.4	Events	4
2.2	Compared Parameters	5
2.3	Aspect	6
2.4	Star Slots	9
2.4.1	Slot 3	9
2.4.2	Slot 4	10
2.4.3	Slot 5	11
2.4.4	Slot 6	12
2.4.5	Slot 7	13
2.5	FID Slots	14
2.5.1	Slot 0	14
2.5.2	Slot 1	15
2.5.3	Slot 2	16
A	Summary	17
A.1	Status	17
A.2	Comments	17

1 Front

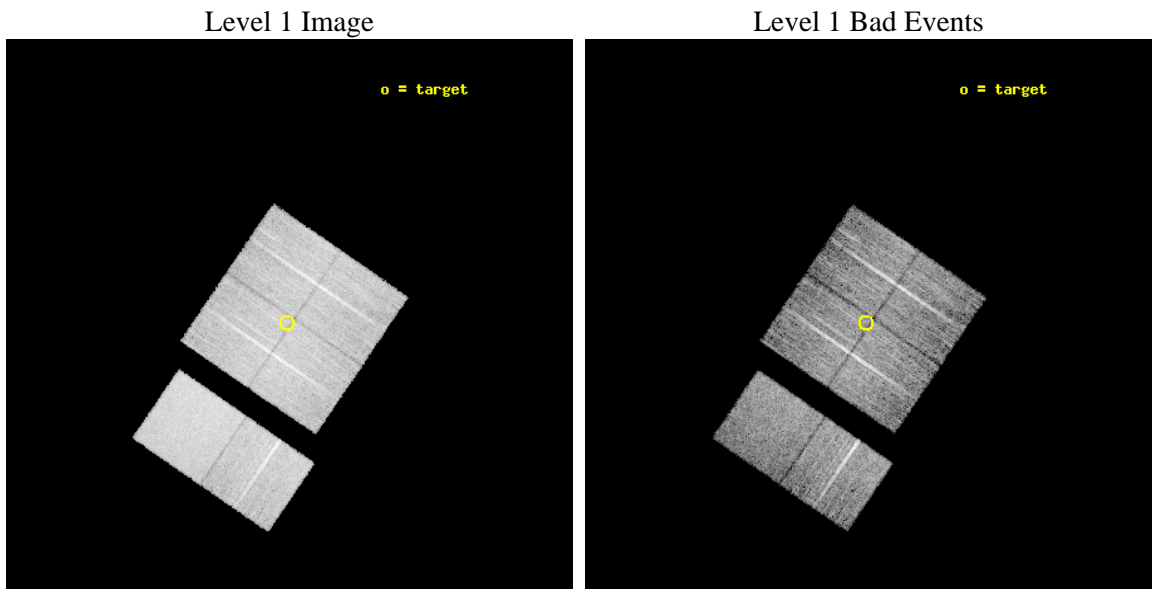
seq_num	400427	Sequence number
obs_id	5497	Observation id
title	Discovering X-ray pulsars in the Wing of the Small Magellanic Cloud	
observer	Prof Malcolm Coe	Principal investigator
object	SMCwing 18	Source name
dtcycle	0	
cycle	P	events from which exps? Prim/Second/Both
ra_targ	15.970833	Observer's specified target RA [deg]
dec_targ	-73.325833	Observer's specified target Dec [deg]
ra_nom	15.954832142965	Nominal RA [deg]
dec_nom	-73.326783980401	Nominal Dec [deg]
roll_nom	214.37392615309	Nominal Roll [deg]
revision	2	Processing version of data
ontime	8755.06648314	Sum of GTIs [s]
livetime	8644.2045596623	Livetime [s]
ontime0	8754.9433631599	Sum of GTIs [s]
ontime1	8754.9844031334	Sum of GTIs [s]
ontime2	8755.0254431367	Sum of GTIs [s]
ontime3	8755.06648314	Sum of GTIs [s]
ontime6	8755.1485631466	Sum of GTIs [s]
ontime7	8755.1075231433	Sum of GTIs [s]
l2events	79632	Number of level 2 events



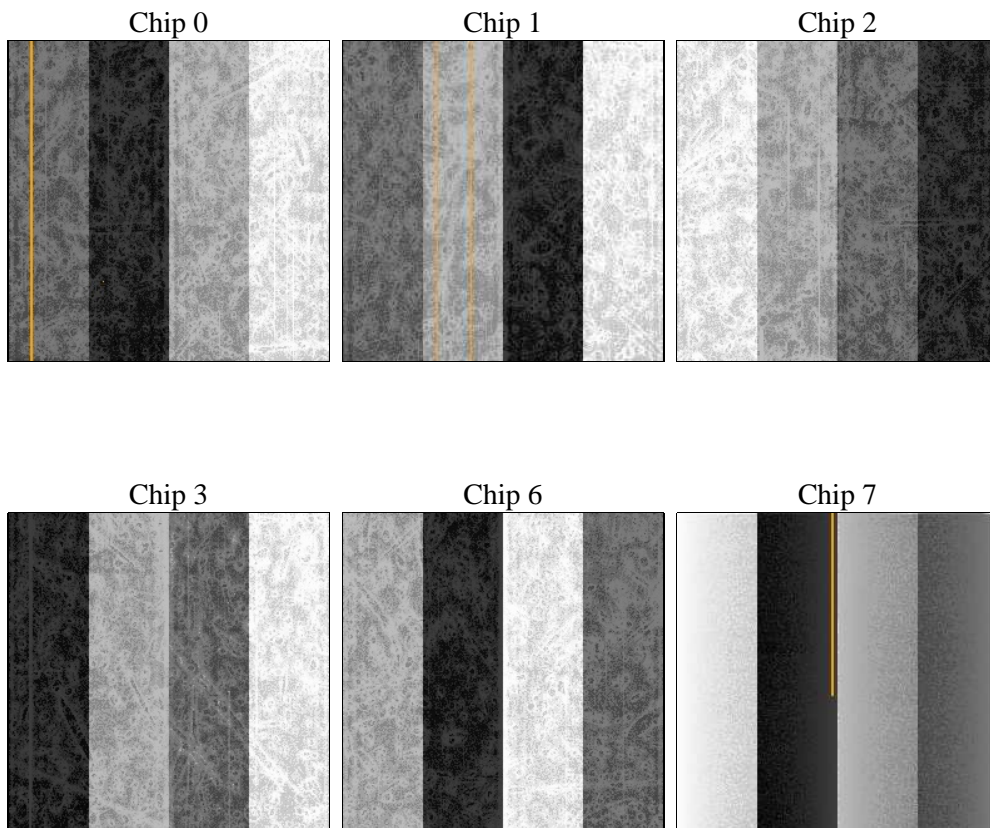
2 OBI

2.1 OBI

2.1.1 Images



2.1.2 Bias



2.1.3 Parameters

obi_num	0	Obi number	sched_exp_time	9000.000000	[s] Scheduled observation exposure time
ascdsver	8.4.3	Processing system revision	ontime	8755.06648314	Sum of GTIs [s]
caldsver	4.4.8	 	ontime0	8754.9433631599	Sum of GTIs [s]
date	2012-03-27T03:27:39	Date and time of file creation	ontime1	8754.9844031334	Sum of GTIs [s]
revision	2	Processing version of data	ontime2	8755.0254431367	Sum of GTIs [s]
			ontime3	8755.06648314	Sum of GTIs [s]
			ontime6	8755.1485631466	Sum of GTIs [s]
			ontime7	8755.1075231433	Sum of GTIs [s]
			l1events	472799	Number of level 1 events

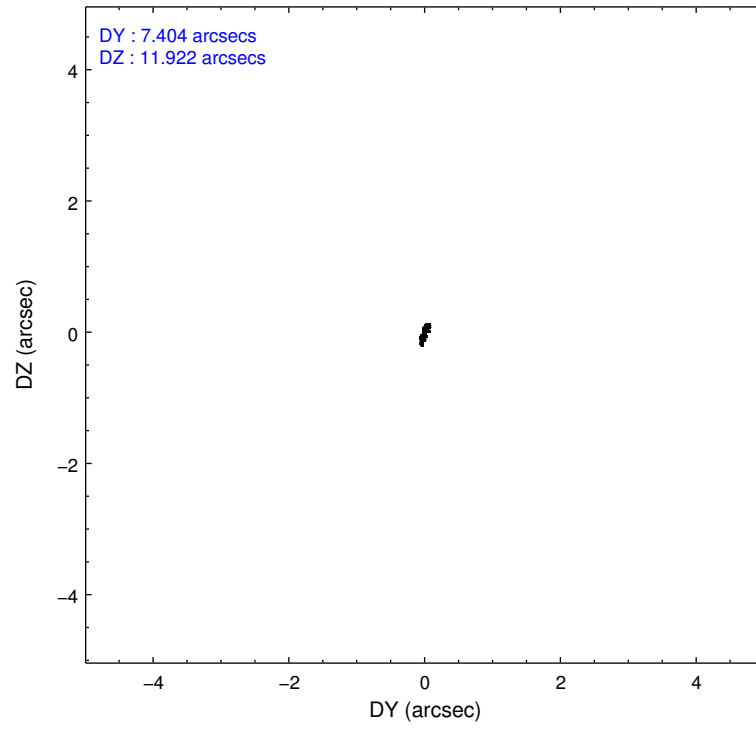
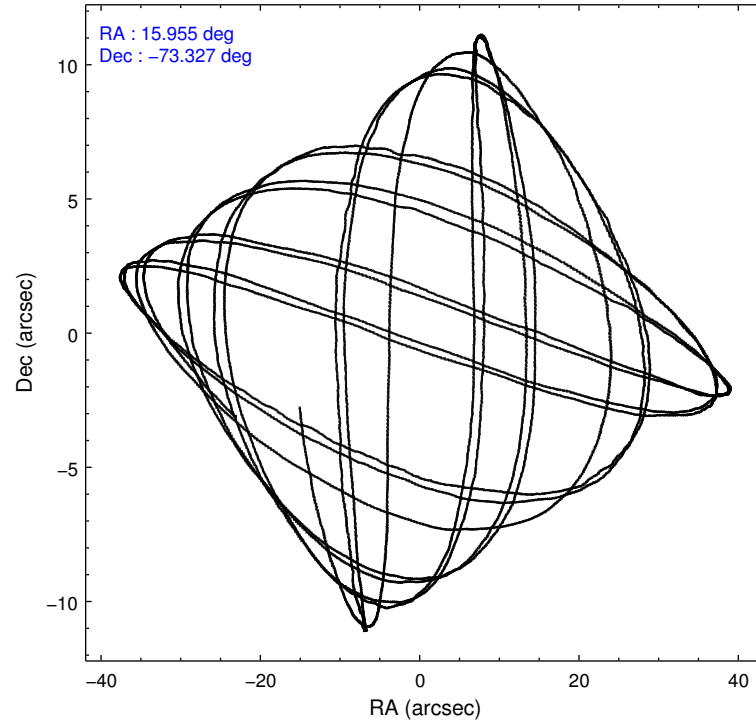
2.1.4 Events

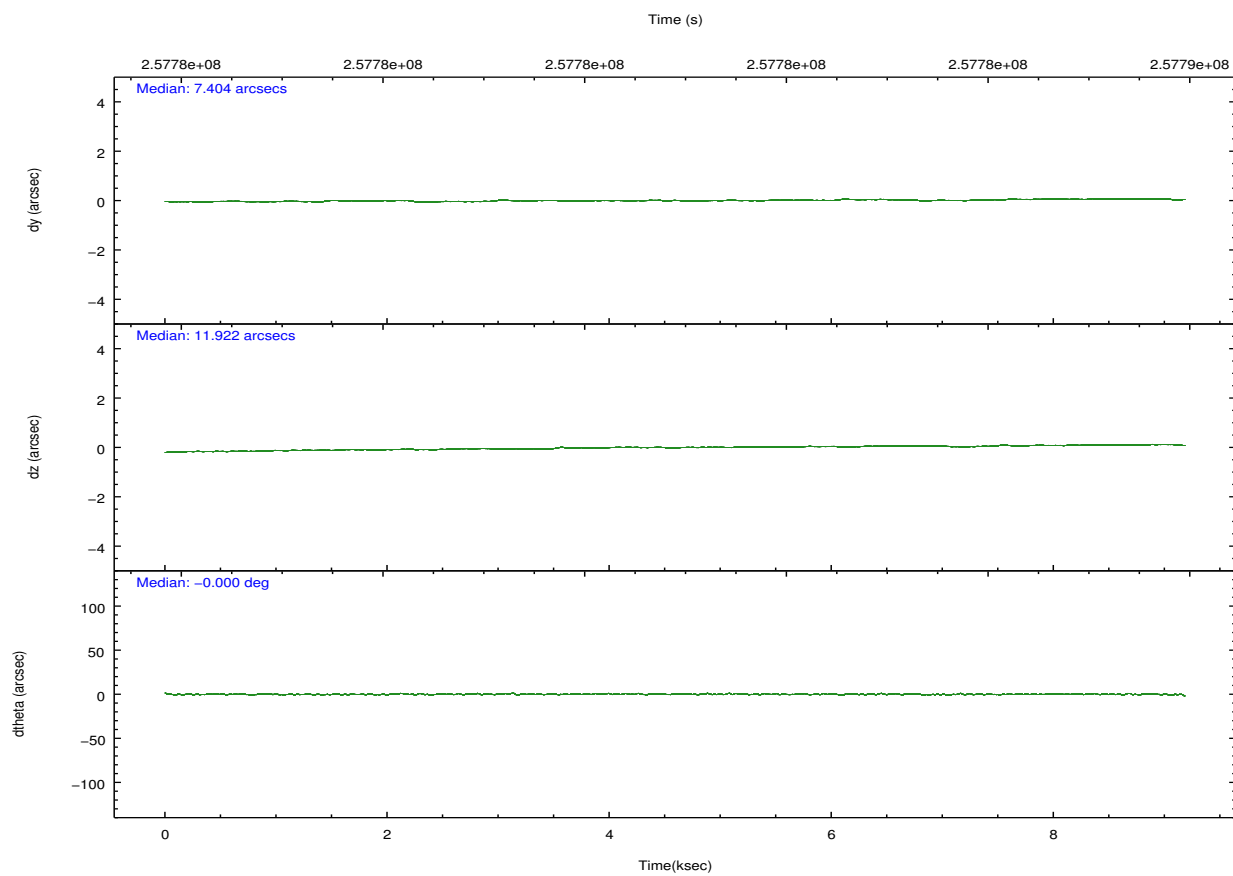
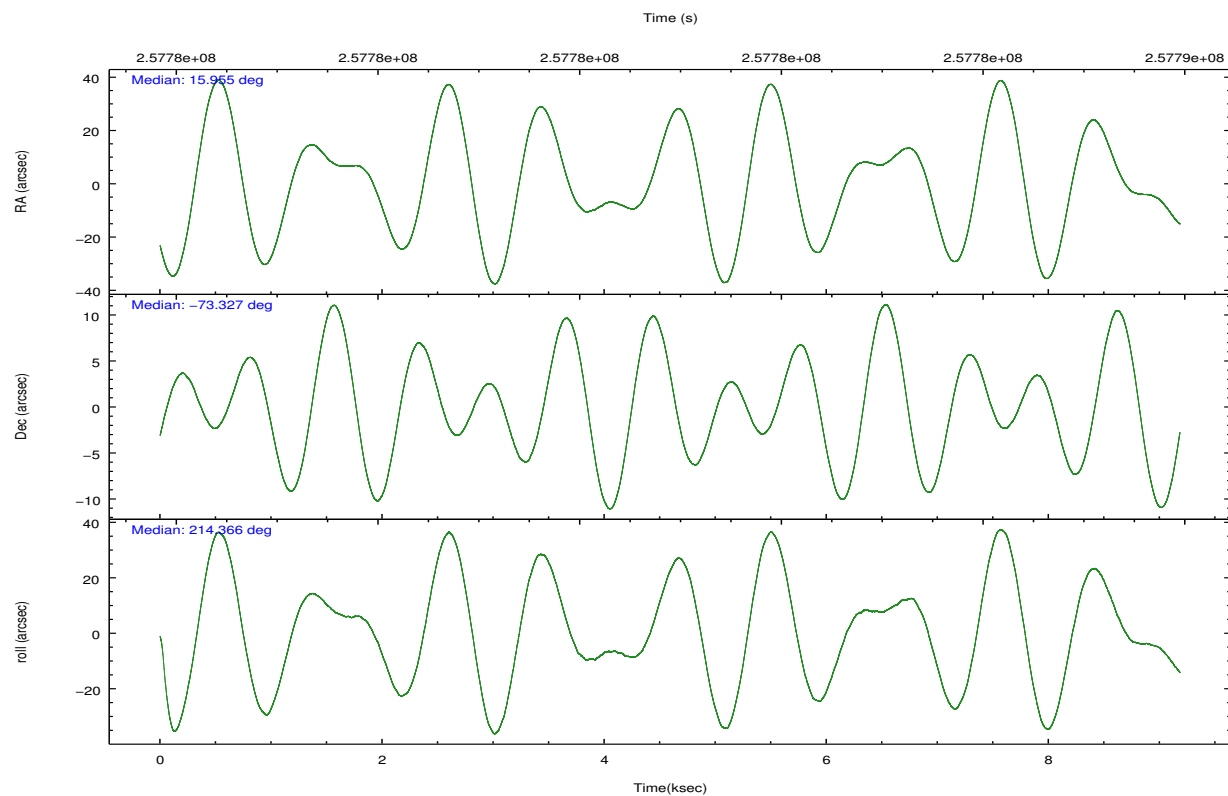
	ccd 0	ccd 1	ccd 2	ccd 3	ccd 6	ccd 7		ccd 0	ccd 1	ccd 2	ccd 3	ccd 6	ccd 7
level 1 events	69080	72830	77218	73575	78322	101774	grade 0 events	3843	3740	4003	3922	3386	3724
rejected events	60130	63425	68468	64674	69422	59748		5%	5%	5%	5%	4%	3%
rejected %	87%	87%	88%	87%	88%	58%	grade 1 events	39	40	49	56	39	116
								0%	0%	0%	0%	0%	0%
							grade 2 events	1896	2024	1787	1734	1943	8490
								2%	2%	2%	2%	2%	8%
							grade 3 events	860	940	788	827	907	3641
								1%	1%	1%	1%	1%	3%
							grade 4 events	817	944	796	883	855	3624
								1%	1%	1%	1%	1%	3%
							grade 5 events	3062	3235	2803	3543	3529	9808
								4%	4%	3%	4%	4%	9%
							grade 6 events	1540	1765	1380	1543	1811	22575
								2%	2%	1%	2%	2%	22%
							grade 7 events	57023	60142	65612	61067	65852	49796
								82%	82%	84%	82%	84%	48%

2.2 Compared Parameters

Parameter	Planned	Actual	Parameter	Planned	Actual
Instrument	ACIS	ACIS	Obspar format version number	7	7
Detector	ACIS-012367	ACIS-012367	Obspar file type	PREDICTED	ACTUAL
Grating	NONE	NONE	Obspar update status	NONE	UPDATED
Data mode	FAINT	FAINT	Number of optional ACIS chips dropped	0	0
Observation mode	POINTING	POINTING	On-chip summing requested	N	N
[deg] Pointing RA	15.995865	15.95483214296455	Subarray requested	NONE	NONE
[deg] Pointing Dec	-73.302011	-73.32678398040134	Alternating exposures requested	N	N
[deg] Pointing Roll	214.204555	214.3739261530928	[s] Primary exposure time	0.000000	3.2
[mm] SIM focus pos	-0.782348	-0.7809083437167272			
[mm] SIM defocus	0	0.001439871863259334			
[mm] SIM translation stage pos	-233.592463	-233.5874344608287			
[mm] SIM translation stage offset	0	-0.005018542100998502			
[s] Observation start time (MET)	257776489.184000	257776113.26258			
Observation start date	2006-03-03T12:33:44	2006-03-03T12:28:33			
[s] Observation end time (MET)	257785489.184000	257785623.21303			
Observation end date	2006-03-03T15:03:44	2006-03-03T15:07:03			
Read mode	TIMED	TIMED			

2.3 Aspect



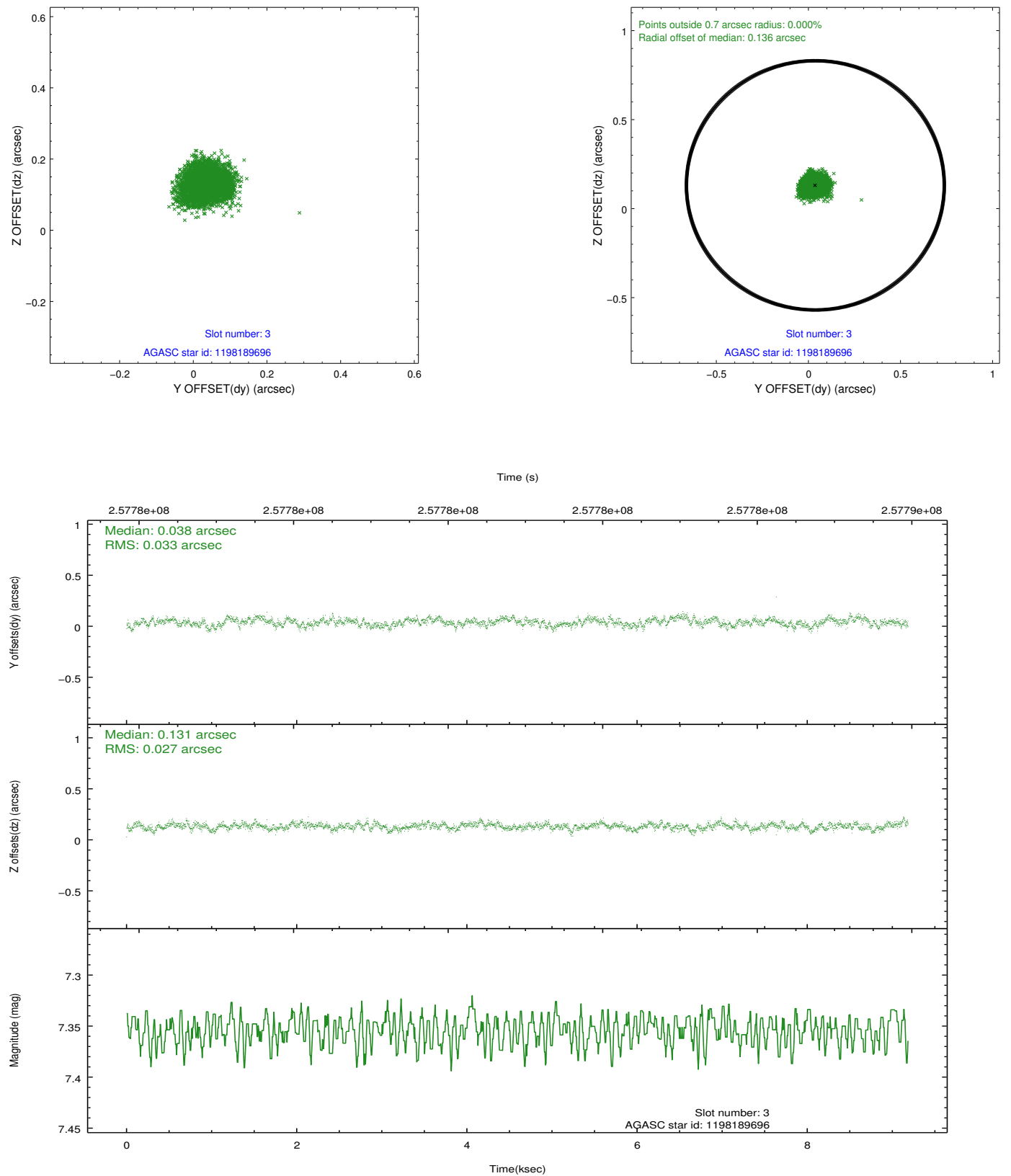


Slot Statistics

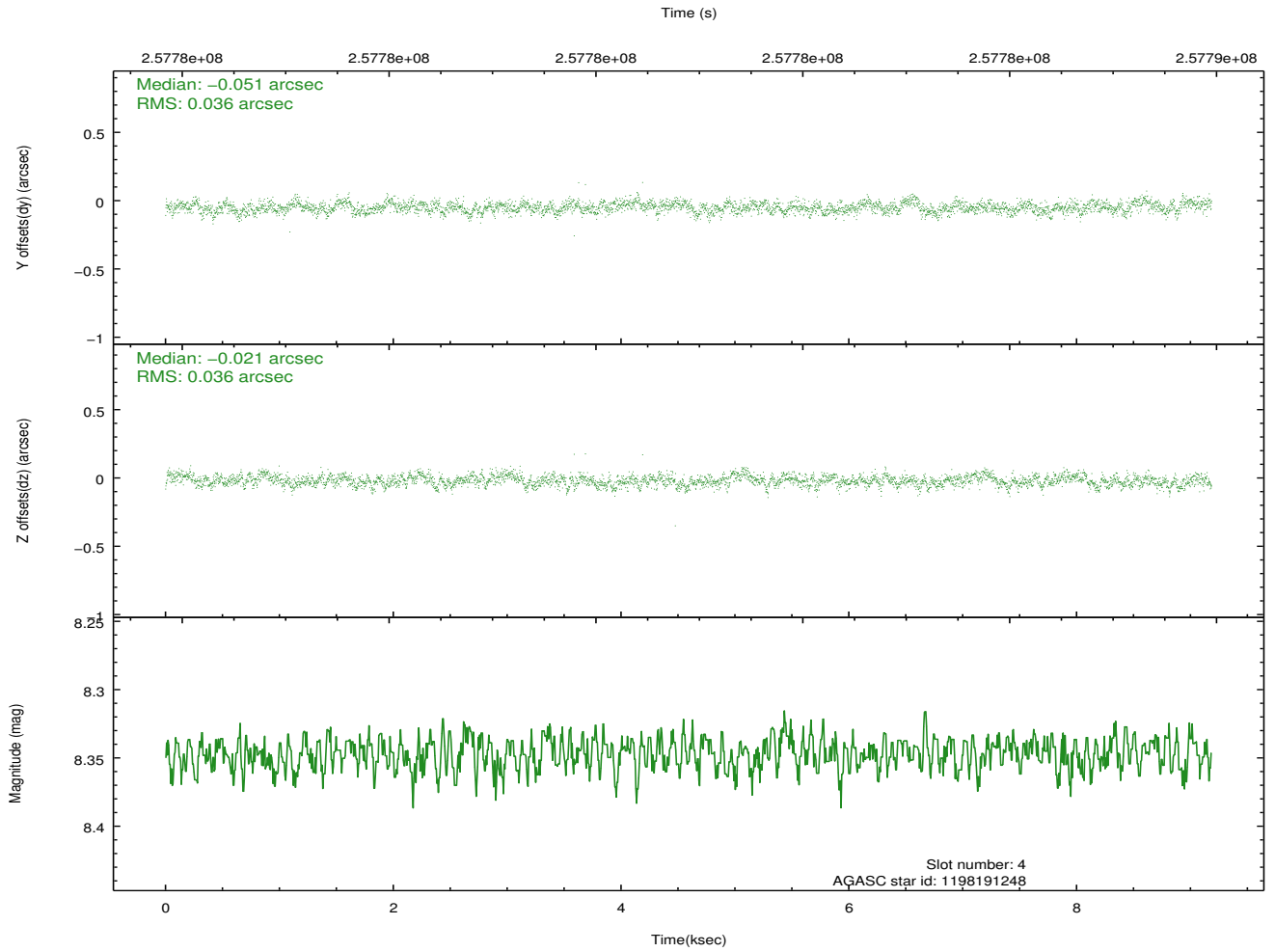
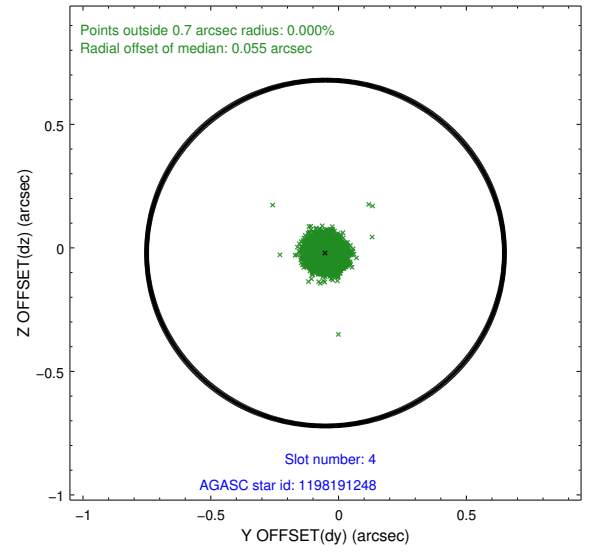
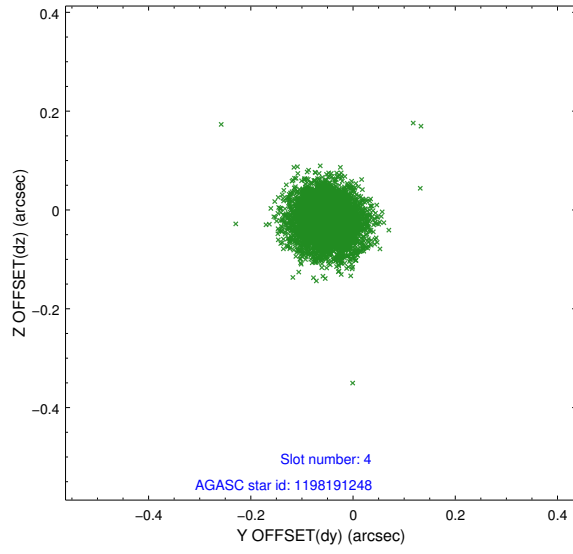
slot	status	id	mag	n_pts	med_dy	med_dz	dr1	dr2	ra	dec	mean_y	mean_z
0	FID	ACIS-I-1	7.24	2239	0.053	-0.022	0.007	0.012	0.000000	0.000000	932.29	-835.47
1	FID	ACIS-I-5	7.23	2240	-0.169	0.069	0.006	0.010	0.000000	0.000000	-1815.66	1061.89
2	FID	ACIS-I-6	7.25	2239	0.025	0.023	0.008	0.013	0.000000	0.000000	397.23	1706.95
3	GUIDE	1198189696	7.35	4481	0.038	0.131	0.045	0.074	15.223750	-72.697522	-536.21	-2259.69
4	GUIDE	1198191248	8.35	4480	-0.051	-0.021	0.054	0.086	15.995132	-73.462457	325.21	477.02
5	GUIDE	1198273408	9.33	4480	0.062	-0.129	0.103	0.161	17.532323	-73.621495	-632.14	1844.62
6	GUIDE	1198282744	9.01	4480	0.057	0.128	0.078	0.126	17.028326	-73.013356	-1476.83	-240.63
7	GUIDE	1198275224	9.64	4479	-0.103	-0.110	0.127	0.203	16.880121	-73.921864	527.97	2346.69

2.4 Star Slots

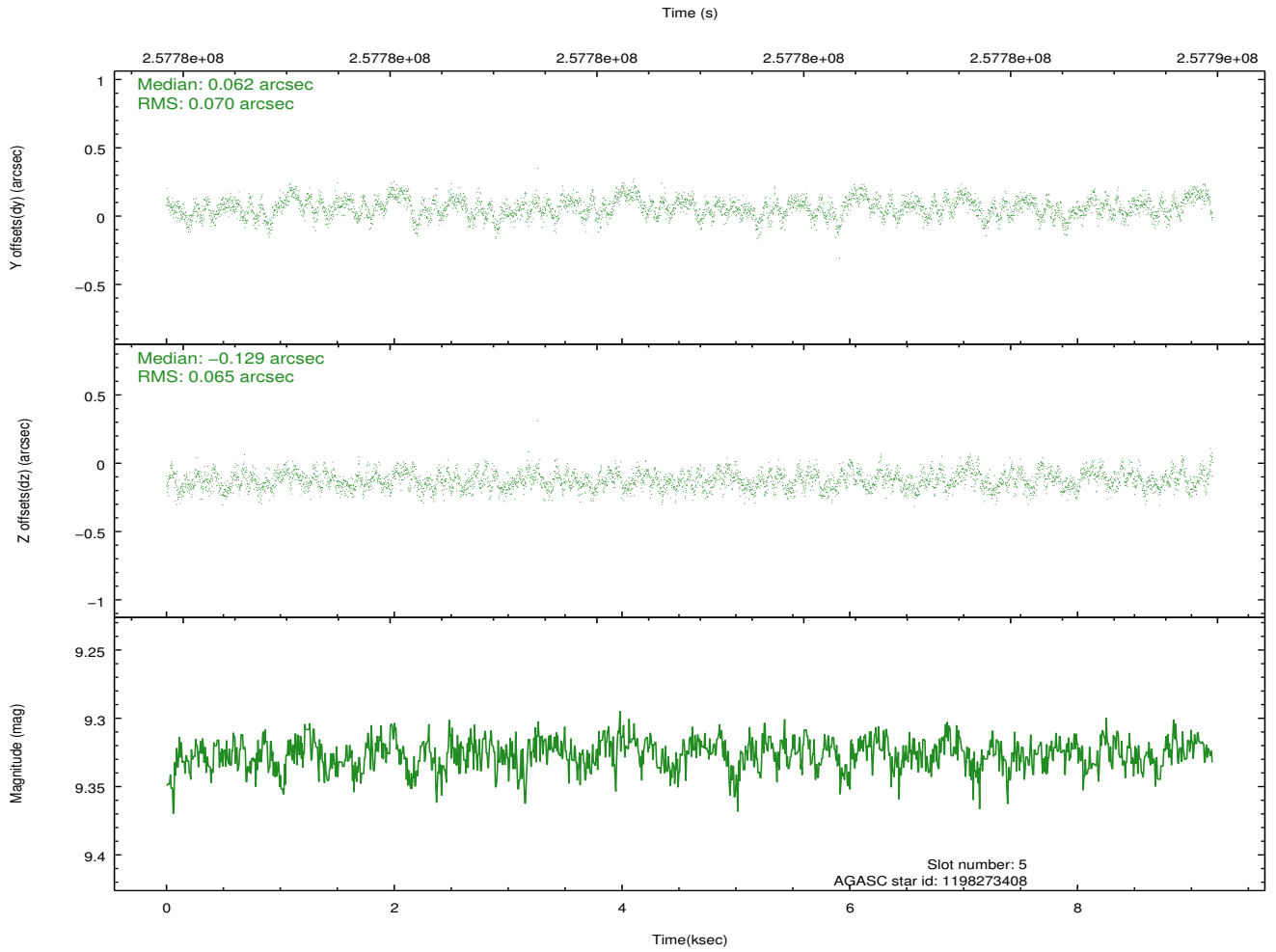
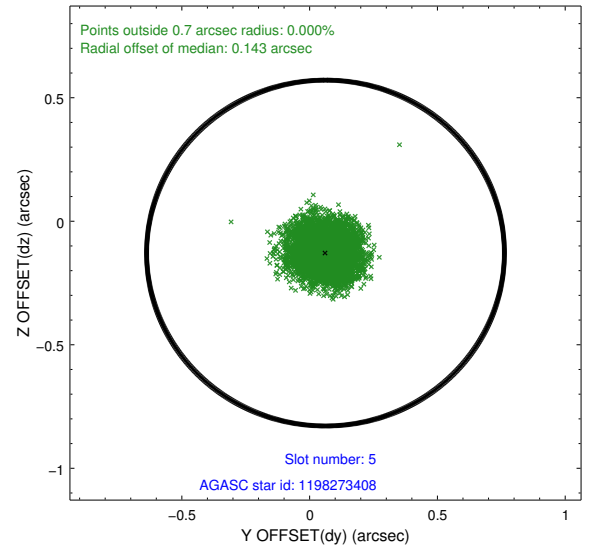
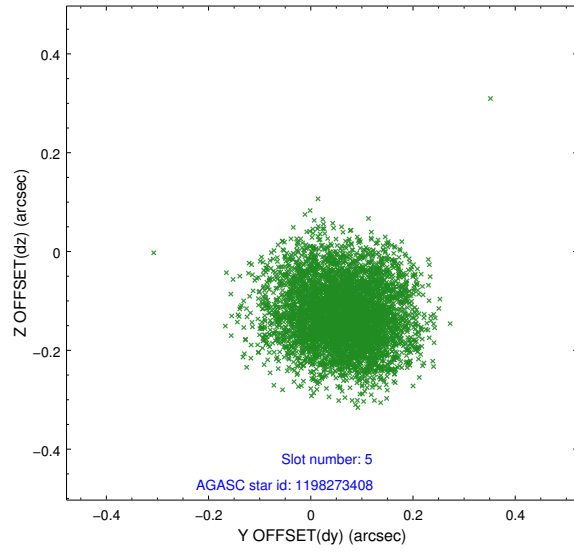
2.4.1 Slot 3



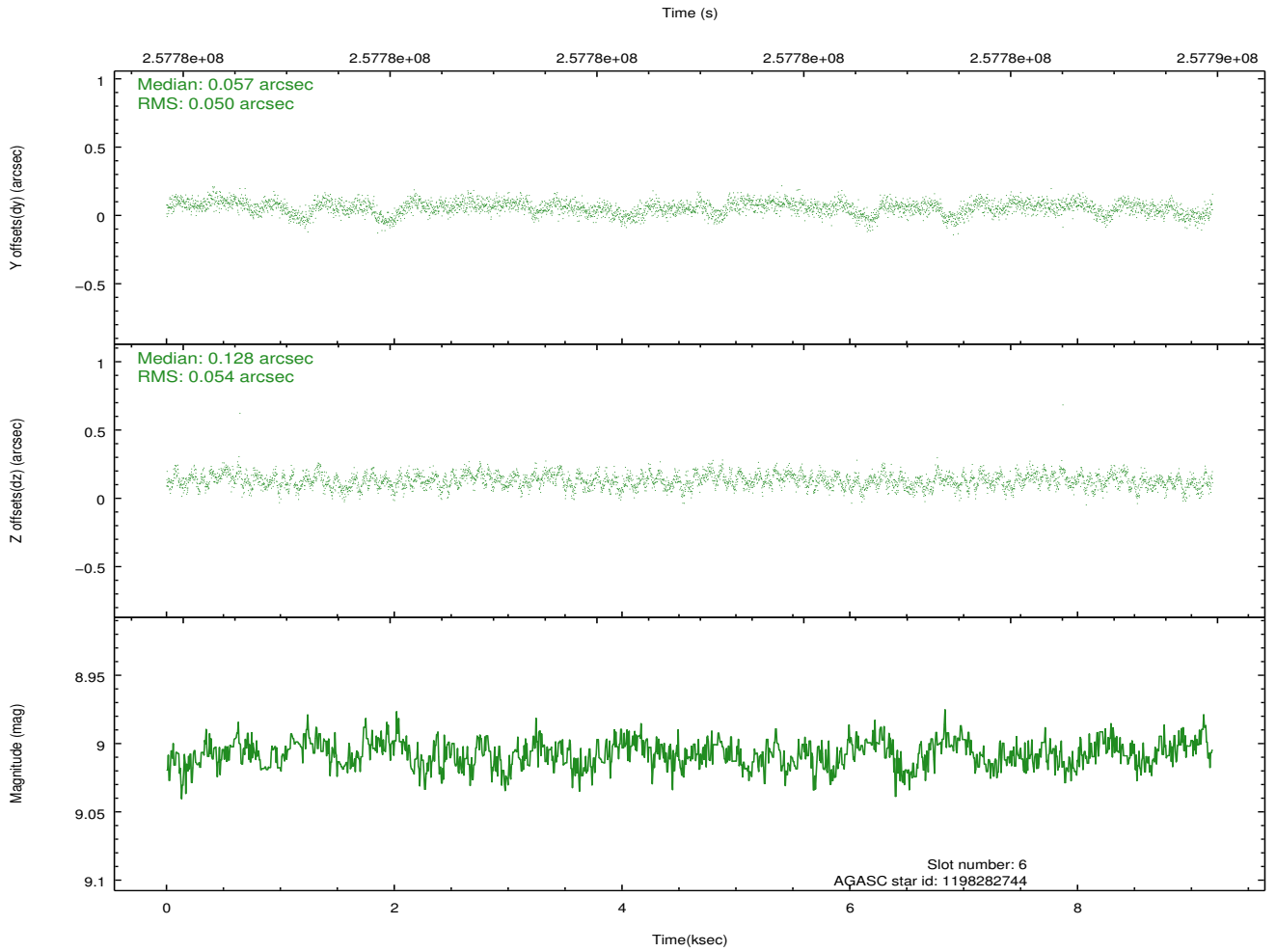
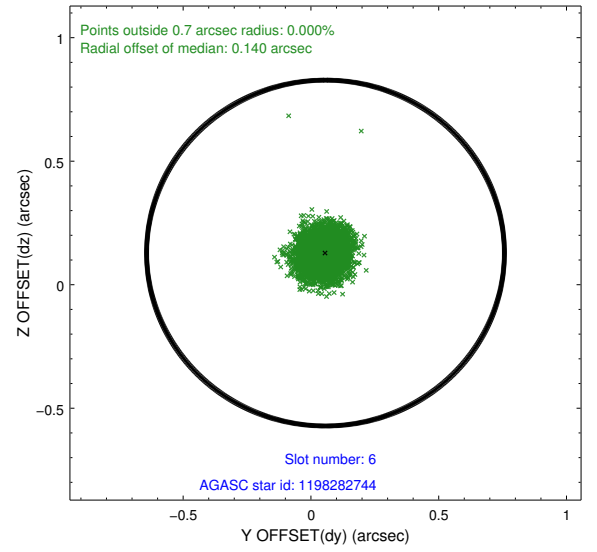
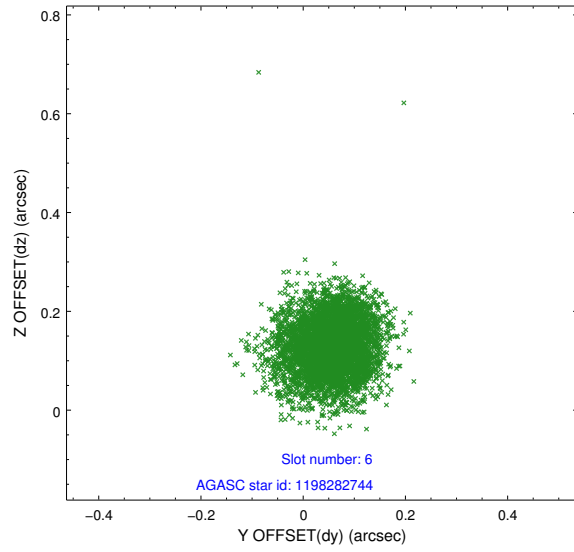
2.4.2 Slot 4



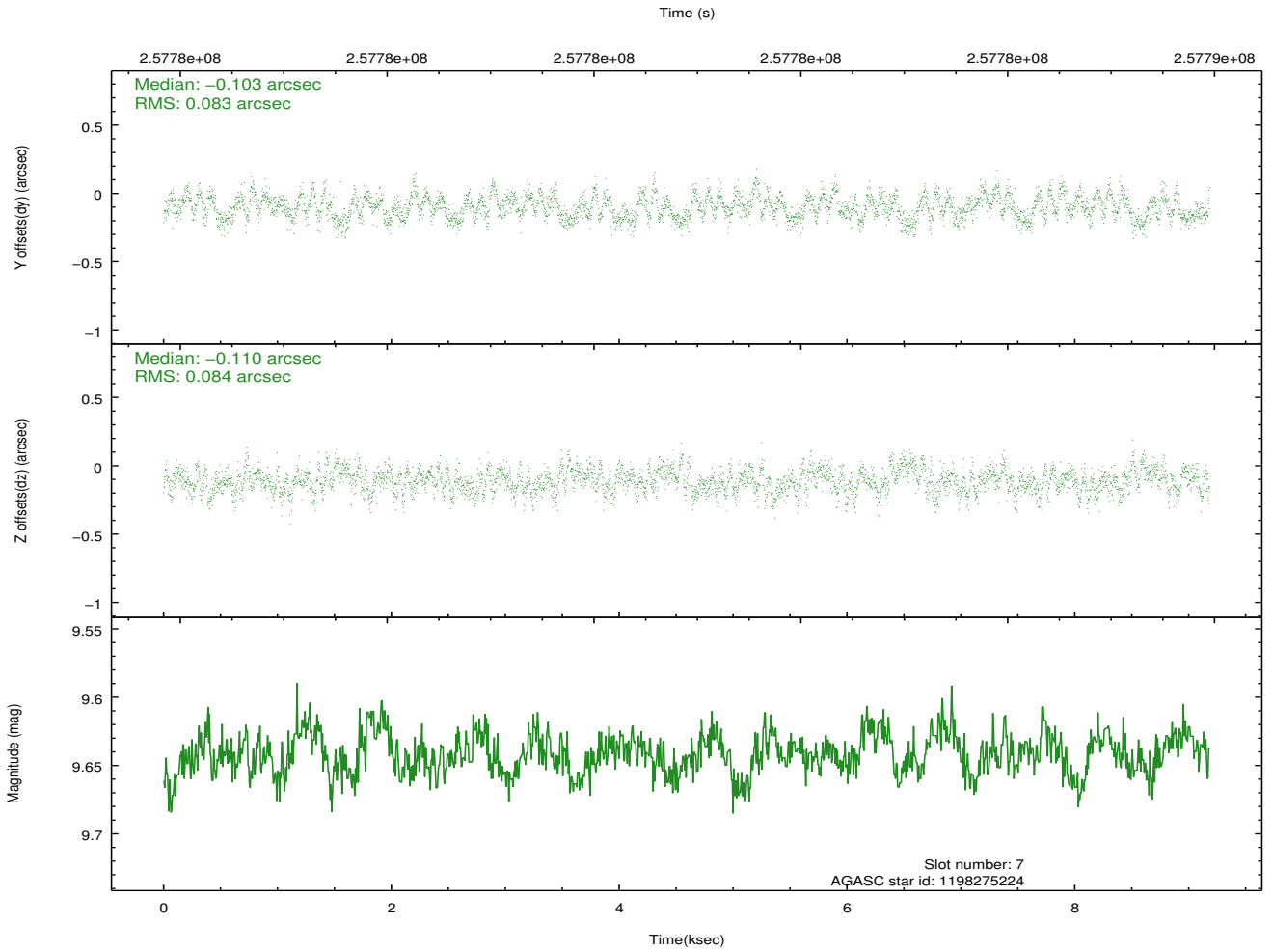
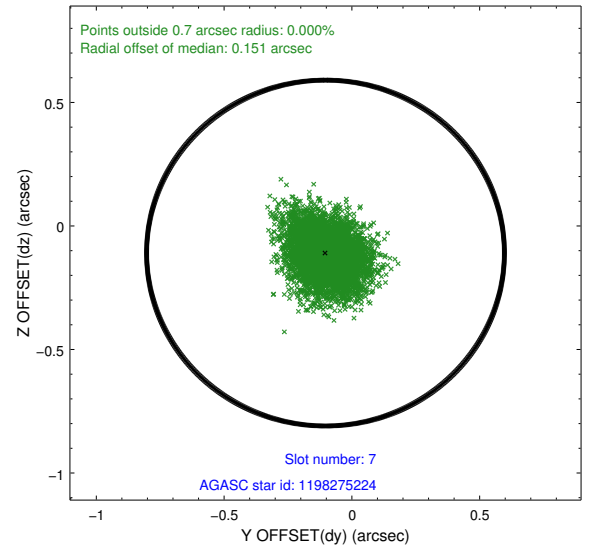
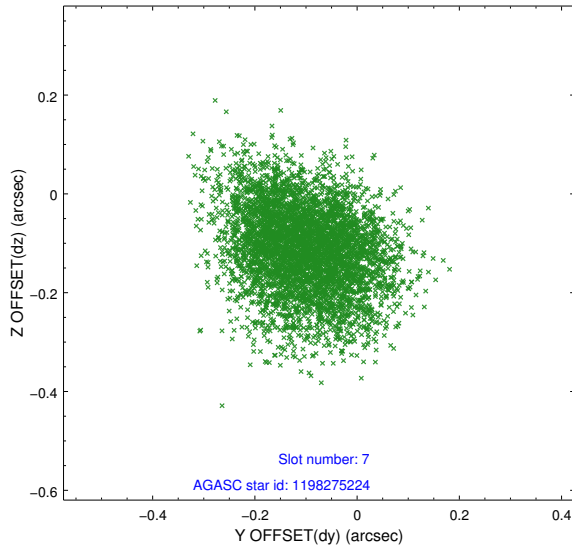
2.4.3 Slot 5



2.4.4 Slot 6

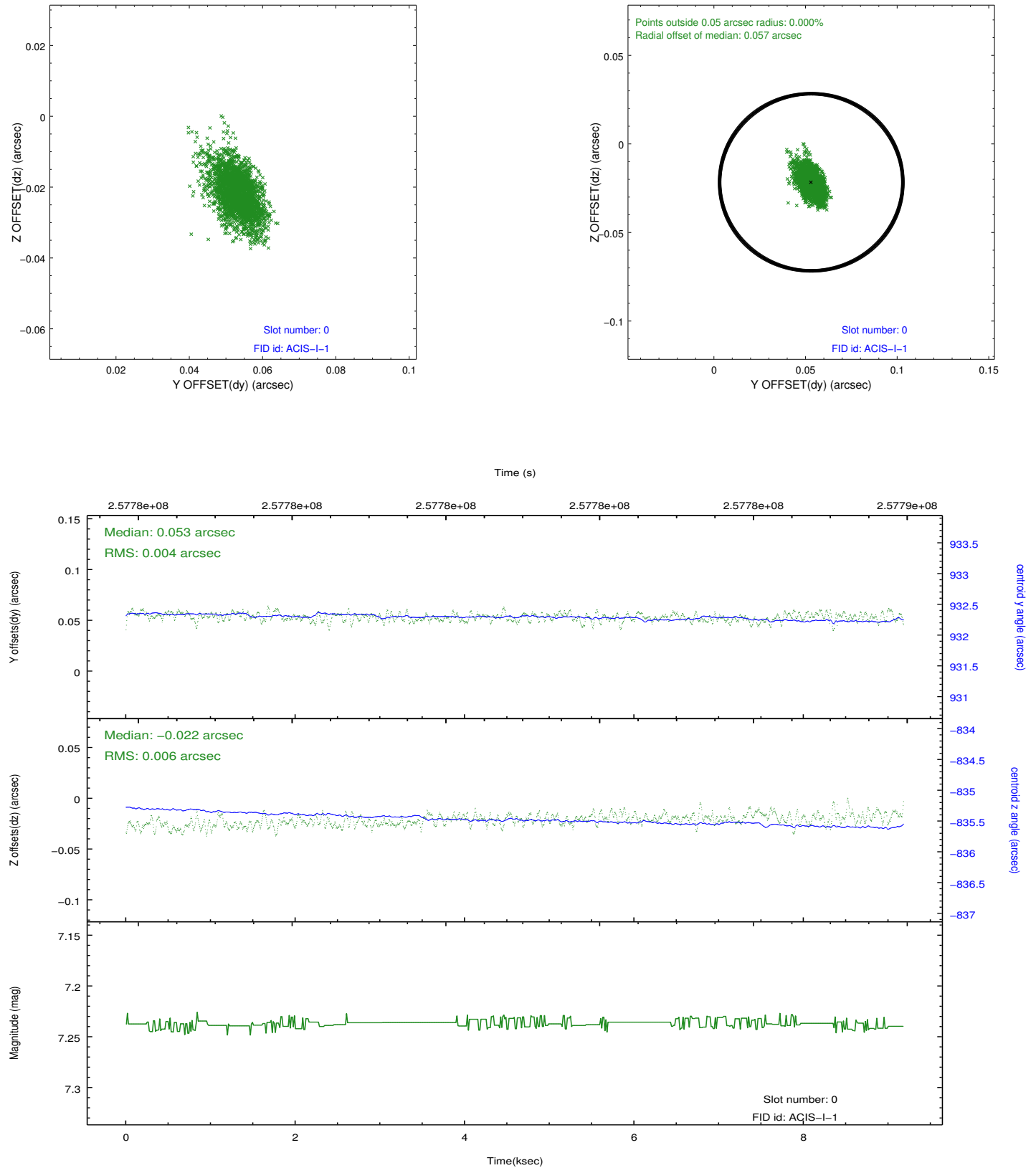


2.4.5 Slot 7

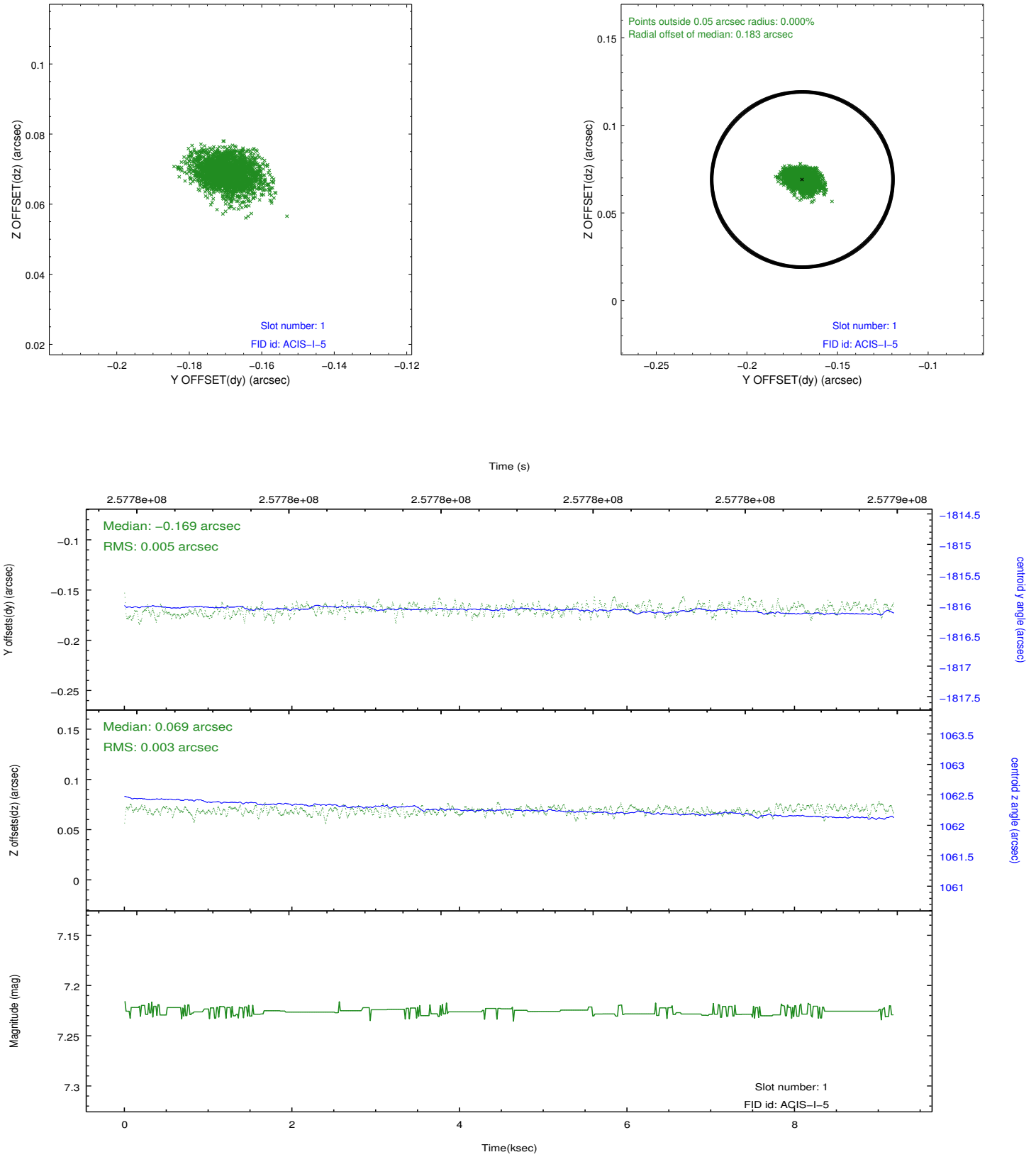


2.5 FID Slots

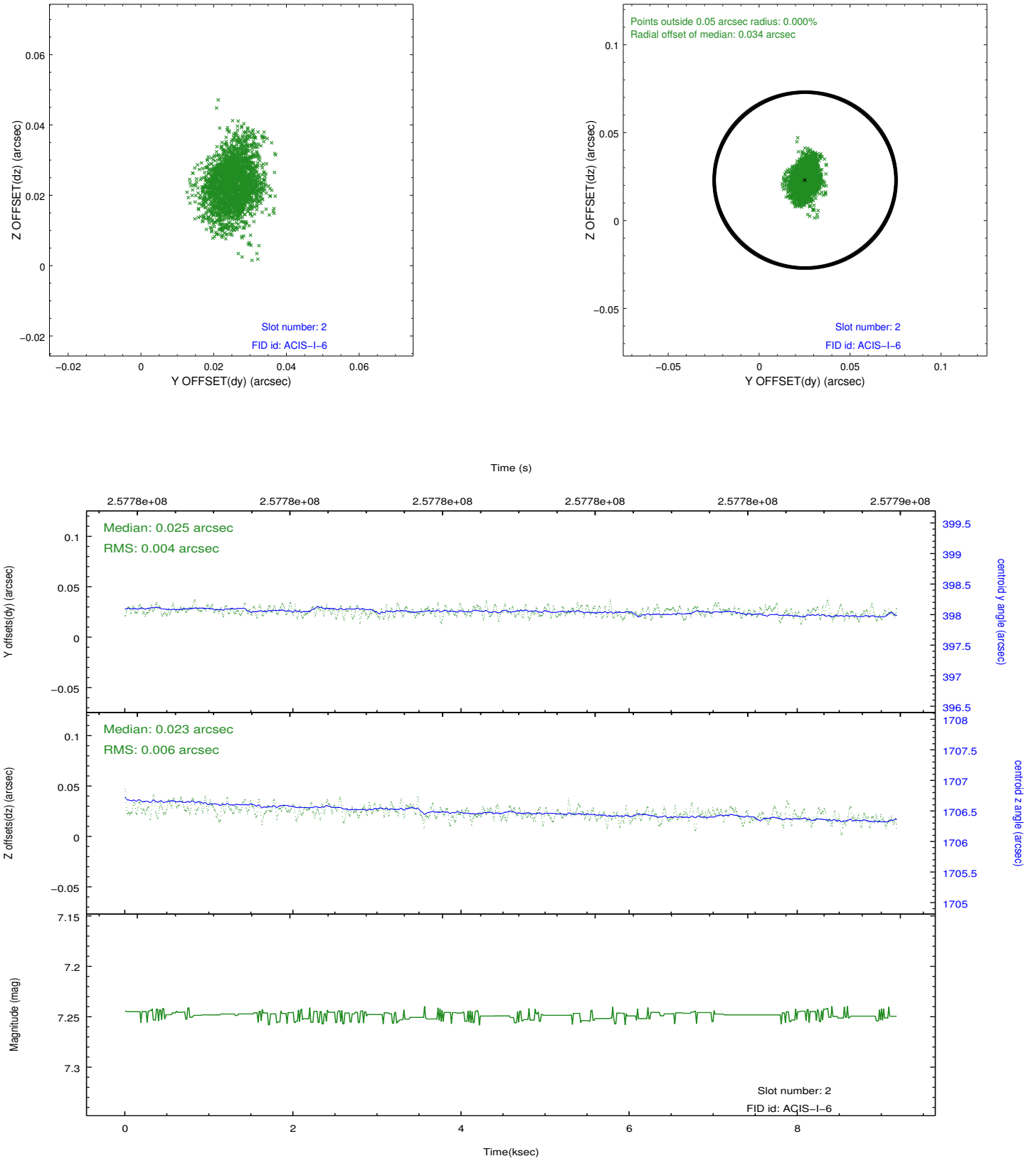
2.5.1 Slot 0



2.5.2 Slot 1



2.5.3 Slot 2



A Summary

A.1 Status

V&V Scientist	Jen Lauer
V&V Date (YYYY-MM-DD)	2012.03.28
V&V Edition	1
V&V Disposition and Status	OK
V&V Charge Time	8.75519996

A.2 Comments