

V&V Reference Report

L2 ASCDS Version : 8.5.1.1

Observation 5492 - L2 Version 3
Chandra X-Ray Center

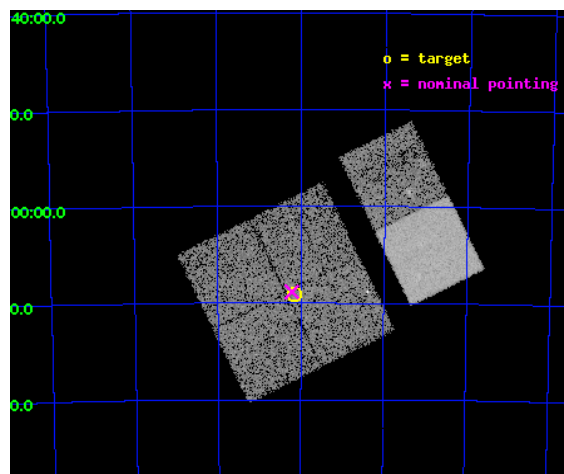
L2 Processing Date : Dec 27 2012

Contents

1	Front	2
2	OBI	3
2.1	OBI	3
2.1.1	Images	3
2.1.2	Bias	3
2.1.3	Parameters	4
2.1.4	Events	4
2.2	Compared Parameters	5
2.3	Aspect	6
2.4	Star Slots	9
2.4.1	Slot 3	9
2.4.2	Slot 4	10
2.4.3	Slot 5	11
2.4.4	Slot 6	12
2.4.5	Slot 7	13
2.5	FID Slots	14
2.5.1	Slot 0	14
2.5.2	Slot 1	15
2.5.3	Slot 2	16
A	Summary	17
A.1	Status	17
A.2	Comments	17

1 Front

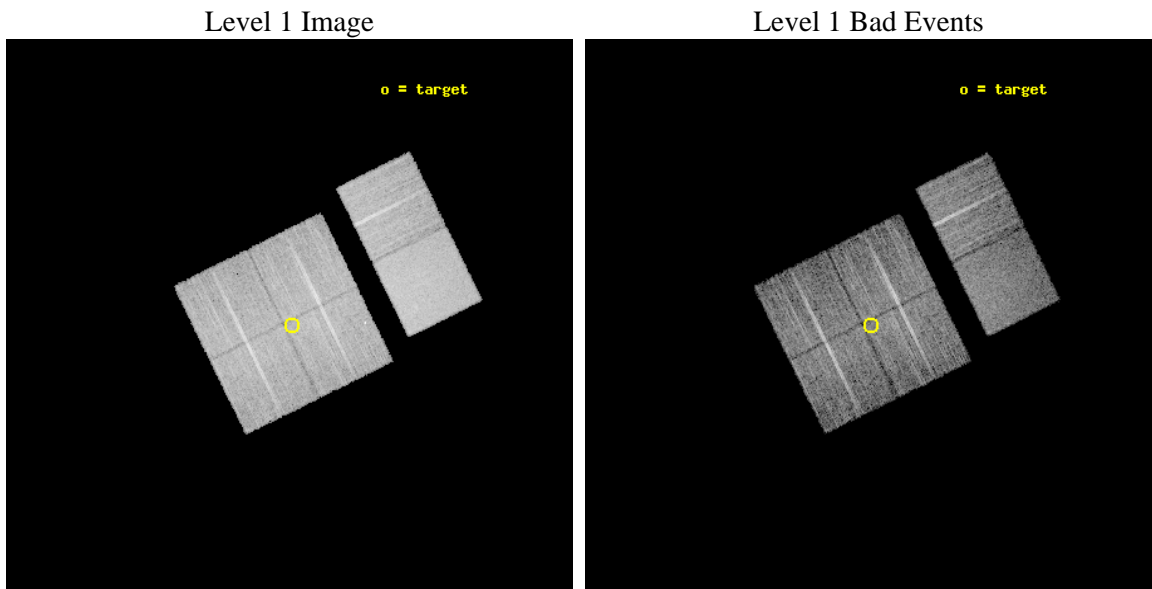
seq_num	400422	Sequence number
obs_id	5492	Observation id
title	Discovering X-ray pulsars in the Wing of the Small Magellanic Cloud	
observer	Prof Malcolm Coe	Principal investigator
object	SMCwing 13	Source name
dtcycle	0	
cycle	P	events from which exps? Prim/Second/Both
ra_targ	21.041667	Observer's specified target RA [deg]
dec_targ	-73.150556	Observer's specified target Dec [deg]
ra_nom	21.053674270917	Nominal RA [deg]
dec_nom	-73.147474346752	Nominal Dec [deg]
roll_nom	63.752987308425	Nominal Roll [deg]
revision	3	Processing version of data
ontime	10185.599962056	Sum of GTIs [s]
livetime	10056.623762304	Livetime [s]
ontime0	10185.599962056	Sum of GTIs [s]
ontime1	10185.599962056	Sum of GTIs [s]
ontime2	10185.599962056	Sum of GTIs [s]
ontime3	10185.599962056	Sum of GTIs [s]
ontime6	10185.599962056	Sum of GTIs [s]
ontime7	10185.599962056	Sum of GTIs [s]
l2events	79609	Number of level 2 events



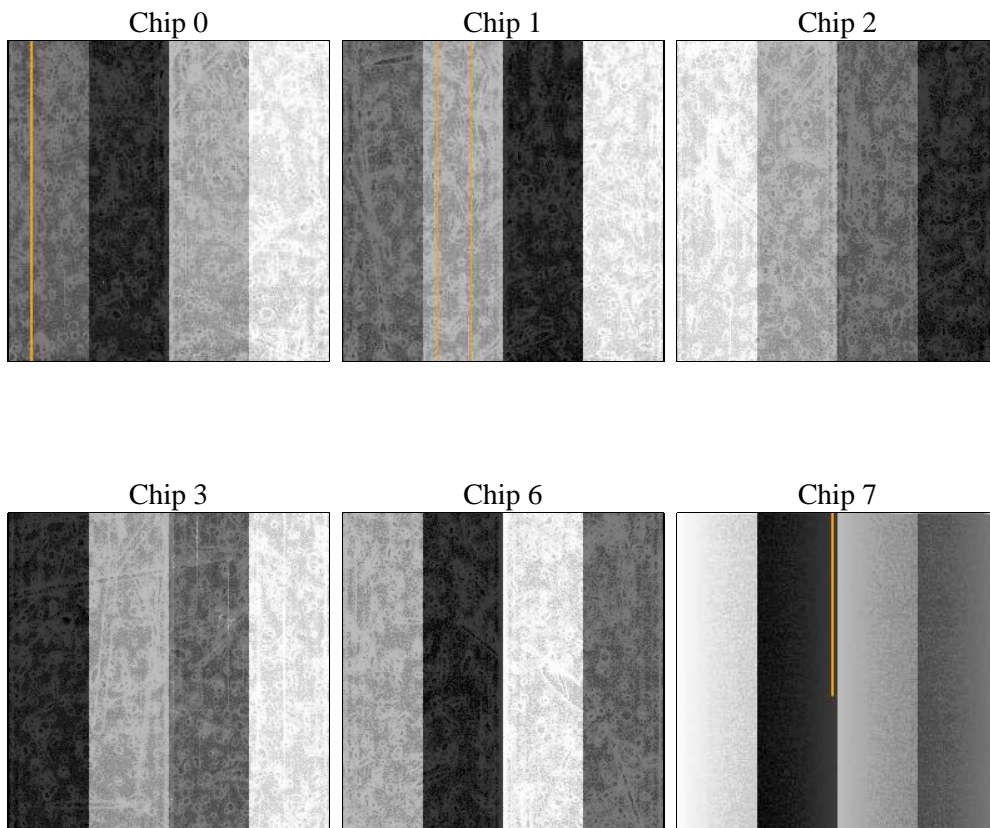
2 OBI

2.1 OBI

2.1.1 Images



2.1.2 Bias



2.1.3 Parameters

obi_num	0	Obi number	sched_exp_time	10000.000000	[s] Scheduled observation exposure time
ascdsver	8.5.1.1	Processing system revision	ontime	10185.599962056	Sum of GTIs [s]
caldsver	4.5.5	 	ontime0	10185.599962056	Sum of GTIs [s]
date	2012-12-27T04:26:19	Date and time of file creation	ontime1	10185.599962056	Sum of GTIs [s]
revision	3	Processing version of data	ontime2	10185.599962056	Sum of GTIs [s]
			ontime3	10185.599962056	Sum of GTIs [s]
			ontime6	10185.599962056	Sum of GTIs [s]
			ontime7	10185.599962056	Sum of GTIs [s]
			l1events	531958	Number of level 1 events

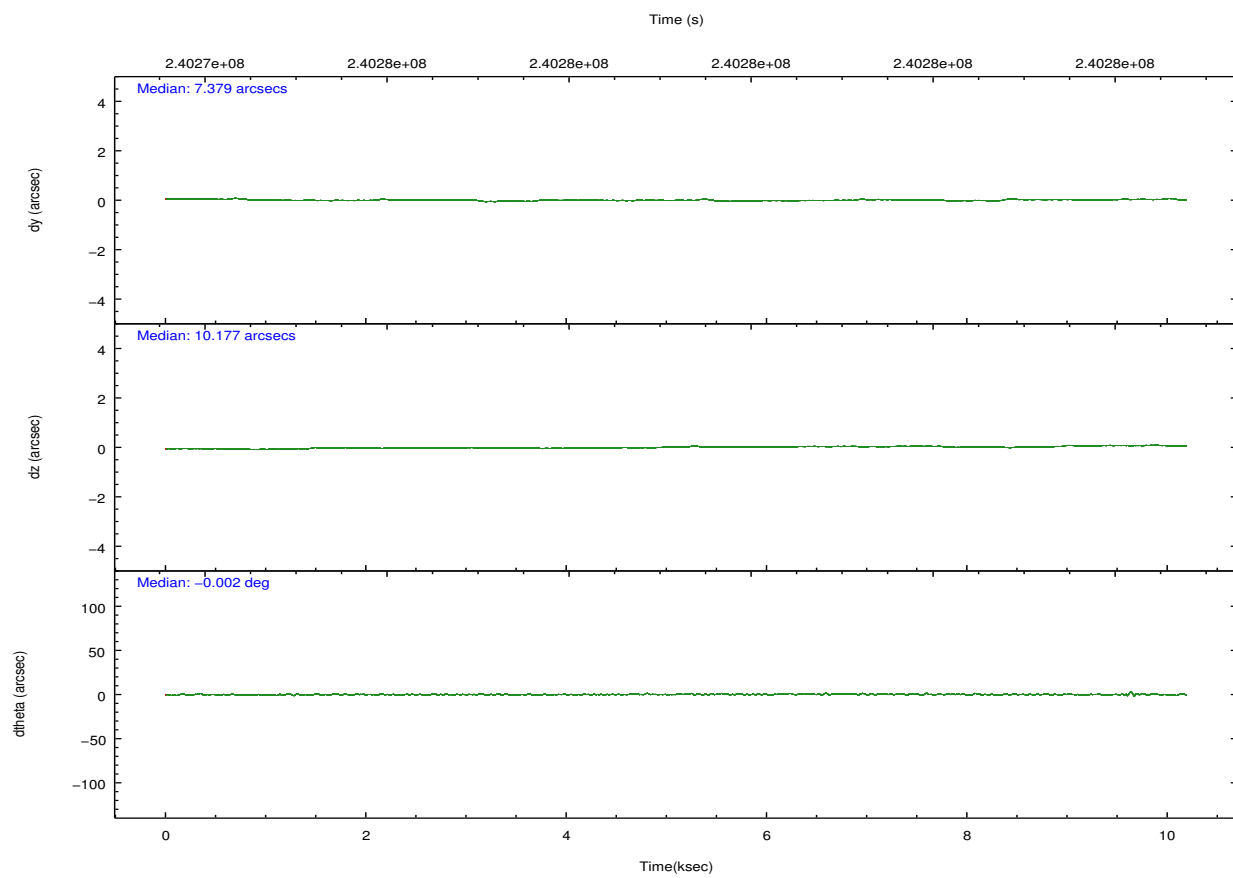
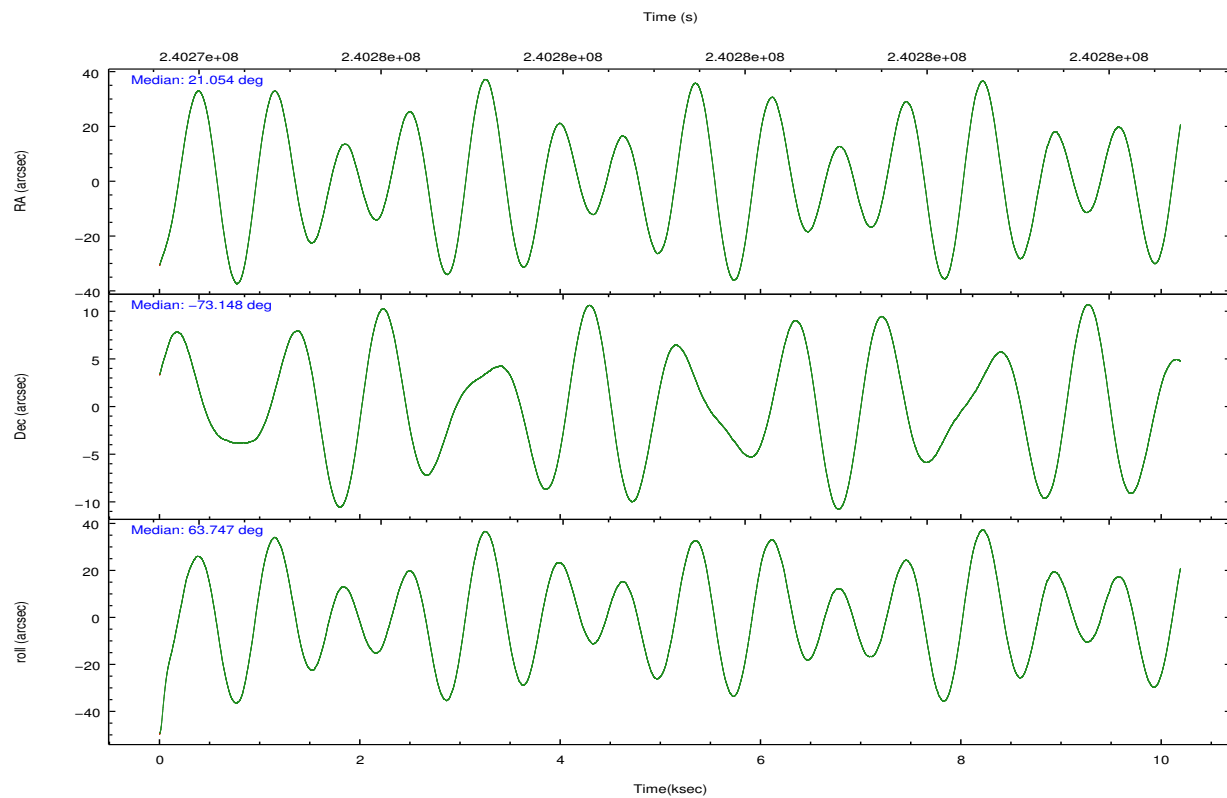
2.1.4 Events

	ccd 0	ccd 1	ccd 2	ccd 3	ccd 6	ccd 7		ccd 0	ccd 1	ccd 2	ccd 3	ccd 6	ccd 7
level 1 events	78837	78521	85098	84920	87986	116596	grade 0 events	4349	4273	4213	4566	4110	4309
rejected events	69839	69205	76530	75861	78925	74896		5%	5%	4%	5%	4%	3%
rejected %	88%	88%	89%	89%	89%	64%	grade 1 events	31	49	53	81	43	111
								0%	0%	0%	0%	0%	0%
							grade 2 events	2149	2379	2054	2044	2216	9473
								2%	3%	2%	2%	2%	8%
							grade 3 events	1037	1049	971	1011	997	4175
								1%	1%	1%	1%	1%	3%
							grade 4 events	934	1043	975	1076	974	4134
								1%	1%	1%	1%	1%	3%
							grade 5 events	3483	3613	3318	3920	4098	11153
								4%	4%	3%	4%	4%	9%
							grade 6 events	1866	2070	1669	1760	2141	26038
								2%	2%	1%	2%	2%	22%
							grade 7 events	64988	64045	71845	70462	73407	57203
								82%	81%	84%	82%	83%	49%

2.2 Compared Parameters

Parameter	Planned	Actual	Parameter	Planned	Actual
Instrument	ACIS	ACIS	Obspar format version number	7	7
Detector	ACIS-012367	ACIS-012367	Obspar file type	PREDICTED	ACTUAL
Grating	NONE	NONE	Obspar update status	NONE	UPDATED
Data mode	FAINT	FAINT	Number of optional ACIS chips dropped	0	0
Observation mode	POINTING	POINTING	On-chip summing requested	N	N
[deg] Pointing RA	21.060358	21.05367427091664	Subarray requested	NONE	NONE
[deg] Pointing Dec	-73.174844	-73.14747434675172	Alternating exposures requested	N	N
[deg] Pointing Roll	63.550724	63.75298730842526	[s] Primary exposure time	0.000000	3.2
[mm] SIM focus pos	-0.782348	-0.7809083437167272			
[mm] SIM defocus	0	0.001439871863259334			
[mm] SIM translation stage pos	-233.592463	-233.5874344608287			
[mm] SIM translation stage offset	0	-0.005018542100998502			
[s] Observation start time (MET)	240274273.184000	240272287.90426			
Observation start date	2005-08-12T22:50:09	2005-08-12T22:18:07			
[s] Observation end time (MET)	240284273.184000	240285080.92985			
Observation end date	2005-08-13T01:36:49	2005-08-13T01:51:20			
Read mode	TIMED	TIMED			

2.3 Aspect

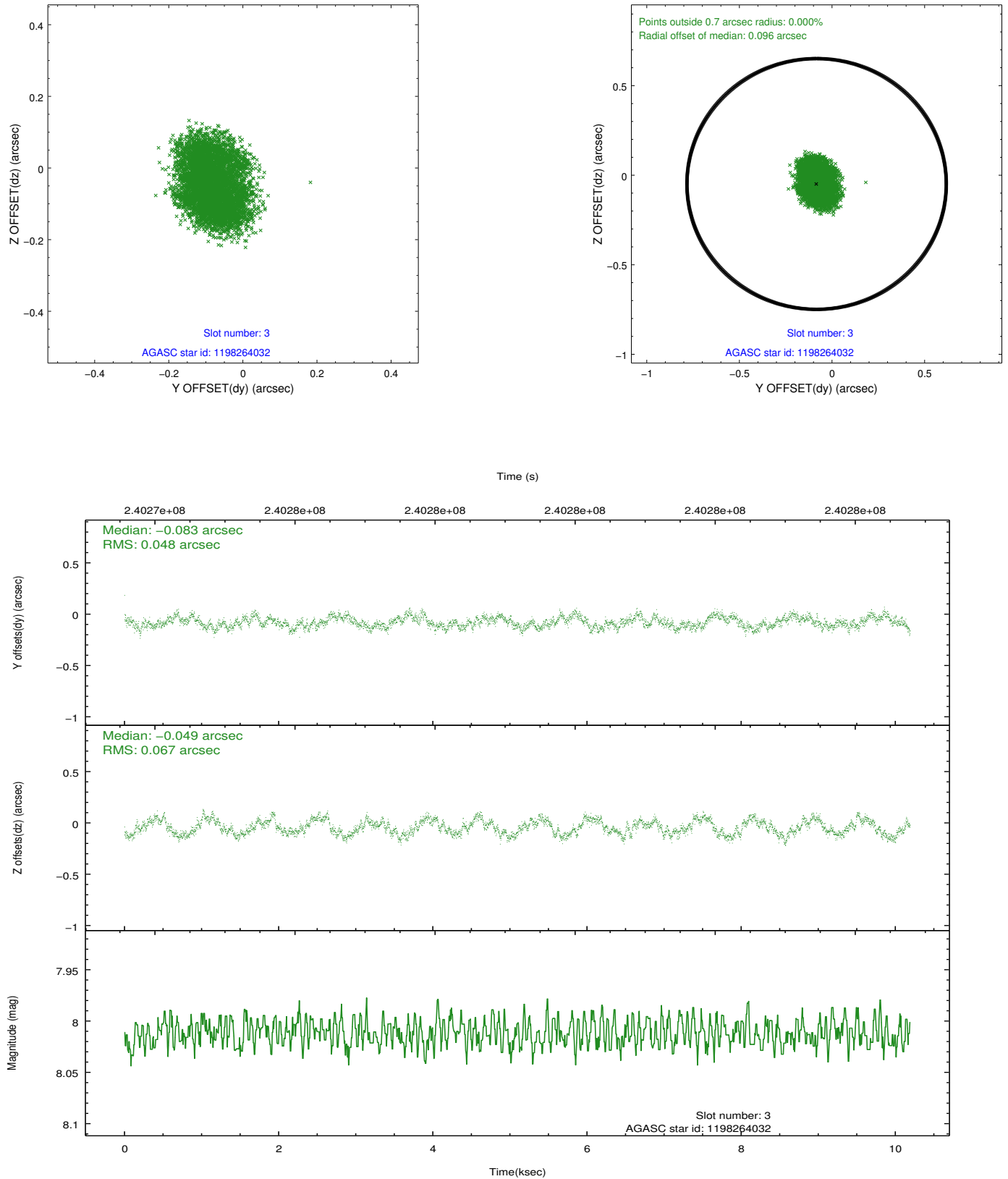


Slot Statistics

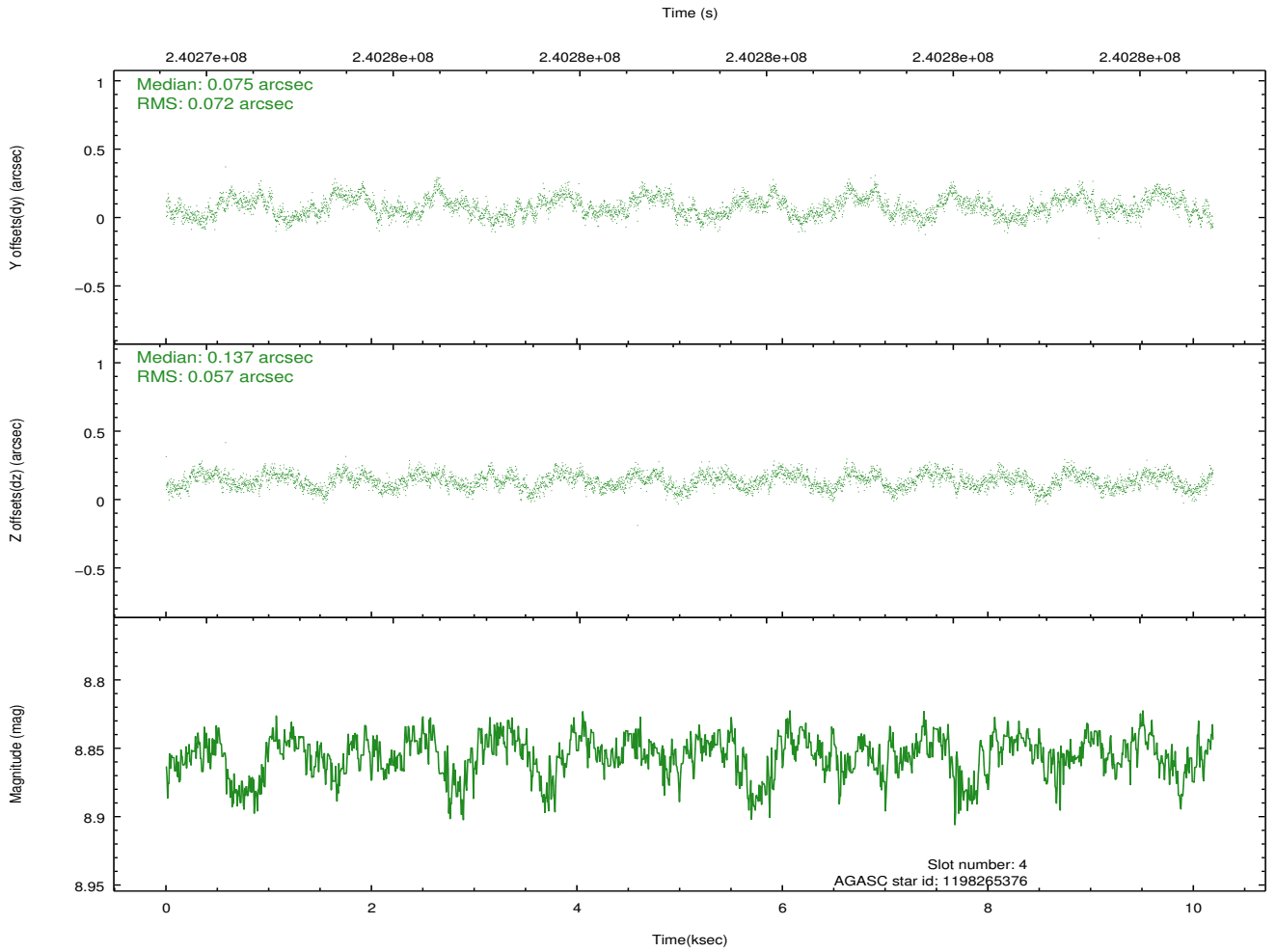
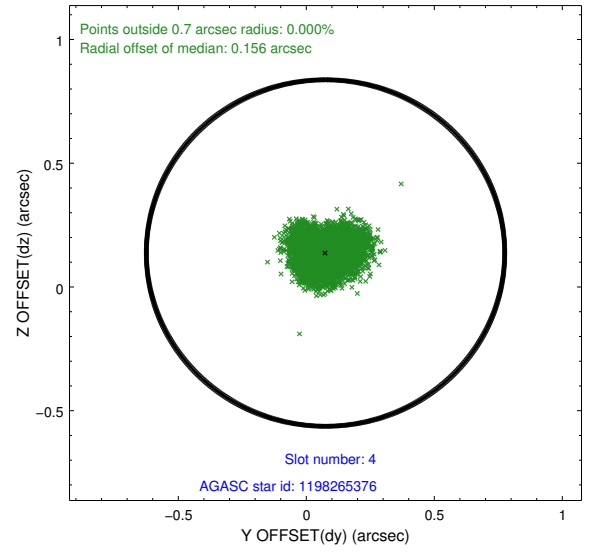
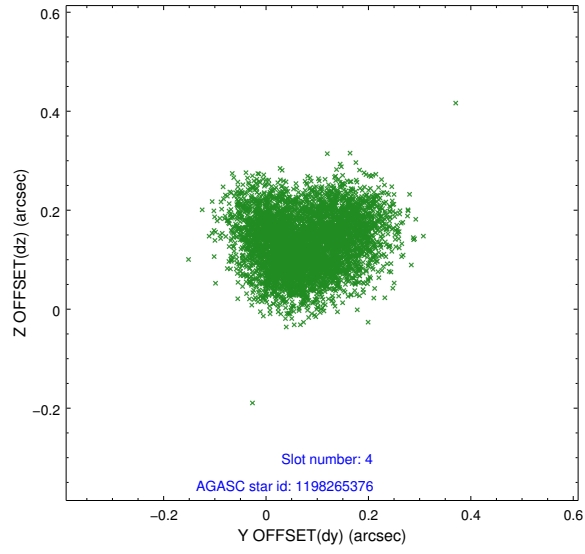
slot	status	id	mag	n_pts	med_dy	med_dz	dr1	dr2	ra	dec	mean_y	mean_z
0	FID	ACIS-I-1	7.24	2486	0.012	0.005	0.007	0.013	0.000000	0.000000	932.30	-833.65
1	FID	ACIS-I-5	7.23	2486	-0.168	0.028	0.006	0.011	0.000000	0.000000	-1815.70	1063.61
2	FID	ACIS-I-6	7.25	2486	0.065	0.037	0.007	0.011	0.000000	0.000000	397.34	1708.71
3	GUIDE	1198264032	8.01	4972	-0.083	-0.049	0.091	0.134	22.563131	-73.173817	683.12	-1408.88
4	GUIDE	1198265376	8.85	4967	0.075	0.137	0.099	0.152	21.649225	-72.748973	1650.57	118.30
5	GUIDE	1198269920	8.26	4962	-0.133	-0.074	0.089	0.129	20.316466	-73.033728	102.82	923.64
6	GUIDE	1198272400	9.18	4970	0.016	0.105	0.111	0.161	20.411923	-73.620598	-1732.94	-126.82
7	GUIDE	1198263448	8.72	4970	0.125	-0.117	0.092	0.151	23.988893	-72.831877	2423.32	-2269.11

2.4 Star Slots

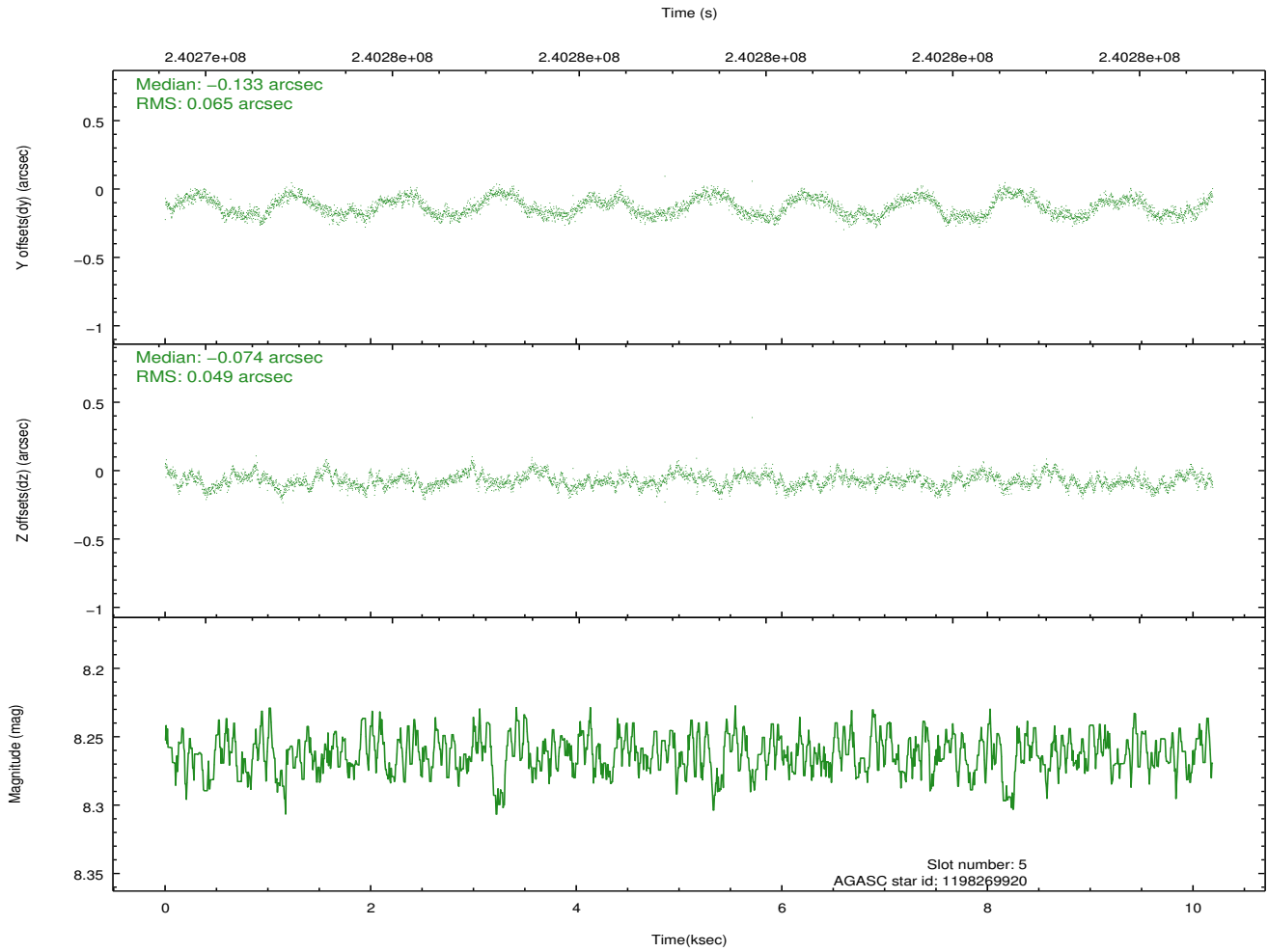
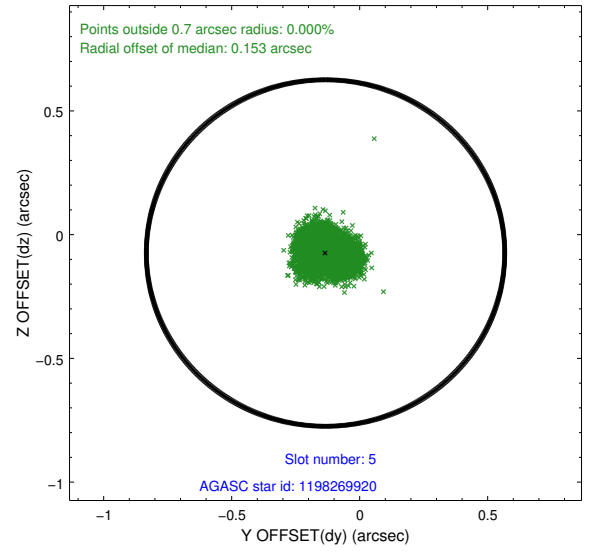
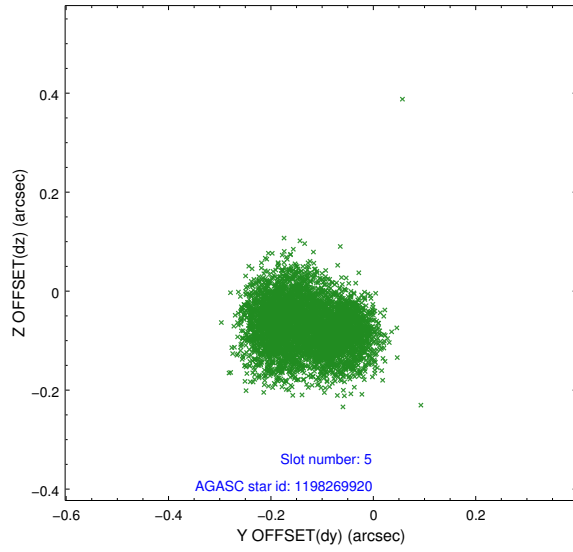
2.4.1 Slot 3



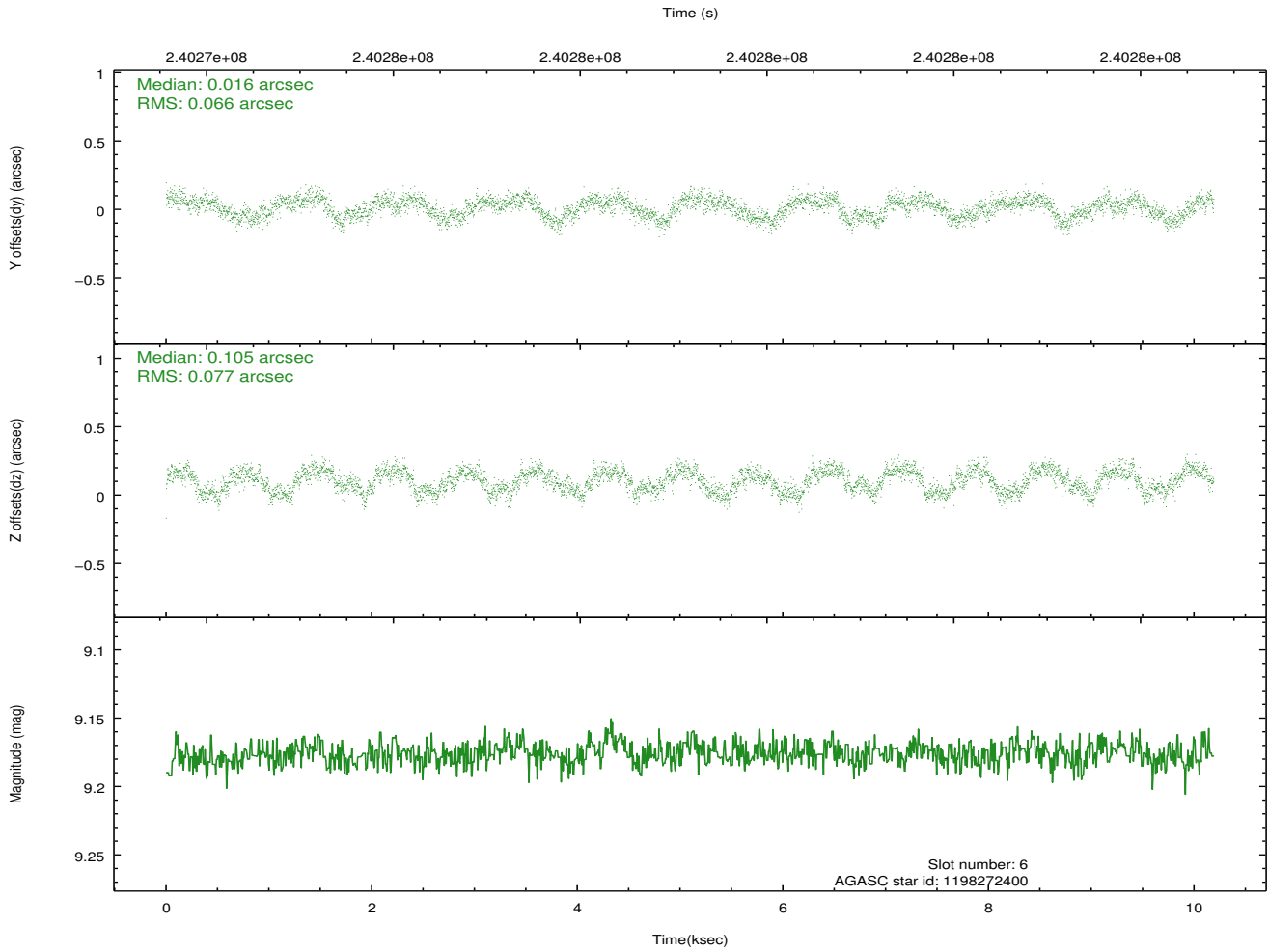
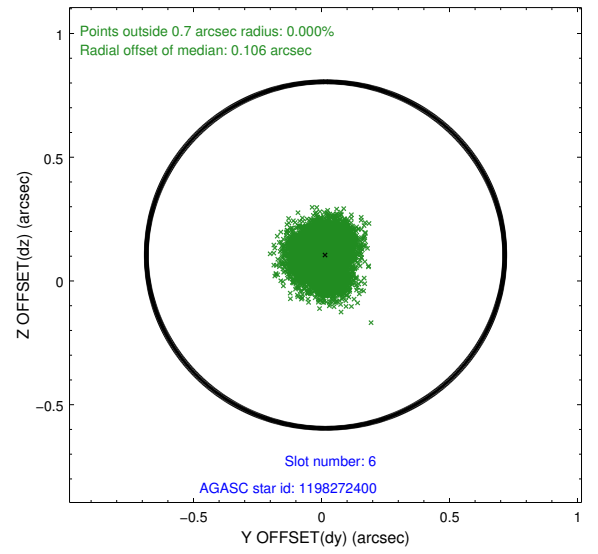
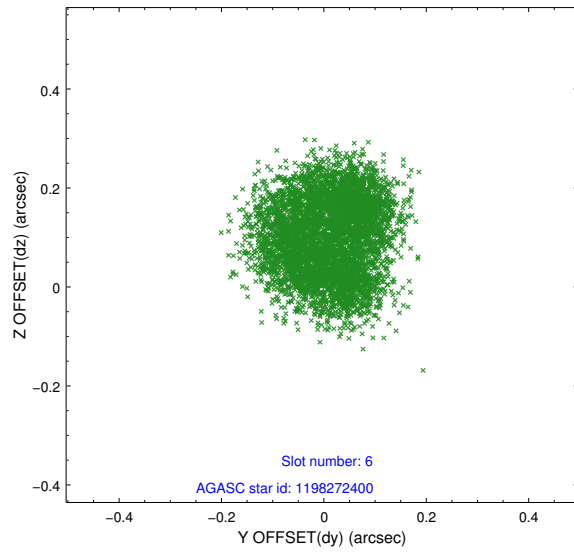
2.4.2 Slot 4



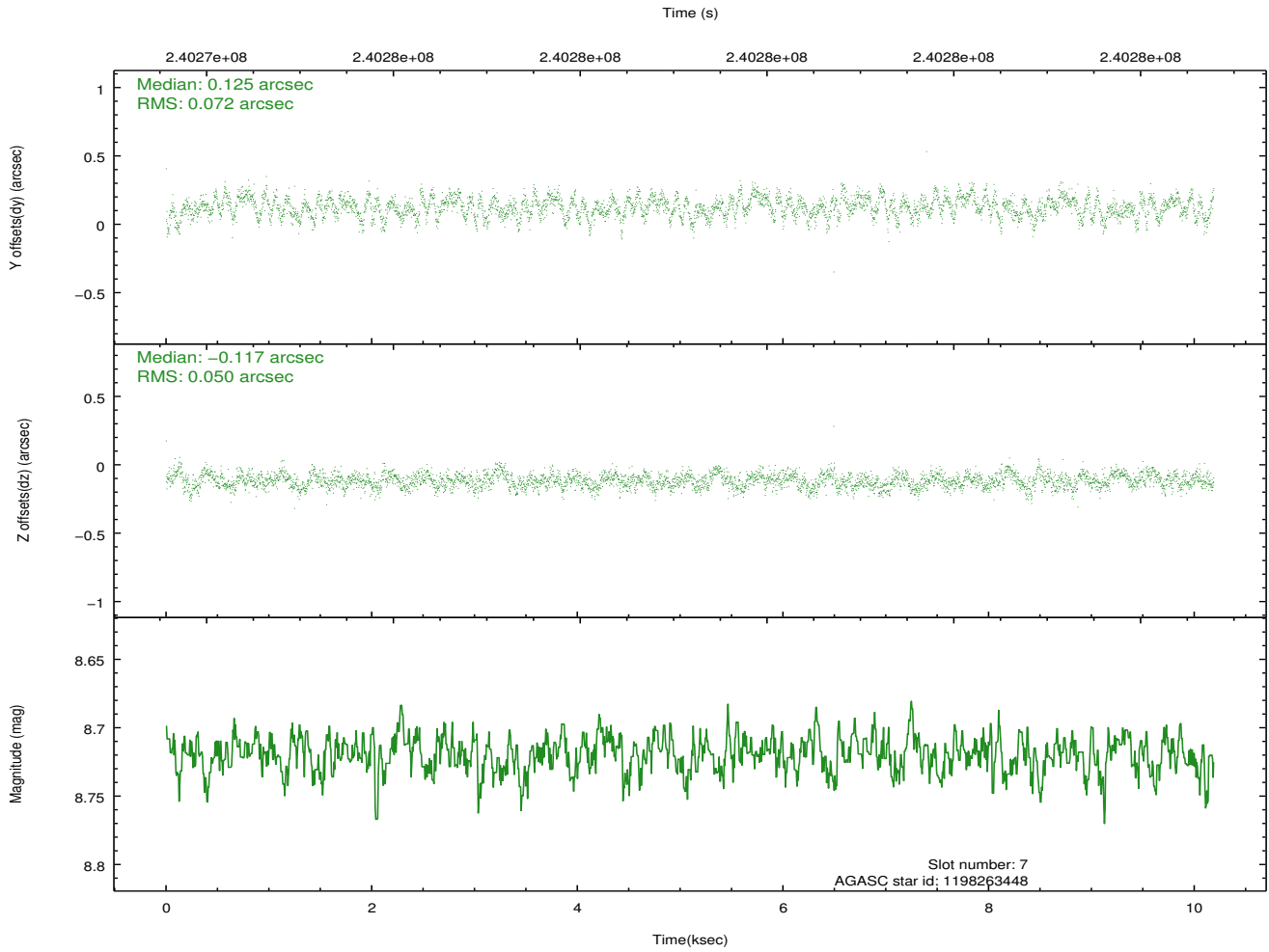
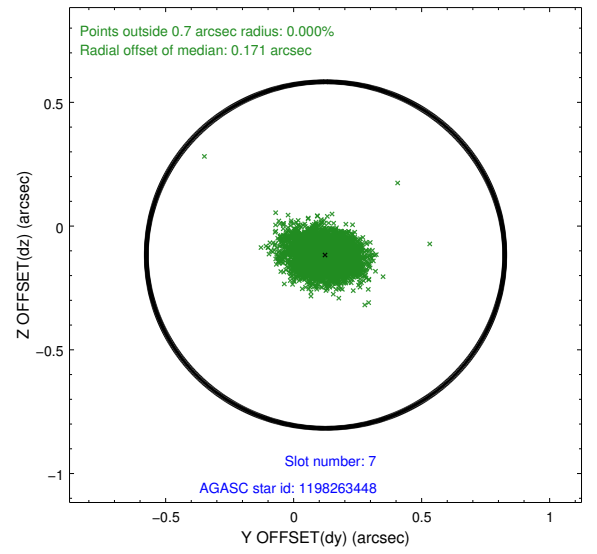
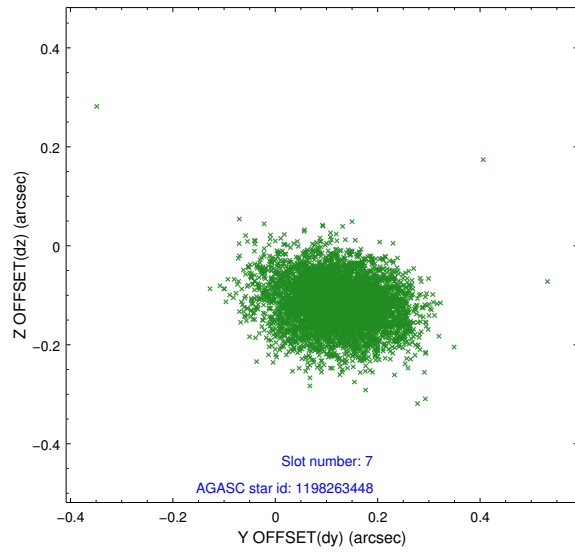
2.4.3 Slot 5



2.4.4 Slot 6

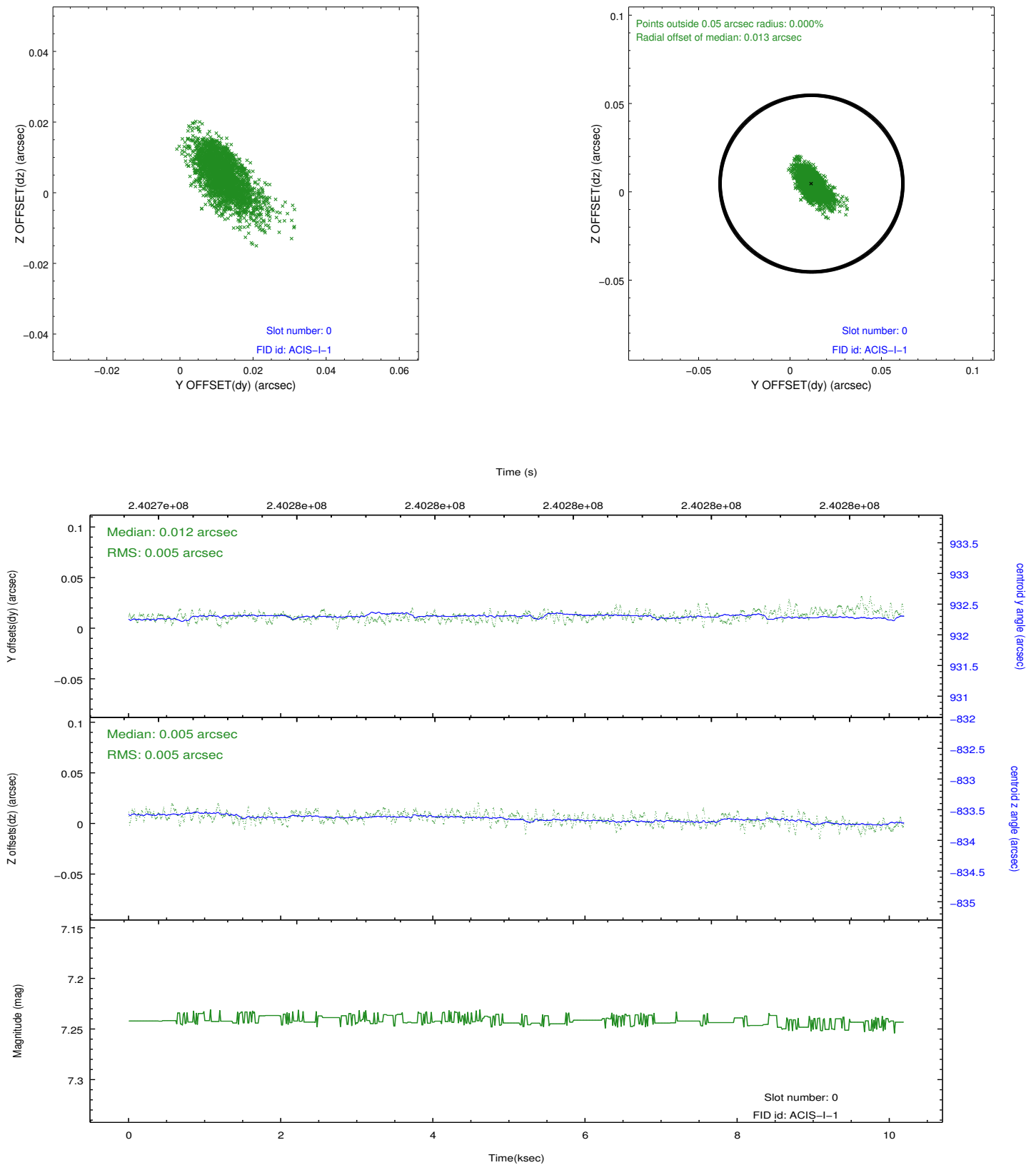


2.4.5 Slot 7

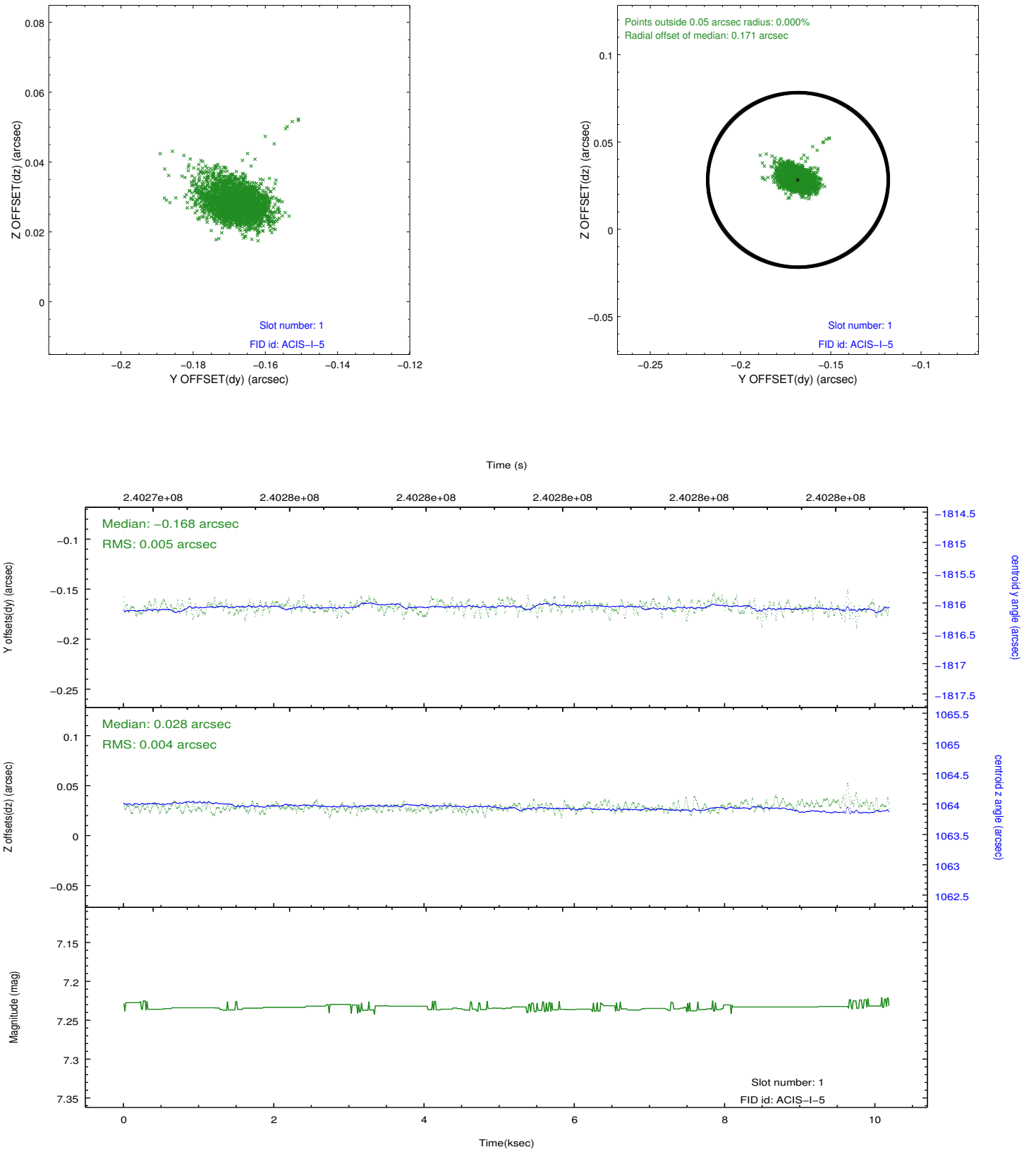


2.5 FID Slots

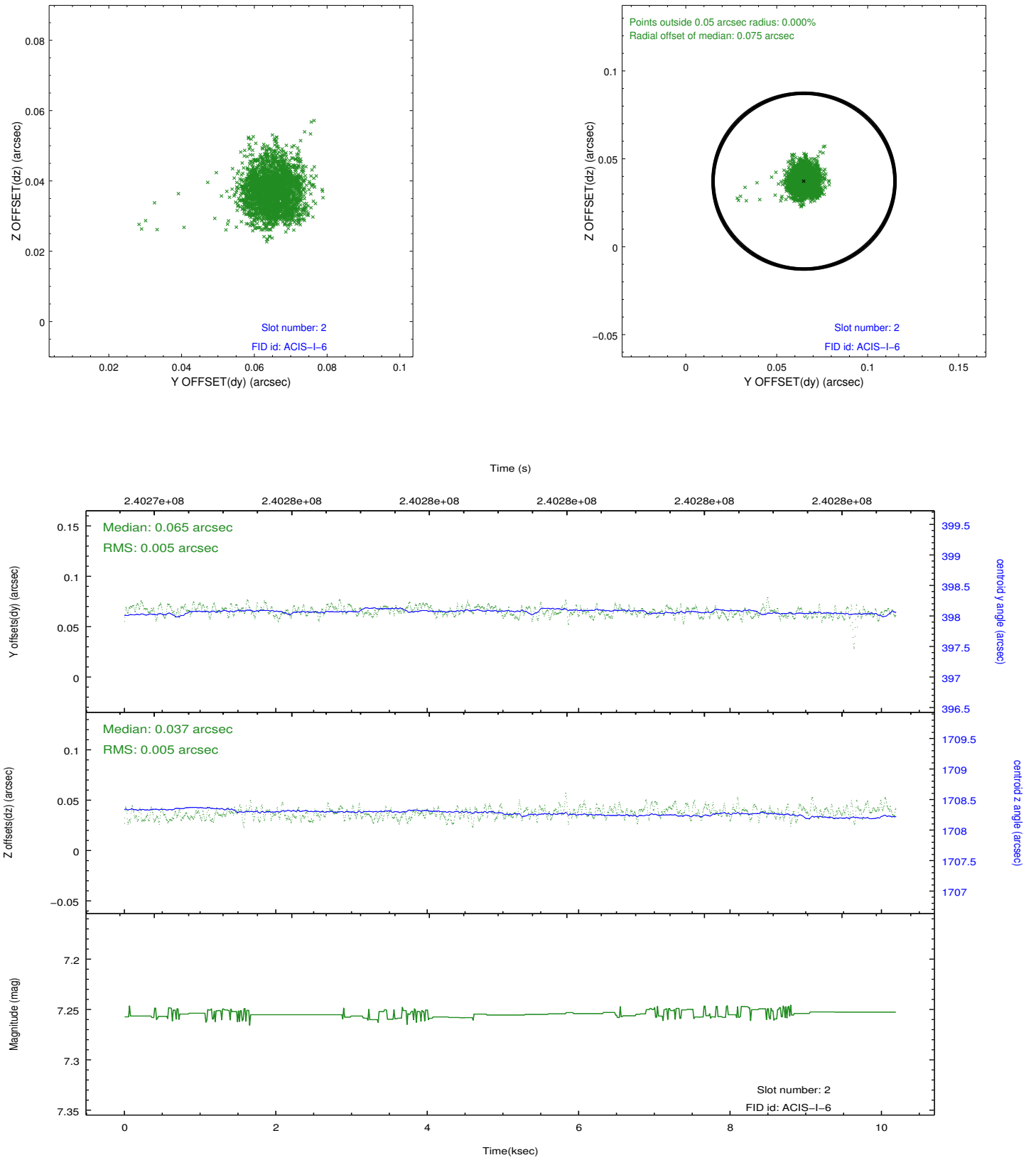
2.5.1 Slot 0



2.5.2 Slot 1



2.5.3 Slot 2



A Summary

A.1 Status

V&V Scientist	Beth Sundheim
V&V Date (YYYY-MM-DD)	2013.01.23
V&V Edition	1
V&V Disposition and Status	OK
V&V Charge Time	10.1855999

A.2 Comments