

V&V Reference Report

L2 ASCDS Version : 8.4.3.1

Observation 5486 - L2 Version 2
Chandra X-Ray Center

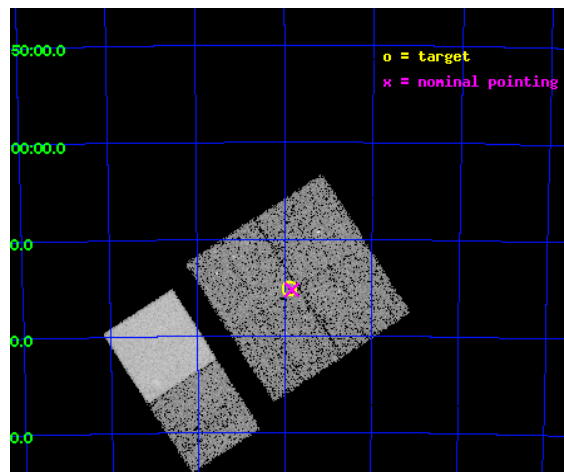
L2 Processing Date : Mar 25 2012

Contents

1	Front	2
2	OBI	3
2.1	OBI	3
2.1.1	Images	3
2.1.2	Bias	3
2.1.3	Parameters	4
2.1.4	Events	4
2.2	Compared Parameters	5
2.3	Aspect	6
2.4	Star Slots	9
2.4.1	Slot 3	9
2.4.2	Slot 4	10
2.4.3	Slot 5	11
2.4.4	Slot 6	12
2.4.5	Slot 7	13
2.5	FID Slots	14
2.5.1	Slot 0	14
2.5.2	Slot 1	15
2.5.3	Slot 2	16
A	Summary	17
A.1	Status	17
A.2	Comments	17

1 Front

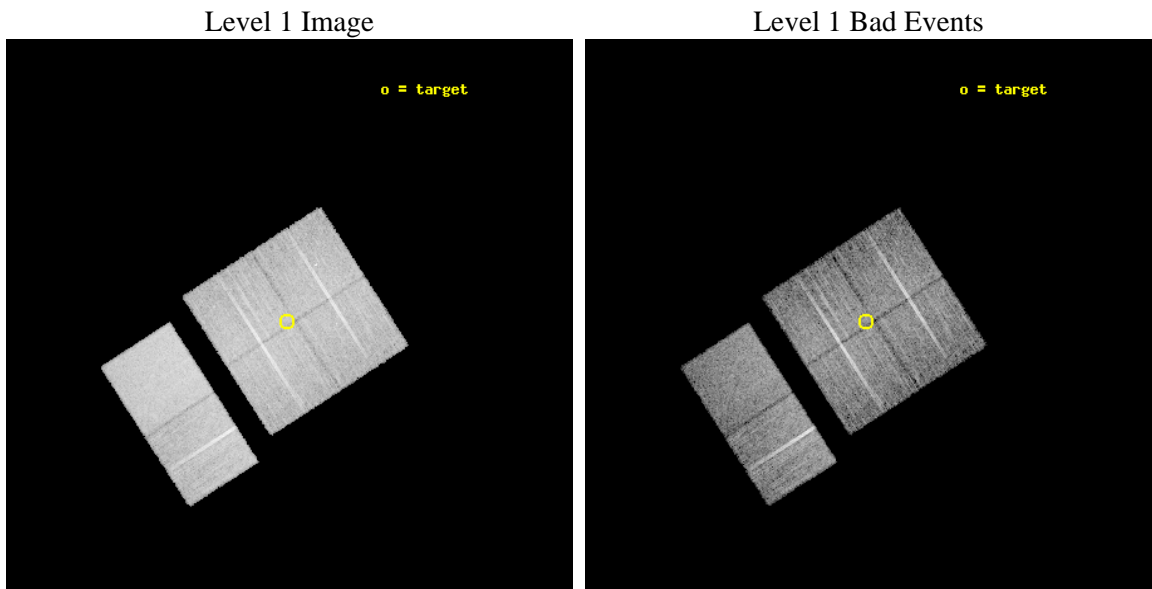
seq_num	400416	Sequence number
obs_id	5486	Observation id
title	Discovering X-ray pulsars in the Wing of the Small Magellanic Cloud	
observer	Prof Malcolm Coe	Principal investigator
object	SMCwing 7	Source name
dtcycle	0	
cycle	P	events from which exps? Prim/Second/Both
ra_targ	15.970833	Observer's specified target RA [deg]
dec_targ	-72.251667	Observer's specified target Dec [deg]
ra_nom	15.958278298584	Nominal RA [deg]
dec_nom	-72.254222771625	Nominal Dec [deg]
roll_nom	237.22369684807	Nominal Roll [deg]
revision	2	Processing version of data
ontime	9955.199962914	Sum of GTIs [s]
livetime	9829.1412266818	Livetime [s]
ontime0	9955.199962914	Sum of GTIs [s]
ontime1	9955.199962914	Sum of GTIs [s]
ontime2	9955.199962914	Sum of GTIs [s]
ontime3	9955.199962914	Sum of GTIs [s]
ontime6	9955.199962914	Sum of GTIs [s]
ontime7	9955.199962914	Sum of GTIs [s]
l2events	92013	Number of level 2 events



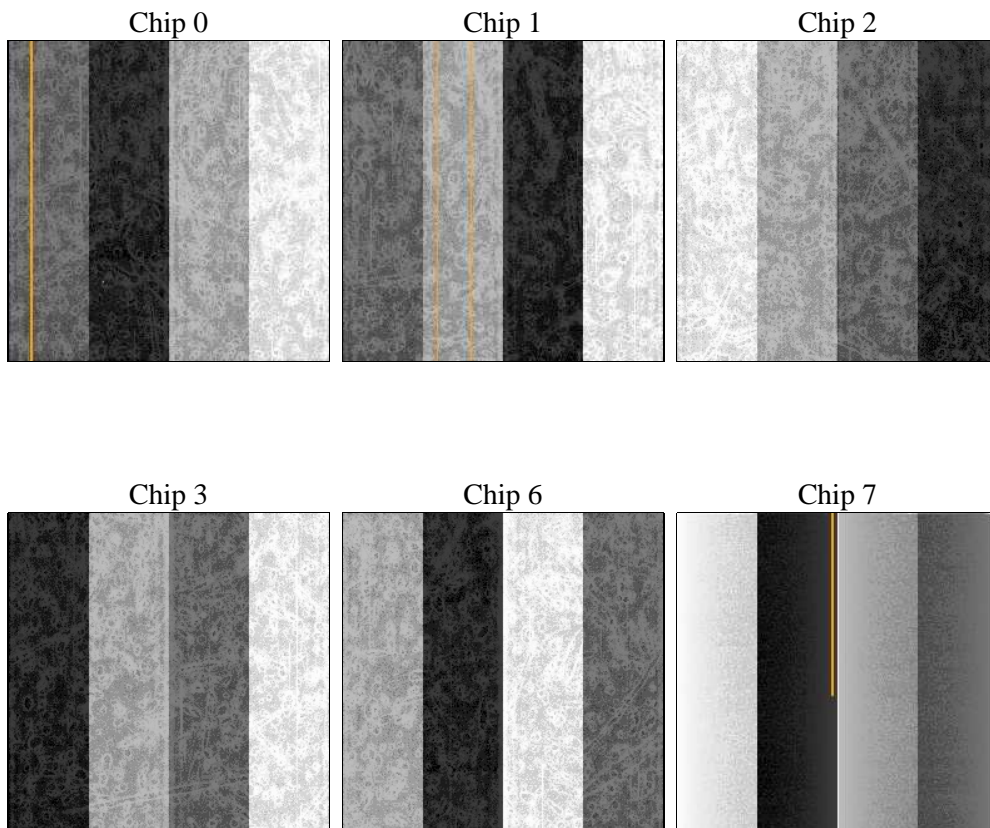
2 OBI

2.1 OBI

2.1.1 Images



2.1.2 Bias



2.1.3 Parameters

obi_num	0	Obi number	sched_exp_time	10000.000000	[s] Scheduled observation exposure time
ascdsver	8.4.3	Processing system revision	ontime	9955.199962914	Sum of GTIs [s]
caldsver	4.4.8	 	ontime0	9955.199962914	Sum of GTIs [s]
date	2012-03-25T15:52:13	Date and time of file creation	ontime1	9955.199962914	Sum of GTIs [s]
revision	2	Processing version of data	ontime2	9955.199962914	Sum of GTIs [s]
			ontime3	9955.199962914	Sum of GTIs [s]
			ontime6	9955.199962914	Sum of GTIs [s]
			ontime7	9955.199962914	Sum of GTIs [s]
			l1events	525250	Number of level 1 events

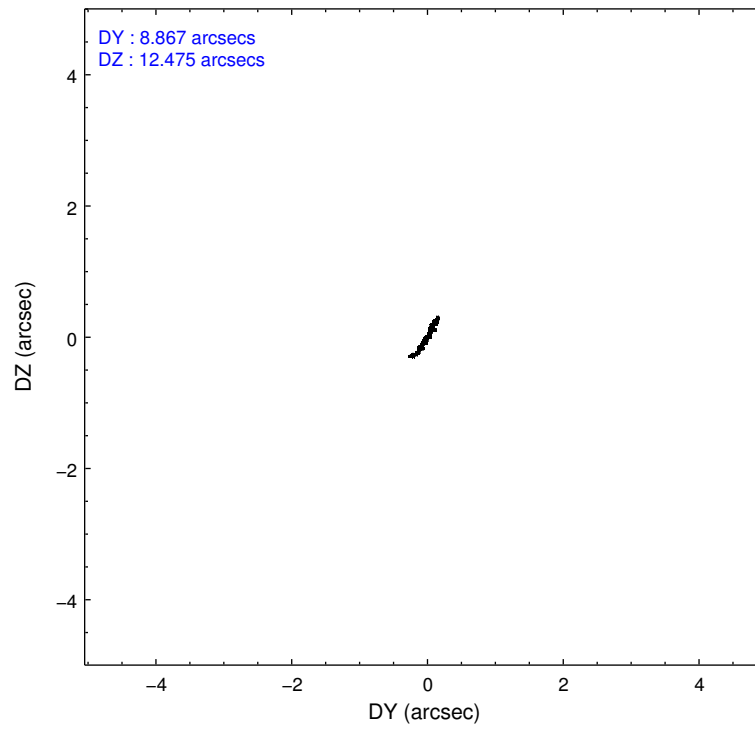
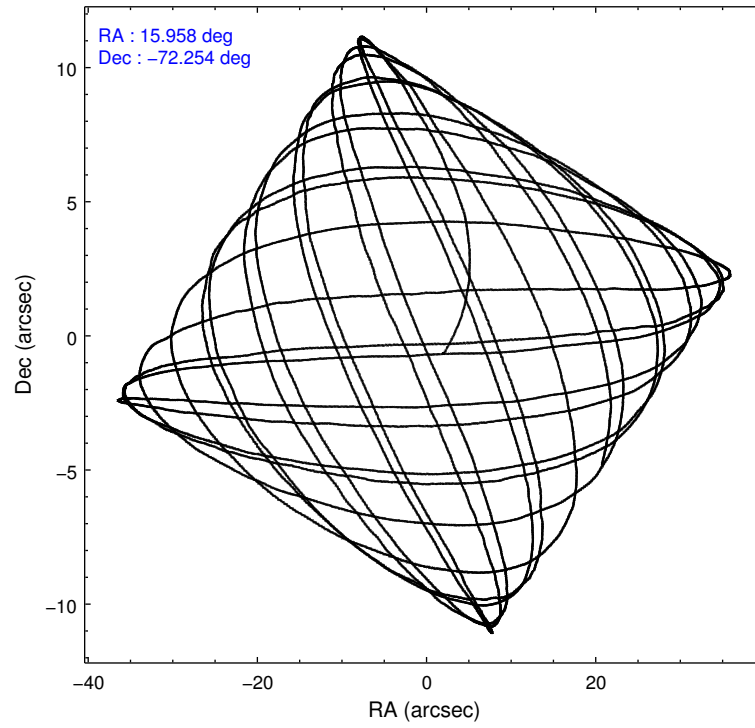
2.1.4 Events

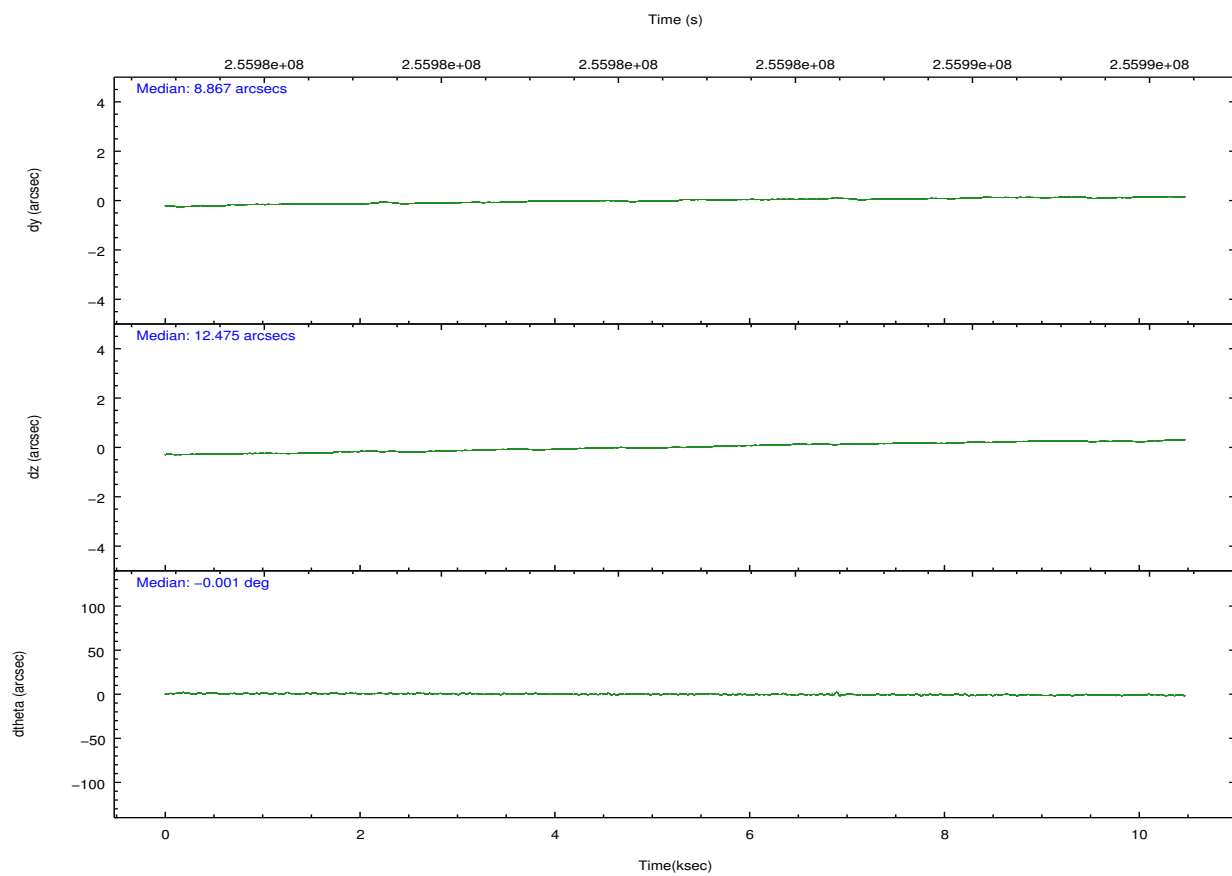
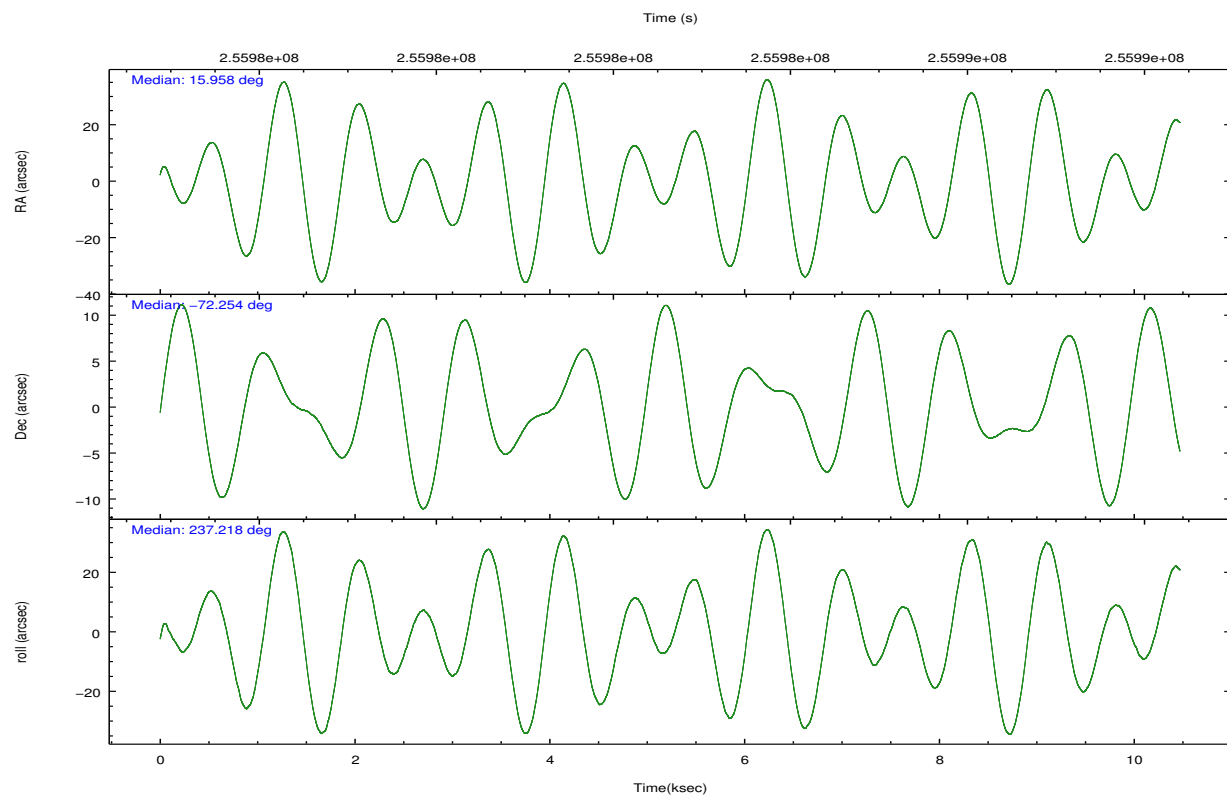
	ccd 0	ccd 1	ccd 2	ccd 3	ccd 6	ccd 7		ccd 0	ccd 1	ccd 2	ccd 3	ccd 6	ccd 7
level 1 events	77180	78321	82231	83503	89254	114761	grade 0 events	4459	4694	4520	4723	3923	4352
rejected events	66777	66960	72068	73167	79151	66845		5%	5%	5%	5%	4%	3%
rejected %	86%	85%	87%	87%	88%	58%	grade 1 events	56	45	58	49	59	102
								0%	0%	0%	0%	0%	0%
							grade 2 events	2240	2398	2160	1990	2190	9484
								2%	3%	2%	2%	2%	8%
							grade 3 events	1008	1118	940	972	966	4185
								1%	1%	1%	1%	1%	3%
							grade 4 events	941	1018	936	907	922	4178
								1%	1%	1%	1%	1%	3%
							grade 5 events	3445	3690	3118	3715	3934	10823
								4%	4%	3%	4%	4%	9%
							grade 6 events	1763	2139	1608	1748	2108	25737
								2%	2%	1%	2%	2%	22%
							grade 7 events	63268	63219	68891	69399	75152	55900
								81%	80%	83%	83%	84%	48%

2.2 Compared Parameters

Parameter	Planned	Actual	Parameter	Planned	Actual
Instrument	ACIS	ACIS	Obspar format version number	7	7
Detector	ACIS-012367	ACIS-012367	Obspar file type	PREDICTED	ACTUAL
Grating	NONE	NONE	Obspar update status	NONE	UPDATED
Data mode	FAINT	FAINT	Number of optional ACIS chips dropped	0	0
Observation mode	POINTING	POINTING	On-chip summing requested	N	N
[deg] Pointing RA	15.962254	15.95827829858393	Subarray requested	NONE	NONE
[deg] Pointing Dec	-72.226902	-72.25422277162519	Alternating exposures requested	N	N
[deg] Pointing Roll	237.018804	237.2236968480699	[s] Primary exposure time	0.000000	3.2
[mm] SIM focus pos	-0.782348	-0.7809083437167272			
[mm] SIM defocus	0	0.001439871863259334			
[mm] SIM translation stage pos	-233.592463	-233.5874344608287			
[mm] SIM translation stage offset	0	-0.005018542100998502			
[s] Observation start time (MET)	255977878.184000	255976772.82897			
Observation start date	2006-02-10T16:56:53	2006-02-10T16:39:32			
[s] Observation end time (MET)	255987878.184000	255988011.95449			
Observation end date	2006-02-10T19:43:33	2006-02-10T19:46:51			
Read mode	TIMED	TIMED			

2.3 Aspect



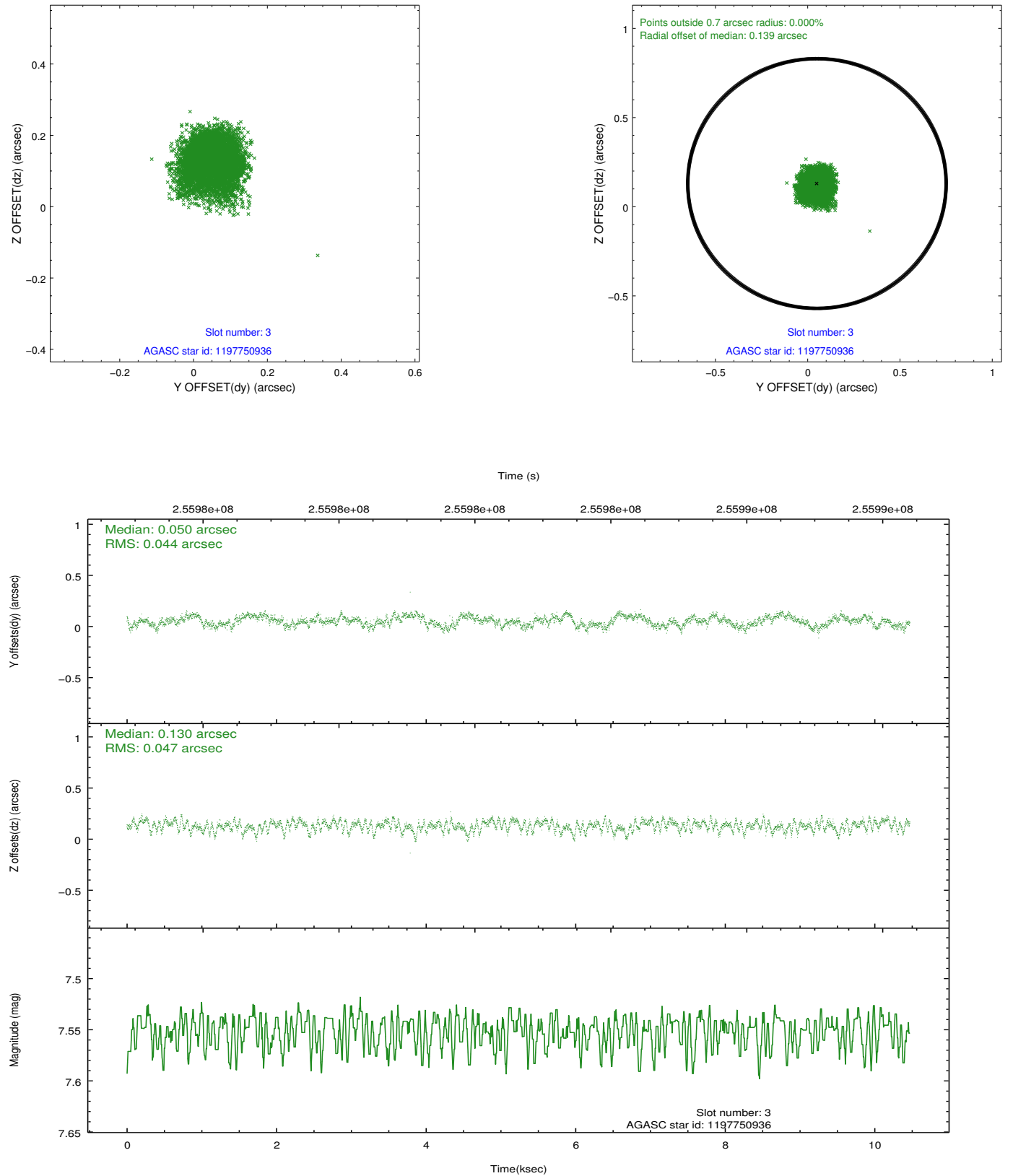


Slot Statistics

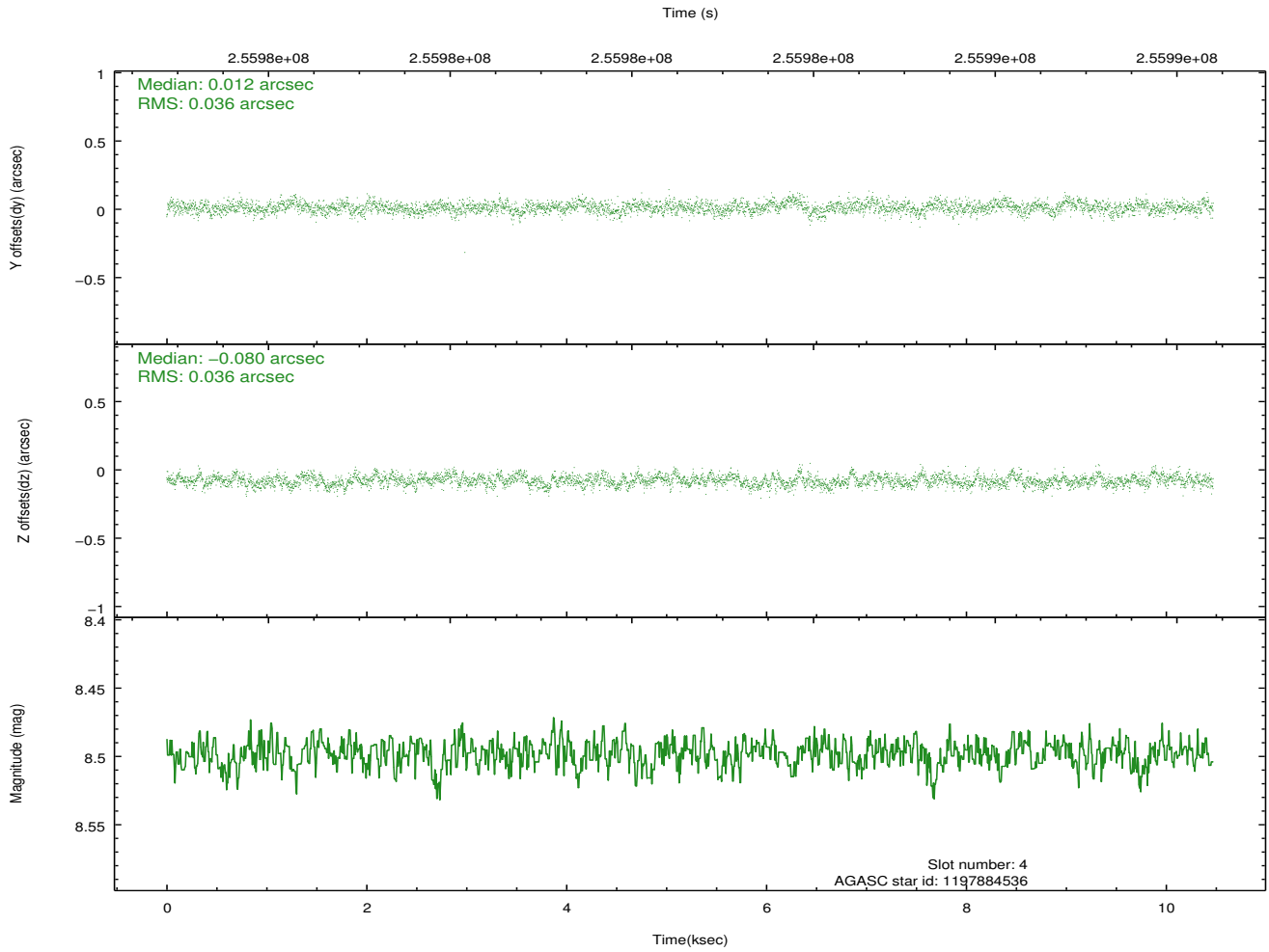
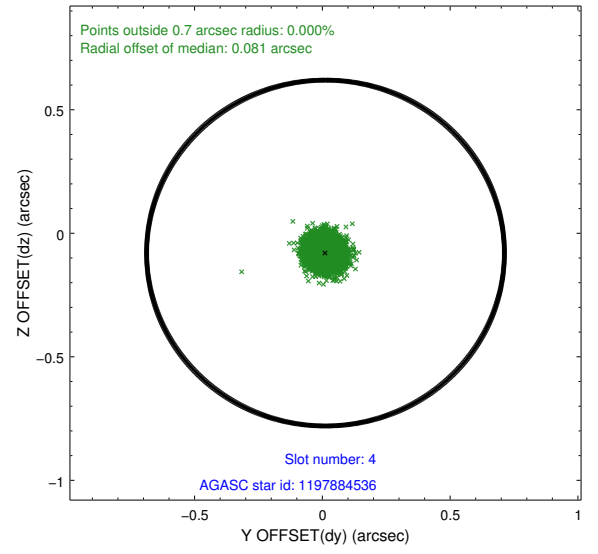
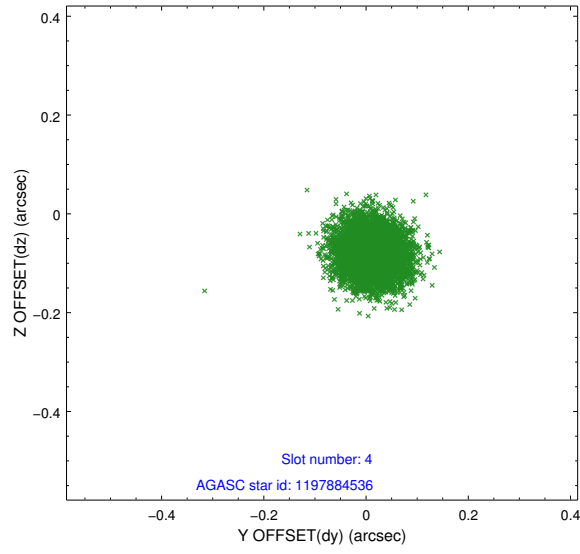
slot	status	id	mag	n_pts	med_dy	med_dz	dr1	dr2	ra	dec	mean_y	mean_z
0	FID	ACIS-I-1	7.24	2553	0.057	-0.002	0.011	0.018	0.000000	0.000000	930.81	-836.04
1	FID	ACIS-I-5	7.22	2551	-0.199	0.070	0.007	0.011	0.000000	0.000000	-1817.24	1061.32
2	FID	ACIS-I-6	7.25	2554	0.051	0.002	0.011	0.016	0.000000	0.000000	395.85	1706.28
3	GUIDE	1197750936	7.55	5106	0.050	0.130	0.069	0.108	15.387940	-71.549550	-1686.05	-1874.22
4	GUIDE	1197884536	8.50	5108	0.012	-0.080	0.054	0.087	17.160729	-71.835289	-1903.61	367.72
5	GUIDE	1197885104	9.35	5103	0.145	0.019	0.098	0.159	17.845067	-72.189368	-1214.22	1683.23
6	GUIDE	1198189696	7.37	5109	-0.055	-0.036	0.058	0.091	15.223750	-72.697522	1855.68	262.50
7	GUIDE	1198283128	7.94	5107	-0.153	-0.034	0.073	0.115	17.272580	-72.642428	502.00	2003.41

2.4 Star Slots

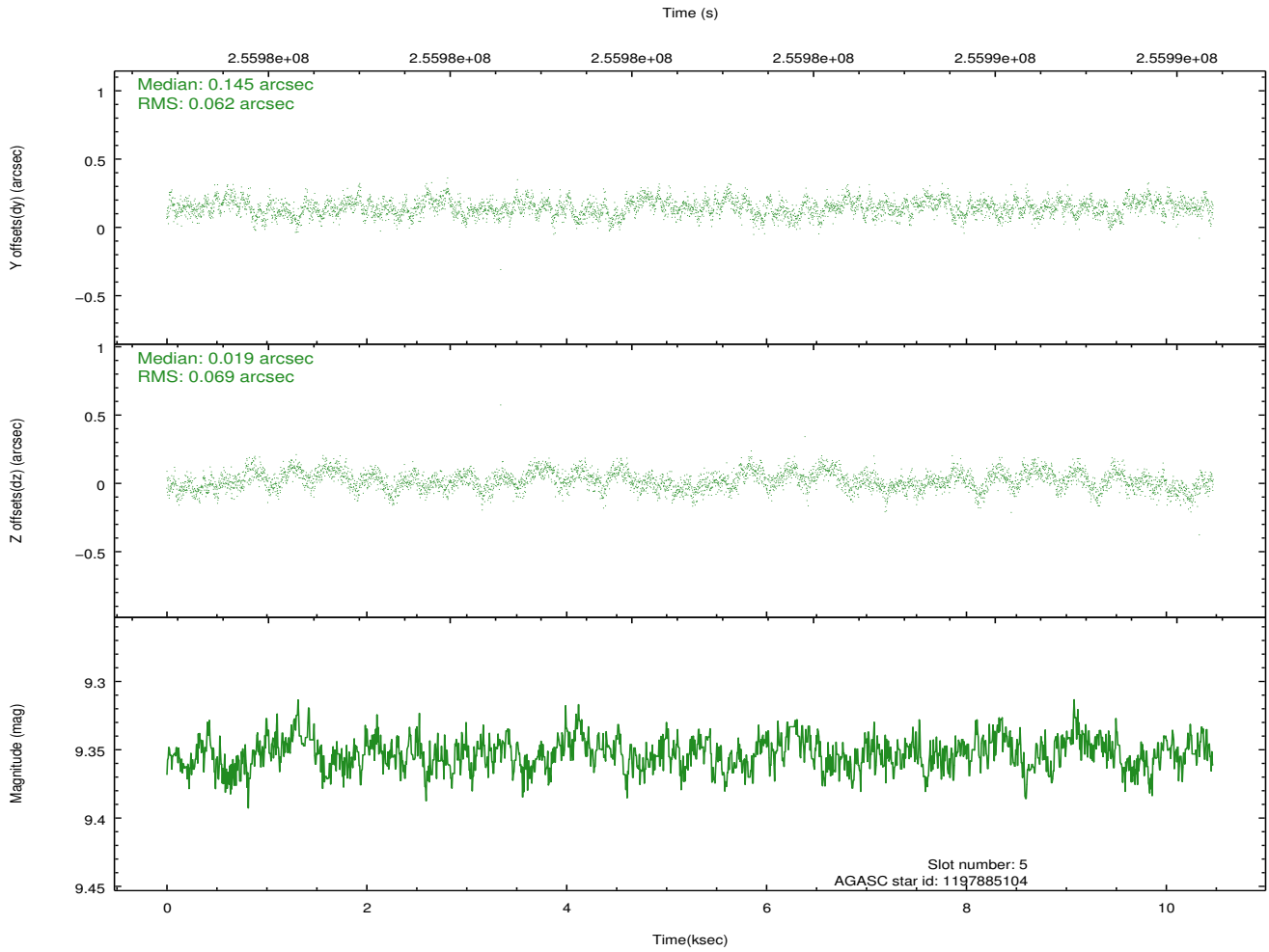
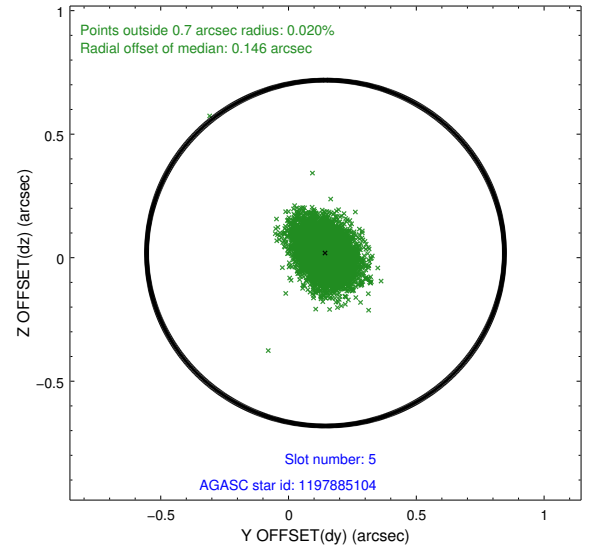
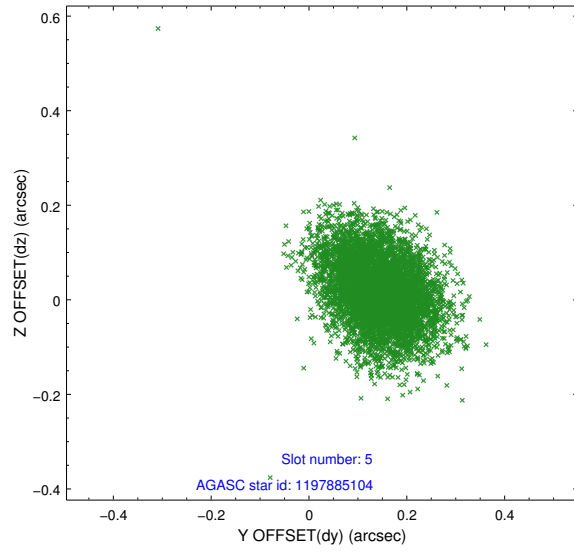
2.4.1 Slot 3



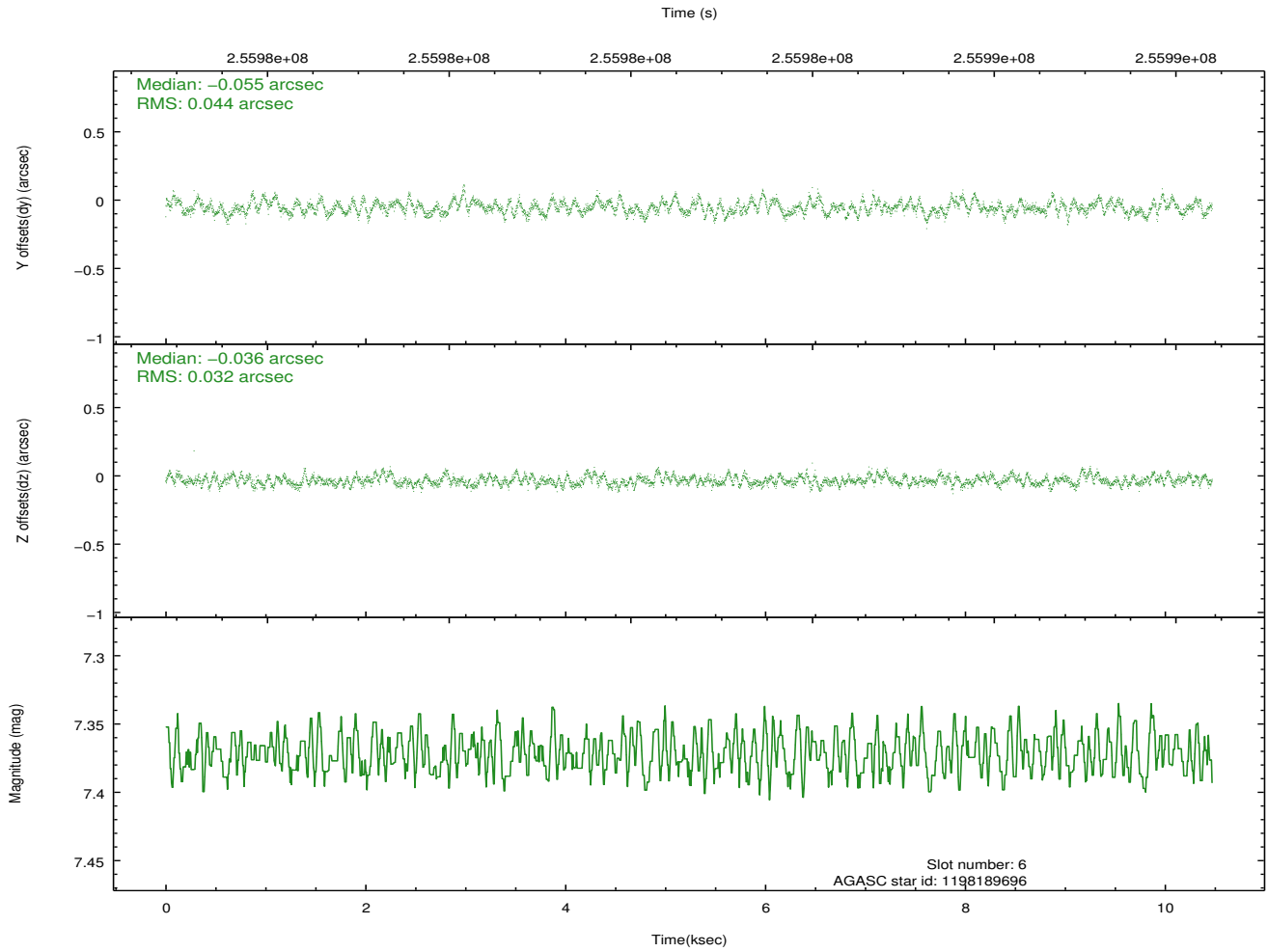
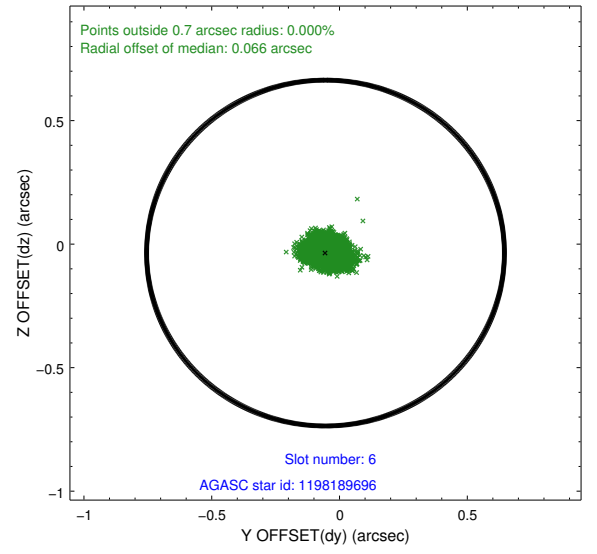
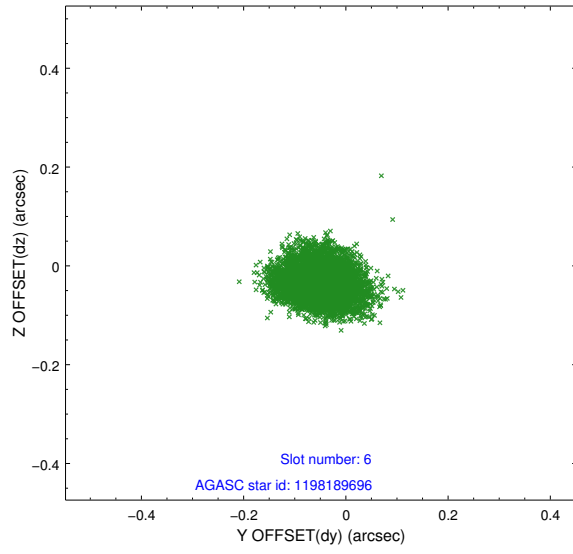
2.4.2 Slot 4



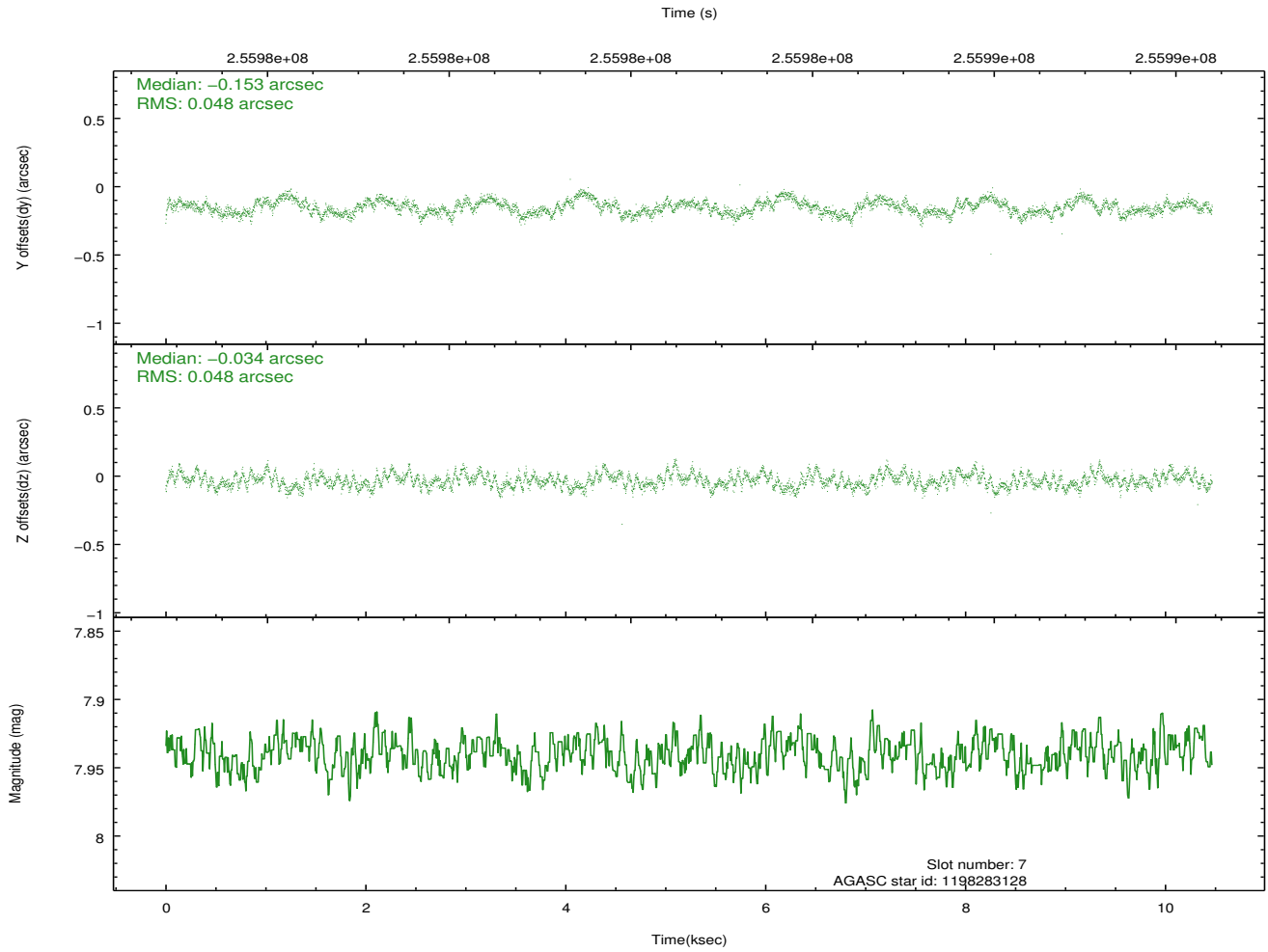
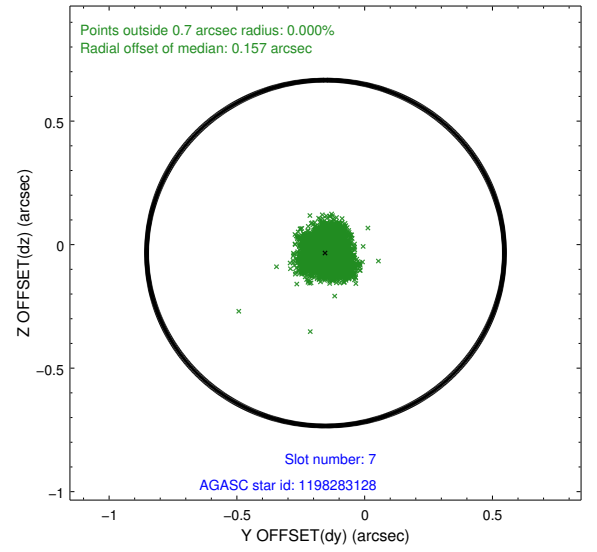
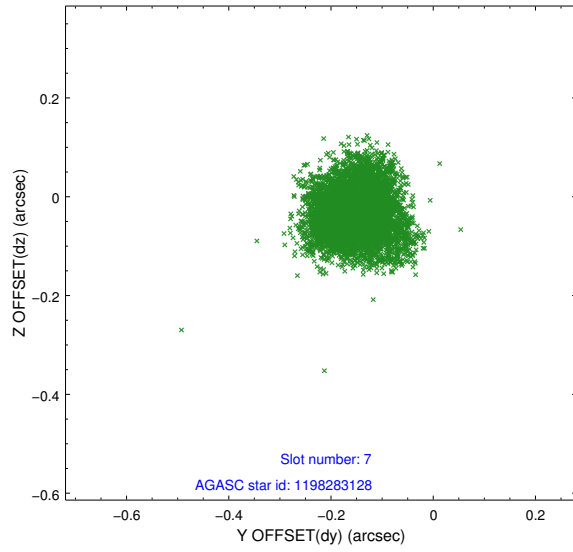
2.4.3 Slot 5



2.4.4 Slot 6

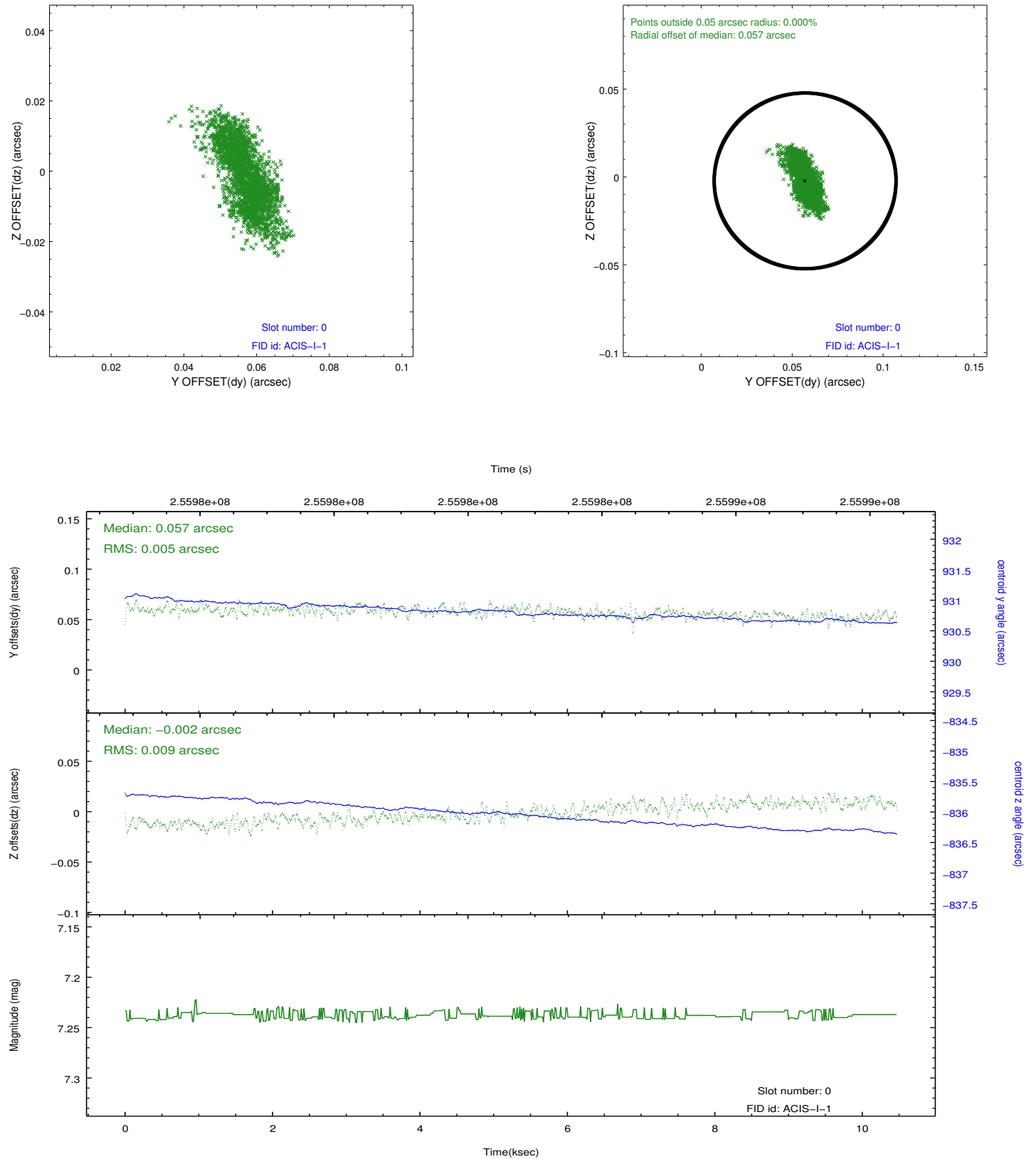


2.4.5 Slot 7

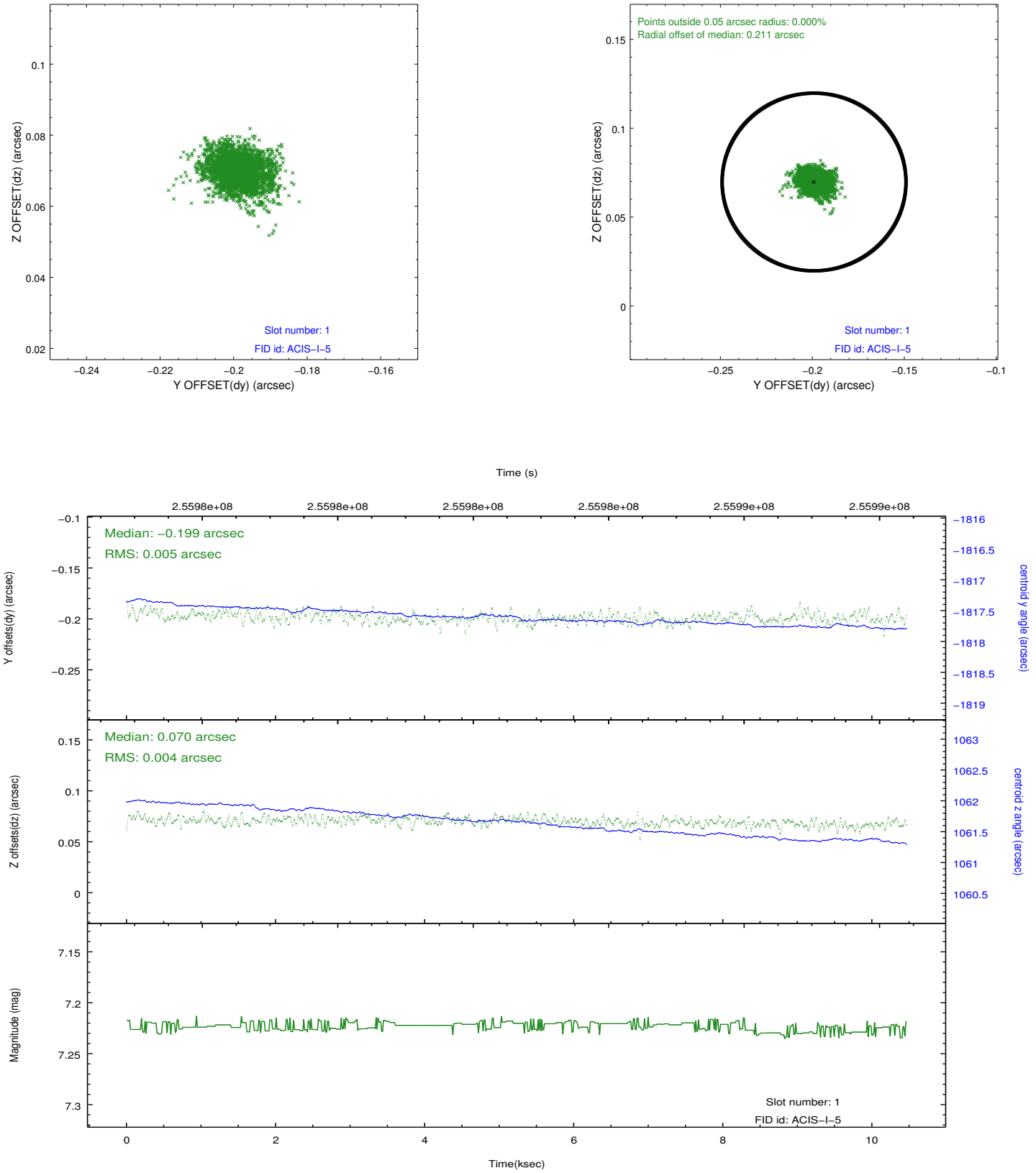


2.5 FID Slots

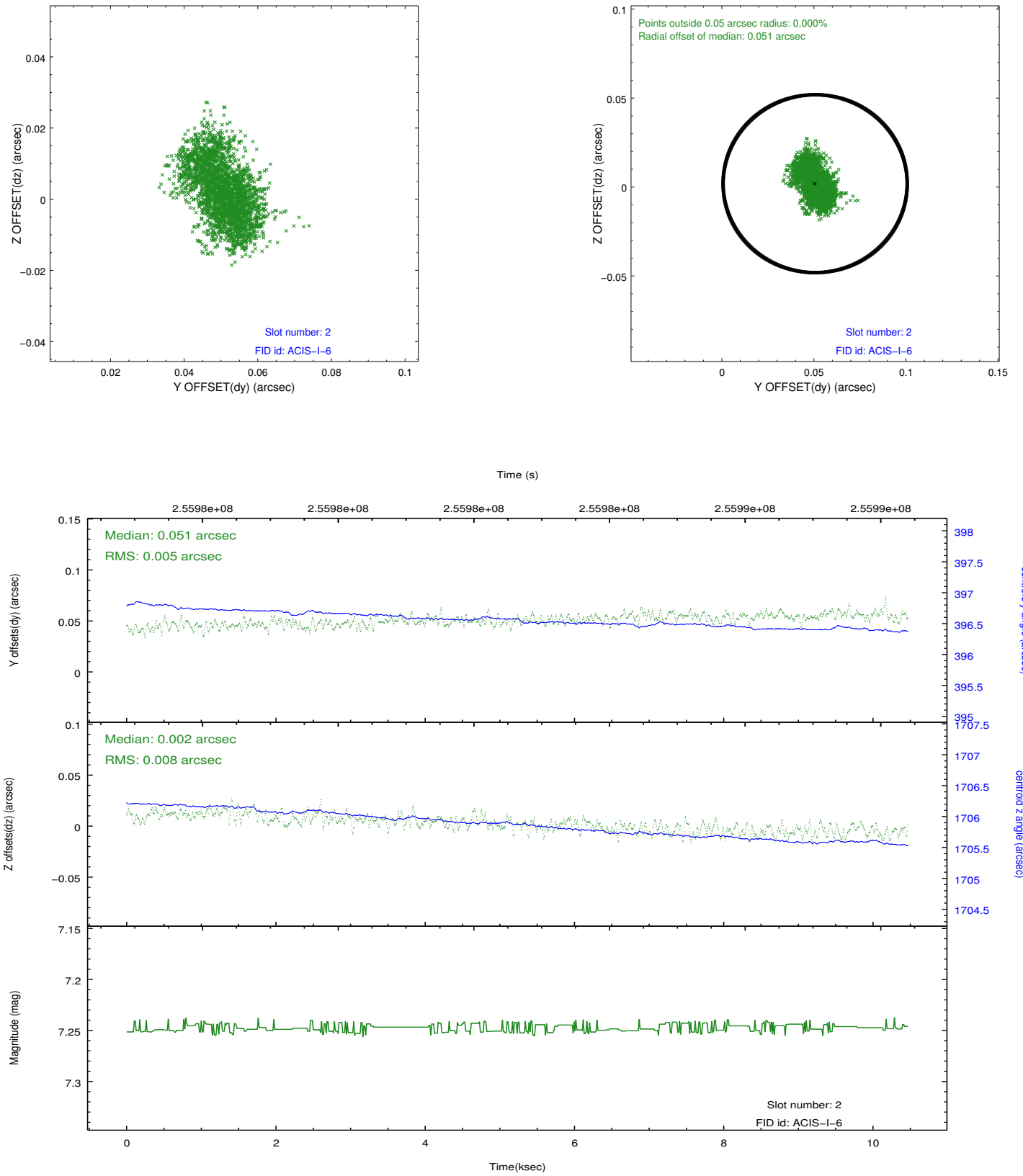
2.5.1 Slot 0



2.5.2 Slot 1



2.5.3 Slot 2



A Summary

A.1 Status

V&V Scientist	Jen Lauer
V&V Date (YYYY-MM-DD)	2012.03.27
V&V Edition	1
V&V Disposition and Status	OK
V&V Charge Time	9.95519996

A.2 Comments