

V&V Reference Report

L2 ASCDS Version : 7.6.7.1

Observation 7186 - L2 Version 002
Chandra X-Ray Center

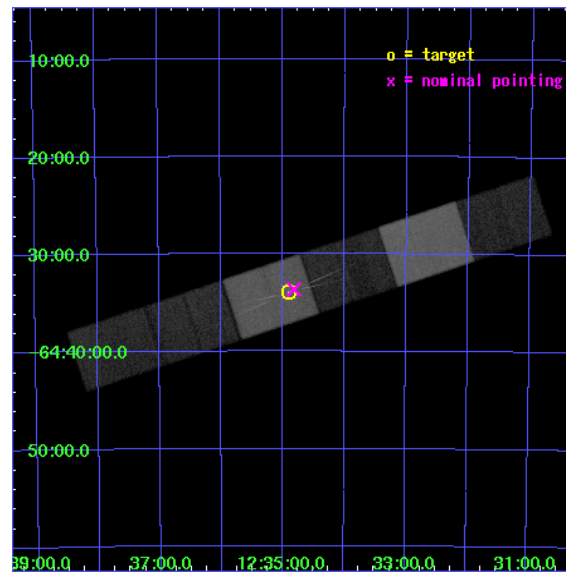
L2 Processing Date : Apr 2 2006

Contents

1	Front	2
2	OBI	3
2.1	OBI	3
2.1.1	Images	3
2.1.2	Bias	3
2.1.3	Parameters	4
2.1.4	Events	4
2.2	Compared Parameters	5
2.3	Aspect	6
2.4	Star Slots	9
2.4.1	Slot 3	9
2.4.2	Slot 4	10
2.4.3	Slot 5	11
2.4.4	Slot 6	12
2.4.5	Slot 7	13
2.5	FID Slots	14
2.5.1	Slot 0	14
2.5.2	Slot 1	15
2.5.3	Slot 2	16
3	Gratings	17
3.1	HEG Arm	17
3.2	MEG Arm	19
A	Summary	21
A.1	Status	21
A.2	Comments	21

1 Front

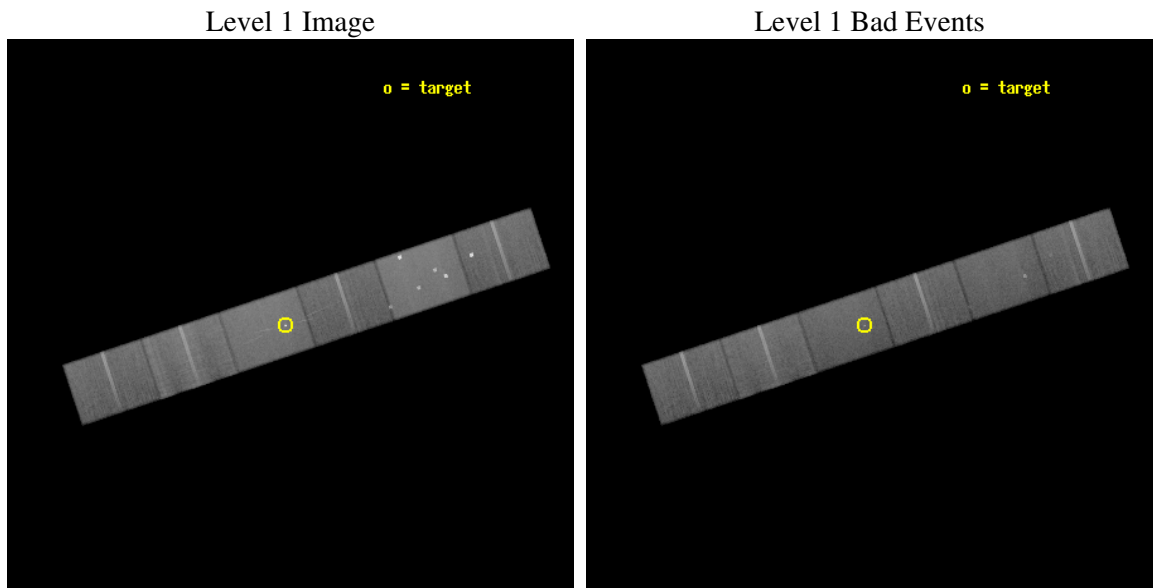
seq_num	300171
obs_id	7186
title	HETGS Observation of a Transient Hard X-ray Symbiotic Binary
observer	Dr. Jennifer Sokoloski
object	RT Cru
dtcycle	0
cycle	P
ra_targ	188.72375
dec_targ	-64.565556
ra_nom	188.70401710168
dec_nom	-64.560953757147
roll_nom	161.6058423311
revision	2
ontime	50155.0
livetime	49344.953247489
ontime4	50155.0
ontime5	50155.0
ontime6	50155.0
ontime7	50155.0
ontime8	50155.0
ontime9	50155.0
l2events	489162



2 OBI

2.1 OBI

2.1.1 Images

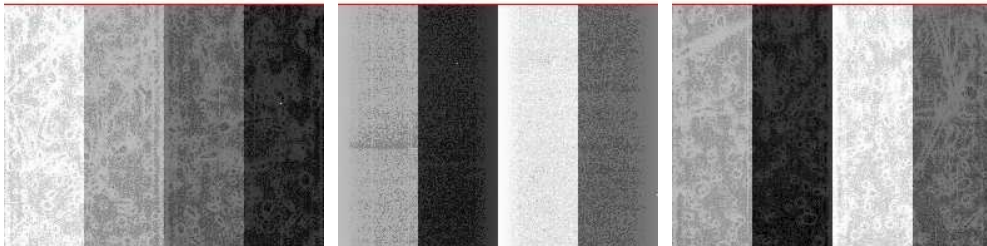


2.1.2 Bias

Chip 4

Chip 5

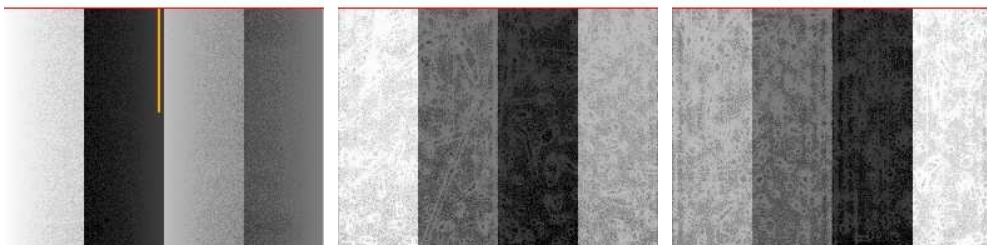
Chip 6



Chip 7

Chip 8

Chip 9



2.1.3 Parameters

obi_num	0
ascdsver	7.6.7.1
caldsver	3.2.1
date	2006-04-02T12:28:29
revision	2

sched_exp_time	50000.000000
ontime	50581.344440669
ontime4	50581.344440669
ontime5	50581.344440607
ontime6	50581.344440669
ontime7	50581.344440669
ontime8	50581.344440669
ontime9	50581.344440669
l1events	2274031

2.1.4 Events

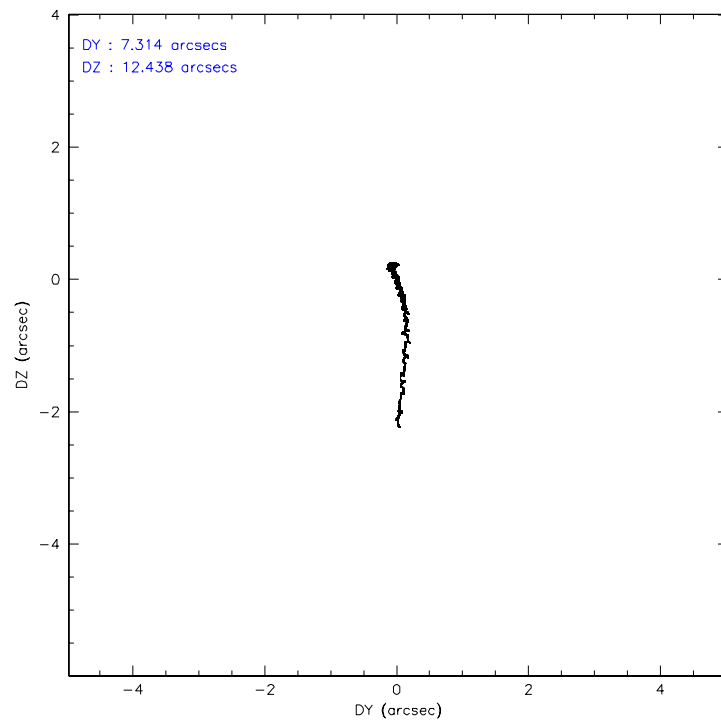
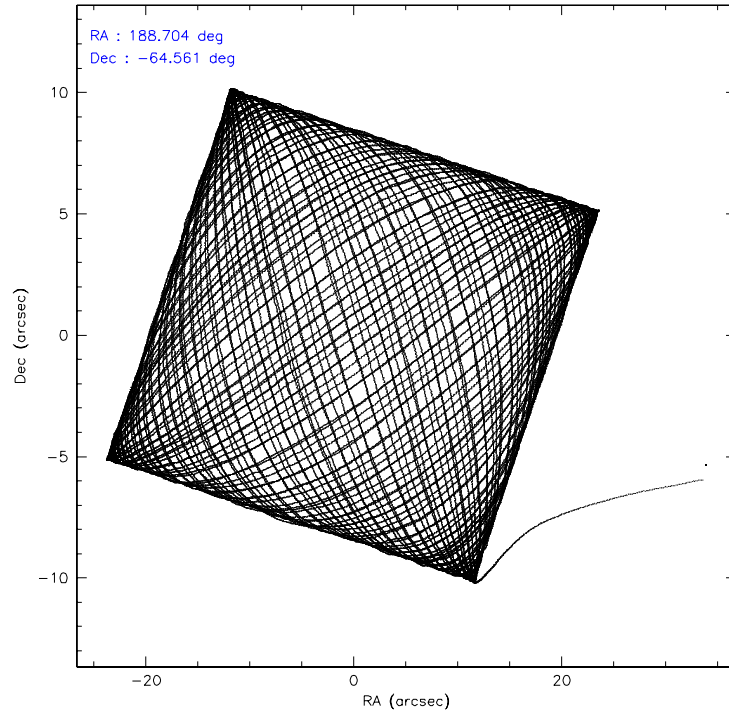
	ccd 4	ccd 5	ccd 6	ccd 7	ccd 8	ccd 9
level 1 events	355136	488020	307208	423562	394976	305129
rejected events	299887	257635	269398	255585	309487	267519
rejected %	84%	52%	87%	60%	78%	87%

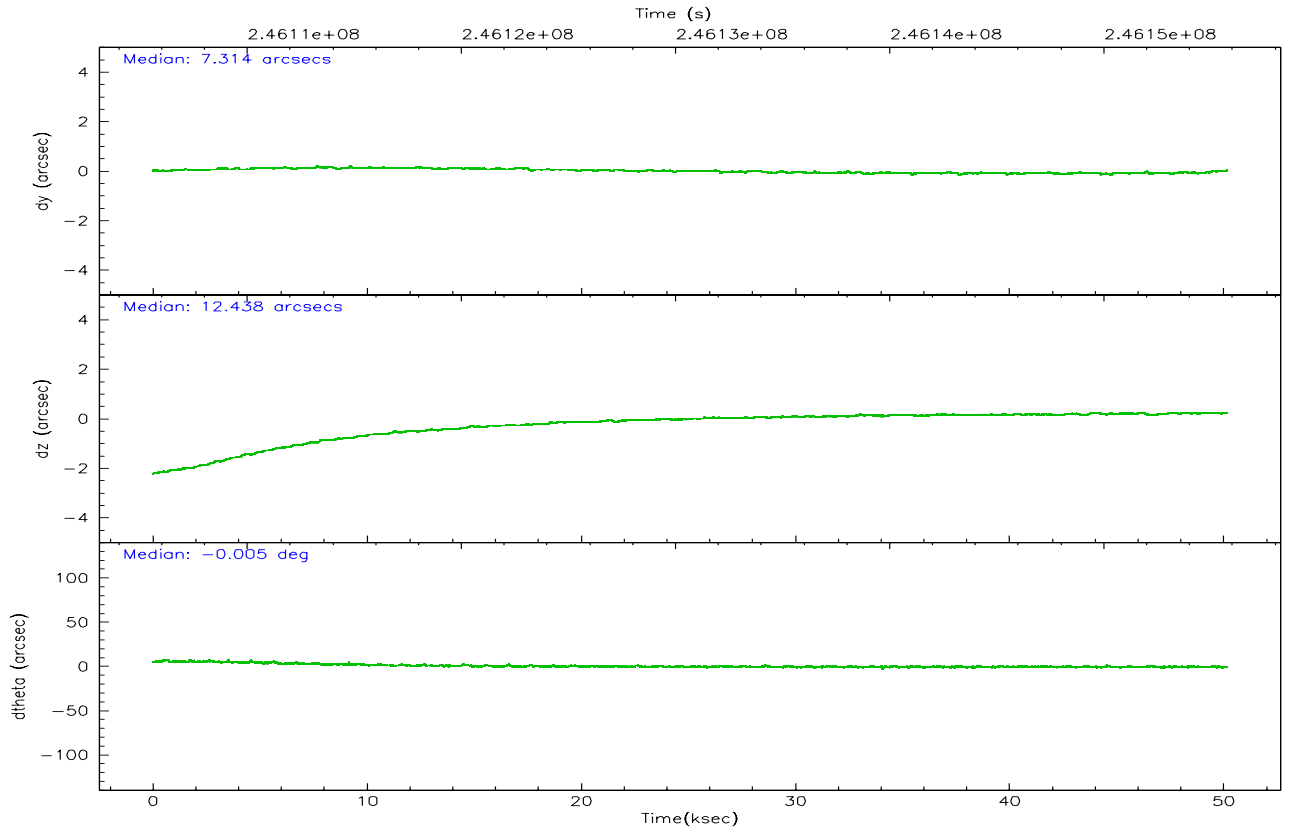
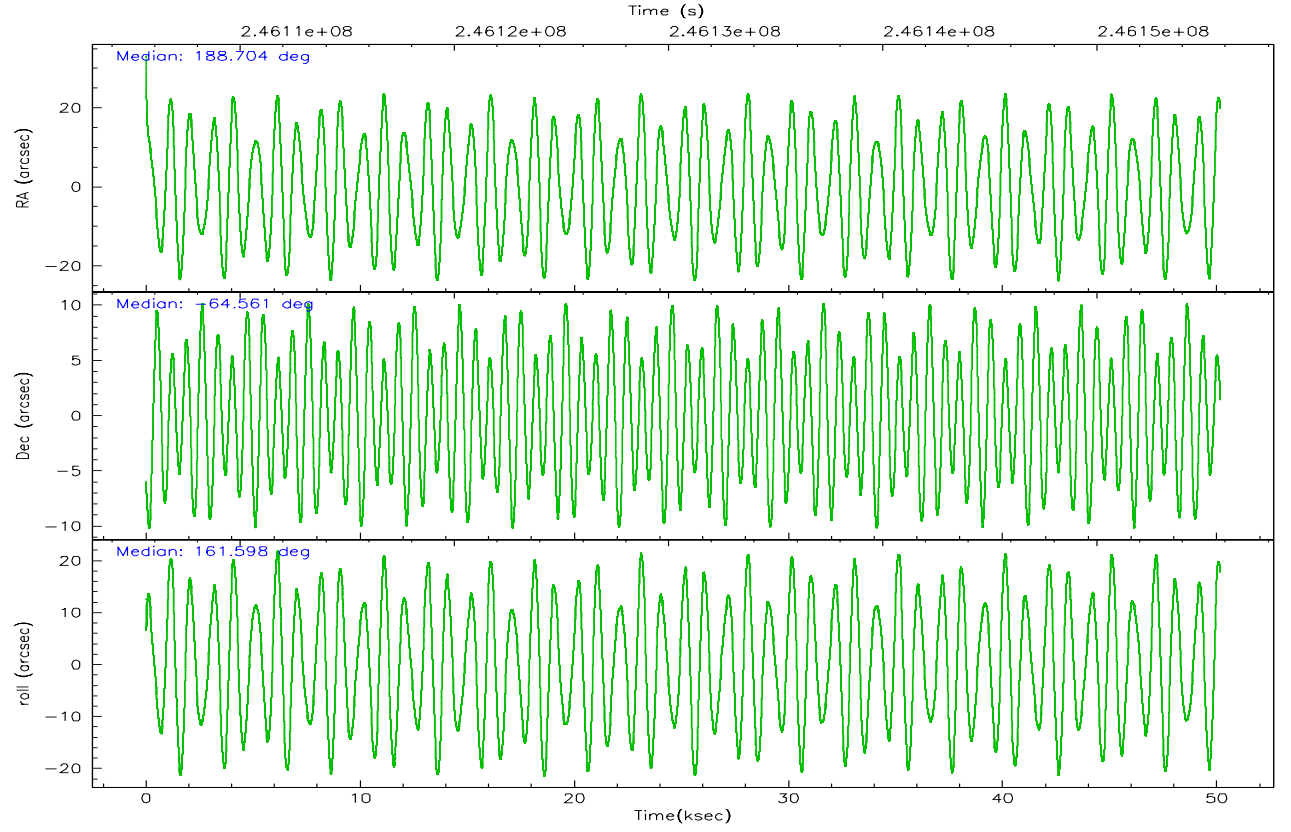
	ccd 4	ccd 5	ccd 6	ccd 7	ccd 8	ccd 9
grade 0 events	32728	42460	14918	10553	26132	15410
	9%	8%	4%	2%	6%	5%
grade 1 events	317	2252	133	309	239	145
	0%	0%	0%	0%	0%	0%
grade 2 events	8588	61910	7831	41693	19193	7516
	2%	12%	2%	9%	4%	2%
grade 3 events	4063	5315	3967	9714	9291	3865
	1%	1%	1%	2%	2%	1%
grade 4 events	4014	5525	3786	9380	8687	3857
	1%	1%	1%	2%	2%	1%
grade 5 events	13504	23422	14142	29426	18596	15108
	3%	4%	4%	6%	4%	4%
grade 6 events	6326	117191	7604	98065	22900	7263
	1%	24%	2%	23%	5%	2%
grade 7 events	285596	229945	254827	224422	289938	251965
	80%	47%	82%	52%	73%	82%

2.2 Compared Parameters

Parameter	Planned	Actual	Parameter	Planned	Actual
Instrument	ACIS	ACIS	Obspar format version number	6	6
Detector	ACIS-456789	ACIS-456789	Obspar file type	PREDICTED	ACTUAL
Grating	HETG	HETG	Obspar update status	NONE	UPDATED
Data mode	FAINT	FAINT	On-chip summing requested	N	N
Observation mode	POINTING	POINTING	Subarray requested	CUSTOM	CUSTOM
Pointing RA	188.765868	188.7040171016843	Subarray start row	1	1
Pointing Dec	-64.555078	-64.56095375714749	Subarray row count	774	774
Pointing Roll	161.505073	161.6058423310976	Alternating exposures requested	N	N
SIM focus pos (mm)	-0.684267	-0.6828225247311905	Primary exposure time	0.000000	2.5
SIM defocus (mm)	0	0.001444936568705701			
SIM translation stage pos (mm)	-187.132523	-187.1228876879999			
SIM translation stage offset (mm)	-3	-3.009634895007935			
Observation start time	246105762.184000	246104536.63481			
Observation start date	2005-10-19T10:41:38	2005-10-19T10:22:16			
Observation end time	246155762.184000	246156759.36221			
Observation end date	2005-10-20T00:34:58	2005-10-20T00:52:39			
Read mode	TIMED	TIMED			

2.3 Aspect



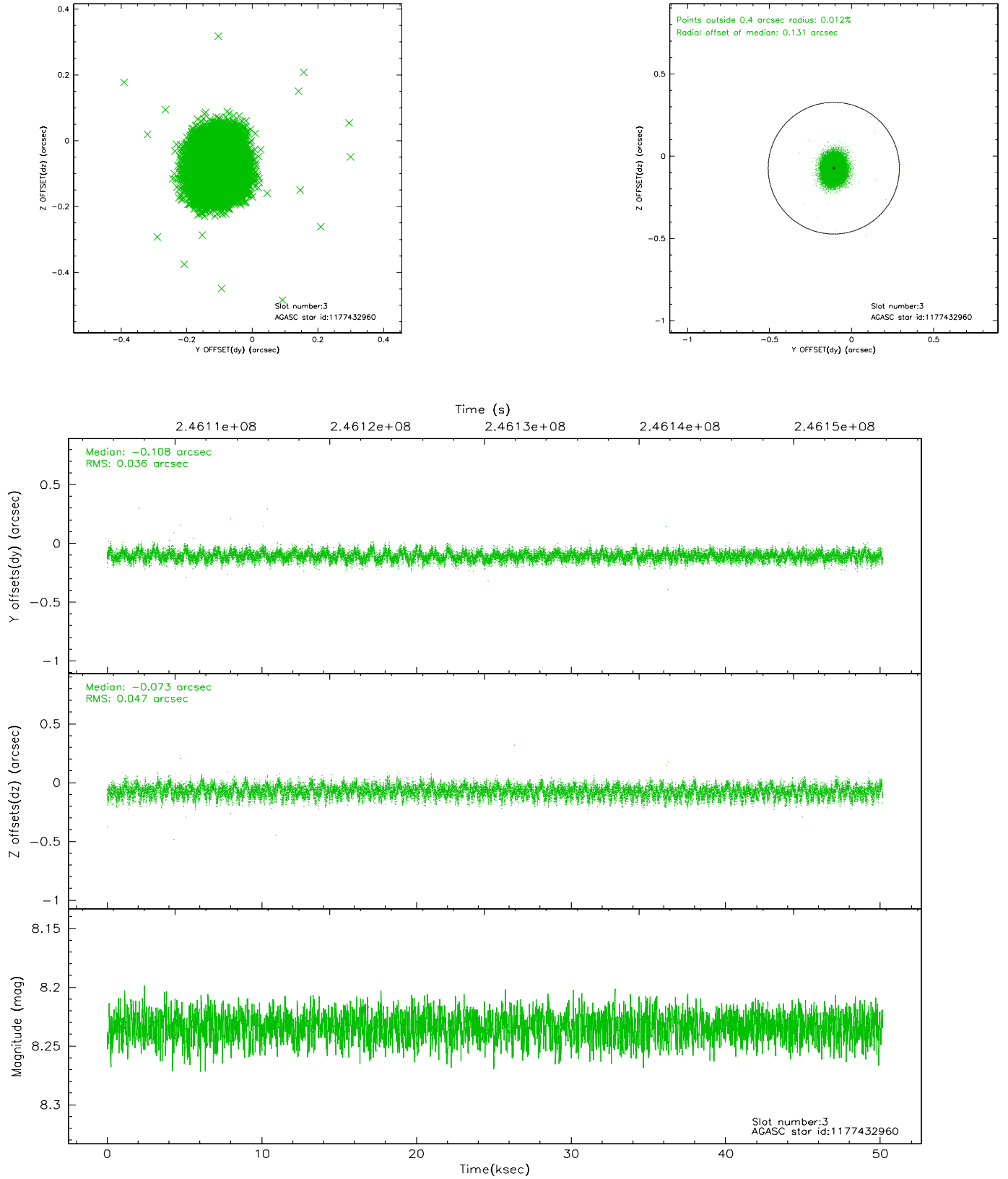


Slot Statistics

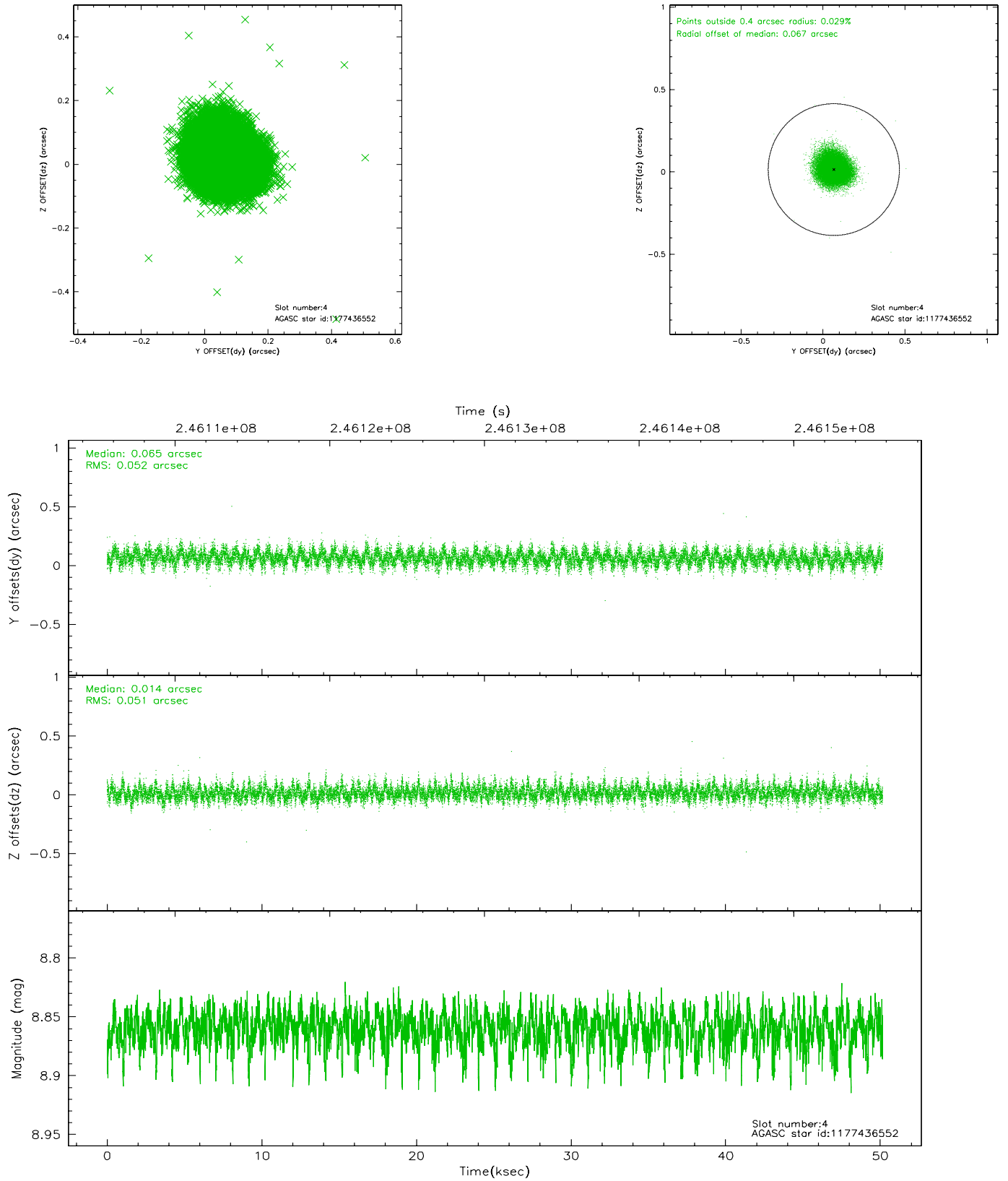
slot	status	id	mag	n_pts	med_dy	med_dz	dr1	dr2	ra	dec	mean_y	mean_z
0	FID	ACIS-S-2	7.09	12234	-0.068	-0.055	0.017	0.039	0.000000	0.000000	-759.92	-1795.67
1	FID	ACIS-S-4	7.19	12233	0.079	0.048	0.011	0.023	0.000000	0.000000	2153.48	112.97
2	FID	ACIS-S-5	7.23	12233	-0.044	0.015	0.023	0.043	0.000000	0.000000	-1812.79	106.54
3	GUIDE	1177432960	8.23	24464	-0.108	-0.073	0.063	0.102	187.860990	-64.880924	936.08	1560.63
4	GUIDE	1177436552	8.86	24456	0.065	0.014	0.078	0.125	188.059614	-64.178277	1479.08	-928.91
5	GUIDE	1179126976	8.64	24467	0.133	0.200	0.072	0.117	190.268902	-64.540566	-2197.29	-761.28
6	GUIDE	1179131192	9.14	24456	0.000	-0.202	0.115	0.177	188.912026	-65.278046	-1034.27	2398.61
7	GUIDE	1179128056	7.90	24461	-0.091	0.059	0.061	0.096	189.145049	-64.556116	-557.77	-180.66

2.4 Star Slots

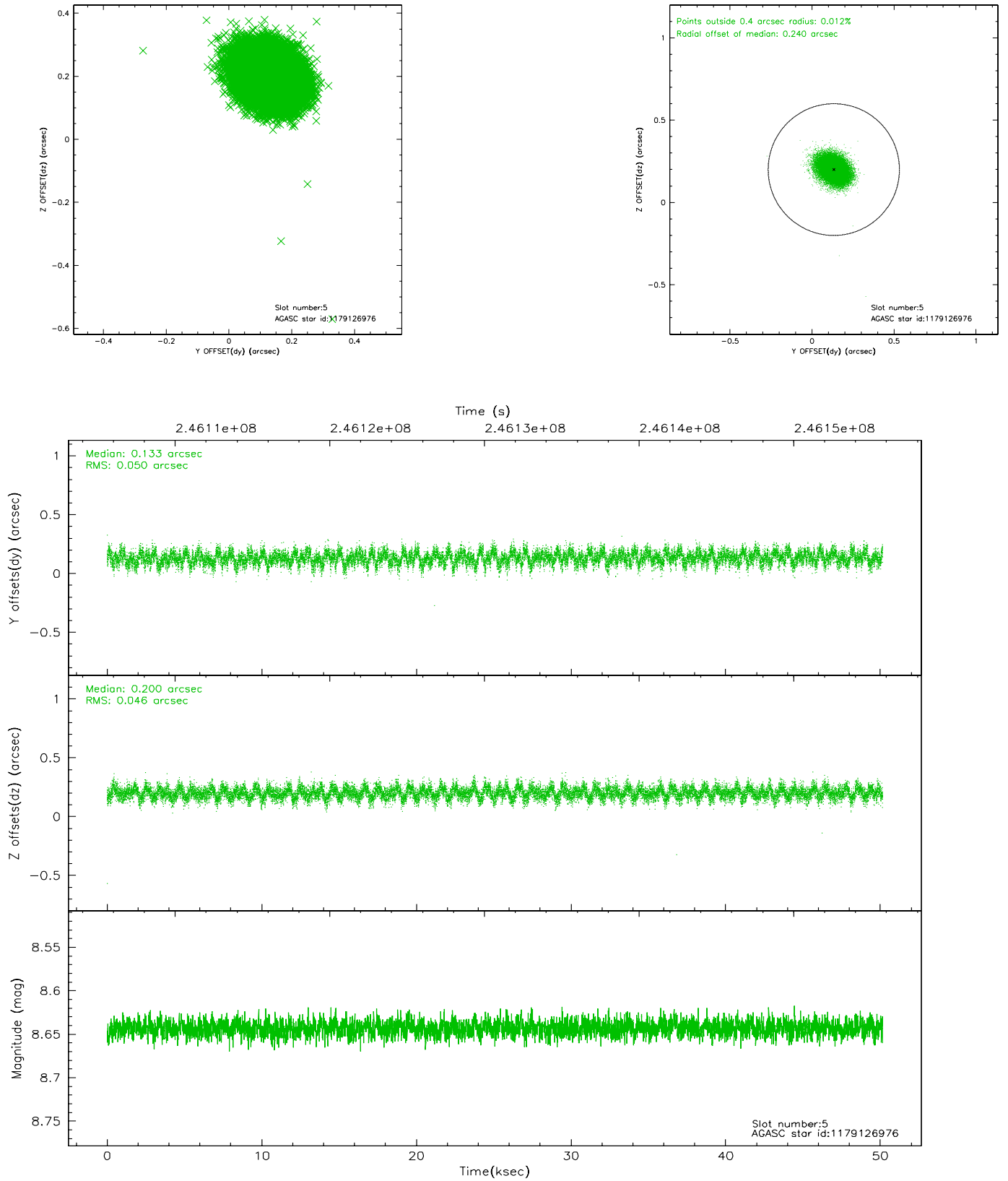
2.4.1 Slot 3



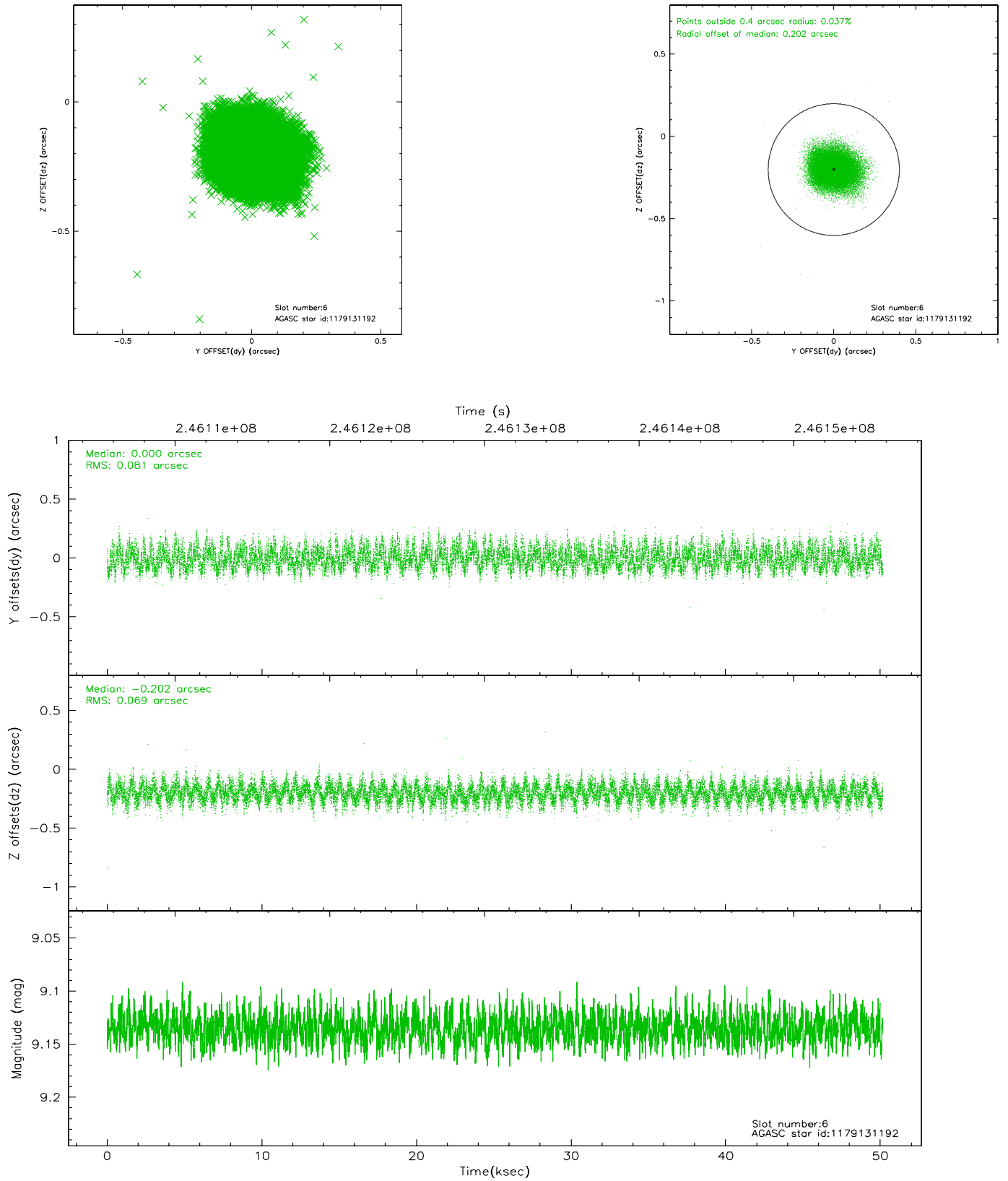
2.4.2 Slot 4



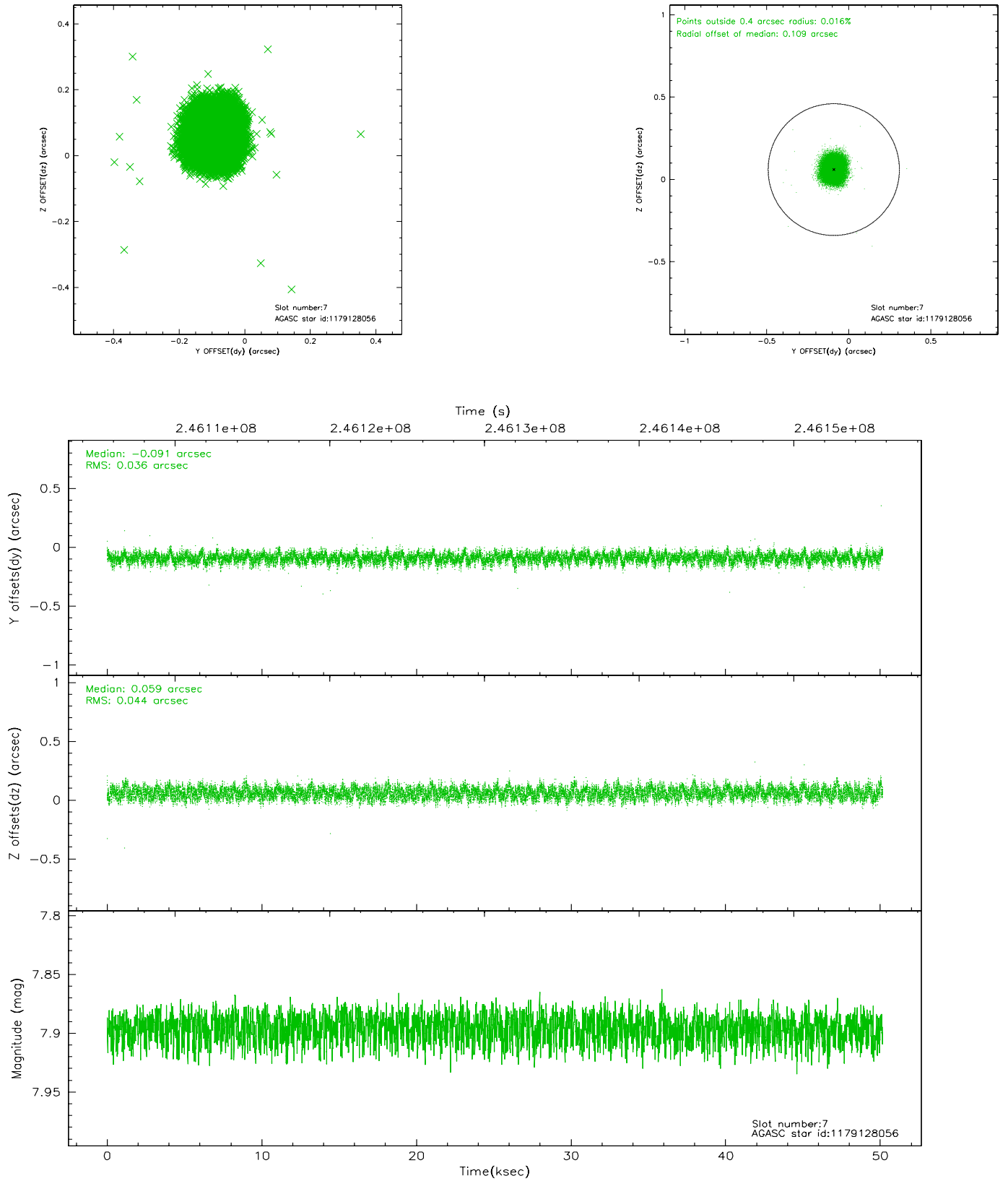
2.4.3 Slot 5



2.4.4 Slot 6

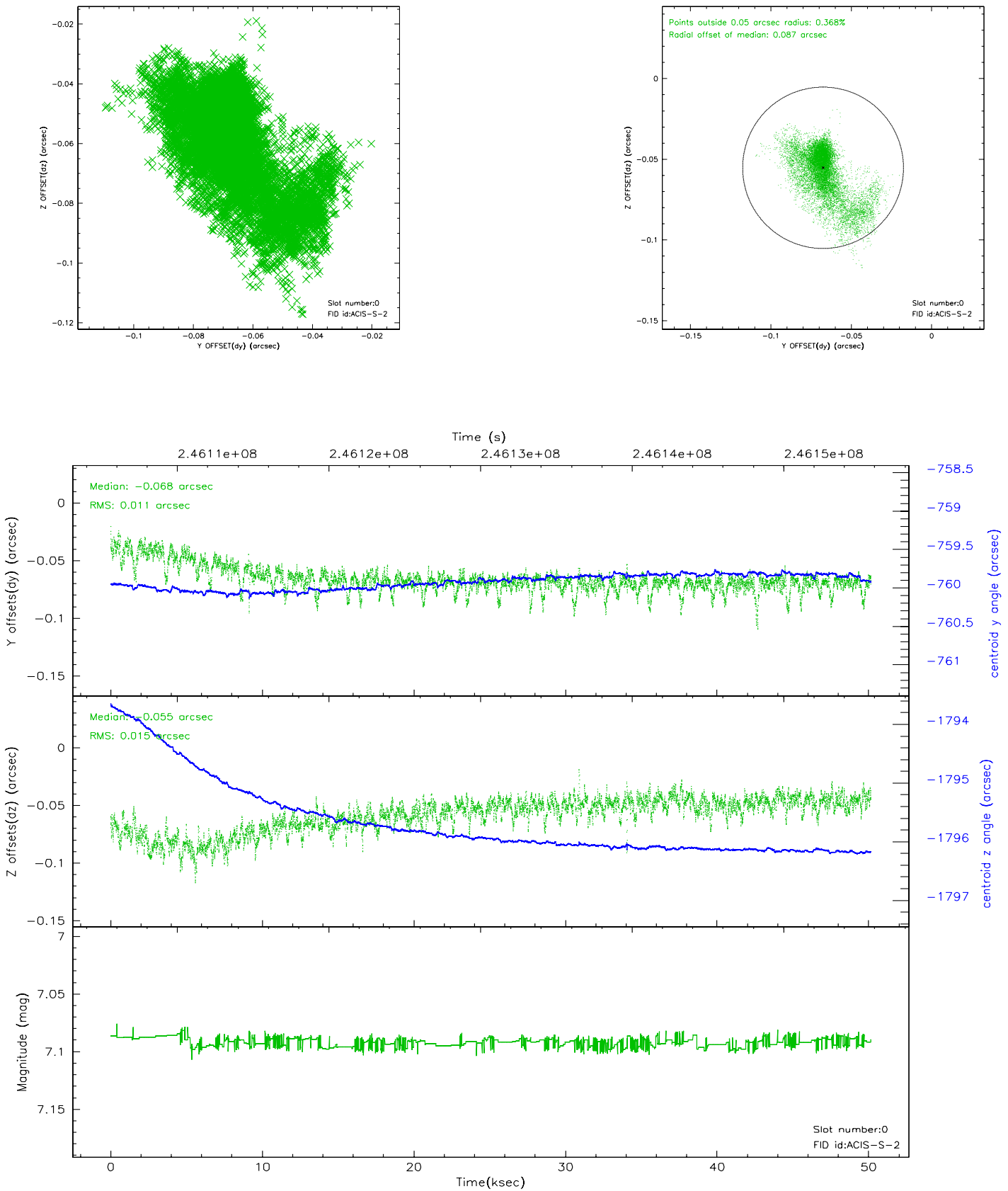


2.4.5 Slot 7

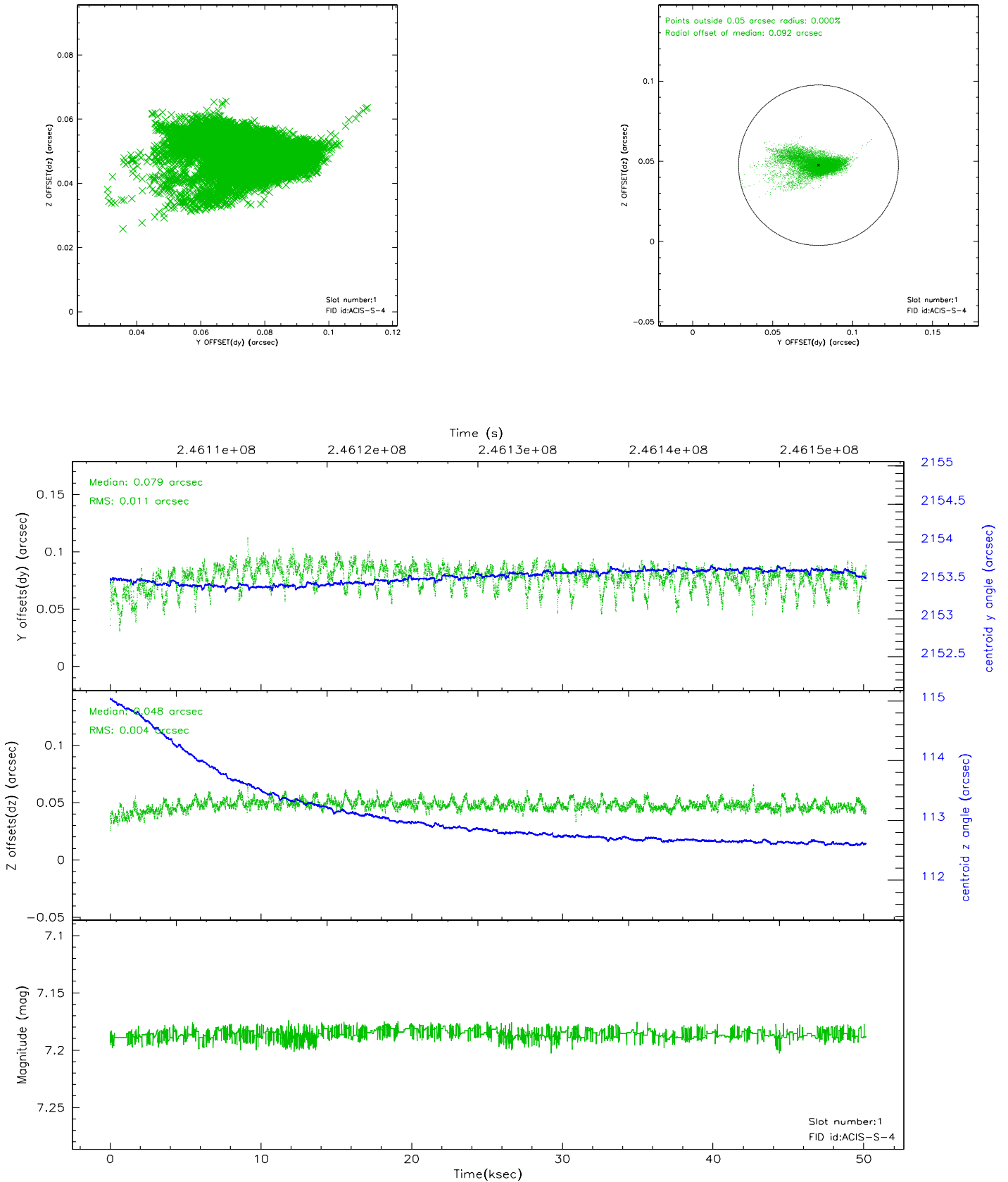


2.5 FID Slots

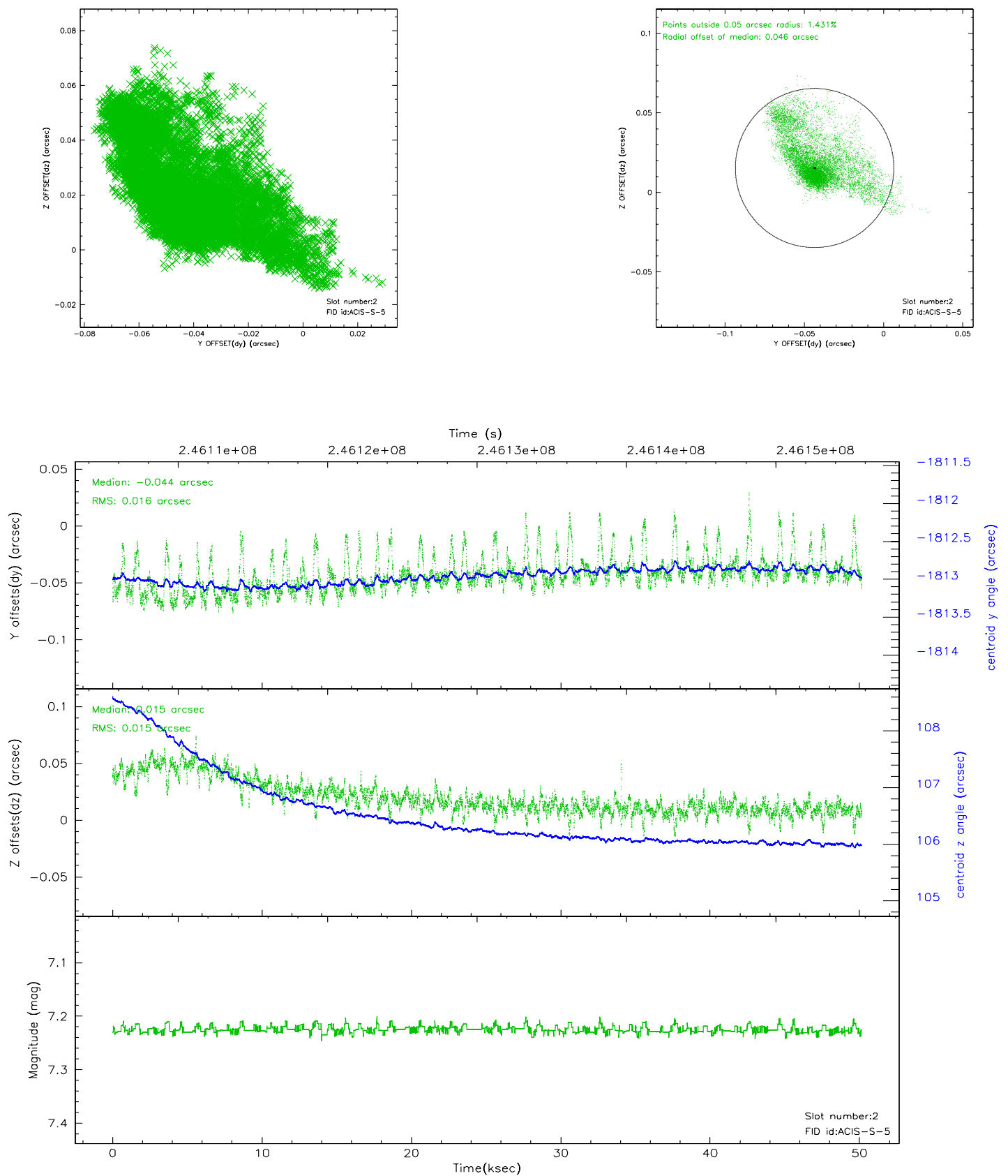
2.5.1 Slot 0



2.5.2 Slot 1



2.5.3 Slot 2



3 Gratings

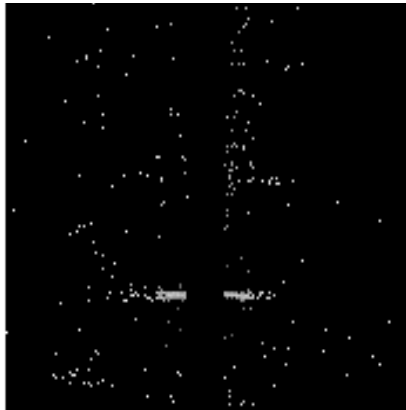
3.1 HEG Arm



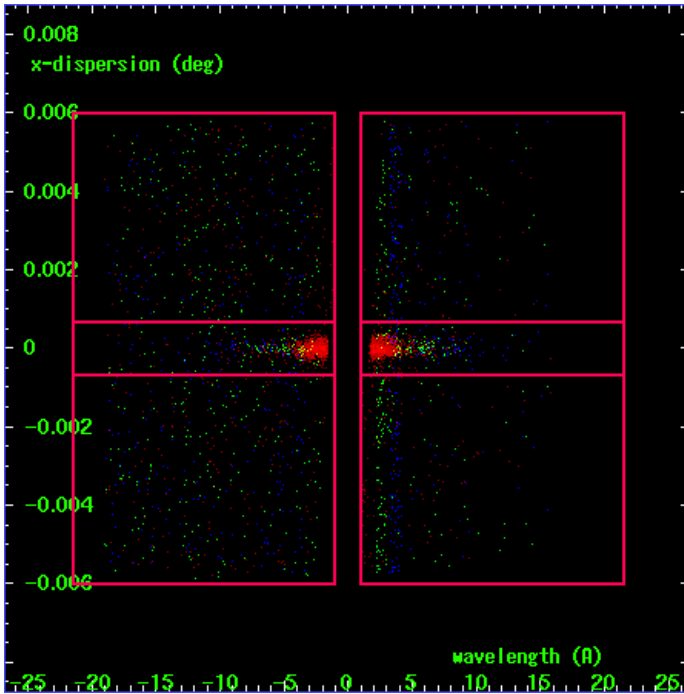
HEG Order Sort 123



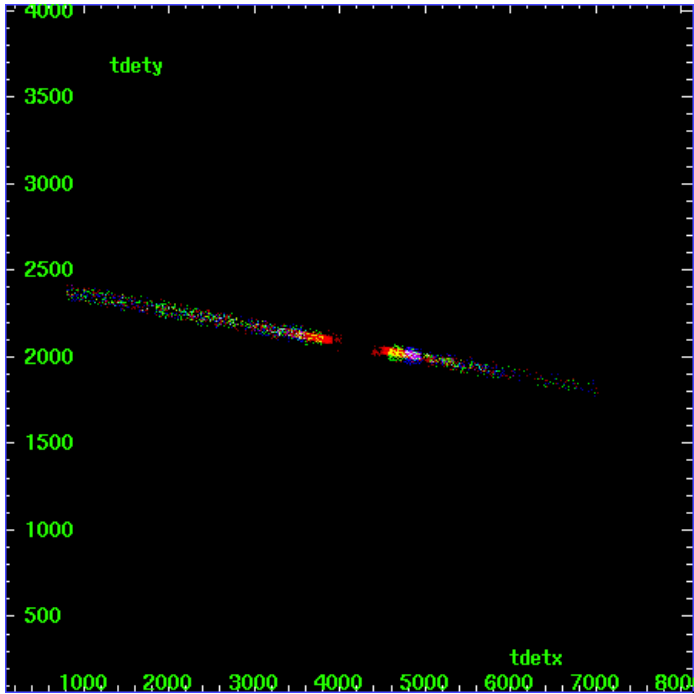
HEG Zero Order



HEG Order Sort ALL

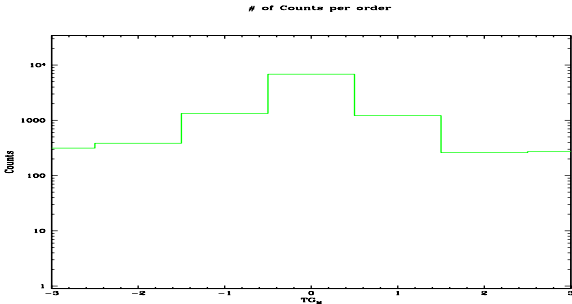


Spot Image HEG

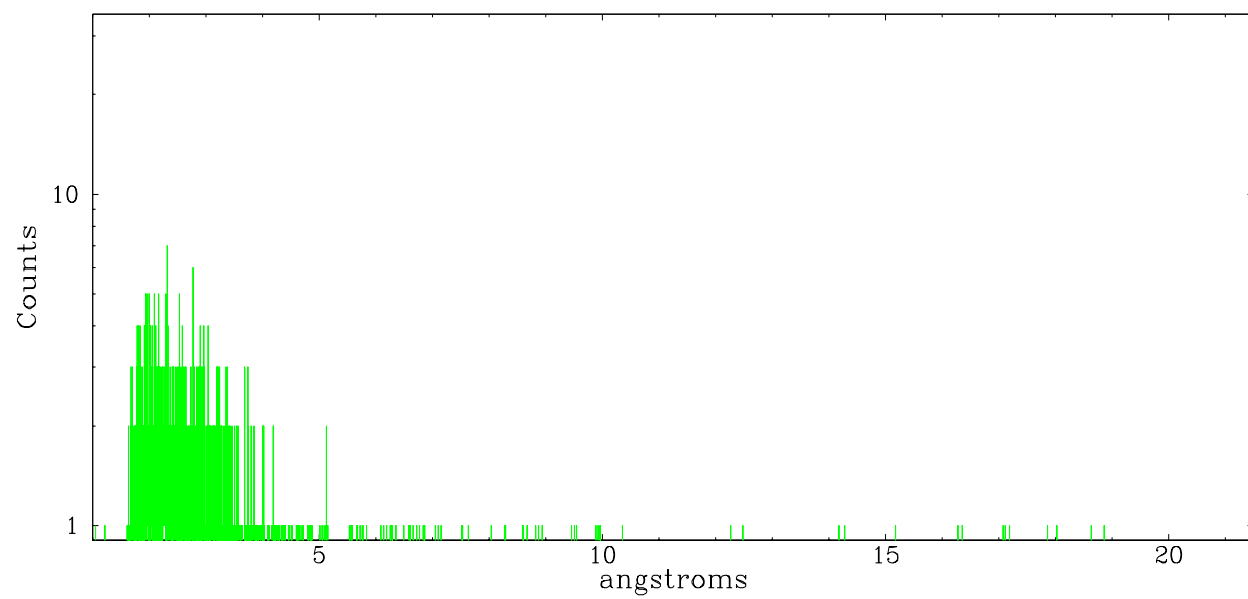


Full Detector HEG

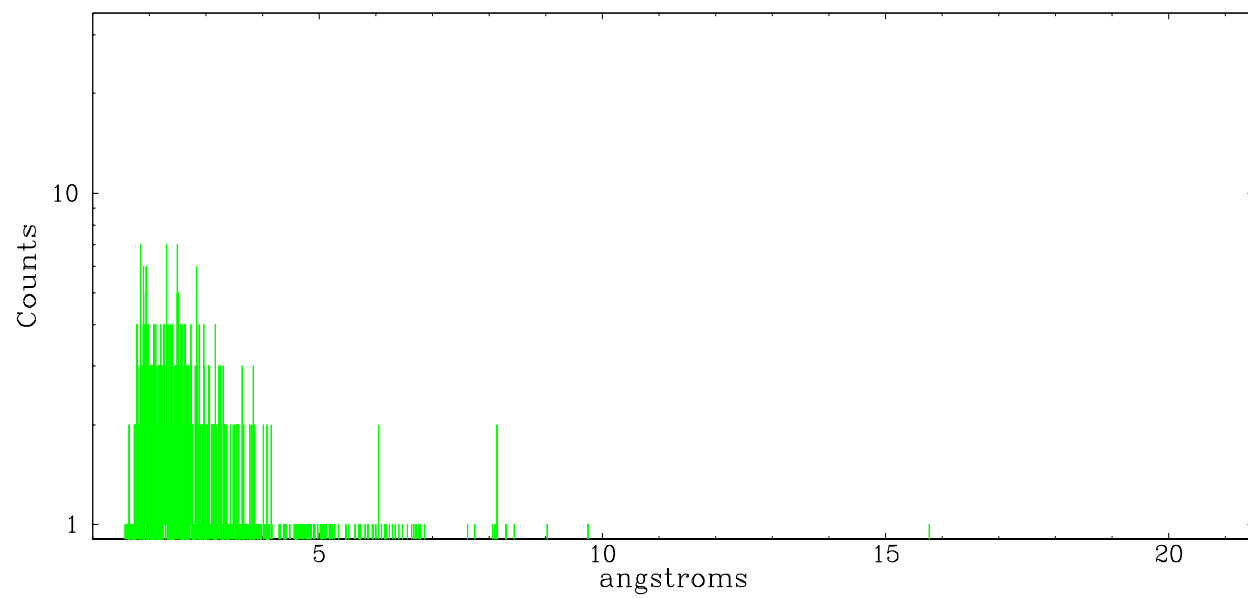
	order -3	order -2	order -1	order 0	order 1	order 2	order 3
Events	315	385	1336	6819	1212	260	271



heg order -1



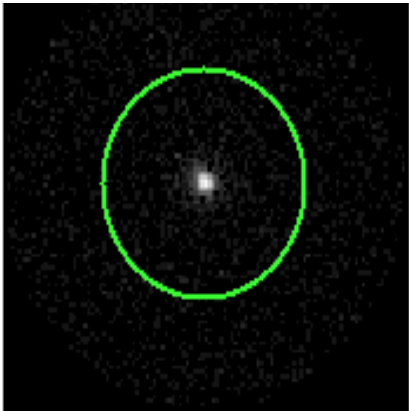
heg order +1



3.2 MEG Arm



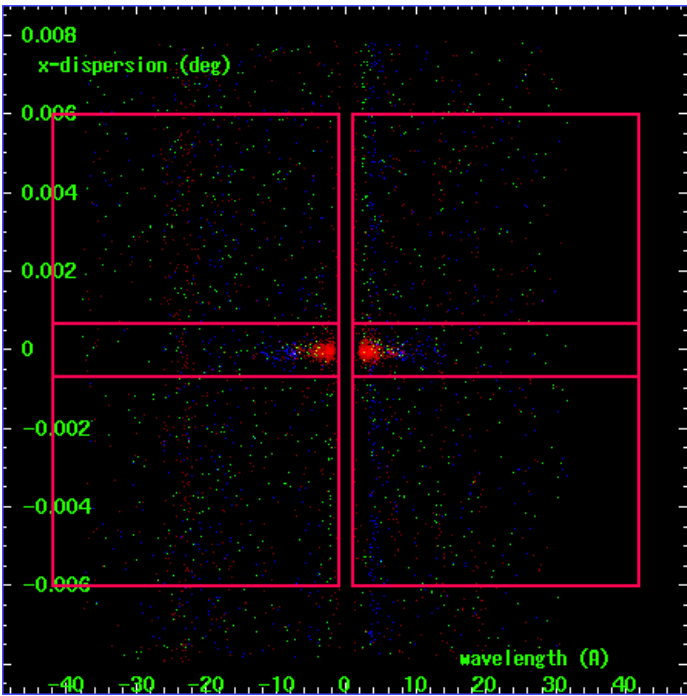
MEG Order Sort 123



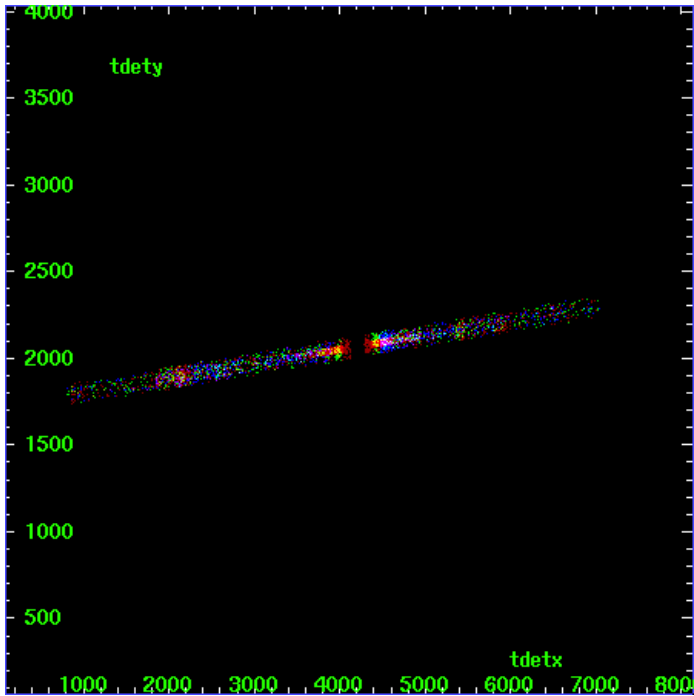
MEG Zero Order



MEG Order Sort ALL

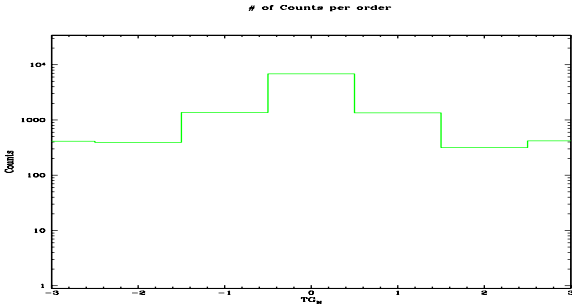


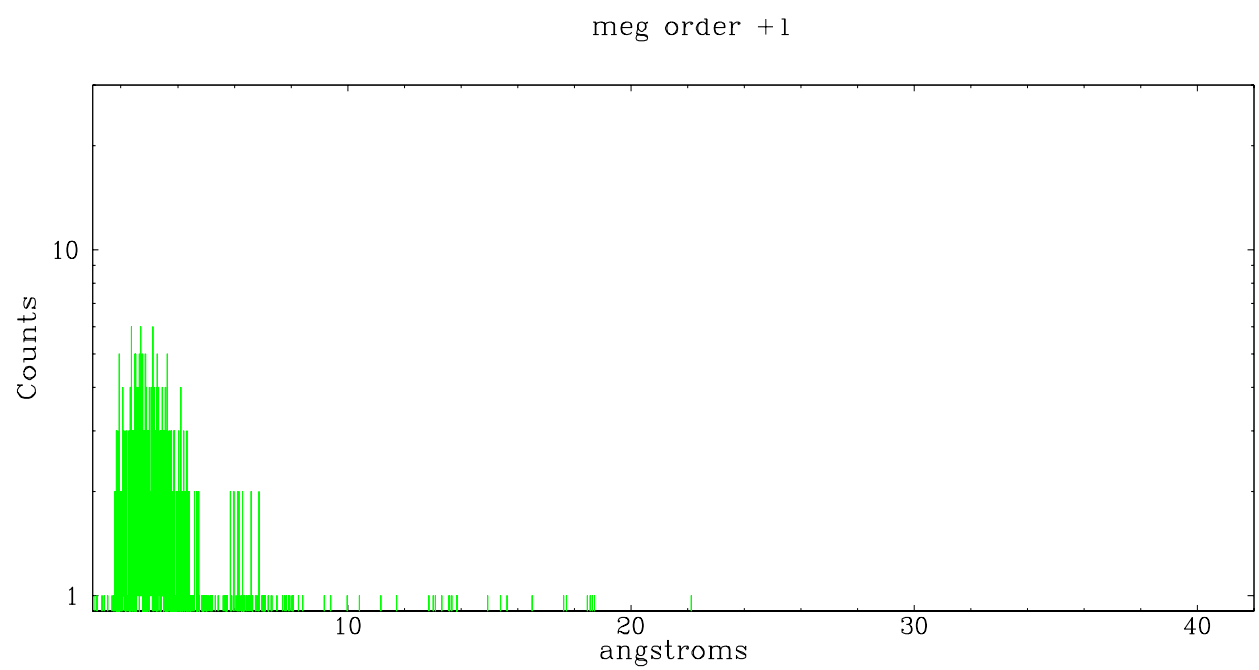
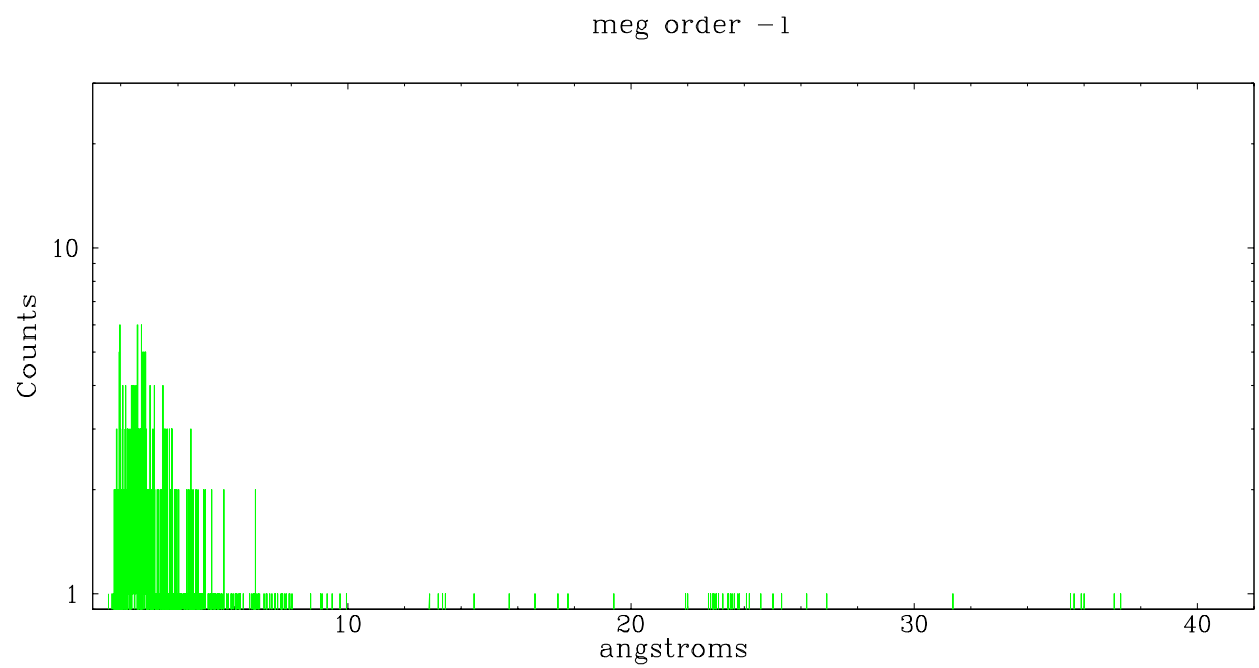
Spot Image MEG



Full Detector MEG

	order -3	order -2	order -1	order 0	order 1	order 2	order 3
Events	411	393	1371	6819	1346	317	419





A Summary

A.1 Status

V&V Scientist	Beth Sundheim
V&V Date (YYYY-MM-DD)	2006.04.03
V&V Edition	1
V&V Disposition and Status	OK
V&V Charge Time	50.155

A.2 Comments