

V&V Reference Report

L2 ASCDS Version : 8.5.1.1

Observation 6294 - L2 Version 3
Chandra X-Ray Center

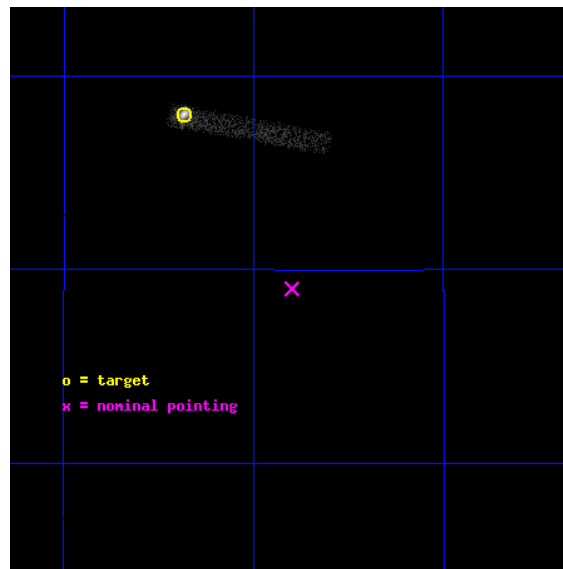
L2 Processing Date : Dec 24 2012

Contents

1	Front	2
2	OBI	3
2.1	OBI	3
2.1.1	Images	3
2.1.2	Bias	3
2.1.3	Parameters	4
2.1.4	Events	4
2.2	Compared Parameters	5
2.3	Aspect	6
2.4	Star Slots	9
2.4.1	Slot 3	9
2.4.2	Slot 4	10
2.4.3	Slot 5	11
2.4.4	Slot 6	12
2.4.5	Slot 7	13
2.5	FID Slots	14
2.5.1	Slot 0	14
2.5.2	Slot 1	15
2.5.3	Slot 2	16
A	Summary	17
A.1	Status	17
A.2	Comments	17

1 Front

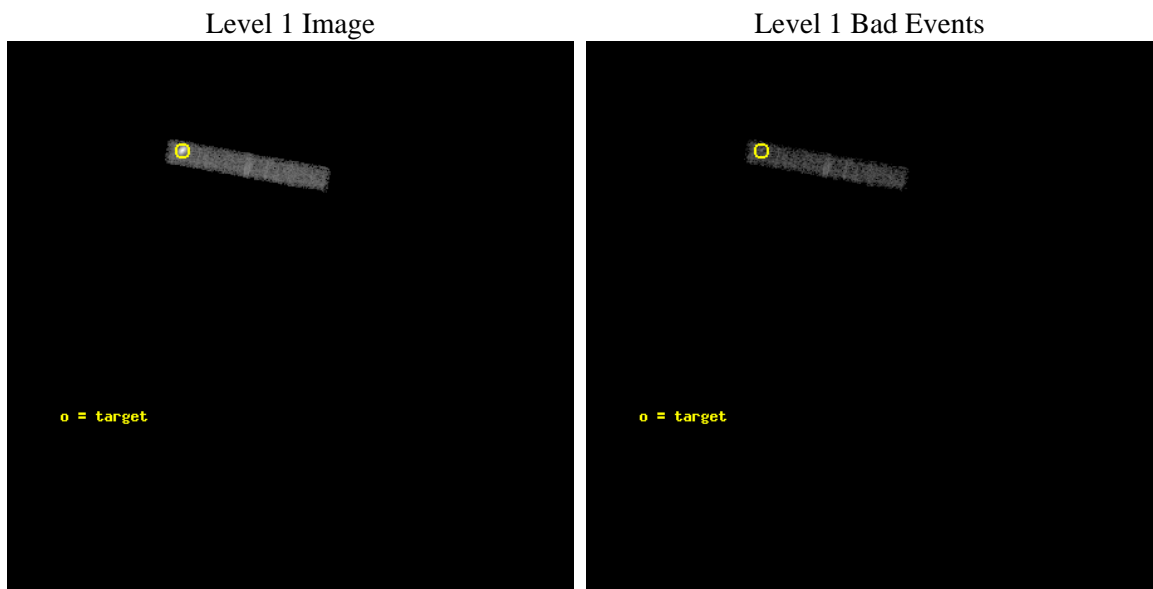
seq_num	300163	Sequence number
obs_id	6294	Observation id
title	The lightcurve and spectra of the cataclysmic variable EI UMa	Prop
observer	Dr. Peter Predehl	Principal investigator
object	EI UMa	Source name
dtcycle	0	
cycle	P	events from which exps? Prim/Second/Both
ra_targ	129.591667	Observer's specified target RA [deg]
dec_targ	48.633806	Observer's specified target Dec [deg]
ra_nom	129.44968437607	Nominal RA [deg]
dec_nom	48.483562100923	Nominal Dec [deg]
roll_nom	280.32525392132	Nominal Roll [deg]
revision	3	Processing version of data
ontime	12479.200185925	Sum of GTIs [s]
livetime	11317.975862439	Livetime [s]
ontime3	12479.200185925	Sum of GTIs [s]
l2events	17798	Number of level 2 events



2 OBI

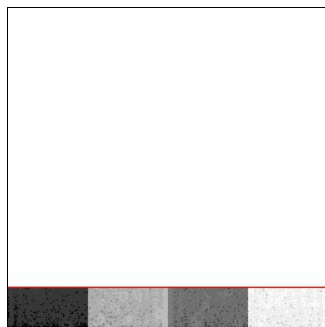
2.1 OBI

2.1.1 Images



2.1.2 Bias

Chip 3



2.1.3 Parameters

obi_num	0	Obi number	sched_exp_time	12300.000000	[s] Scheduled observation exposure time
ascdsver	8.5.1.1	Processing system revision	ontime	12479.200185925	Sum of GTIs [s]
caldsver	4.5.5	 	ontime3	12479.200185925	Sum of GTIs [s]
date	2012-12-24T13:56:33	Date and time of file creation	l1events	35175	Number of level 1 events
revision	3	Processing version of data			

2.1.4 Events

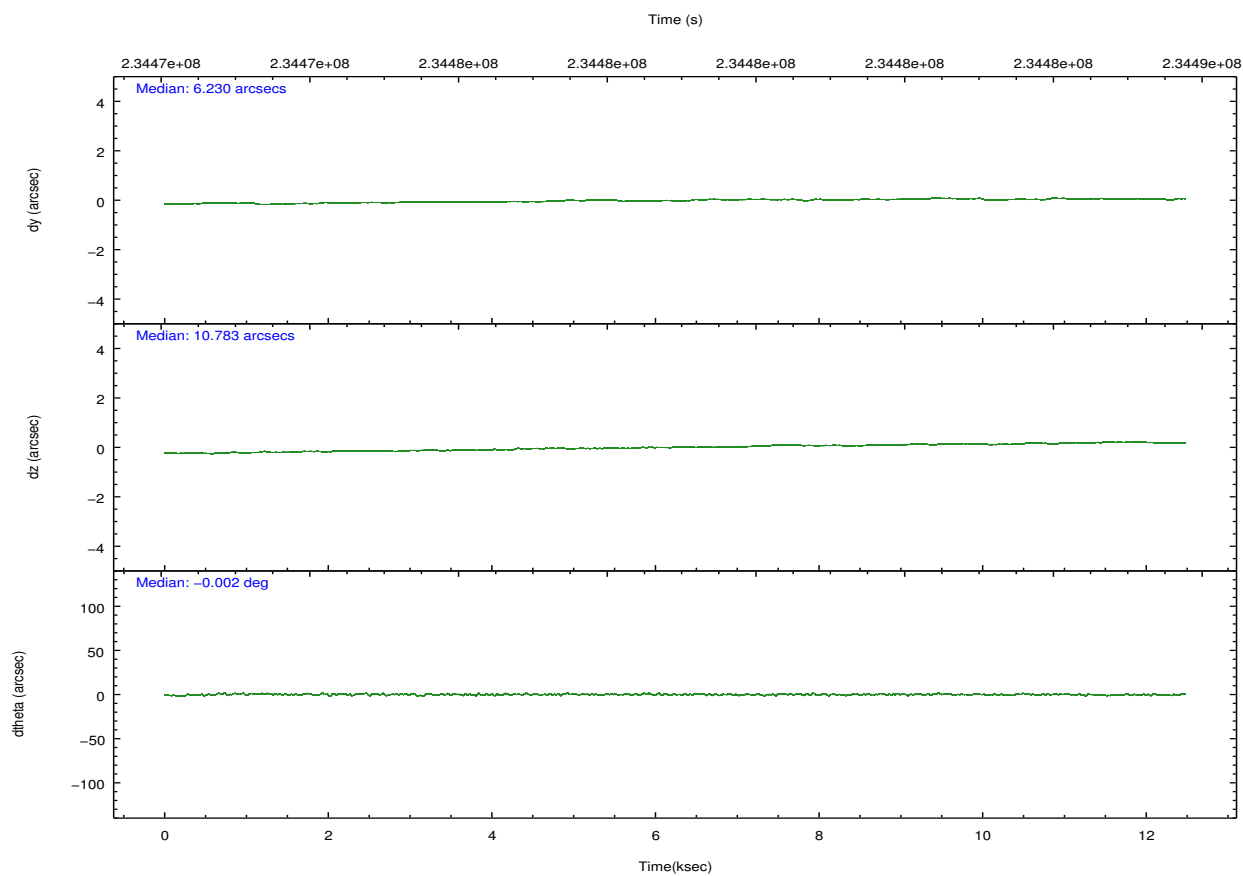
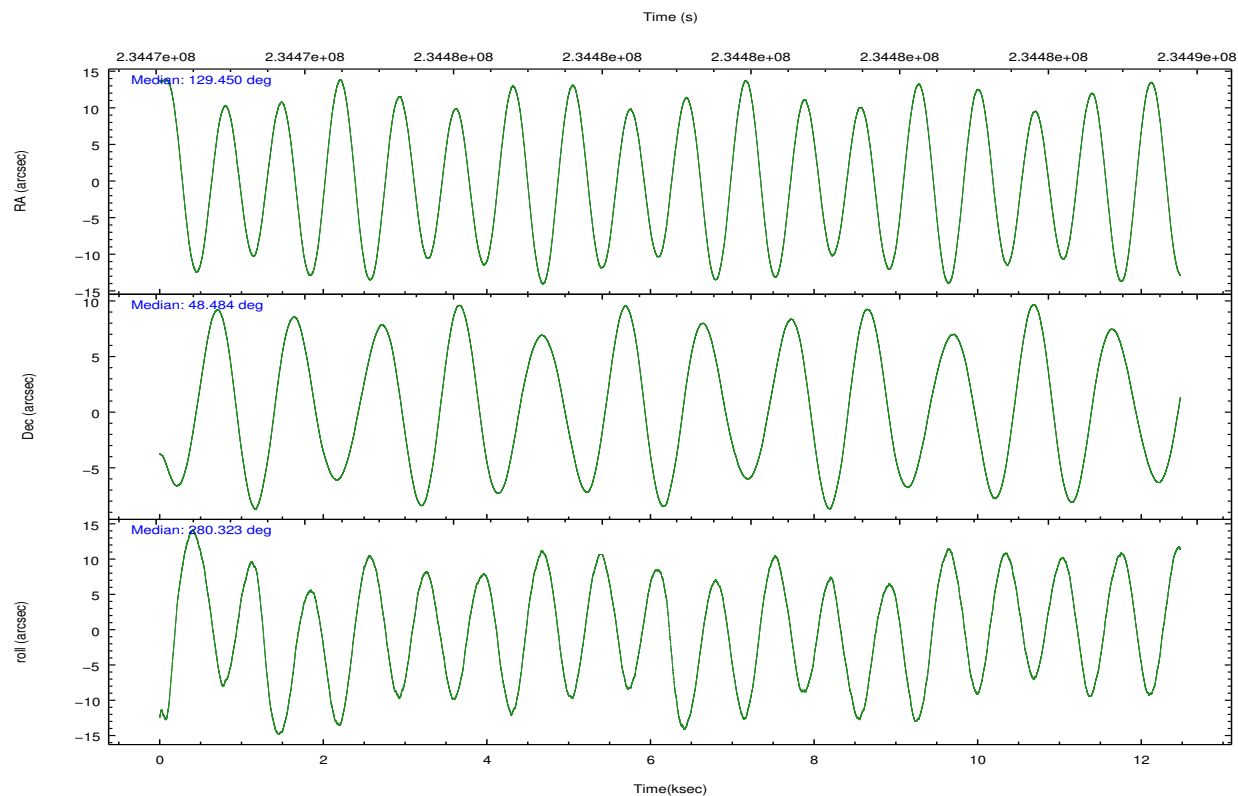
	ccd 3
level 1 events	35175
rejected events	16964
rejected %	48%

	ccd 3
grade 0 events	13102
	37%
grade 1 events	50
	0%
grade 2 events	2251
	6%
grade 3 events	1038
	2%
grade 4 events	976
	2%
grade 5 events	544
	1%
grade 6 events	1043
	2%
grade 7 events	16171
	45%

2.2 Compared Parameters

Parameter	Planned	Actual	Parameter	Planned	Actual
Instrument	ACIS	ACIS	Obspar format version number	7	7
Detector	ACIS-3	ACIS-3	Obspar file type	PREDICTED	ACTUAL
Grating	NONE	NONE	Obspar update status	NONE	UPDATED
Data mode	FAINT	FAINT	Number of optional ACIS chips dropped	0	0
Observation mode	POINTING	POINTING	On-chip summing requested	N	N
[deg] Pointing RA	129.422773	129.4496843760703	Subarray requested	CUSTOM	1/8
[deg] Pointing Dec	48.504432	48.48356210092323	Subarray start row	1	1
[deg] Pointing Roll	280.136720	280.3252539213158	Subarray row count	128	128
[mm] SIM focus pos	-0.782348	-0.7809083437167272	Alternating exposures requested	N	N
[mm] SIM defocus	0	0.001439871863259334	[s] Primary exposure time	0.000000	0.4
[mm] SIM translation stage pos	-233.592463	-233.5874344608287			
[mm] SIM translation stage offset	0	-0.005018542100998502			
[s] Observation start time (MET)	234472851.184000	234472089.90148			
Observation start date	2005-06-06T19:19:47	2005-06-06T19:08:09			
[s] Observation end time (MET)	234485151.184000	234486576.73964			
Observation end date	2005-06-06T22:44:47	2005-06-06T23:09:36			
Read mode	TIMED	TIMED			

2.3 Aspect

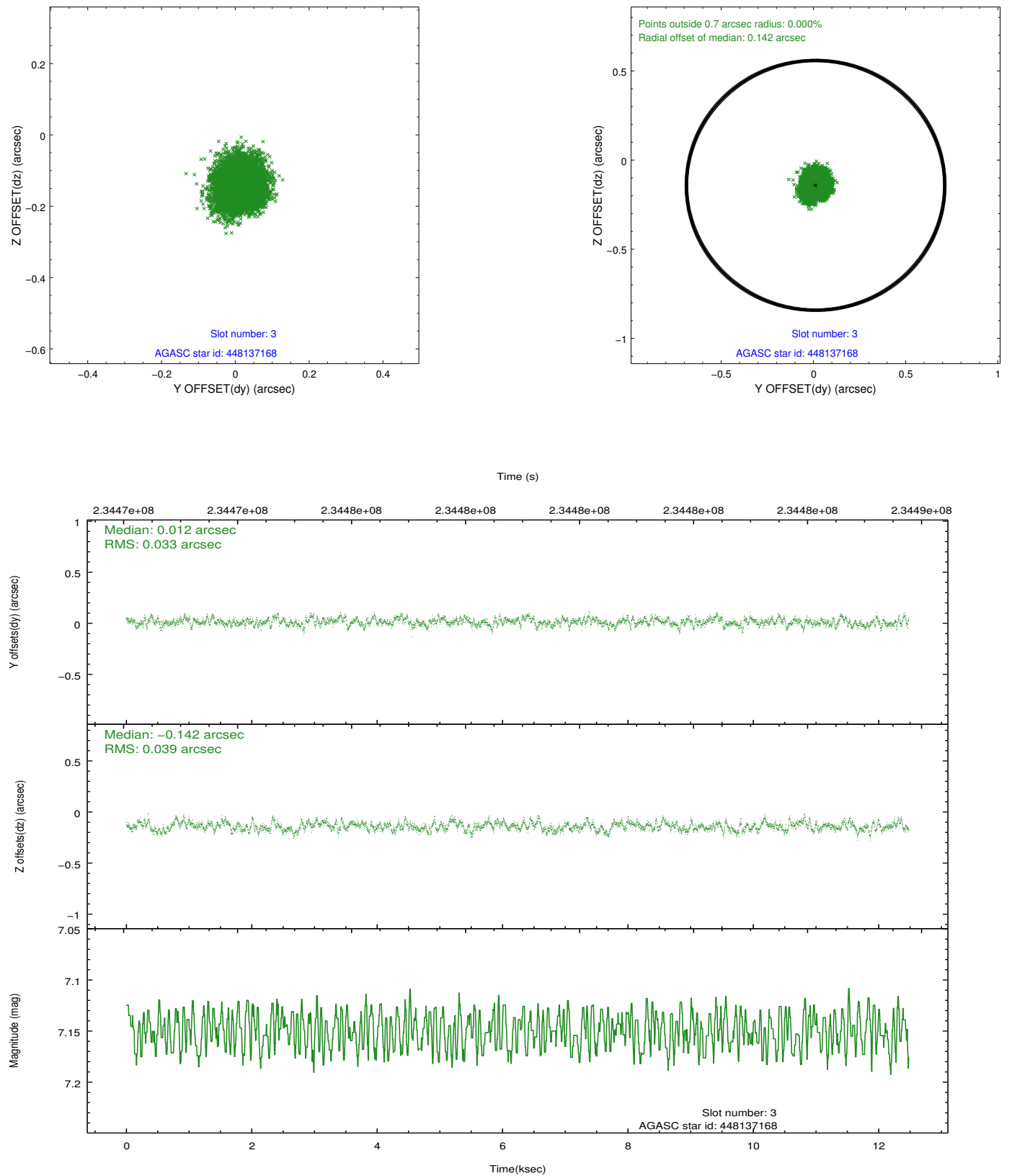


Slot Statistics

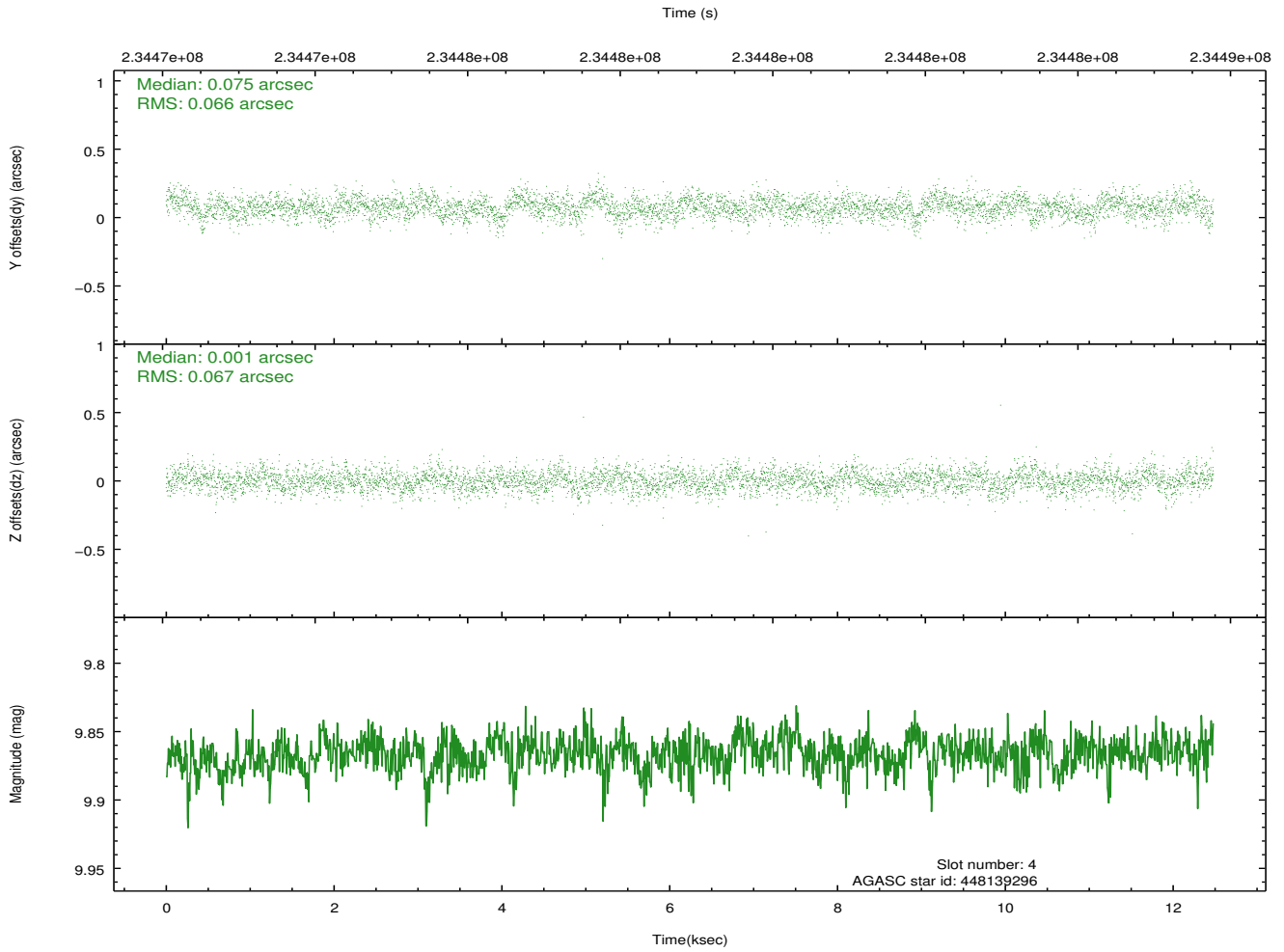
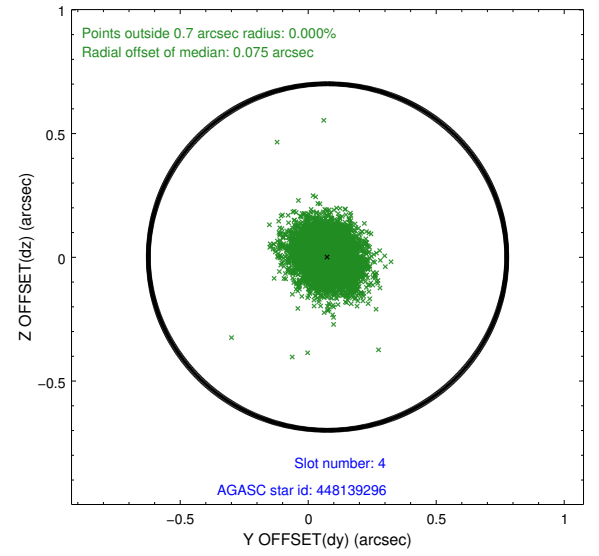
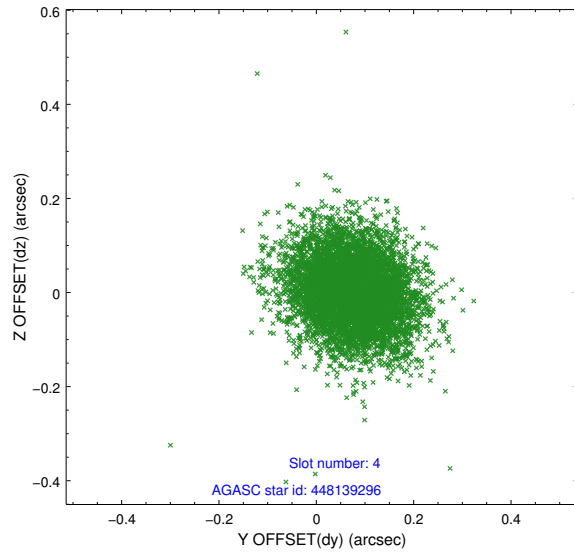
slot	status	id	mag	n_pts	med_dy	med_dz	dr1	dr2	ra	dec	mean_y	mean_z
0	FID	ACIS-I-2	7.14	3042	-0.054	-0.086	0.010	0.019	0.000000	0.000000	-760.73	-840.72
1	FID	ACIS-I-4	7.18	3044	0.085	0.060	0.006	0.011	0.000000	0.000000	2153.29	1065.40
2	FID	ACIS-I-5	7.22	3044	-0.132	0.095	0.009	0.016	0.000000	0.000000	-1814.13	1063.73
3	GUIDE	448137168	7.15	6089	0.012	-0.142	0.055	0.088	128.722836	48.533723	-404.55	-1622.77
4	GUIDE	448139296	9.87	6075	0.075	0.001	0.099	0.163	129.077095	48.192176	959.04	-1014.20
5	GUIDE	448142144	8.41	6087	-0.092	0.049	0.059	0.096	129.164615	48.332904	498.45	-716.62
6	GUIDE	448145968	9.89	6080	0.025	0.040	0.124	0.198	130.277247	48.257599	1224.65	1862.21
7	GUIDE	448145880	9.68	6017	-0.016	0.052	0.106	0.173	129.329974	49.152000	-2332.93	195.63

2.4 Star Slots

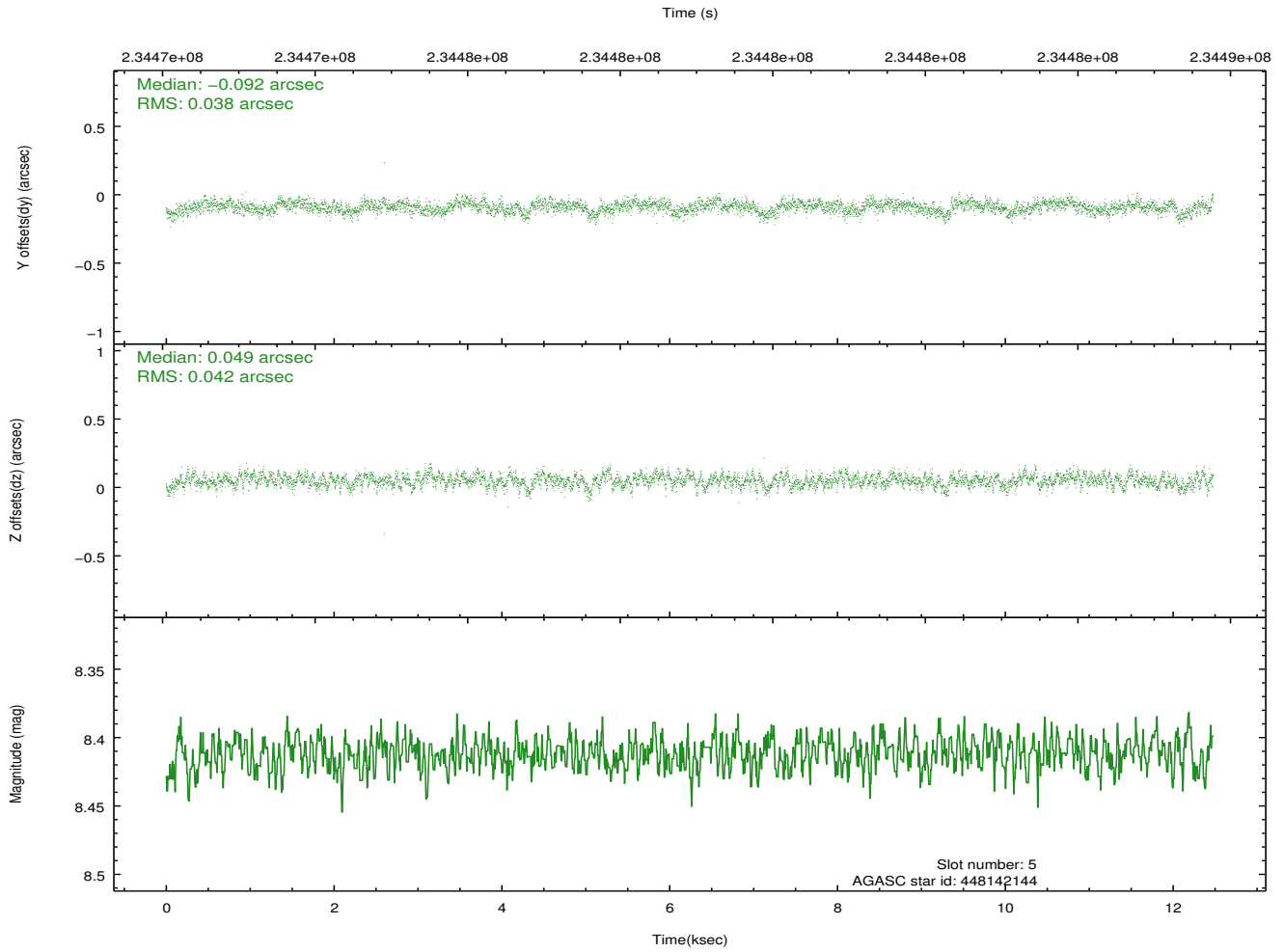
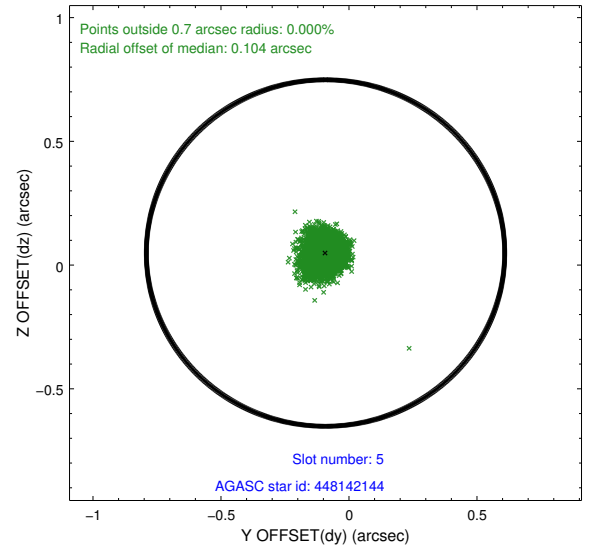
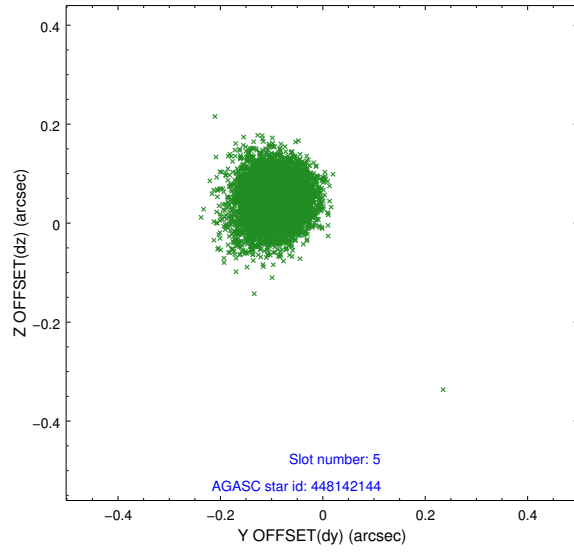
2.4.1 Slot 3



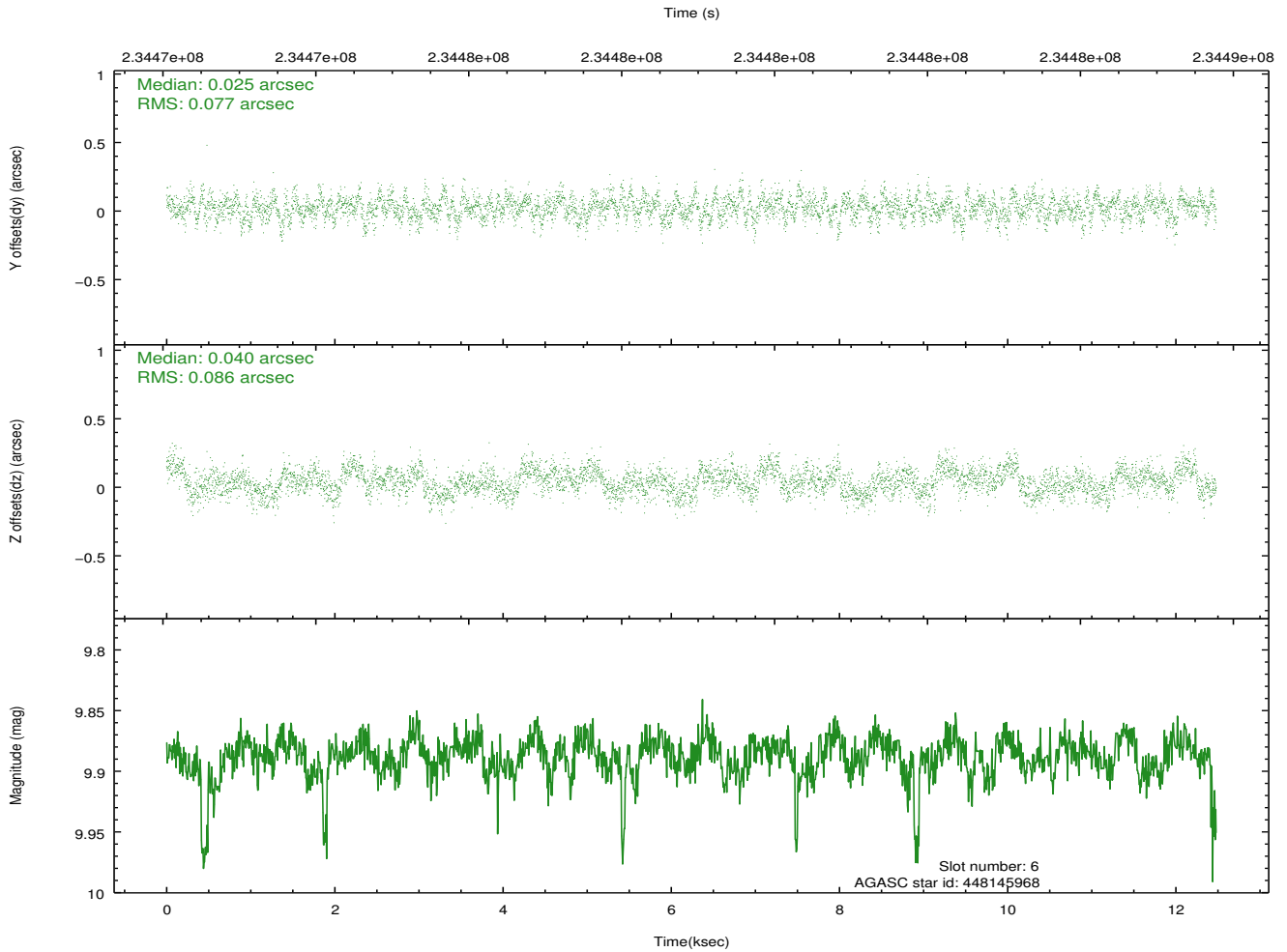
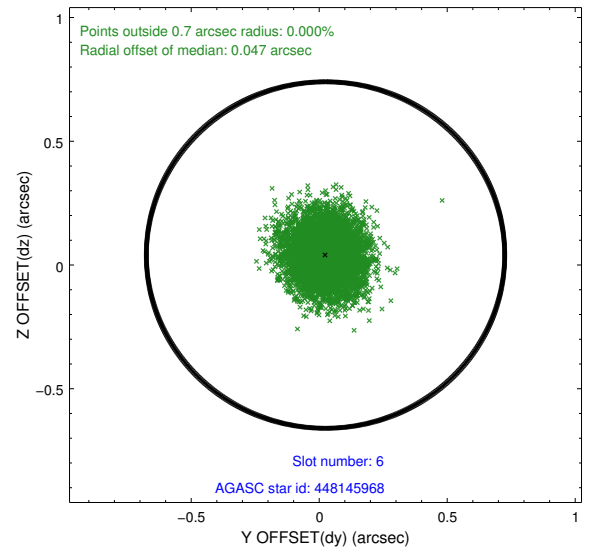
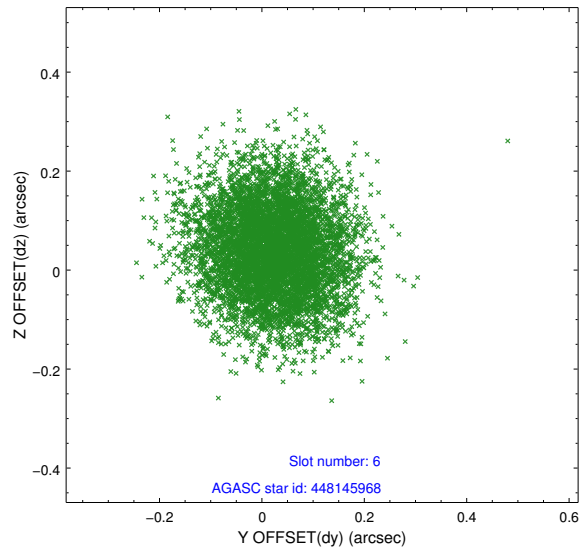
2.4.2 Slot 4



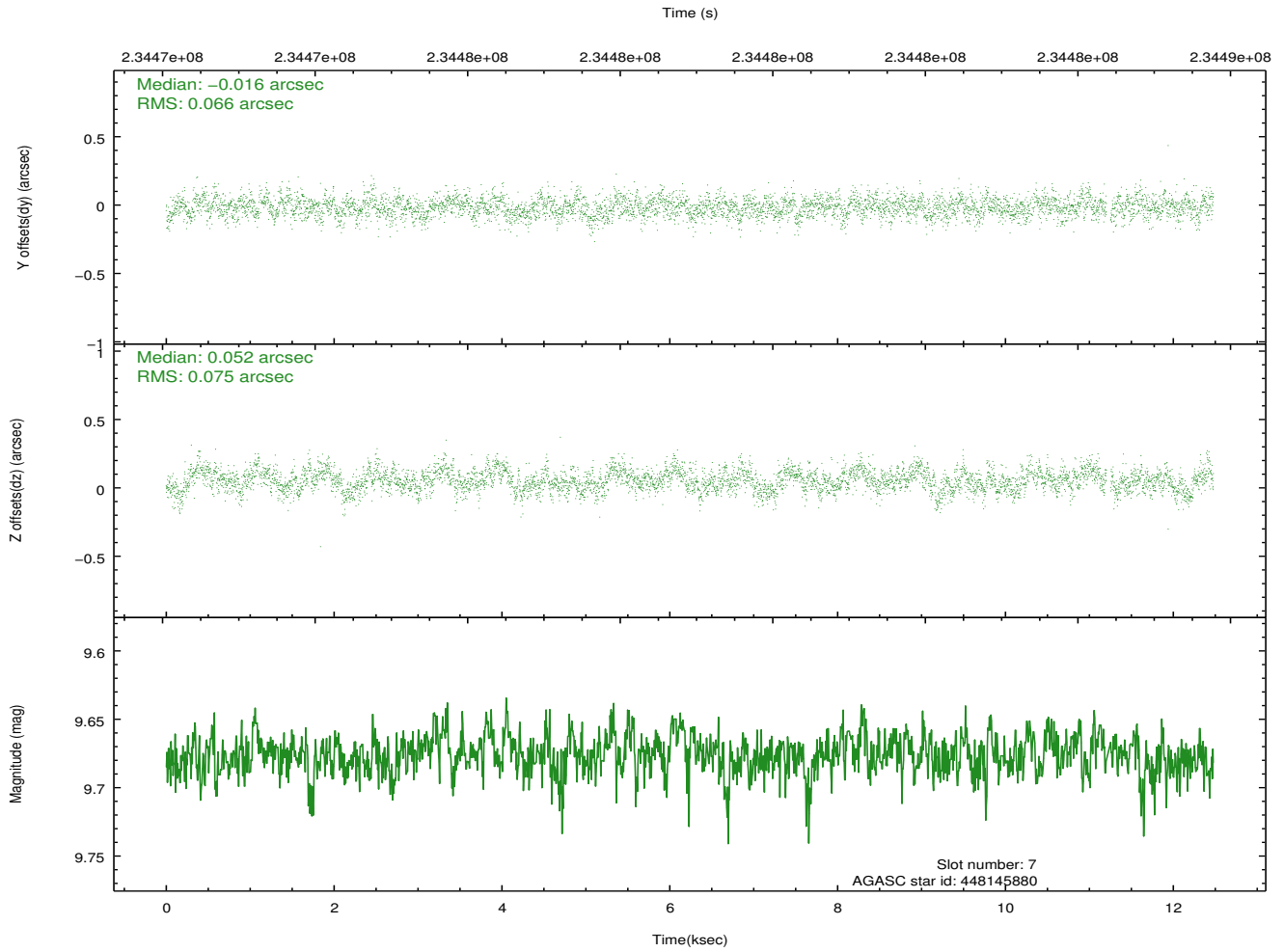
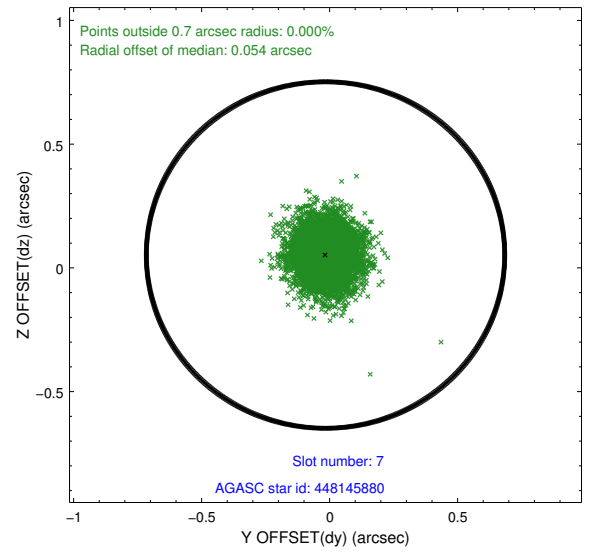
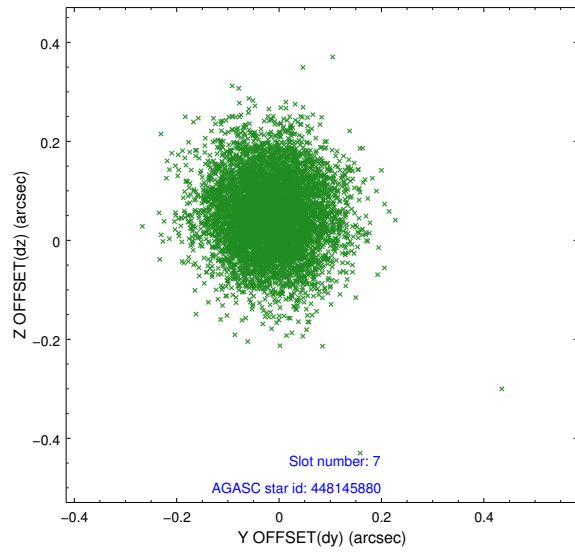
2.4.3 Slot 5



2.4.4 Slot 6

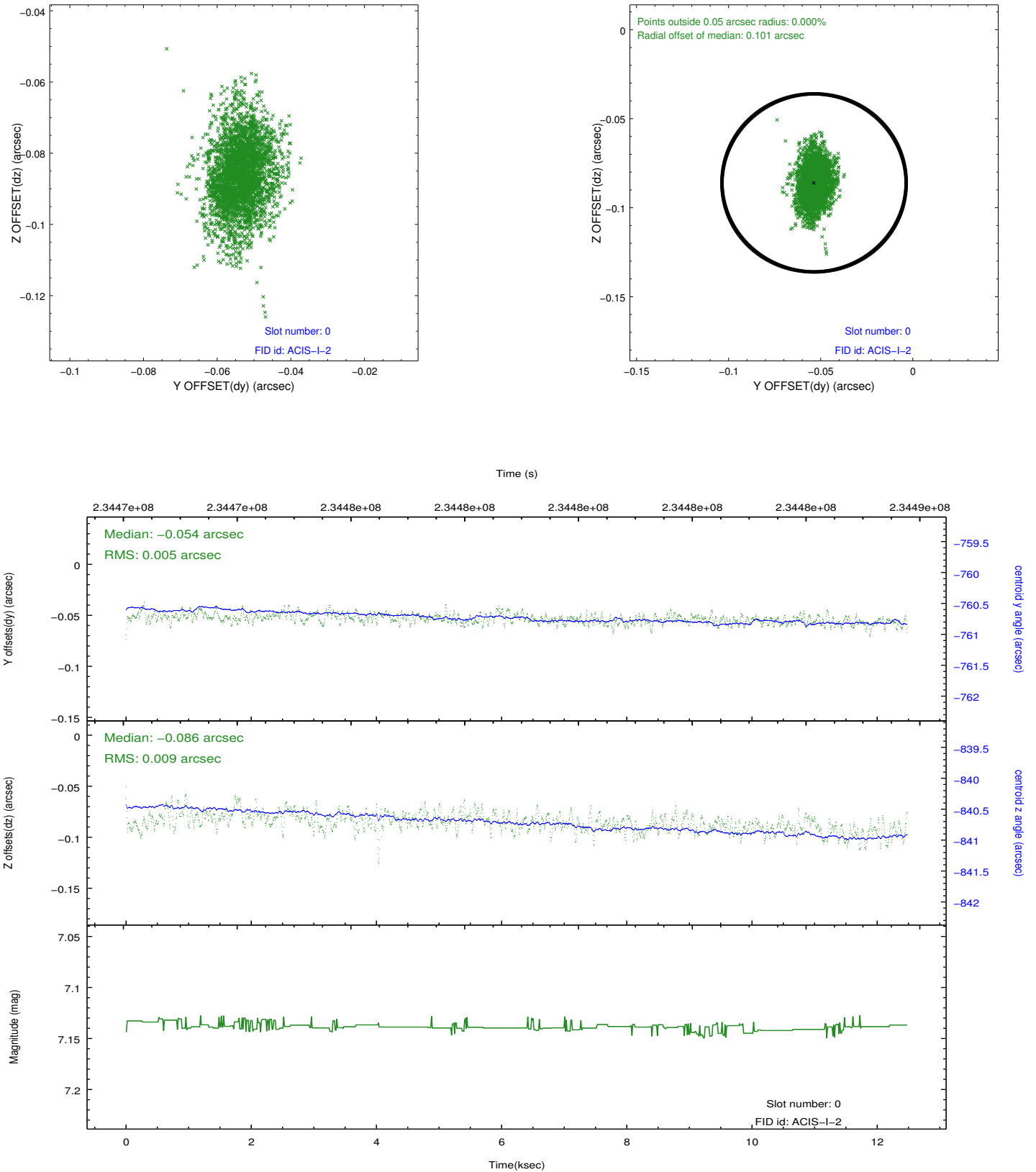


2.4.5 Slot 7

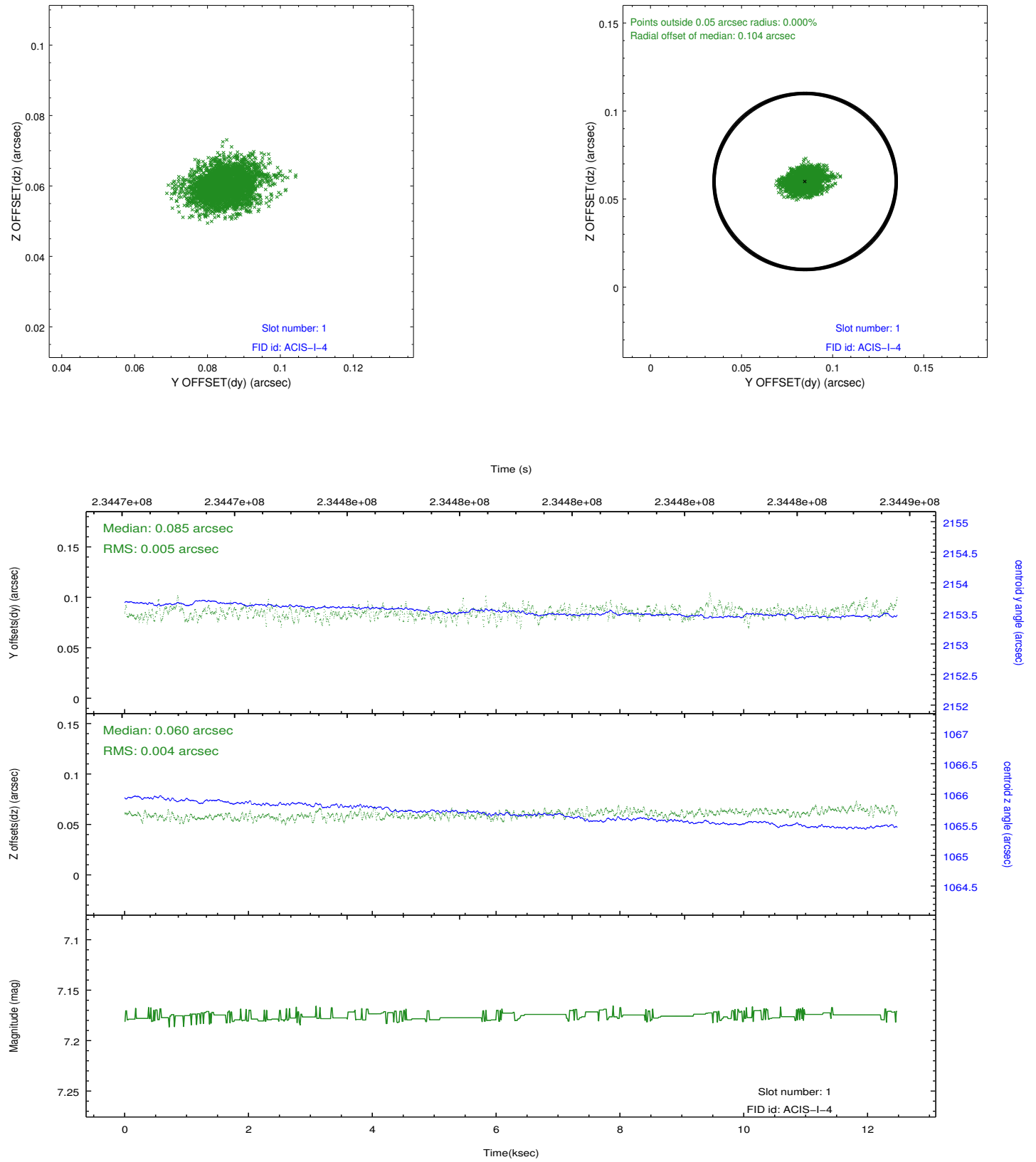


2.5 FID Slots

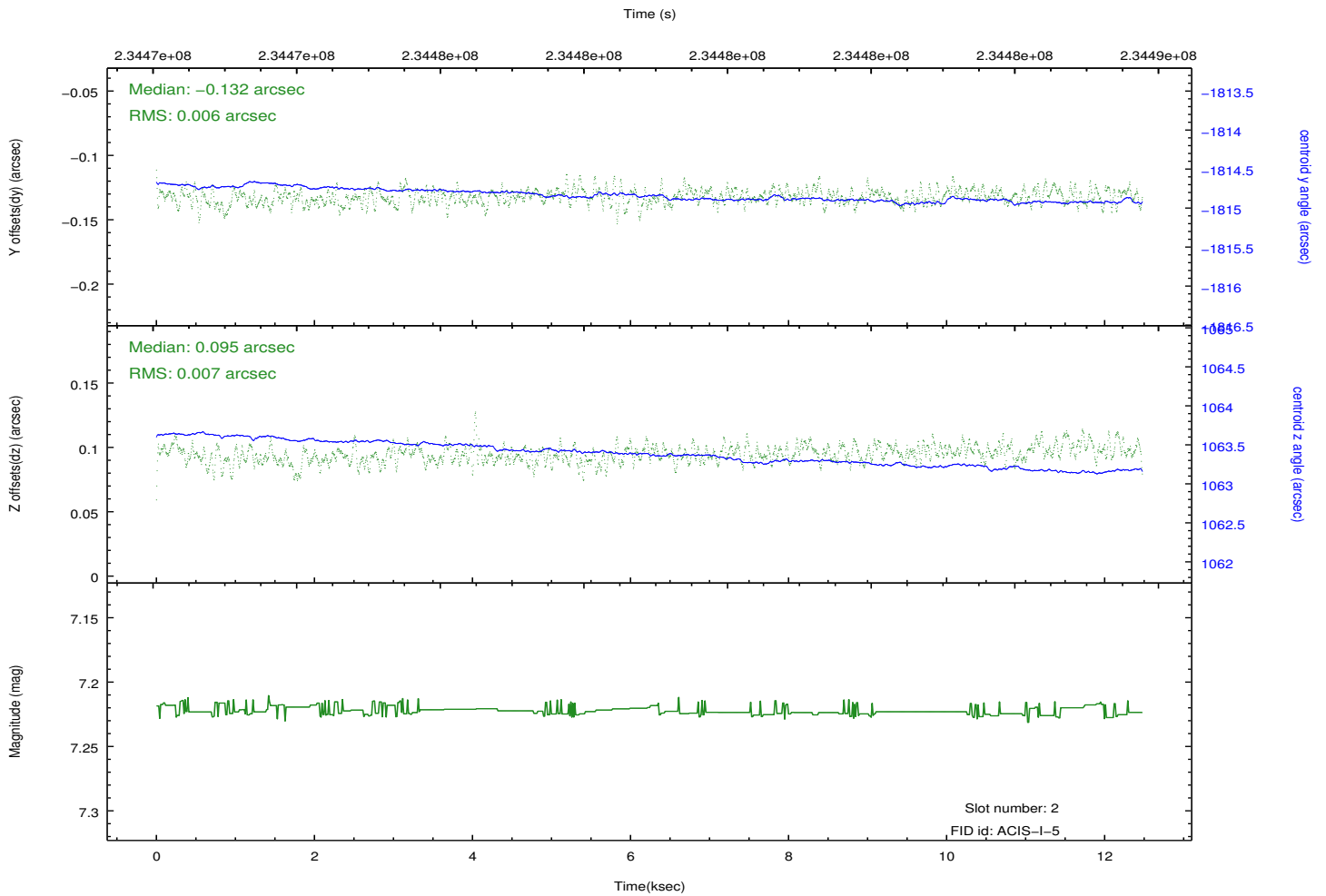
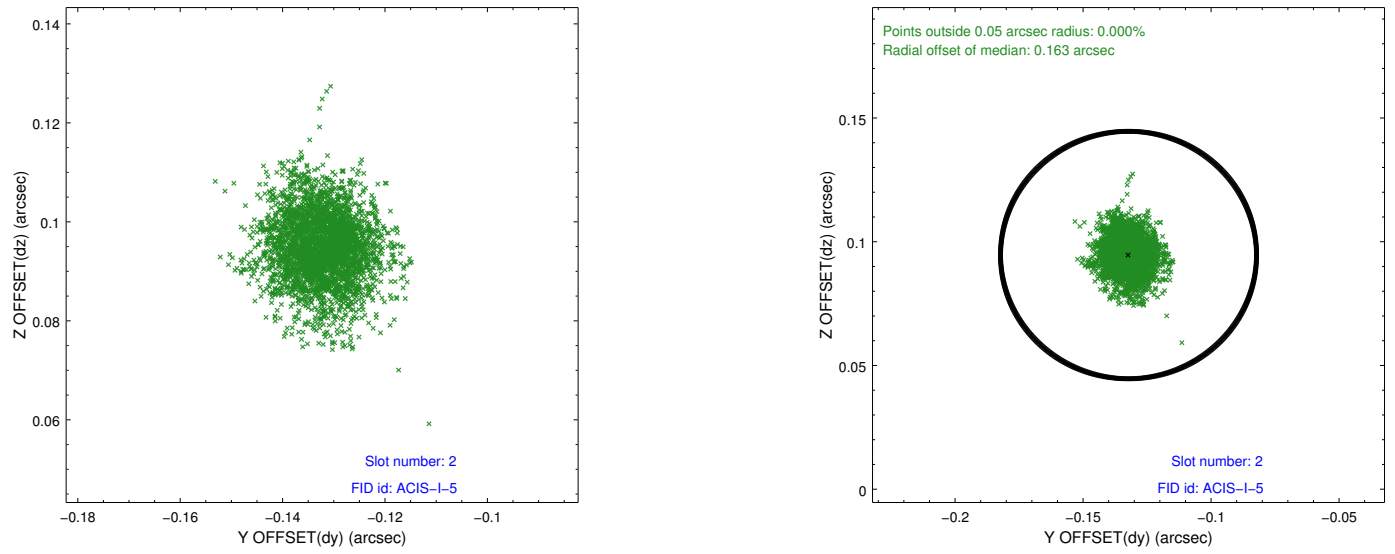
2.5.1 Slot 0



2.5.2 Slot 1



2.5.3 Slot 2



A Summary

A.1 Status

V&V Scientist	Jen Lauer
V&V Date (YYYY-MM-DD)	2013.01.17
V&V Edition	1
V&V Disposition and Status	OK
V&V Charge Time	12.4792

A.2 Comments