

# V&V Reference Report

## L2 ASCDS Version : 7.6.7

Observation 5442 - L2 Version 002  
Chandra X-Ray Center

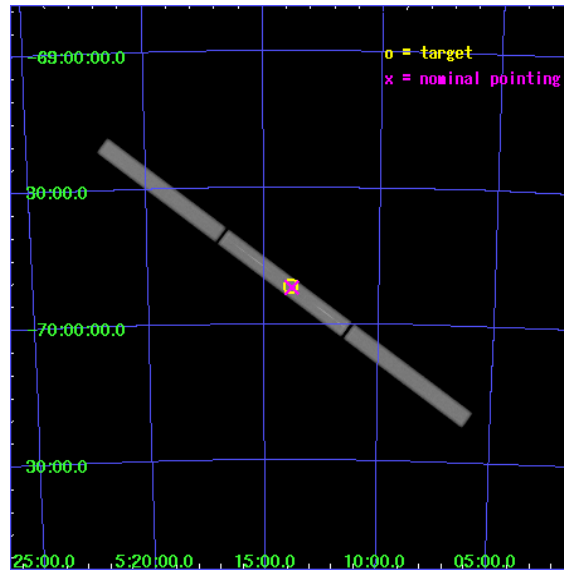
L2 Processing Date: Mar 2 2006

## Contents

<b>1</b>	<b>Front</b>	<b>2</b>
<b>2</b>	<b>OBI</b>	<b>3</b>
2.1	OBI . . . . .	3
2.1.1	Images . . . . .	3
2.1.2	Parameters . . . . .	4
2.1.3	Events . . . . .	4
2.2	Compared Parameters . . . . .	5
2.3	Aspect . . . . .	6
2.4	Star Slots . . . . .	9
2.4.1	Slot 3 . . . . .	9
2.4.2	Slot 4 . . . . .	10
2.4.3	Slot 5 . . . . .	11
2.4.4	Slot 6 . . . . .	12
2.4.5	Slot 7 . . . . .	13
2.5	FID Slots . . . . .	14
2.5.1	Slot 0 . . . . .	14
2.5.2	Slot 1 . . . . .	15
2.5.3	Slot 2 . . . . .	16
<b>3</b>	<b>Gratings</b>	<b>17</b>
3.1	LETG Arm . . . . .	17
<b>A</b>	<b>Summary</b>	<b>19</b>
A.1	Status . . . . .	19
A.2	Comments . . . . .	19

# 1 Front

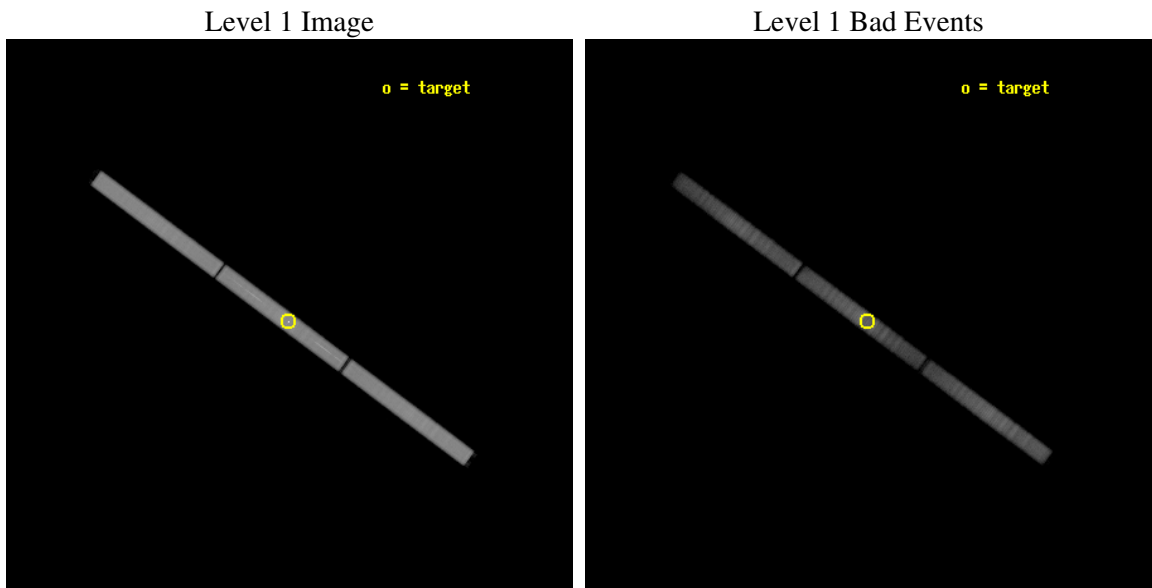
seq_num	300158
obs_id	5442
title	Testing Accretion Scenarios at the Eddington Limit
observer	Dr. Vadim Burwitz
object	RXJ0513.9-6951
ra_targ	78.461667
dec_targ	-69.863056
ra_nom	78.450481950389
dec_nom	-69.865711648222
roll_nom	216.52249797997
revision	2
ontime	25679.582419336
livetime	25517.209236481
l2events	1399223



## 2 OBI

### 2.1 OBI

#### 2.1.1 Images



### 2.1.2 Parameters

obi_num	0
ascdsver	7.6.7
caldsver	3.2.1
date	2006-03-02T13:19:10
revision	2

sched_exp_time	25500.000000
ontime	25679.582419336
l1events	2105246

### 2.1.3 Events

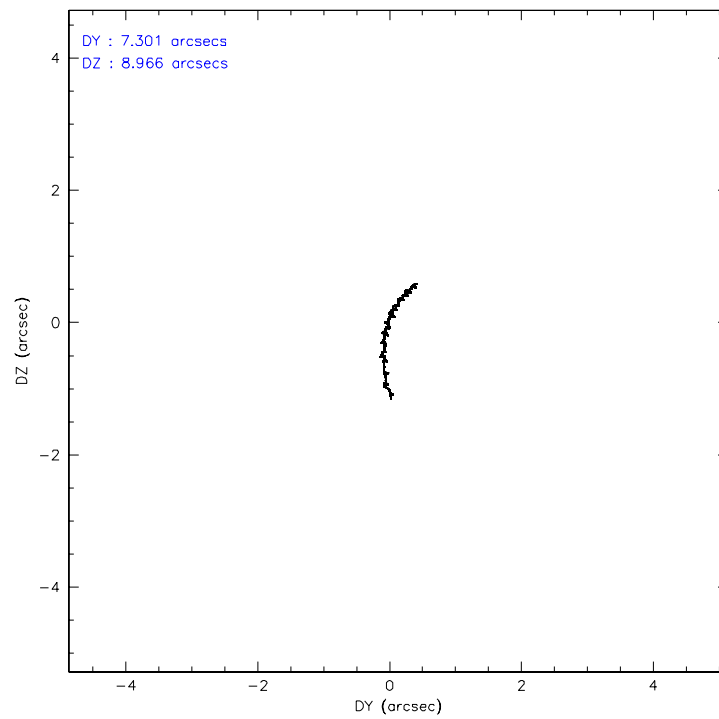
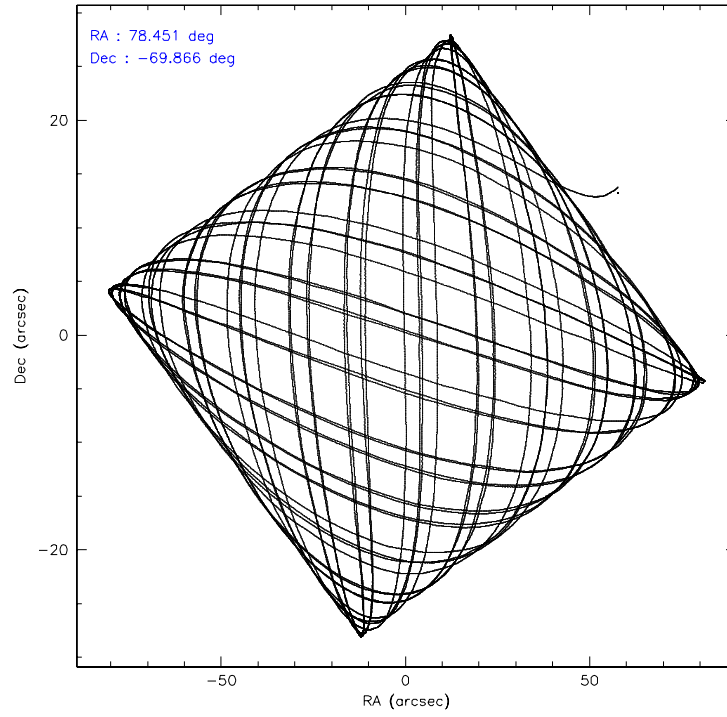
Level 1 Events

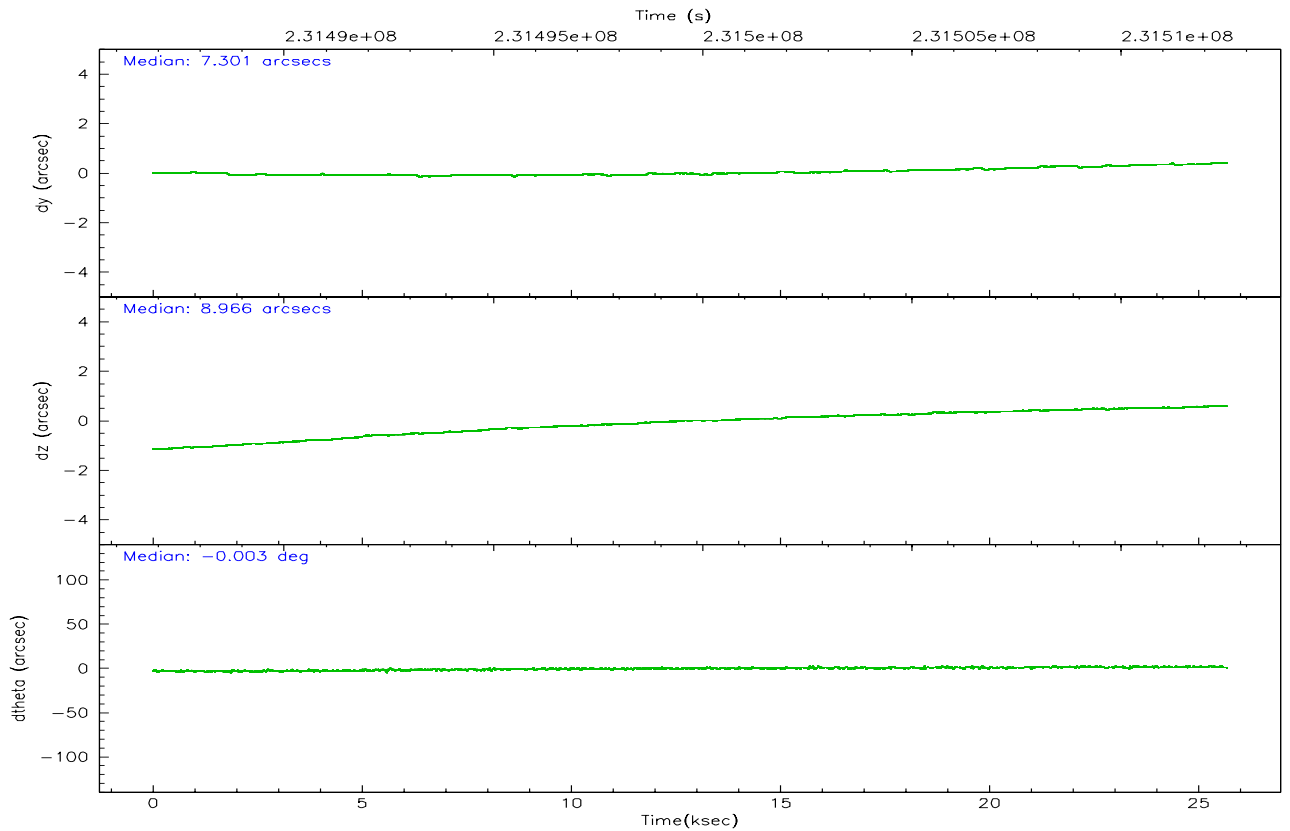
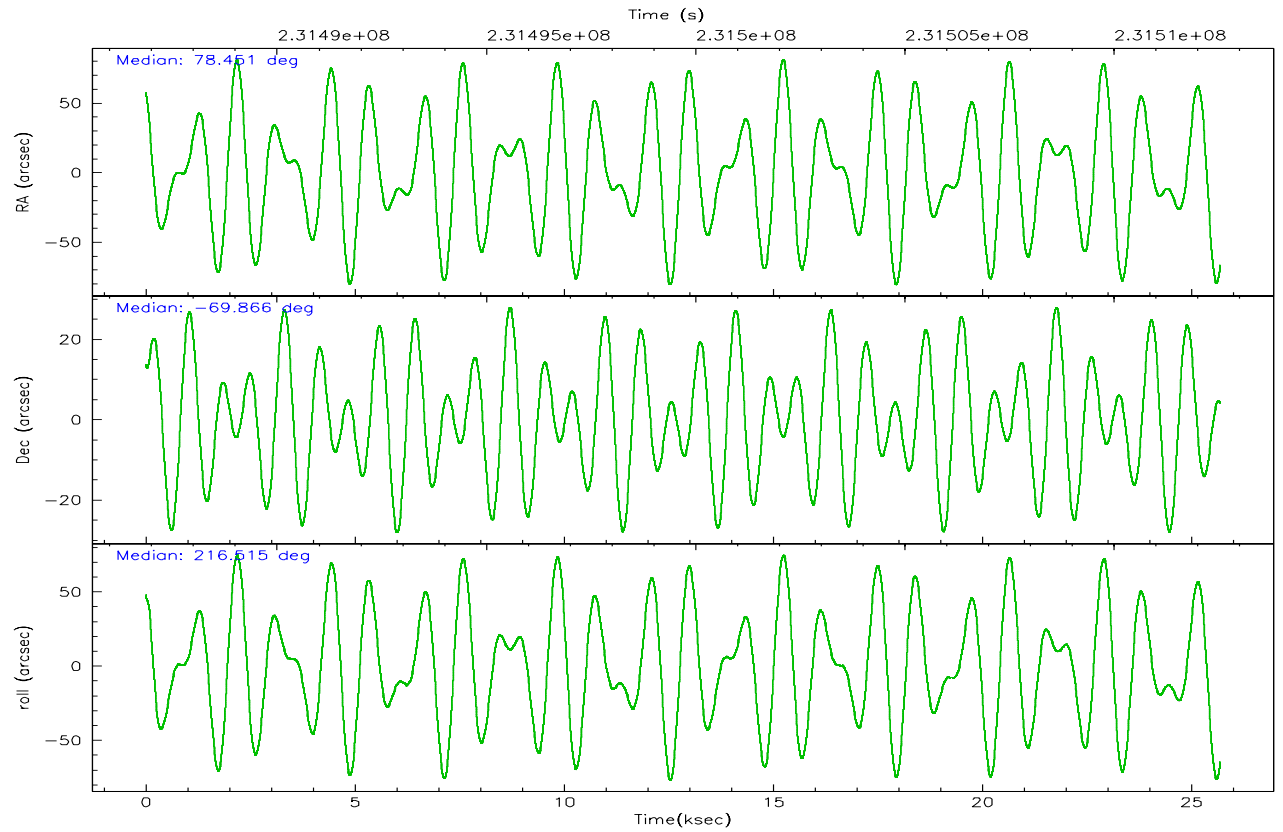
	<b>segment 1</b>	<b>segment 2</b>	<b>segment 3</b>
level 1 events	697498	708276	699472
rejected events	156629	170555	187977
rejected %	22%	24%	26%

## 2.2 Compared Parameters

Parameter	Planned	Actual	Parameter	Planned	Actual
Instrument	HRC	HRC	Obspar format version number	6	6
Detector	HRC-S	HRC-S	Obspar file type	PREDICTED	ACTUAL
Grating	LETG	LETG	Obspar update status	NONE	UPDATED
Data mode	OBSERVING	OBSERVING			
Observation mode	POINTING	POINTING			
Pointing RA	78.479760	78.45048195038866			
Pointing Dec	-69.838965	-69.86571164822246			
Pointing Roll	216.482658	216.5224979799728			
SIM focus pos (mm)	-1.429586	-1.428180813131781			
SIM defocus (mm)	0.1037507710433287	0.1051558262725154			
SIM translation stage pos (mm)	250.455976	250.466033080201			
SIM translation stage offset (mm)	0	-0.01005468664627074			
Observation start time	231487046.184000	231486028.50291			
Observation start date	2005-05-03T05:56:22	2005-05-03T05:40:28			
Observation end time	231512546.184000	231513532.84166			
Observation end date	2005-05-03T13:01:22	2005-05-03T13:18:52			

## 2.3 Aspect





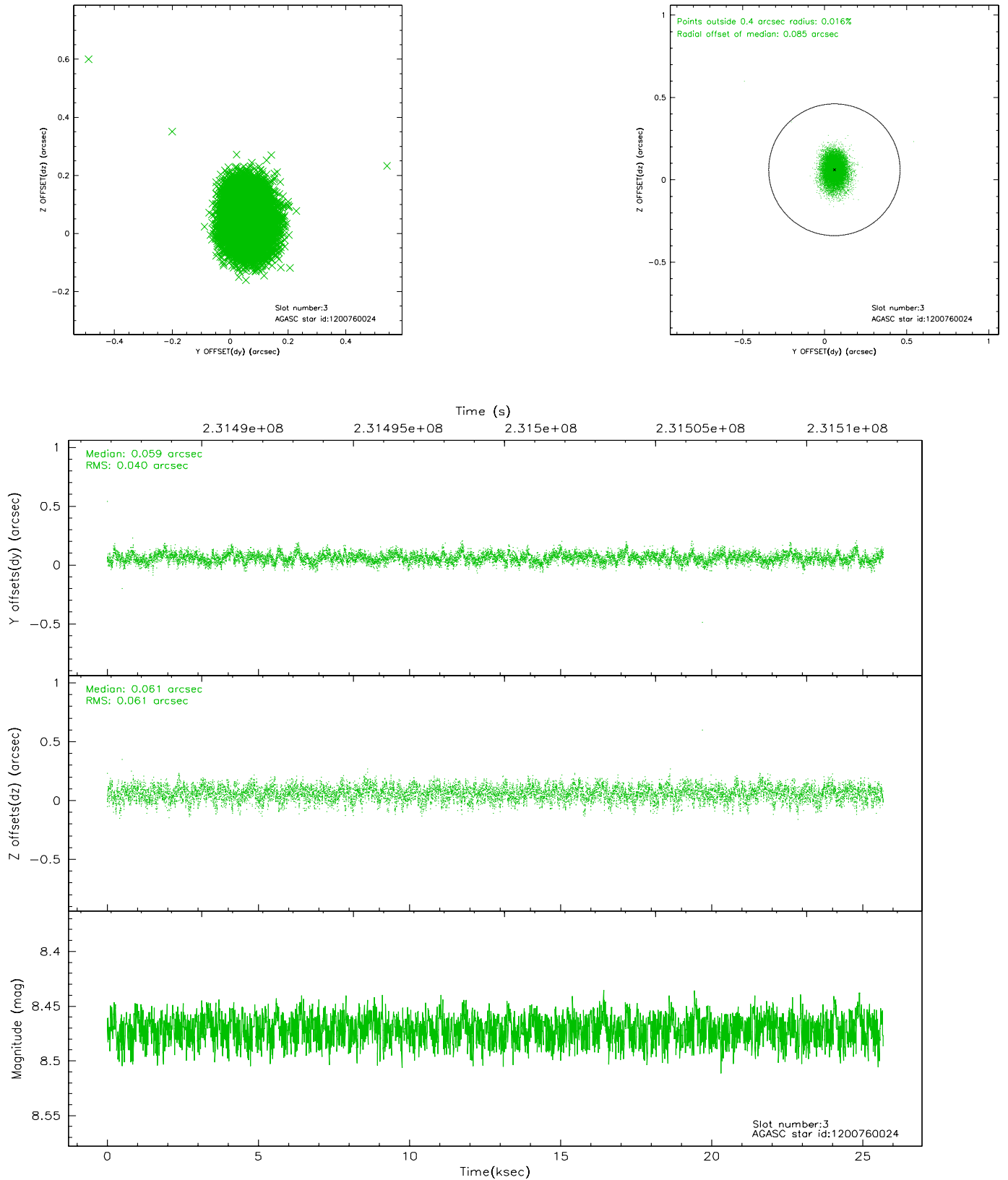
### Slot Statistics

slot	status	id	mag	n_pts	med_dy	med_dz	dr1	dr2	ra	dec	mean_y	mean_z
0	FID	HRC-S-1	7.03	6262	0.128	-0.159	0.027	0.044	0.000000	0.000000	-1161.52	-457.50
1	FID	HRC-S-2	7.02	6264	0.161	-0.113	0.005	0.009	0.000000	0.000000	1238.01	-450.17
2	FID	HRC-S-3	7.04	6264	0.101	-0.030	0.029	0.047	0.000000	0.000000	-1164.07	572.08
3	GUIDE	1200760024	8.47	12524	0.059	0.061	0.076	0.126	77.625244	-69.320410	-231.50	-2140.41
4	GUIDE	1201407648	9.15	12525	-0.009	-0.031	0.097	0.161	78.636737	-70.585025	1446.02	2271.57
5	GUIDE	1200888464	9.48	12521	-0.069	0.046	0.115	0.189	78.430687	-69.005633	-1732.32	-2449.53
6	GUIDE	1201280072	8.54	12520	0.076	0.031	0.063	0.103	77.357470	-69.714246	866.89	-1183.44
7	GUIDE	1201411776	8.86	12525	-0.056	-0.103	0.108	0.167	79.010603	-70.456328	808.93	2169.37

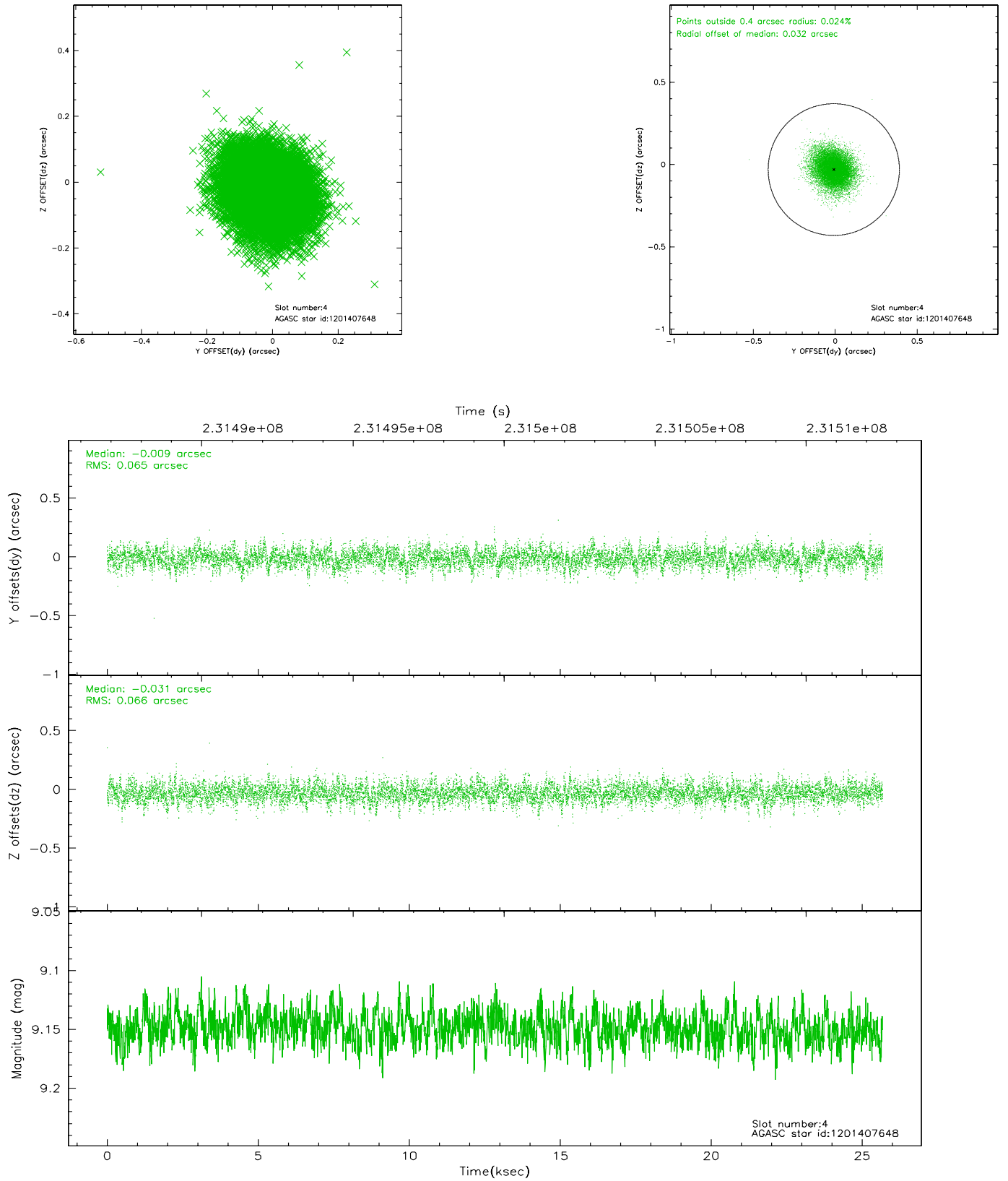


## 2.4 Star Slots

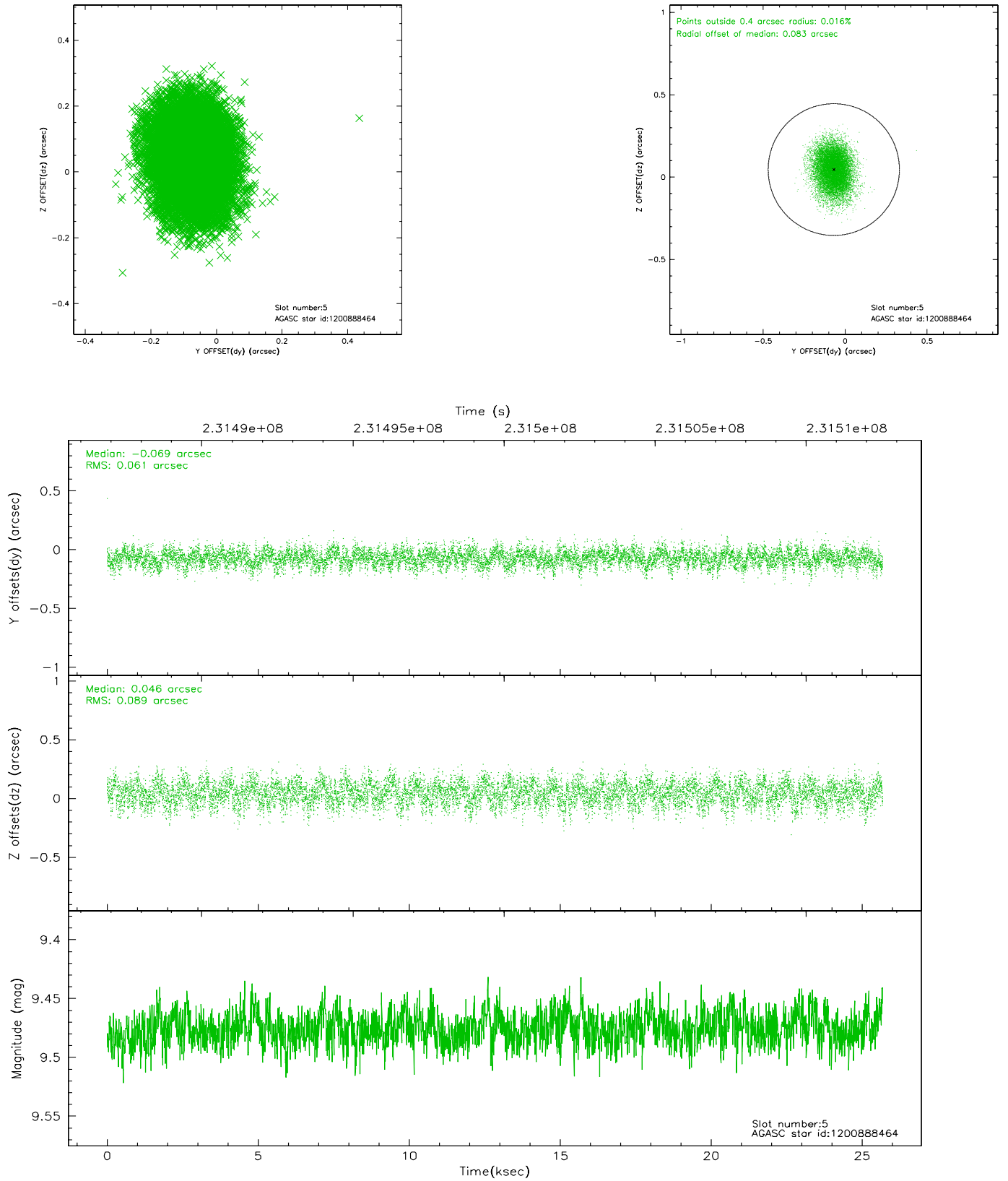
### 2.4.1 Slot 3



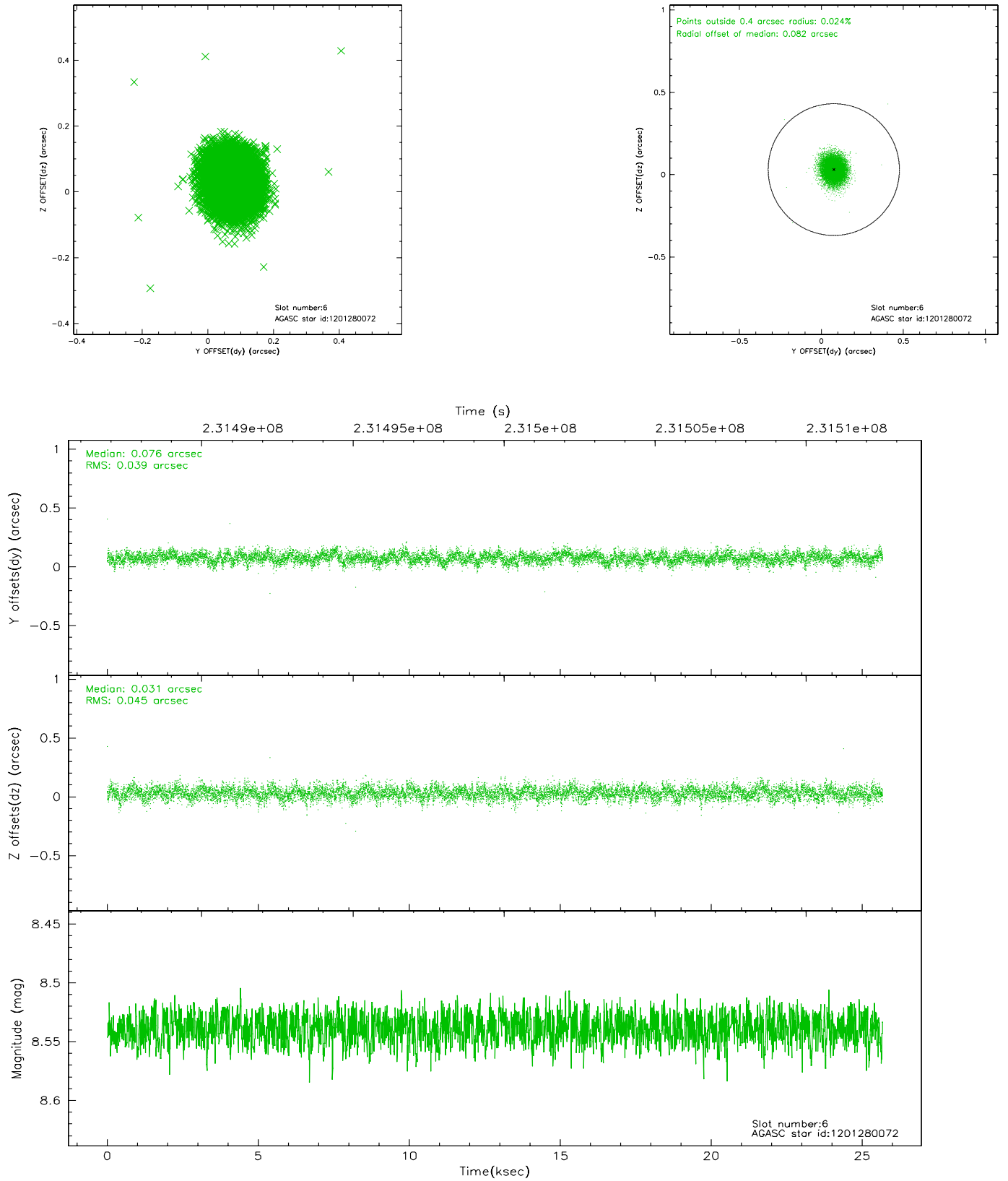
## 2.4.2 Slot 4



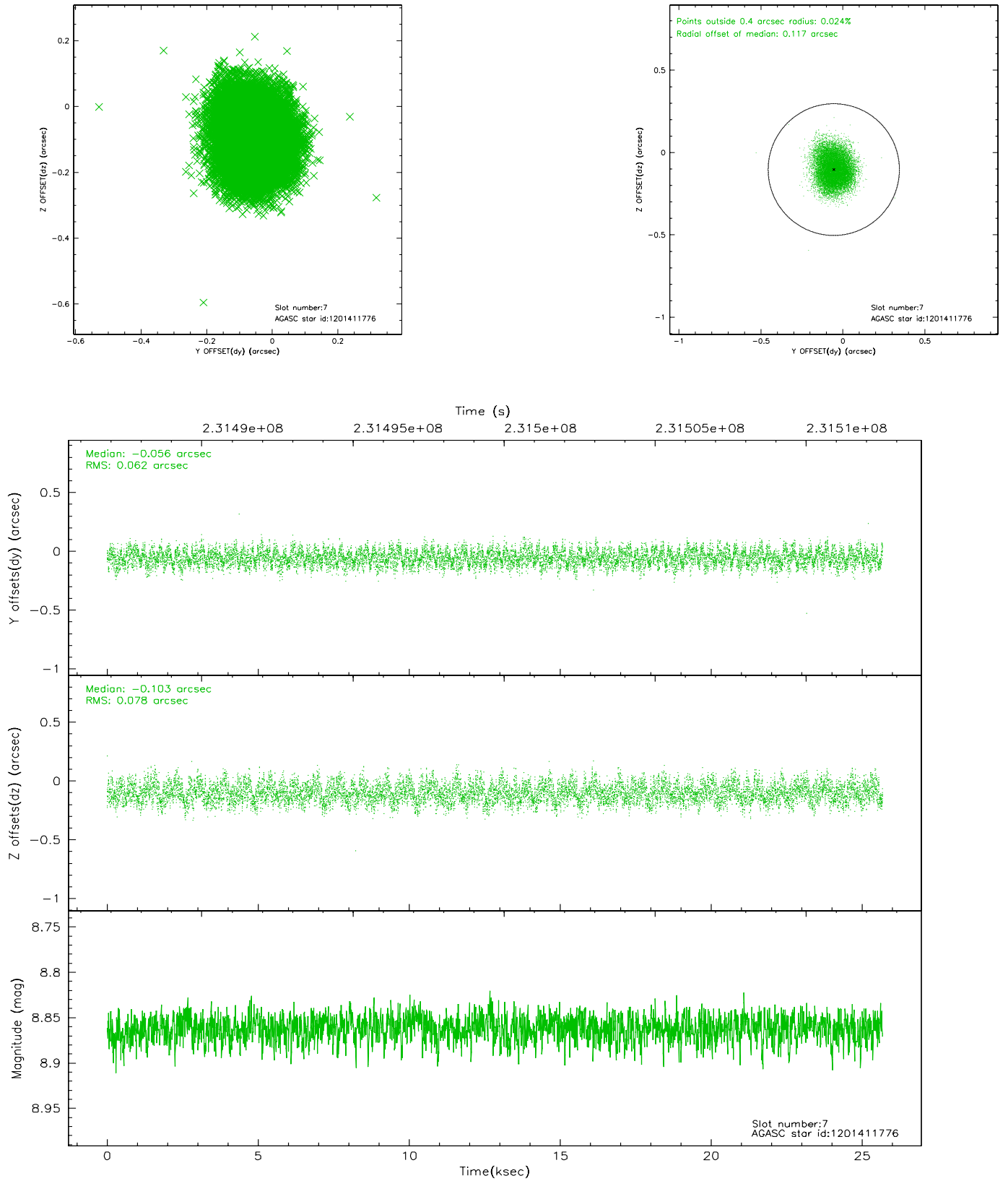
### 2.4.3 Slot 5



## 2.4.4 Slot 6

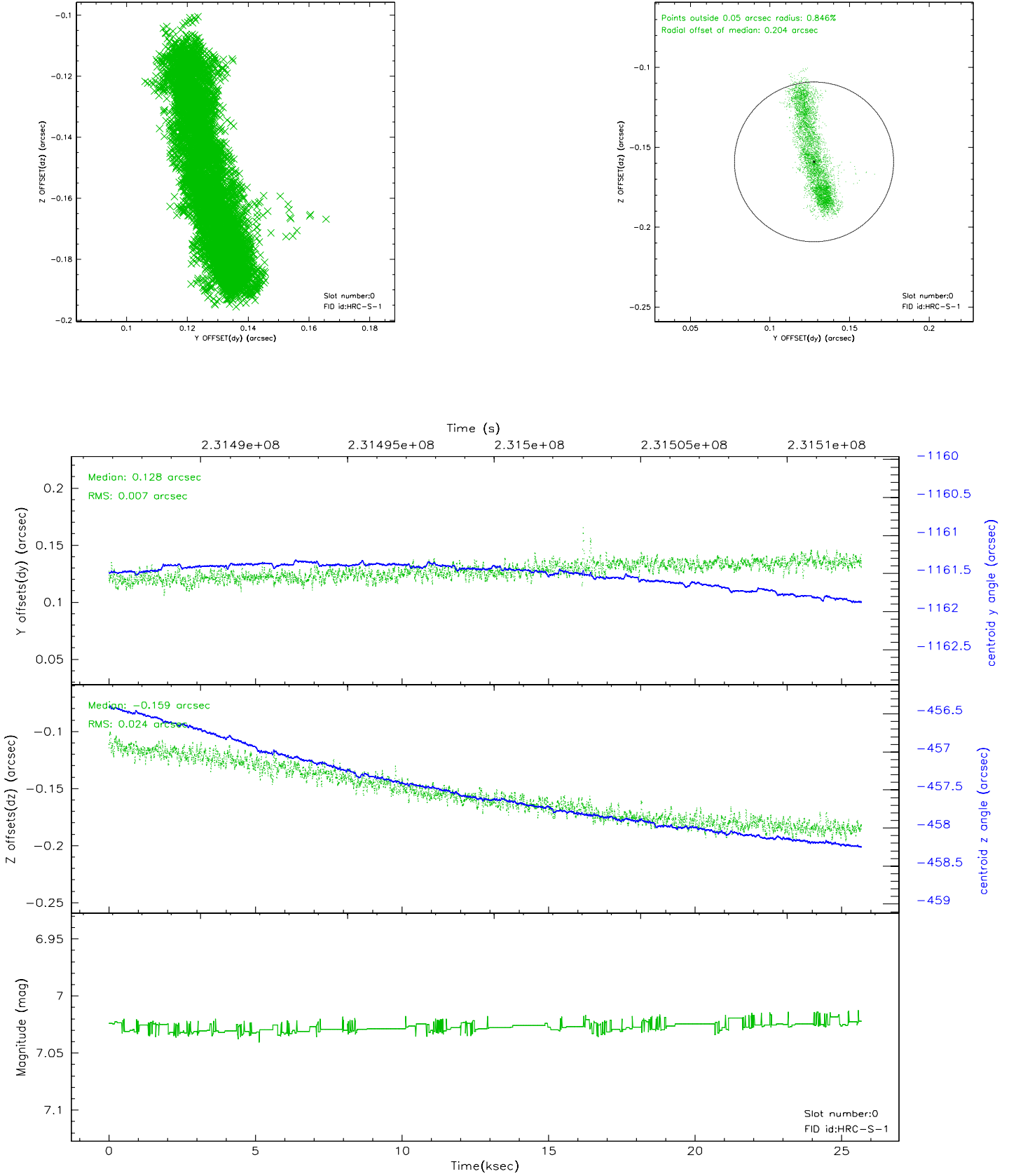


## 2.4.5 Slot 7

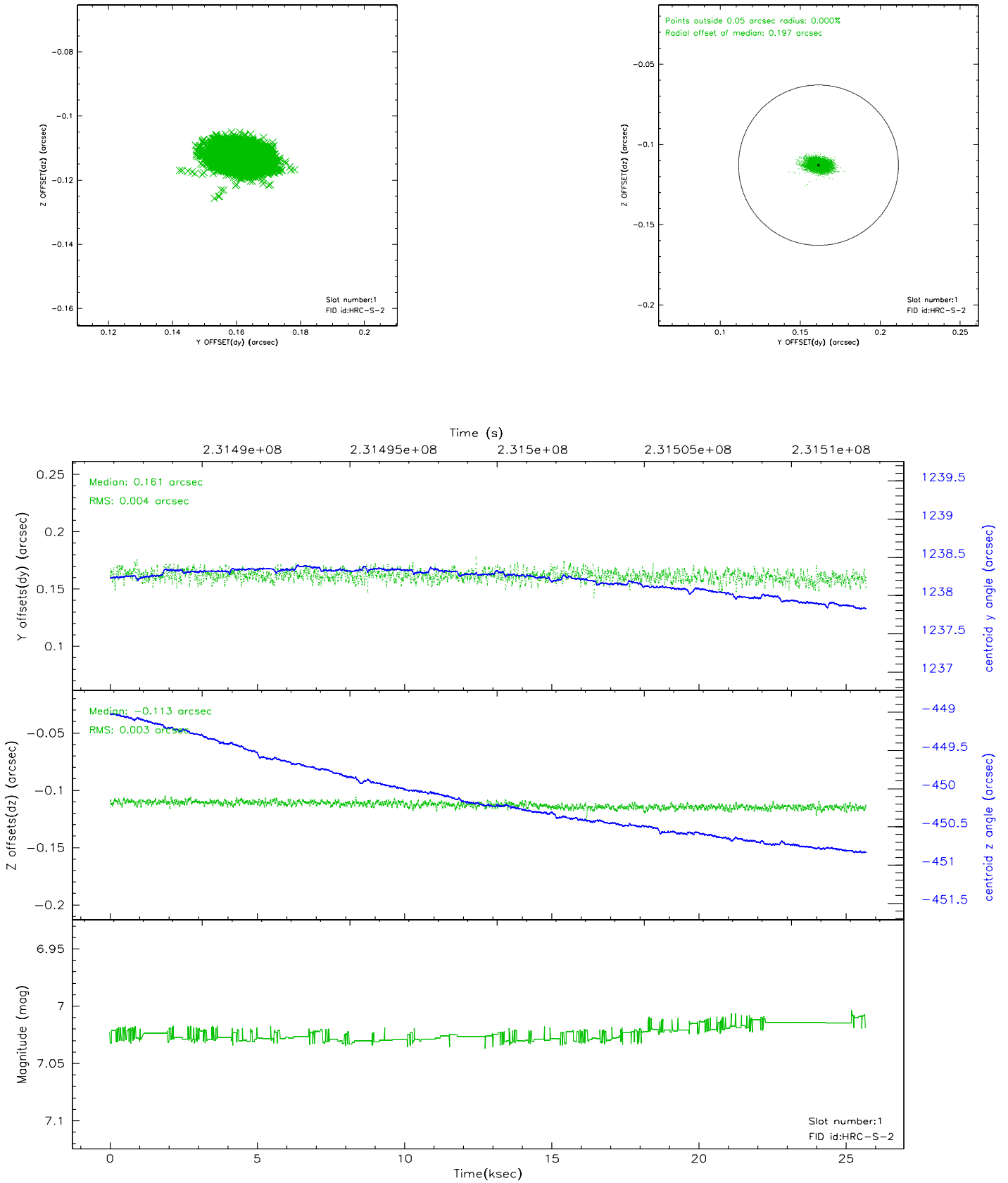


## 2.5 FID Slots

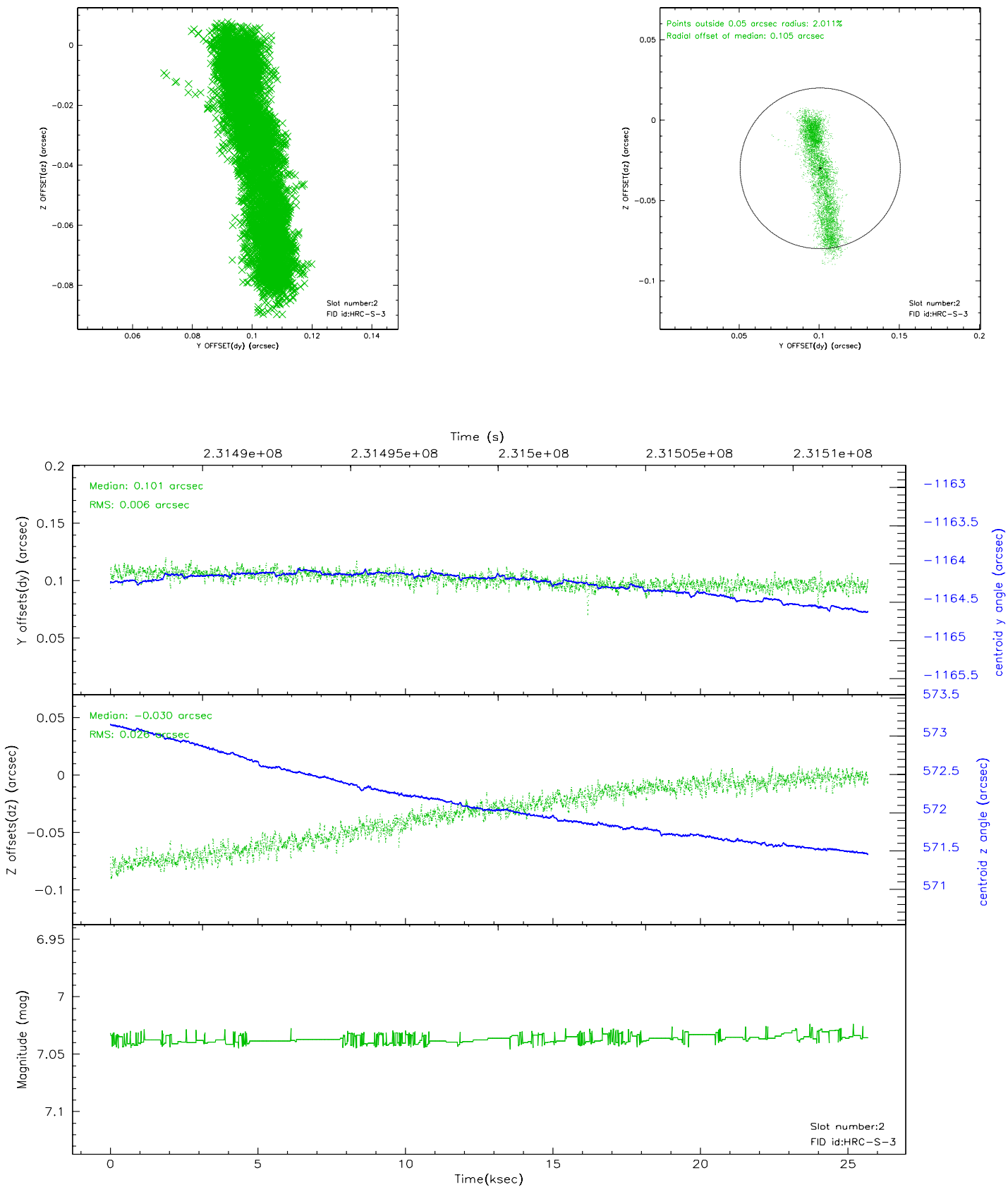
### 2.5.1 Slot 0



## 2.5.2 Slot 1



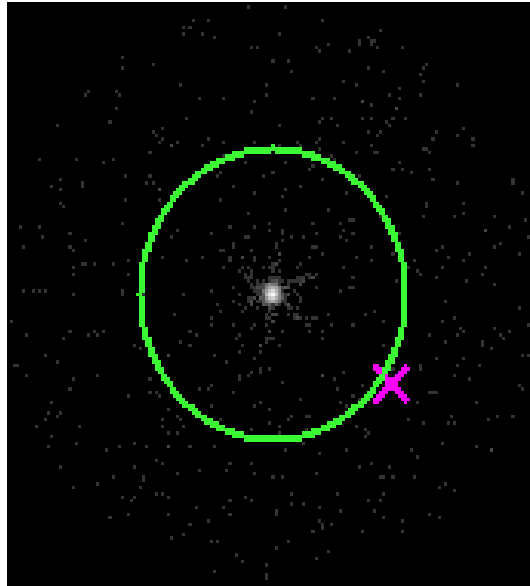
### 2.5.3 Slot 2



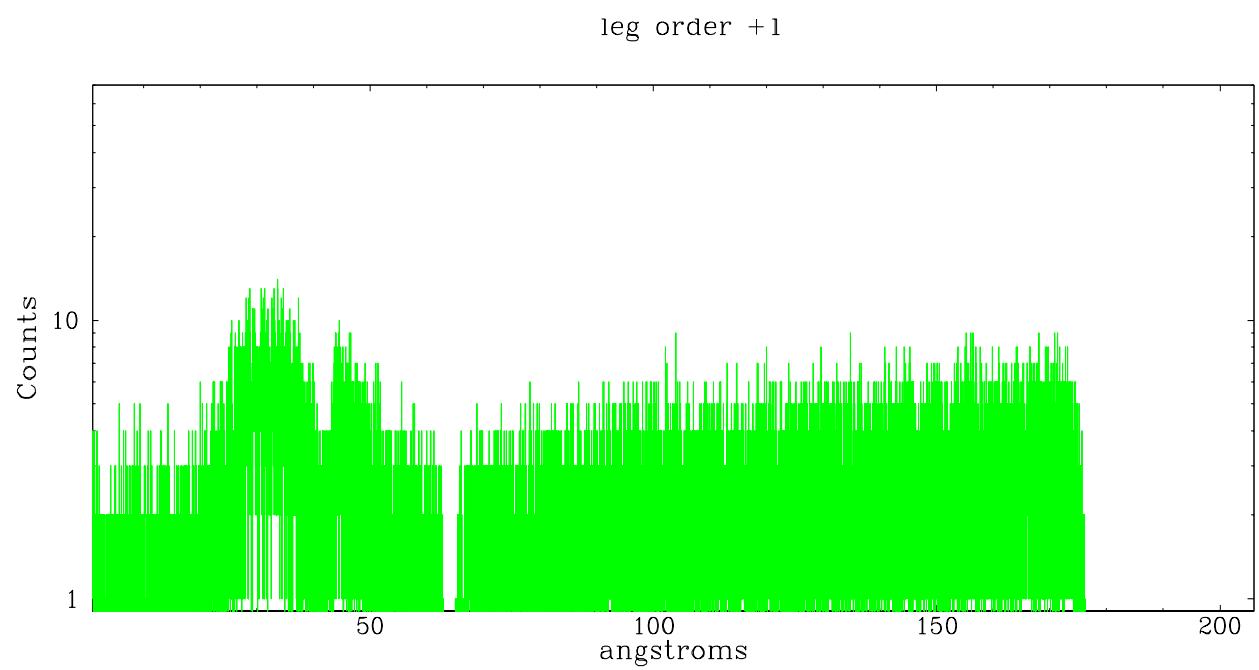
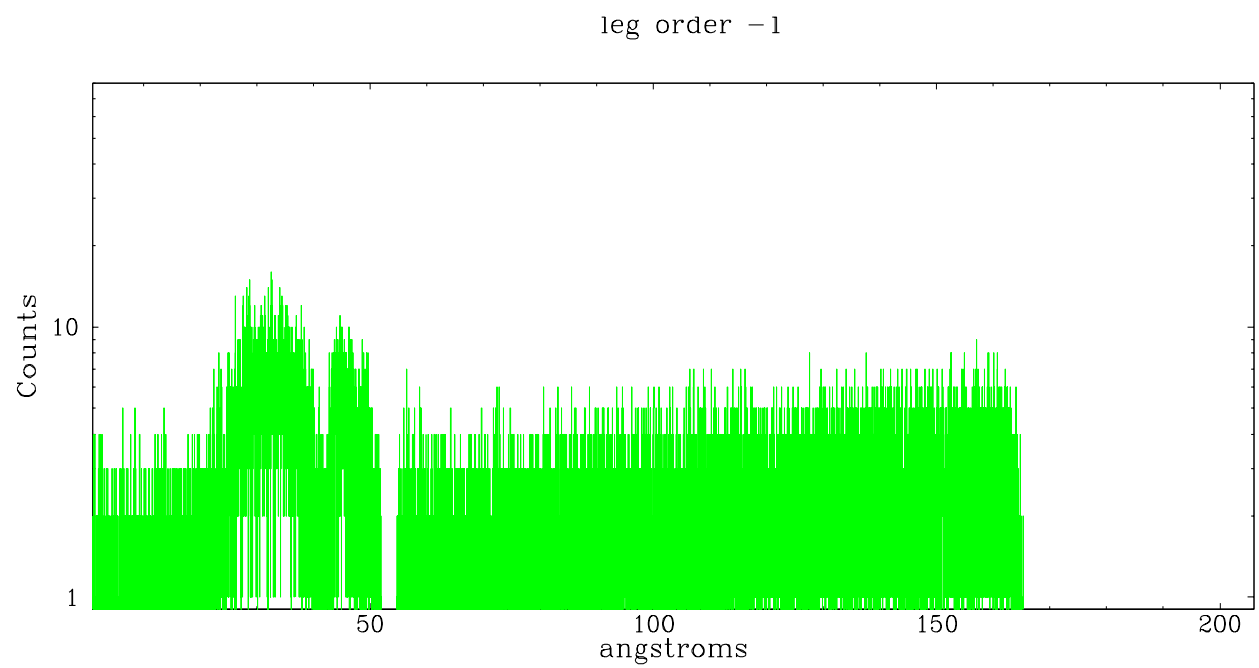


## 3 Gratings

### 3.1 LETG Arm



LETG Zero Order



## A Summary

### A.1 Status

V&V Scientist	Beth Sundheim
V&V Date (YYYY-MM-DD)	2006.03.02
V&V Edition	1
V&V Disposition and Status	OK
V&V Charge Time	25.67958

### A.2 Comments