

# V&V Reference Report

## L2 ASCDS Version : 7.6.7

Observation 5375 - L2 Version 002  
Chandra X-Ray Center

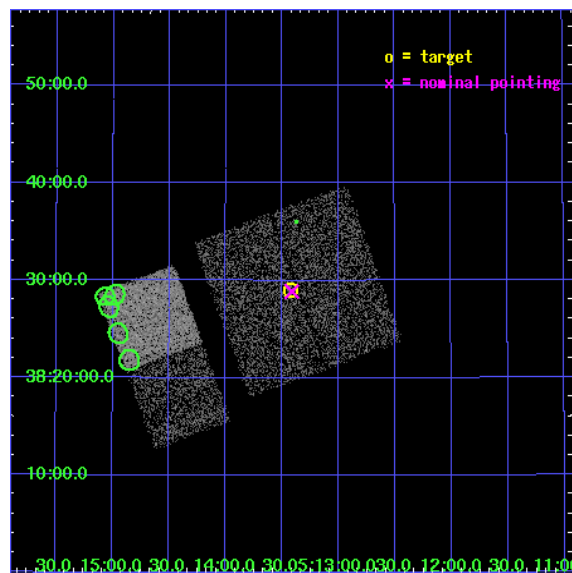
L2 Processing Date: Feb 16 2006

## Contents

<b>1</b>	<b>Front</b>	<b>2</b>
<b>2</b>	<b>OBI</b>	<b>3</b>
2.1	OBI . . . . .	3
2.1.1	Images . . . . .	3
2.1.2	Bias . . . . .	3
2.1.3	Parameters . . . . .	4
2.1.4	Events . . . . .	4
2.2	Compared Parameters . . . . .	5
2.3	Aspect . . . . .	6
2.4	Star Slots . . . . .	9
2.4.1	Slot 3 . . . . .	9
2.4.2	Slot 4 . . . . .	10
2.4.3	Slot 5 . . . . .	11
2.4.4	Slot 6 . . . . .	12
2.4.5	Slot 7 . . . . .	13
2.5	FID Slots . . . . .	14
2.5.1	Slot 0 . . . . .	14
2.5.2	Slot 1 . . . . .	15
2.5.3	Slot 2 . . . . .	16
<b>3</b>	<b>Point Sources</b>	<b>17</b>
<b>A</b>	<b>Summary</b>	<b>18</b>
A.1	Status . . . . .	18
A.2	Comments . . . . .	18

# 1 Front

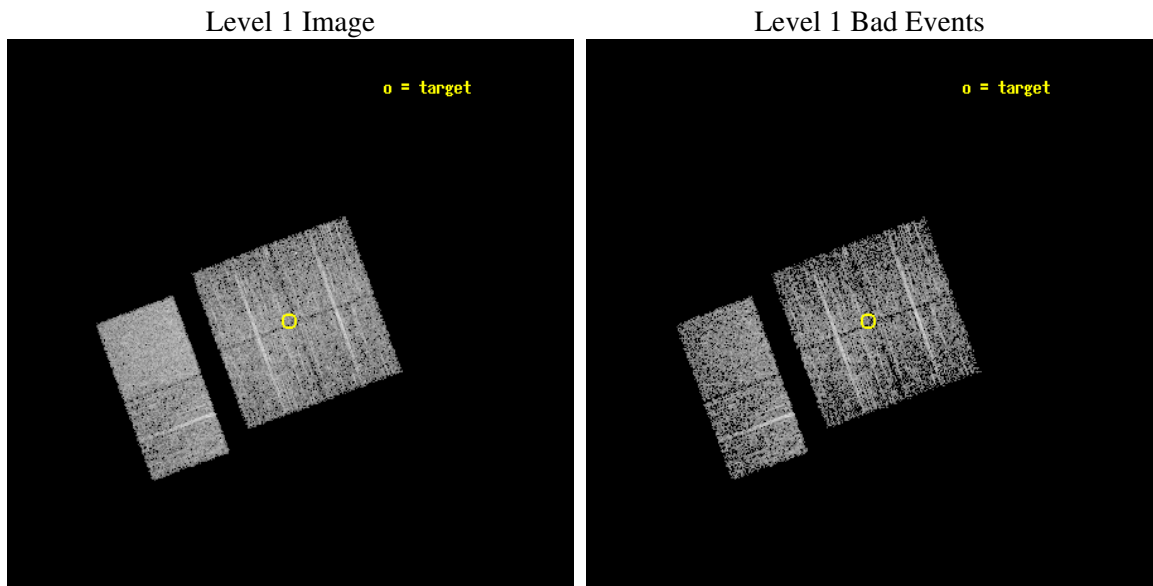
seq_num	200310
obs_id	5375
title	Search for beta Pic analogs
observer	Prof. Gordon Garmire
object	mu Aur
dtcycle	0
cycle	P
ra_targ	78.357083
dec_targ	38.484722
ra_nom	78.353214591417
dec_nom	38.481409770066
roll_nom	249.86012685447
revision	2
ontime	3132.7999883294
livetime	3093.1305885315
ontime0	3132.7999883294
ontime1	3132.7999883294
ontime2	3132.7999883294
ontime3	3132.7999883294
ontime6	3132.7999883294
ontime7	3132.7999883294
l2events	22720



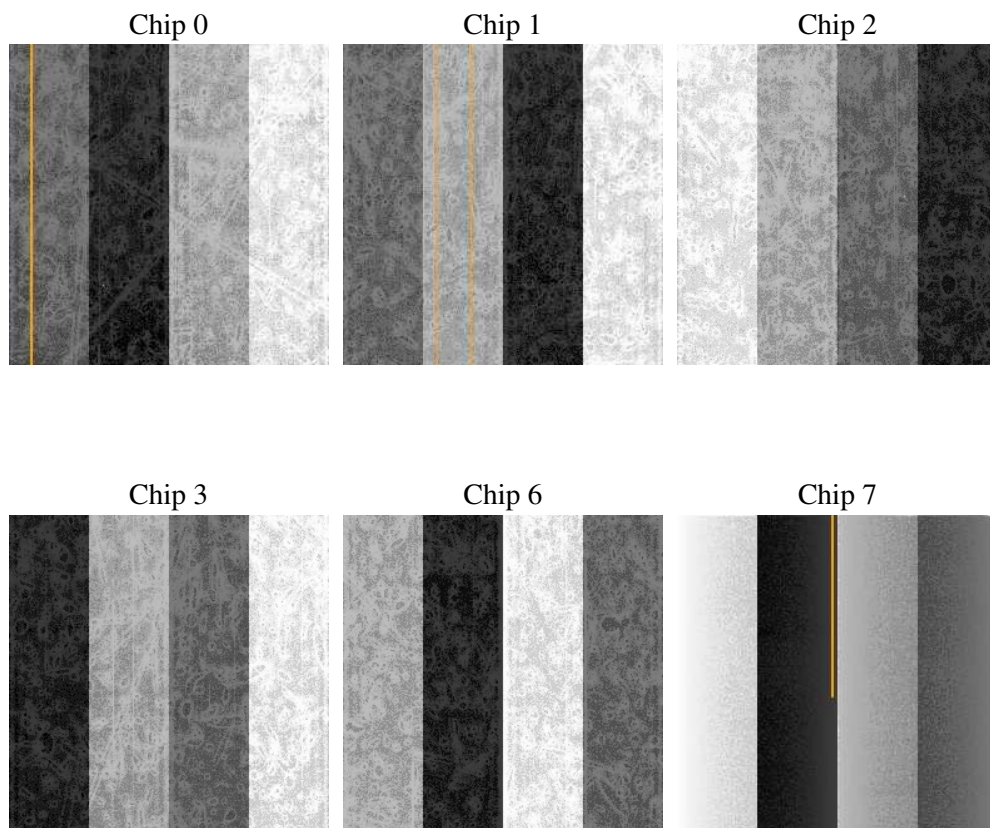
## 2 OBI

### 2.1 OBI

#### 2.1.1 Images



#### 2.1.2 Bias



### 2.1.3 Parameters

obi_num	0
ascdsver	7.6.7
caldsver	3.2.1
date	2006-02-16T17:09:44
revision	2

sched_exp_time	3000.000000
ontime	3137.2934216559
ontime0	3137.2934216559
ontime1	3137.2934216559
ontime2	3137.2934216559
ontime3	3137.2934216559
ontime6	3137.2934216559
ontime7	3137.2934216559
l1events	134527

### 2.1.4 Events

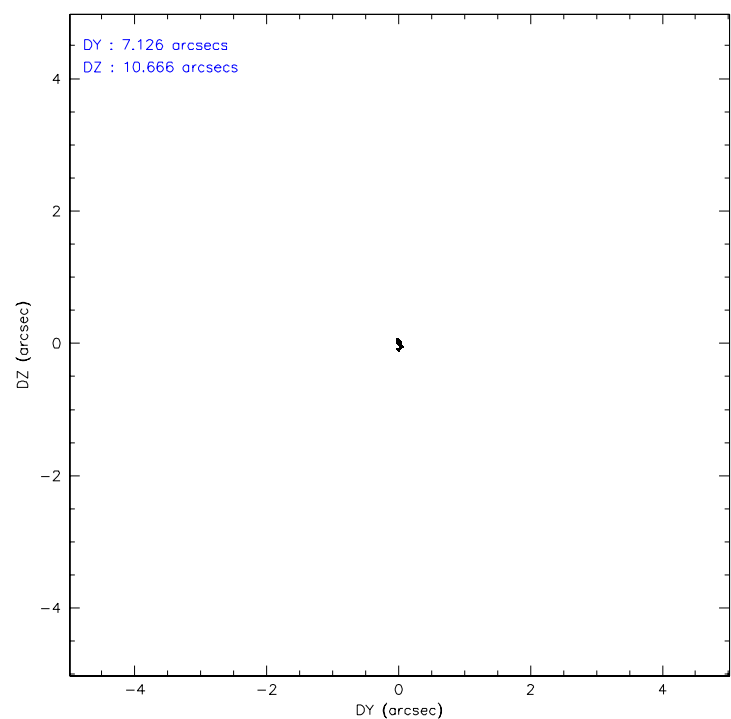
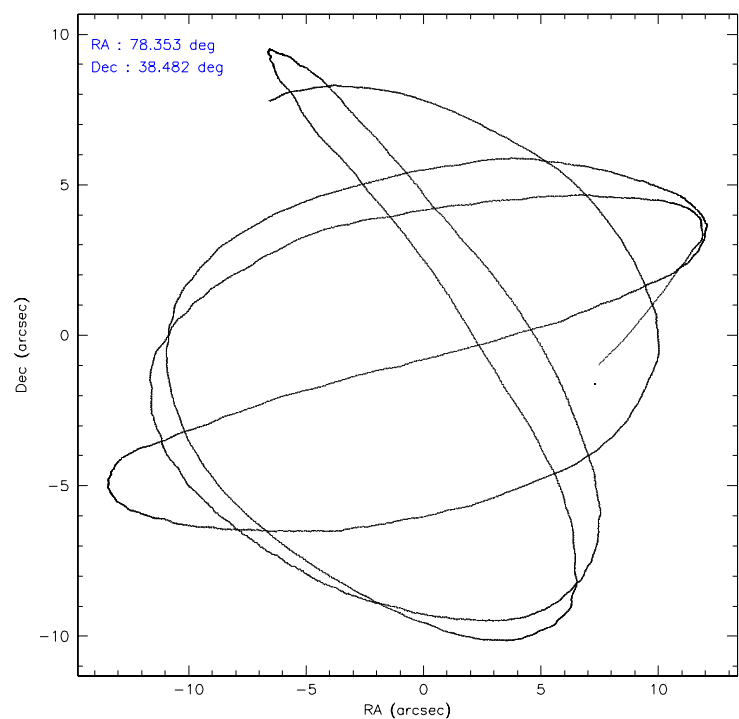
	ccd 0	ccd 1	ccd 2	ccd 3	ccd 6	ccd 7
level 1 events	19357	20250	21378	20845	22197	30500
rejected events	16653	17372	18744	18237	19563	19199
rejected %	86%	85%	87%	87%	88%	62%

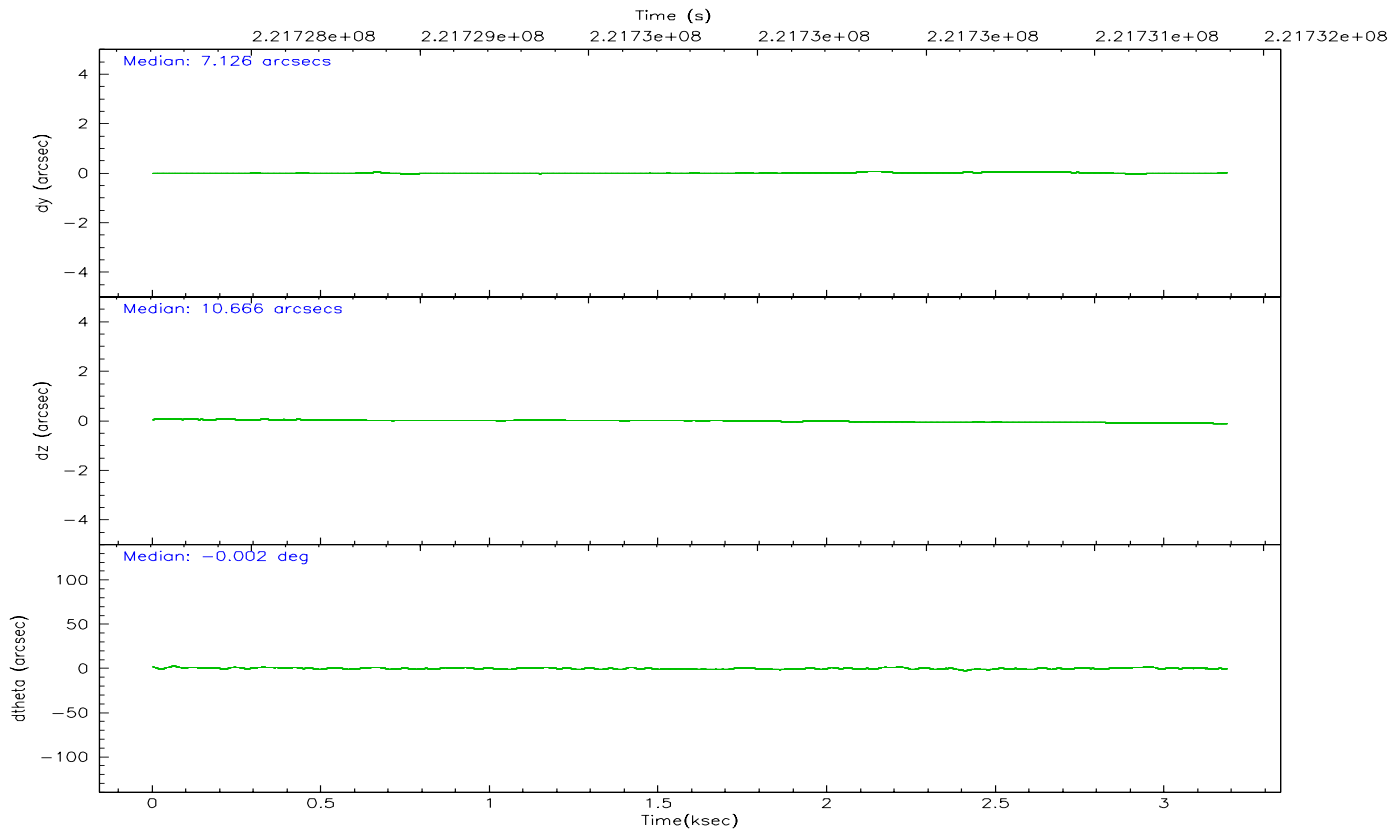
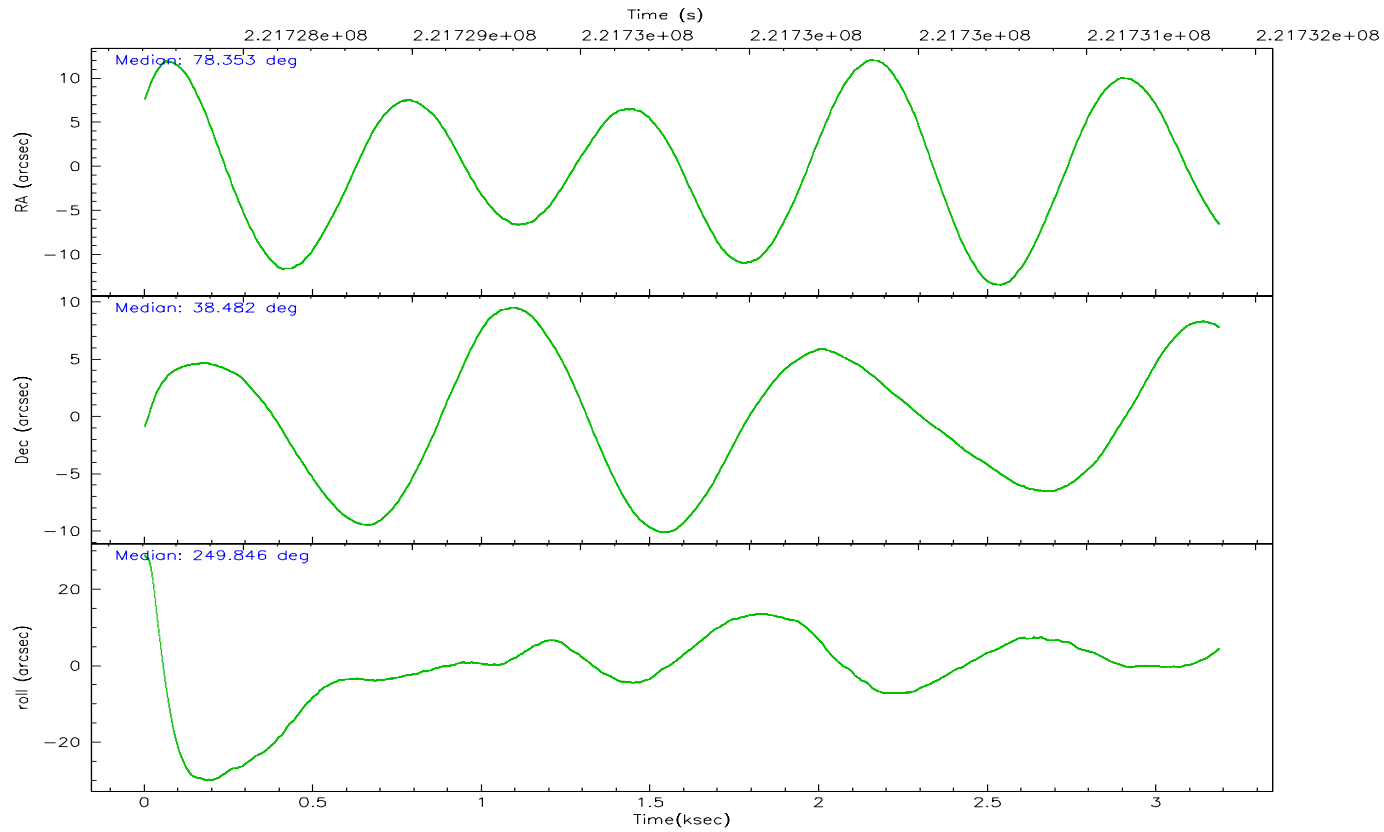
	ccd 0	ccd 1	ccd 2	ccd 3	ccd 6	ccd 7
grade 0 events	1179	1128	1159	1143	1099	636
	6%	5%	5%	5%	4%	2%
grade 1 events	11	8	16	11	6	27
	0%	0%	0%	0%	0%	0%
grade 2 events	541	652	491	507	491	2832
	2%	3%	2%	2%	2%	9%
grade 3 events	274	276	270	276	237	583
	1%	1%	1%	1%	1%	1%
grade 4 events	252	274	274	246	263	527
	1%	1%	1%	1%	1%	1%
grade 5 events	851	912	852	1009	1064	2004
	4%	4%	3%	4%	4%	6%
grade 6 events	462	557	448	439	551	6737
	2%	2%	2%	2%	2%	22%
grade 7 events	15787	16443	17868	17214	18486	17154
	81%	81%	83%	82%	83%	56%

## 2.2 Compared Parameters

Parameter	Planned	Actual	Parameter	Planned	Actual
Instrument	ACIS	ACIS	Obspar format version number	6	6
Detector	ACIS-012367	ACIS-012367	Obspar file type	PREDICTED	ACTUAL
Grating	NONE	NONE	Obspar update status	NONE	UPDATED
Data mode	FAINT	FAINT	On-chip summing requested	N	N
Observation mode	POINTING	POINTING	Subarray requested	NONE	NONE
Pointing RA	78.346902	78.35321459141659	Alternating exposures requested	N	N
Pointing Dec	38.508304	38.48140977006564	Primary exposure time	0.000000	3.2
Pointing Roll	249.655105	249.8601268544745			
SIM focus pos (mm)	-0.782348	-0.7809083437167272			
SIM defocus (mm)	0	0.001439871863259334			
SIM translation stage pos (mm)	-233.592463	-233.5874344608287			
SIM translation stage offset (mm)	0	-0.005018542100998502			
Observation start time	221728395.184000	221727348.99817			
Observation start date	2005-01-10T07:12:11	2005-01-10T06:55:48			
Observation end time	221731395.184000	221732498.59841			
Observation end date	2005-01-10T08:02:11	2005-01-10T08:21:38			
Read mode	TIMED	TIMED			

## 2.3 Aspect





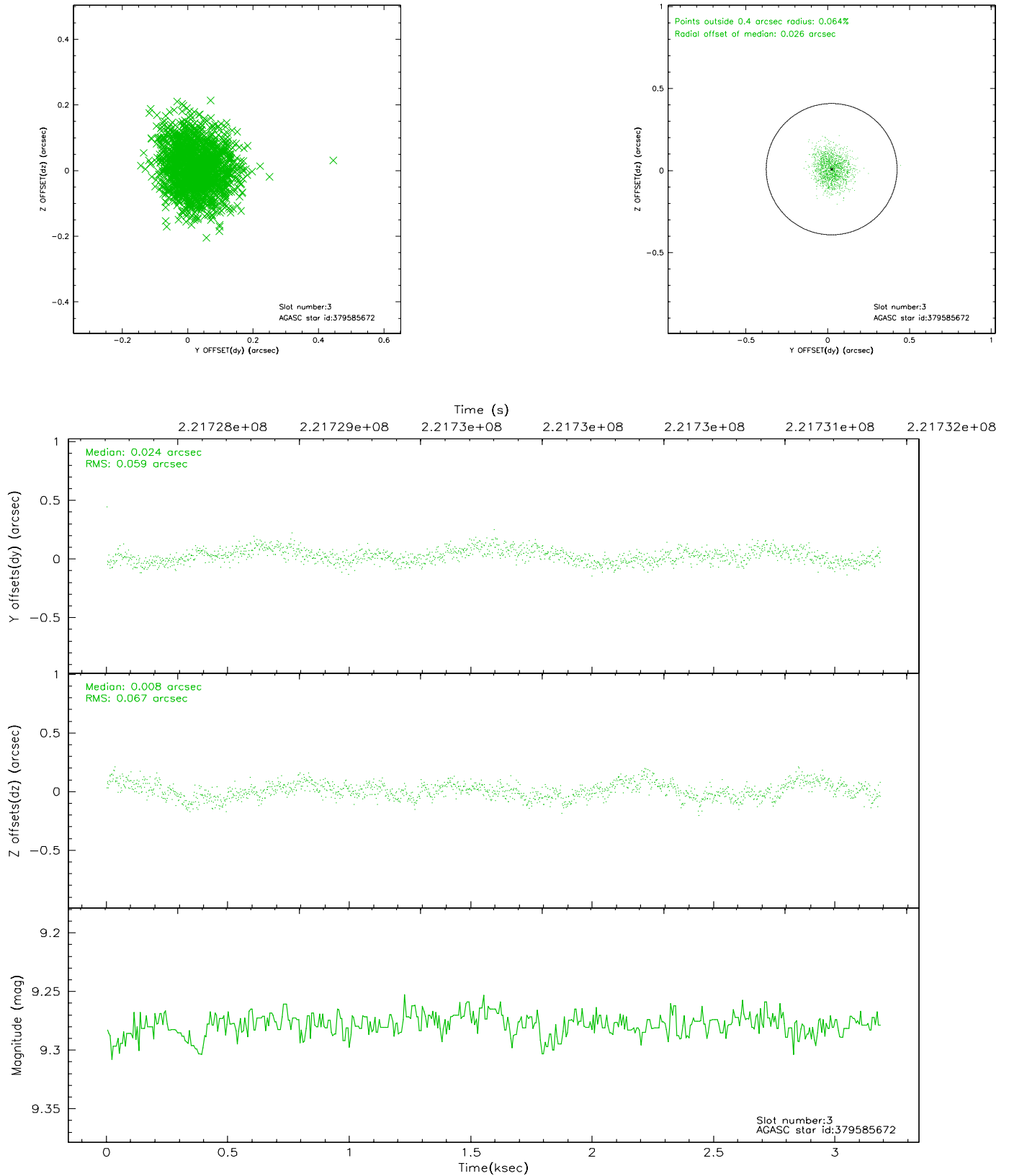
### Slot Statistics

slot	status	id	mag	n_pts	med_dy	med_dz	dr1	dr2	ra	dec	mean_y	mean_z
0	FID	ACIS-I-2	7.14	778	-0.059	-0.068	0.009	0.016	0.000000	0.000000	-761.68	-840.58
1	FID	ACIS-I-4	7.18	776	0.101	0.058	0.006	0.010	0.000000	0.000000	2151.62	1064.72
2	FID	ACIS-I-5	7.23	778	-0.142	0.079	0.009	0.016	0.000000	0.000000	-1813.03	1064.86
3	GUIDE	379585672	9.28	1554	0.024	0.008	0.096	0.152	78.446049	39.020940	-1825.89	-382.28
4	GUIDE	379595128	9.25	1550	0.001	-0.106	0.097	0.161	78.433075	38.328758	520.95	452.45
5	GUIDE	379596248	9.98	1532	-0.002	-0.021	0.163	0.246	77.581920	38.259519	1584.81	-1718.86
6	GUIDE	379596840	9.47	1552	-0.051	0.100	0.086	0.141	78.612545	38.209933	746.50	1076.63
7	GUIDE	379596528	9.14	1553	0.036	0.015	0.084	0.134	78.638795	38.225565	667.28	1128.14

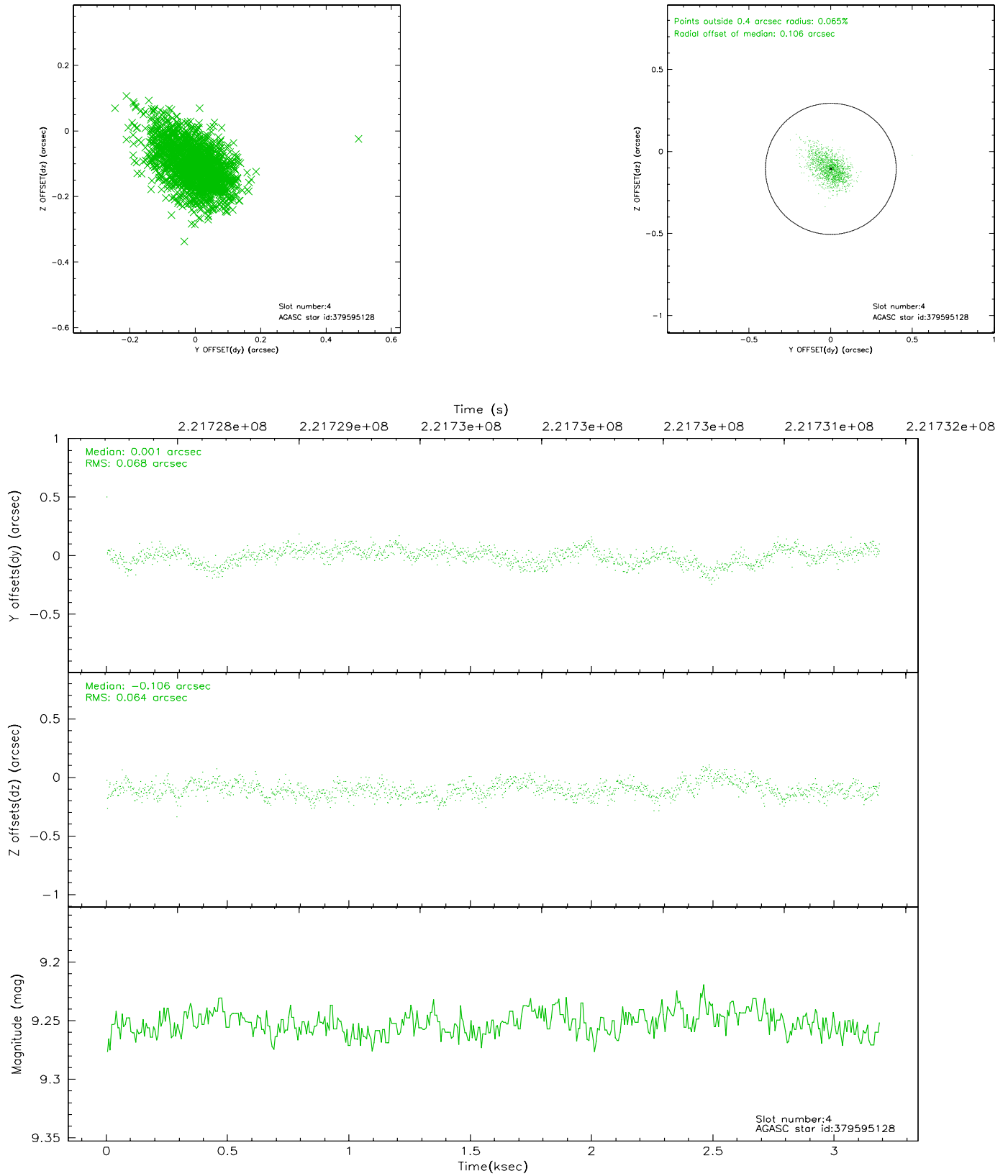


## 2.4 Star Slots

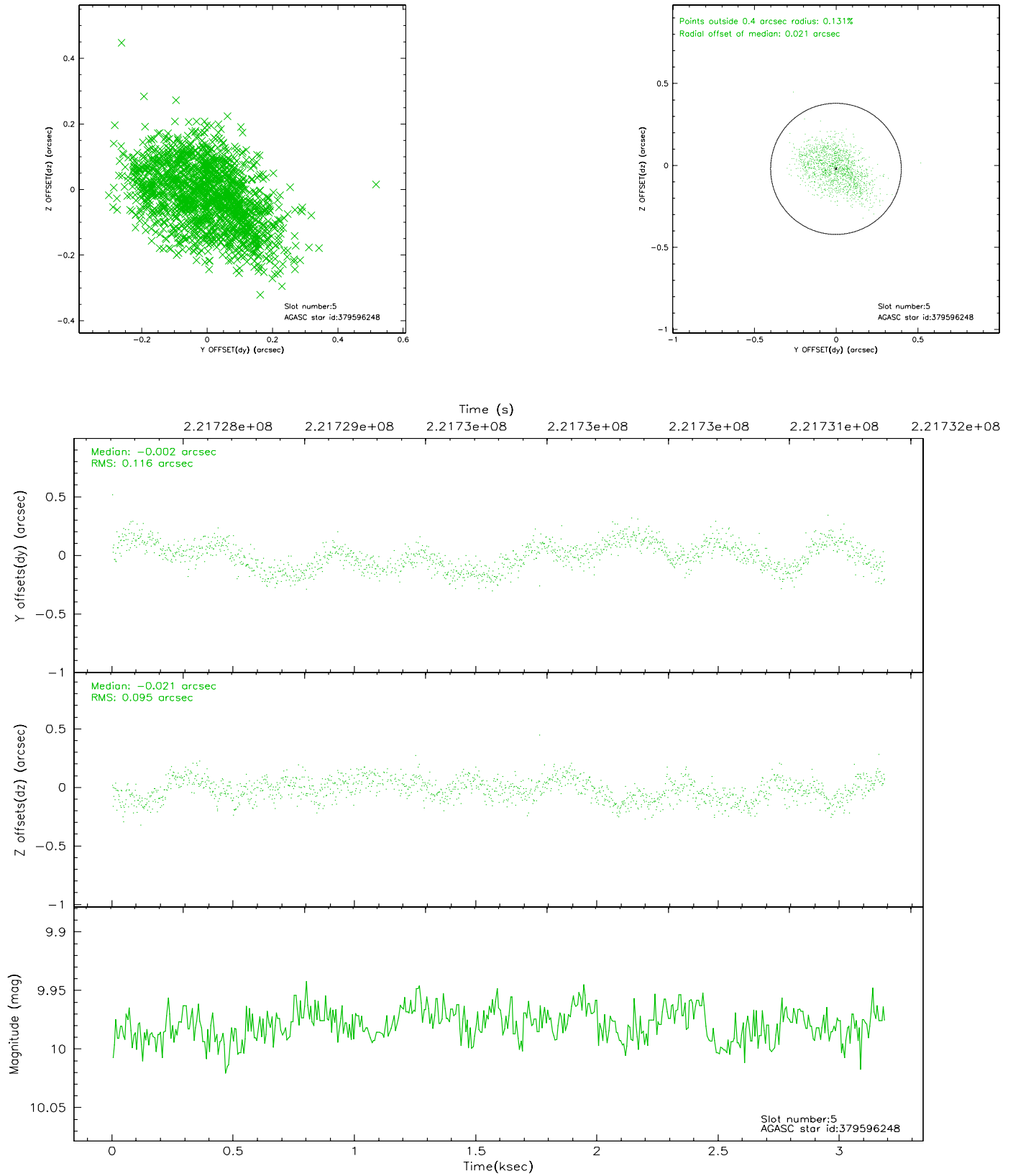
### 2.4.1 Slot 3



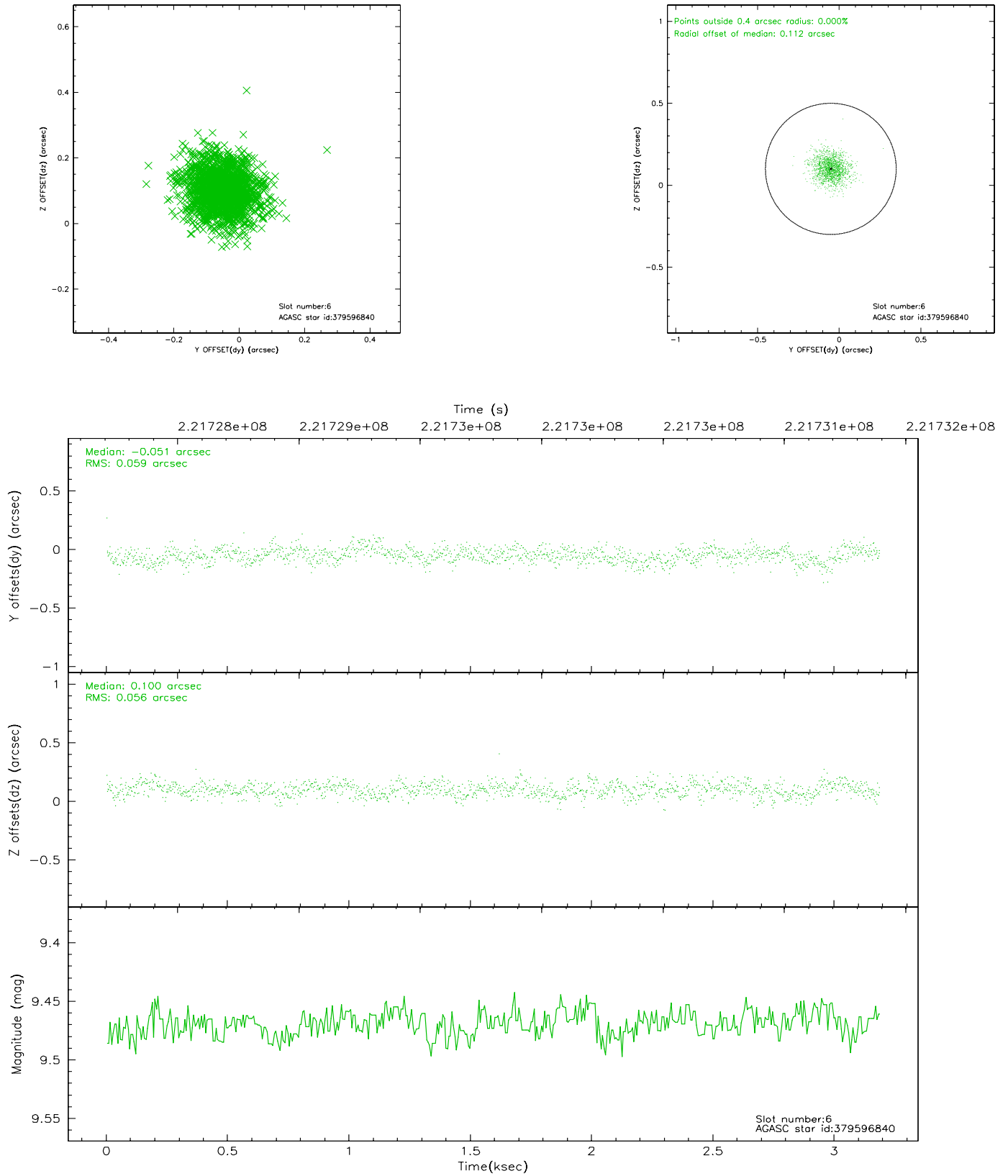
## 2.4.2 Slot 4



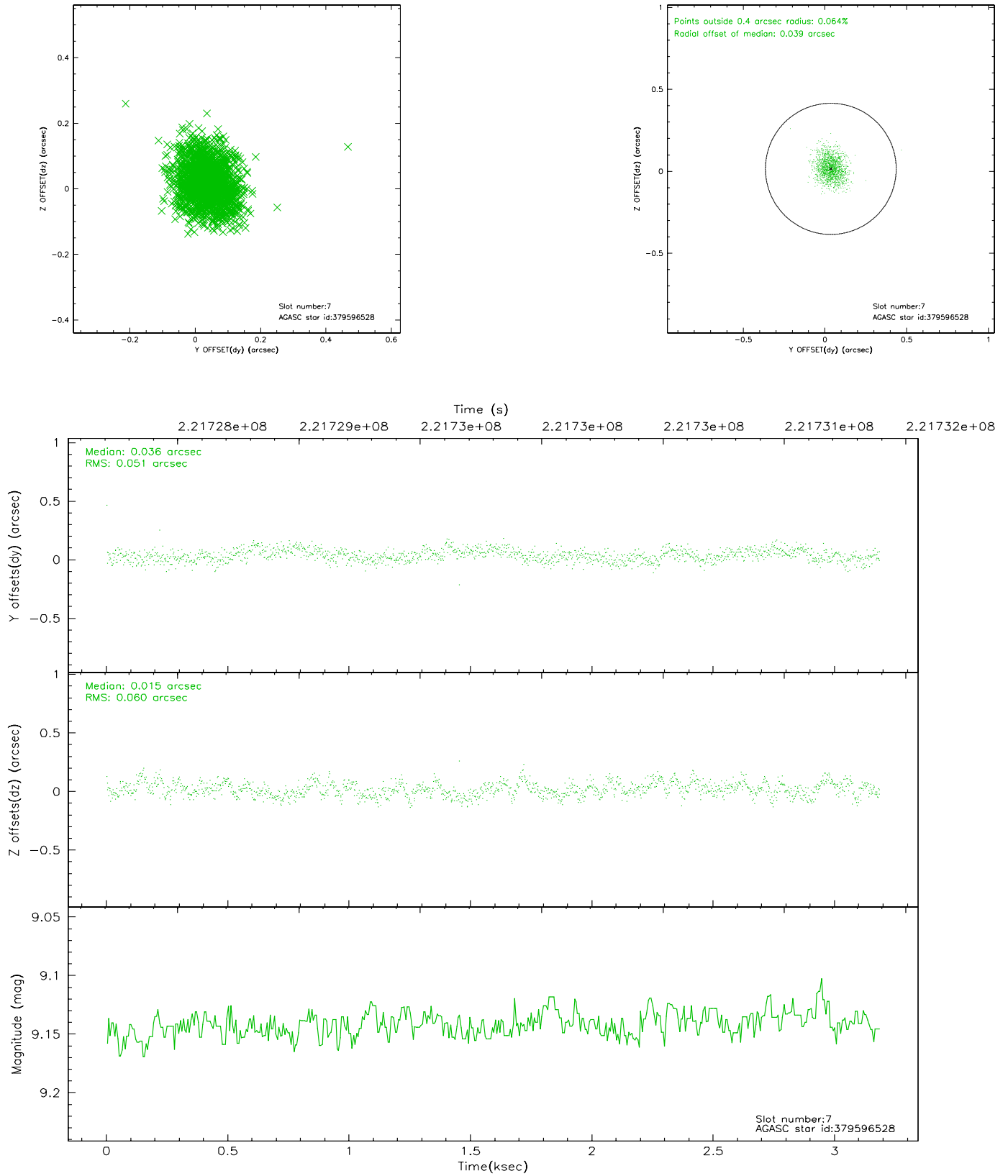
### 2.4.3 Slot 5



## 2.4.4 Slot 6

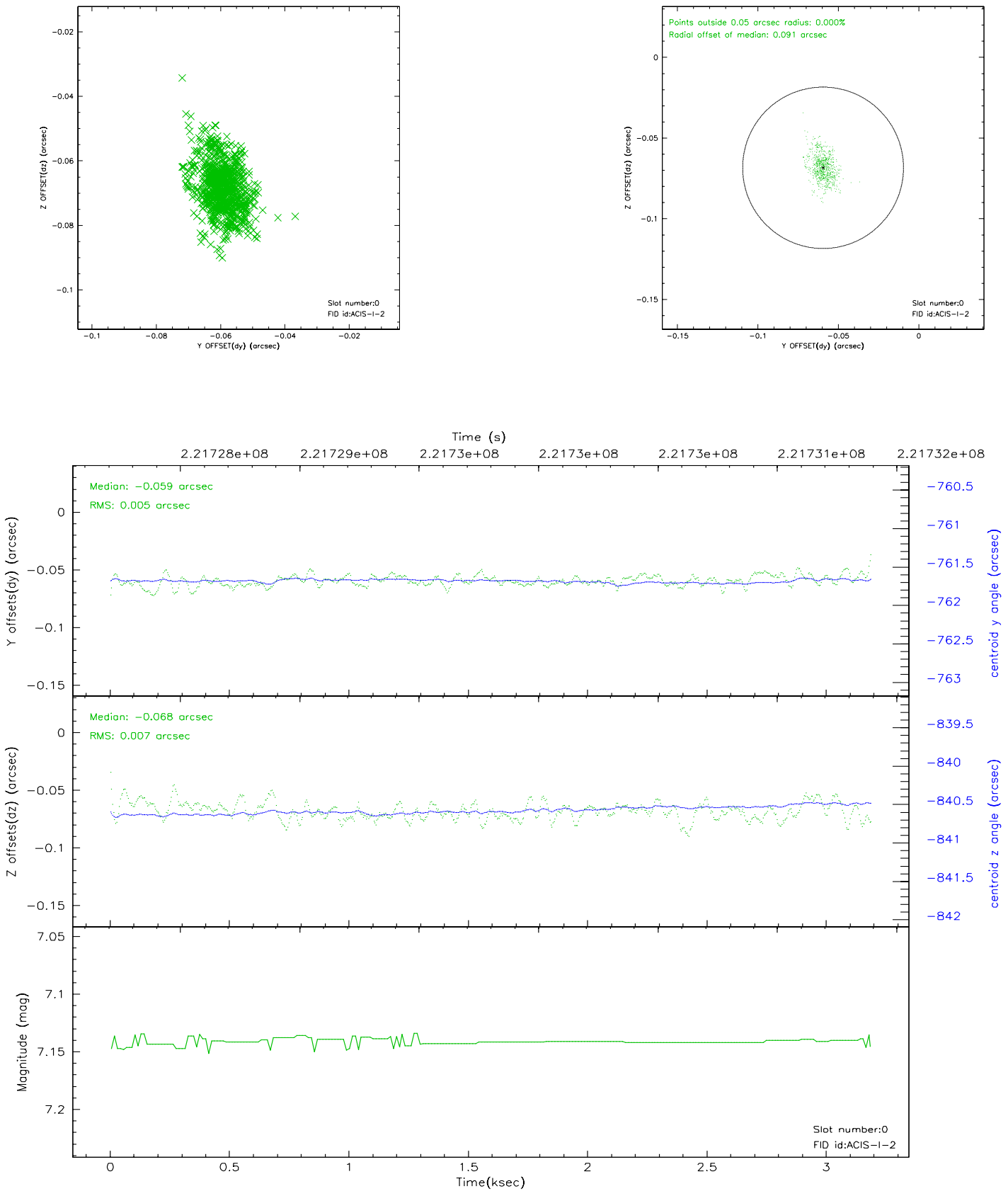


## 2.4.5 Slot 7

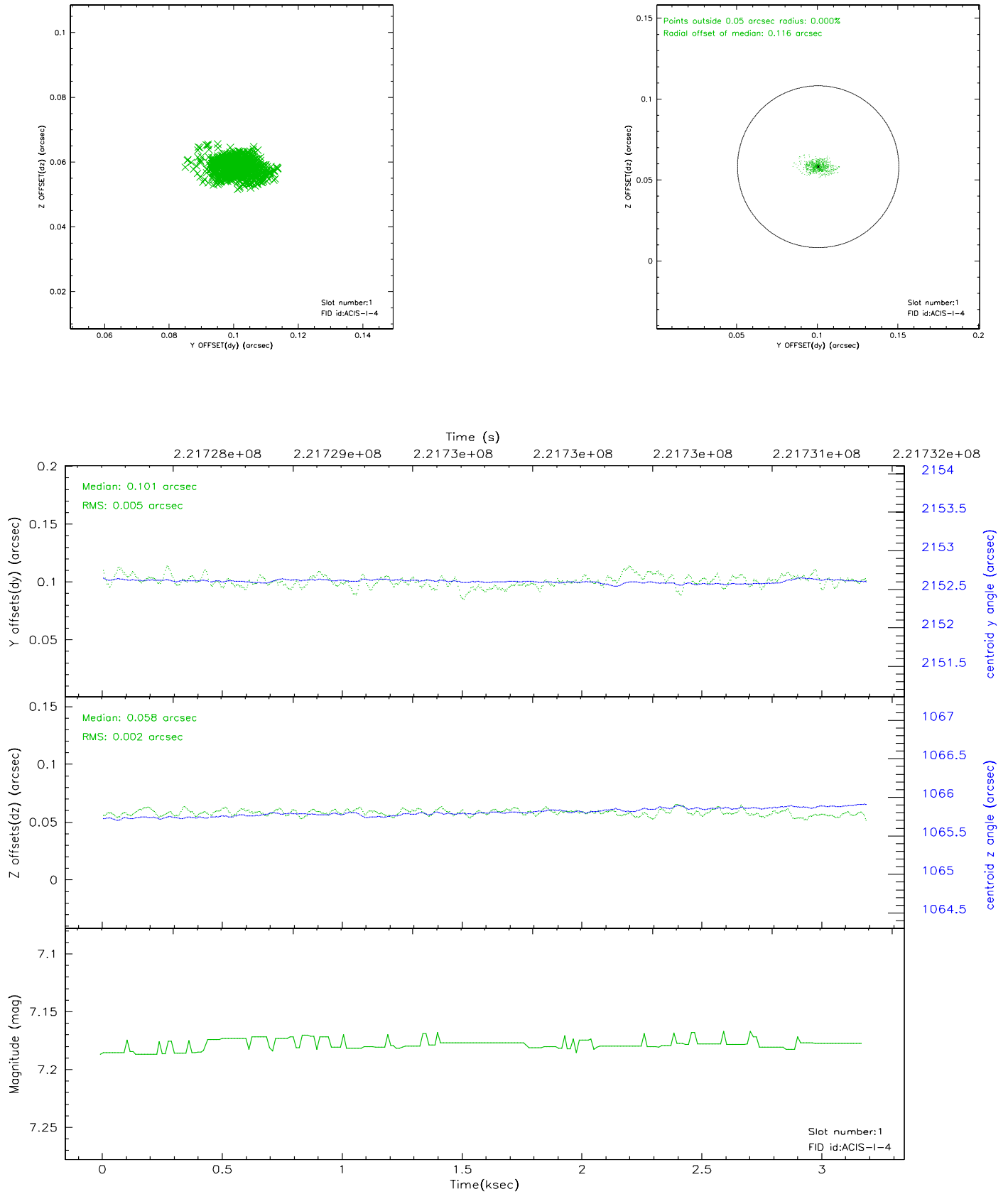


## 2.5 FID Slots

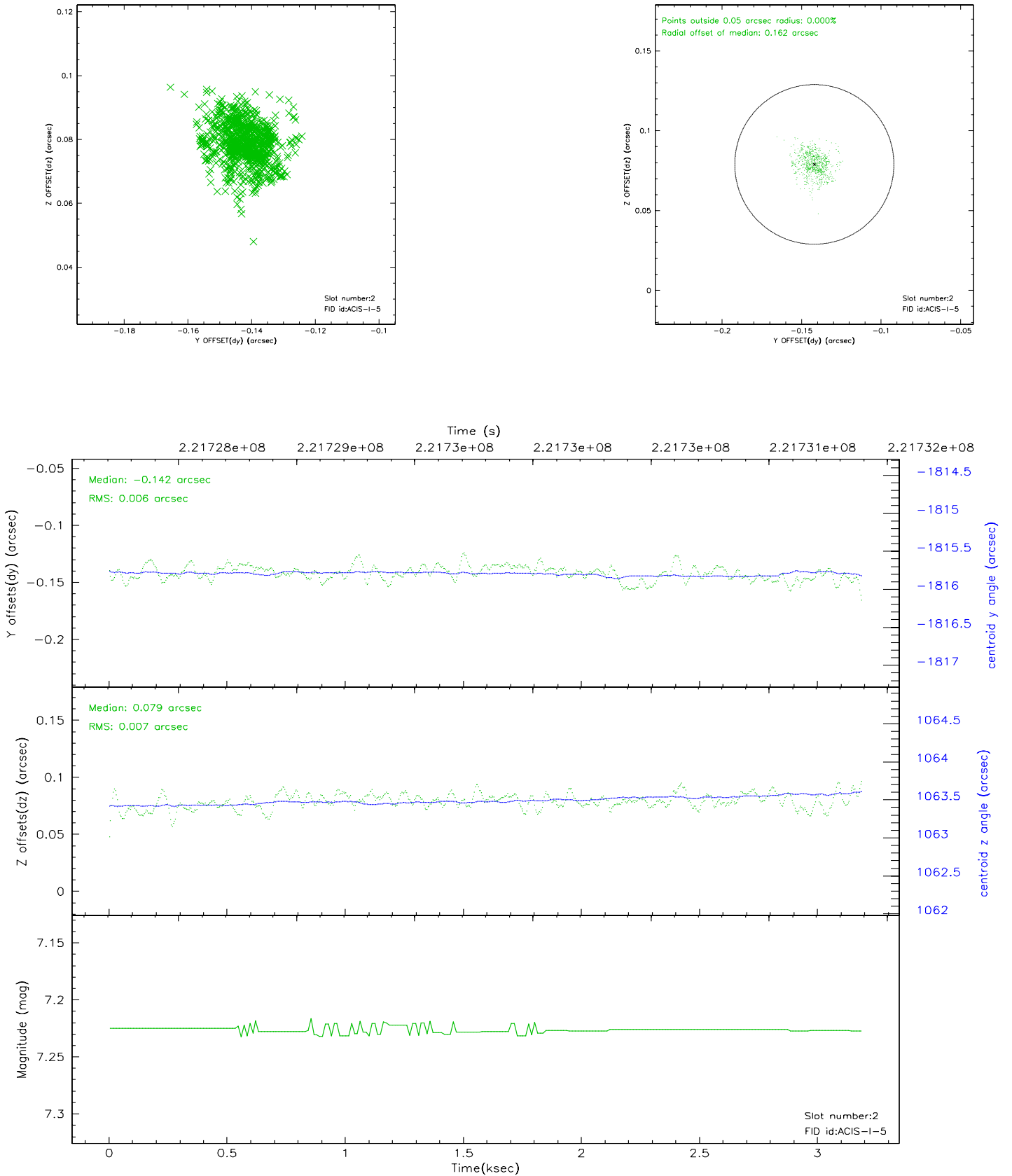
### 2.5.1 Slot 0



## 2.5.2 Slot 1

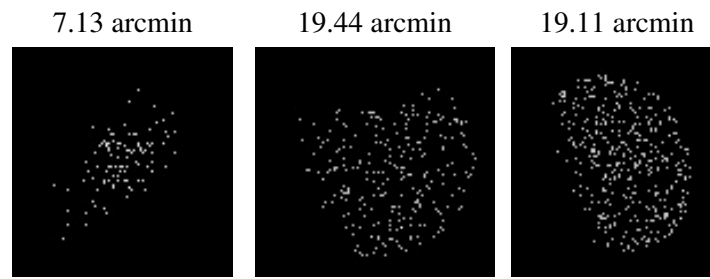


## 2.5.3 Slot 2





### 3 Point Sources



## A Summary

### A.1 Status

V&V Scientist	Beth Sundheim
V&V Date (YYYY-MM-DD)	2006.02.16
V&V Edition	1
V&V Disposition and Status	OK
V&V Charge Time	3.132799

### A.2 Comments

Charge time:

Using existing charge time of 3.132799.