

V&V Reference Report

L2 ASCDS Version : 8.5.1.1

Observation 6341 - L2 Version 4
Chandra X-Ray Center

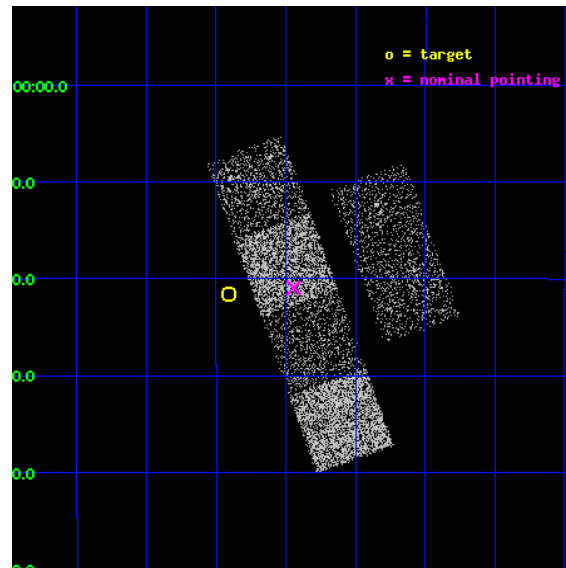
L2 Processing Date : Dec 25 2012

Contents

1	Front	2
2	OBI	3
2.1	OBI	3
2.1.1	Images	3
2.1.2	Bias	3
2.1.3	Parameters	4
2.1.4	Events	4
2.2	Compared Parameters	5
2.3	Aspect	6
2.4	Star Slots	9
2.4.1	Slot 3	9
2.4.2	Slot 4	10
2.4.3	Slot 5	11
2.4.4	Slot 6	12
2.4.5	Slot 7	13
2.5	FID Slots	14
2.5.1	Slot 0	14
2.5.2	Slot 1	15
2.5.3	Slot 2	16
A	Summary	17
A.1	Status	17
A.2	Comments	17

1 Front

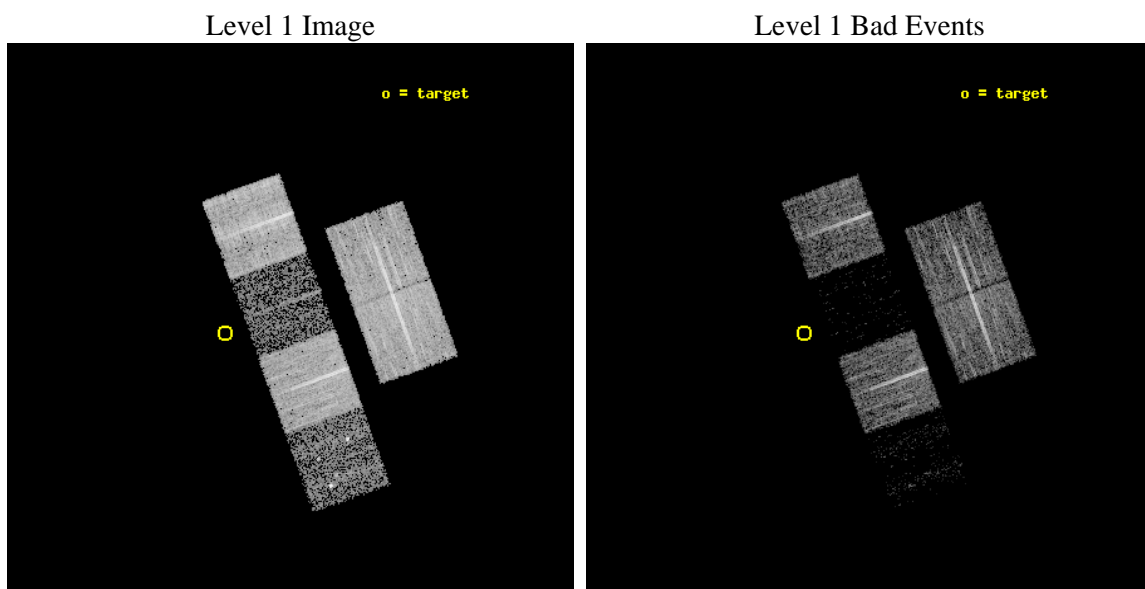
seq_num	100057	Sequence number
obs_id	6341	Observation id
title	Comet 9P/Tempel 1 During the Deep Impact Encounter	Proposal title
observer	Dr. Carey Lisse	Principal investigator
object	9P/Tempel 1	Source name
dtcycle	0	
cycle	P	events from which exps? Prim/Second/Both
ra_targ	209.227379	Observer's specified target RA [deg]
dec_targ	-13.35904	Observer's specified target Dec [deg]
ra_nom	209.110627	Nominal RA [deg]
dec_nom	-13.349134	Nominal Dec [deg]
roll_nom	250.079468	Nominal Roll [deg]
revision	4	Processing version of data
ontime	8508.7999683022	Sum of GTIs [s]
liveltime	8401.0564197194	Livetime [s]
ontime2	8508.7999683022	Sum of GTIs [s]
ontime3	8508.7999683022	Sum of GTIs [s]
ontime5	8508.7999683022	Sum of GTIs [s]
ontime6	8508.7999683022	Sum of GTIs [s]
ontime7	8508.7999683022	Sum of GTIs [s]
ontime8	8505.5589980185	Sum of GTIs [s]
l2events	12418	Number of level 2 events



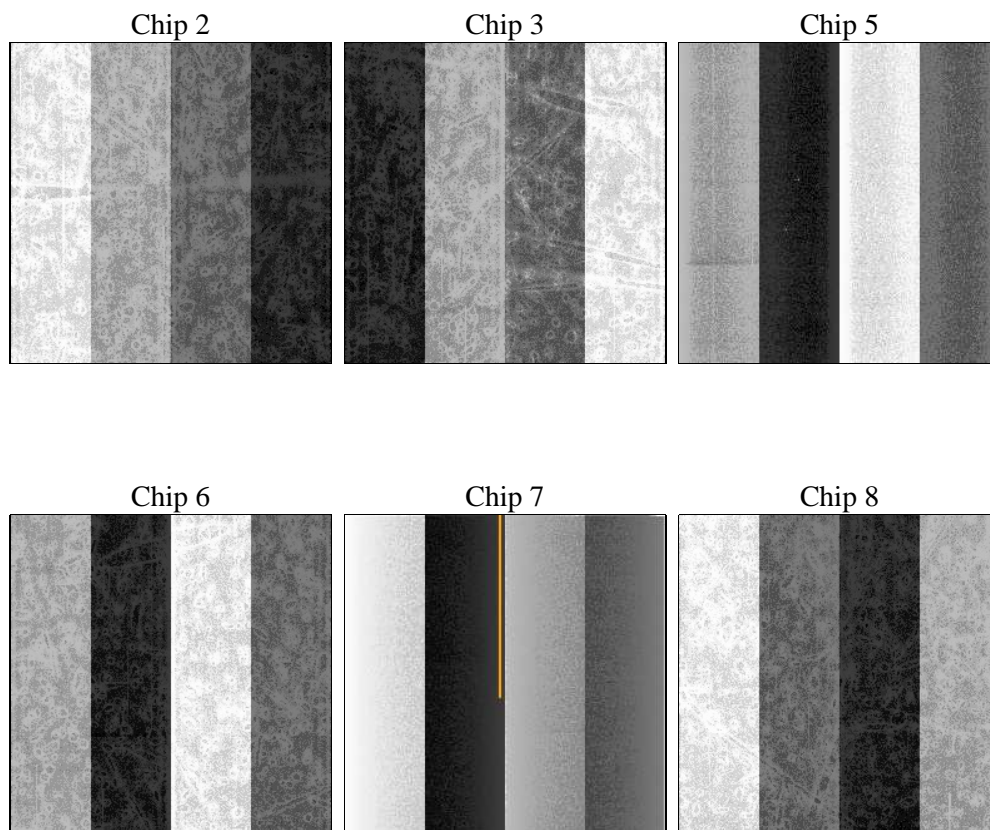
2 OBI

2.1 OBI

2.1.1 Images



2.1.2 Bias



2.1.3 Parameters

obi_num	1	Obi number	sched_exp_time	8325.000000	[s] Scheduled observation exposure time
ascdsver	8.5.1.1	Processing system revision	ontime	8508.7999683022	Sum of GTIs [s]
caldsver	4.5.5	 	ontime2	8508.7999683022	Sum of GTIs [s]
date	2012-12-26T00:20:45	Date and time of file creation	ontime3	8508.7999683022	Sum of GTIs [s]
revision	4	Processing version of data	ontime5	8508.7999683022	Sum of GTIs [s]
			ontime6	8508.7999683022	Sum of GTIs [s]
			ontime7	8508.7999683022	Sum of GTIs [s]
			ontime8	8505.5589980185	Sum of GTIs [s]
			l1events	168184	Number of level 1 events

2.1.4 Events

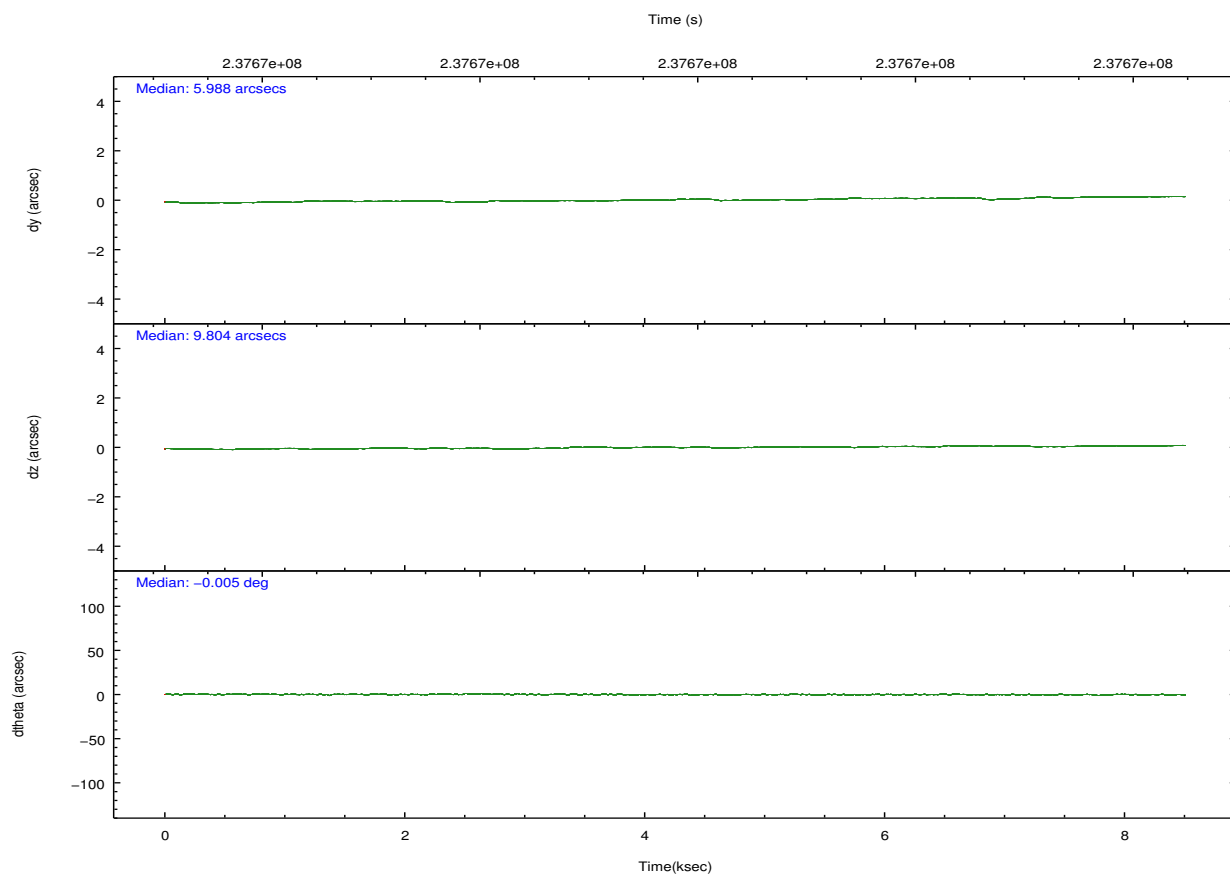
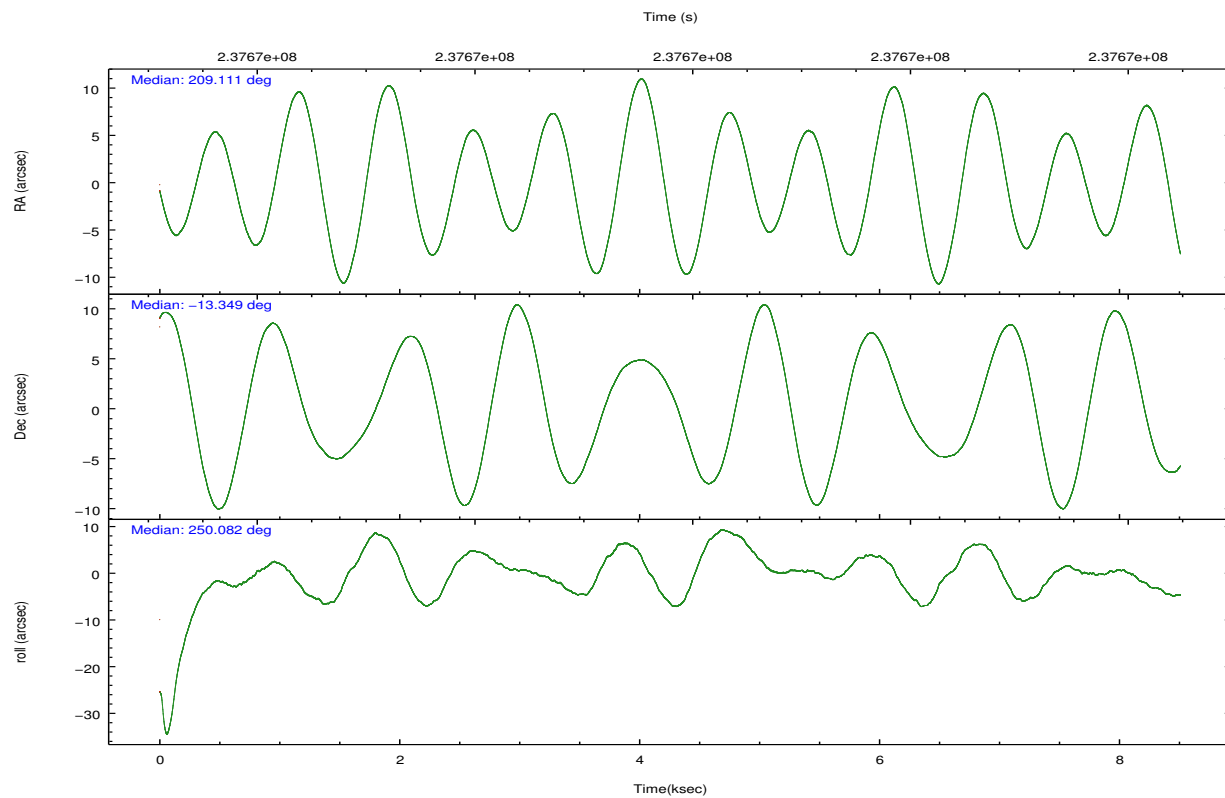
	ccd 2	ccd 3	ccd 5	ccd 6	ccd 7	ccd 8
level 1 events	39771	34725	8149	36939	5295	43305
rejected events	37985	33527	2138	35357	1131	32449
rejected %	95%	96%	26%	95%	21%	74%

	ccd 2	ccd 3	ccd 5	ccd 6	ccd 7	ccd 8
grade 0 events	735	585	2436	794	1198	3226
	1%	1%	29%	2%	22%	7%
grade 1 events	4	6	76	7	25	30
	0%	0%	0%	0%	0%	0%
grade 2 events	429	137	1978	332	1291	2528
	1%	0%	24%	0%	24%	5%
grade 3 events	263	213	653	200	635	1277
	0%	0%	8%	0%	11%	2%
grade 4 events	256	185	620	203	610	1156
	0%	0%	7%	0%	11%	2%
grade 5 events	68	27	338	30	130	246
	0%	0%	4%	0%	2%	0%
grade 6 events	195	129	612	118	603	3085
	0%	0%	7%	0%	11%	7%
grade 7 events	37821	33443	1436	35255	803	31757
	95%	96%	17%	95%	15%	73%

2.2 Compared Parameters

Parameter	Planned	Actual	Parameter	Planned	Actual
Instrument	ACIS	ACIS	Obspar format version number	7	7
Detector	ACIS-235678	ACIS-235678	Obspar file type	PREDICTED	ACTUAL
Grating	NONE	NONE	Obspar update status	NONE	UPDATED
Data mode	VFAINT	VFAINT	On-chip summing requested	N	N
Observation mode	POINTING	POINTING	Subarray requested	NONE	NONE
[deg] Pointing RA	209.105339	209.110617518842	Alternating exposures requested	N	N
[deg] Pointing Dec	-13.322399	-13.34915961048586	[s] Primary exposure time	0.000000	3.2
[deg] Pointing Roll	249.921606	250.0794661108962			
[s] Window start time (MET)	237708064.184000	237708064.184000			
[s] Window stop time (MET)	237751264.184000	237751264.184000			
[mm] SIM focus pos	-0.684267	-0.6828225247311905			
[mm] SIM defocus	0	0.001444936568705701			
[mm] SIM translation stage pos	-190.132523	-190.1400660498719			
[mm] SIM translation stage offset	0	0.00754346686406393			
[s] Observation start time (MET)	237665720.184000	237665343.78487			
Observation start date	2005-07-13T18:14:16	2005-07-13T18:09:03			
[s] Observation end time (MET)	237674045.184000	237674179.28528			
Observation end date	2005-07-13T20:33:01	2005-07-13T20:36:19			
Read mode	TIMED	TIMED			

2.3 Aspect

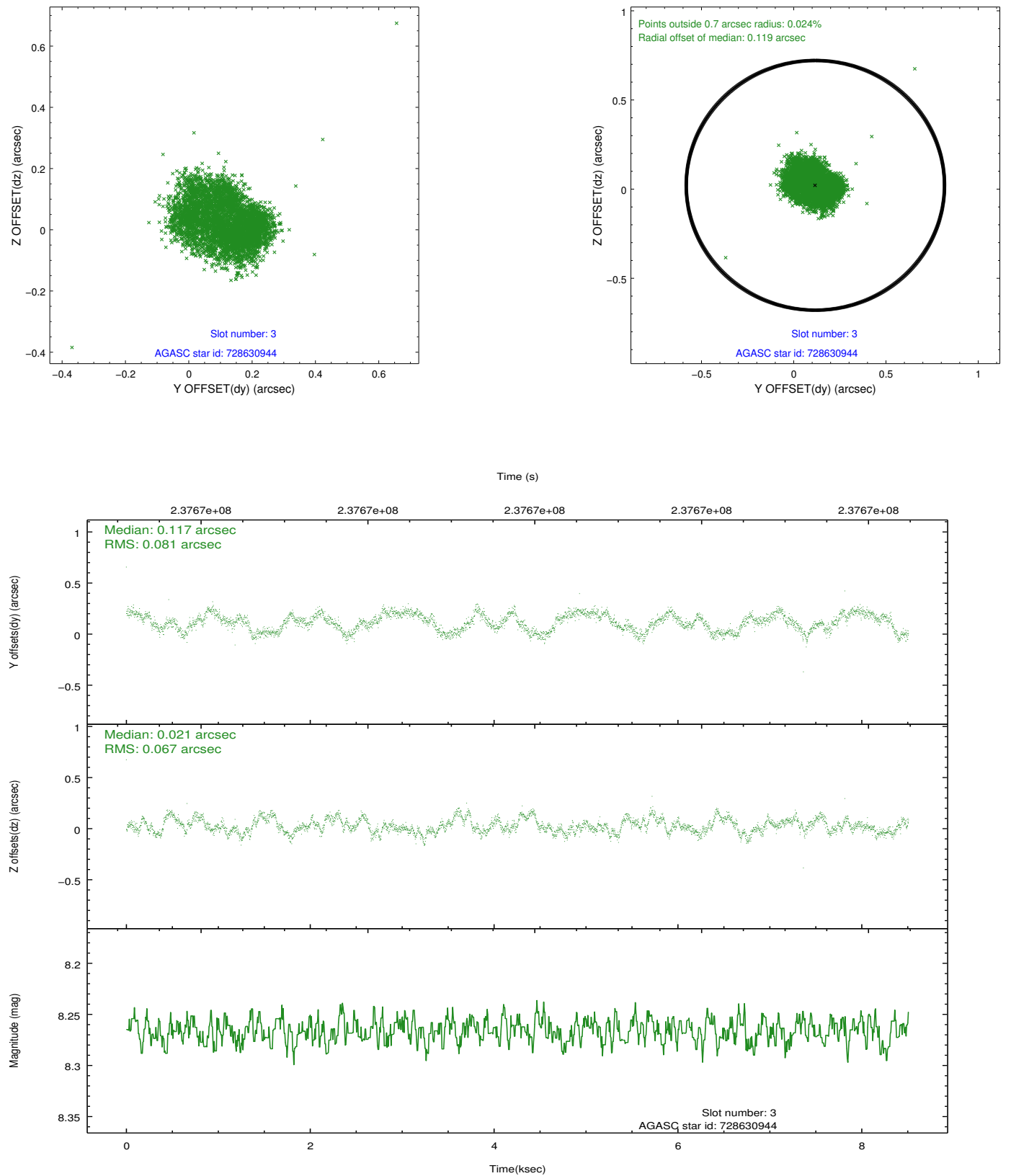


Slot Statistics

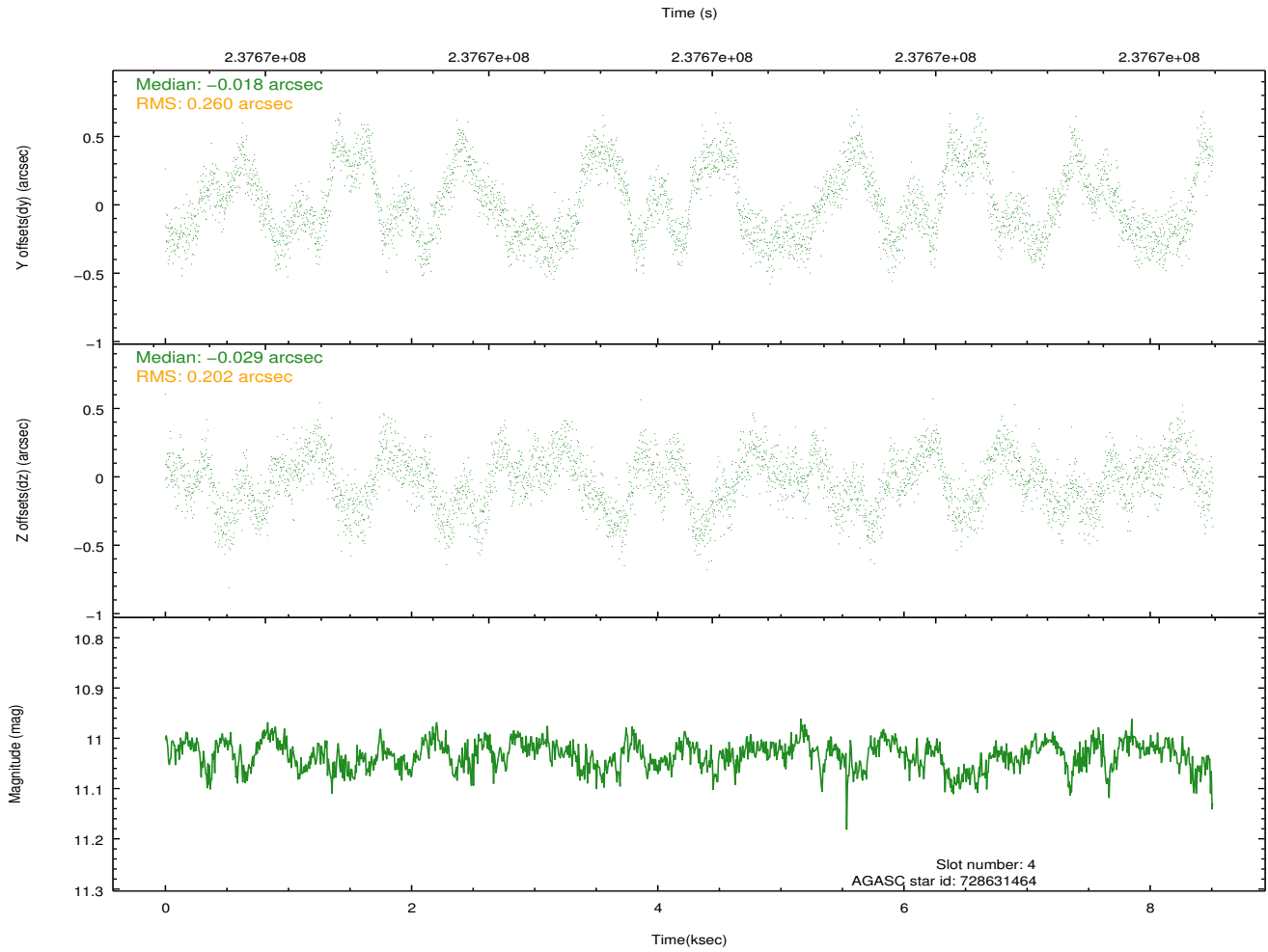
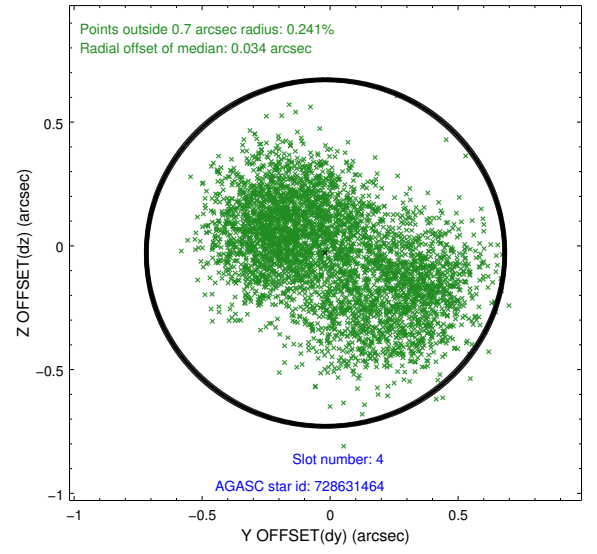
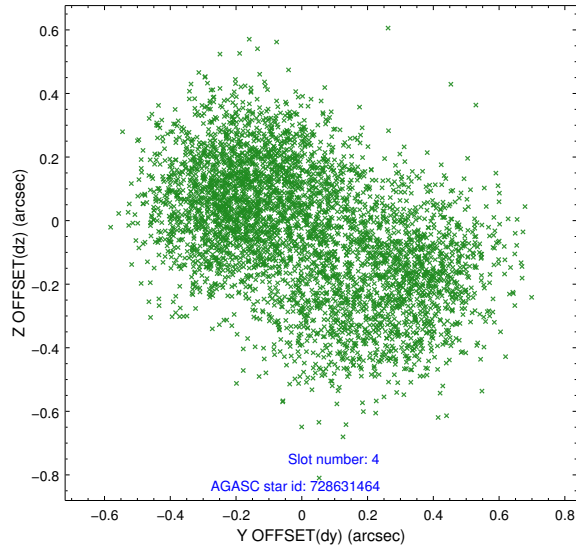
slot	status	id	mag	n_pts	med_dy	med_dz	dr1	dr2	ra	dec	mean_y	mean_z
0	FID	ACIS-S-2	7.10	2076	-0.067	-0.032	0.007	0.011	0.000000	0.000000	-758.77	-1731.08
1	FID	ACIS-S-4	7.21	2076	0.106	0.041	0.006	0.011	0.000000	0.000000	2154.36	176.84
2	FID	ACIS-S-5	7.23	2076	-0.070	-0.000	0.007	0.011	0.000000	0.000000	-1810.80	171.16
3	GUIDE	728630944	8.27	4152	0.117	0.021	0.114	0.167	208.923207	-13.740319	1632.46	-81.29
4	GUIDE	728631464	11.03	4145	-0.018	-0.029	0.363	0.536	208.876674	-12.686242	-1874.39	-1540.18
5	GUIDE	728638600	9.40	4149	-0.041	-0.209	0.123	0.201	209.320543	-13.467304	231.42	886.43
6	GUIDE	728639032	9.16	4148	0.165	0.139	0.106	0.168	209.196450	-13.877558	1768.56	985.70
7	GUIDE	728639792	9.86	4146	-0.236	0.079	0.123	0.202	209.293230	-12.690895	-2361.07	-160.04

2.4 Star Slots

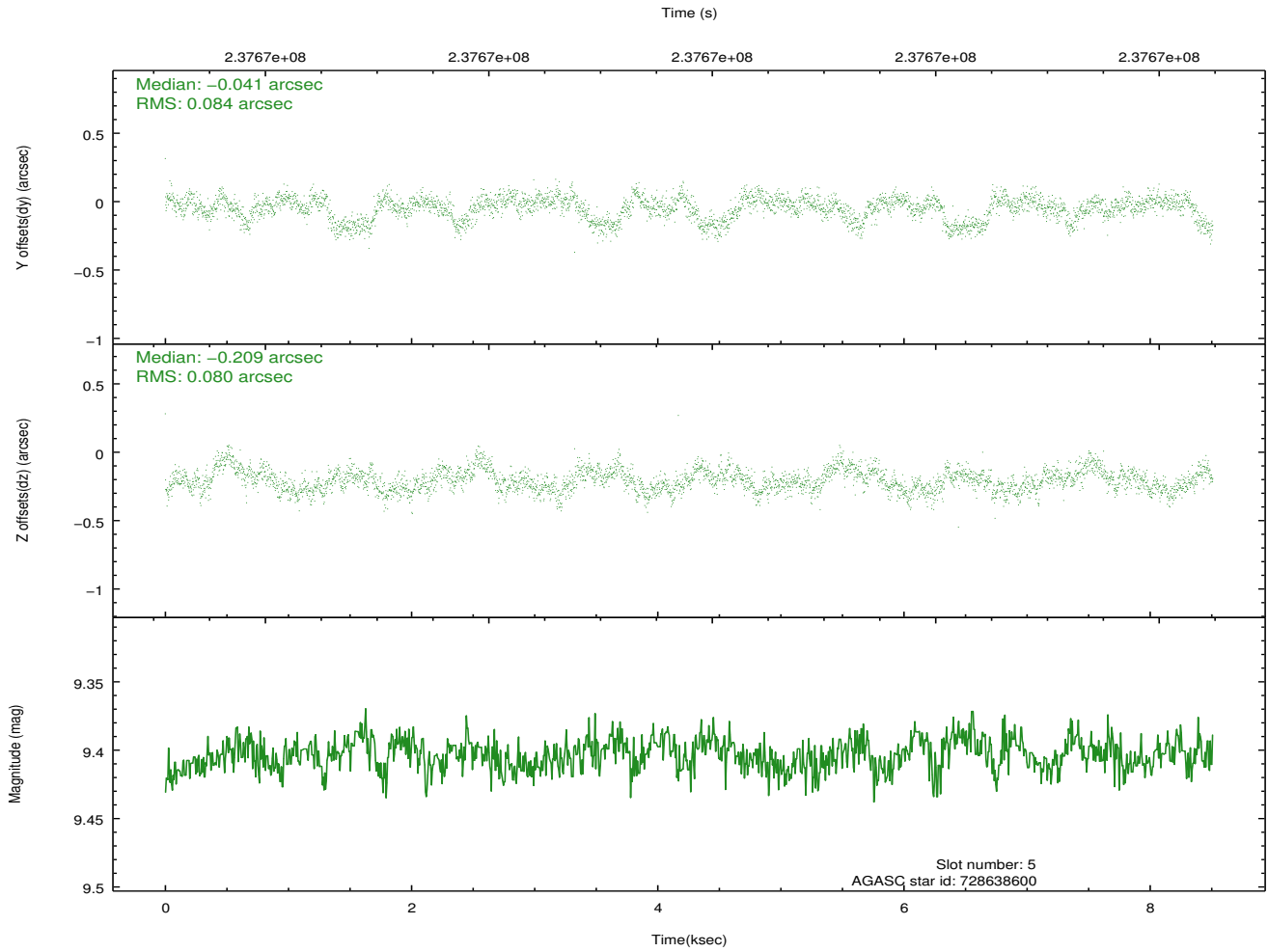
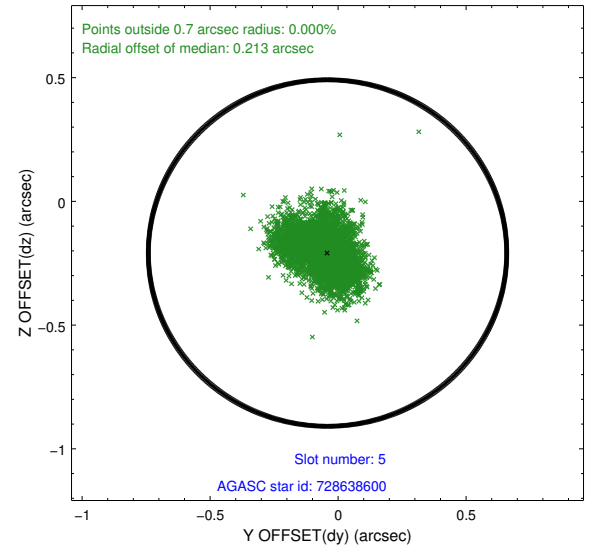
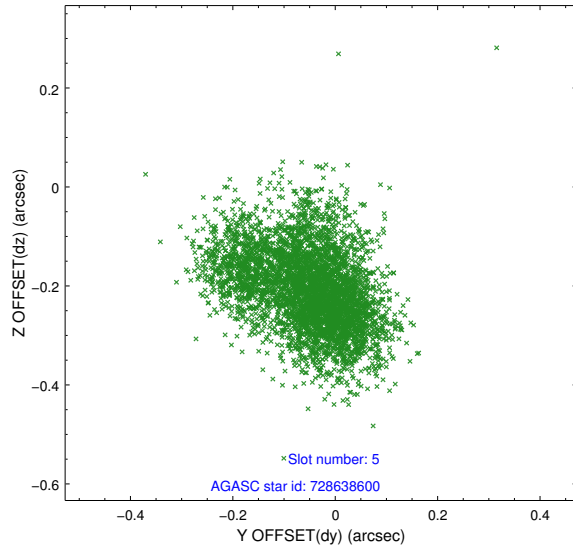
2.4.1 Slot 3



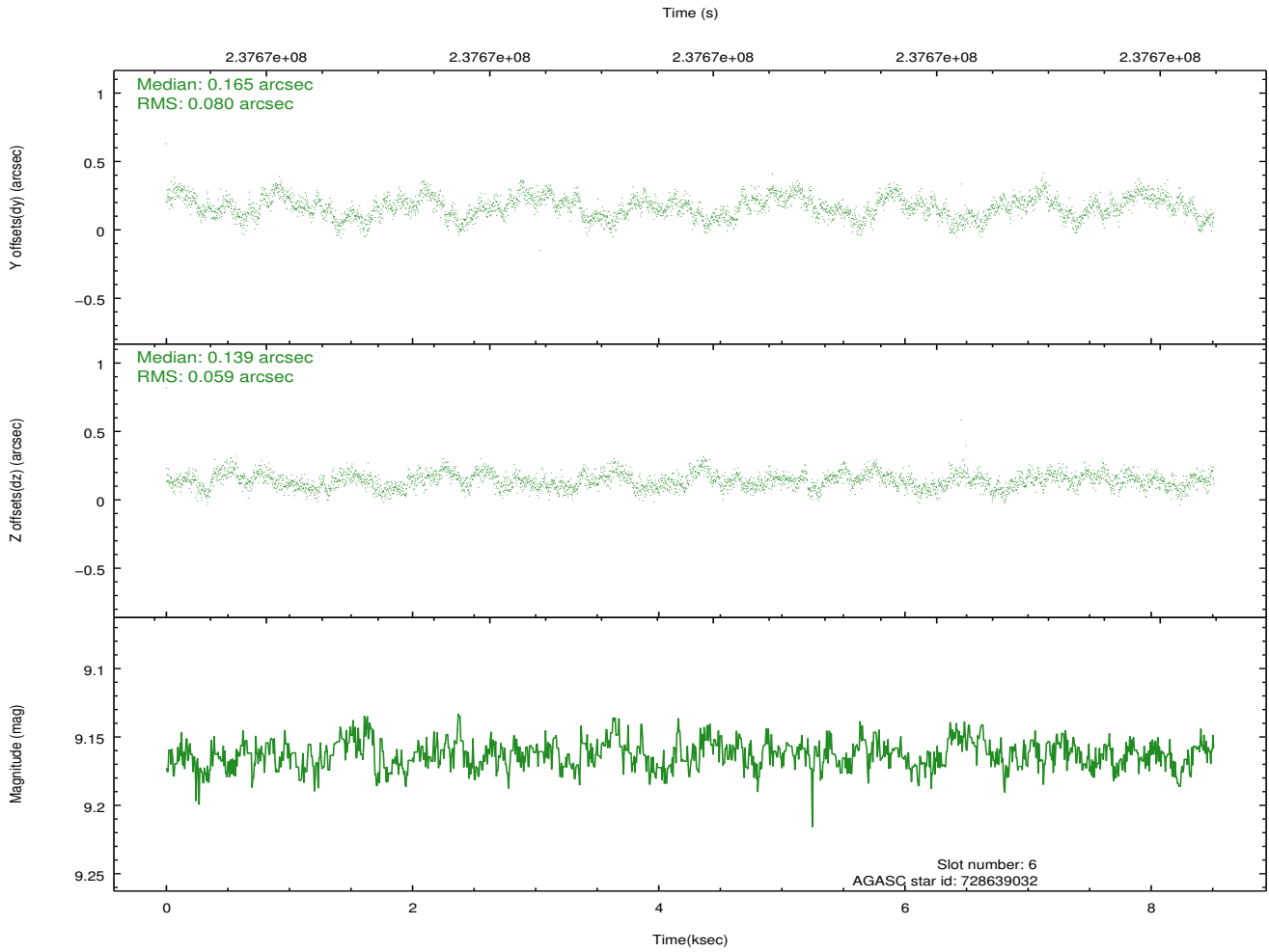
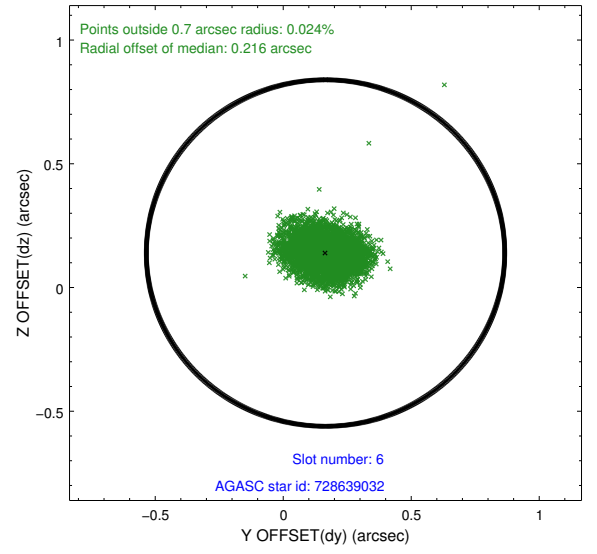
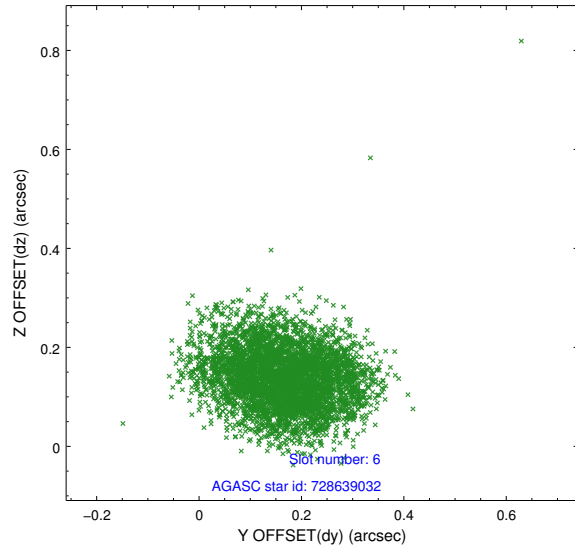
2.4.2 Slot 4



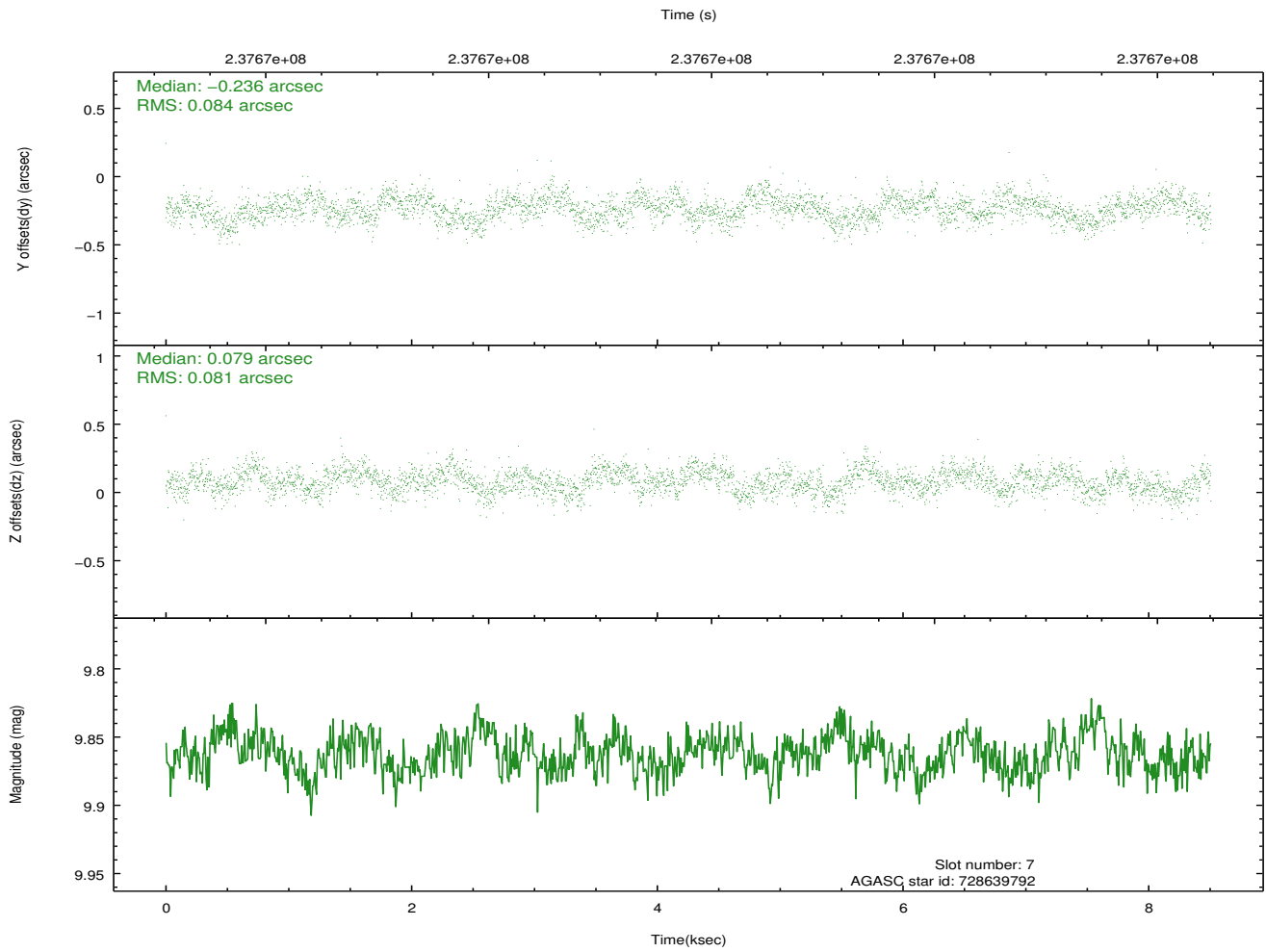
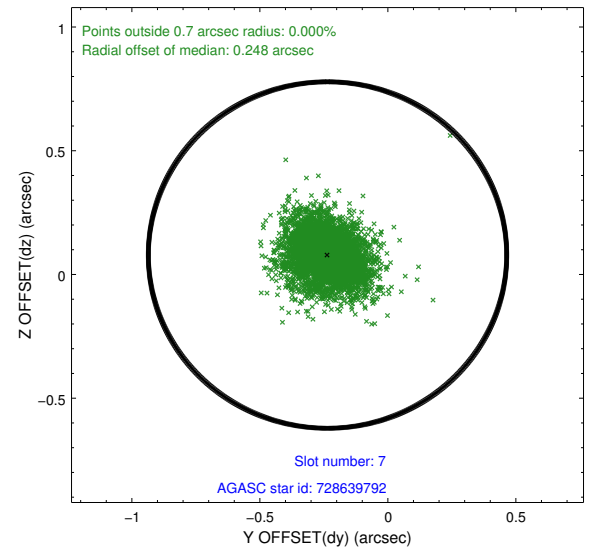
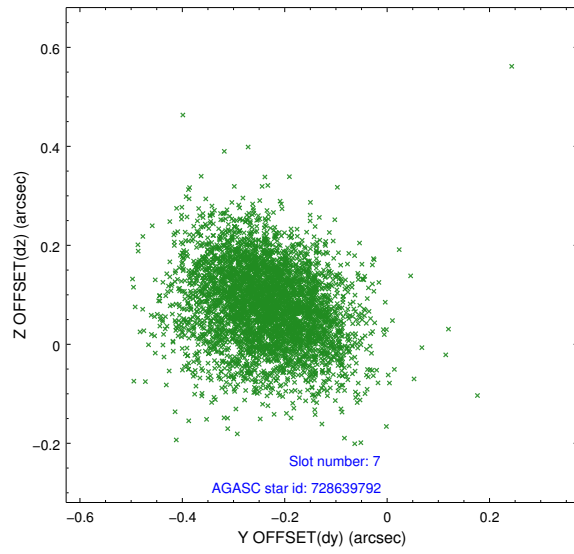
2.4.3 Slot 5



2.4.4 Slot 6

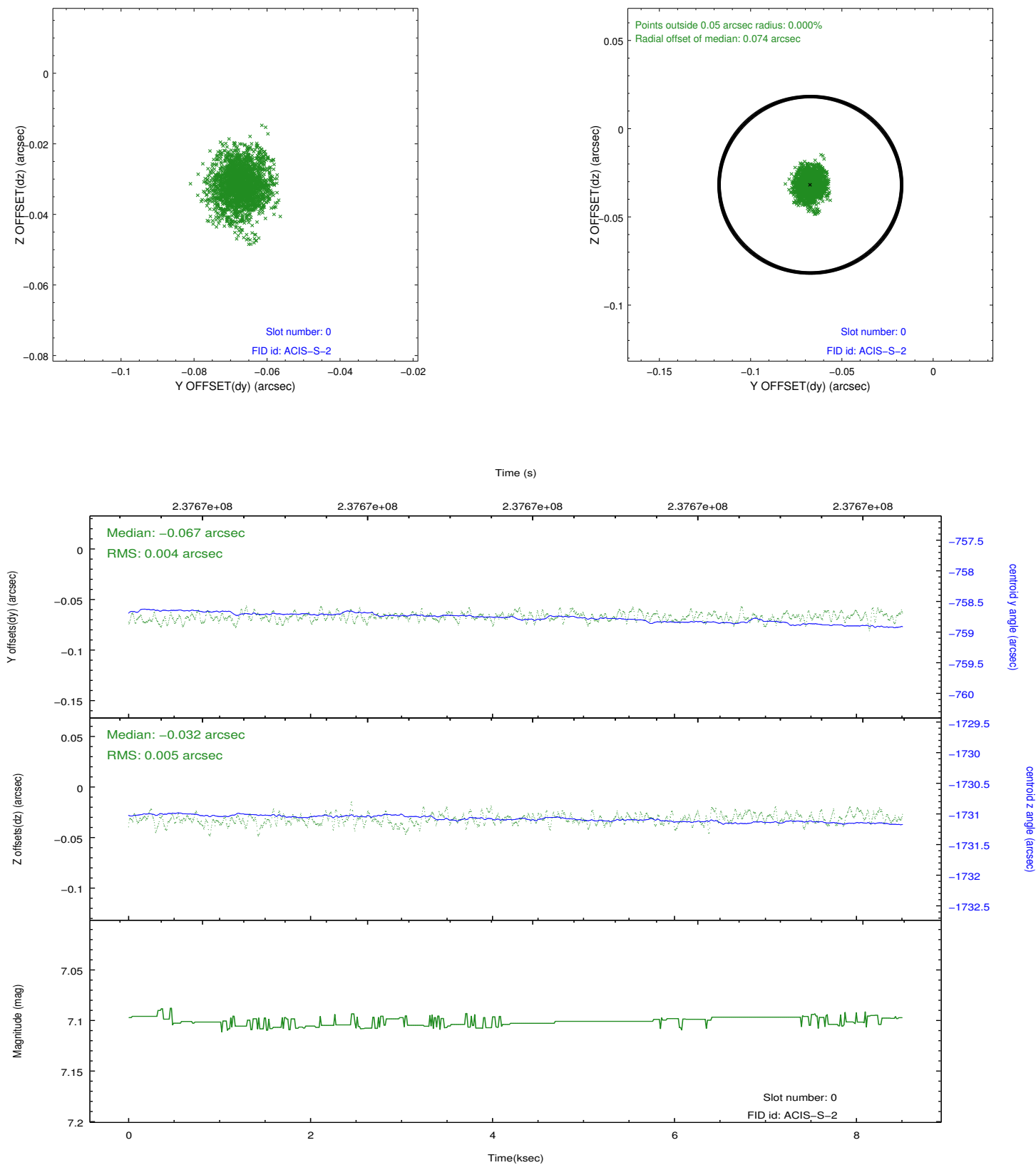


2.4.5 Slot 7

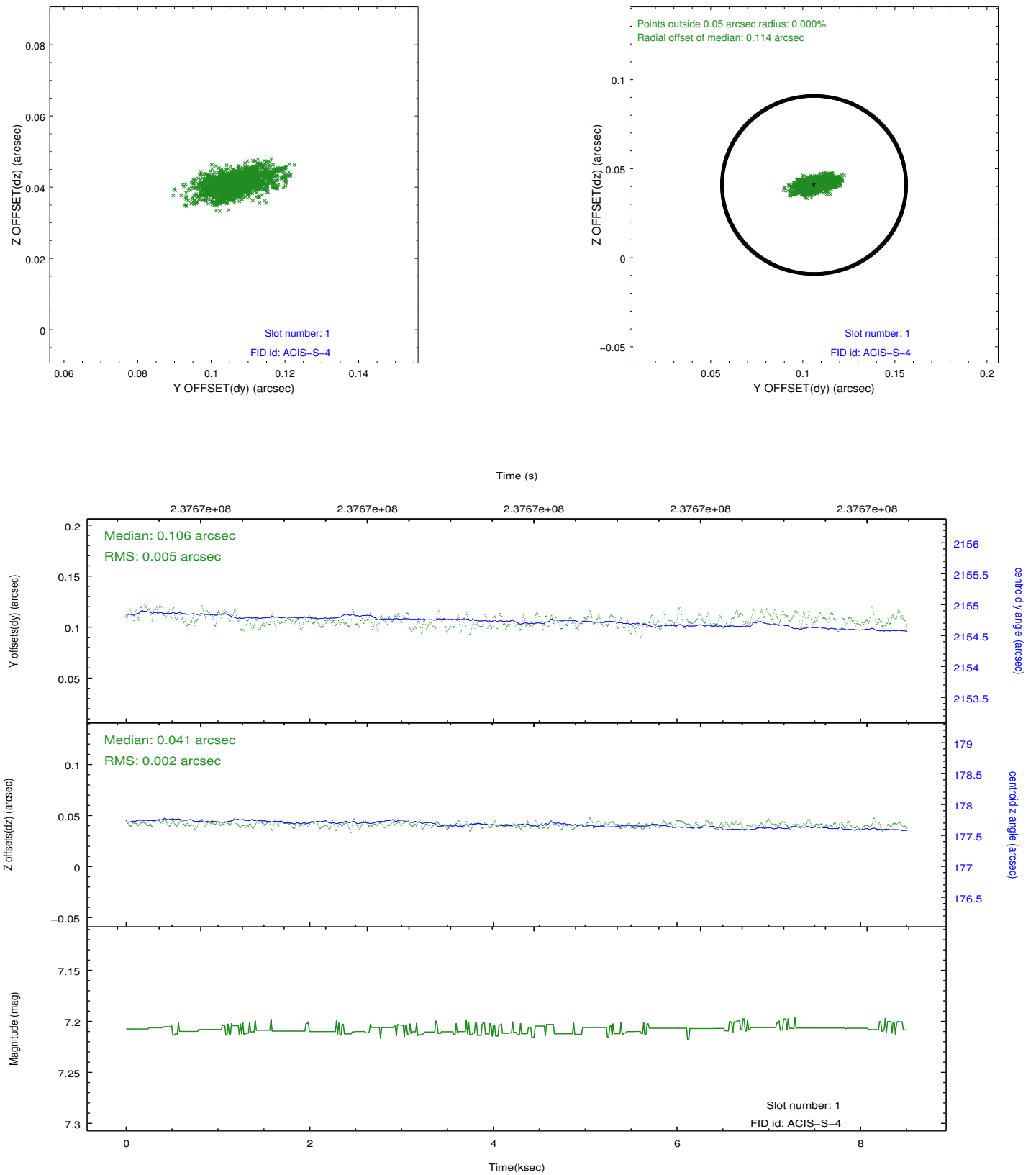


2.5 FID Slots

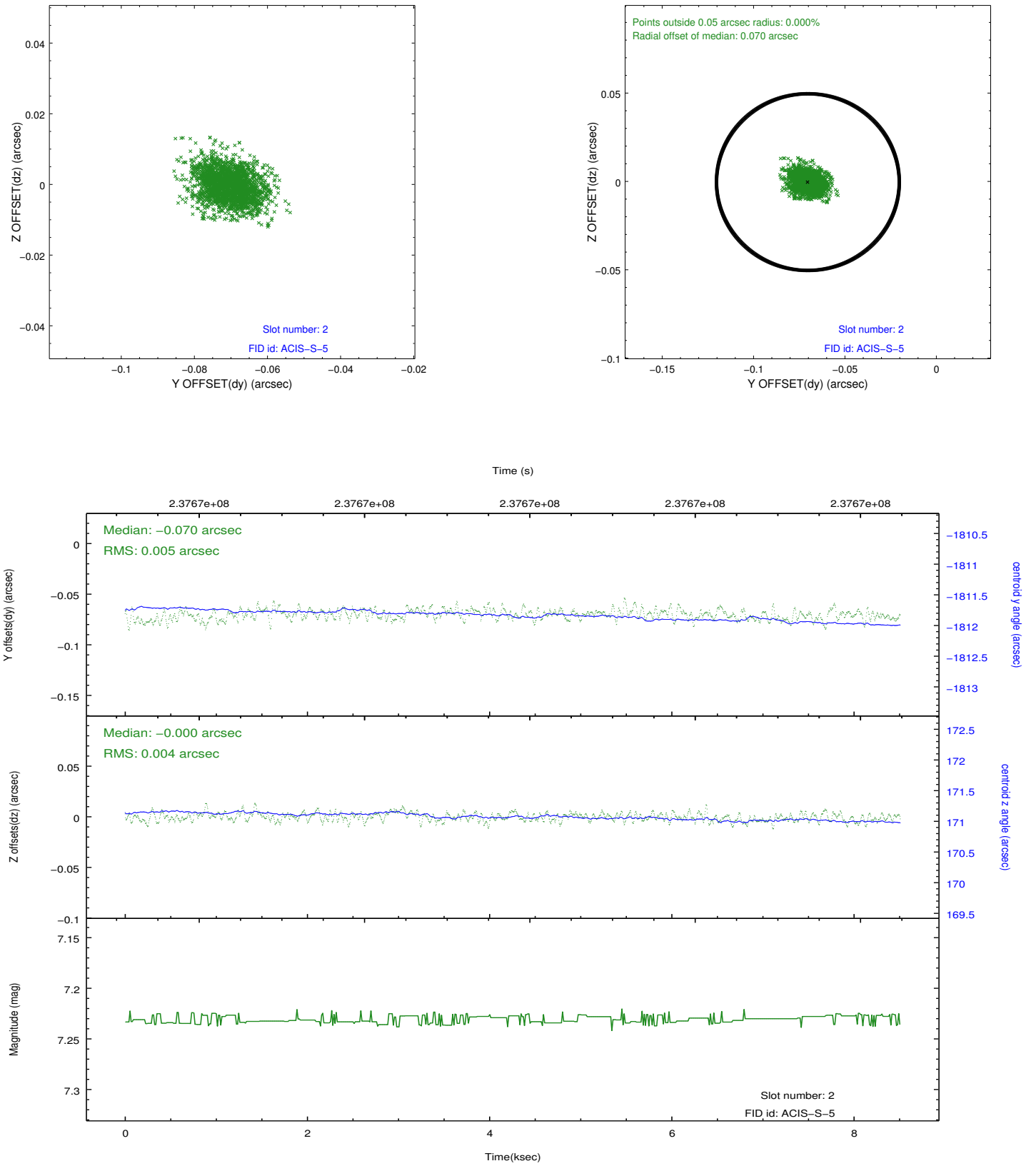
2.5.1 Slot 0



2.5.2 Slot 1



2.5.3 Slot 2



A Summary

A.1 Status

V&V Scientist	Beth Sundheim
V&V Date (YYYY-MM-DD)	2013.01.18
V&V Edition	1
V&V Disposition and Status	OK
V&V Charge Time	8.508799

A.2 Comments

Window preference was not met.