

V&V Reference Report

L2 ASCDS Version : 7.6.7.1

Observation 6330 - L2 Version 002
Chandra X-Ray Center

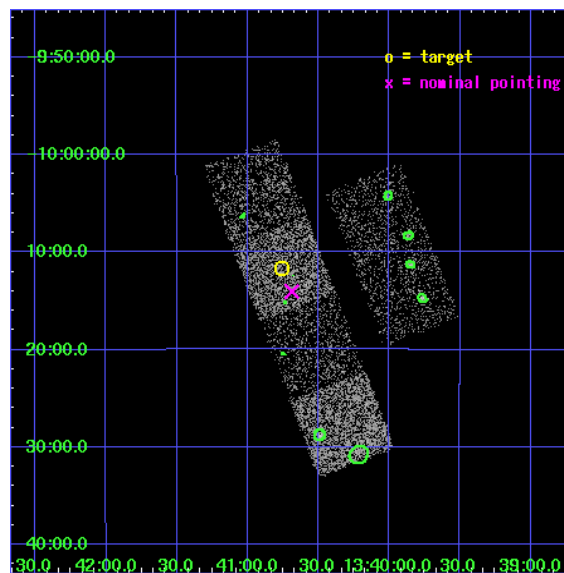
L2 Processing Date : Mar 13 2006

Contents

1	Front	2
2	OBI	3
2.1	OBI	3
2.1.1	Images	3
2.1.2	Bias	3
2.1.3	Parameters	4
2.1.4	Events	4
2.2	Compared Parameters	5
2.3	Aspect	6
2.4	Star Slots	9
2.4.1	Slot 3	9
2.4.2	Slot 4	10
2.4.3	Slot 5	11
2.4.4	Slot 6	12
2.4.5	Slot 7	13
2.5	FID Slots	14
2.5.1	Slot 0	14
2.5.2	Slot 1	15
2.5.3	Slot 2	16
3	Point Sources	17
A	Summary	18
A.1	Status	18
A.2	Comments	18

1 Front

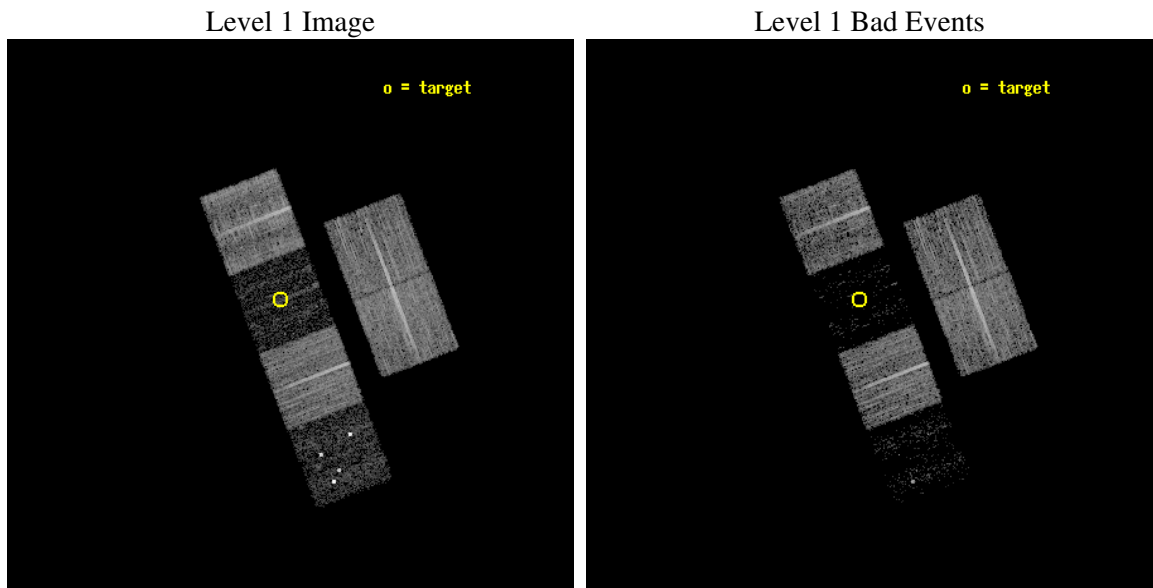
seq_num	100055
obs_id	6330
title	Comet 9P/Tempel 1 During the Deep Impact Encounter
observer	Dr. Carey Lisse
object	9P/Tempel 1
dtcycle	0
cycle	P
ra_targ	205.189068
dec_targ	-10.194607
ra_nom	205.17187361925
dec_nom	-10.233997781769
roll_nom	249.01822257878
revision	2
ontime	8076.7999699116
livetime	7974.5266654275
ontime2	8073.5589697063
ontime3	8076.7999699116
ontime5	8076.7999699116
ontime6	8076.7999699116
ontime7	8076.7999699116
ontime8	8076.7999699116
l2events	11725



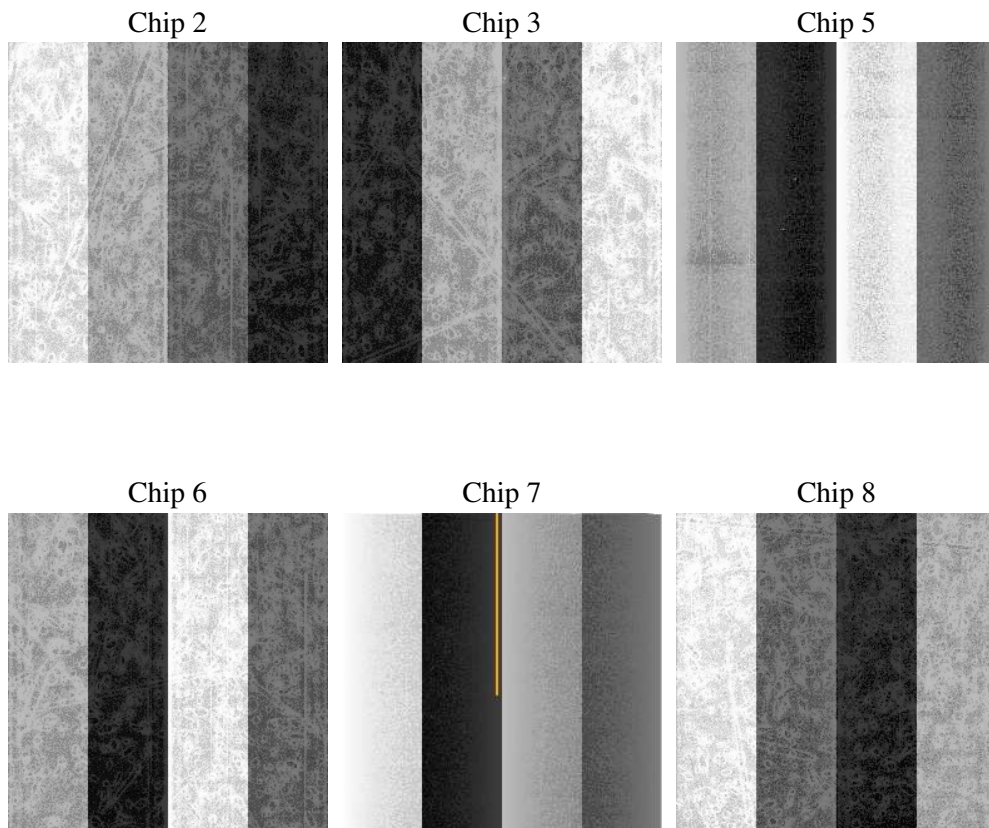
2 OBI

2.1 OBI

2.1.1 Images



2.1.2 Bias



2.1.3 Parameters

obi_num	0
ascdsver	7.6.7.1
caldbver	3.2.1
date	2006-03-14T03:38:06
revision	2

sched_exp_time	7899.000000
ontime	9619.3114502132
ontime2	9616.0704500079
ontime3	9619.3114502132
ontime5	9619.3114502132
ontime6	9619.3114502132
ontime7	9619.3114502132
ontime8	9619.3114502132
l1events	205439

2.1.4 Events

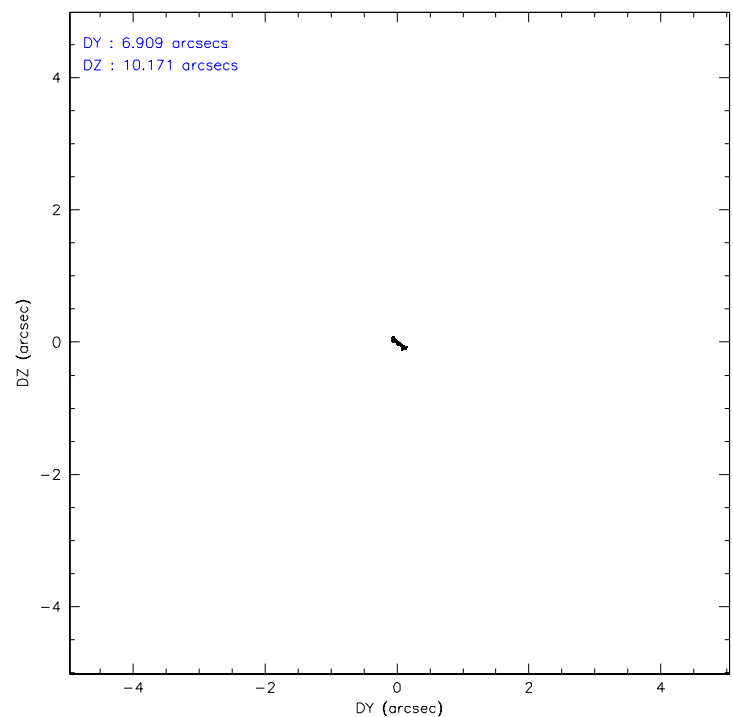
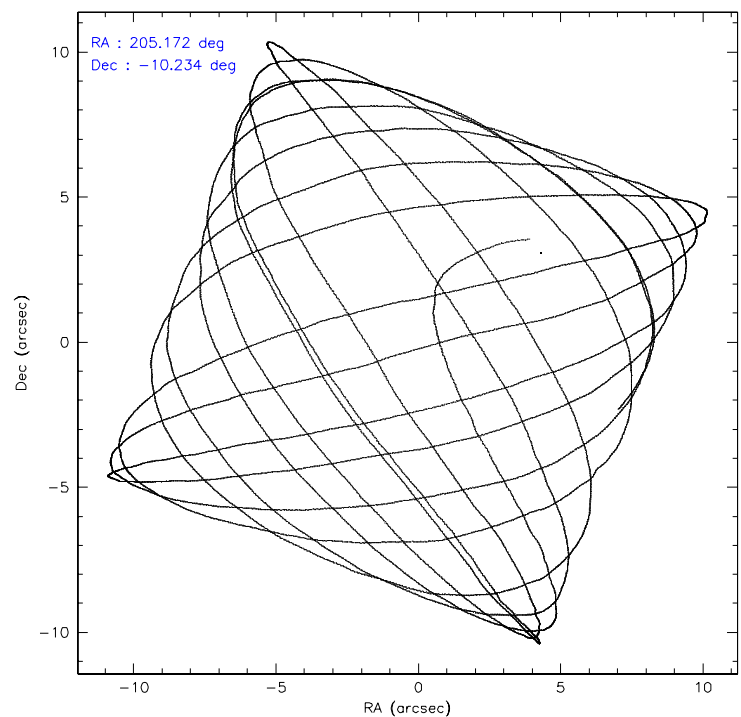
	ccd 2	ccd 3	ccd 5	ccd 6	ccd 7	ccd 8
level 1 events	50084	42792	14844	43733	5890	48096
rejected events	48418	41600	4146	42154	2122	37828
rejected %	96%	97%	27%	96%	36%	78%

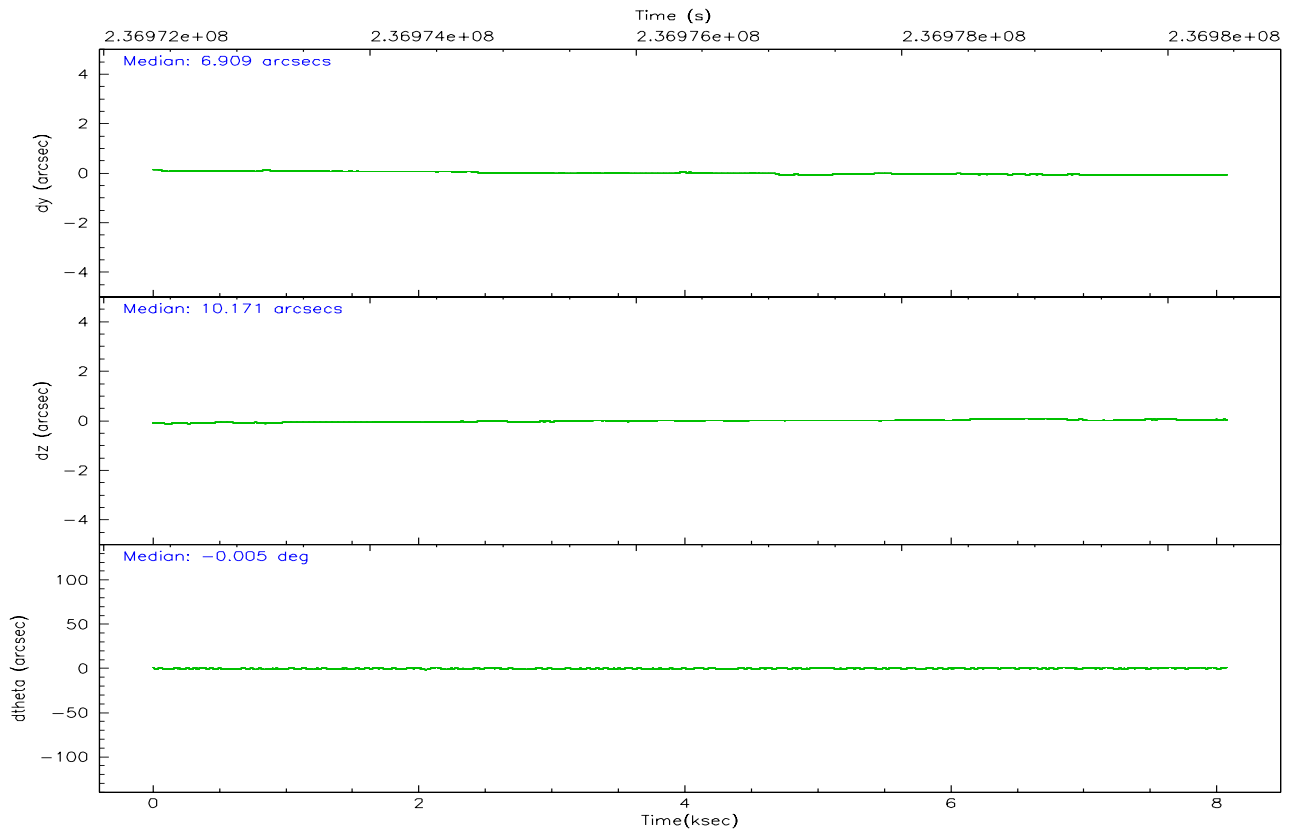
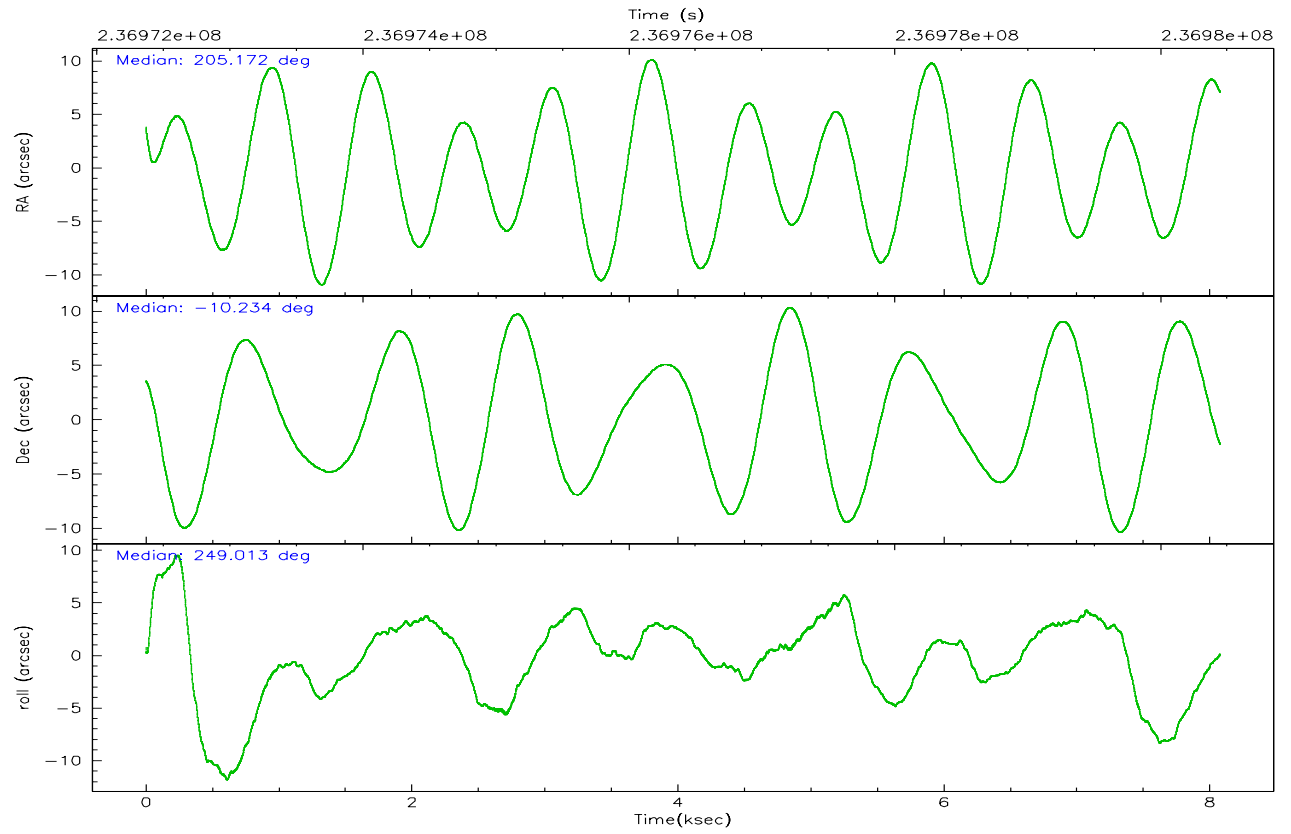
	ccd 2	ccd 3	ccd 5	ccd 6	ccd 7	ccd 8
grade 0 events	865	676	5339	921	1066	3320
	1%	1%	35%	2%	18%	6%
grade 1 events	17	9	253	19	22	26
	0%	0%	1%	0%	0%	0%
grade 2 events	411	168	4711	325	1508	2768
	0%	0%	31%	0%	25%	5%
grade 3 events	245	257	688	268	677	1336
	0%	0%	4%	0%	11%	2%
grade 4 events	284	232	650	272	640	1269
	0%	0%	4%	0%	10%	2%
grade 5 events	44	28	403	40	138	252
	0%	0%	2%	0%	2%	0%
grade 6 events	197	113	727	119	603	3455
	0%	0%	4%	0%	10%	7%
grade 7 events	48021	41309	2073	41769	1236	35670
	95%	96%	13%	95%	20%	74%

2.2 Compared Parameters

Parameter	Planned	Actual	Parameter	Planned	Actual
Instrument	ACIS	ACIS	Obspar format version number	6	6
Detector	ACIS-235678	ACIS-235678	Obspar file type	PREDICTED	ACTUAL
Grating	NONE	NONE	Obspar update status	NONE	UPDATED
Data mode	VFAINT	VFAINT	On-chip summing requested	N	N
Observation mode	POINTING	POINTING	Subarray requested	NONE	NONE
Pointing RA	205.167110	205.1718736192531	Alternating exposures requested	N	N
Pointing Dec	-10.207166	-10.23399778176901	Primary exposure time	0.000000	3.2
Pointing Roll	248.860769	249.0182225787803			
Window start time	236966464.184000	236966464.184000			
Window stop time	237031264.184000	237031264.184000			
SIM focus pos (mm)	-0.684267	-0.6828225247311905			
SIM defocus (mm)	0	0.001444936568705701			
SIM translation stage pos (mm)	-190.132523	-190.1400660498719			
SIM translation stage offset (mm)	0	0.00754346686406393			
Observation start time	236972548.184000	236970774.5406			
Observation start date	2005-07-05T17:41:24	2005-07-05T17:12:54			
Observation end time	236980447.184000	236980581.22855			
Observation end date	2005-07-05T19:53:03	2005-07-05T19:56:21			
Read mode	TIMED	TIMED			

2.3 Aspect



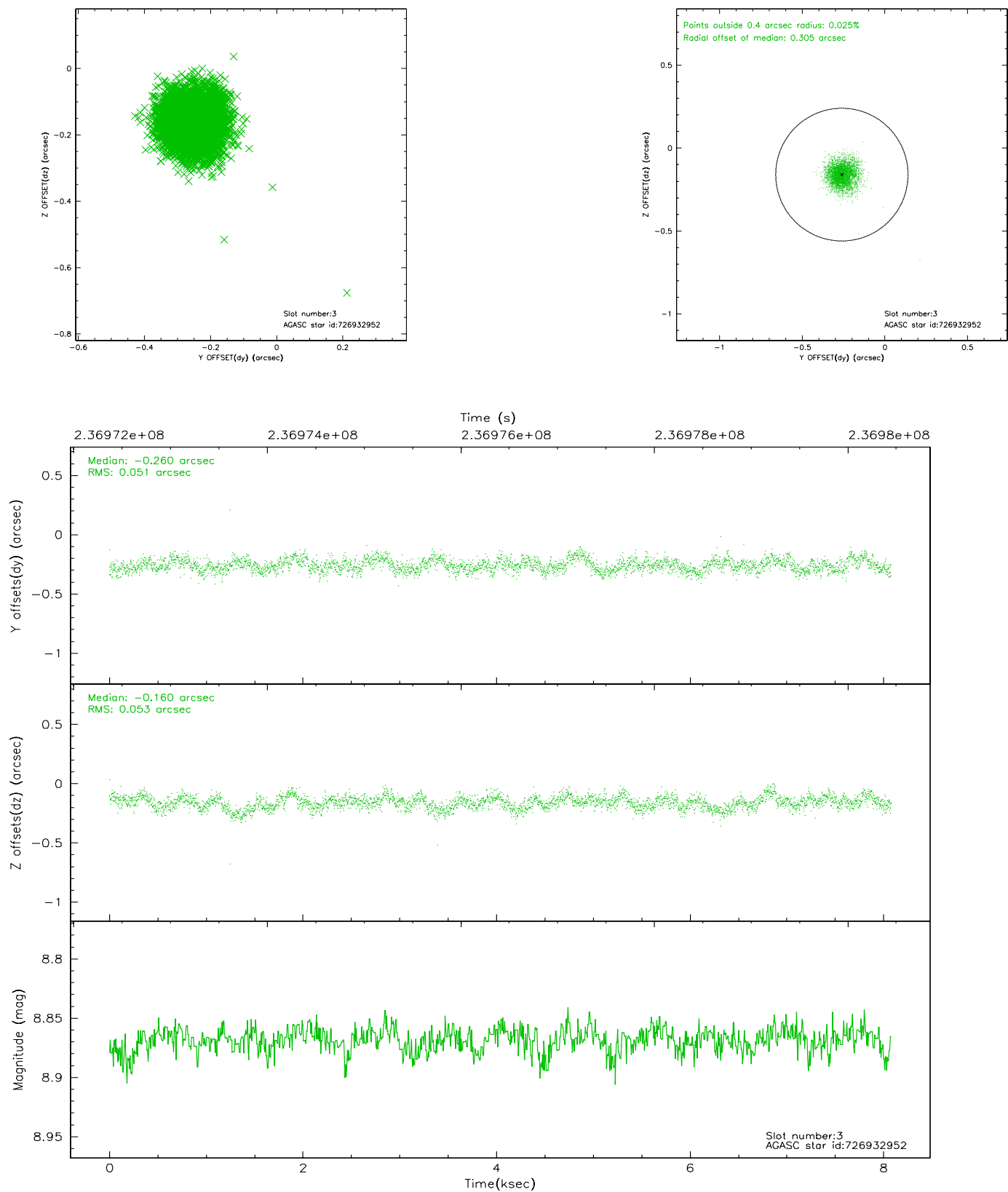


Slot Statistics

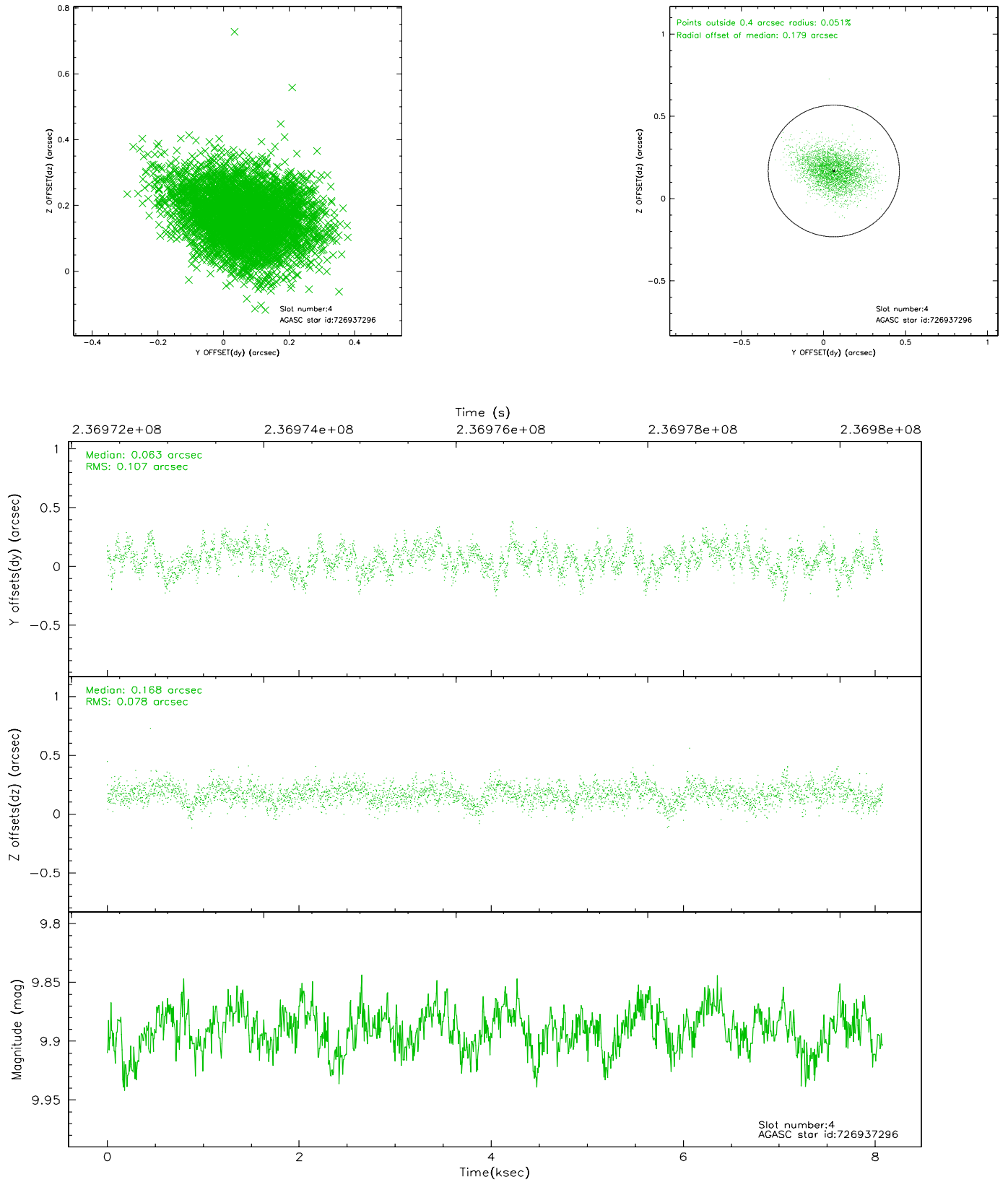
slot	status	id	mag	n_pts	med_dy	med_dz	dr1	dr2	ra	dec	mean_y	mean_z
0	FID	ACIS-S-2	7.11	1971	-0.058	-0.009	0.006	0.011	0.000000	0.000000	-759.68	-1731.44
1	FID	ACIS-S-4	7.21	1971	0.074	0.030	0.005	0.009	0.000000	0.000000	2153.37	176.43
2	FID	ACIS-S-5	7.23	1971	-0.047	-0.012	0.006	0.011	0.000000	0.000000	-1811.66	170.76
3	GUIDE	726932952	8.87	3941	-0.260	-0.160	0.077	0.124	205.485641	-9.671333	-2206.40	358.69
4	GUIDE	726937296	9.89	3937	0.063	0.168	0.139	0.232	205.957534	-9.863016	-2163.98	2169.43
5	GUIDE	727320264	9.55	3939	0.067	0.156	0.128	0.196	205.464326	-10.871323	1851.26	1843.61
6	GUIDE	727320712	10.43	3940	0.092	-0.119	0.223	0.374	204.468965	-10.254166	1053.40	-2244.34
7	GUIDE	727326472	10.08	3922	0.038	-0.044	0.153	0.255	205.620857	-10.902930	1759.19	2399.47

2.4 Star Slots

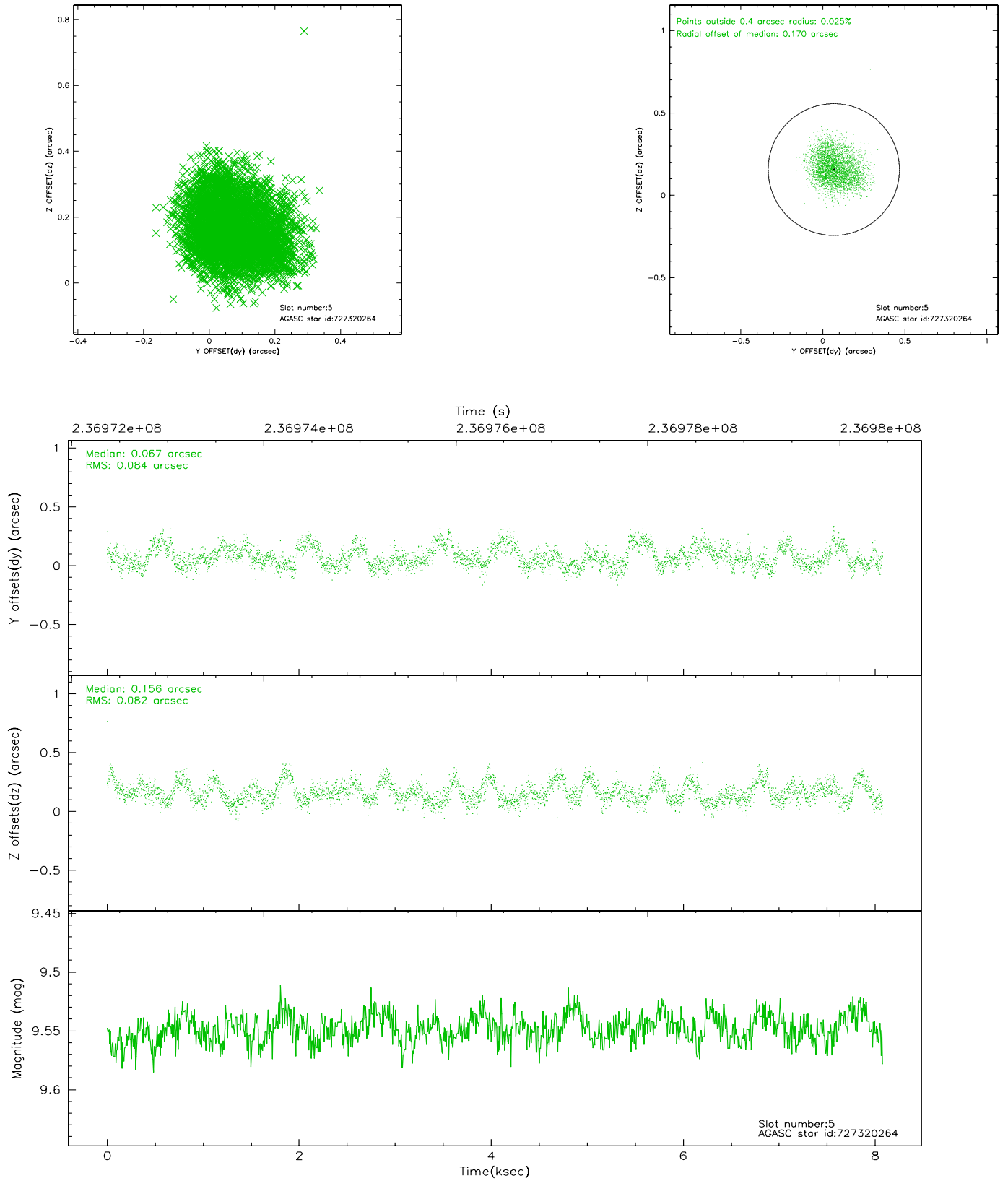
2.4.1 Slot 3



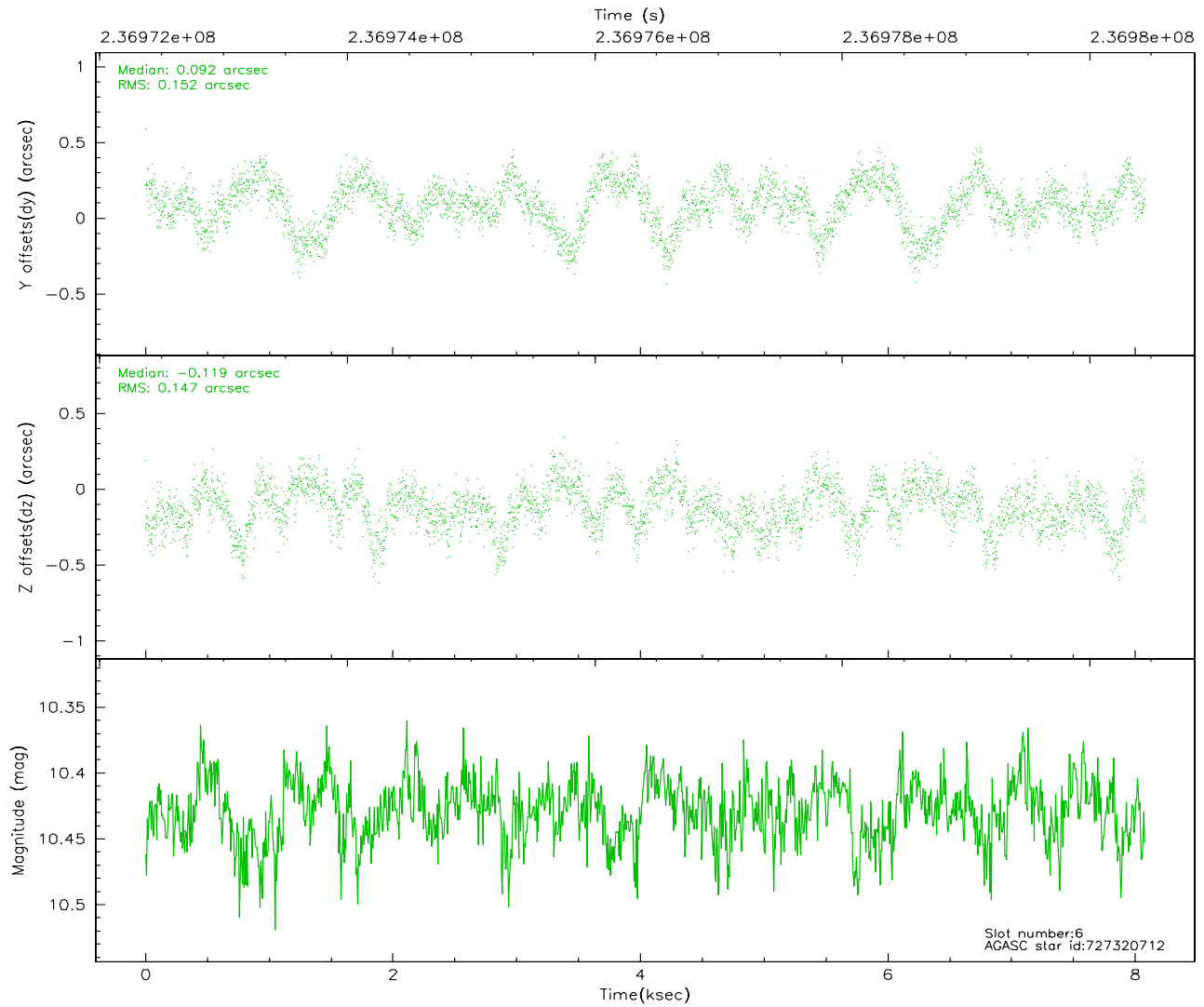
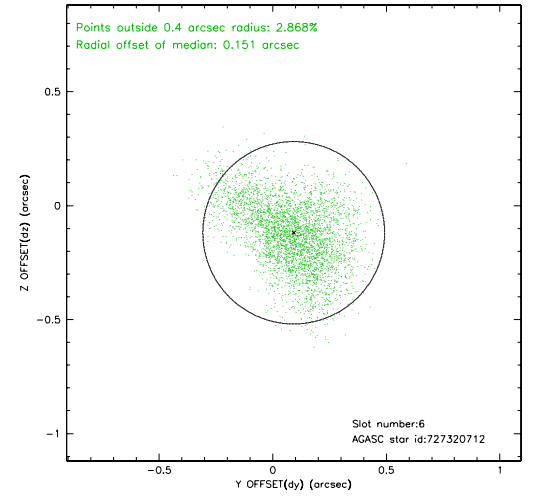
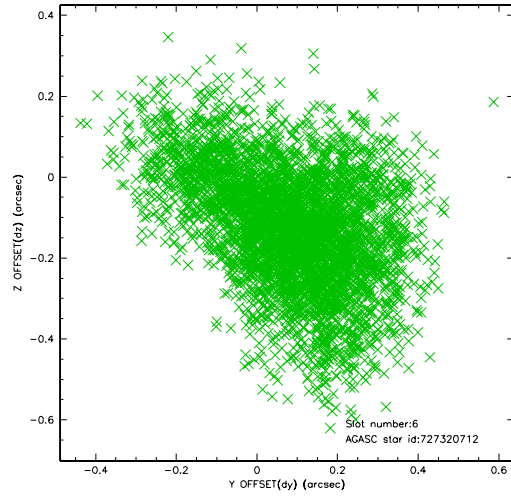
2.4.2 Slot 4



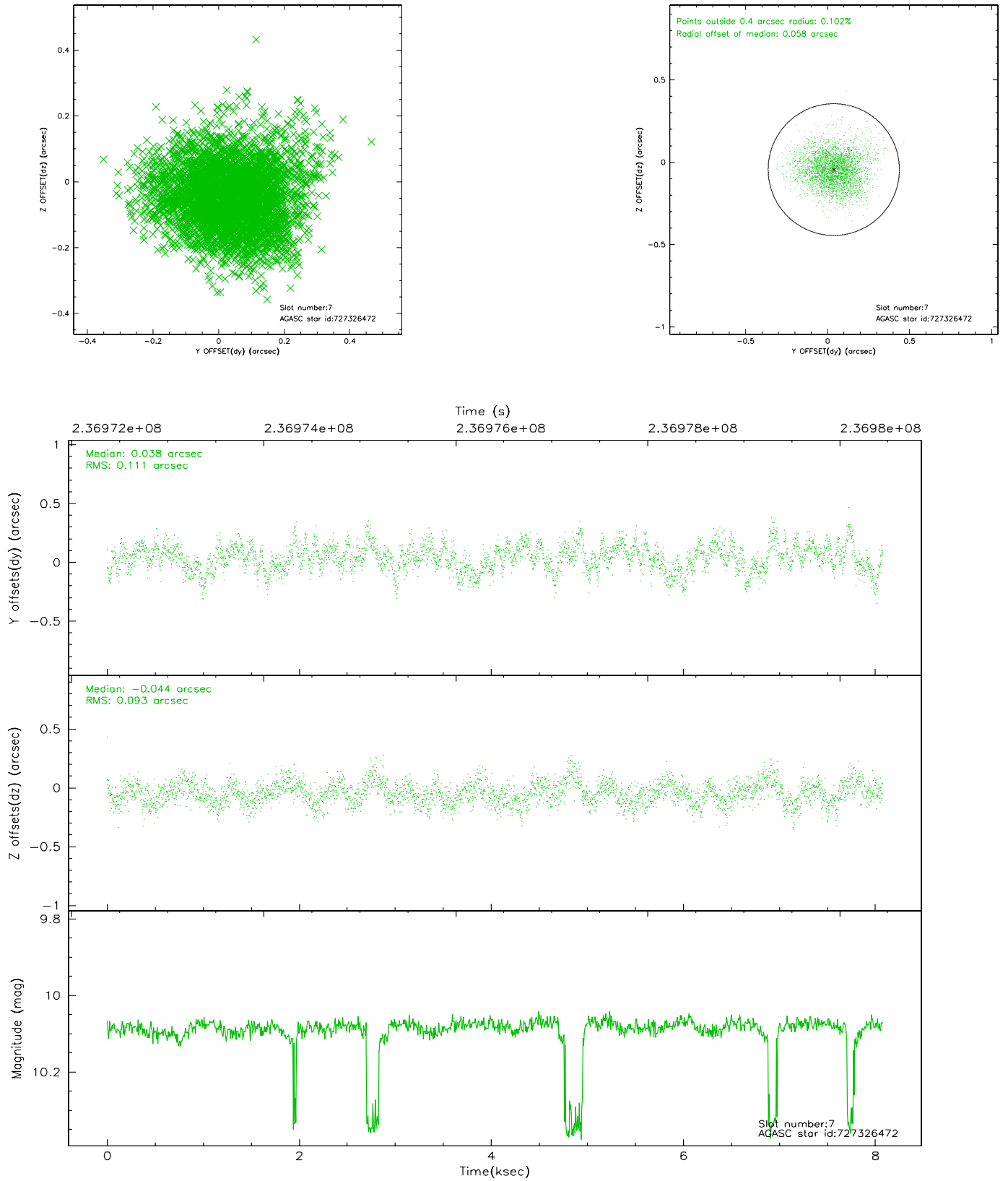
2.4.3 Slot 5



2.4.4 Slot 6

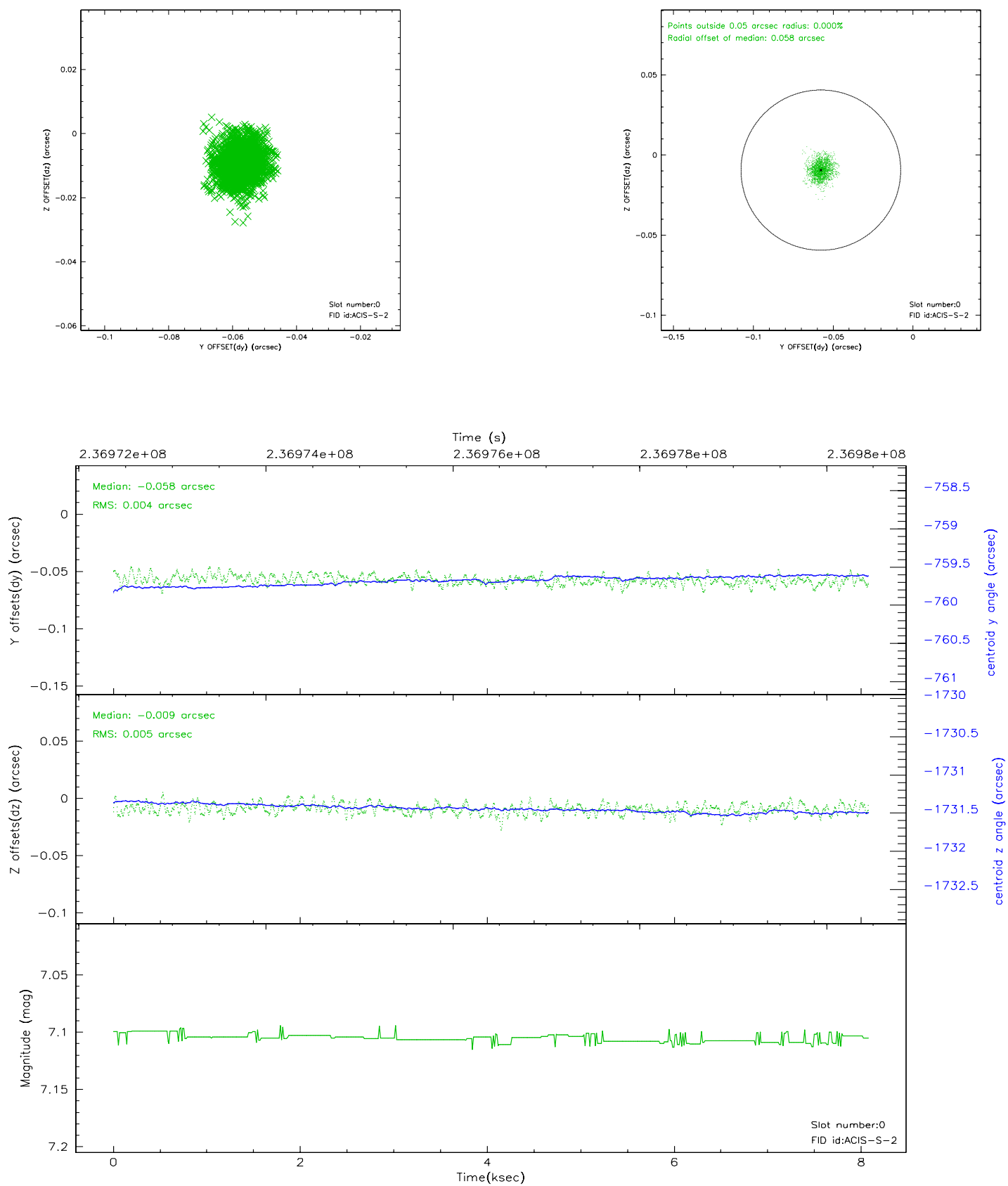


2.4.5 Slot 7

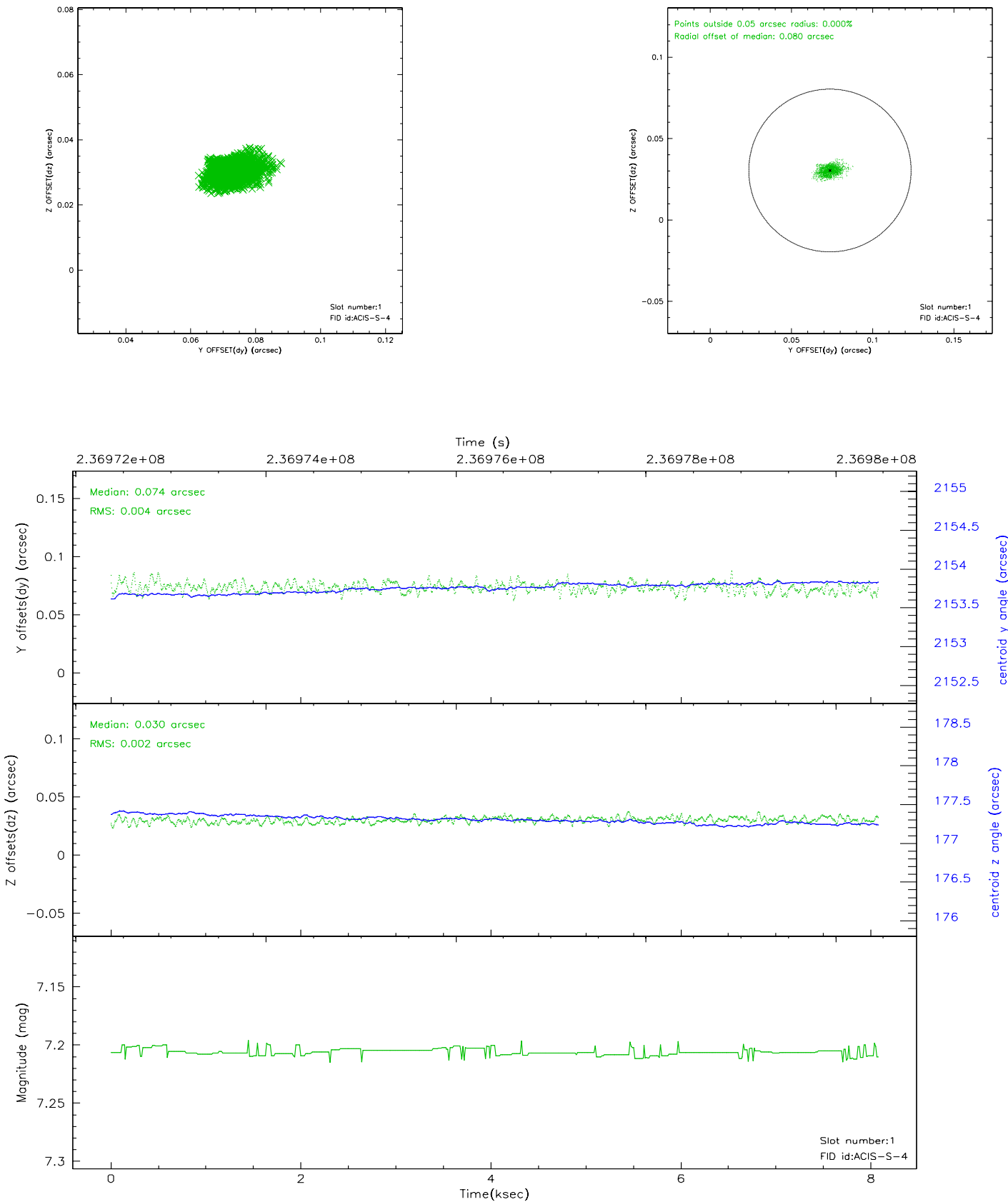


2.5 FID Slots

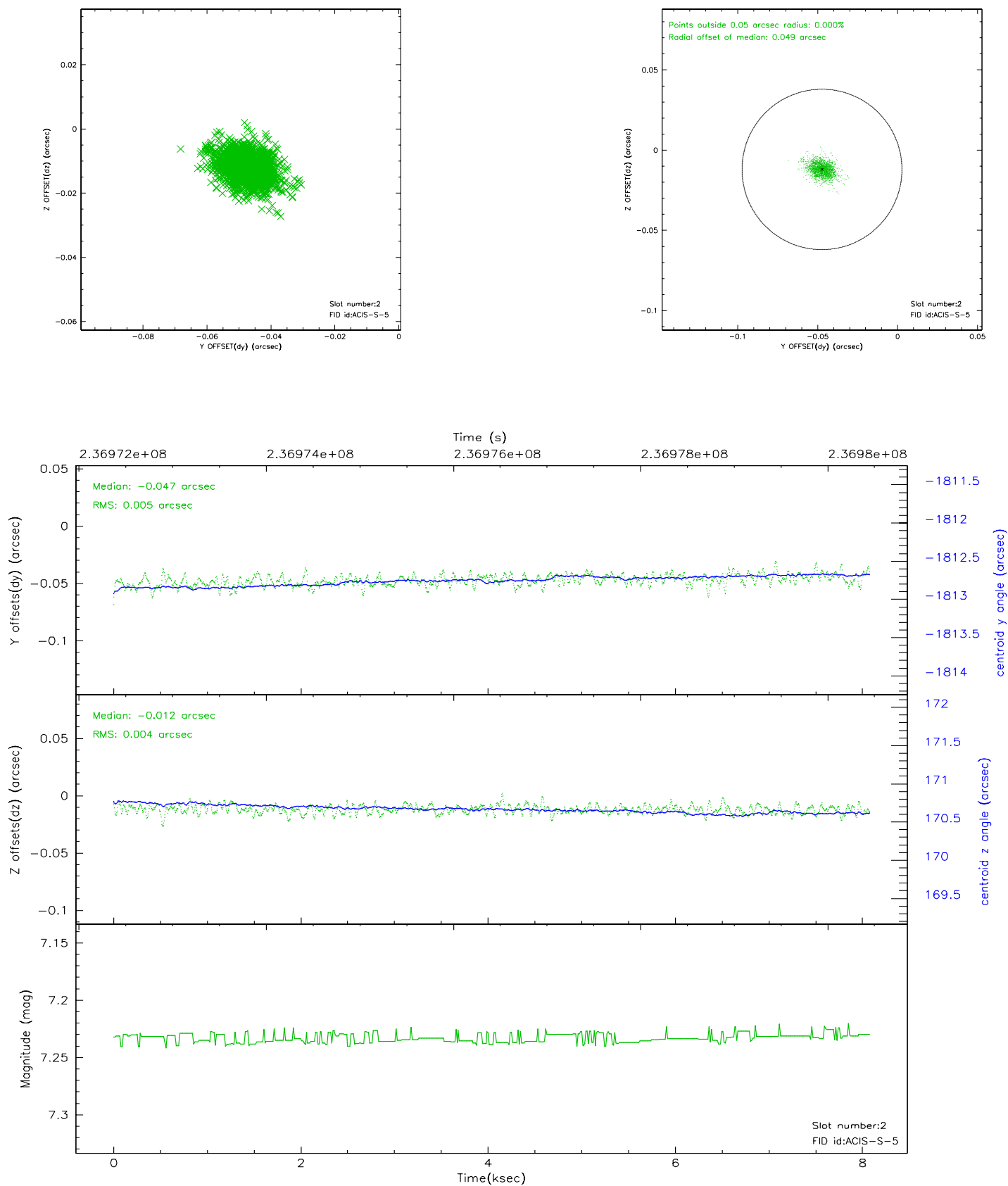
2.5.1 Slot 0



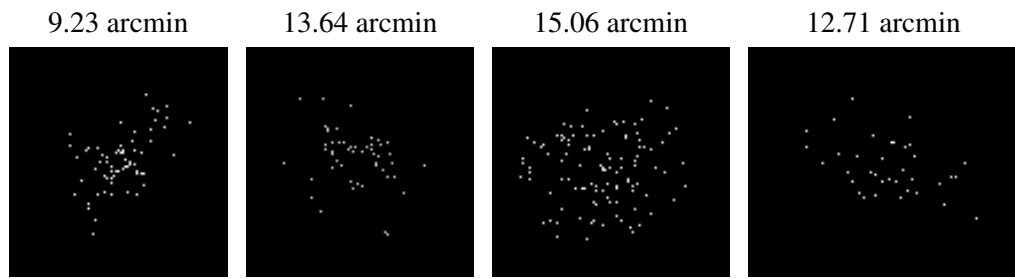
2.5.2 Slot 1



2.5.3 Slot 2



3 Point Sources



A Summary

A.1 Status

V&V Scientist	Jen Lauer
V&V Date (YYYY-MM-DD)	2006.03.14
V&V Edition	1
V&V Disposition and Status	OK
V&V Charge Time	8.076799

A.2 Comments

Window constraint met.