

V&V Reference Report

L2 ASCDS Version : 7.6.7.1

Observation 6327 - L2 Version 002
Chandra X-Ray Center

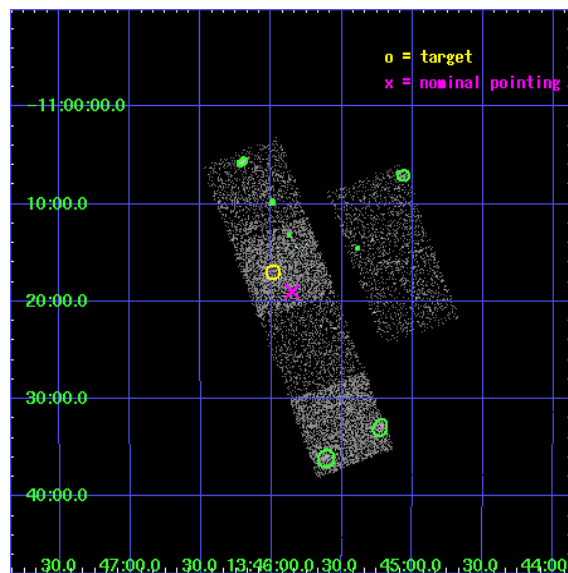
L2 Processing Date : Mar 14 2006

Contents

1	Front	2
2	OBI	3
2.1	OBI	3
2.1.1	Images	3
2.1.2	Bias	3
2.1.3	Parameters	4
2.1.4	Events	4
2.2	Compared Parameters	5
2.3	Aspect	6
2.4	Star Slots	9
2.4.1	Slot 3	9
2.4.2	Slot 4	10
2.4.3	Slot 5	11
2.4.4	Slot 6	12
2.4.5	Slot 7	13
2.5	FID Slots	14
2.5.1	Slot 0	14
2.5.2	Slot 1	15
2.5.3	Slot 2	16
3	Point Sources	17
A	Summary	18
A.1	Status	18
A.2	Comments	18

1 Front

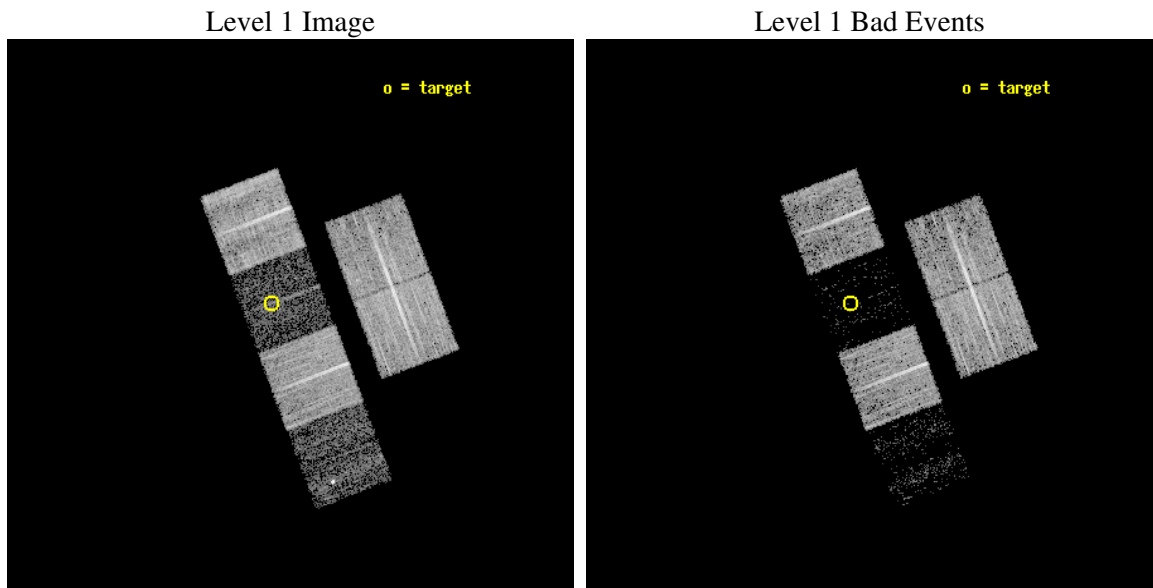
seq_num	100061
obs_id	6327
title	Comet 9P/Tempel 1 During the Deep Impact Encounter
observer	Dr. Carey Lisse
object	9P/Tempel 1
dtcycle	0
cycle	P
ra_targ	206.496187
dec_targ	-11.282931
ra_nom	206.46327758484
dec_nom	-11.31647408016
roll_nom	249.3921028126
revision	2
ontime	8435.1999685764
livetime	8328.3883875067
ontime2	8431.9589783847
ontime3	8435.1999685764
ontime5	8435.1999685764
ontime6	8435.1999685764
ontime7	8435.1999685764
ontime8	8431.9589784145
l2events	12987



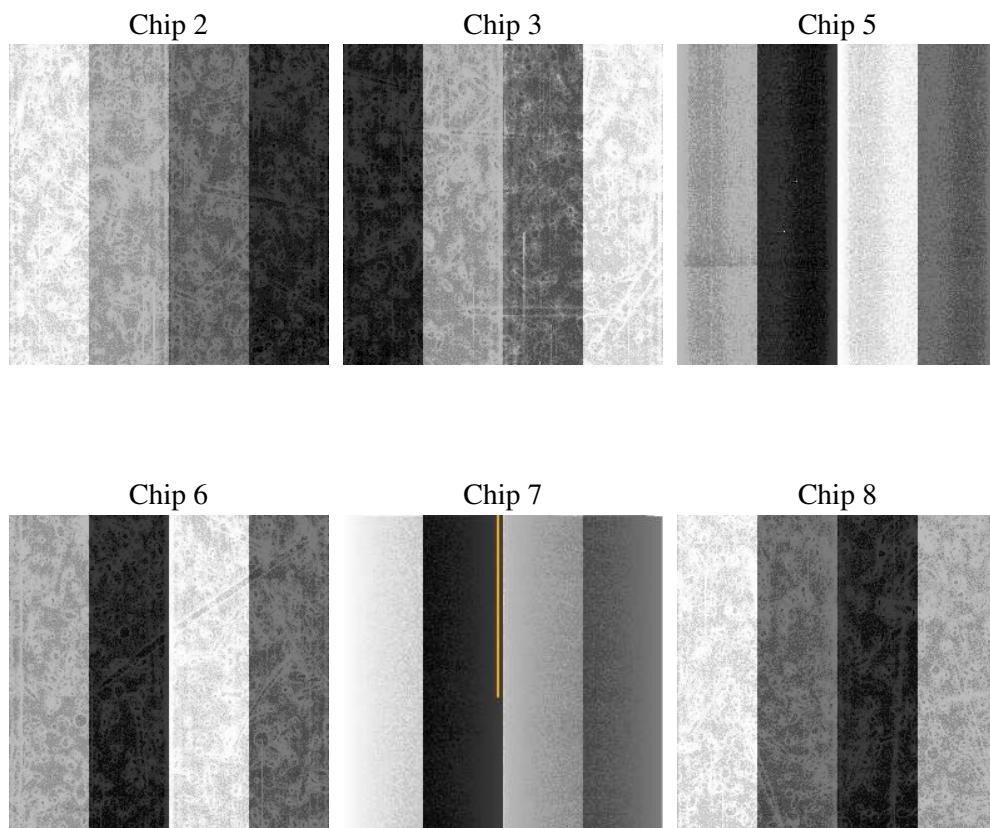
2 OBI

2.1 OBI

2.1.1 Images



2.1.2 Bias



2.1.3 Parameters

obi_num	0
ascdsver	7.6.7.1
caldbver	3.2.1
date	2006-03-14T10:01:02
revision	2

sched_exp_time	8250.000000
ontime	8760.4338104427
ontime2	8757.192800343
ontime3	8760.4337905347
ontime5	8760.4338104427
ontime6	8760.4337905347
ontime7	8760.4338104427
ontime8	8757.1928003728
l1events	181917

2.1.4 Events

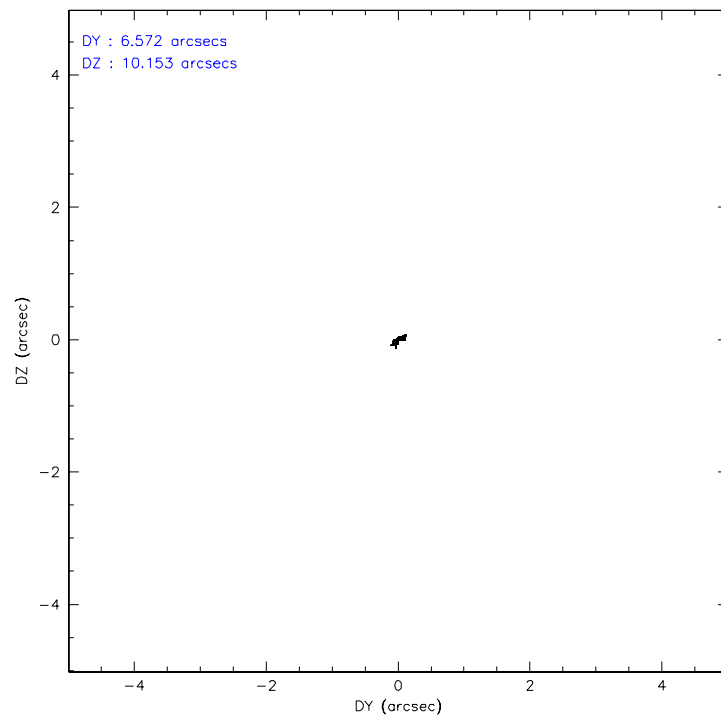
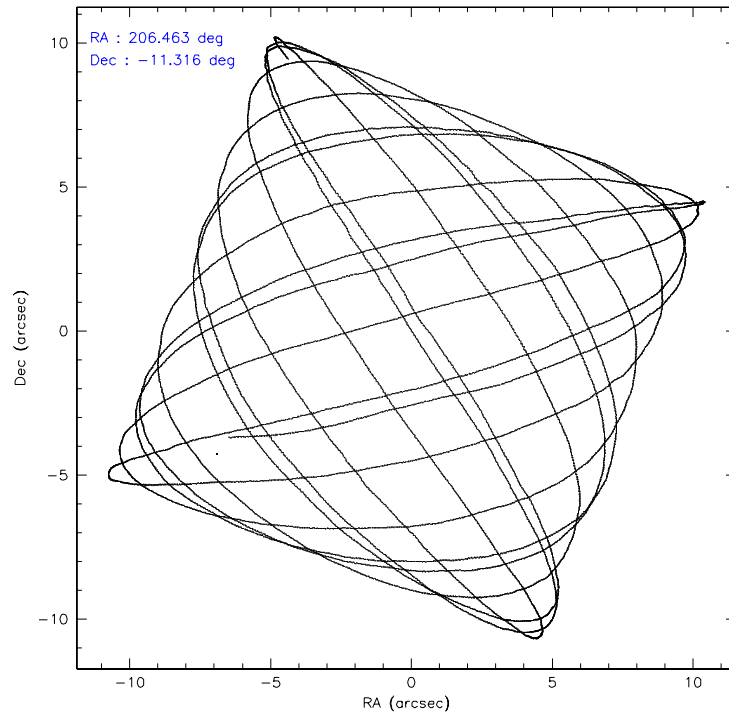
	ccd 2	ccd 3	ccd 5	ccd 6	ccd 7	ccd 8
level 1 events	46973	37321	7199	39364	5697	45363
rejected events	45107	35921	2280	37704	1195	34055
rejected %	96%	96%	31%	95%	20%	75%

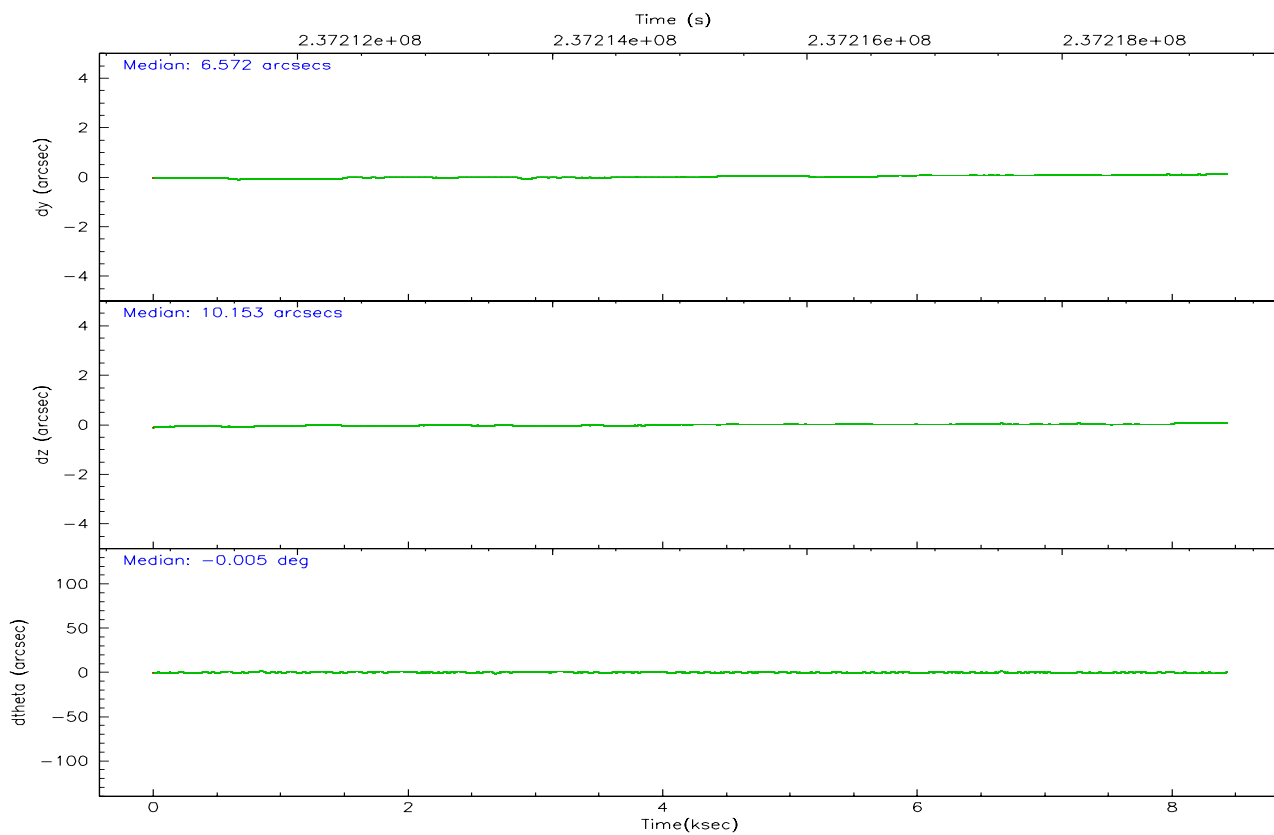
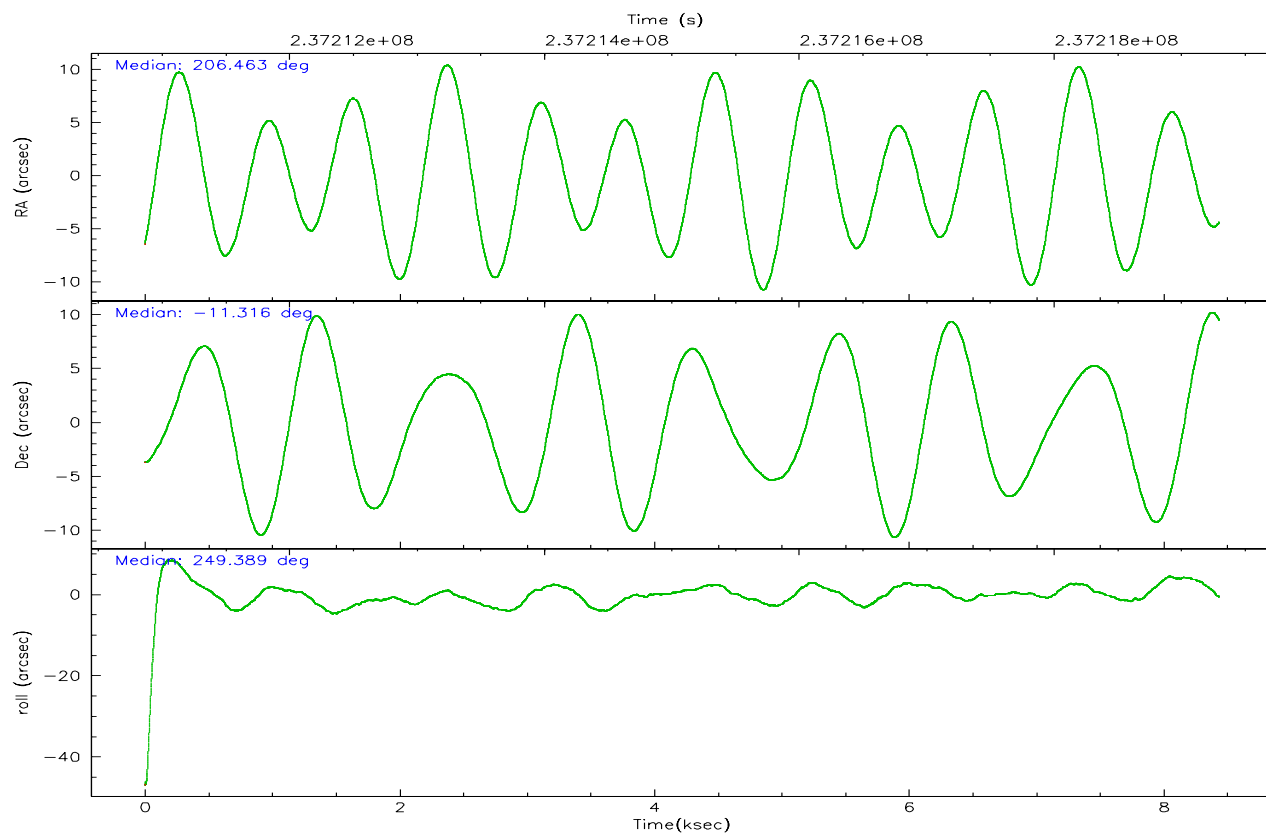
	ccd 2	ccd 3	ccd 5	ccd 6	ccd 7	ccd 8
grade 0 events	835	759	1549	817	1340	3546
	1%	2%	21%	2%	23%	7%
grade 1 events	9	10	23	20	21	34
	0%	0%	0%	0%	0%	0%
grade 2 events	437	149	1830	325	1473	2607
	0%	0%	25%	0%	25%	5%
grade 3 events	240	218	617	250	669	1390
	0%	0%	8%	0%	11%	3%
grade 4 events	235	225	548	224	638	1192
	0%	0%	7%	0%	11%	2%
grade 5 events	54	32	314	25	163	234
	0%	0%	4%	0%	2%	0%
grade 6 events	199	107	571	112	542	2950
	0%	0%	7%	0%	9%	6%
grade 7 events	44964	35821	1747	37591	851	33410
	95%	95%	24%	95%	14%	73%

2.2 Compared Parameters

Parameter	Planned	Actual	Parameter	Planned	Actual
Instrument	ACIS	ACIS	Obspar format version number	6	6
Detector	ACIS-235678	ACIS-235678	Obspar file type	PREDICTED	ACTUAL
Grating	NONE	NONE	Obspar update status	NONE	UPDATED
Data mode	VFAINT	VFAINT	On-chip summing requested	N	N
Observation mode	POINTING	POINTING	Subarray requested	NONE	NONE
Pointing RA	206.458335	206.4632775848398	Alternating exposures requested	N	N
Pointing Dec	-11.289717	-11.31647408015987	Primary exposure time	0.000000	3.2
Pointing Roll	249.234585	249.3921028126026			
SIM focus pos (mm)	-0.684267	-0.6828225247311905			
SIM defocus (mm)	0	0.001444936568705701			
SIM translation stage pos (mm)	-190.132523	-190.1400660498719			
SIM translation stage offset (mm)	0	0.00754346686406393			
Observation start time	237211047.184000	237210671.70157			
Observation start date	2005-07-08T11:56:23	2005-07-08T11:51:11			
Observation end time	237219297.184000	237219431.86447			
Observation end date	2005-07-08T14:13:53	2005-07-08T14:17:11			
Read mode	TIMED	TIMED			

2.3 Aspect



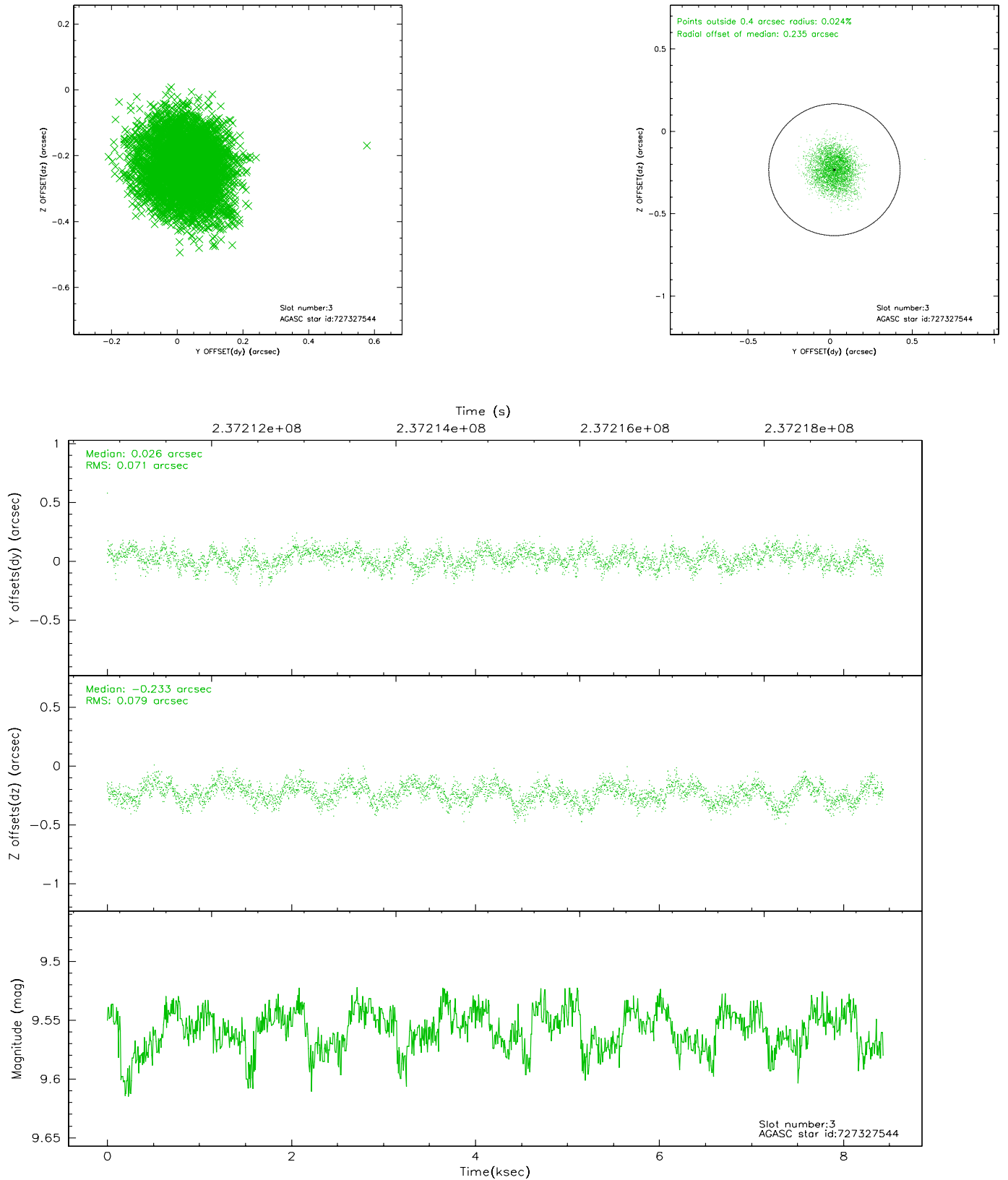


Slot Statistics

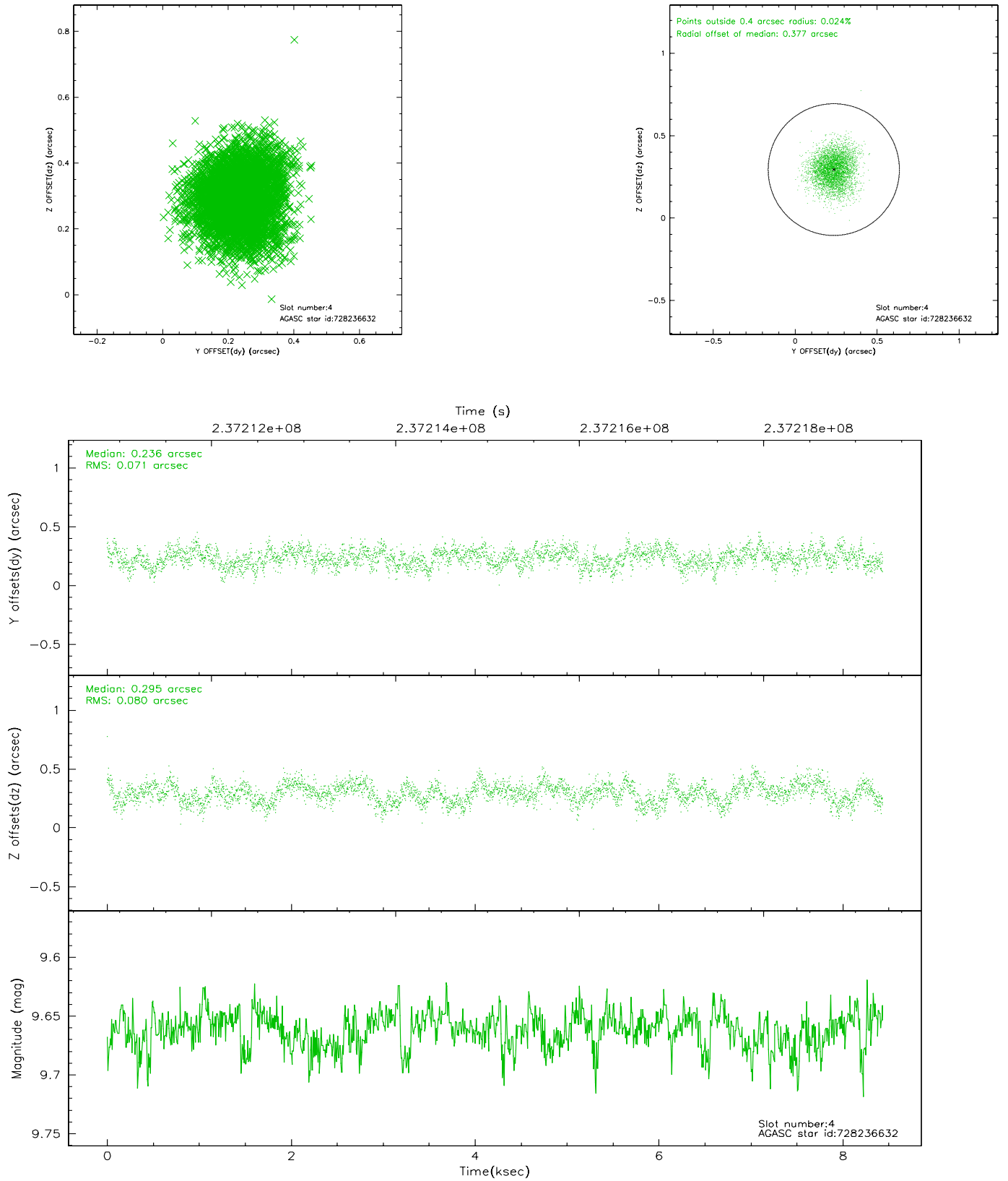
slot	status	id	mag	n_pts	med_dy	med_dz	dr1	dr2	ra	dec	mean_y	mean_z
0	FID	ACIS-S-1	7.18	2058	0.005	-0.014	0.007	0.013	0.000000	0.000000	936.71	-1727.04
1	FID	ACIS-S-5	7.24	2058	-0.039	0.004	0.005	0.009	0.000000	0.000000	-1811.96	169.86
2	FID	ACIS-S-6	7.35	2058	0.013	0.022	0.007	0.012	0.000000	0.000000	401.57	814.58
3	GUIDE	727327544	9.56	4113	0.026	-0.233	0.115	0.179	206.398747	-11.483258	726.37	50.41
4	GUIDE	728236632	9.66	4111	0.236	0.295	0.115	0.186	206.842205	-12.122561	2325.98	2327.38
5	GUIDE	728245744	8.67	4115	-0.160	0.120	0.136	0.202	206.959040	-11.284446	-642.32	1647.43
6	GUIDE	727322224	10.09	4114	0.017	-0.196	0.308	0.452	205.710123	-11.336917	1098.72	-2407.62
7	GUIDE	728237448	9.98	4109	-0.111	0.023	0.165	0.260	206.977918	-10.790049	-2331.51	1080.41

2.4 Star Slots

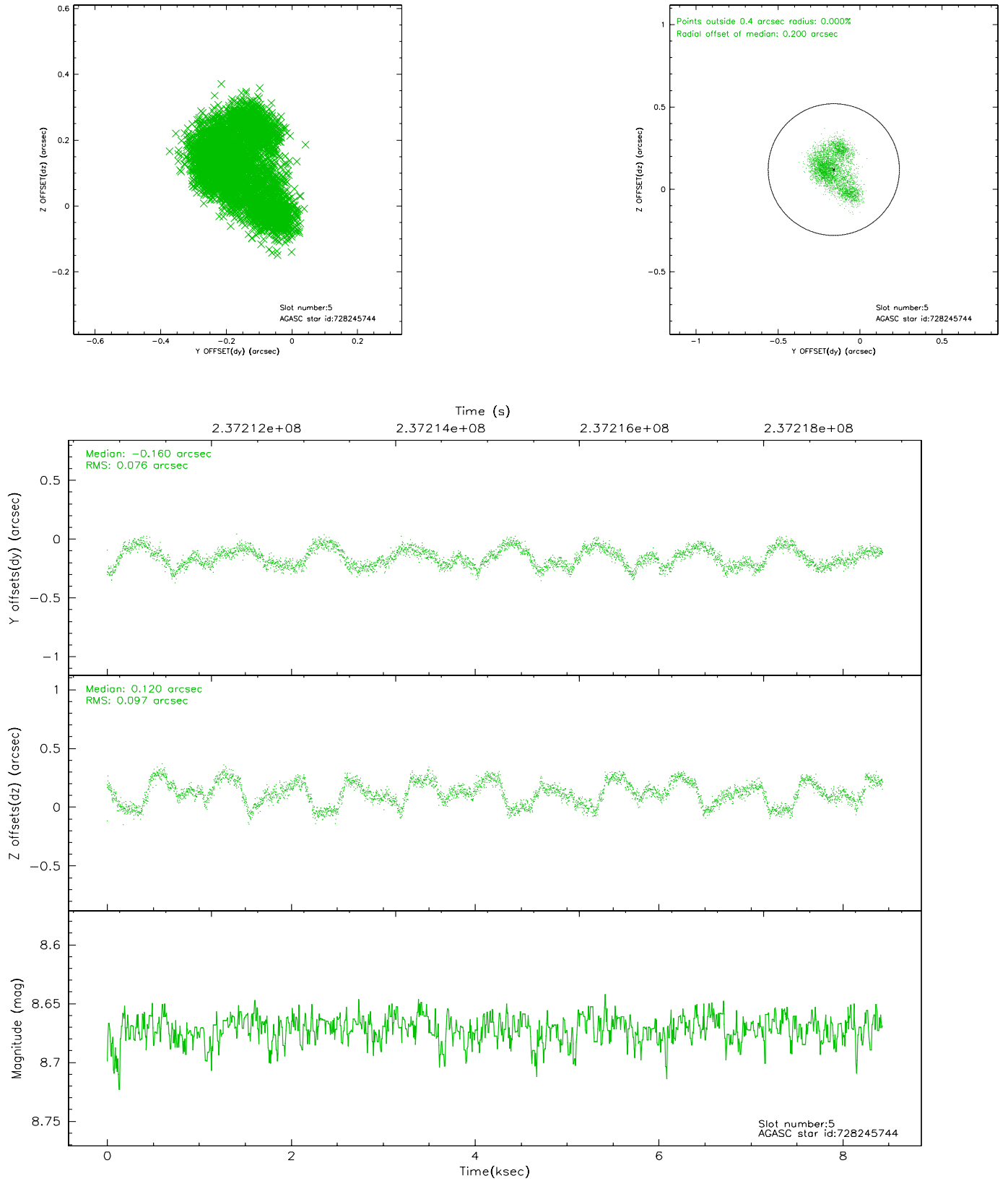
2.4.1 Slot 3



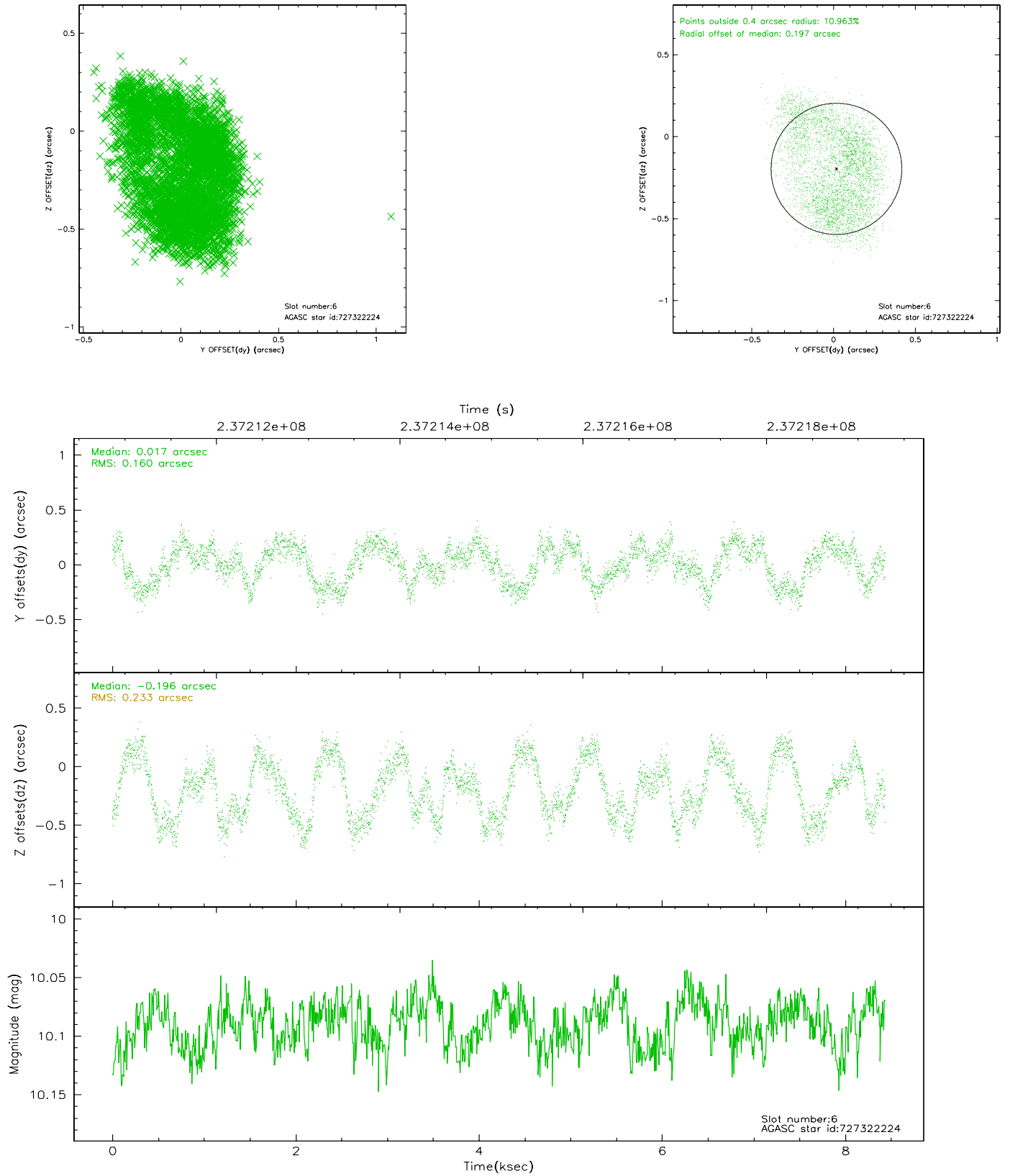
2.4.2 Slot 4



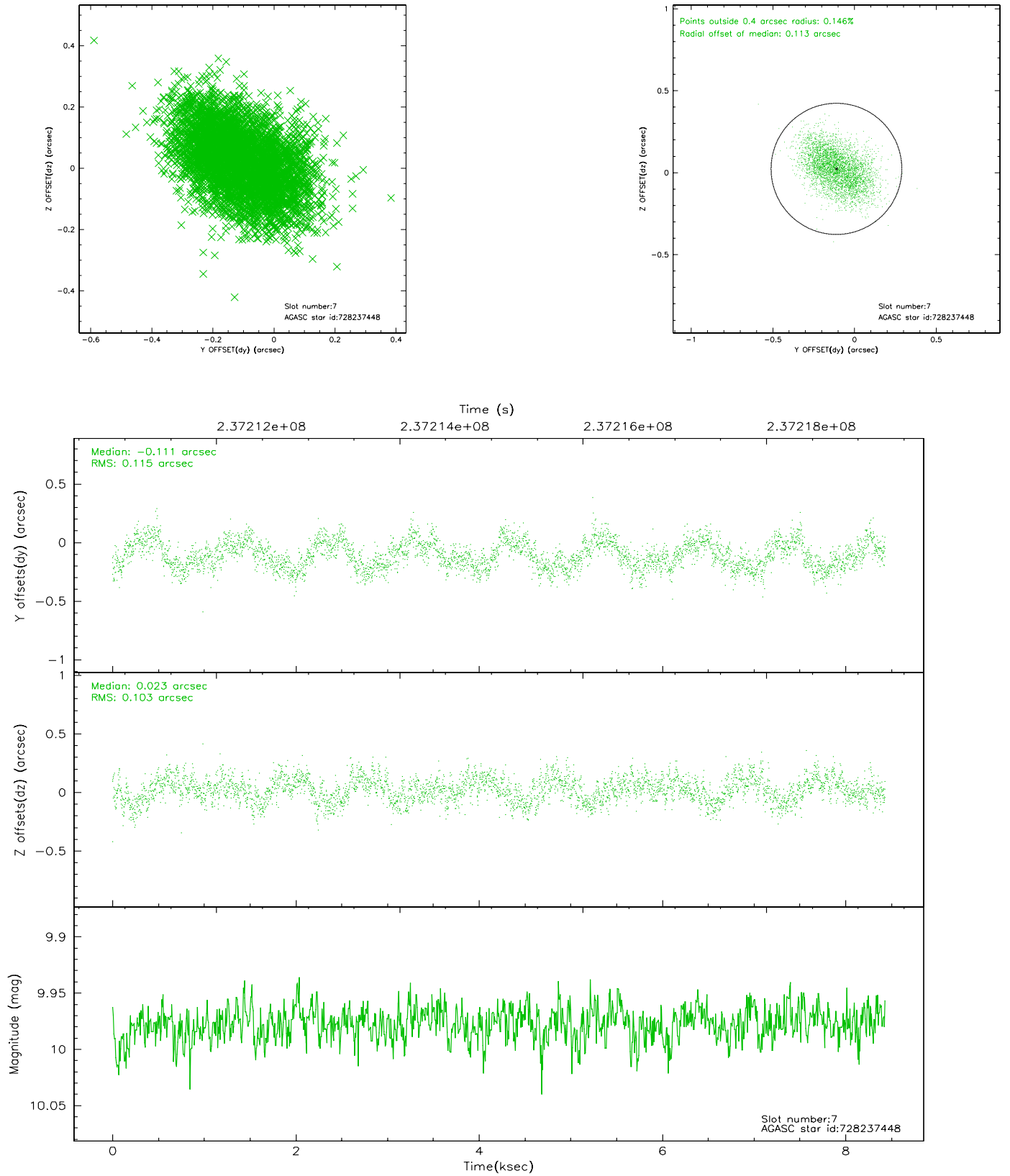
2.4.3 Slot 5



2.4.4 Slot 6

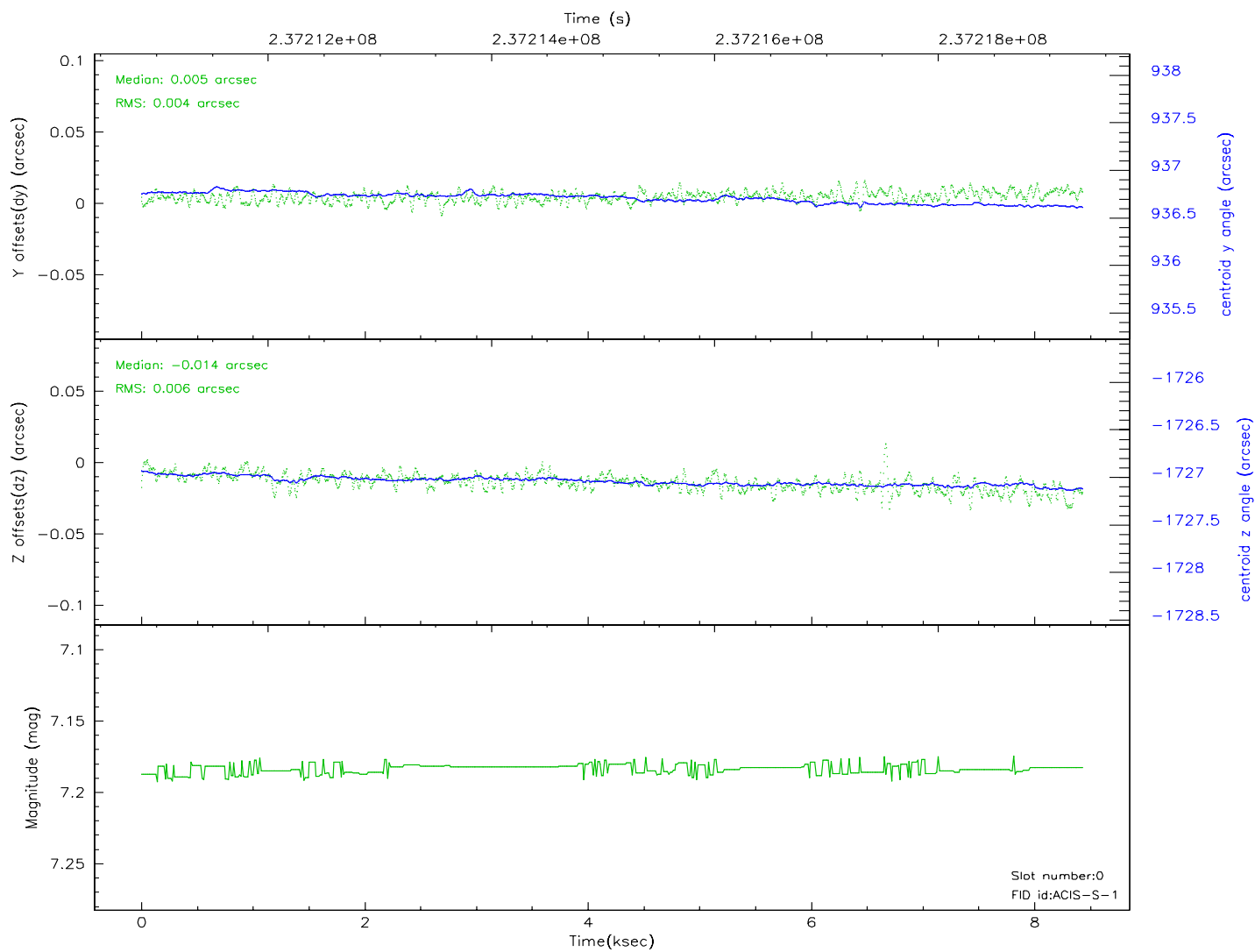
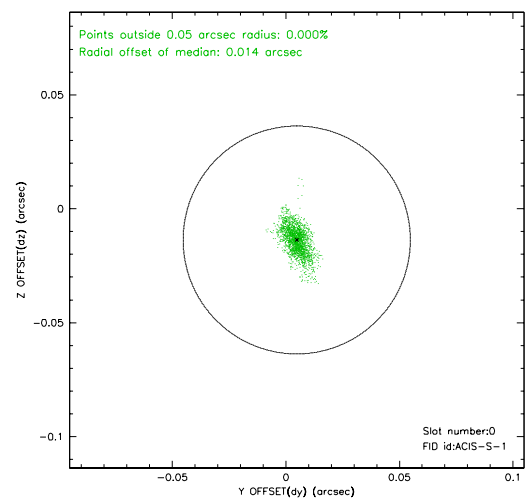
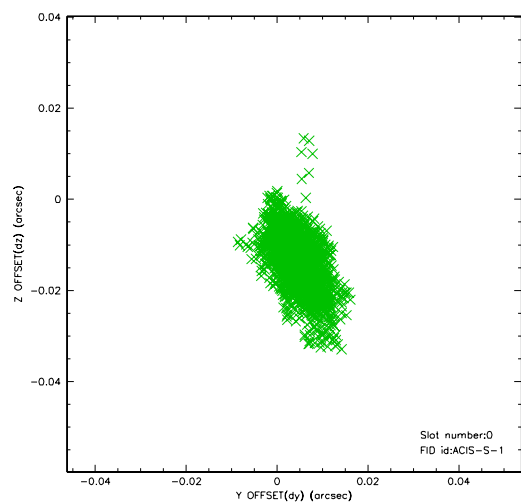


2.4.5 Slot 7

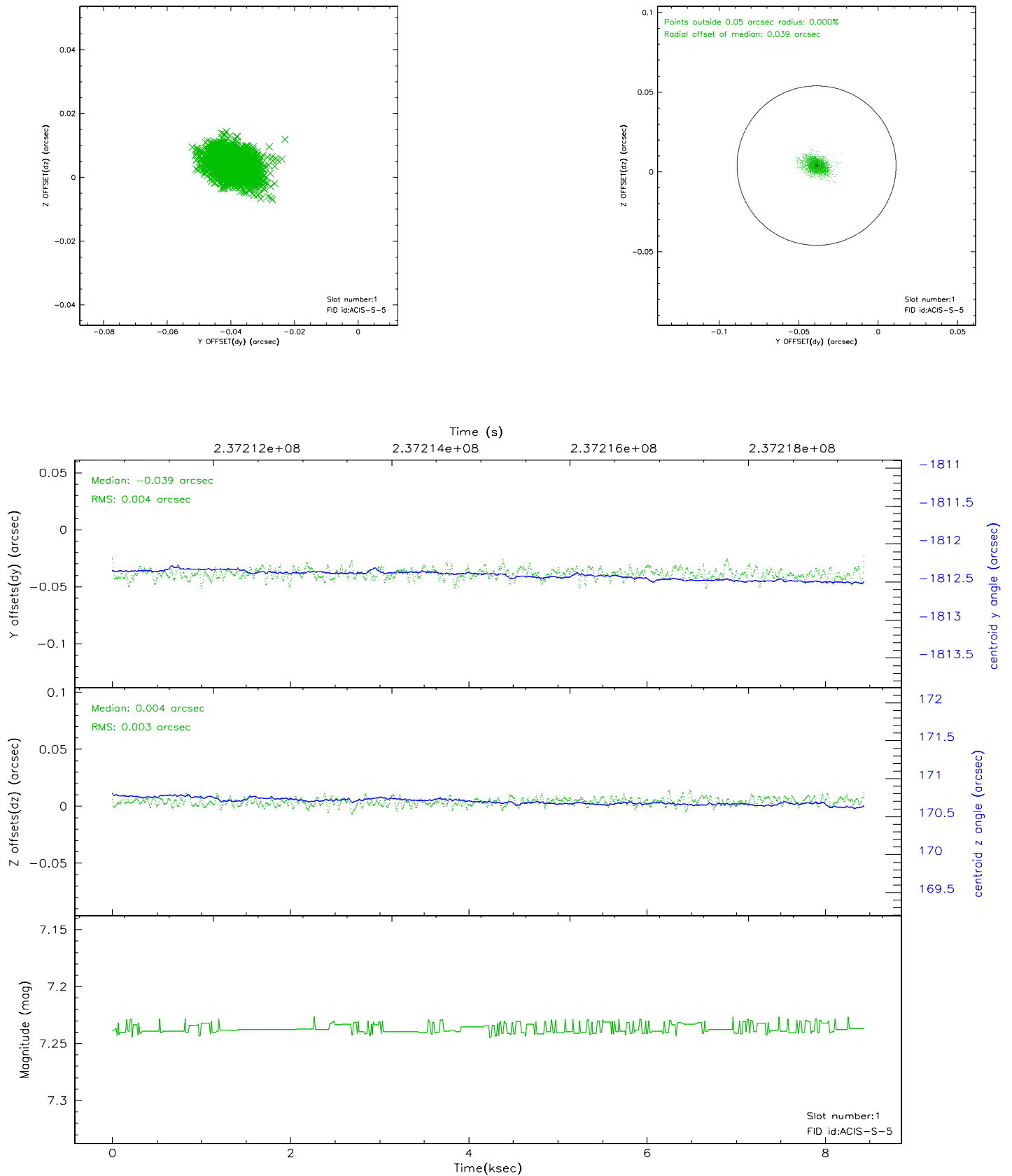


2.5 FID Slots

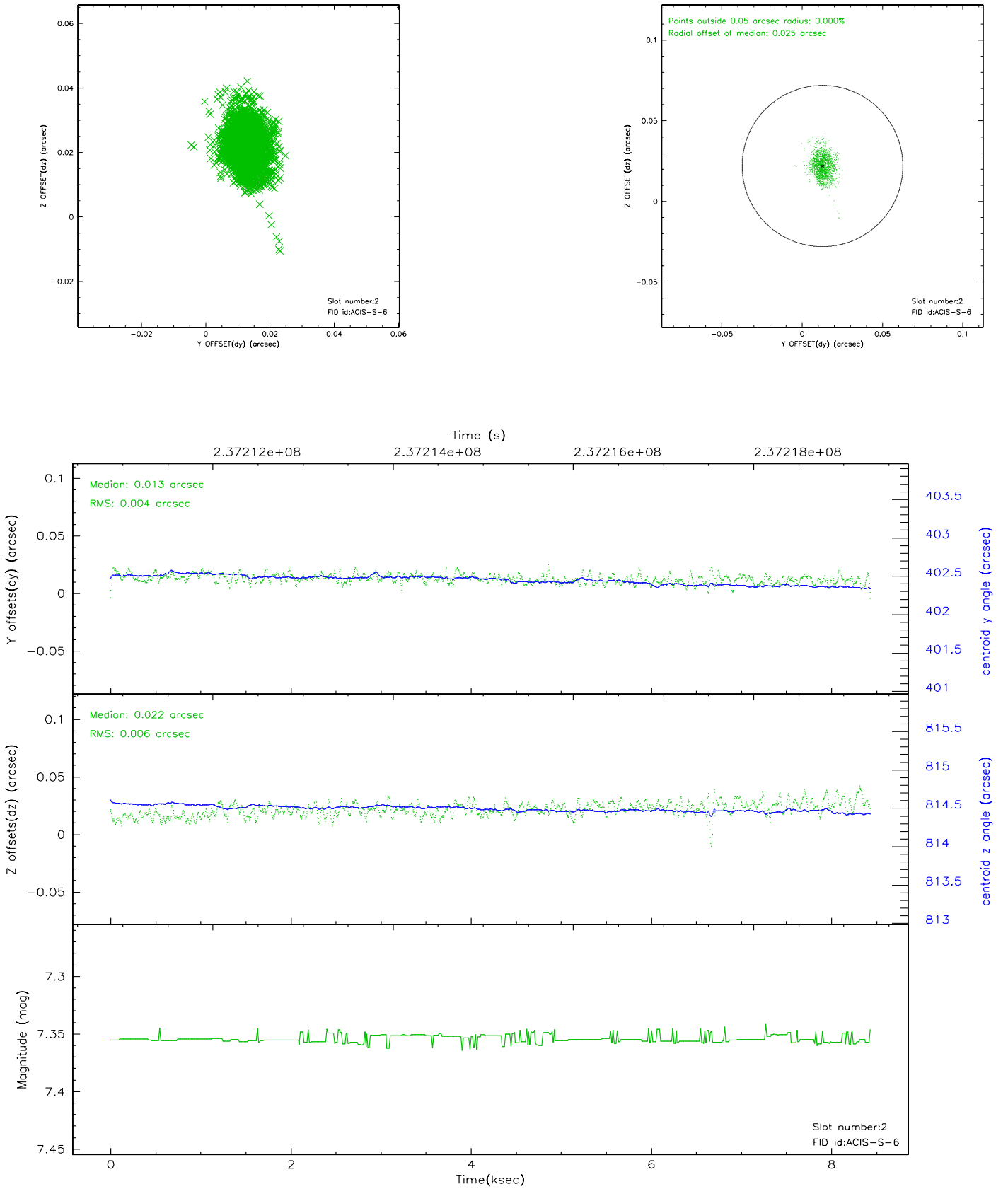
2.5.1 Slot 0



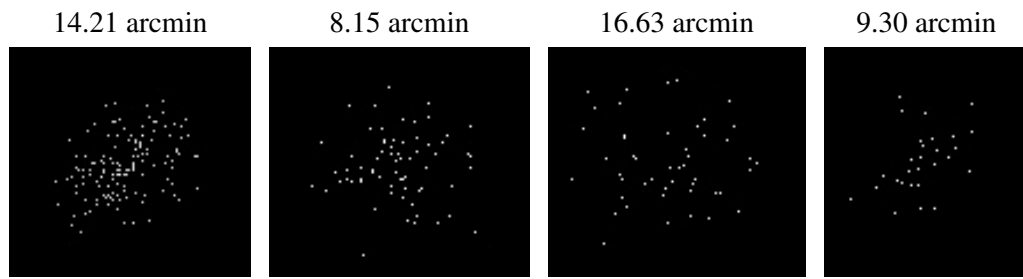
2.5.2 Slot 1



2.5.3 Slot 2



3 Point Sources



A Summary

A.1 Status

V&V Scientist	Jen Lauer
V&V Date (YYYY-MM-DD)	2006.03.14
V&V Edition	1
V&V Disposition and Status	OK
V&V Charge Time	8.435199

A.2 Comments

Comments for Obi 0

Star in slot 6 has an RMS deviation > 0.200000 arcsec

Within aspect criteria.

The ACIS focal plane temperature was above the calibration limits for the first five ksec of the observation.