

V&V Reference Report

L2 ASCDS Version : 8.5.1.1

Observation 6326 - L2 Version 3
Chandra X-Ray Center

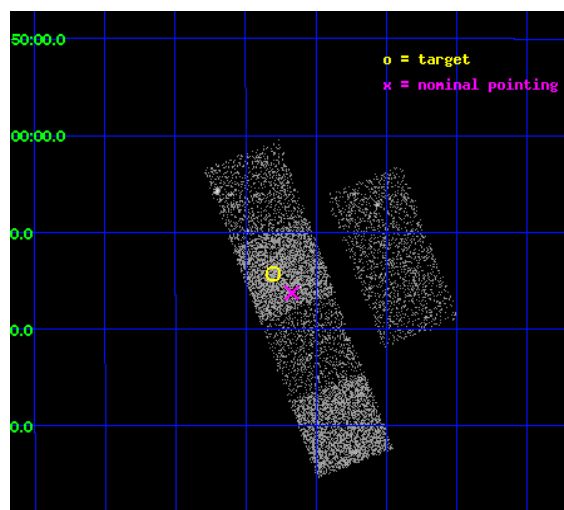
L2 Processing Date : Dec 25 2012

Contents

1	Front	2
2	OBI	3
2.1	OBI	3
2.1.1	Images	3
2.1.2	Bias	3
2.1.3	Parameters	4
2.1.4	Events	4
2.2	Compared Parameters	5
2.3	Aspect	6
2.4	Star Slots	9
2.4.1	Slot 3	9
2.4.2	Slot 4	10
2.4.3	Slot 5	11
2.4.4	Slot 6	12
2.4.5	Slot 7	13
2.5	FID Slots	14
2.5.1	Slot 0	14
2.5.2	Slot 1	15
2.5.3	Slot 2	16
A	Summary	17
A.1	Status	17
A.2	Comments	17

1 Front

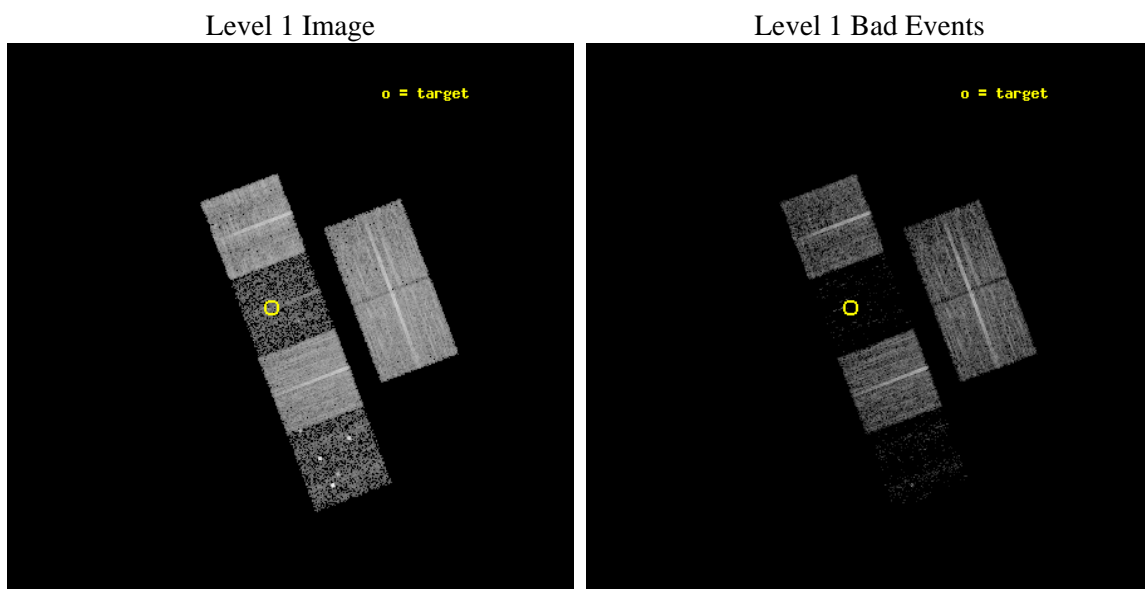
seq_num	100061	Sequence number
obs_id	6326	Observation id
title	Comet 9P/Tempel 1 During the Deep Impact Encounter	Proposal title
observer	Dr. Carey Lisse	Principal investigator
object	9P/Tempel 1	Source name
dtcycle	0	
cycle	P	events from which exps? Prim/Second/Both
ra_targ	206.450563	Observer's specified target RA [deg]
dec_targ	-11.237417	Observer's specified target Dec [deg]
ra_nom	206.41767365214	Nominal RA [deg]
dec_nom	-11.270956446016	Nominal Dec [deg]
roll_nom	249.37179875478	Nominal Roll [deg]
revision	3	Processing version of data
ontime	8210.4864826798	Sum of GTIs [s]
livetime	8106.5203590747	Livetime [s]
ontime2	8210.5275226831	Sum of GTIs [s]
ontime3	8210.3633626699	Sum of GTIs [s]
ontime5	8210.4454426765	Sum of GTIs [s]
ontime6	8210.4044026732	Sum of GTIs [s]
ontime7	8210.4864826798	Sum of GTIs [s]
ontime8	8210.3223226964	Sum of GTIs [s]
l2events	12782	Number of level 2 events



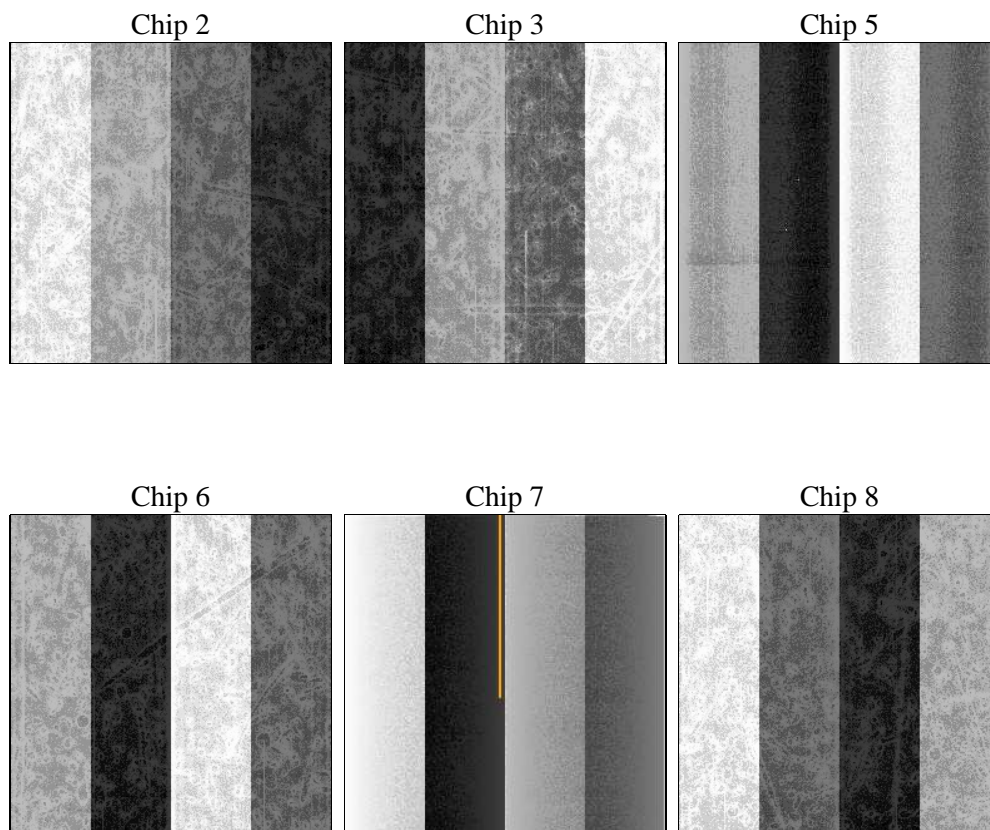
2 OBI

2.1 OBI

2.1.1 Images



2.1.2 Bias



2.1.3 Parameters

obi_num	0	Obi number	sched_exp_time	8250.000000	[s] Scheduled observation exposure time
ascdsver	8.5.1.1	Processing system revision	ontime	8210.4864826798	Sum of GTIs [s]
caldsver	4.5.5	 	ontime2	8210.5275226831	Sum of GTIs [s]
date	2012-12-25T23:38:26	Date and time of file creation	ontime3	8210.3633626699	Sum of GTIs [s]
revision	3	Processing version of data	ontime5	8210.4454426765	Sum of GTIs [s]
			ontime6	8210.4044026732	Sum of GTIs [s]
			ontime7	8210.4864826798	Sum of GTIs [s]
			ontime8	8210.3223226964	Sum of GTIs [s]
			l1events	176770	Number of level 1 events

2.1.4 Events

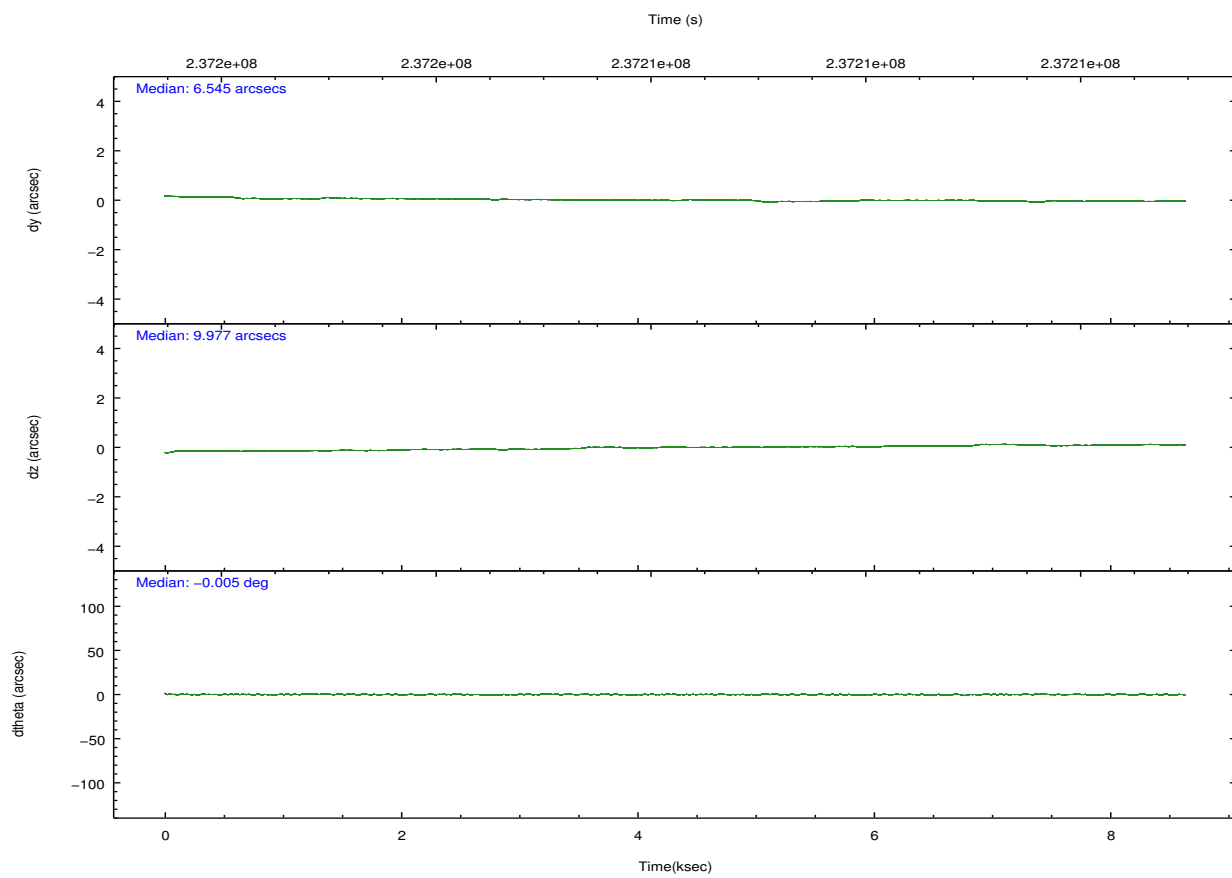
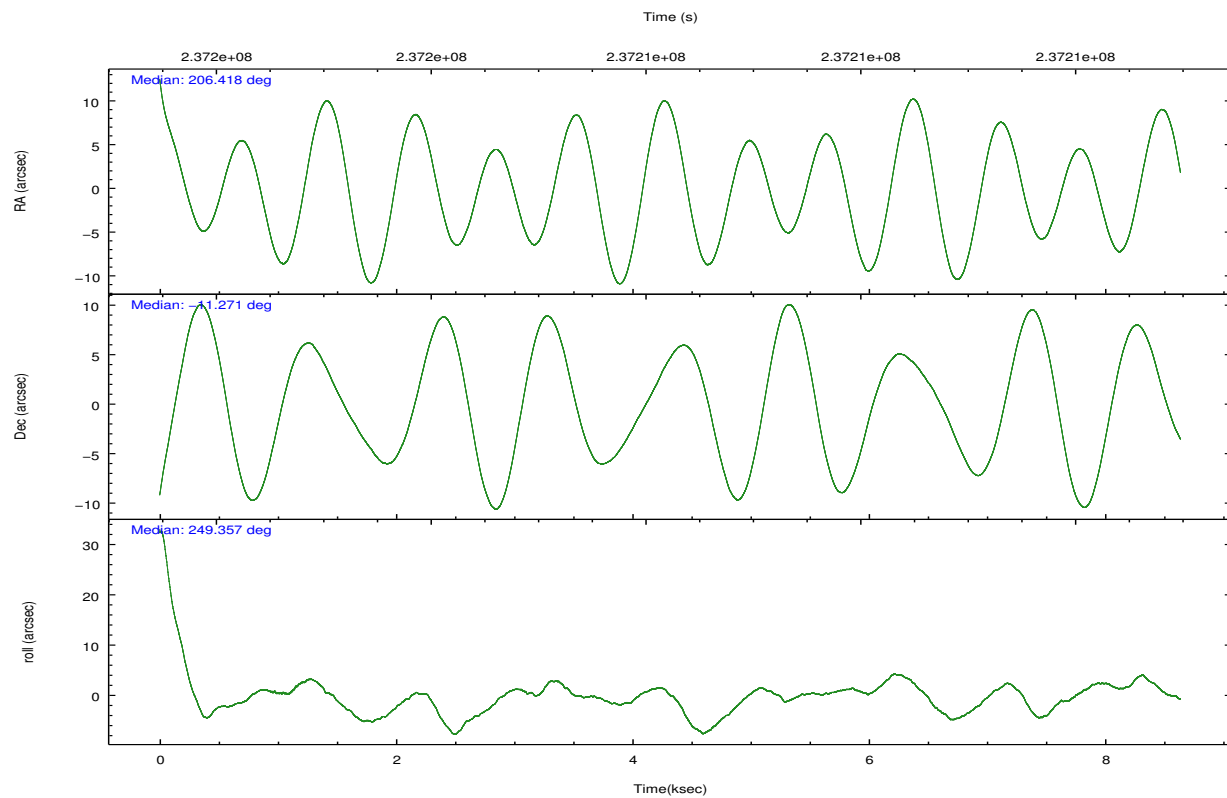
	ccd 2	ccd 3	ccd 5	ccd 6	ccd 7	ccd 8
level 1 events	43771	36804	10619	37330	5896	42350
rejected events	42012	35452	2218	35663	1150	32311
rejected %	95%	96%	20%	95%	19%	76%

	ccd 2	ccd 3	ccd 5	ccd 6	ccd 7	ccd 8
grade 0 events	763	674	3938	870	1466	2970
	1%	1%	37%	2%	24%	7%
grade 1 events	15	9	96	9	19	27
	0%	0%	0%	0%	0%	0%
grade 2 events	391	155	2885	275	1475	2371
	0%	0%	27%	0%	25%	5%
grade 3 events	206	239	587	239	659	1223
	0%	0%	5%	0%	11%	2%
grade 4 events	261	195	612	218	645	1111
	0%	0%	5%	0%	10%	2%
grade 5 events	55	27	351	26	152	195
	0%	0%	3%	0%	2%	0%
grade 6 events	170	111	498	91	562	2592
	0%	0%	4%	0%	9%	6%
grade 7 events	41910	35394	1652	35602	918	31861
	95%	96%	15%	95%	15%	75%

2.2 Compared Parameters

Parameter	Planned	Actual	Parameter	Planned	Actual
Instrument	ACIS	ACIS	Obspar format version number	7	7
Detector	ACIS-235678	ACIS-235678	Obspar file type	PREDICTED	ACTUAL
Grating	NONE	NONE	Obspar update status	NONE	UPDATED
Data mode	VFAINT	VFAINT	Number of optional ACIS chips dropped	0	0
Observation mode	POINTING	POINTING	On-chip summing requested	N	N
[deg] Pointing RA	206.412710	206.4176736521405	Subarray requested	NONE	NONE
[deg] Pointing Dec	-11.244197	-11.2709564460164	Alternating exposures requested	N	N
[deg] Pointing Roll	249.214185	249.3717987547822	[s] Primary exposure time	0.000000	3.2
[mm] SIM focus pos	-0.684267	-0.6828225247311905			
[mm] SIM defocus	0	0.001444936568705701			
[mm] SIM translation stage pos	-190.132523	-190.1400660498719			
[mm] SIM translation stage offset	0	0.00754346686406393			
[s] Observation start time (MET)	237202287.184000	237201168.41364			
Observation start date	2005-07-08T09:30:23	2005-07-08T09:12:48			
[s] Observation end time (MET)	237210537.184000	237210671.70157			
Observation end date	2005-07-08T11:47:53	2005-07-08T11:51:11			
Read mode	TIMED	TIMED			

2.3 Aspect

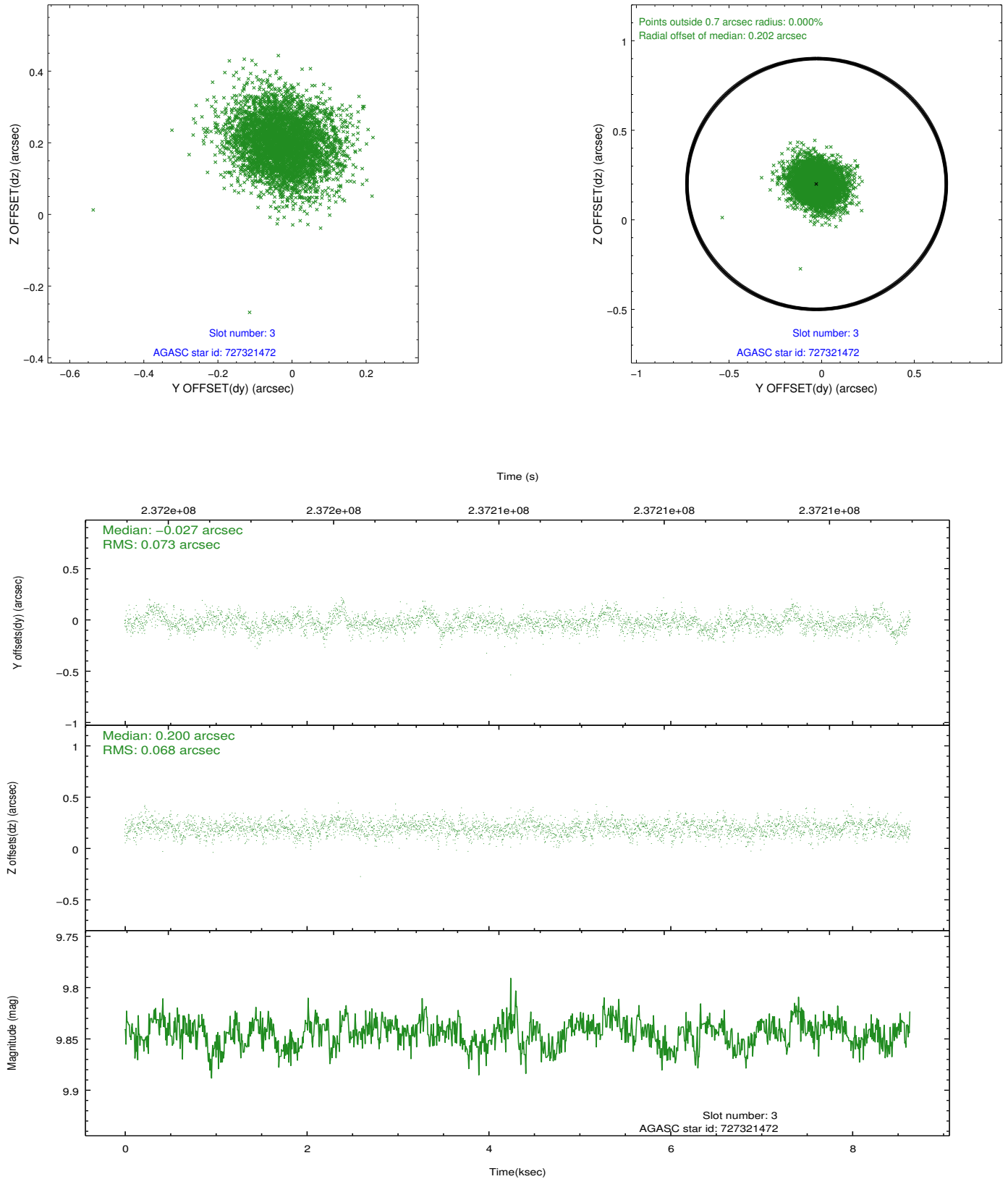


Slot Statistics

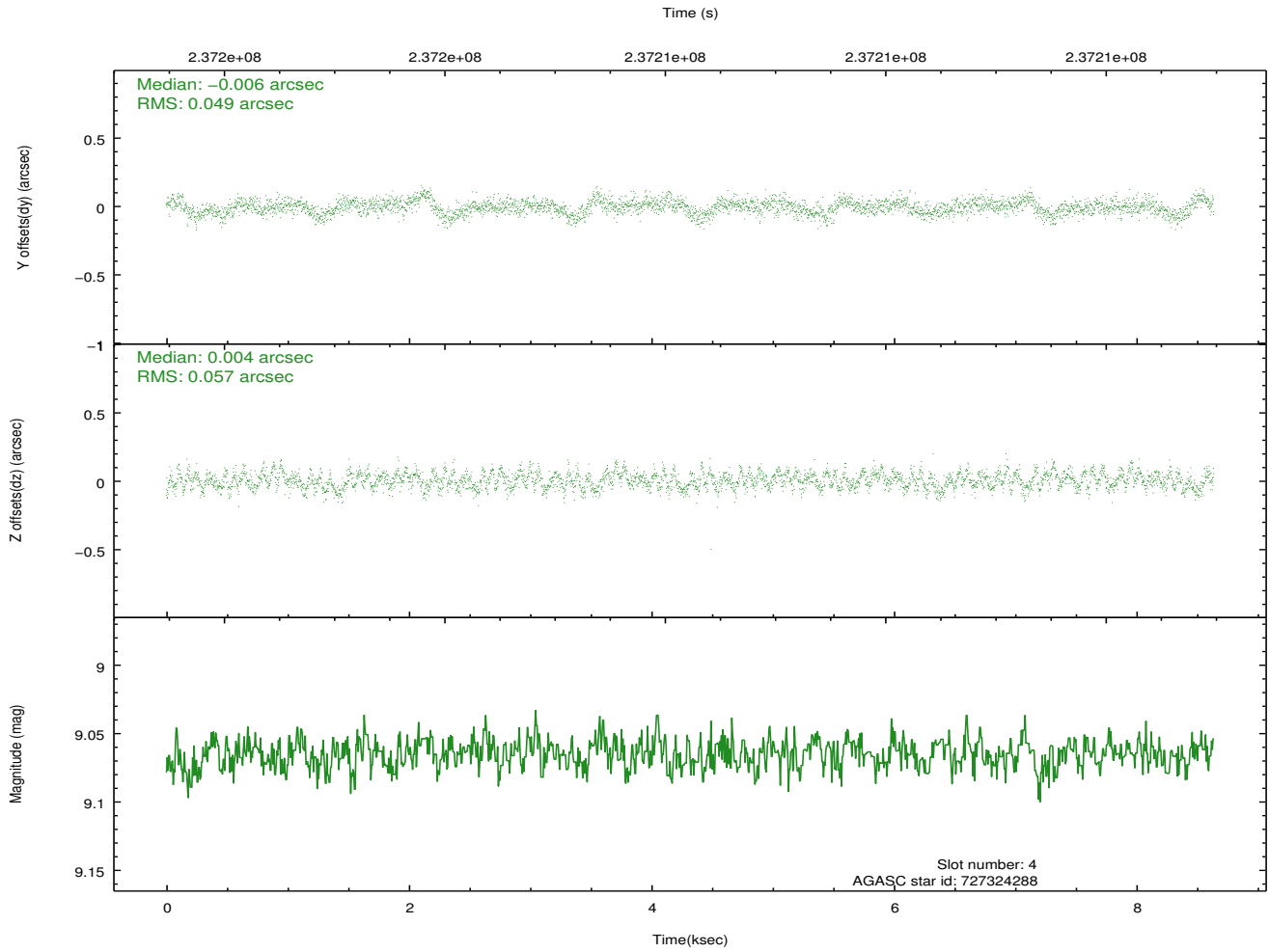
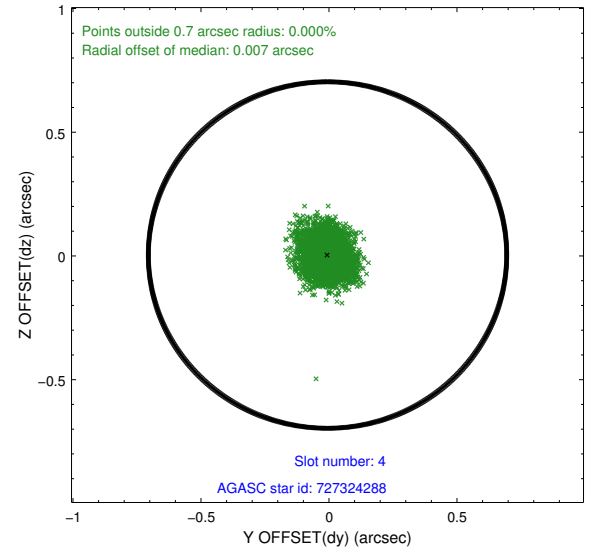
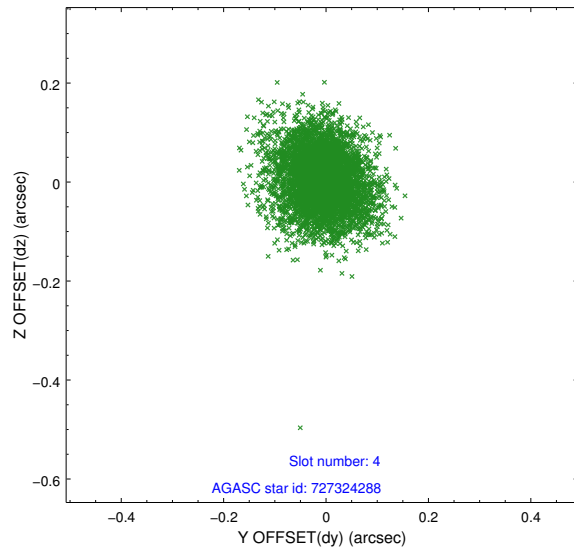
slot	status	id	mag	n_pts	med_dy	med_dz	dr1	dr2	ra	dec	mean_y	mean_z
0	FID	ACIS-S-2	7.11	2107	-0.069	-0.031	0.007	0.012	0.000000	0.000000	-759.34	-1731.25
1	FID	ACIS-S-4	7.21	2107	0.106	0.041	0.006	0.010	0.000000	0.000000	2153.79	176.70
2	FID	ACIS-S-5	7.23	2107	-0.069	-0.002	0.007	0.012	0.000000	0.000000	-1811.39	170.99
3	GUIDE	727321472	9.84	4210	-0.027	0.200	0.106	0.175	206.729745	-11.411859	168.33	1260.45
4	GUIDE	727324288	9.07	4214	-0.006	0.004	0.079	0.129	206.082018	-11.172416	174.60	-1183.19
5	GUIDE	727327544	9.56	4210	0.110	-0.193	0.122	0.192	206.398747	-11.483258	822.79	259.01
6	GUIDE	728245744	8.67	4214	-0.152	0.167	0.066	0.107	206.959040	-11.284446	-547.08	1855.24
7	GUIDE	727322224	10.13	4206	0.075	-0.180	0.151	0.247	205.710123	-11.336917	1196.10	-2198.57

2.4 Star Slots

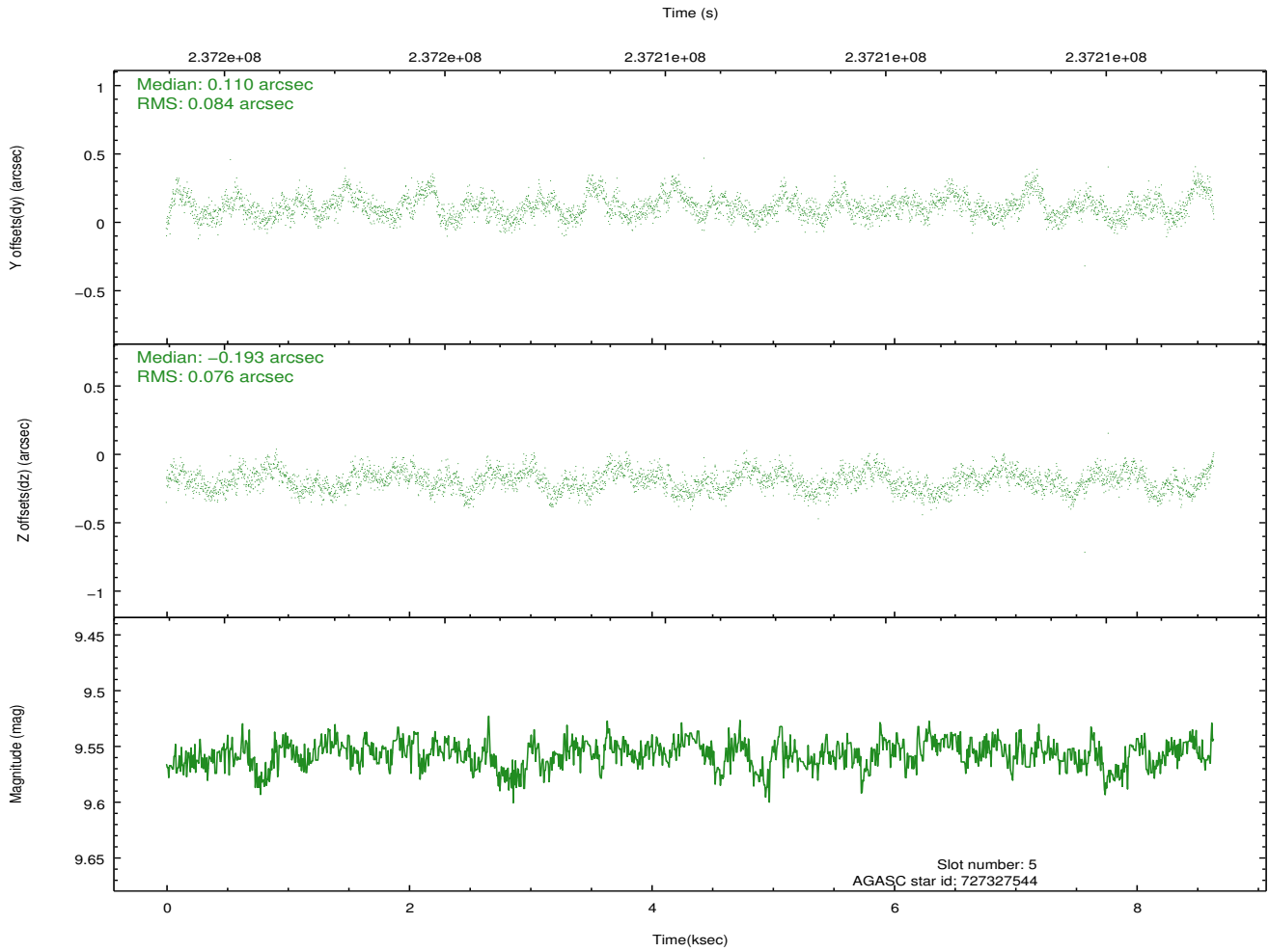
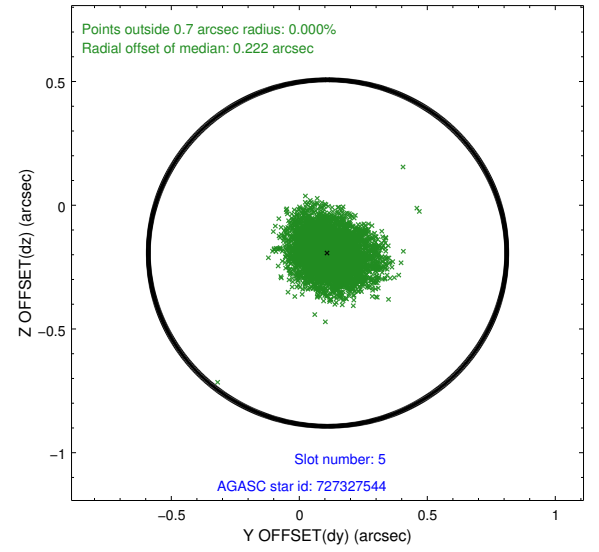
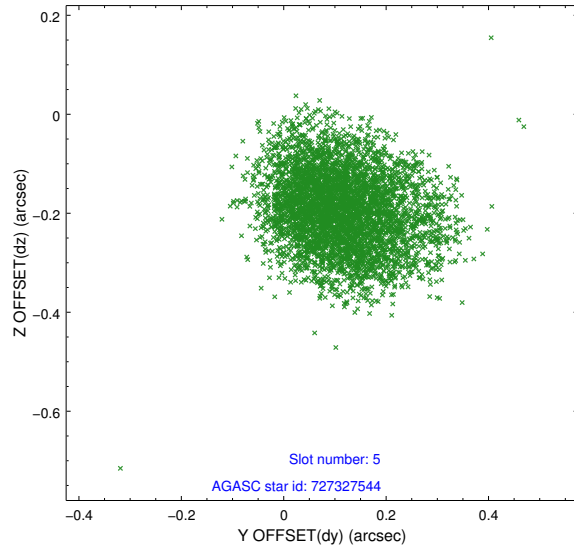
2.4.1 Slot 3



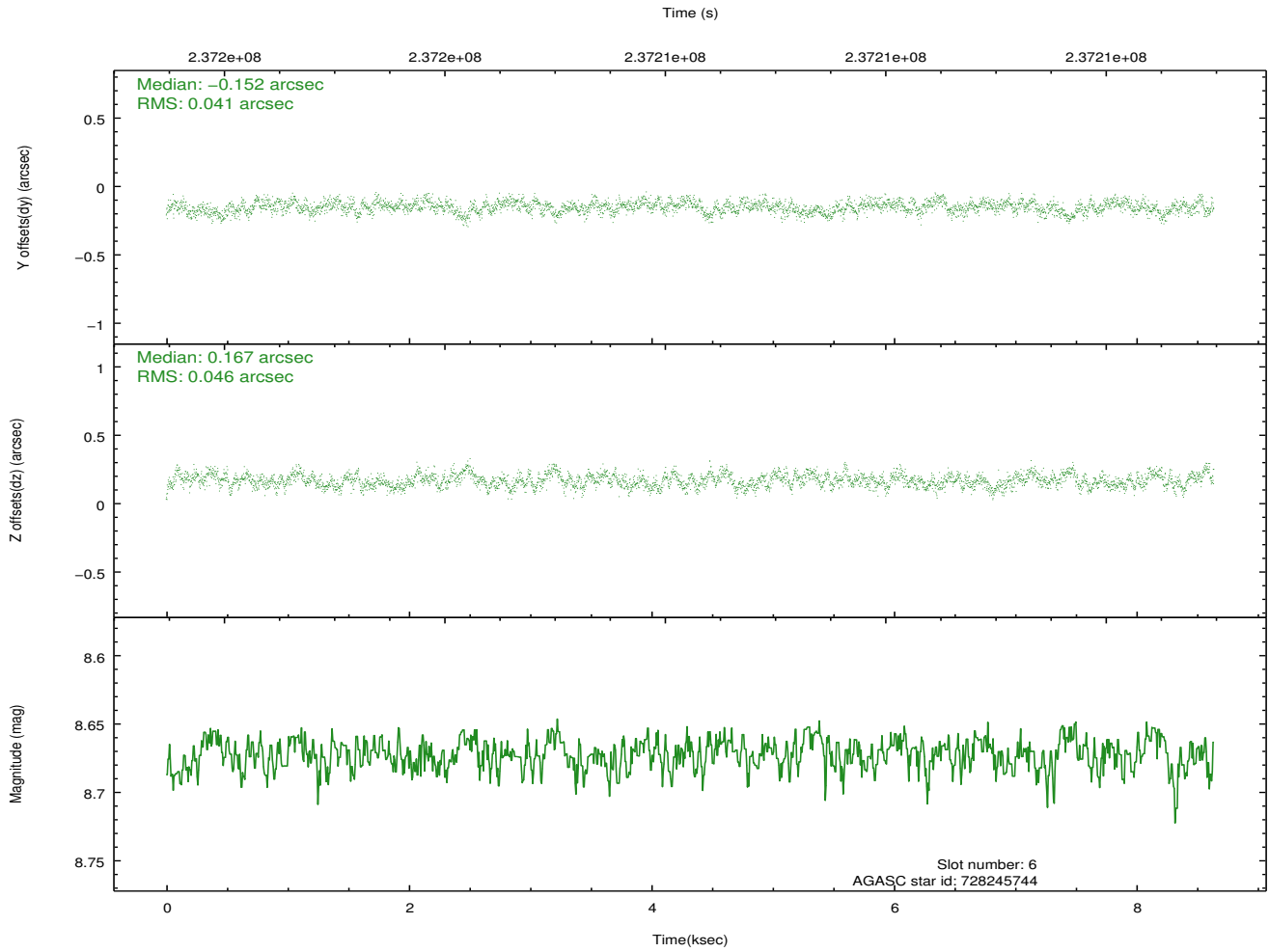
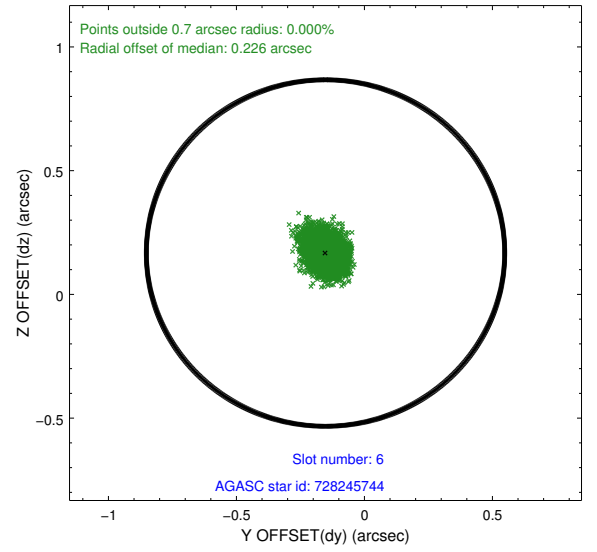
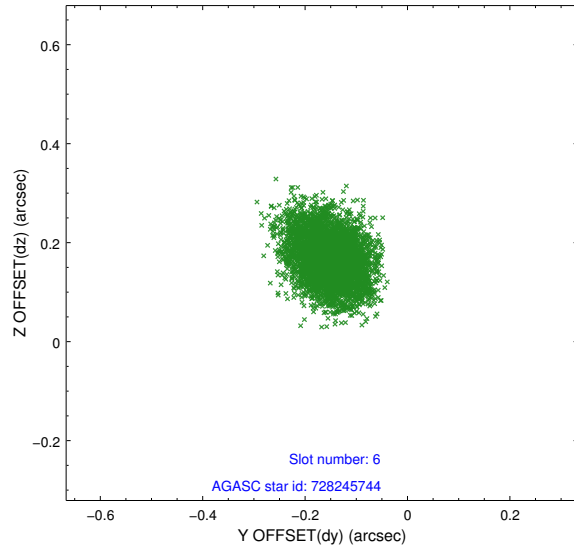
2.4.2 Slot 4



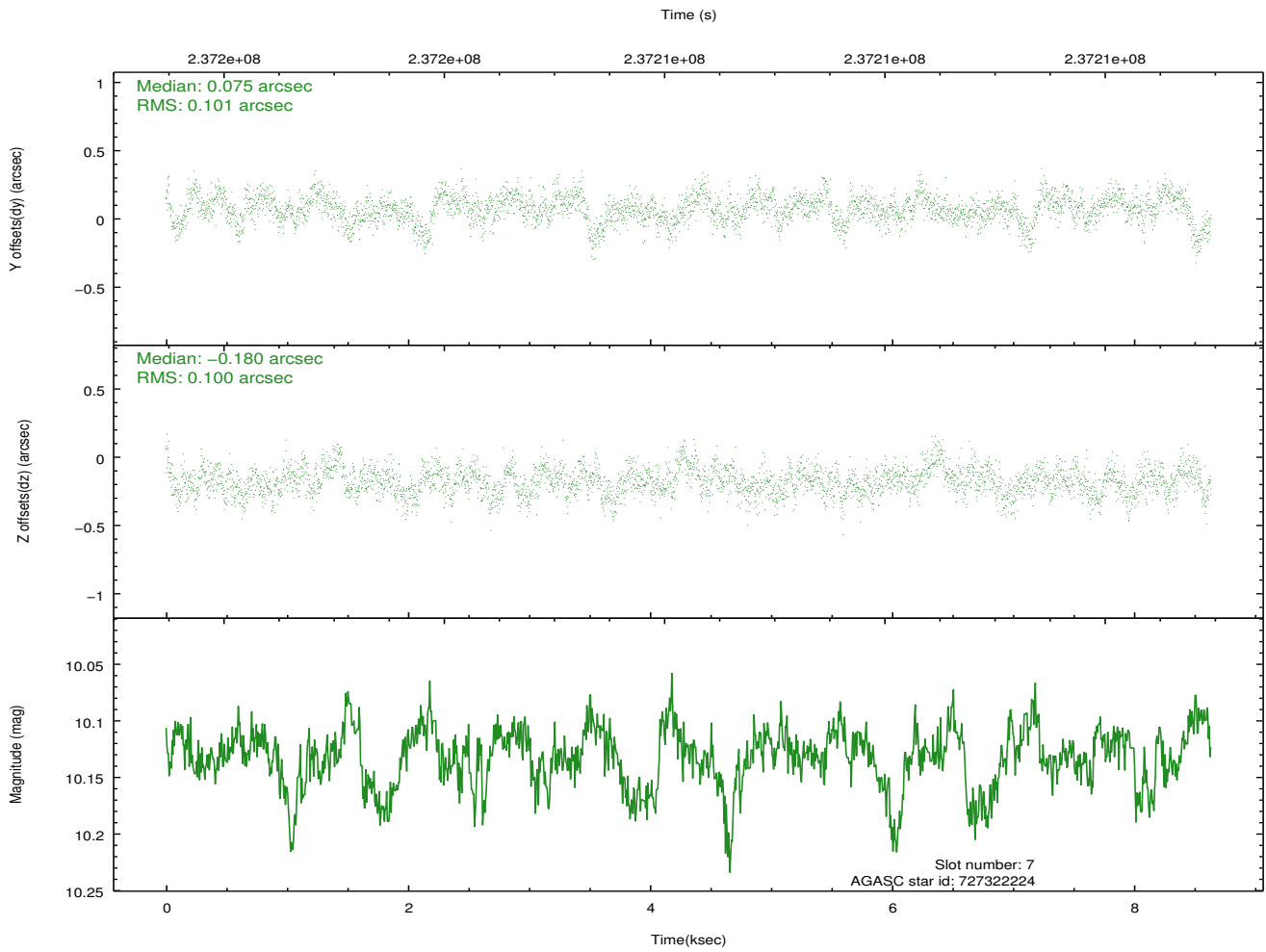
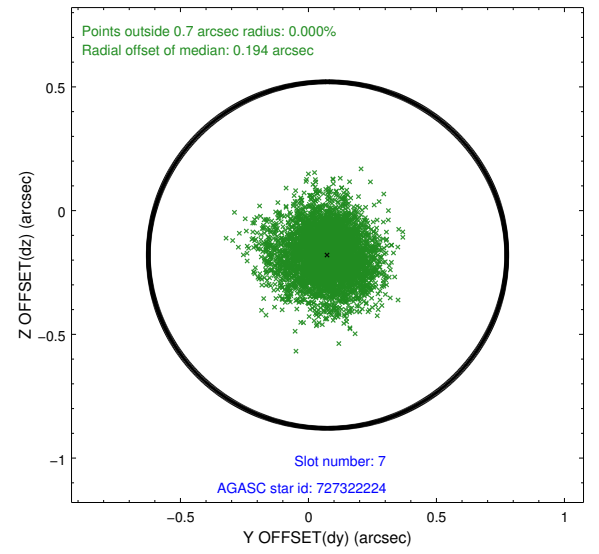
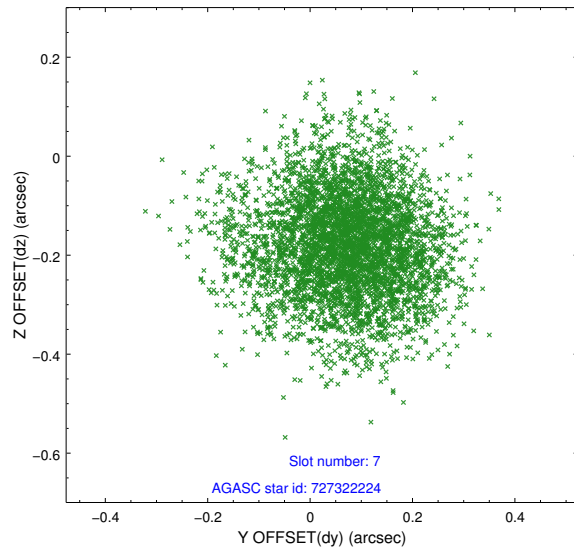
2.4.3 Slot 5



2.4.4 Slot 6

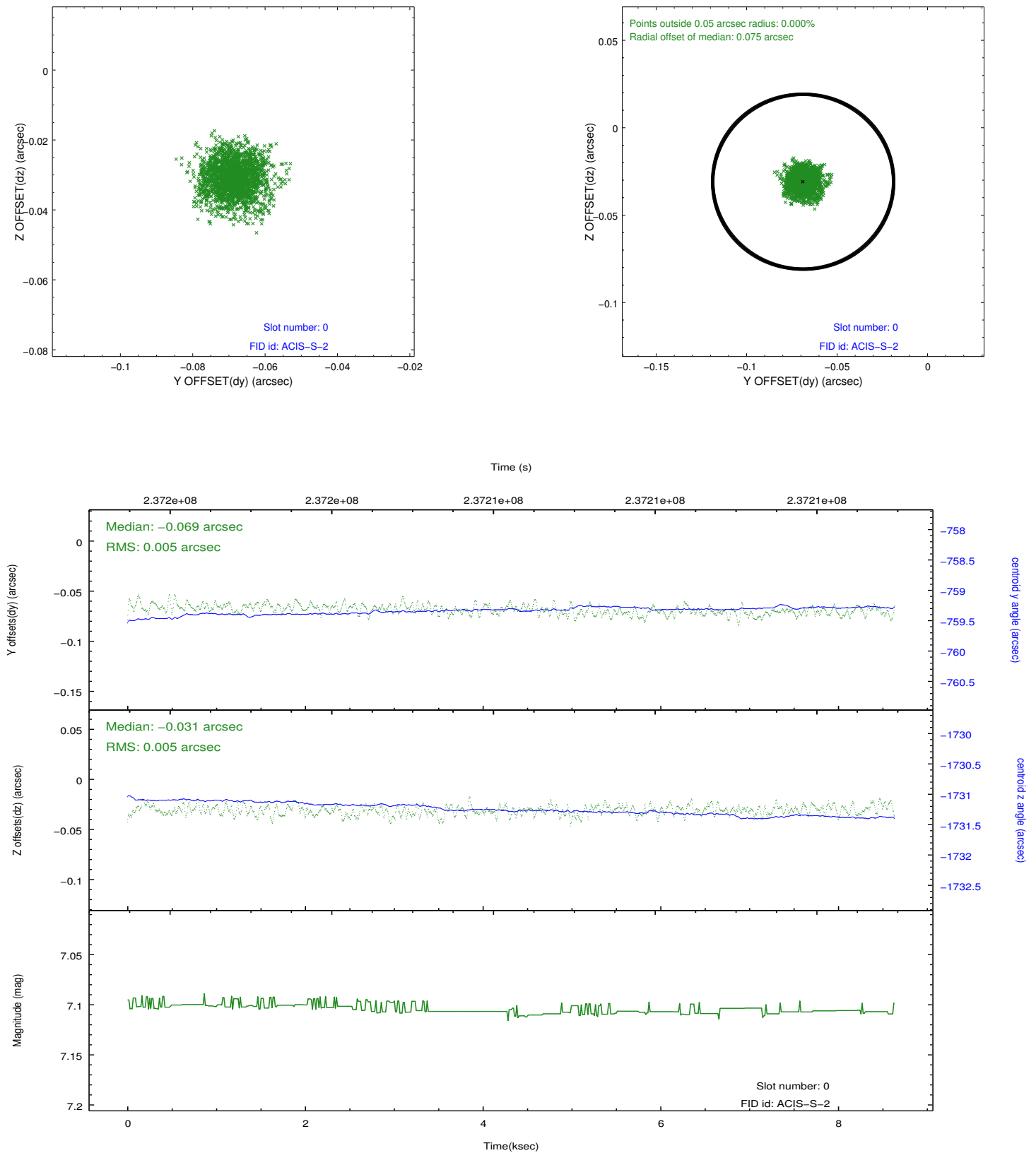


2.4.5 Slot 7

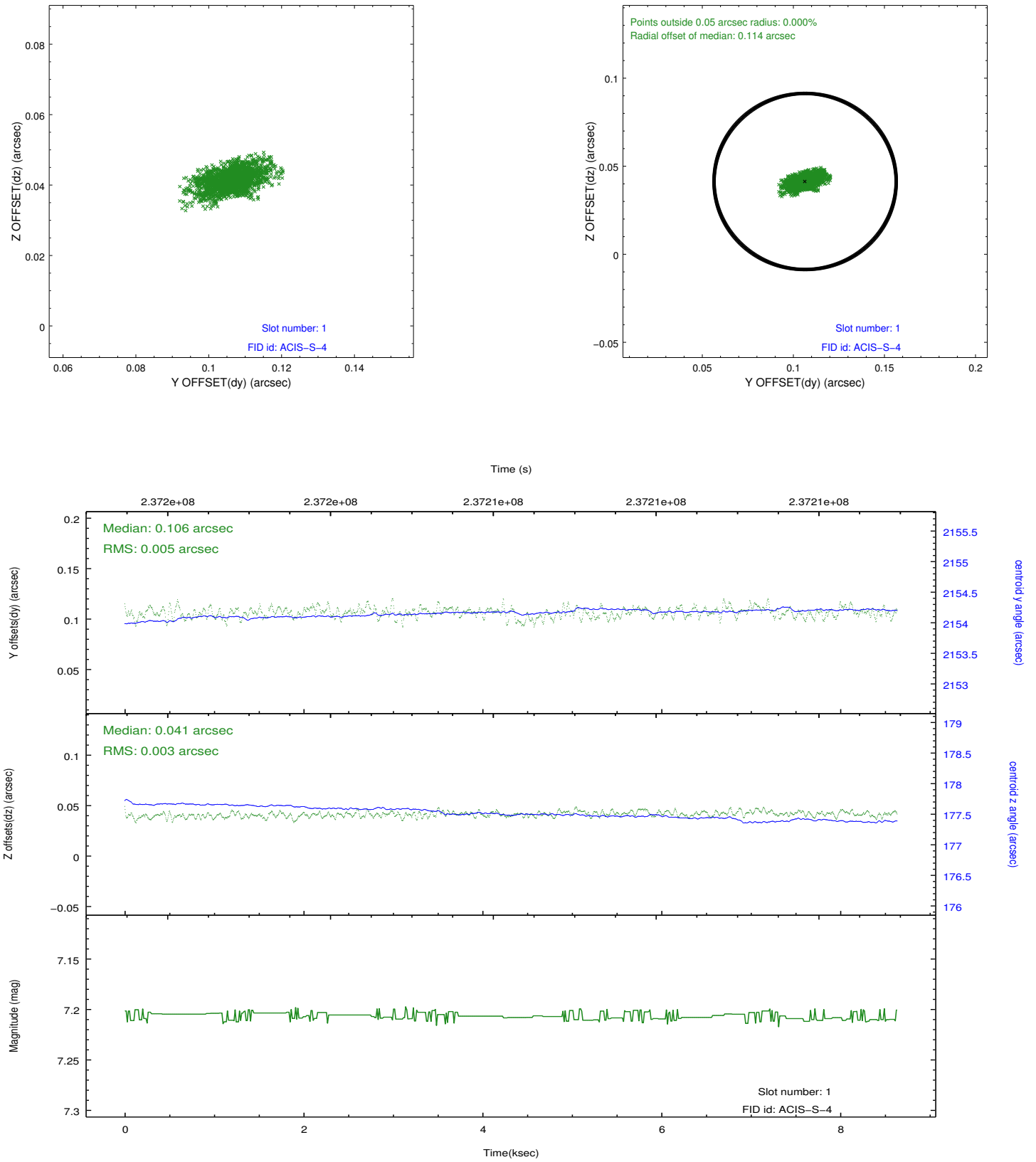


2.5 FID Slots

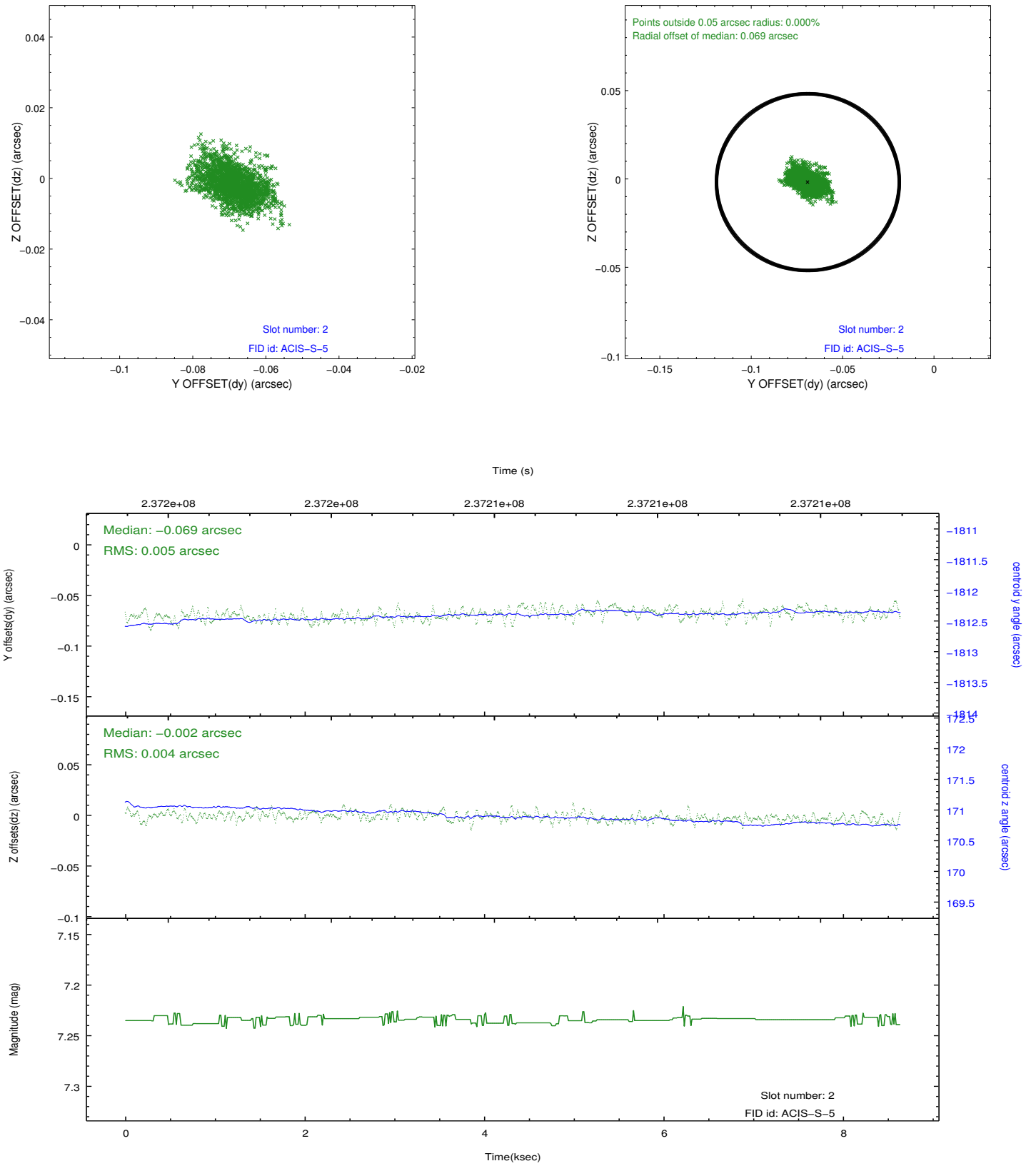
2.5.1 Slot 0



2.5.2 Slot 1



2.5.3 Slot 2



A Summary

A.1 Status

V&V Scientist	Beth Sundheim
V&V Date (YYYY-MM-DD)	2013.01.18
V&V Edition	1
V&V Disposition and Status	OK
V&V Charge Time	8.211199

A.2 Comments