

V&V Reference Report

L2 ASCDS Version : 10.9.1

Observation 6324 - L2 Version 4
Chandra X-Ray Center

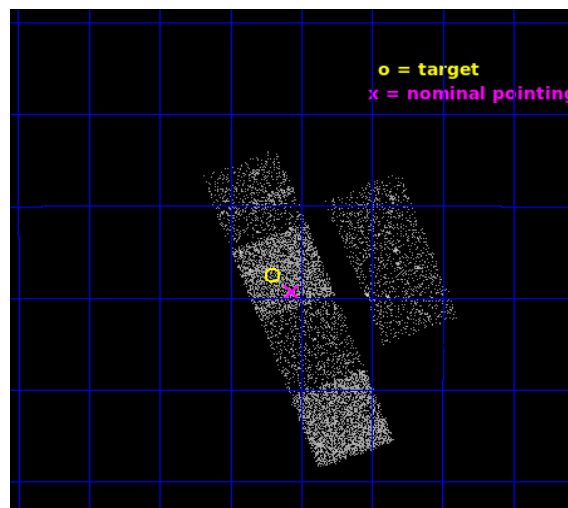
L2 Processing Date : Oct 9 2020

Contents

1	Front	2
2	OBI	3
2.1	OBI	3
2.1.1	Images	3
2.1.2	Bias	3
2.1.3	Parameters	4
2.1.4	Events	4
2.2	Compared Parameters	5
2.3	Aspect	6
2.4	Star Slots	9
2.4.1	Slot 3	9
2.4.2	Slot 4	10
2.4.3	Slot 5	11
2.4.4	Slot 6	12
2.4.5	Slot 7	13
2.5	FID Slots	14
2.5.1	Slot 0	14
2.5.2	Slot 1	15
2.5.3	Slot 2	16
A	Summary	17
A.1	Status	17
A.2	Comments	17

1 Front

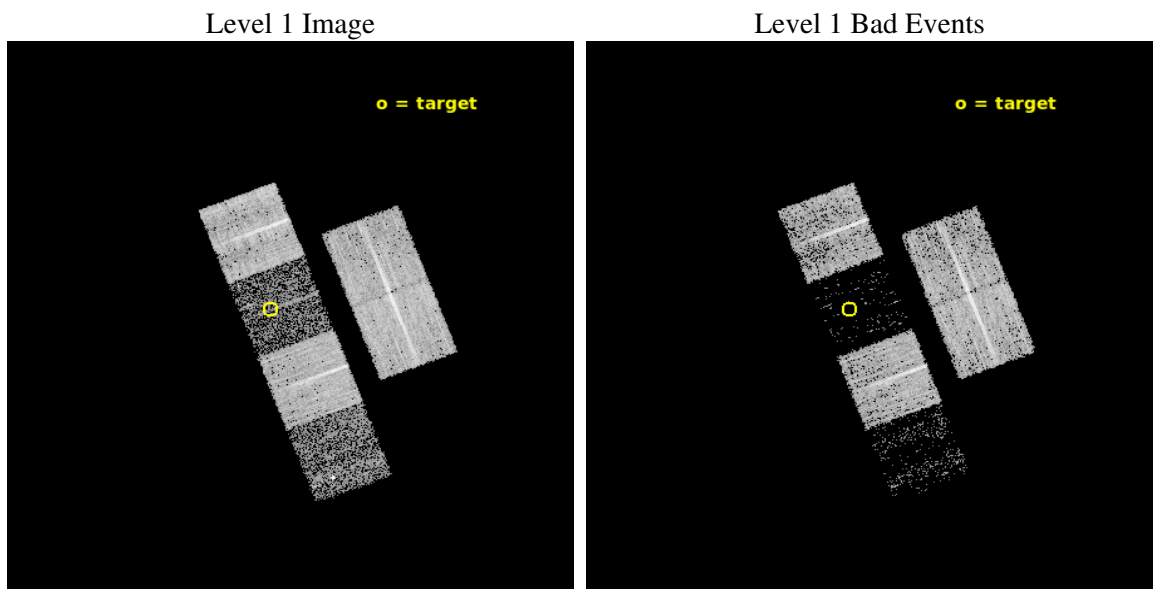
seq_num	100060	Sequence number
obs_id	6324	Observation id
title	Comet 9P/Tempel 1 During the Deep Impact Encounter	Proposal title
observer	Carey Lisse	Principal investigator
object	Comet 9P/Tempel 1	Source name
dtcycle	0	
cycle	P	events from which exps? Prim/Second/Both
ra_targ	204.676405	Observer's specified target RA [deg]
dec_targ	-9.792211	Observer's specified target Dec [deg]
ra_nom	204.6414393281	Nominal RA [deg]
dec_nom	-9.8221468722938	Nominal Dec [deg]
roll_nom	248.88813808757	Nominal Roll [deg]
revision	4	Processing version of data
ontime	7180.7999732494	Sum of GTIs [s]
livetime	7089.8723602295	Livetime [s]
ontime2	7180.7999732494	Sum of GTIs [s]
ontime3	7180.7999732494	Sum of GTIs [s]
ontime5	7180.7999732494	Sum of GTIs [s]
ontime6	7174.3180127442	Sum of GTIs [s]
ontime7	7180.7999732494	Sum of GTIs [s]
ontime8	7177.5590029657	Sum of GTIs [s]
l2events	10097	Number of level 2 events



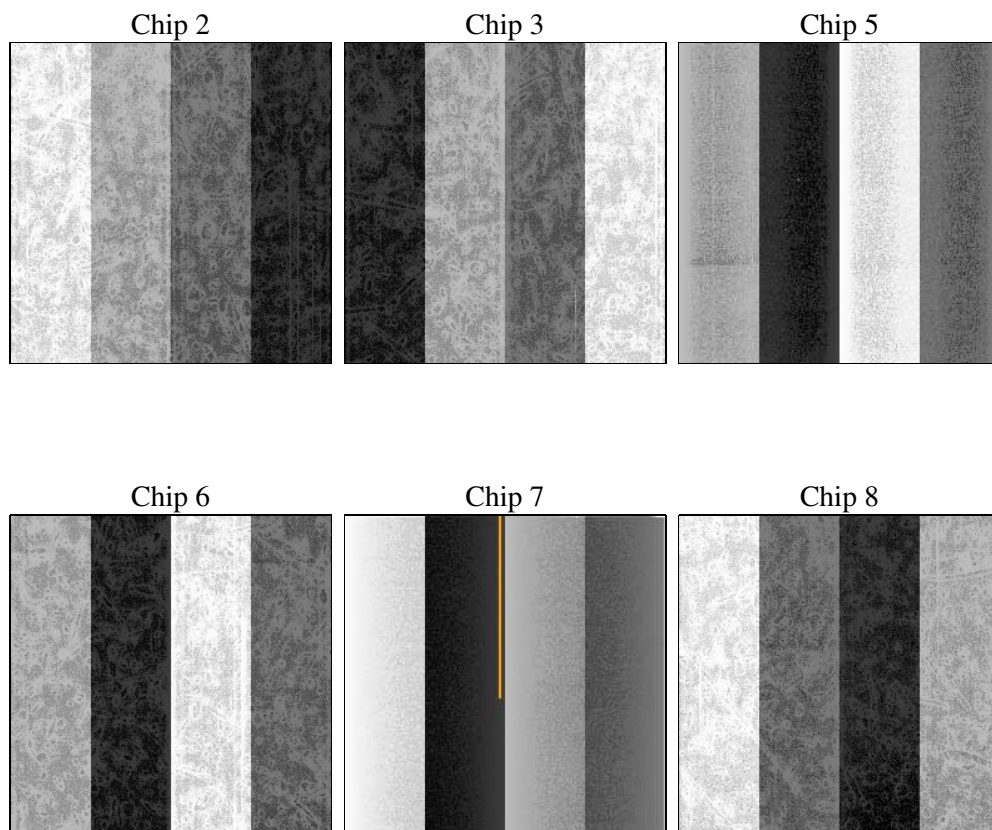
2 OBI

2.1 OBI

2.1.1 Images



2.1.2 Bias



2.1.3 Parameters

obi_num	0	Obi number	sched_exp_time	7000.000000	[s] Scheduled observation exposure time
ascdsver	10.9.1	Processing system revision	ontime	7180.7999732494	Sum of GTIs [s]
caldsver	4.9.2	 	ontime2	7180.7999732494	Sum of GTIs [s]
date	2020-10-09T07:47:56	Date and time of file creation	ontime3	7180.7999732494	Sum of GTIs [s]
revision	4	Processing version of data	ontime5	7180.7999732494	Sum of GTIs [s]
			ontime6	7174.3180127442	Sum of GTIs [s]
			ontime7	7180.7999732494	Sum of GTIs [s]
			ontime8	7177.5590029657	Sum of GTIs [s]
			l1events	146553	Number of level 1 events

2.1.4 Events

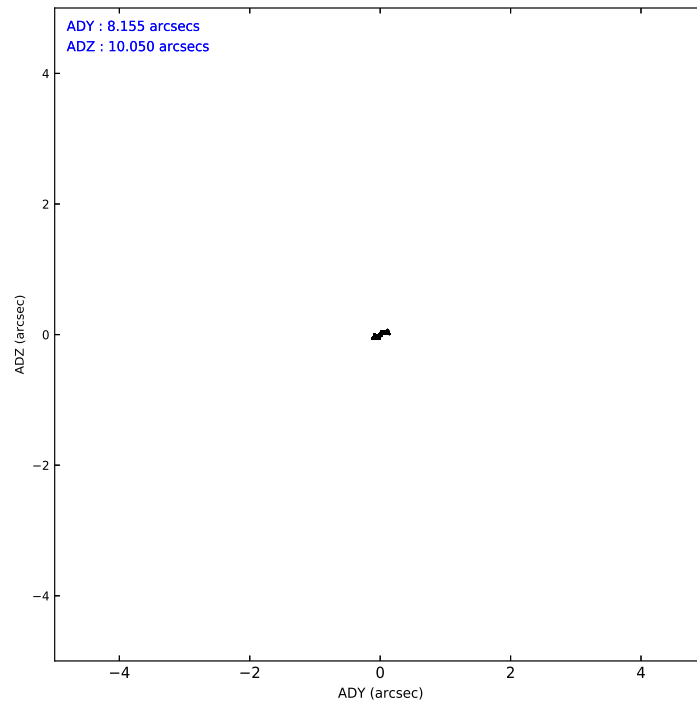
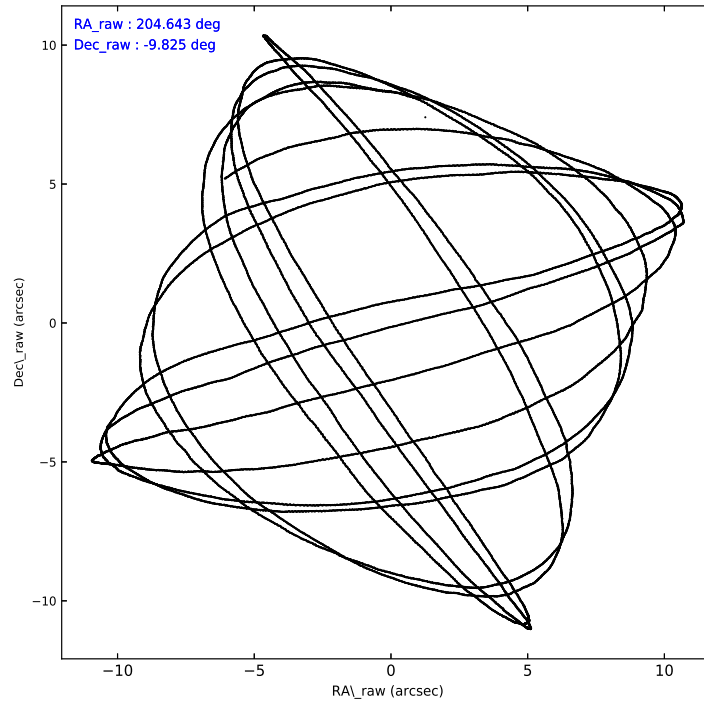
	ccd 2	ccd 3	ccd 5	ccd 6	ccd 7	ccd 8
level 1 events	37699	30307	6472	31677	4687	35711
rejected events	36121	29215	2243	30306	1166	27046
rejected %	95%	96%	34%	95%	24%	75%

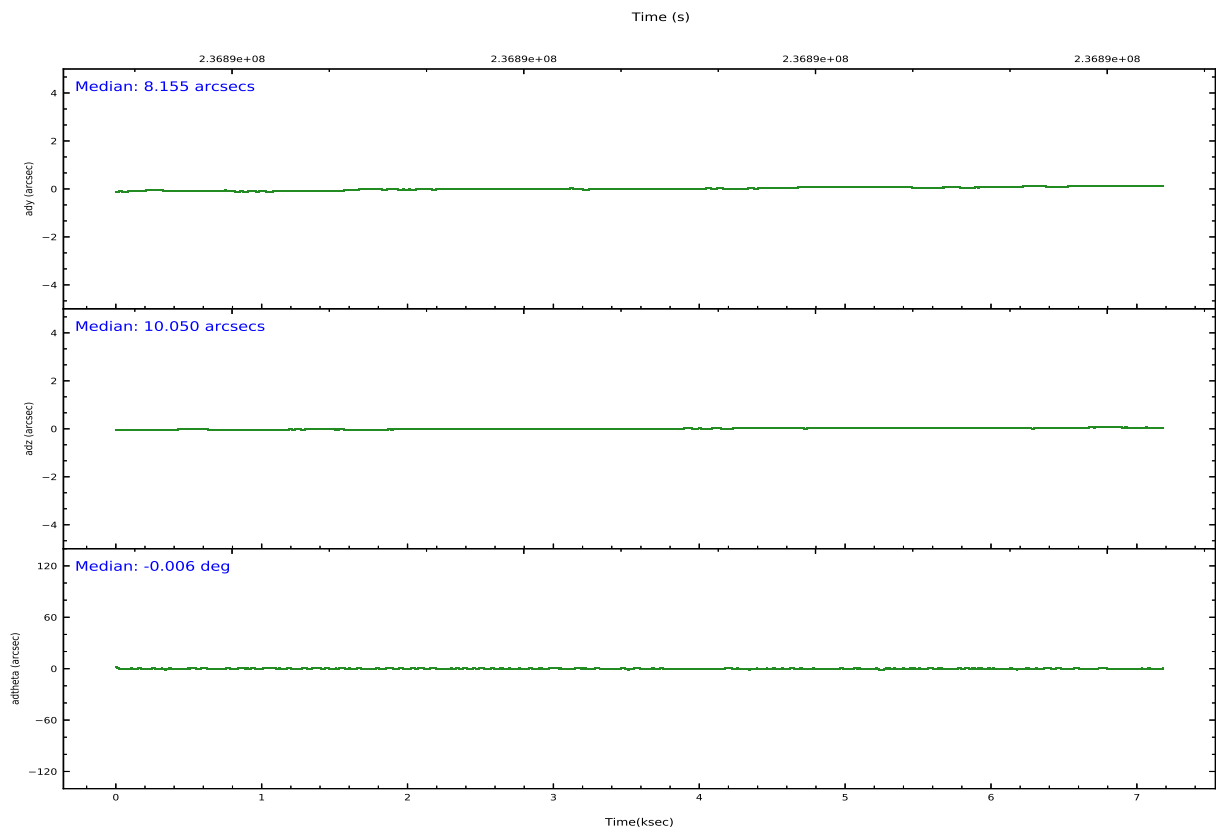
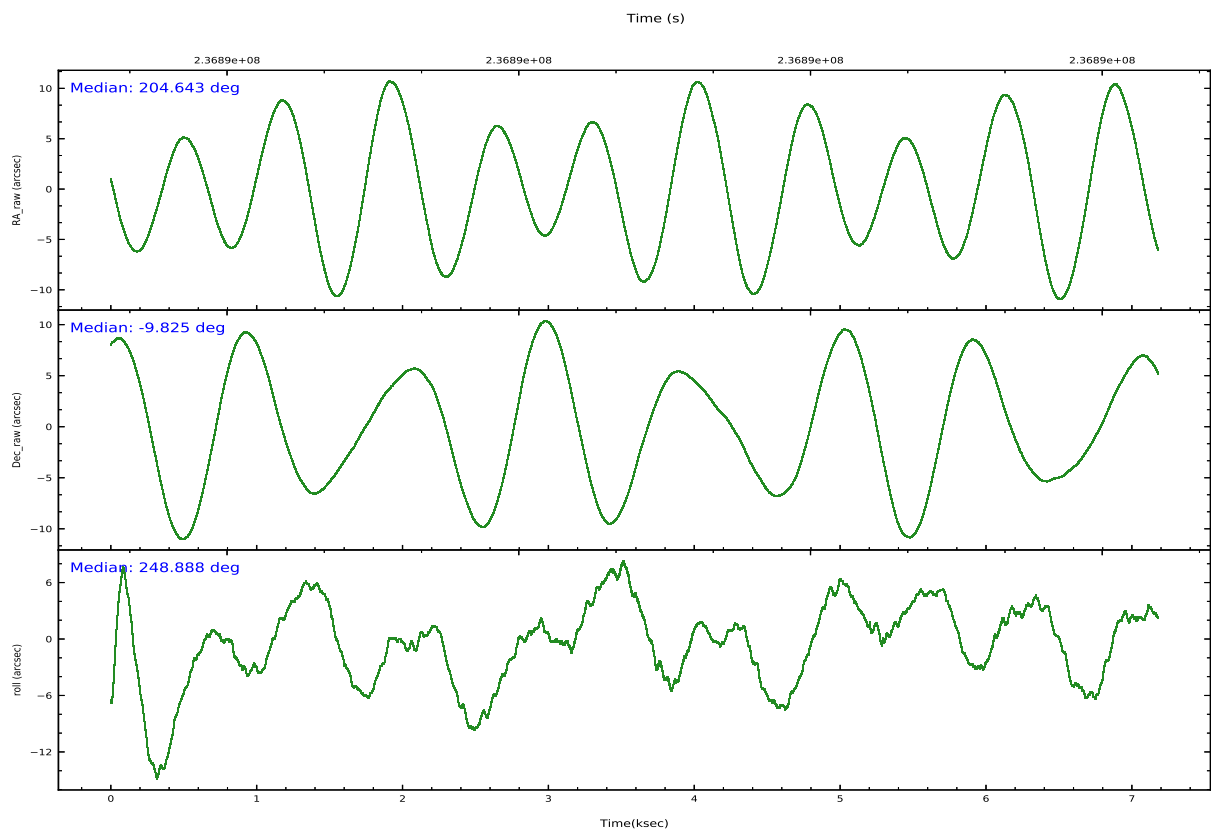
	ccd 2	ccd 3	ccd 5	ccd 6	ccd 7	ccd 8
grade 0 events	708	536	1395	626	953	2449
	1%	1%	21%	1%	20%	6%
grade 1 events	12	7	38	10	25	19
	0%	0%	0%	0%	0%	0%
grade 2 events	396	136	1607	277	1219	1986
	1%	0%	24%	0%	26%	5%
grade 3 events	191	208	504	222	561	1130
	0%	0%	7%	0%	11%	3%
grade 4 events	215	168	443	198	536	1054
	0%	0%	6%	0%	11%	2%
grade 5 events	54	29	362	25	134	154
	0%	0%	5%	0%	2%	0%
grade 6 events	140	101	455	110	414	2460
	0%	0%	7%	0%	8%	6%
grade 7 events	35983	29122	1668	30209	845	26459
	95%	96%	25%	95%	18%	74%

2.2 Compared Parameters

Parameter	Planned	Actual	Parameter	Planned	Actual
Instrument	ACIS	ACIS	Obspar version number	8	8
Detector	ACIS-235678	ACIS-235678	Obspar file type	PREDICTED	ACTUAL
Grating	NONE	NONE	Obspar update status	NONE	UPDATED
Data mode	VFAINT	VFAINT	Number of optional ACIS chips dropped	0	0
Observation mode	POINTING	POINTING	On-chip summing requested	N	N
[deg] Pointing RA	204.638684	204.6414393281	Subarray requested	NONE	NONE
[deg] Pointing Dec	-9.798666	-9.8221468722938	Alternating exposures requested	N	N
[deg] Pointing Roll	248.727047	248.88813808757	[s] Primary exposure time	0.000000	3.2
[mm] SIM focus pos	-0.684267	-0.6828225247311905			
[mm] SIM defocus	0	0.001444936568705701			
[mm] SIM translation stage pos	-190.132523	-190.145094680475			
[mm] SIM translation stage offset	0	0.01257209746719923			
[s] Observation start time (MET)	236887383.184000	236887006.92427			
Observation start date	2005-07-04T18:01:59	2005-07-04T17:56:46			
[s] Observation end time (MET)	236894383.184000	236894517.09961			
Observation end date	2005-07-04T19:58:39	2005-07-04T20:01:57			
Read mode	TIMED	TIMED			

2.3 Aspect



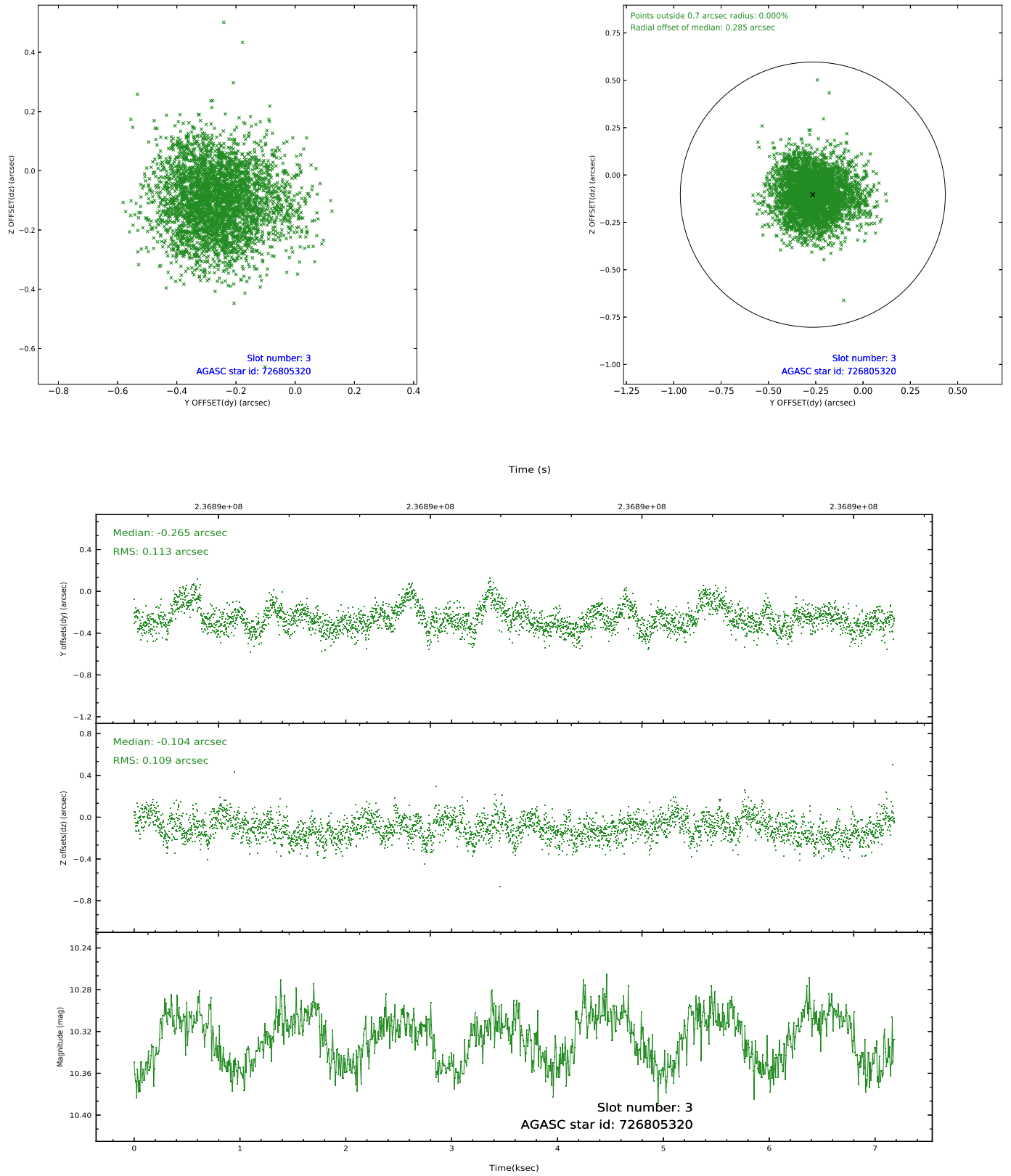


Slot Statistics

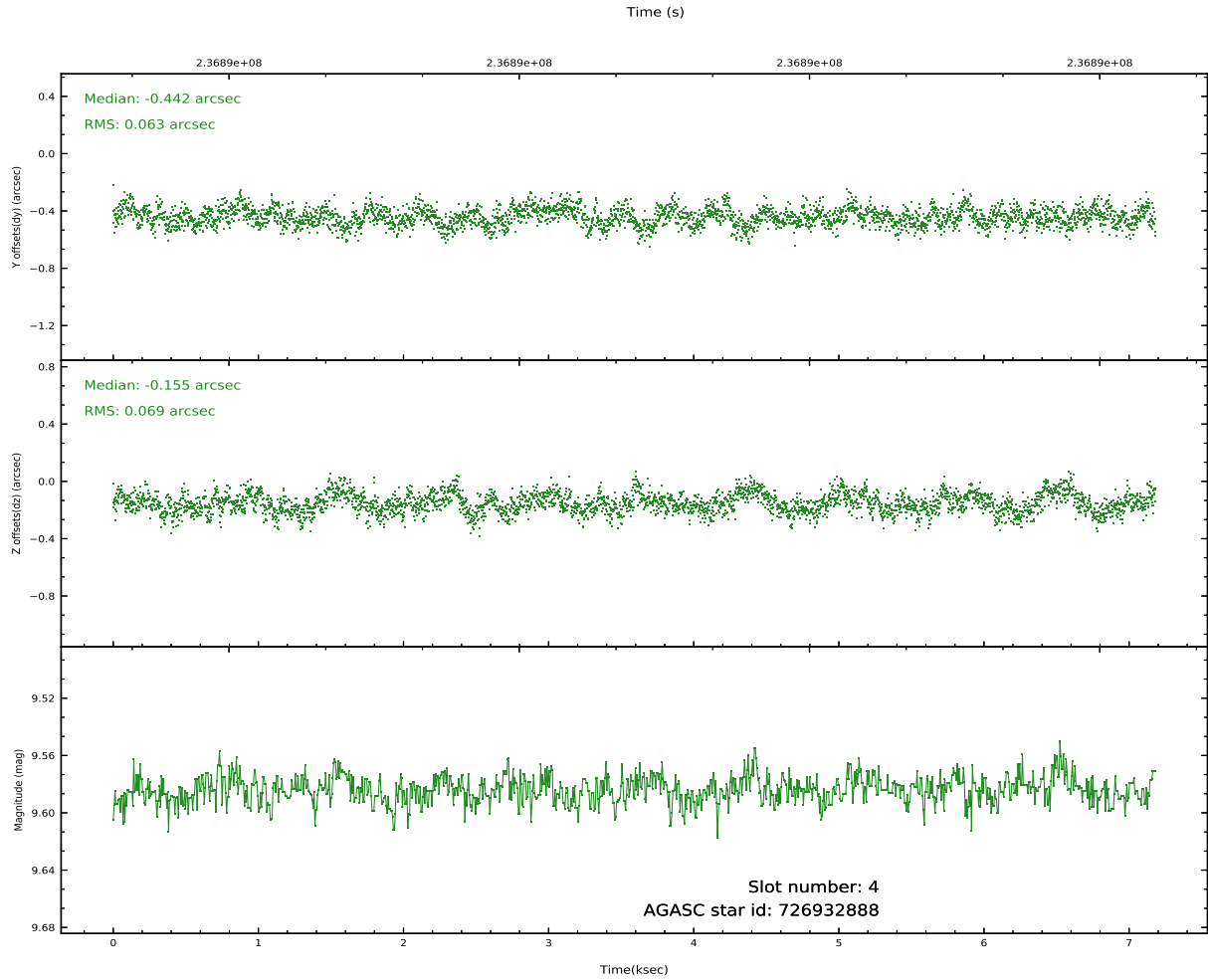
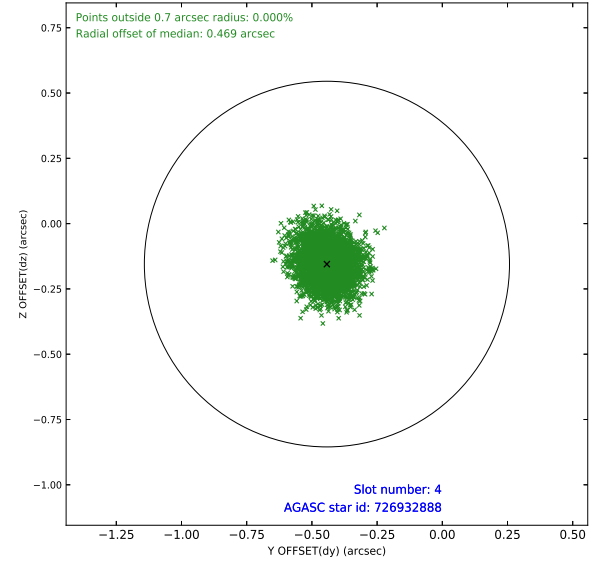
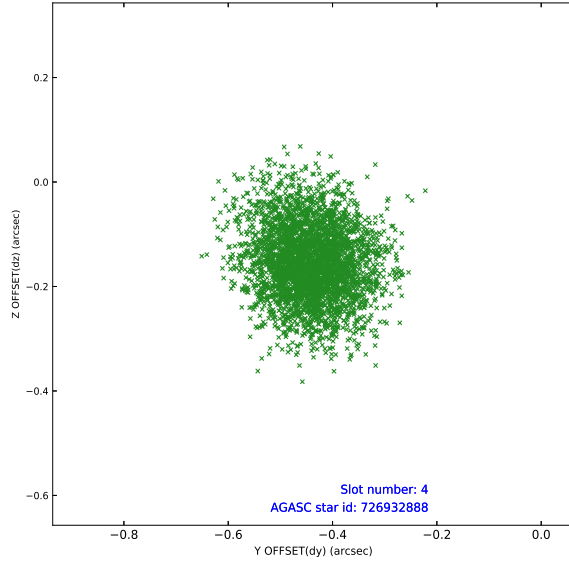
pt	status	used	id	mag	n_pts	frac_pts	med_dy	med_dz	dr1	dr2	ra	dec	mean_y	mea
0	FID		ACIS-S-2	7.10	1752	1.000	-0.073	-0.068	0.006	0.011	0.000000	0.000000	-760.95	-1731
1	FID		ACIS-S-4	7.20	1752	1.000	0.188	0.053	0.007	0.012	0.000000	0.000000	2152.15	176
2	FID		ACIS-S-5	7.23	1752	1.000	-0.146	0.024	0.007	0.012	0.000000	0.000000	-1812.91	170
3	GUIDE	used	726805320	10.33	3499	1.000	-0.265	-0.104	0.168	0.268	204.212849	-9.734967	335.77	-1490
4	GUIDE	used	726932888	9.58	3502	1.000	-0.442	-0.155	0.101	0.163	204.640397	-9.165404	-2126.25	-821
5	GUIDE	used	726935840	9.51	3503	1.000	0.460	-0.193	0.097	0.162	205.084608	-9.297514	-2254.44	821
6	GUIDE	used	727320712	10.44	3490	1.000	0.247	0.051	0.246	0.384	204.468965	-10.254166	1746.62	35
7	GUIDE	used	727321032	9.97	3497	1.000	-0.016	0.408	0.177	0.325	205.073686	-10.196206	776.50	1956

2.4 Star Slots

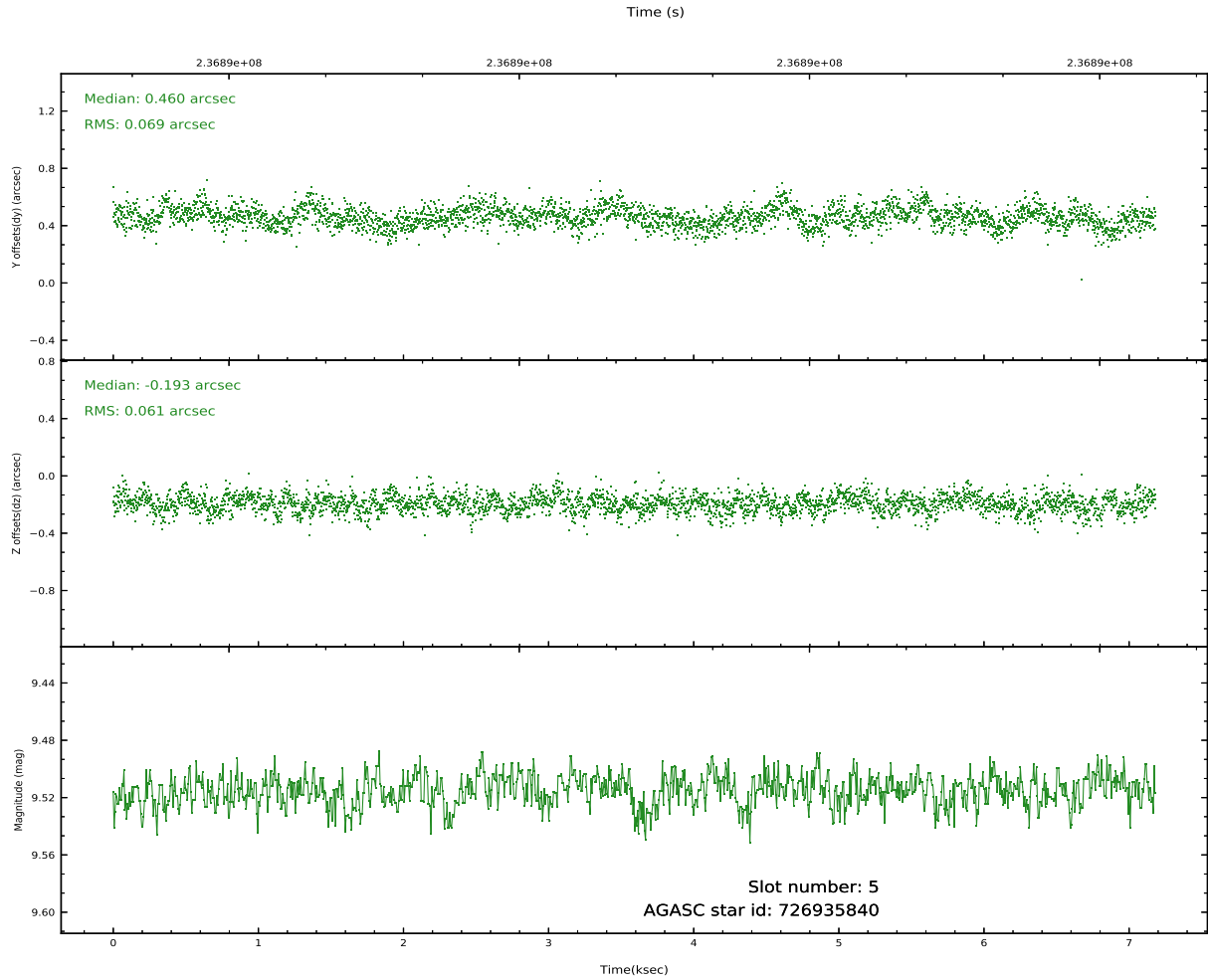
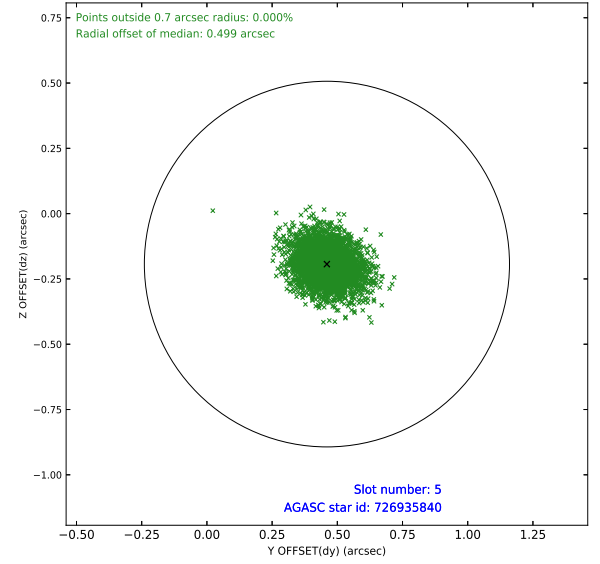
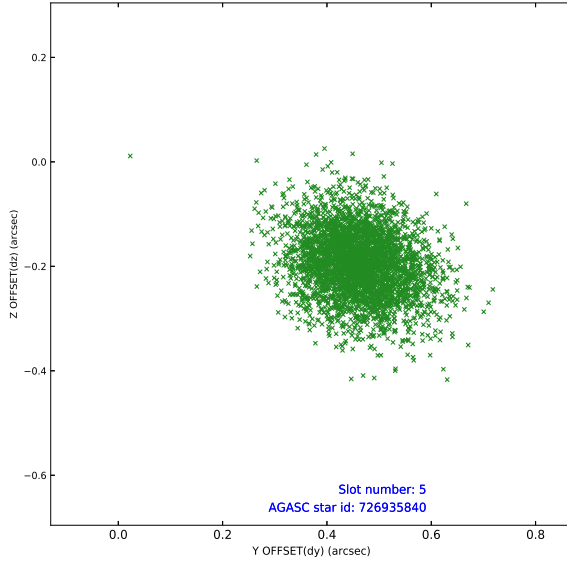
2.4.1 Slot 3



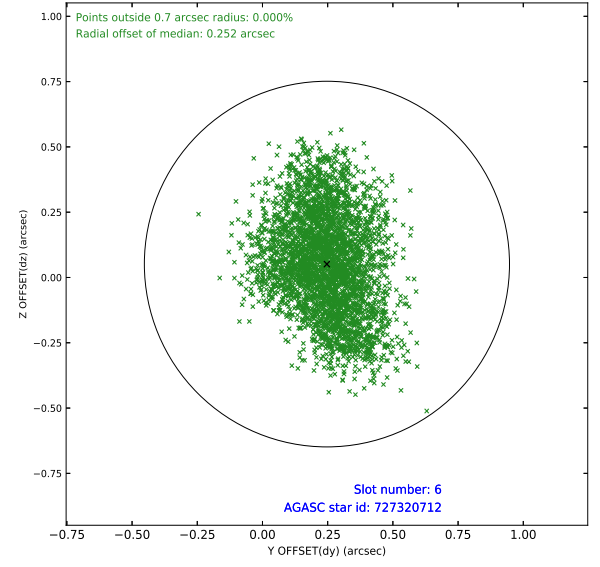
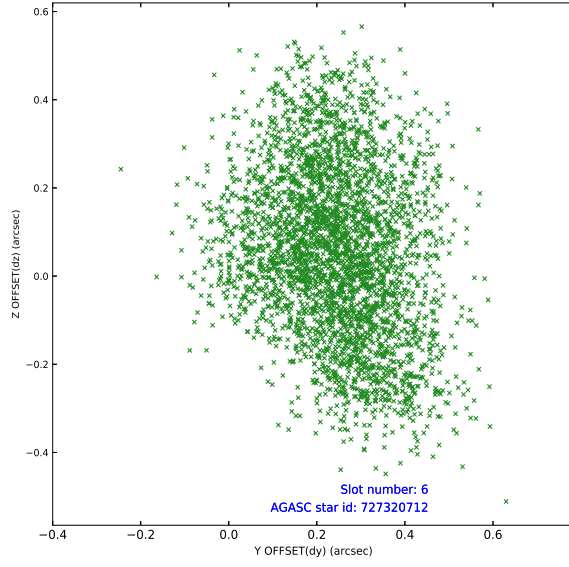
2.4.2 Slot 4



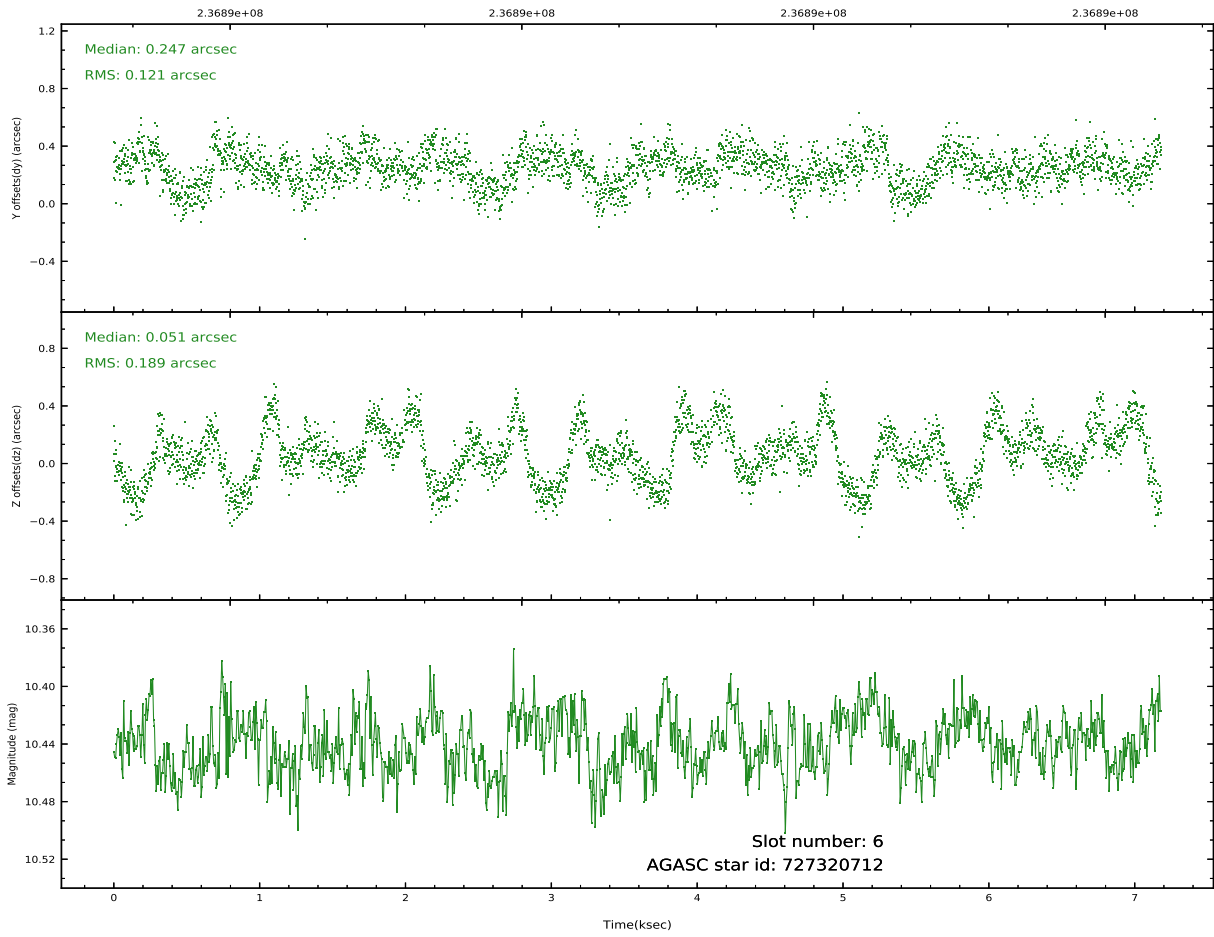
2.4.3 Slot 5



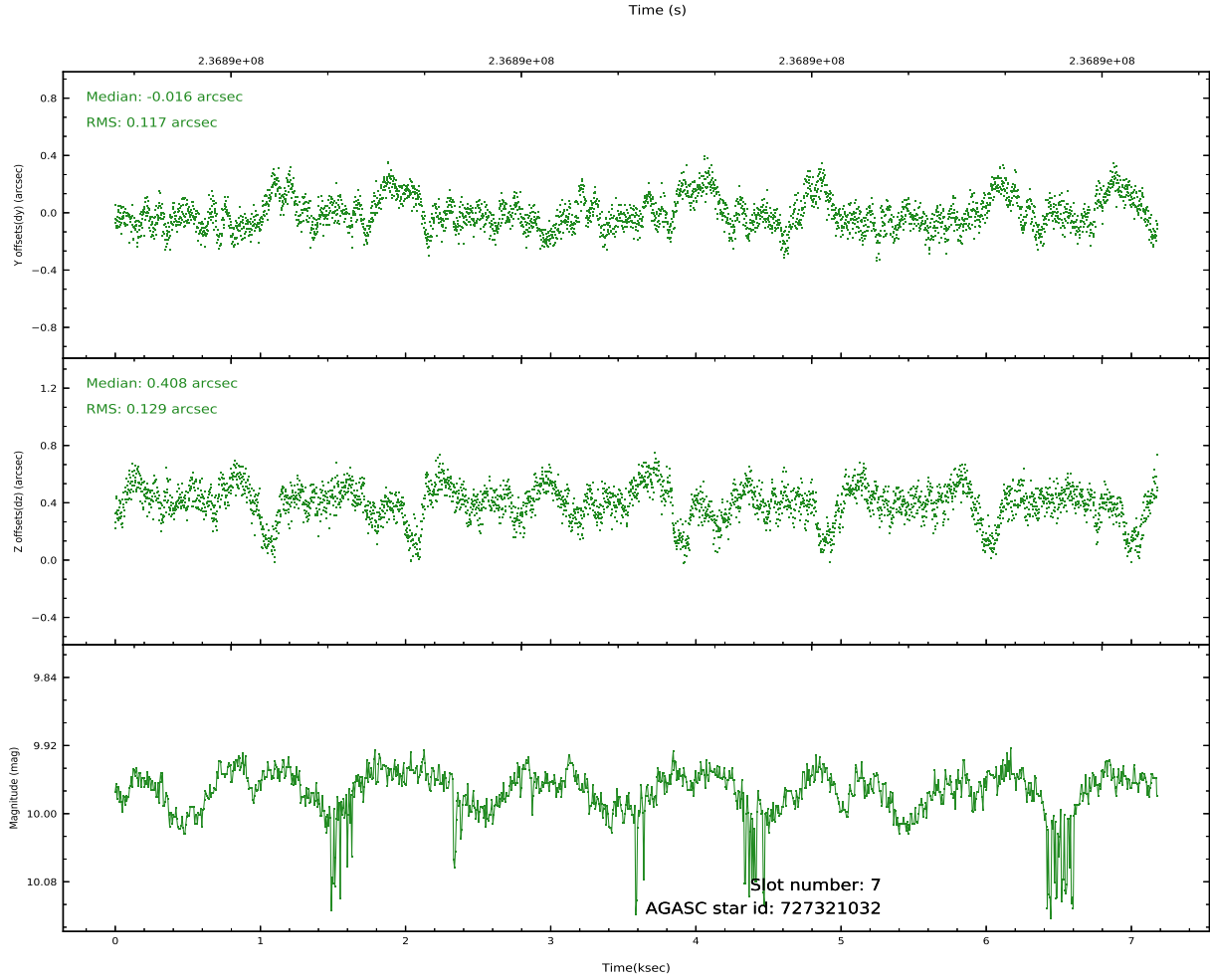
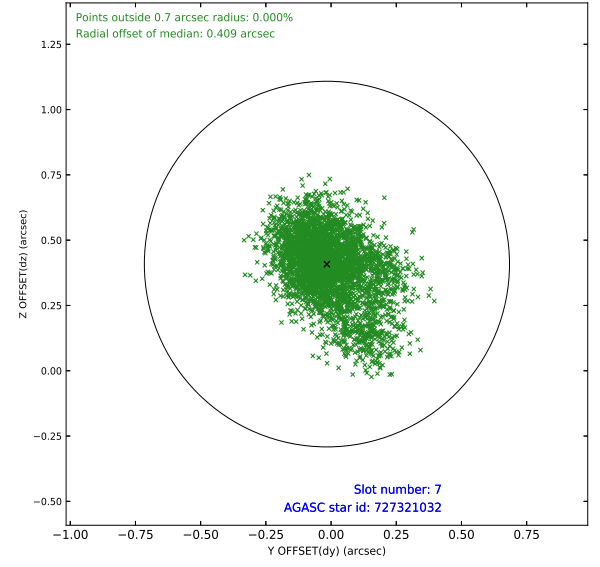
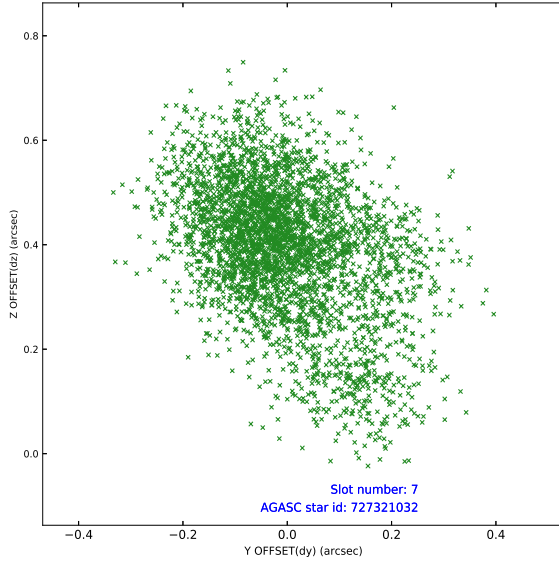
2.4.4 Slot 6



Time (s)

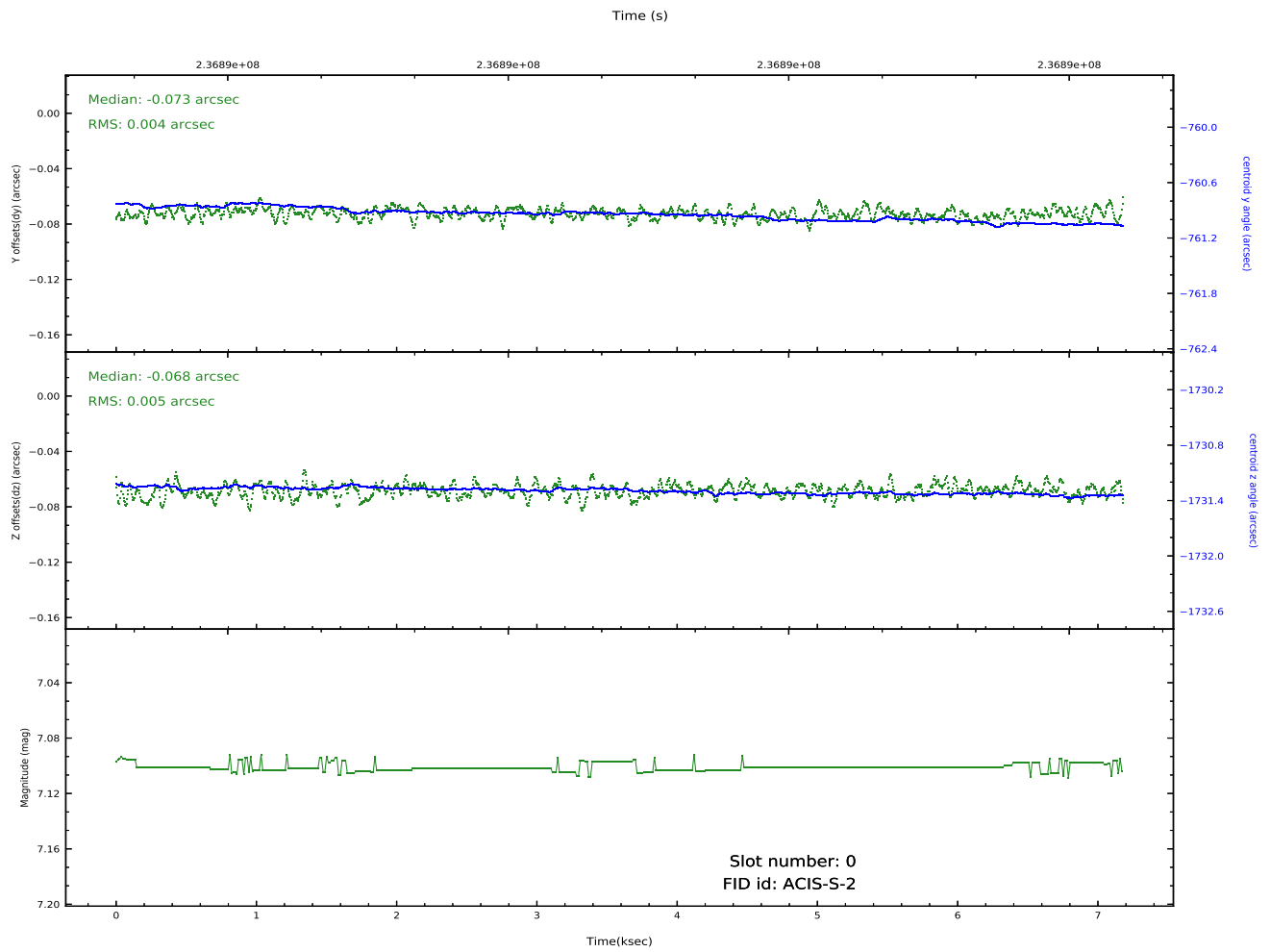
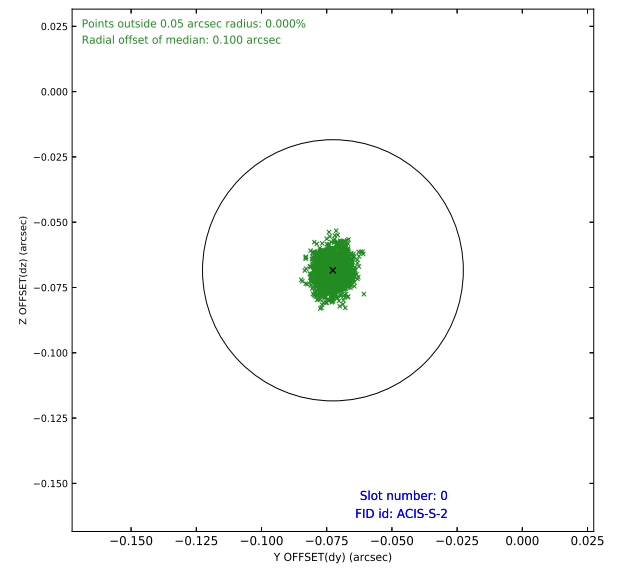
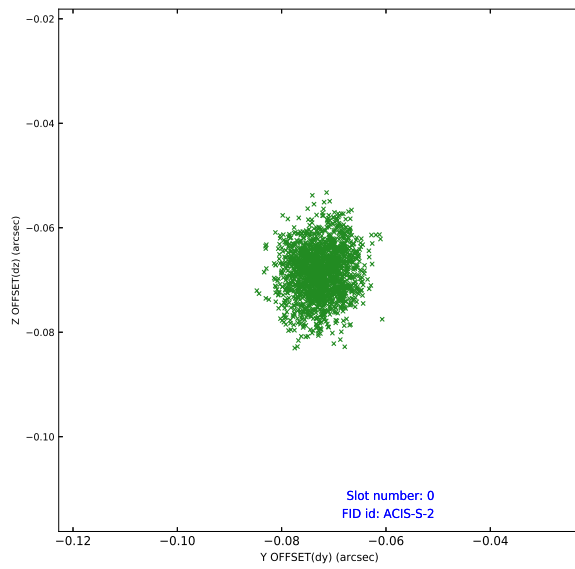


2.4.5 Slot 7

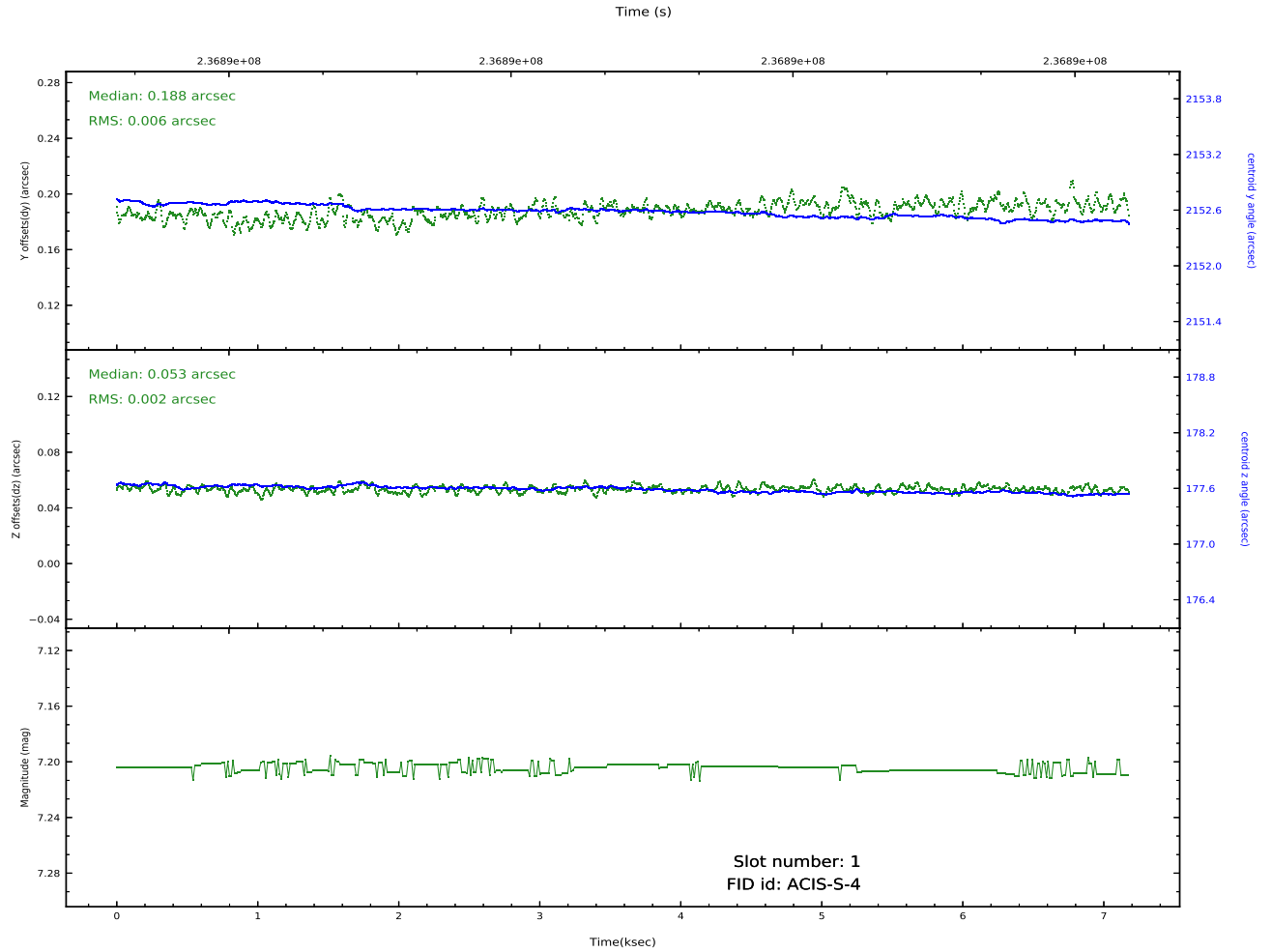
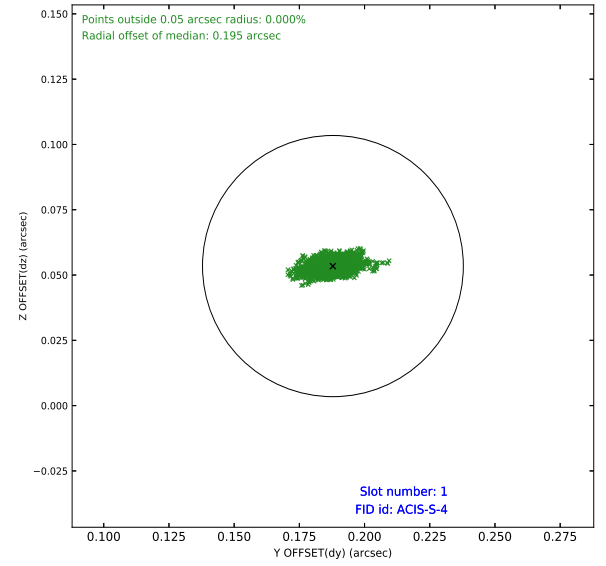
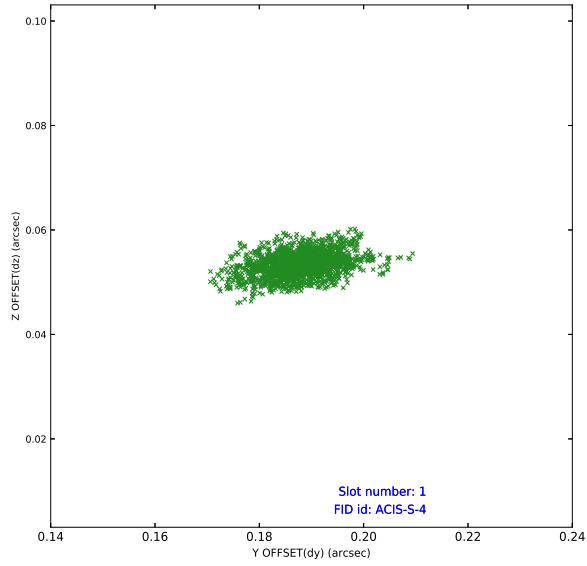


2.5 FID Slots

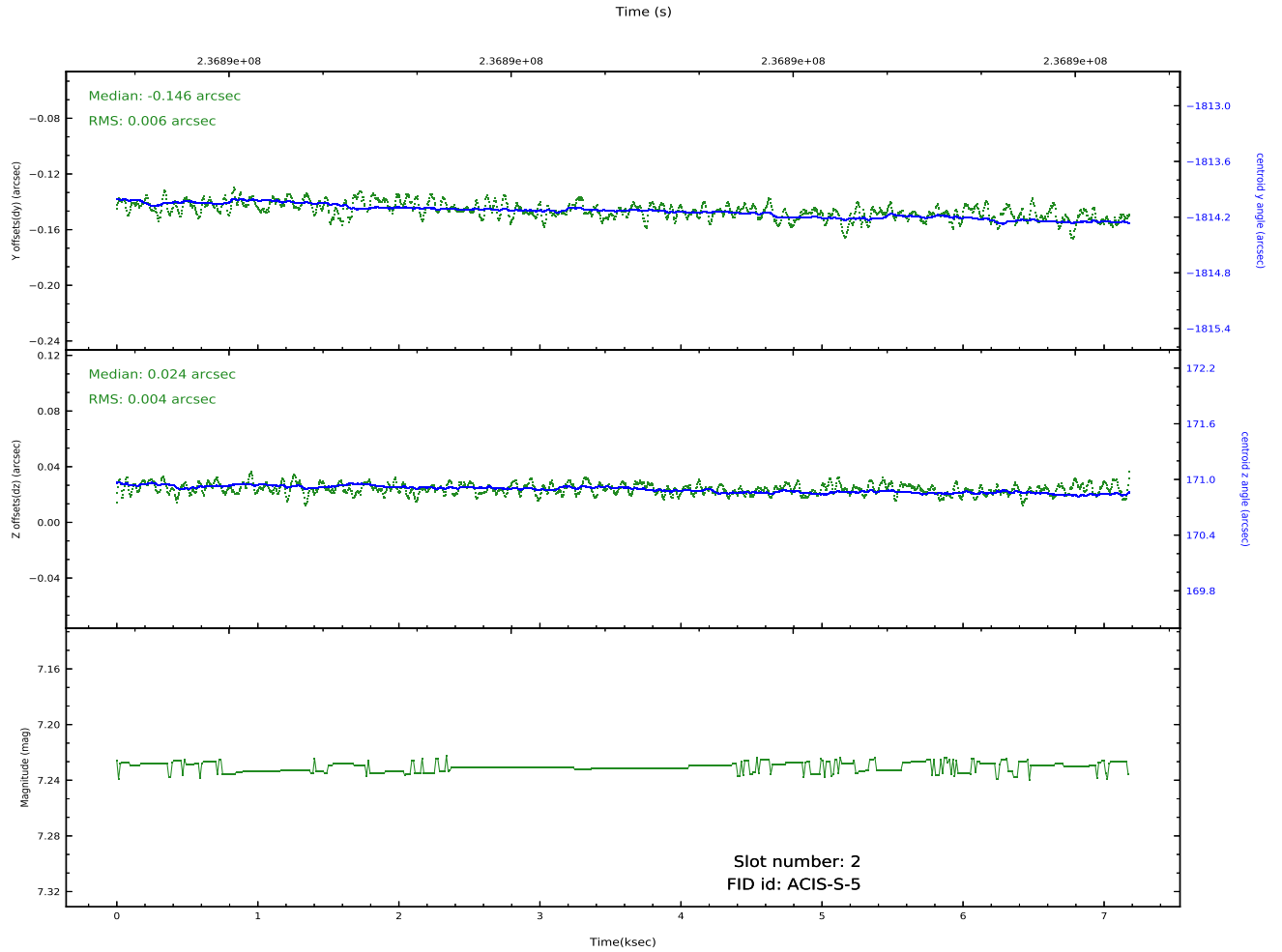
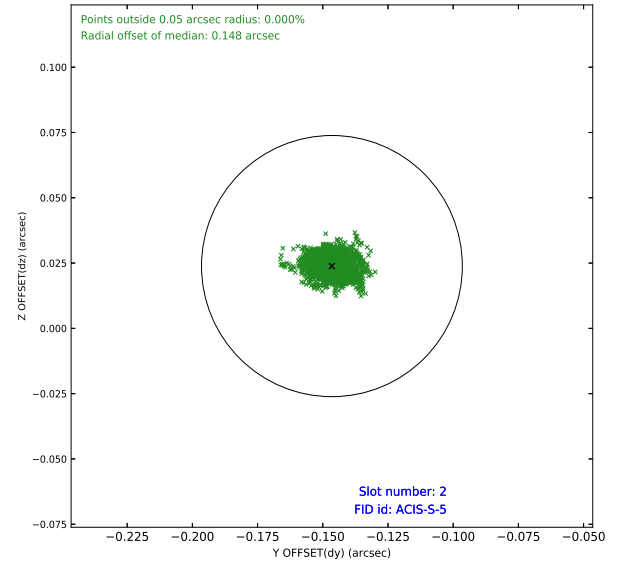
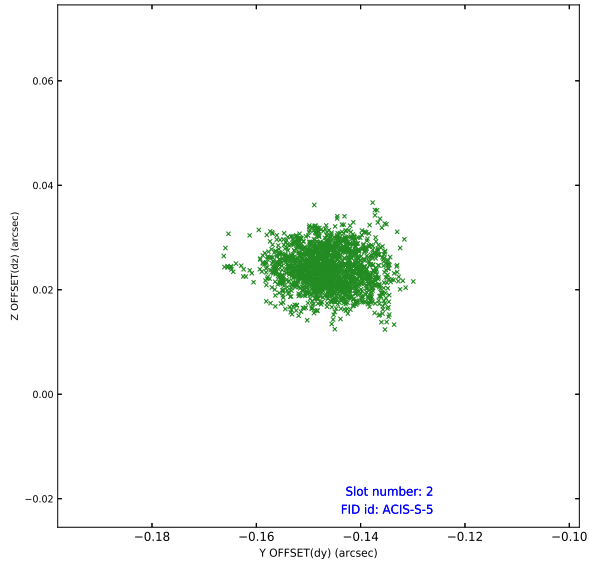
2.5.1 Slot 0



2.5.2 Slot 1



2.5.3 Slot 2



A Summary

A.1 Status

V&V Scientist	Jen Lauer
V&V Date (YYYY-MM-DD)	2020.10.13
V&V Edition	1
V&V Disposition and Status	OK
V&V Charge Time	7.180799

A.2 Comments

This is a moving target. Users will need to run `sso_freeze` or similar software to position the events in the reference frame of the target.