

V&V Reference Report

L2 ASCDS Version : 8.5.1.1

Observation 6321 - L2 Version 3
Chandra X-Ray Center

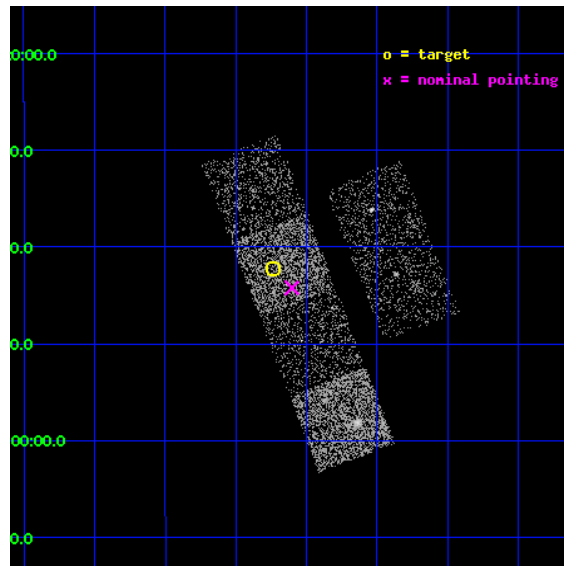
L2 Processing Date : Dec 25 2012

Contents

1	Front	2
2	OBI	3
2.1	OBI	3
2.1.1	Images	3
2.1.2	Bias	3
2.1.3	Parameters	4
2.1.4	Events	4
2.2	Compared Parameters	5
2.3	Aspect	6
2.4	Star Slots	9
2.4.1	Slot 3	9
2.4.2	Slot 4	10
2.4.3	Slot 5	11
2.4.4	Slot 6	12
2.4.5	Slot 7	13
2.5	FID Slots	14
2.5.1	Slot 0	14
2.5.2	Slot 1	15
2.5.3	Slot 2	16
A	Summary	17
A.1	Status	17
A.2	Comments	17

1 Front

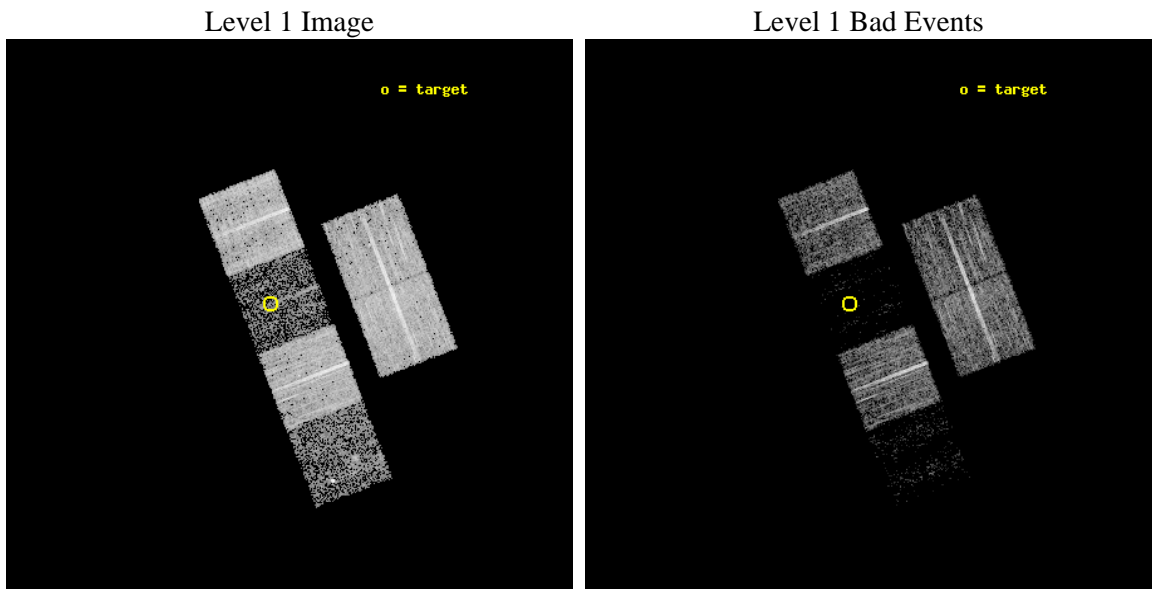
seq_num	100060	Sequence number
obs_id	6321	Observation id
title	Comet 9P/Tempel 1 During the Deep Impact Encounter	Proposal title
observer	Dr. Carey Lisse	Principal investigator
object	9P/Tempel 1	Source name
dtcycle	0	
cycle	P	events from which exps? Prim/Second/Both
ra_targ	204.558817	Observer's specified target RA [deg]
dec_targ	-9.703807	Observer's specified target Dec [deg]
ra_nom	204.52568964413	Nominal RA [deg]
dec_nom	-9.737140893888	Nominal Dec [deg]
roll_nom	248.86439827699	Nominal Roll [deg]
revision	3	Processing version of data
ontime	7180.7999732494	Sum of GTIs [s]
livetime	7089.8723602295	Livetime [s]
ontime2	7180.7999732494	Sum of GTIs [s]
ontime3	7177.5589830577	Sum of GTIs [s]
ontime5	7180.7999732494	Sum of GTIs [s]
ontime6	7180.7999732494	Sum of GTIs [s]
ontime7	7180.7999732494	Sum of GTIs [s]
ontime8	7180.7999732494	Sum of GTIs [s]
l2events	10521	Number of level 2 events



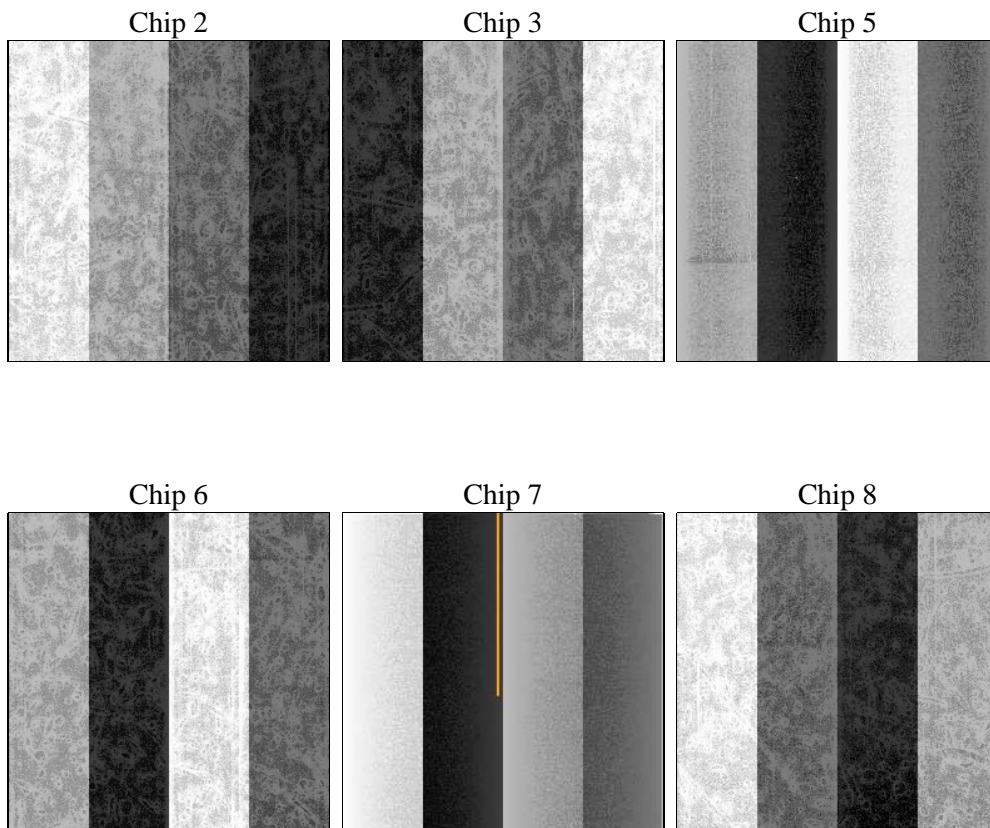
2 OBI

2.1 OBI

2.1.1 Images



2.1.2 Bias



2.1.3 Parameters

obi_num	0	Obi number	sched_exp_time	7000.000000	[s] Scheduled observation exposure time
ascdsver	8.5.1.1	Processing system revision	ontime	7180.7999732494	Sum of GTIs [s]
caldsver	4.5.5	 	ontime2	7180.7999732494	Sum of GTIs [s]
date	2012-12-25T21:17:24	Date and time of file creation	ontime3	7177.5589830577	Sum of GTIs [s]
revision	3	Processing version of data	ontime5	7180.7999732494	Sum of GTIs [s]
			ontime6	7180.7999732494	Sum of GTIs [s]
			ontime7	7180.7999732494	Sum of GTIs [s]
			ontime8	7180.7999732494	Sum of GTIs [s]
			l1events	151009	Number of level 1 events

2.1.4 Events

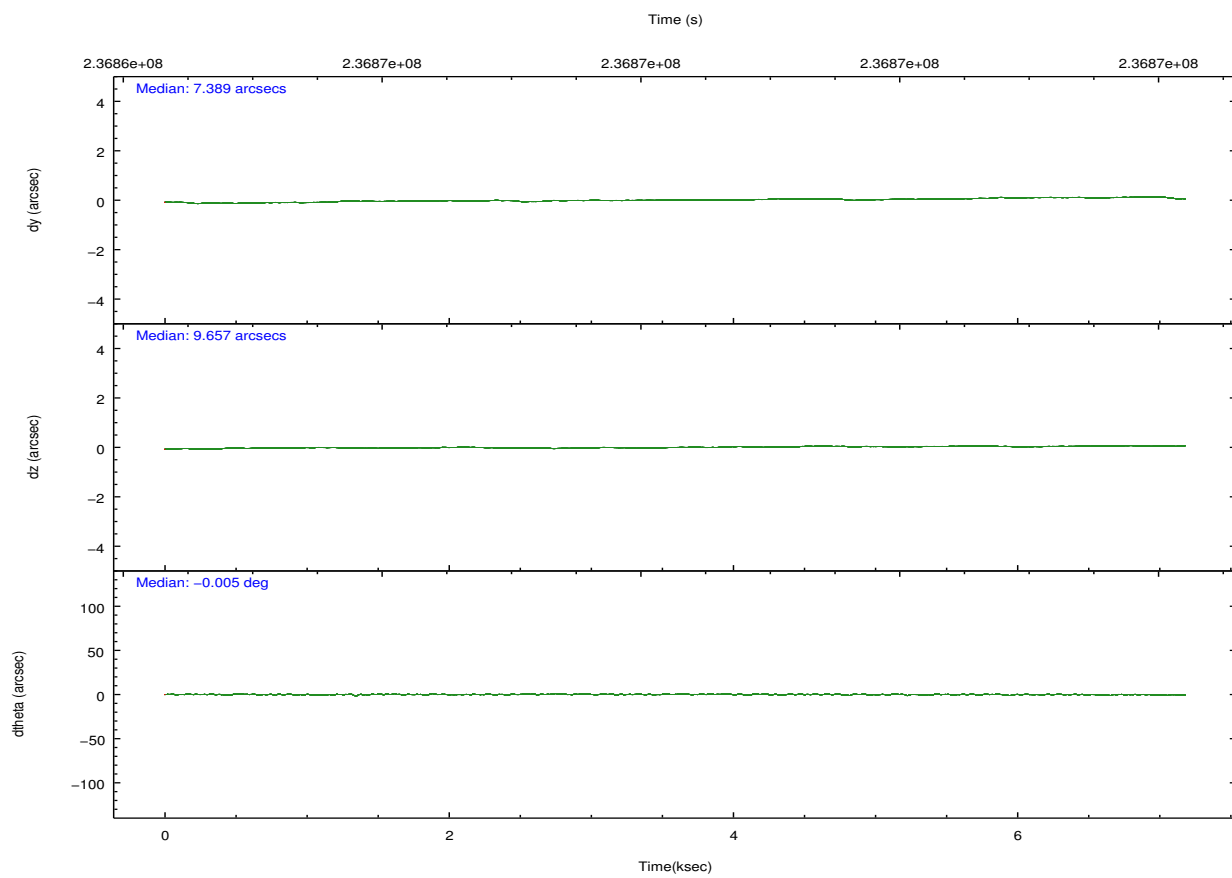
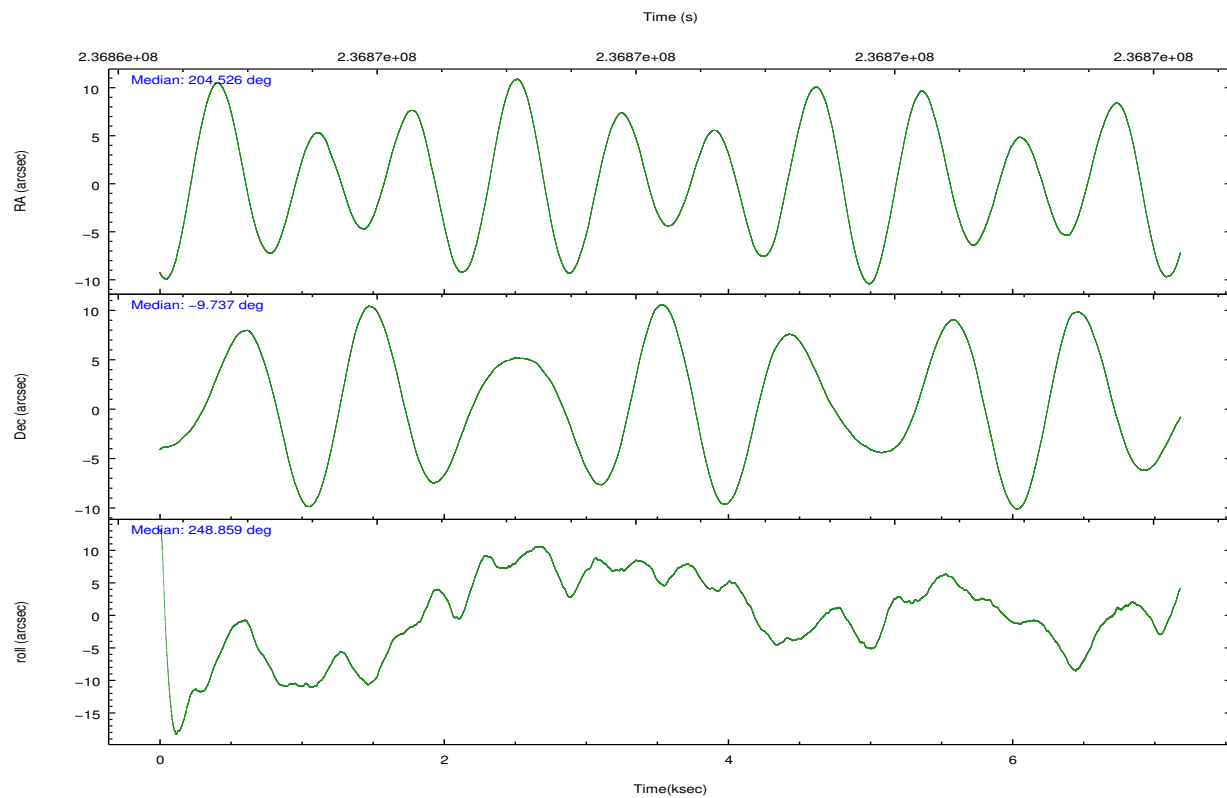
	ccd 2	ccd 3	ccd 5	ccd 6	ccd 7	ccd 8
level 1 events	37046	31439	6739	33938	4443	37404
rejected events	35587	30248	2292	32349	1032	28391
rejected %	96%	96%	34%	95%	23%	75%

	ccd 2	ccd 3	ccd 5	ccd 6	ccd 7	ccd 8
grade 0 events	605	613	1525	812	960	2499
	1%	1%	22%	2%	21%	6%
grade 1 events	3	8	37	12	18	23
	0%	0%	0%	0%	0%	0%
grade 2 events	349	175	1643	303	1161	2309
	0%	0%	24%	0%	26%	6%
grade 3 events	180	181	490	226	502	1062
	0%	0%	7%	0%	11%	2%
grade 4 events	223	172	467	215	461	993
	0%	0%	6%	0%	10%	2%
grade 5 events	40	33	332	35	144	211
	0%	0%	4%	0%	3%	0%
grade 6 events	158	106	535	103	459	2691
	0%	0%	7%	0%	10%	7%
grade 7 events	35488	30151	1710	32232	738	27616
	95%	95%	25%	94%	16%	73%

2.2 Compared Parameters

Parameter	Planned	Actual	Parameter	Planned	Actual
Instrument	ACIS	ACIS	Obspar format version number	7	7
Detector	ACIS-235678	ACIS-235678	Obspar file type	PREDICTED	ACTUAL
Grating	NONE	NONE	Obspar update status	NONE	UPDATED
Data mode	VFAINT	VFAINT	Number of optional ACIS chips dropped	0	0
Observation mode	POINTING	POINTING	On-chip summing requested	N	N
[deg] Pointing RA	204.521096	204.5256896441317	Subarray requested	NONE	NONE
[deg] Pointing Dec	-9.710248	-9.737140893887959	Alternating exposures requested	N	N
[deg] Pointing Roll	248.706951	248.8643982769902	[s] Primary exposure time	0.000000	3.2
[mm] SIM focus pos	-0.684267	-0.6828225247311905			
[mm] SIM defocus	0	0.001444936568705701			
[mm] SIM translation stage pos	-190.132523	-190.145094680475			
[mm] SIM translation stage offset	0	0.01257209746719923			
[s] Observation start time (MET)	236864853.184000	236864477.42324			
Observation start date	2005-07-04T11:46:29	2005-07-04T11:41:17			
[s] Observation end time (MET)	236871853.184000	236871987.59858			
Observation end date	2005-07-04T13:43:09	2005-07-04T13:46:27			
Read mode	TIMED	TIMED			

2.3 Aspect

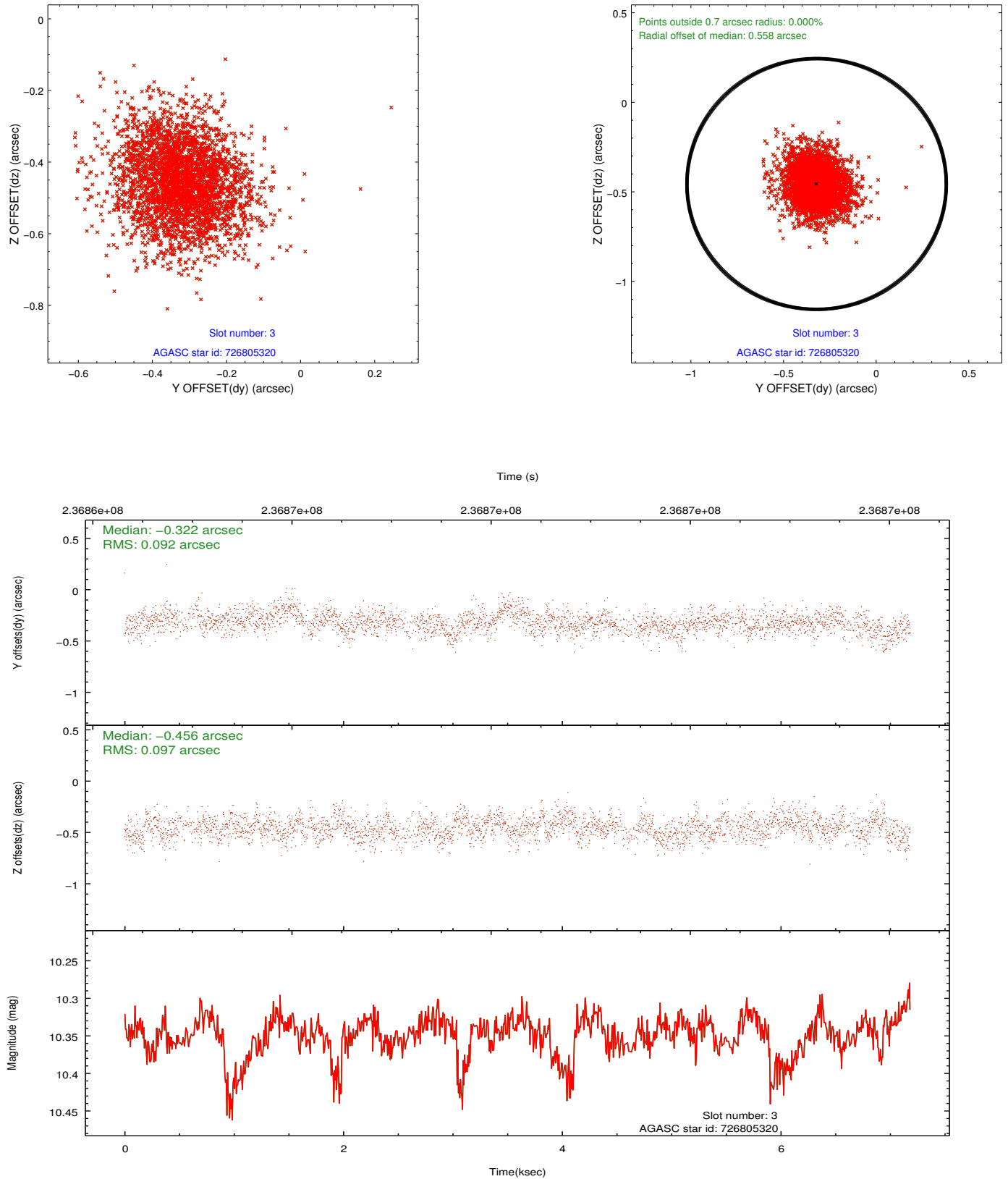


Slot Statistics

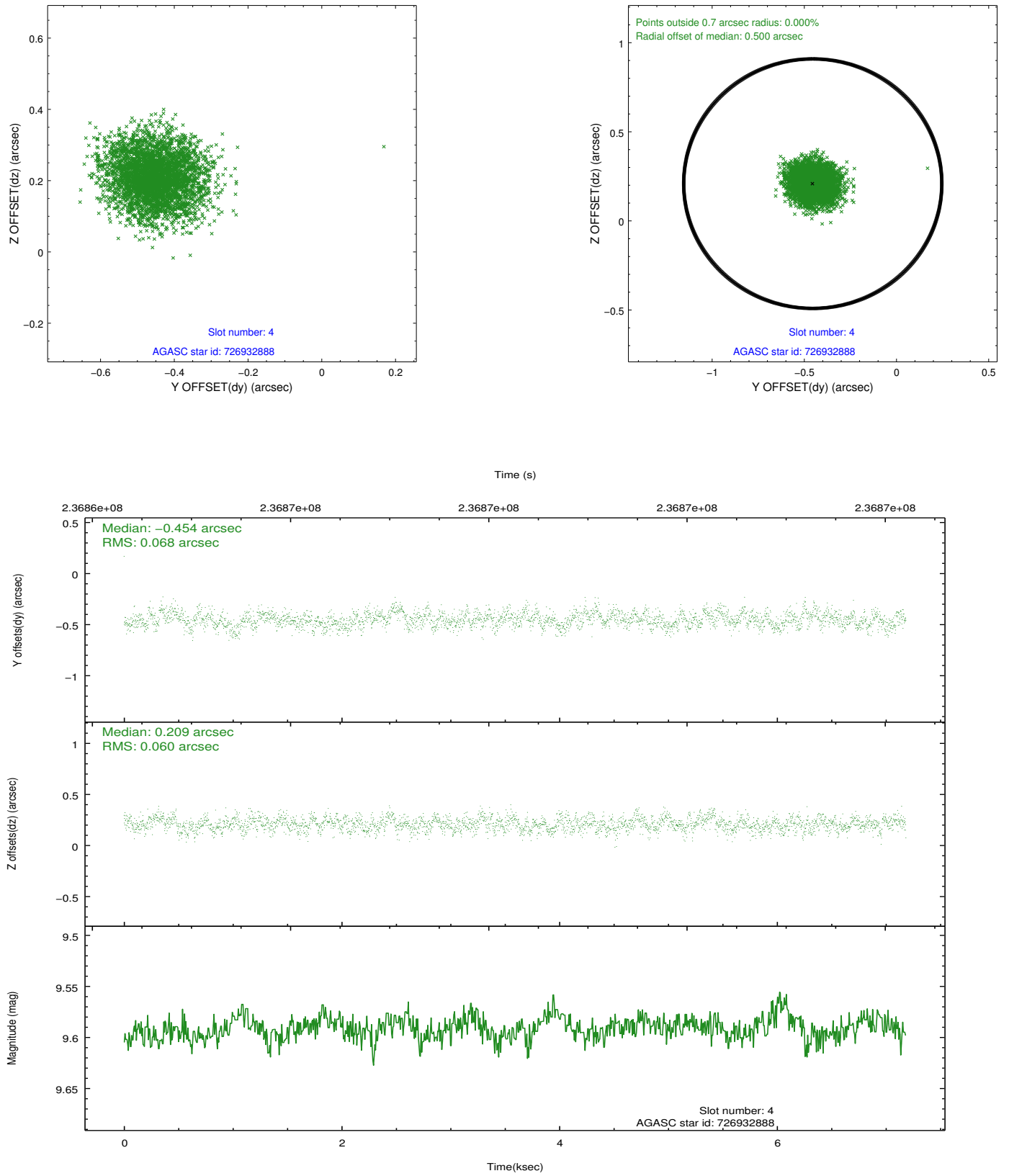
slot	status	id	mag	n_pts	med_dy	med_dz	dr1	dr2	ra	dec	mean_y	mean_z
0	FID	ACIS-S-2	7.10	1753	-0.042	-0.030	0.010	0.020	0.000000	0.000000	-760.17	-1730.84
1	FID	ACIS-S-4	7.21	1753	0.094	0.028	0.010	0.026	0.000000	0.000000	2152.85	176.93
2	FID	ACIS-S-5	7.23	1752	-0.084	0.011	0.009	0.018	0.000000	0.000000	-1812.06	171.42
3	BAD	726805320	10.35	3305	-0.322	-0.456	0.142	0.234	204.212849	-9.734967	480.23	-985.85
4	GUIDE	726932888	9.59	3499	-0.454	0.209	0.098	0.155	204.640397	-9.165404	-1981.52	-317.33
5	GUIDE	726935840	9.52	3502	0.603	-0.501	0.147	0.237	205.084608	-9.297514	-2109.91	1325.84
6	GUIDE	727320712	10.44	3497	0.132	0.566	0.159	0.263	204.468965	-10.254166	1891.23	540.27
7	GUIDE	726804384	10.60	3492	0.023	0.156	0.173	0.275	204.057952	-9.038299	-1654.11	-2412.42

2.4 Star Slots

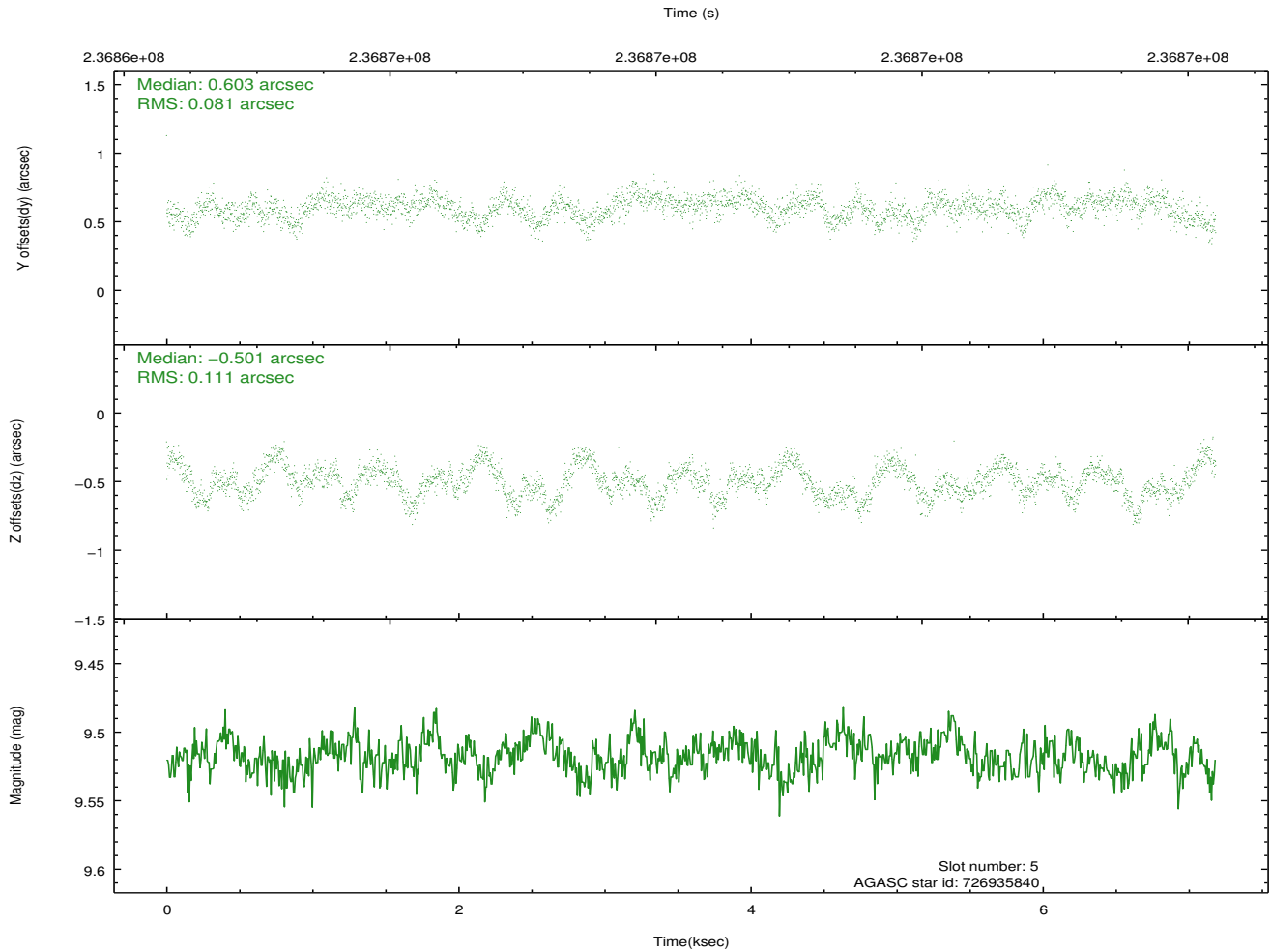
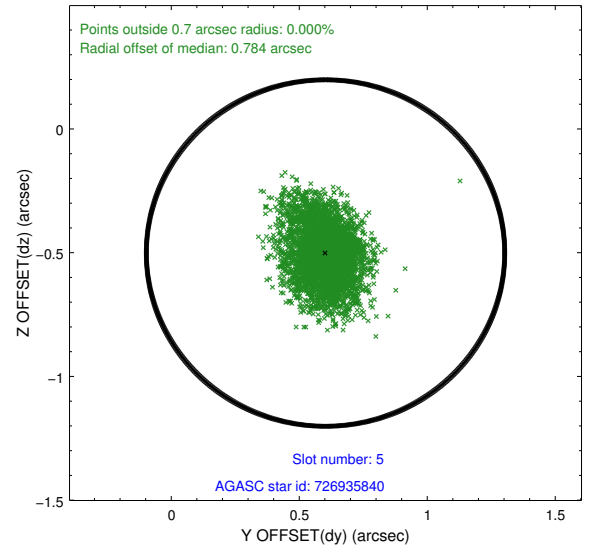
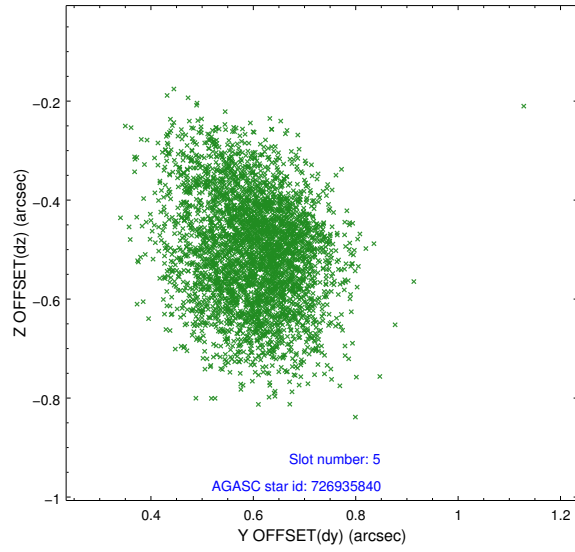
2.4.1 Slot 3



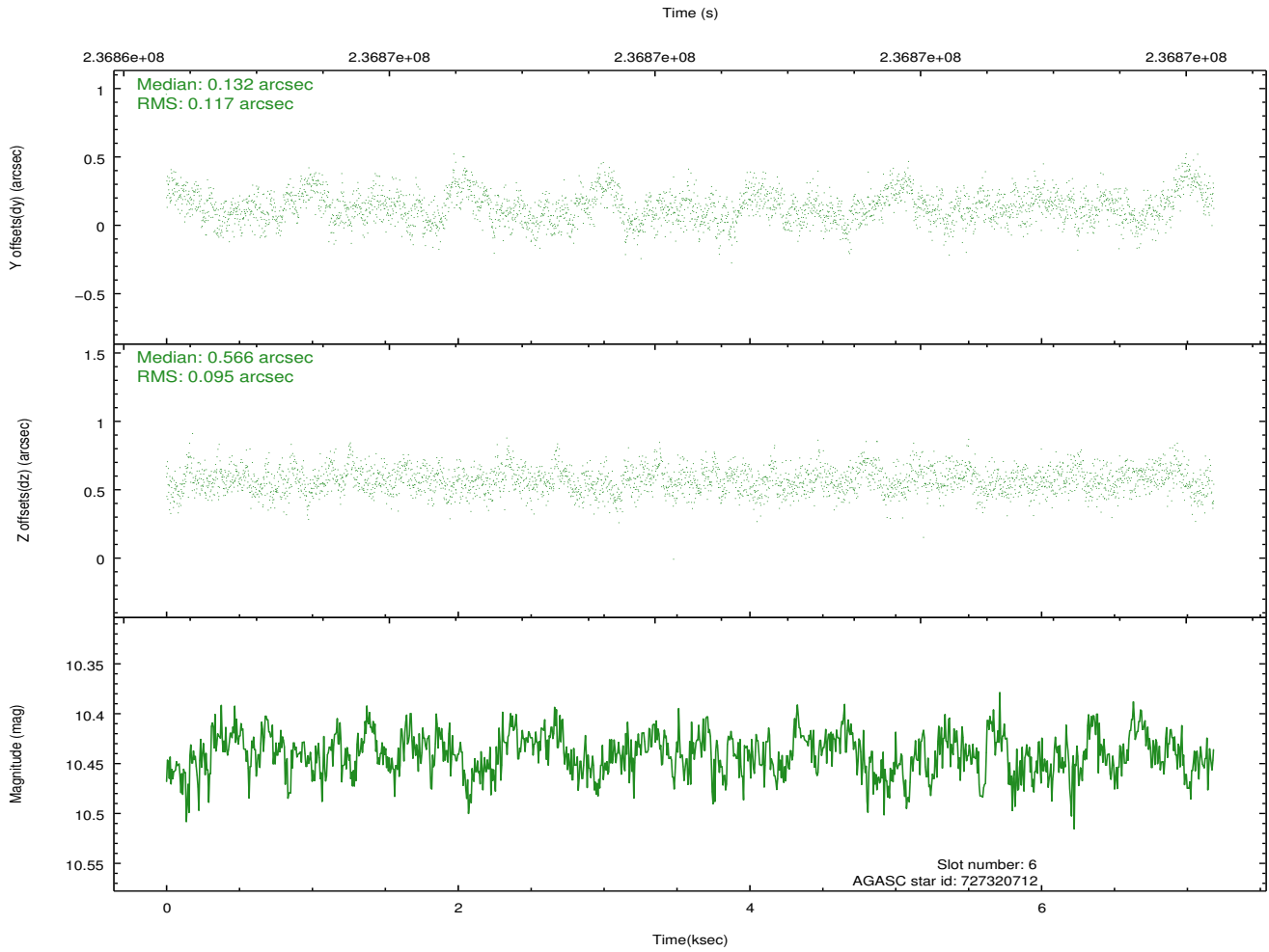
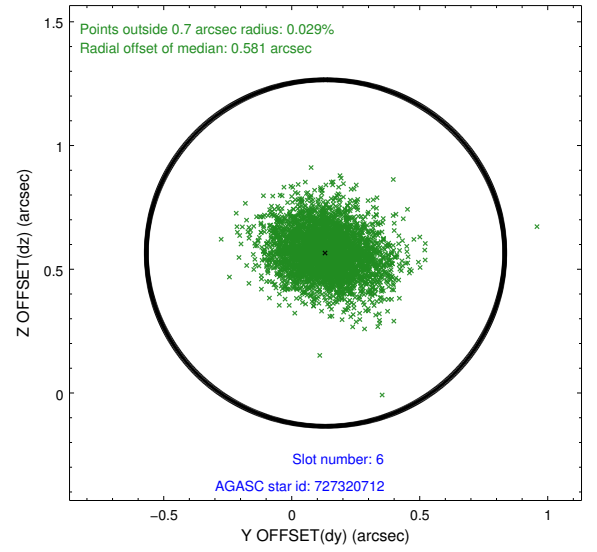
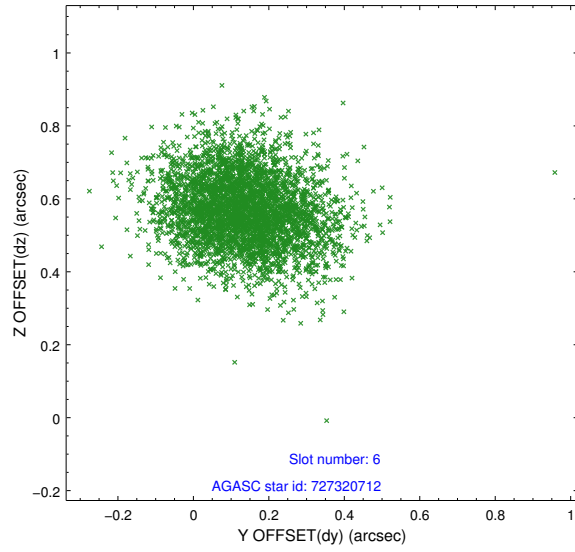
2.4.2 Slot 4



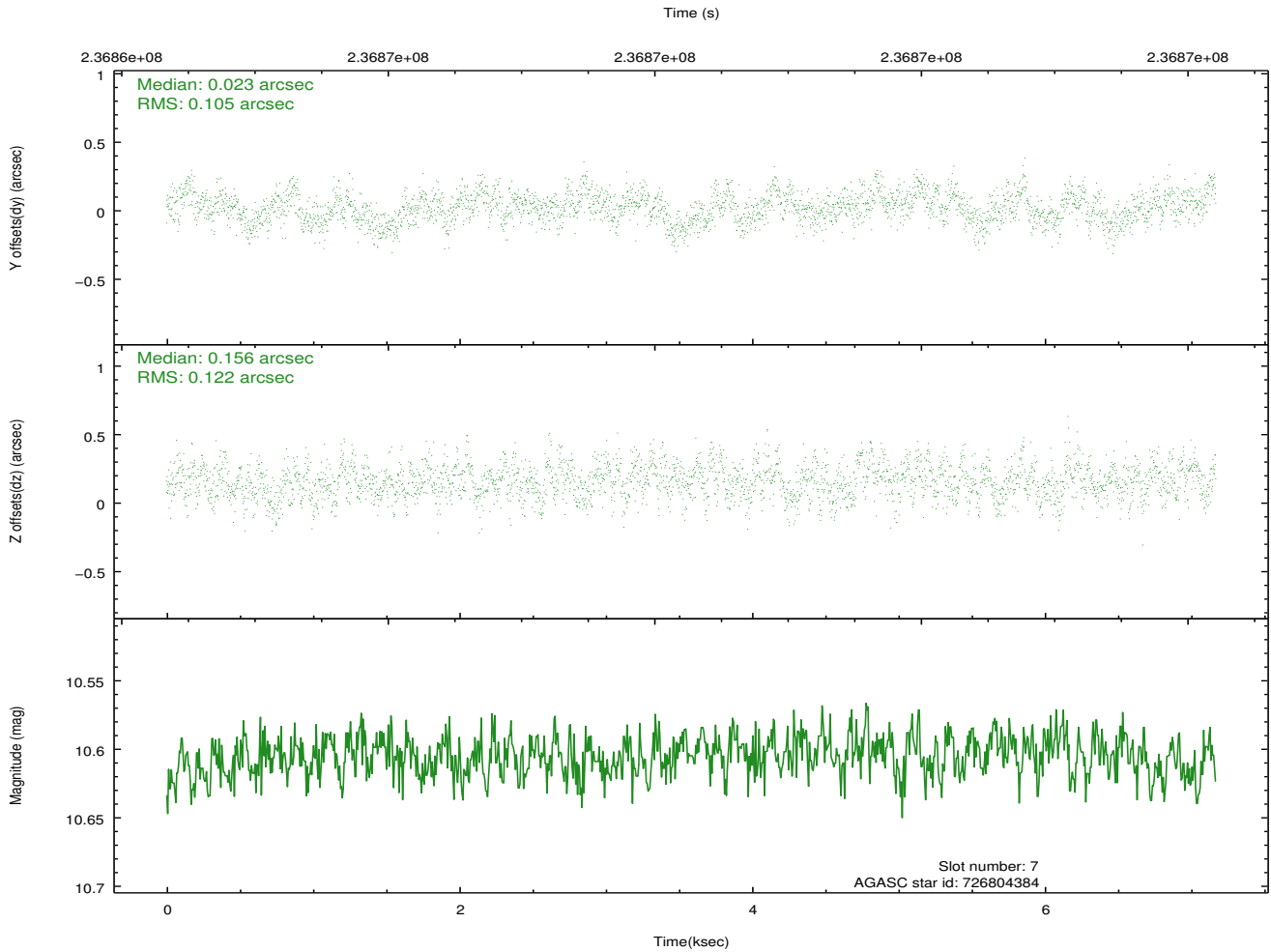
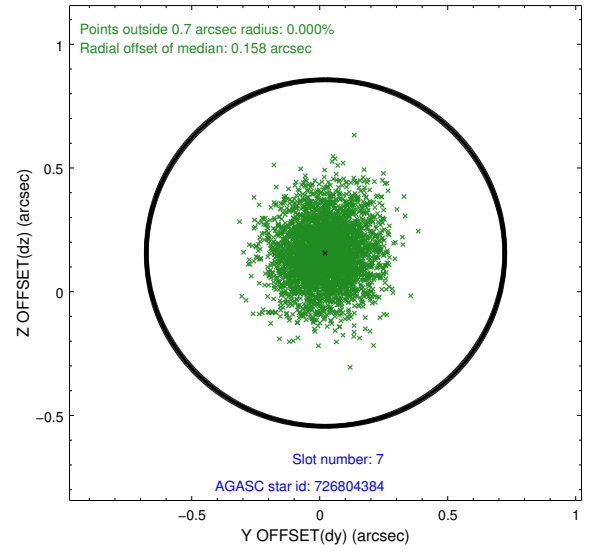
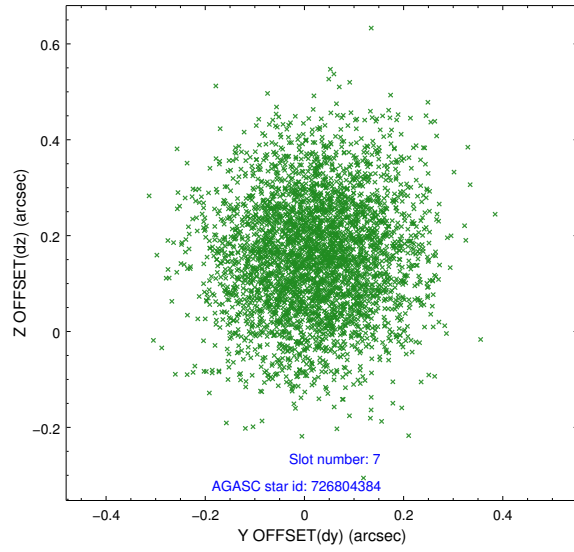
2.4.3 Slot 5



2.4.4 Slot 6

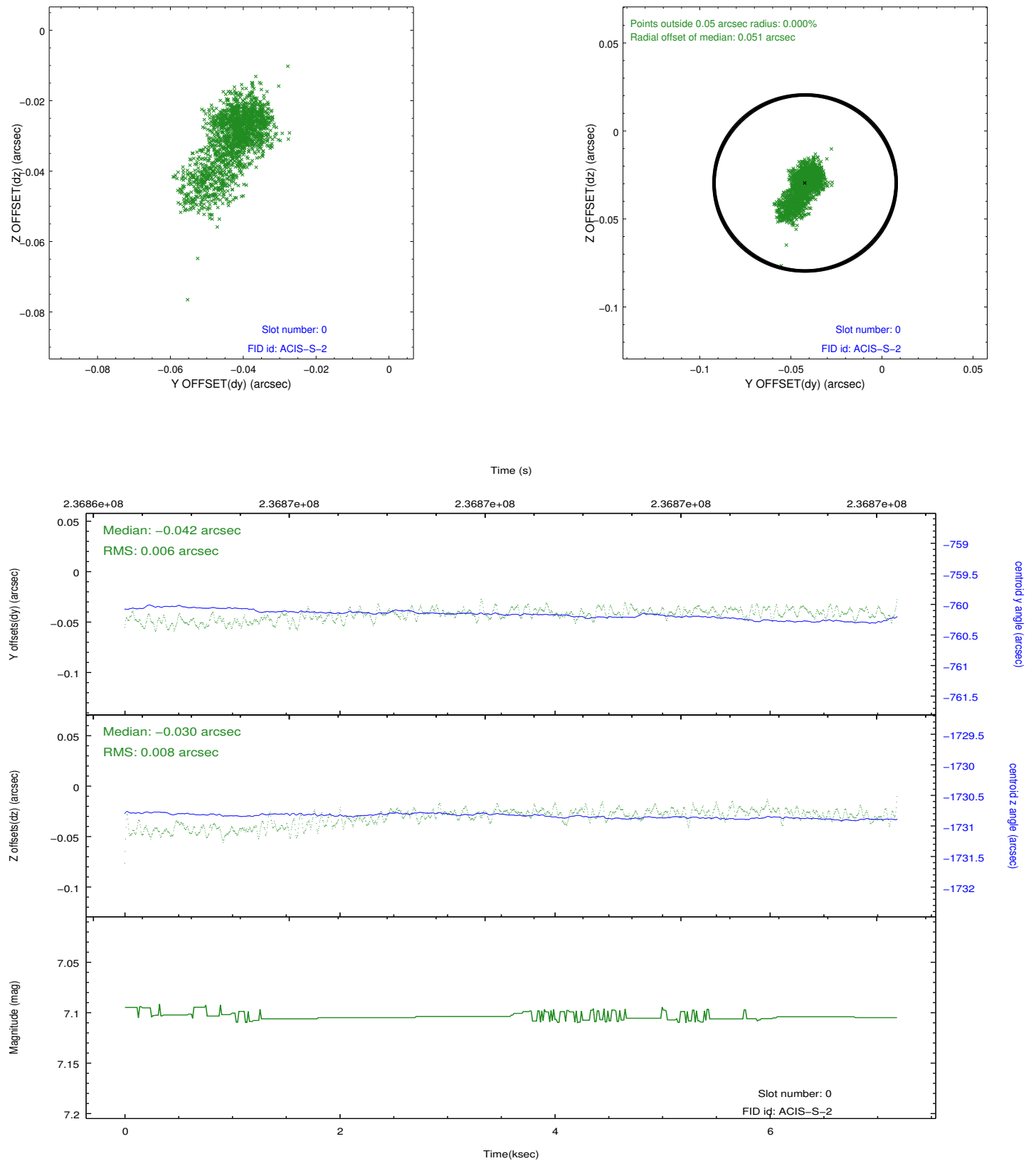


2.4.5 Slot 7

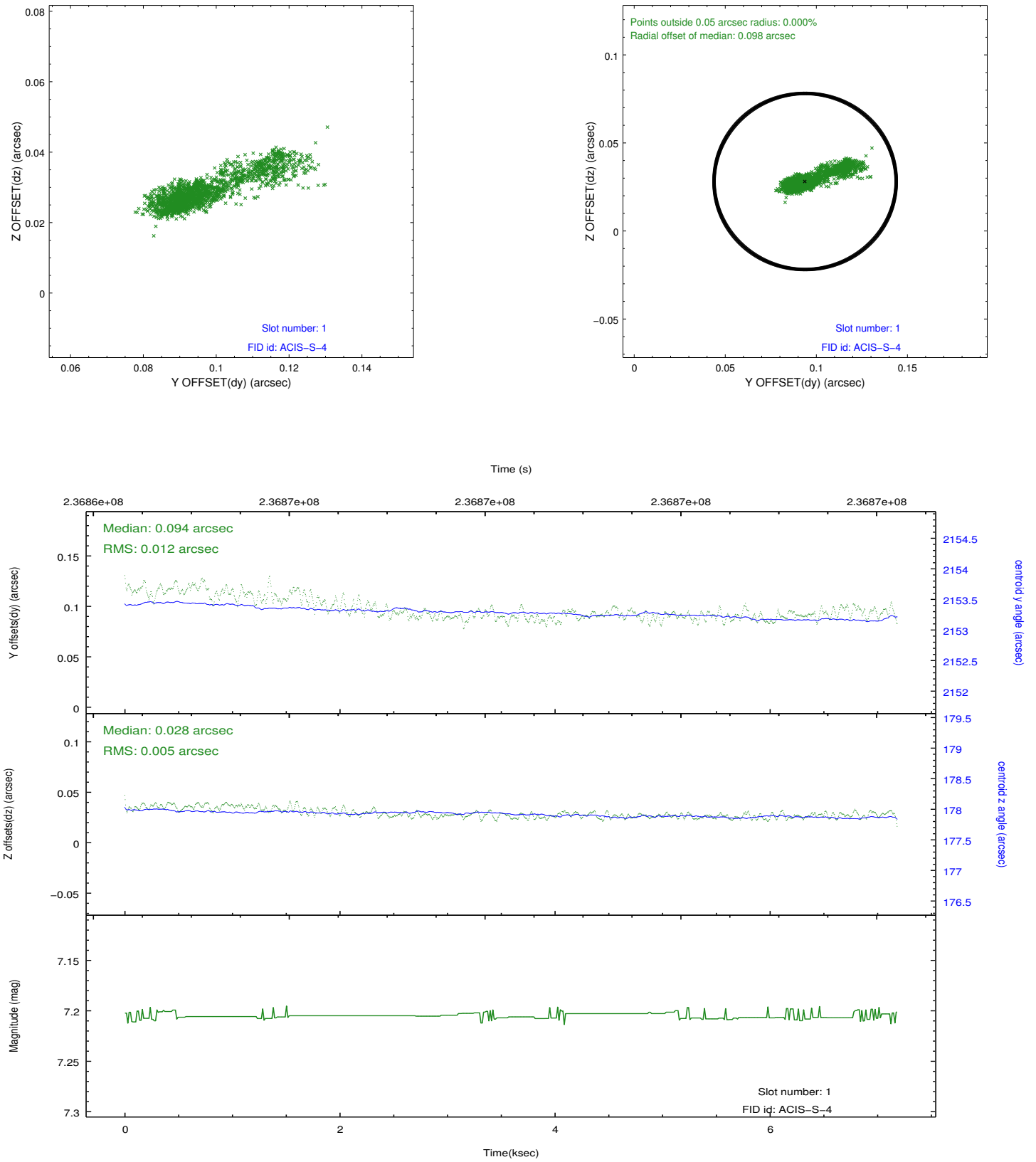


2.5 FID Slots

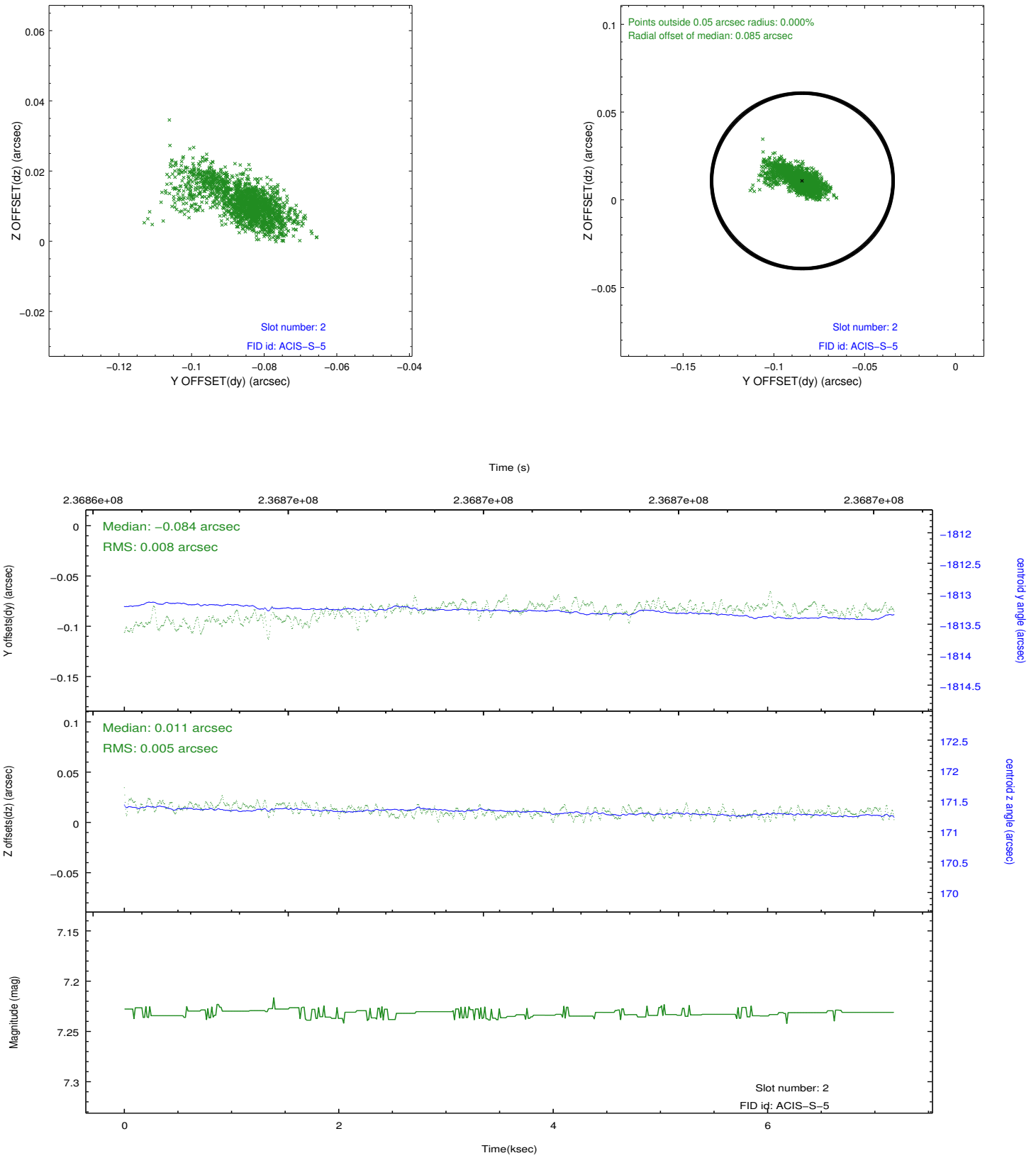
2.5.1 Slot 0



2.5.2 Slot 1



2.5.3 Slot 2



A Summary

A.1 Status

V&V Scientist	Jen Lauer
V&V Date (YYYY-MM-DD)	2013.01.17
V&V Edition	1
V&V Disposition and Status	OK
V&V Charge Time	7.180799

A.2 Comments

This is a moving target. Users will need to run `sso_freeze` or similar software to position the events in the reference frame of the target.