

# V&V Reference Report

## L2 ASCDS Version : 7.6.7.1

Observation 6320 - L2 Version 002  
Chandra X-Ray Center

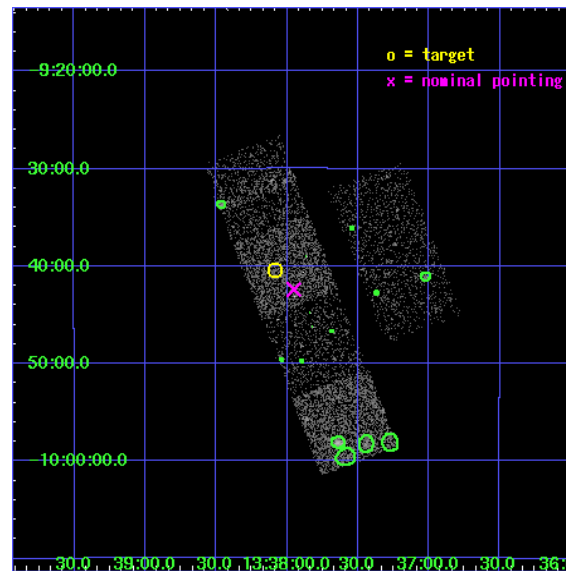
L2 Processing Date : Mar 11 2006

## Contents

<b>1</b>	<b>Front</b>	<b>2</b>
<b>2</b>	<b>OBI</b>	<b>3</b>
2.1	OBI . . . . .	3
2.1.1	Images . . . . .	3
2.1.2	Bias . . . . .	3
2.1.3	Parameters . . . . .	4
2.1.4	Events . . . . .	4
2.2	Compared Parameters . . . . .	5
2.3	Aspect . . . . .	6
2.4	Star Slots . . . . .	9
2.4.1	Slot 3 . . . . .	9
2.4.2	Slot 4 . . . . .	10
2.4.3	Slot 5 . . . . .	11
2.4.4	Slot 6 . . . . .	12
2.4.5	Slot 7 . . . . .	13
2.5	FID Slots . . . . .	14
2.5.1	Slot 0 . . . . .	14
2.5.2	Slot 1 . . . . .	15
2.5.3	Slot 2 . . . . .	16
<b>3</b>	<b>Point Sources</b>	<b>17</b>
<b>A</b>	<b>Summary</b>	<b>18</b>
A.1	Status . . . . .	18
A.2	Comments . . . . .	18

# 1 Front

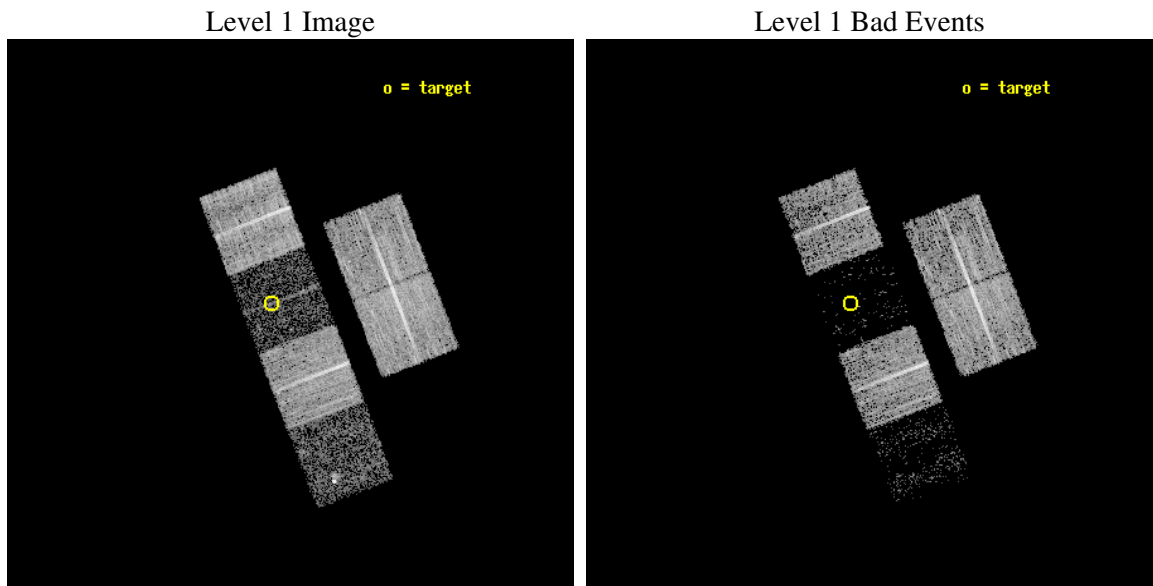
seq_num	100060
obs_id	6320
title	Comet 9P/Tempel 1 During the Deep Impact Encounter
observer	Dr. Carey Lisse
object	9P/Tempel 1
dtcycle	0
cycle	P
ra_targ	204.520953
dec_targ	-9.673485
ra_nom	204.48792545331
dec_nom	-9.7067207811068
roll_nom	248.85645561857
revision	2
ontime	7177.5999732614
livetime	7086.7128805681
ontime2	7177.5999732614
ontime3	7177.5999732614
ontime5	7177.5999732614
ontime6	7177.5999732614
ontime7	7177.5999732614
ontime8	7177.5999732614
l2events	10763



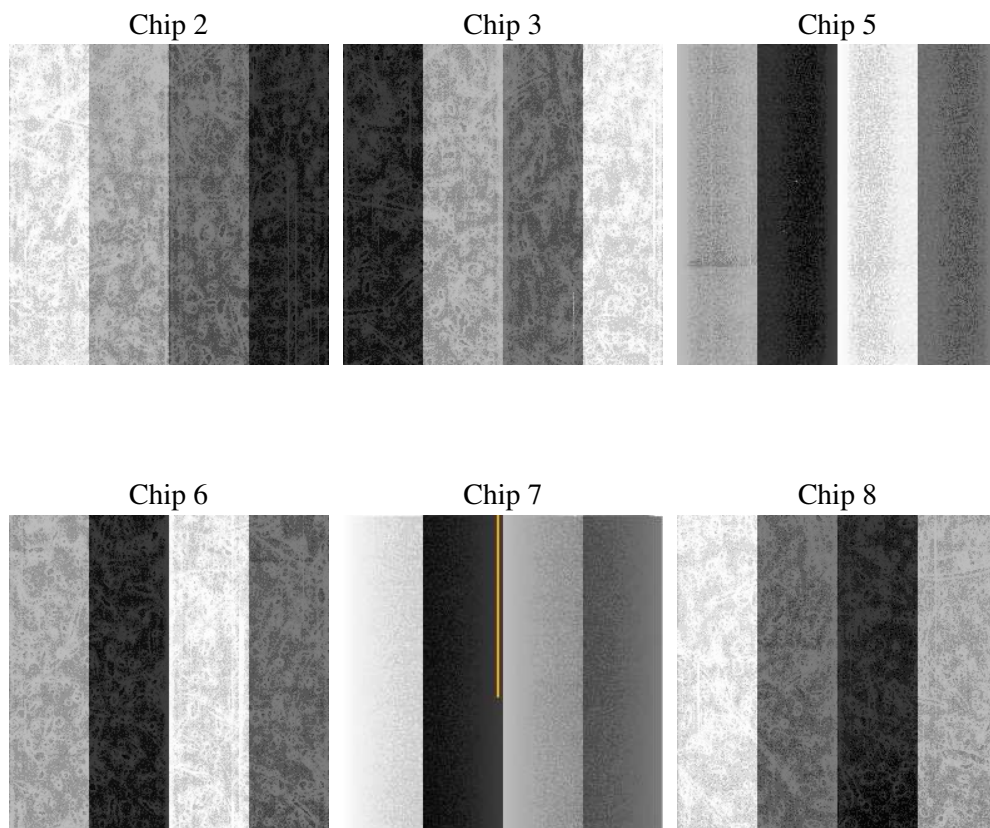
## 2 OBI

### 2.1 OBI

#### 2.1.1 Images



#### 2.1.2 Bias



### 2.1.3 Parameters

obi_num	0
ascdsver	7.6.7.1
caldsver	3.2.1
date	2006-03-12T03:23:42
revision	2

sched_exp_time	7000.000000
ontime	7509.4051332176
ontime2	7509.4051133394
ontime3	7509.4051133394
ontime5	7509.4051332176
ontime6	7509.4051133394
ontime7	7509.4051332176
ontime8	7509.4051133394
l1events	152089

### 2.1.4 Events

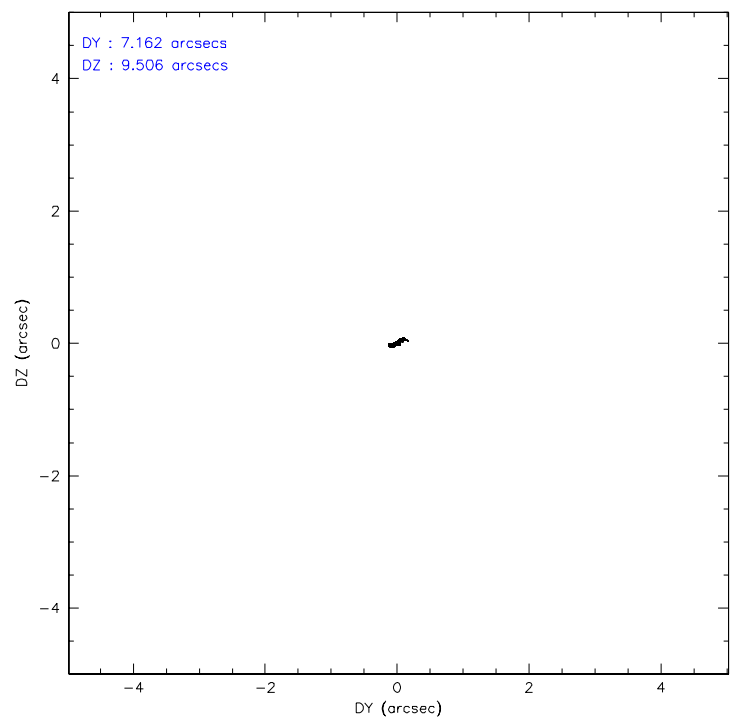
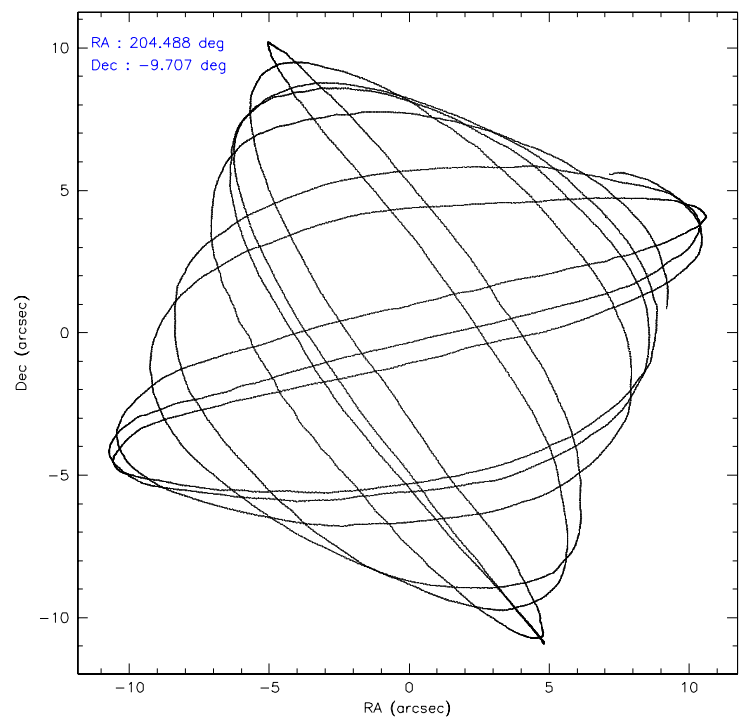
	ccd 2	ccd 3	ccd 5	ccd 6	ccd 7	ccd 8
level 1 events	38795	32059	6604	32728	4426	37477
rejected events	37199	30895	2198	31199	1068	28086
rejected %	95%	96%	33%	95%	24%	74%

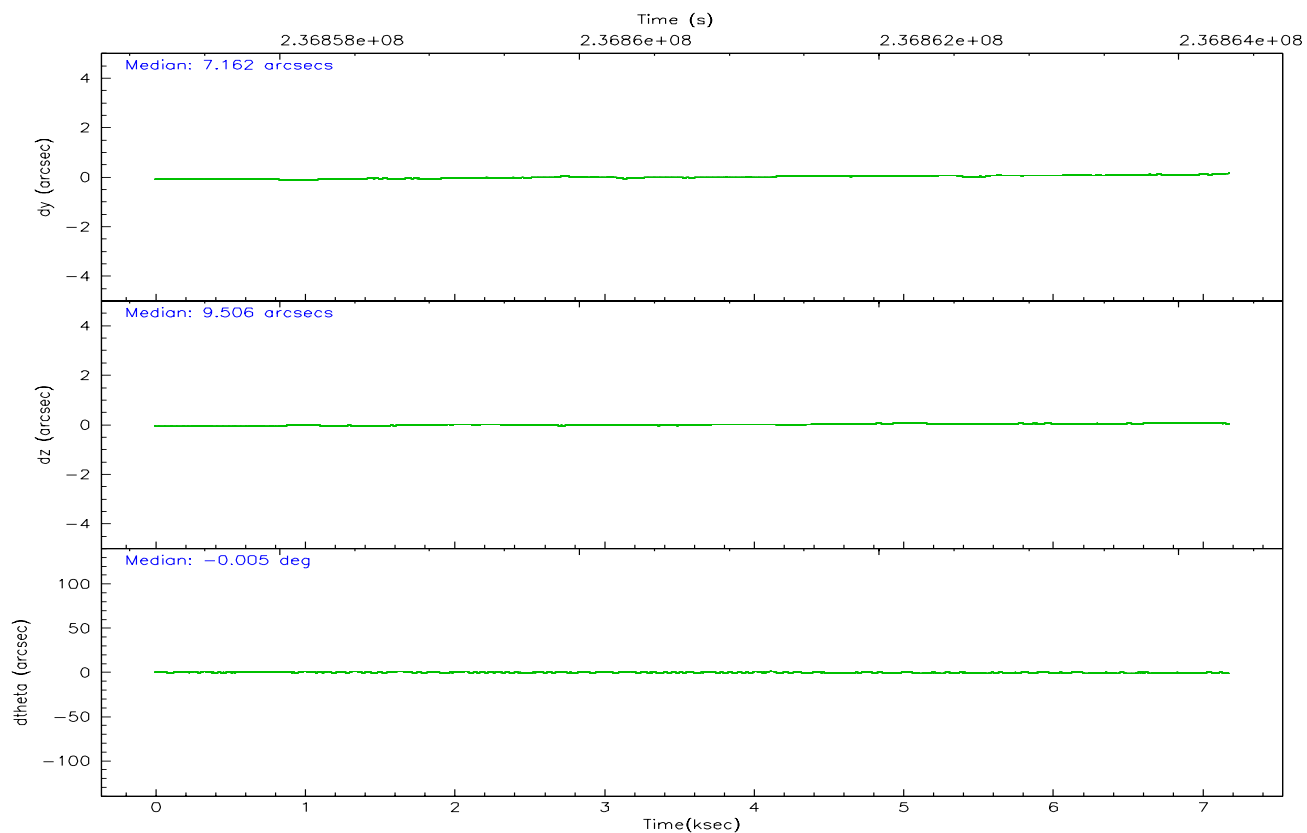
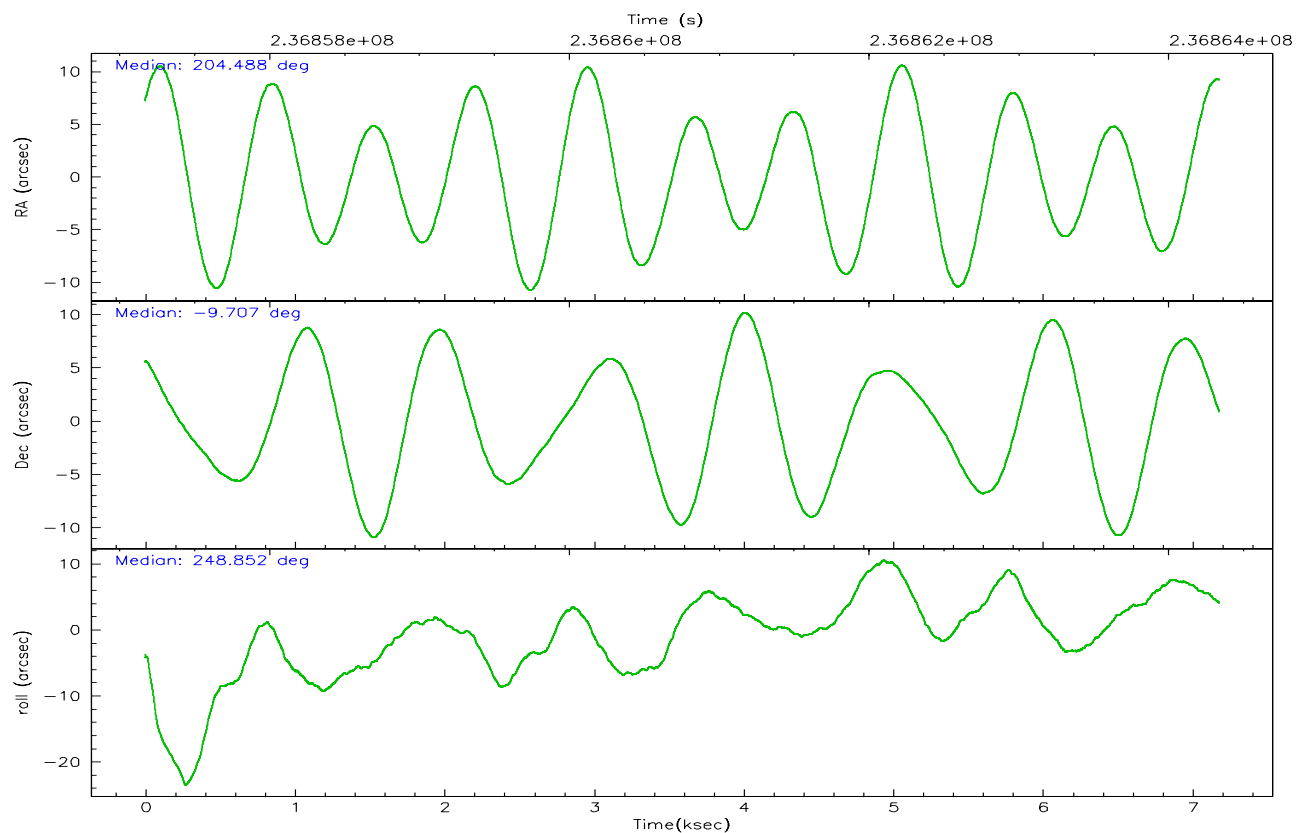
	ccd 2	ccd 3	ccd 5	ccd 6	ccd 7	ccd 8
grade 0 events	634	602	1357	811	821	2774
	1%	1%	20%	2%	18%	7%
grade 1 events	9	13	19	9	22	32
	0%	0%	0%	0%	0%	0%
grade 2 events	453	154	1811	269	1233	2206
	1%	0%	27%	0%	27%	5%
grade 3 events	199	196	508	217	538	1123
	0%	0%	7%	0%	12%	2%
grade 4 events	221	173	405	200	500	1029
	0%	0%	6%	0%	11%	2%
grade 5 events	54	25	286	31	112	203
	0%	0%	4%	0%	2%	0%
grade 6 events	153	86	545	108	415	2670
	0%	0%	8%	0%	9%	7%
grade 7 events	37072	30810	1673	31083	785	27440
	95%	96%	25%	94%	17%	73%

## 2.2 Compared Parameters

Parameter	Planned	Actual	Parameter	Planned	Actual
Instrument	ACIS	ACIS	Obspar format version number	6	6
Detector	ACIS-235678	ACIS-235678	Obspar file type	PREDICTED	ACTUAL
Grating	NONE	NONE	Obspar update status	NONE	UPDATED
Data mode	VFAINT	VFAINT	On-chip summing requested	N	N
Observation mode	POINTING	POINTING	Subarray requested	NONE	NONE
Pointing RA	204.483239	204.4879254533126	Alternating exposures requested	N	N
Pointing Dec	-9.679914	-9.706720781106768	Primary exposure time	0.000000	3.2
Pointing Roll	248.699029	248.856455618574			
SIM focus pos (mm)	-0.684267	-0.6828225247311905			
SIM defocus (mm)	0	0.001444936568705701			
SIM translation stage pos (mm)	-190.132523	-190.145094680475			
SIM translation stage offset (mm)	0	0.01257209746719923			
Observation start time	236857343.184000	236856967.24789			
Observation start date	2005-07-04T09:41:19	2005-07-04T09:36:07			
Observation end time	236864343.184000	236864477.42324			
Observation end date	2005-07-04T11:37:59	2005-07-04T11:41:17			
Read mode	TIMED	TIMED			

## 2.3 Aspect





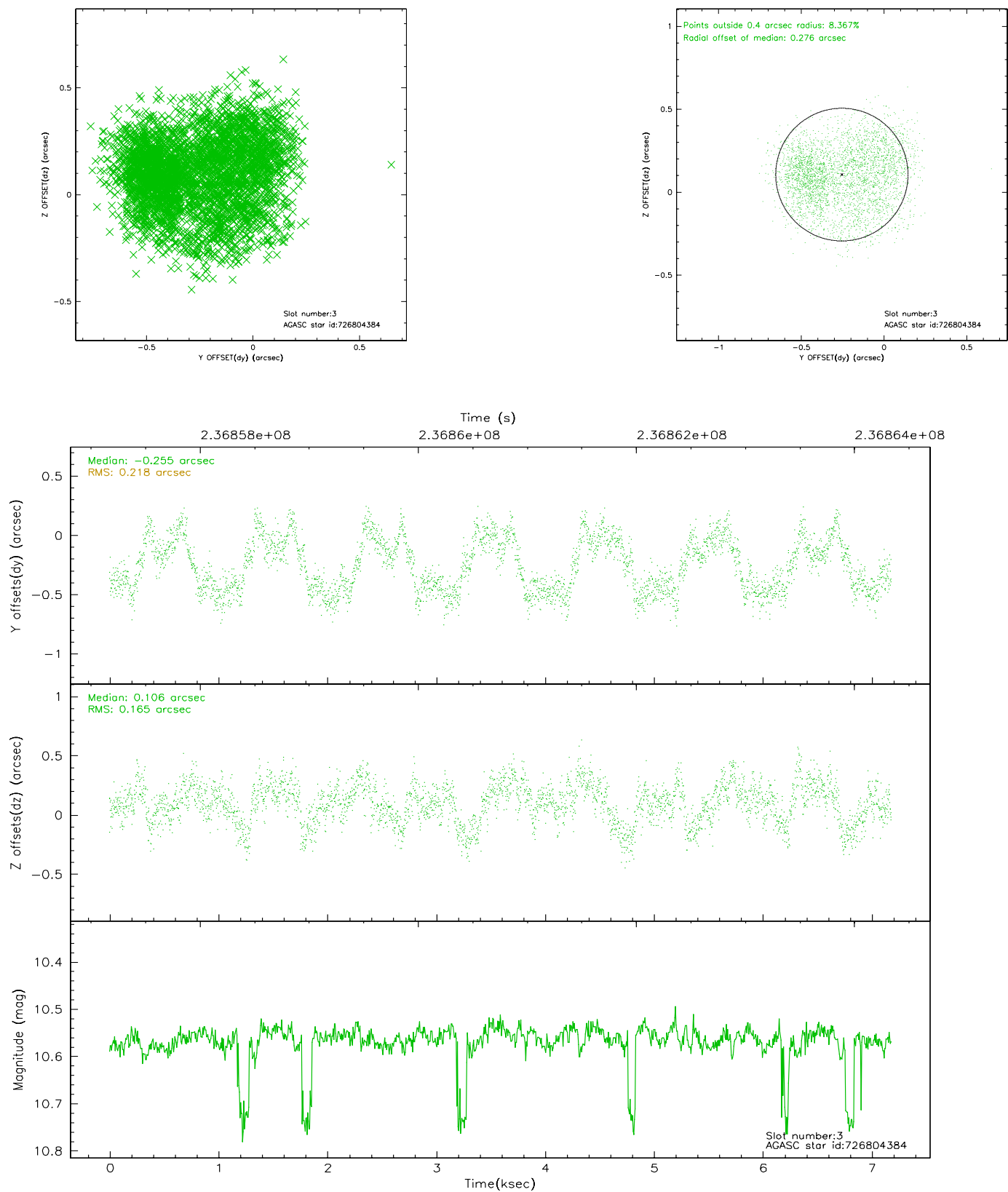
### Slot Statistics

slot	status	id	mag	n_pts	med_dy	med_dz	dr1	dr2	ra	dec	mean_y	mean_z
0	FID	ACIS-S-2	7.10	1752	-0.038	-0.021	0.006	0.010	0.000000	0.000000	-759.93	-1730.68
1	FID	ACIS-S-4	7.21	1752	0.066	0.024	0.005	0.009	0.000000	0.000000	2153.06	177.07
2	FID	ACIS-S-5	7.23	1751	-0.059	0.006	0.006	0.010	0.000000	0.000000	-1811.80	171.57
3	GUIDE	726804384	10.56	3490	-0.255	0.106	0.303	0.436	204.057952	-9.038299	-1601.45	-2247.96
4	GUIDE	726805320	10.35	3498	-0.247	0.164	0.192	0.297	204.212849	-9.734967	533.47	-822.24
5	GUIDE	726932400	10.44	3502	0.038	-0.106	0.181	0.295	204.323420	-9.942274	1086.76	-185.04
6	GUIDE	726935840	9.52	3504	0.542	-0.498	0.133	0.229	205.084608	-9.297514	-2055.72	1490.52
7	GUIDE	727320712	10.45	3492	-0.053	0.353	0.194	0.313	204.468965	-10.254166	1944.45	704.82

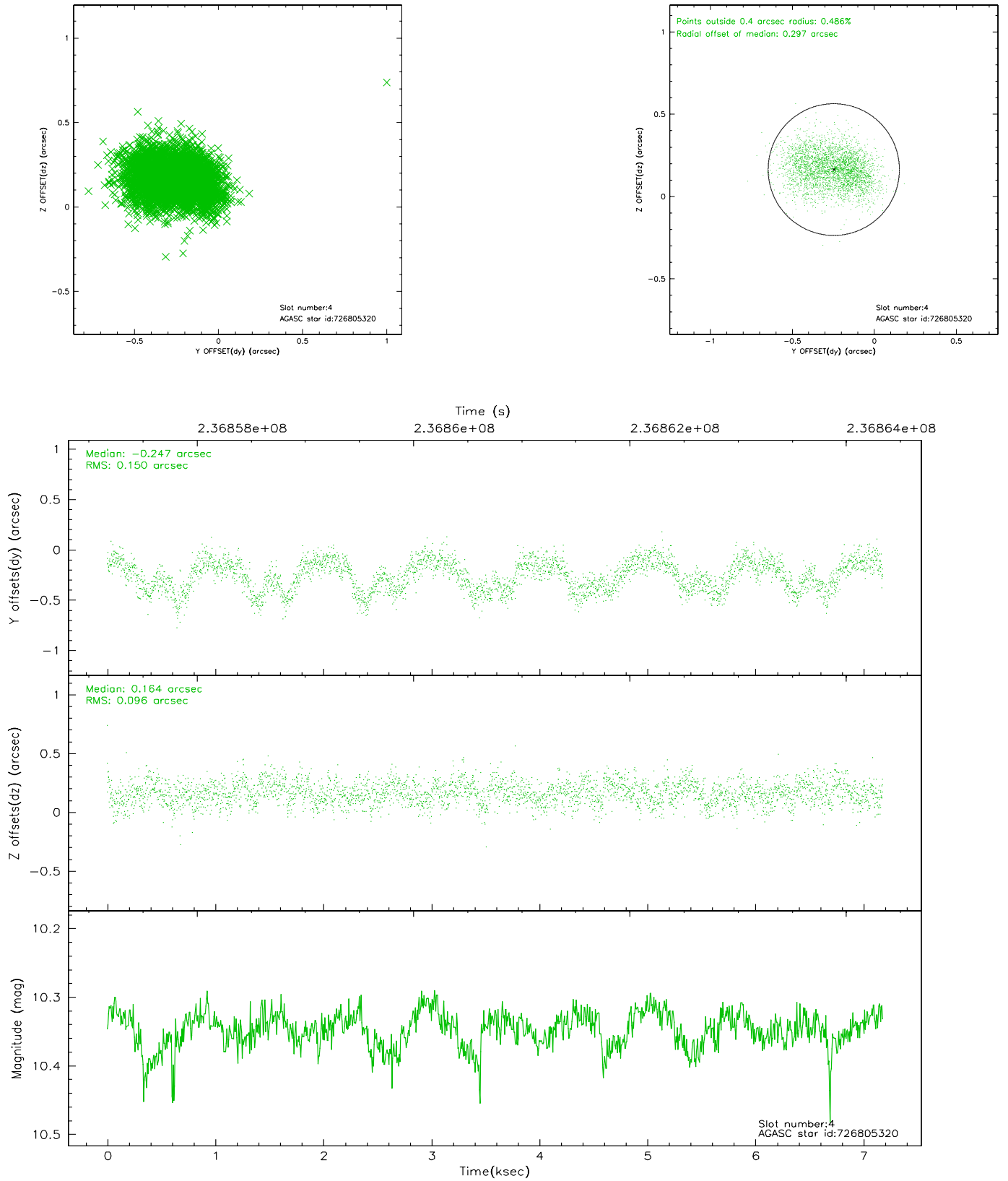


## 2.4 Star Slots

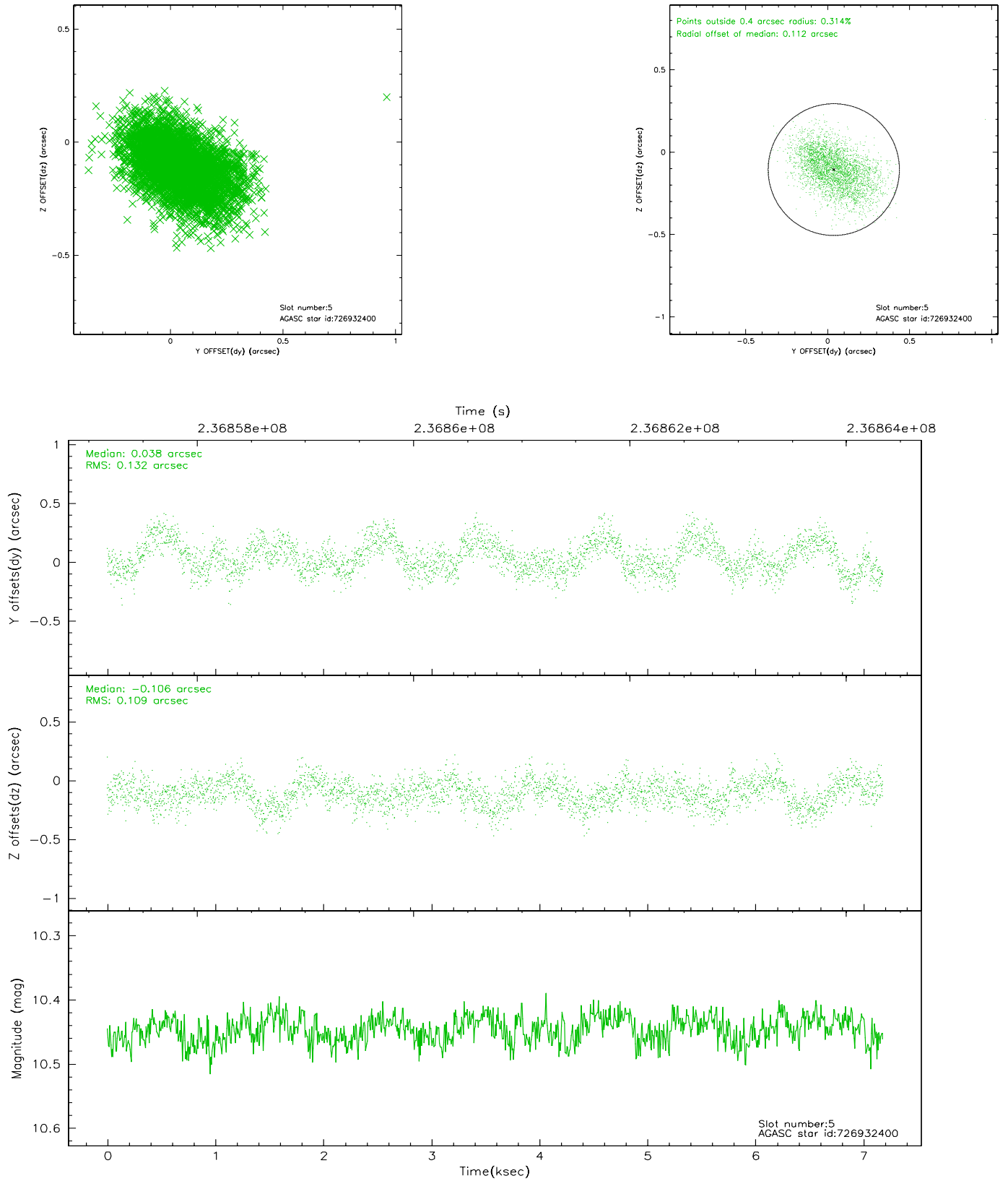
### 2.4.1 Slot 3



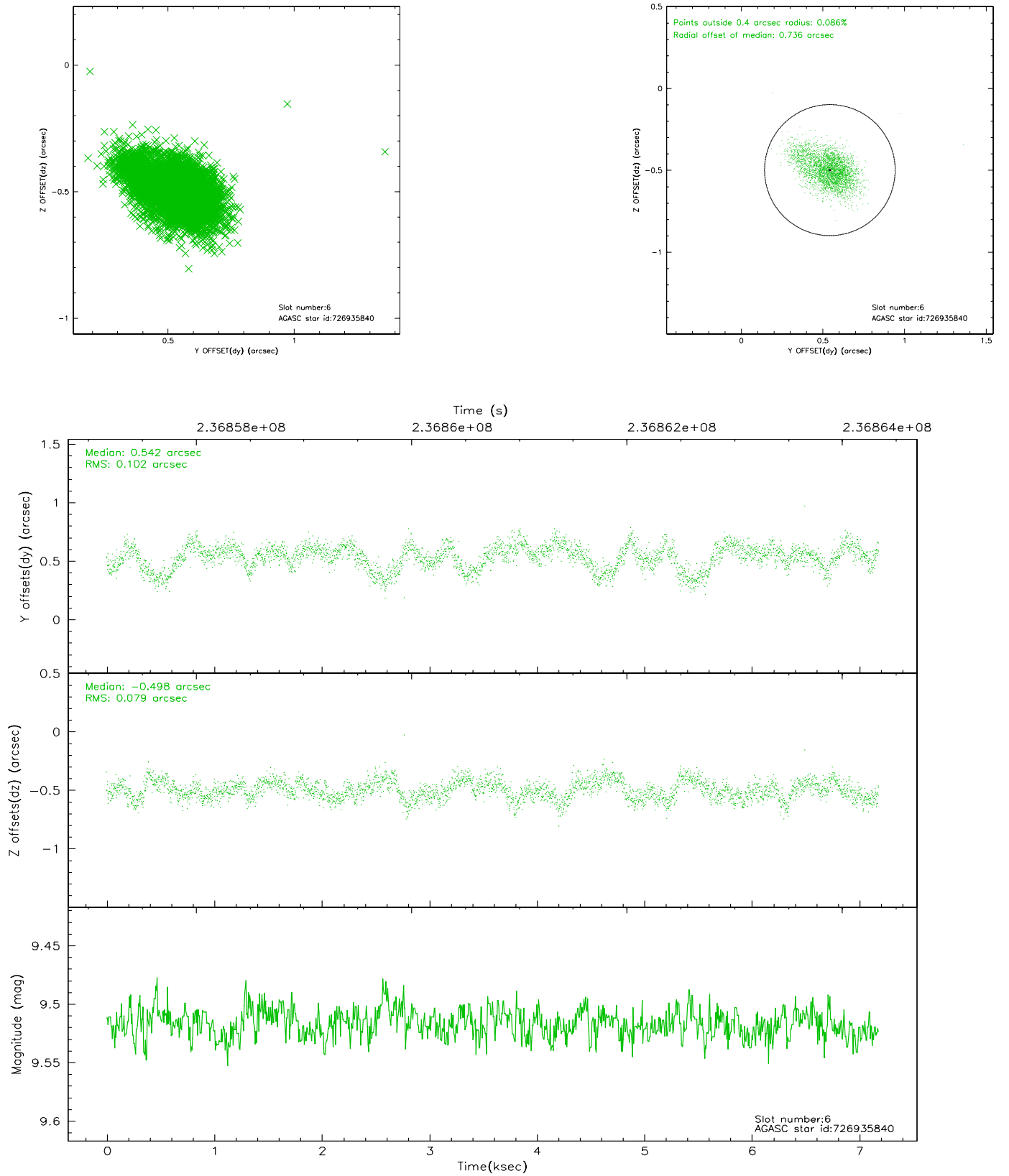
## 2.4.2 Slot 4



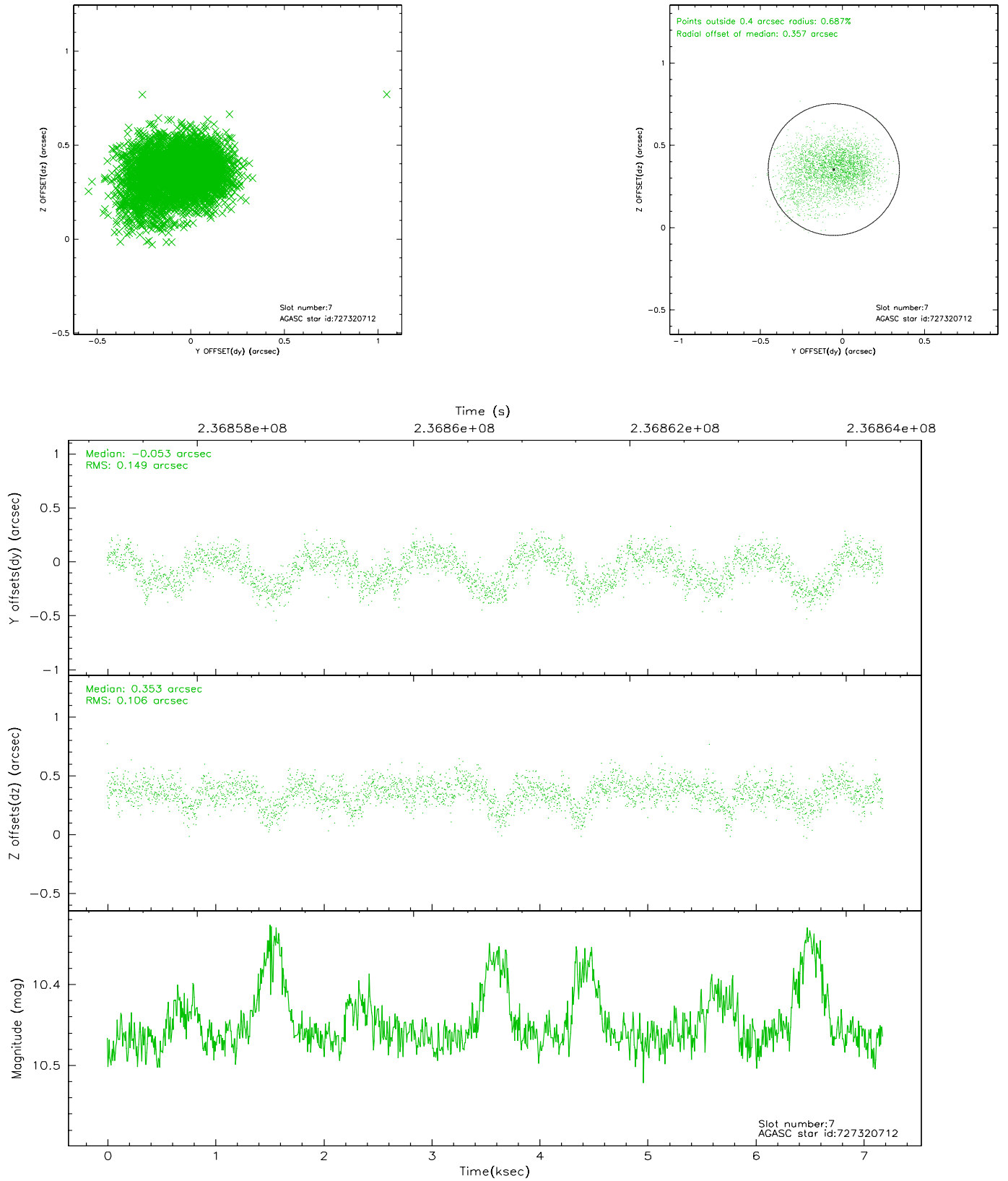
### 2.4.3 Slot 5



## 2.4.4 Slot 6

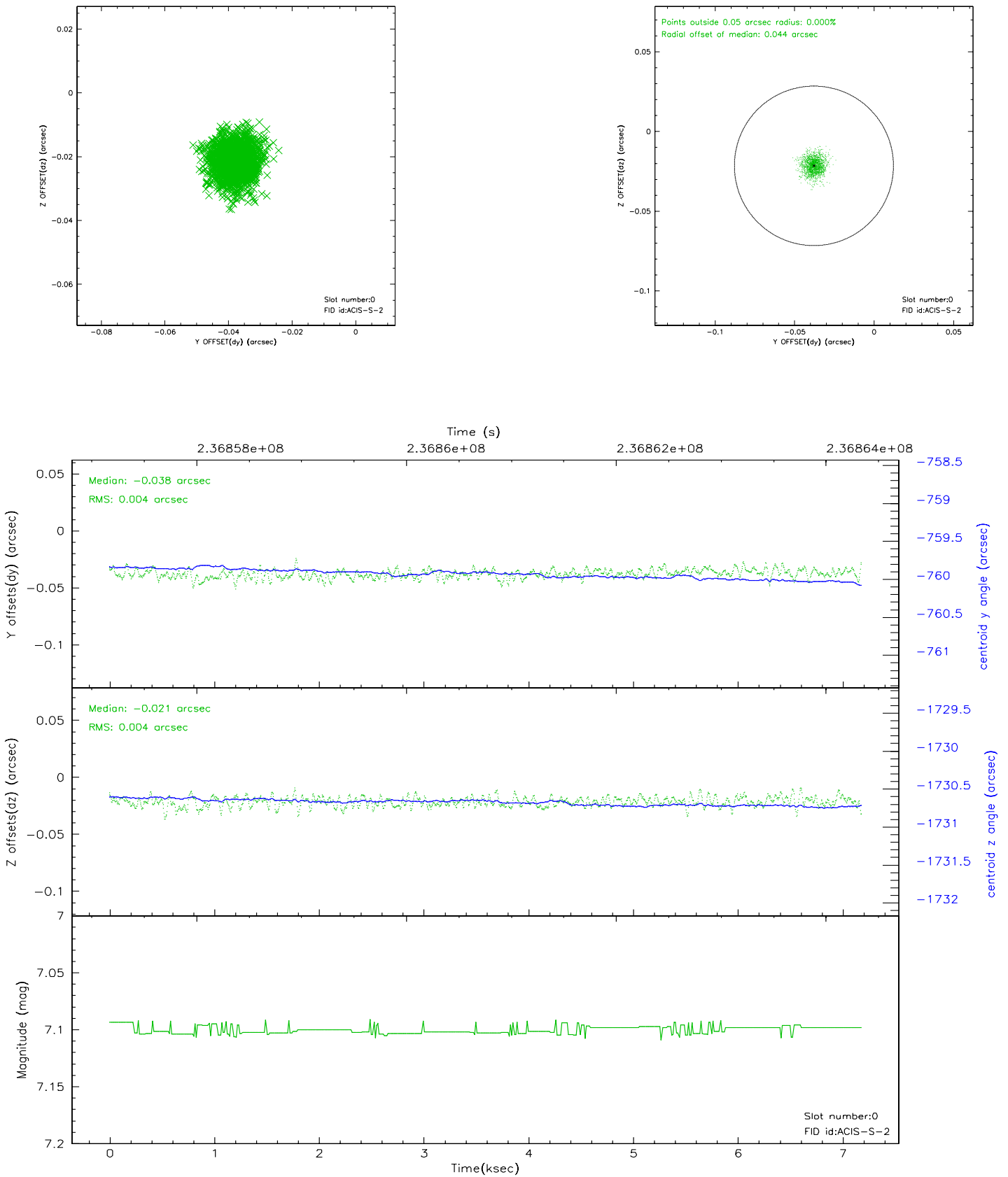


## 2.4.5 Slot 7

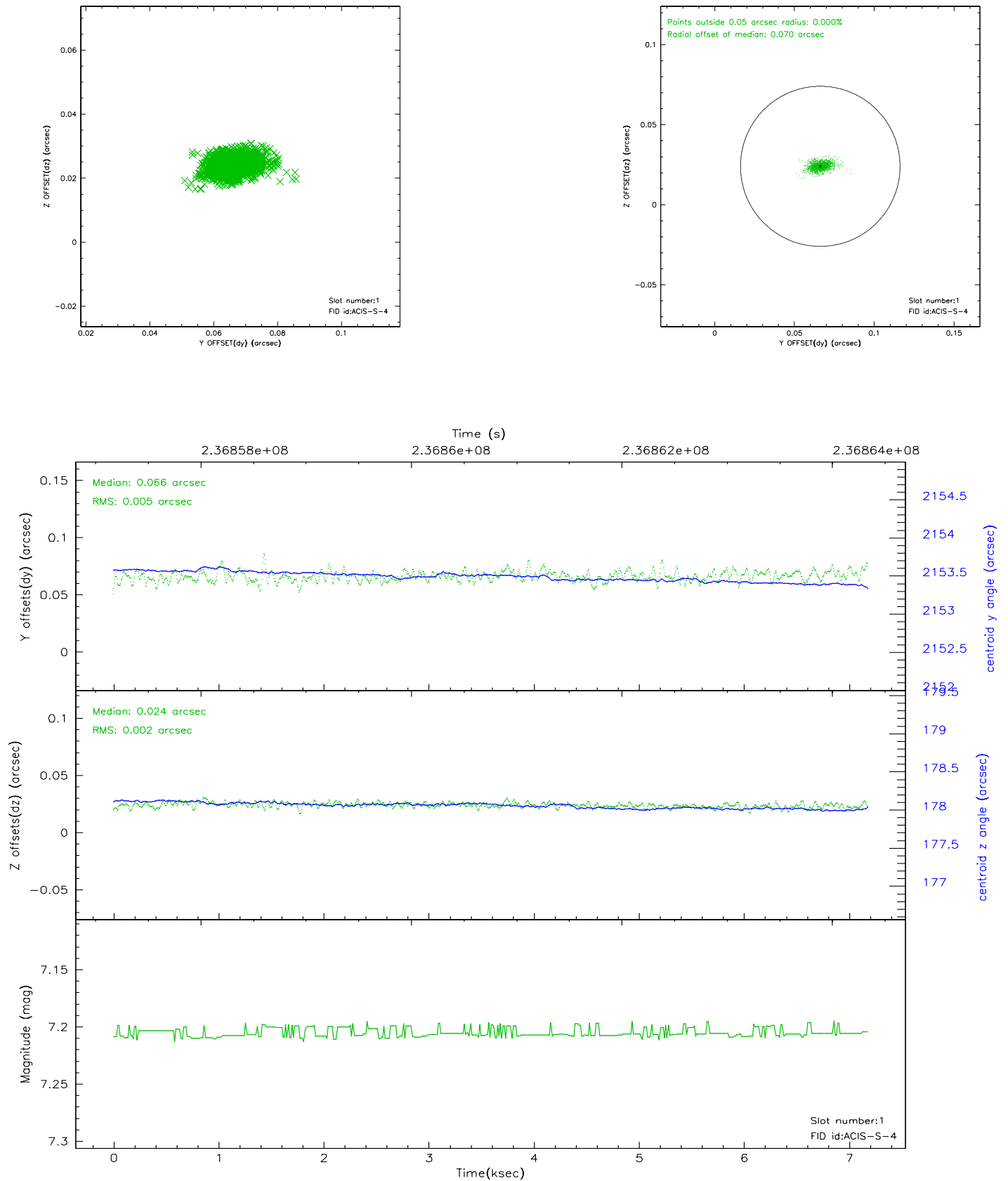


## 2.5 FID Slots

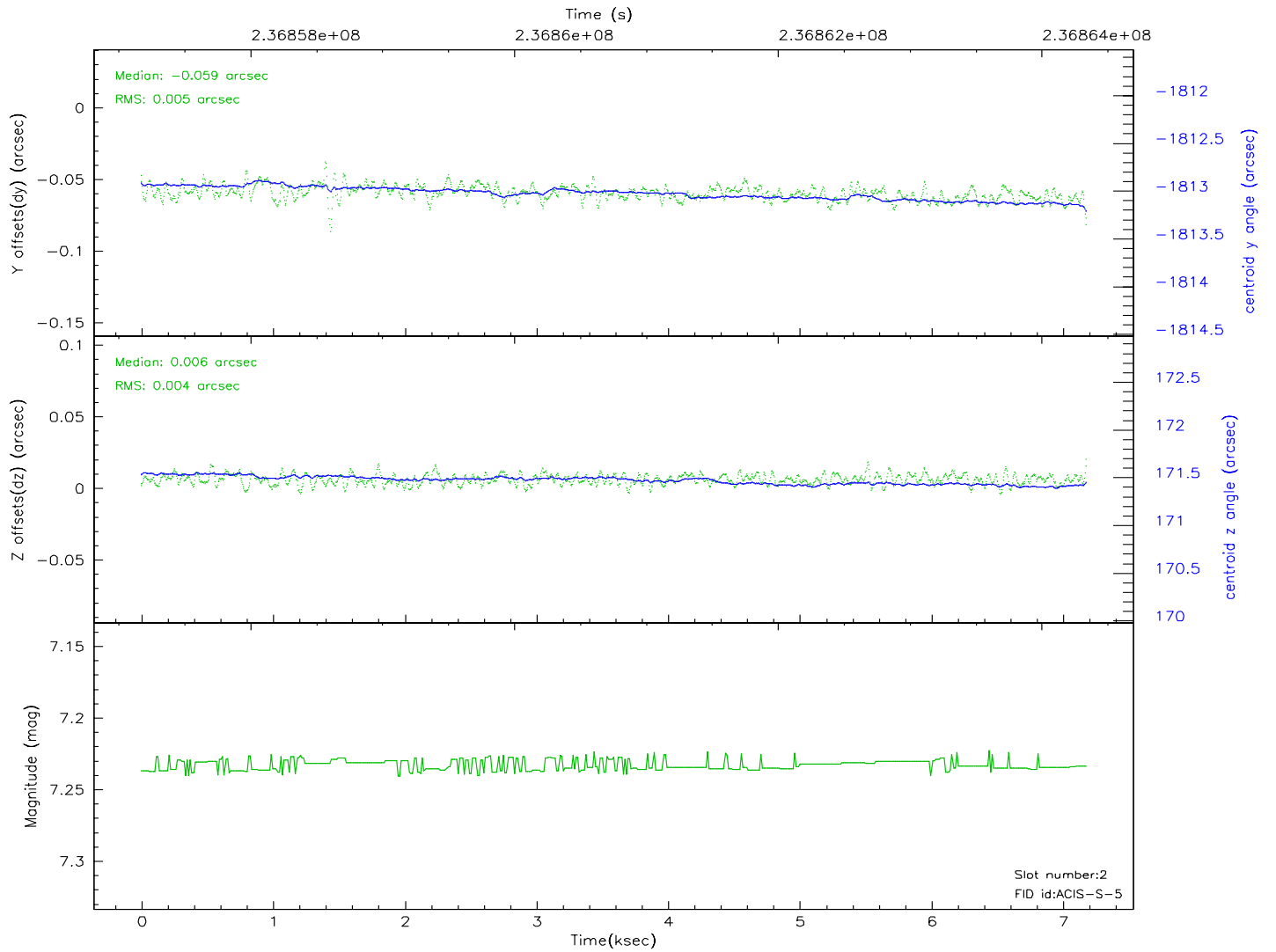
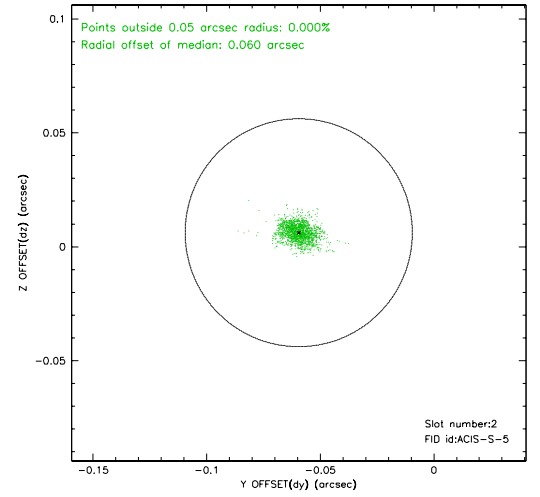
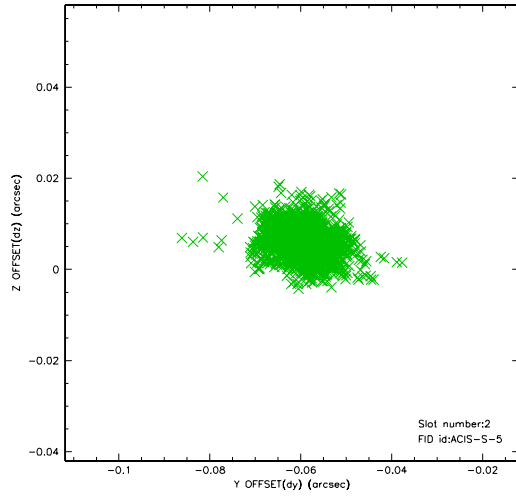
### 2.5.1 Slot 0



## 2.5.2 Slot 1

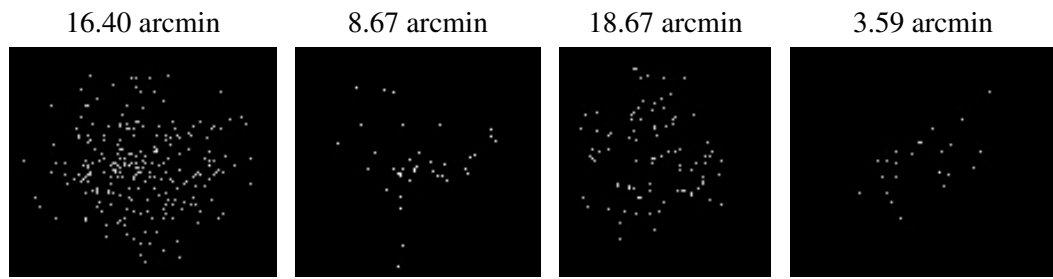


### 2.5.3 Slot 2





### 3 Point Sources



# A Summary

## A.1 Status

V&V Scientist	Jen Lauer
V&V Date (YYYY-MM-DD)	2006.03.13
V&V Edition	1
V&V Disposition and Status	OK
V&V Charge Time	7.177599

## A.2 Comments

Comments for Obi 0

Star in slot 3 has an RMS deviation > 0.200000 arcsec

Target coordinates for all Comet Tempel 1 observations are the same, and not necessarily correct. The actual pointing of this observation is correct. Star in slot 3 has an offset RMS deviation = 0.218 arcsec in the Y direction. While this is a large value, it is within spec and not expected to degrade the aspect solution.