

# V&V Reference Report

## L2 ASCDS Version : 7.6.7.1

Observation 6318 - L2 Version 002  
Chandra X-Ray Center

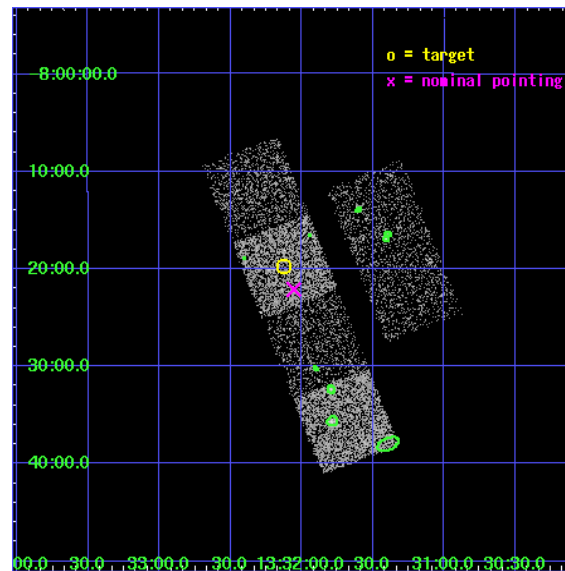
L2 Processing Date : Mar 11 2006

## Contents

<b>1</b>	<b>Front</b>	<b>2</b>
<b>2</b>	<b>OBI</b>	<b>3</b>
2.1	OBI . . . . .	3
2.1.1	Images . . . . .	3
2.1.2	Bias . . . . .	3
2.1.3	Parameters . . . . .	4
2.1.4	Events . . . . .	4
2.2	Compared Parameters . . . . .	5
2.3	Aspect . . . . .	6
2.4	Star Slots . . . . .	9
2.4.1	Slot 3 . . . . .	9
2.4.2	Slot 4 . . . . .	10
2.4.3	Slot 5 . . . . .	11
2.4.4	Slot 6 . . . . .	12
2.4.5	Slot 7 . . . . .	13
2.5	FID Slots . . . . .	14
2.5.1	Slot 0 . . . . .	14
2.5.2	Slot 1 . . . . .	15
2.5.3	Slot 2 . . . . .	16
<b>3</b>	<b>Point Sources</b>	<b>17</b>
<b>A</b>	<b>Summary</b>	<b>18</b>
A.1	Status . . . . .	18
A.2	Comments . . . . .	18

# 1 Front

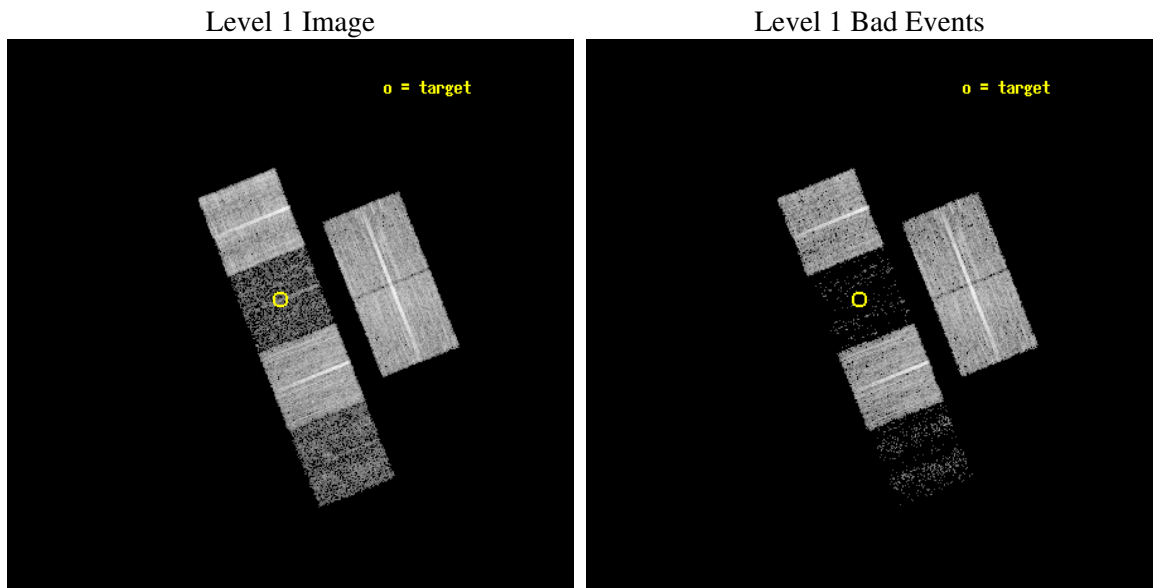
seq_num	100054
obs_id	6318
title	Comet 9P/Tempel 1 During the Deep Impact Encounter
observer	Dr. Carey Lisse
object	9P/Tempel 1
dtcycle	0
cycle	P
ra_targ	203.031484
dec_targ	-8.329461
ra_nom	203.01386611009
dec_nom	-8.3686321651828
roll_nom	248.39371695934
revision	2
ontime	10185.599962056
livetime	10056.623762304
ontime2	10185.599962056
ontime3	10185.599962056
ontime5	10185.599962056
ontime6	10185.599962056
ontime7	10185.599962056
ontime8	10185.599962056
l2events	14330



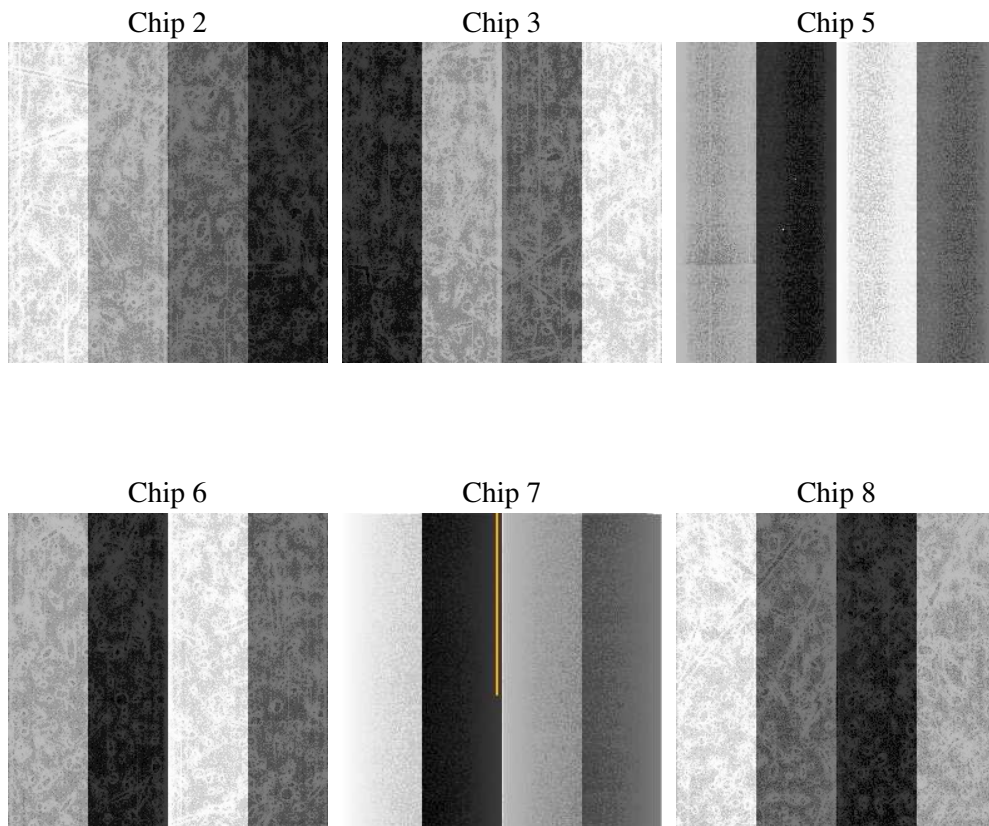
## 2 OBI

### 2.1 OBI

#### 2.1.1 Images



#### 2.1.2 Bias



### 2.1.3 Parameters

obi_num	0
ascdsver	7.6.7.1
caldbver	3.2.1
date	2006-03-12T00:50:23
revision	2

sched_exp_time	10000.000000
ontime	10374.451744109
ontime2	10374.451714218
ontime3	10374.451714218
ontime5	10374.451744109
ontime6	10374.451744109
ontime7	10374.451744109
ontime8	10374.451744109
l1events	206483

### 2.1.4 Events

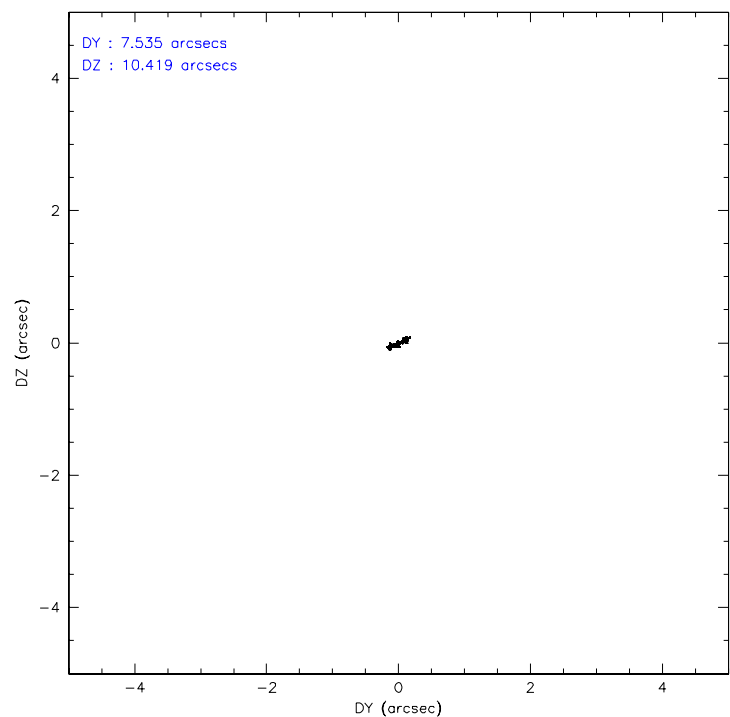
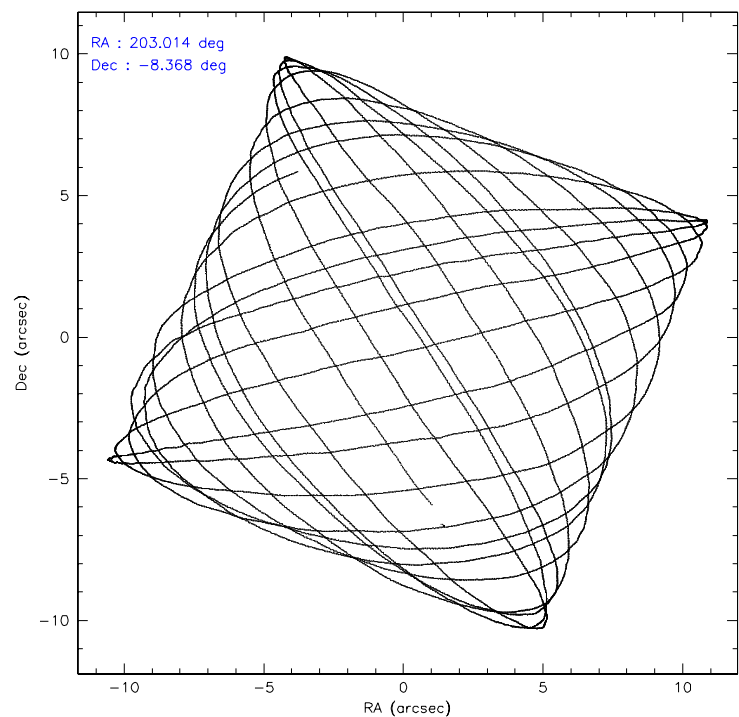
	ccd 2	ccd 3	ccd 5	ccd 6	ccd 7	ccd 8
level 1 events	51596	44211	7944	43905	6198	52629
rejected events	49474	42571	2814	41995	1434	40206
rejected %	95%	96%	35%	95%	23%	76%

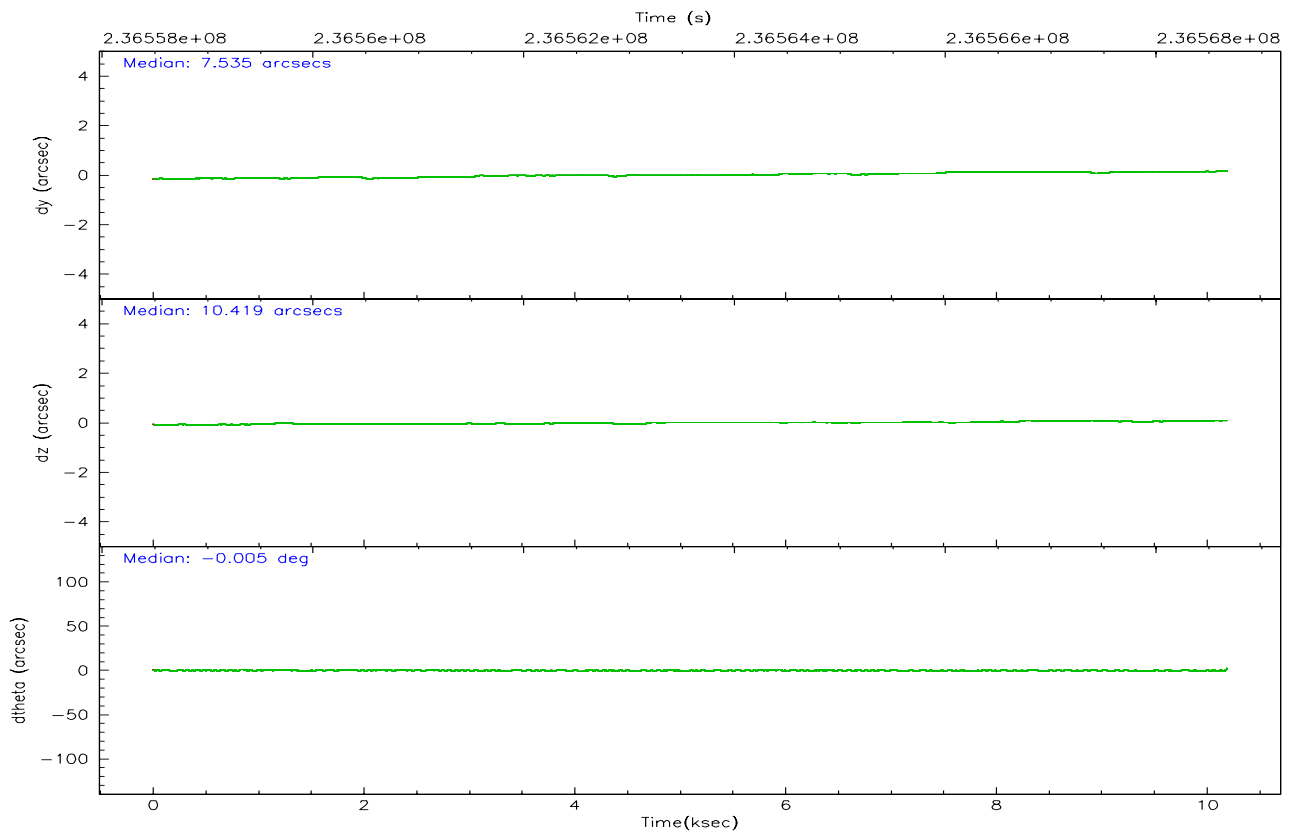
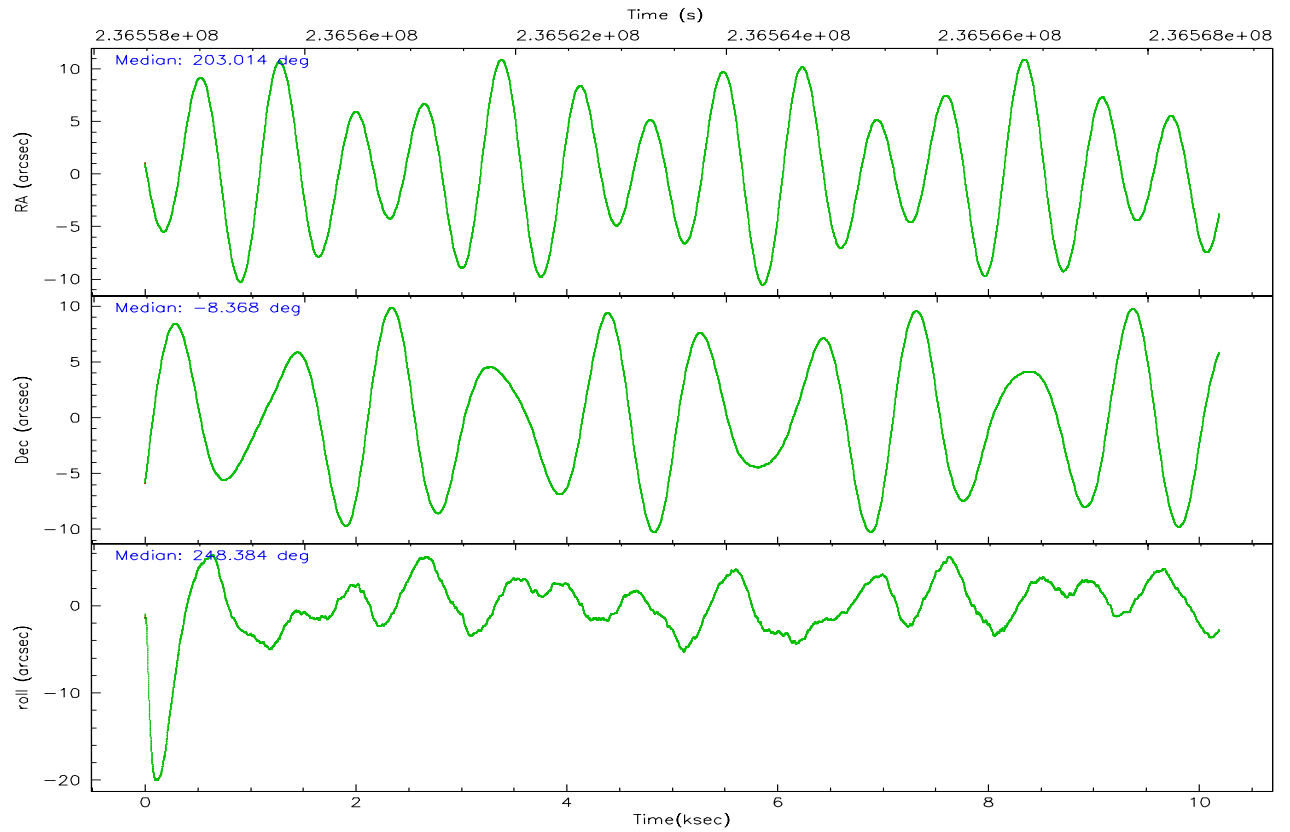
	ccd 2	ccd 3	ccd 5	ccd 6	ccd 7	ccd 8
grade 0 events	914	746	984	941	1197	3288
	1%	1%	12%	2%	19%	6%
grade 1 events	13	17	24	7	11	31
	0%	0%	0%	0%	0%	0%
grade 2 events	516	206	2307	370	1670	3021
	1%	0%	29%	0%	26%	5%
grade 3 events	265	290	645	271	720	1314
	0%	0%	8%	0%	11%	2%
grade 4 events	275	249	603	250	696	1211
	0%	0%	7%	0%	11%	2%
grade 5 events	68	44	421	23	176	275
	0%	0%	5%	0%	2%	0%
grade 6 events	207	177	681	111	557	3831
	0%	0%	8%	0%	8%	7%
grade 7 events	49338	42482	2279	41932	1171	39658
	95%	96%	28%	95%	18%	75%

## 2.2 Compared Parameters

Parameter	Planned	Actual	Parameter	Planned	Actual
Instrument	ACIS	ACIS	Obspar format version number	6	6
Detector	ACIS-235678	ACIS-235678	Obspar file type	PREDICTED	ACTUAL
Grating	NONE	NONE	Obspar update status	NONE	UPDATED
Data mode	VFAINT	VFAINT	On-chip summing requested	N	N
Observation mode	POINTING	POINTING	Subarray requested	NONE	NONE
Pointing RA	203.009503	203.0138661100928	Alternating exposures requested	N	N
Pointing Dec	-8.341779	-8.368632165182806	Primary exposure time	0.000000	3.2
Pointing Roll	248.236428	248.3937169593381			
SIM focus pos (mm)	-0.684267	-0.6828225247311905			
SIM defocus (mm)	0	0.001444936568705701			
SIM translation stage pos (mm)	-190.132523	-190.1400660498719			
SIM translation stage offset (mm)	0	0.00754346686406393			
Observation start time	236558670.184000	236558294.53424			
Observation start date	2005-06-30T22:43:26	2005-06-30T22:38:14			
Observation end time	236568670.184000	236569186.18473			
Observation end date	2005-07-01T01:30:06	2005-07-01T01:39:46			
Read mode	TIMED	TIMED			

## 2.3 Aspect





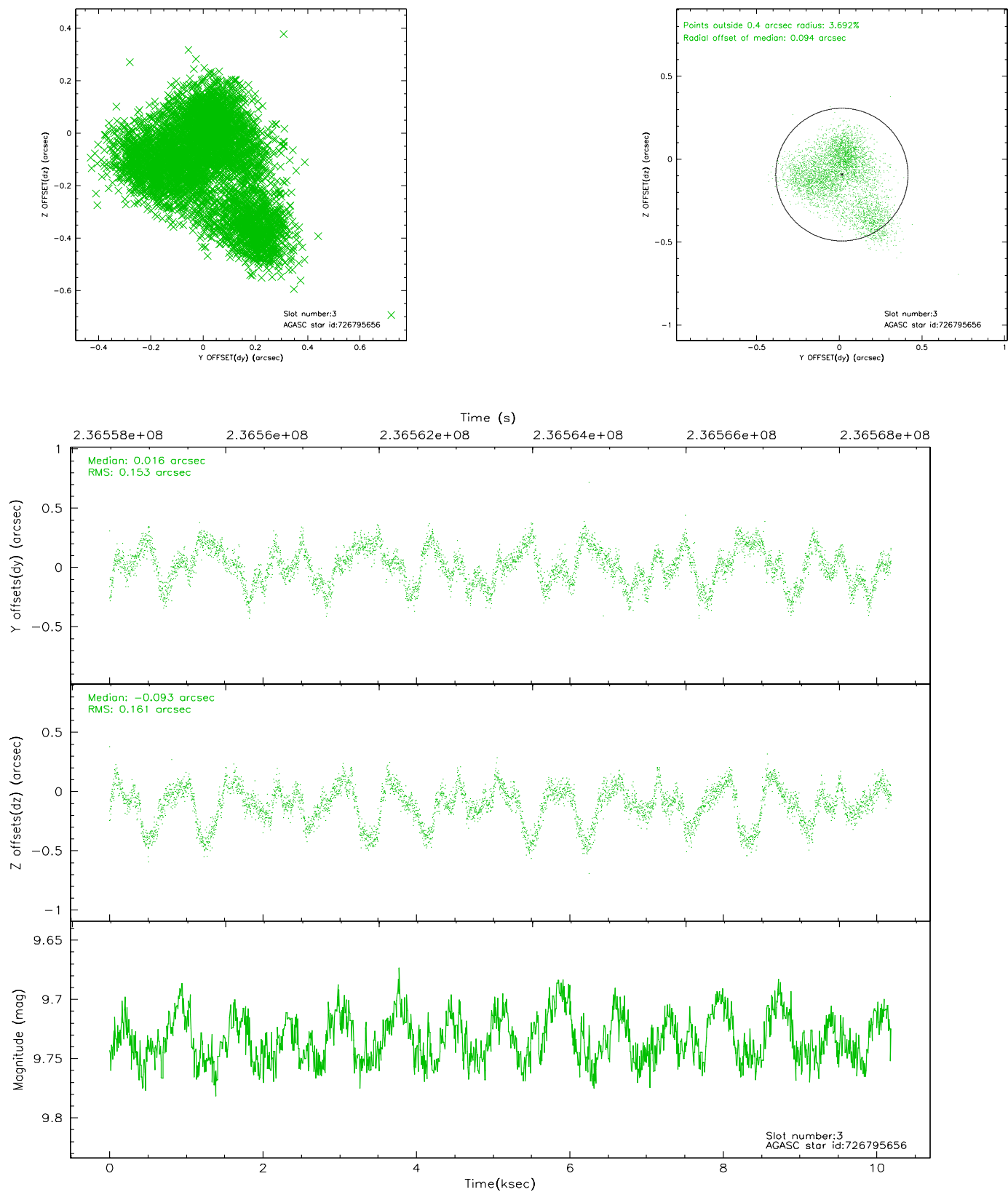
### Slot Statistics

slot	status	id	mag	n_pts	med_dy	med_dz	dr1	dr2	ra	dec	mean_y	mean_z
0	FID	ACIS-S-2	7.10	2487	-0.034	0.012	0.006	0.010	0.000000	0.000000	-760.30	-1731.68
1	FID	ACIS-S-4	7.20	2486	0.052	0.014	0.006	0.010	0.000000	0.000000	2152.78	176.34
2	FID	ACIS-S-5	7.23	2487	-0.049	-0.016	0.008	0.013	0.000000	0.000000	-1812.54	170.47
3	GUIDE	726795656	9.73	4902	0.016	-0.093	0.236	0.387	202.576235	-8.591995	1409.88	-1097.75
4	GUIDE	726796976	9.95	4966	-0.117	0.156	0.107	0.176	203.076886	-8.047529	-1072.17	-169.73
5	GUIDE	726797168	9.23	4966	0.110	0.146	0.097	0.159	202.692279	-8.774007	1864.46	-470.49
6	GUIDE	726797936	8.88	4972	0.100	-0.163	0.103	0.159	202.337774	-8.785484	2372.73	-1626.32
7	GUIDE	726799728	8.98	4970	-0.099	-0.029	0.094	0.149	203.680019	-8.342027	-881.35	2217.57

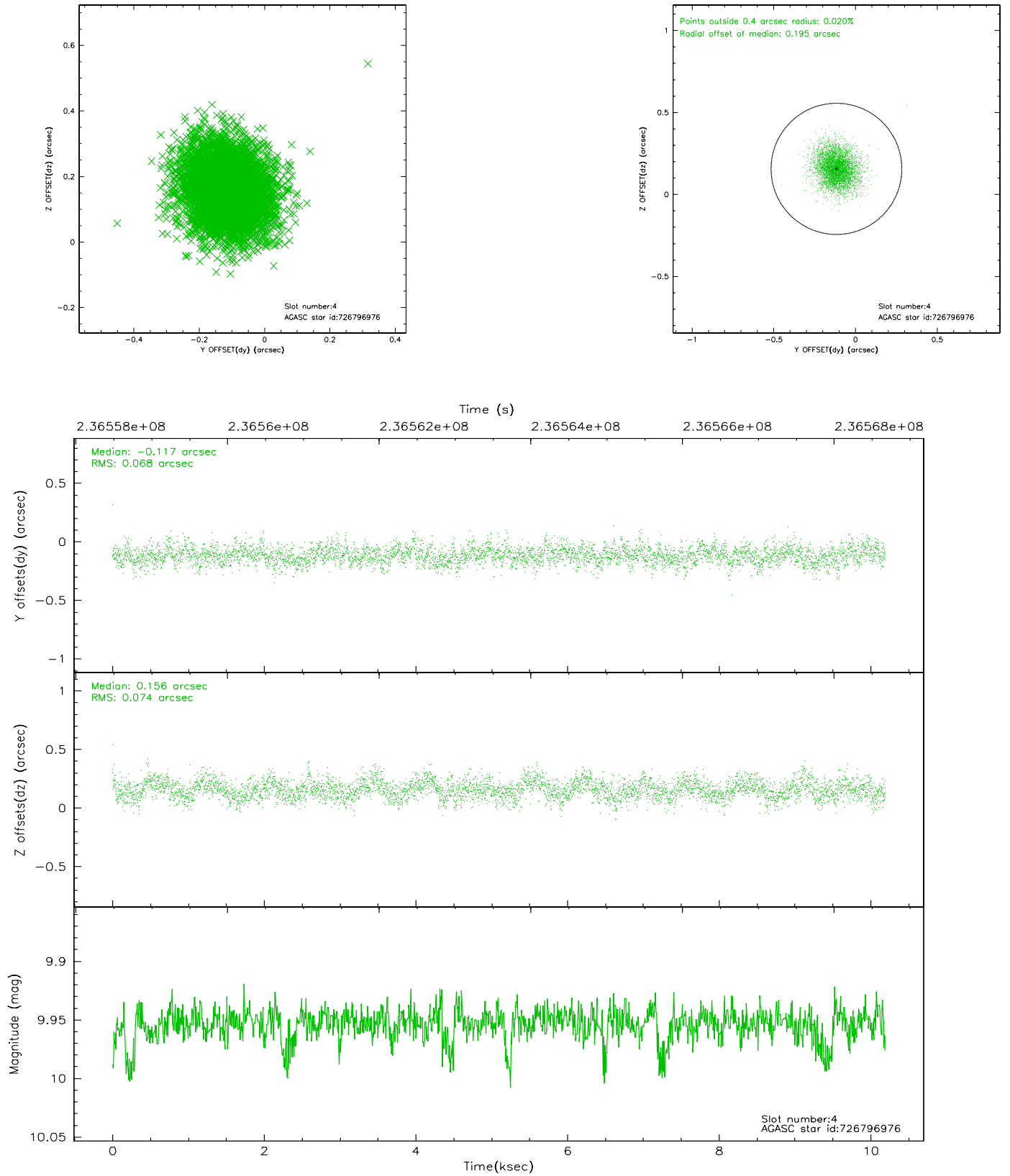


## 2.4 Star Slots

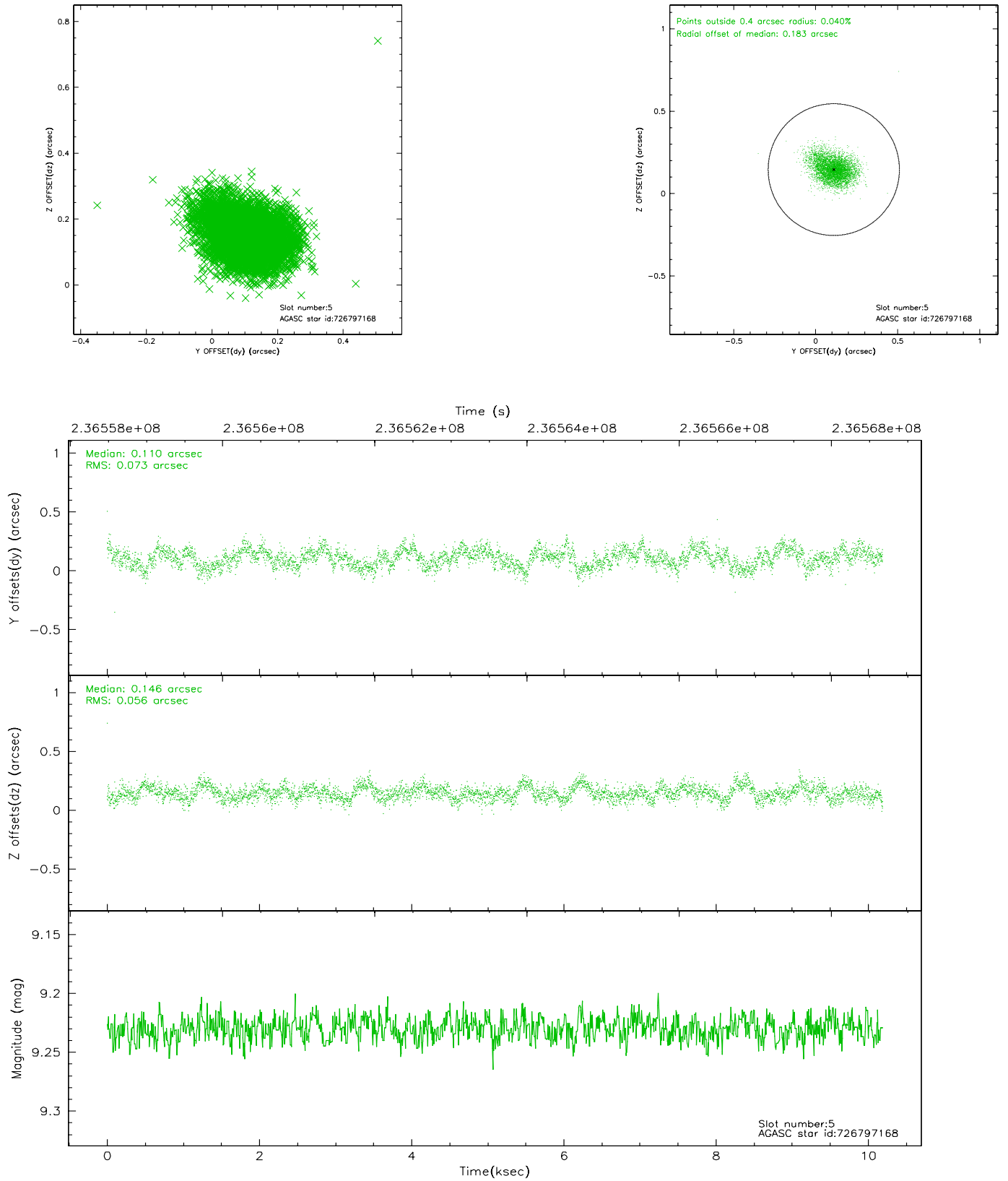
### 2.4.1 Slot 3



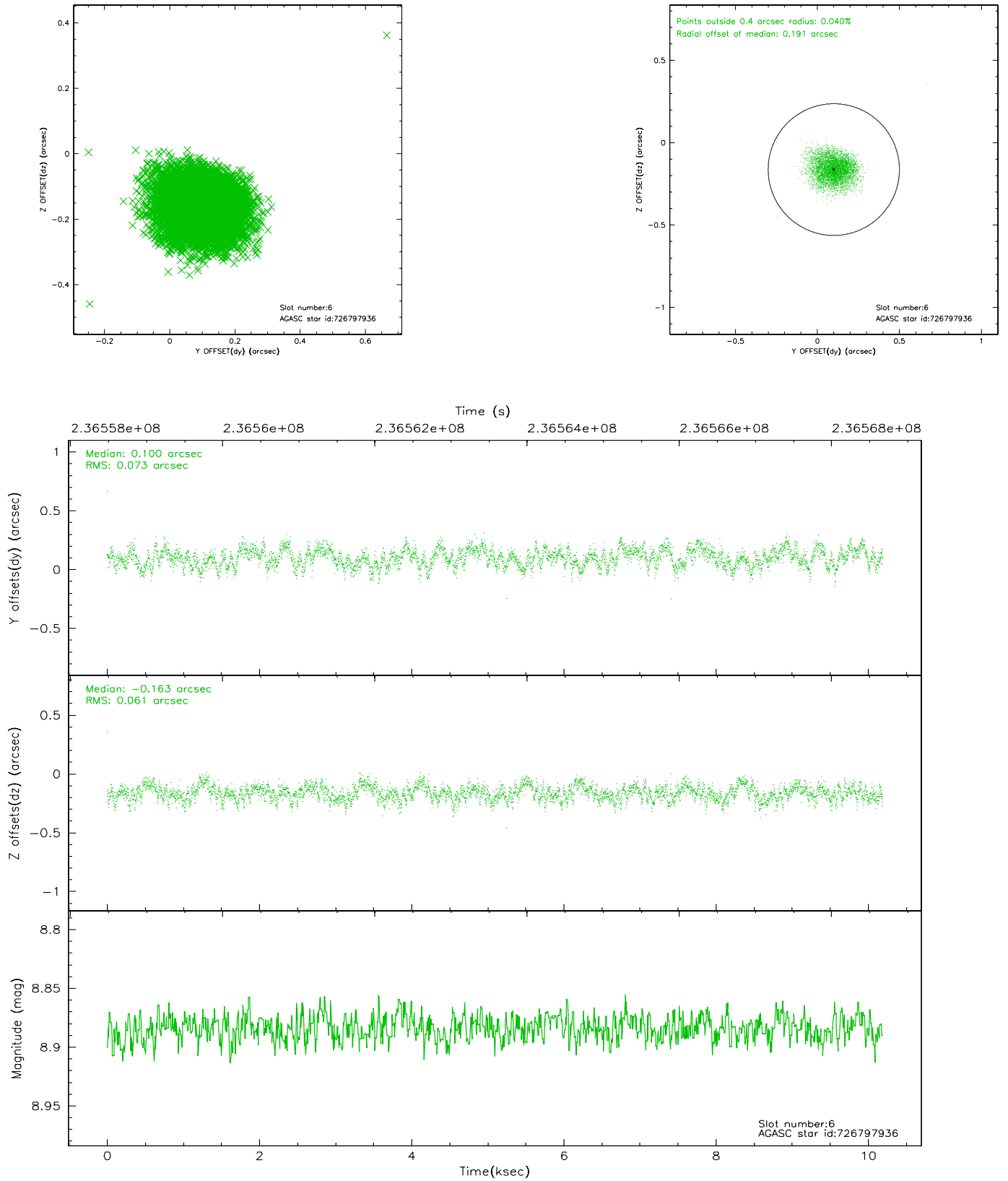
## 2.4.2 Slot 4



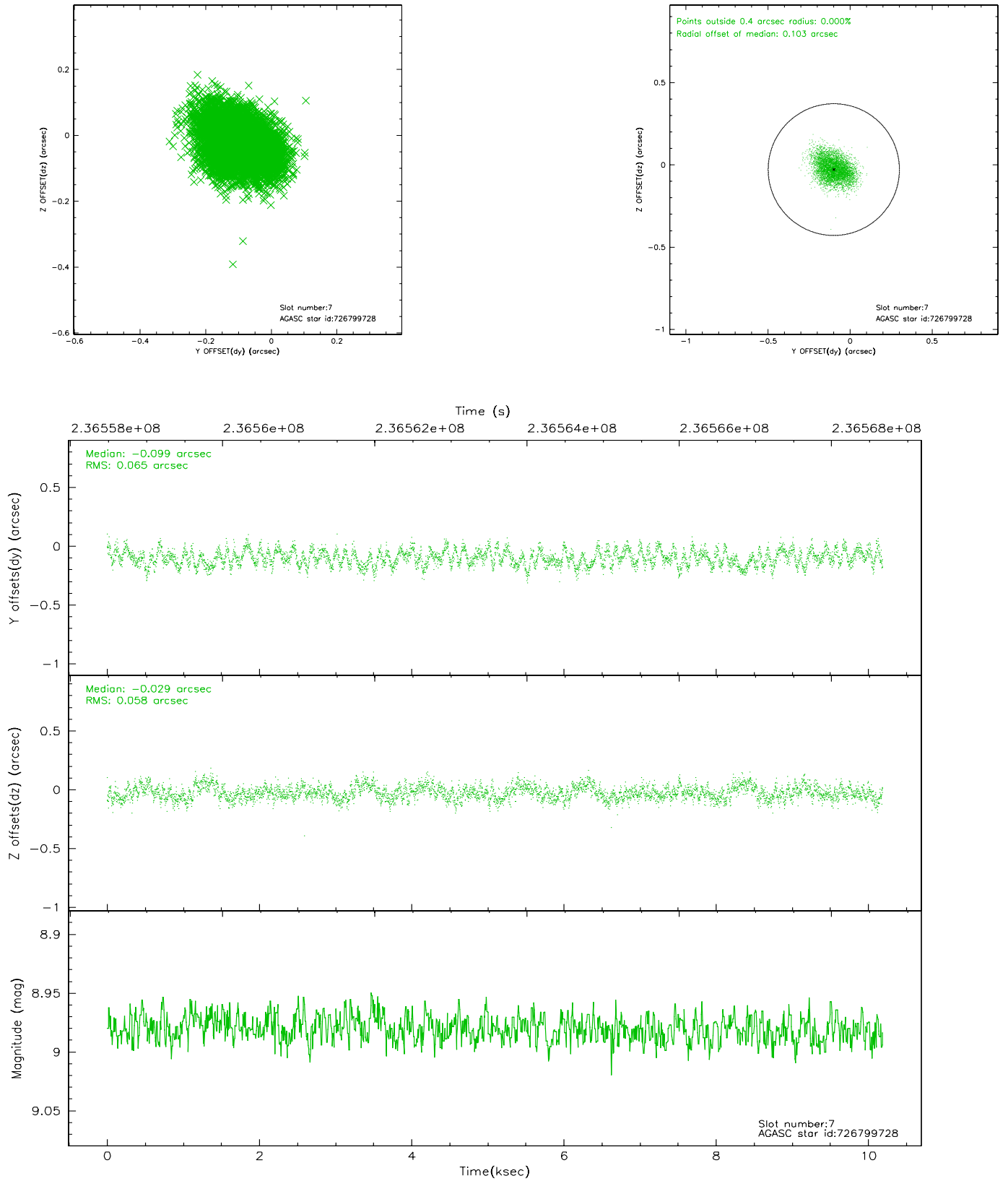
### 2.4.3 Slot 5



## 2.4.4 Slot 6

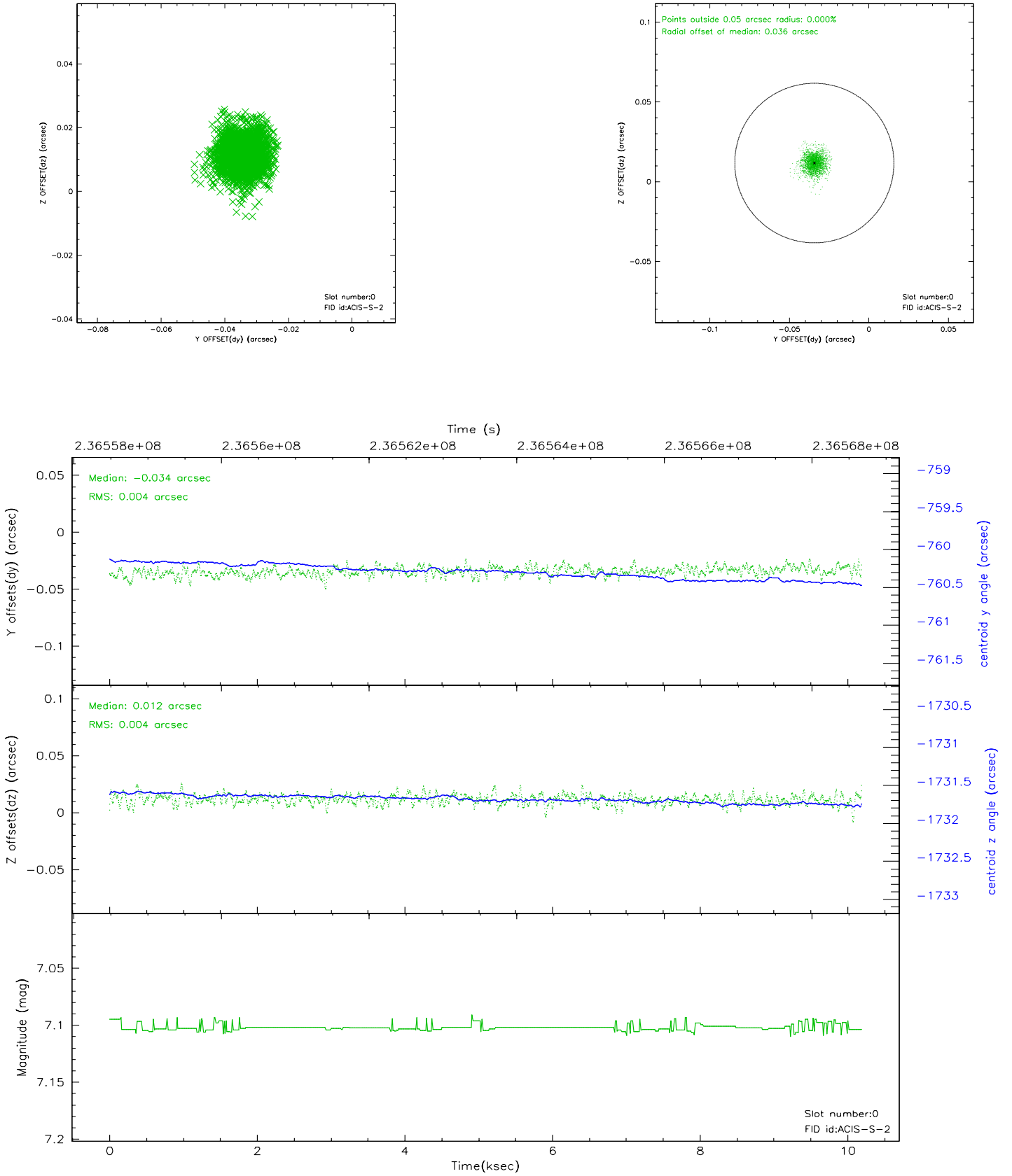


## 2.4.5 Slot 7

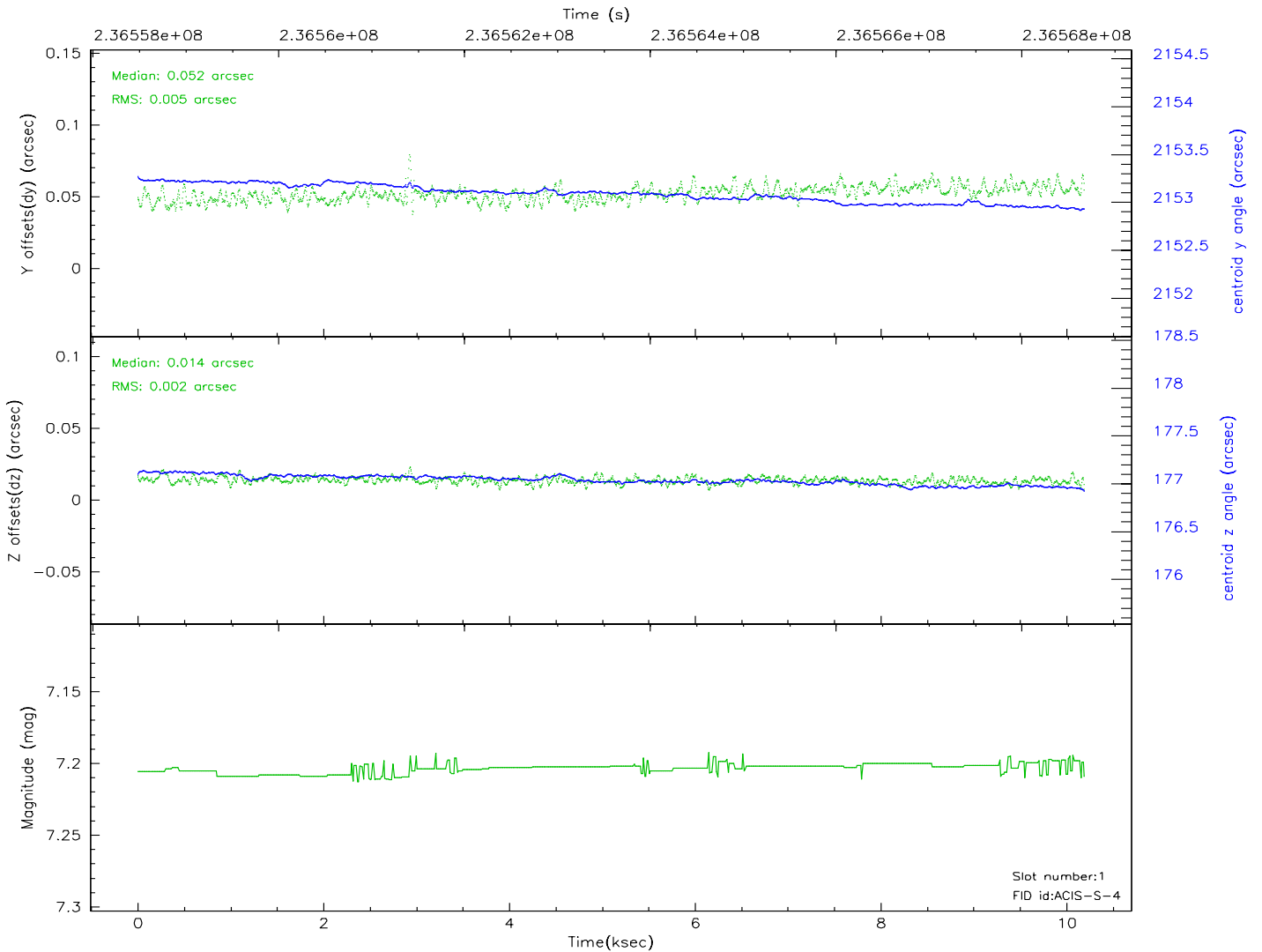
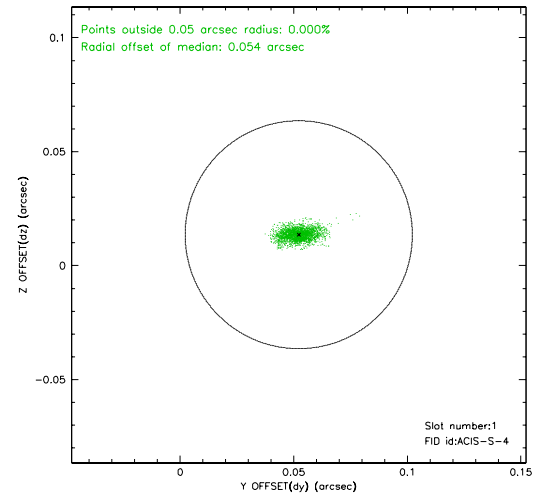
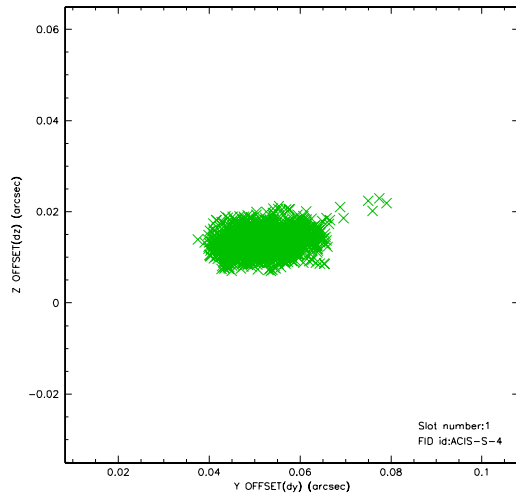


## 2.5 FID Slots

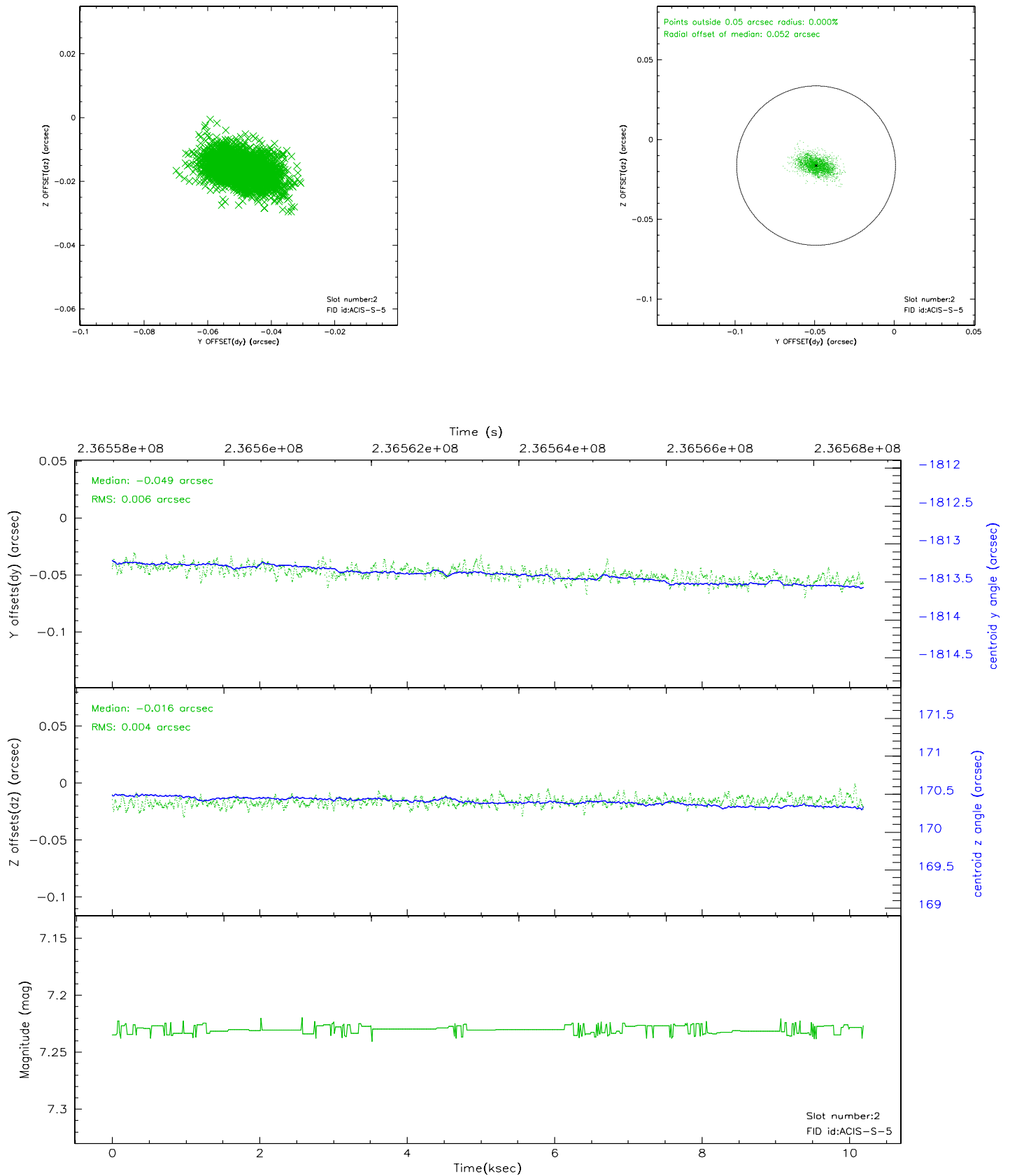
### 2.5.1 Slot 0



## 2.5.2 Slot 1

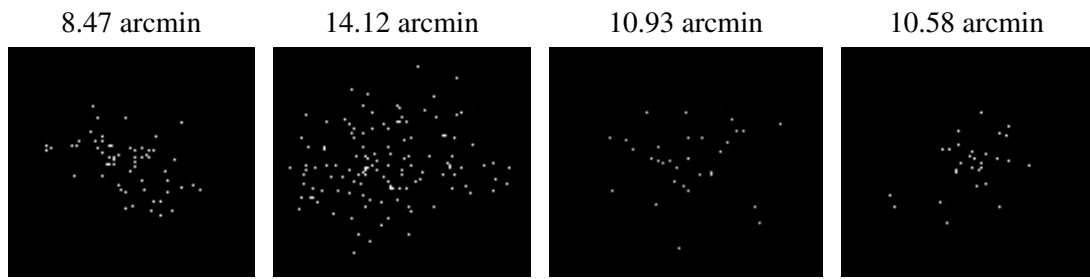


### 2.5.3 Slot 2





### 3 Point Sources



## A Summary

### A.1 Status

V&V Scientist	Beth Sundheim
V&V Date (YYYY-MM-DD)	2006.03.13
V&V Edition	1
V&V Disposition and Status	OK
V&V Charge Time	10.18559

### A.2 Comments