

# V&V Reference Report

## L2 ASCDS Version : 7.6.7.1

Observation 6281 - L2 Version 002  
Chandra X-Ray Center

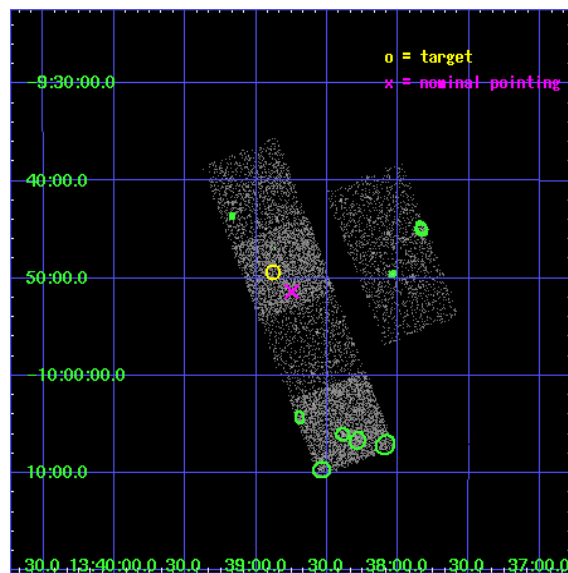
L2 Processing Date : Mar 12 2006

## Contents

<b>1</b>	<b>Front</b>	<b>2</b>
<b>2</b>	<b>OBI</b>	<b>3</b>
2.1	OBI . . . . .	3
2.1.1	Images . . . . .	3
2.1.2	Bias . . . . .	3
2.1.3	Parameters . . . . .	4
2.1.4	Events . . . . .	4
2.2	Compared Parameters . . . . .	5
2.3	Aspect . . . . .	6
2.4	Star Slots . . . . .	9
2.4.1	Slot 3 . . . . .	9
2.4.2	Slot 4 . . . . .	10
2.4.3	Slot 5 . . . . .	11
2.4.4	Slot 6 . . . . .	12
2.4.5	Slot 7 . . . . .	13
2.5	FID Slots . . . . .	14
2.5.1	Slot 0 . . . . .	14
2.5.2	Slot 1 . . . . .	15
2.5.3	Slot 2 . . . . .	16
<b>3</b>	<b>Point Sources</b>	<b>17</b>
<b>A</b>	<b>Summary</b>	<b>18</b>
A.1	Status . . . . .	18
A.2	Comments . . . . .	18

# 1 Front

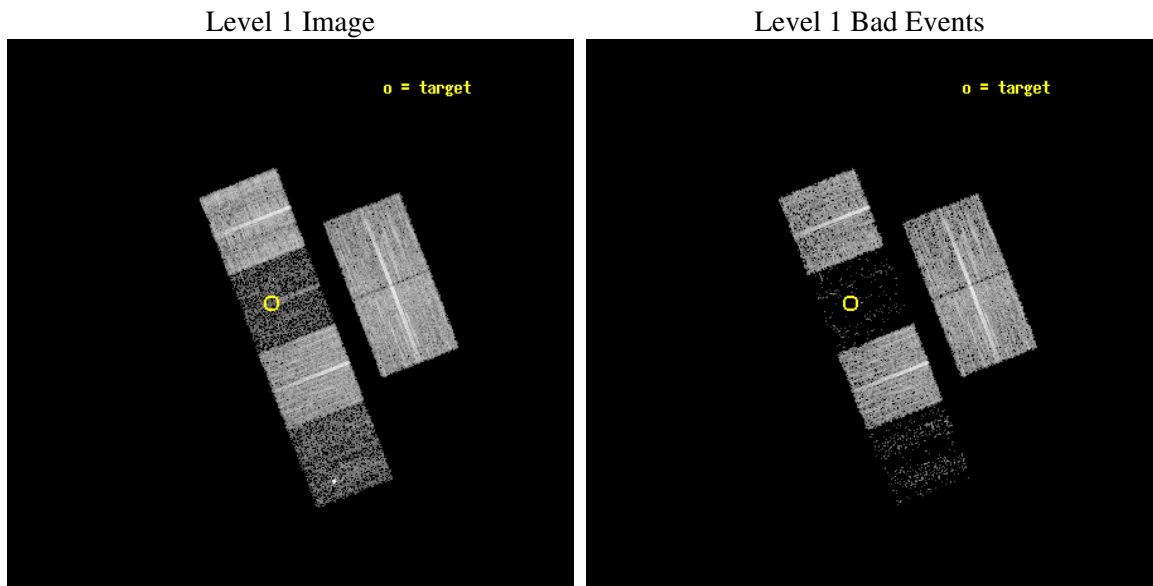
seq_num	100060
obs_id	6281
title	Comet 9P/Tempel 1 During the Deep Impact Encounter
observer	Dr. Carey Lisse
object	9P/Tempel 1
dtcycle	0
cycle	P
ra_targ	204.720229
dec_targ	-9.82286
ra_nom	204.68716385317
dec_nom	-9.8561913255598
roll_nom	248.89030549243
revision	2
ontime	8211.1999694109
livetime	8107.2248112072
ontime2	8207.9590091109
ontime3	8211.1999694109
ontime5	8211.1999694109
ontime6	8211.1999694109
ontime7	8211.1999694109
ontime8	8211.1999694109
l2events	12160



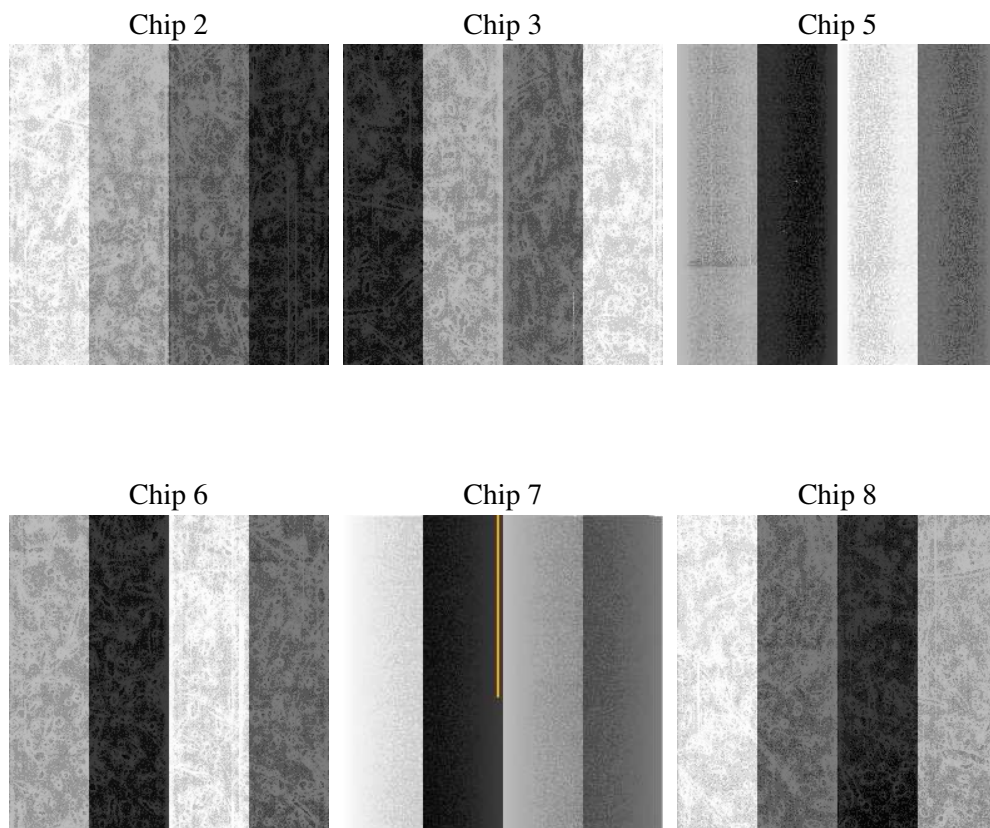
## 2 OBI

### 2.1 OBI

#### 2.1.1 Images



#### 2.1.2 Bias



### 2.1.3 Parameters

obi_num	0
ascdsver	7.6.7.1
caldbver	3.2.1
date	2006-03-12T04:00:34
revision	2

sched_exp_time	8029.000000
ontime	8403.9196142256
ontime2	8400.6786539257
ontime3	8403.9196142256
ontime5	8403.9196142256
ontime6	8403.9195843339
ontime7	8403.9196142256
ontime8	8403.9196142256
l1events	167269

### 2.1.4 Events

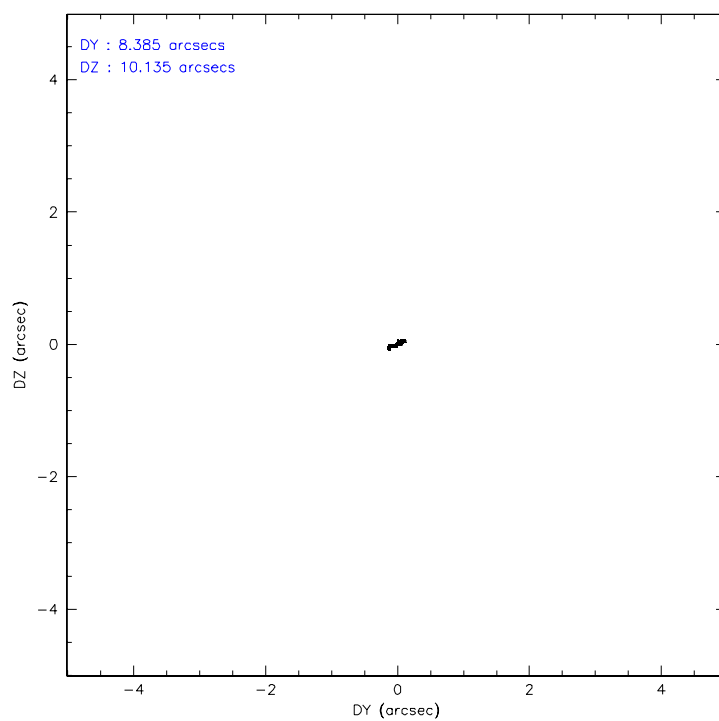
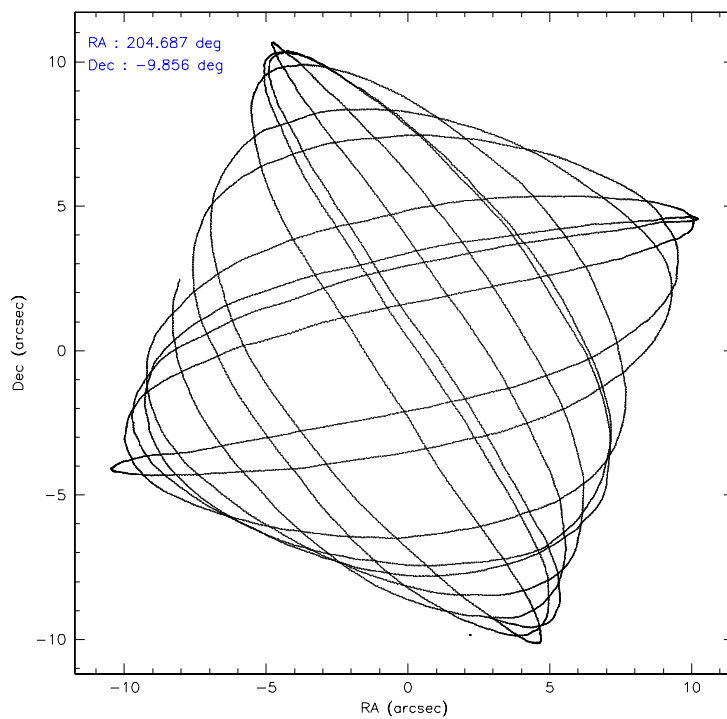
	ccd 2	ccd 3	ccd 5	ccd 6	ccd 7	ccd 8
level 1 events	42164	34724	7205	35329	5306	42541
rejected events	40398	33383	2359	33776	1249	31859
rejected %	95%	96%	32%	95%	23%	74%

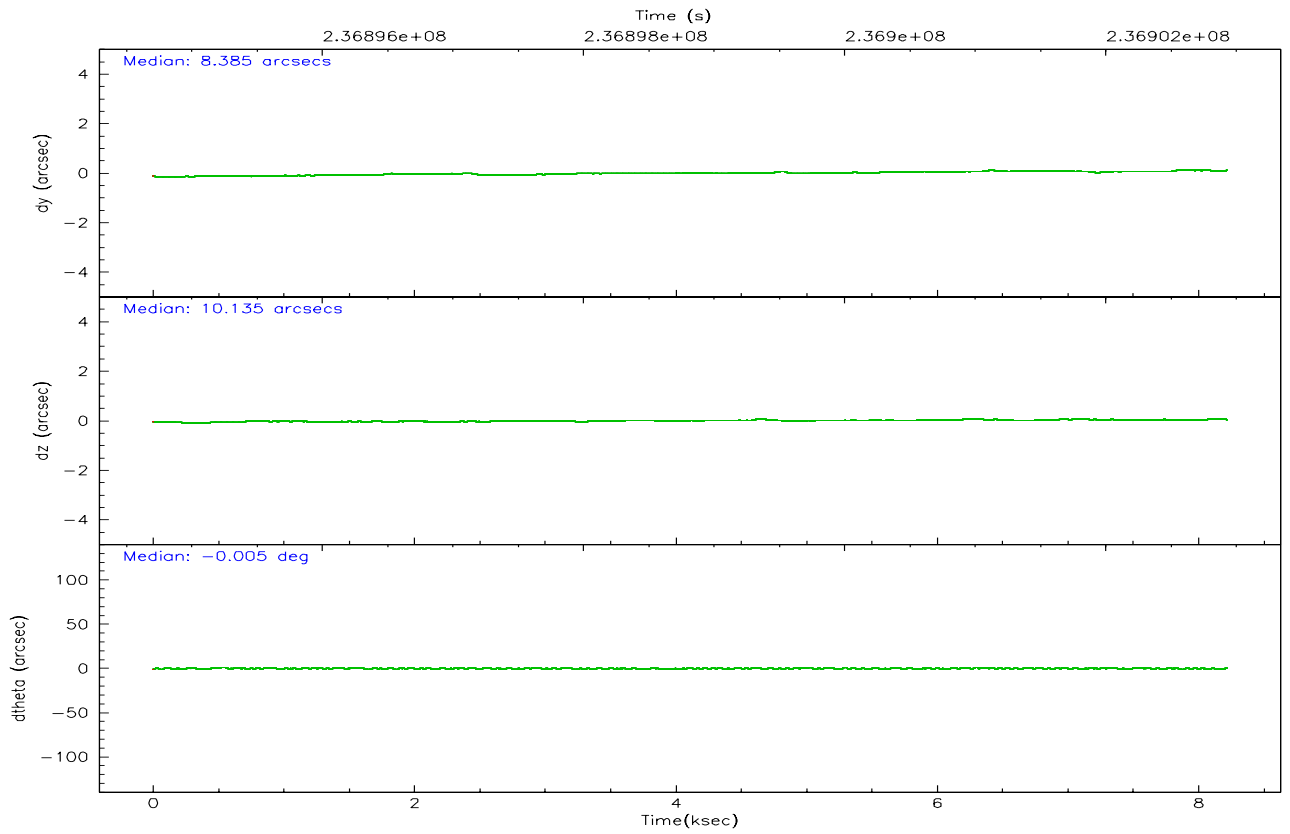
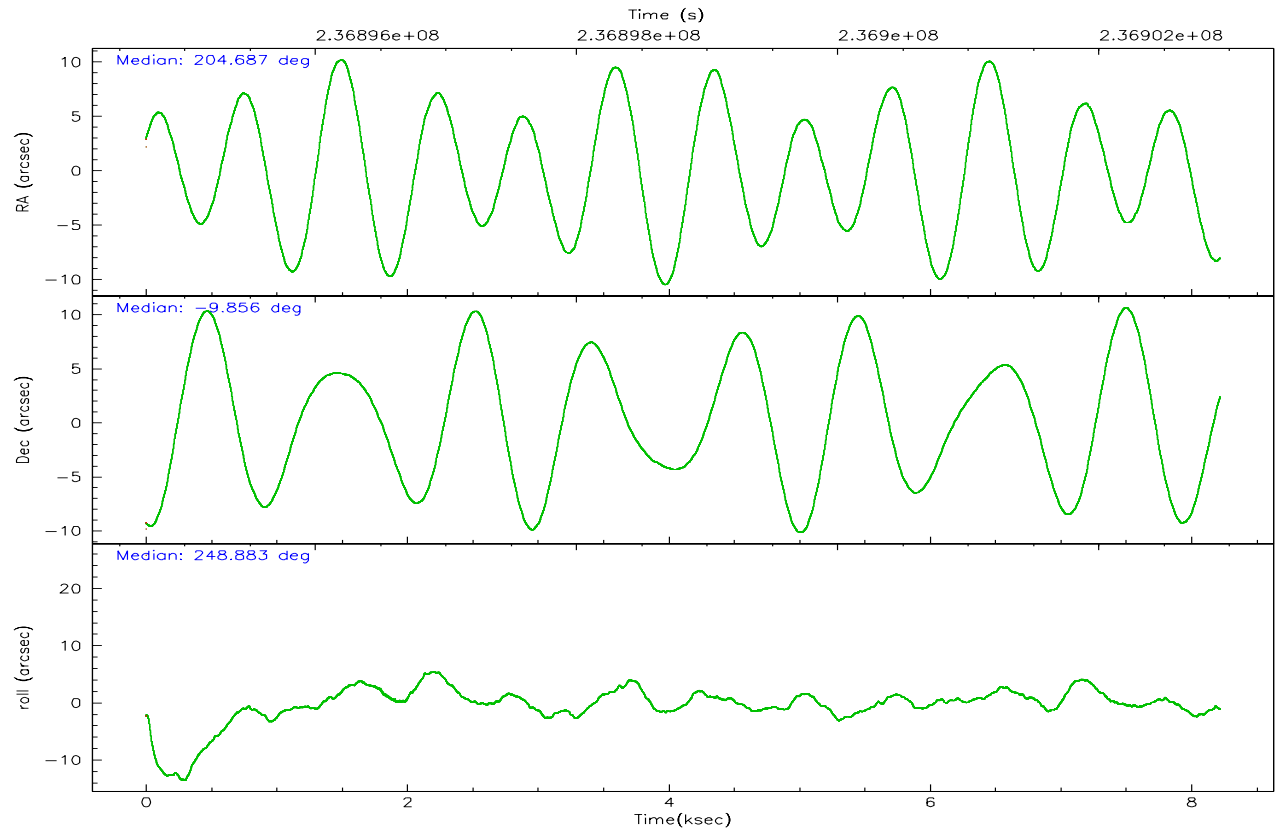
	ccd 2	ccd 3	ccd 5	ccd 6	ccd 7	ccd 8
grade 0 events	752	679	1434	725	988	2912
	1%	1%	19%	2%	18%	6%
grade 1 events	18	3	19	17	19	23
	0%	0%	0%	0%	0%	0%
grade 2 events	394	176	1937	292	1420	2542
	0%	0%	26%	0%	26%	5%
grade 3 events	224	218	521	228	609	1195
	0%	0%	7%	0%	11%	2%
grade 4 events	249	188	488	206	588	1097
	0%	0%	6%	0%	11%	2%
grade 5 events	49	20	322	32	138	235
	0%	0%	4%	0%	2%	0%
grade 6 events	193	101	563	123	539	3097
	0%	0%	7%	0%	10%	7%
grade 7 events	40285	33339	1921	33706	1005	31440
	95%	96%	26%	95%	18%	73%

## 2.2 Compared Parameters

Parameter	Planned	Actual	Parameter	Planned	Actual
Instrument	ACIS	ACIS	Obspar format version number	6	6
Detector	ACIS-235678	ACIS-235678	Obspar file type	PREDICTED	ACTUAL
Grating	NONE	NONE	Obspar update status	NONE	UPDATED
Data mode	VFAINT	VFAINT	On-chip summing requested	N	N
Observation mode	POINTING	POINTING	Subarray requested	NONE	NONE
Pointing RA	204.682505	204.6871638531747	Alternating exposures requested	N	N
Pointing Dec	-9.829316	-9.85619132555982	Primary exposure time	0.000000	3.2
Pointing Roll	248.732865	248.8903054924335			
SIM focus pos (mm)	-0.684267	-0.6828225247311905			
SIM defocus (mm)	0	0.001444936568705701			
SIM translation stage pos (mm)	-190.132523	-190.145094680475			
SIM translation stage offset (mm)	0	0.01257209746719923			
Observation start time	236894893.184000	236894517.09961			
Observation start date	2005-07-04T20:07:09	2005-07-04T20:01:57			
Observation end time	236902922.184000	236903147.08751			
Observation end date	2005-07-04T22:20:58	2005-07-04T22:25:47			
Read mode	TIMED	TIMED			

## 2.3 Aspect





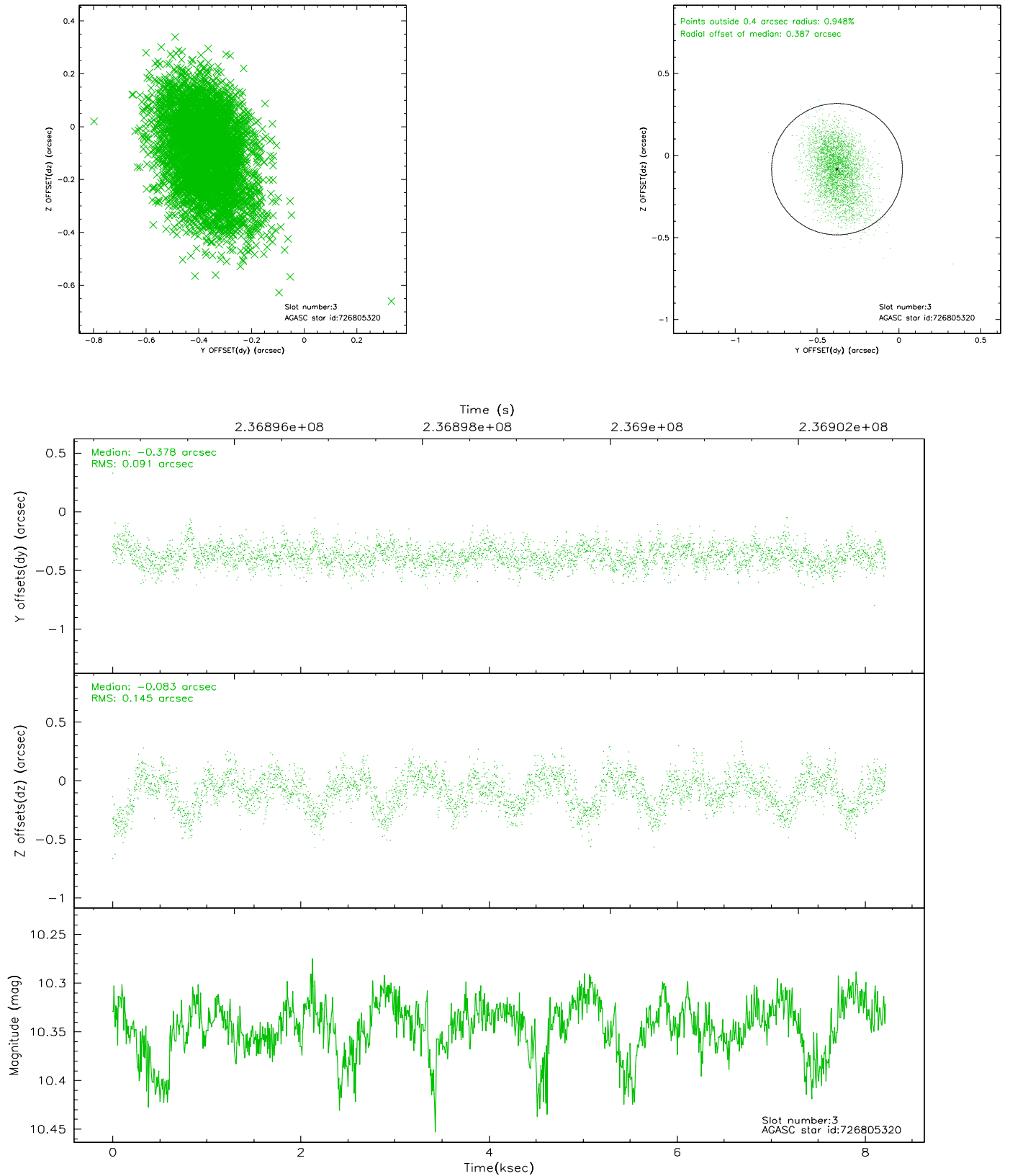
### Slot Statistics

slot	status	id	mag	n_pts	med_dy	med_dz	dr1	dr2	ra	dec	mean_y	mean_z
0	FID	ACIS-S-2	7.11	2006	-0.032	-0.008	0.007	0.011	0.000000	0.000000	-761.16	-1731.31
1	FID	ACIS-S-4	7.20	2006	0.095	0.018	0.006	0.013	0.000000	0.000000	2151.89	176.57
2	FID	ACIS-S-5	7.23	2006	-0.094	-0.001	0.007	0.012	0.000000	0.000000	-1813.23	170.89
3	GUIDE	726805320	10.34	4007	-0.378	-0.083	0.179	0.306	204.212849	-9.734967	289.08	-1675.86
4	GUIDE	726932888	9.56	4007	-0.559	0.093	0.104	0.169	204.640397	-9.165404	-2173.05	-1007.06
5	GUIDE	726935840	9.51	4006	0.764	-0.562	0.106	0.175	205.084608	-9.297514	-2301.12	636.15
6	GUIDE	727320712	10.44	3998	0.130	0.255	0.158	0.246	204.468965	-10.254166	1699.87	-149.47
7	GUIDE	727321032	9.99	4008	0.040	0.307	0.142	0.226	205.073686	-10.196206	729.50	1771.31

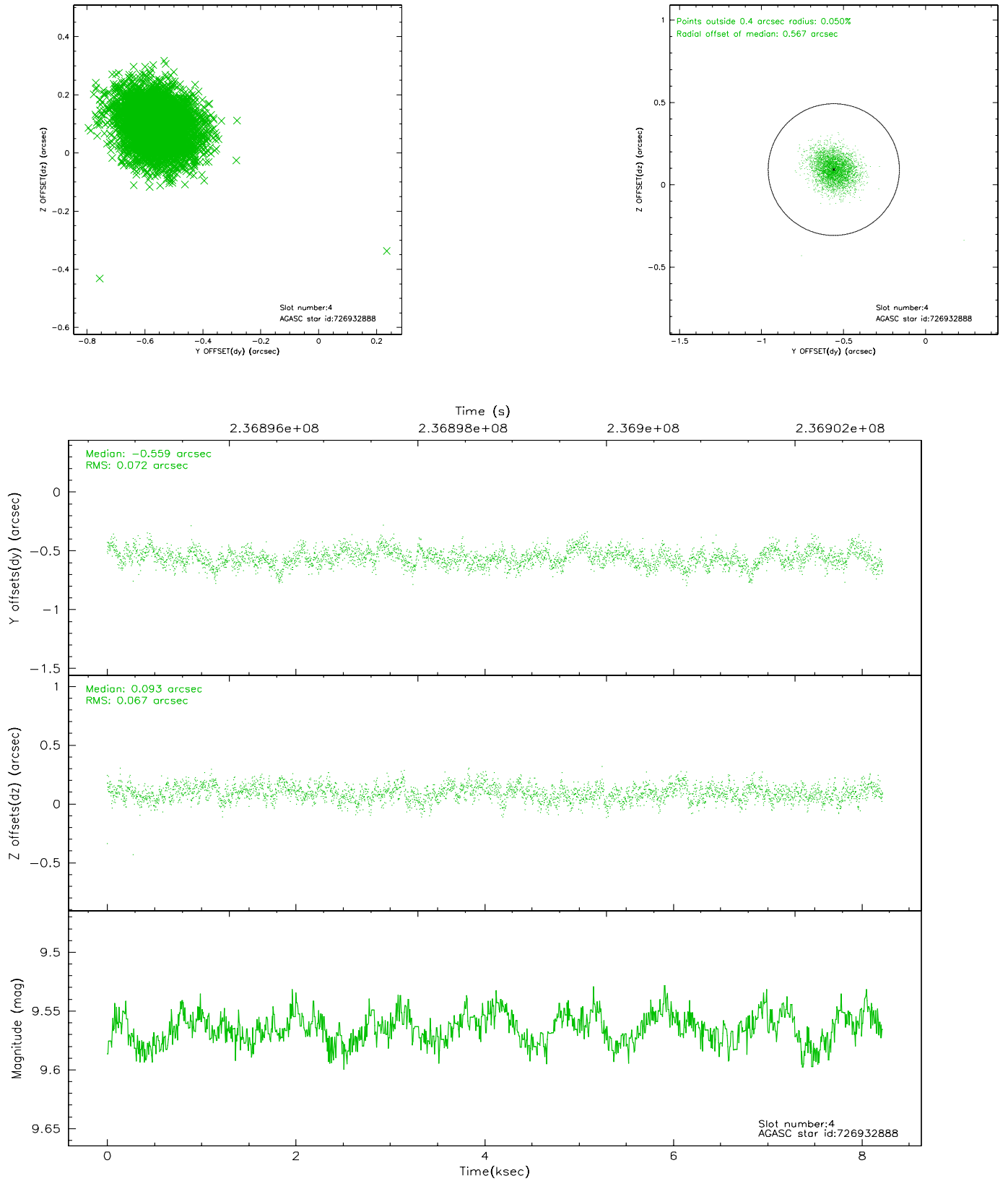


## 2.4 Star Slots

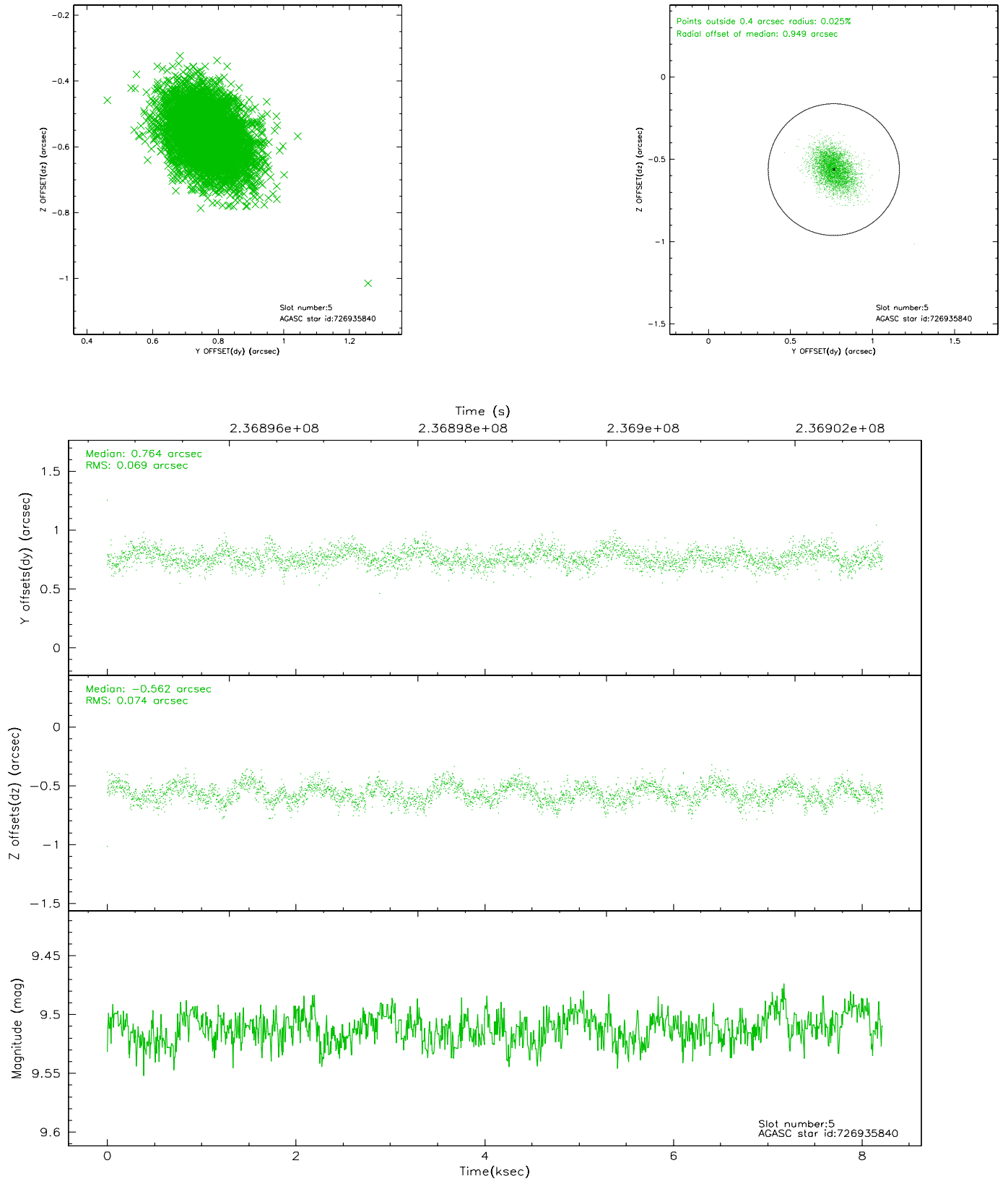
### 2.4.1 Slot 3



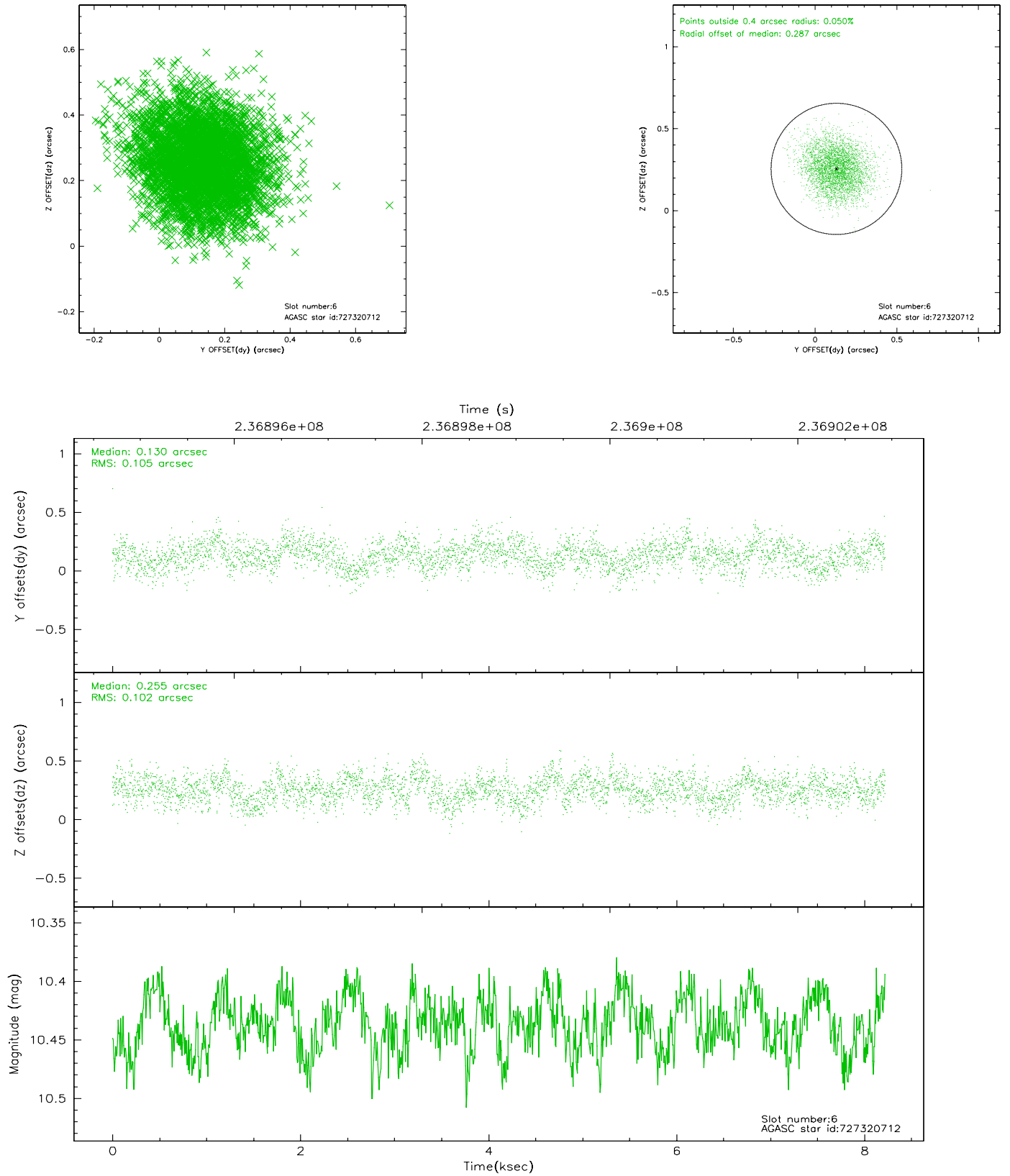
## 2.4.2 Slot 4



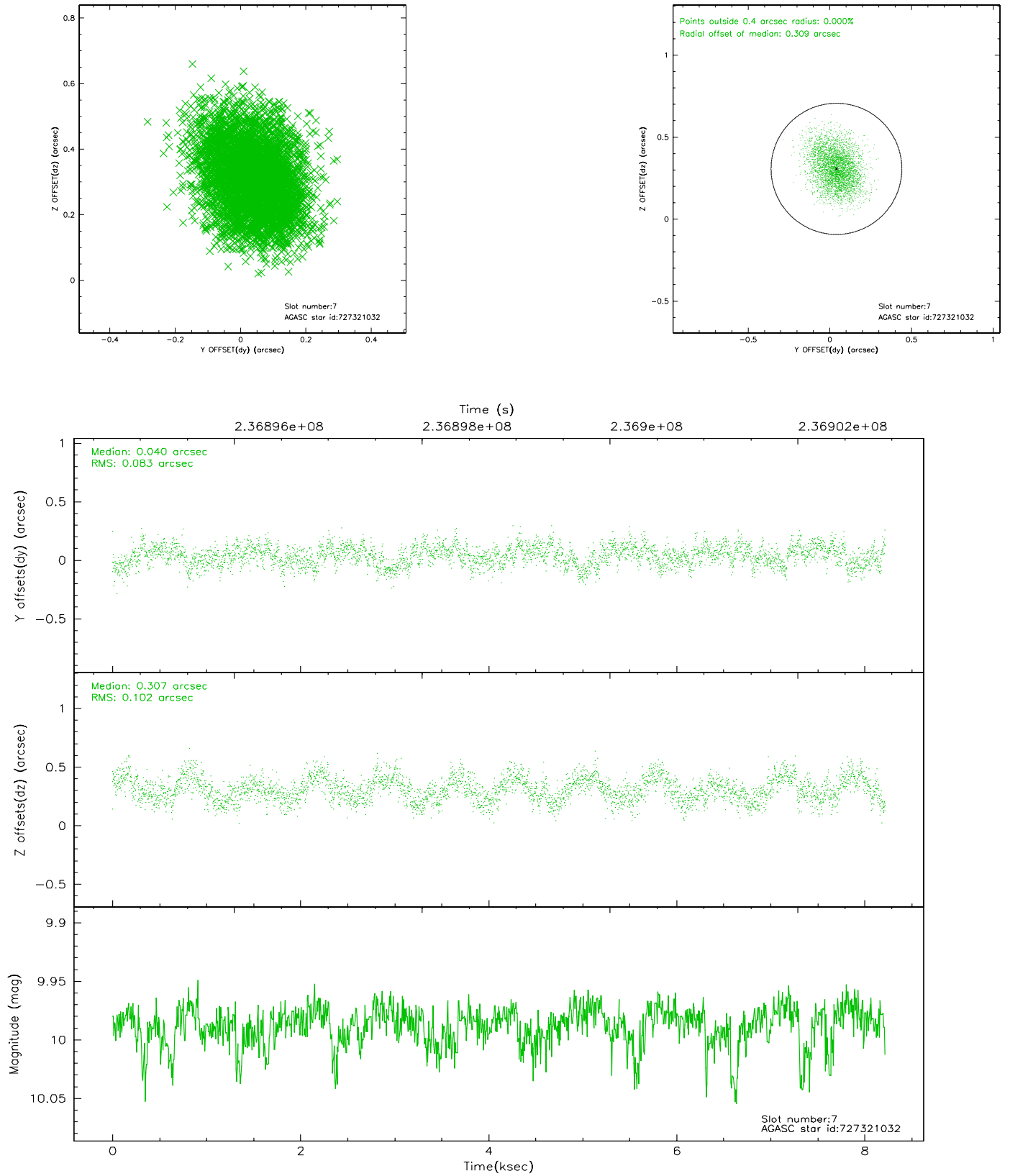
### 2.4.3 Slot 5



## 2.4.4 Slot 6

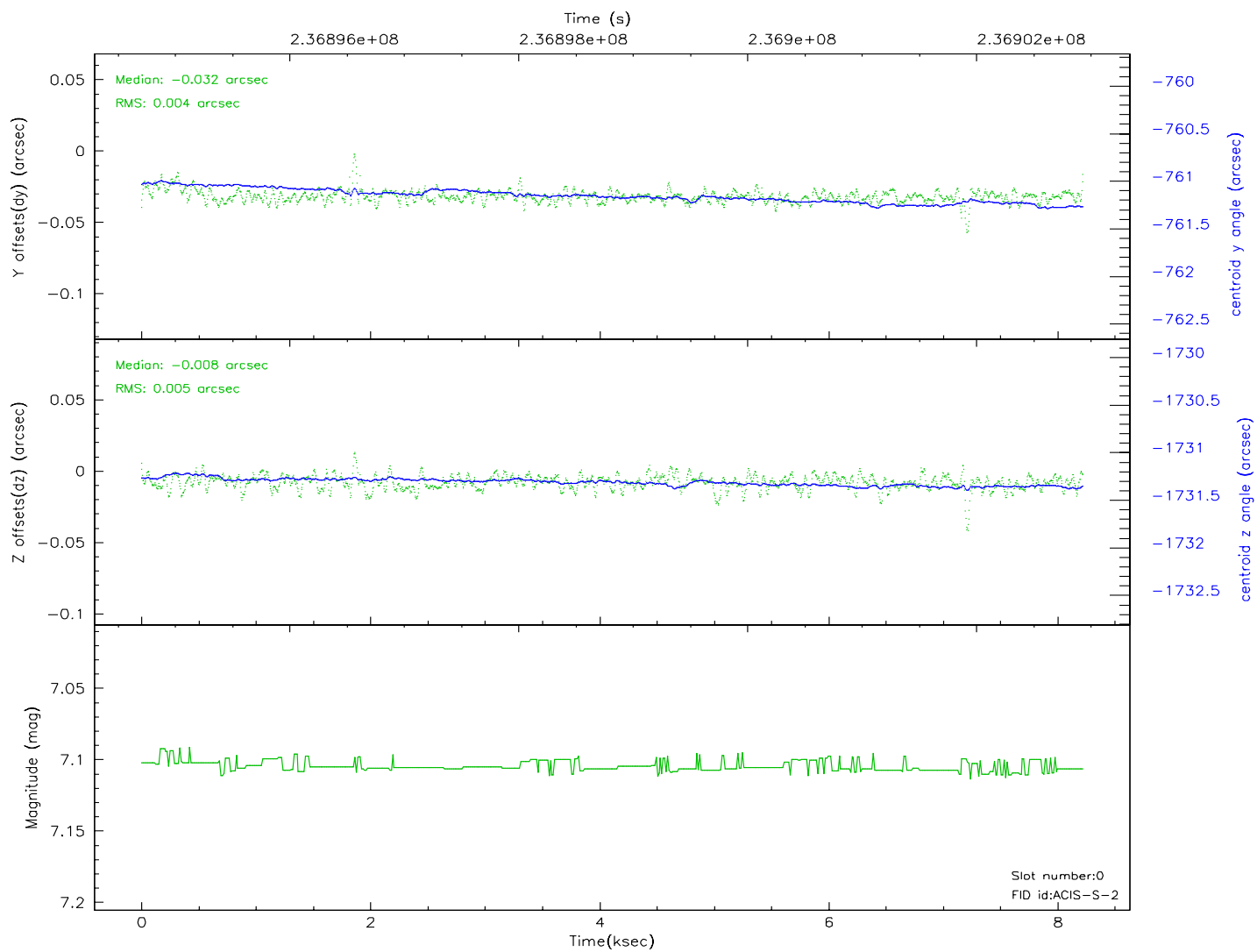
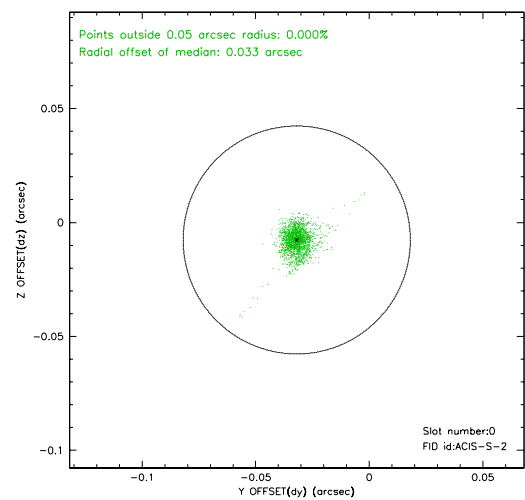
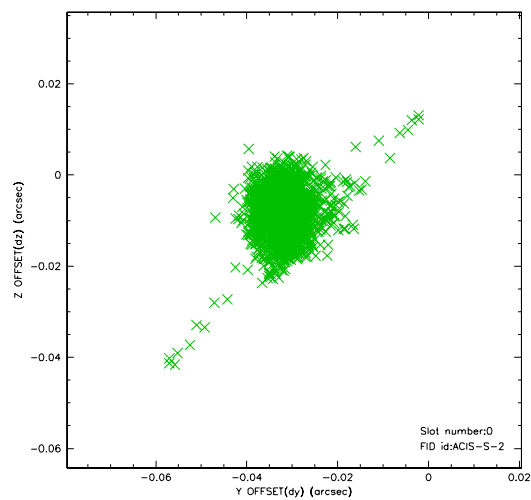


## 2.4.5 Slot 7

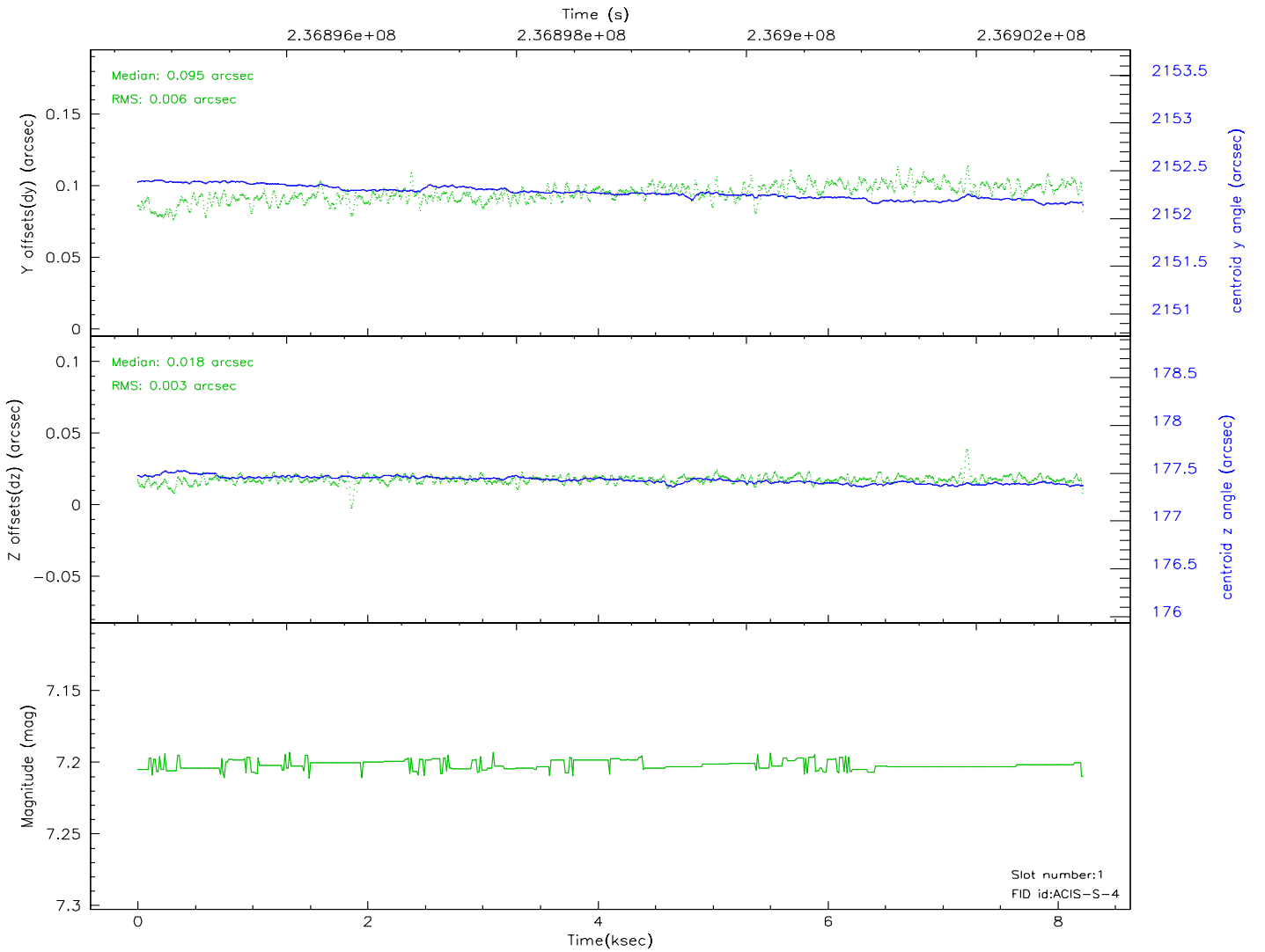
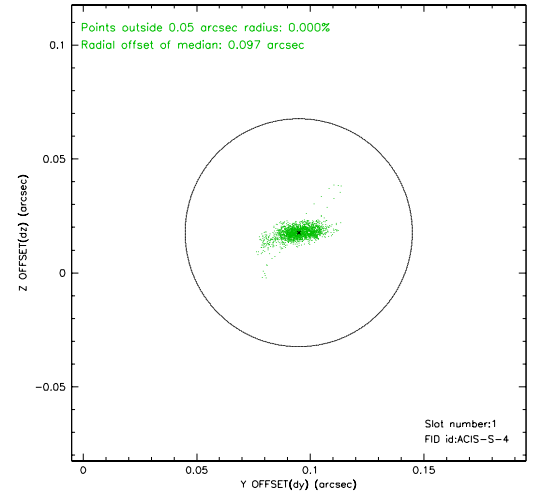
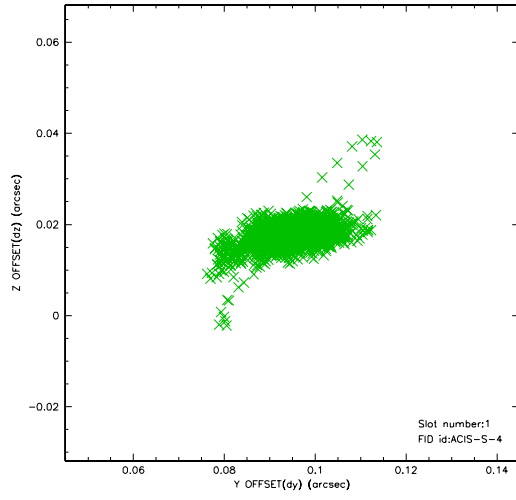


## 2.5 FID Slots

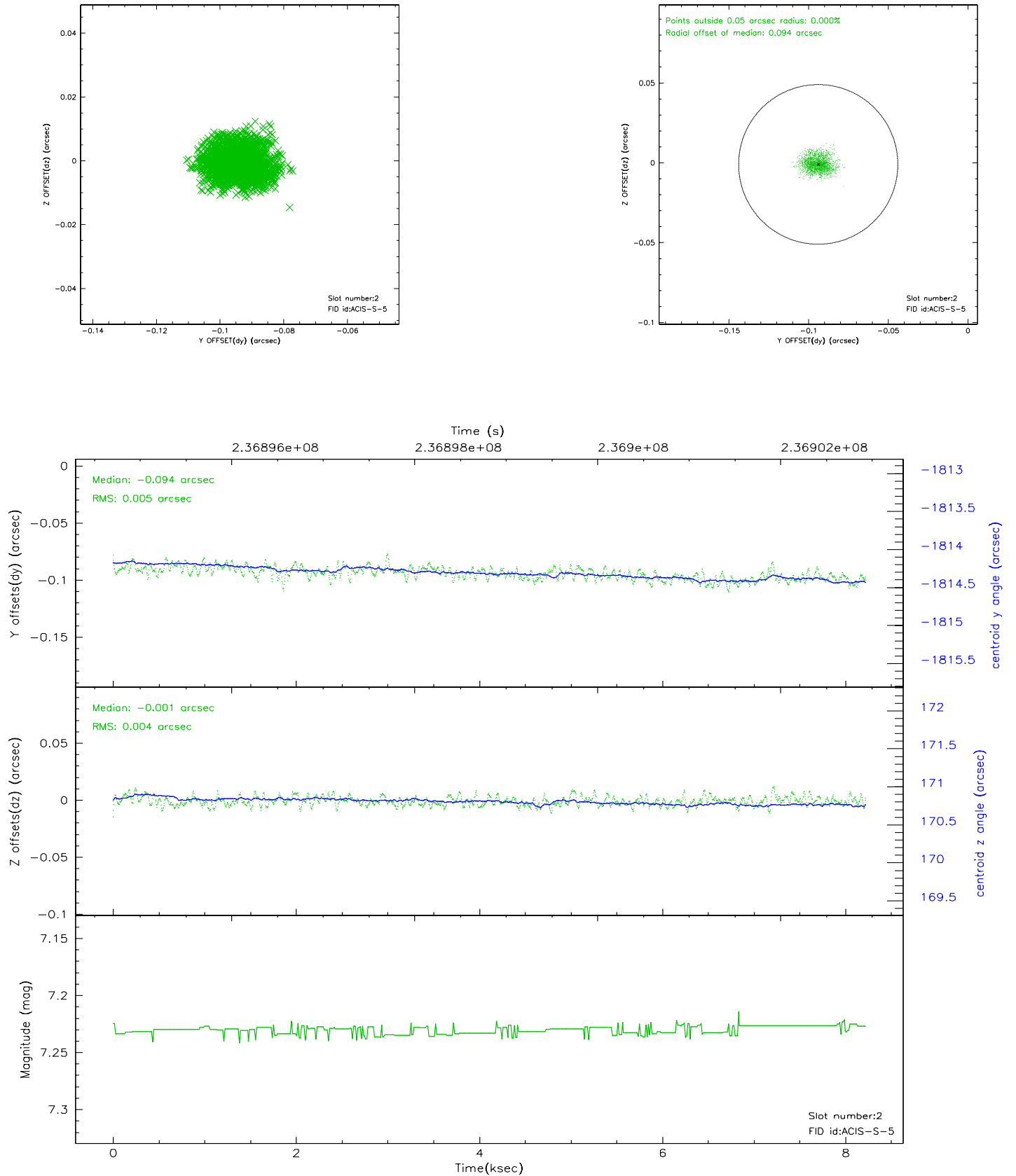
### 2.5.1 Slot 0



## 2.5.2 Slot 1

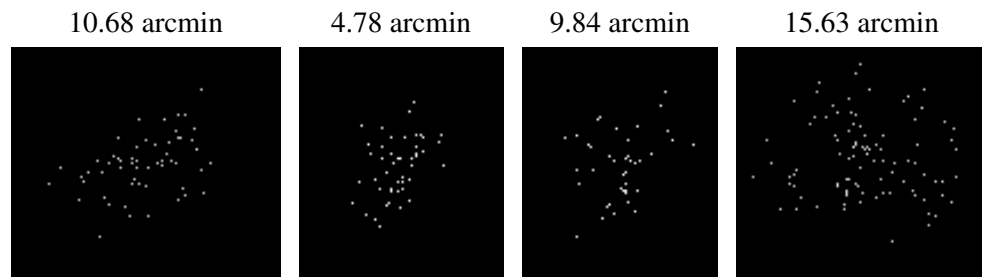


### 2.5.3 Slot 2





### 3 Point Sources



## A Summary

### A.1 Status

V&V Scientist	Jen Lauer
V&V Date (YYYY-MM-DD)	2006.03.13
V&V Edition	1
V&V Disposition and Status	OK
V&V Charge Time	8.211199

### A.2 Comments