

V&V Reference Report

L2 ASCDS Version : 7.6.7.1

Observation 6164 - L2 Version 001
Chandra X-Ray Center

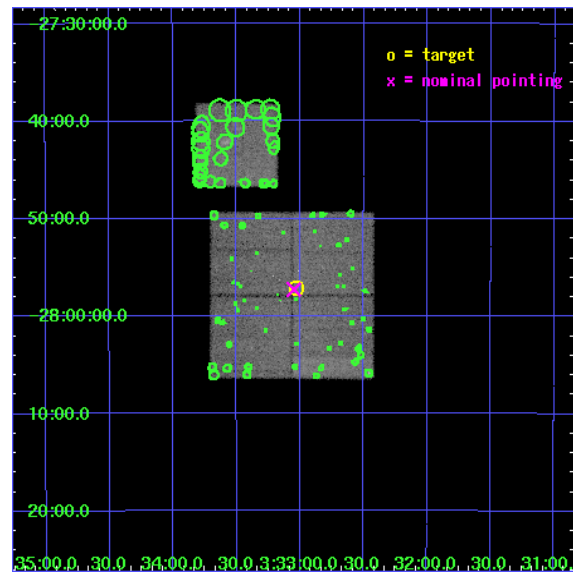
L2 Processing Date : Apr 10 2006

Contents

1	Front	2
2	OBI	3
2.1	OBI	3
2.1.1	Images	3
2.1.2	Bias	3
2.1.3	Parameters	4
2.1.4	Events	4
2.2	Compared Parameters	5
2.3	Aspect	6
2.4	Star Slots	9
2.4.1	Slot 3	9
2.4.2	Slot 4	10
2.4.3	Slot 5	11
2.4.4	Slot 6	12
2.4.5	Slot 7	13
2.5	FID Slots	14
2.5.1	Slot 0	14
2.5.2	Slot 1	15
2.5.3	Slot 2	16
3	Point Sources	17
A	Summary	18
A.1	Status	18
A.2	Comments	18

1 Front

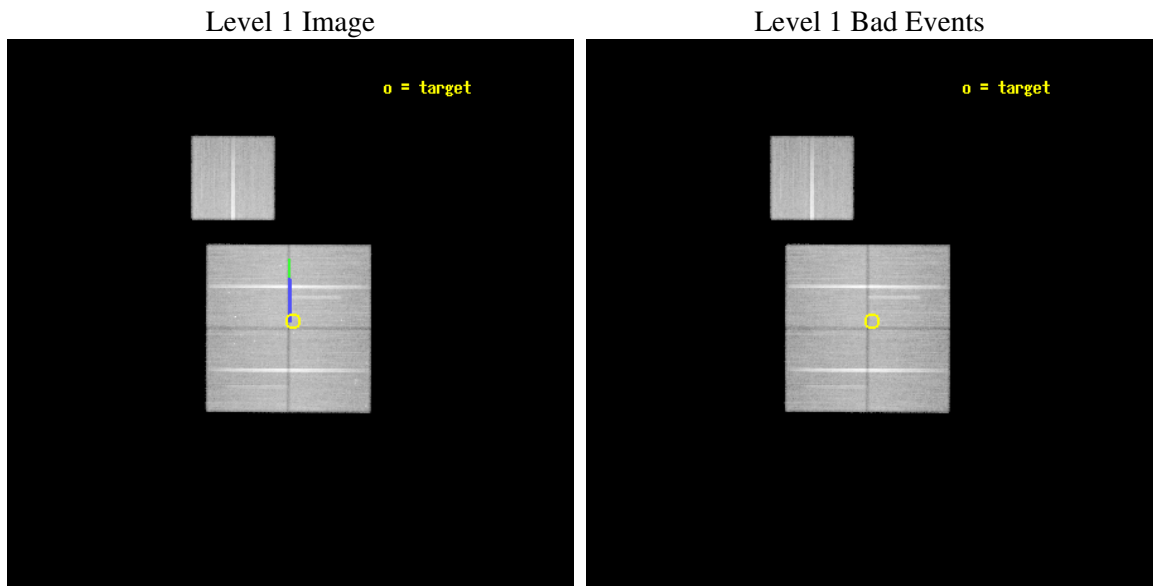
seq_num	900329
obs_id	6164
title	The Extended Chandra Deep Field-South Survey: A Public Chandra Legacy
observer	Prof. William Brandt
object	Extended CDF-S #4
dtcycle	0
cycle	P
ra_targ	53.2574
dec_targ	-27.95267
ra_nom	53.262222855691
dec_nom	-27.954456163465
roll_nom	0.21094583263039
revision	2
ontime	70044.417884707
livetime	69129.235999093
ontime0	70044.417864859
ontime1	70034.994894147
ontime2	70047.55886516
ontime3	70044.417884707
ontime6	70044.417864919
l2events	191661



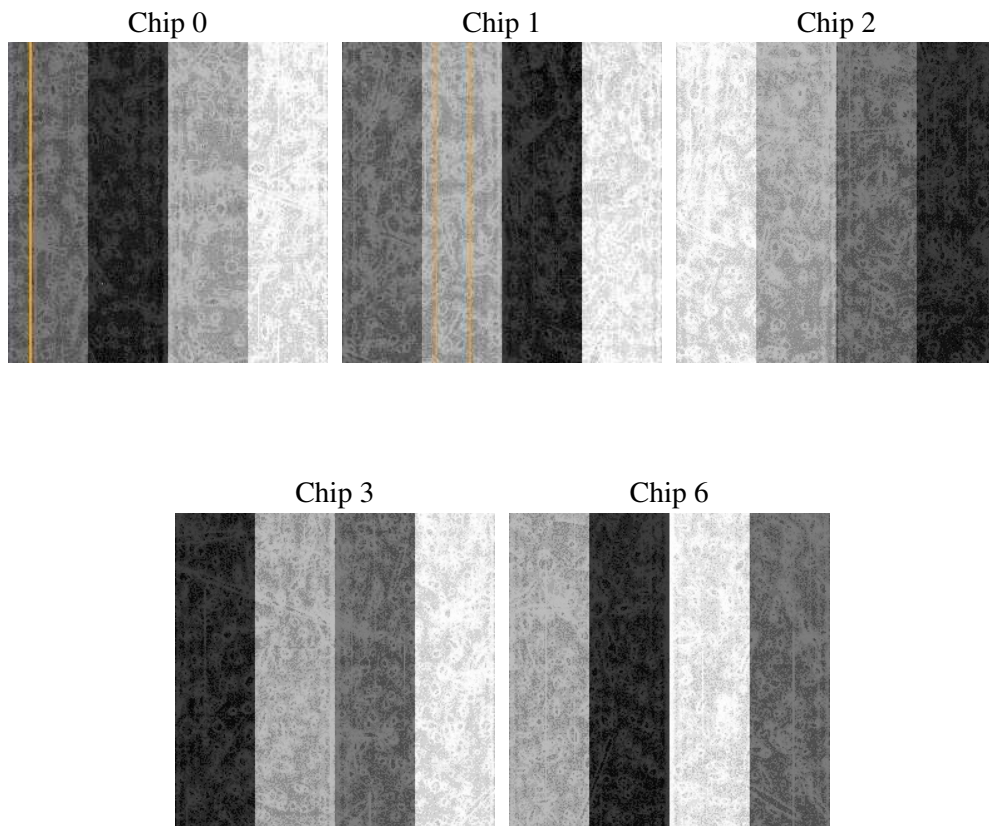
2 OBI

2.1 OBI

2.1.1 Images



2.1.2 Bias



2.1.3 Parameters

obi_num	0
ascdsver	7.6.7.1
caldbver	3.2.1
date	2006-04-10T12:24:43
revision	2

sched_exp_time	70000.000000
ontime	70047.77909404
ontime0	70047.779054284
ontime1	70038.356083572
ontime2	70050.920074493
ontime3	70047.77909404
ontime6	70047.779074252
l1events	2268860

2.1.4 Events

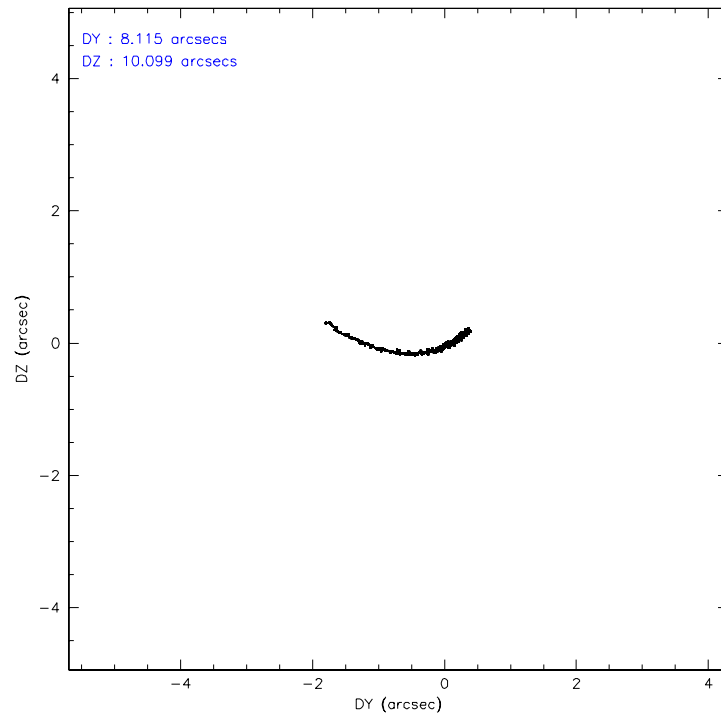
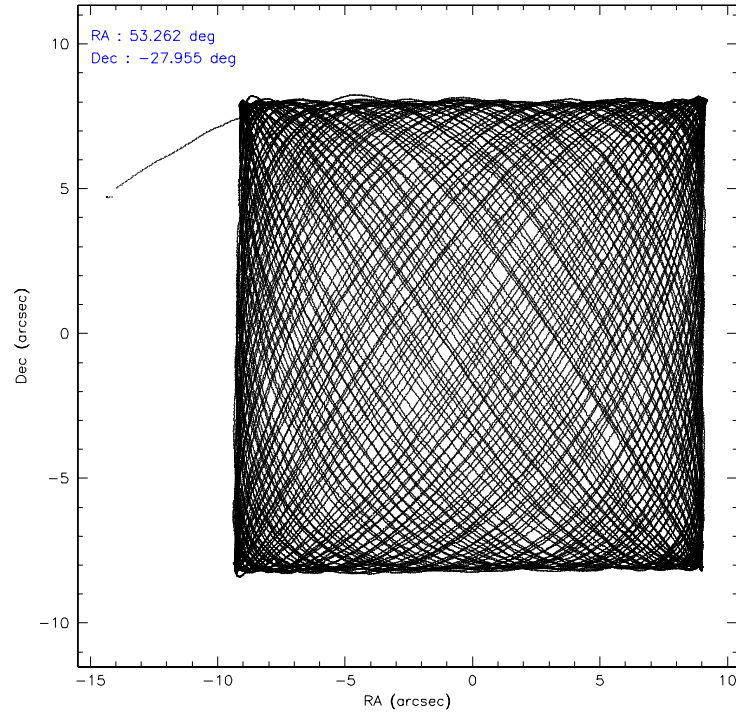
	ccd 0	ccd 1	ccd 2	ccd 3	ccd 6
level 1 events	430323	430042	482166	461758	464571
rejected events	385762	378567	437233	419687	417708
rejected %	89%	88%	90%	90%	89%

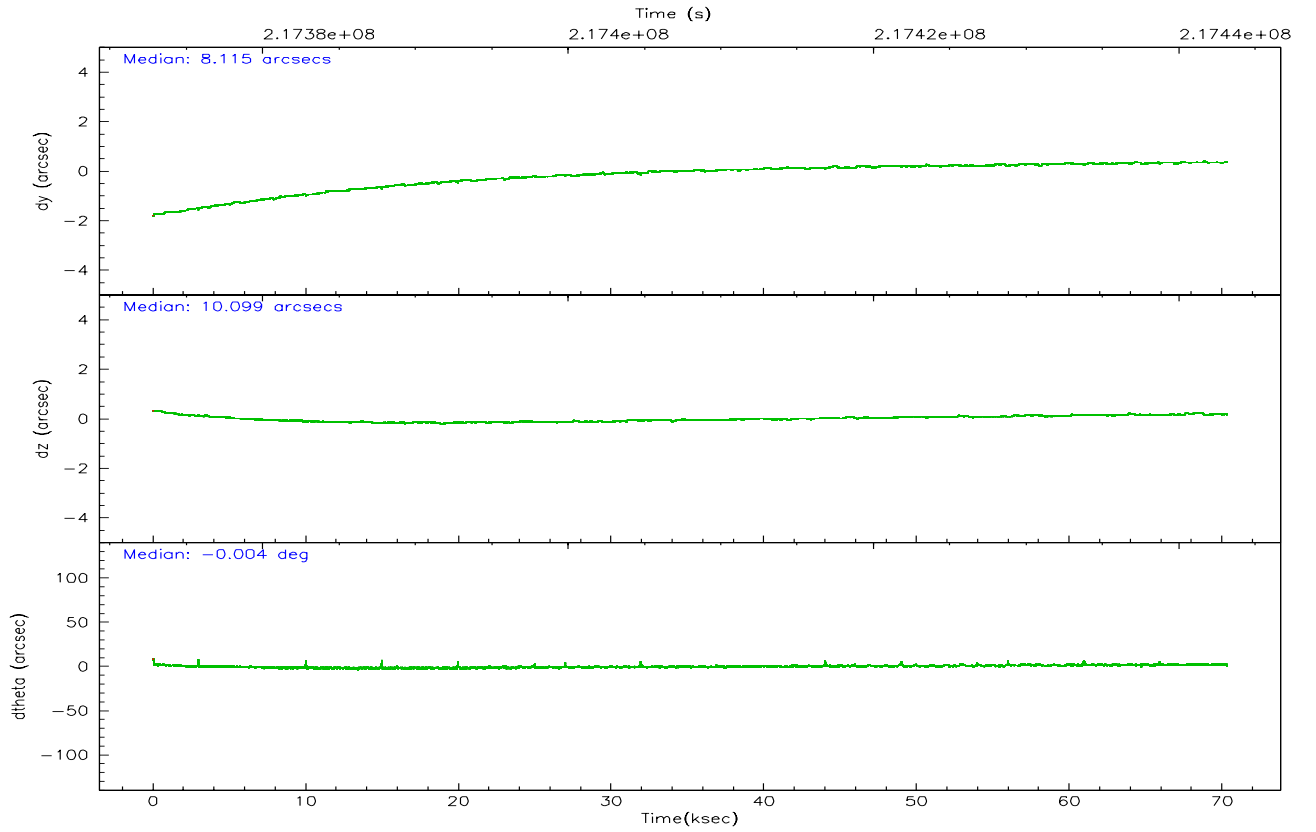
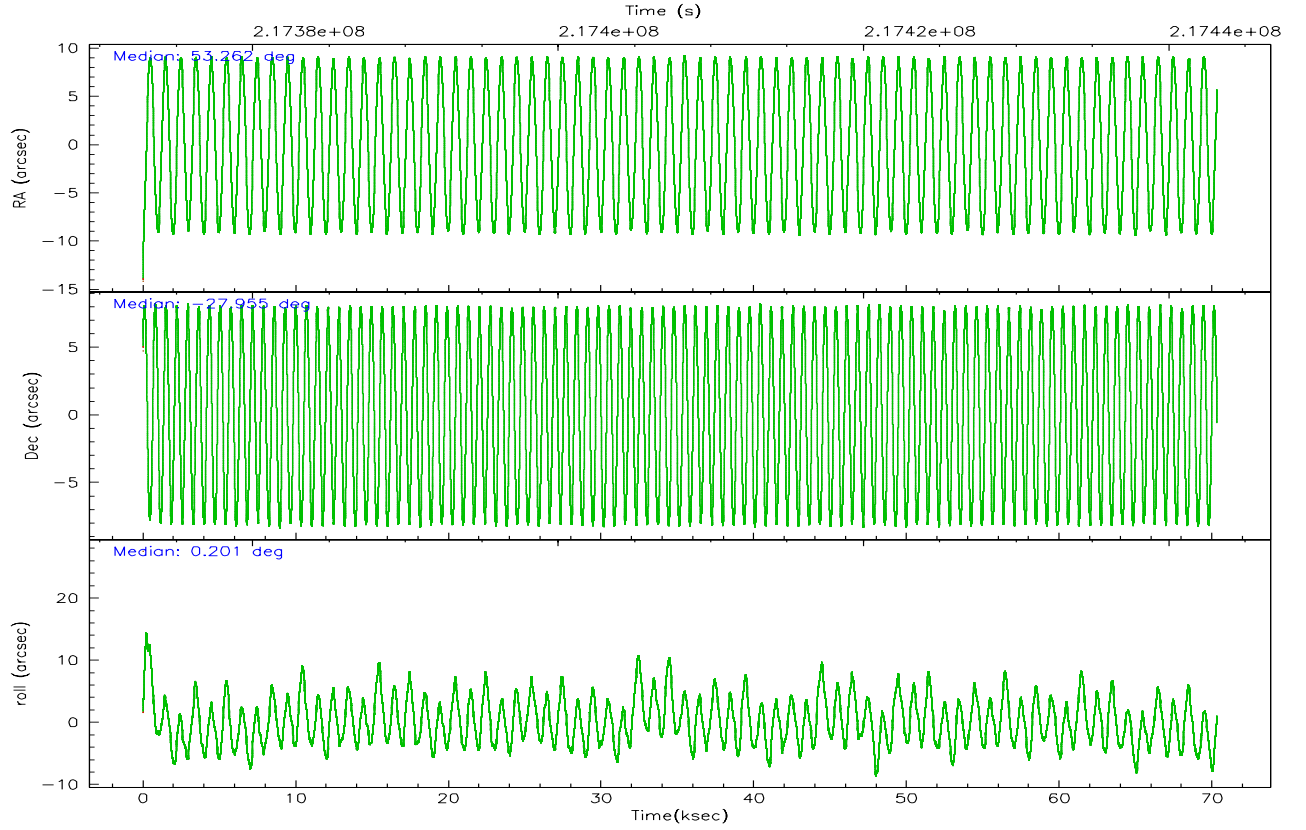
	ccd 0	ccd 1	ccd 2	ccd 3	ccd 6
grade 0 events	15424	19183	16650	14663	16747
	3%	4%	3%	3%	3%
grade 1 events	220	247	269	270	202
	0%	0%	0%	0%	0%
grade 2 events	10428	11053	10456	9113	9897
	2%	2%	2%	1%	2%
grade 3 events	5225	5642	4826	4950	5321
	1%	1%	1%	1%	1%
grade 4 events	4813	5466	4909	5006	5191
	1%	1%	1%	1%	1%
grade 5 events	15926	17010	14986	17765	17696
	3%	3%	3%	3%	3%
grade 6 events	8673	10132	8095	8341	9709
	2%	2%	1%	1%	2%
grade 7 events	369614	361309	421975	401650	399808
	85%	84%	87%	86%	86%

2.2 Compared Parameters

Parameter	Planned	Actual	Parameter	Planned	Actual
Instrument	ACIS	ACIS	Obspar format version number	6	6
Detector	ACIS-01236	ACIS-01236	Obspar file type	PREDICTED	ACTUAL
Grating	NONE	NONE	Obspar update status	NONE	UPDATED
Data mode	VFAINT	VFAINT	On-chip summing requested	N	N
Observation mode	POINTING	POINTING	Subarray requested	NONE	NONE
Pointing RA	53.235516	53.26222285569059	Alternating exposures requested	N	N
Pointing Dec	-27.968328	-27.95445616346476	Primary exposure time	0.000000	3.1
Pointing Roll	359.989737	0.2109458326303853			
Roll angle	0.000000	0.000000			
Roll tolerance	2.000000	2.000000			
Roll constraint allows 180D rotation	N	N			
SIM focus pos (mm)	-0.782348	-0.7809083437167272			
SIM defocus (mm)	0	0.001439871863259334			
SIM translation stage pos (mm)	-233.592463	-233.5874344608287			
SIM translation stage offset (mm)	0	-0.005018542100998502			
Observation start time	217373165.184000	217372159.16465			
Observation start date	2004-11-20T21:25:01	2004-11-20T21:09:19			
Observation end time	217443165.184000	217443950.16787			
Observation end date	2004-11-21T16:51:41	2004-11-21T17:05:50			
Read mode	TIMED	TIMED			

2.3 Aspect



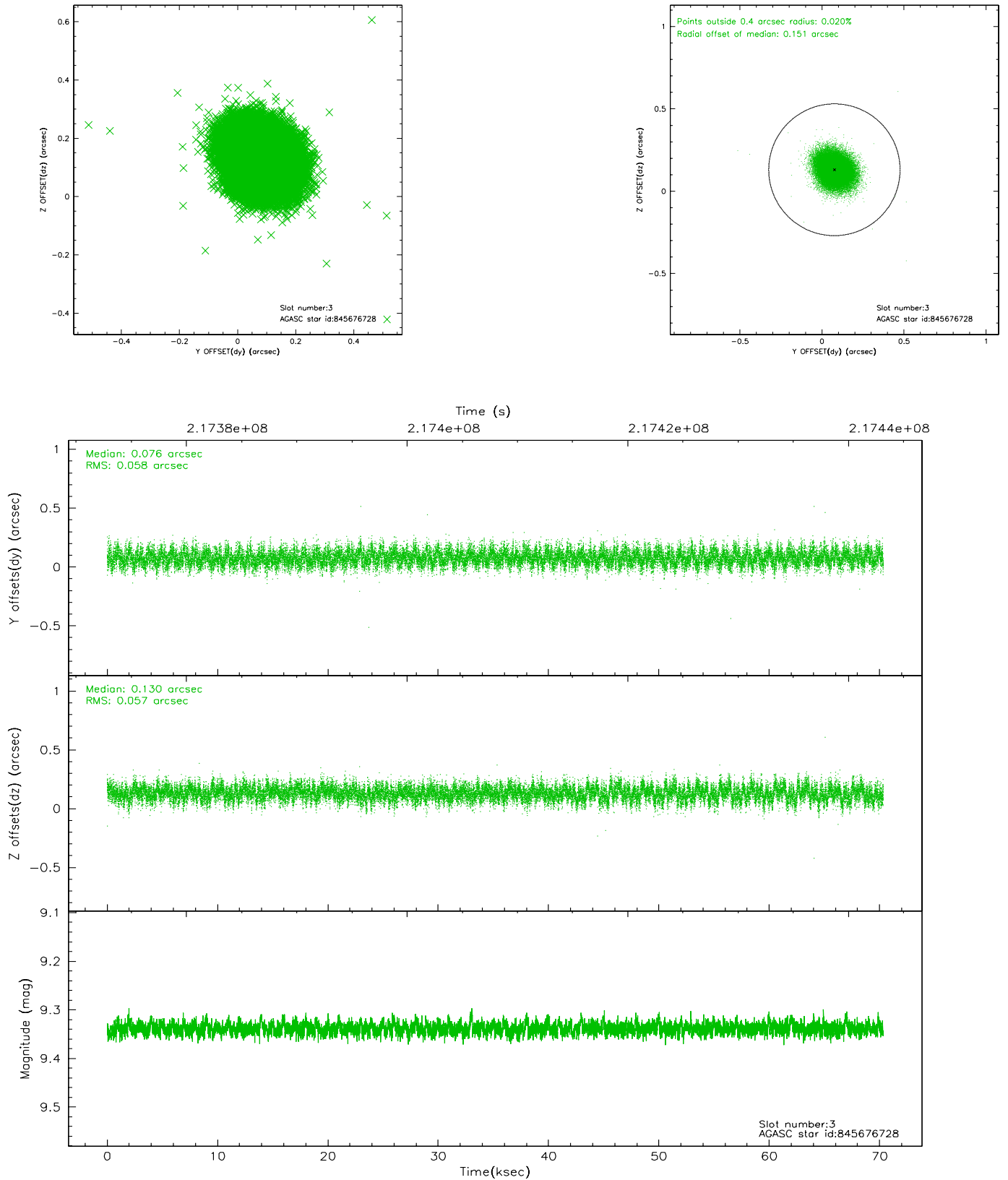


Slot Statistics

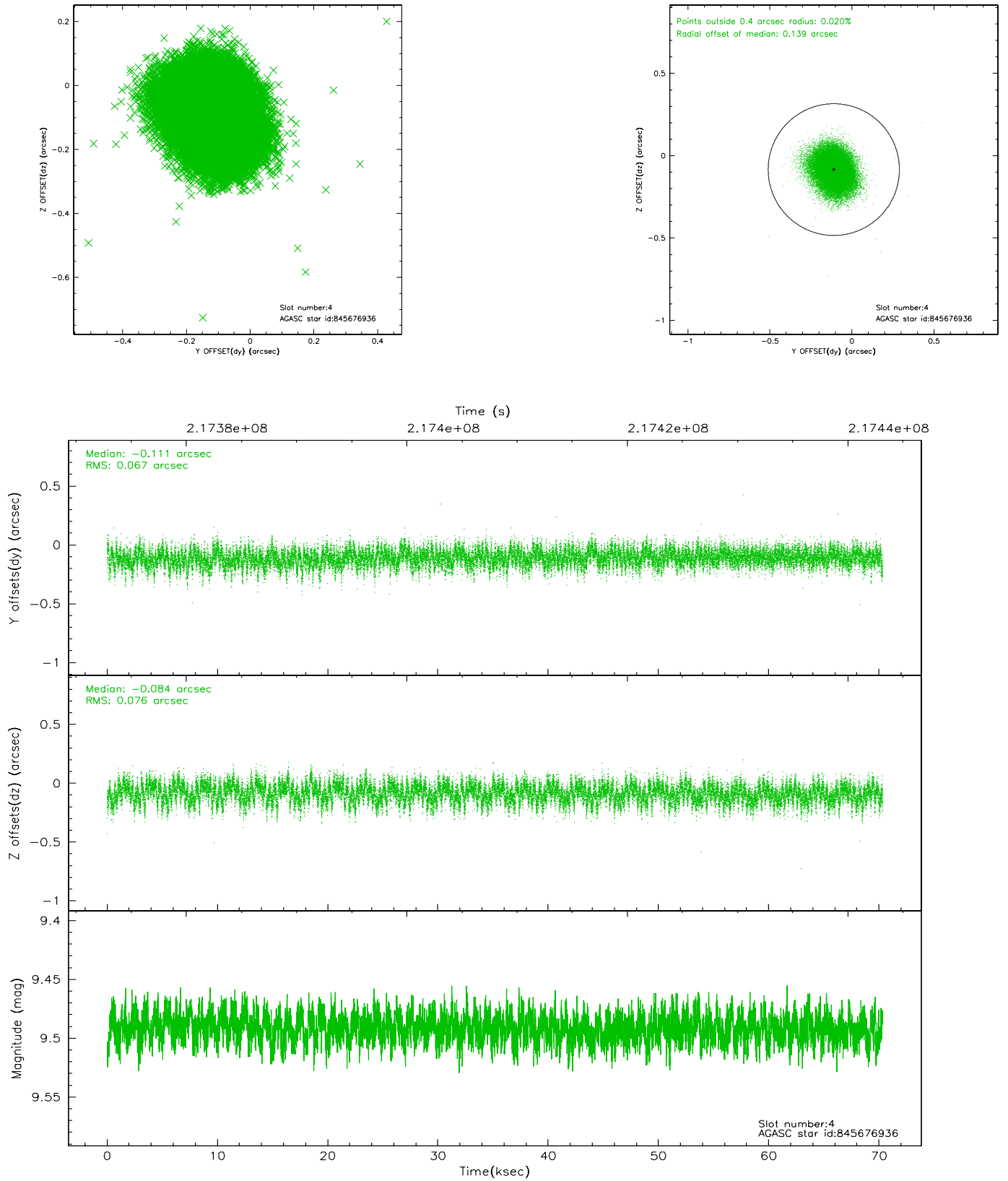
slot	status	id	mag	n_pts	med_dy	med_dz	dr1	dr2	ra	dec	mean_y	mean_z
0	FID	ACIS-I-1	7.24	17157	0.019	0.013	0.010	0.016	0.000000	0.000000	931.79	-833.54
1	FID	ACIS-I-5	7.23	17158	-0.078	0.066	0.035	0.048	0.000000	0.000000	-1816.50	1063.95
2	FID	ACIS-I-6	7.25	17158	-0.031	-0.007	0.032	0.046	0.000000	0.000000	397.28	1708.38
3	GUIDE	845676728	9.34	34291	0.076	0.130	0.087	0.140	52.877179	-27.664318	-1142.44	1092.72
4	GUIDE	845676936	9.49	34291	-0.111	-0.084	0.108	0.173	52.843773	-27.880153	-1246.23	315.22
5	GUIDE	845807880	8.78	34293	-0.013	-0.108	0.081	0.129	53.382027	-27.886093	466.46	296.04
6	GUIDE	845814592	9.04	34270	0.053	0.007	0.091	0.146	53.853010	-28.336603	1958.22	-1330.55
7	GUIDE	845816224	10.20	34273	-0.006	0.061	0.139	0.229	53.578992	-28.631005	1086.69	-2386.59

2.4 Star Slots

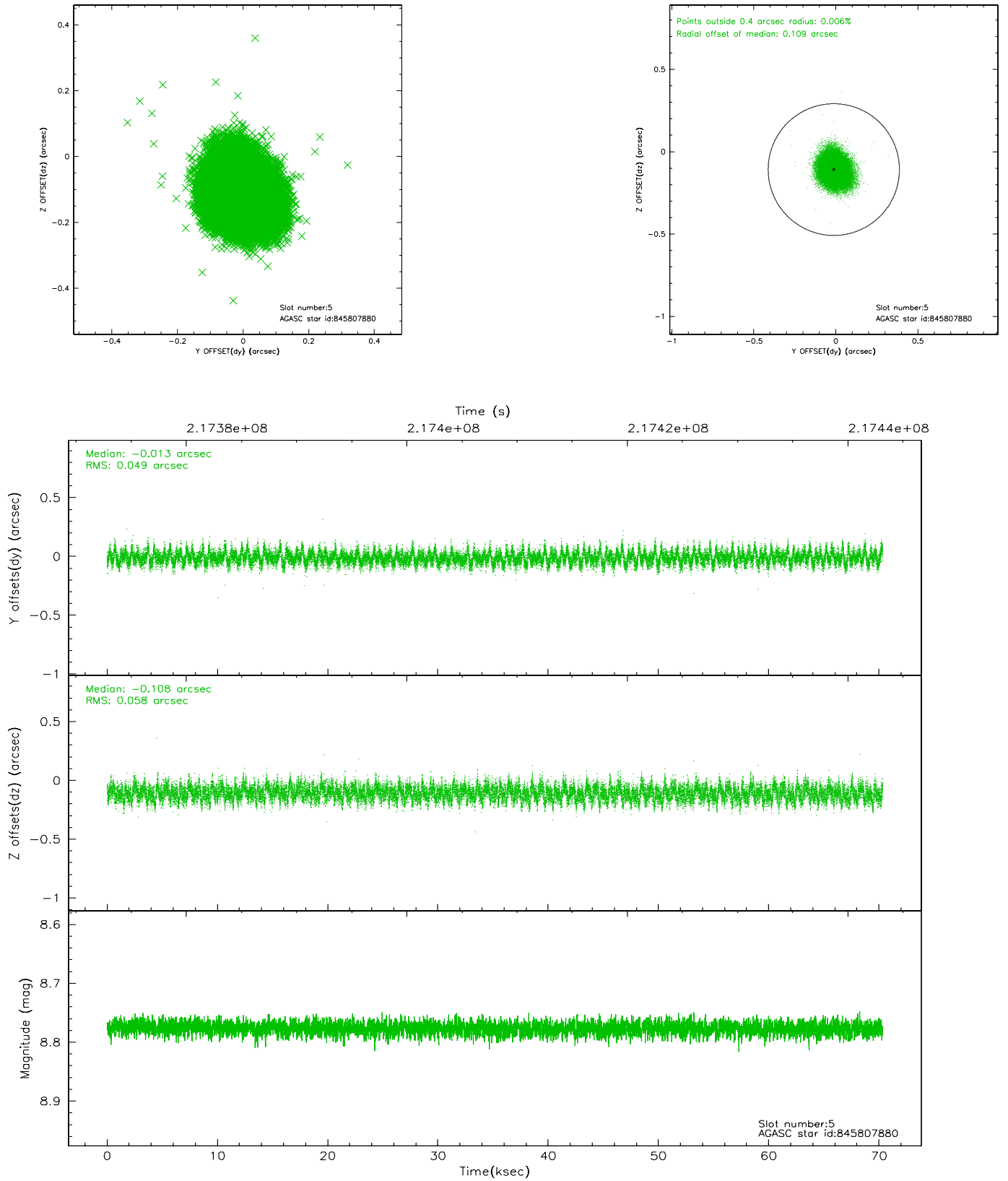
2.4.1 Slot 3



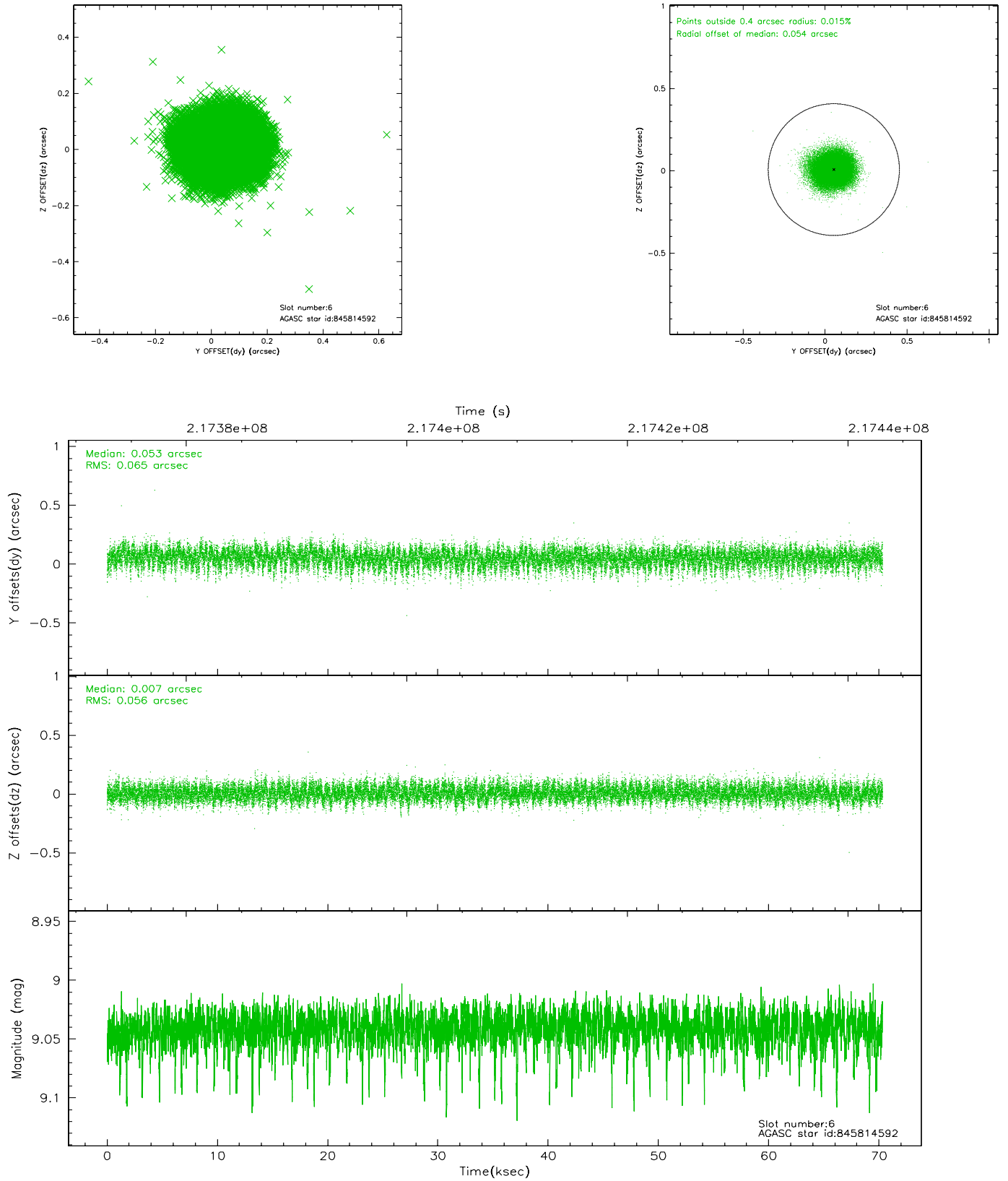
2.4.2 Slot 4



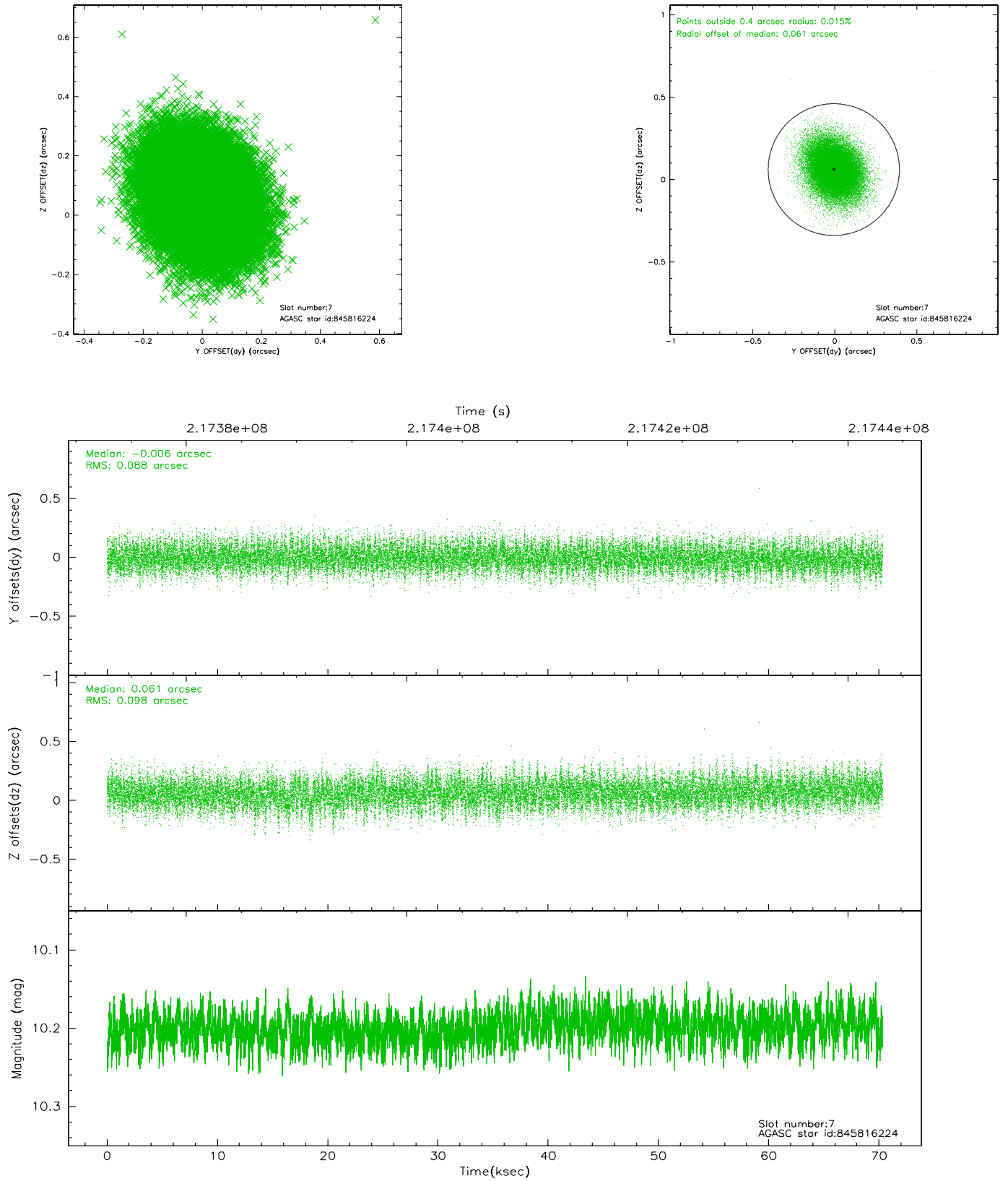
2.4.3 Slot 5



2.4.4 Slot 6

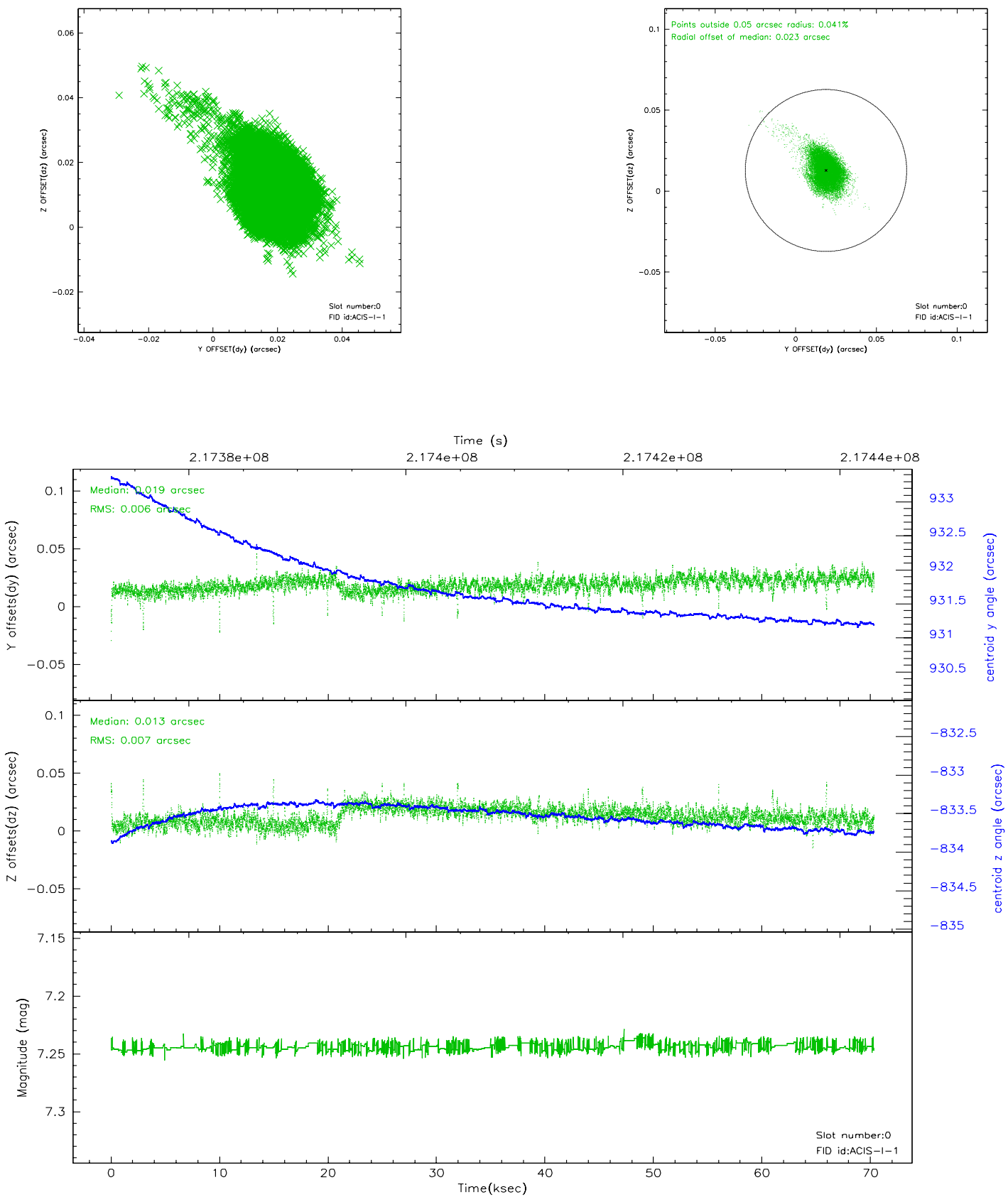


2.4.5 Slot 7

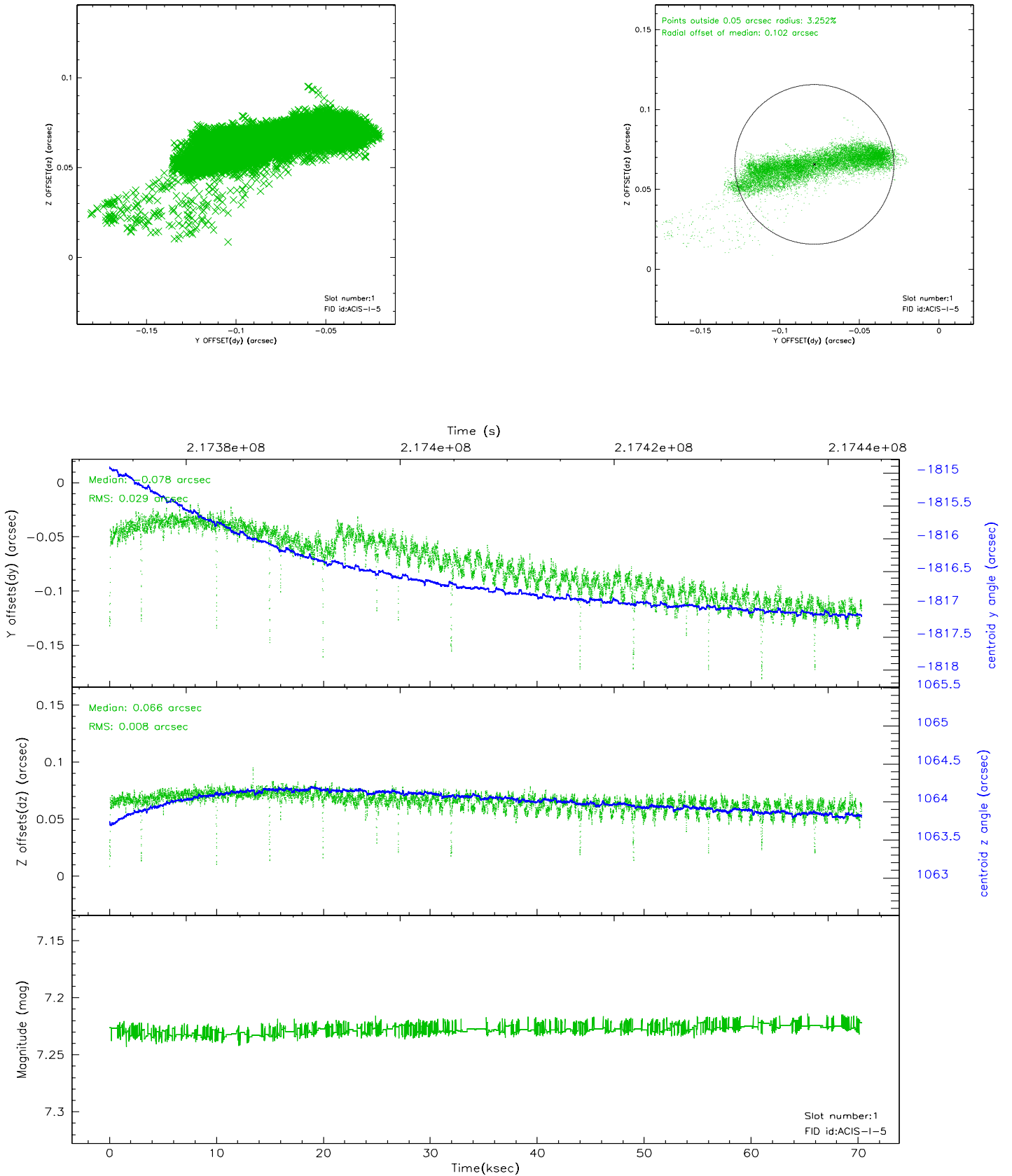


2.5 FID Slots

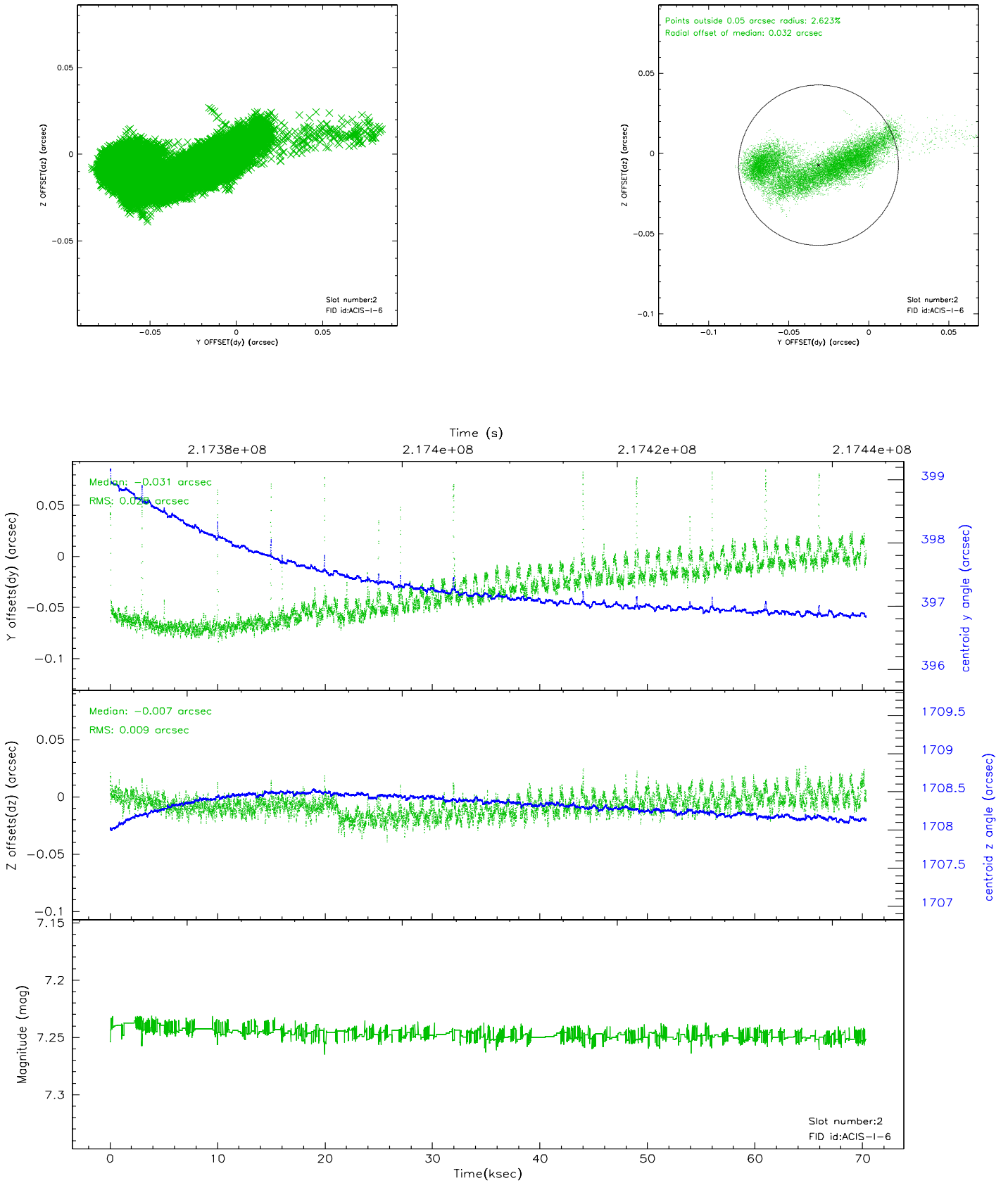
2.5.1 Slot 0



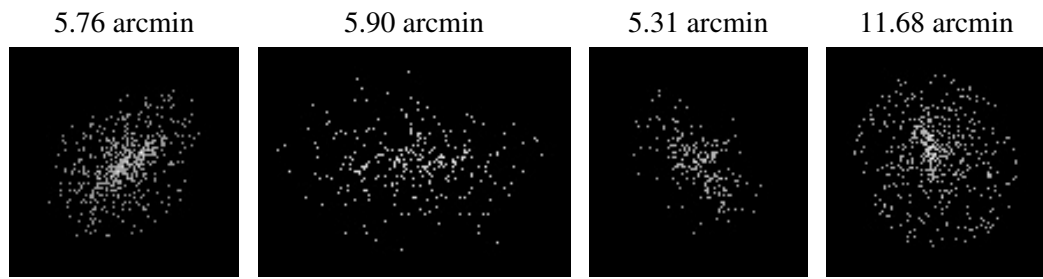
2.5.2 Slot 1



2.5.3 Slot 2



3 Point Sources



A Summary

A.1 Status

V&V Scientist	Doug Morgan
V&V Date (YYYY-MM-DD)	2006.04.10
V&V Edition	1
V&V Disposition and Status	OK
V&V Charge Time	70.044

A.2 Comments