

V&V Reference Report

L2 ASCDS Version : 7.6.7

Observation 5038 - L2 Version 002
Chandra X-Ray Center

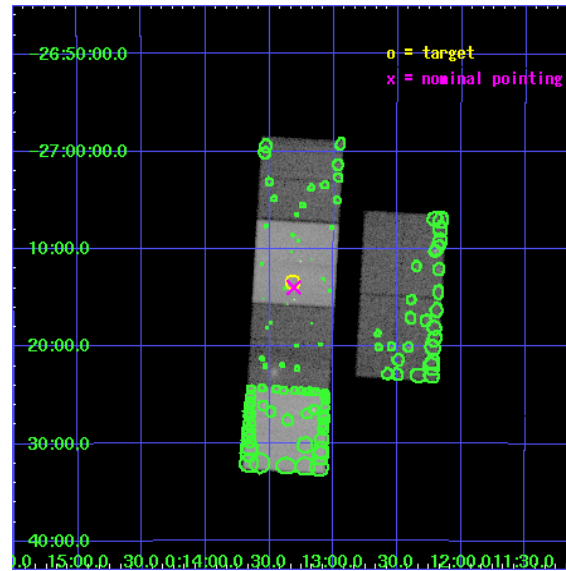
L2 Processing Date: Feb 19 2006

Contents

| | | |
|----------|-------------------------------|-----------|
| 1 | Front | 2 |
| 2 | OBI | 3 |
| 2.1 | OBI | 3 |
| 2.1.1 | Images | 3 |
| 2.1.2 | Bias | 3 |
| 2.1.3 | Parameters | 4 |
| 2.1.4 | Events | 4 |
| 2.2 | Compared Parameters | 5 |
| 2.3 | Aspect | 6 |
| 2.4 | Star Slots | 9 |
| 2.4.1 | Slot 3 | 9 |
| 2.4.2 | Slot 4 | 10 |
| 2.4.3 | Slot 5 | 11 |
| 2.4.4 | Slot 6 | 12 |
| 2.4.5 | Slot 7 | 13 |
| 2.5 | FID Slots | 14 |
| 2.5.1 | Slot 0 | 14 |
| 2.5.2 | Slot 1 | 15 |
| 2.5.3 | Slot 2 | 16 |
| 3 | Point Sources | 17 |
| A | Summary | 18 |
| A.1 | Status | 18 |
| A.2 | Comments | 18 |

1 Front

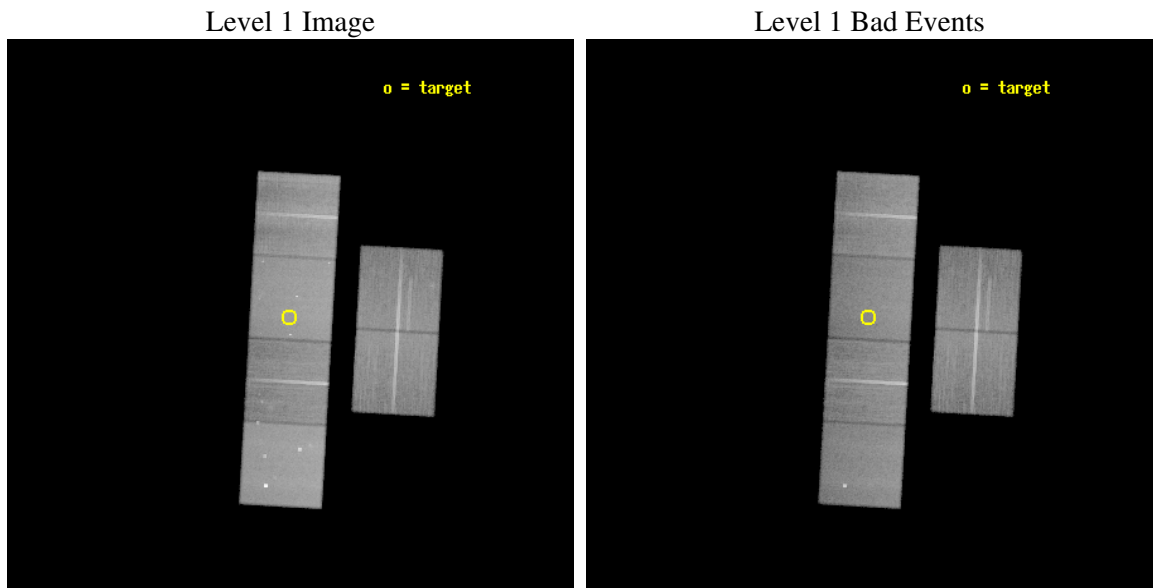
| | |
|----------|--|
| seq_num | 900344 |
| obs_id | 5038 |
| title | The Missing Baryons in the Local Group |
| observer | Prof Joel Bregman |
| object | MS30.7 |
| dtcycle | 0 |
| cycle | P |
| ra_targ | 3.32875 |
| dec_targ | -27.223333 |
| ra_nom | 3.3274525184893 |
| dec_nom | -27.232910726351 |
| roll_nom | 273.25704434112 |
| revision | 2 |
| ontime | 50143.999813199 |
| livetime | 49509.046294473 |
| ontime2 | 50140.758823007 |
| ontime3 | 50143.999813199 |
| ontime5 | 50143.999813199 |
| ontime6 | 50143.999813199 |
| ontime7 | 50143.999813199 |
| ontime8 | 50143.999813199 |
| l2events | 577352 |



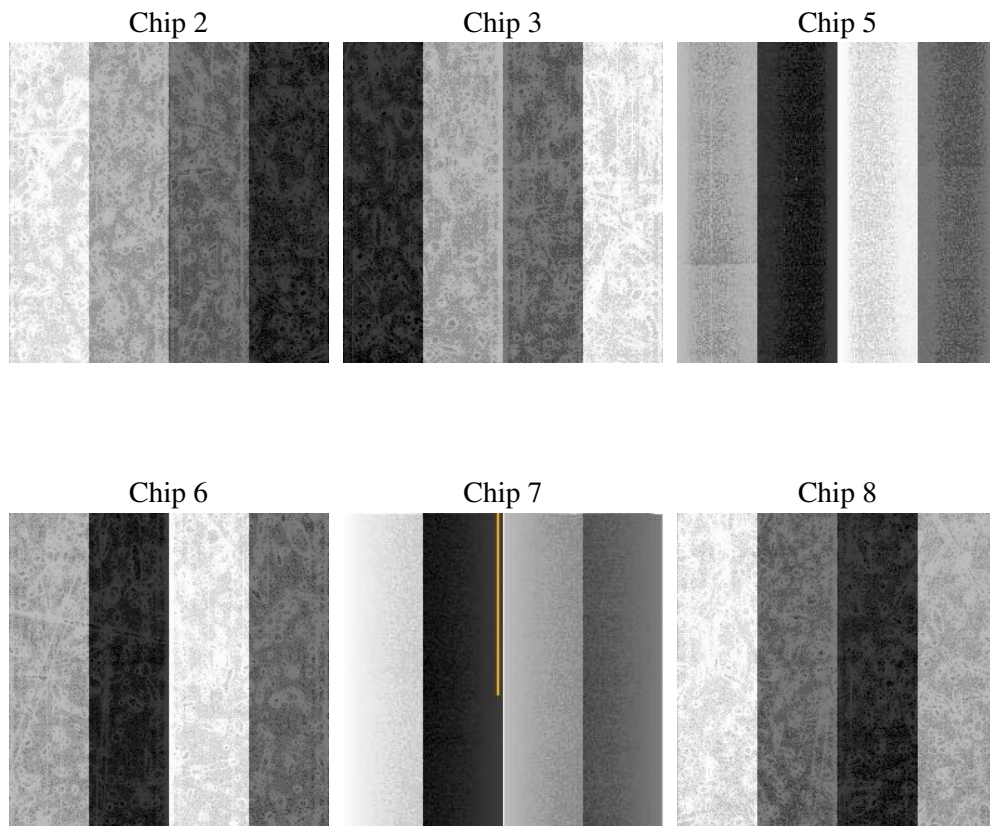
2 OBI

2.1 OBI

2.1.1 Images



2.1.2 Bias



2.1.3 Parameters

| | |
|----------|---------------------|
| obi_num | 1 |
| ascdsver | 7.6.7 |
| caldsver | 3.2.1 |
| date | 2006-02-19T20:15:59 |
| revision | 2 |

| | |
|----------------|-----------------|
| sched_exp_time | 50000.000000 |
| ontime | 50151.238486171 |
| ontime2 | 50147.997476071 |
| ontime3 | 50151.238466263 |
| ontime5 | 50151.238466263 |
| ontime6 | 50151.238466263 |
| ontime7 | 50151.238486171 |
| ontime8 | 50151.238466263 |
| l1events | 2577390 |

2.1.4 Events

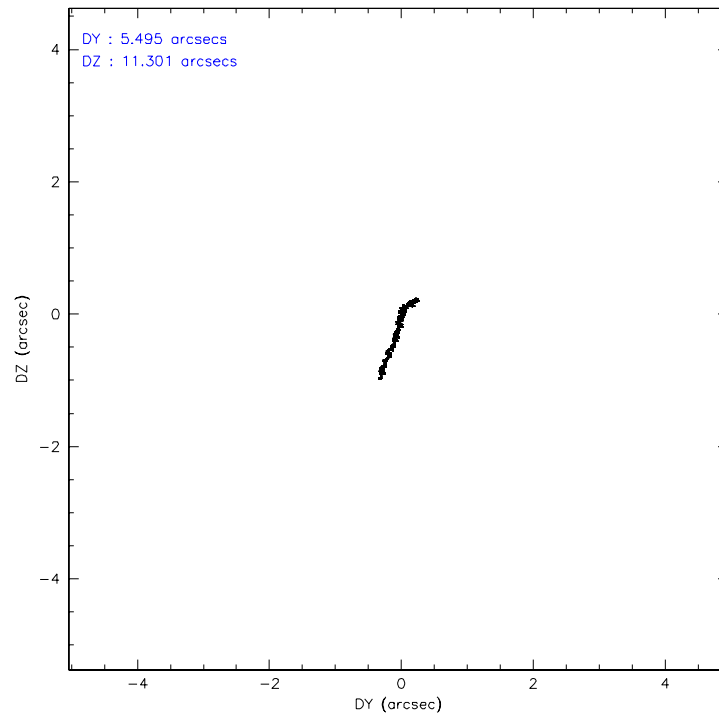
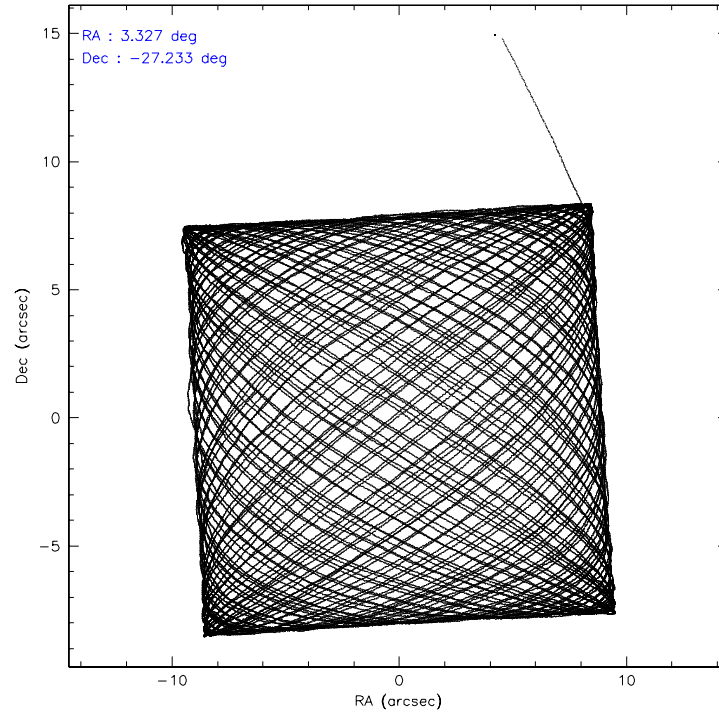
| | ccd 2 | ccd 3 | ccd 5 | ccd 6 | ccd 7 | ccd 8 |
|-----------------|--------|--------|--------|--------|--------|--------|
| level 1 events | 368677 | 347923 | 546507 | 364659 | 494238 | 455386 |
| rejected events | 322991 | 304025 | 303418 | 318147 | 301238 | 353099 |
| rejected % | 87% | 87% | 55% | 87% | 60% | 77% |

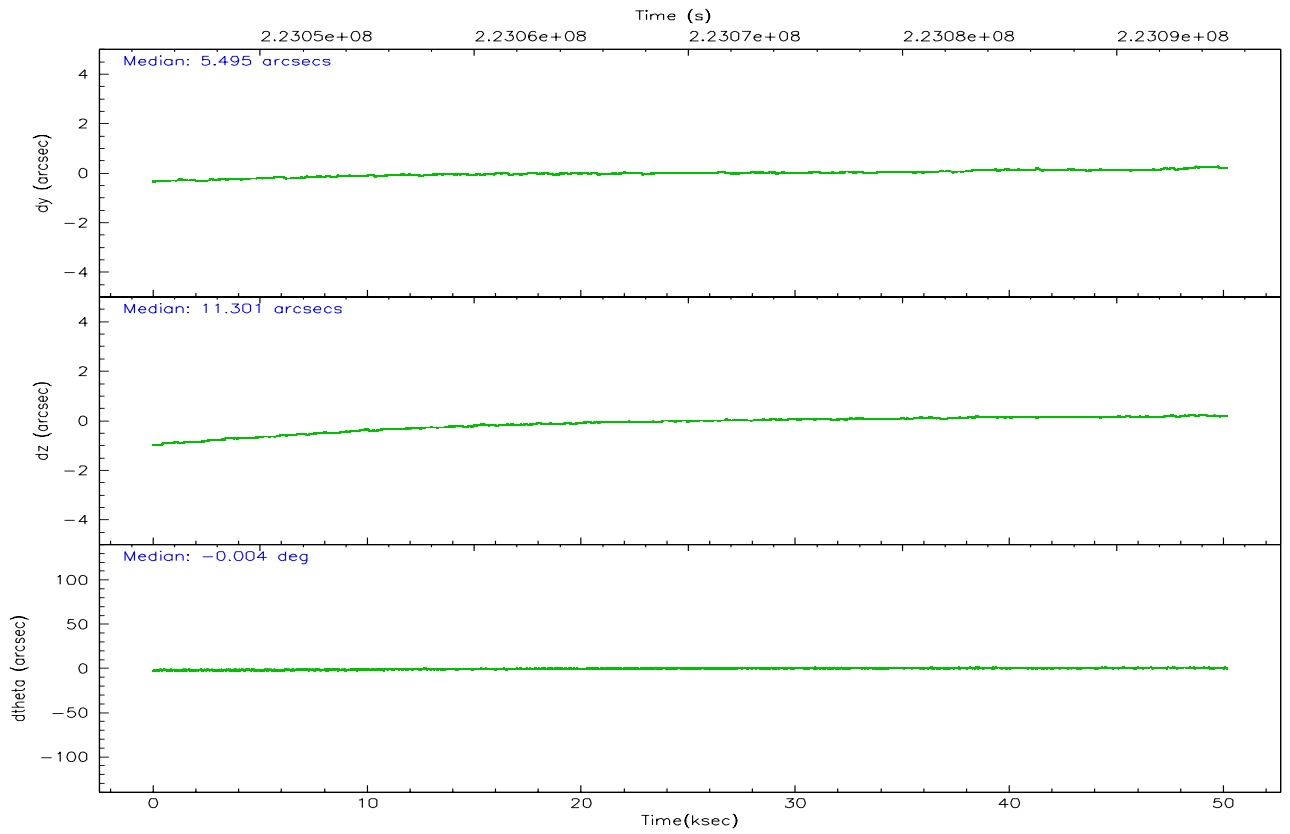
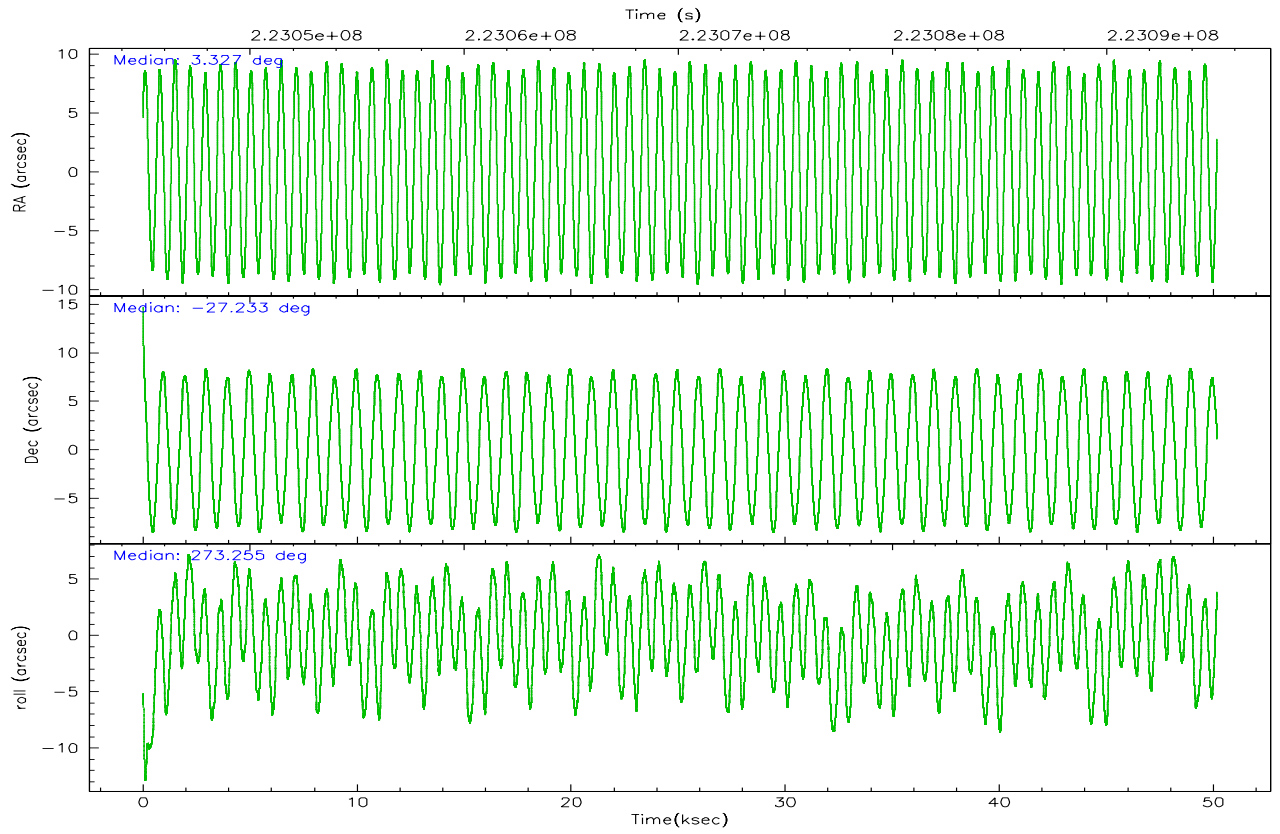
| | ccd 2 | ccd 3 | ccd 5 | ccd 6 | ccd 7 | ccd 8 |
|----------------|--------|--------|--------|--------|--------|--------|
| grade 0 events | 20740 | 20028 | 18473 | 19654 | 11716 | 32829 |
| | 5% | 5% | 3% | 5% | 2% | 7% |
| grade 1 events | 247 | 231 | 495 | 193 | 319 | 321 |
| | 0% | 0% | 0% | 0% | 0% | 0% |
| grade 2 events | 9314 | 8227 | 77649 | 9376 | 48541 | 22418 |
| | 2% | 2% | 14% | 2% | 9% | 4% |
| grade 3 events | 4049 | 4160 | 5570 | 4370 | 9764 | 11013 |
| | 1% | 1% | 1% | 1% | 1% | 2% |
| grade 4 events | 4067 | 4141 | 4824 | 4106 | 9443 | 10055 |
| | 1% | 1% | 0% | 1% | 1% | 2% |
| grade 5 events | 14447 | 15699 | 25721 | 16499 | 31804 | 21608 |
| | 3% | 4% | 4% | 4% | 6% | 4% |
| grade 6 events | 7519 | 7350 | 136599 | 9015 | 113569 | 25990 |
| | 2% | 2% | 24% | 2% | 22% | 5% |
| grade 7 events | 308294 | 288087 | 277176 | 301446 | 269082 | 331152 |
| | 83% | 82% | 50% | 82% | 54% | 72% |

2.2 Compared Parameters

| Parameter | Planned | Actual | Parameter | Planned | Actual |
|-----------------------------------|---------------------|----------------------|---------------------------------|-----------|---------|
| Instrument | ACIS | ACIS | Obspar format version number | 6 | 6 |
| Detector | ACIS-235678 | ACIS-235678 | Obspar file type | PREDICTED | ACTUAL |
| Grating | NONE | NONE | Obspar update status | NONE | UPDATED |
| Data mode | FAINT | FAINT | On-chip summing requested | N | N |
| Observation mode | POINTING | POINTING | Subarray requested | NONE | NONE |
| Pointing RA | 3.310315 | 3.327452518489288 | Alternating exposures requested | N | N |
| Pointing Dec | -27.210361 | -27.23291072635059 | Primary exposure time | 0.000000 | 3.2 |
| Pointing Roll | 273.092575 | 273.2570443411151 | | | |
| SIM focus pos (mm) | -0.684267 | -0.6828225247311905 | | | |
| SIM defocus (mm) | 0 | 0.001444936568705701 | | | |
| SIM translation stage pos (mm) | -190.132523 | -190.1400660498719 | | | |
| SIM translation stage offset (mm) | 0 | 0.00754346686406393 | | | |
| Observation start time | 223045173.184000 | 223044109.67007 | | | |
| Observation start date | 2005-01-25T12:58:29 | 2005-01-25T12:41:49 | | | |
| Observation end time | 223095173.184000 | 223096042.32241 | | | |
| Observation end date | 2005-01-26T02:51:49 | 2005-01-26T03:07:22 | | | |
| Read mode | TIMED | TIMED | | | |

2.3 Aspect



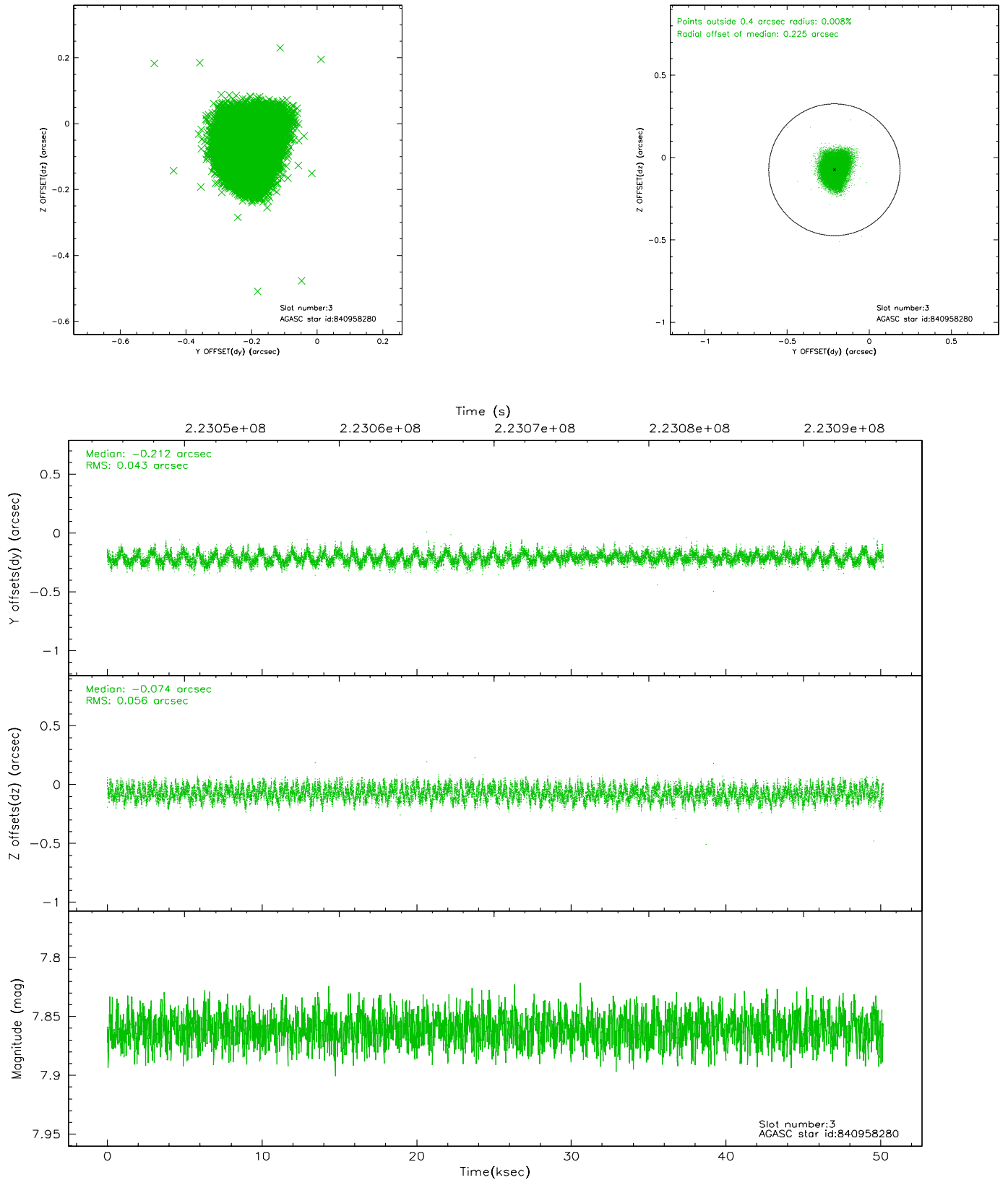


Slot Statistics

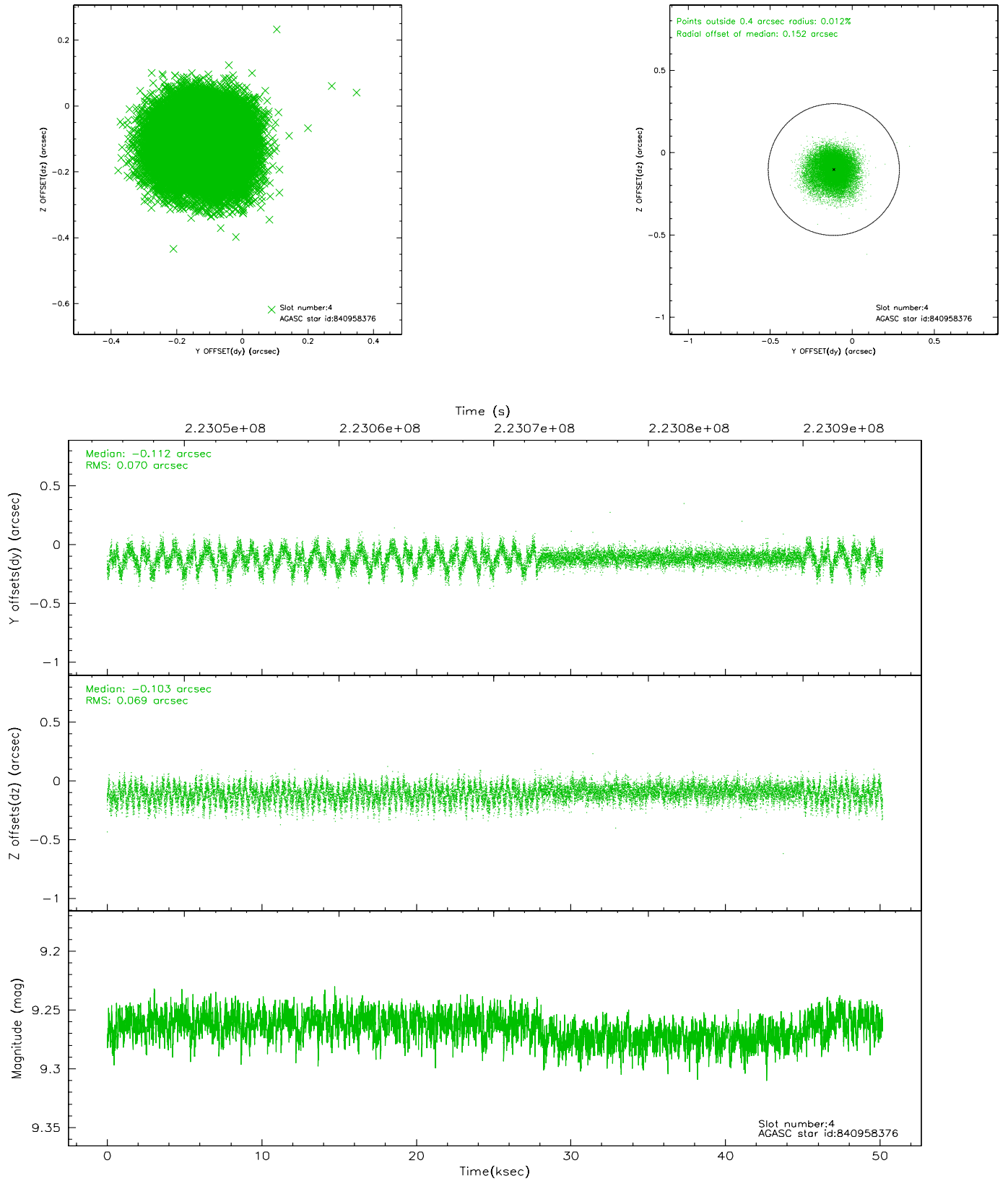
| slot | status | id | mag | n_pts | med_dy | med_dz | dr1 | dr2 | ra | dec | mean_y | mean_z |
|------|--------|-----------|------|-------|--------|--------|-------|-------|----------|------------|----------|----------|
| 0 | FID | ACIS-S-2 | 7.10 | 12241 | -0.047 | 0.003 | 0.009 | 0.014 | 0.000000 | 0.000000 | -758.23 | -1732.46 |
| 1 | FID | ACIS-S-4 | 7.21 | 12240 | 0.049 | 0.022 | 0.011 | 0.024 | 0.000000 | 0.000000 | 2155.14 | 176.08 |
| 2 | FID | ACIS-S-5 | 7.23 | 12240 | -0.034 | -0.016 | 0.008 | 0.014 | 0.000000 | 0.000000 | -1811.10 | 169.66 |
| 3 | GUIDE | 840958280 | 7.86 | 24480 | -0.212 | -0.074 | 0.076 | 0.119 | 3.162179 | -26.853058 | -1310.21 | -404.33 |
| 4 | GUIDE | 840958376 | 9.27 | 24470 | -0.112 | -0.103 | 0.105 | 0.172 | 3.005382 | -26.889381 | -1205.19 | -915.53 |
| 5 | GUIDE | 841354056 | 8.13 | 24412 | 0.046 | 0.054 | 0.062 | 0.101 | 3.289758 | -27.813509 | 2165.03 | -182.23 |
| 6 | GUIDE | 841354256 | 8.45 | 24473 | 0.053 | -0.031 | 0.073 | 0.114 | 3.053997 | -27.784539 | 2021.31 | -926.34 |
| 7 | GUIDE | 841354448 | 9.40 | 24466 | 0.225 | 0.158 | 0.084 | 0.140 | 4.042978 | -27.778320 | 2175.38 | 2218.97 |

2.4 Star Slots

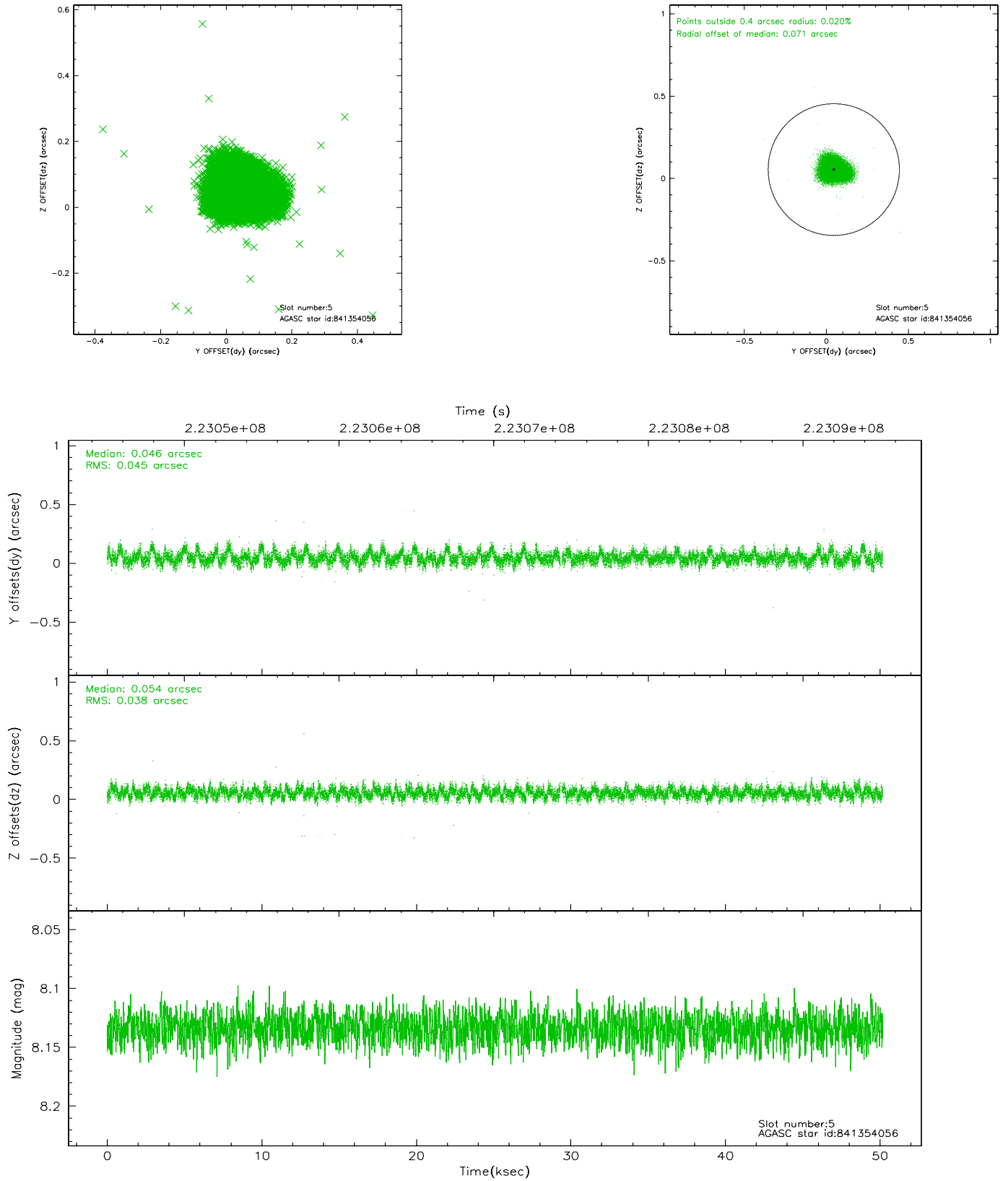
2.4.1 Slot 3



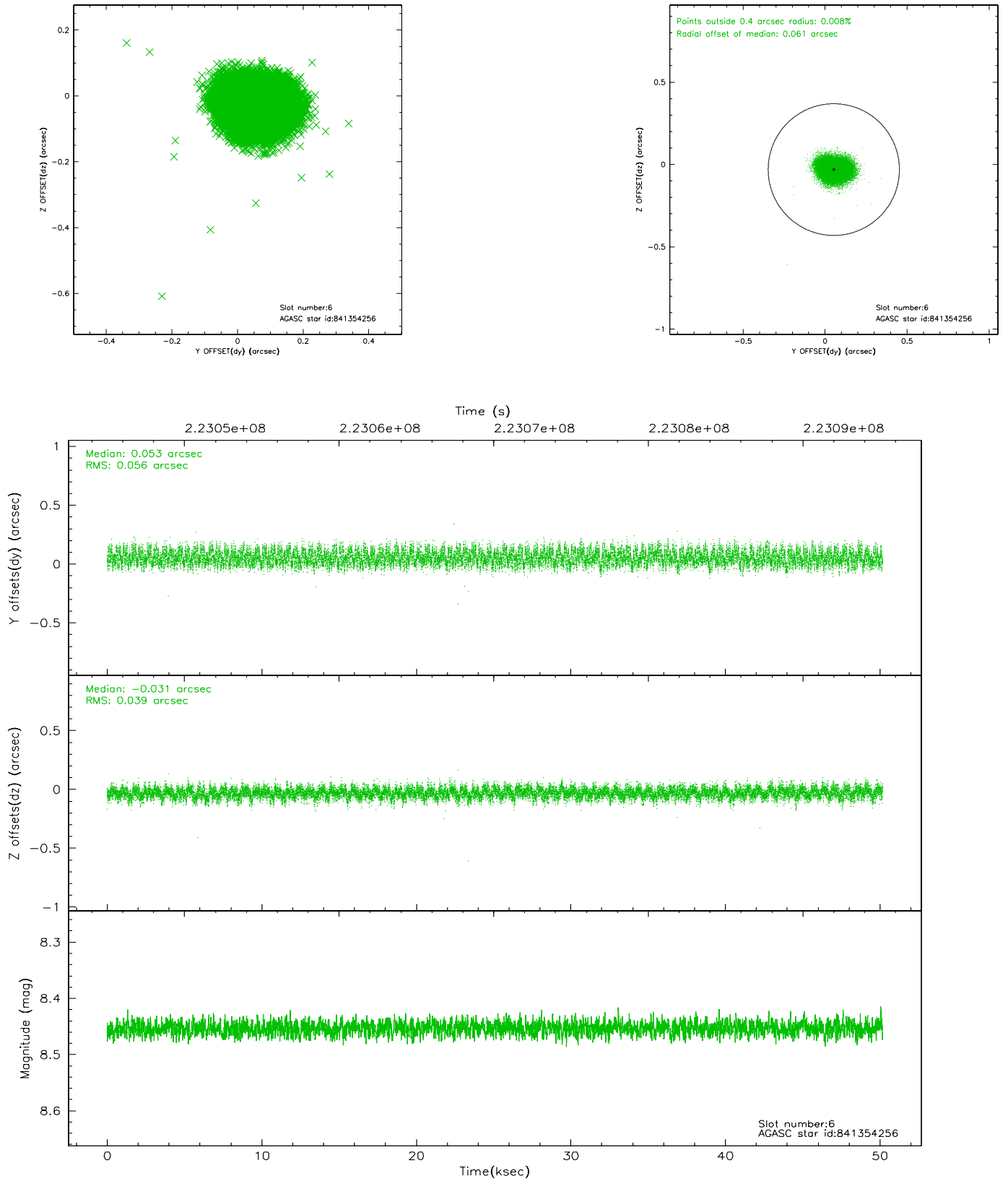
2.4.2 Slot 4



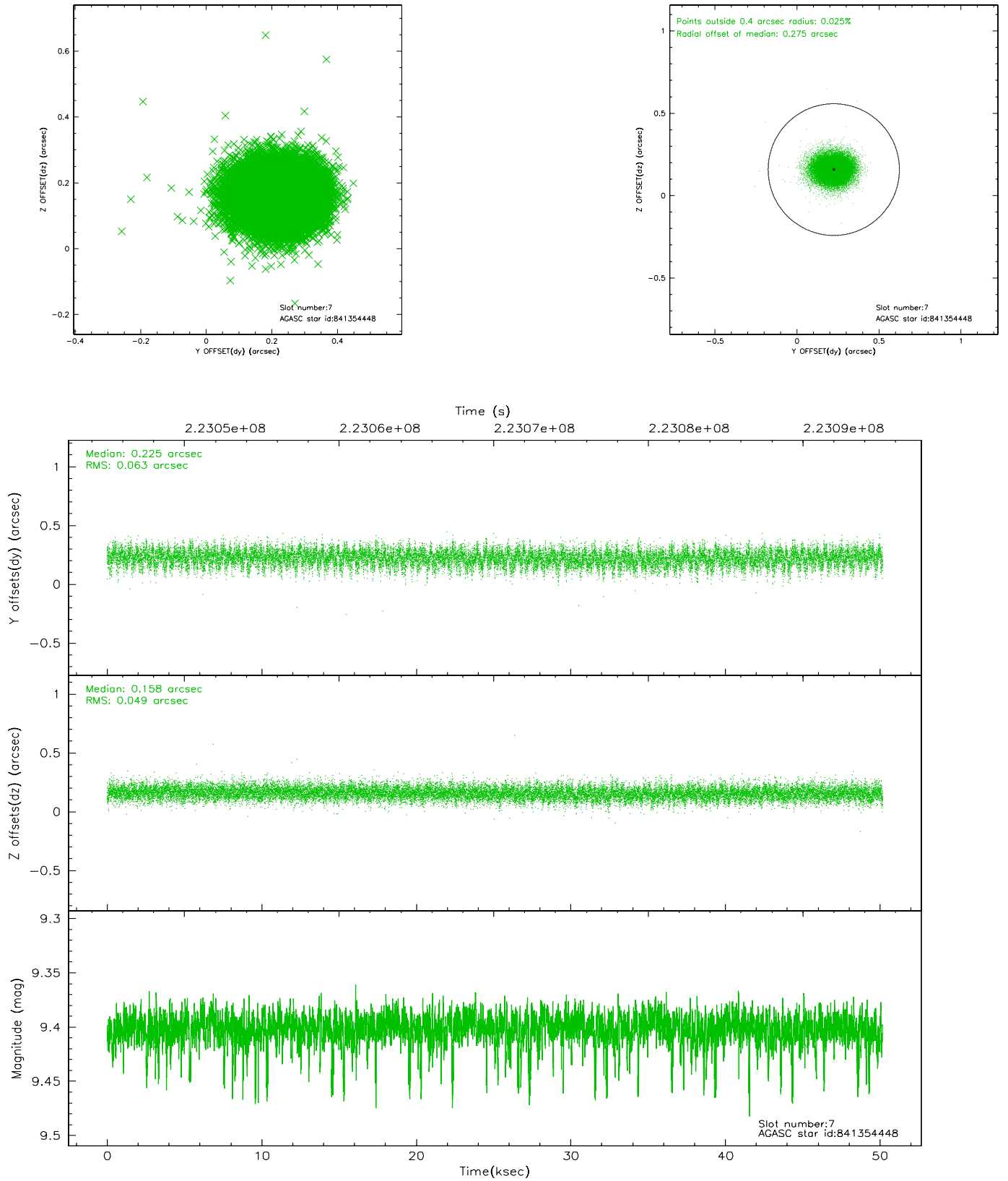
2.4.3 Slot 5



2.4.4 Slot 6

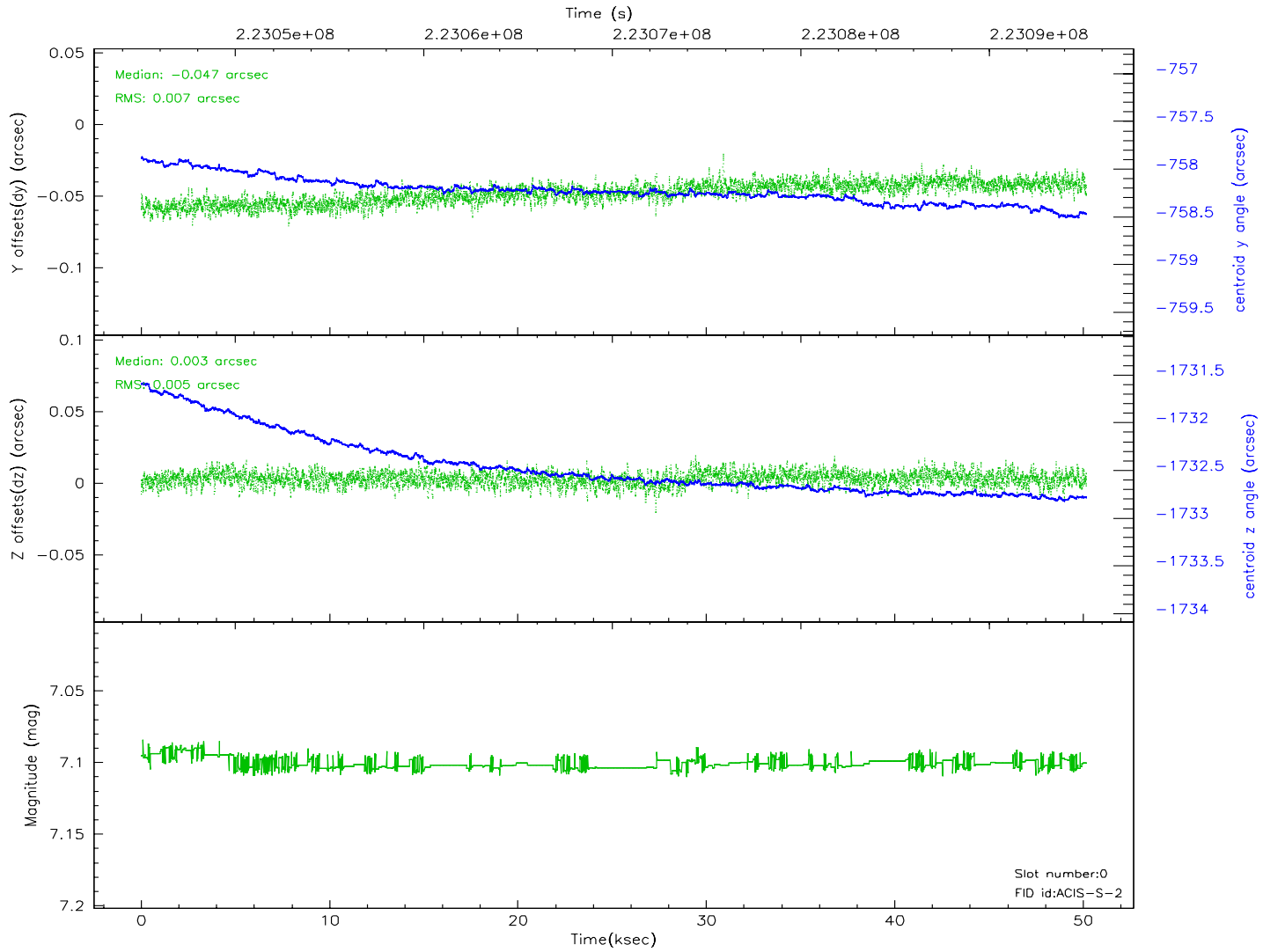
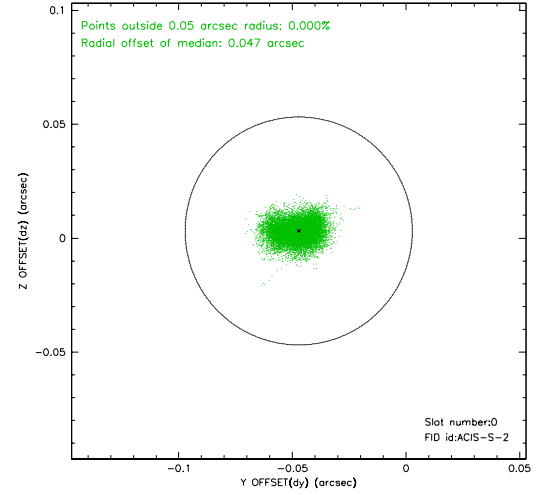
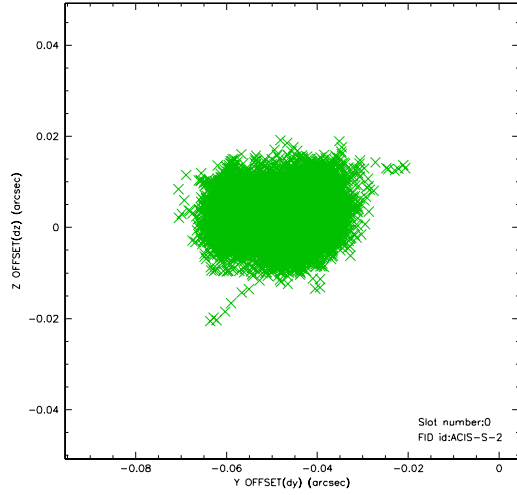


2.4.5 Slot 7

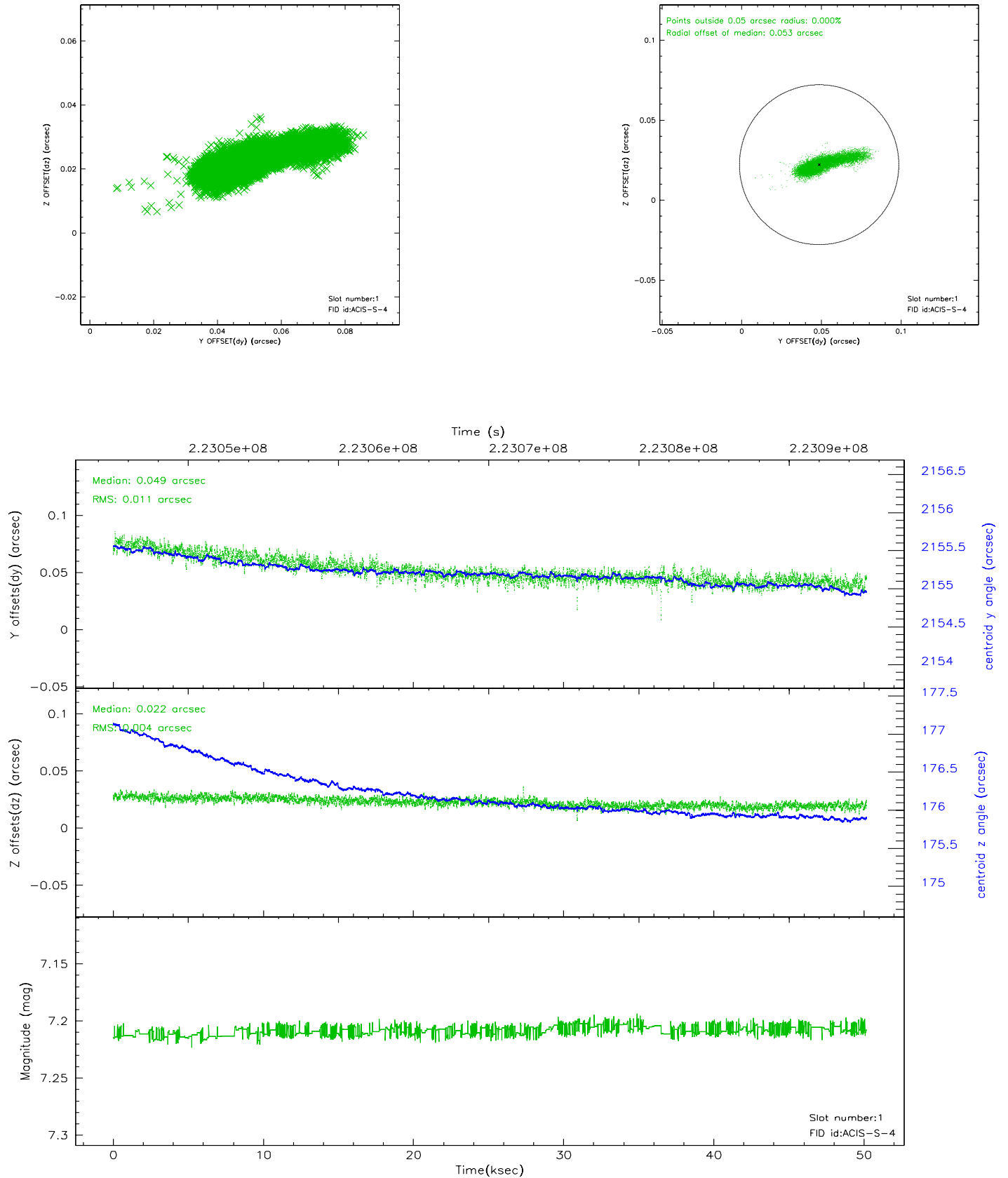


2.5 FID Slots

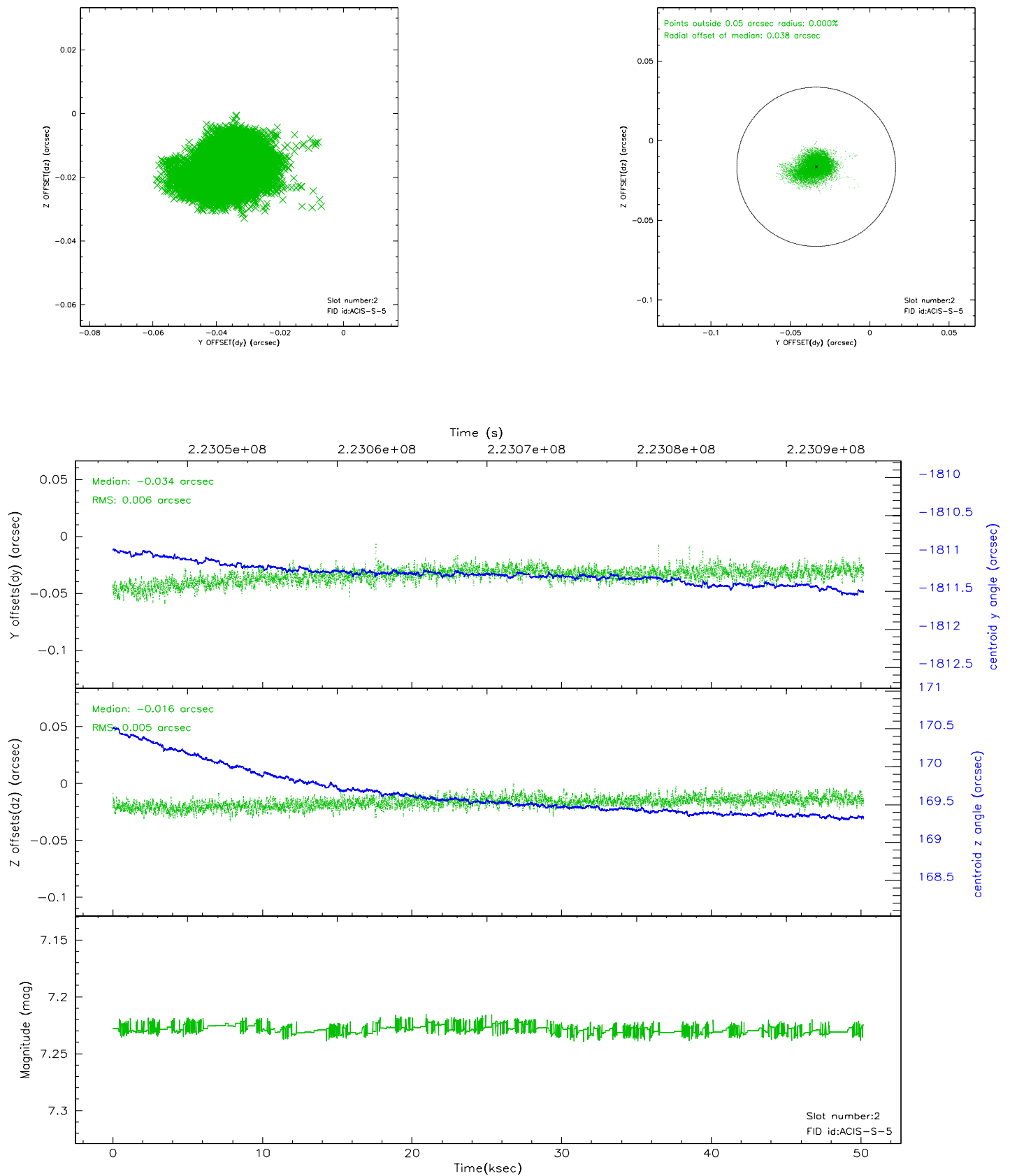
2.5.1 Slot 0



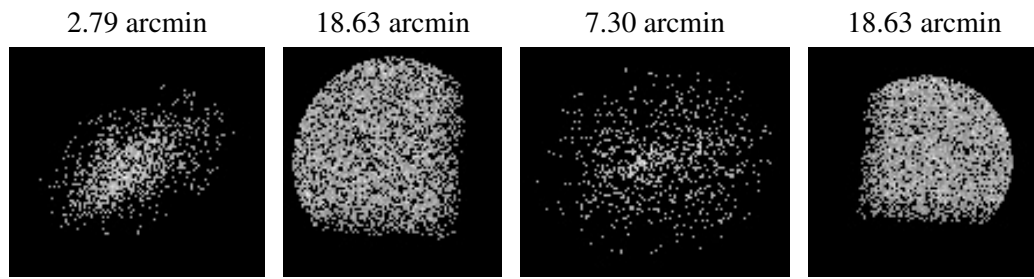
2.5.2 Slot 1



2.5.3 Slot 2



3 Point Sources



A Summary

A.1 Status

| | |
|----------------------------|---------------|
| V&V Scientist | Beth Sundheim |
| V&V Date (YYYY-MM-DD) | 2006.02.21 |
| V&V Edition | 1 |
| V&V Disposition and Status | OK |
| V&V Charge Time | 50.14399 |

A.2 Comments