

V&V Reference Report

L2 ASCDS Version : 7.6.7.1

Observation 5023 - L2 Version 001
Chandra X-Ray Center

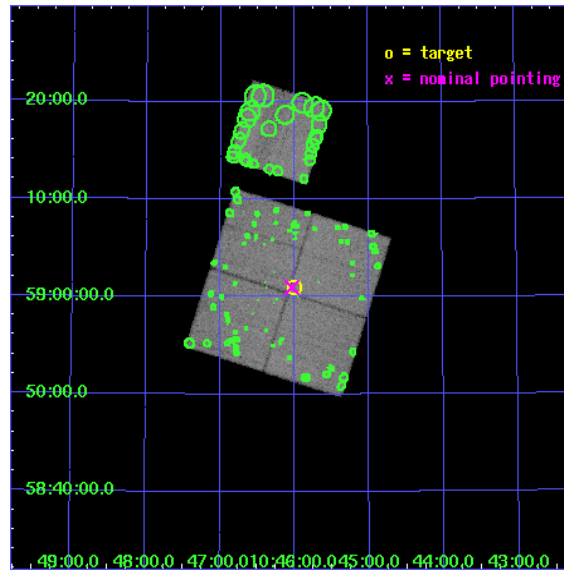
L2 Processing Date : Apr 17 2006

Contents

1	Front	2
2	OBI	3
2.1	OBI	3
2.1.1	Images	3
2.1.2	Bias	3
2.1.3	Parameters	4
2.1.4	Events	4
2.2	Compared Parameters	5
2.3	Aspect	6
2.4	Star Slots	9
2.4.1	Slot 3	9
2.4.2	Slot 4	10
2.4.3	Slot 5	11
2.4.4	Slot 6	12
2.4.5	Slot 7	13
2.5	FID Slots	14
2.5.1	Slot 0	14
2.5.2	Slot 1	15
2.5.3	Slot 2	16
3	Point Sources	17
A	Summary	18
A.1	Status	18
A.2	Comments	18

1 Front

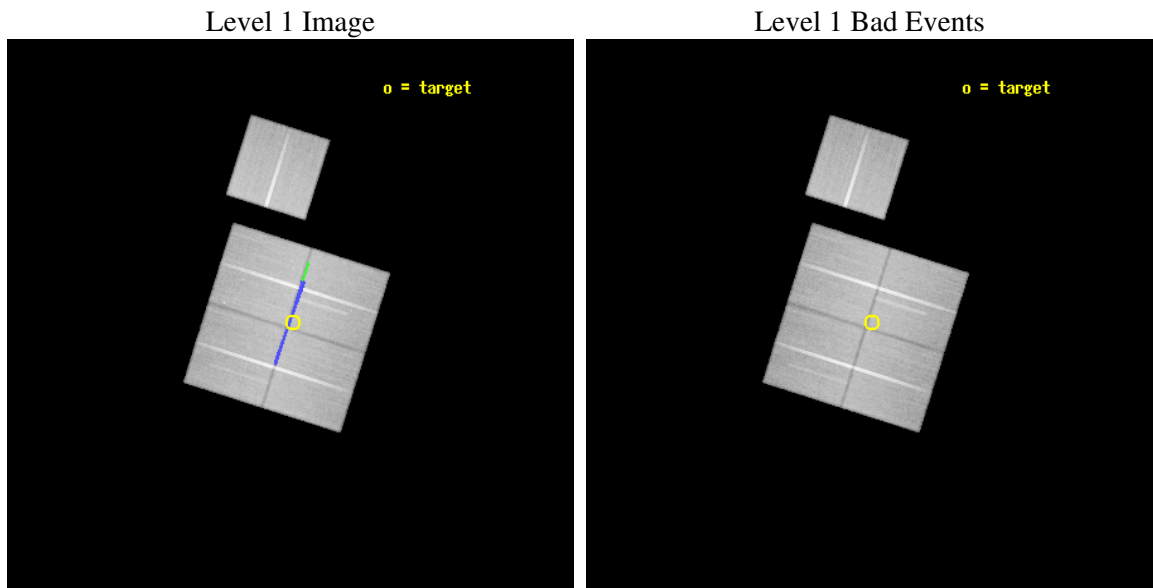
seq_num	900330
obs_id	5023
title	The Balance of Power between Starbursts and AGN: a Chandra/SIRTf Survey.
observer	Dr. BELINDA WILKES
object	SWIRE LOCKMAN 5 (center)
dtcycle	0
cycle	P
ra_targ	161.5
dec_targ	59.016667
ra_nom	161.50895559219
dec_nom	59.016227907546
roll_nom	17.601008091517
revision	2
ontime	68035.495087713
livetime	67146.561257389
ontime0	68048.058898926
ontime1	68038.635938466
ontime2	68041.777127862
ontime3	68035.495087713
ontime6	68048.058898926
l2events	290122



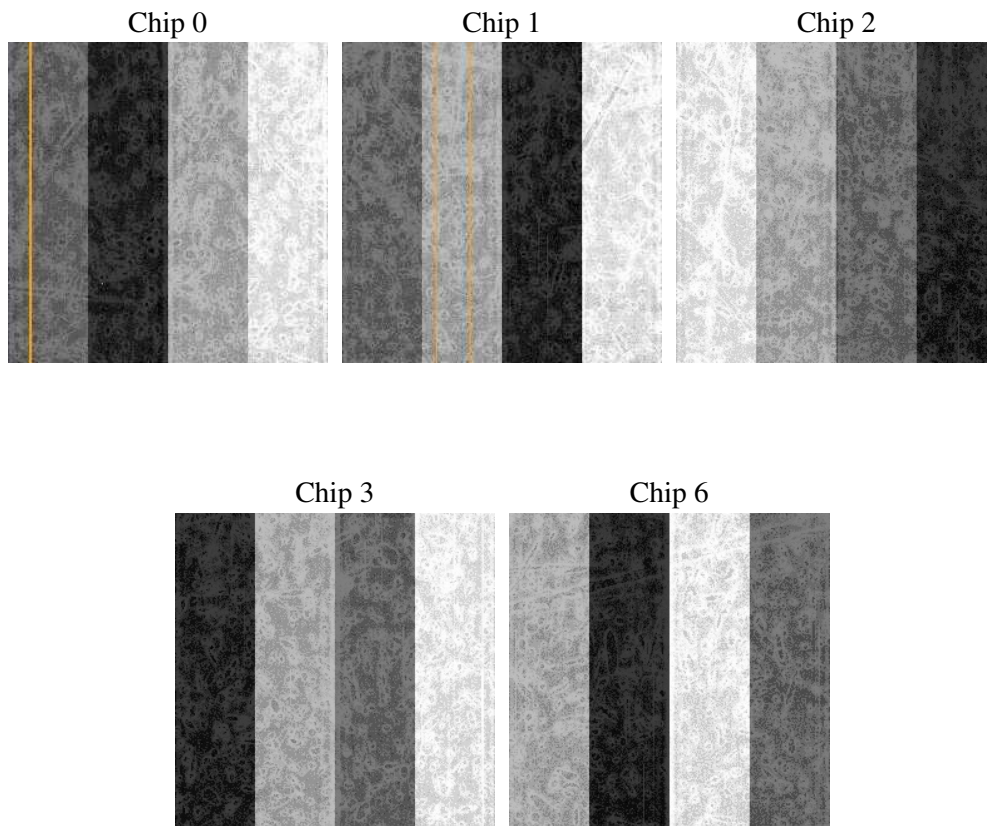
2 OBI

2.1 OBI

2.1.1 Images



2.1.2 Bias



2.1.3 Parameters

obi_num	0
ascdsver	7.6.7.1
caldbver	3.2.1
date	2006-04-17T15:36:15
revision	2

sched_exp_time	68000.000000
ontime	68040.392006606
ontime0	68052.955837697
ontime1	68043.532857358
ontime2	68046.674046755
ontime3	68040.392006606
ontime6	68052.955837697
l1events	2676642

2.1.4 Events

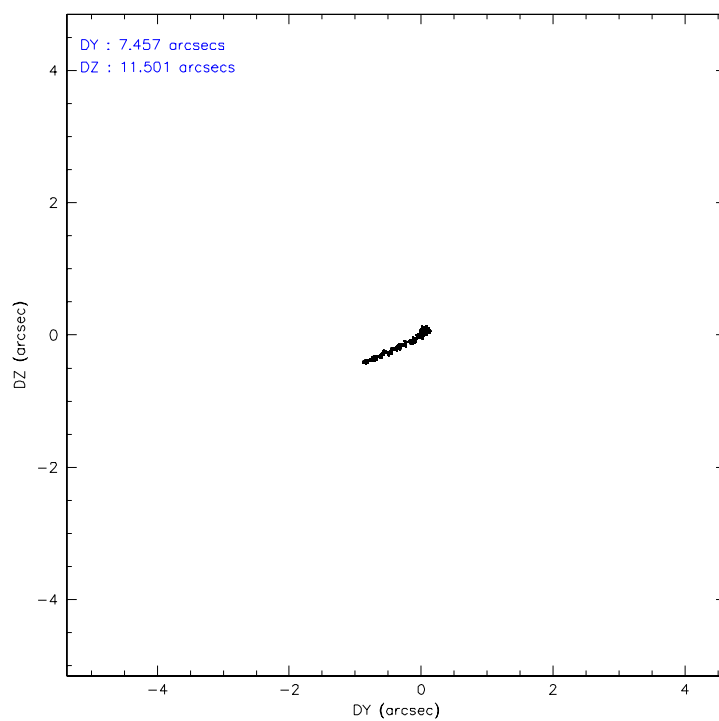
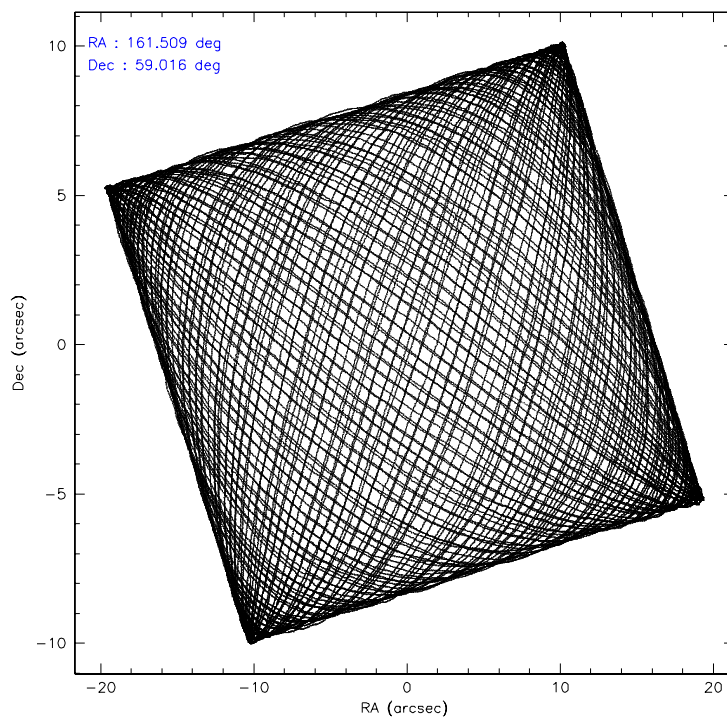
	ccd 0	ccd 1	ccd 2	ccd 3	ccd 6
level 1 events	506027	512643	565131	544892	547949
rejected events	438348	443508	496715	479703	482549
rejected %	86%	86%	87%	88%	88%

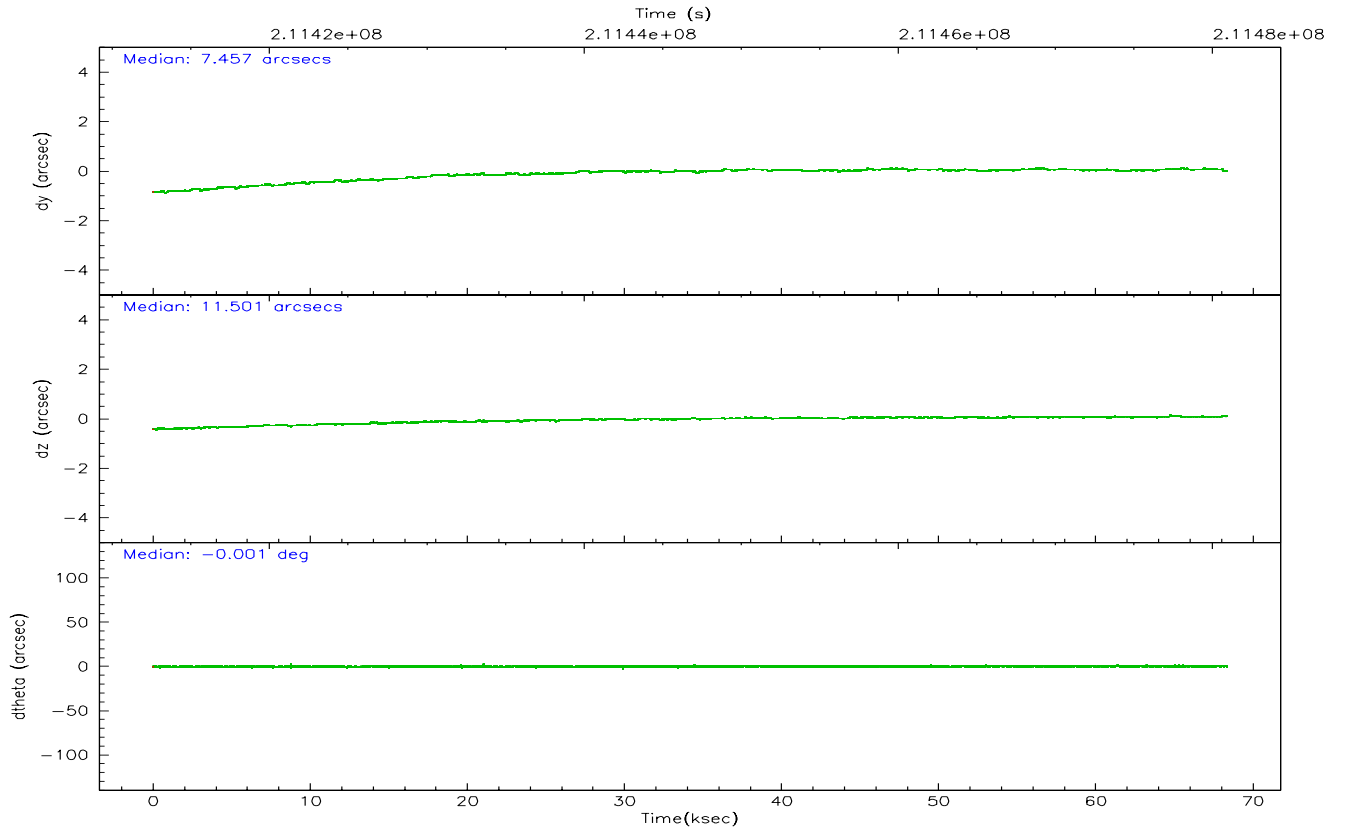
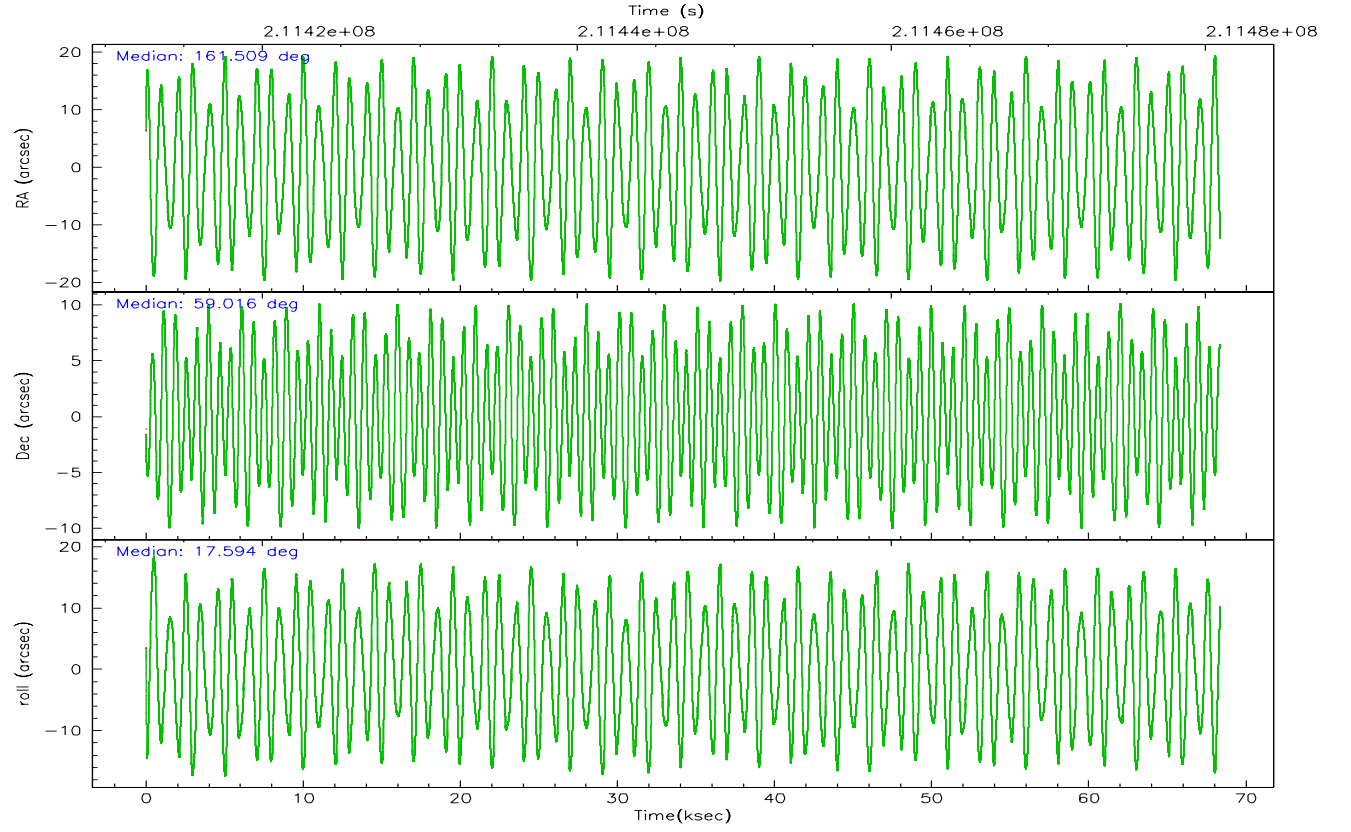
	ccd 0	ccd 1	ccd 2	ccd 3	ccd 6
grade 0 events	28677	26432	30675	28080	25765
	5%	5%	5%	5%	4%
grade 1 events	311	251	353	364	251
	0%	0%	0%	0%	0%
grade 2 events	14708	15570	14212	13223	14215
	2%	3%	2%	2%	2%
grade 3 events	6303	6646	6205	6177	6287
	1%	1%	1%	1%	1%
grade 4 events	6079	6662	6211	6092	6161
	1%	1%	1%	1%	1%
grade 5 events	21731	22513	21257	23854	24312
	4%	4%	3%	4%	4%
grade 6 events	11913	13829	11115	11619	12976
	2%	2%	1%	2%	2%
grade 7 events	416305	420740	475103	455483	457982
	82%	82%	84%	83%	83%

2.2 Compared Parameters

Parameter	Planned	Actual	Parameter	Planned	Actual
Instrument	ACIS	ACIS	Obspar format version number	6	6
Detector	ACIS-01236	ACIS-01236	Obspar file type	PREDICTED	ACTUAL
Grating	NONE	NONE	Obspar update status	NONE	UPDATED
Data mode	VFAINT	VFAINT	On-chip summing requested	N	N
Observation mode	POINTING	POINTING	Subarray requested	NONE	NONE
Pointing RA	161.473276	161.5089555921938	Alternating exposures requested	N	N
Pointing Dec	58.995927	59.01622790754647	Primary exposure time	0.000000	3.1
Pointing Roll	17.422907	17.60100809151739			
Roll angle	19.200000	19.200000			
Roll tolerance	1.800000	1.800000			
Roll constraint allows 180D rotation	Y	Y			
SIM focus pos (mm)	-0.782348	-0.7809083437167272			
SIM defocus (mm)	0	0.001439871863259334			
SIM translation stage pos (mm)	-233.592463	-233.5874344608287			
SIM translation stage offset (mm)	0	-0.005018542100998502			
Observation start time	211412938.184000	211411919.71039			
Observation start date	2004-09-12T21:47:54	2004-09-12T21:31:59			
Observation end time	211480938.184000	211481851.87601			
Observation end date	2004-09-13T16:41:14	2004-09-13T16:57:31			
Read mode	TIMED	TIMED			

2.3 Aspect



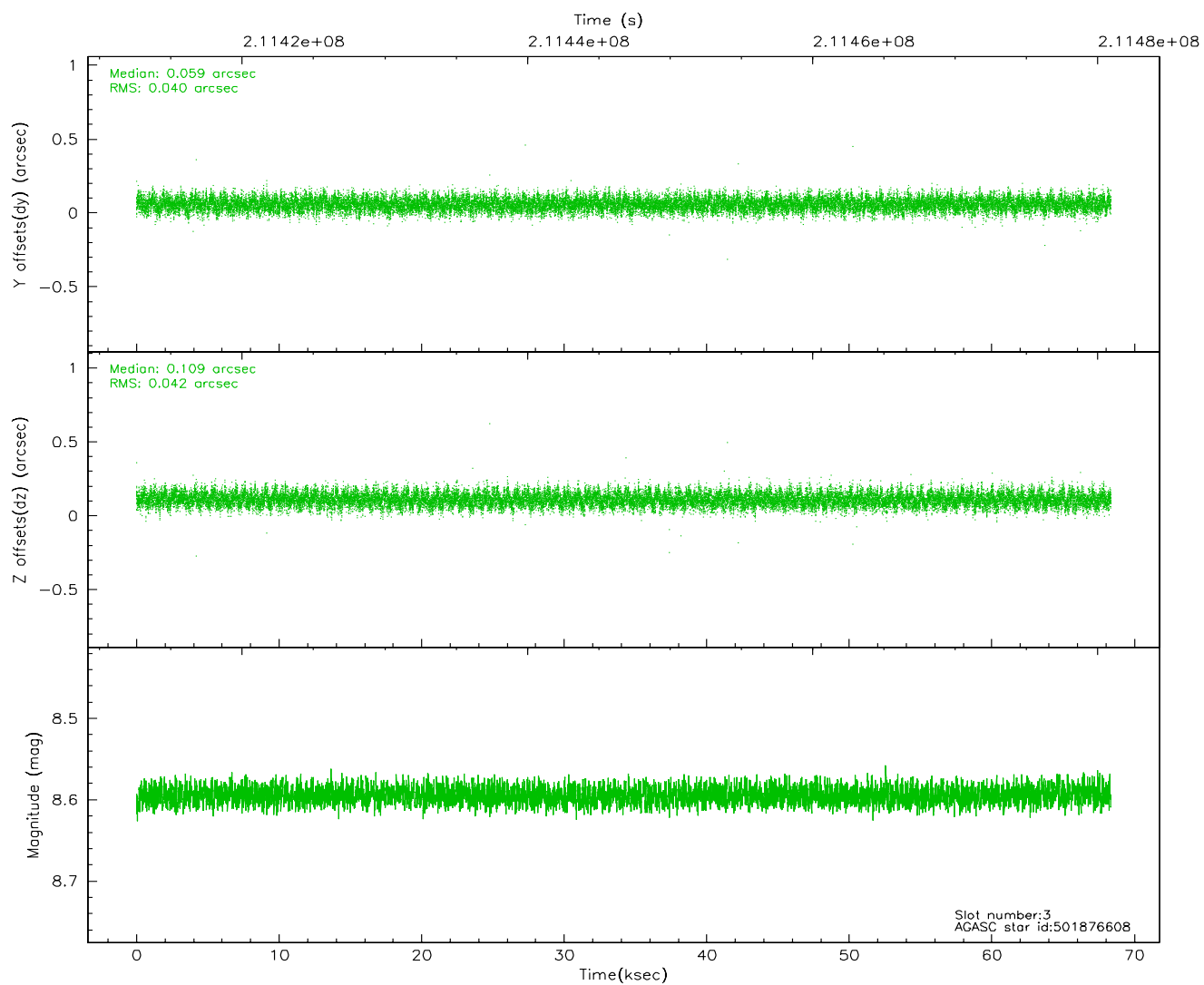
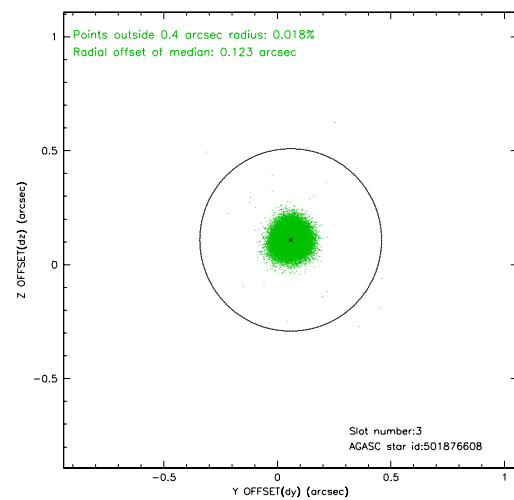
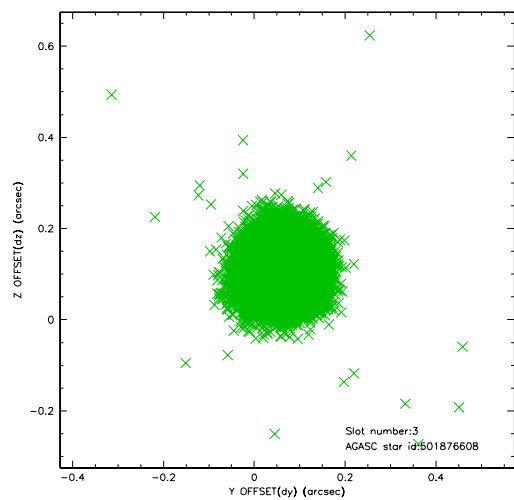


Slot Statistics

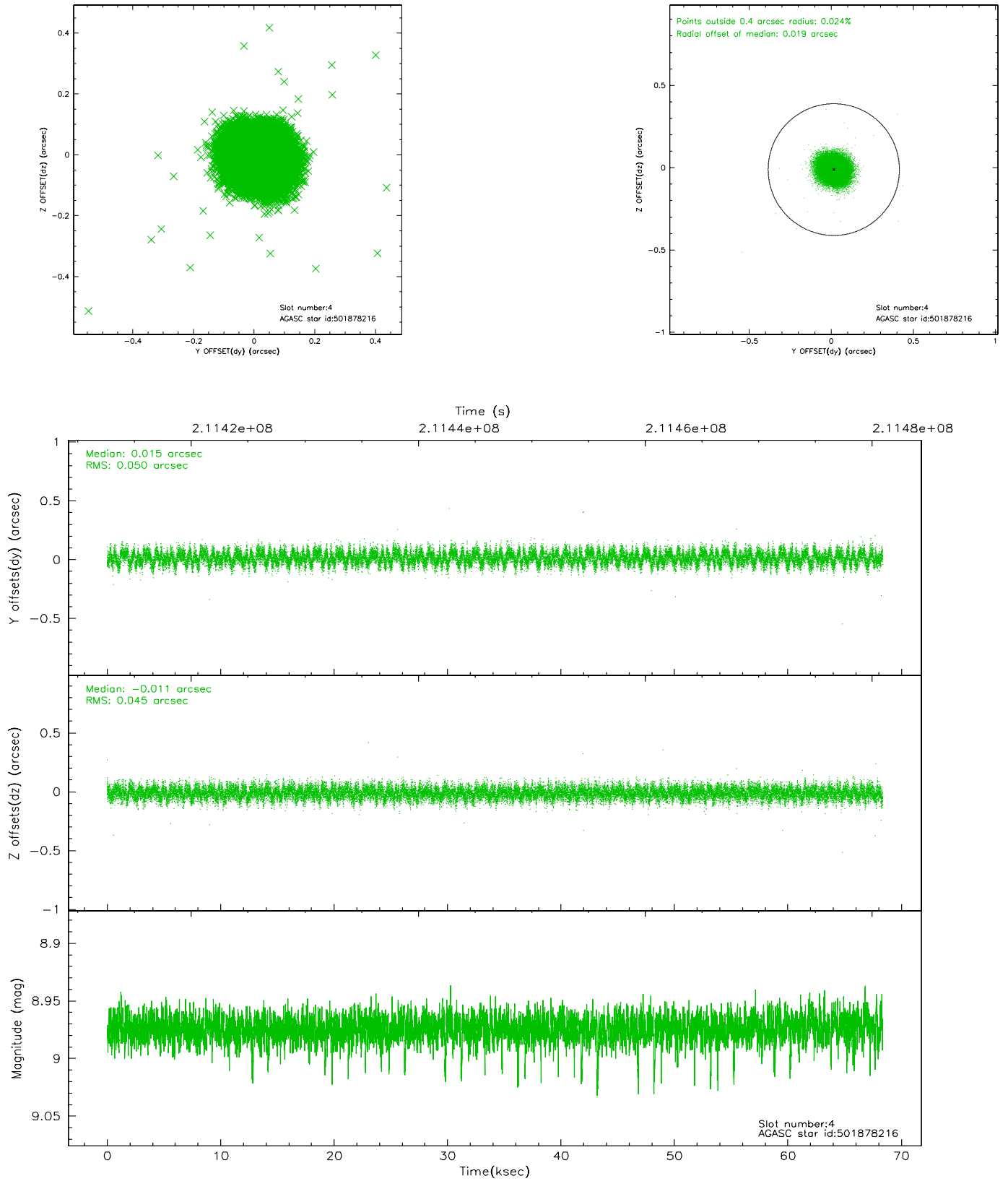
slot	status	id	mag	n_pts	med_dy	med_dz	dr1	dr2	ra	dec	mean_y	mean_z
0	FID	ACIS-I-1	7.24	16676	0.021	0.009	0.008	0.016	0.000000	0.000000	932.34	-834.97
1	FID	ACIS-I-5	7.23	16676	-0.132	0.050	0.009	0.017	0.000000	0.000000	-1815.91	1062.65
2	FID	ACIS-I-6	7.25	16674	0.020	0.012	0.007	0.011	0.000000	0.000000	398.00	1707.01
3	GUIDE	501876608	8.59	33343	0.059	0.109	0.062	0.099	161.204341	58.717464	-779.44	-804.98
4	GUIDE	501878216	8.97	33330	0.015	-0.011	0.072	0.114	161.663048	59.249982	607.35	768.58
5	GUIDE	501878576	7.84	33350	-0.079	-0.080	0.044	0.072	161.532118	59.060873	174.01	190.50
6	GUIDE	501880360	8.30	33346	-0.148	0.004	0.064	0.104	161.850113	59.665463	1375.88	2096.61
7	GUIDE	501882104	8.45	33332	0.159	-0.019	0.070	0.113	160.237120	59.342503	-1785.28	1889.25

2.4 Star Slots

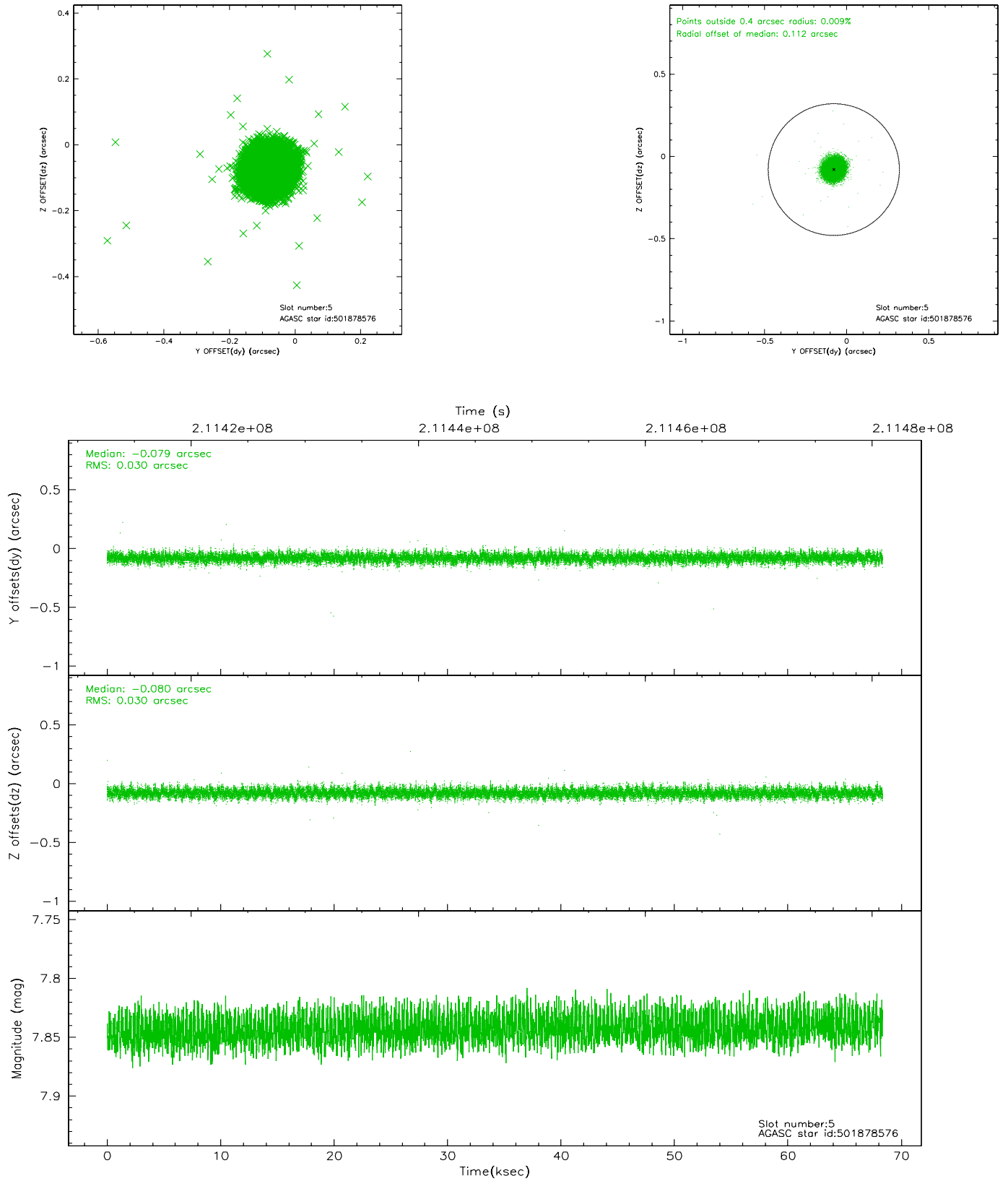
2.4.1 Slot 3



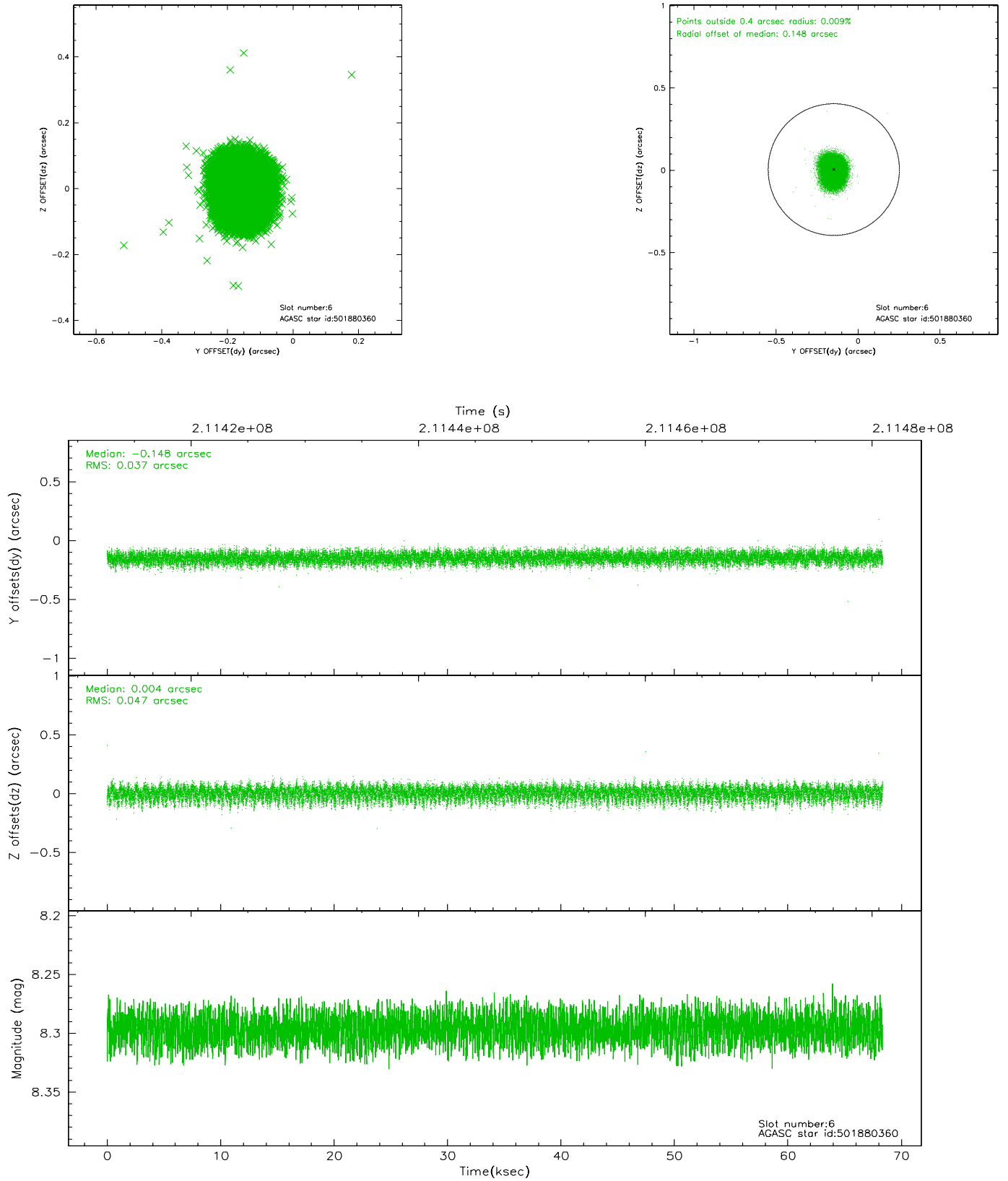
2.4.2 Slot 4



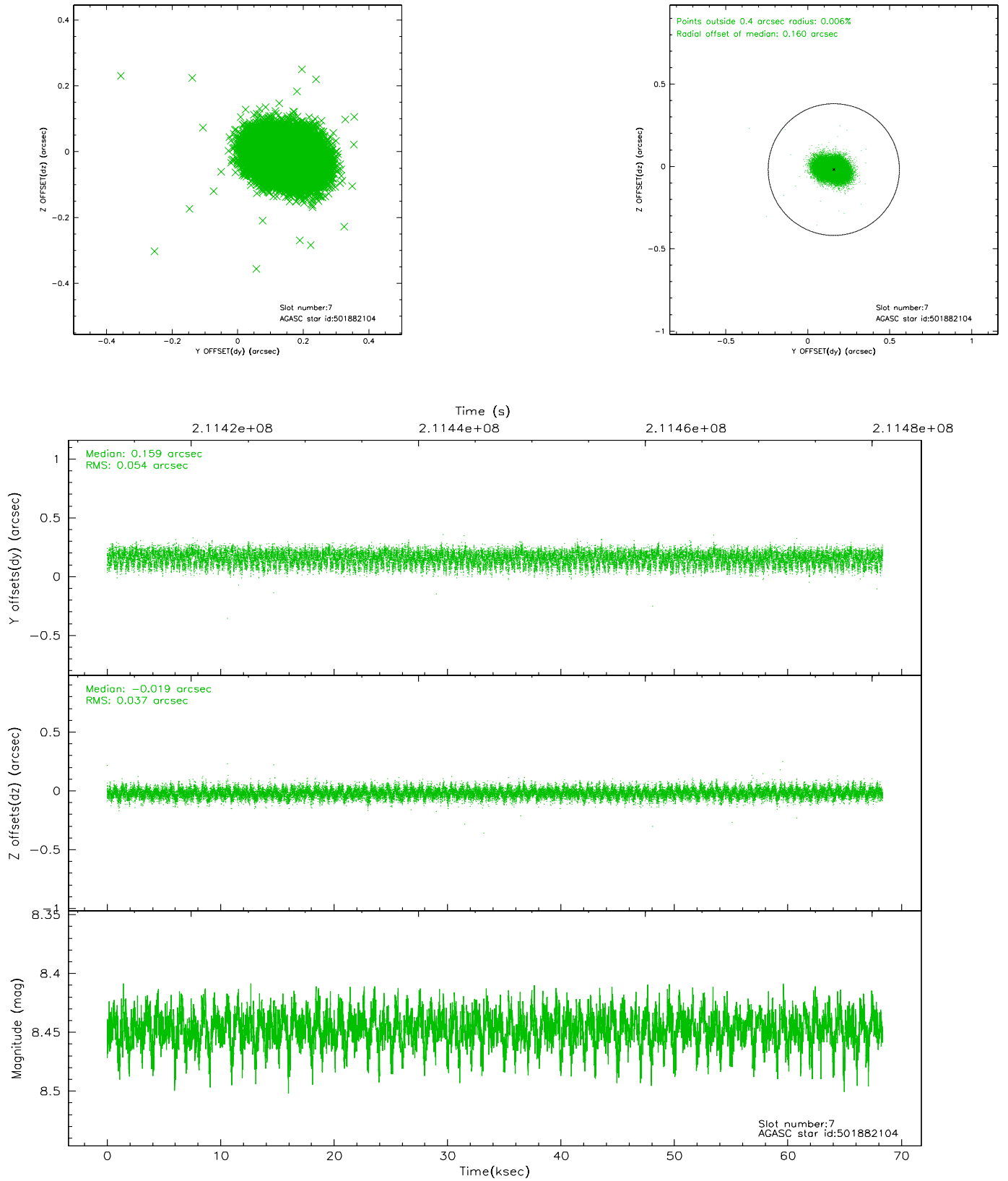
2.4.3 Slot 5



2.4.4 Slot 6

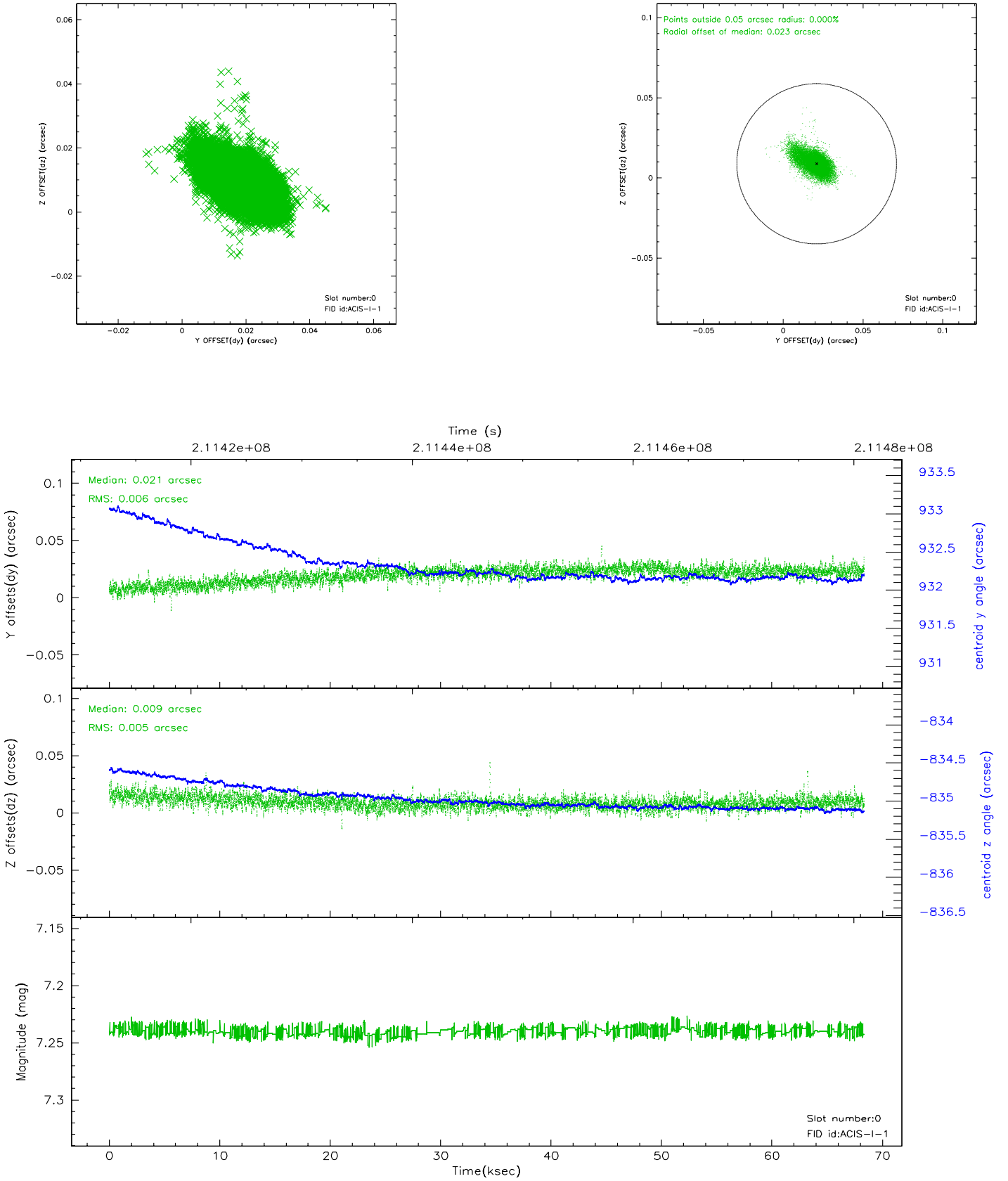


2.4.5 Slot 7

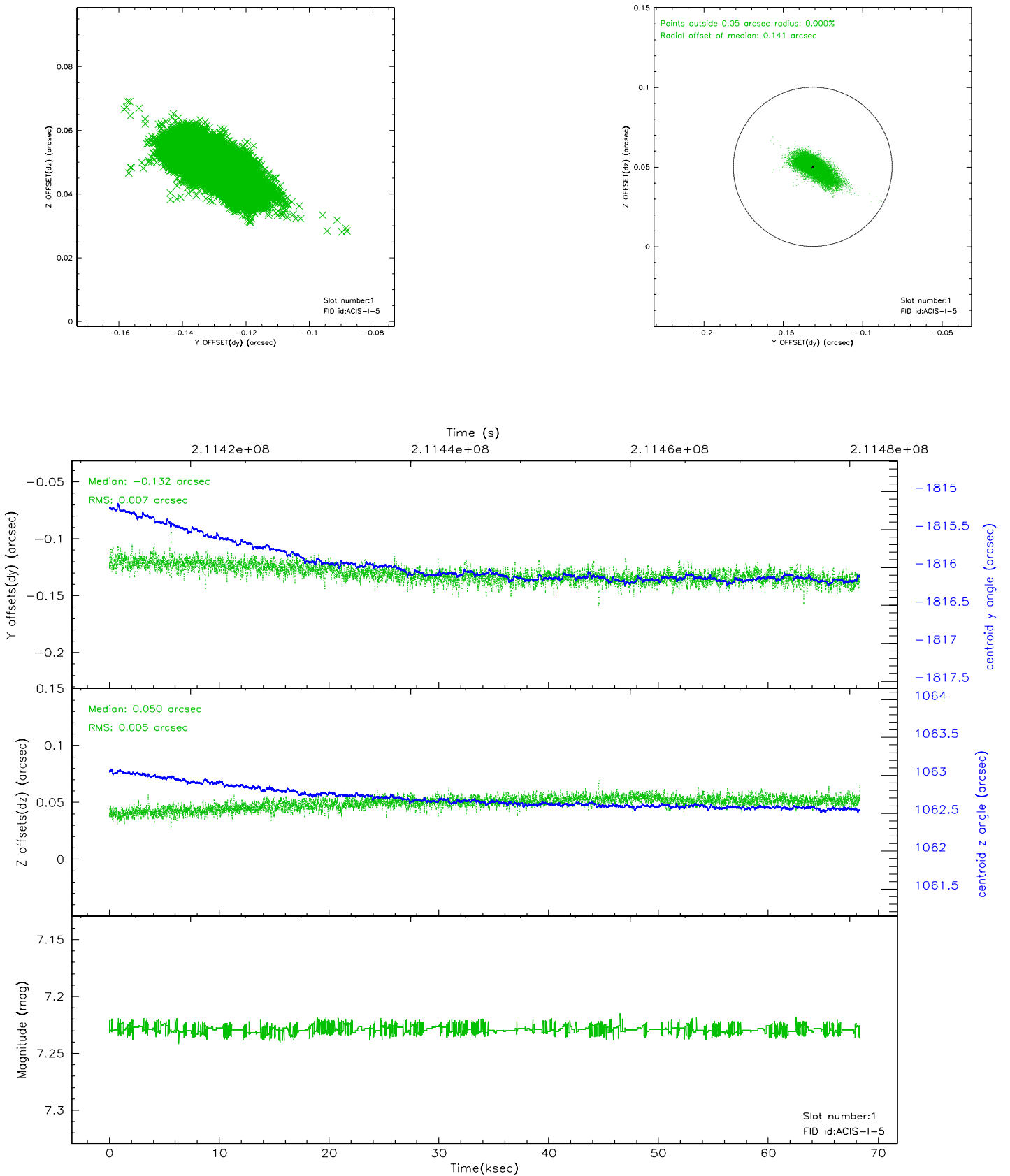


2.5 FID Slots

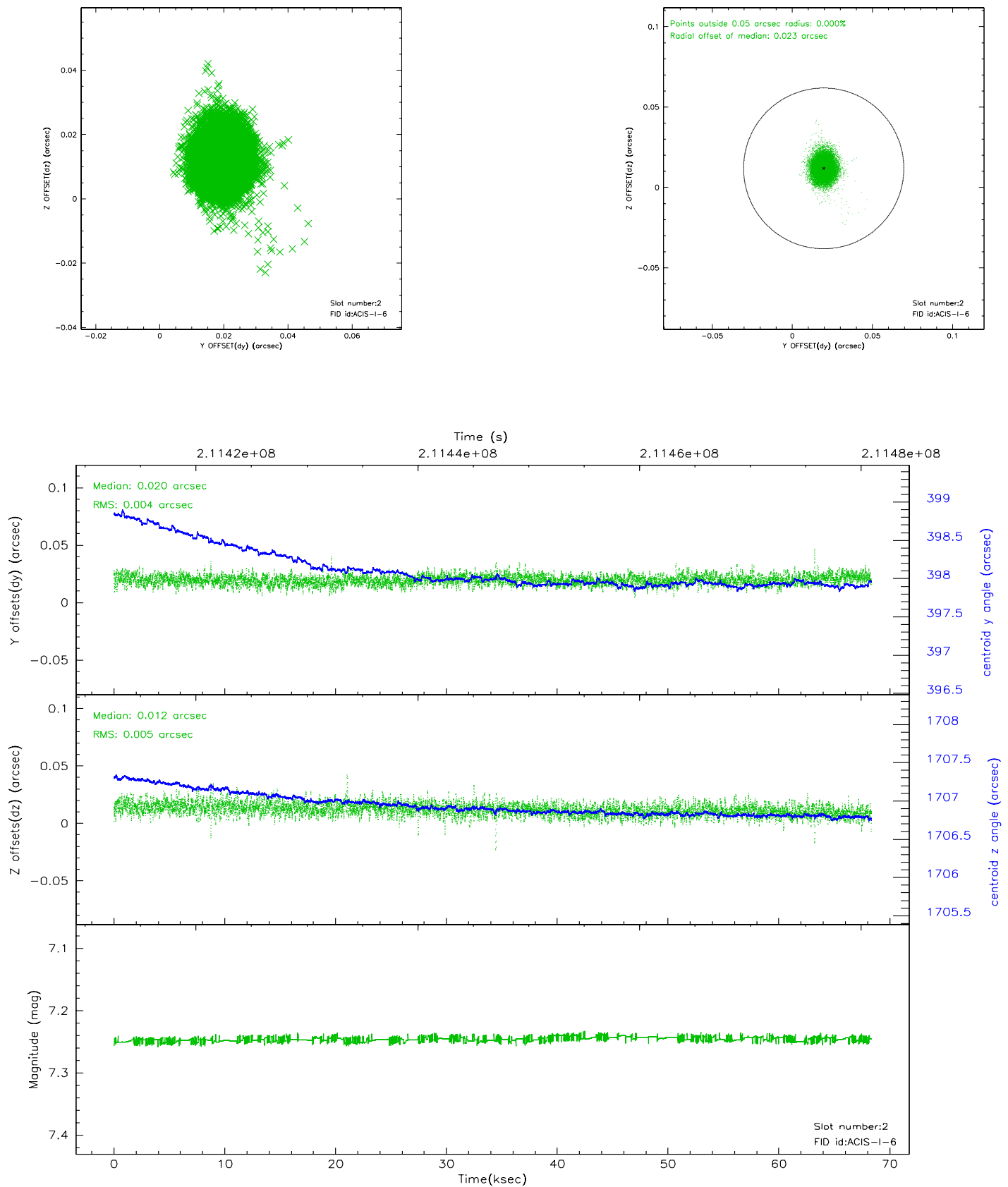
2.5.1 Slot 0



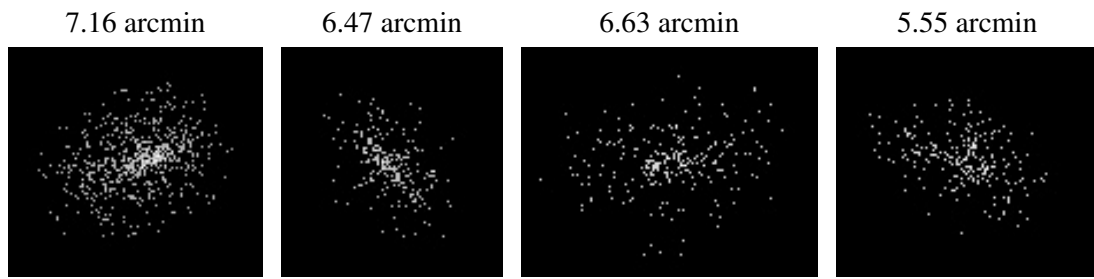
2.5.2 Slot 1



2.5.3 Slot 2



3 Point Sources



A Summary

A.1 Status

V&V Scientist	Beth Sundheim
V&V Date (YYYY-MM-DD)	2006.04.17
V&V Edition	1
V&V Disposition and Status	OK
V&V Charge Time	68.035

A.2 Comments

Roll constraint satisfied.