

V&V Reference Report

L2 ASCDS Version : 8.5

Observation 5022 - L2 Version 3
Chandra X-Ray Center

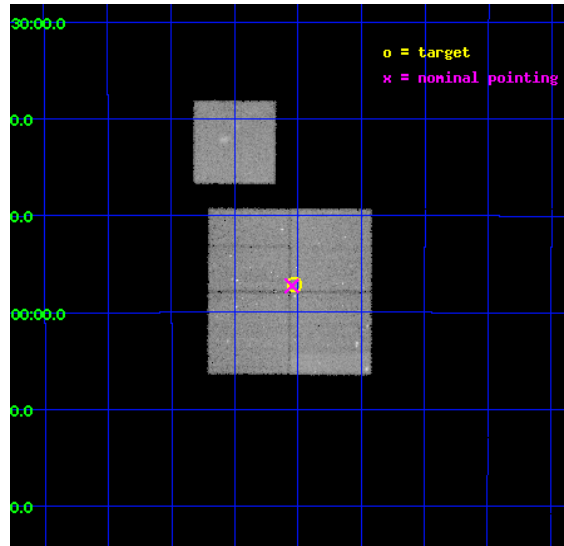
L2 Processing Date : Dec 12 2012

Contents

1	Front	2
2	OBI	3
2.1	OBI	3
2.1.1	Images	3
2.1.2	Bias	3
2.1.3	Parameters	4
2.1.4	Events	4
2.2	Compared Parameters	5
2.3	Aspect	6
2.4	Star Slots	9
2.4.1	Slot 3	9
2.4.2	Slot 4	10
2.4.3	Slot 5	11
2.4.4	Slot 6	12
2.4.5	Slot 7	13
2.5	FID Slots	14
2.5.1	Slot 0	14
2.5.2	Slot 1	15
2.5.3	Slot 2	16
A	Summary	17
A.1	Status	17
A.2	Comments	17

1 Front

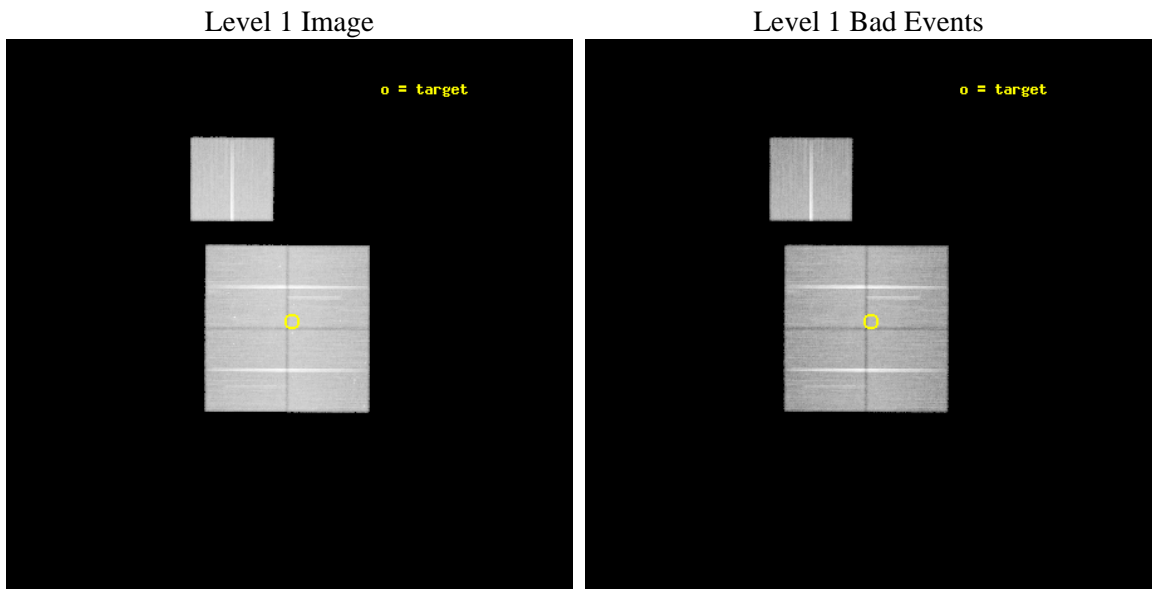
seq_num	900329	Sequence number
obs_id	5022	Observation id
title	The Extended Chandra Deep Field-South Survey: A Public Chandra Legacy	Proposal title
observer	Prof. William Brandt	Principal investigator
object	Extended CDF-S #4	Source name
dtcycle	0	
cycle	P	events from which exps? Prim/Second/Both
ra_targ	53.2574	Observer's specified target RA [deg]
dec_targ	-27.95267	Observer's specified target Dec [deg]
ra_nom	53.26226319507	Nominal RA [deg]
dec_nom	-27.954462950321	Nominal Dec [deg]
roll_nom	0.21096201962556	Nominal Roll [deg]
revision	3	Processing version of data
ontime	80175.217945039	Sum of GTIs [s]
livetime	79127.669698451	Livetime [s]
ontime0	80172.076905072	Sum of GTIs [s]
ontime1	80165.794884861	Sum of GTIs [s]
ontime2	80175.217865437	Sum of GTIs [s]
ontime3	80175.217945039	Sum of GTIs [s]
ontime6	80165.794924647	Sum of GTIs [s]
l2events	205954	Number of level 2 events



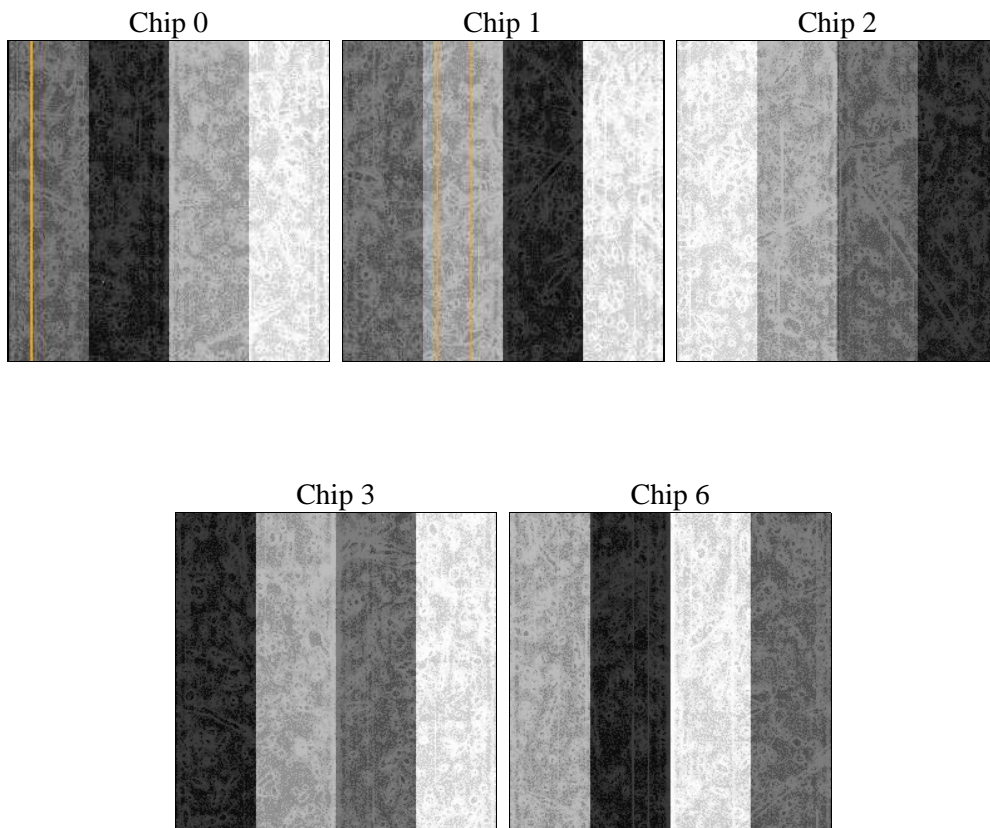
2 OBI

2.1 OBI

2.1.1 Images



2.1.2 Bias



2.1.3 Parameters

obi_num	2	Obi number	sched_exp_time	80000.000000	[s] Scheduled observation exposure time
ascdsver	8.5	Processing system revision	ontime	80175.217945039	Sum of GTIs [s]
caldbver	4.5.4	 	ontime0	80172.076905072	Sum of GTIs [s]
date	2012-12-12T03:28:43	Date and time of file creation	ontime1	80165.794884861	Sum of GTIs [s]
revision	3	Processing version of data	ontime2	80175.217865437	Sum of GTIs [s]
			ontime3	80175.217945039	Sum of GTIs [s]
			ontime6	80165.794924647	Sum of GTIs [s]
			l1events	2384492	Number of level 1 events

2.1.4 Events

	ccd 0	ccd 1	ccd 2	ccd 3	ccd 6
level 1 events	449875	461625	506820	482147	484025
rejected events	401079	406171	457206	436541	433177
rejected %	89%	87%	90%	90%	89%

	ccd 0	ccd 1	ccd 2	ccd 3	ccd 6
grade 0 events	16867	20641	18336	16159	17981
	3%	4%	3%	3%	3%
grade 1 events	217	195	280	246	237
	0%	0%	0%	0%	0%
grade 2 events	11642	11905	11683	9844	11063
	2%	2%	2%	2%	2%
grade 3 events	5607	6123	5381	5380	5502
	1%	1%	1%	1%	1%
grade 4 events	5142	5887	5488	5307	5647
	1%	1%	1%	1%	1%
grade 5 events	17079	18331	15999	19189	18870
	3%	3%	3%	3%	3%
grade 6 events	9672	11064	8873	9044	10809
	2%	2%	1%	1%	2%
grade 7 events	383649	387479	440780	416978	413916
	85%	83%	86%	86%	85%

2.2 Compared Parameters

Parameter	Planned	Actual
Instrument	ACIS	ACIS
Detector	ACIS-01236	ACIS-01236
Grating	NONE	NONE
Data mode	VFAINT	VFAINT
Observation mode	POINTING	POINTING
[deg] Pointing RA	53.235516	53.26226319507039
[deg] Pointing Dec	-27.968328	-27.95446295032146
[deg] Pointing Roll	359.989737	0.2109620196255584
[deg] Roll angle	0.000000	0.000000
[deg] Roll tolerance	2.000000	2.000000
Roll constraint allows 180D rotation	N	N
[mm] SIM focus pos	-0.782348	-0.7809083437167272
[mm] SIM defocus	0	0.001439871863259334
[mm] SIM translation stage pos	-233.592463	-233.5874344608287
[mm] SIM translation stage offset	0	-0.005018542100998502
[s] Observation start time (MET)	216868241.184000	216867129.8545
Observation start date	2004-11-15T01:09:37	2004-11-15T00:52:09
[s] Observation end time (MET)	216948241.184000	216948375.97064
Observation end date	2004-11-15T23:22:57	2004-11-15T23:26:15
Read mode	TIMED	TIMED

Parameter	Planned	Actual
Obspar format version number	7	7
Obspar file type	PREDICTED	ACTUAL
Obspar update status	NONE	UPDATED
Number of optional ACIS chips dropped	0	0
On-chip summing requested	N	N
Subarray requested	NONE	NONE
Alternating exposures requested	N	N
[s] Primary exposure time	0.000000	3.1

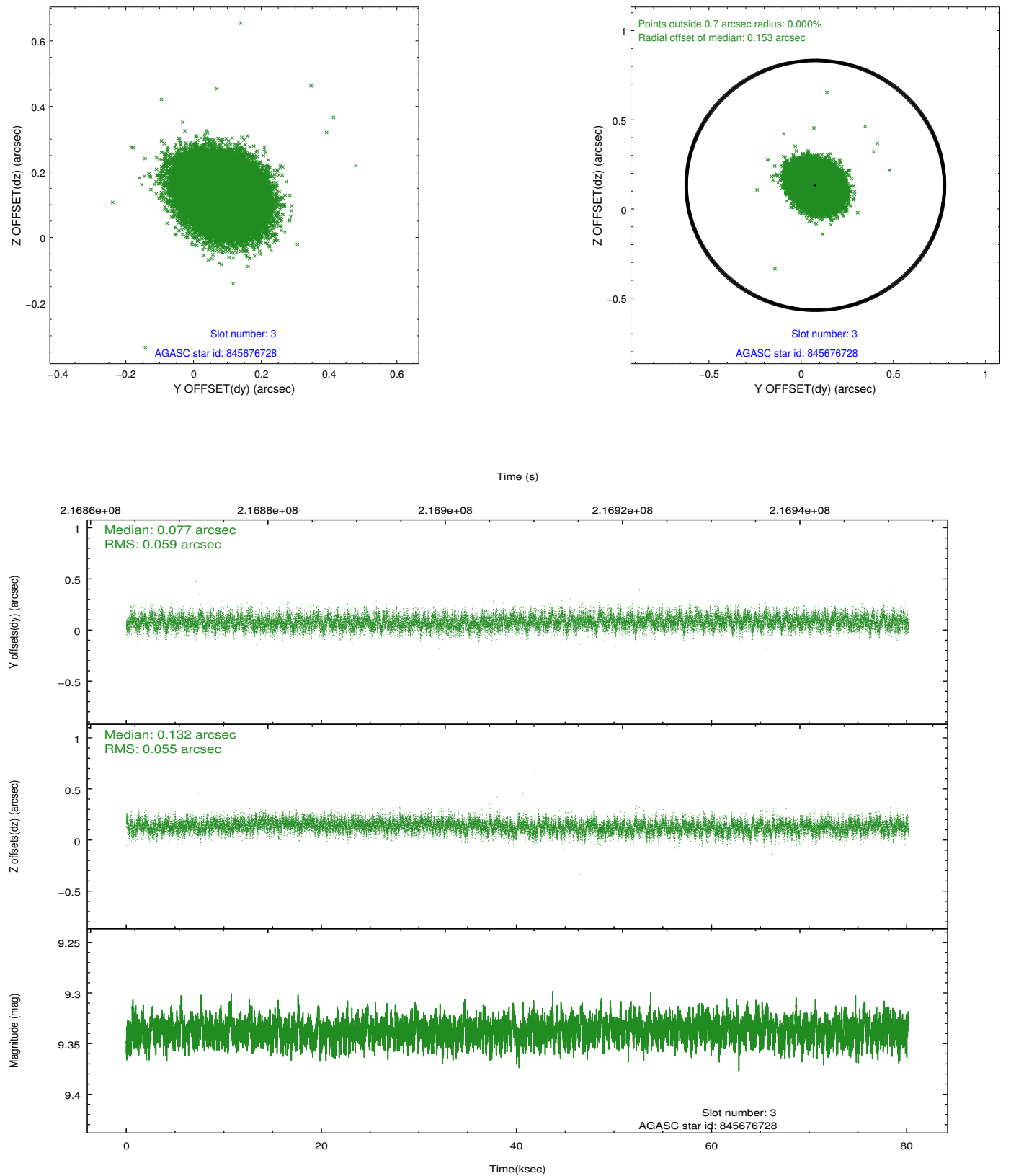
2.3 Aspect

Slot Statistics

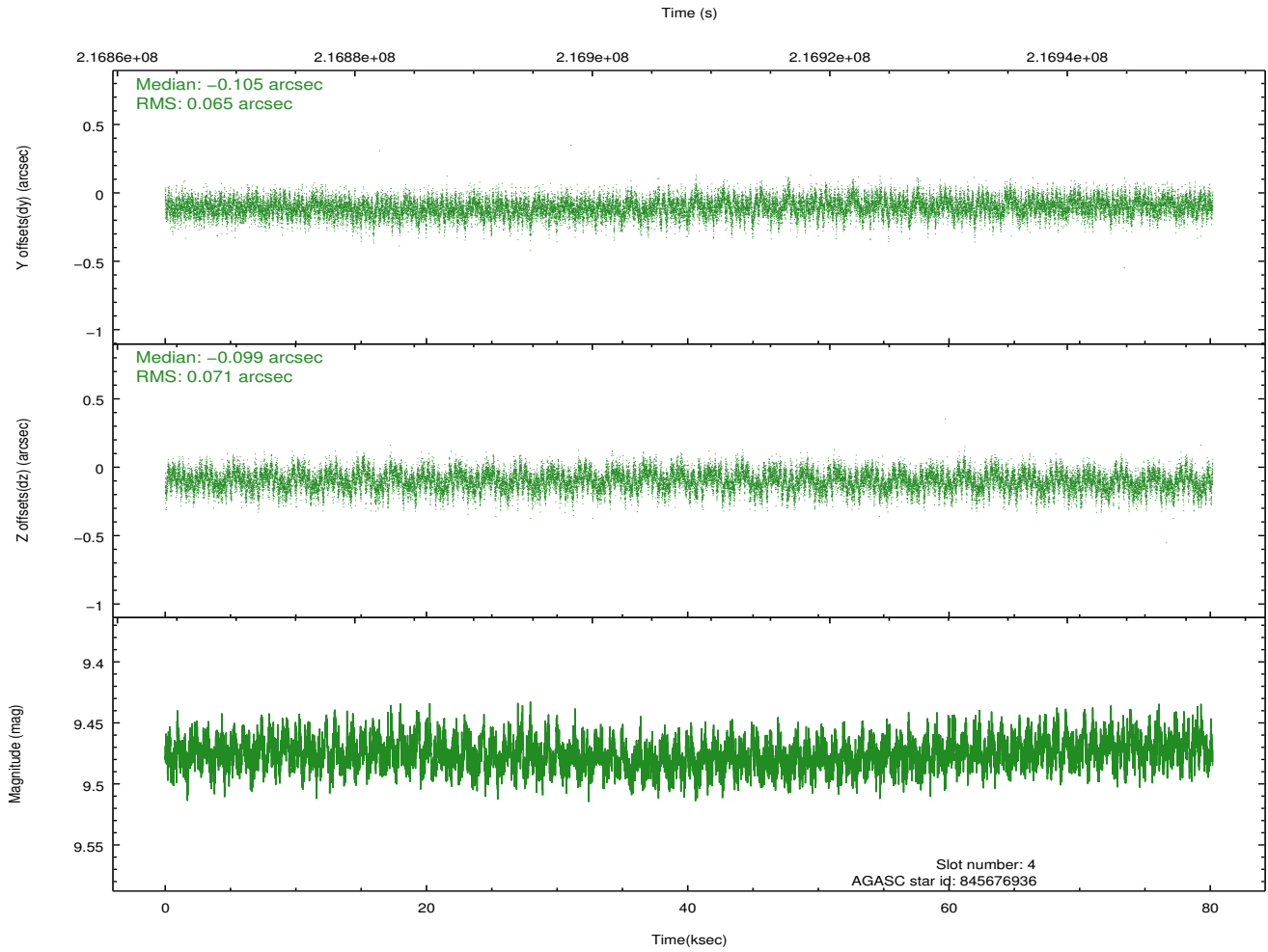
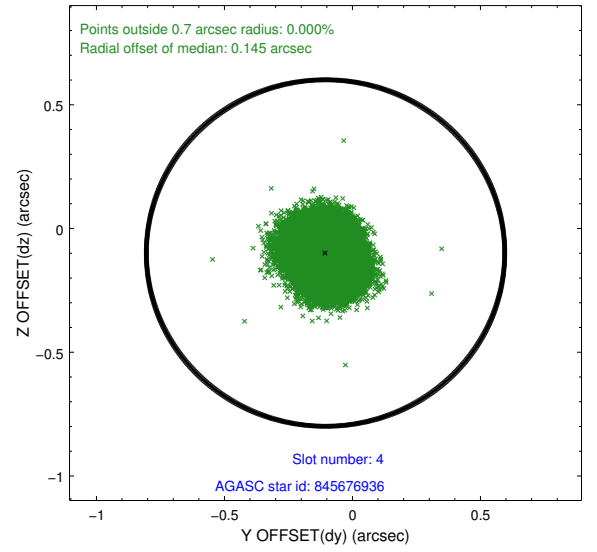
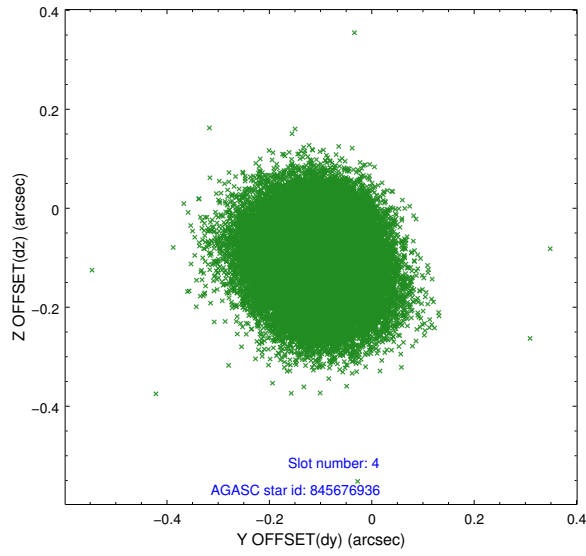
slot	status	id	mag	n_pts	med_dy	med_dz	dr1	dr2	ra	dec	mean_y	mean_z
0	FID	ACIS-I-1	7.24	19559	0.036	-0.000	0.012	0.020	0.000000	0.000000	933.80	-832.81
1	FID	ACIS-I-5	7.23	19557	-0.055	0.089	0.017	0.034	0.000000	0.000000	-1814.52	1064.68
2	FID	ACIS-I-6	7.24	19557	-0.071	-0.018	0.013	0.021	0.000000	0.000000	399.21	1709.09
3	GUIDE	845676728	9.34	39089	0.077	0.132	0.086	0.138	52.877179	-27.664318	-1142.47	1092.75
4	GUIDE	845676936	9.48	39091	-0.105	-0.099	0.103	0.165	52.843773	-27.880153	-1246.25	315.23
5	GUIDE	845807880	8.80	39099	-0.011	-0.102	0.078	0.125	53.382027	-27.886093	466.44	296.07
6	GUIDE	845814592	9.04	39087	0.056	0.011	0.094	0.150	53.853010	-28.336603	1958.18	-1330.52
7	GUIDE	845816224	10.20	39057	-0.015	0.063	0.142	0.229	53.578992	-28.631005	1086.63	-2386.56

2.4 Star Slots

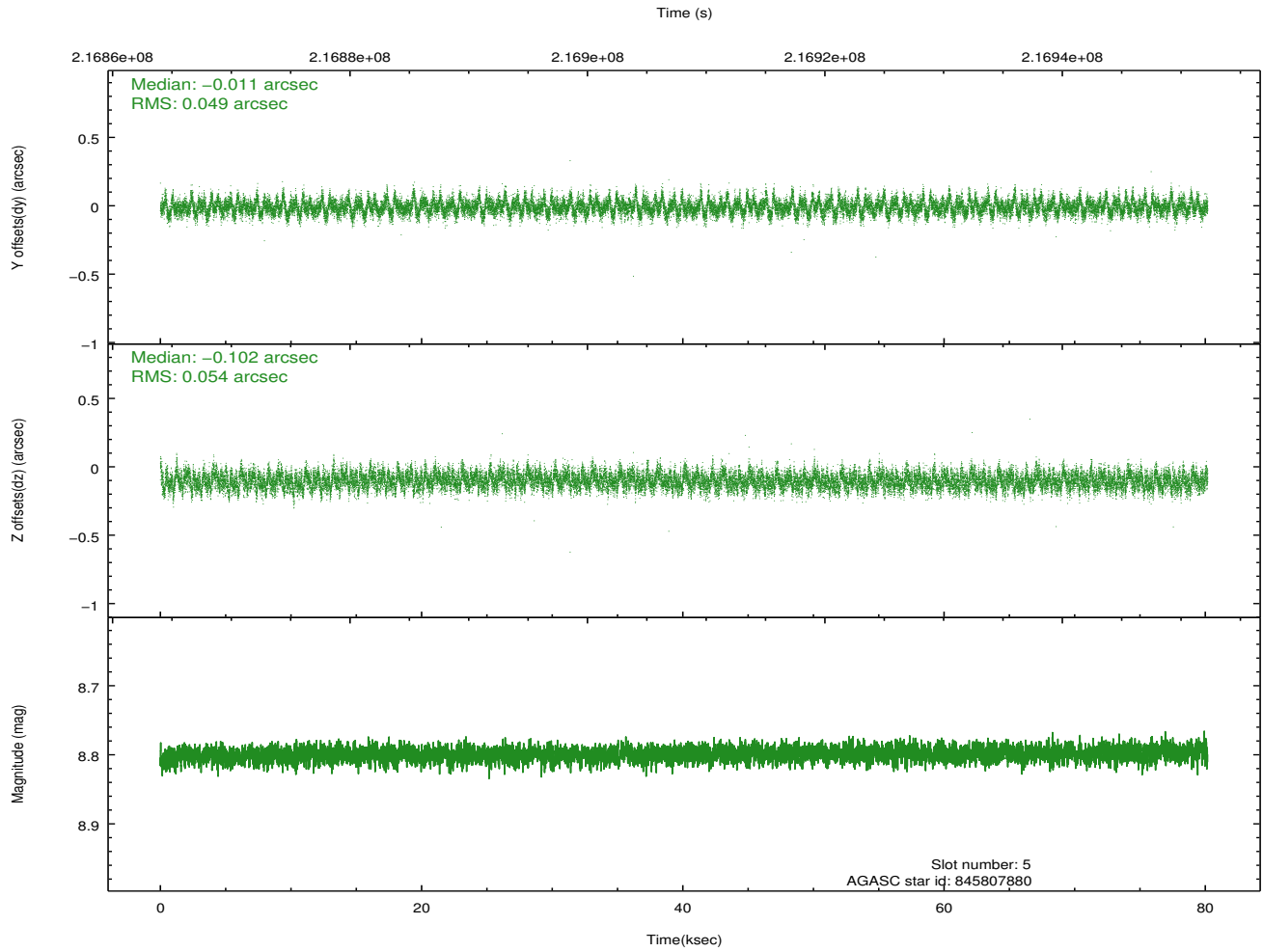
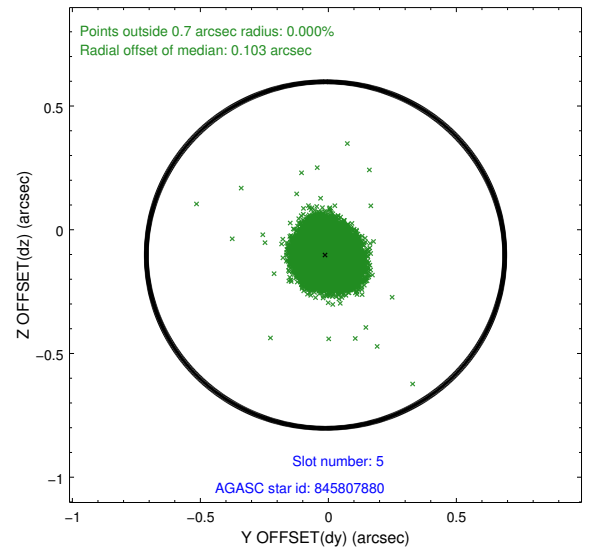
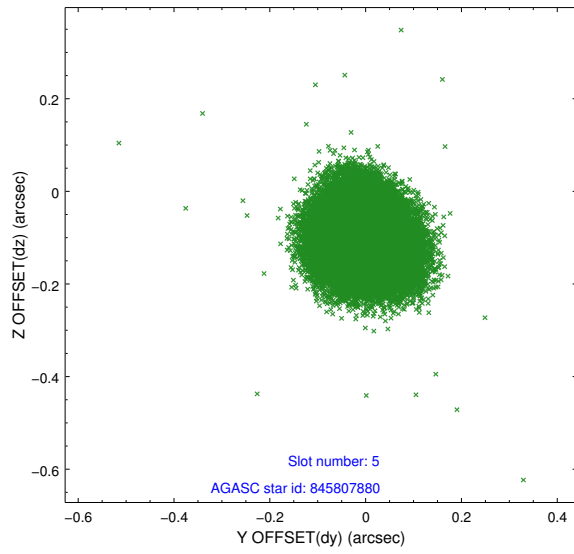
2.4.1 Slot 3



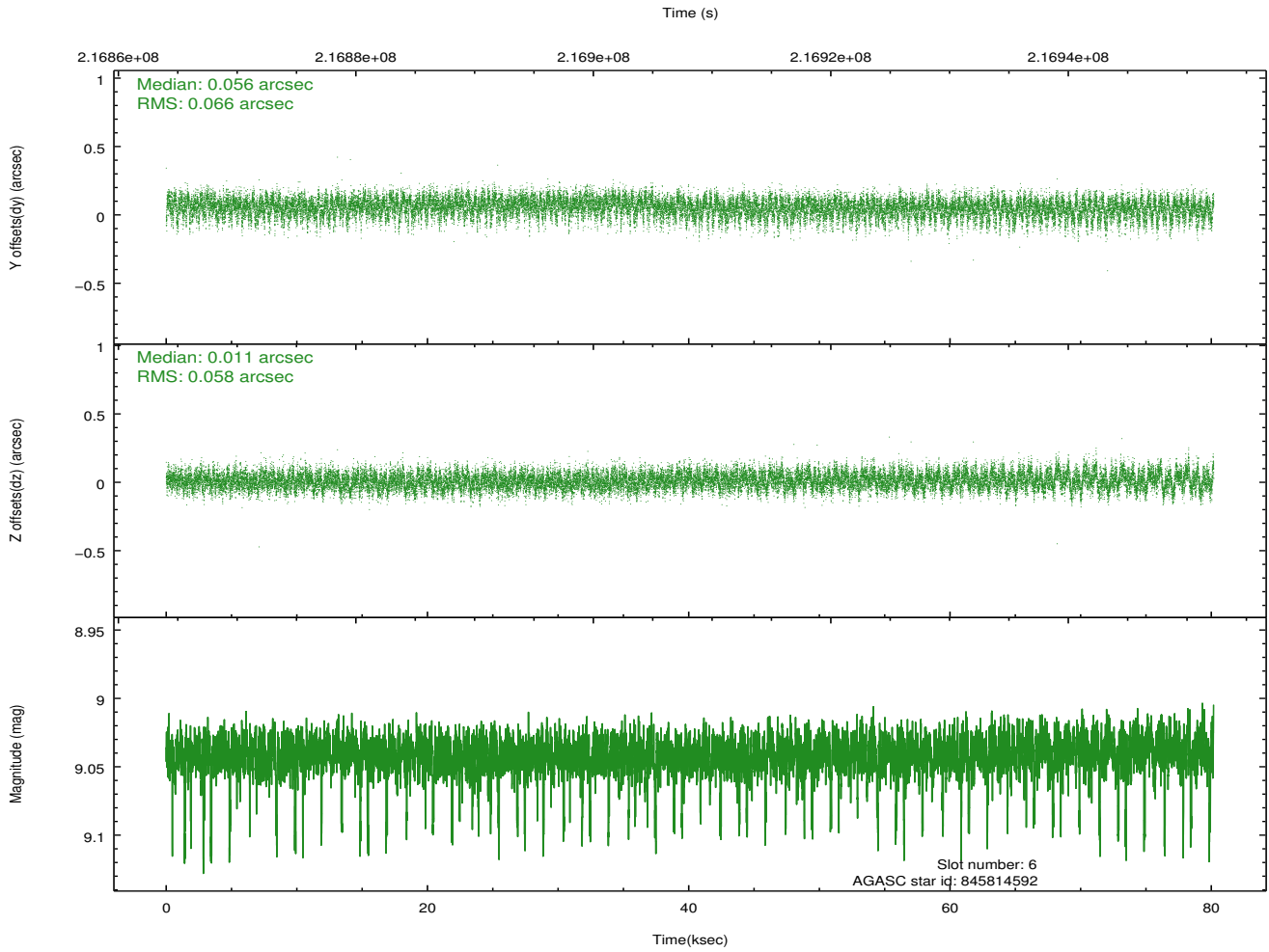
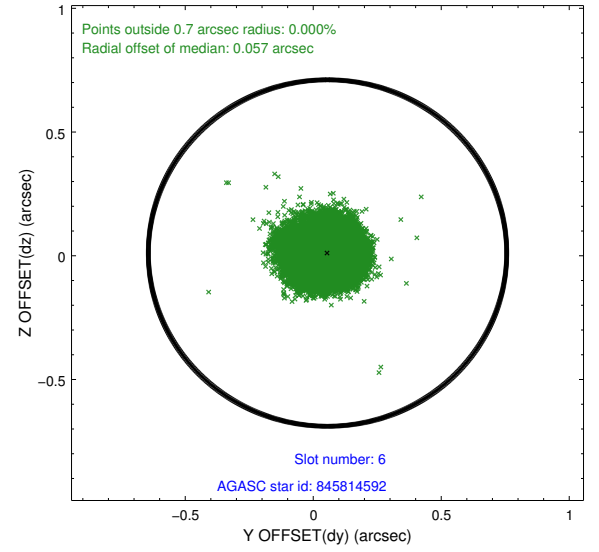
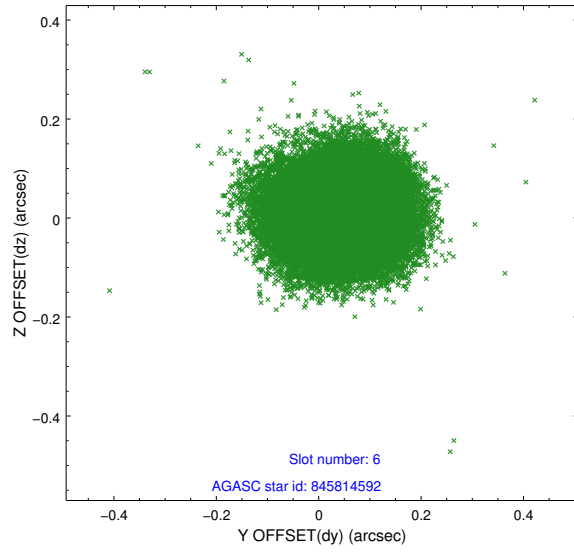
2.4.2 Slot 4



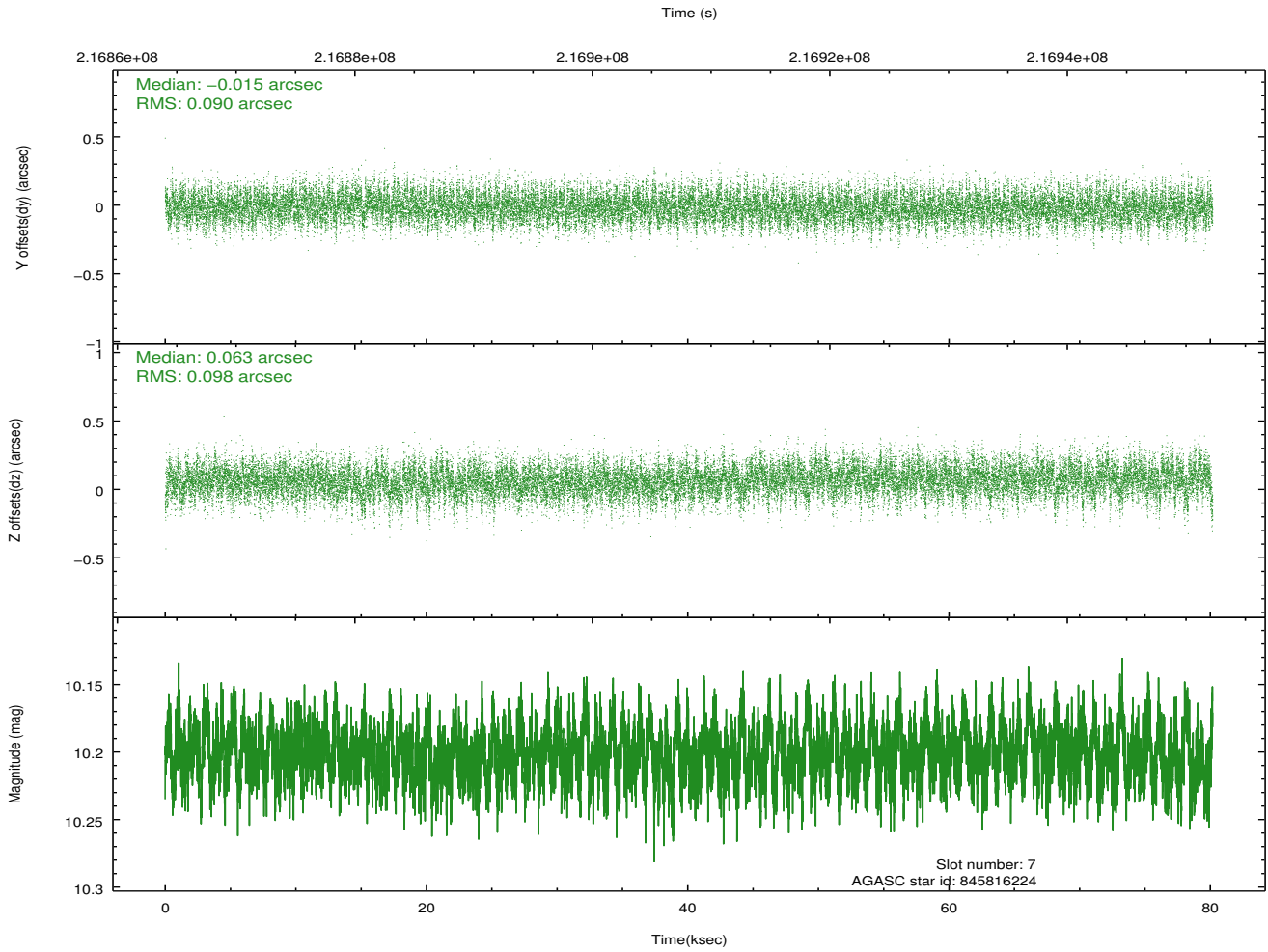
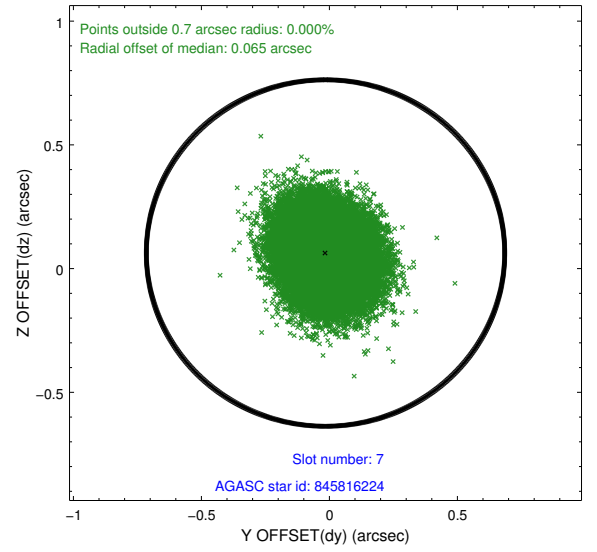
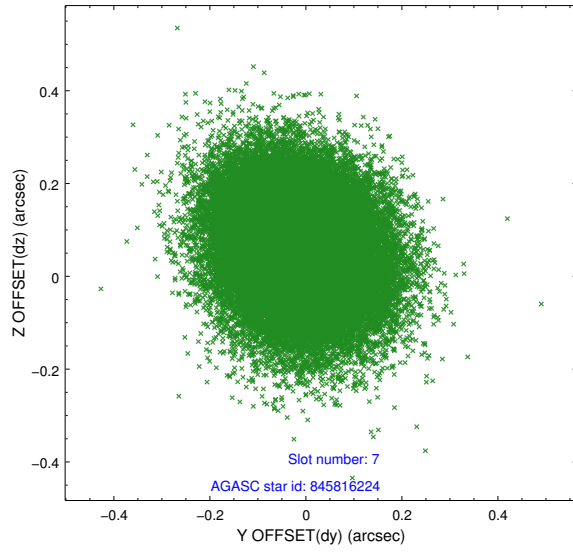
2.4.3 Slot 5



2.4.4 Slot 6

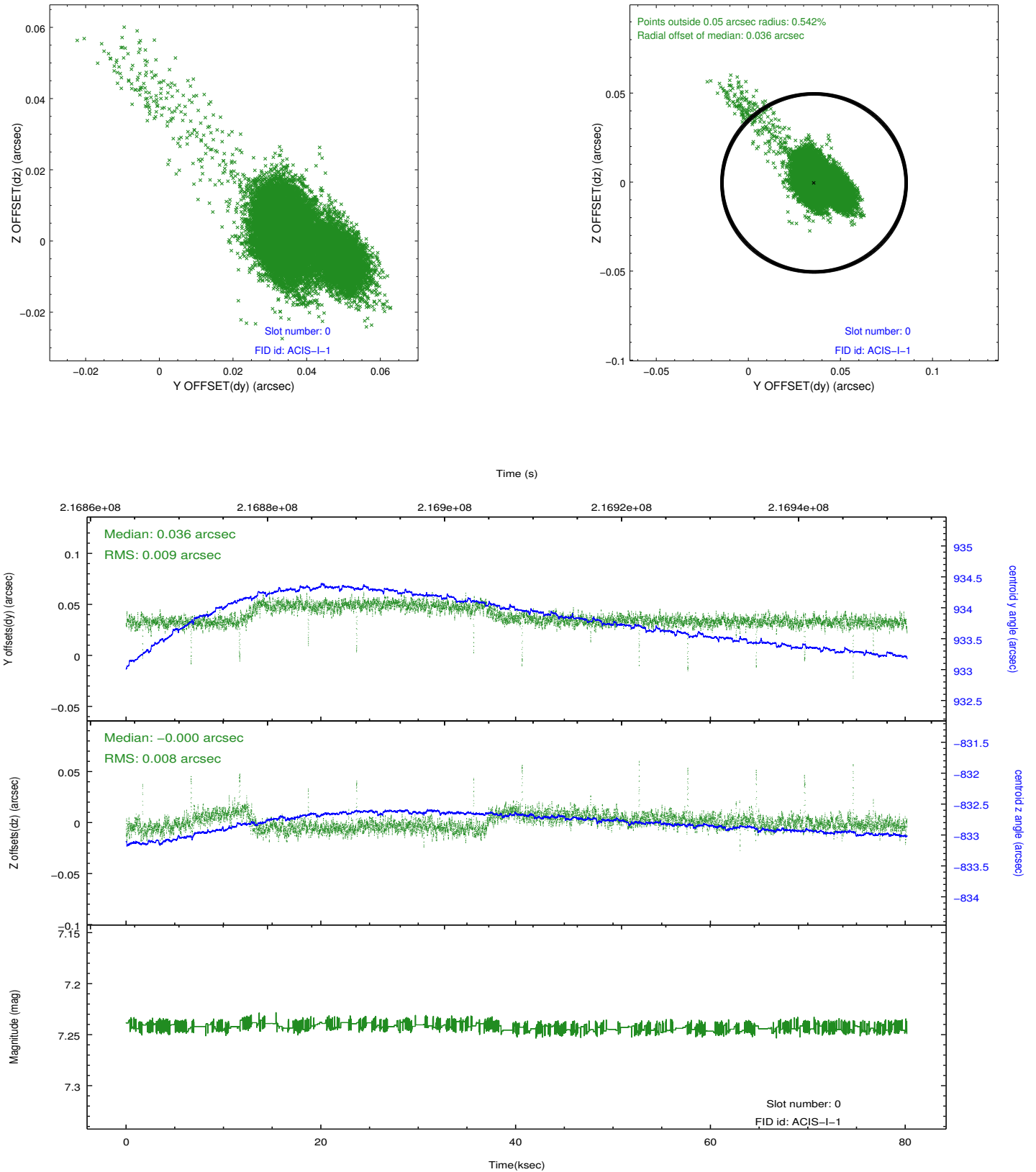


2.4.5 Slot 7

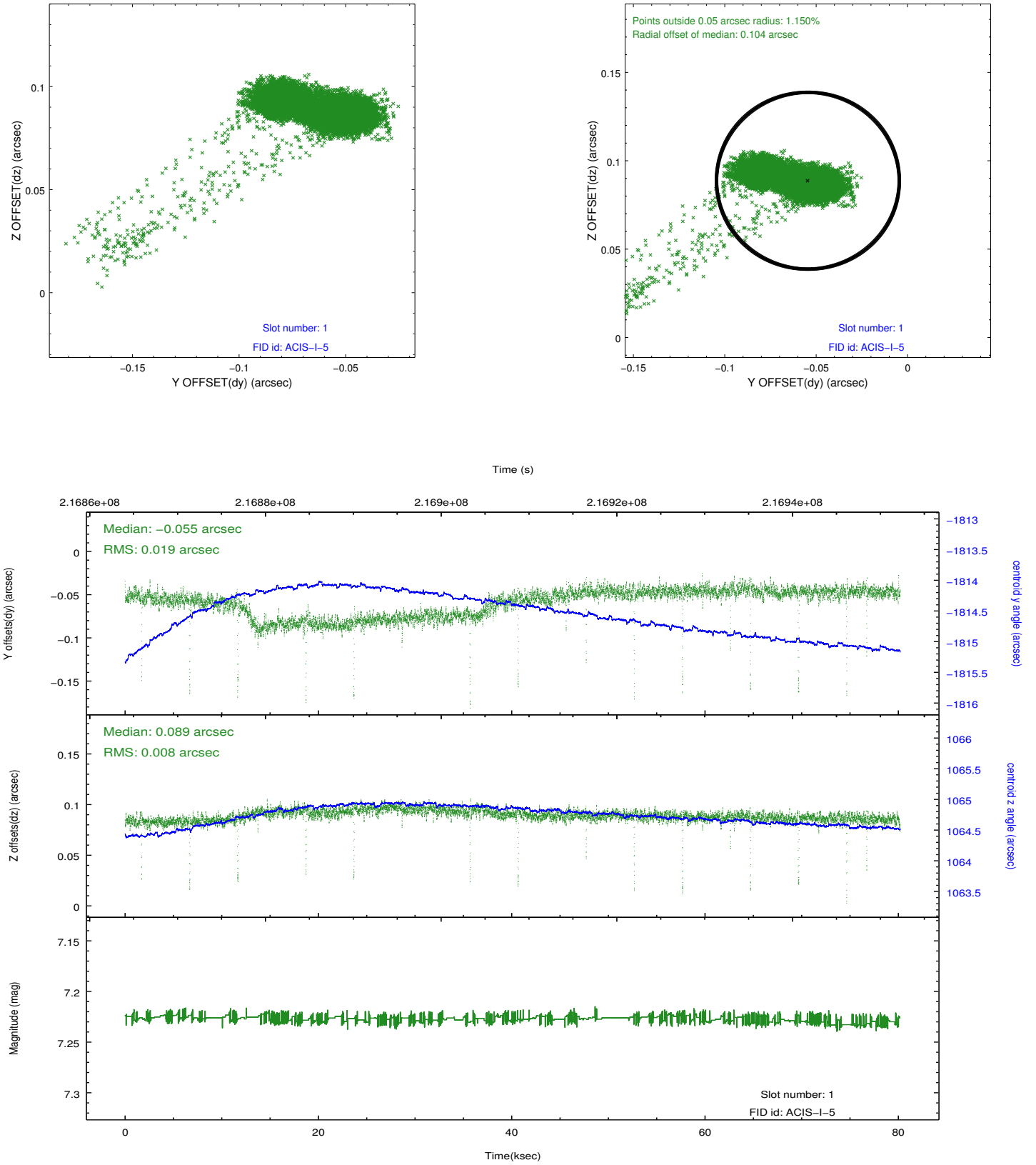


2.5 FID Slots

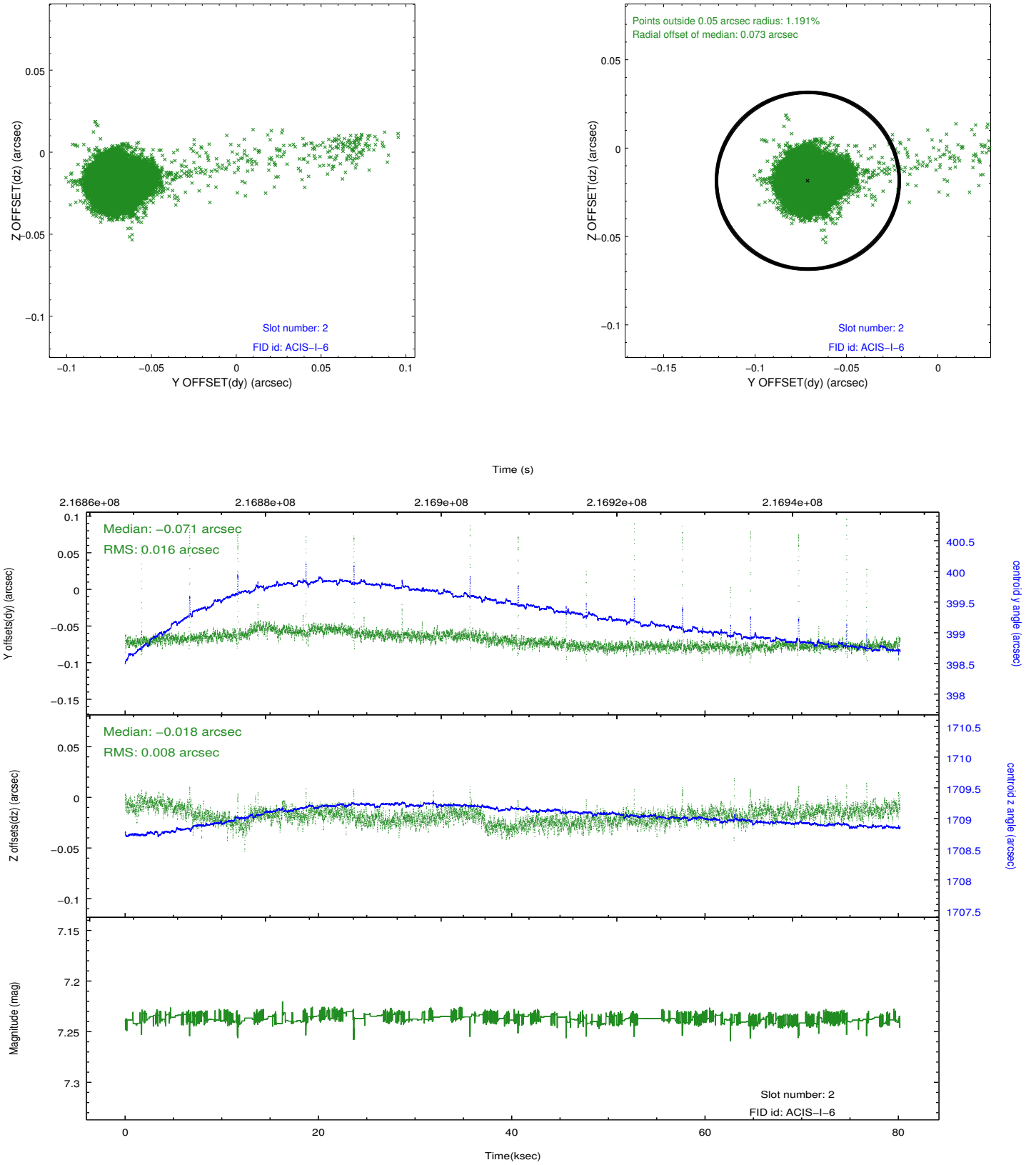
2.5.1 Slot 0



2.5.2 Slot 1



2.5.3 Slot 2



A Summary

A.1 Status

V&V Scientist	Jen Lauer
V&V Date (YYYY-MM-DD)	2013.01.04
V&V Edition	1
V&V Disposition and Status	OK
V&V Charge Time	80.175

A.2 Comments

Roll constraint met.