

V&V Reference Report

L2 ASCDS Version : 7.6.7.2

Observation 5018 - L2 Version 001
Chandra X-Ray Center

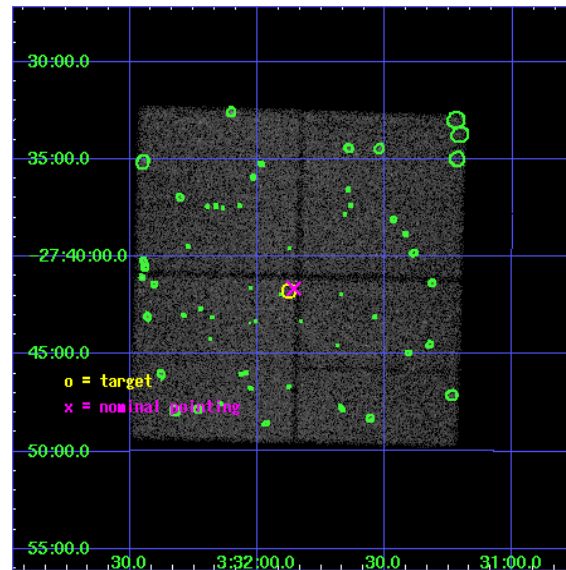
L2 Processing Date : May 18 2006

Contents

1	Front	2
2	OBI	3
2.1	OBI	3
2.1.1	Images	3
2.1.2	Bias	3
2.1.3	Parameters	4
2.1.4	Events	4
2.2	Compared Parameters	5
2.3	Aspect	6
2.4	Star Slots	9
2.4.1	Slot 3	9
2.4.2	Slot 4	10
2.4.3	Slot 5	11
2.4.4	Slot 6	12
2.4.5	Slot 7	13
2.5	FID Slots	14
2.5.1	Slot 0	14
2.5.2	Slot 1	15
2.5.3	Slot 2	16
3	Point Sources	17
A	Summary	18
A.1	Status	18
A.2	Comments	18

1 Front

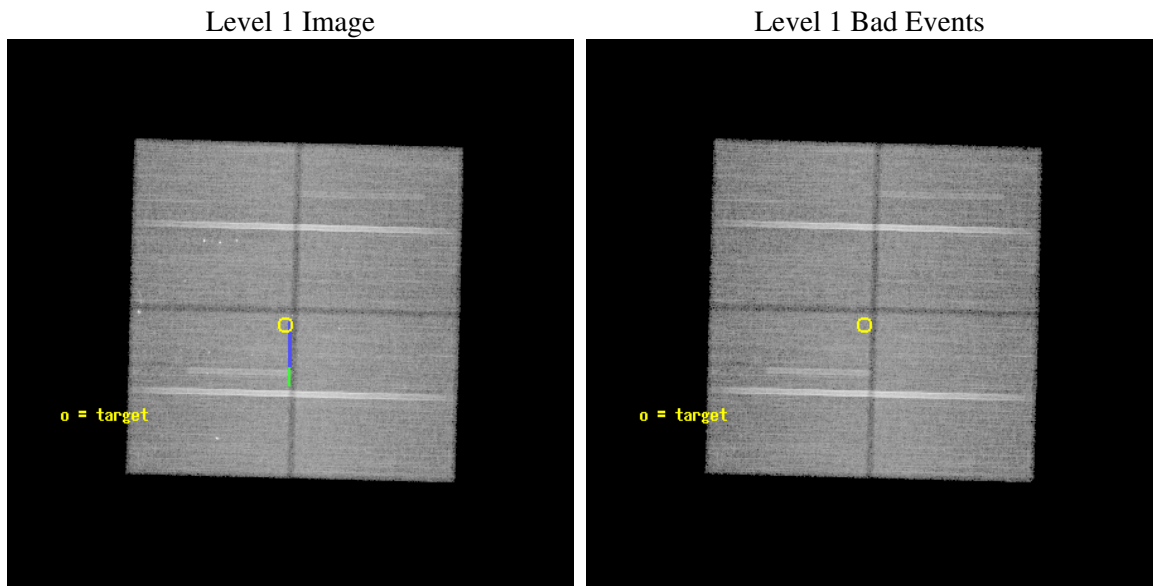
seq_num	900327
obs_id	5018
title	The Extended Chandra Deep Field-South Survey: A Public Chandra Legacy
observer	Prof. William Brandt
object	Extended CDF-S #2
dtcycle	0
cycle	P
ra_targ	52.96915
dec_targ	-27.69581
ra_nom	52.9642894932
dec_nom	-27.694108848484
roll_nom	181.50642037156
revision	2
ontime	72930.149206996
livetime	71977.263117212
ontime0	72958.417929202
ontime1	72948.99498862
ontime2	72952.135978699
ontime3	72930.149206996
l2events	131454



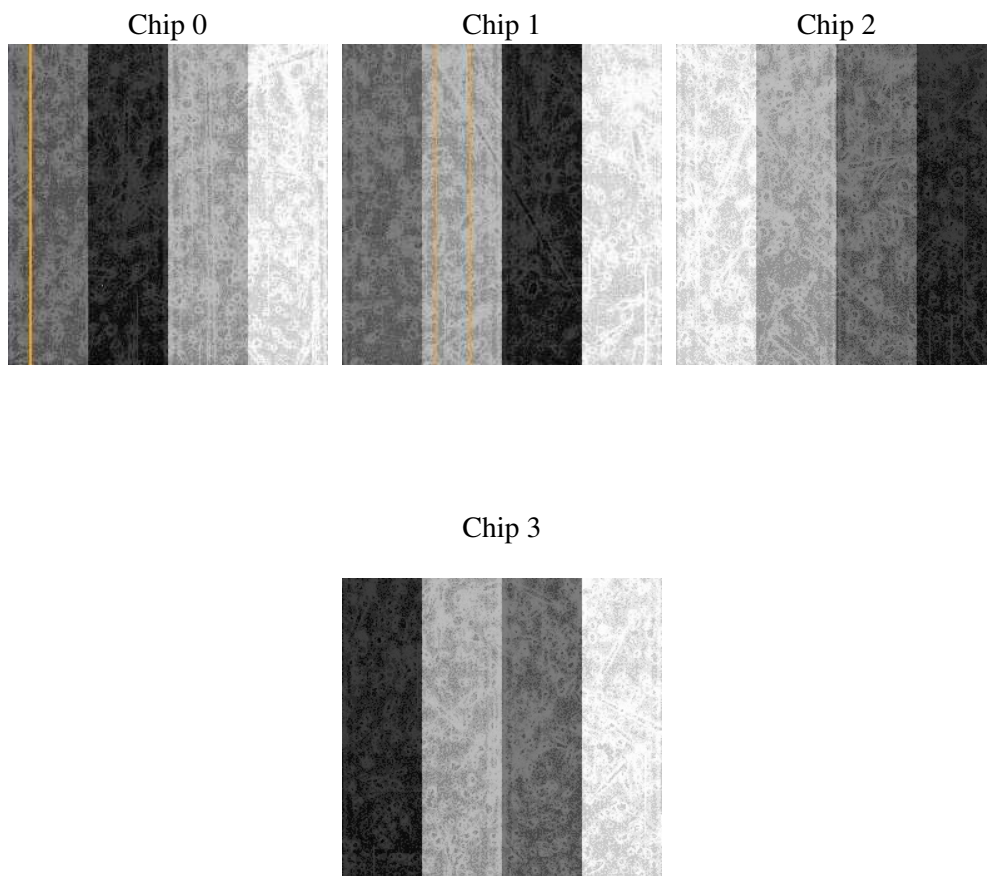
2 OBI

2.1 OBI

2.1.1 Images



2.1.2 Bias



2.1.3 Parameters

obi_num	0
ascdsver	7.6.7.2
caldbver	3.2.2
date	2006-05-18T05:27:47
revision	2

sched_exp_time	72800.000000
ontime	73310.965256959
ontime0	73339.233999044
ontime1	73329.811038584
ontime2	73332.952028662
ontime3	73310.965256959
l1events	1668655

2.1.4 Events

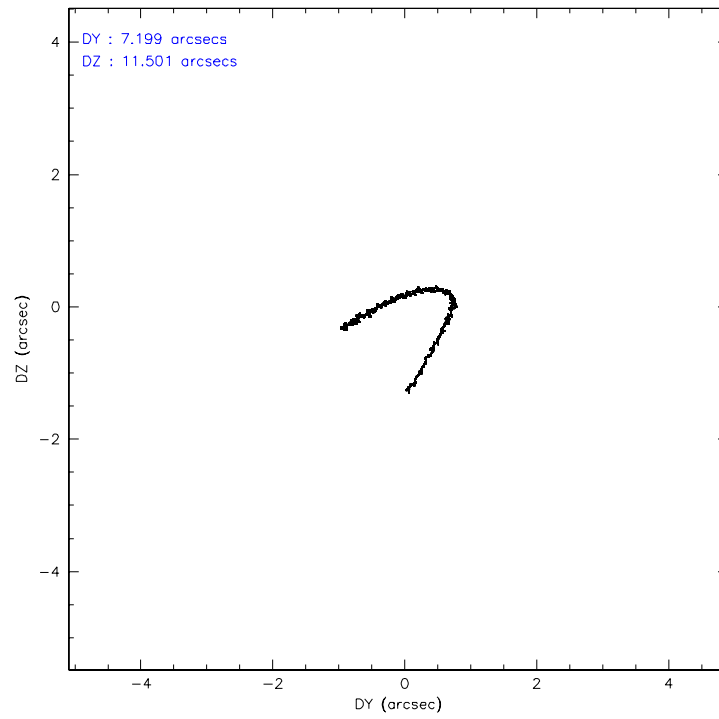
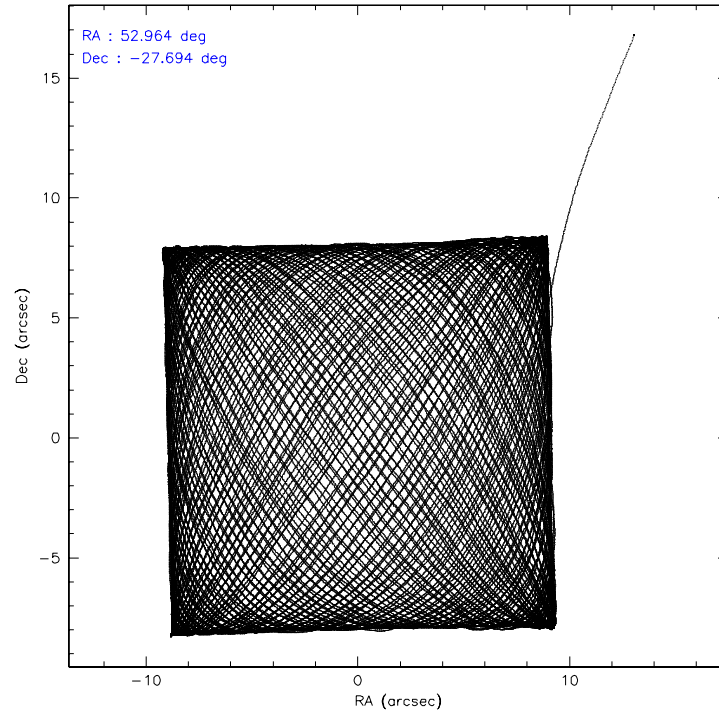
	ccd 0	ccd 1	ccd 2	ccd 3
level 1 events	394488	400491	446972	426704
rejected events	354783	356690	407809	387540
rejected %	89%	89%	91%	90%

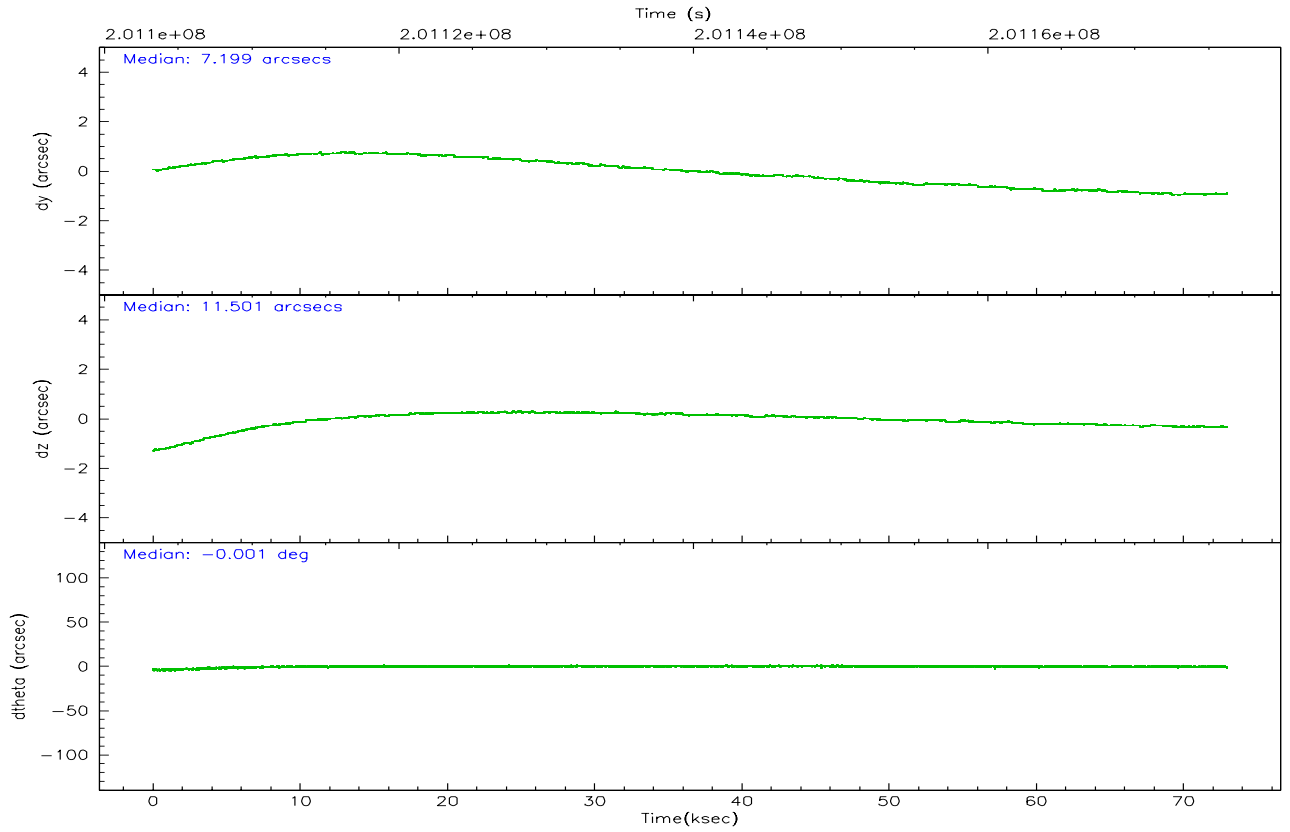
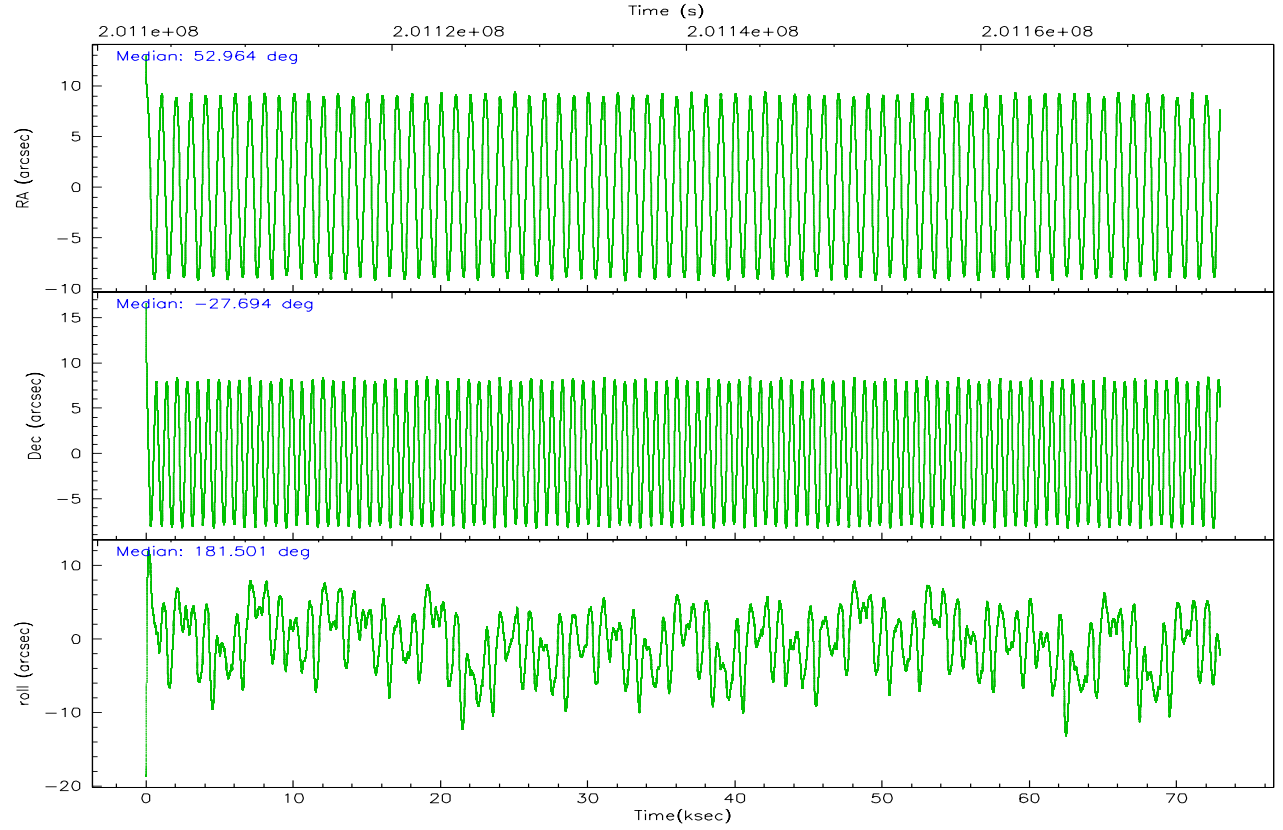
	ccd 0	ccd 1	ccd 2	ccd 3
grade 0 events	13908	15700	14160	14624
	3%	3%	3%	3%
grade 1 events	185	197	202	243
	0%	0%	0%	0%
grade 2 events	9495	9420	9358	8336
	2%	2%	2%	1%
grade 3 events	4776	5195	4399	4624
	1%	1%	0%	1%
grade 4 events	4428	5083	4488	4530
	1%	1%	1%	1%
grade 5 events	12613	13511	11855	14407
	3%	3%	2%	3%
grade 6 events	7305	8641	6944	7227
	1%	2%	1%	1%
grade 7 events	341778	342744	395566	372713
	86%	85%	88%	87%

2.2 Compared Parameters

Parameter	Planned	Actual	Parameter	Planned	Actual
Instrument	ACIS	ACIS	Obspar format version number	6	6
Detector	ACIS-0123	ACIS-0123	Obspar file type	PREDICTED	ACTUAL
Grating	NONE	NONE	Obspar update status	NONE	UPDATED
Data mode	VFAINT	VFAINT	On-chip summing requested	N	N
Observation mode	POINTING	POINTING	Subarray requested	NONE	NONE
Pointing RA	52.990571	52.96428949319962	Alternating exposures requested	N	N
Pointing Dec	-27.679702	-27.69410884848359	Primary exposure time	0.000000	3.1
Pointing Roll	181.309948	181.5064203715648			
Roll angle	180.000000	180.000000			
Roll tolerance	2.000000	2.000000			
Roll constraint allows 180D rotation	N	N			
SIM focus pos (mm)	-0.782348	-0.7809083437167272			
SIM defocus (mm)	0	0.001439871863259334			
SIM translation stage pos (mm)	-233.592463	-233.5874344608287			
SIM translation stage offset (mm)	0	-0.005018542100998502			
Observation start time	201103451.184000	201102343.17787			
Observation start date	2004-05-16T14:03:07	2004-05-16T13:45:43			
Observation end time	201176251.184000	201176868.88116			
Observation end date	2004-05-17T10:16:27	2004-05-17T10:27:48			
Read mode	TIMED	TIMED			

2.3 Aspect



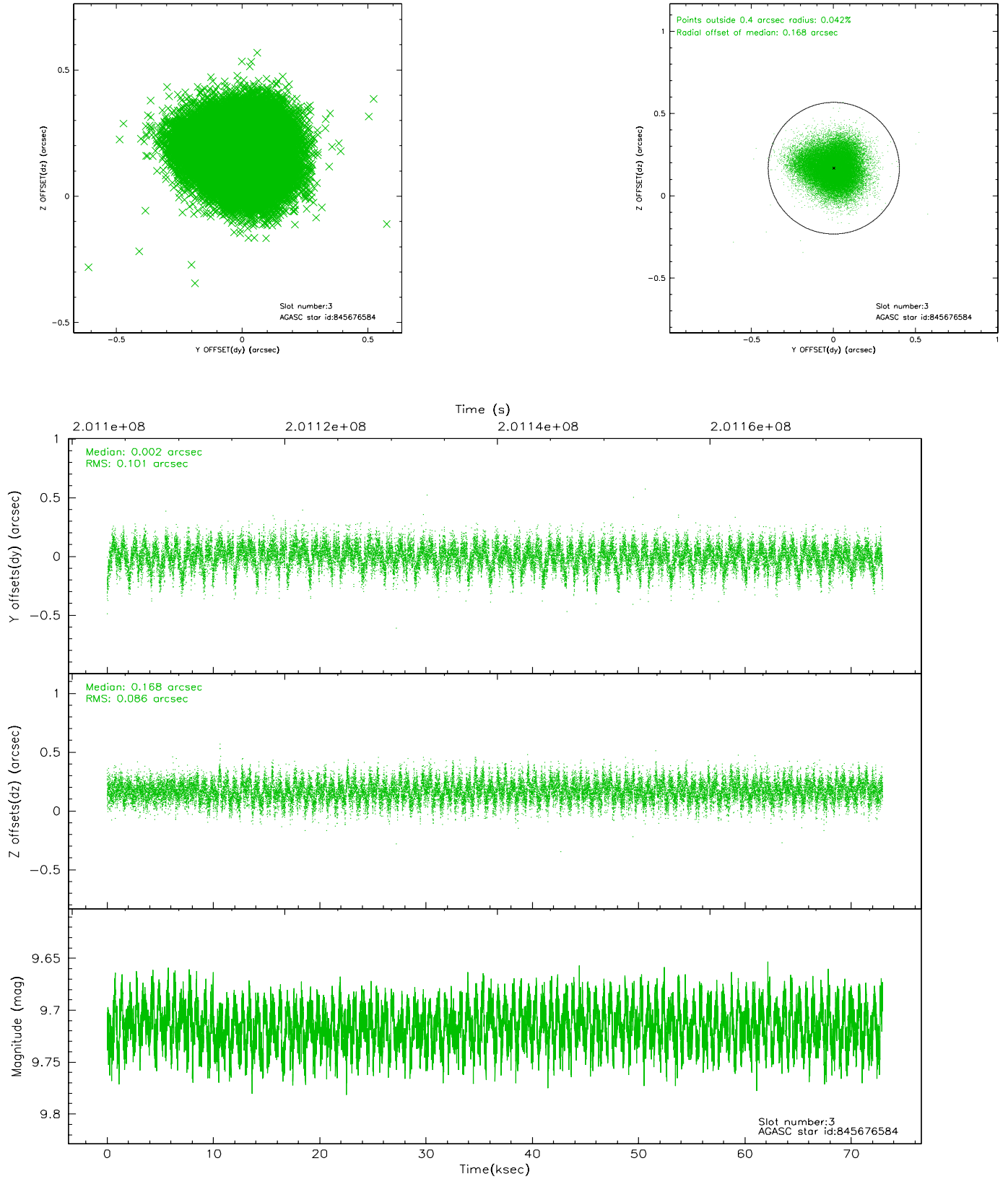


Slot Statistics

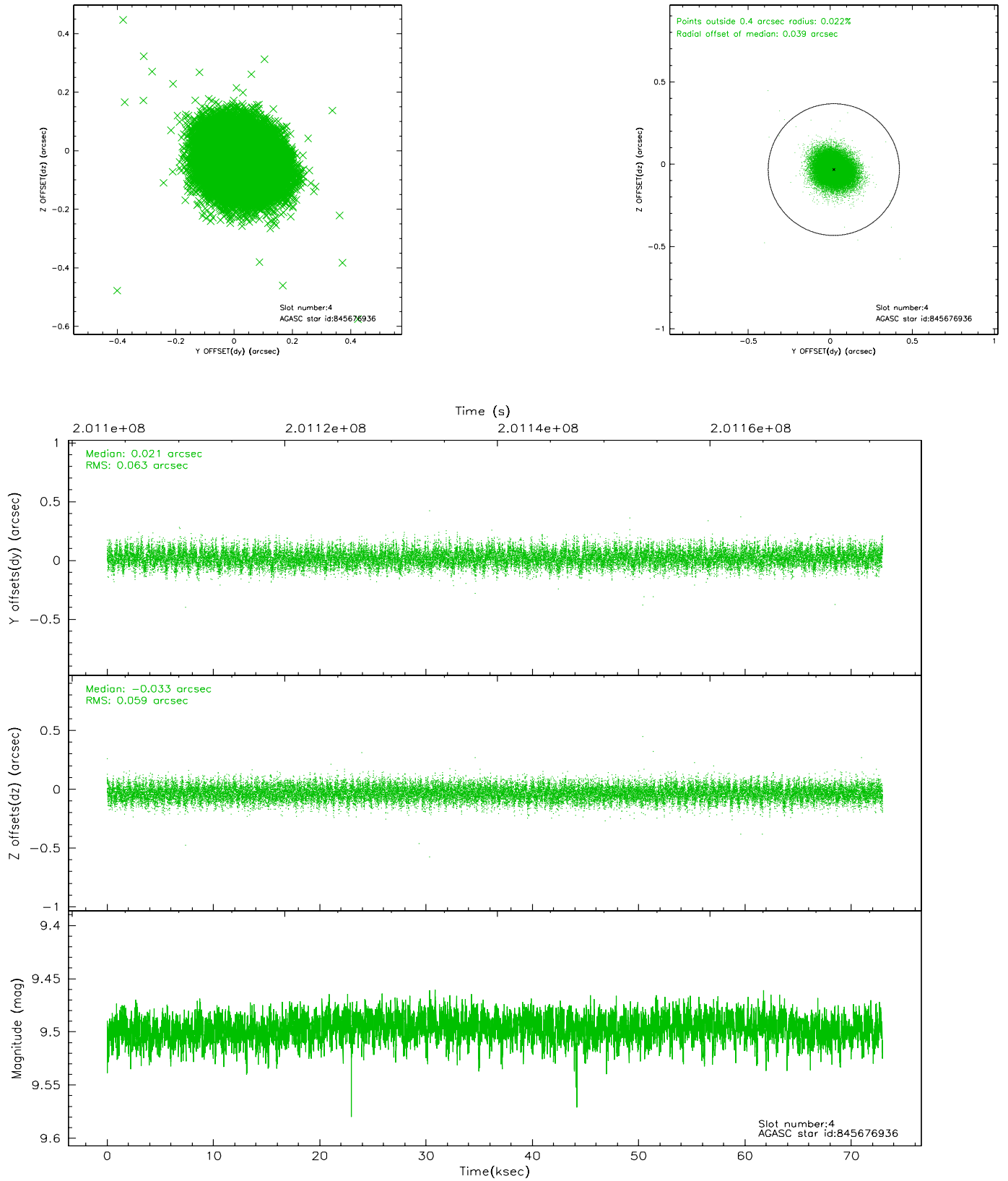
slot	status	id	mag	n_pts	med_dy	med_dz	dr1	dr2	ra	dec	mean_y	mean_z
0	FID	ACIS-I-1	7.24	17794	0.019	0.011	0.011	0.020	0.000000	0.000000	932.52	-834.95
1	FID	ACIS-I-5	7.23	17794	-0.128	0.051	0.015	0.025	0.000000	0.000000	-1815.73	1062.67
2	FID	ACIS-I-6	7.25	17792	0.018	0.009	0.013	0.024	0.000000	0.000000	398.19	1707.01
3	GUIDE	845676584	9.72	35567	0.002	0.168	0.141	0.227	52.264247	-27.542890	2307.13	-538.15
4	GUIDE	845676936	9.50	35570	0.021	-0.033	0.091	0.148	52.843773	-27.880153	483.74	711.05
5	GUIDE	845807880	8.80	35580	-0.002	-0.044	0.069	0.111	53.382027	-27.886093	-1227.93	773.21
6	GUIDE	845414752	10.72	35527	-0.027	0.107	0.182	0.304	53.035275	-27.097593	-190.88	-2091.60
7	GUIDE	845683408	9.22	35568	0.002	-0.200	0.096	0.153	52.484531	-28.338862	1657.56	2339.10

2.4 Star Slots

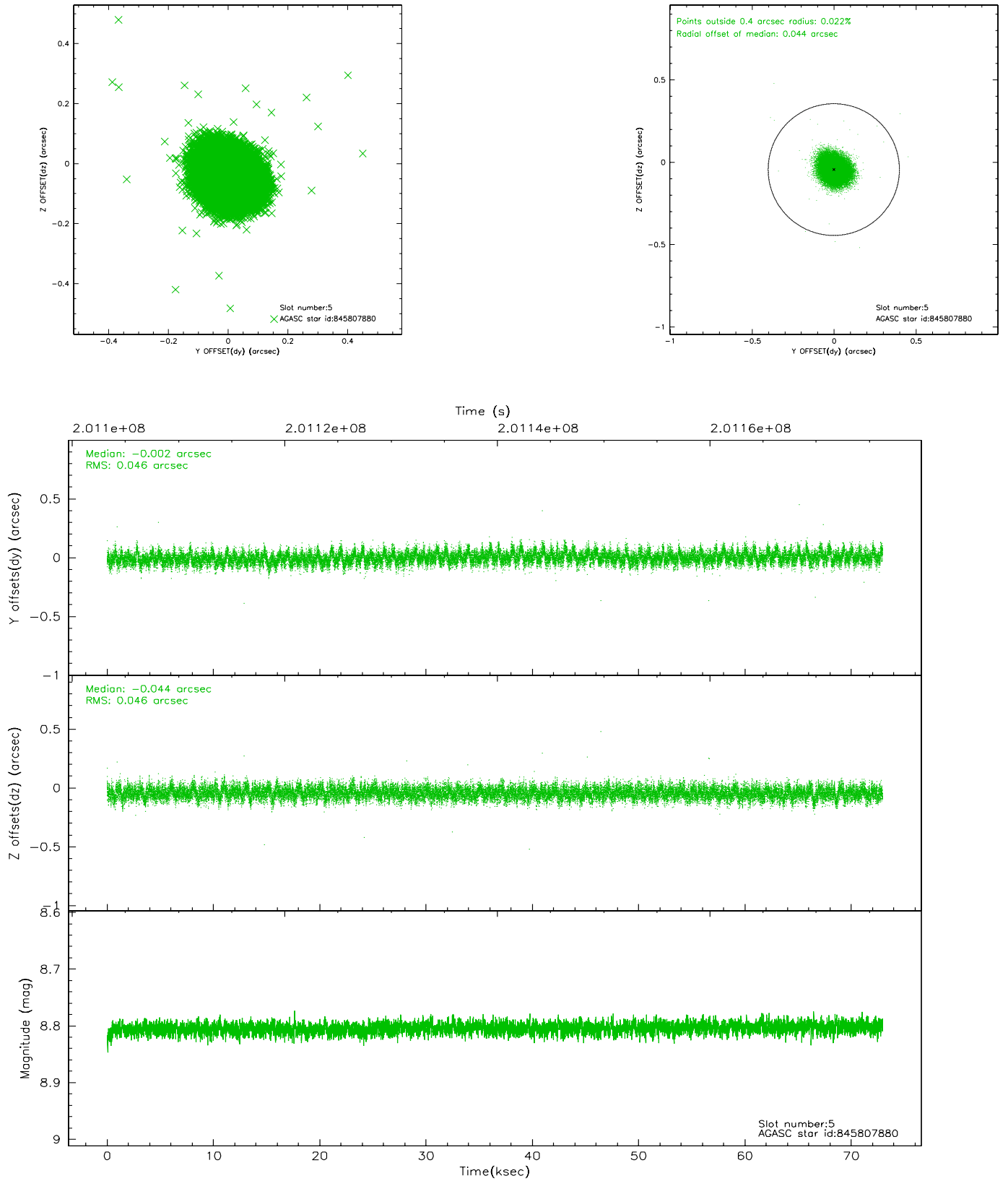
2.4.1 Slot 3



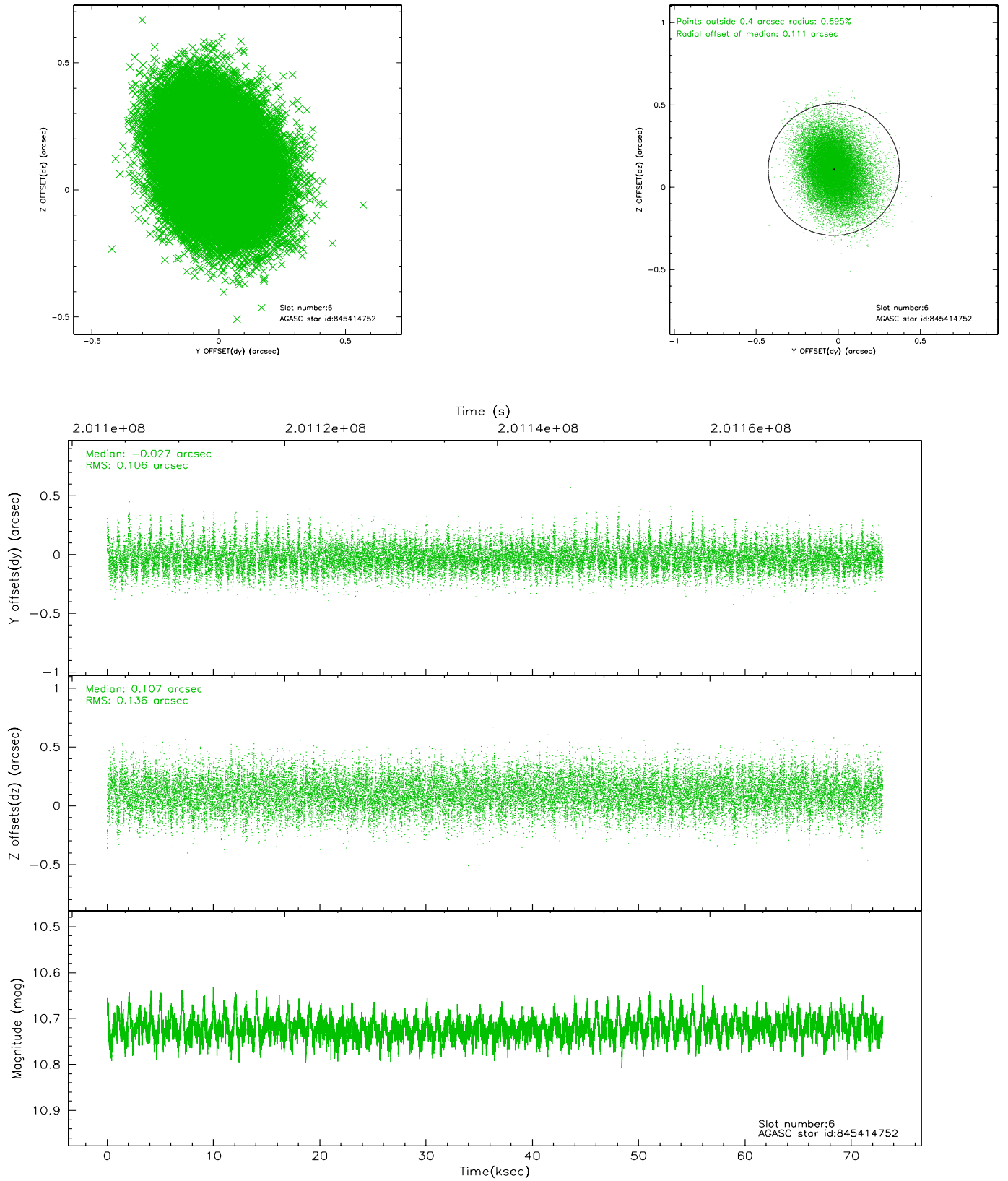
2.4.2 Slot 4



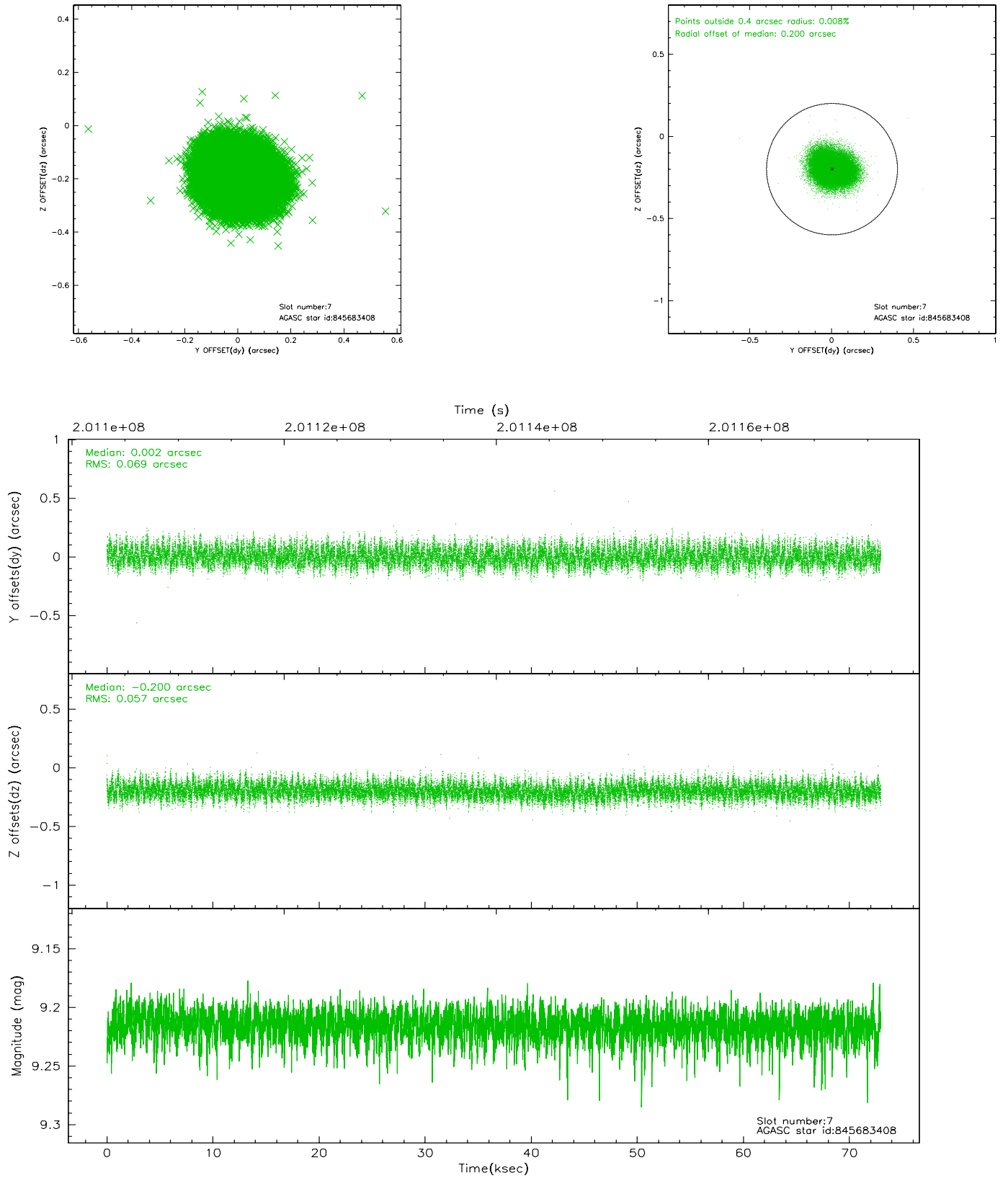
2.4.3 Slot 5



2.4.4 Slot 6

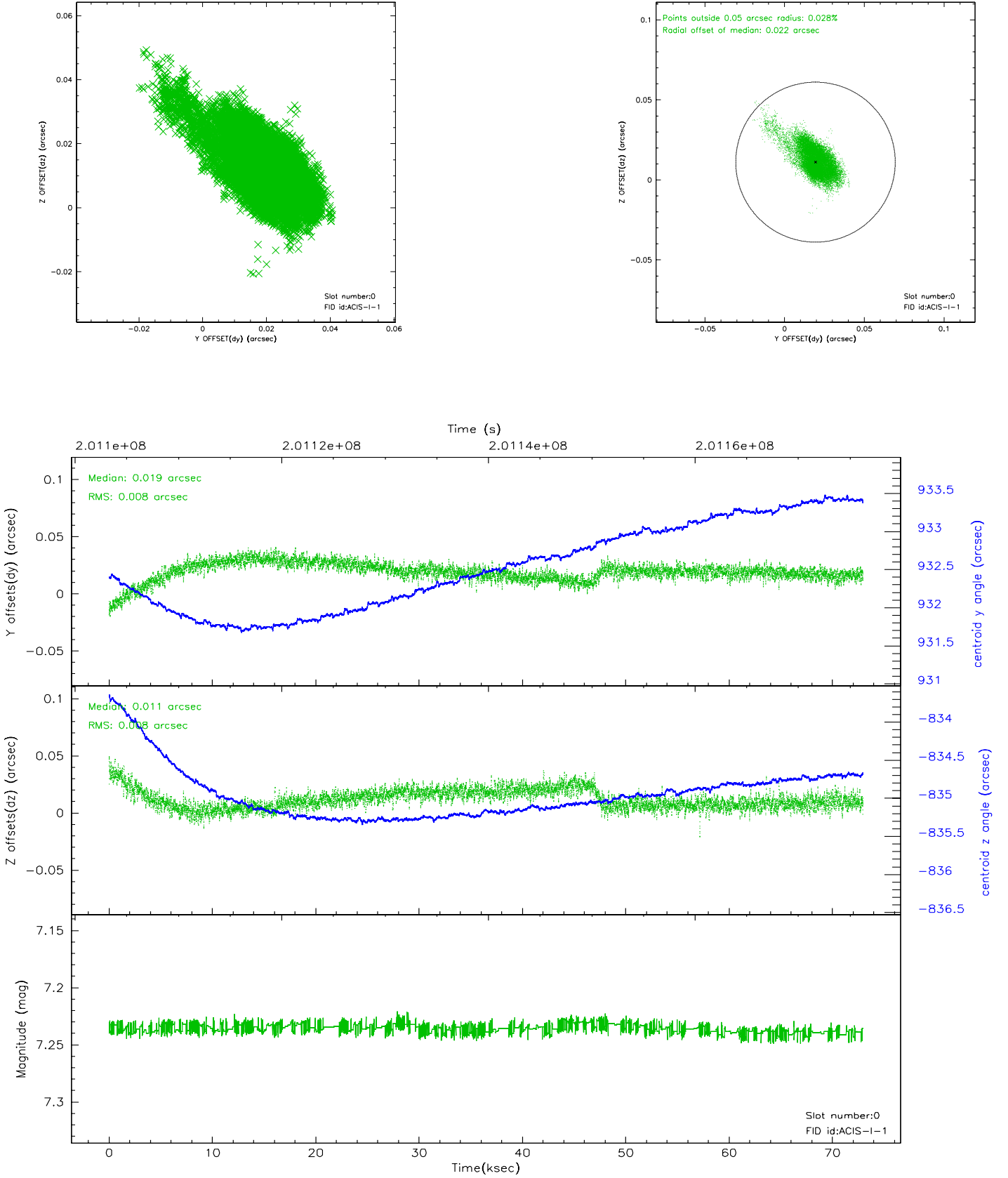


2.4.5 Slot 7

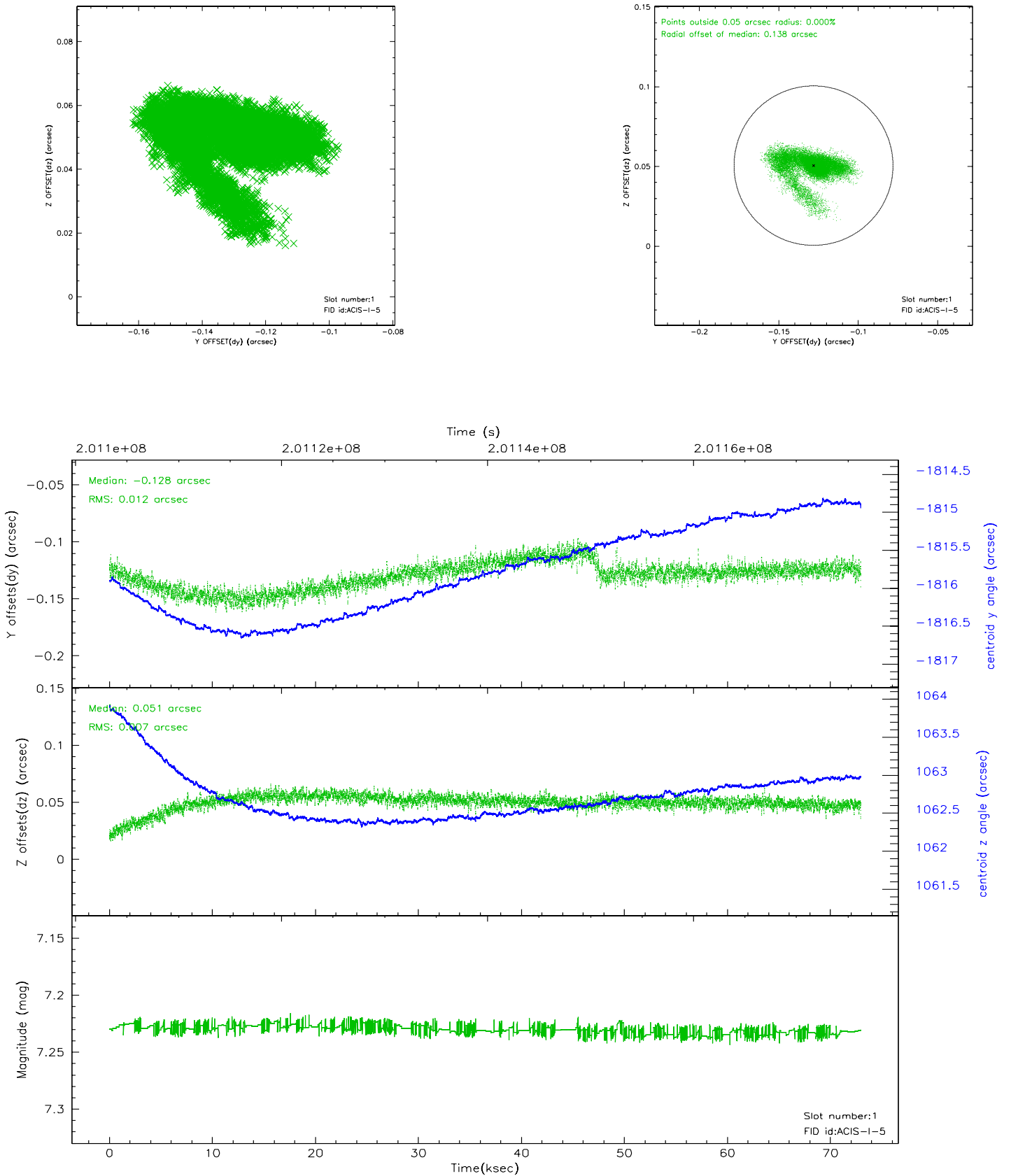


2.5 FID Slots

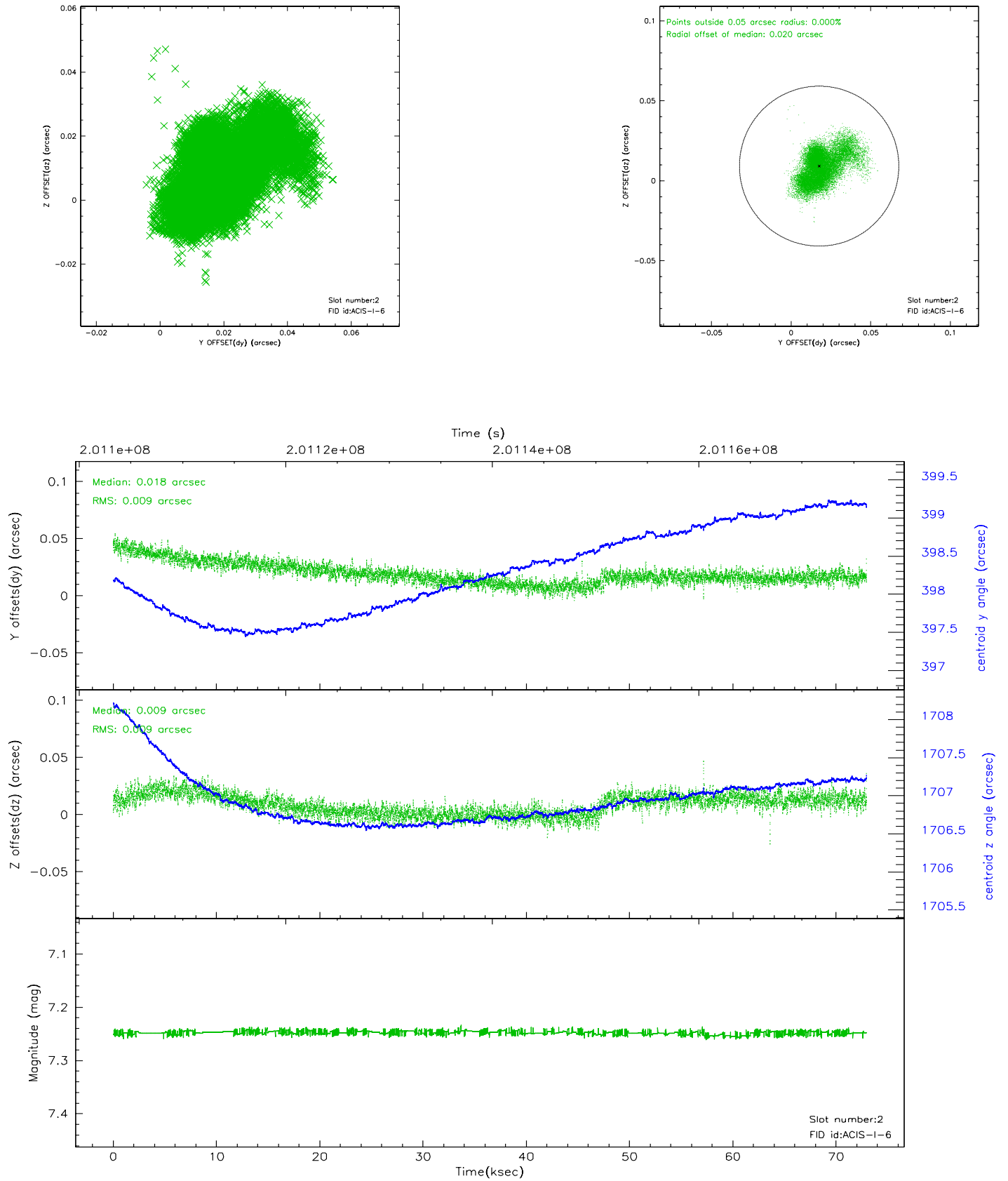
2.5.1 Slot 0



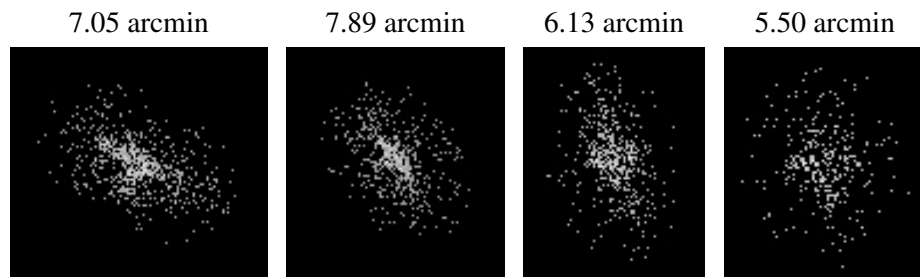
2.5.2 Slot 1



2.5.3 Slot 2



3 Point Sources



A Summary

A.1 Status

V&V Scientist	Jen Lauer
V&V Date (YYYY-MM-DD)	2006.05.18
V&V Edition	1
V&V Disposition and Status	OK
V&V Charge Time	72.93

A.2 Comments

Roll constraint met.