

# V&V Reference Report

## L2 ASCDS Version : 8.5

Observation 6103 - L2 Version 3  
Chandra X-Ray Center

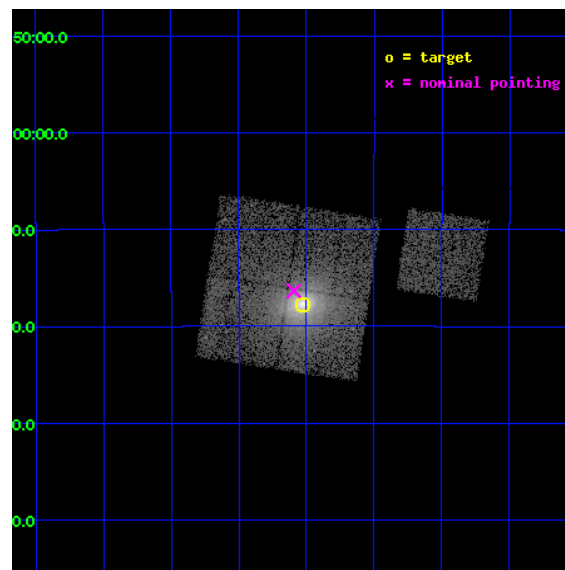
L2 Processing Date : Dec 9 2012

## Contents

<b>1</b>	<b>Front</b>	<b>2</b>
<b>2</b>	<b>OBI</b>	<b>3</b>
2.1	OBI . . . . .	3
2.1.1	Images . . . . .	3
2.1.2	Bias . . . . .	3
2.1.3	Parameters . . . . .	4
2.1.4	Events . . . . .	4
2.2	Compared Parameters . . . . .	5
2.3	Aspect . . . . .	6
2.4	Star Slots . . . . .	9
2.4.1	Slot 3 . . . . .	9
2.4.2	Slot 4 . . . . .	10
2.4.3	Slot 5 . . . . .	11
2.4.4	Slot 6 . . . . .	12
2.4.5	Slot 7 . . . . .	13
2.5	FID Slots . . . . .	14
2.5.1	Slot 0 . . . . .	14
2.5.2	Slot 1 . . . . .	15
2.5.3	Slot 2 . . . . .	16
<b>A</b>	<b>Summary</b>	<b>17</b>
A.1	Status . . . . .	17
A.2	Comments . . . . .	17

# 1 Front

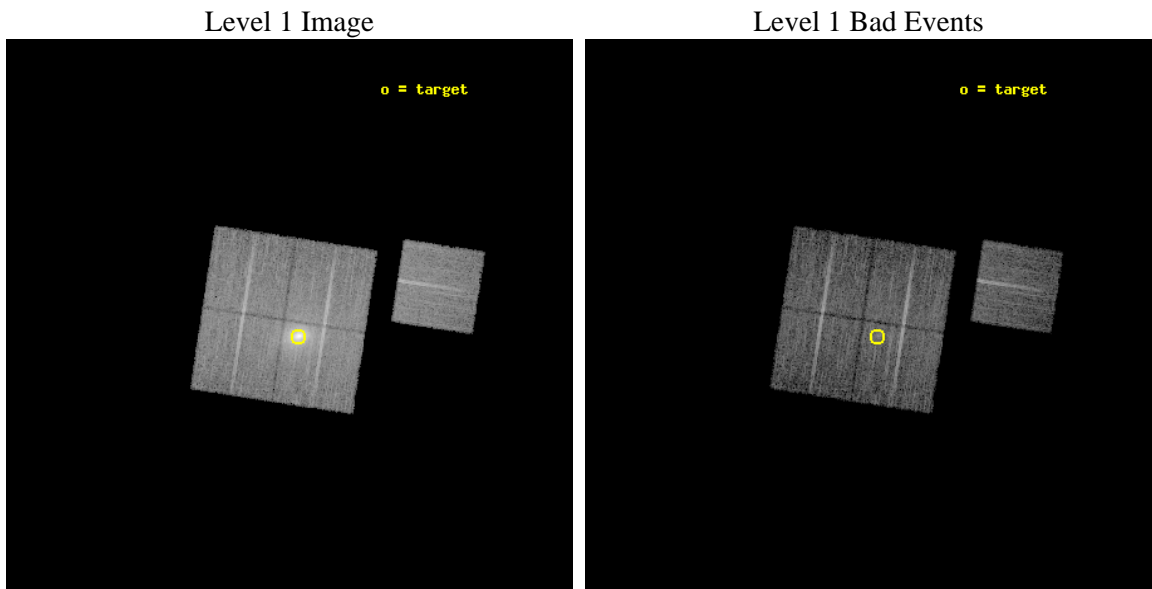
seq_num	800551	Sequence number
obs_id	6103	Observation id
title	Probing dark energy using the X-ray gas mass fraction in dynamically relaxed galaxy clusters	Proposal title
observer	Prof. Steven Allen	Principal investigator
object	PKS0745-191	Source name
dtcycle	0	&#160
cycle	P	events from which exps? Prim/Second/Both
ra_targ	116.882083	Observer's specified target RA [deg]
dec_targ	-19.29575	Observer's specified target Dec [deg]
ra_nom	116.89813334228	Nominal RA [deg]
dec_nom	-19.272351290717	Nominal Dec [deg]
roll_nom	98.75194355314	Nominal Roll [deg]
revision	3	Processing version of data
ontime	10406.618049443	Sum of GTIs [s]
livetime	10270.647923386	Livetime [s]
ontime0	10409.759019703	Sum of GTIs [s]
ontime1	10412.899979949	Sum of GTIs [s]
ontime2	10412.899979949	Sum of GTIs [s]
ontime3	10406.618049443	Sum of GTIs [s]
ontime6	10406.617969692	Sum of GTIs [s]
l2events	87490	Number of level 2 events



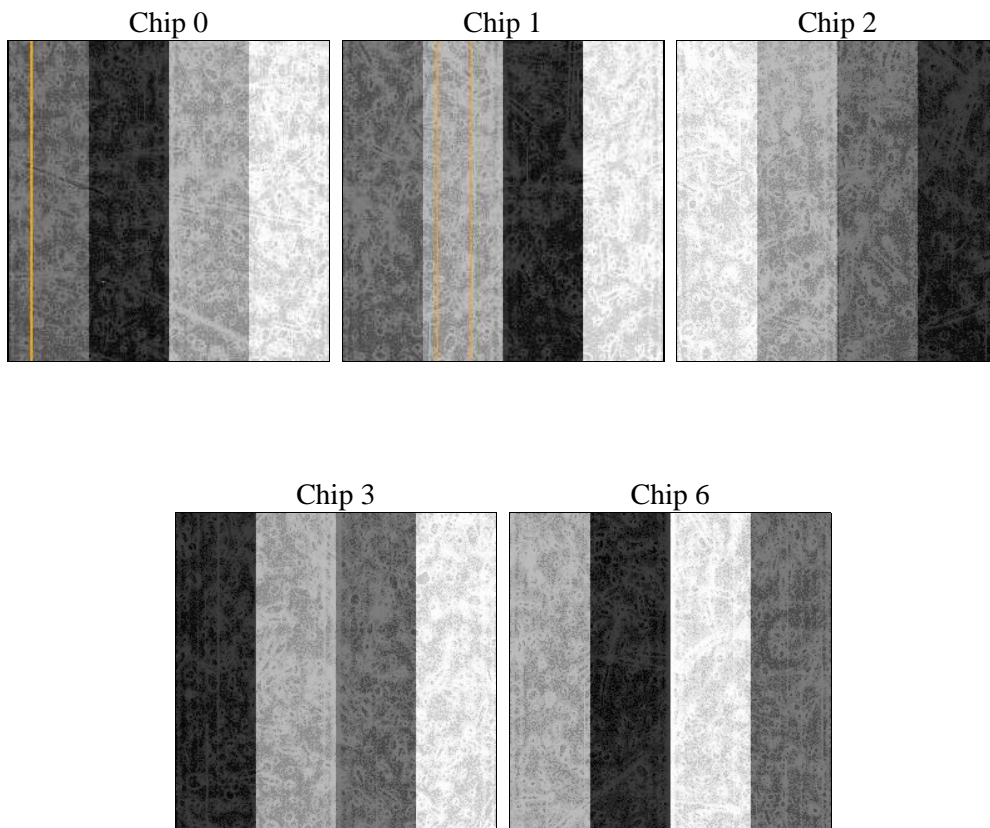
## 2 OBI

### 2.1 OBI

#### 2.1.1 Images



#### 2.1.2 Bias



### 2.1.3 Parameters

obi_num	0	Obi number	sched_exp_time	10279.000000	[s] Scheduled observation exposure time
ascdsver	8.5	Processing system revision	ontime	10406.618049443	Sum of GTIs [s]
caldbver	4.5.4	&#160	ontime0	10409.759019703	Sum of GTIs [s]
date	2012-12-09T06:58:32	Date and time of file creation	ontime1	10412.899979949	Sum of GTIs [s]
revision	3	Processing version of data	ontime2	10412.899979949	Sum of GTIs [s]
			ontime3	10406.618049443	Sum of GTIs [s]
			ontime6	10406.617969692	Sum of GTIs [s]
			l1events	402776	Number of level 1 events

### 2.1.4 Events

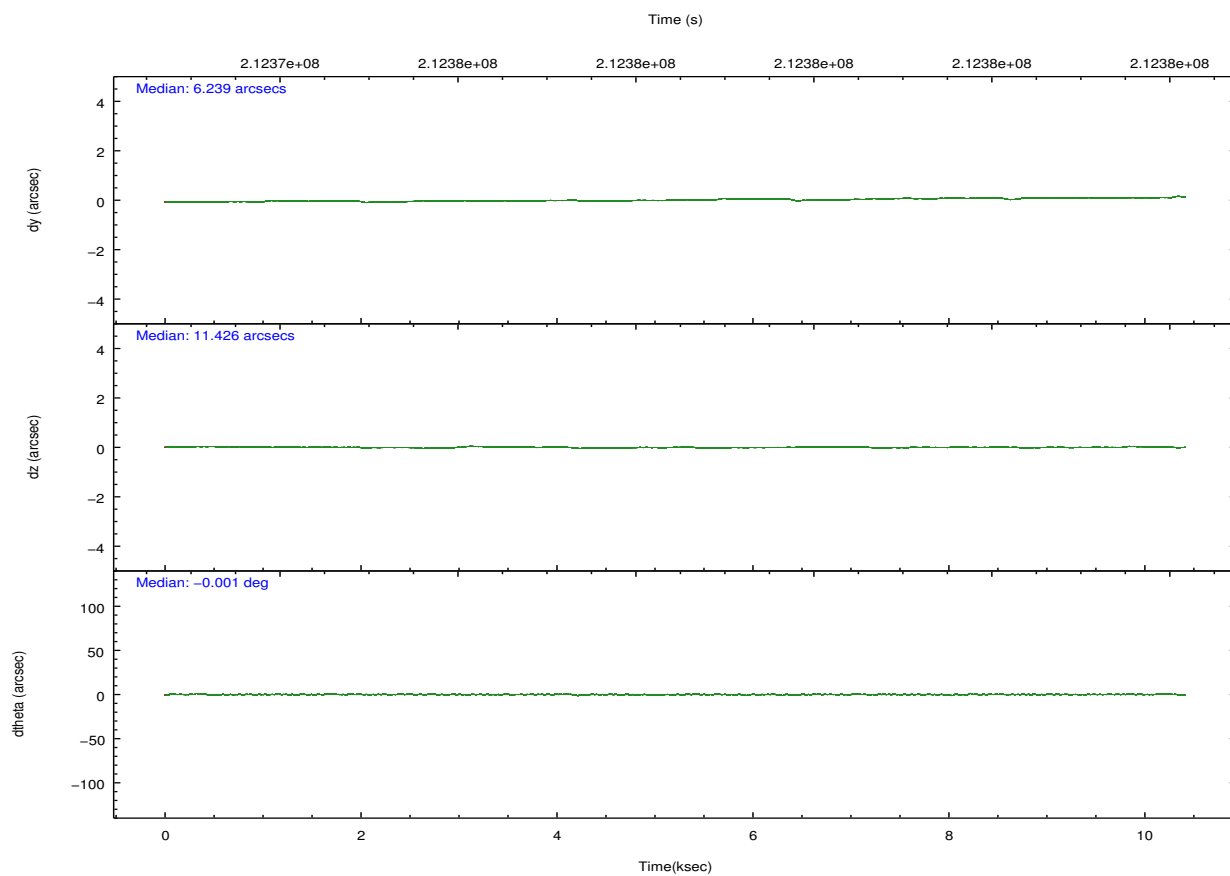
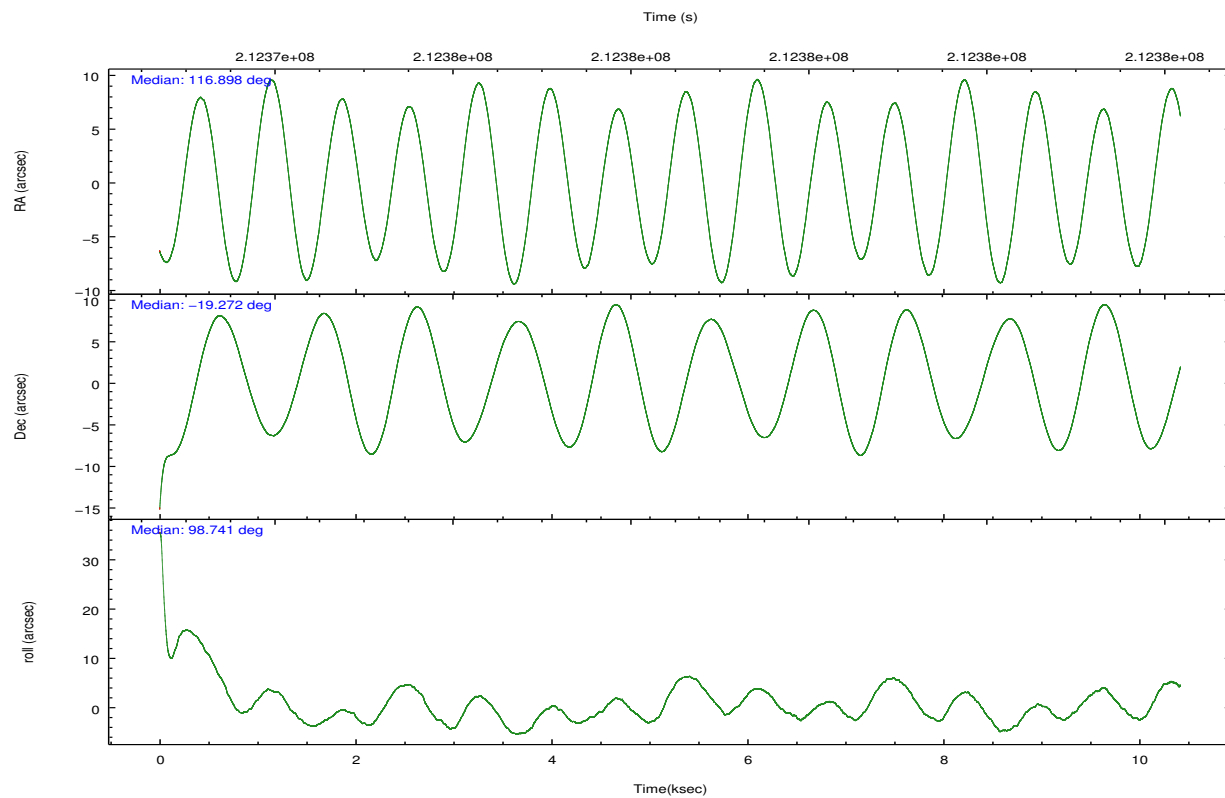
	ccd 0	ccd 1	ccd 2	ccd 3	ccd 6
level 1 events	67703	69153	76093	123048	66779
rejected events	60198	57190	65488	65162	60191
rejected %	88%	82%	86%	52%	90%

	ccd 0	ccd 1	ccd 2	ccd 3	ccd 6
grade 0 events	3290	6588	5881	44187	2411
	4%	9%	7%	35%	3%
grade 1 events	47	48	60	327	25
	0%	0%	0%	0%	0%
grade 2 events	1659	2168	2086	7022	1419
	2%	3%	2%	5%	2%
grade 3 events	843	1052	861	2563	802
	1%	1%	1%	2%	1%
grade 4 events	737	997	869	2555	840
	1%	1%	1%	2%	1%
grade 5 events	2398	2655	2307	2821	2694
	3%	3%	3%	2%	4%
grade 6 events	1367	1640	1359	2847	1465
	2%	2%	1%	2%	2%
grade 7 events	57362	54005	62670	60726	57123
	84%	78%	82%	49%	85%

## 2.2 Compared Parameters

Parameter	Planned	Actual	Parameter	Planned	Actual
Instrument	ACIS	ACIS	Obspar format version number	7	7
Detector	ACIS-01236	ACIS-01236	Obspar file type	PREDICTED	ACTUAL
Grating	NONE	NONE	Obspar update status	NONE	UPDATED
Data mode	VFAINT	VFAINT	Number of optional ACIS chips dropped	0	0
Observation mode	POINTING	POINTING	On-chip summing requested	N	N
[deg] Pointing RA	116.916381	116.8981333422847	Subarray requested	NONE	NONE
[deg] Pointing Dec	-19.293577	-19.27235129071723	Alternating exposures requested	N	N
[deg] Pointing Roll	98.549260	98.75194355314004	[s] Primary exposure time	0.000000	3.1
[mm] SIM focus pos	-0.782348	-0.7809083437167272			
[mm] SIM defocus	0	0.001439871863259334			
[mm] SIM translation stage pos	-233.592463	-233.5874344608287			
[mm] SIM translation stage offset	0	-0.005018542100998502			
[s] Observation start time (MET)	212373367.184000	212372111.56579			
Observation start date	2004-09-24T00:35:03	2004-09-24T00:15:11			
[s] Observation end time (MET)	212383646.184000	212384659.61635			
Observation end date	2004-09-24T03:26:22	2004-09-24T03:44:19			
Read mode	TIMED	TIMED			

## 2.3 Aspect

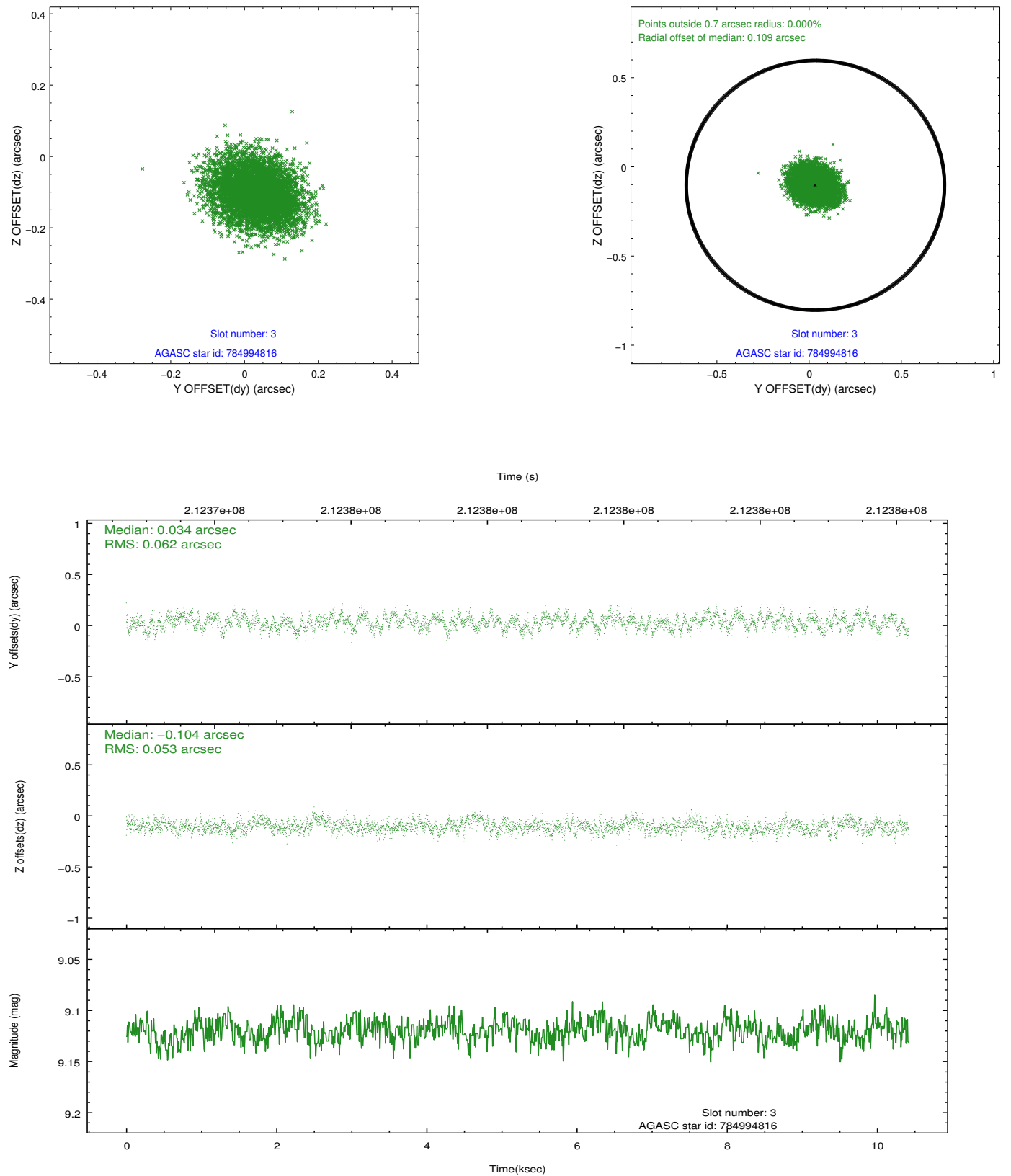


### Slot Statistics

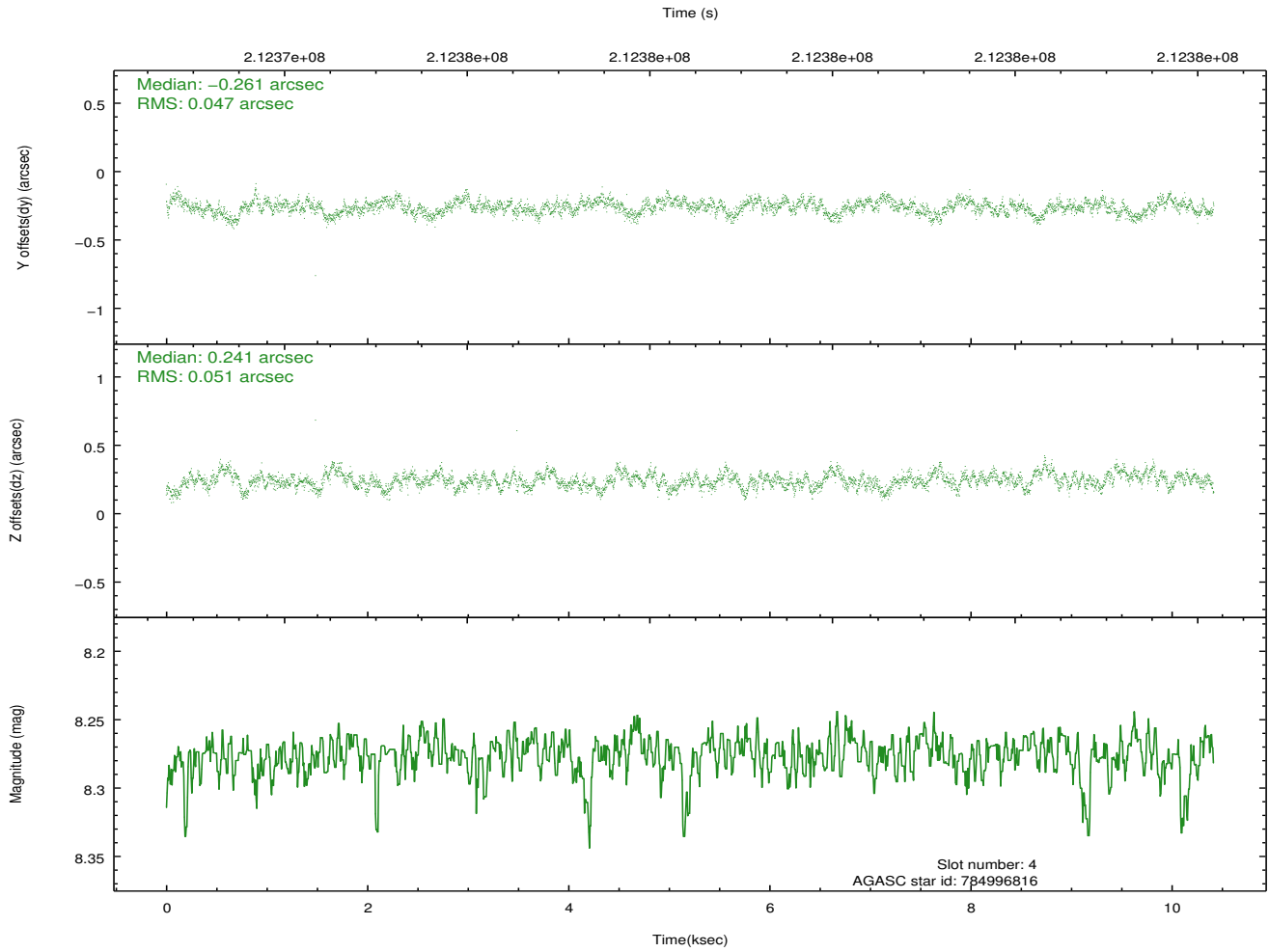
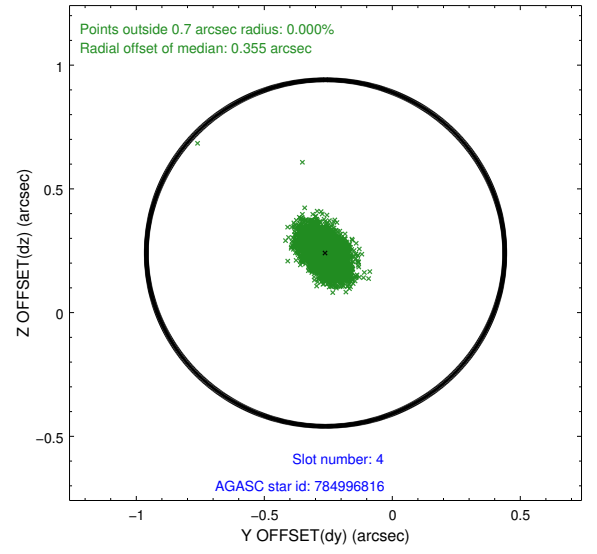
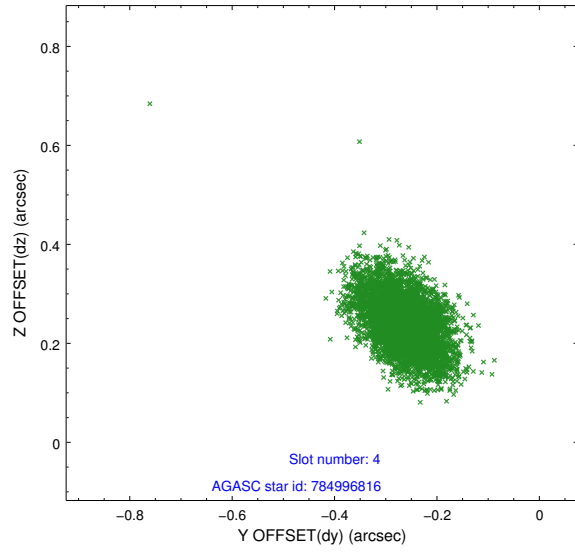
slot	status	id	mag	n_pts	med_dy	med_dz	dr1	dr2	ra	dec	mean_y	mean_z
0	FID	ACIS-I-1	7.24	2542	0.042	-0.020	0.010	0.021	0.000000	0.000000	933.47	-834.98
1	FID	ACIS-I-5	7.23	2542	-0.164	0.058	0.009	0.020	0.000000	0.000000	-1814.52	1062.40
2	FID	ACIS-I-6	7.25	2542	0.030	0.032	0.009	0.017	0.000000	0.000000	398.52	1707.40
3	GUIDE	784994816	9.12	5082	0.034	-0.104	0.087	0.140	116.505488	-19.434301	-295.07	1455.08
4	GUIDE	784996816	8.28	5083	-0.261	0.241	0.072	0.123	117.450793	-18.934282	1006.31	-1990.48
5	GUIDE	785002880	9.42	5081	0.119	0.004	0.102	0.165	116.663117	-19.555310	-804.08	989.45
6	GUIDE	785012920	9.77	5077	0.126	-0.292	0.116	0.189	116.360499	-19.765232	-1402.14	2115.11
7	GUIDE	784494512	9.13	5076	-0.016	0.148	0.099	0.167	117.536315	-18.614165	2101.30	-2453.56

## 2.4 Star Slots

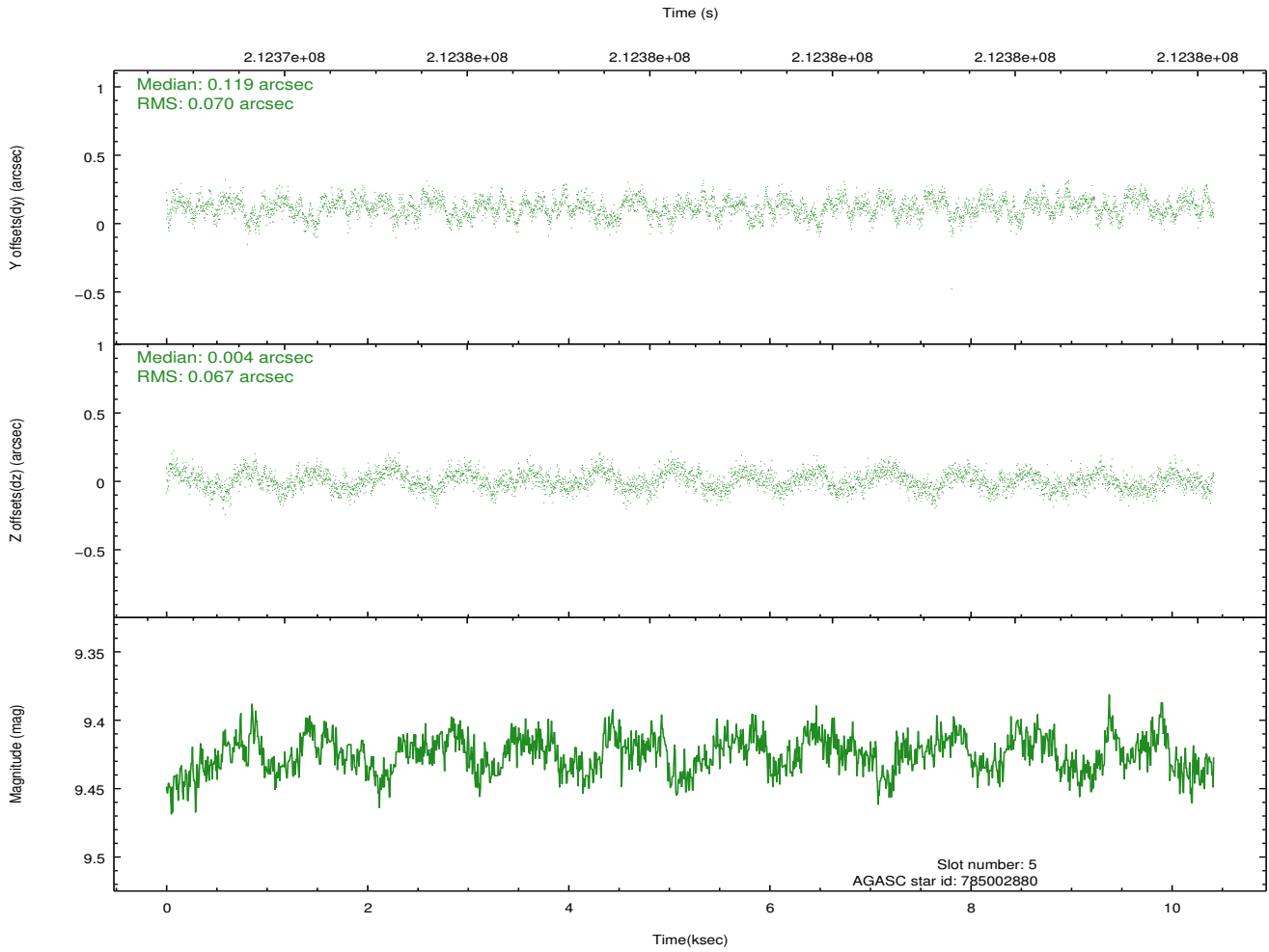
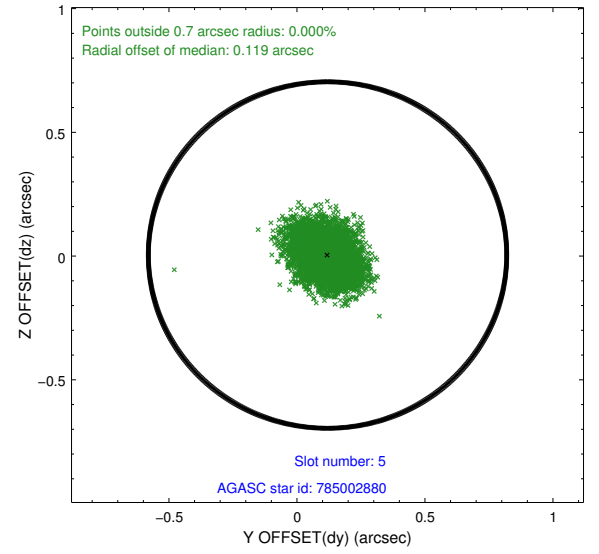
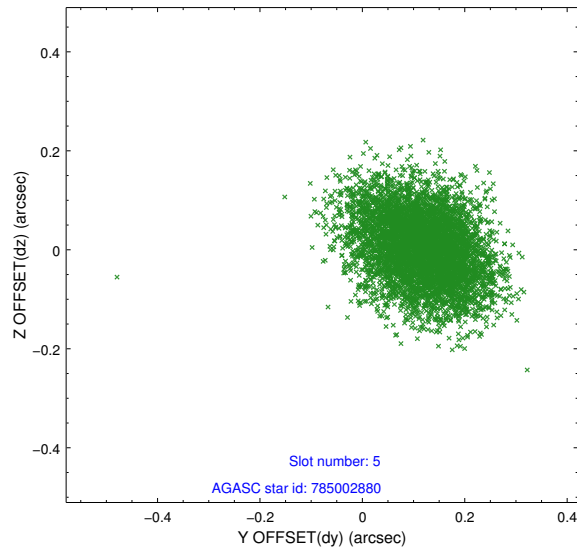
### 2.4.1 Slot 3



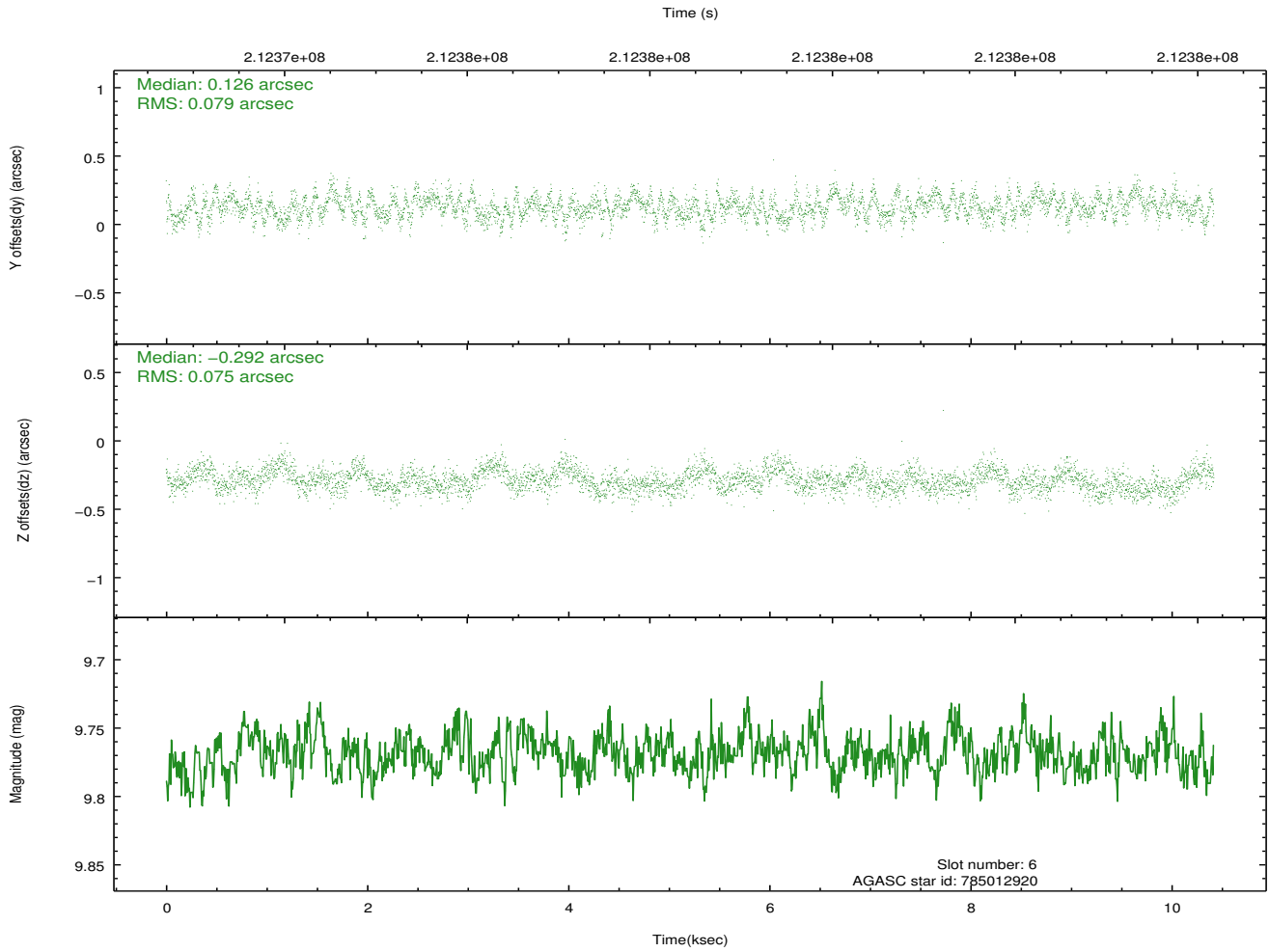
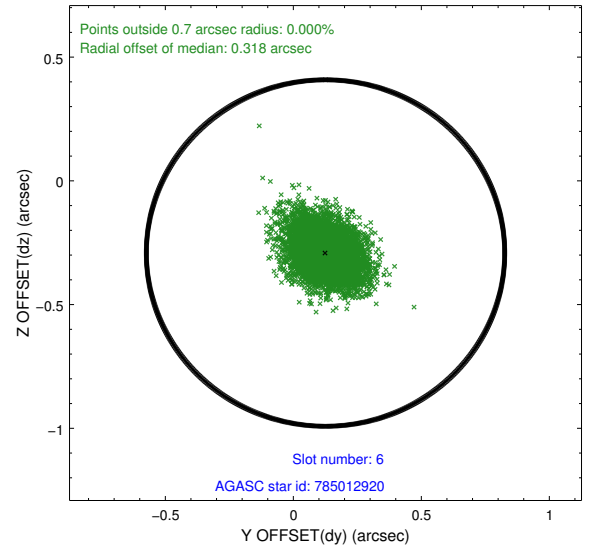
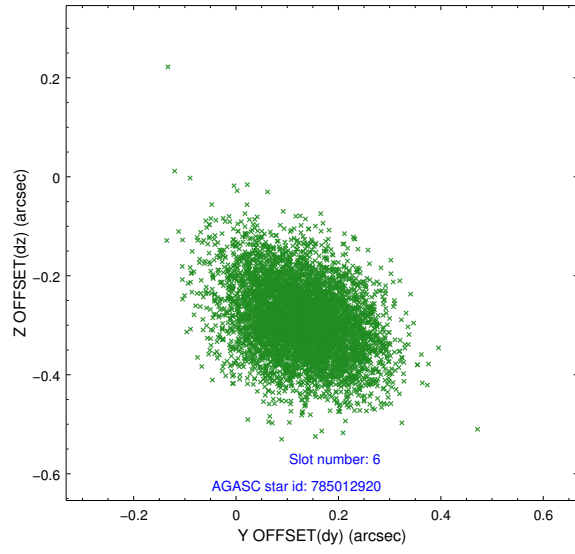
## 2.4.2 Slot 4



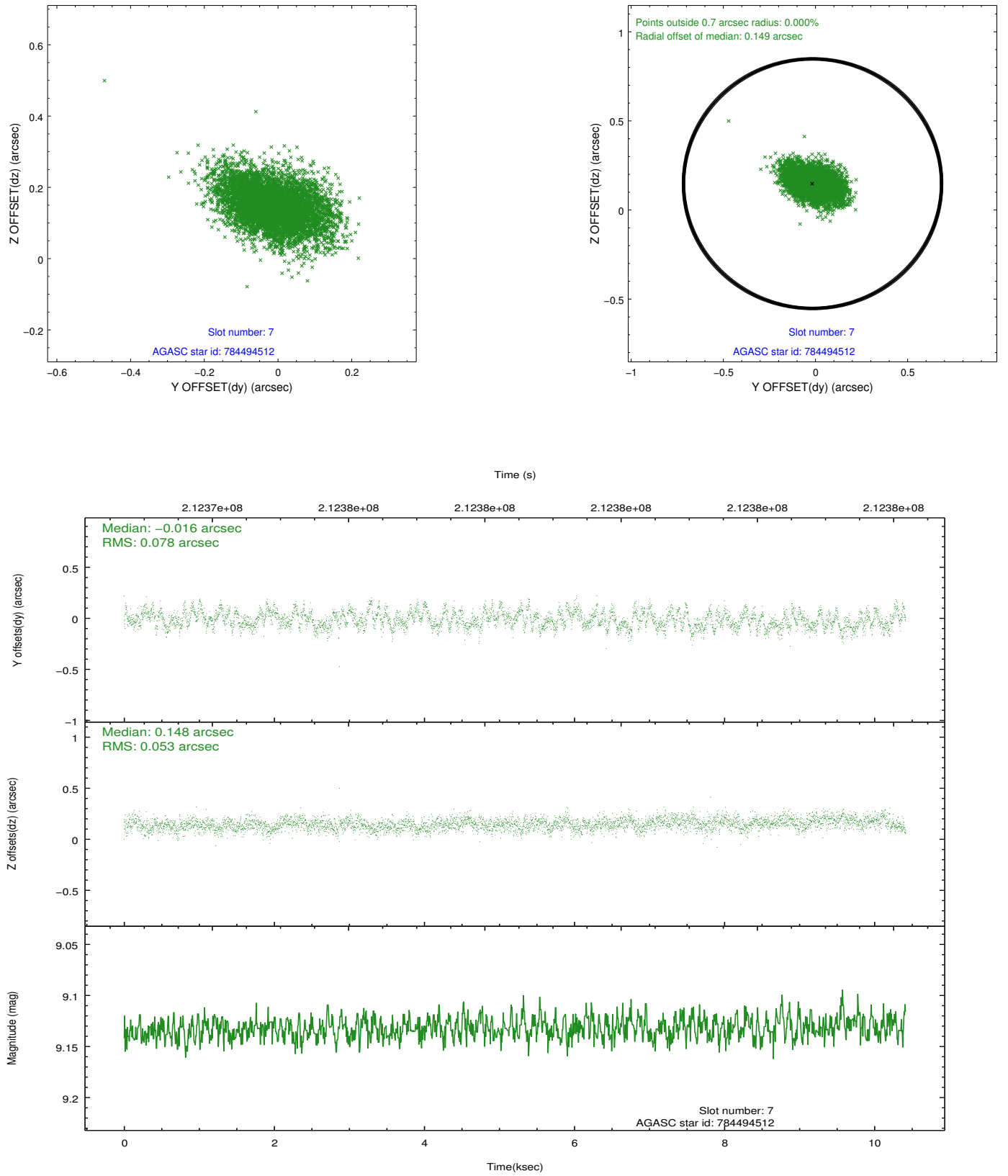
### 2.4.3 Slot 5



## 2.4.4 Slot 6

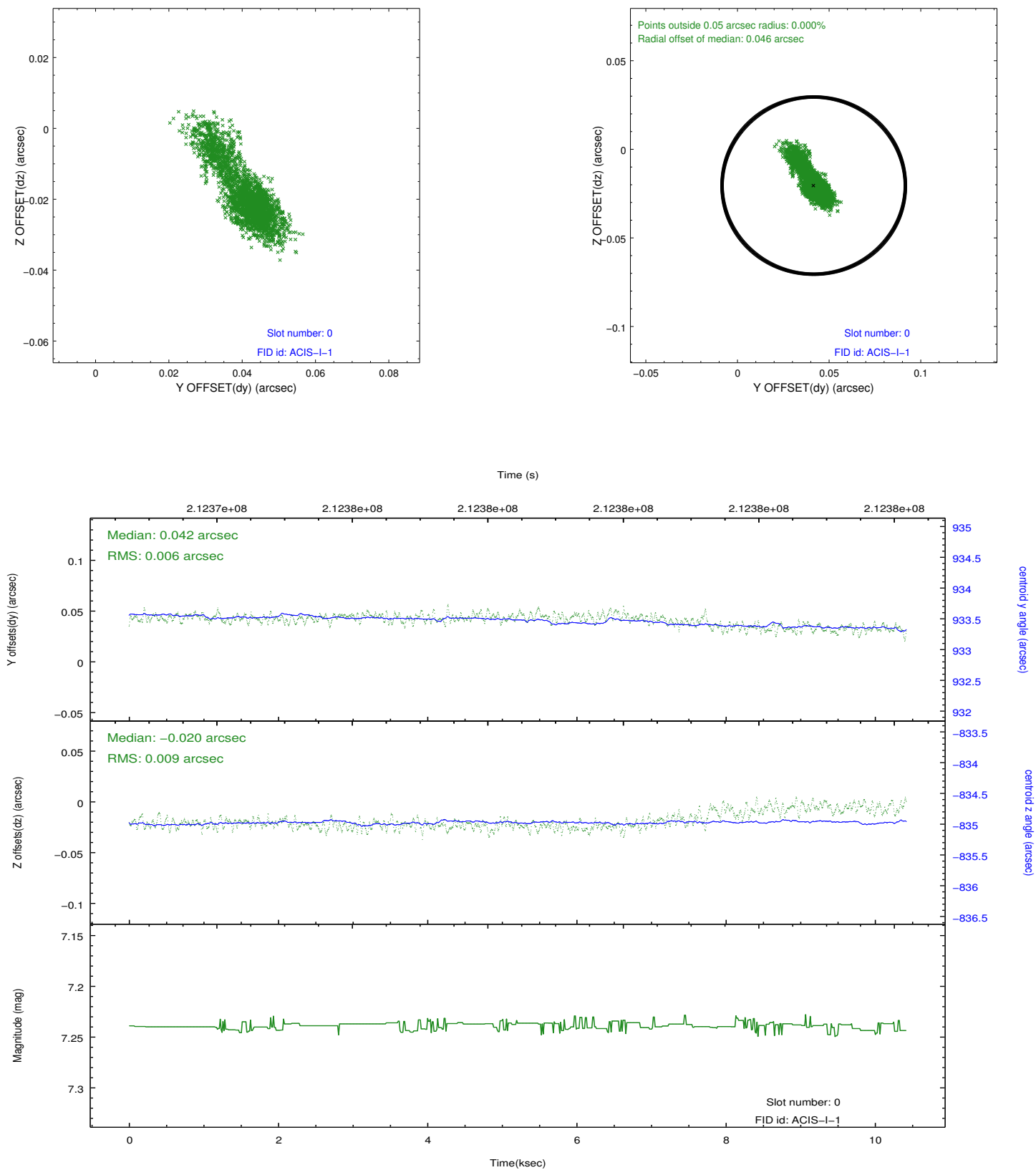


## 2.4.5 Slot 7

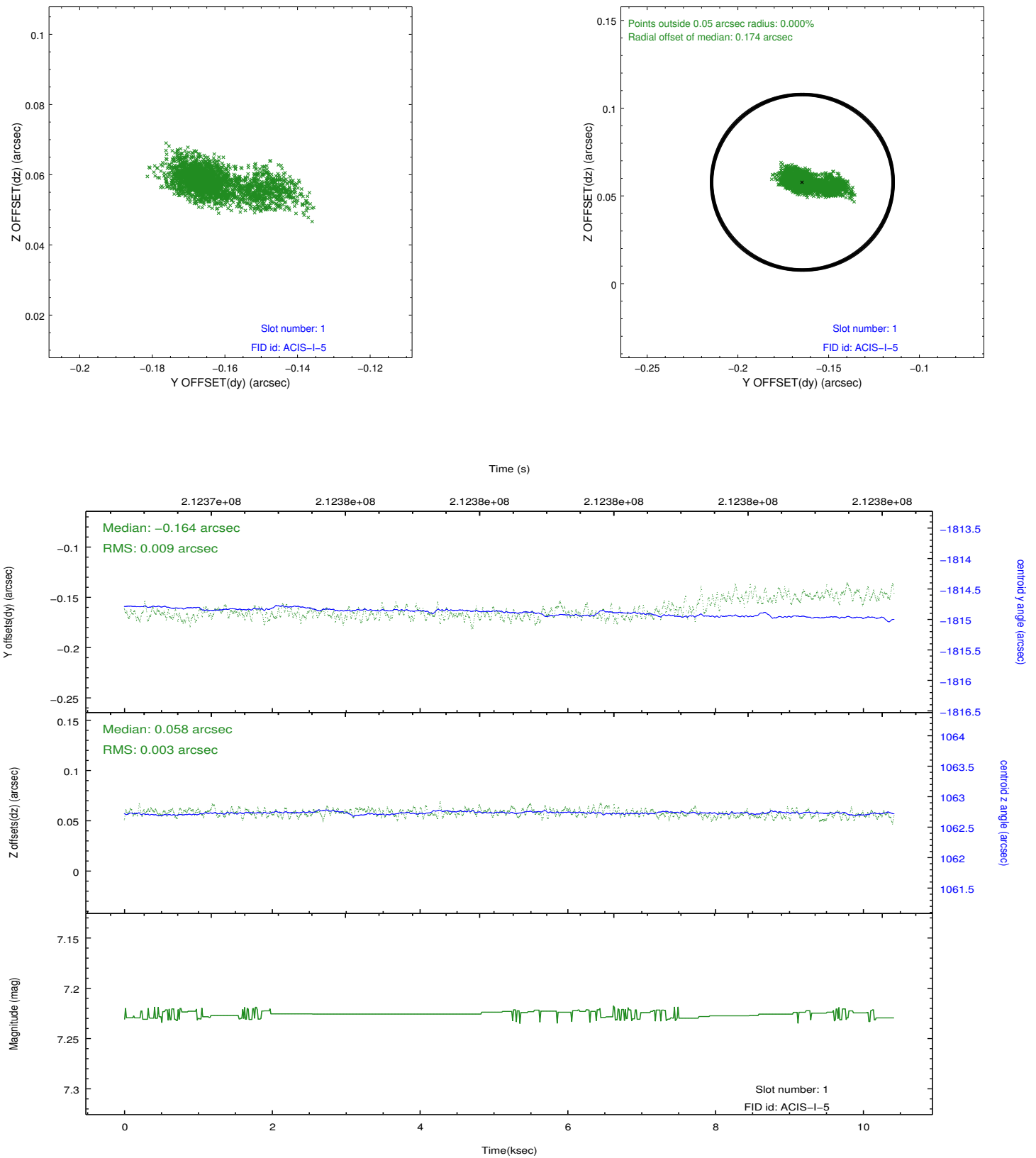


## 2.5 FID Slots

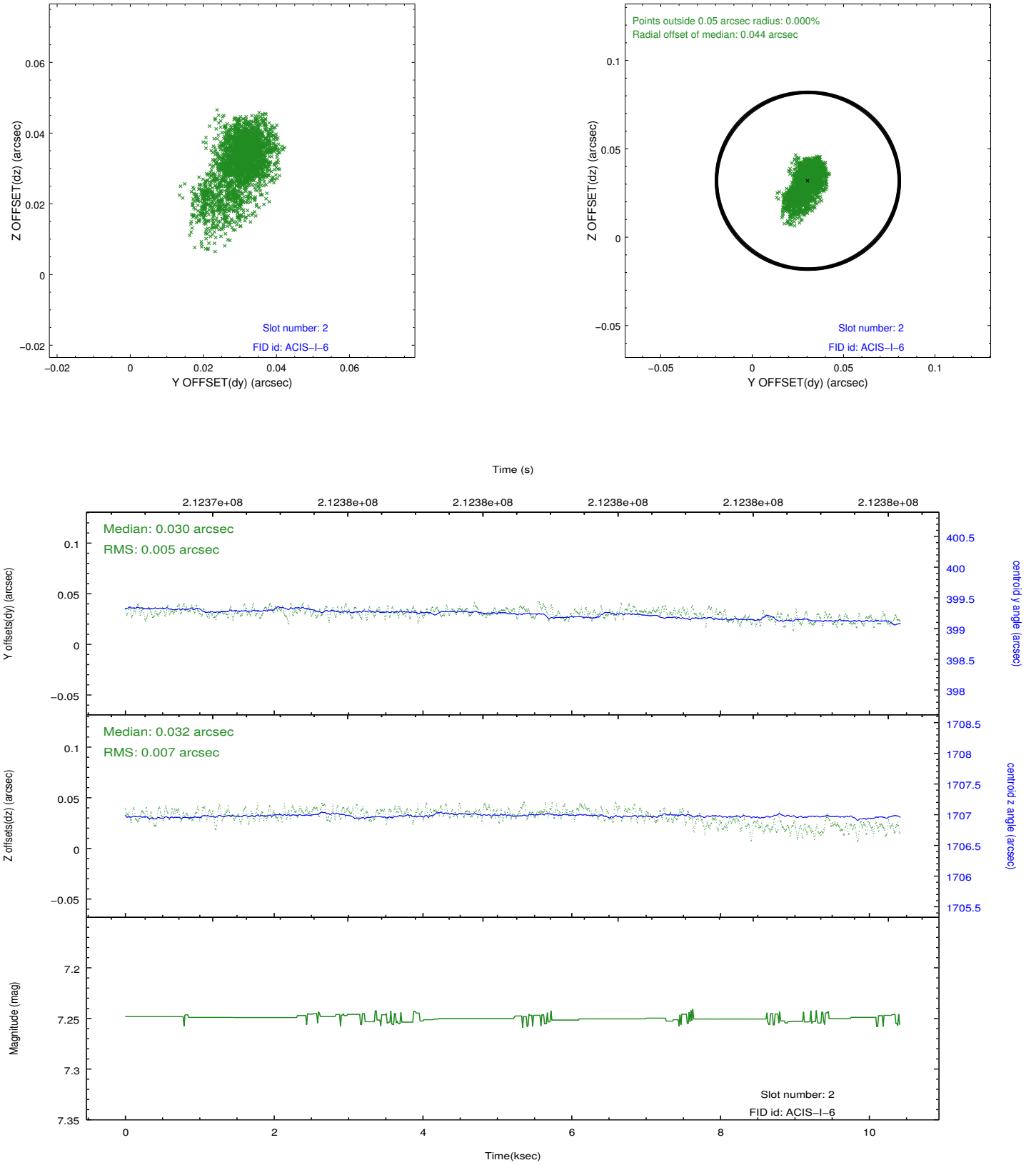
### 2.5.1 Slot 0



## 2.5.2 Slot 1



### 2.5.3 Slot 2



## A Summary

### A.1 Status

V&V Scientist	Beth Sundheim
V&V Date (YYYY-MM-DD)	2012.12.31
V&V Edition	1
V&V Disposition and Status	OK
V&V Charge Time	10.406

### A.2 Comments