

V&V Reference Report

L2 ASCDS Version : 7.6.7.1

Observation 6103 - L2 Version 001
Chandra X-Ray Center

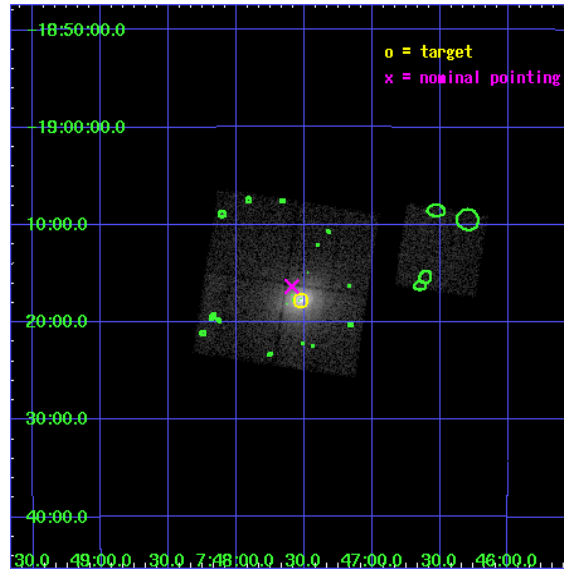
L2 Processing Date : Apr 17 2006

Contents

1	Front	2
2	OBI	3
2.1	OBI	3
2.1.1	Images	3
2.1.2	Bias	3
2.1.3	Parameters	4
2.1.4	Events	4
2.2	Compared Parameters	5
2.3	Aspect	6
2.4	Star Slots	9
2.4.1	Slot 3	9
2.4.2	Slot 4	10
2.4.3	Slot 5	11
2.4.4	Slot 6	12
2.4.5	Slot 7	13
2.5	FID Slots	14
2.5.1	Slot 0	14
2.5.2	Slot 1	15
2.5.3	Slot 2	16
3	Point Sources	17
A	Summary	18
A.1	Status	18
A.2	Comments	18

1 Front

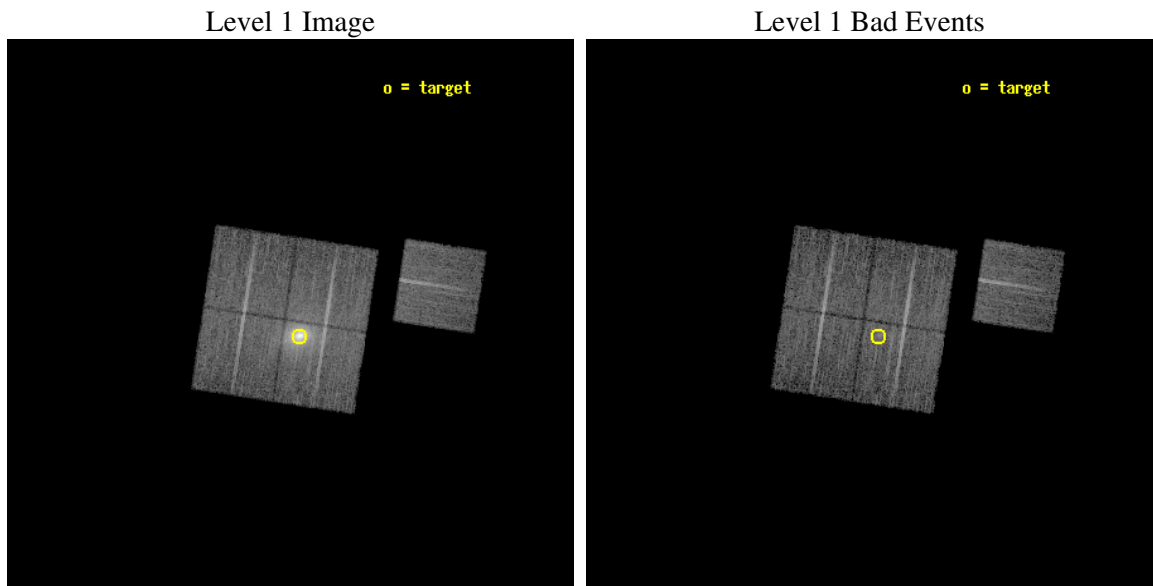
seq_num	800551
obs_id	6103
title	Probing dark energy using the X-ray gas mass fraction in dynamically relaxed galaxy clusters
observer	Dr Steven Allen
object	PKS0745-191
dtcycle	0
cycle	P
ra_targ	116.882083
dec_targ	-19.29575
ra_nom	116.89813772037
dec_nom	-19.272378761109
roll_nom	98.751944988016
revision	2
ontime	10406.618049473
livetime	10270.647923415
ontime0	10409.759019732
ontime1	10412.899979979
ontime2	10412.899979979
ontime3	10406.618049473
ontime6	10406.617969722
l2events	87563



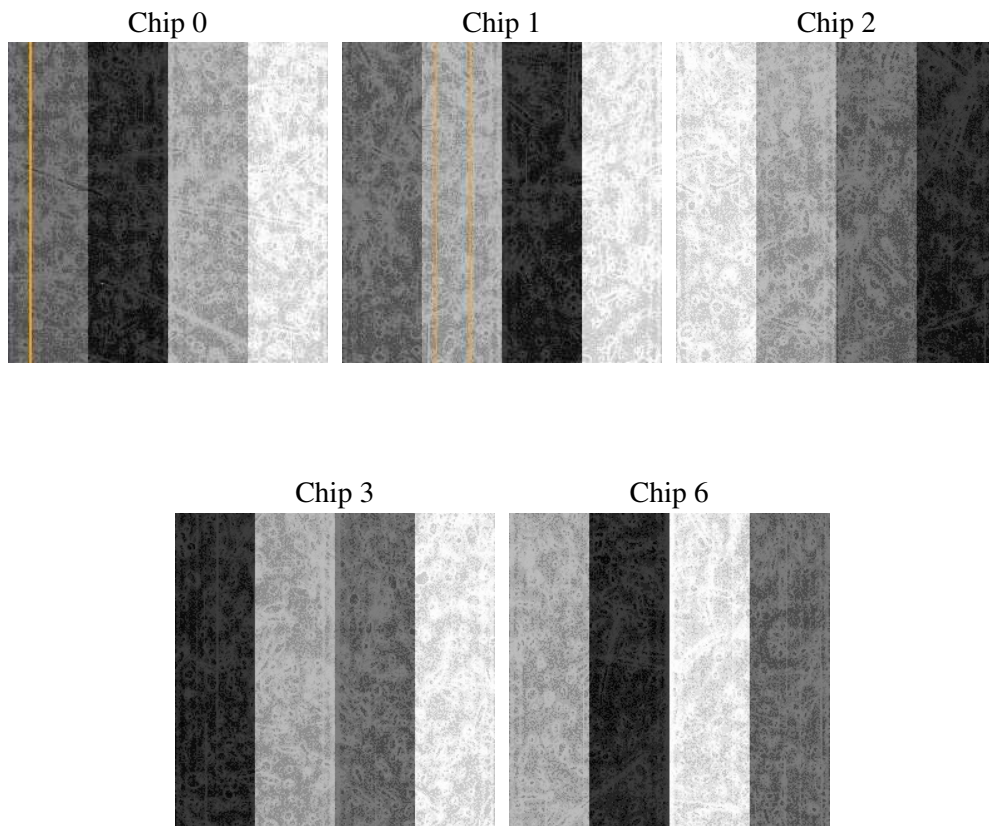
2 OBI

2.1 OBI

2.1.1 Images



2.1.2 Bias



2.1.3 Parameters

obi_num	0
ascdsver	7.6.7.1
caldbver	3.2.1
date	2006-04-17T11:48:50
revision	2

sched_exp_time	10279.000000
ontime	10980.942790955
ontime0	10984.083731294
ontime1	10987.22469154
ontime2	10987.224721462
ontime3	10980.942790955
ontime6	10980.942711204
l1events	402776

2.1.4 Events

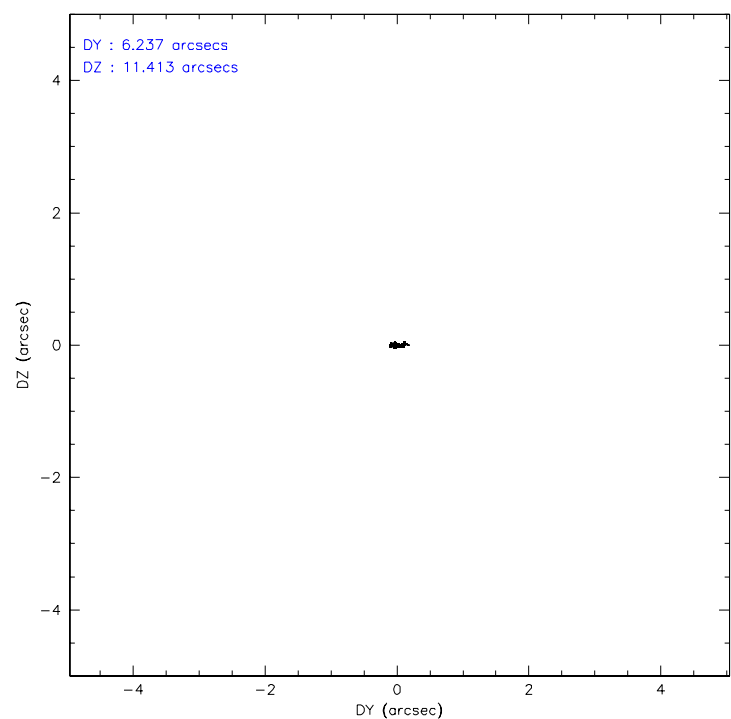
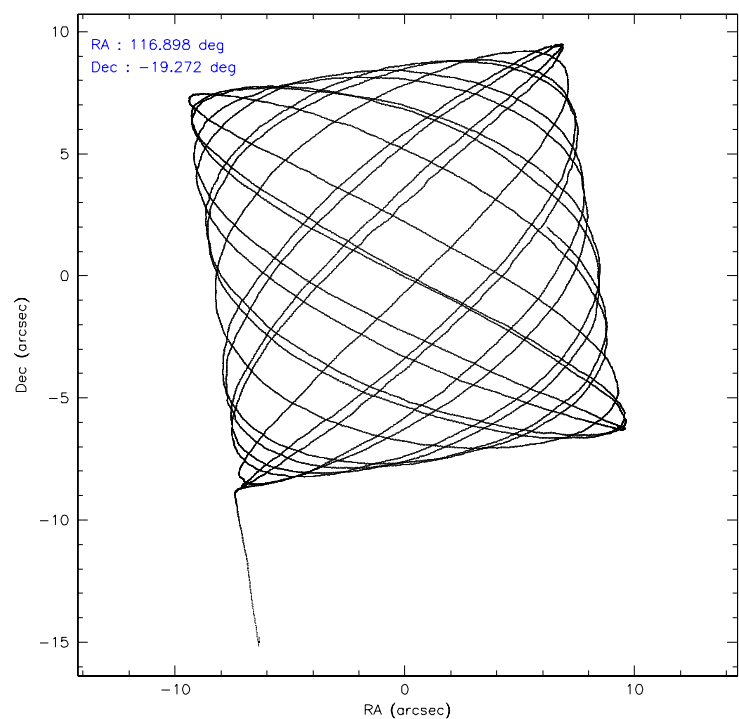
	ccd 0	ccd 1	ccd 2	ccd 3	ccd 6
level 1 events	67703	69153	76093	123048	66779
rejected events	60198	57190	65488	65162	60191
rejected %	88%	82%	86%	52%	90%

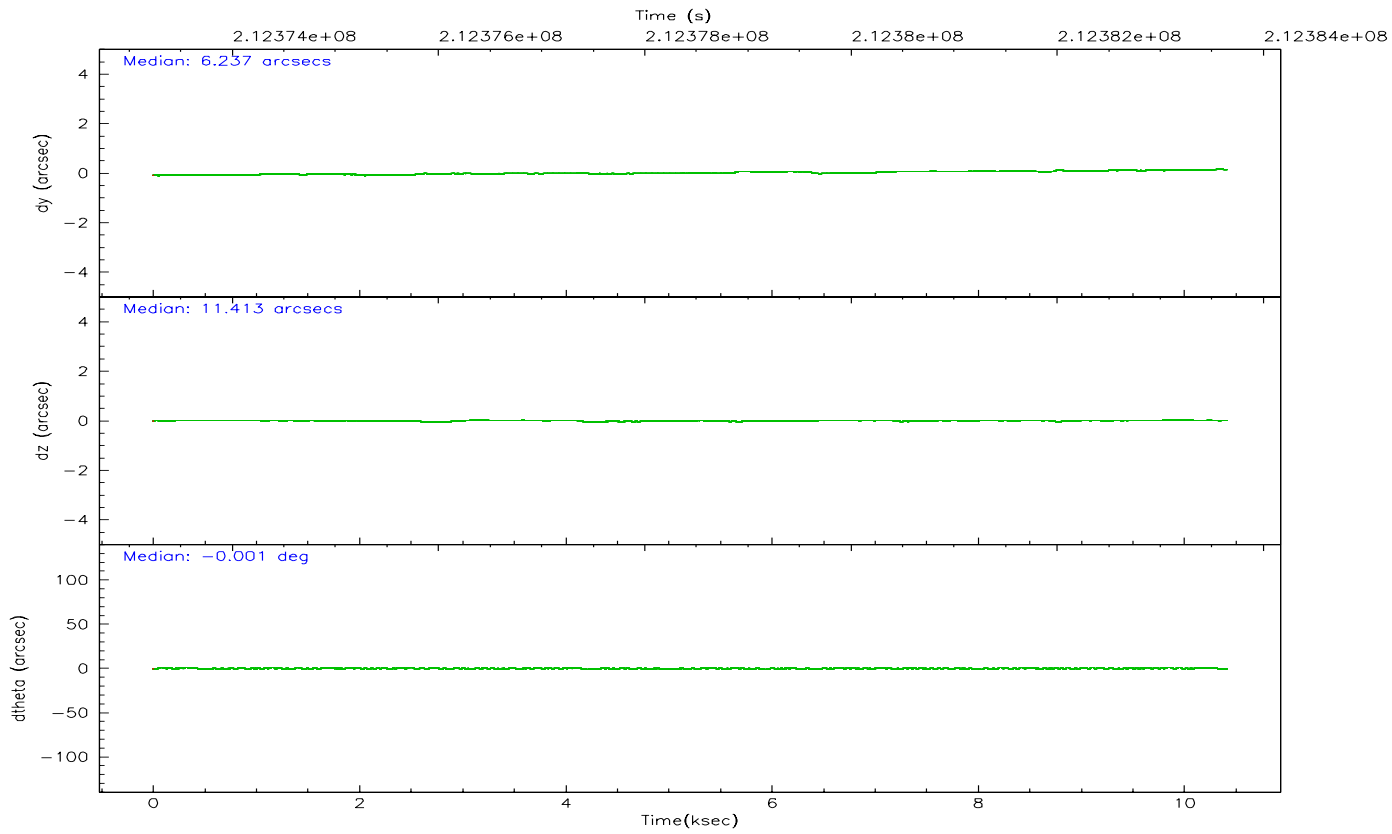
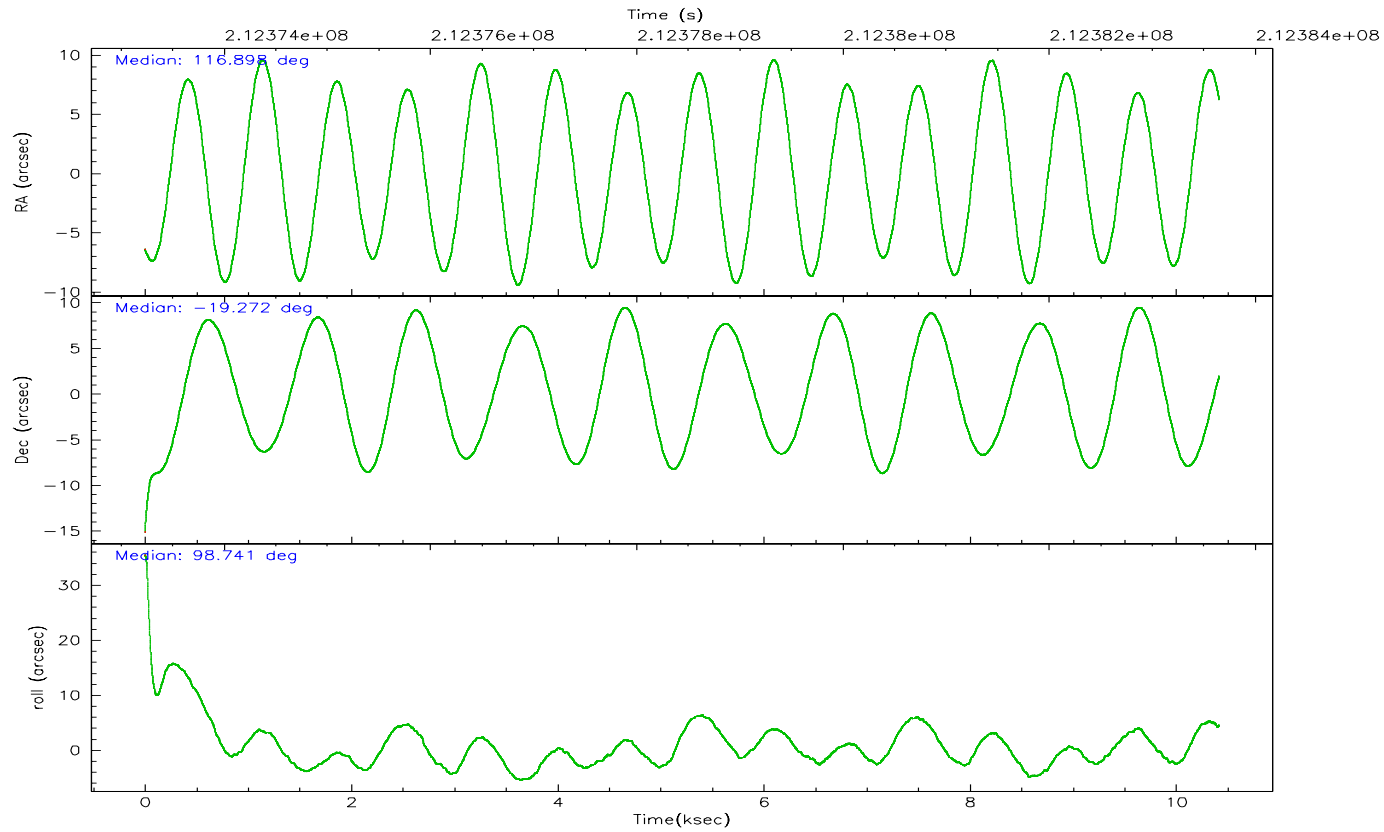
	ccd 0	ccd 1	ccd 2	ccd 3	ccd 6
grade 0 events	3290	6588	5881	44187	2411
	4%	9%	7%	35%	3%
grade 1 events	47	48	60	327	25
	0%	0%	0%	0%	0%
grade 2 events	1659	2168	2086	7022	1419
	2%	3%	2%	5%	2%
grade 3 events	843	1052	861	2563	802
	1%	1%	1%	2%	1%
grade 4 events	737	997	869	2555	840
	1%	1%	1%	2%	1%
grade 5 events	2398	2655	2307	2822	2694
	3%	3%	3%	2%	4%
grade 6 events	1367	1640	1359	2847	1465
	2%	2%	1%	2%	2%
grade 7 events	57362	54005	62670	60725	57123
	84%	78%	82%	49%	85%

2.2 Compared Parameters

Parameter	Planned	Actual	Parameter	Planned	Actual
Instrument	ACIS	ACIS	Obspar format version number	6	6
Detector	ACIS-01236	ACIS-01236	Obspar file type	PREDICTED	ACTUAL
Grating	NONE	NONE	Obspar update status	NONE	UPDATED
Data mode	VFAINT	VFAINT	On-chip summing requested	N	N
Observation mode	POINTING	POINTING	Subarray requested	NONE	NONE
Pointing RA	116.916381	116.898137720369	Alternating exposures requested	N	N
Pointing Dec	-19.293577	-19.27237876110892	Primary exposure time	0.000000	3.1
Pointing Roll	98.549260	98.75194498801572			
SIM focus pos (mm)	-0.782348	-0.7809083437167272			
SIM defocus (mm)	0	0.001439871863259334			
SIM translation stage pos (mm)	-233.592463	-233.5874344608287			
SIM translation stage offset (mm)	0	-0.005018542100998502			
Observation start time	212373367.184000	212372111.56579			
Observation start date	2004-09-24T00:35:03	2004-09-24T00:15:11			
Observation end time	212383646.184000	212384659.61635			
Observation end date	2004-09-24T03:26:22	2004-09-24T03:44:19			
Read mode	TIMED	TIMED			

2.3 Aspect



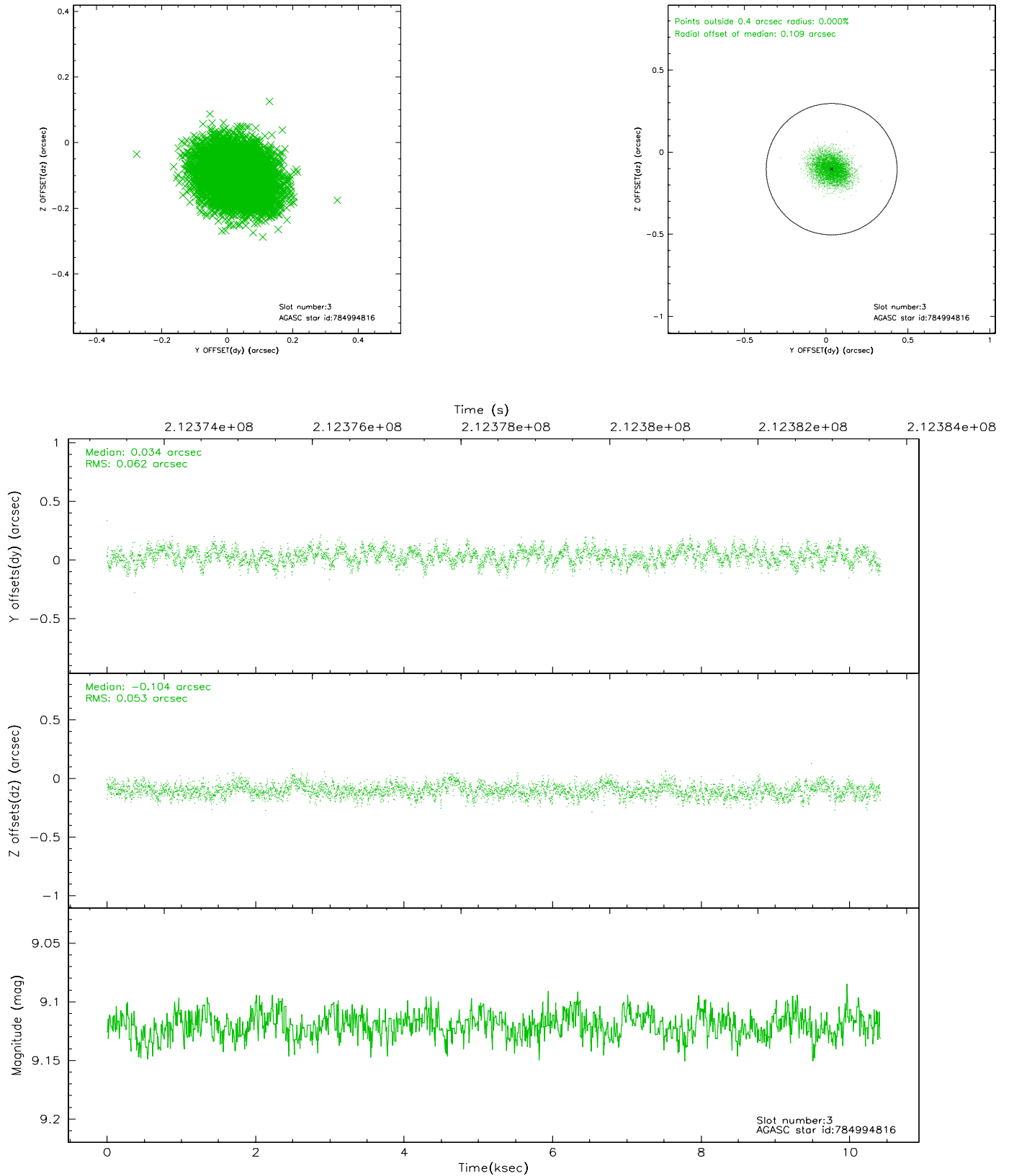


Slot Statistics

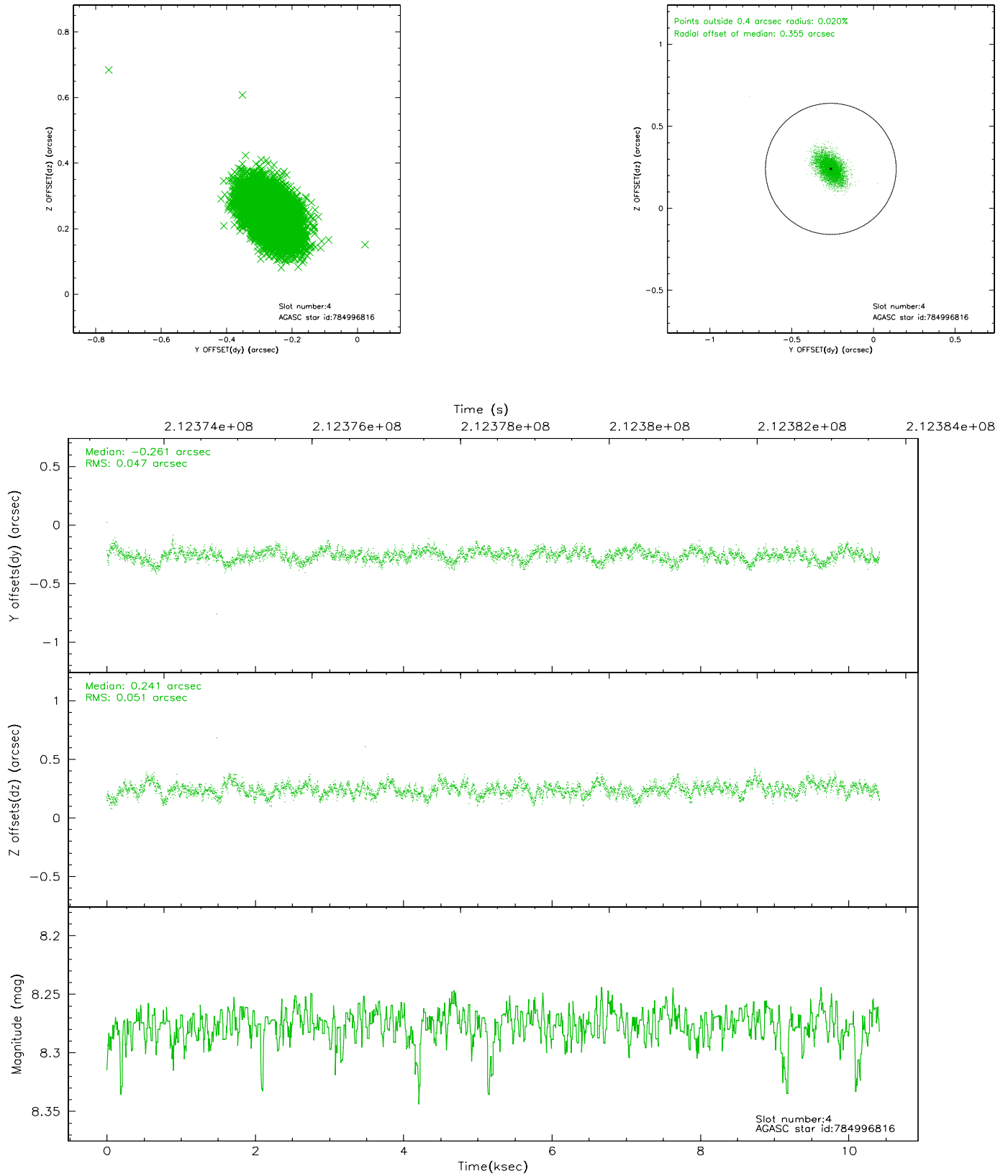
slot	status	id	mag	n_pts	med_dy	med_dz	dr1	dr2	ra	dec	mean_y	mean_z
0	FID	ACIS-I-1	7.24	2542	0.022	0.007	0.009	0.020	0.000000	0.000000	933.45	-834.93
1	FID	ACIS-I-5	7.23	2542	-0.134	0.050	0.008	0.020	0.000000	0.000000	-1814.48	1062.41
2	FID	ACIS-I-6	7.25	2542	0.020	0.013	0.009	0.017	0.000000	0.000000	398.51	1707.39
3	GUIDE	784994816	9.12	5082	0.034	-0.104	0.087	0.140	116.505488	-19.434301	-295.07	1455.08
4	GUIDE	784996816	8.28	5083	-0.261	0.241	0.072	0.123	117.450793	-18.934282	1006.31	-1990.48
5	GUIDE	785002880	9.42	5081	0.119	0.004	0.102	0.166	116.663117	-19.555310	-804.08	989.45
6	GUIDE	785012920	9.77	5077	0.126	-0.292	0.116	0.189	116.360499	-19.765232	-1402.14	2115.11
7	GUIDE	784494512	9.13	5076	-0.016	0.148	0.099	0.167	117.536315	-18.614165	2101.30	-2453.56

2.4 Star Slots

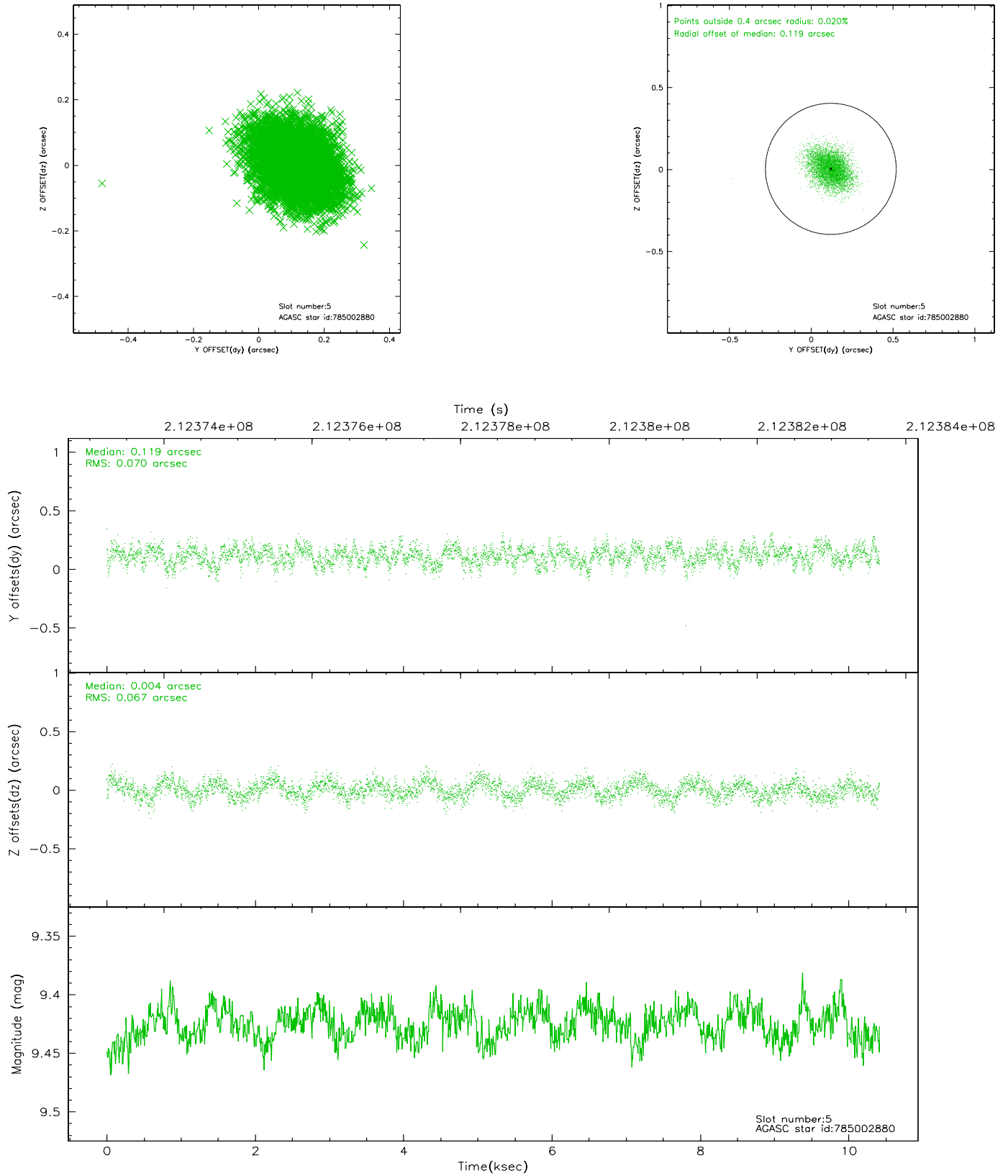
2.4.1 Slot 3



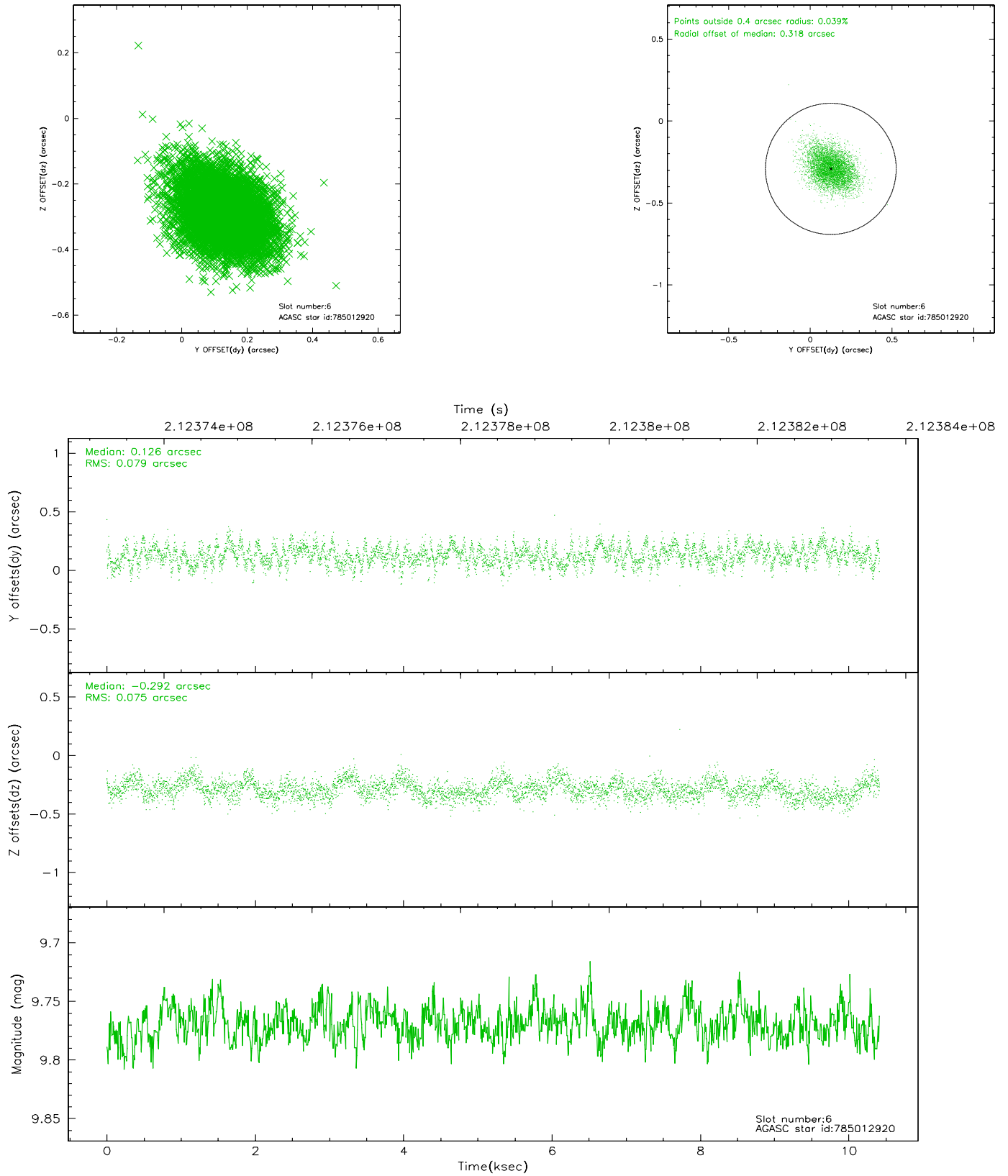
2.4.2 Slot 4



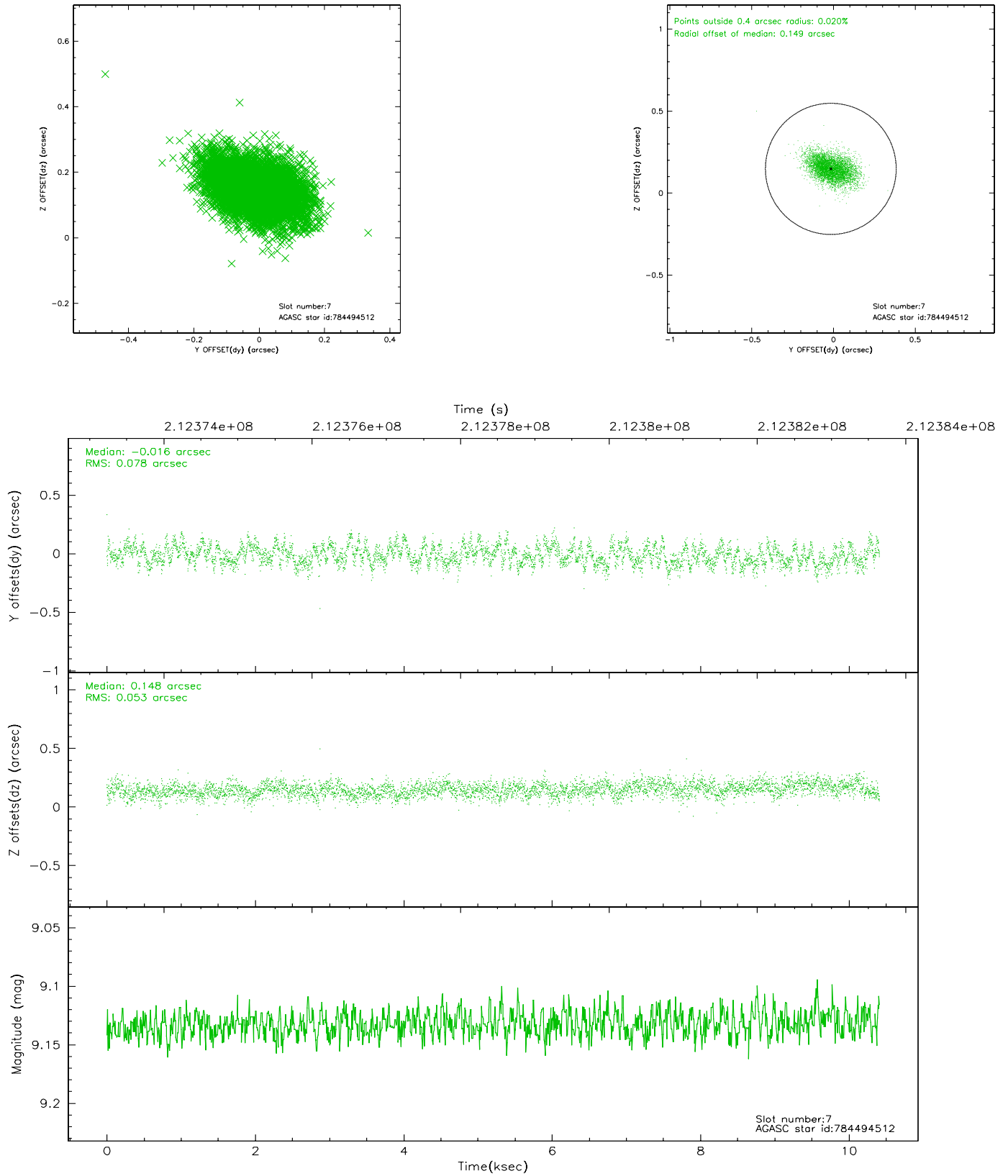
2.4.3 Slot 5



2.4.4 Slot 6

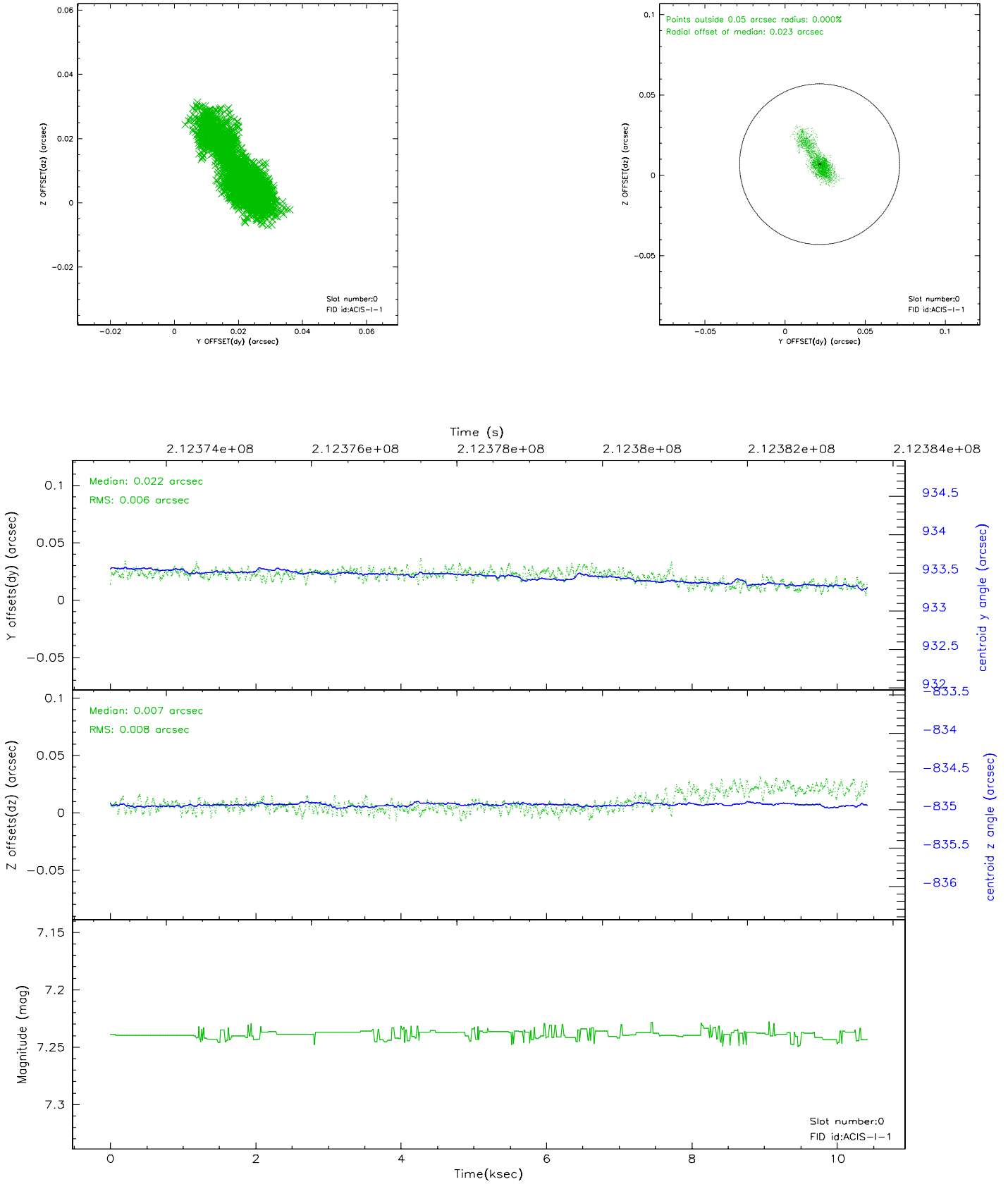


2.4.5 Slot 7

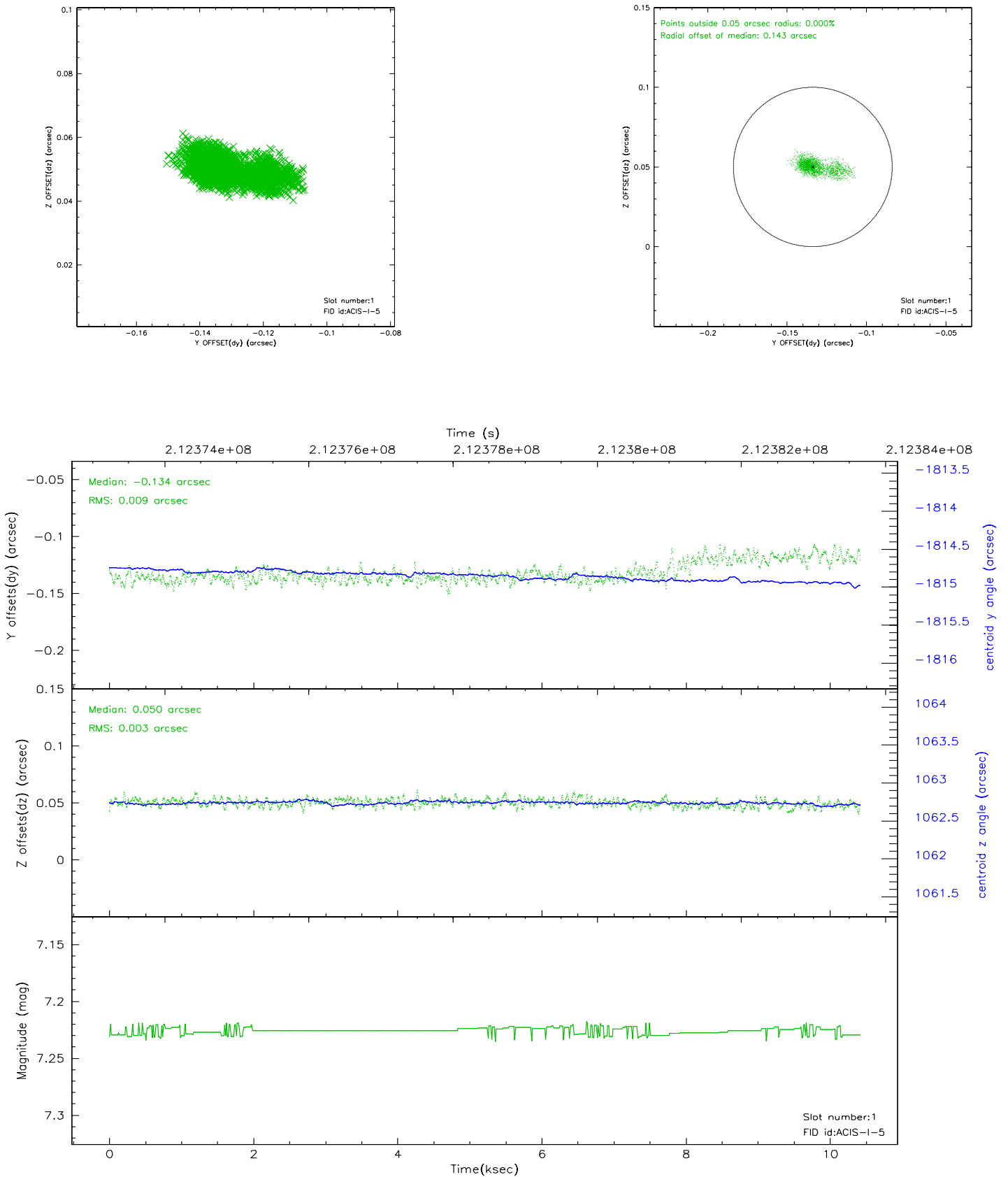


2.5 FID Slots

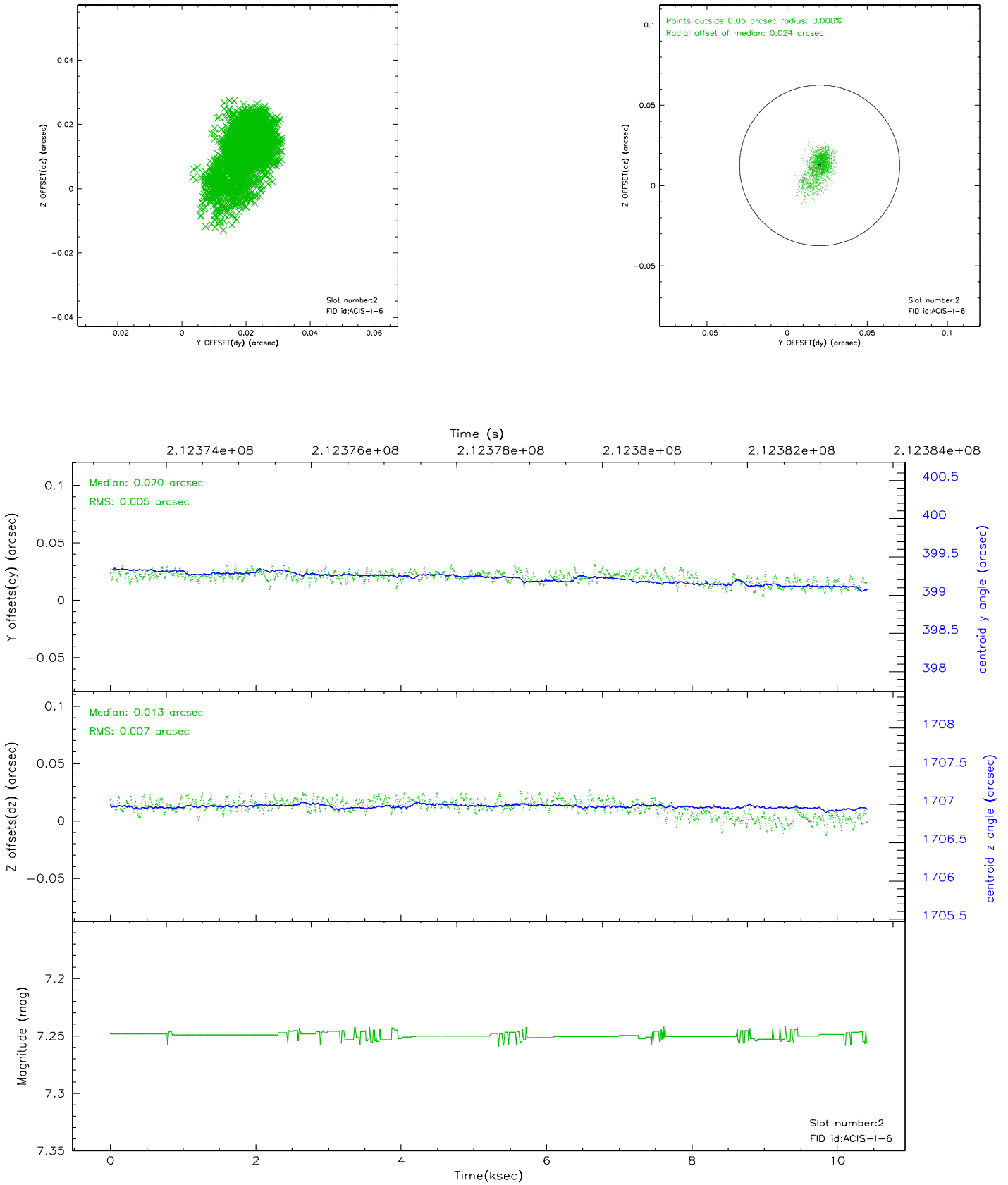
2.5.1 Slot 0



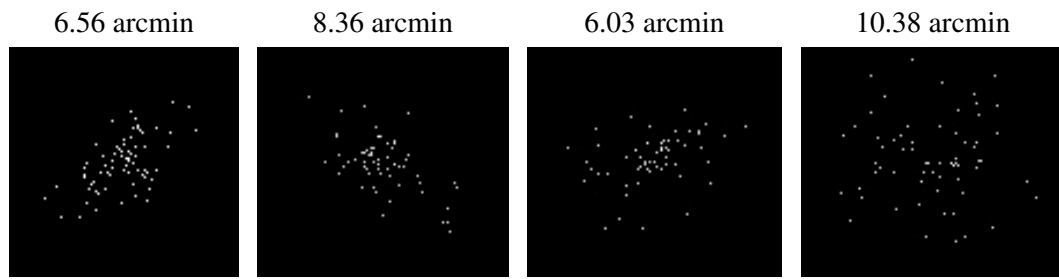
2.5.2 Slot 1



2.5.3 Slot 2



3 Point Sources



A Summary

A.1 Status

V&V Scientist	Beth Sundheim
V&V Date (YYYY-MM-DD)	2006.04.17
V&V Edition	1
V&V Disposition and Status	OK
V&V Charge Time	10.406

A.2 Comments