

V&V Reference Report

L2 ASCDS Version : 7.6.7.1

Observation 6101 - L2 Version 003
Chandra X-Ray Center

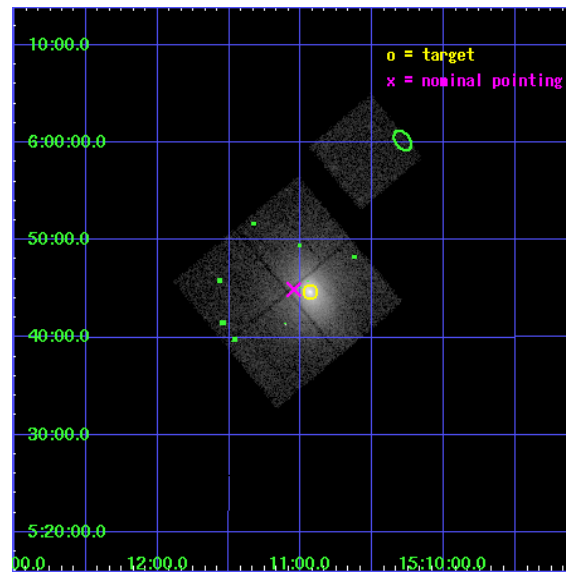
L2 Processing Date : Apr 10 2006

Contents

1	Front	2
2	OBI	3
2.1	OBI	3
2.1.1	Images	3
2.1.2	Bias	3
2.1.3	Parameters	4
2.1.4	Events	4
2.2	Compared Parameters	5
2.3	Aspect	6
2.4	Star Slots	9
2.4.1	Slot 3	9
2.4.2	Slot 4	10
2.4.3	Slot 6	11
2.4.4	Slot 7	12
2.5	FID Slots	13
2.5.1	Slot 0	13
2.5.2	Slot 1	14
2.5.3	Slot 2	15
3	Point Sources	16
A	Summary	17
A.1	Status	17
A.2	Comments	17

1 Front

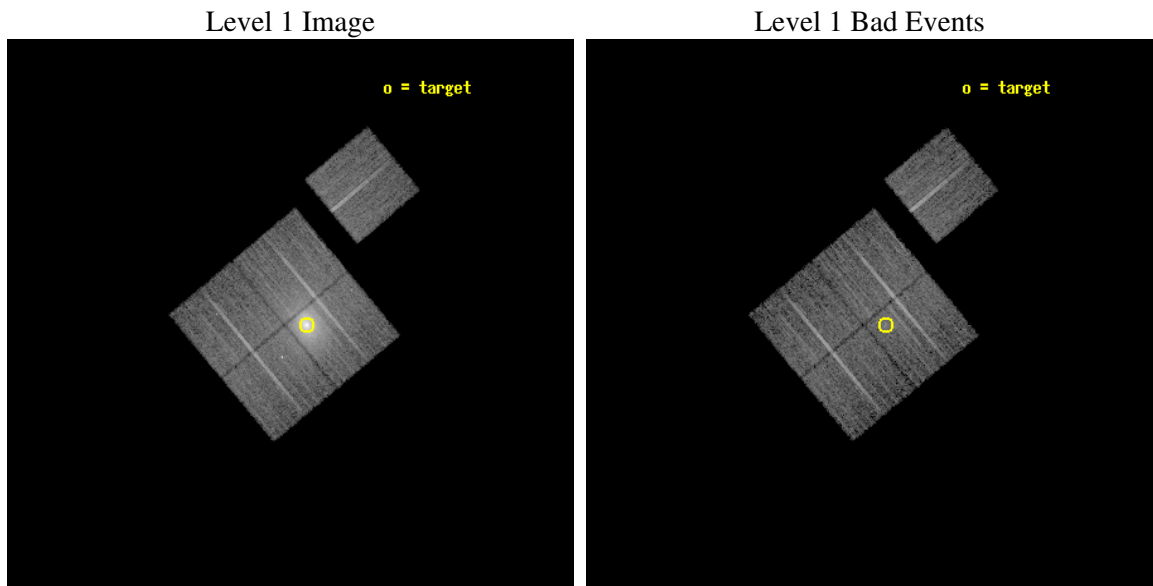
seq_num	800549
obs_id	6101
title	Probing dark energy using the X-ray gas mass fraction in dynamically relaxed galaxy clusters
observer	Dr Steven Allen
object	Abell 2029
dtcycle	0
cycle	P
ra_targ	227.734167
dec_targ	5.744583
ra_nom	227.76196531264
dec_nom	5.7487251238759
roll_nom	50.15621785559
revision	3
ontime	10050.199980676
livetime	9918.8867190791
ontime0	10047.059010446
ontime1	10050.199980676
ontime2	10050.199980676
ontime3	10050.199980676
ontime6	10047.058990508
l2events	125217



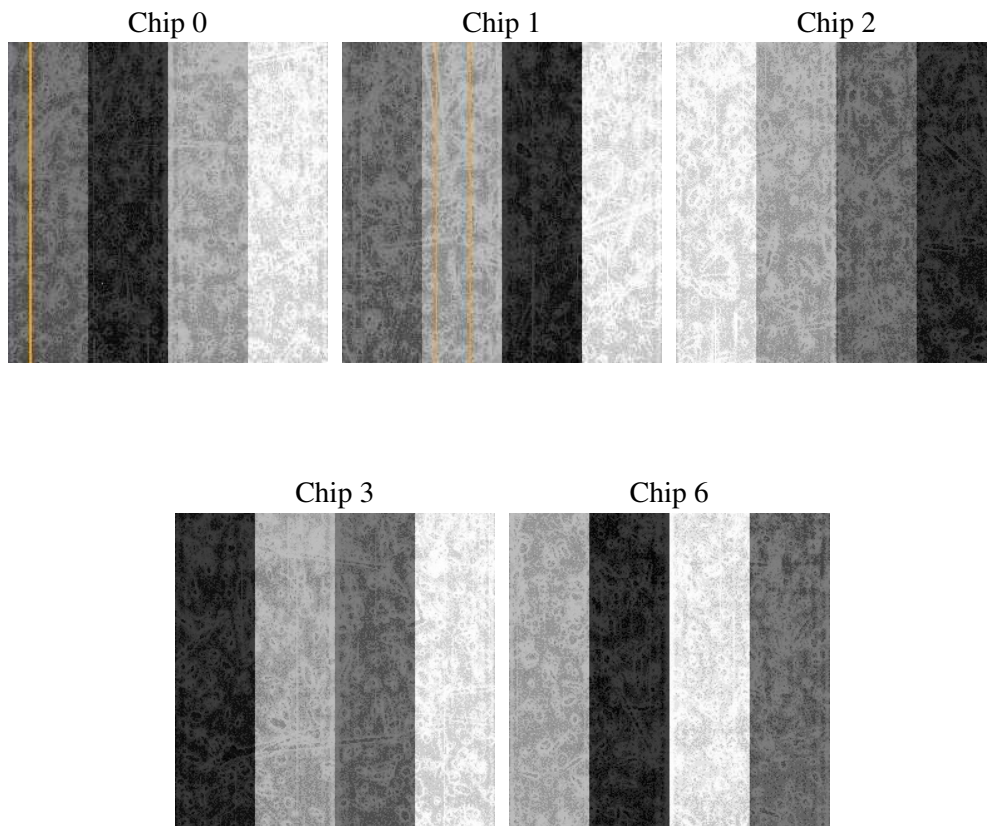
2 OBI

2.1 OBI

2.1.1 Images



2.1.2 Bias



2.1.3 Parameters

obi_num	1
ascdsver	7.6.7.1
caldsver	3.2.1
date	2006-04-10T13:33:54
revision	3

sched_exp_time	10000.000000
ontime	10054.34612295
ontime0	10051.205172628
ontime1	10054.346142858
ontime2	10054.346142858
ontime3	10054.34612295
ontime6	10051.20515269
l1events	429872

2.1.4 Events

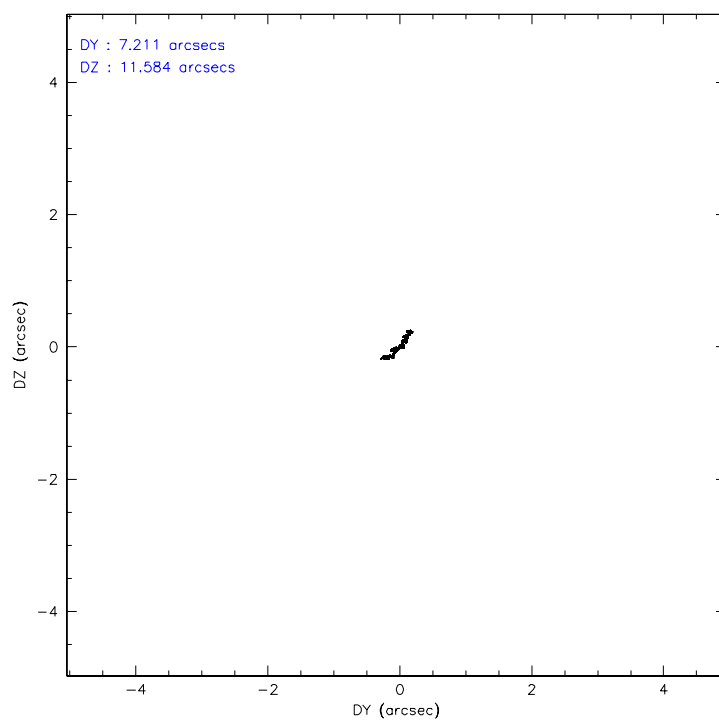
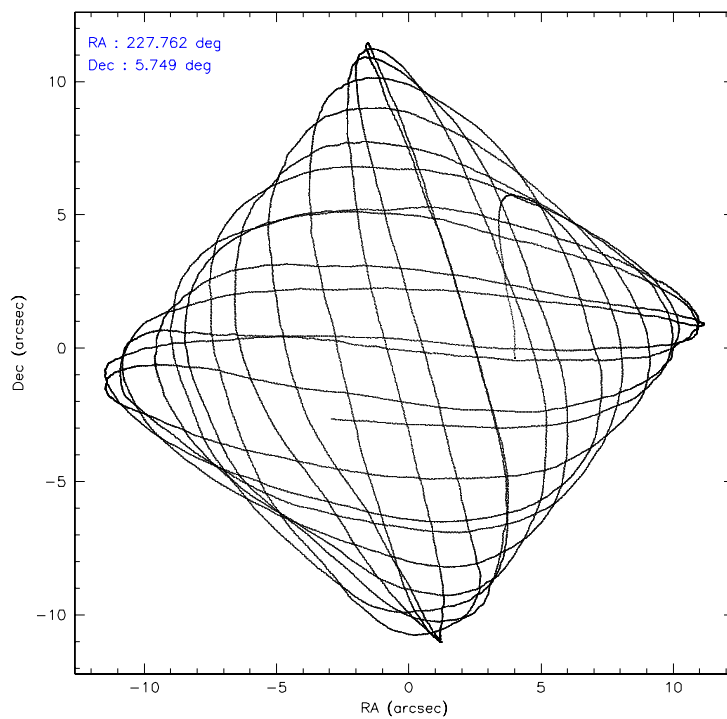
	ccd 0	ccd 1	ccd 2	ccd 3	ccd 6
level 1 events	66908	72221	83837	140147	66759
rejected events	56232	54716	63857	61956	59197
rejected %	84%	75%	76%	44%	88%

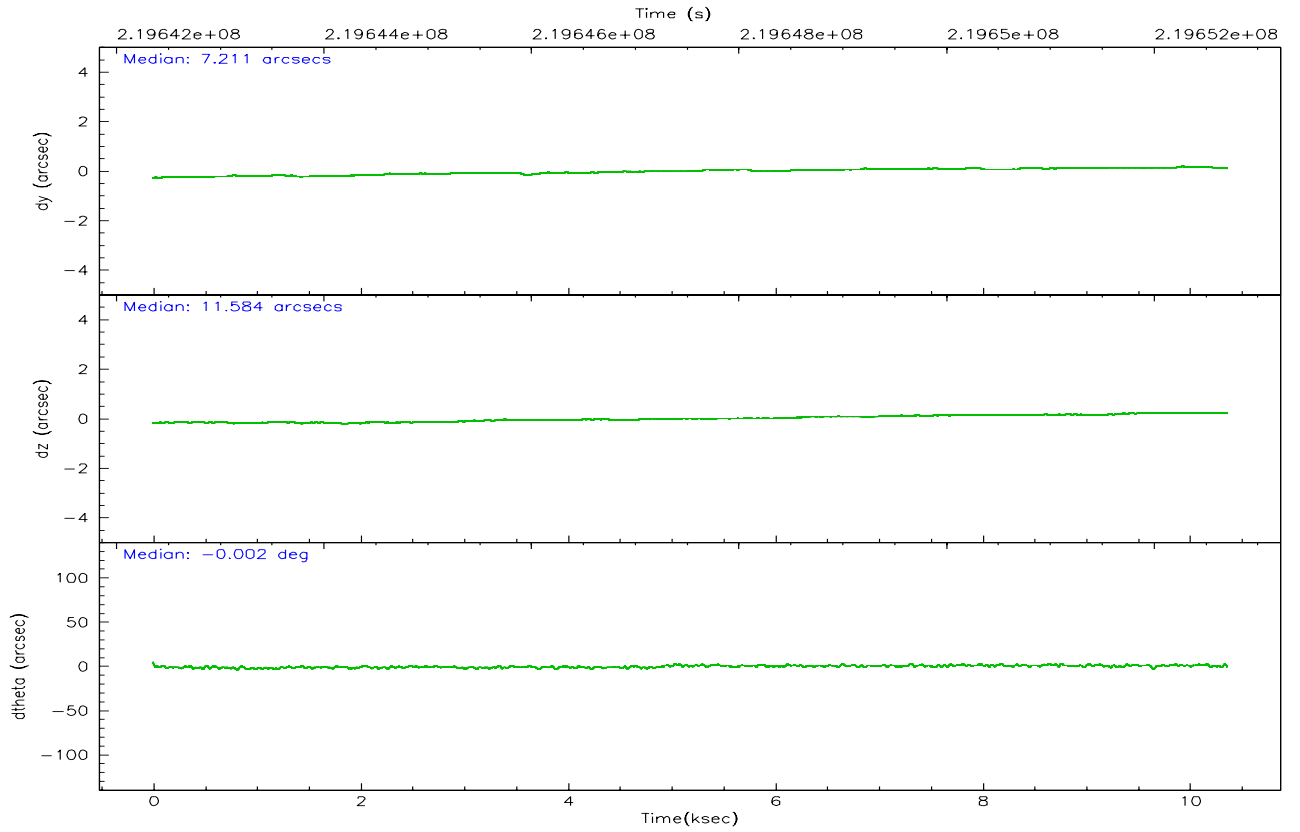
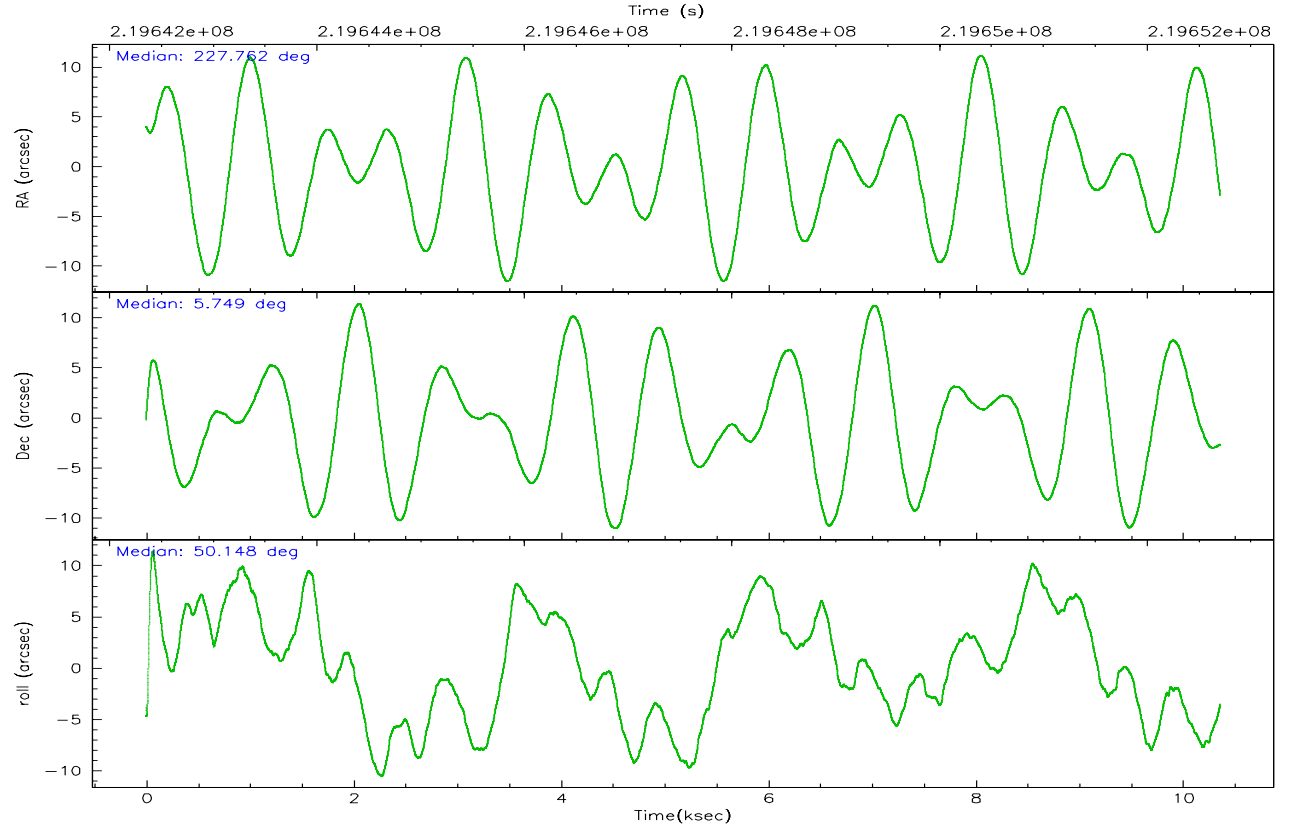
	ccd 0	ccd 1	ccd 2	ccd 3	ccd 6
grade 0 events	5603	10958	13530	61234	3125
	8%	15%	16%	43%	4%
grade 1 events	49	60	90	412	32
	0%	0%	0%	0%	0%
grade 2 events	2013	2612	2721	8309	1515
	3%	3%	3%	5%	2%
grade 3 events	896	1105	1160	2797	780
	1%	1%	1%	1%	1%
grade 4 events	832	1121	1092	2844	756
	1%	1%	1%	2%	1%
grade 5 events	2244	2536	2267	2878	2527
	3%	3%	2%	2%	3%
grade 6 events	1339	1721	1495	3042	1393
	2%	2%	1%	2%	2%
grade 7 events	53932	52108	61482	58631	56631
	80%	72%	73%	41%	84%

2.2 Compared Parameters

Parameter	Planned	Actual	Parameter	Planned	Actual
Instrument	ACIS	ACIS	Obspar format version number	6	6
Detector	ACIS-01236	ACIS-01236	Obspar file type	PREDICTED	ACTUAL
Grating	NONE	NONE	Obspar update status	NONE	UPDATED
Data mode	VFAINT	VFAINT	On-chip summing requested	N	N
Observation mode	POINTING	POINTING	Subarray requested	NONE	NONE
Pointing RA	227.757317	227.7619653126379	Alternating exposures requested	N	N
Pointing Dec	5.721736	5.748725123875857	Primary exposure time	0.000000	3.1
Pointing Roll	49.948022	50.15621785558975			
SIM focus pos (mm)	-0.782348	-0.7809083437167272			
SIM defocus (mm)	0	0.001439871863259334			
SIM translation stage pos (mm)	-233.592463	-233.5874344608287			
SIM translation stage offset (mm)	0	-0.005018542100998502			
Observation start time	219642705.184000	219641685.5667			
Observation start date	2004-12-17T03:50:41	2004-12-17T03:34:45			
Observation end time	219652705.184000	219653301.89222			
Observation end date	2004-12-17T06:37:21	2004-12-17T06:48:21			
Read mode	TIMED	TIMED			

2.3 Aspect



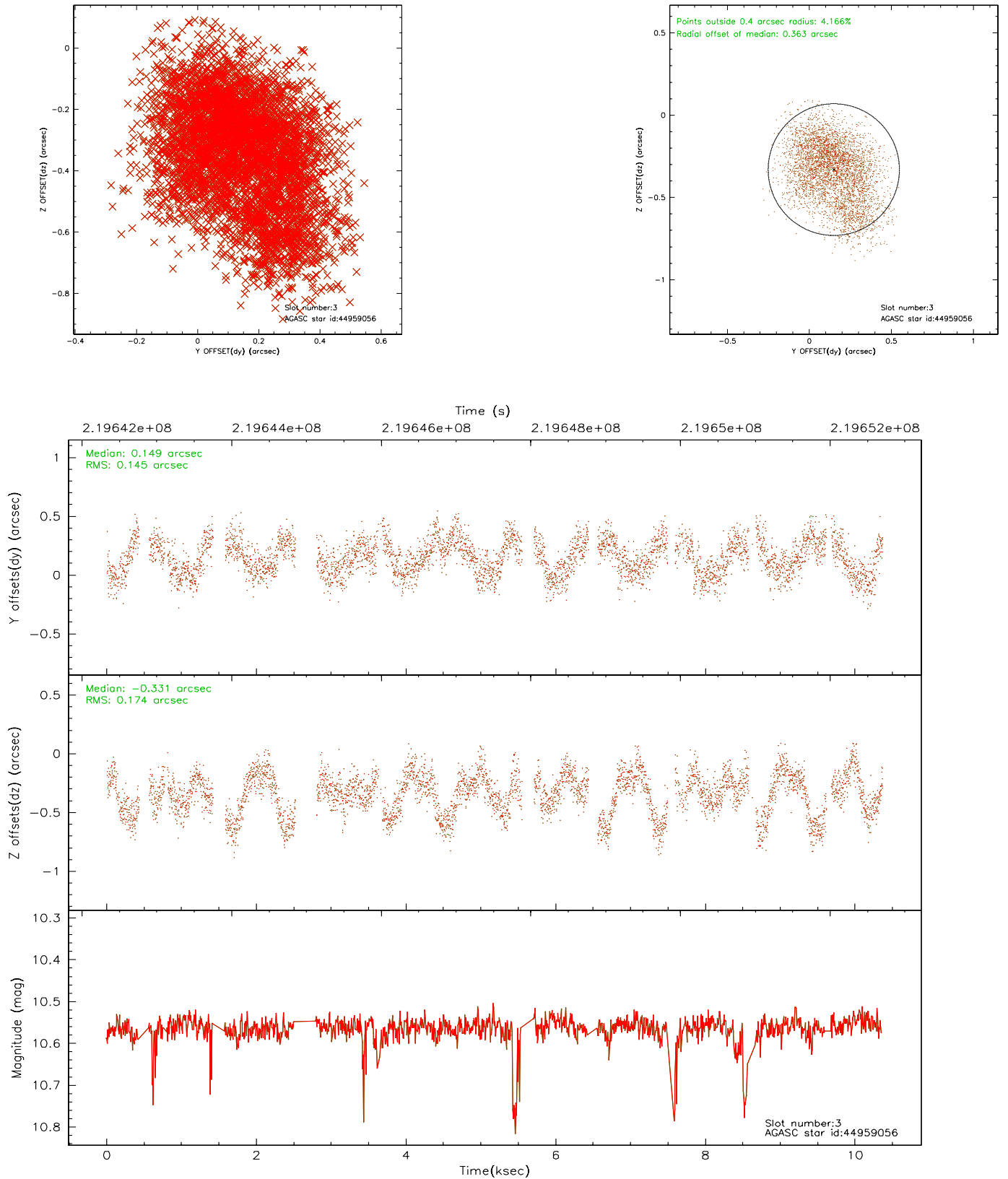


Slot Statistics

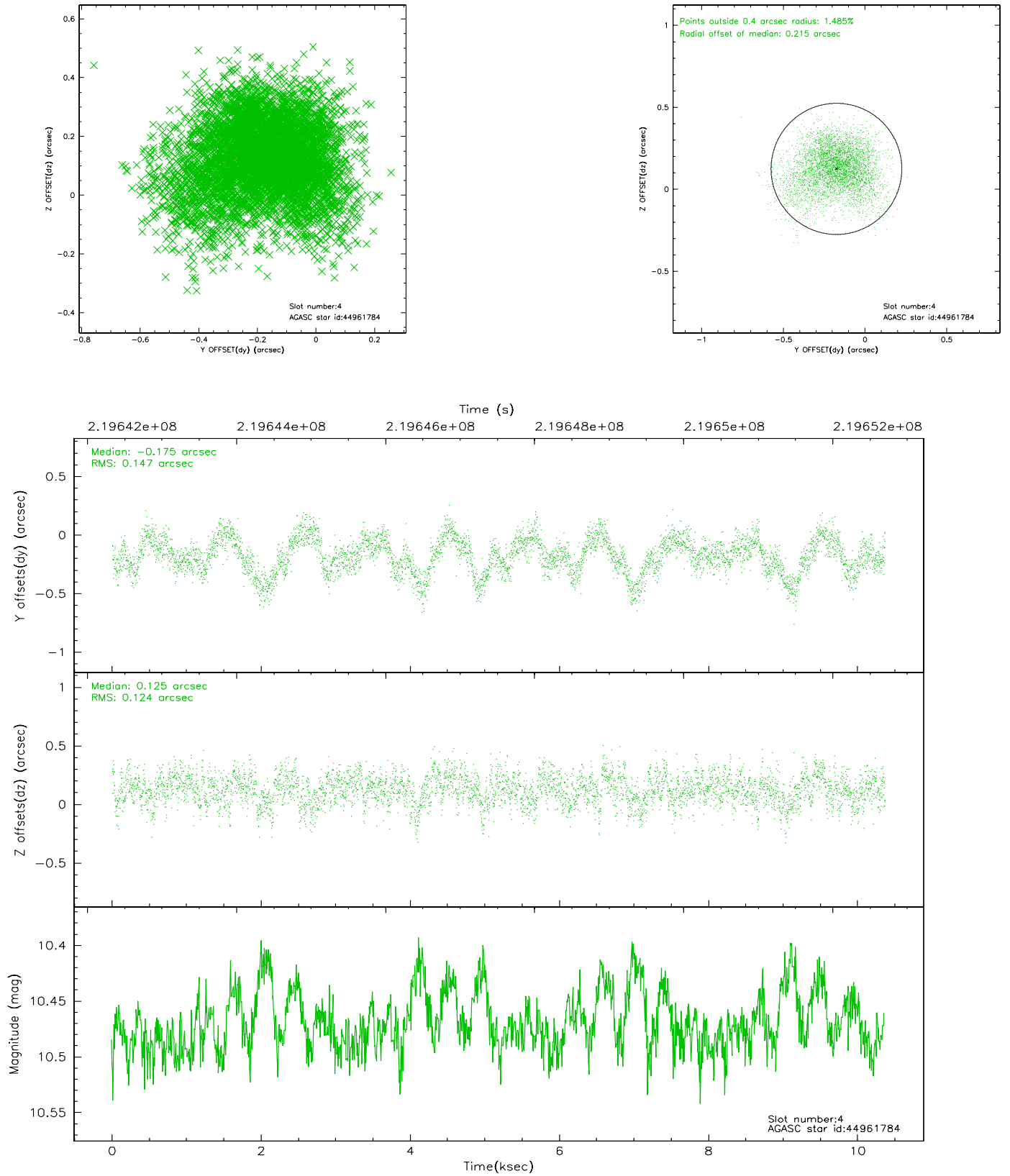
slot	status	id	mag	n_pts	med_dy	med_dz	dr1	dr2	ra	dec	mean_y	mean_z
0	FID	ACIS-I-1	7.24	2528	-0.059	-0.005	0.013	0.021	0.000000	0.000000	932.43	-835.11
1	FID	ACIS-I-2	7.14	2528	-0.106	-0.033	0.008	0.013	0.000000	0.000000	-761.43	-841.84
2	FID	ACIS-I-4	7.17	2528	0.067	0.106	0.008	0.014	0.000000	0.000000	2152.20	1064.56
3	BAD	44959056	10.56	4393	0.149	-0.331	0.242	0.388	227.388506	5.331015	-1927.99	107.90
4	GUIDE	44961784	10.47	5051	-0.175	0.125	0.203	0.340	228.123885	5.352388	-172.59	-1860.05
5	OMITTED		0.00	0	0.000	0.000	0.000	0.000	0.000000	0.000000	0.00	0.00
6	GUIDE	44959920	11.19	5047	0.073	0.252	0.323	0.485	227.796954	4.888165	-2205.57	-2039.48
7	GUIDE	44961936	10.26	5052	-0.014	-0.074	0.166	0.282	226.889483	5.605009	-2321.44	2111.13

2.4 Star Slots

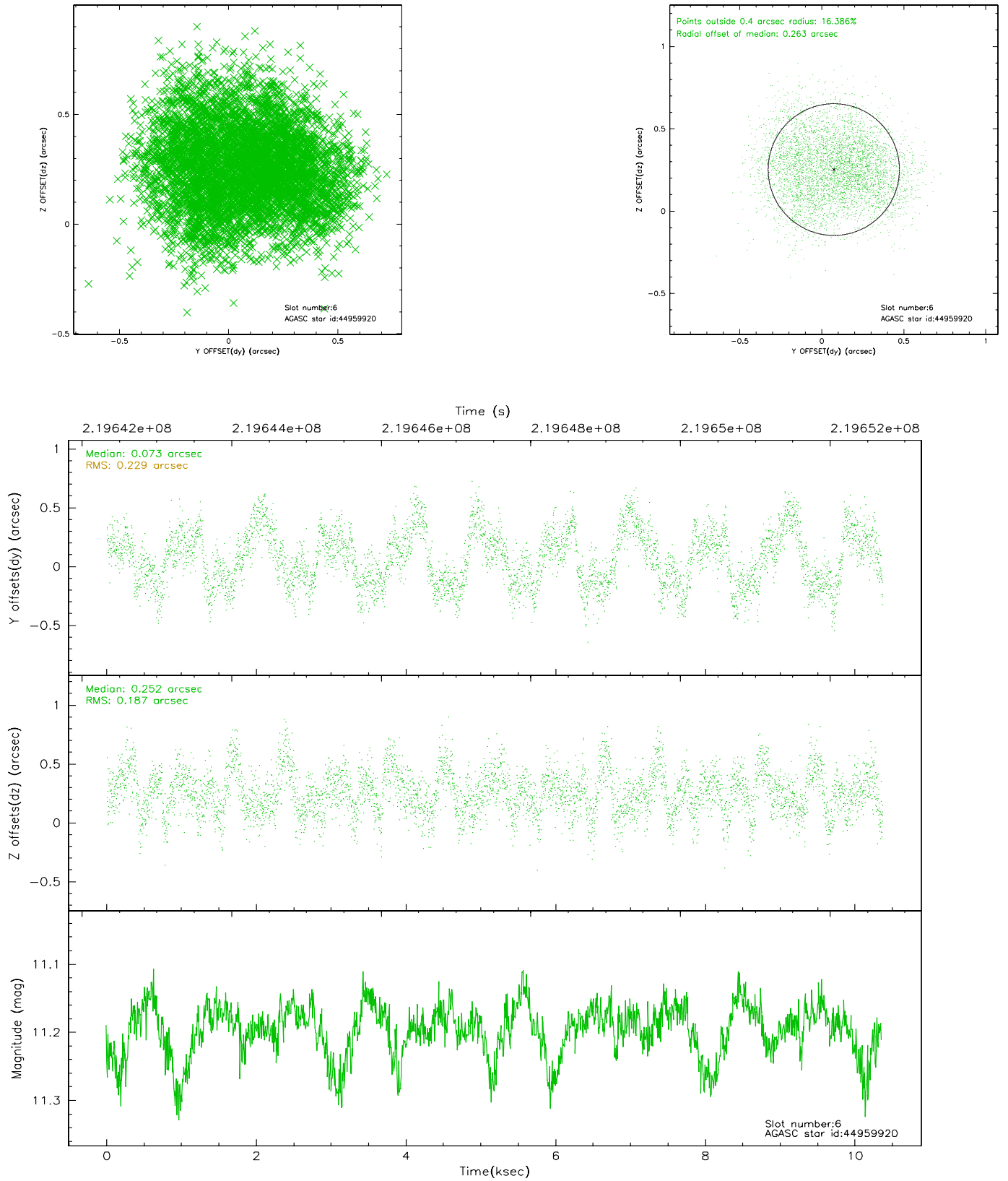
2.4.1 Slot 3



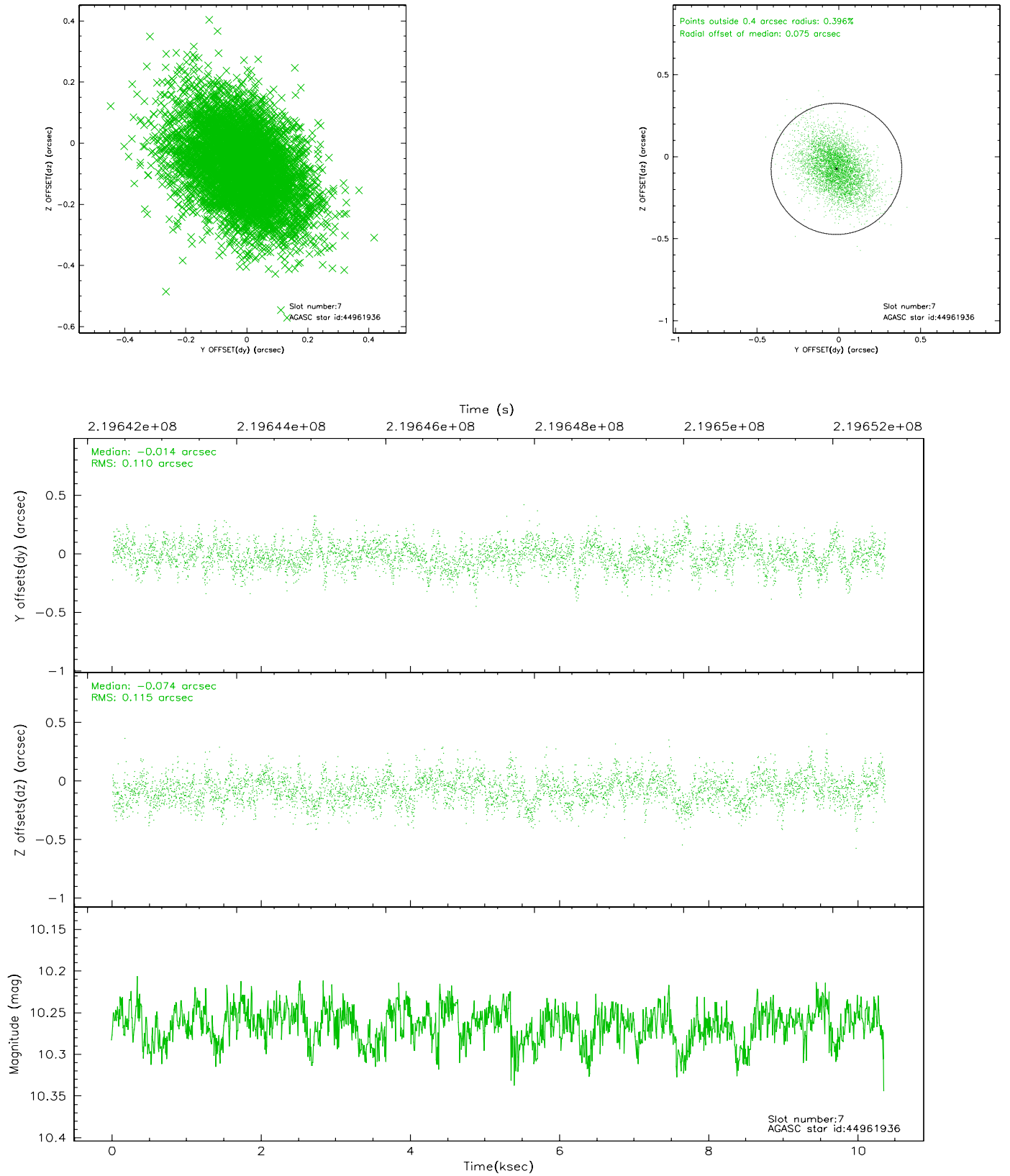
2.4.2 Slot 4



2.4.3 Slot 6

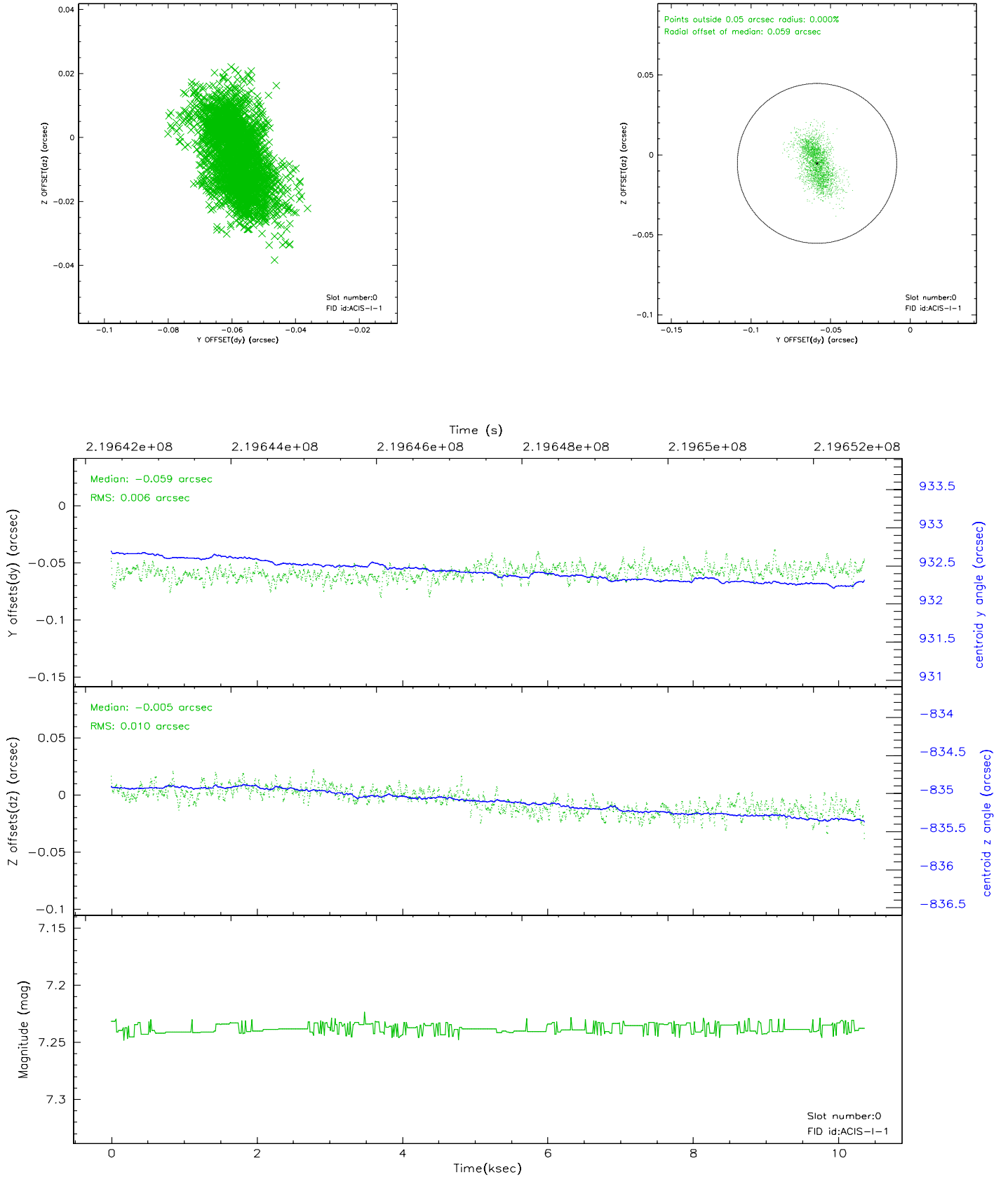


2.4.4 Slot 7

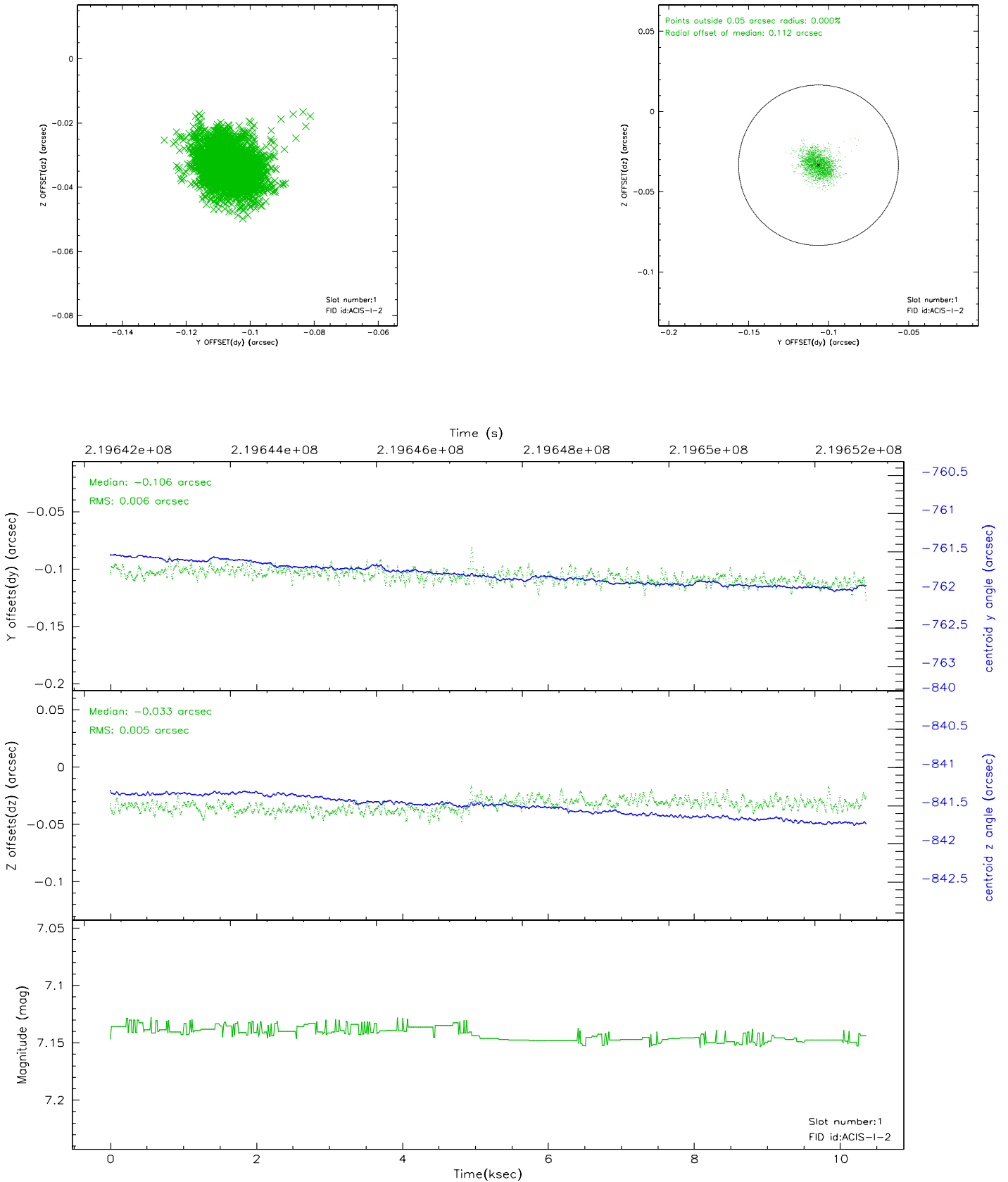


2.5 FID Slots

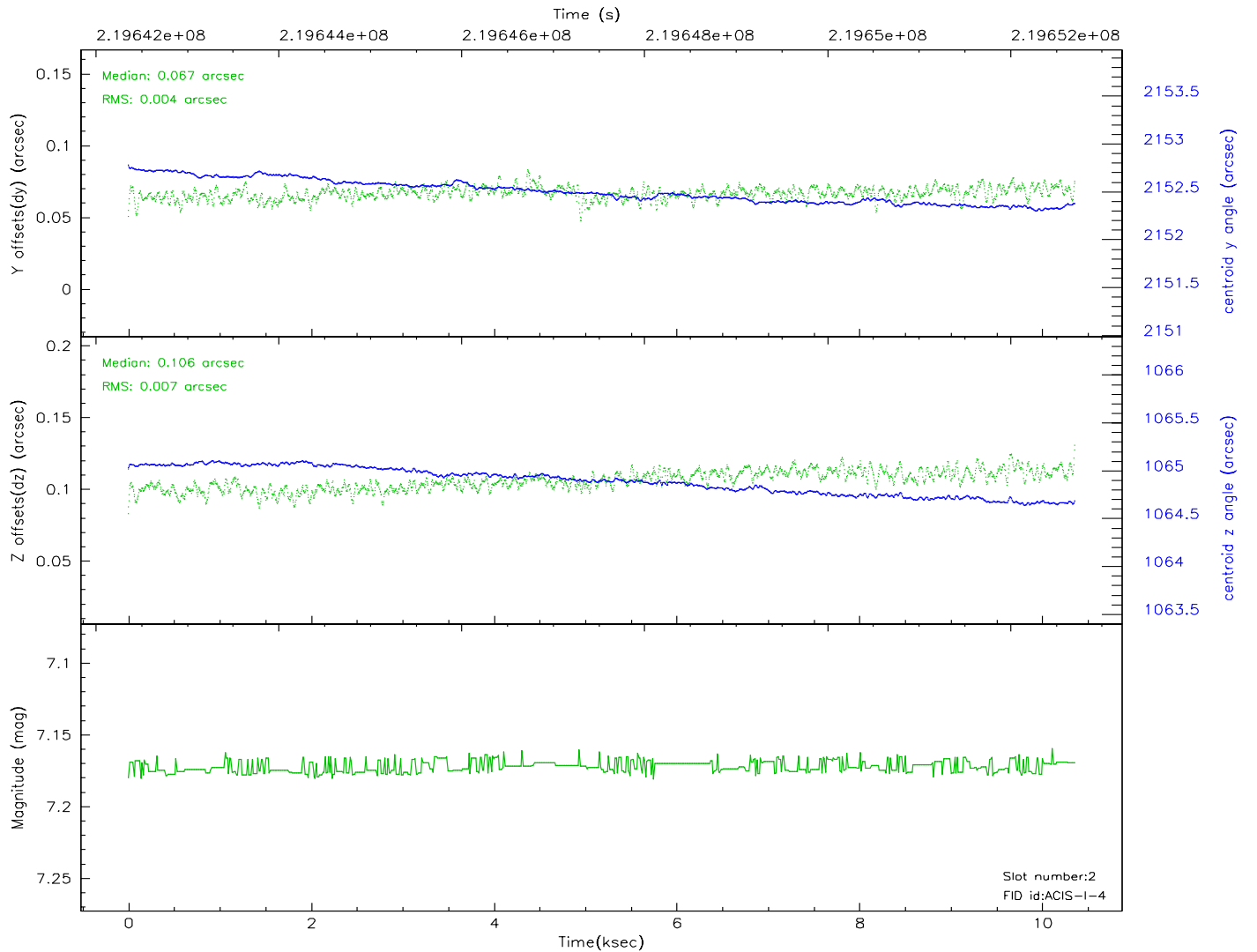
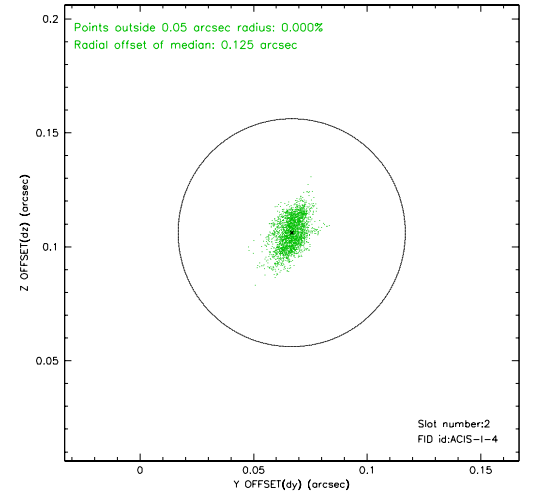
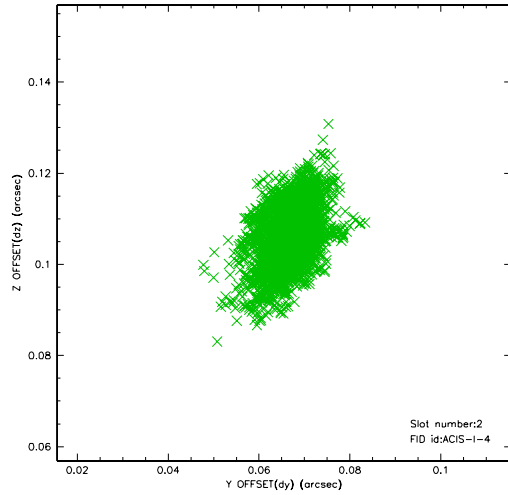
2.5.1 Slot 0



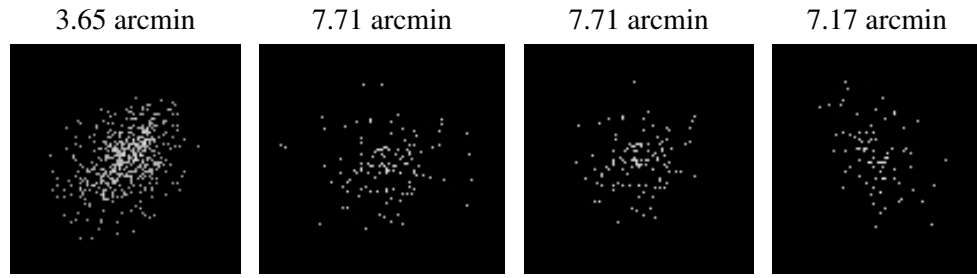
2.5.2 Slot 1



2.5.3 Slot 2



3 Point Sources



A Summary

A.1 Status

V&V Scientist	Beth Sundheim
V&V Date (YYYY-MM-DD)	2010.10.04
V&V Edition	2
V&V Disposition and Status	OK
V&V Charge Time	10.05019

A.2 Comments

The guide star in slot 5 was manually excluded from the processing due to

poor data quality.

The guide star in slot 3 was removed from the aspect solution due to poor data quality.