

V&V Reference Report

L2 ASCDS Version : 7.6.7.2

Observation 5358 - L2 Version 001
Chandra X-Ray Center

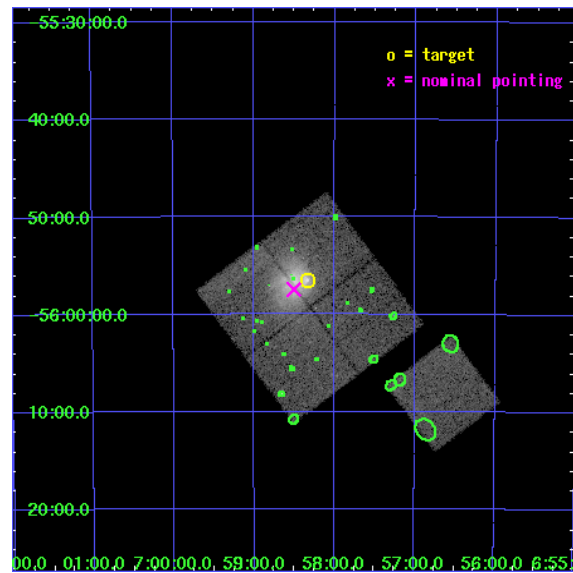
L2 Processing Date : Apr 24 2006

Contents

1	Front	2
2	OBI	3
2.1	OBI	3
2.1.1	Images	3
2.1.2	Bias	3
2.1.3	Parameters	4
2.1.4	Events	4
2.2	Compared Parameters	5
2.3	Aspect	6
2.4	Star Slots	9
2.4.1	Slot 3	9
2.4.2	Slot 4	10
2.4.3	Slot 5	11
2.4.4	Slot 6	12
2.4.5	Slot 7	13
2.5	FID Slots	14
2.5.1	Slot 0	14
2.5.2	Slot 1	15
2.5.3	Slot 2	16
3	Point Sources	17
A	Summary	18
A.1	Status	18
A.2	Comments	18

1 Front

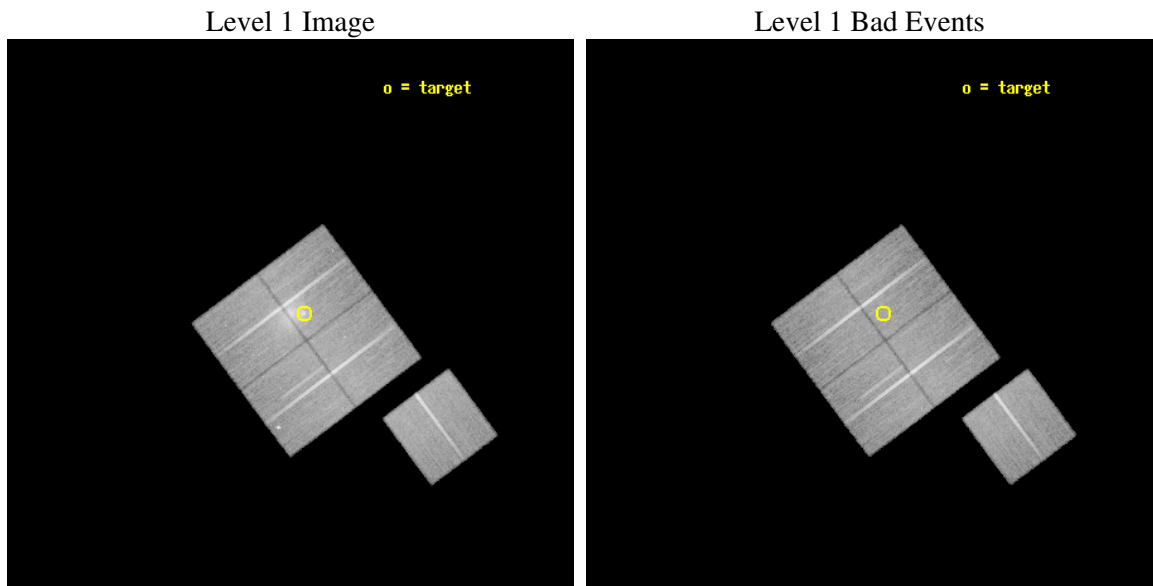
seq_num	800429
obs_id	5358
title	THE MOST INTERESTING CLUSTER IN THE UNIVERSE
observer	Dr Maxim Markevitch
object	1E0657-56
dtcycle	0
cycle	P
ra_targ	104.5827
dec_targ	-55.9415
ra_nom	104.62614170936
dec_nom	-55.95756129161
roll_nom	143.24466743156
revision	2
ontime	32379.417977303
livetime	31956.357044049
ontime0	32379.417977303
ontime1	32382.558997393
ontime2	32373.136056751
ontime3	32373.136036843
ontime6	32379.418007225
l2events	128972



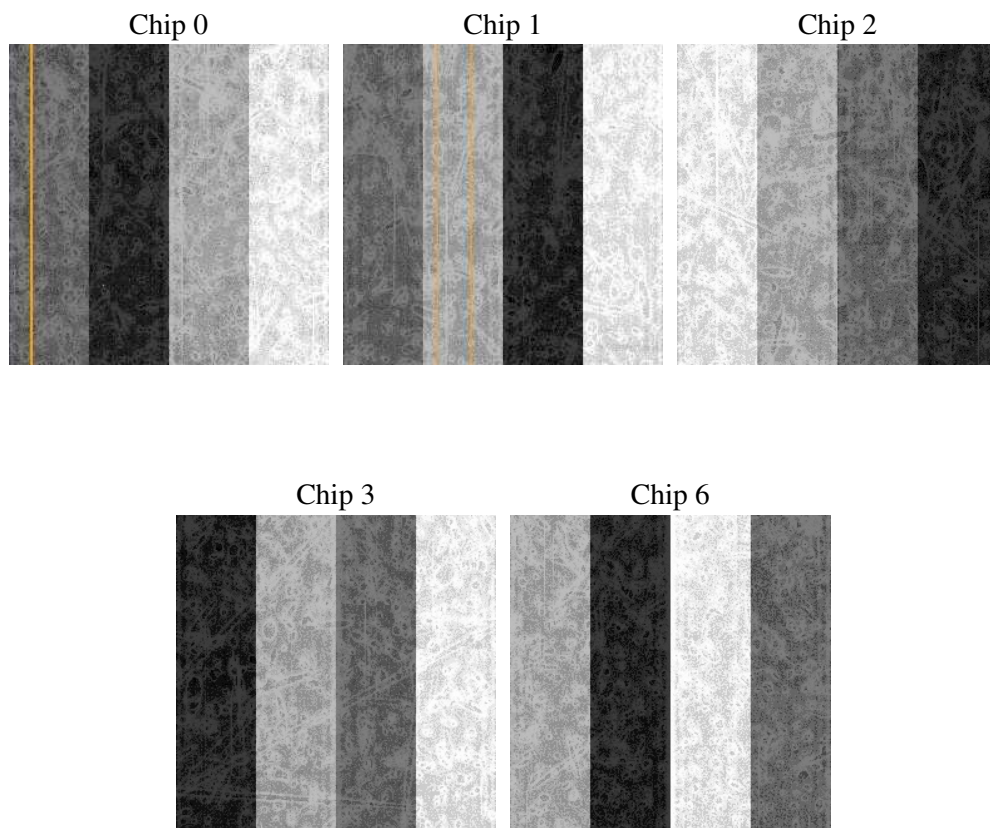
2 OBI

2.1 OBI

2.1.1 Images



2.1.2 Bias



2.1.3 Parameters

obi_num	0
ascdsver	7.6.7.2
caldbver	3.2.1
date	2006-04-24T23:27:11
revision	2

sched_exp_time	32231.452000
ontime	32754.389437139
ontime0	32754.389437139
ontime1	32757.530457228
ontime2	32748.107516587
ontime3	32748.107496679
ontime6	32754.389467061
l1events	1060922

2.1.4 Events

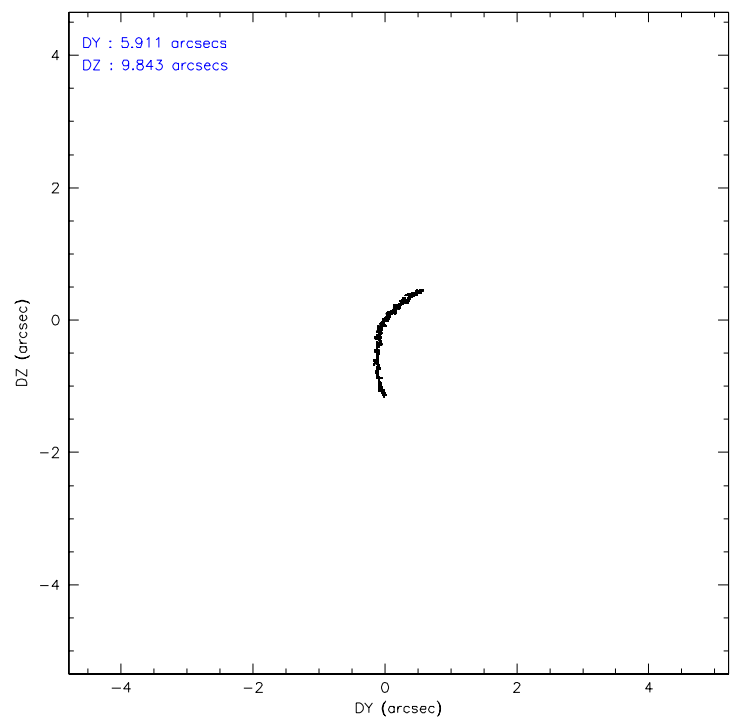
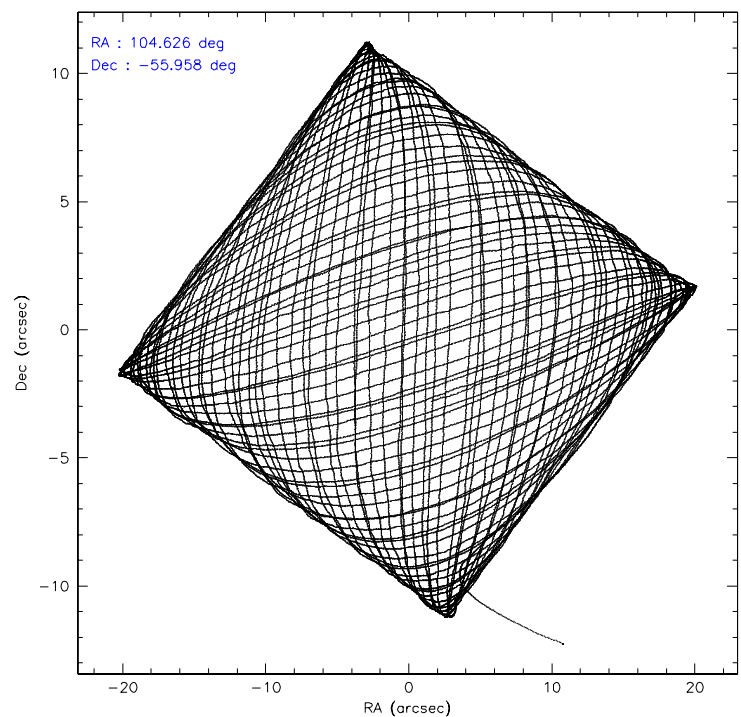
	ccd 0	ccd 1	ccd 2	ccd 3	ccd 6
level 1 events	219337	210795	214849	211179	204762
rejected events	173405	170174	194169	189684	184033
rejected %	79%	80%	90%	89%	89%

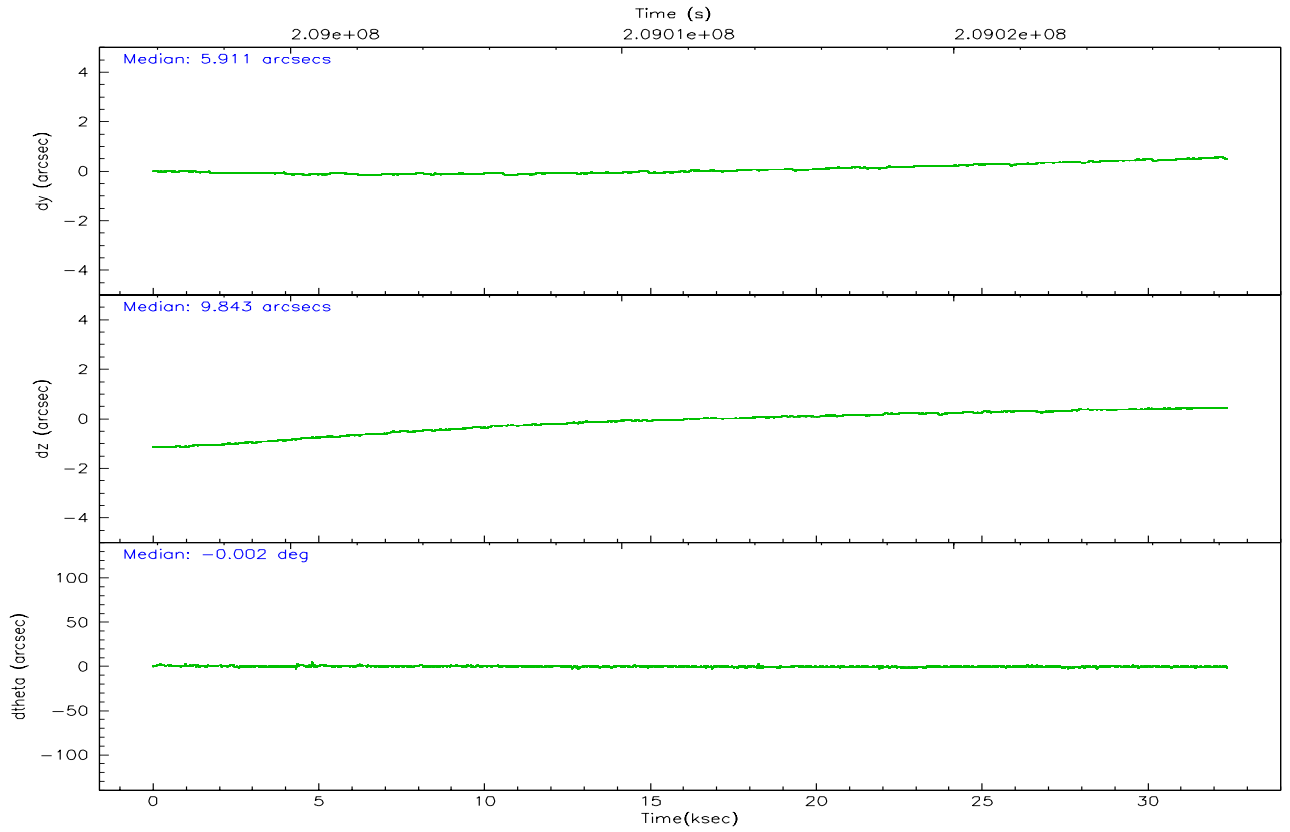
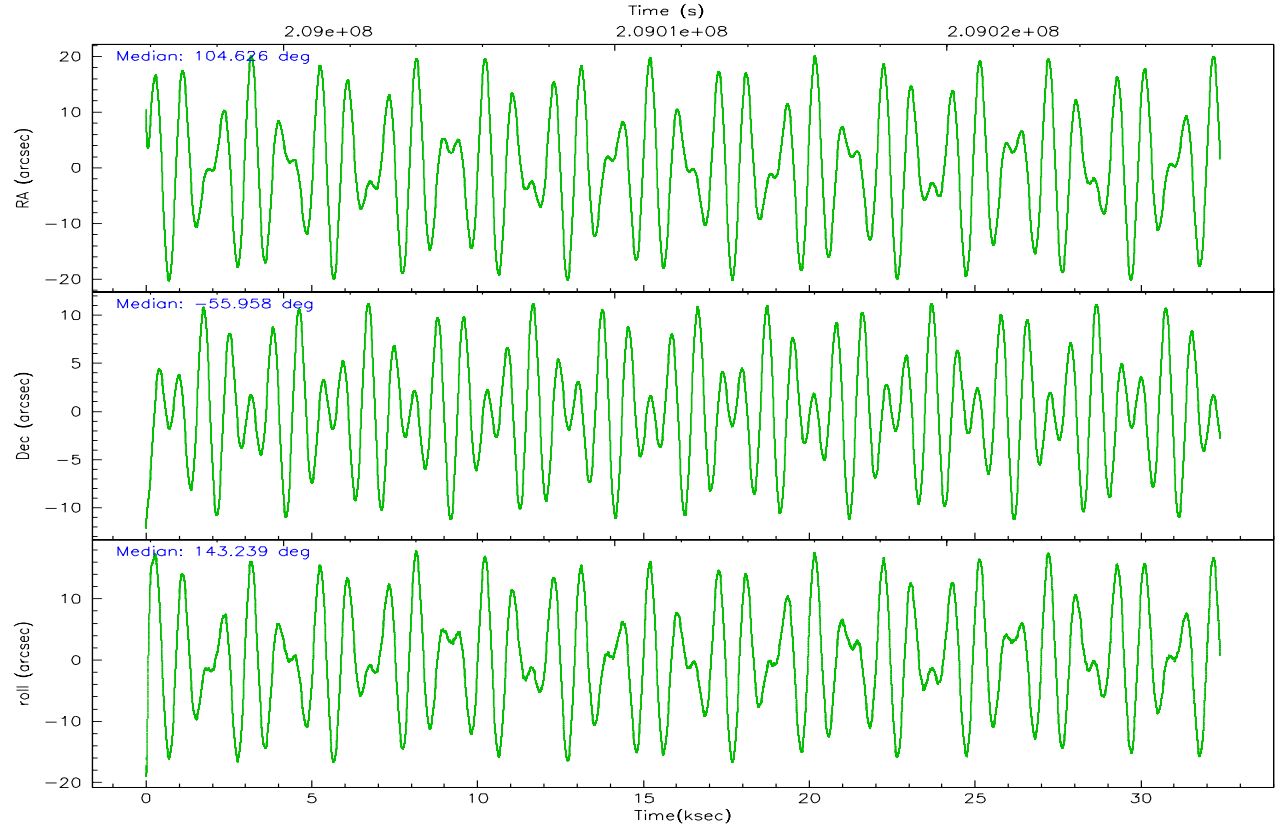
	ccd 0	ccd 1	ccd 2	ccd 3	ccd 6
grade 0 events	27931	22950	8079	8952	7523
	12%	10%	3%	4%	3%
grade 1 events	190	136	102	123	85
	0%	0%	0%	0%	0%
grade 2 events	7523	6883	4697	4423	4355
	3%	3%	2%	2%	2%
grade 3 events	3178	3133	2242	2291	2373
	1%	1%	1%	1%	1%
grade 4 events	3016	2901	2278	2267	2349
	1%	1%	1%	1%	1%
grade 5 events	7053	7696	6800	7849	7968
	3%	3%	3%	3%	3%
grade 6 events	4654	5108	3612	3796	4392
	2%	2%	1%	1%	2%
grade 7 events	165792	161988	187039	181478	175717
	75%	76%	87%	85%	85%

2.2 Compared Parameters

Parameter	Planned	Actual	Parameter	Planned	Actual
Instrument	ACIS	ACIS	Obspar format version number	6	6
Detector	ACIS-01236	ACIS-01236	Obspar file type	PREDICTED	ACTUAL
Grating	NONE	NONE	Obspar update status	NONE	UPDATED
Data mode	VFAINT	VFAINT	On-chip summing requested	N	N
Observation mode	POINTING	POINTING	Subarray requested	NONE	NONE
Pointing RA	104.674685	104.6261417093562	Alternating exposures requested	N	N
Pointing Dec	-55.960653	-55.95756129161025	Primary exposure time	0.000000	3.1
Pointing Roll	143.076217	143.2446674315584			
SIM focus pos (mm)	-0.782348	-0.7809083437167272			
SIM defocus (mm)	0	0.001439871863259334			
SIM translation stage pos (mm)	-242.592463	-242.5987405016197			
SIM translation stage offset (mm)	9	9.006287498690028			
Observation start time	208996016.184000	208994850.1902			
Observation start date	2004-08-15T22:25:52	2004-08-15T22:07:30			
Observation end time	209028247.184000	209028483.51669			
Observation end date	2004-08-16T07:23:03	2004-08-16T07:28:03			
Read mode	TIMED	TIMED			

2.3 Aspect



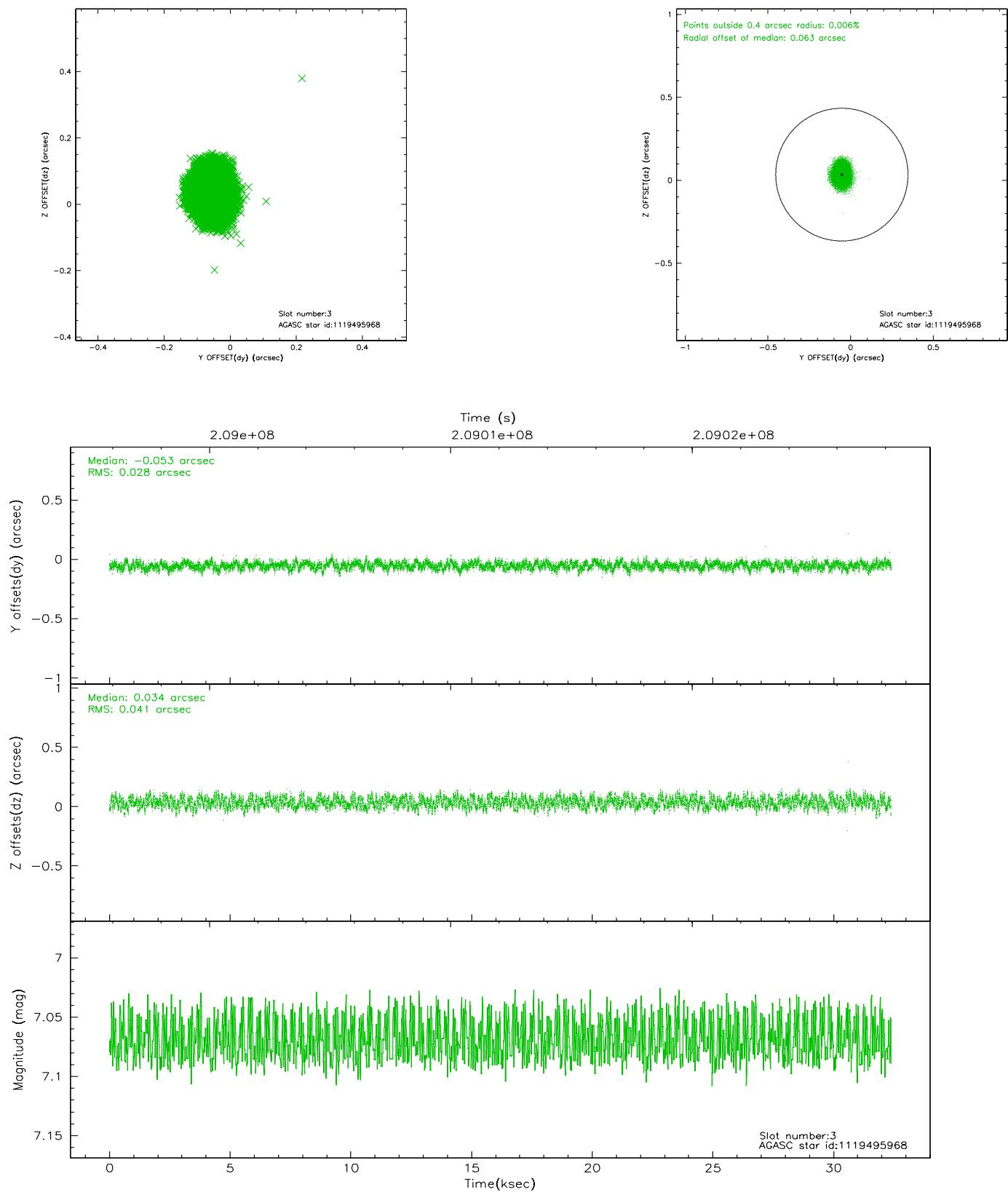


Slot Statistics

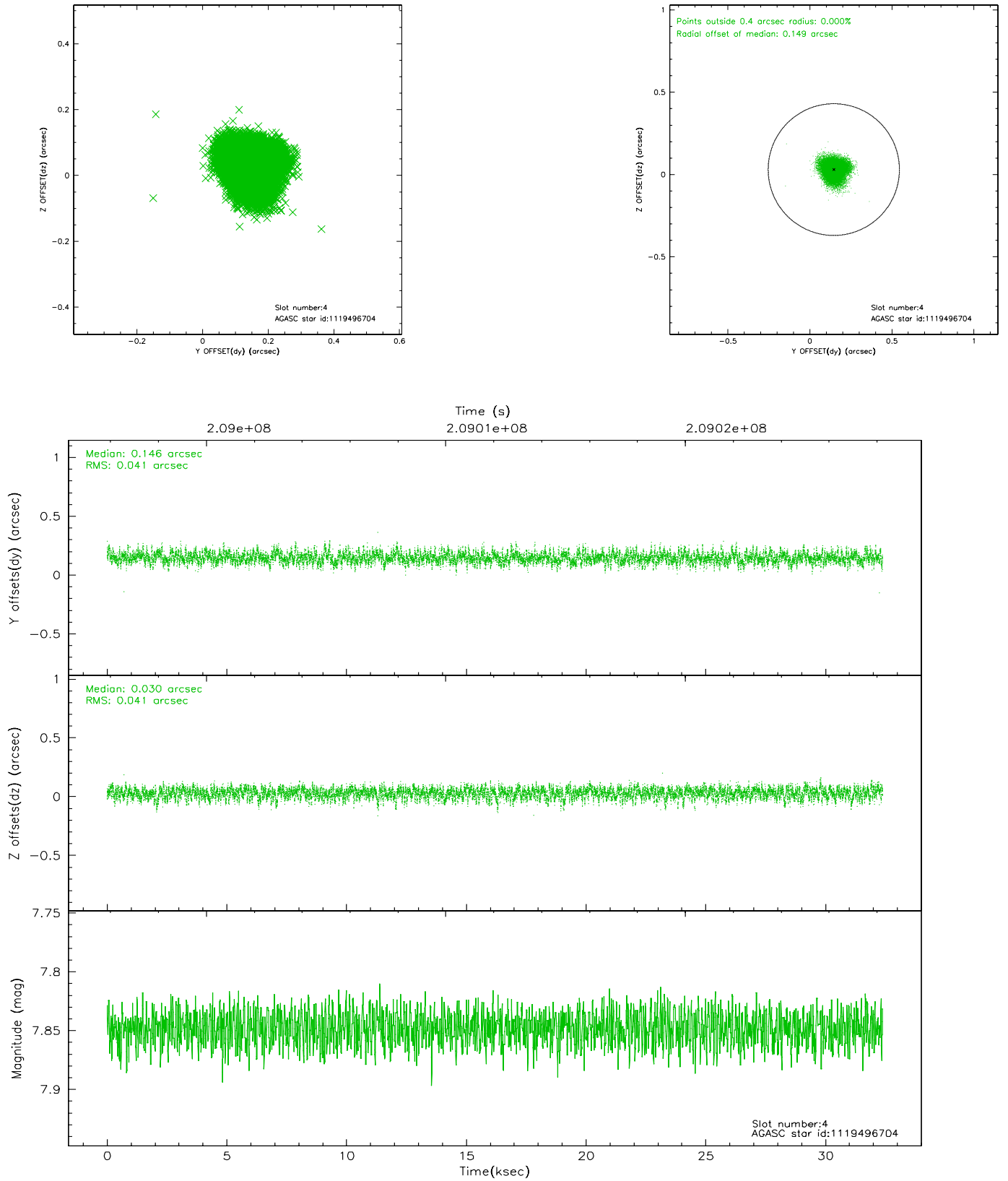
slot	status	id	mag	n_pts	med_dy	med_dz	dr1	dr2	ra	dec	mean_y	mean_z
0	FID	ACIS-I-2	7.17	7898	-0.009	-0.019	0.021	0.041	0.000000	0.000000	-759.82	-655.64
1	FID	ACIS-I-4	7.23	7899	0.085	0.019	0.012	0.024	0.000000	0.000000	2154.34	1250.65
2	FID	ACIS-I-5	7.23	7901	-0.177	0.070	0.016	0.026	0.000000	0.000000	-1814.23	1249.73
3	GUIDE	1119495968	7.07	15801	-0.053	0.034	0.053	0.082	105.873528	-55.948238	-1917.32	-1470.80
4	GUIDE	1119496704	7.85	15794	0.146	0.030	0.062	0.101	104.368364	-55.667750	1130.04	-467.96
5	GUIDE	1119499792	7.25	15799	-0.111	-0.060	0.060	0.094	104.350048	-56.101305	216.21	797.68
6	GUIDE	1120026344	6.71	15801	0.009	-0.100	0.062	0.101	104.651539	-56.394853	-902.18	1277.62
7	GUIDE	1119500592	8.69	15797	0.002	0.100	0.090	0.145	105.814889	-55.642715	-1175.20	-2291.05

2.4 Star Slots

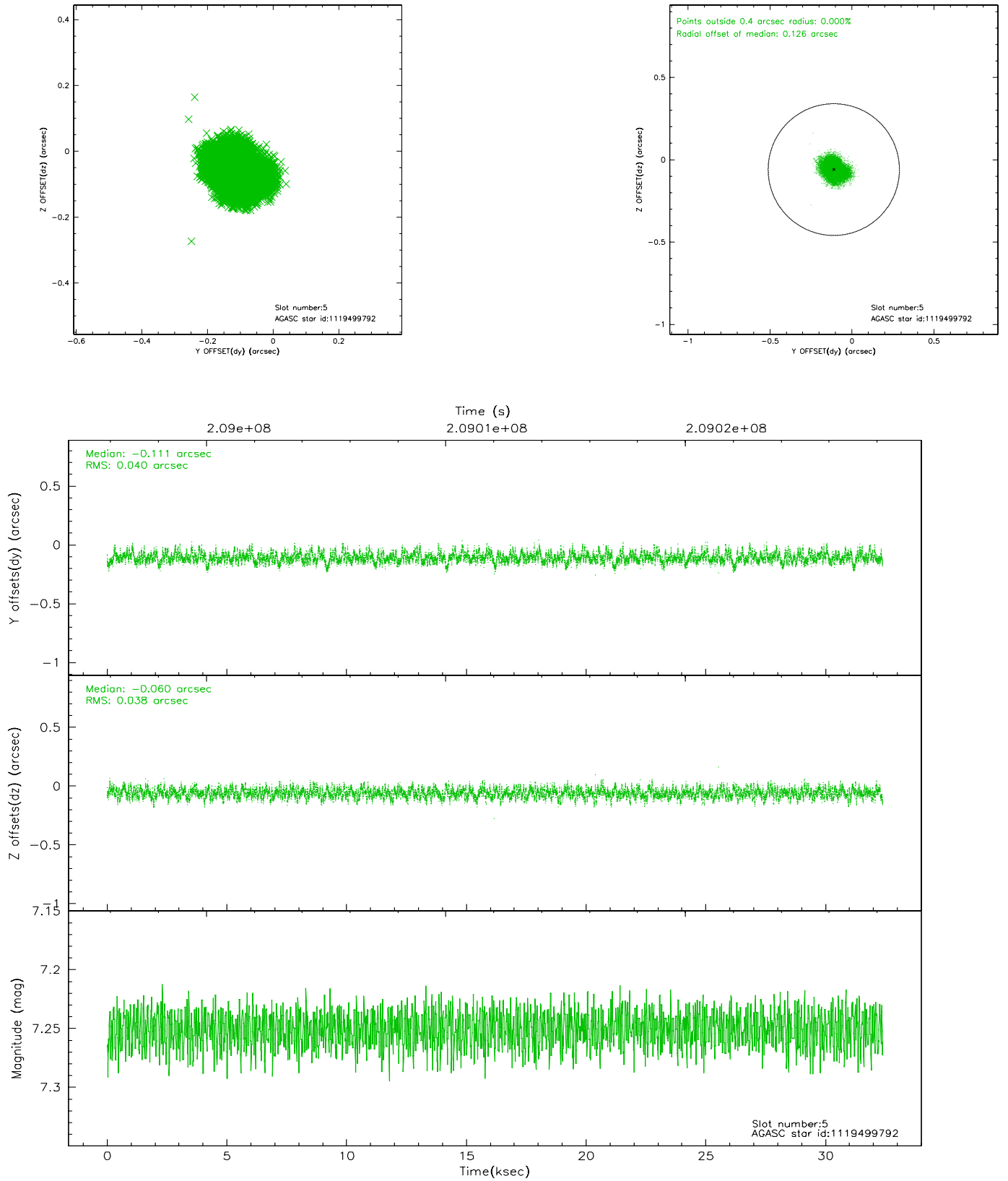
2.4.1 Slot 3



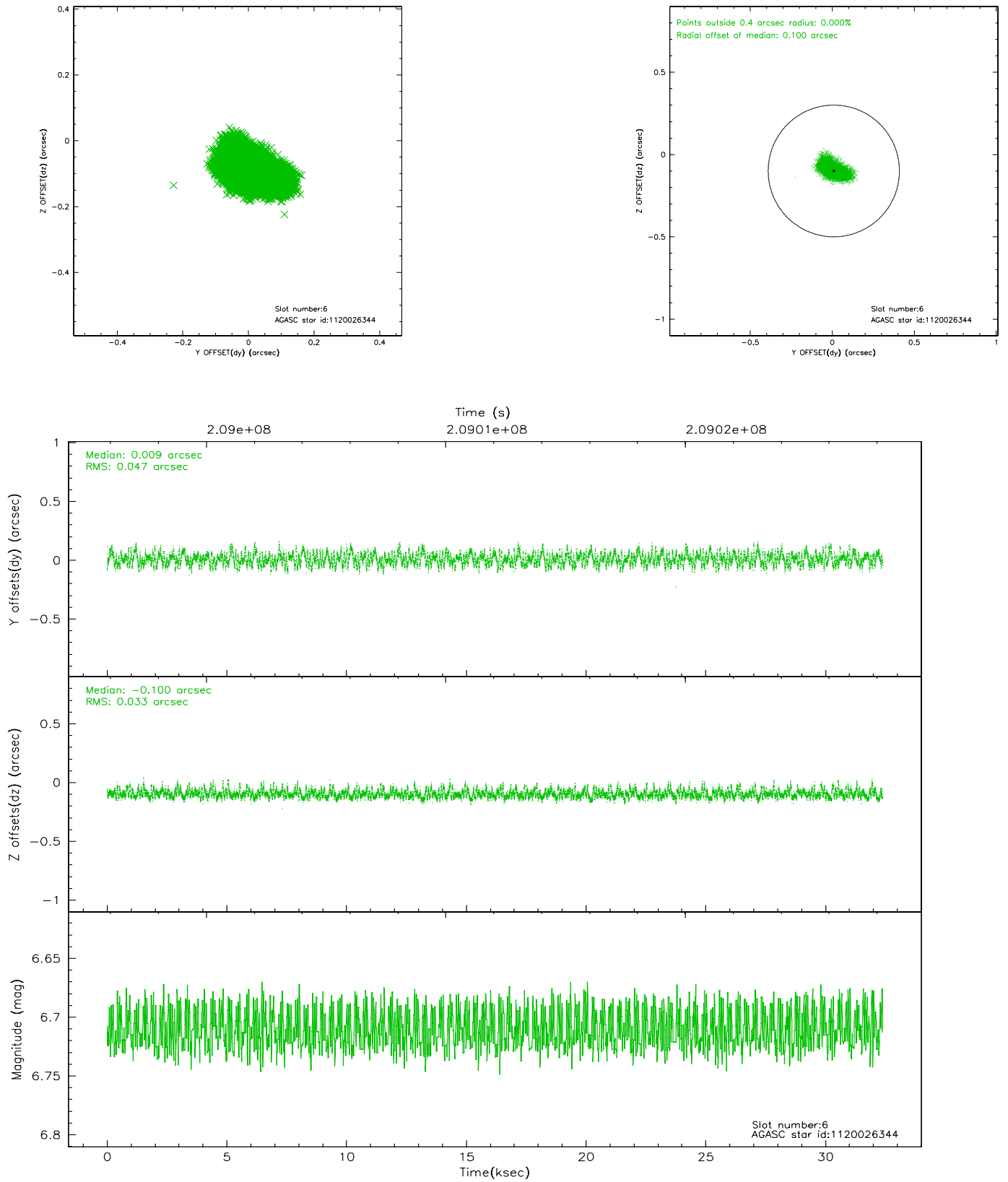
2.4.2 Slot 4



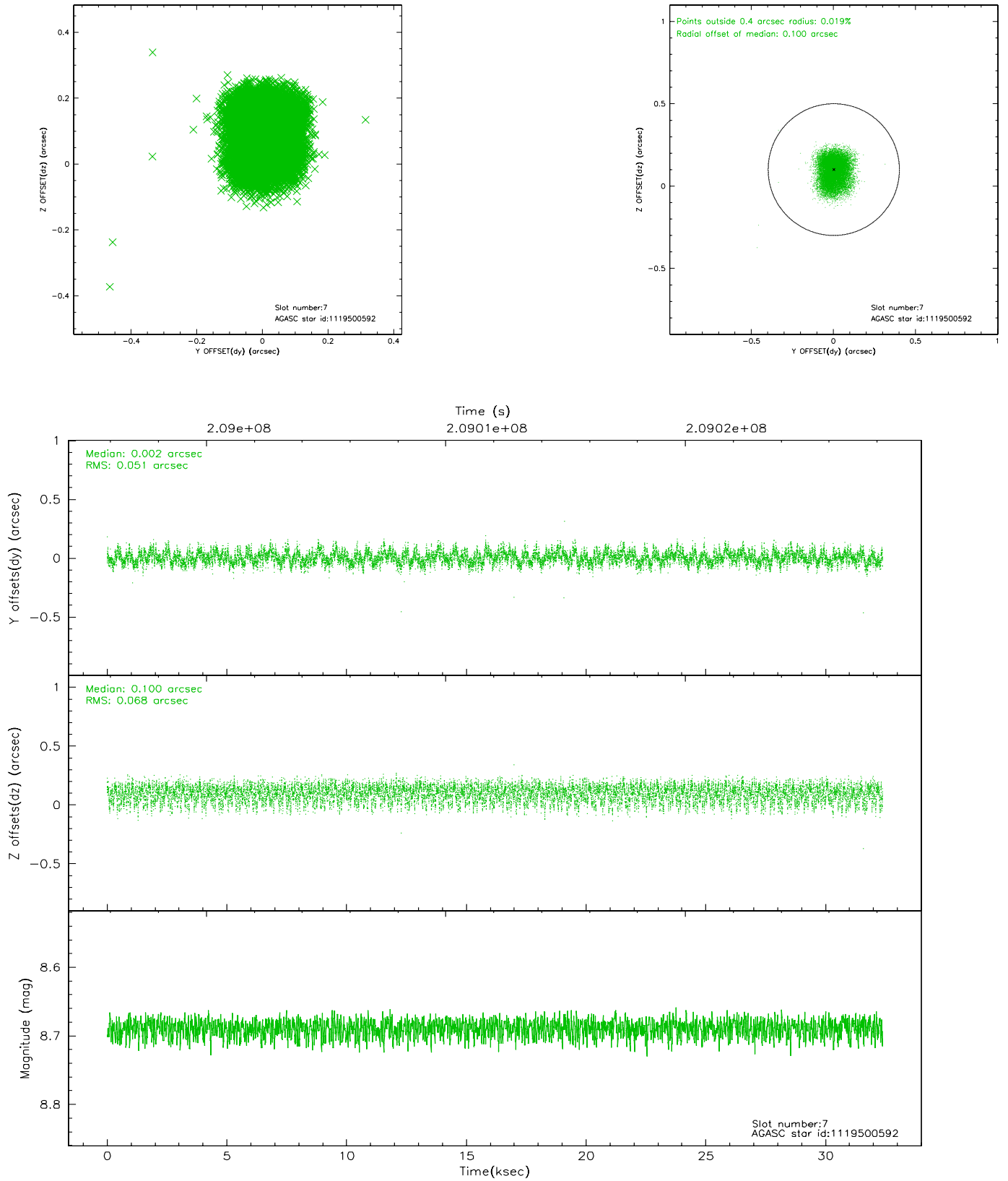
2.4.3 Slot 5



2.4.4 Slot 6

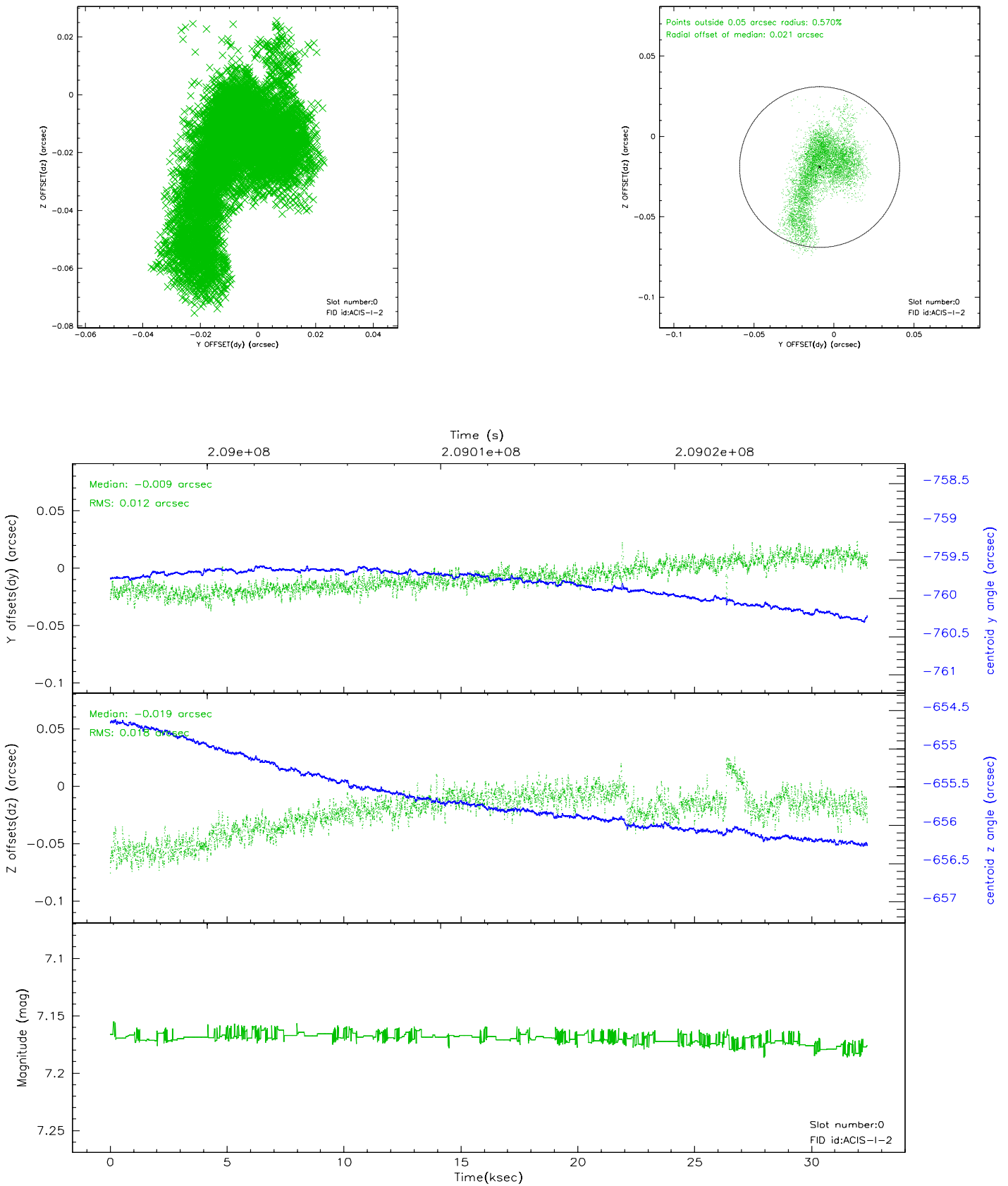


2.4.5 Slot 7

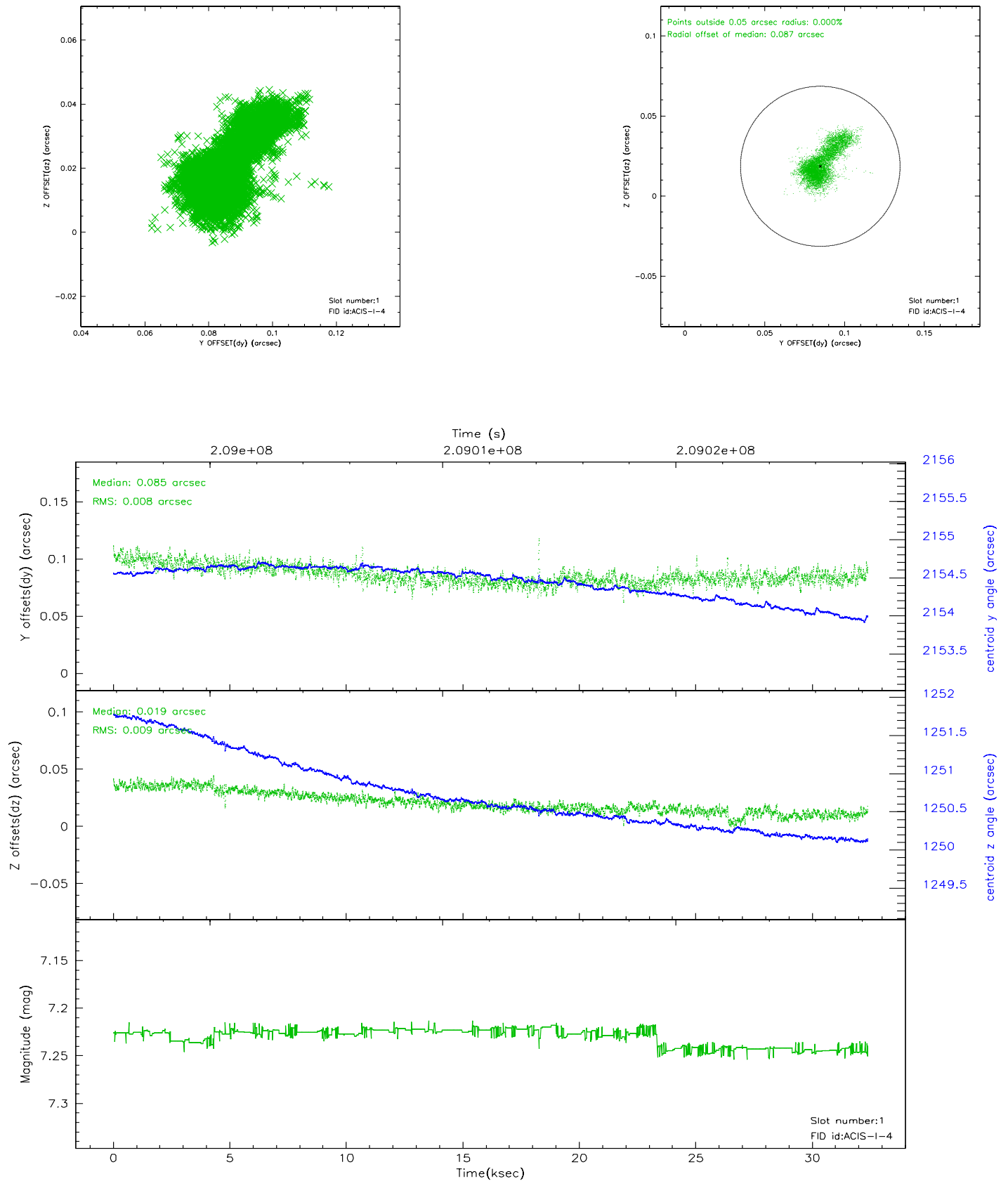


2.5 FID Slots

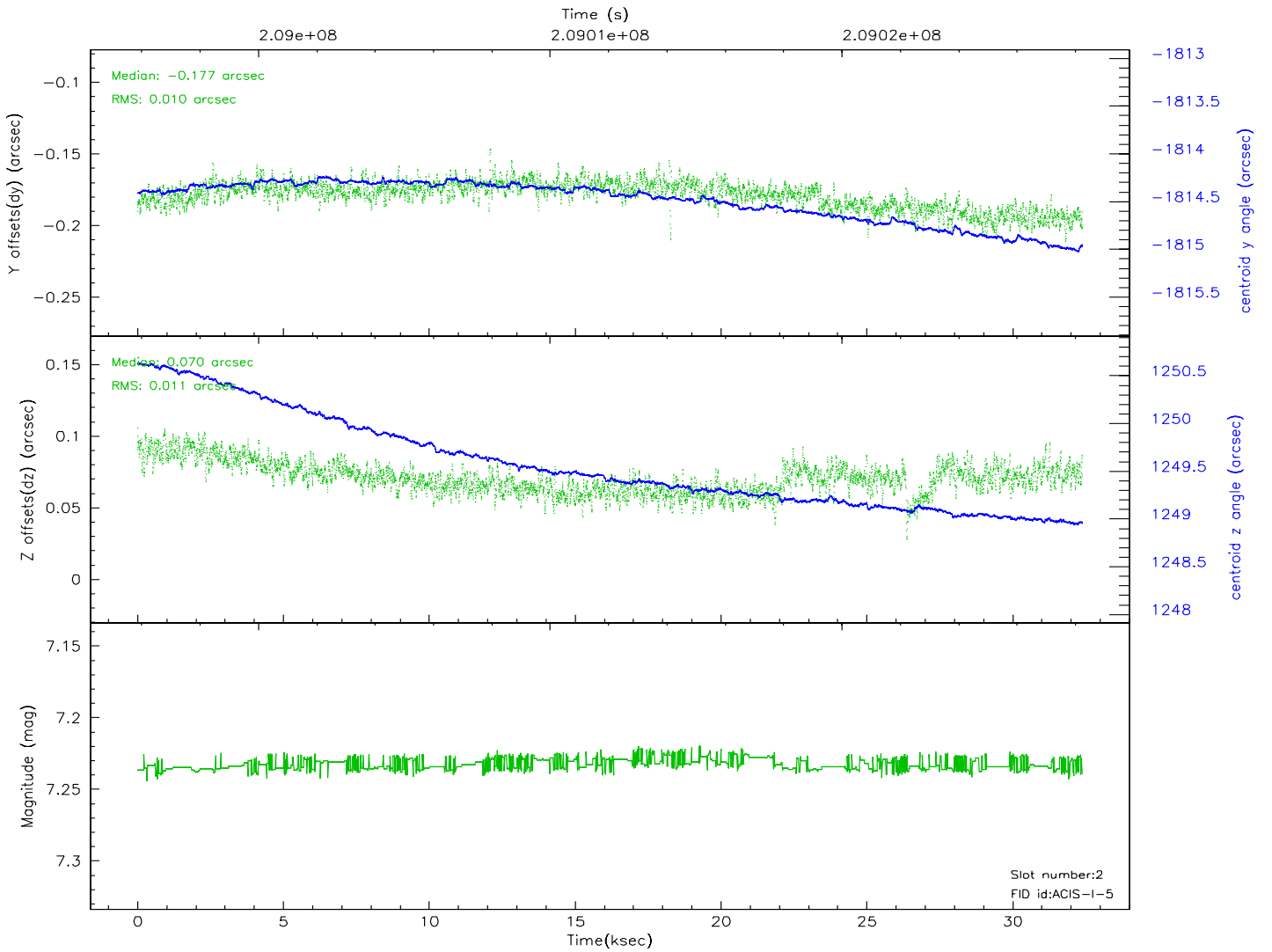
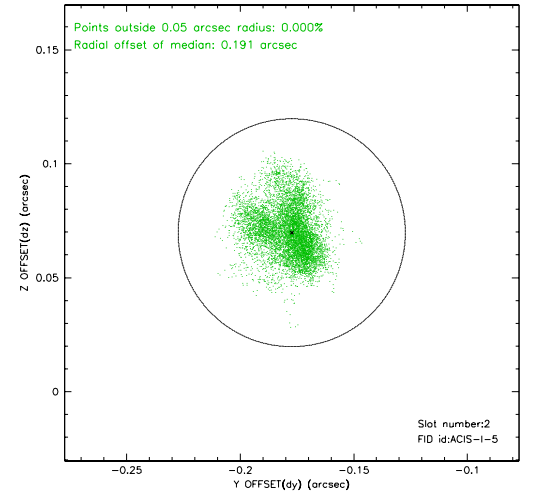
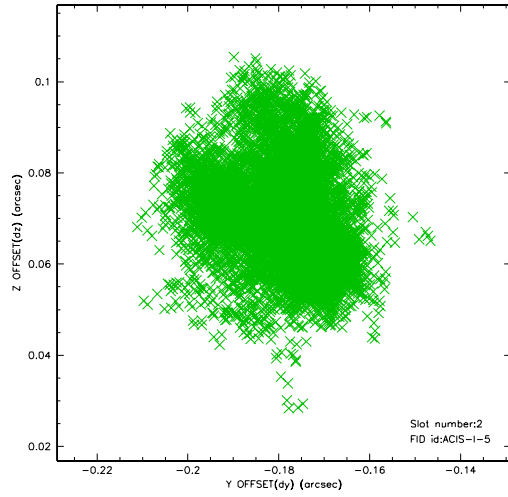
2.5.1 Slot 0



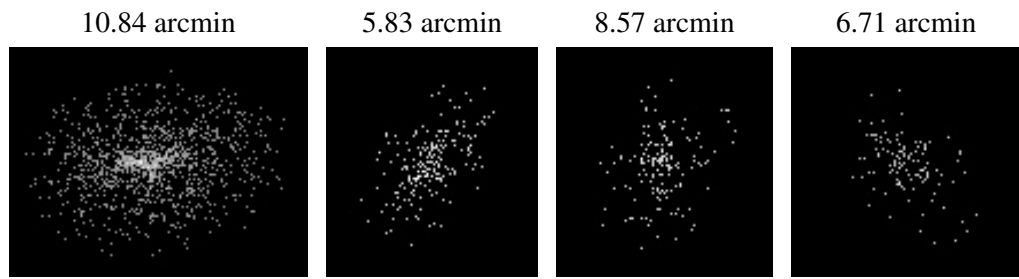
2.5.2 Slot 1



2.5.3 Slot 2



3 Point Sources



A Summary

A.1 Status

V&V Scientist	Jen Lauer
V&V Date (YYYY-MM-DD)	2006.04.25
V&V Edition	1
V&V Disposition and Status	OK
V&V Charge Time	32.379

A.2 Comments