

# V&V Reference Report

## L2 ASCDS Version : 7.6.7.2

Observation 5010 - L2 Version 001  
Chandra X-Ray Center

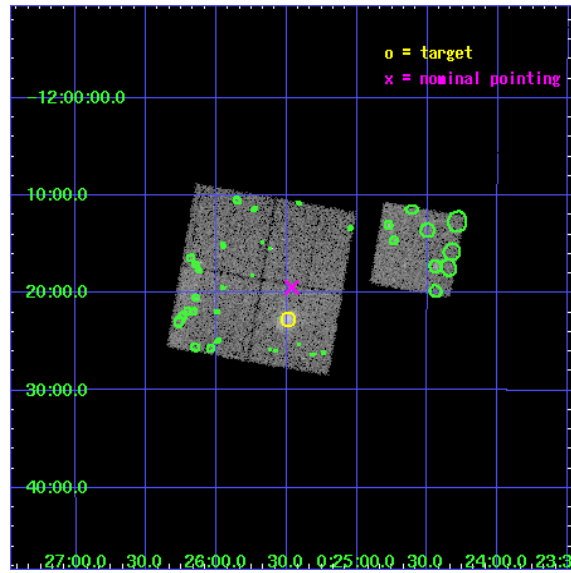
L2 Processing Date : Apr 26 2006

## Contents

<b>1</b>	<b>Front</b>	<b>2</b>
<b>2</b>	<b>OBI</b>	<b>3</b>
2.1	OBI . . . . .	3
2.1.1	Images . . . . .	3
2.1.2	Bias . . . . .	3
2.1.3	Parameters . . . . .	4
2.1.4	Events . . . . .	4
2.2	Compared Parameters . . . . .	5
2.3	Aspect . . . . .	6
2.4	Star Slots . . . . .	9
2.4.1	Slot 3 . . . . .	9
2.4.2	Slot 4 . . . . .	10
2.4.3	Slot 5 . . . . .	11
2.4.4	Slot 6 . . . . .	12
2.4.5	Slot 7 . . . . .	13
2.5	FID Slots . . . . .	14
2.5.1	Slot 0 . . . . .	14
2.5.2	Slot 1 . . . . .	15
2.5.3	Slot 2 . . . . .	16
<b>3</b>	<b>Point Sources</b>	<b>17</b>
<b>A</b>	<b>Summary</b>	<b>18</b>
A.1	Status . . . . .	18
A.2	Comments . . . . .	18

# 1 Front

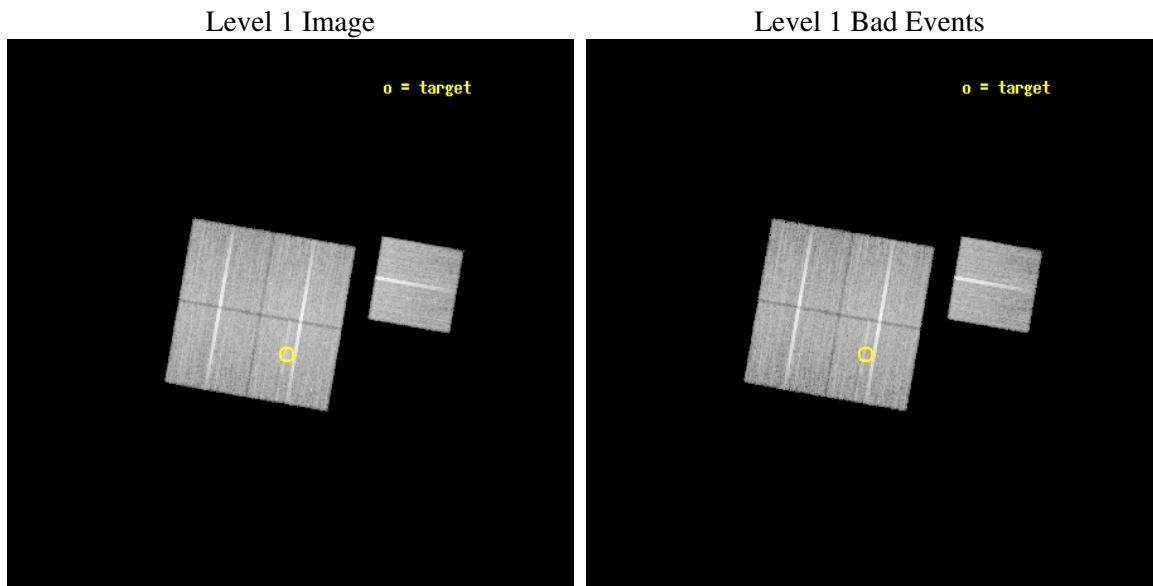
seq_num	800453
obs_id	5010
title	Cluster studies: Determination of H0/q0
observer	DR. LEON VANSPEYBROECK
object	MACS0025.4-1222
dtcycle	0
cycle	P
ra_targ	6.373333
dec_targ	-12.378056
ra_nom	6.3657132639963
dec_nom	-12.324292335752
roll_nom	99.959289218101
revision	3
ontime	25156.41796118
livetime	24827.730840632
ontime0	25153.277010858
ontime1	25159.558961451
ontime2	25153.277010858
ontime3	25156.41796118
ontime6	25159.558971375
l2events	66672



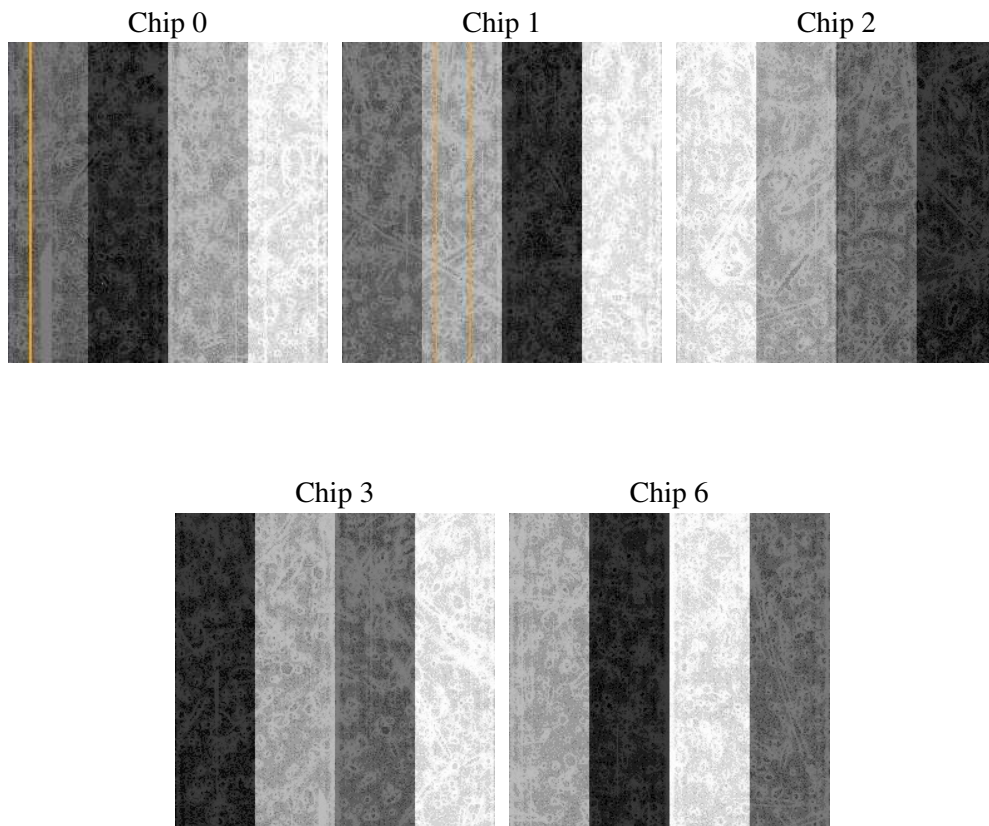
## 2 OBI

### 2.1 OBI

#### 2.1.1 Images



#### 2.1.2 Bias



### 2.1.3 Parameters

obi_num	0
ascdsver	7.6.7.2
caldbver	3.2.1
date	2006-04-26T18:58:28
revision	3

sched_exp_time	25000.000000
ontime	25187.752140313
ontime0	25184.611189991
ontime1	25190.893140584
ontime2	25184.611189991
ontime3	25187.752140313
ontime6	25190.893150508
l1events	757476

### 2.1.4 Events

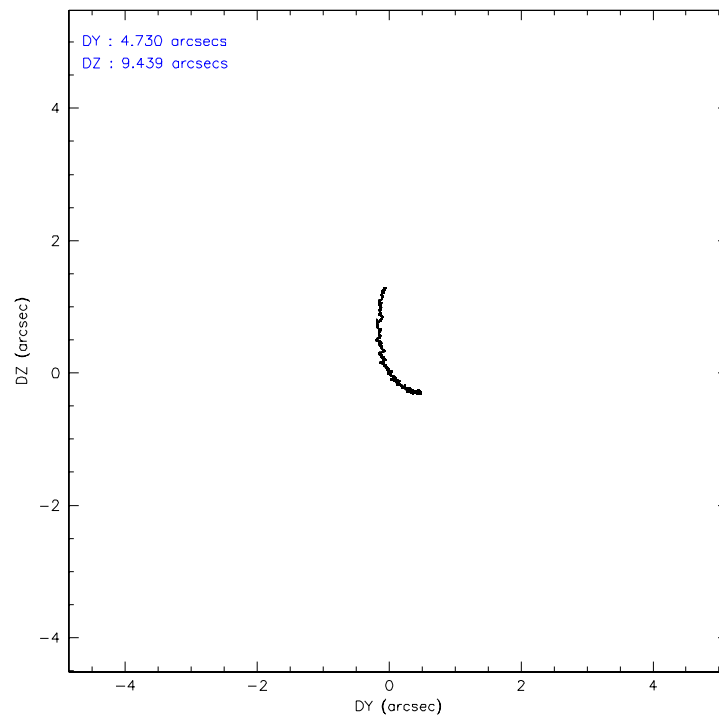
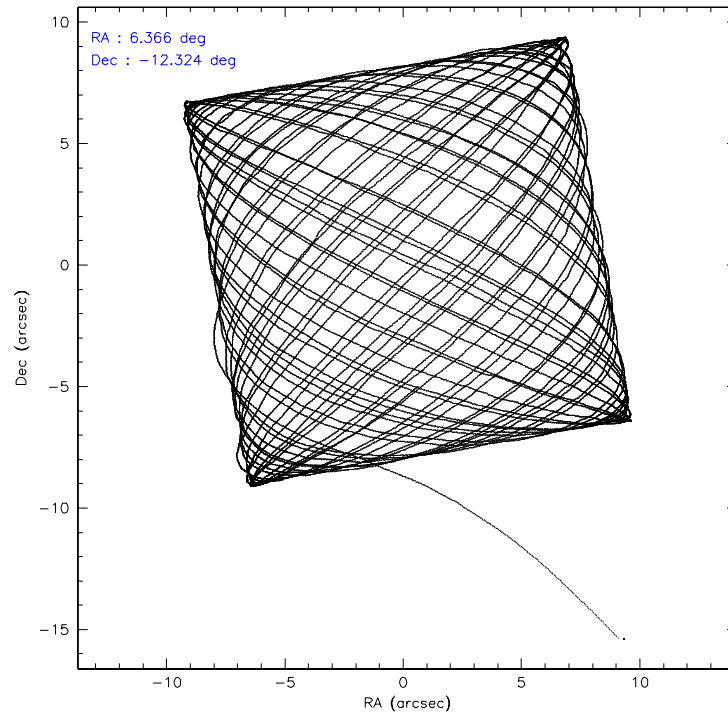
	ccd 0	ccd 1	ccd 2	ccd 3	ccd 6
level 1 events	141597	144426	161653	156179	153621
rejected events	126560	127492	146773	138939	137924
rejected %	89%	88%	90%	88%	89%

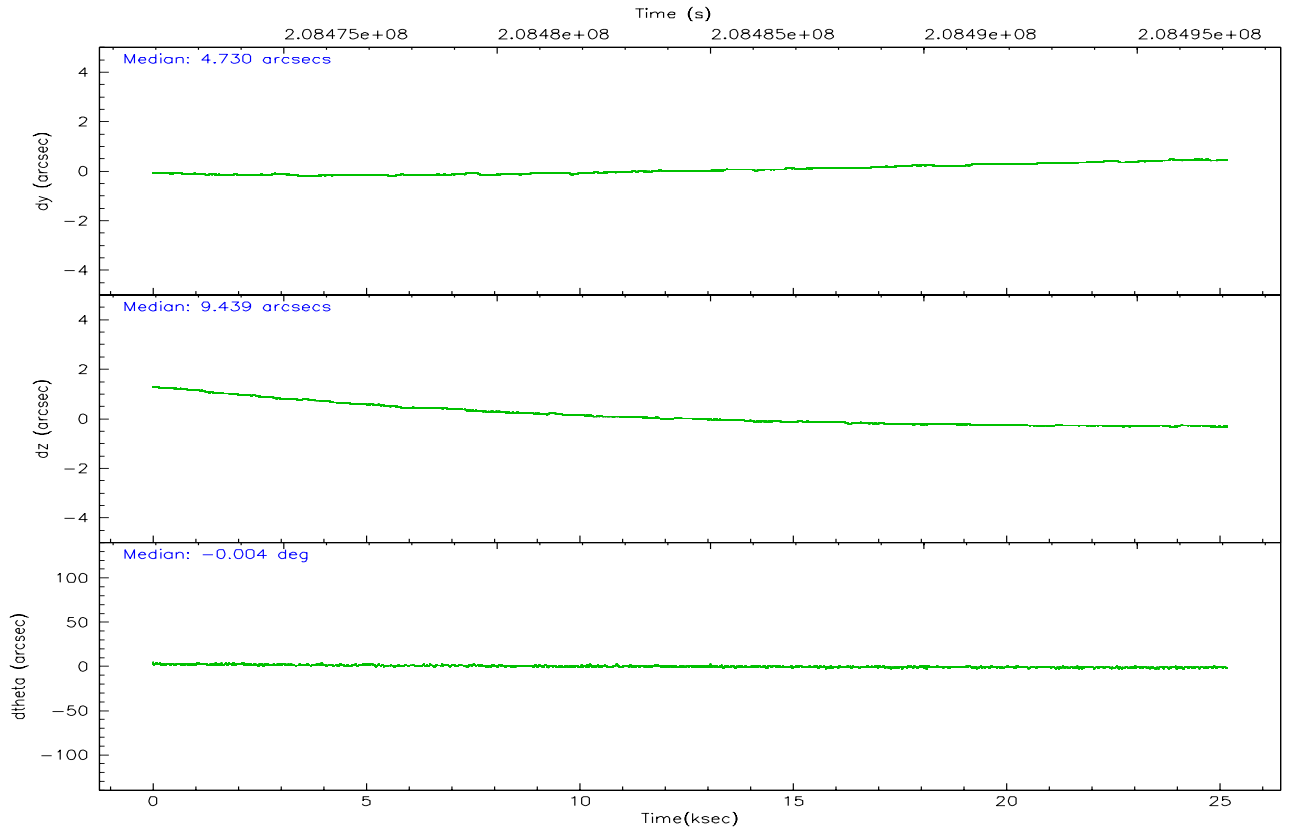
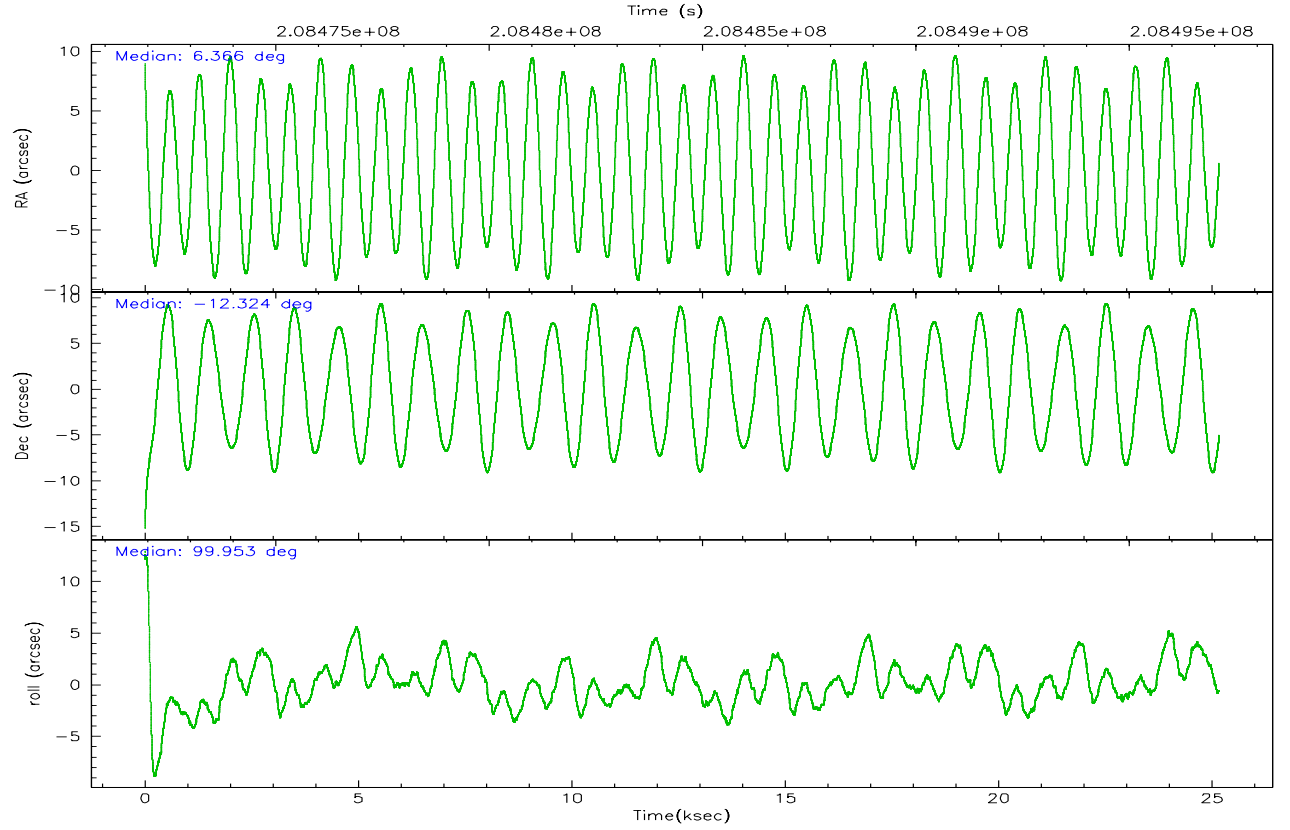
	ccd 0	ccd 1	ccd 2	ccd 3	ccd 6
grade 0 events	5084	6133	5331	7533	5628
	3%	4%	3%	4%	3%
grade 1 events	88	88	83	101	74
	0%	0%	0%	0%	0%
grade 2 events	3481	3624	3415	3260	3316
	2%	2%	2%	2%	2%
grade 3 events	1741	1899	1608	1760	1766
	1%	1%	0%	1%	1%
grade 4 events	1706	1895	1700	1766	1714
	1%	1%	1%	1%	1%
grade 5 events	5397	5834	5235	6079	5921
	3%	4%	3%	3%	3%
grade 6 events	3043	3405	2847	2943	3303
	2%	2%	1%	1%	2%
grade 7 events	121057	121548	141434	132737	131899
	85%	84%	87%	84%	85%

## 2.2 Compared Parameters

Parameter	Planned	Actual	Parameter	Planned	Actual
Instrument	ACIS	ACIS	Obspar format version number	6	6
Detector	ACIS-01236	ACIS-01236	Obspar file type	PREDICTED	ACTUAL
Grating	NONE	NONE	Obspar update status	NONE	UPDATED
Data mode	VFAINT	VFAINT	On-chip summing requested	N	N
Observation mode	POINTING	POINTING	Subarray requested	NONE	NONE
Pointing RA	6.383821	6.365713263996326	Alternating exposures requested	N	N
Pointing Dec	-12.345180	-12.32429233575164	Primary exposure time	0.000000	3.1
Pointing Roll	99.754472	99.95928921810111			
SIM focus pos (mm)	-0.782348	-0.7809083437167272			
SIM defocus (mm)	0	0.001439871863259334			
SIM translation stage pos (mm)	-225.840463	-225.8433433320239			
SIM translation stage offset (mm)	-7.752	-7.749109670905796			
Observation start time	208472106.184000	208471107.9669			
Observation start date	2004-08-09T20:54:02	2004-08-09T20:38:27			
Observation end time	208497106.184000	208498498.01812			
Observation end date	2004-08-10T03:50:42	2004-08-10T04:14:58			
Read mode	TIMED	TIMED			

## 2.3 Aspect





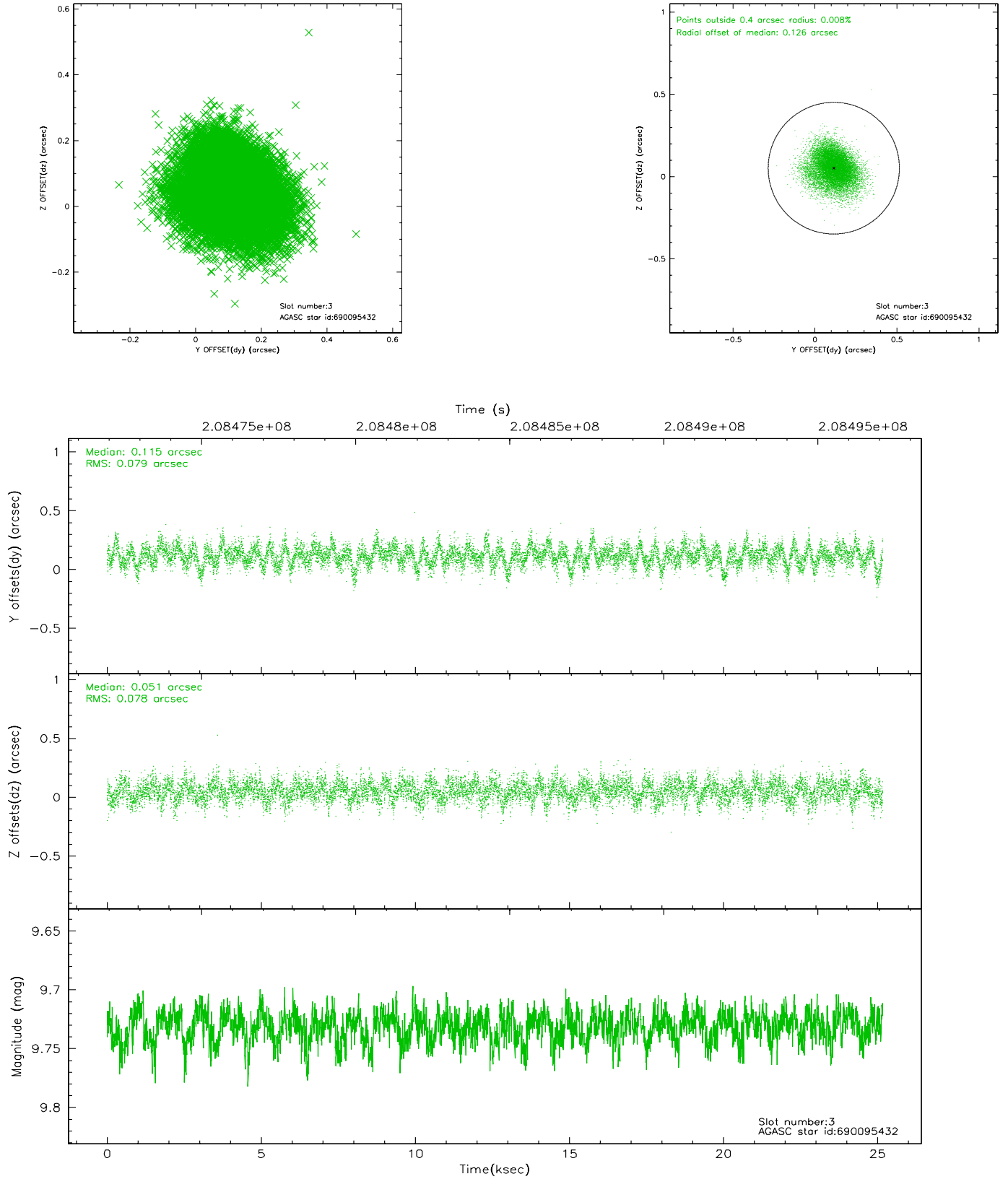
### Slot Statistics

slot	status	id	mag	n_pts	med_dy	med_dz	dr1	dr2	ra	dec	mean_y	mean_z
0	FID	ACIS-I-2	7.17	6139	-0.044	-0.019	0.012	0.028	0.000000	0.000000	-759.79	-997.51
1	FID	ACIS-I-4	7.14	6138	0.003	0.039	0.008	0.014	0.000000	0.000000	2154.17	908.67
2	FID	ACIS-I-5	7.21	6139	-0.060	0.050	0.011	0.020	0.000000	0.000000	-1813.13	905.56
3	GUIDE	690095432	9.73	12266	0.115	0.051	0.118	0.194	6.686559	-12.321914	-97.87	-1063.30
4	GUIDE	690095936	9.63	12267	-0.009	-0.162	0.117	0.196	6.226991	-11.967899	1432.28	314.28
5	GUIDE	690096648	9.88	12273	-0.049	0.152	0.169	0.296	6.890979	-12.026292	827.77	-1953.89
6	GUIDE	690097384	8.88	12274	-0.166	-0.111	0.073	0.116	6.159542	-12.236030	520.78	711.04
7	GUIDE	690488576	9.07	12271	0.110	0.071	0.087	0.148	6.760281	-12.699830	-1482.61	-1086.47

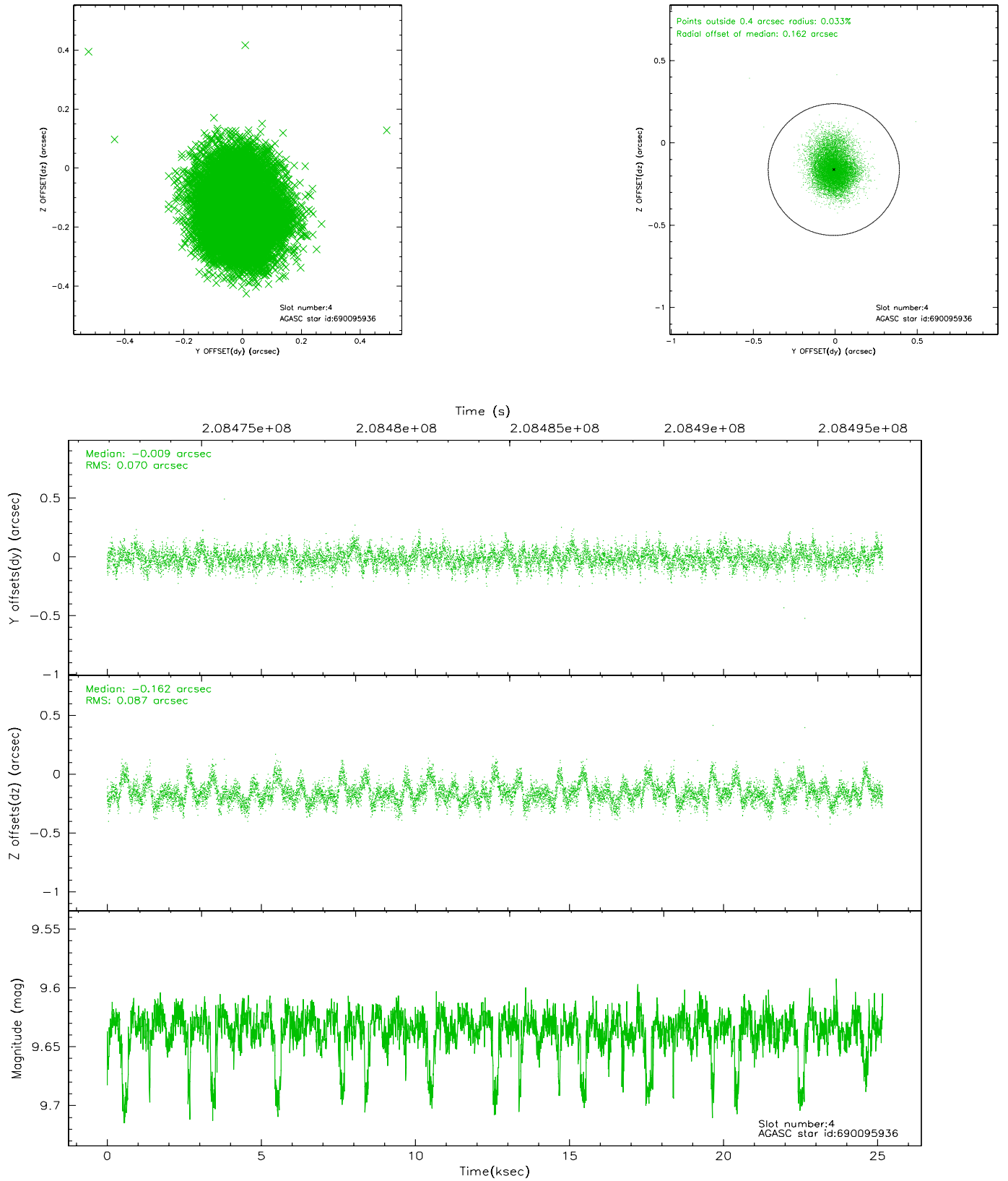


## 2.4 Star Slots

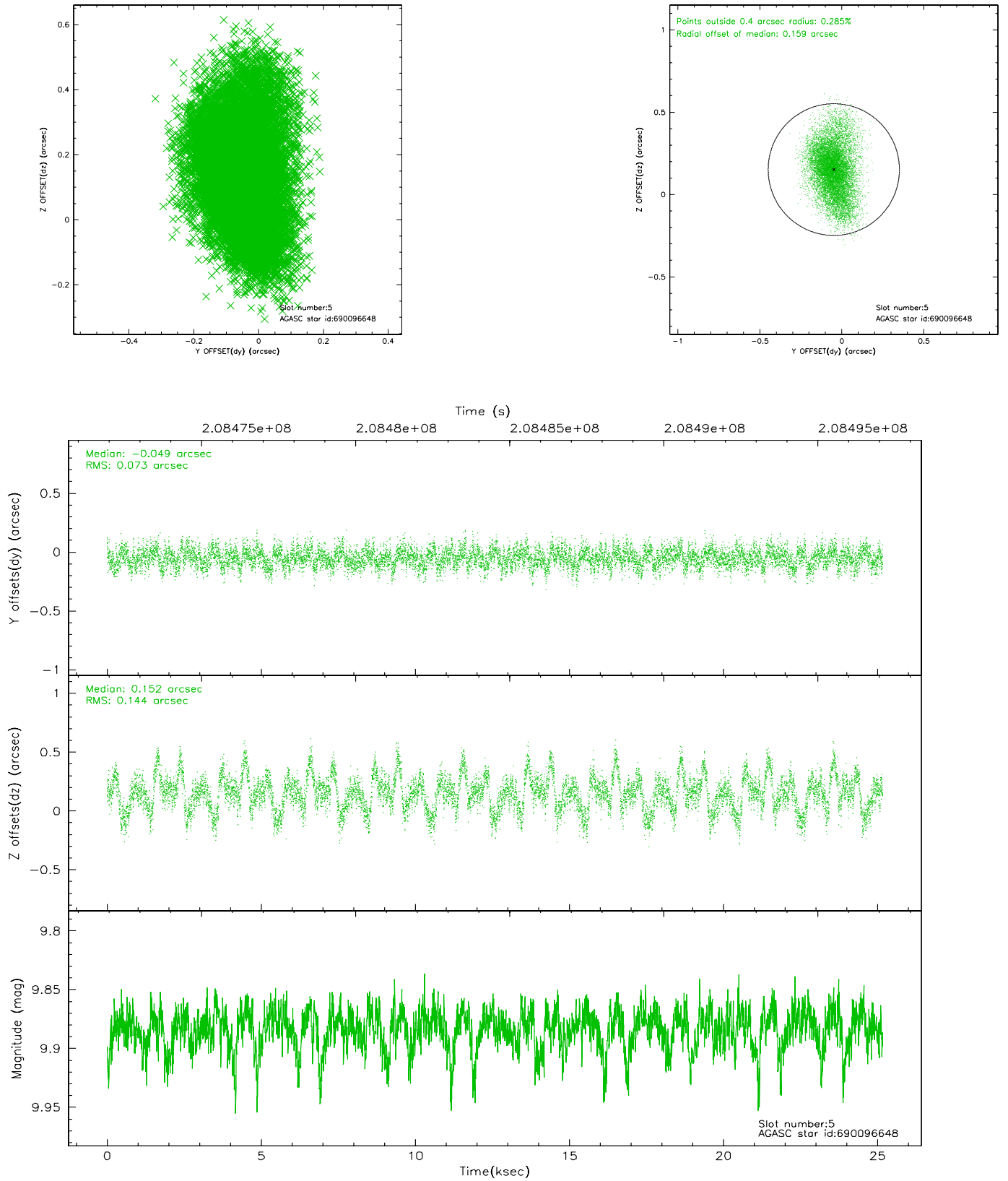
### 2.4.1 Slot 3



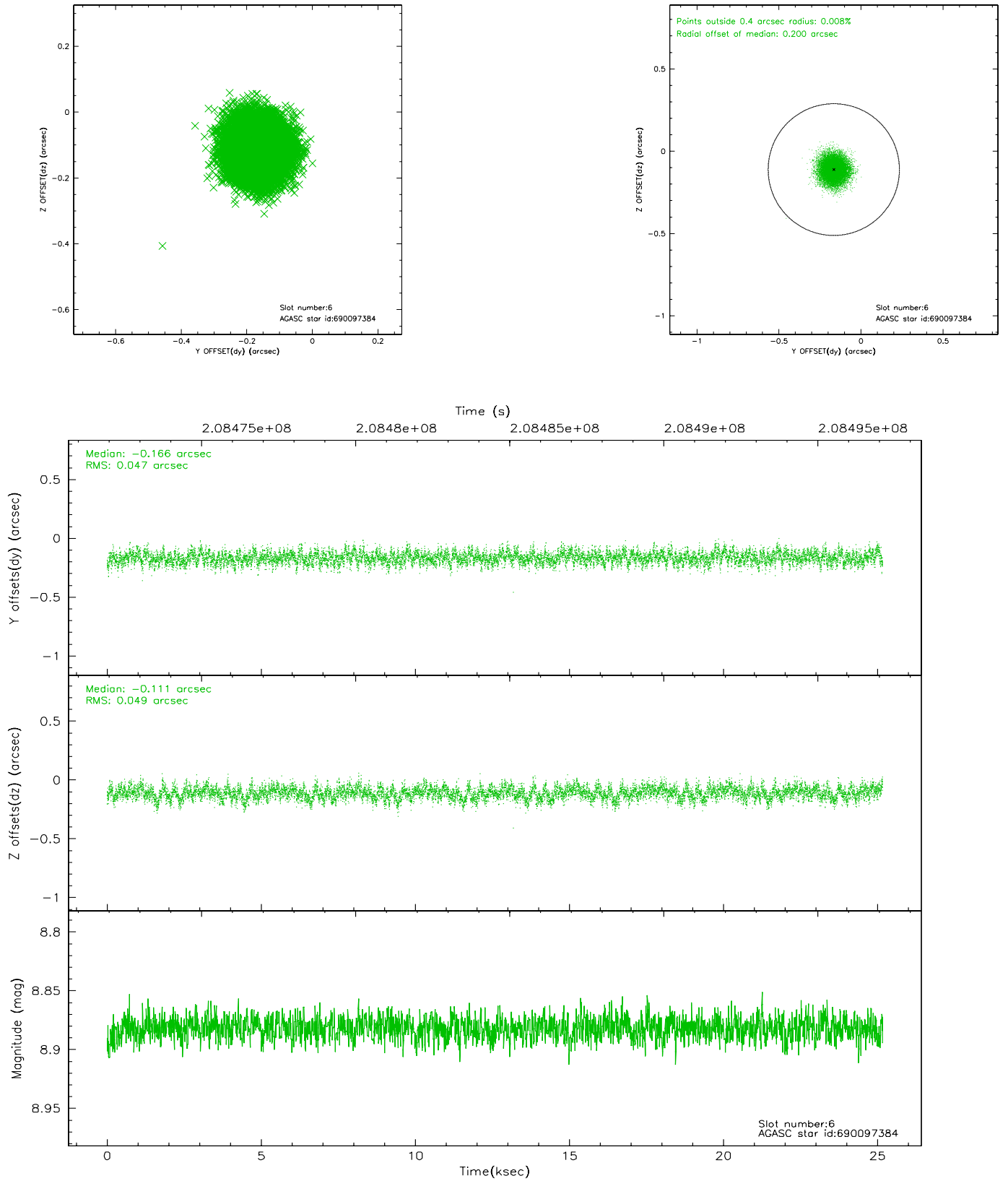
## 2.4.2 Slot 4



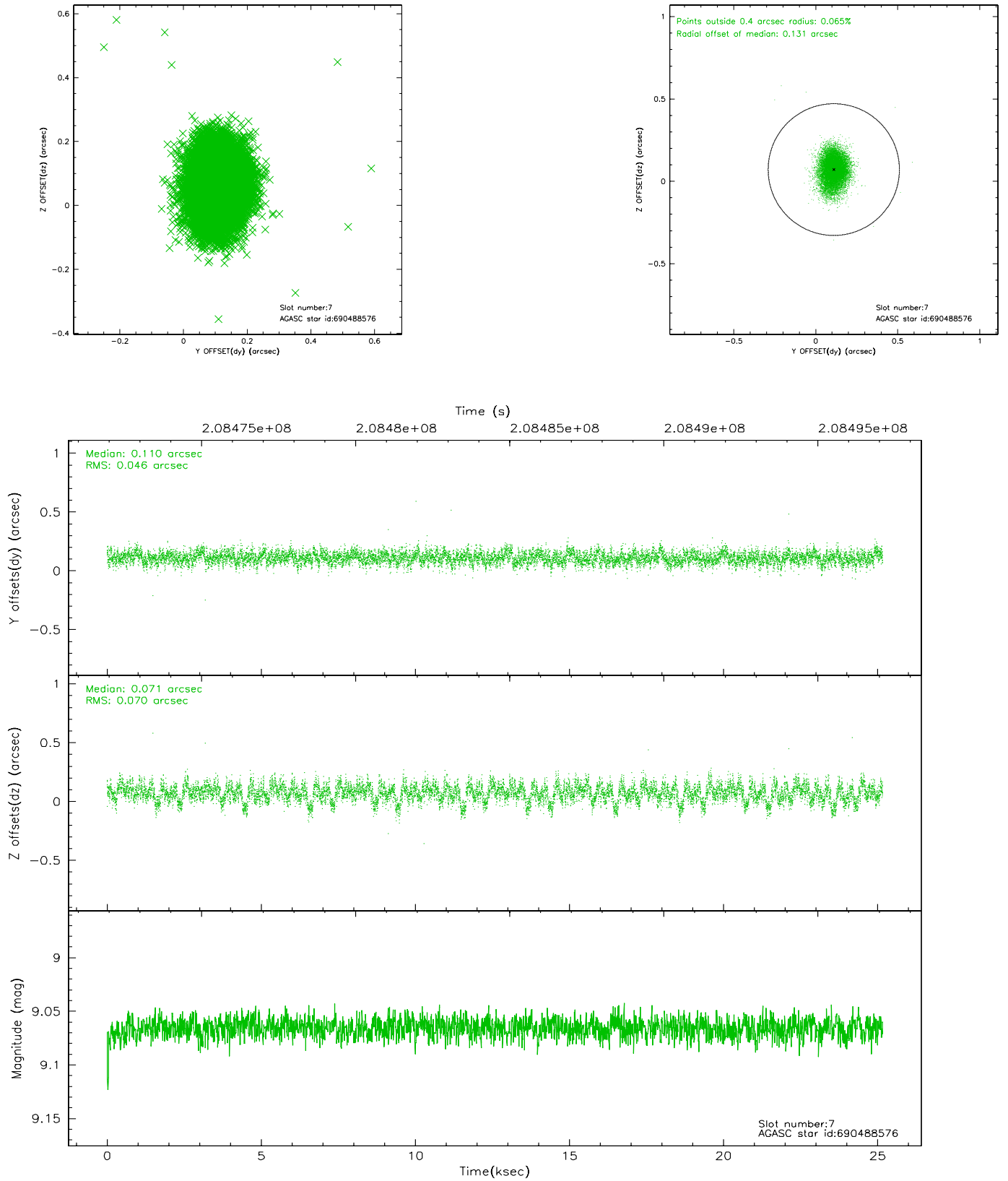
### 2.4.3 Slot 5



## 2.4.4 Slot 6

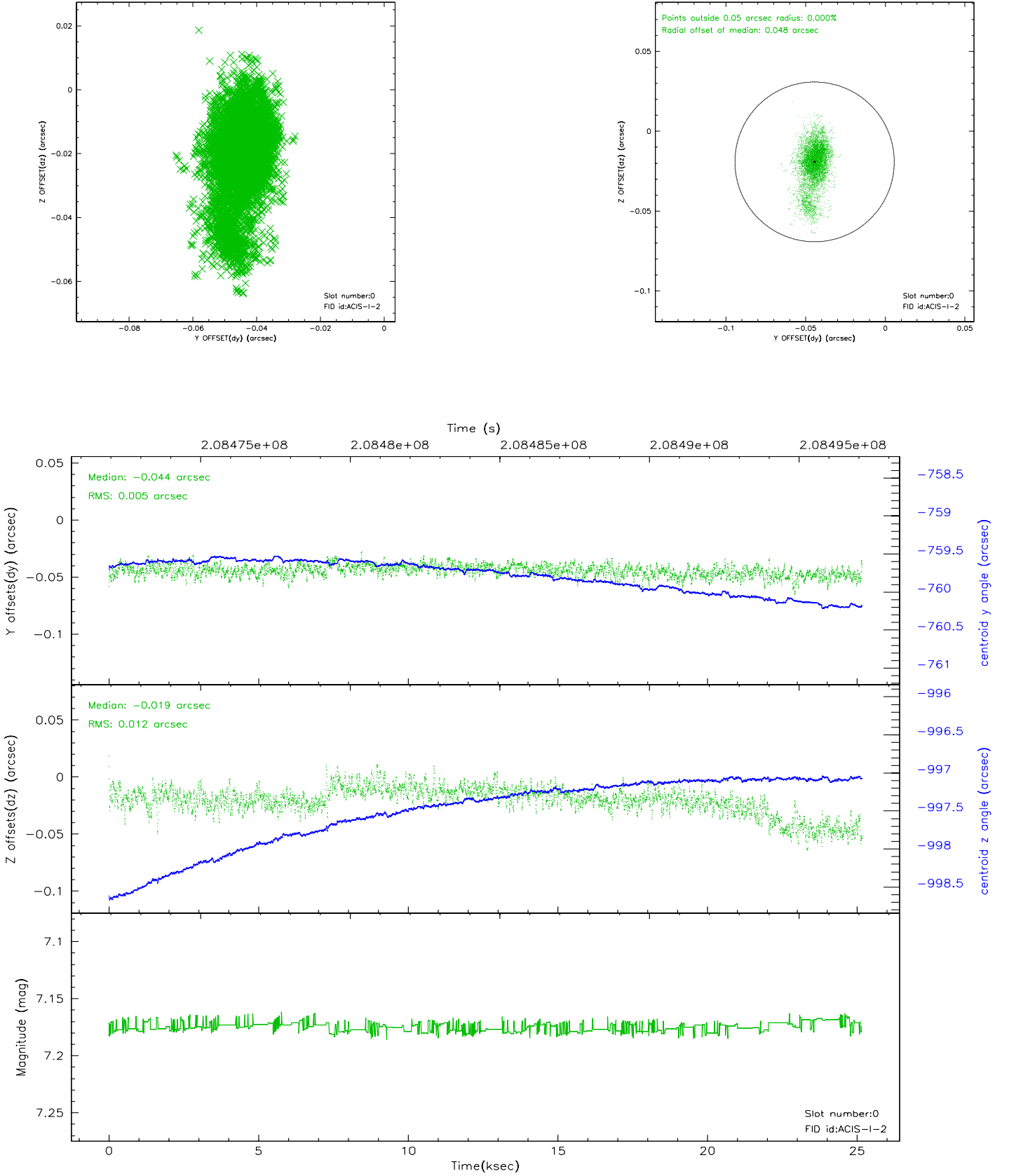


## 2.4.5 Slot 7

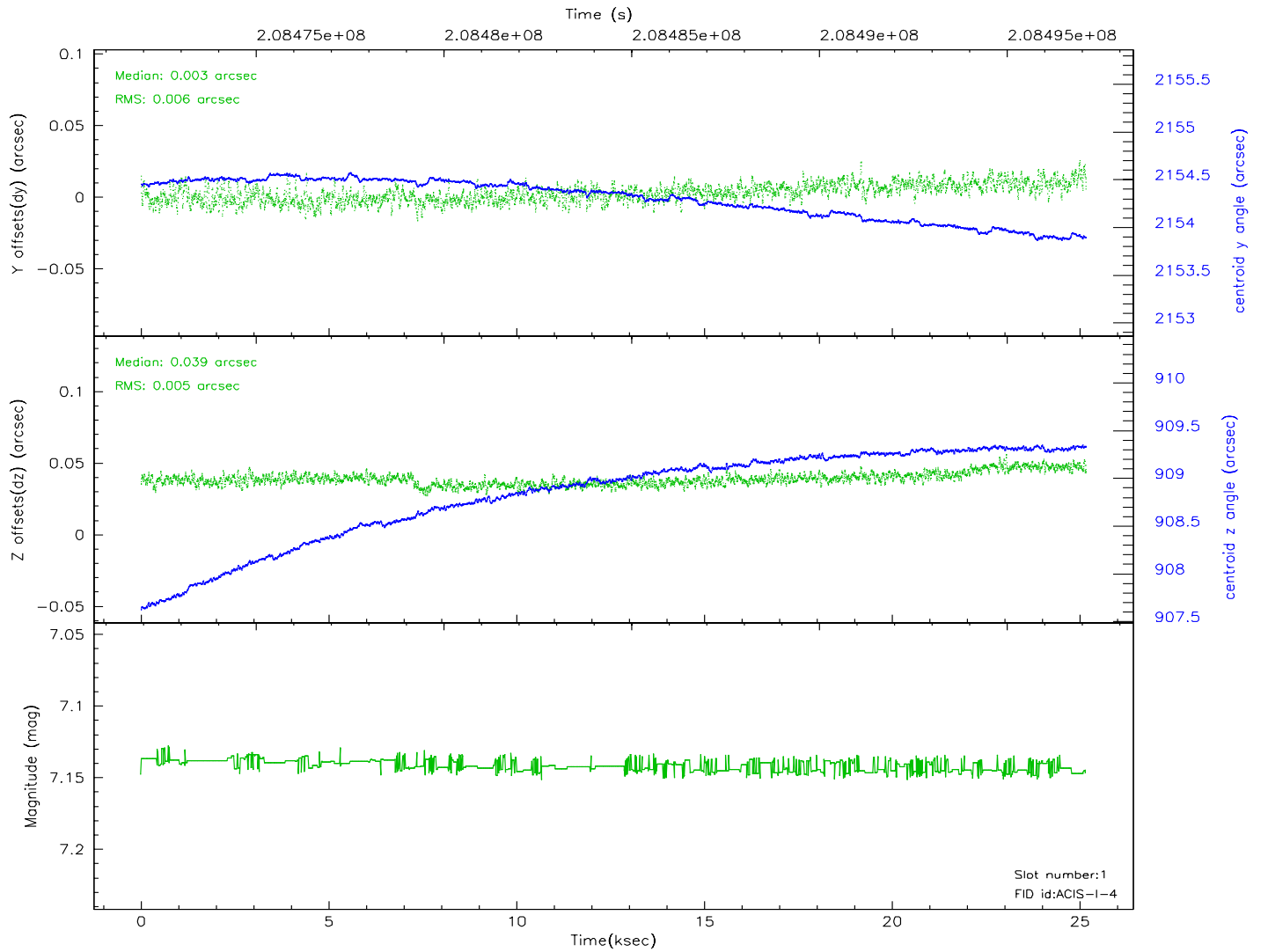
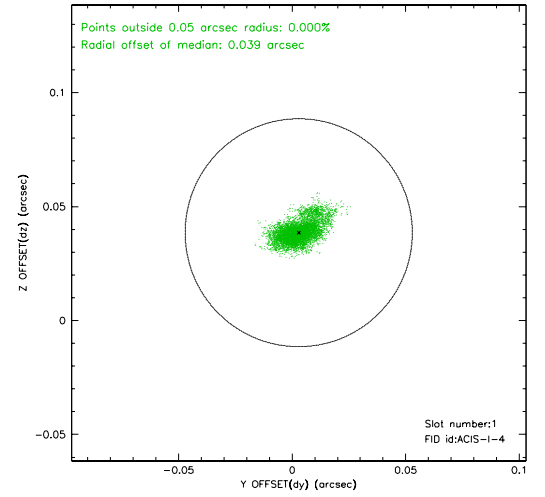
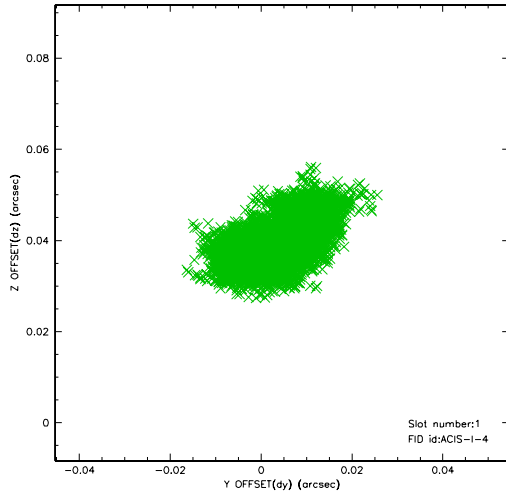


## 2.5 FID Slots

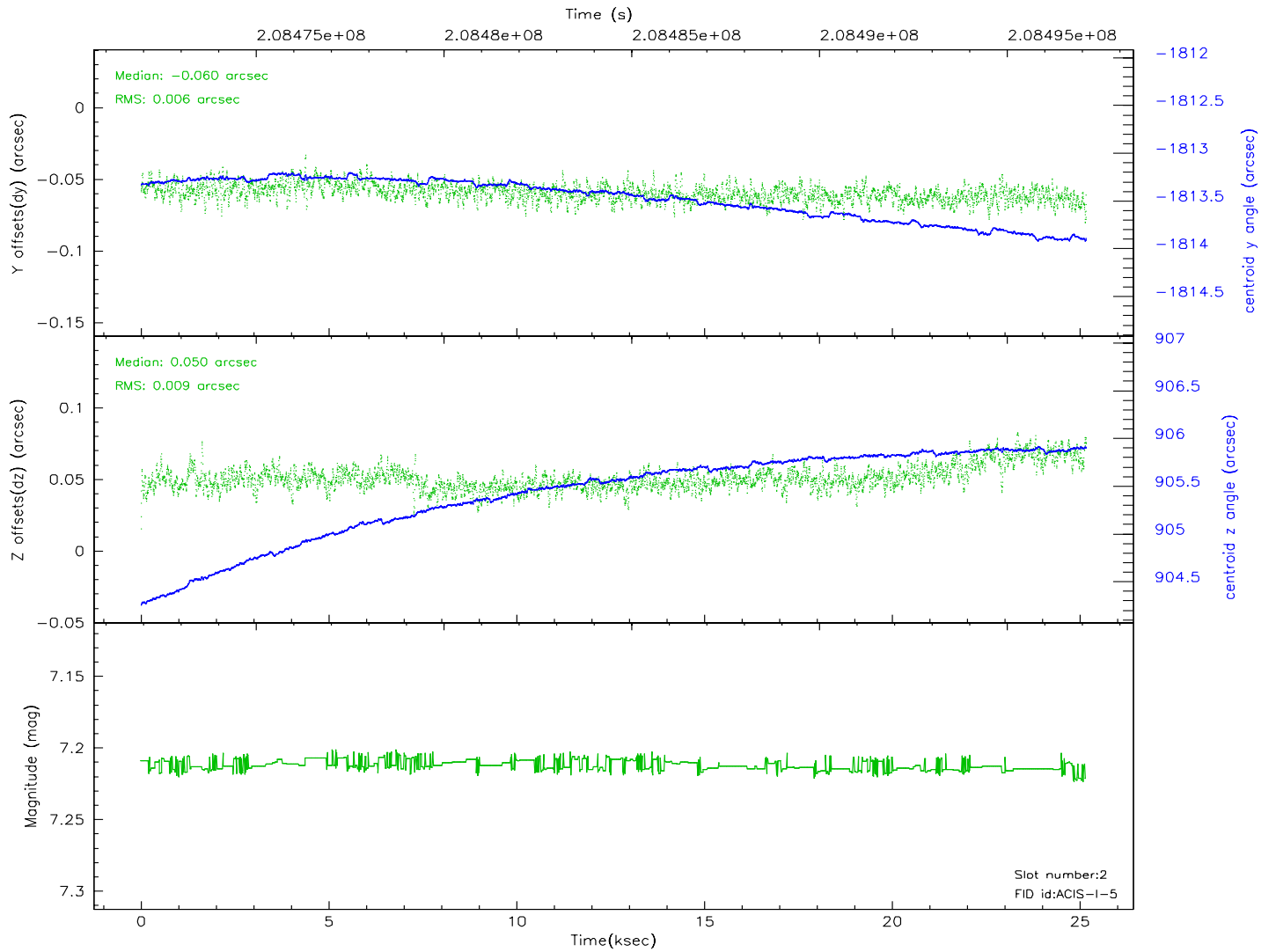
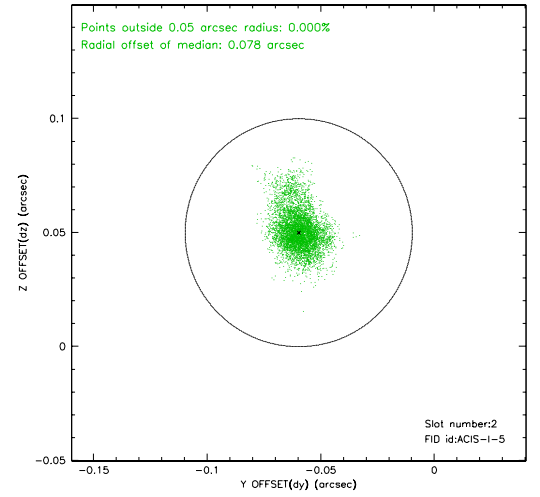
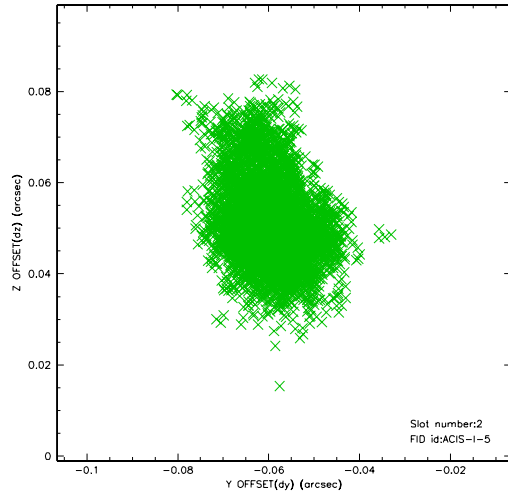
### 2.5.1 Slot 0



## 2.5.2 Slot 1

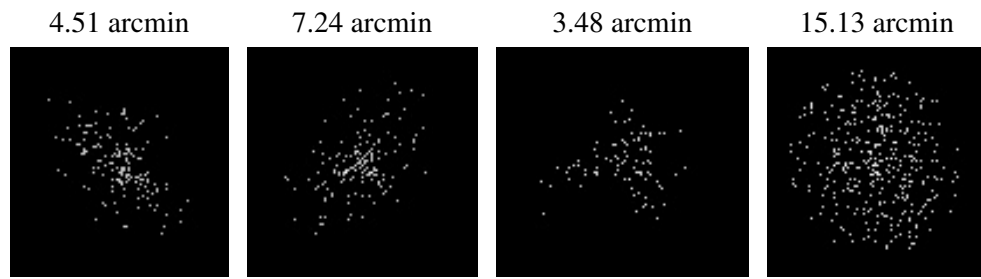


### 2.5.3 Slot 2





### 3 Point Sources



## A Summary

### A.1 Status

V&V Scientist	Jen Lauer
V&V Date (YYYY-MM-DD)	2006.04.27
V&V Edition	1
V&V Disposition and Status	OK
V&V Charge Time	25.156

### A.2 Comments