

V&V Reference Report

L2 ASCDS Version : 7.6.7.2

Observation 5007 - L2 Version 001
Chandra X-Ray Center

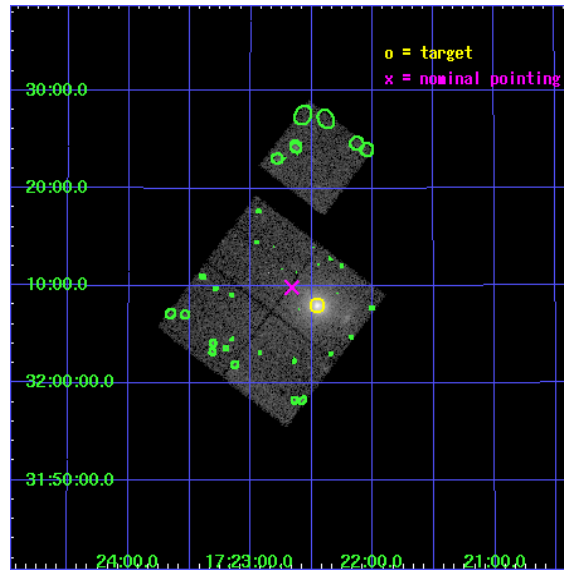
L2 Processing Date : Jun 6 2006

Contents

1	Front	2
2	OBI	3
2.1	OBI	3
2.1.1	Images	3
2.1.2	Bias	3
2.1.3	Parameters	4
2.1.4	Events	4
2.2	Compared Parameters	5
2.3	Aspect	6
2.4	Star Slots	9
2.4.1	Slot 3	9
2.4.2	Slot 4	10
2.4.3	Slot 5	11
2.4.4	Slot 6	12
2.4.5	Slot 7	13
2.5	FID Slots	14
2.5.1	Slot 0	14
2.5.2	Slot 1	15
2.5.3	Slot 2	16
3	Point Sources	17
A	Summary	18
A.1	Status	18
A.2	Comments	18

1 Front

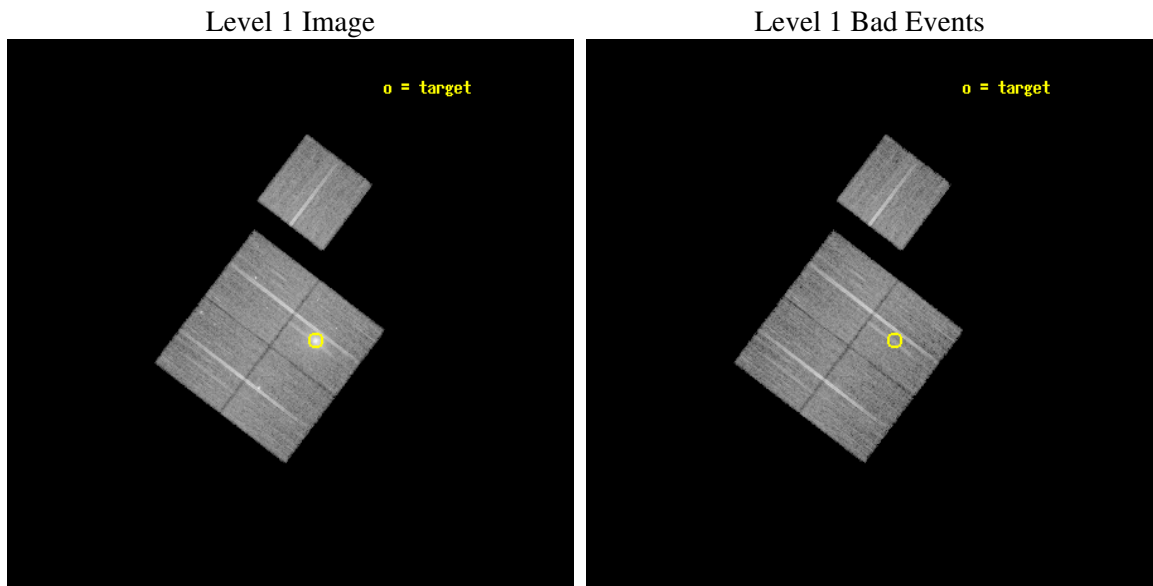
seq_num	800450
obs_id	5007
title	Cluster studies: Determination of H0/q0
observer	DR. LEON VANSPEYBROECK
object	A2261
dtcycle	0
cycle	P
ra_targ	260.613333
dec_targ	32.132778
ra_nom	260.6657677542
dec_nom	32.164048604025
roll_nom	37.248451487699
revision	2
ontime	24638.717992216
livetime	24316.795002888
ontime0	24641.858992368
ontime1	24638.717992157
ontime2	24644.999952614
ontime3	24638.717992216
ontime6	24644.999952614
l2events	84323



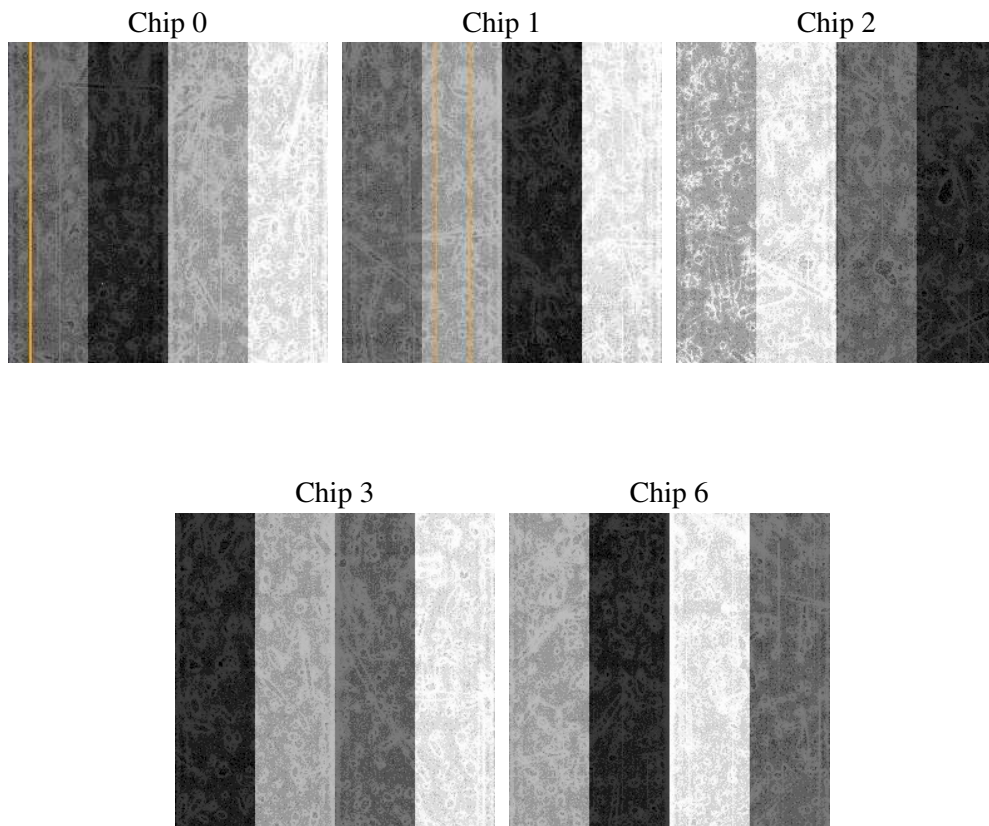
2 OBI

2.1 OBI

2.1.1 Images



2.1.2 Bias



2.1.3 Parameters

obi_num	1
ascdsver	7.6.7.2
caldbver	3.2.2
date	2006-06-06T19:44:26
revision	2

sched_exp_time	24526.771000
ontime	24644.299414188
ontime0	24647.440434247
ontime1	24644.299434036
ontime2	24650.581374586
ontime3	24644.299414188
ontime6	24650.581374586
l1events	635442

2.1.4 Events

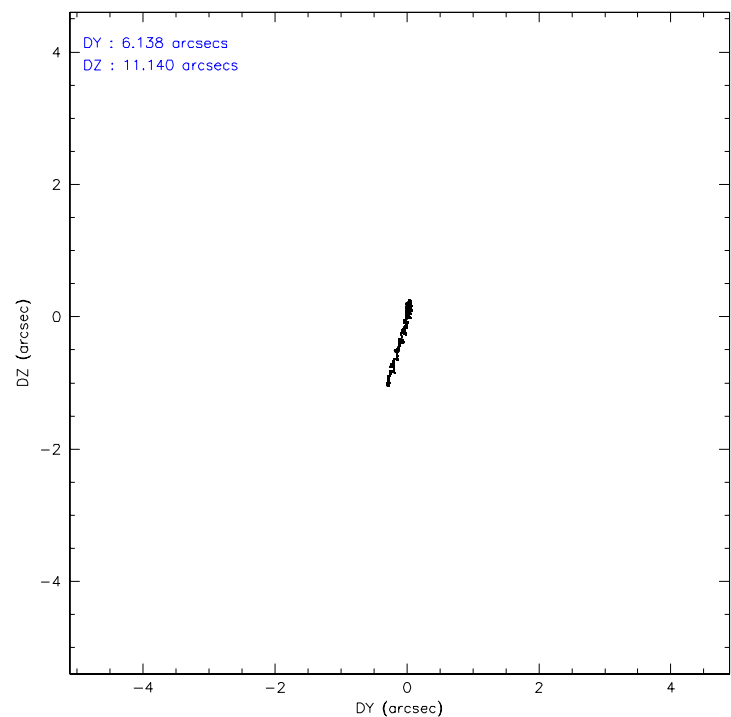
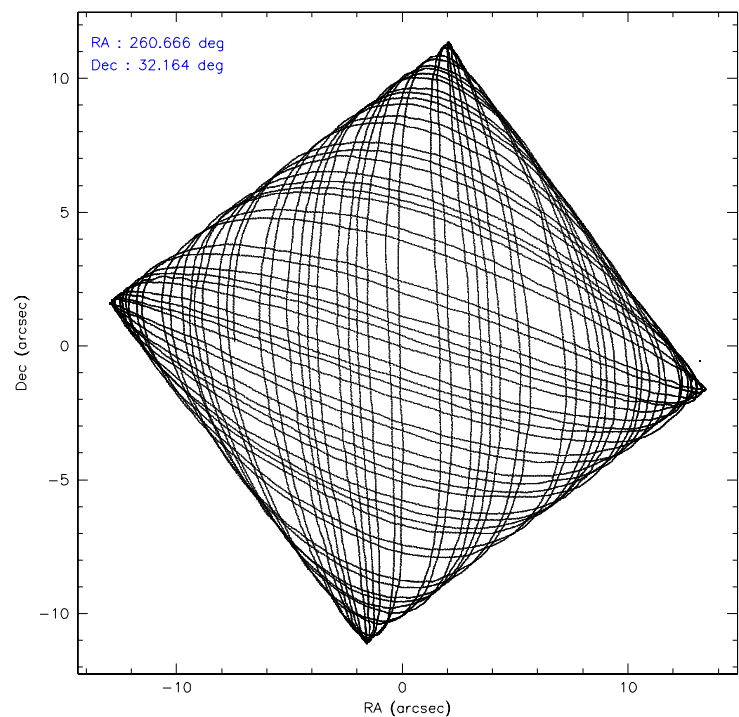
	ccd 0	ccd 1	ccd 2	ccd 3	ccd 6
level 1 events	116788	115648	129992	150818	122196
rejected events	103621	100232	116288	109690	109381
rejected %	88%	86%	89%	72%	89%

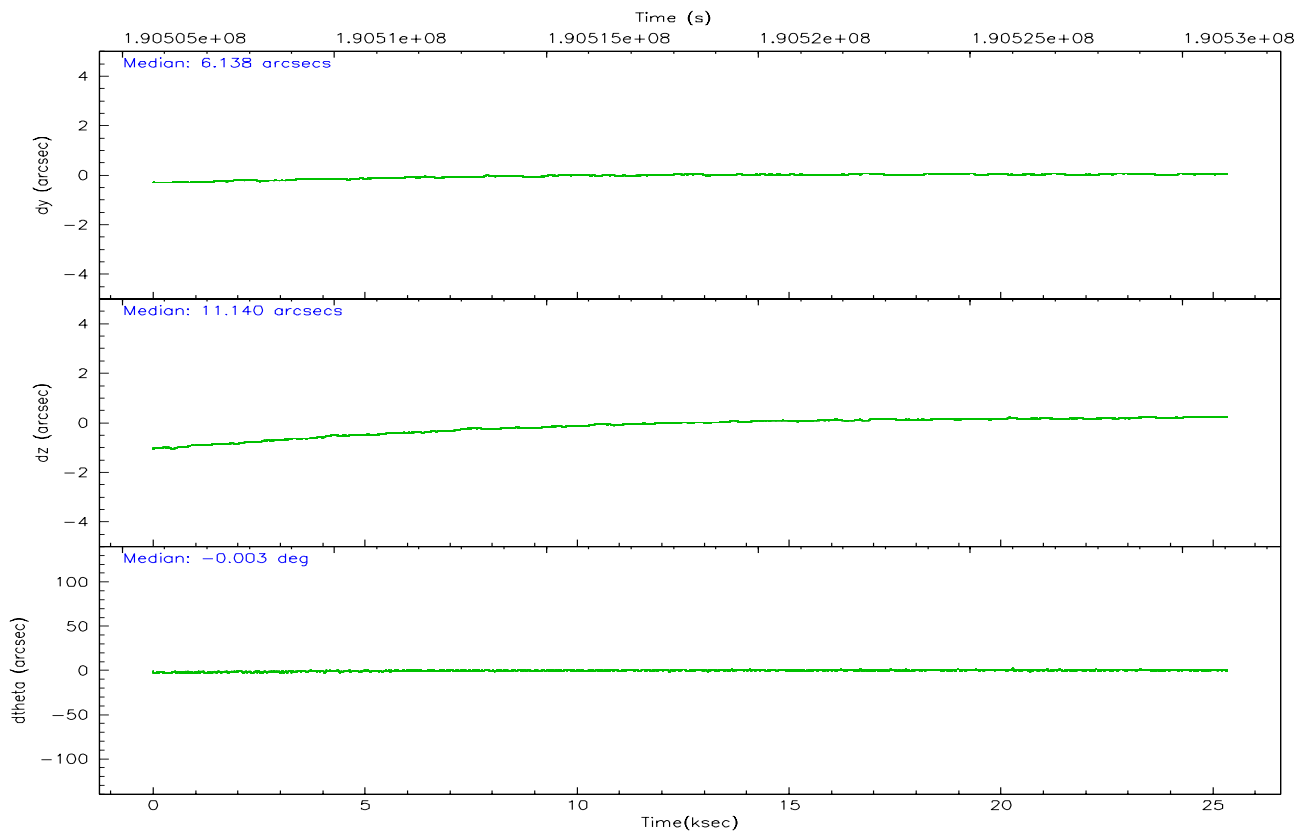
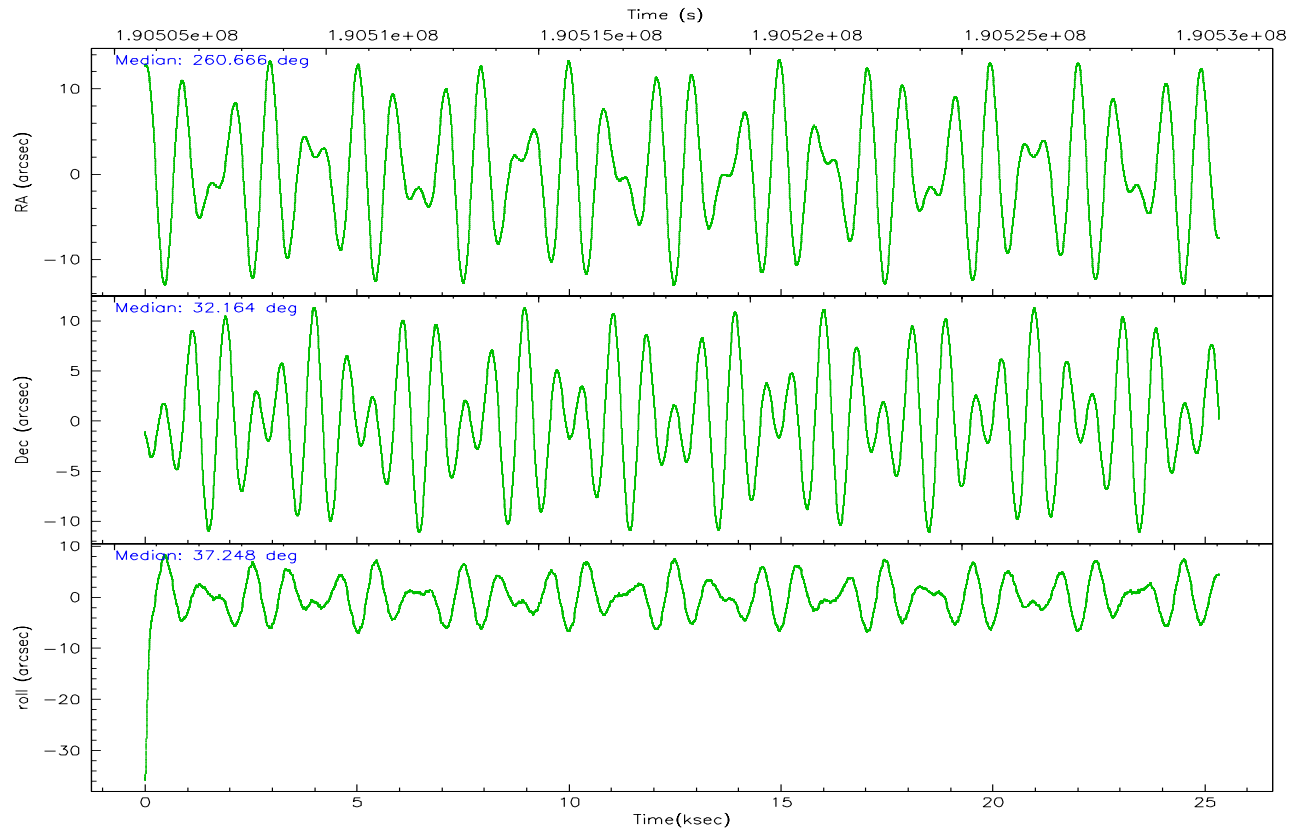
	ccd 0	ccd 1	ccd 2	ccd 3	ccd 6
grade 0 events	4803	6258	5729	28362	4531
	4%	5%	4%	18%	3%
grade 1 events	66	61	74	178	40
	0%	0%	0%	0%	0%
grade 2 events	2978	3115	2885	5310	2693
	2%	2%	2%	3%	2%
grade 3 events	1523	1667	1428	2192	1401
	1%	1%	1%	1%	1%
grade 4 events	1392	1571	1405	2249	1398
	1%	1%	1%	1%	1%
grade 5 events	4506	4789	4172	5002	4911
	3%	4%	3%	3%	4%
grade 6 events	2475	2810	2262	3023	2792
	2%	2%	1%	2%	2%
grade 7 events	99045	95377	112037	104502	104430
	84%	82%	86%	69%	85%

2.2 Compared Parameters

Parameter	Planned	Actual	Parameter	Planned	Actual
Instrument	ACIS	ACIS	Obspar format version number	6	6
Detector	ACIS-01236	ACIS-01236	Obspar file type	PREDICTED	ACTUAL
Grating	NONE	NONE	Obspar update status	NONE	UPDATED
Data mode	VFAINT	VFAINT	On-chip summing requested	N	N
Observation mode	POINTING	POINTING	Subarray requested	NONE	NONE
Pointing RA	260.653385	260.6657677542033	Alternating exposures requested	N	N
Pointing Dec	32.138752	32.16404860402479	Primary exposure time	0.000000	3.1
Pointing Roll	37.046370	37.24845148769896			
SIM focus pos (mm)	-0.782348	-0.7809083437167272			
SIM defocus (mm)	0	0.001439871863259334			
SIM translation stage pos (mm)	-225.840463	-225.8433433320239			
SIM translation stage offset (mm)	-7.752	-7.749109670905796			
Observation start time	190506536.184000	190505260.80032			
Observation start date	2004-01-14T22:27:52	2004-01-14T22:07:40			
Observation end time	190531063.184000	190531377.28896			
Observation end date	2004-01-15T05:16:39	2004-01-15T05:22:57			
Read mode	TIMED	TIMED			

2.3 Aspect



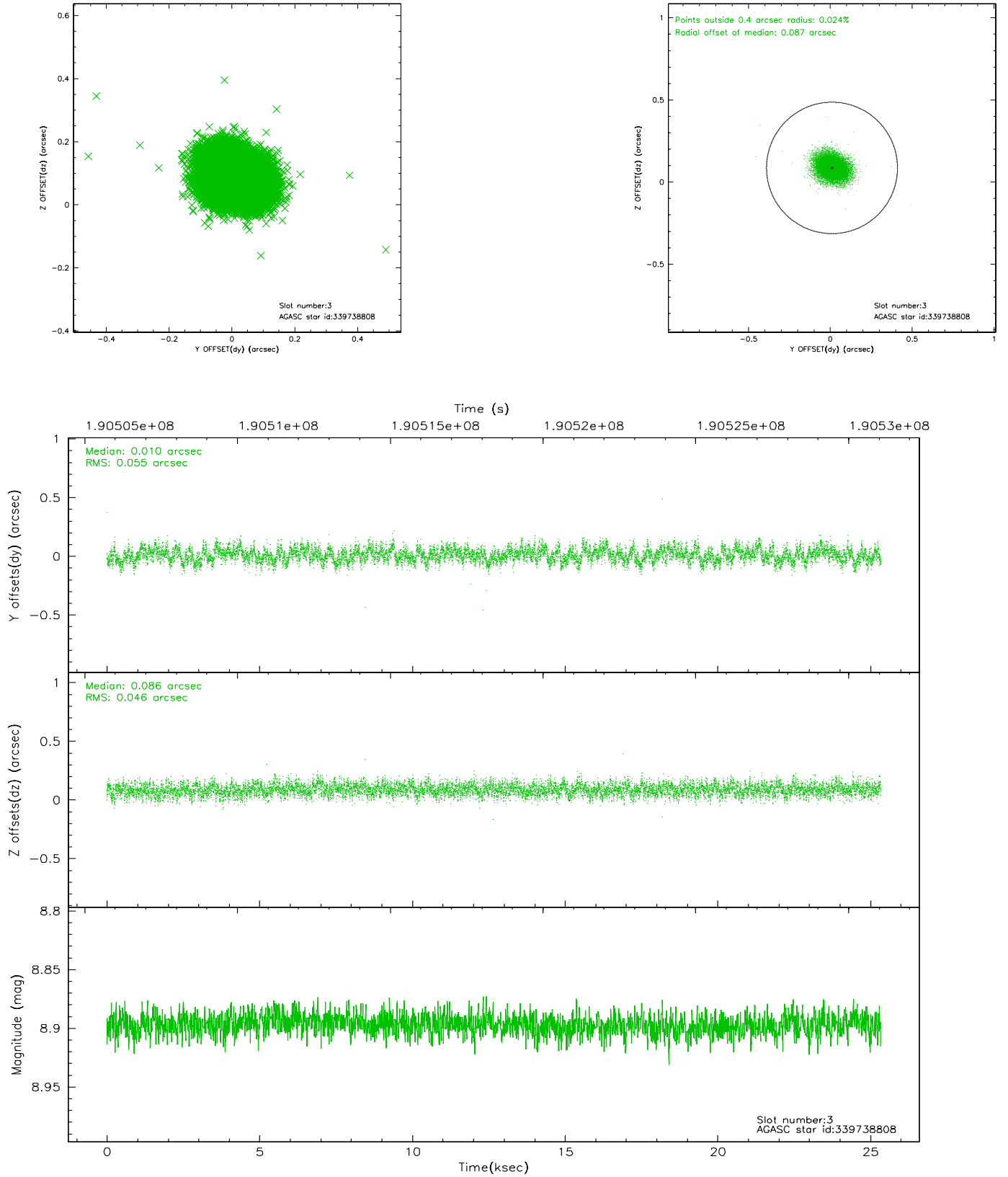


Slot Statistics

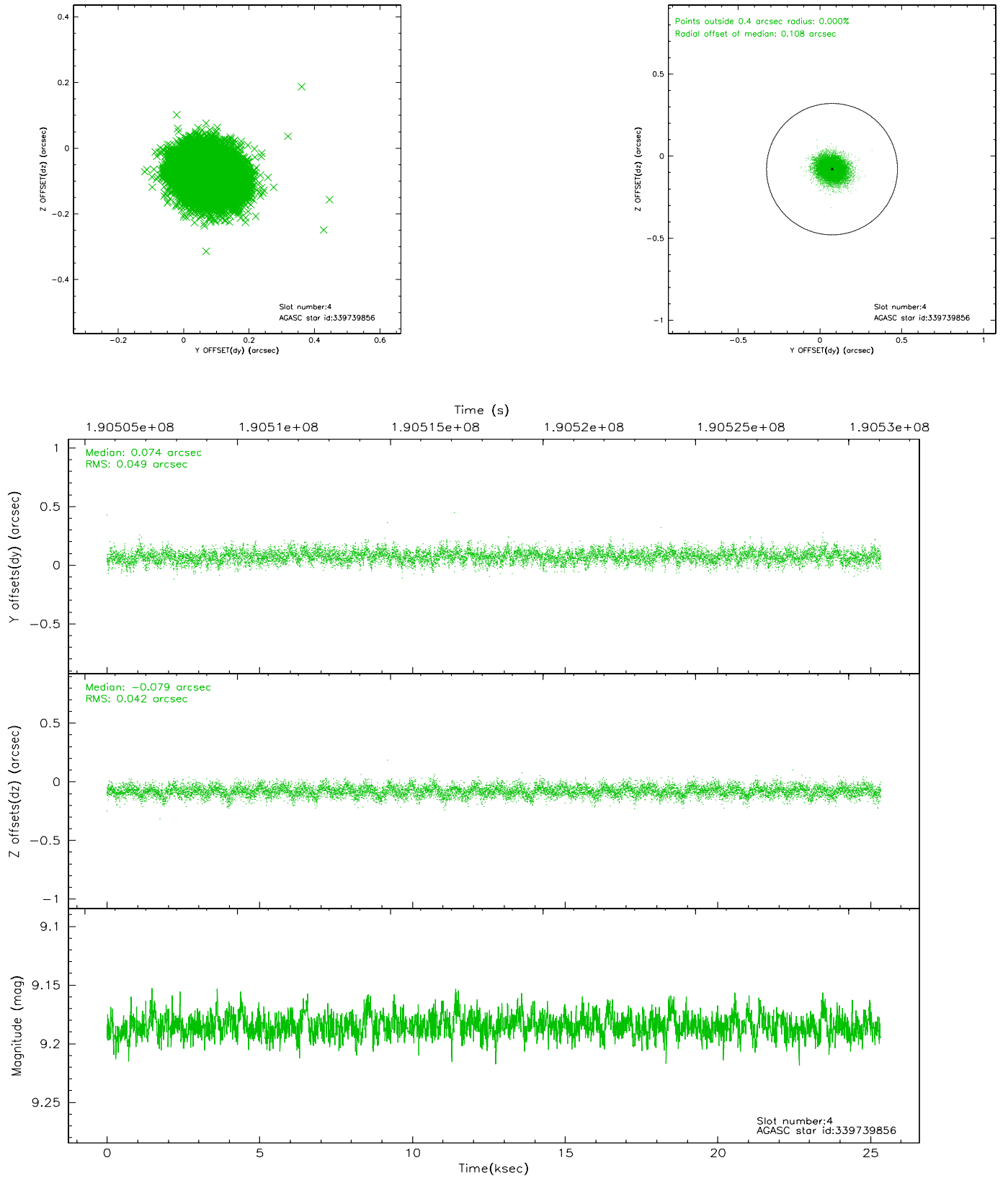
slot	status	id	mag	n_pts	med_dy	med_dz	dr1	dr2	ra	dec	mean_y	mean_z
0	FID	ACIS-I-1	7.23	6180	0.084	-0.149	0.012	0.023	0.000000	0.000000	933.57	-993.71
1	FID	ACIS-I-4	7.14	6180	-0.075	0.088	0.011	0.028	0.000000	0.000000	2153.05	907.25
2	FID	ACIS-I-5	7.22	6180	-0.106	0.133	0.008	0.027	0.000000	0.000000	-1814.51	904.23
3	GUIDE	339738808	8.90	12351	0.010	0.086	0.076	0.122	260.388344	31.860977	-1248.64	-309.06
4	GUIDE	339739856	9.18	12356	0.074	-0.079	0.069	0.112	260.043055	31.783835	-2257.26	109.63
5	GUIDE	340264720	9.40	12354	0.069	0.048	0.089	0.149	260.154315	32.131036	-1229.03	897.51
6	GUIDE	340272152	9.24	12357	0.121	-0.041	0.081	0.131	259.948756	32.115258	-1761.48	1232.65
7	GUIDE	341979192	6.64	12361	-0.274	-0.016	0.045	0.076	261.163651	32.670375	2389.10	599.11

2.4 Star Slots

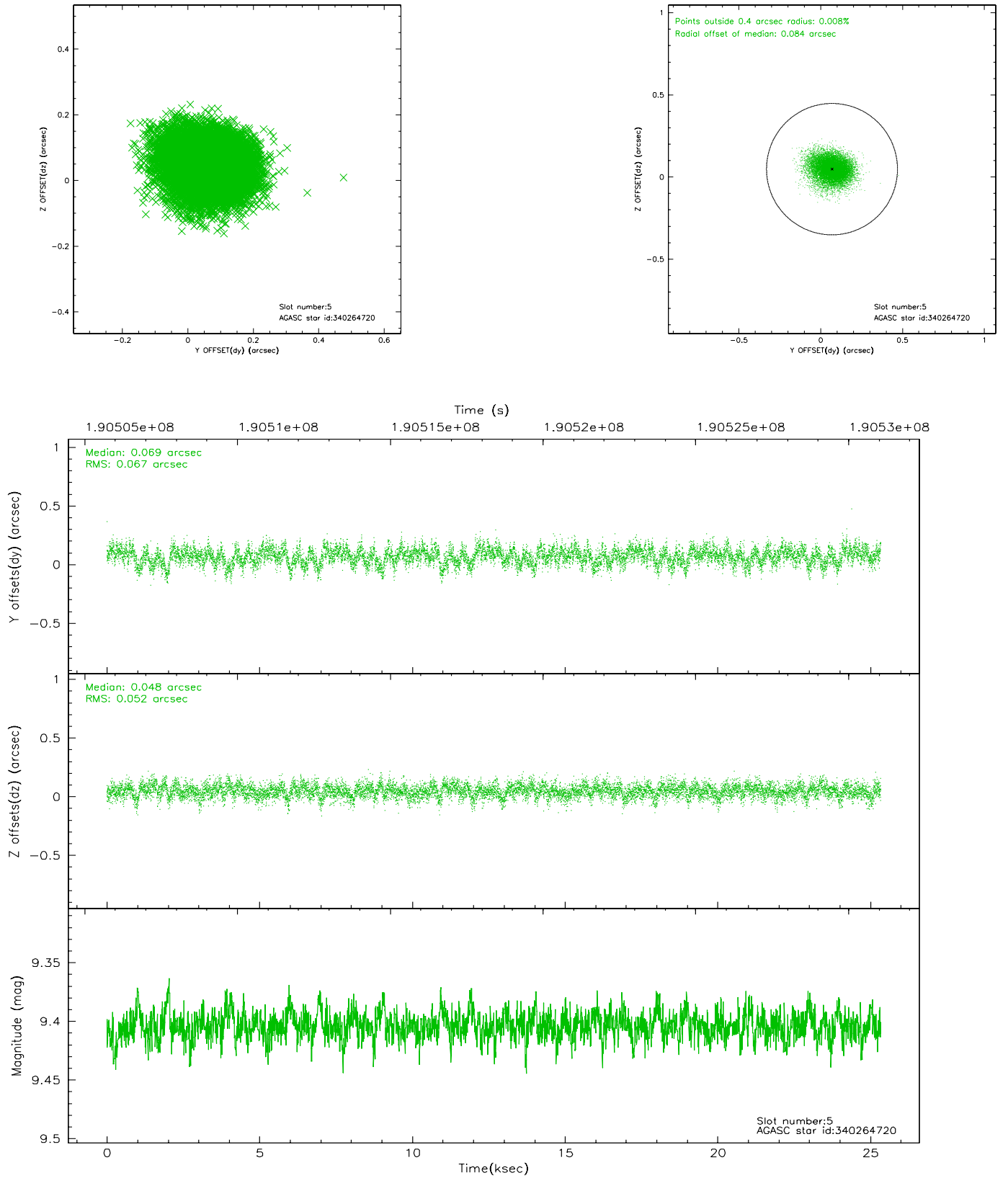
2.4.1 Slot 3



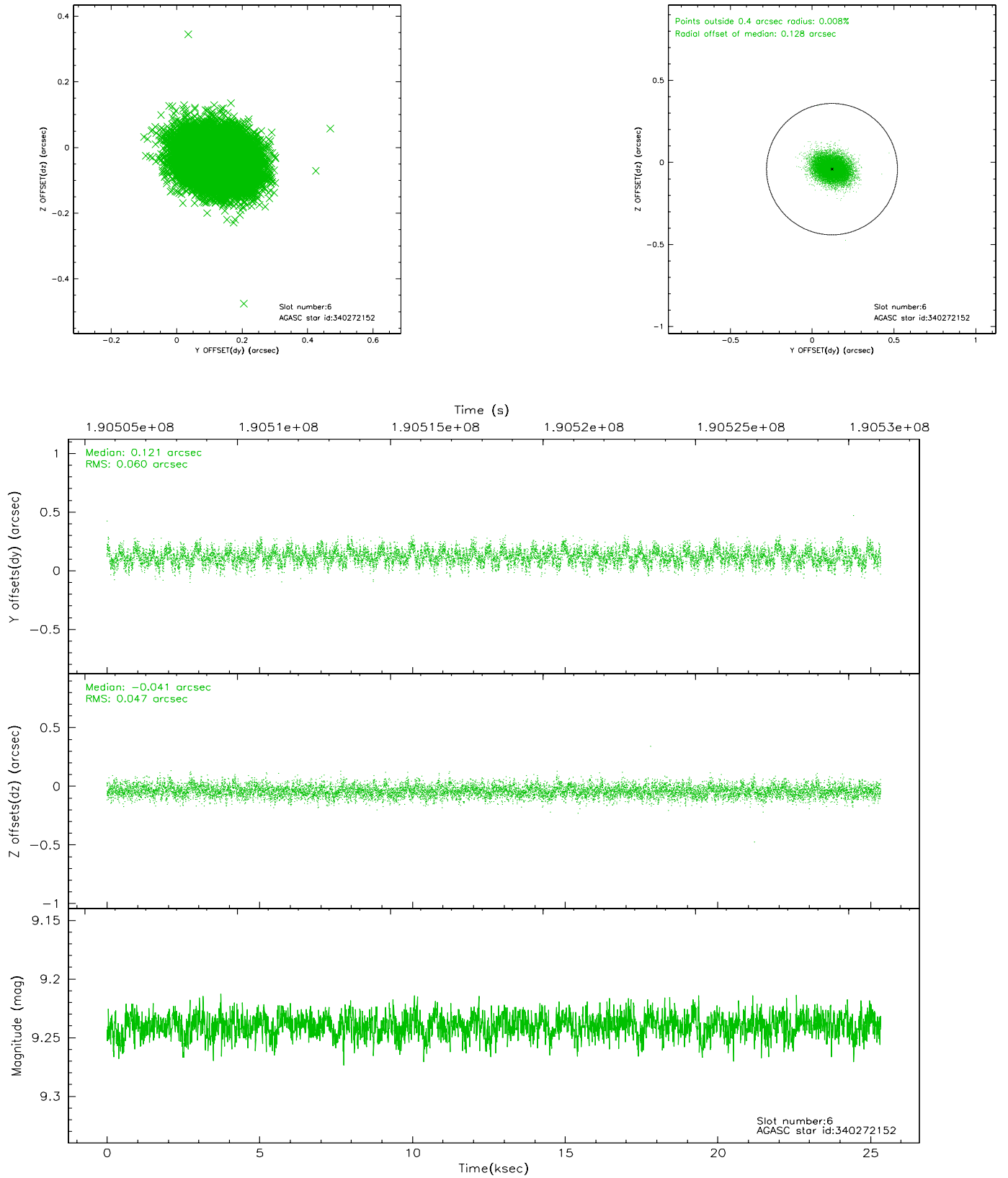
2.4.2 Slot 4



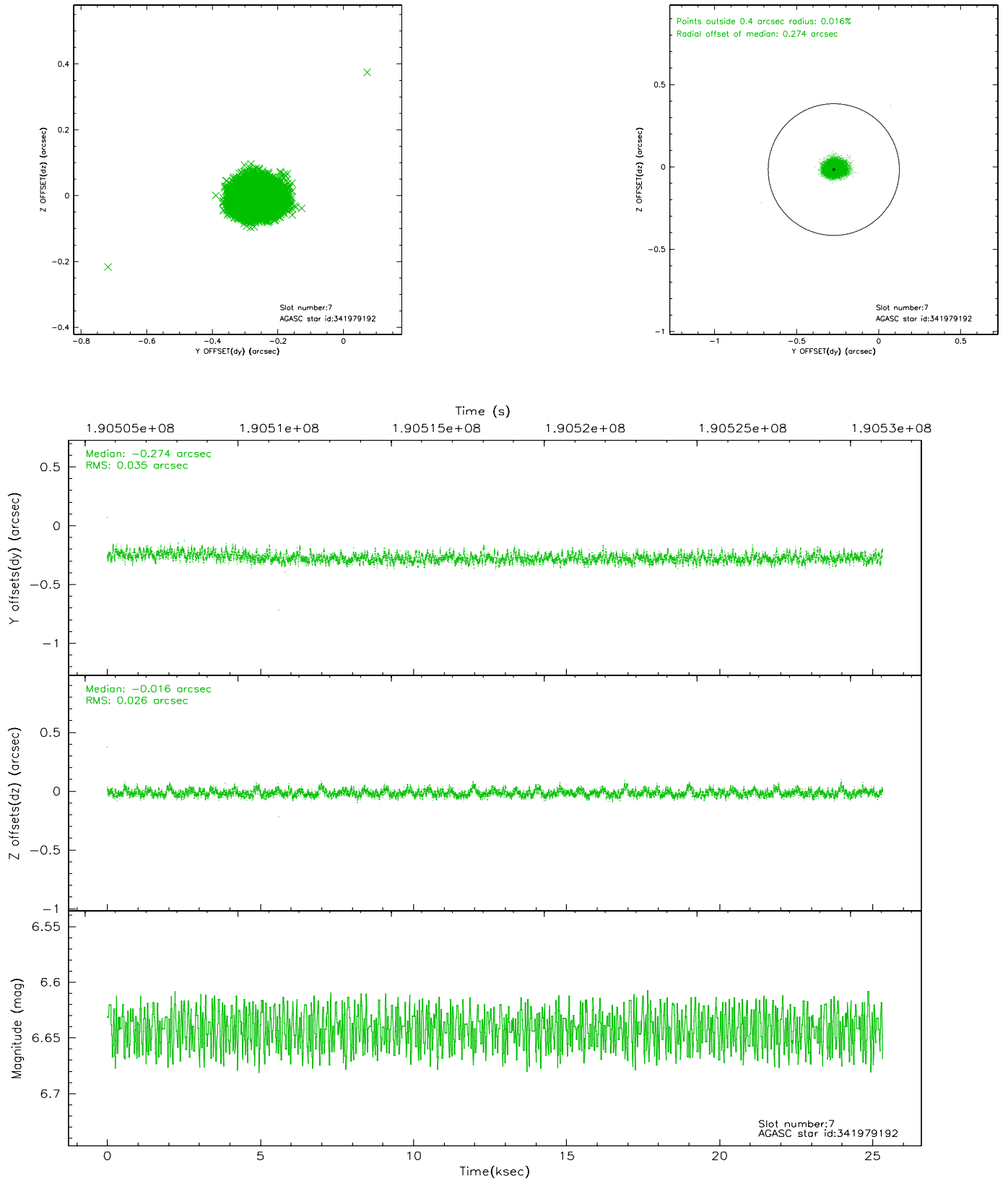
2.4.3 Slot 5



2.4.4 Slot 6

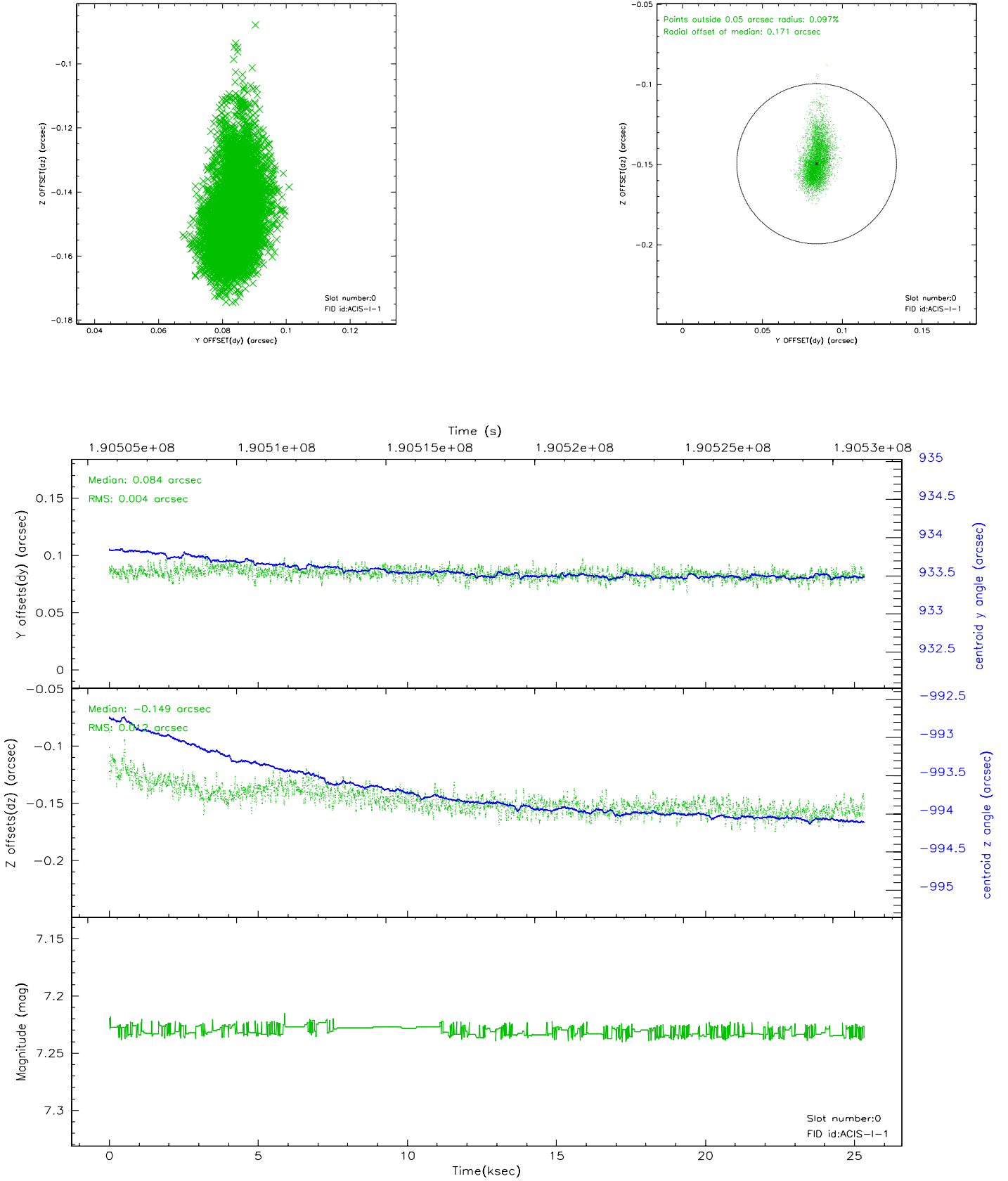


2.4.5 Slot 7

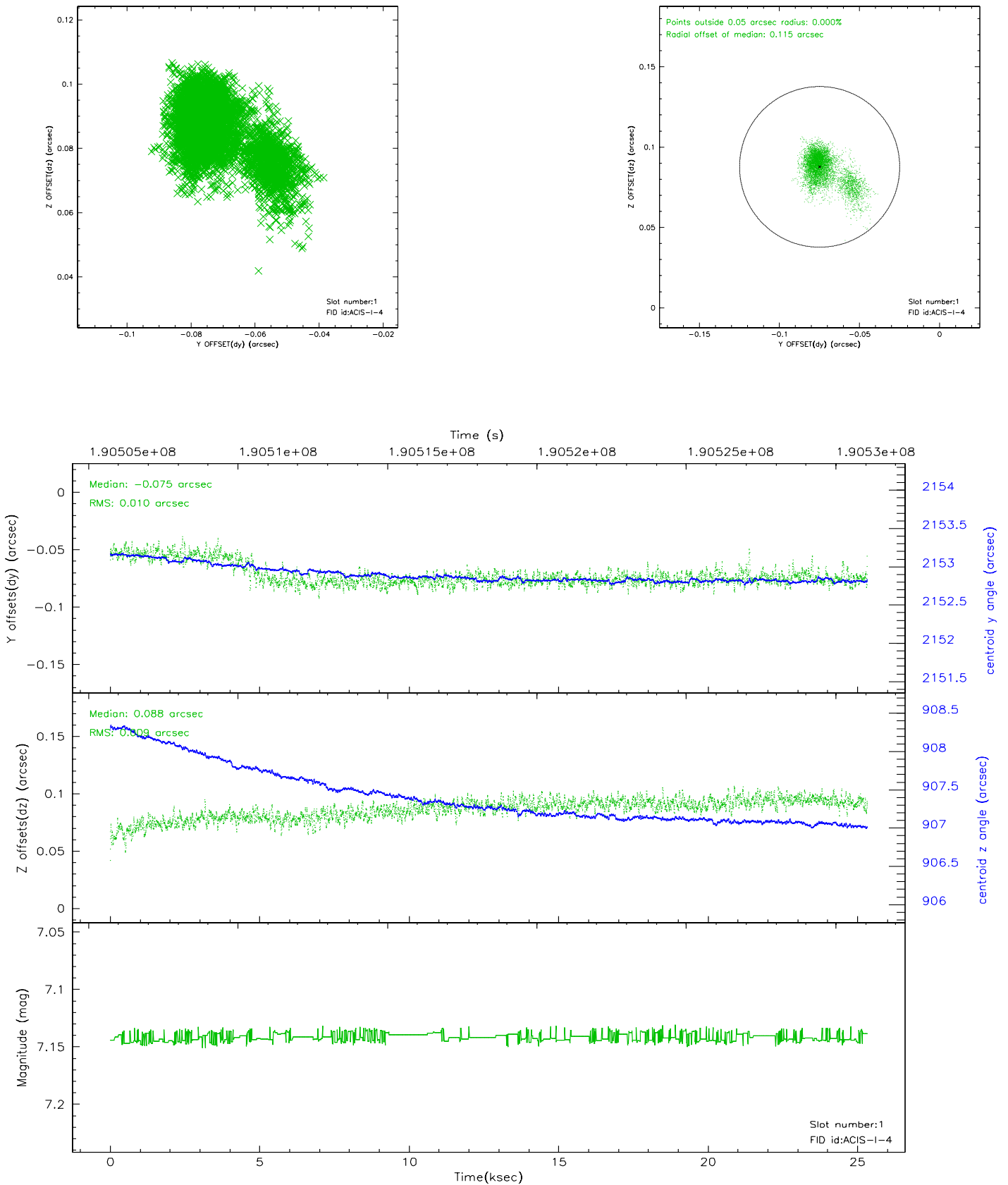


2.5 FID Slots

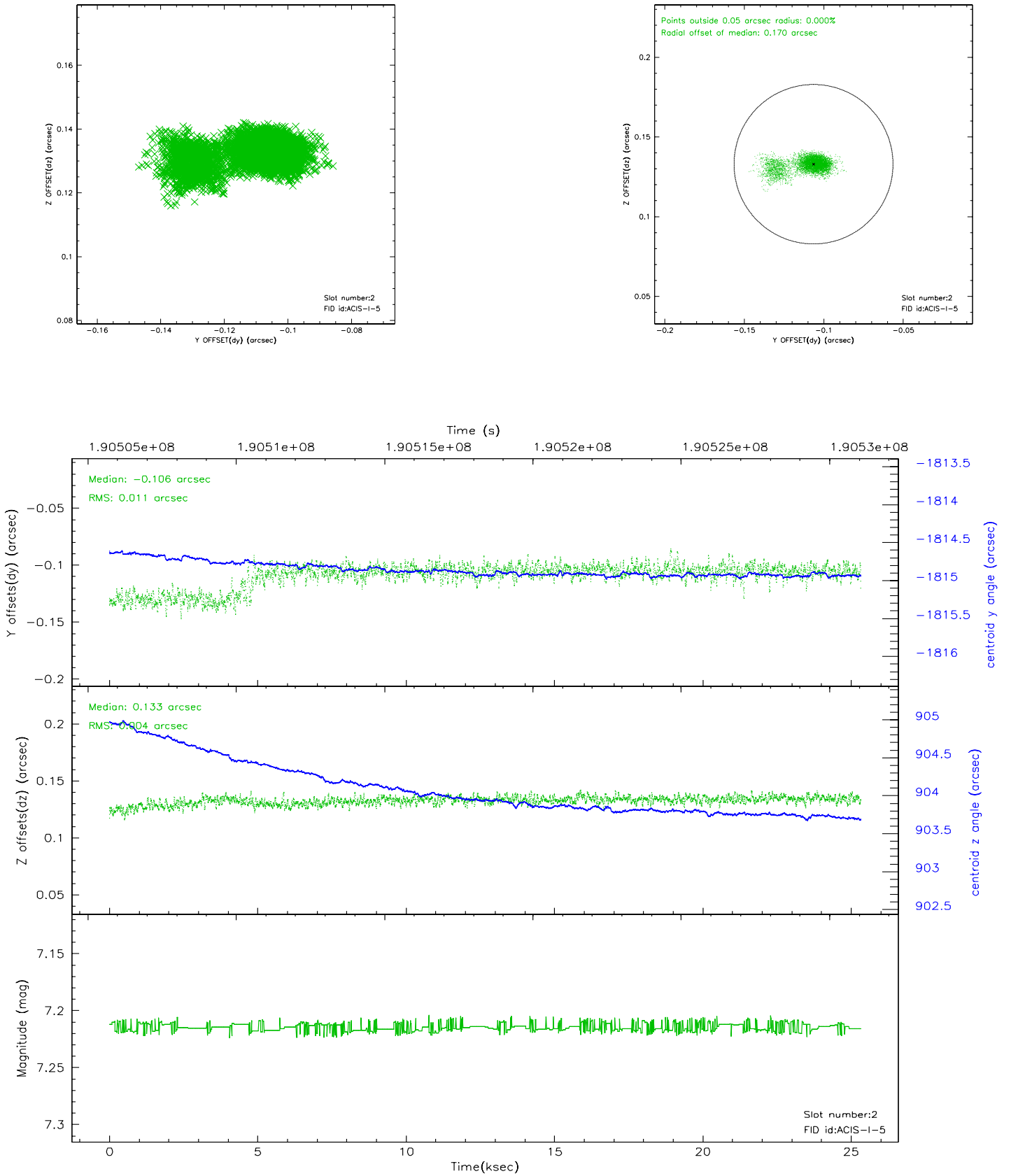
2.5.1 Slot 0



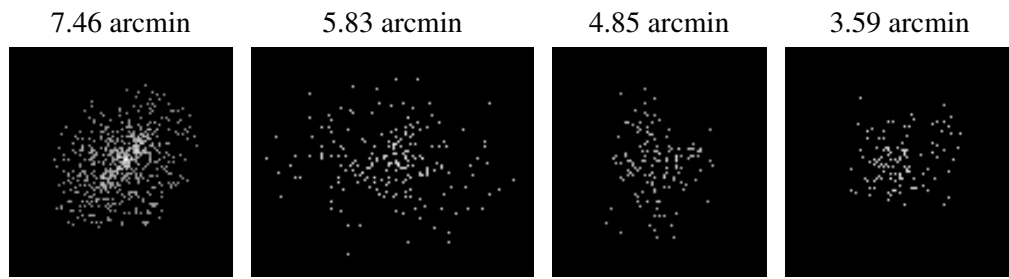
2.5.2 Slot 1



2.5.3 Slot 2



3 Point Sources



A Summary

A.1 Status

V&V Scientist	Jen Lauer
V&V Date (YYYY-MM-DD)	2006.06.07
V&V Edition	1
V&V Disposition and Status	OK
V&V Charge Time	24.641

A.2 Comments